



Conference on Regional Cooperation and Integration

Experiences in Asia and the Pacific

Organized by the Asian Development Bank and Kunming Municipal Government,
Yunnan Province, People's Republic of China

Papers and Presentations

Disclaimer:

The views expressed in this presentation are the views of the author and do not necessarily reflect the views or policies of the Asian Development Bank (ADB), or its Board of Directors or the governments they represent.

ADB makes no representation concerning and does not guarantee the source, originality, accuracy, completeness or reliability of any statement, information, data, finding, interpretation, advice, opinion, or view presented.

By making any designation of or reference to a particular territory or geographic area, or by using the term "country" in this document, ADB does not intend to make any judgments as to the legal or other status of any territory or area.



BIMP-EAGA
East ASEAN Growth Area



CAREC
Central Asian Regional Economic Cooperation



IMT-gt
Indonesia - Malaysia - Thailand
Growth Triangle



SASEC
South Asian Sub-Economic Cooperation







The Greater Mekong Subregion Economic Cooperation Program

By Dr. Poramettee Vimolsiri
Deputy Secretary General, National Economic & Social Development Board
Government of Thailand

Conference on Regional Cooperation and Integration
-Experiences in Asia and the Pacific
 Kunming, Yunnan Province, People's Republic of China
 26-27 March 2012



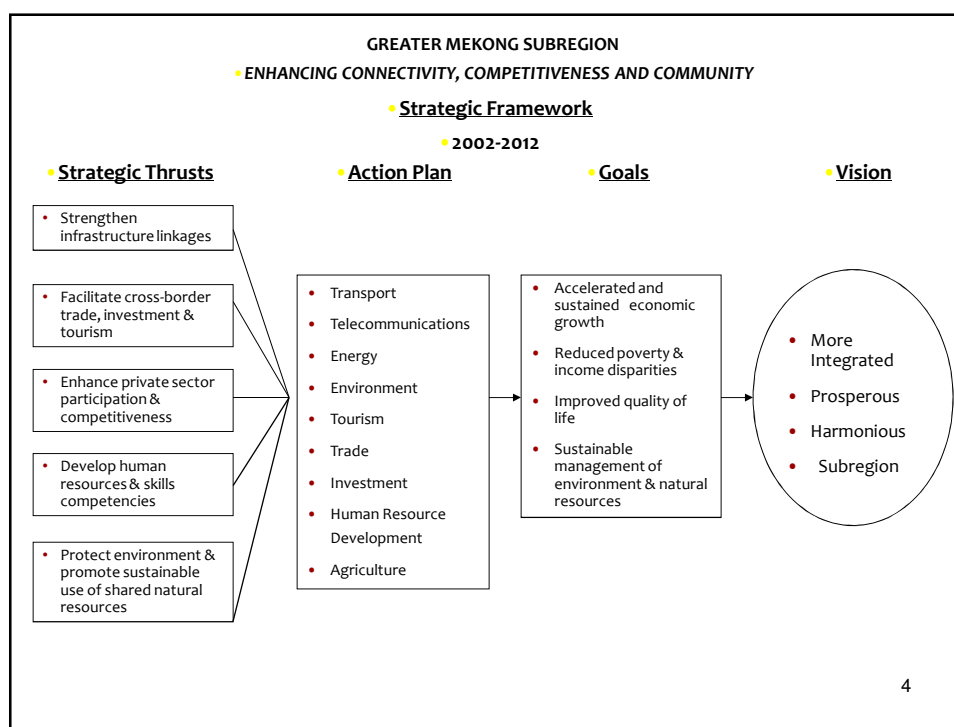
Outline of Presentation

1. Overview of GMS Program
2. Success Factors and Lessons Learned
3. Challenges and Way Forward
4. Building Strategic Alliances and Partnerships

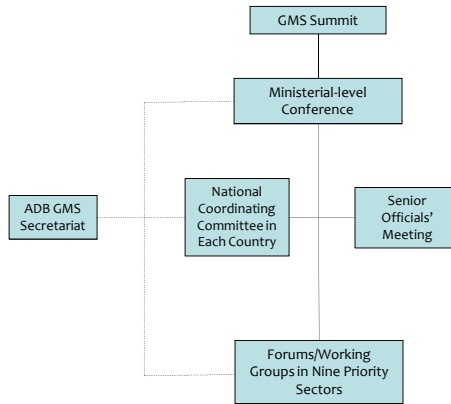
GMS Program: An Overview



- **Participating Countries:**
Cambodia, People's Republic of China, Lao PDR, Myanmar, Thailand, and Viet Nam
- **Strategic Priorities:**
 - Vision – a more integrated, prosperous, and harmonious subregion
 - “3Cs” – Connectivity, Competitiveness, Community
- **GMS projects** – totaled \$15 billion as of December 2011

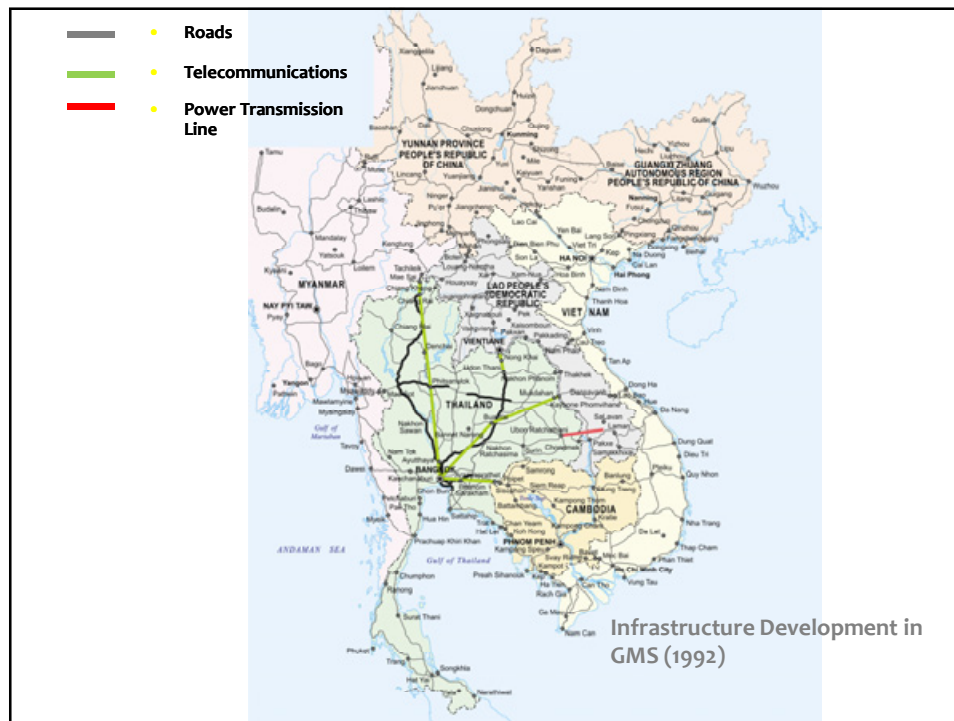


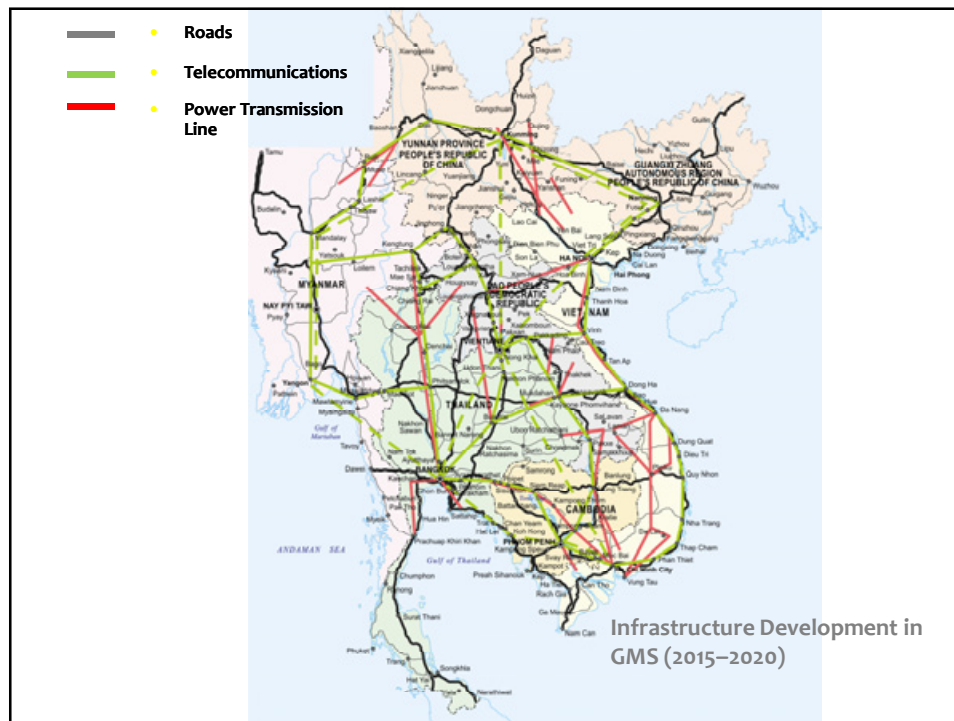
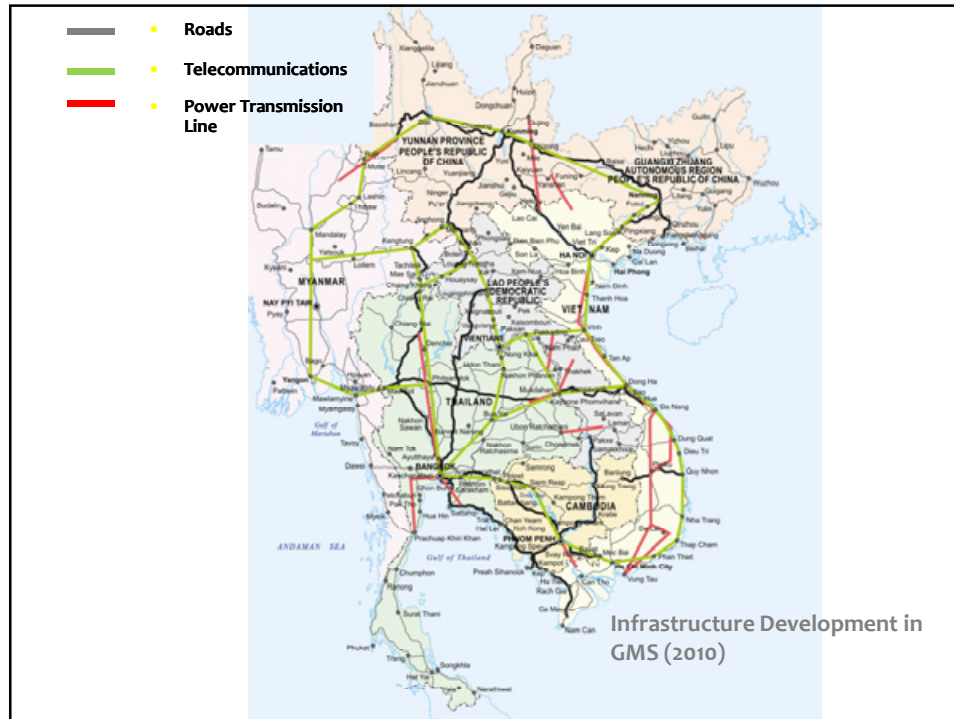
GMS Institutional Structure



Priority Areas of Cooperation:

1. Transport
2. Energy
3. Telecommunications
4. Environment
5. Agriculture
6. Tourism
7. Human resource development
8. Trade and transport facilitation
9. Investment





Significant Achievements

- Improved physical connectivity
- Power grid interconnection, major hydropower projects
- Optical fiber interconnection, information superhighway network
- Some progress in CBTA implementation; bilateral agreements on exchange of traffic rights
- Work on cross-border trade in food and agri products, climate change adaptation
- Increased international tourist arrivals, tourism revenues, MTCO
- GMS Business Forum, MOU on FRETA
- Phnom Penh Plan for Development Management
- Initiatives to address negative externalities (communicable disease control, HIV/AIDS prevention, safe migration)
- Sustainable development efforts to protect fragile ecosystems

Success Factors

- Collective political will and commitment most crucial
- Country ownership vital
- Clearly defined and functioning institutional machinery very important
- Partnerships indispensable

Major Challenges

- Continued development of GMS regional corridors; closely monitoring of progress in economic corridor development
- Exploiting emerging opportunities in a resurgent and dynamic Asia, e.g. linking with PRC and India/South Asia, complementarities with ASEAN
- Effectively addressing soft issues: global warming & climate change, potential negative effects of connectivity
- Increased mobilization of private investments for the GMS program, including public-private partnerships

Way Forward: New GMS Strategic Framework 2012-2022 – General Features


- Builds on success/progress of GMS Program
- Maintains current vision and goals
- Continues with overall principles and action-oriented approach to cooperation:
 - ✓ country ownership
 - ✓ equal consultation
 - ✓ mutual benefit
 - ✓ steady progress
 - ✓ results-orientation
 - ✓ recognition of varying levels of development
- Anchored on corridor-development approach

Way Forward: New GMS Strategic Framework 2012-2022 – New Directions

- More focus on software aspects
- Greater selectivity and prioritization within sectors
- Closer link to broader regional integration agenda
- Strengthen cross-sectoral linkages
- Rebalance focus and resources
- Strengthen monitoring of Program results and impact

Way Forward: New GMS Strategic Framework 2012-2022 – Building Strategic Alliances & Partnerships

- ASEAN, ASEAN + 3
- Mekong River Commission
- ACMECS
- CAREC
- BIMSTEC
- IMT-GT
- SEAMEO



**Thank you for your
kind attention!**