



Conference on Regional Cooperation and Integration

Experiences in Asia and the Pacific

Organized by the Asian Development Bank and Kunming Municipal Government,
Yunnan Province, People's Republic of China

Papers and Presentations

Disclaimer:

The views expressed in this presentation are the views of the author and do not necessarily reflect the views or policies of the Asian Development Bank (ADB), or its Board of Directors or the governments they represent.

ADB makes no representation concerning and does not guarantee the source, originality, accuracy, completeness or reliability of any statement, information, data, finding, interpretation, advice, opinion, or view presented.

By making any designation of or reference to a particular territory or geographic area, or by using the term "country" in this document, ADB does not intend to make any judgments as to the legal or other status of any territory or area.



BIMP-EAGA
East ASEAN Growth Area



CAREC
Central Asia Regional Economic Cooperation



IMT-gt
Indonesia - Malaysia - Thailand
Growth Triangle



SASEC
South Asian Sub-Economic Community





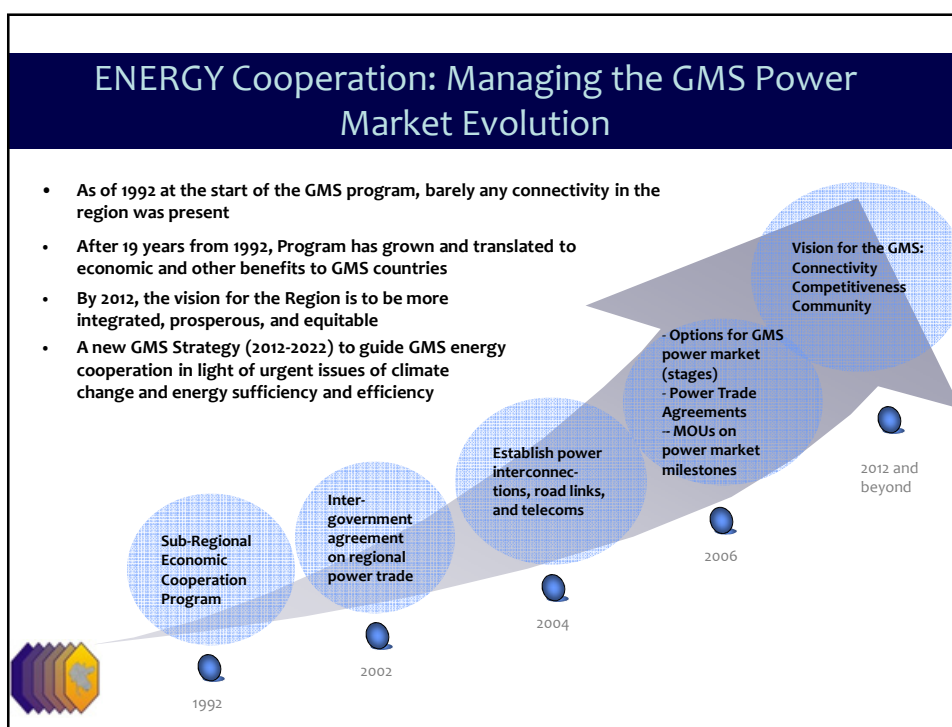


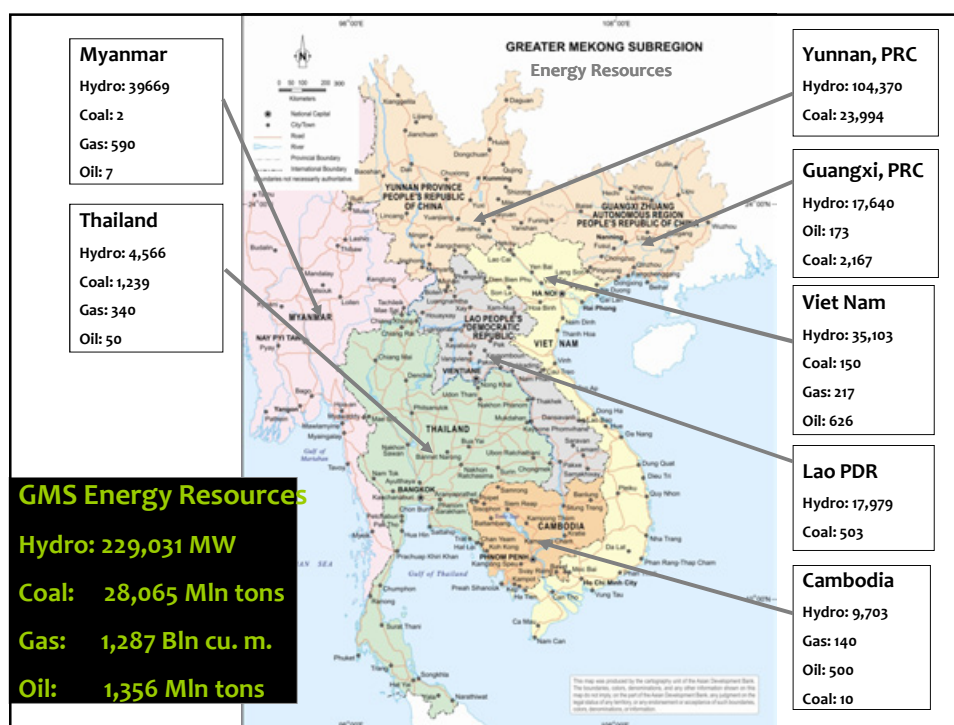
Harnessing Energy Development Opportunities in the GMS Program

By: Mr. Khin Maung Win

Conference on Regional Cooperation and Integration
-Experiences in Asia and the Pacific
 Kunming, Yunnan Province, People's Republic of China
 26-27 March 2012







Providing the Policy and Institutional Framework

Policy Statement on Regional Power Trade (adopted 2000)

Inter-Governmental Agreement on Regional Power Trade (IGA) (signed 2002)

Work earlier undertaken through:

- Electric Power Forum (EPF)
- Experts Group on Power Interconnection and Trade (EGP)

Currently through:

- Regional Power Trade Coordination Committee (RPTCC) and its Working Groups

In the Future through:

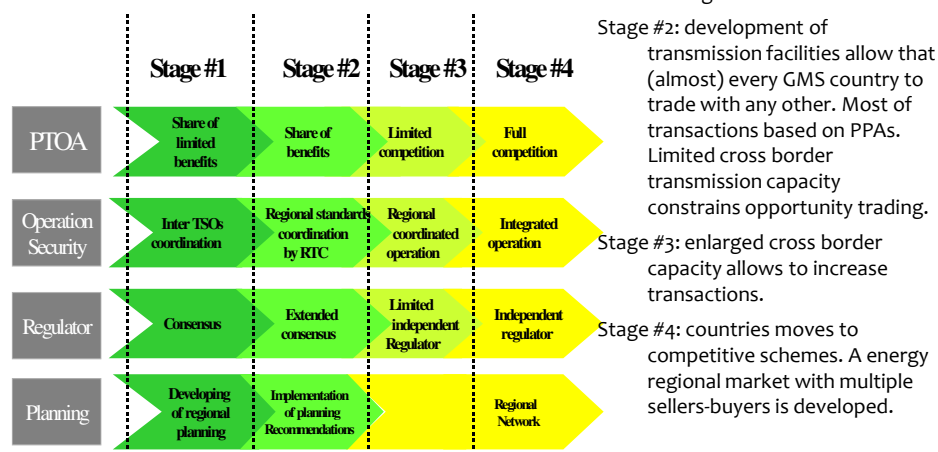
- Regional Power Coordination Center (RPCC) to be set up



- ADB Study for a Regional PTOA in the GMS

- Two MOUs for Moving to Stages 1 and 2

Implementation Plan (four stages):



Developing the Grid Interconnection Infrastructure

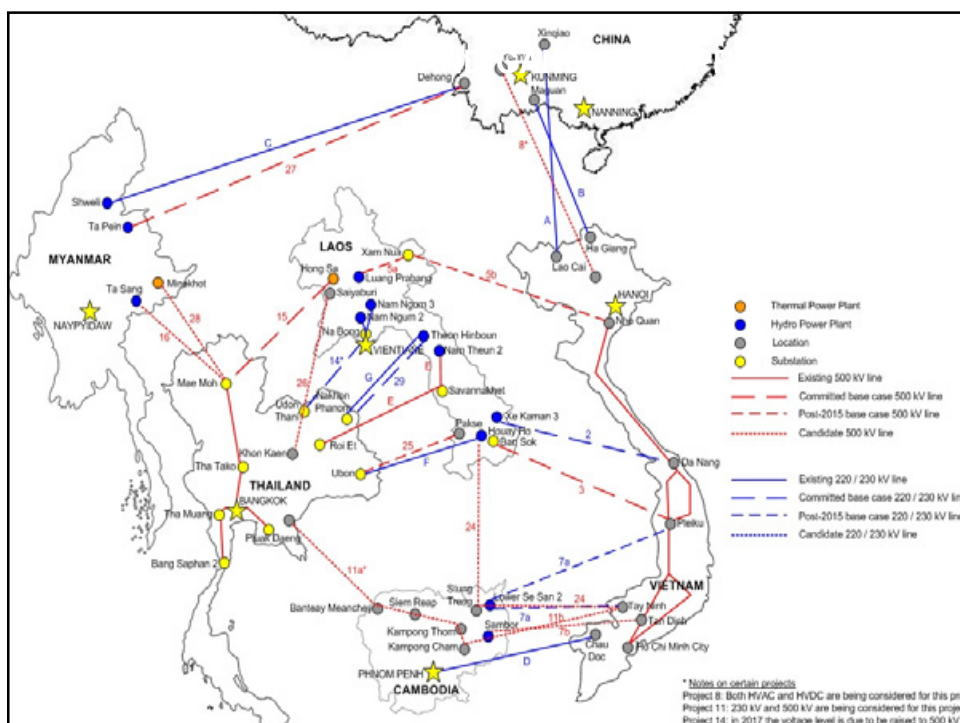
Focus on:

- Essential physical power interconnections until 2020
- Harmonization of transmission planning, design and operational practices

Regional Indicative Master Plan on Power Interconnection
endorsed by EGP in May 2002

Master Plan Update (2010-2025) presented to RPTCC in Oct 2010

- Identification of potential regional projects
- Identified 3 “poles” of subregional markets



GMS Energy Challenges: Impacts Social and Environmental Sustainability

- Despite impressive economic growth, poverty is high, many are still energy poor
 - GDP grew 7% yearly (1992-2005); power consumed grew 9% yearly (2001-2005)
 - 74 million (20% of population) still without power access; per capita power use just 2/3 of average for LDCs
- Energy vulnerability rising- high dependence on oil imports
 - Lower emissions by integrating energy sector
- High economic growth puts stress on resources
- Climate Change: energy efficiency, renewable energy and low carbon sources

ADB's Role under Expanded GMS Energy Cooperation

- Catalyst for **dialogue and as honest broker**
- Supporter of **energy policy reform**
- Promoter of **capacity building**
- Serve as **information clearinghouse**

Future Emphasis (under GMS Energy Road Map):

- Developing the regional power market
- Developing abundant energy resources with desired environmental properties (e.g., renewable energy)
- Rationalizing the use of energy in the GMS (e.g., energy efficiency)