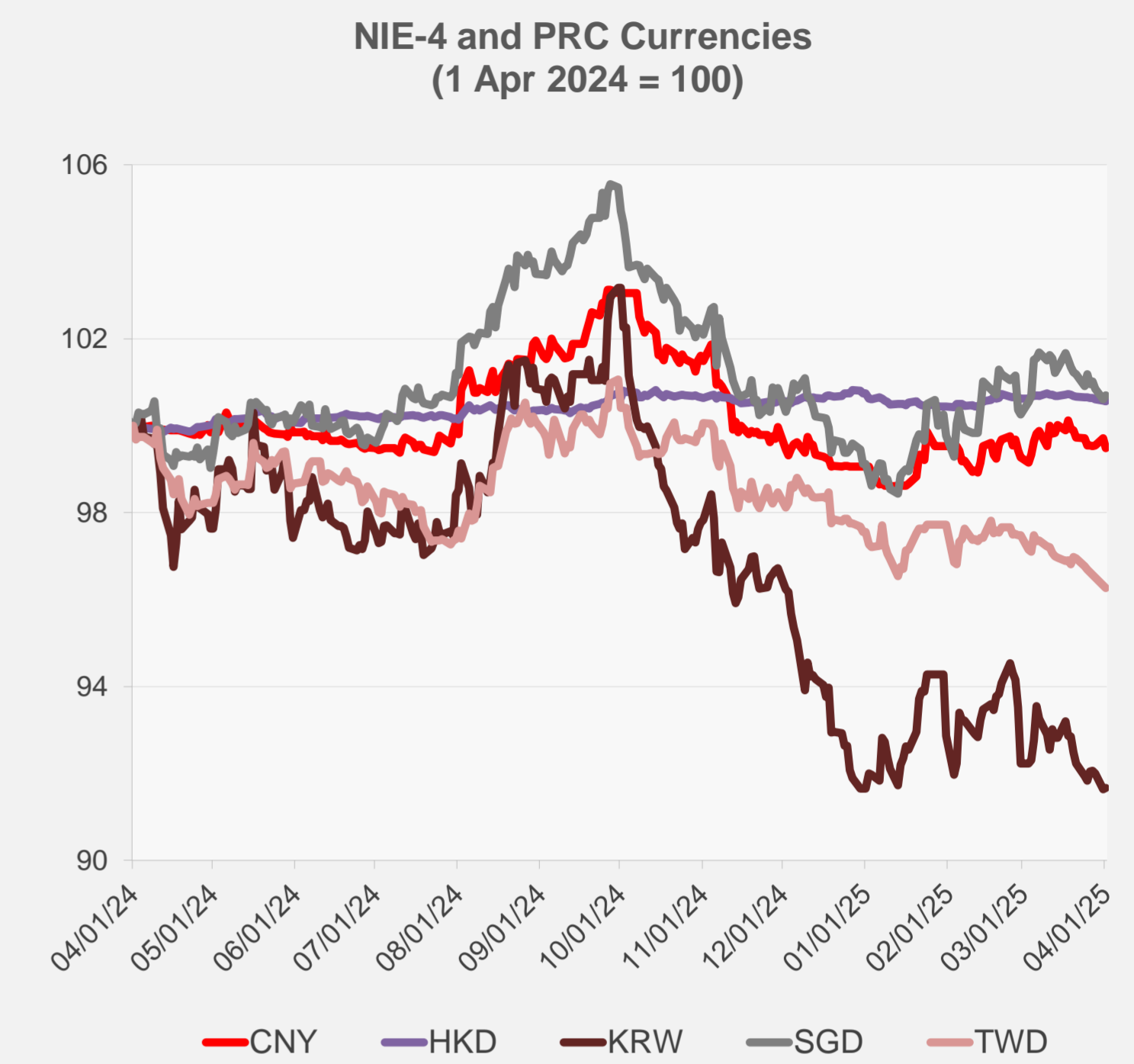
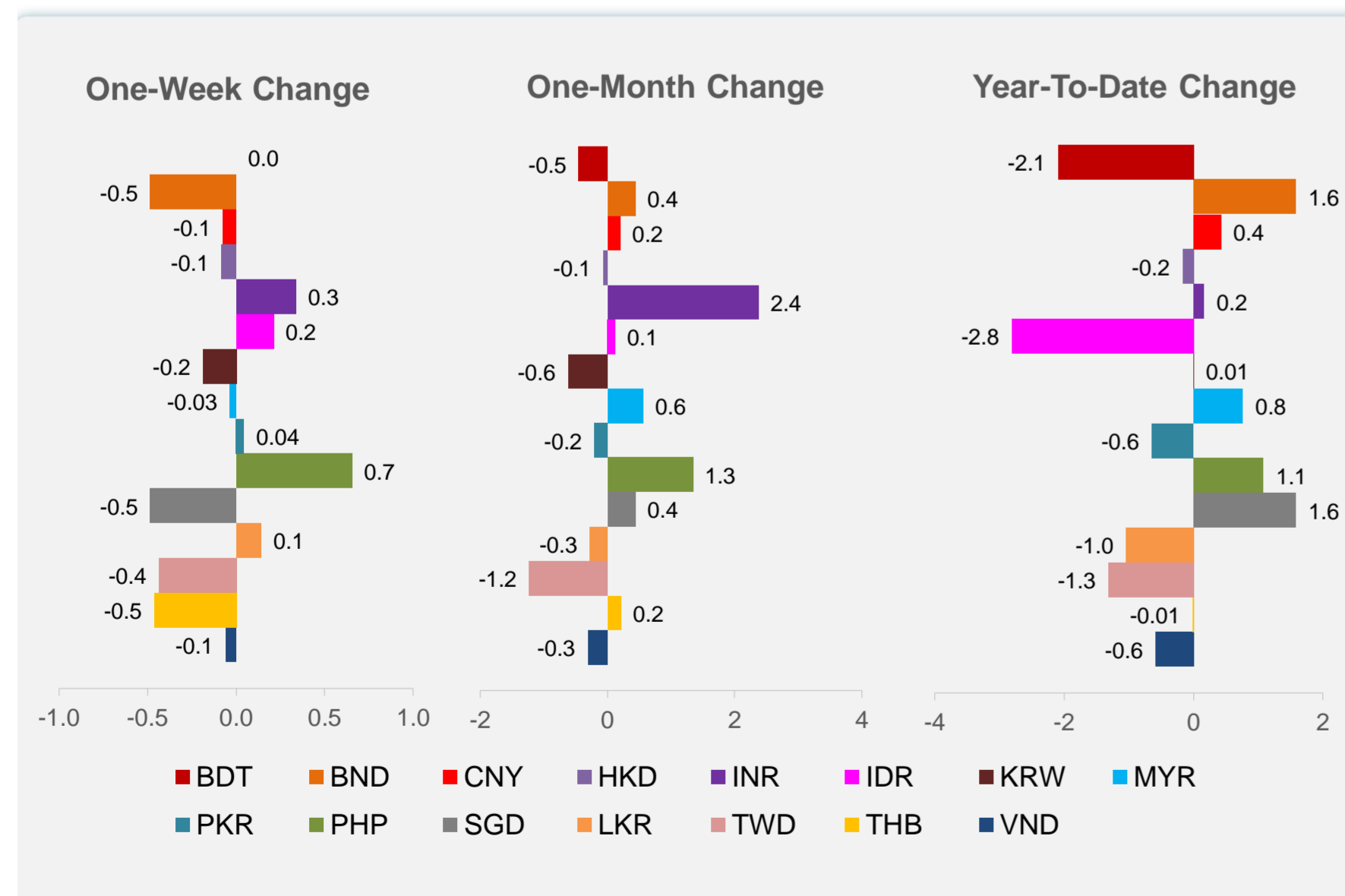
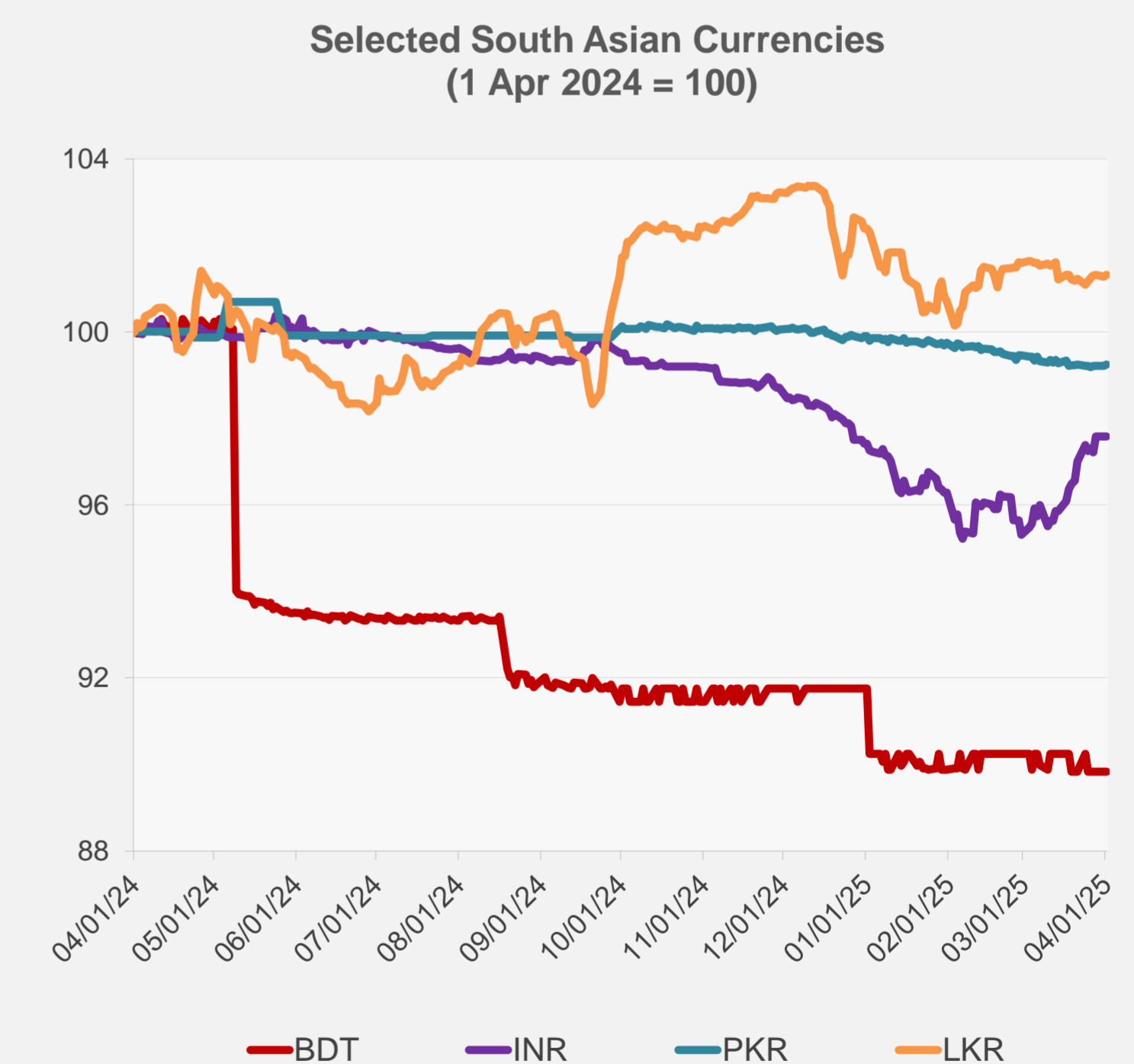
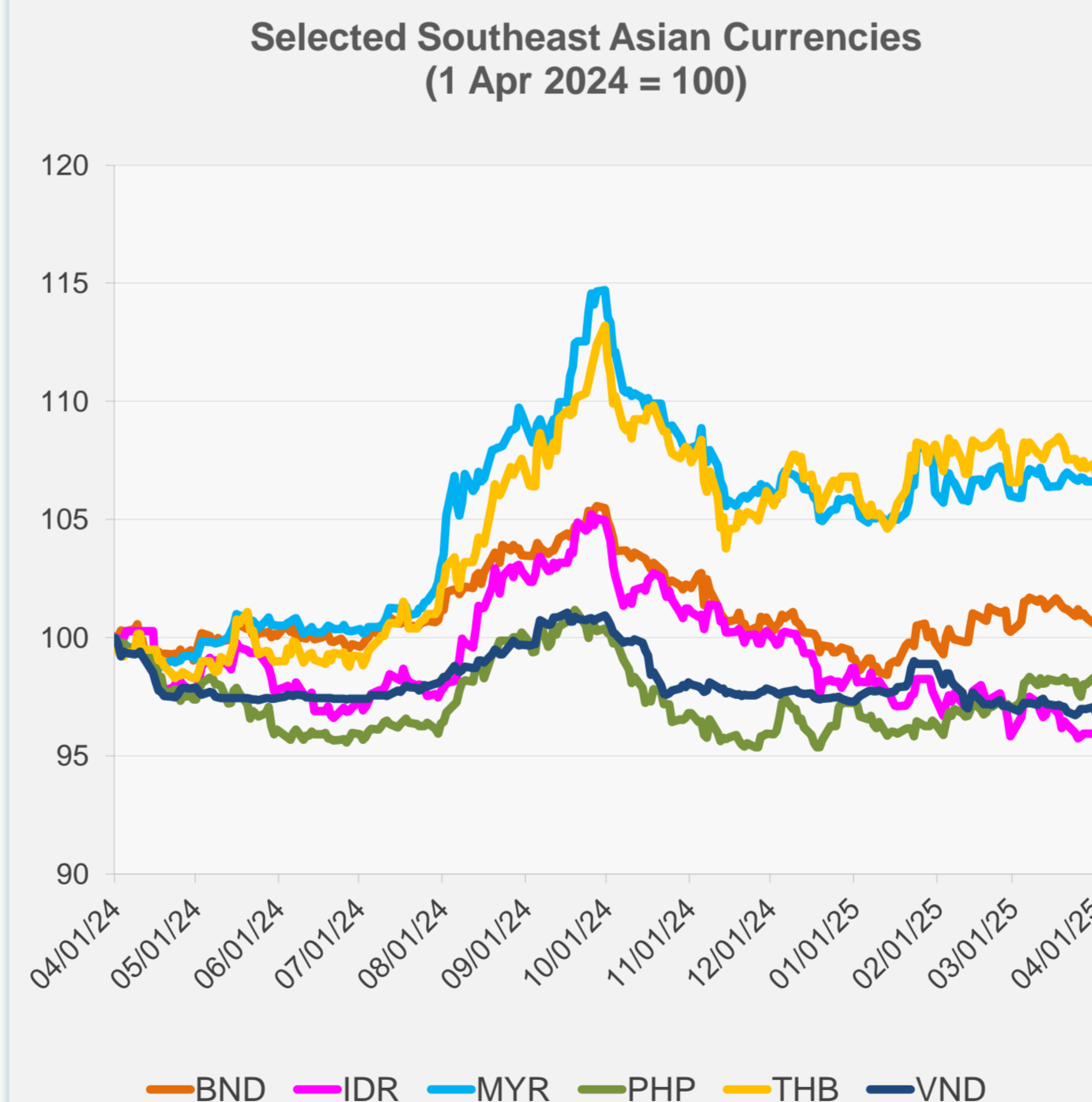


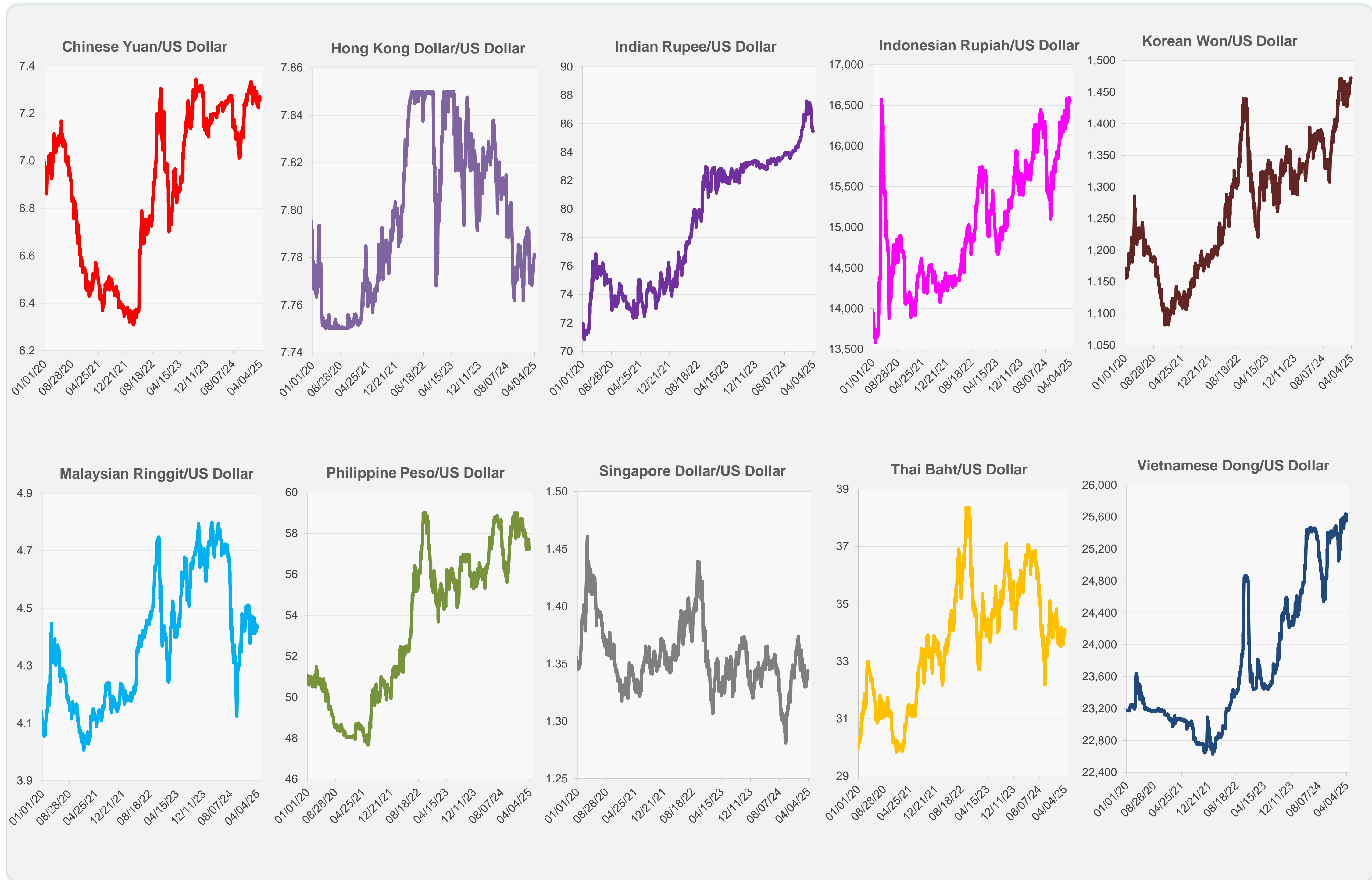
| | Latest Closing | % change from Previous Day | % change from 01-Jan-25 |
|------------------------------|----------------|----------------------------|-------------------------|
| Euro | 0.93 | 0.08 | 4.40 |
| Japanese yen (JPY) | 149.27 | 0.18 | 5.29 |
| Bangladeshi taka (BDT) | 122.05 | 0.00 | -2.09 |
| Brunei dollar (BND) | 1.34 | 0.09 | 1.59 |
| Chinese yuan (CNY) | 7.27 | -0.23 | 0.42 |
| Hong Kong dollar (HKD) | 7.78 | -0.01 | -0.17 |
| Indian rupee (INR) | 85.47 | 0.00 | 0.17 |
| Indonesian rupiah (IDR) | 16,560.00 | 0.00 | -2.81 |
| Korean won (KRW) | 1,472.05 | 0.03 | 0.01 |
| Malaysian ringgit (MYR) | 4.44 | 0.00 | 0.77 |
| Pakistan rupee (PKR) | 280.18 | 0.04 | -0.64 |
| Philippine peso (PHP) | 57.23 | 0.00 | 1.08 |
| Singapore dollar (SGD) | 1.34 | 0.09 | 1.59 |
| Sri Lanka rupee (LKR) | 296.08 | 0.04 | -1.04 |
| Taipei,China NT dollar (TWD) | 33.22 | -0.06 | -1.32 |
| Thai baht (THB) | 34.10 | -0.51 | -0.01 |
| Vietnamese dong (VND) | 25,635.00 | -0.34 | -0.59 |



NIE = Newly Industrialized Economies



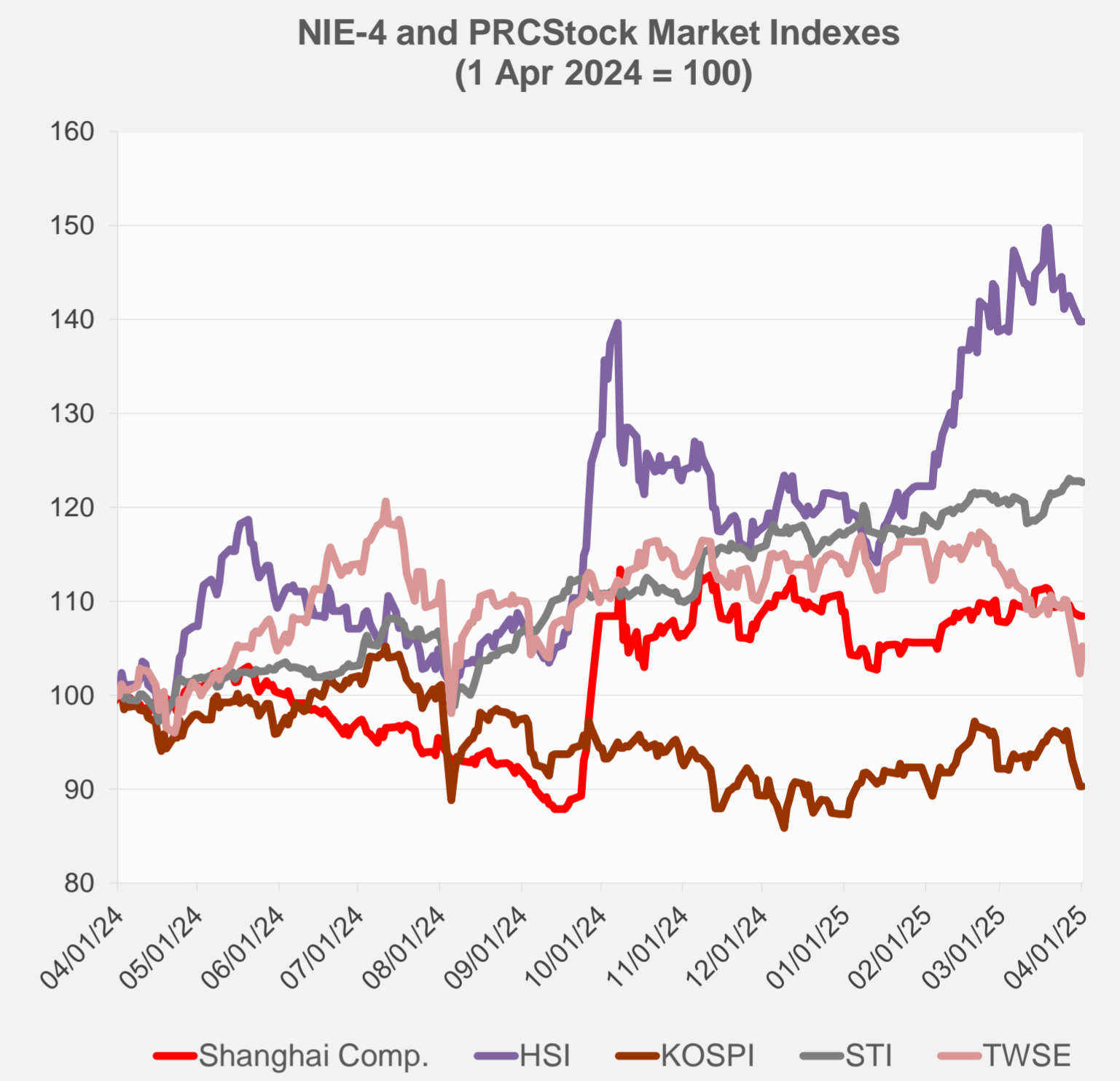
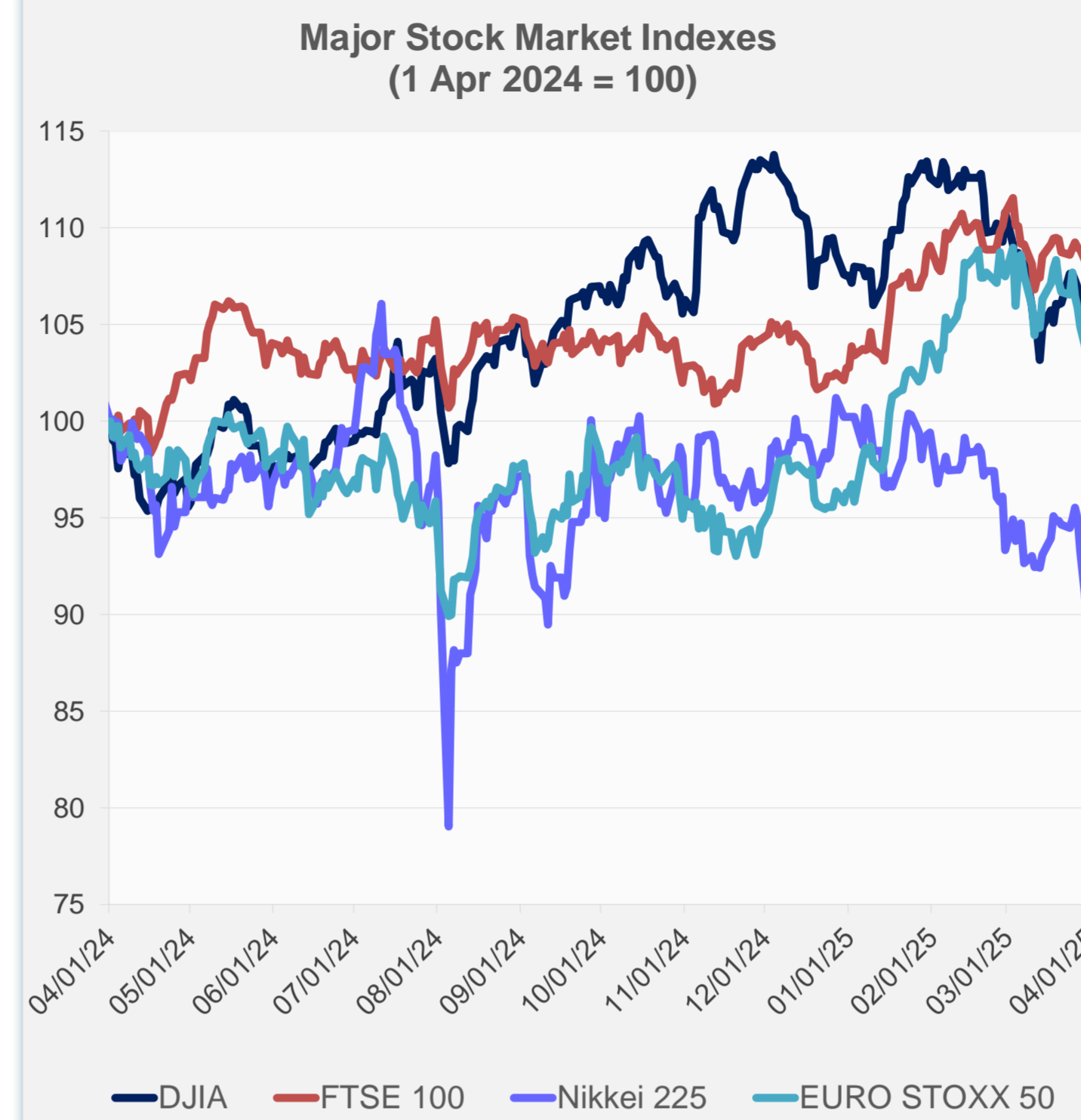
Note: Negative/Decreasing values indicate depreciation of local currency, and positive/increasing values indicate appreciation.
Source: ADB calculations using data from Haver Analytics.



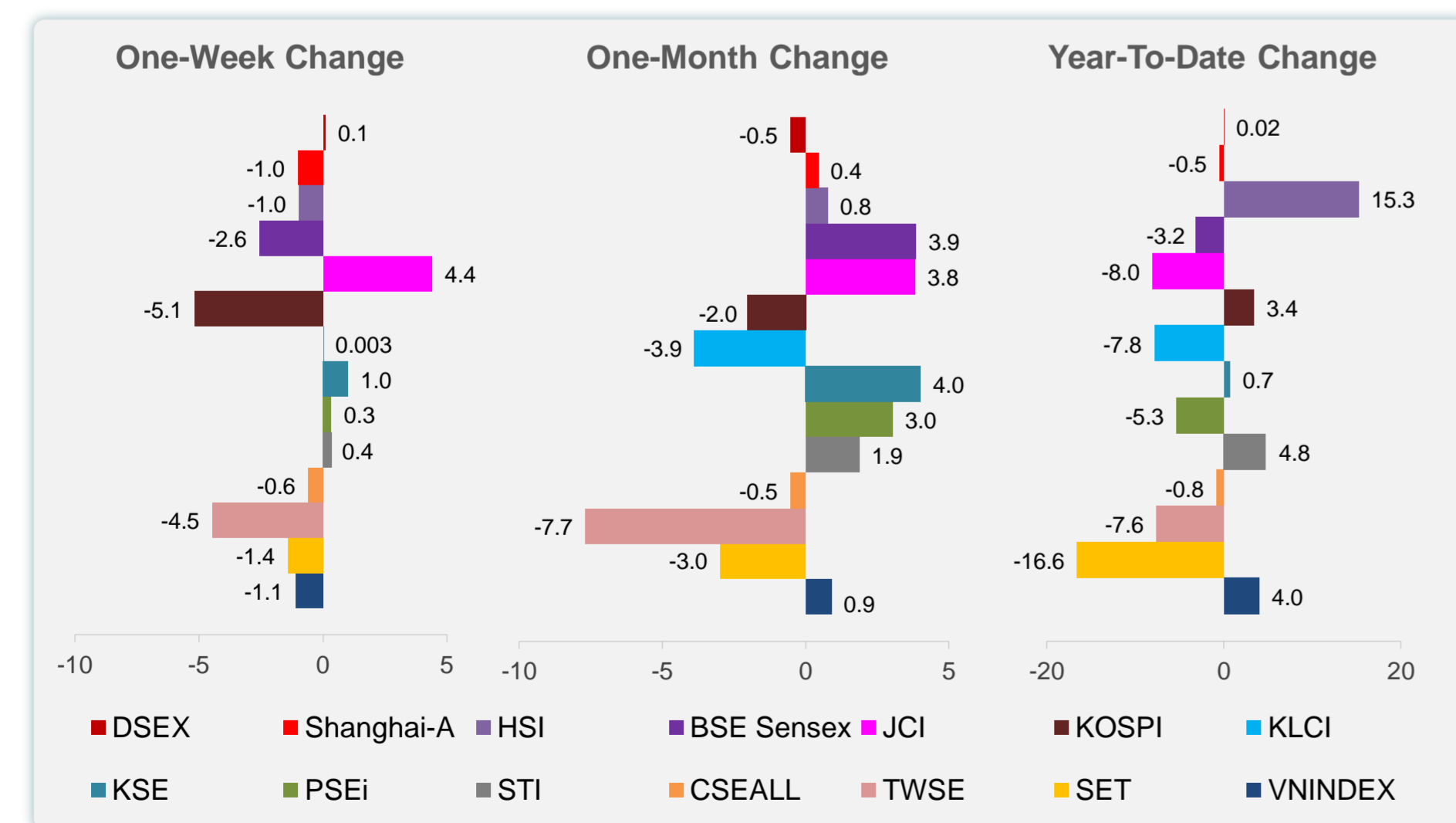
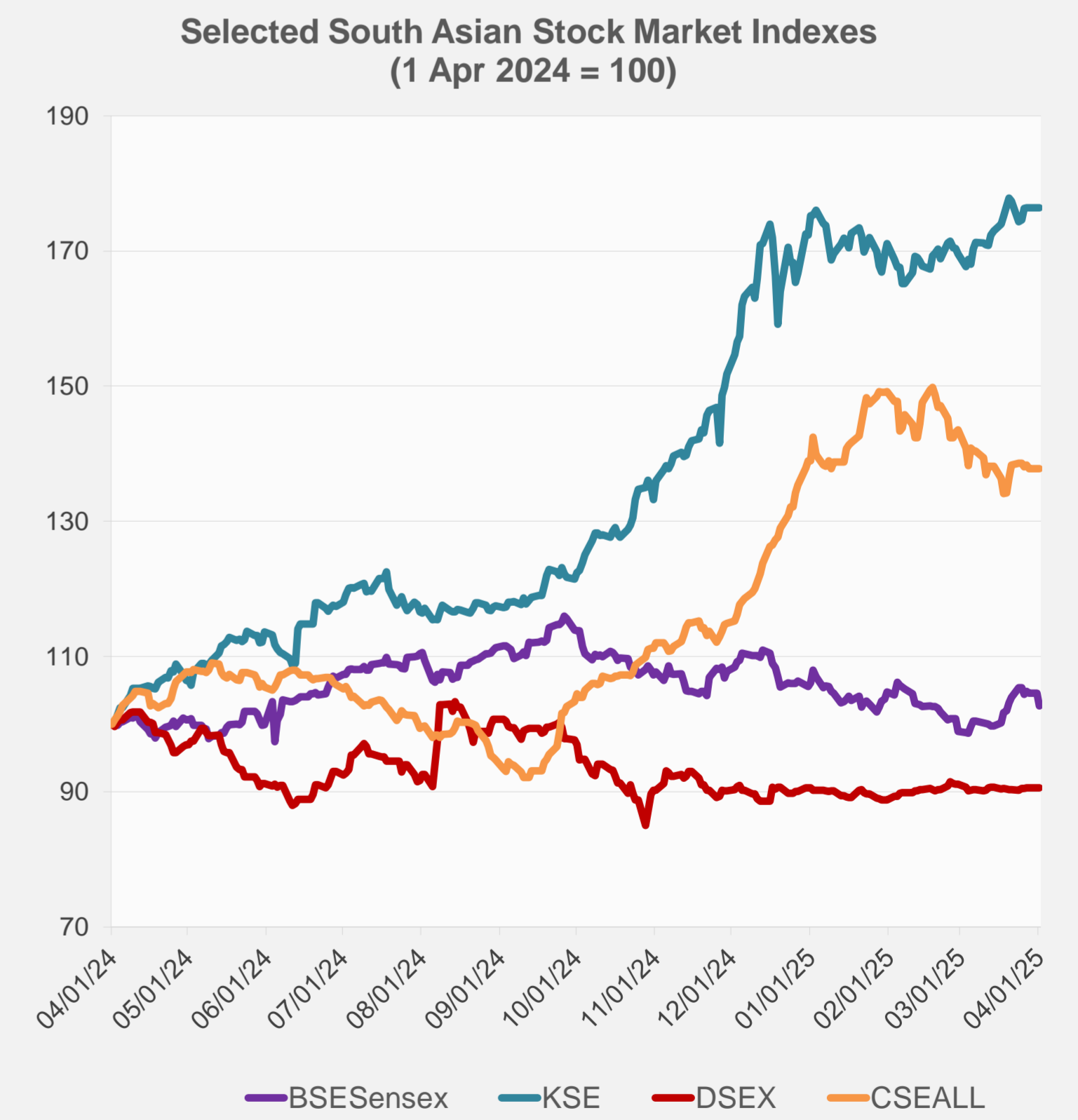
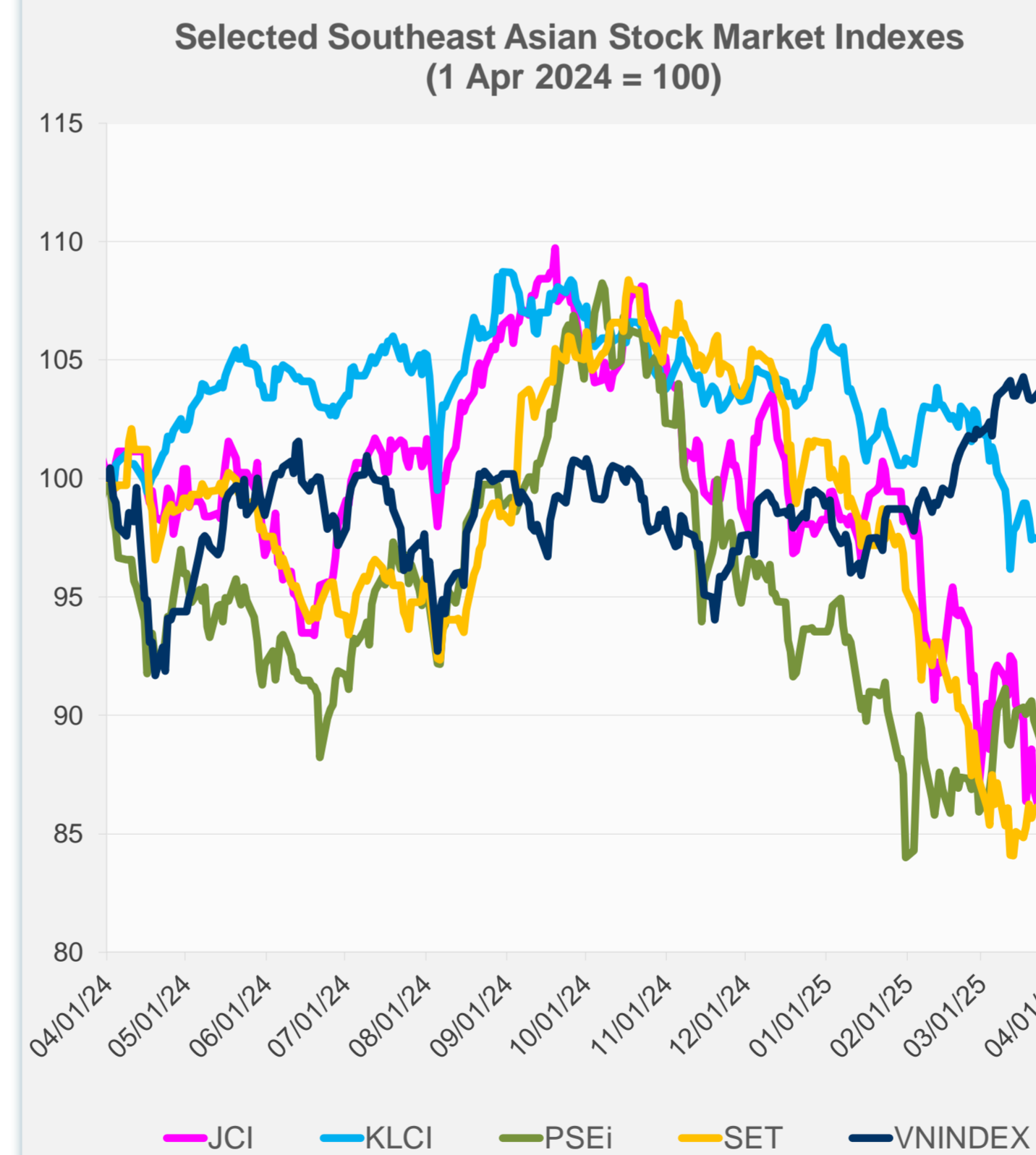
Source: Haver Analytics.

Daily Market Watch
STOCK INDEXES

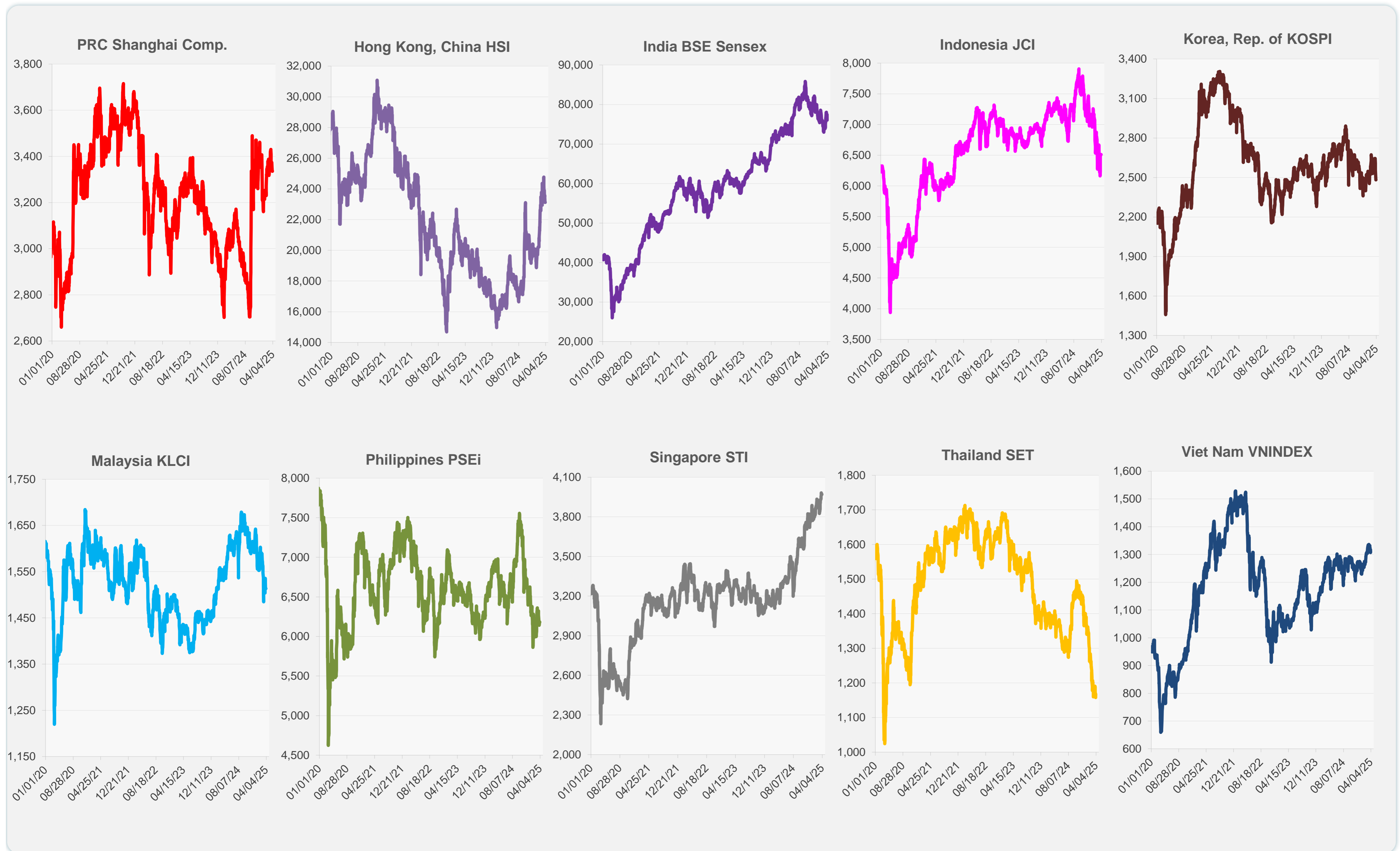
| | Latest Closing | % change from Previous Day | % change from 01-Jan-25 |
|----------------------|----------------|----------------------------|-------------------------|
| US Dow Jones Ind Avg | 41,989.96 | -0.03 | -1.30 |
| US NASDAQ | 17,449.89 | 0.87 | -9.64 |
| US S&P 500 | 5,633.07 | 0.38 | -4.23 |
| UK FTSE 100 | 8,634.80 | 0.61 | 5.65 |
| EURO STOXX 50 | 5,320.30 | 1.37 | 8.67 |
| Japan NIKKEI 225 | 35,624.48 | 0.02 | -10.70 |
| Bangladesh DSEX | 5,219.16 | 0.00 | 0.02 |
| PRC Shanghai Comp. | 3,335.75 | 0.00 | -0.48 |
| Hong Kong, China HSI | 23,119.58 | 0.00 | 15.25 |
| India BSE Sensex | 76,024.51 | -1.80 | -3.16 |
| Indonesia JCI | 6,510.62 | 0.00 | -8.04 |
| Korea, Rep. of KOSPI | 2,481.12 | 0.00 | 3.40 |
| Malaysia KLCI | 1,513.65 | 0.00 | -7.84 |
| Pakistan KSE 100 | 117,806.74 | 0.00 | 0.68 |
| Philippines PSEi | 6,180.72 | 0.00 | -5.33 |
| Singapore STI | 3,968.85 | -0.09 | 4.79 |
| Sri Lanka CSEALL | 15,814.82 | 0.00 | -0.81 |
| Taipei,China TWSE | 21,280.17 | 2.82 | -7.62 |
| Thailand SET | 1,168.02 | 0.86 | -16.58 |
| Viet Nam VNINDEX | 1,317.33 | 0.80 | 3.99 |



NIE = Newly Industrialized Economies



Sources: ADB calculations using data from CEIC Data Company and Haver Analytics.



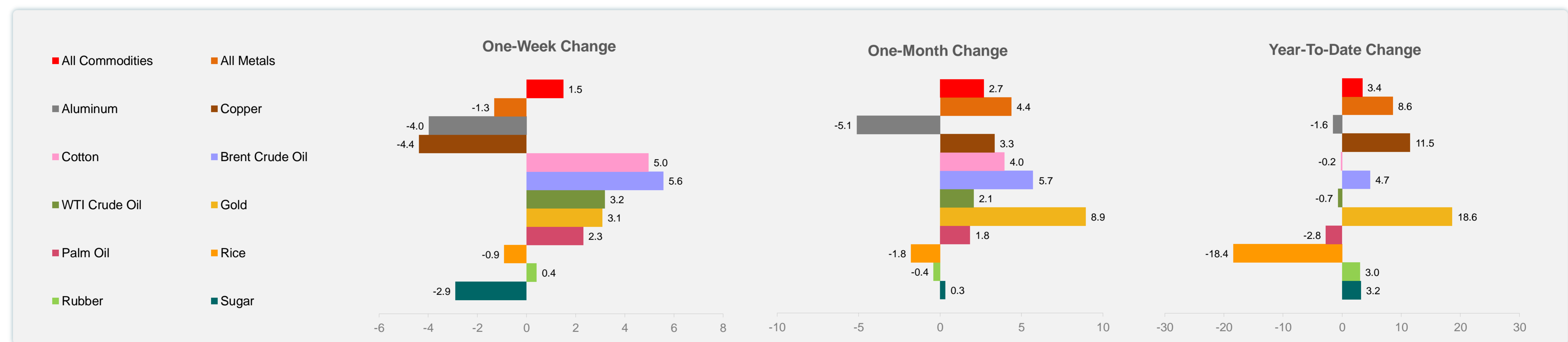
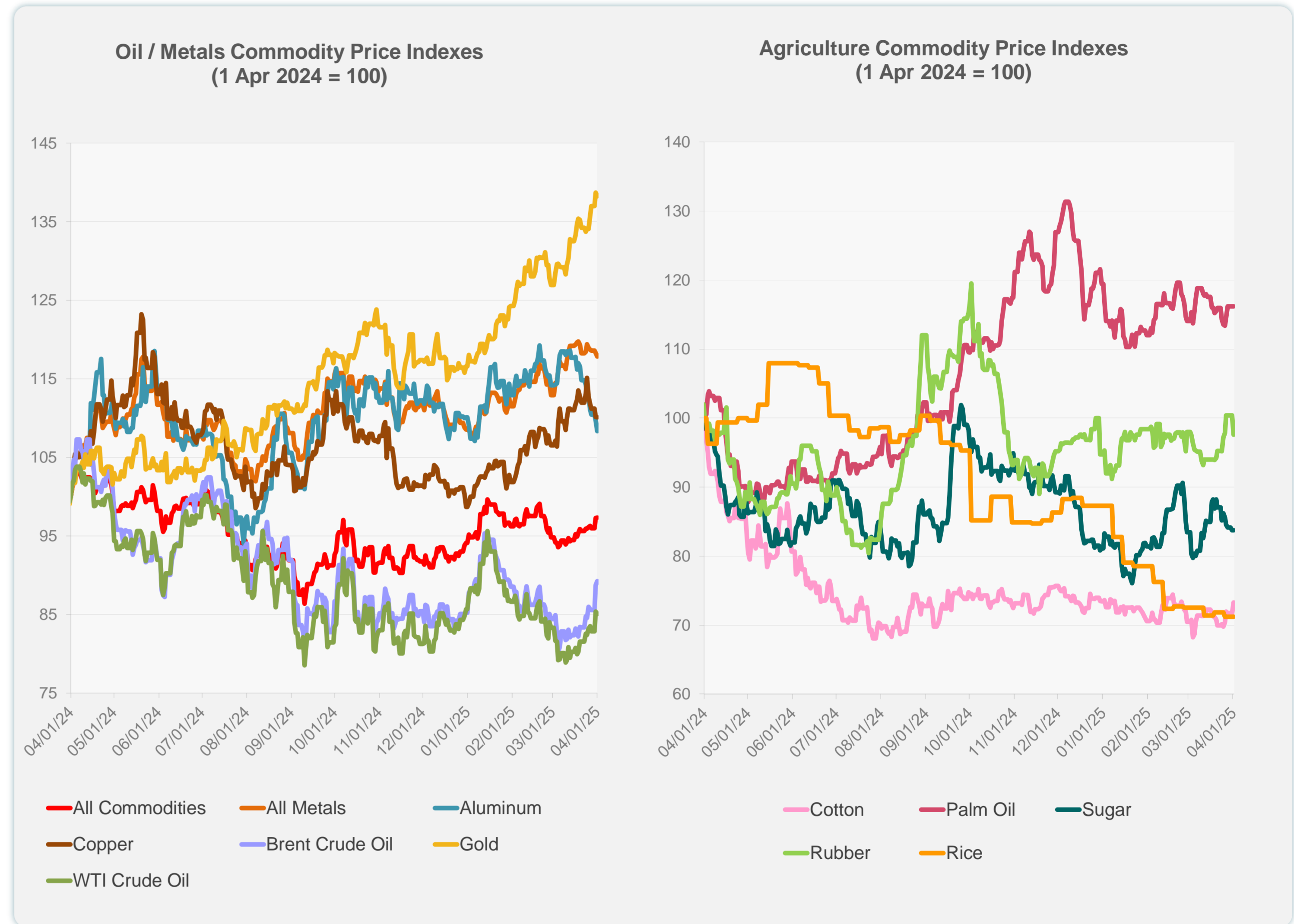
Sources: CEIC Data Company and Haver Analytics.

Daily Market Watch
COMMODITY PRICES

| | Unit | Latest Closing | % change from Previous Day | % change from 01-Jan-25 |
|---------------------|-------------------|----------------|----------------------------|-------------------------|
| S&P All Commodities | US\$ | 568.42 | 0.06 | 3.42 |
| S&P All Metals | US\$ | 333.75 | -0.37 | 8.58 |
| Aluminum | US\$/metric ton | 2,487.02 | -1.22 | -1.57 |
| Copper | US\$/metric ton | 9,650.69 | -0.08 | 11.53 |
| Cotton | US cents/lb | 65.75 | 2.21 | -0.23 |
| Brent Crude Oil | US\$/barrel | 77.62 | 0.59 | 4.74 |
| WTI Crude Oil | US\$/barrel | 71.20 | -0.39 | -0.73 |
| Gold | US\$/troy oz | 3,113.38 | -0.33 | 18.63 |
| Palm Oil | US\$/metric tonne | 1,069.78 | 0.00 | -2.76 |
| Rice ¹ | US\$/metric ton | 438.00 | 0.00 | -18.44 |
| Rubber ² | US\$/kg | 244.00 | -2.79 | 3.04 |
| Sugar | US cents/lb | 18.78 | 0.00 | 3.19 |

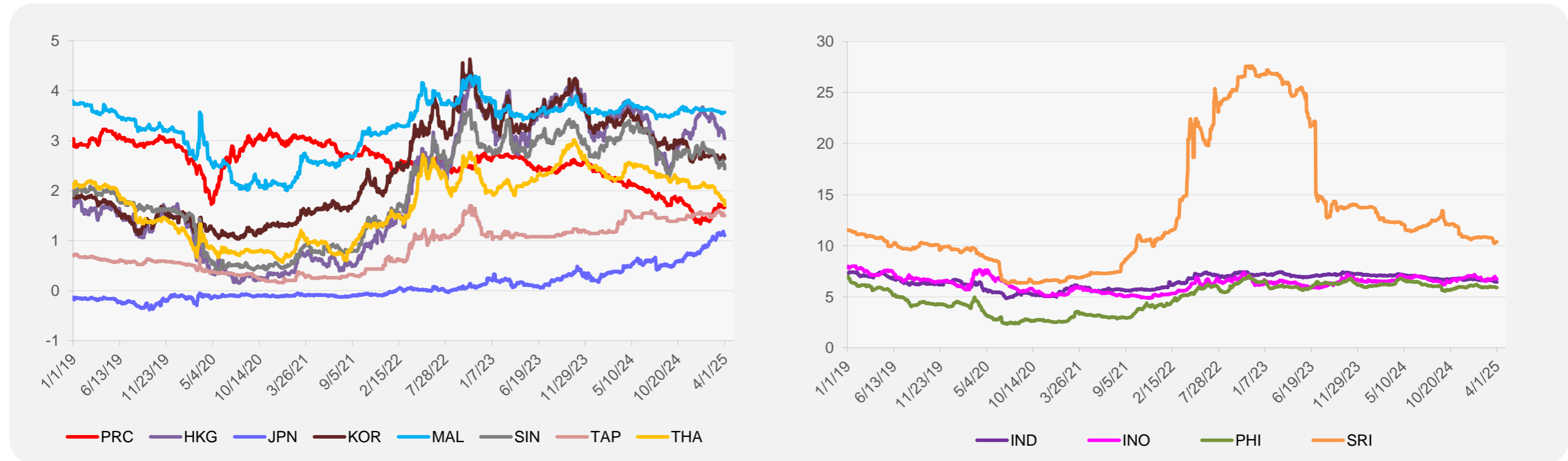
¹ Latest closing price from 26 March 2025.

² Singapore Exchange, Ribbed Smoked Sheet Rubber.

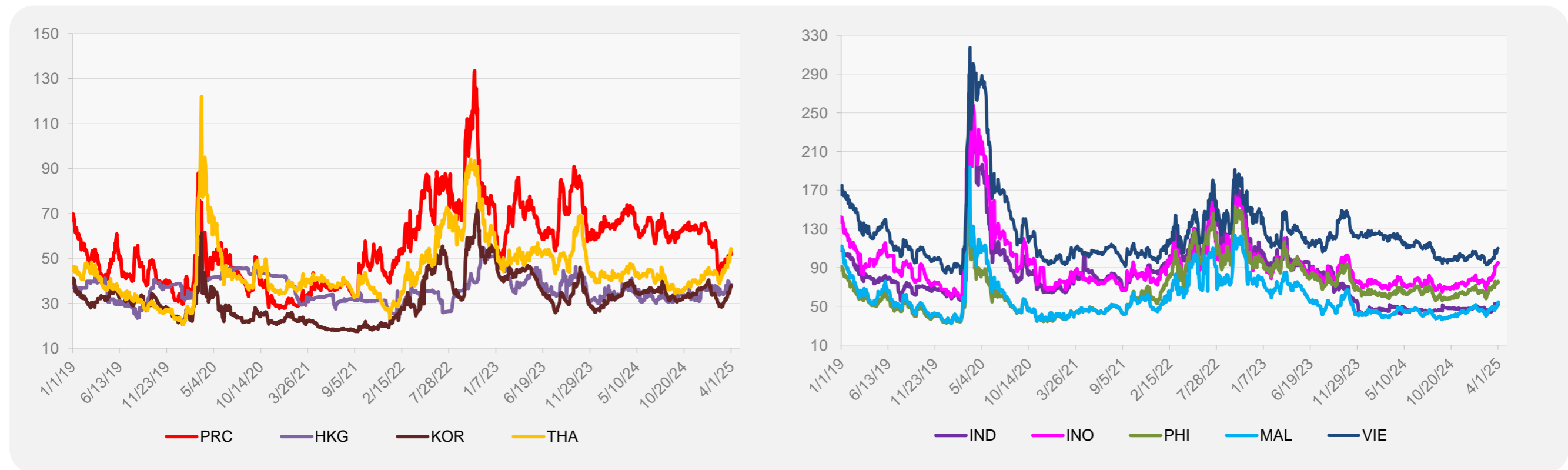


Source: ADB calculations using data from Bloomberg.

5-YEAR LOCAL CURRENCY GOVERNMENT BOND YIELDS (%)



5-YEAR CREDIT DEFAULT SWAP¹



¹ In USD and based on sovereign bonds.
Source: ADB calculations using data from Bloomberg.