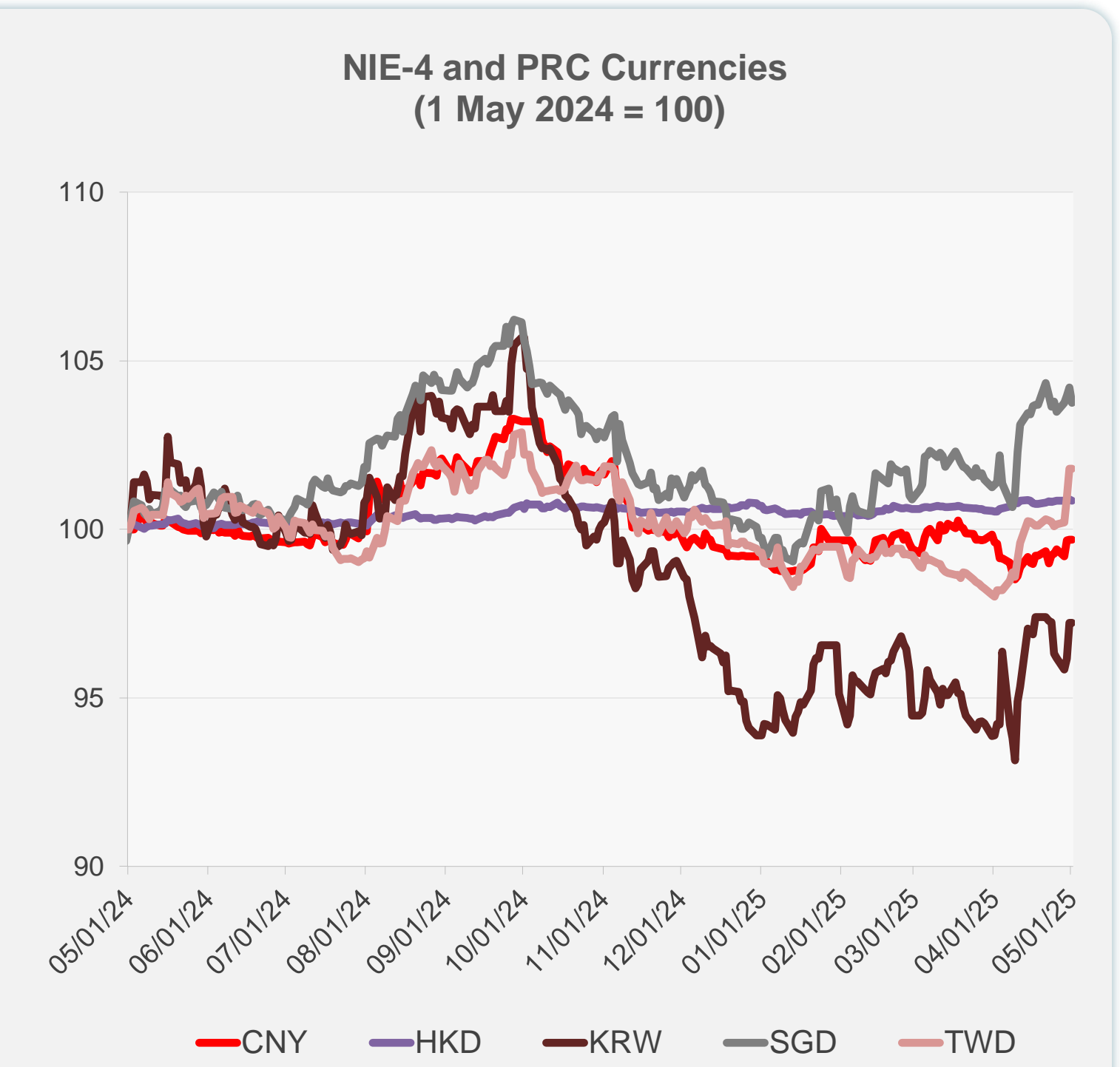
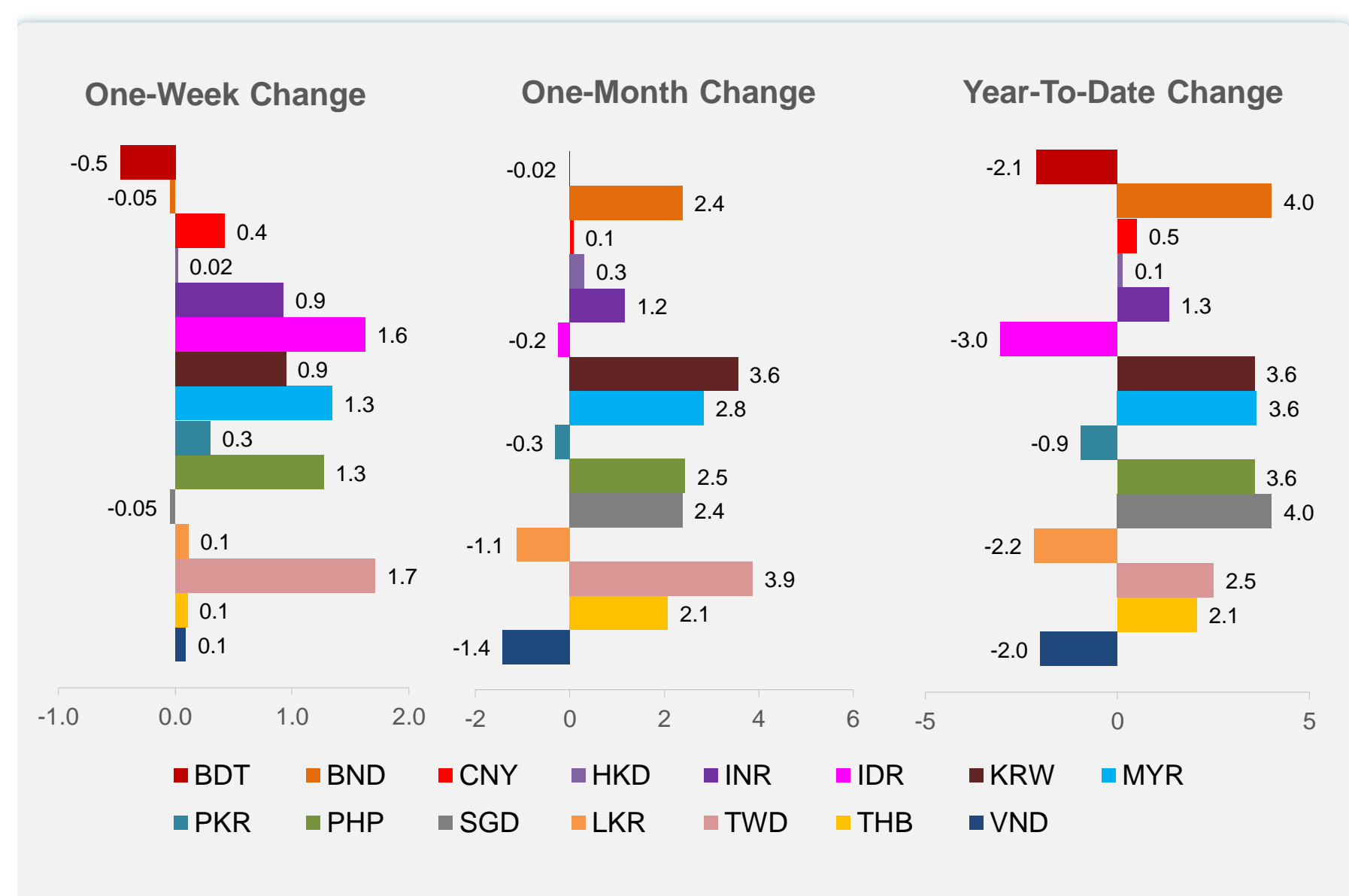
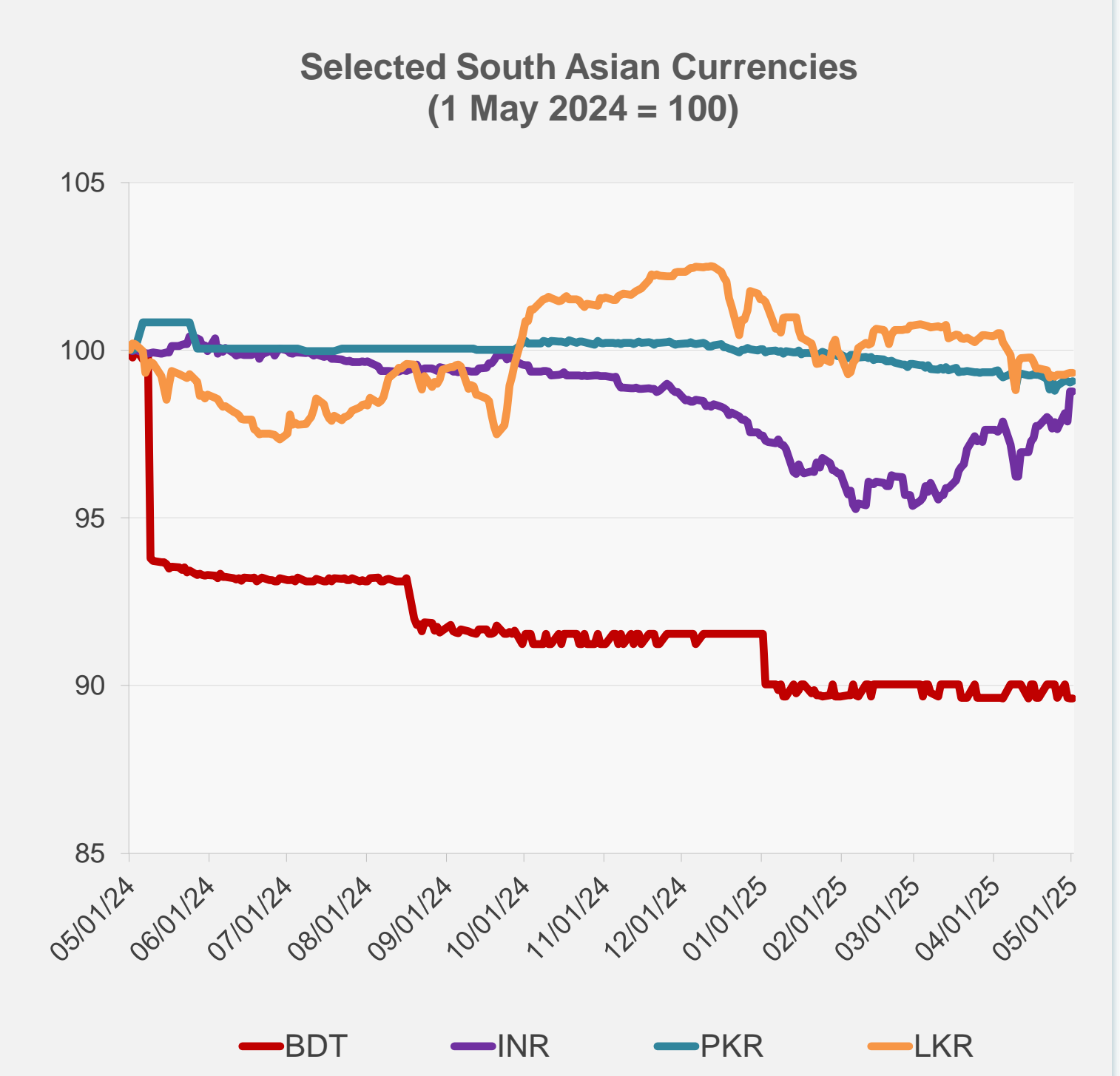
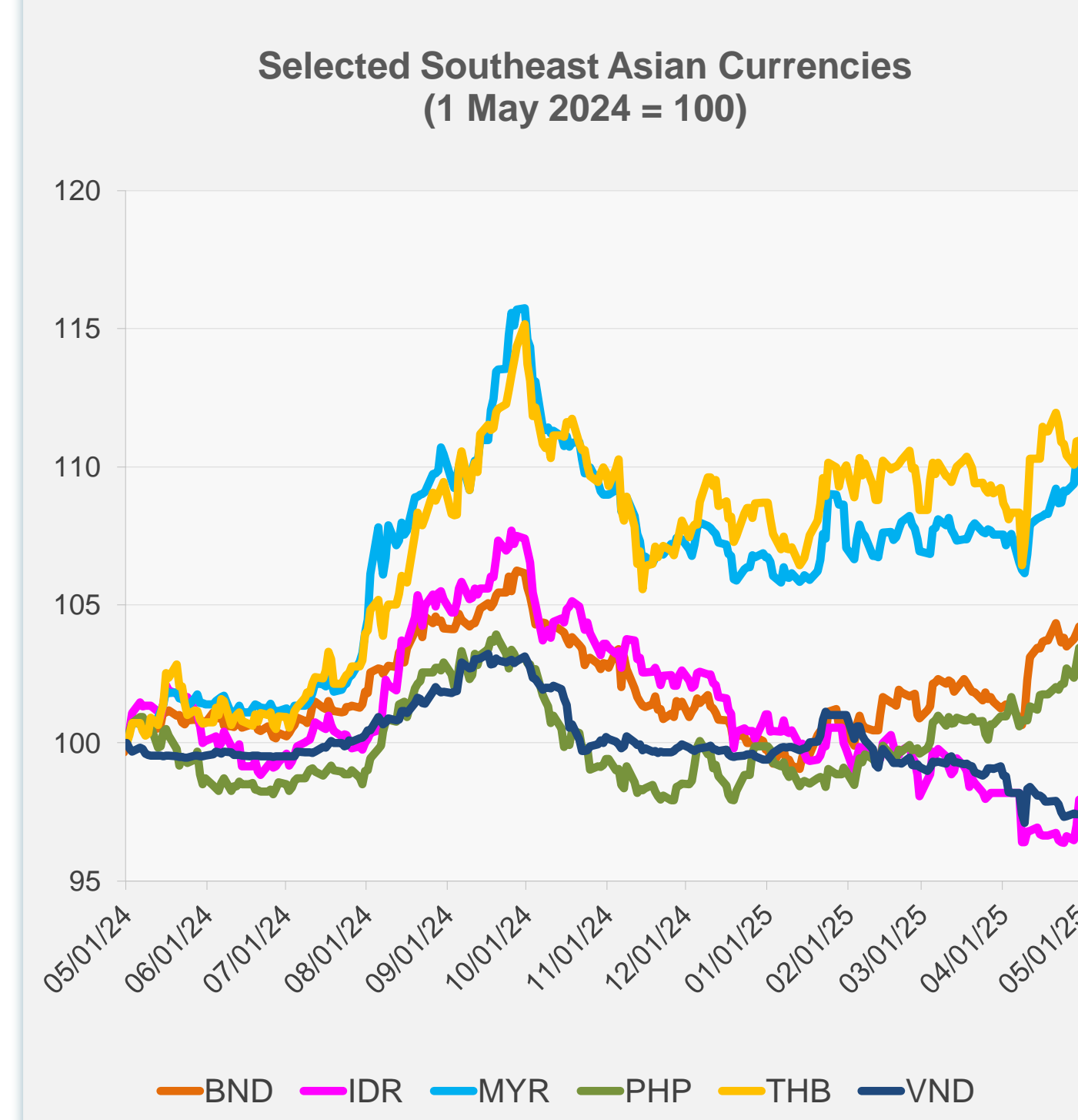


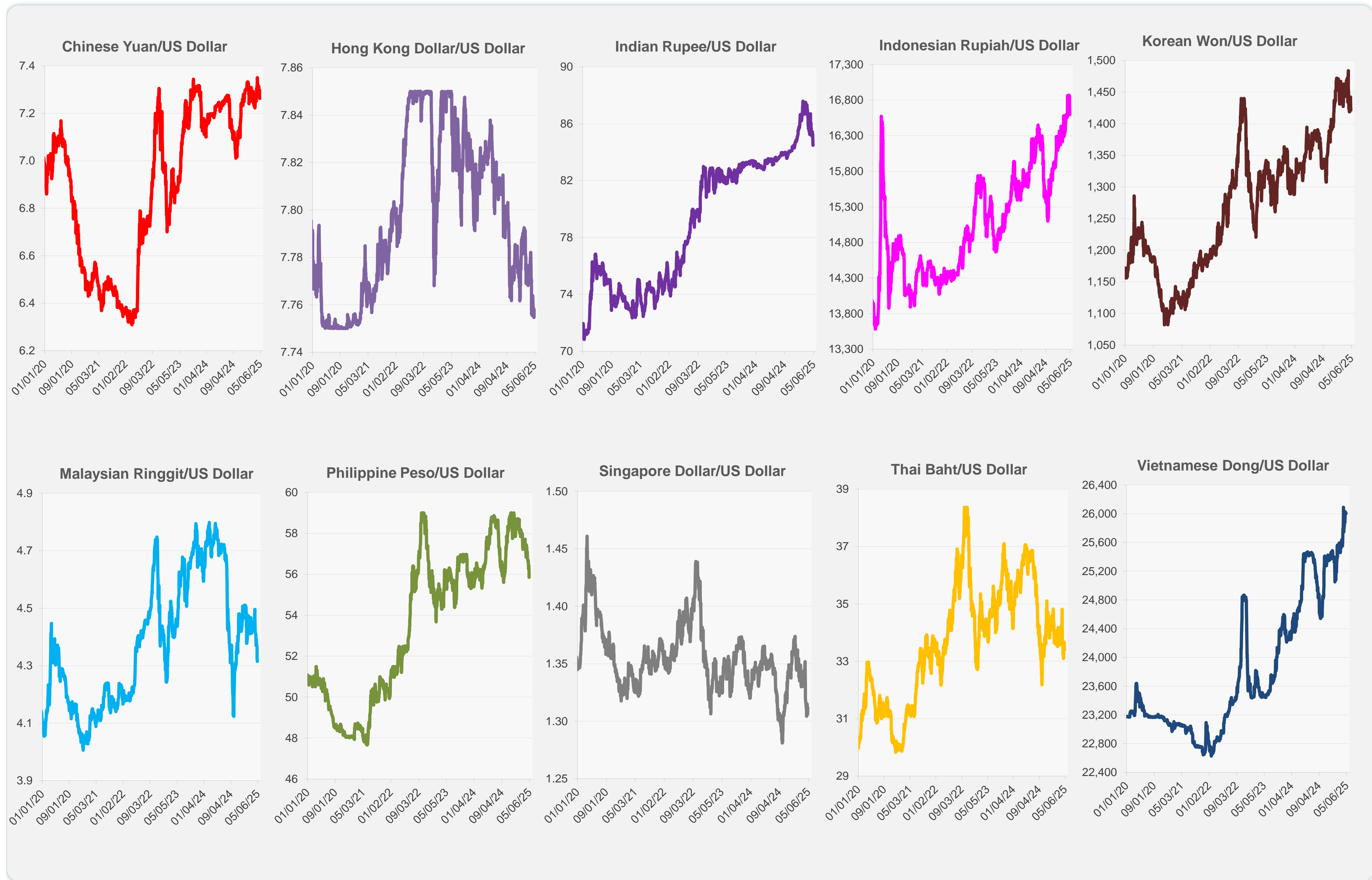
	Latest Closing	% change from Previous Day	% change from 01-Jan-25
Euro	0.89	-0.76	8.95
Japanese yen (JPY)	145.37	-1.88	8.11
Bangladeshi taka (BDT)	122.08	0.00	-2.11
Brunei dollar (BND)	1.31	-0.45	4.01
Chinese yuan (CNY)	7.26	0.00	0.50
Hong Kong dollar (HKD)	7.76	-0.03	0.14
Indian rupee (INR)	84.48	0.00	1.34
Indonesian rupiah (IDR)	16,600.00	0.00	-3.04
Korean won (KRW)	1,421.50	0.00	3.56
Malaysian ringgit (MYR)	4.32	0.00	3.63
Pakistan rupee (PKR)	281.03	0.03	-0.94
Philippine peso (PHP)	55.86	0.00	3.56
Singapore dollar (SGD)	1.31	-0.45	4.01
Sri Lanka rupee (LKR)	299.47	0.00	-2.16
Taipei,China NT dollar (TWD)	31.98	0.00	2.51
Thai baht (THB)	33.41	0.00	2.07
Vietnamese dong (VND)	26,005.00	0.00	-2.00



NIE = Newly Industrialized Economies

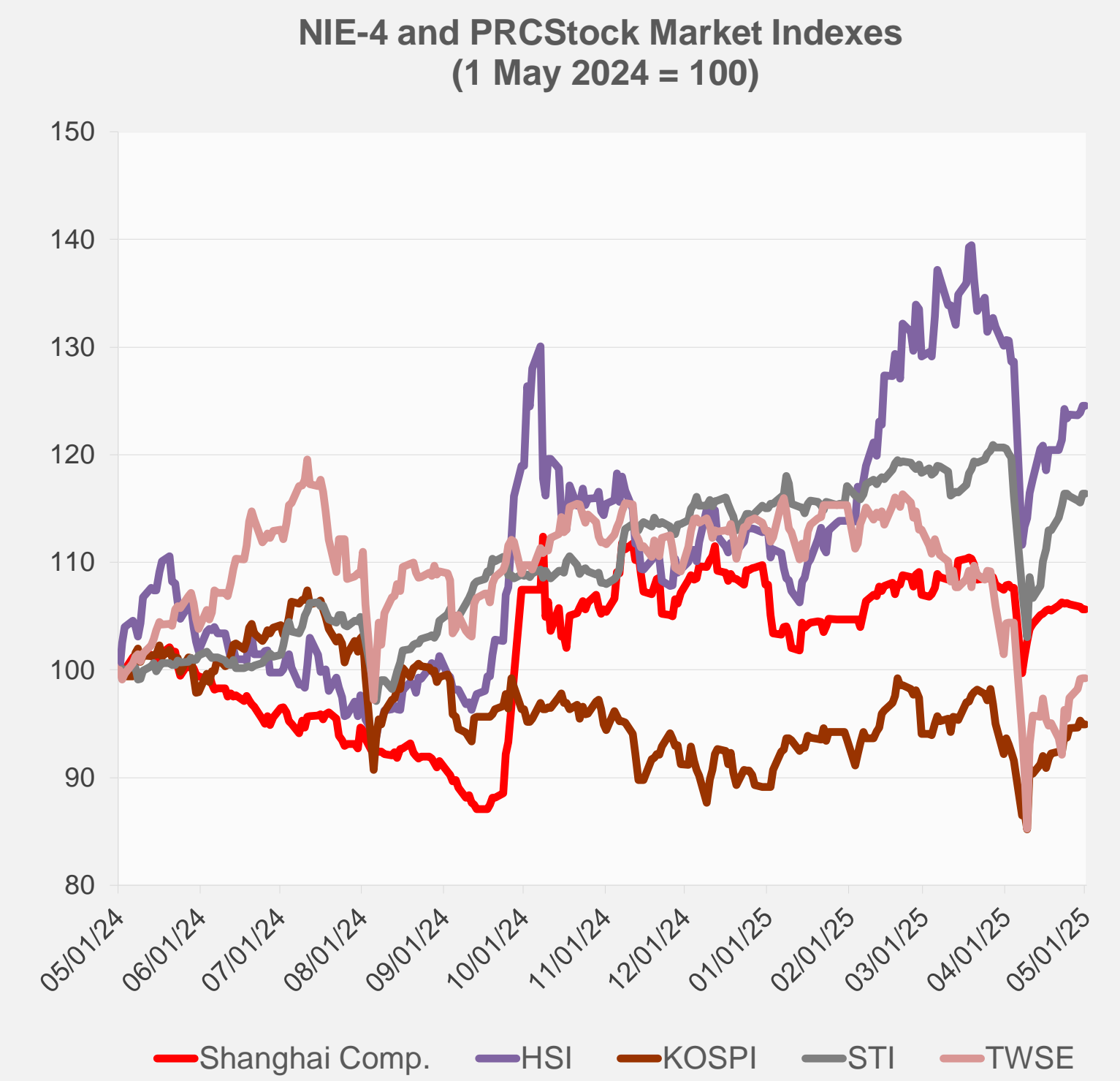


Note: Negative/Decreasing values indicate depreciation of local currency, and positive/increasing values indicate appreciation.
Source: ADB calculations using data from Haver Analytics.

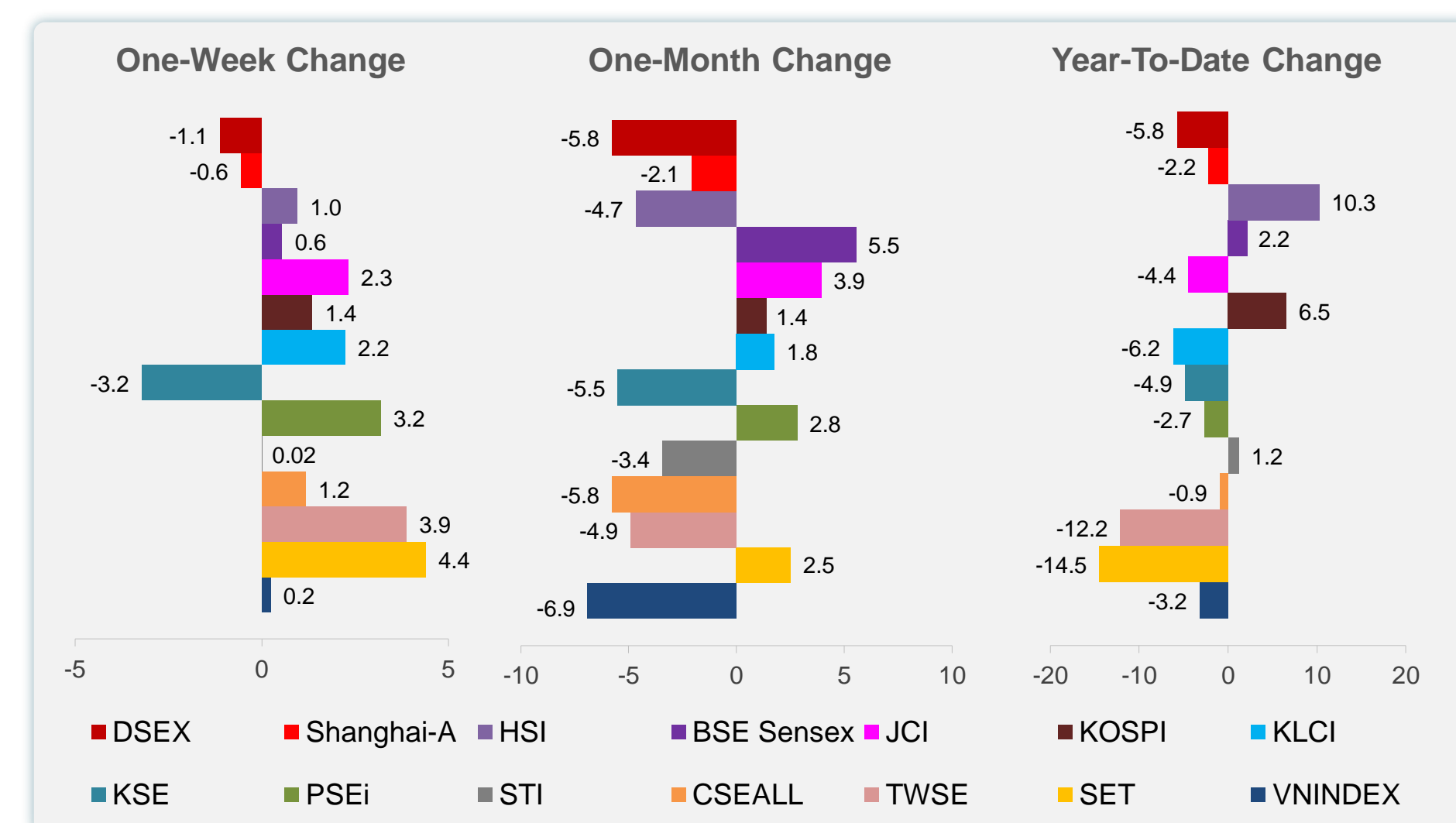
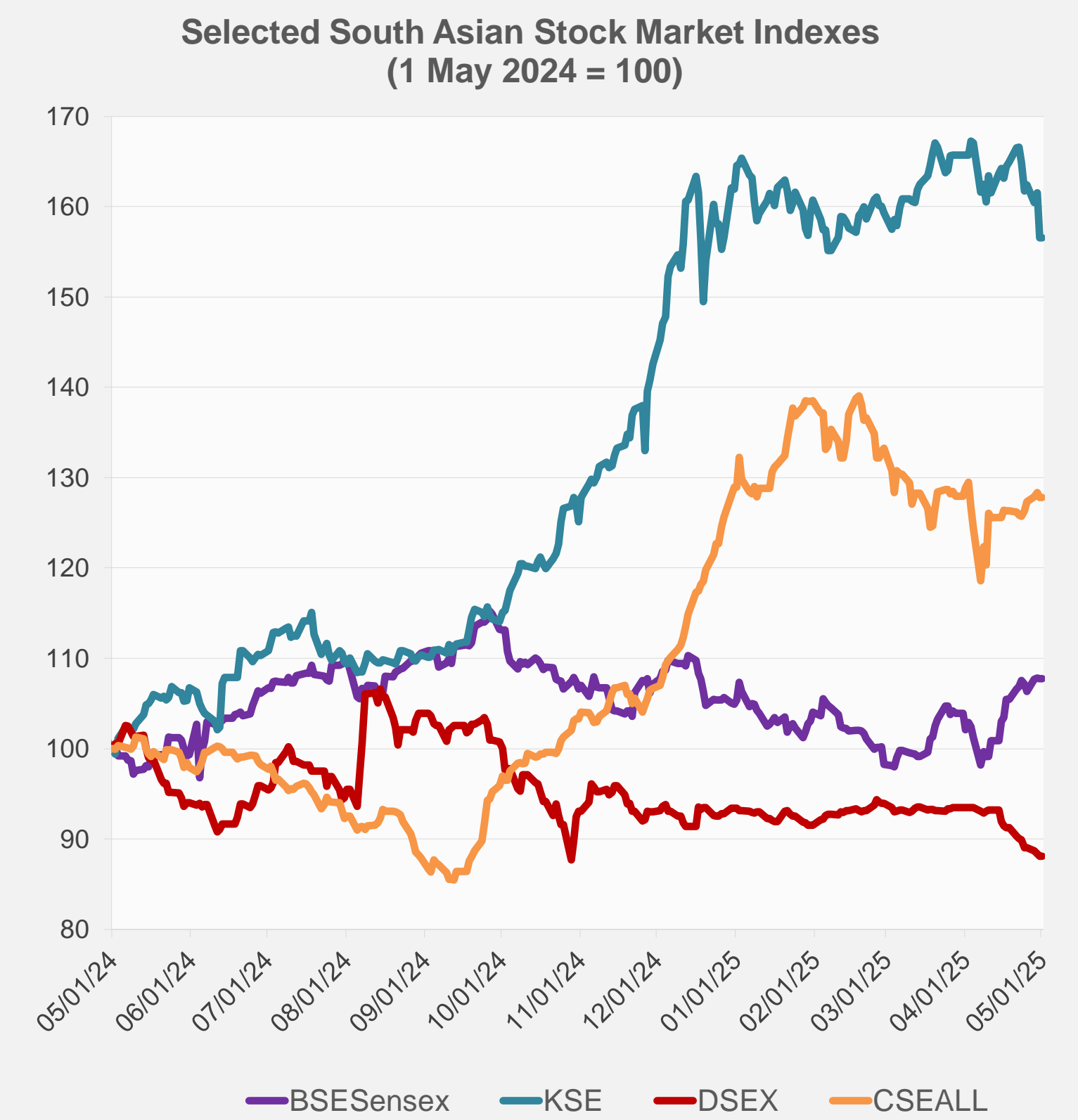
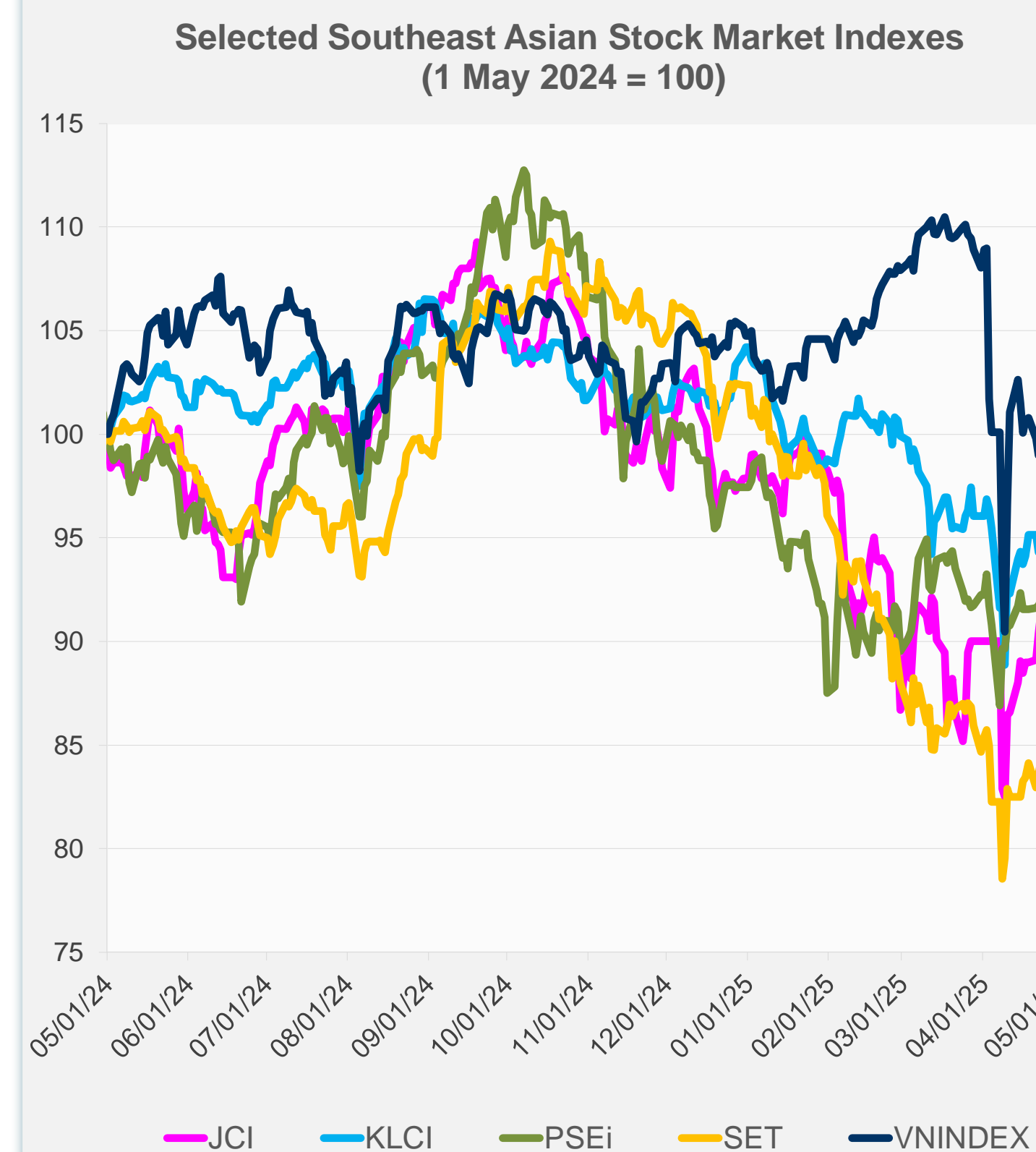


Source: Haver Analytics.

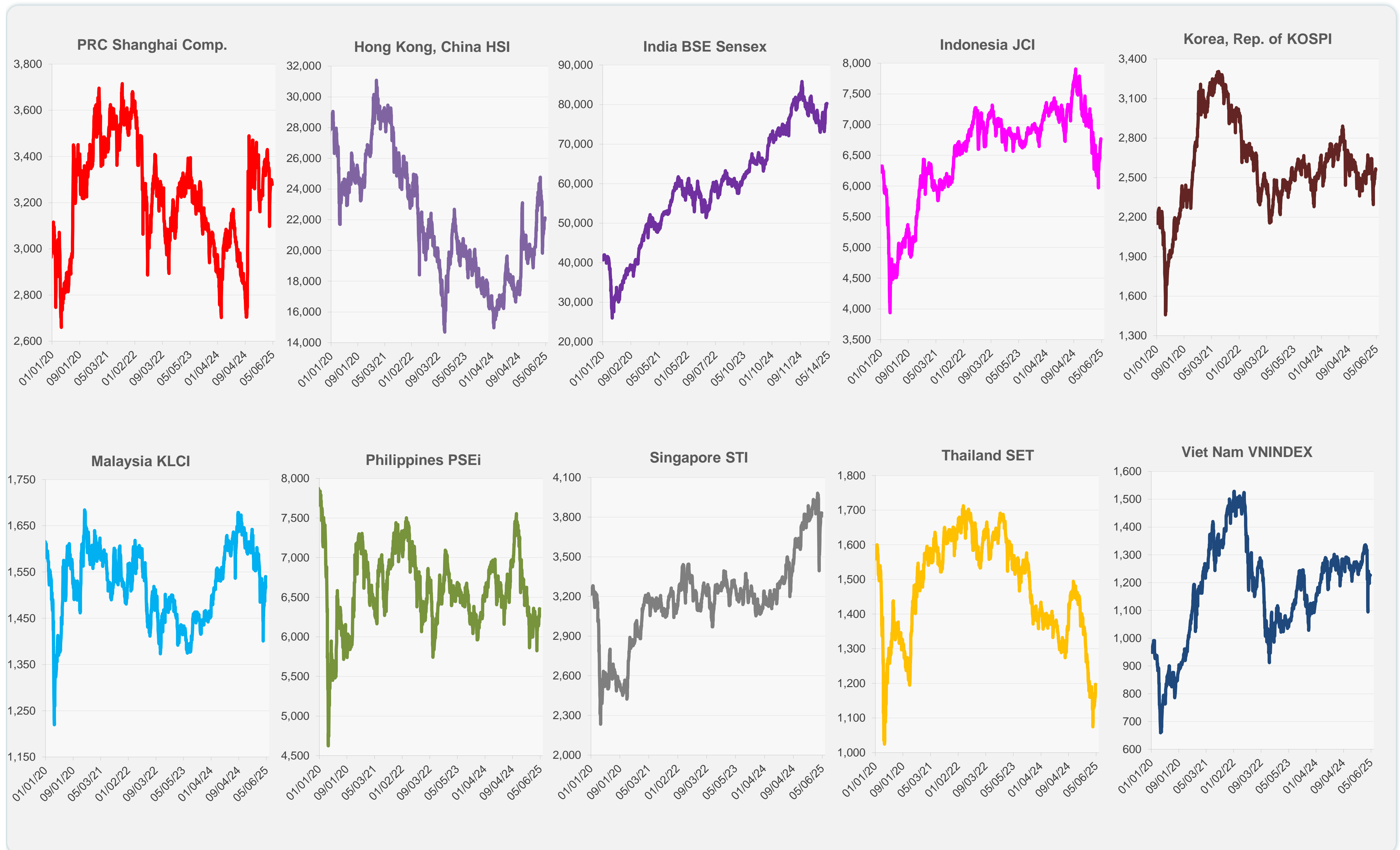
	Latest Closing	% change from Previous Day	% change from 01-Jan-25
US Dow Jones Ind Avg	40,752.96	0.21	-4.21
US NASDAQ	17,710.74	1.52	-8.29
US S&P 500	5,604.14	0.63	-4.72
UK FTSE 100	8,496.80	0.02	3.96
EURO STOXX 50	5,160.22	0.00	5.40
Japan NIKKEI 225	36,452.30	1.13	-8.63
Bangladesh DSEX	4,917.92	0.00	-5.75
PRC Shanghai Comp.	3,279.03	0.00	-2.17
Hong Kong, China HSI	22,119.41	0.00	10.27
India BSE Sensex	80,242.24	0.00	2.21
Indonesia JCI	6,766.80	0.00	-4.42
Korea, Rep. of KOSPI	2,556.61	0.00	6.55
Malaysia KLCI	1,540.22	0.00	-6.22
Pakistan KSE 100	111,326.57	0.00	-4.86
Philippines PSEi	6,354.99	0.00	-2.66
Singapore STI	3,832.51	0.00	1.19
Sri Lanka CSEALL	15,799.94	0.00	-0.91
Taipei, China TWSE	20,235.03	0.00	-12.16
Thailand SET	1,197.26	0.00	-14.49
Viet Nam VNINDEX	1,226.30	0.00	-3.20



NIE = Newly Industrialized Economies



Sources: ADB calculations using data from CEIC Data Company and Haver Analytics.

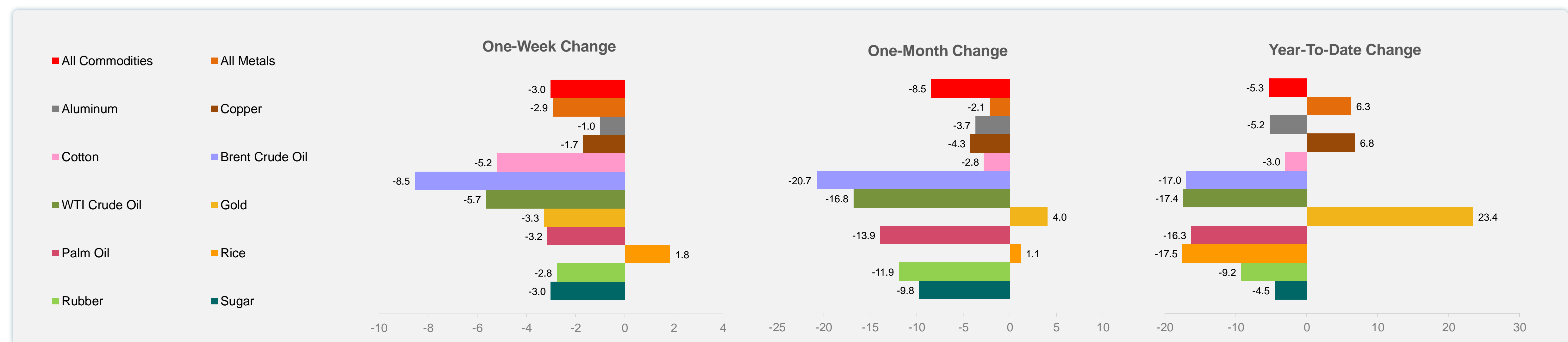
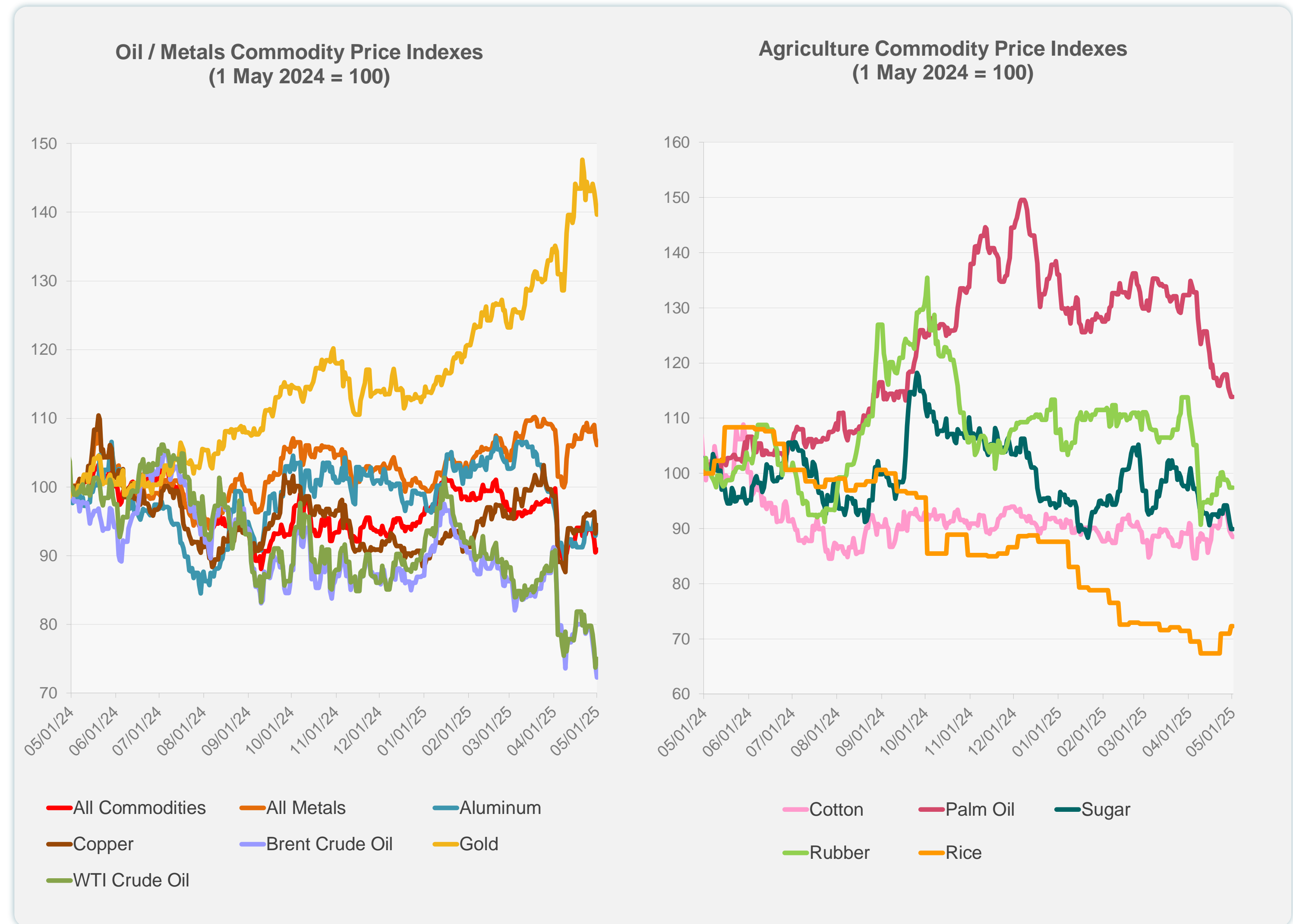


Sources: CEIC Data Company and Haver Analytics.

Daily Market Watch
COMMODITY PRICES

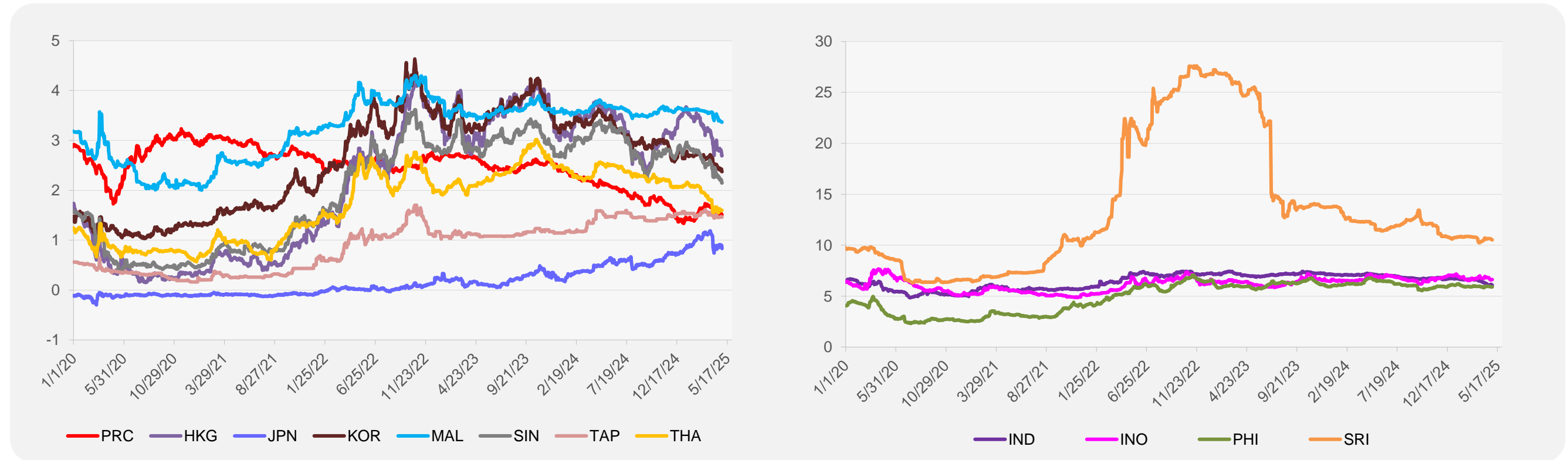
	Unit	Latest Closing	% change from Previous Day	% change from 01-Jan-25
S&P All Commodities	US\$	520.28	0.41	-5.34
S&P All Metals	US\$	326.60	-0.97	6.25
Aluminum	US\$/metric ton	2,395.14	0.99	-5.21
Copper	US\$/metric ton	9,239.94	1.34	6.79
Cotton	US cents/lb	63.91	-0.56	-3.02
Brent Crude Oil	US\$/barrel	61.52	-2.66	-16.98
WTI Crude Oil	US\$/barrel	59.24	1.77	-17.40
Gold	US\$/troy oz	3,239.20	-1.51	23.42
Palm Oil	US\$/metric tonne	920.92	0.00	-16.29
Rice ¹	US\$/metric ton	443.00	0.00	-17.50
Rubber ²	US\$/kg	214.90	0.00	-9.25
Sugar	US cents/lb	17.38	0.00	-4.51

¹ Latest closing price from 30 April 2025.
² Singapore Exchange, Ribbed Smoked Sheet Rubber.

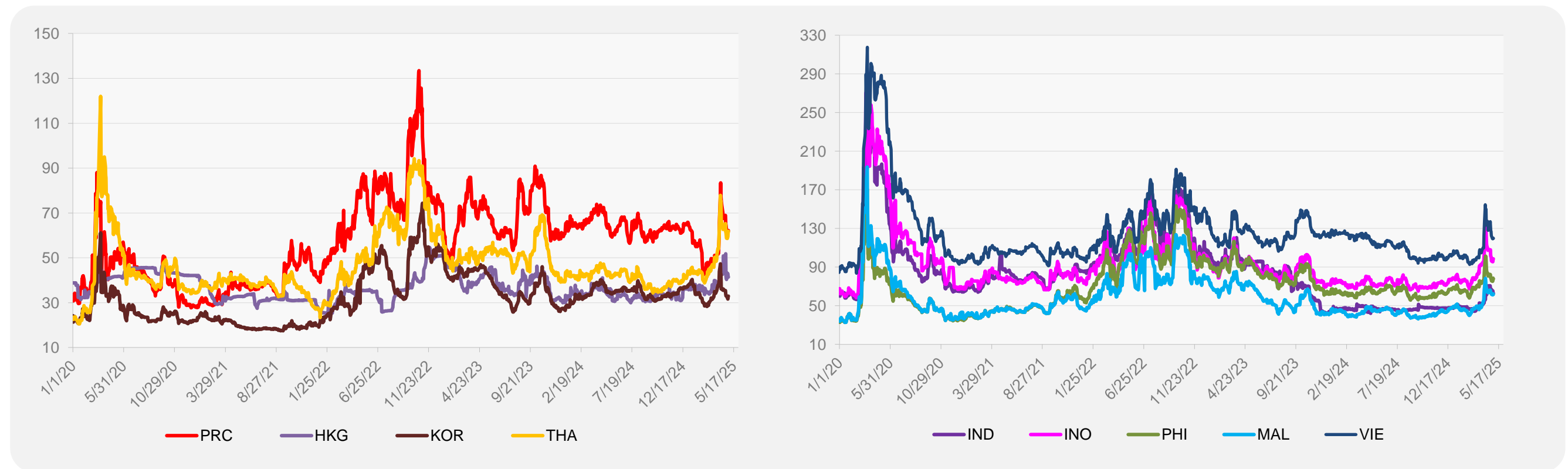


Source: ADB calculations using data from Bloomberg.

5-YEAR LOCAL CURRENCY GOVERNMENT BOND YIELDS (%)



5-YEAR CREDIT DEFAULT SWAP¹



¹ In USD and based on sovereign bonds.
Source: ADB calculations using data from Bloomberg.