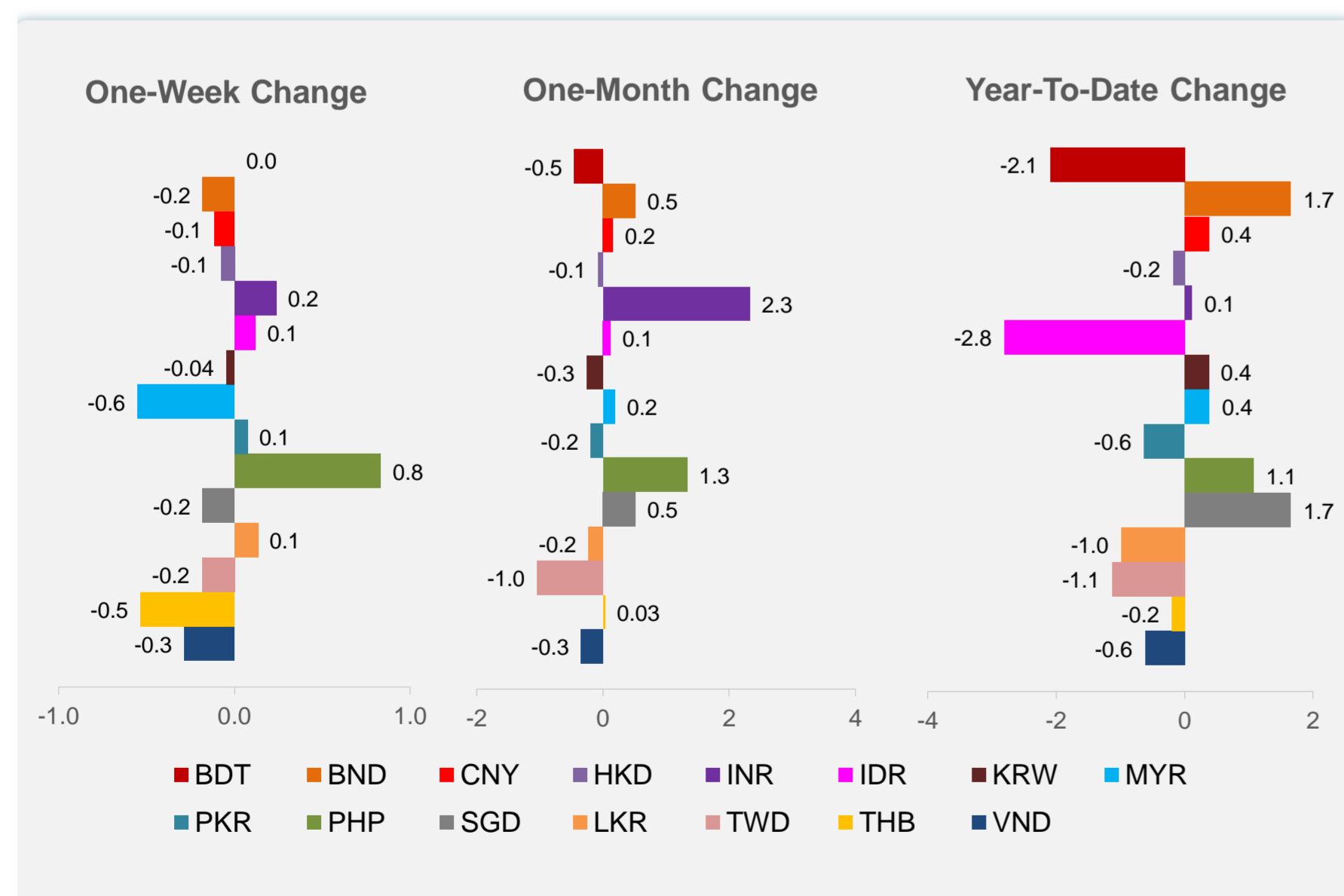
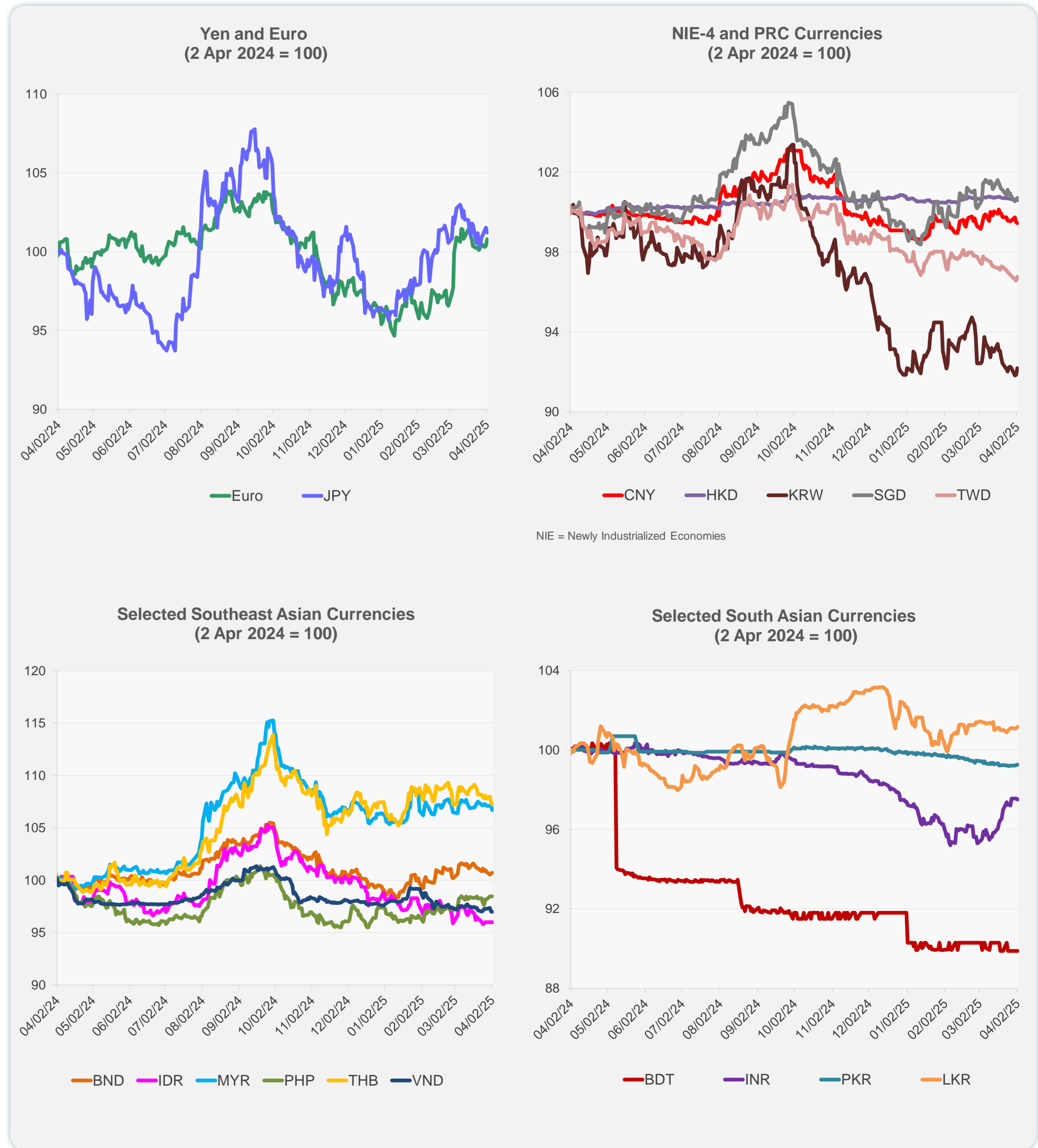
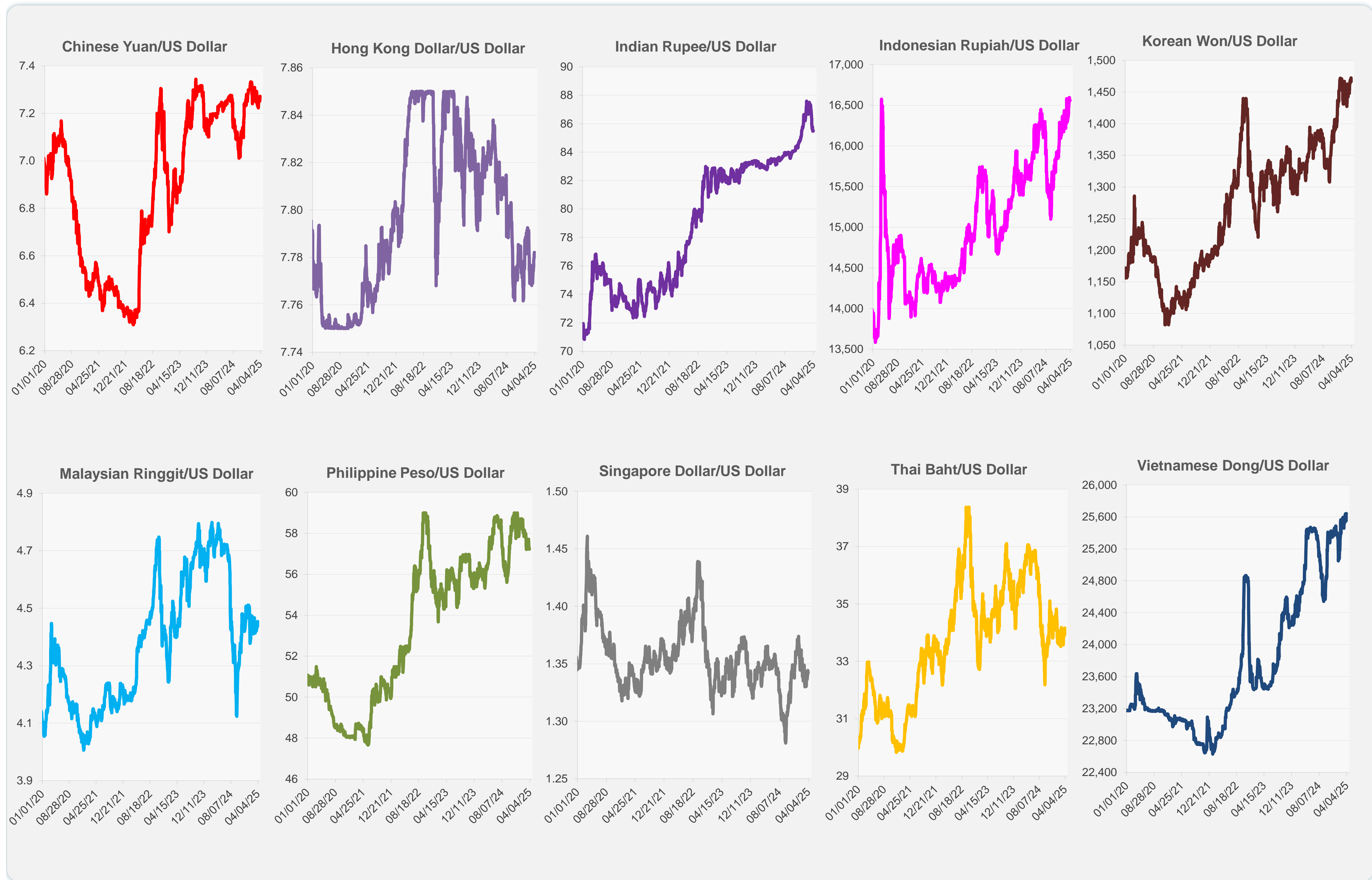


	Latest Closing	% change from Previous Day	% change from 01-Jan-25
Euro	0.92	0.42	4.84
Japanese yen (JPY)	149.73	-0.31	4.97
Bangladeshi taka (BDT)	122.05	0.00	-2.09
Brunei dollar (BND)	1.34	0.07	1.66
Chinese yuan (CNY)	7.27	-0.04	0.38
Hong Kong dollar (HKD)	7.78	-0.01	-0.18
Indian rupee (INR)	85.51	-0.05	0.12
Indonesian rupiah (IDR)	16,560.00	0.00	-2.81
Korean won (KRW)	1,466.65	0.37	0.38
Malaysian ringgit (MYR)	4.45	-0.37	0.39
Pakistan rupee (PKR)	280.14	0.01	-0.63
Philippine peso (PHP)	57.23	0.00	1.08
Singapore dollar (SGD)	1.34	0.07	1.66
Sri Lanka rupee (LKR)	295.92	0.05	-0.99
Taipei,China NT dollar (TWD)	33.16	0.19	-1.12
Thai baht (THB)	34.16	-0.18	-0.20
Vietnamese dong (VND)	25,643.00	-0.03	-0.62



Note: Negative/Decreasing values indicate depreciation of local currency, and positive/increasing values indicate appreciation.  
Source: ADB calculations using data from Haver Analytics.



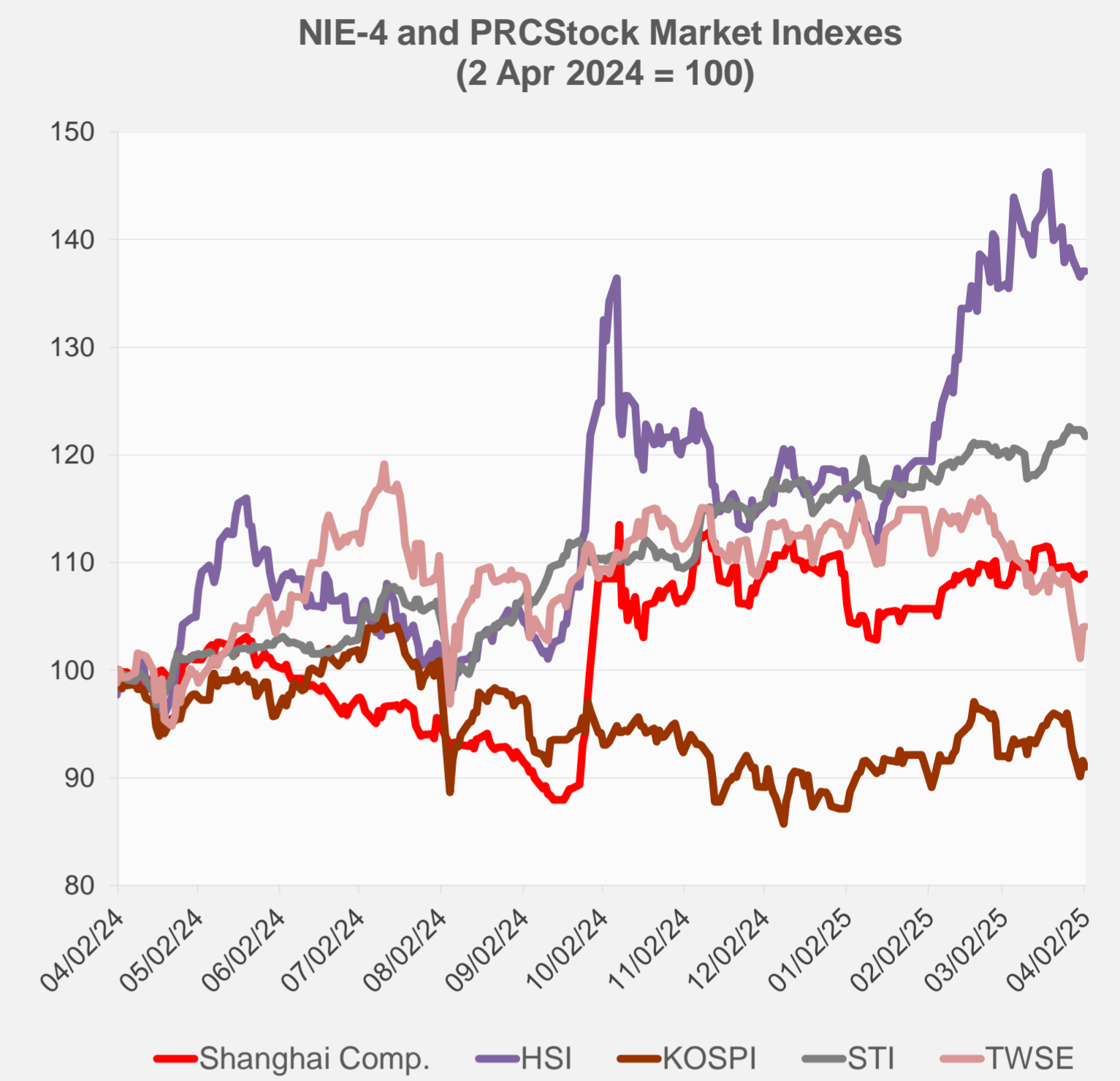
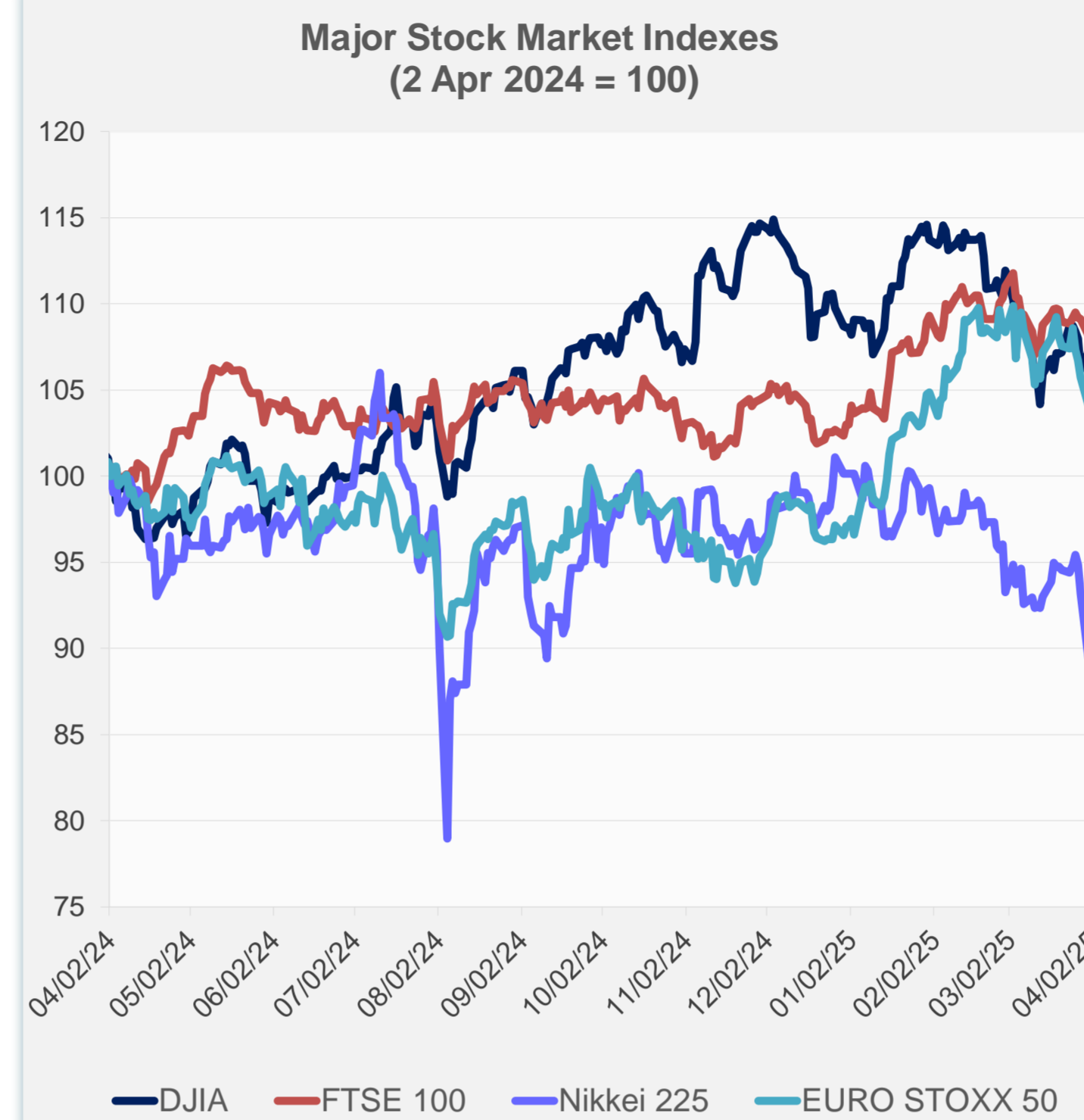
Source: Haver Analytics.



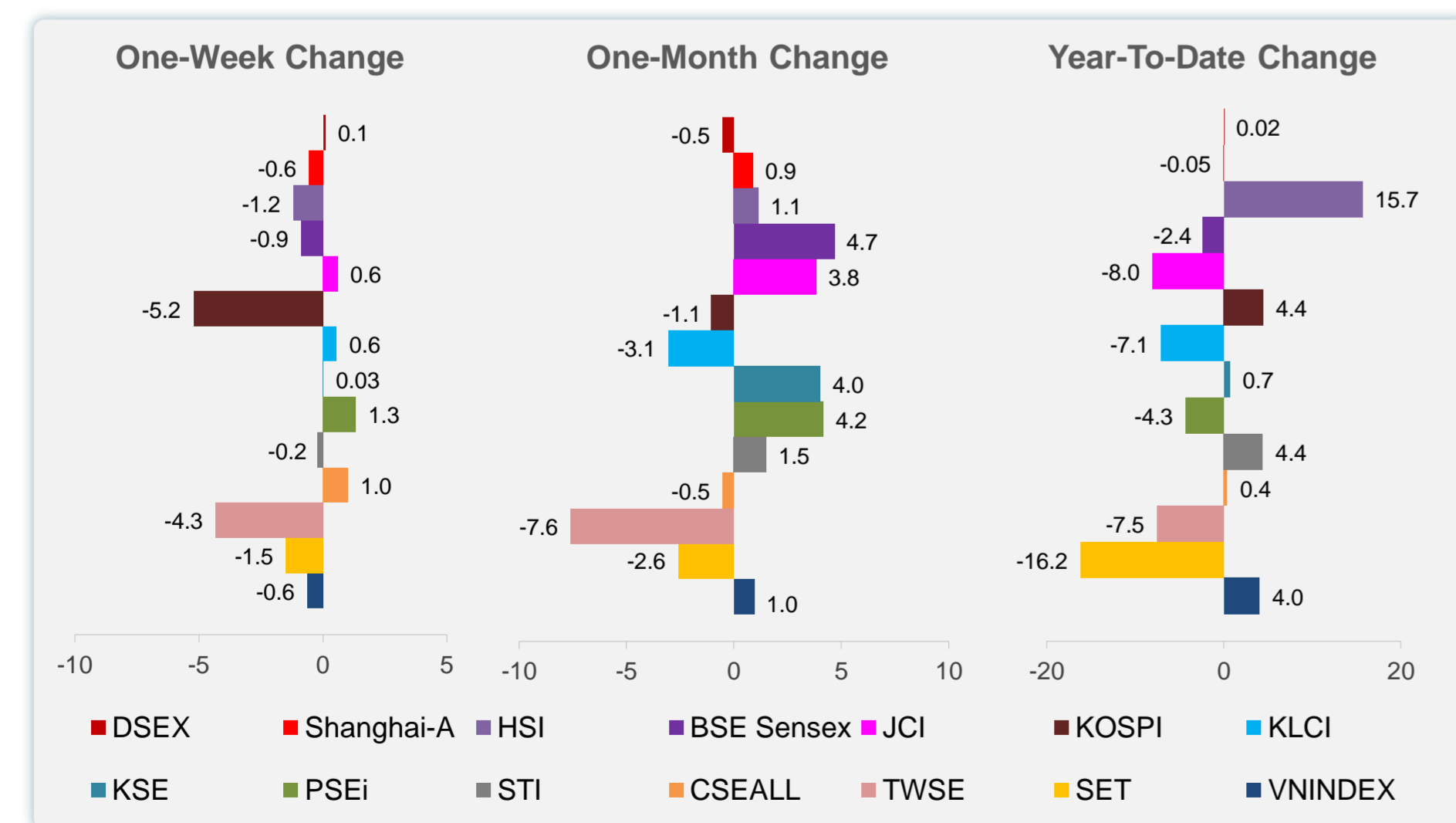
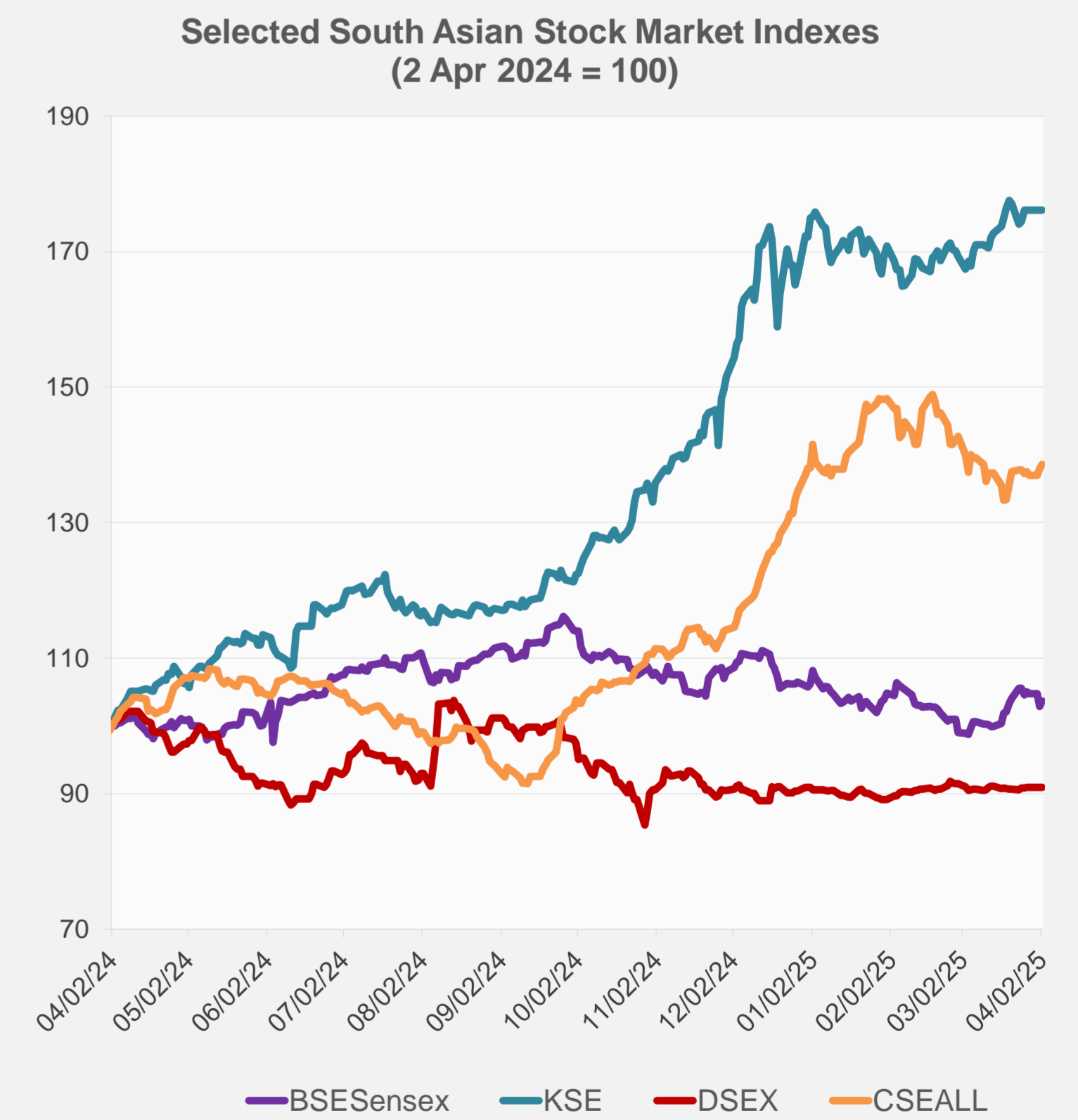
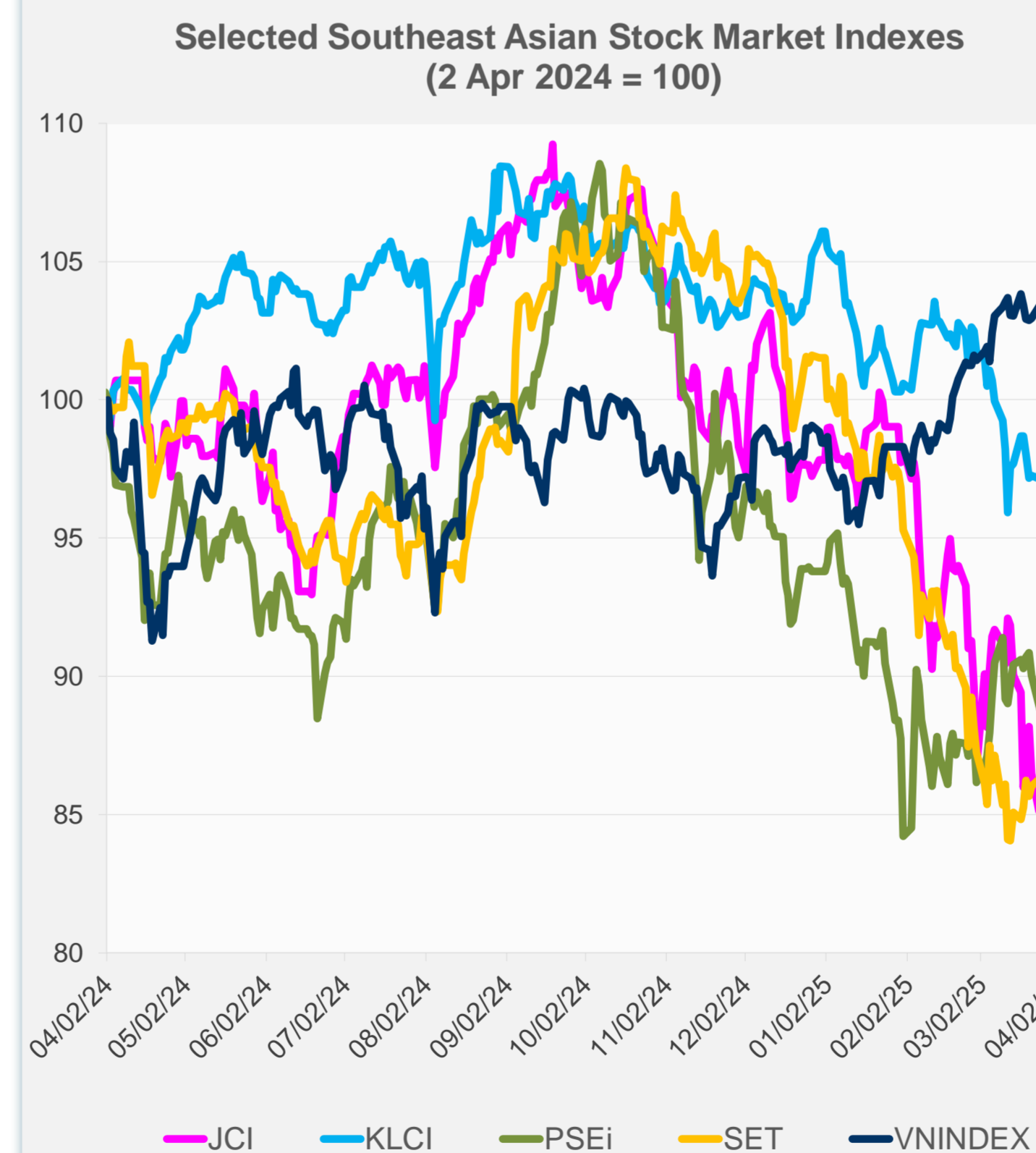
# Daily Market Watch STOCK INDEXES

3 April 2025, 9:00 AM Manila

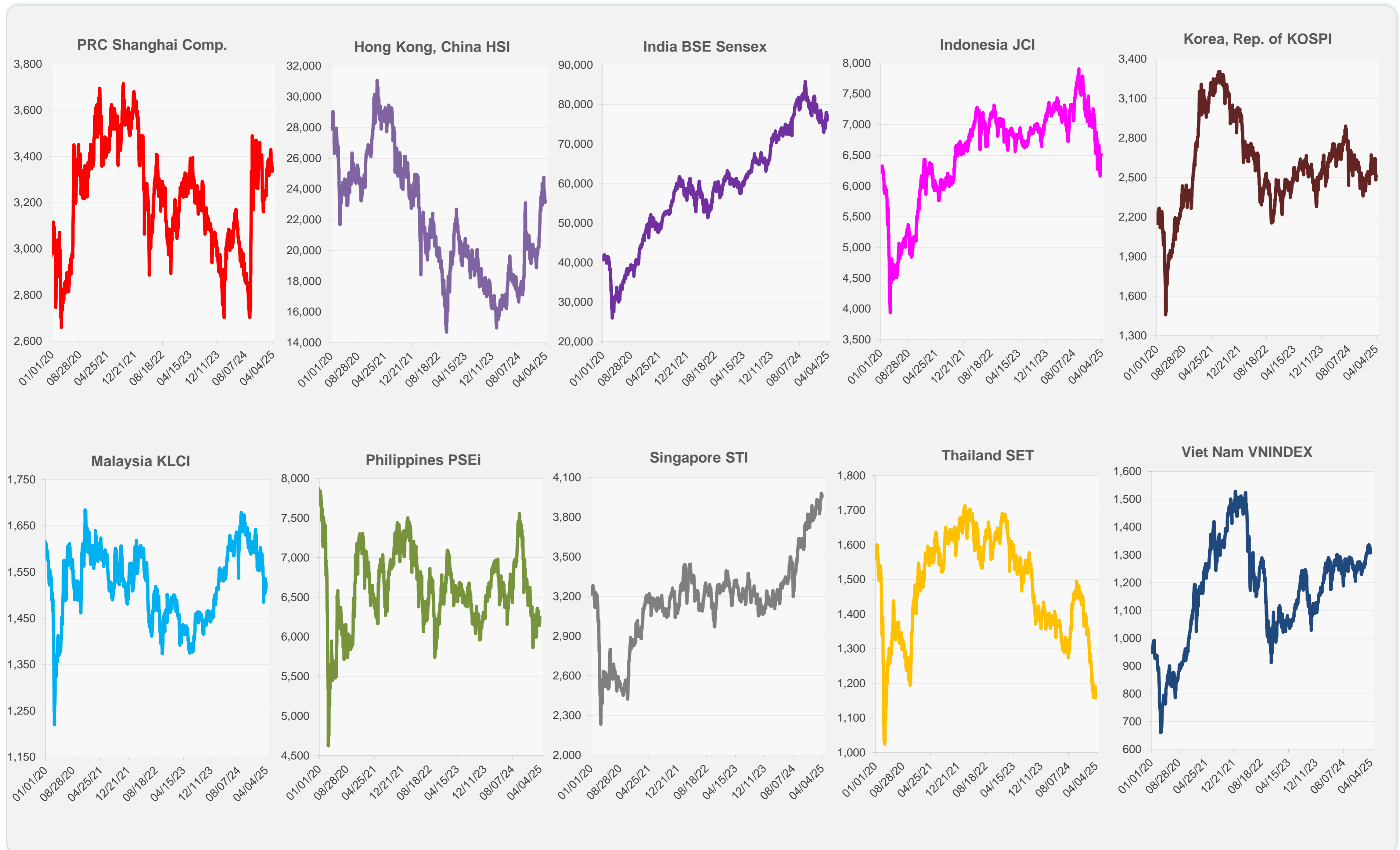
	Latest Closing	% change from Previous Day	% change from 01-Jan-25
US Dow Jones Ind Avg	42,225.32	0.56	-0.75
US NASDAQ	17,601.05	0.87	-8.85
US S&P 500	5,670.97	0.67	-3.58
UK FTSE 100	8,608.48	-0.30	5.33
EURO STOXX 50	5,303.95	-0.31	8.33
Japan NIKKEI 225	35,725.87	0.28	-10.45
Bangladesh DSEX	5,219.16	0.00	0.02
PRC Shanghai Comp.	3,350.13	0.05	-0.05
Hong Kong, China HSI	23,202.53	-0.02	15.67
India BSE Sensex	76,617.44	0.78	-2.41
Indonesia JCI	6,510.62	0.00	-8.04
Korea, Rep. of KOSPI	2,505.86	-0.62	4.43
Malaysia KLCI	1,526.52	0.85	-7.05
Pakistan KSE 100	117,806.74	0.00	0.68
Philippines PSEi	6,247.68	1.08	-4.31
Singapore STI	3,954.21	-0.37	4.40
Sri Lanka CSEALL	16,007.44	0.46	0.39
Taipei, China TWSE	21,298.22	0.08	-7.54
Thailand SET	1,172.69	0.40	-16.25
Viet Nam VNINDEX	1,317.83	0.04	4.03



NIE = Newly Industrialized Economies



Sources: ADB calculations using data from CEIC Data Company and Haver Analytics.



Sources: CEIC Data Company and Haver Analytics.



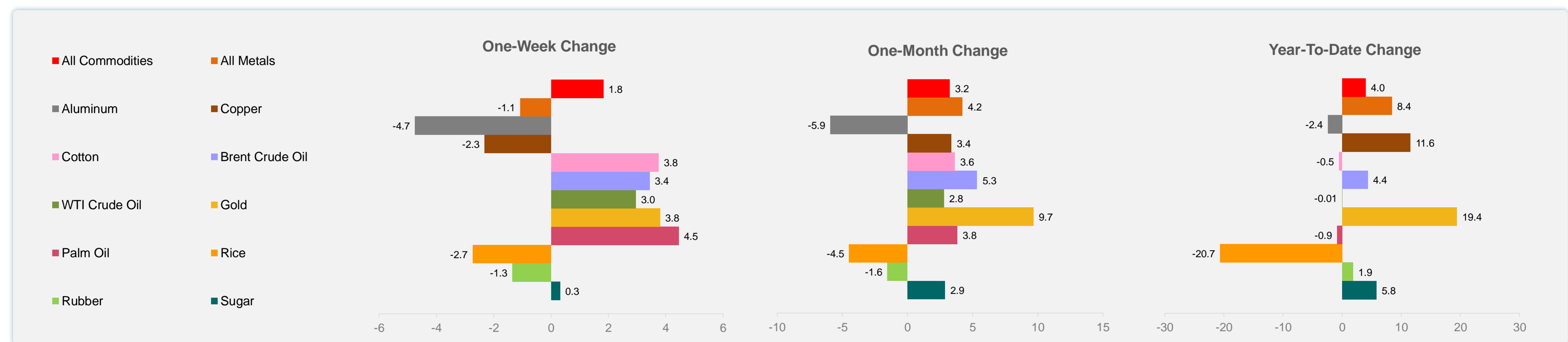
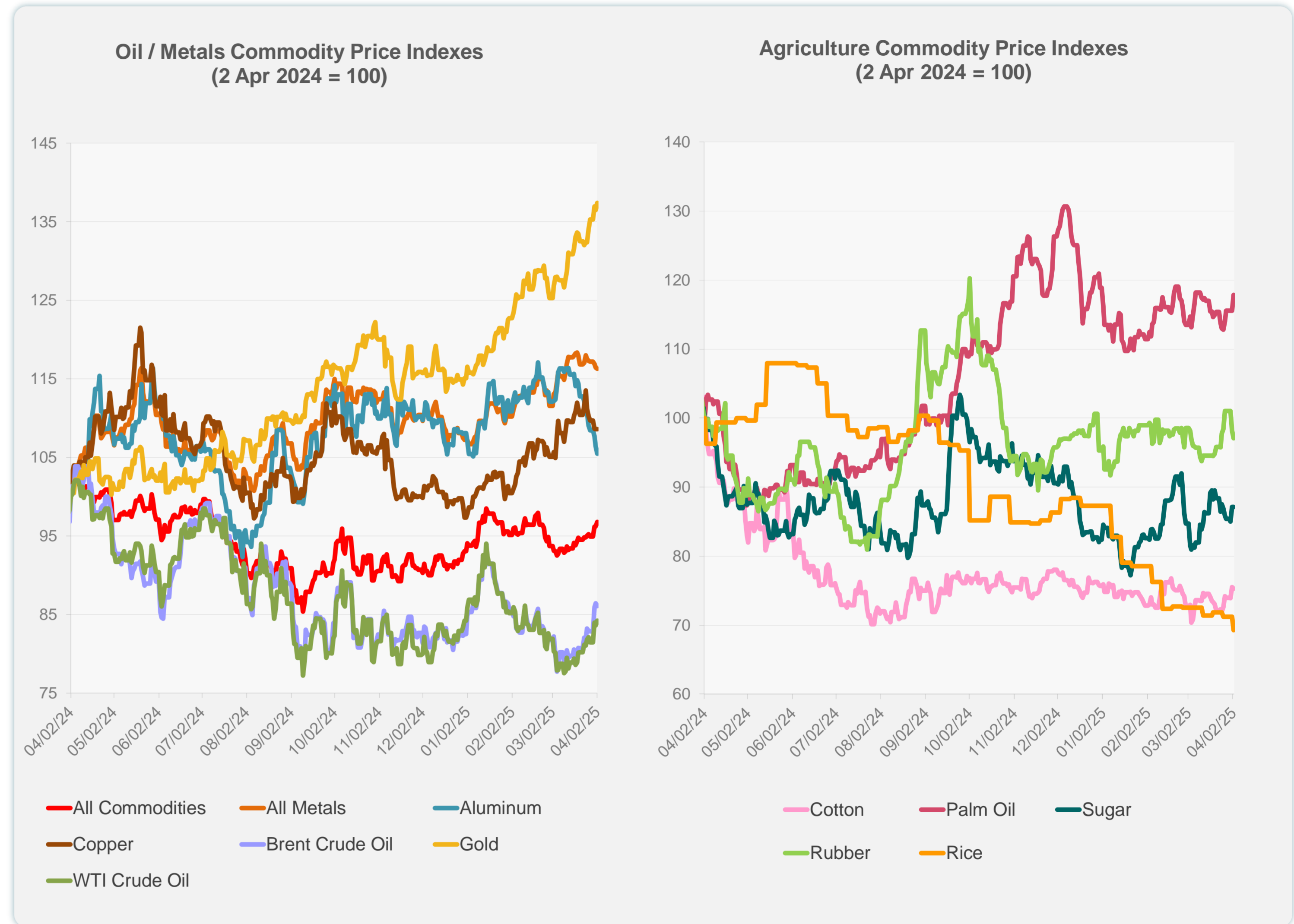
Daily Market Watch  
**COMMODITY PRICES**

3 April 2025, 9:00 AM Manila

	Unit	Latest Closing	% change from Previous Day	% change from 01-Jan-25
S&P All Commodities	US\$	571.52	0.55	3.98
S&P All Metals	US\$	333.27	-0.14	8.42
Aluminum	US\$/metric ton	2,465.55	-0.86	-2.42
Copper	US\$/metric ton	9,653.73	0.03	11.57
Cotton	US cents/lb	65.55	-0.30	-0.53
Brent Crude Oil	US\$/barrel	77.33	-0.37	4.35
WTI Crude Oil	US\$/barrel	71.71	0.72	-0.01
Gold	US\$/troy oz	3,134.17	0.67	19.42
Palm Oil	US\$/metric tonne	1,090.62	1.95	-0.86
Rice <sup>1</sup>	US\$/metric ton	426.00	-2.74	-20.67
Rubber <sup>2</sup>	US\$/kg	241.20	-1.15	1.86
Sugar	US cents/lb	19.26	0.00	5.82

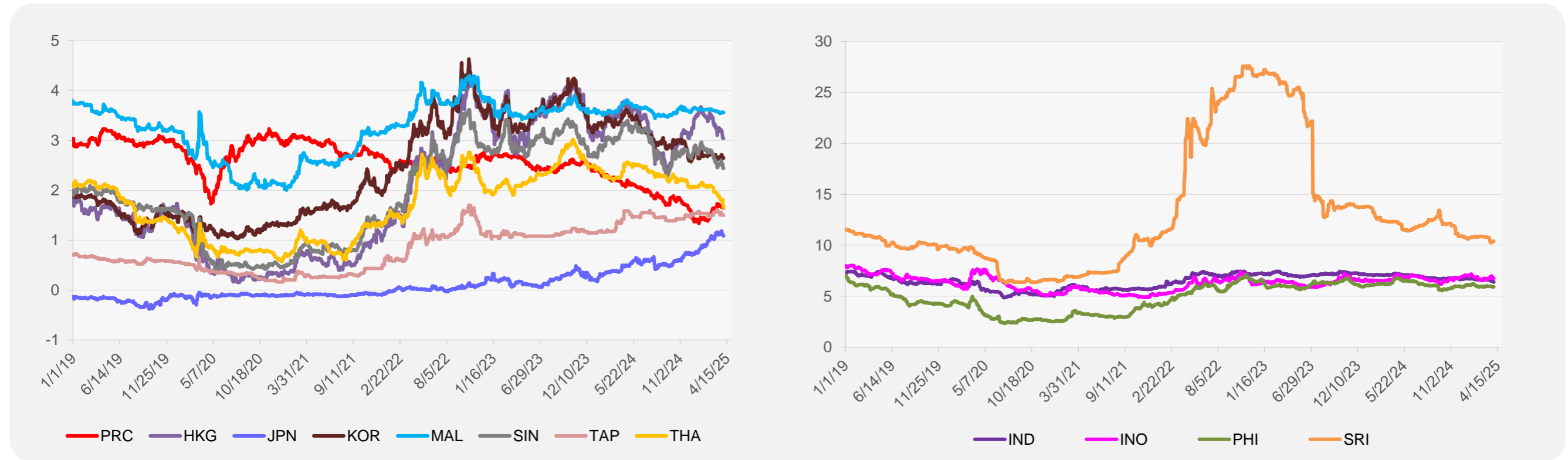
<sup>1</sup> Latest closing price from 2 April 2025.

<sup>2</sup> Singapore Exchange, Ribbed Smoked Sheet Rubber.

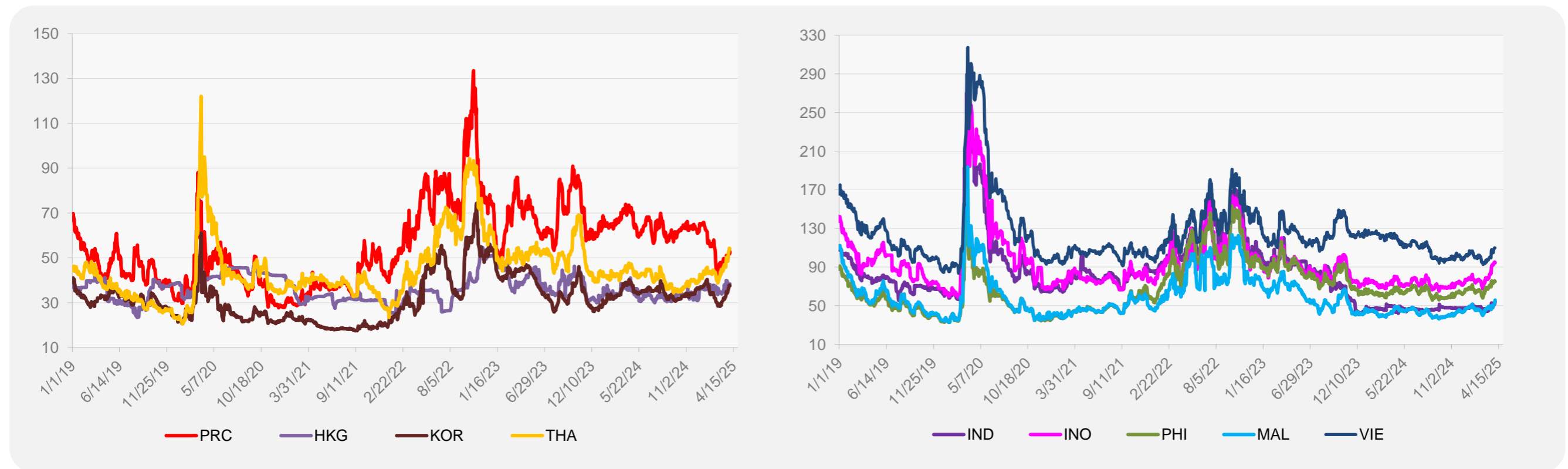


Source: ADB calculations using data from Bloomberg.

### 5-YEAR LOCAL CURRENCY GOVERNMENT BOND YIELDS (%)



### 5-YEAR CREDIT DEFAULT SWAP<sup>1</sup>



<sup>1</sup> In USD and based on sovereign bonds.  
Source: ADB calculations using data from Bloomberg.