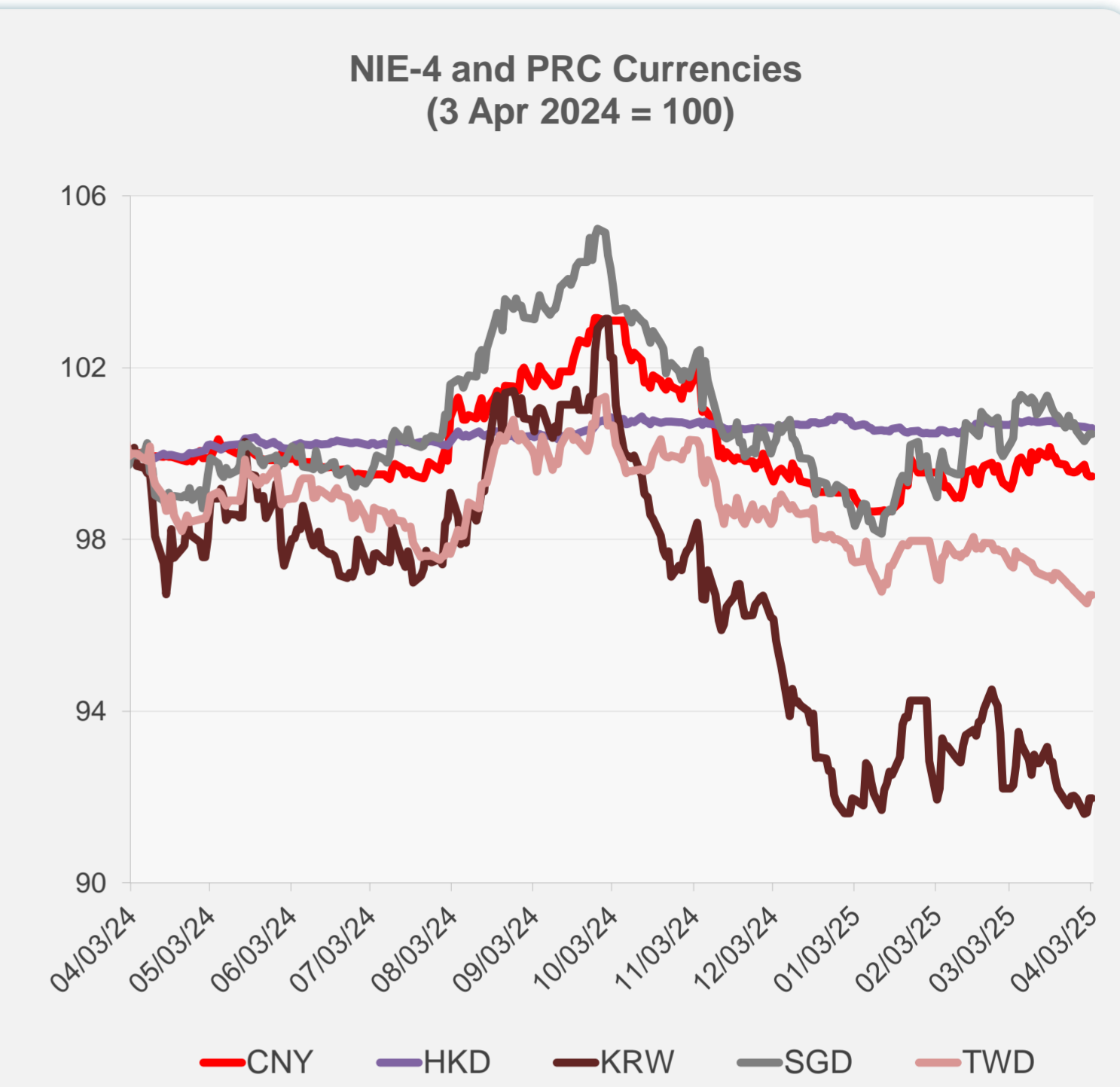
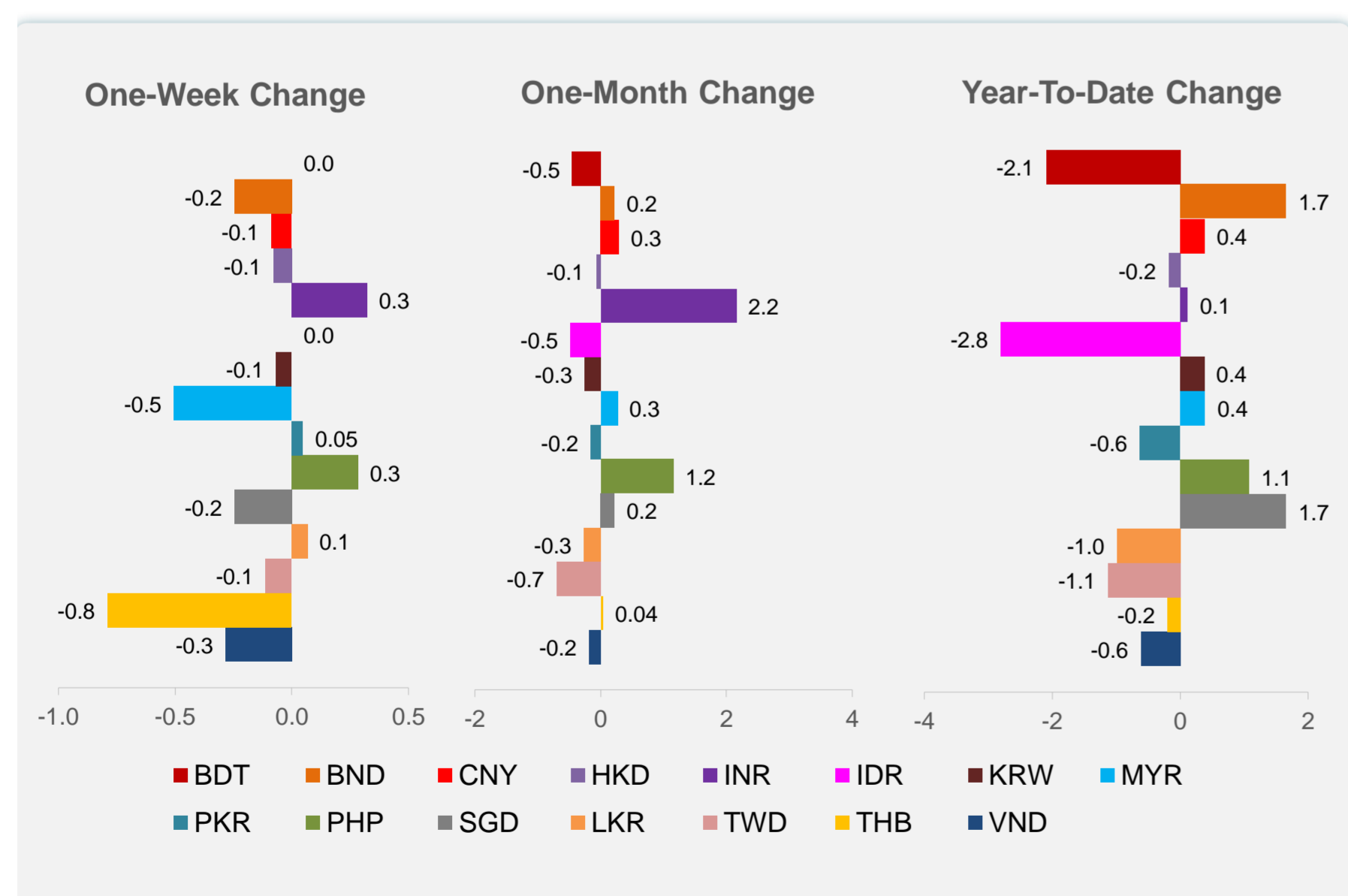
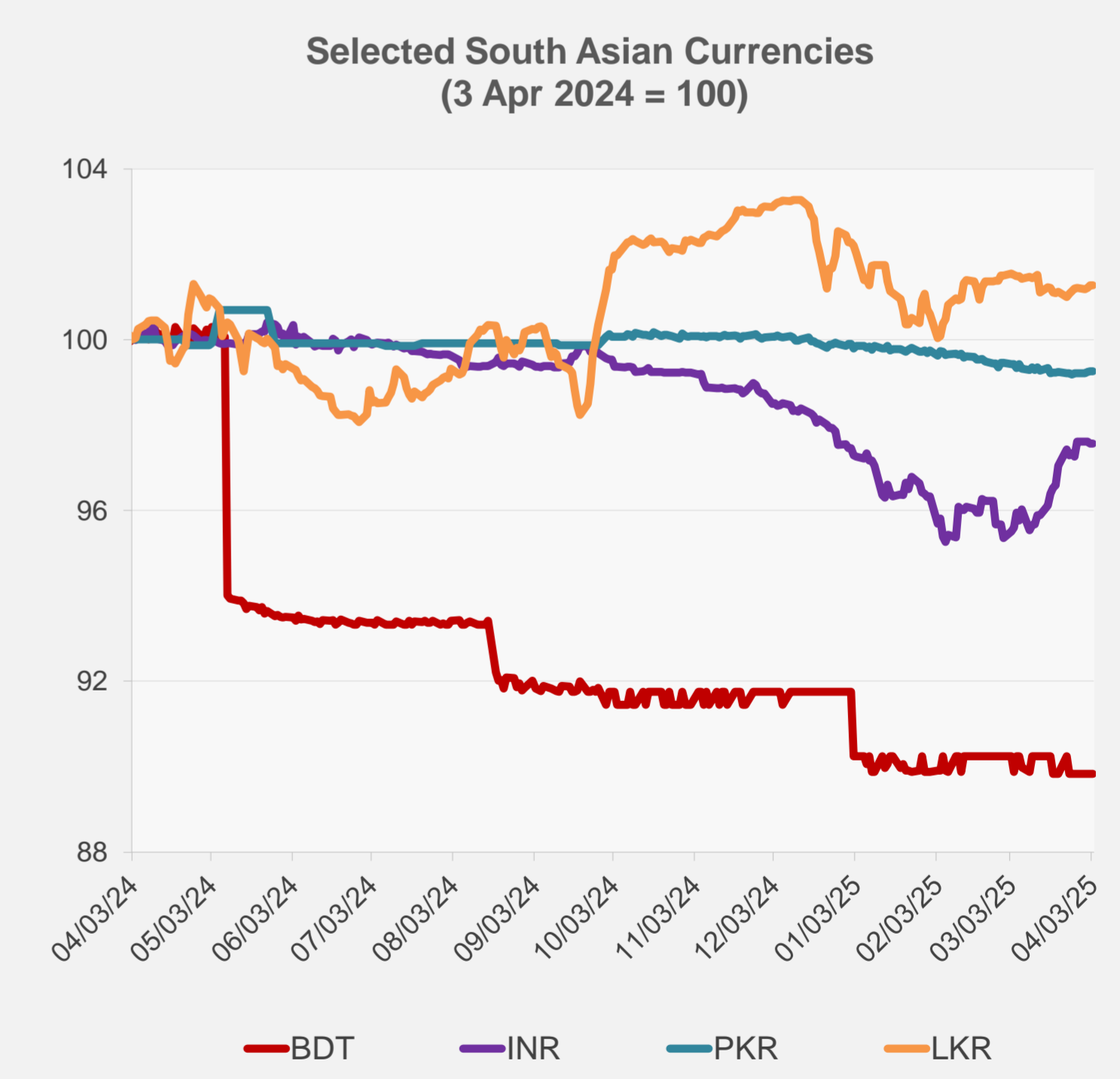
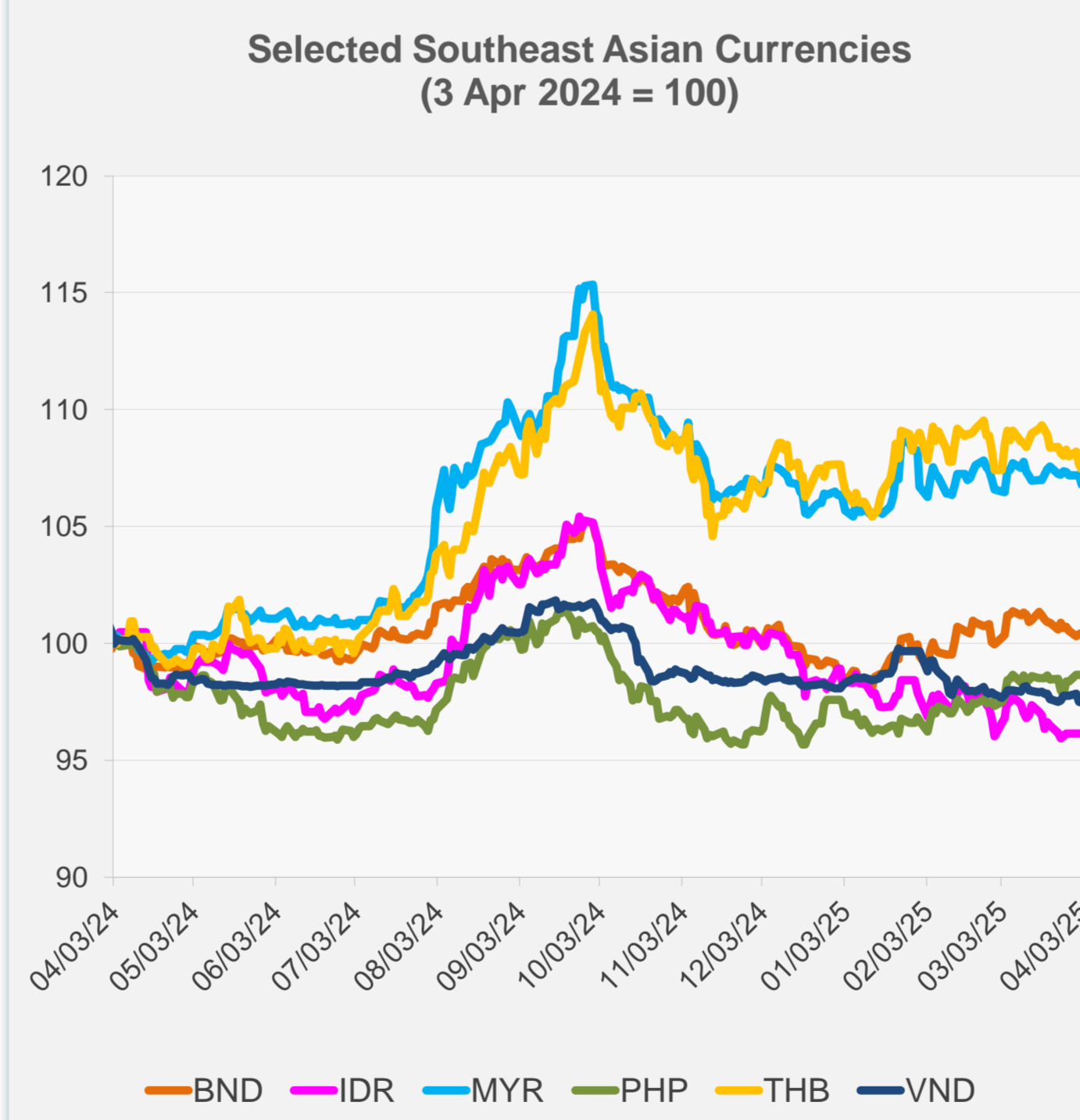


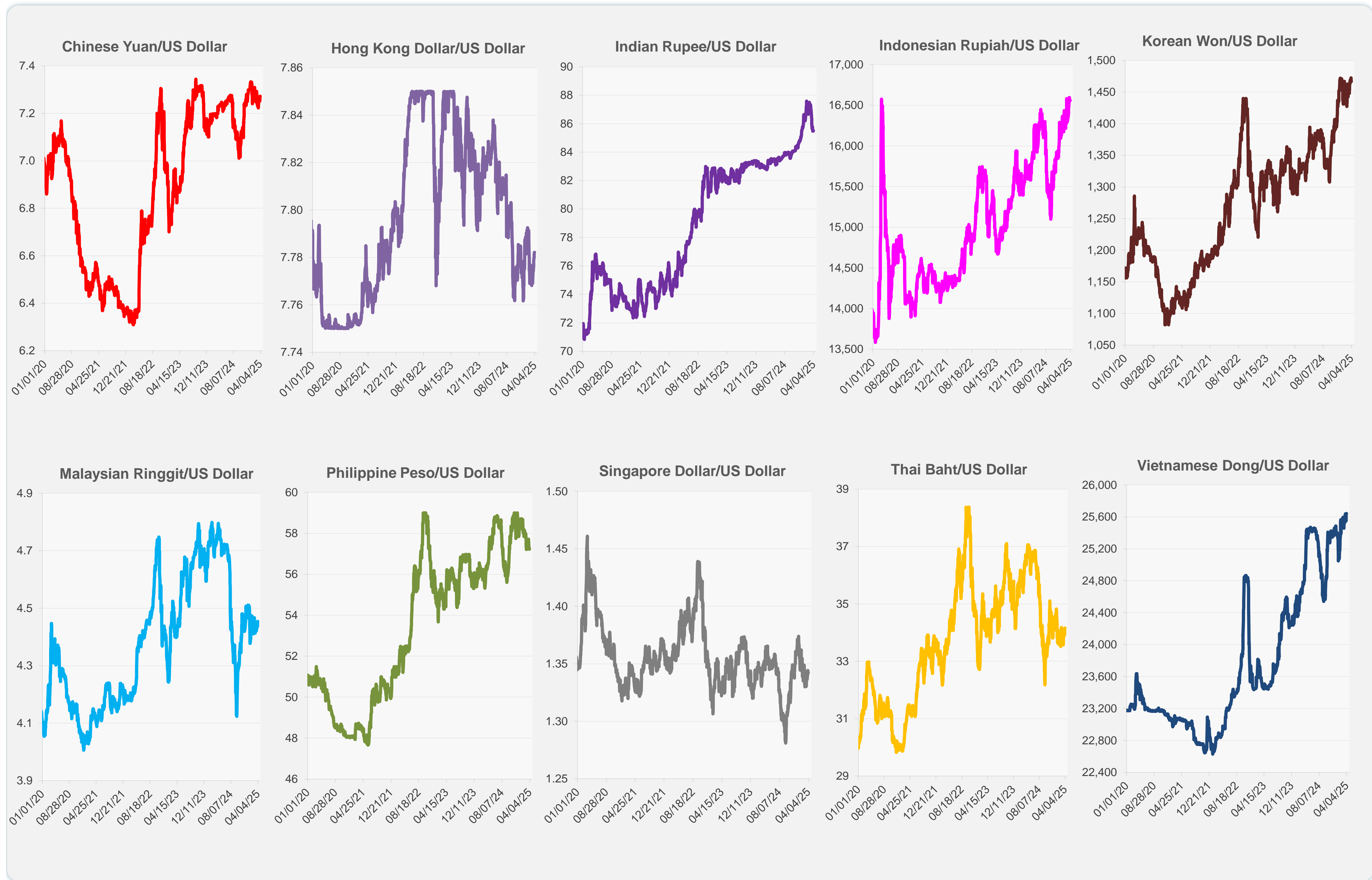
	Latest Closing	% change from Previous Day	% change from 01-Jan-25
Euro	0.92	0.00	4.84
Japanese yen (JPY)	149.73	0.00	4.97
Bangladeshi taka (BDT)	122.05	0.00	-2.09
Brunei dollar (BND)	1.34	0.00	1.66
Chinese yuan (CNY)	7.27	0.00	0.38
Hong Kong dollar (HKD)	7.78	0.00	-0.18
Indian rupee (INR)	85.51	0.00	0.12
Indonesian rupiah (IDR)	16,560.00	0.00	-2.81
Korean won (KRW)	1,466.65	0.00	0.38
Malaysian ringgit (MYR)	4.45	0.00	0.39
Pakistan rupee (PKR)	280.14	0.00	-0.63
Philippine peso (PHP)	57.23	0.00	1.08
Singapore dollar (SGD)	1.34	0.00	1.66
Sri Lanka rupee (LKR)	295.92	0.00	-0.99
Taipei,China NT dollar (TWD)	33.16	0.00	-1.12
Thai baht (THB)	34.16	0.00	-0.20
Vietnamese dong (VND)	25,643.00	0.00	-0.62



NIE = Newly Industrialized Economies



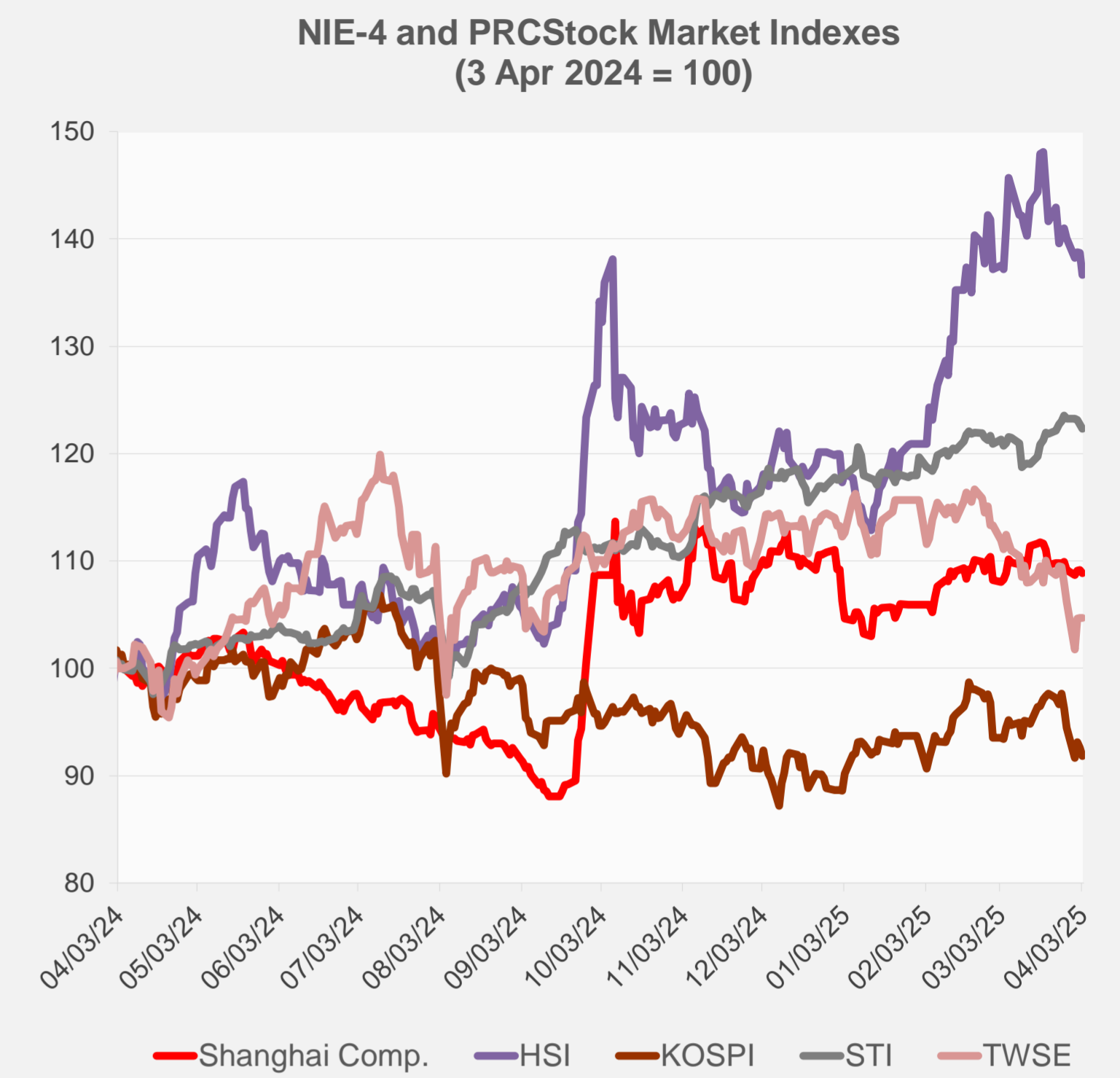
Note: Negative/Decreasing values indicate depreciation of local currency, and positive/increasing values indicate appreciation.
Source: ADB calculations using data from Haver Analytics.



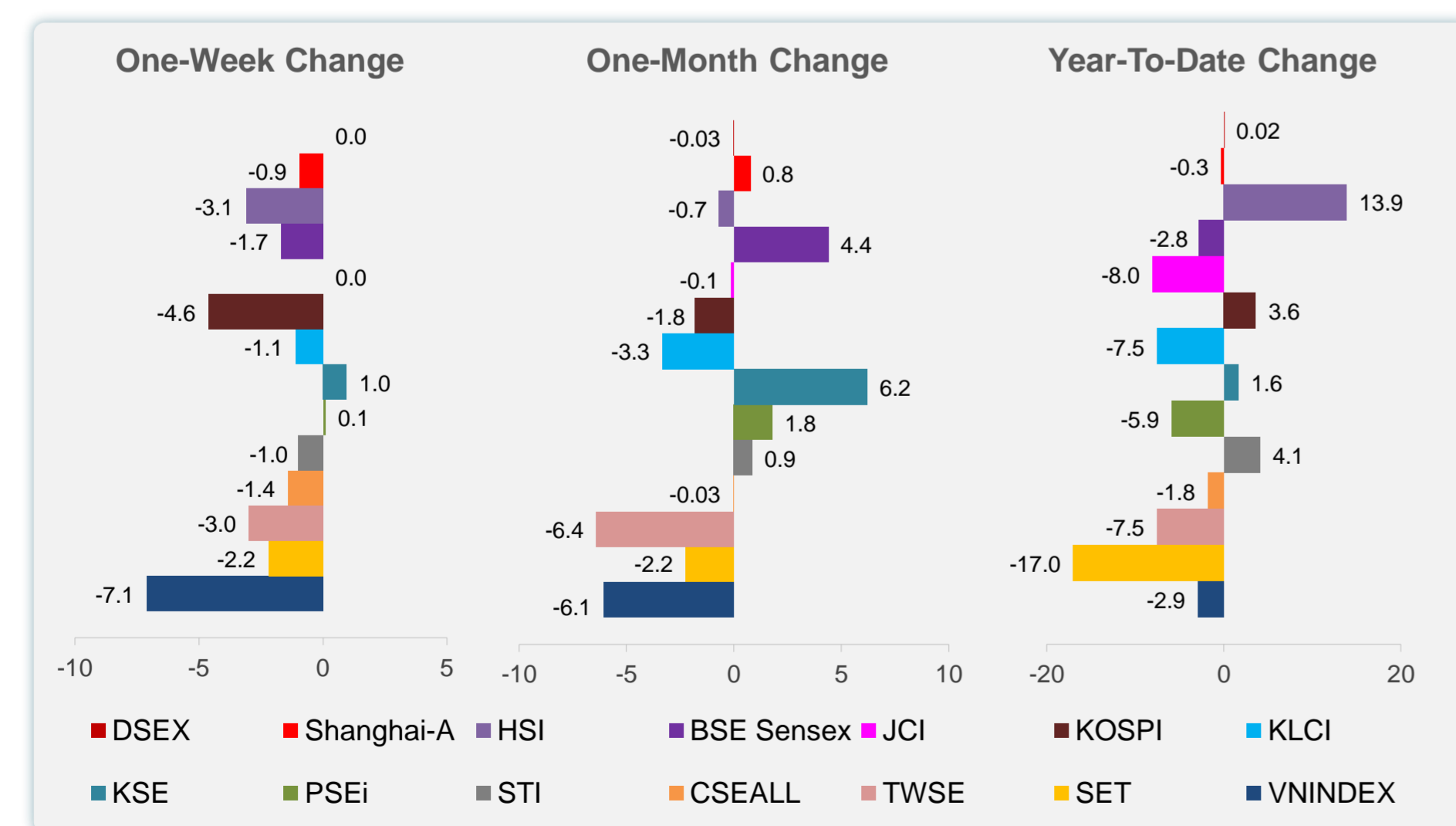
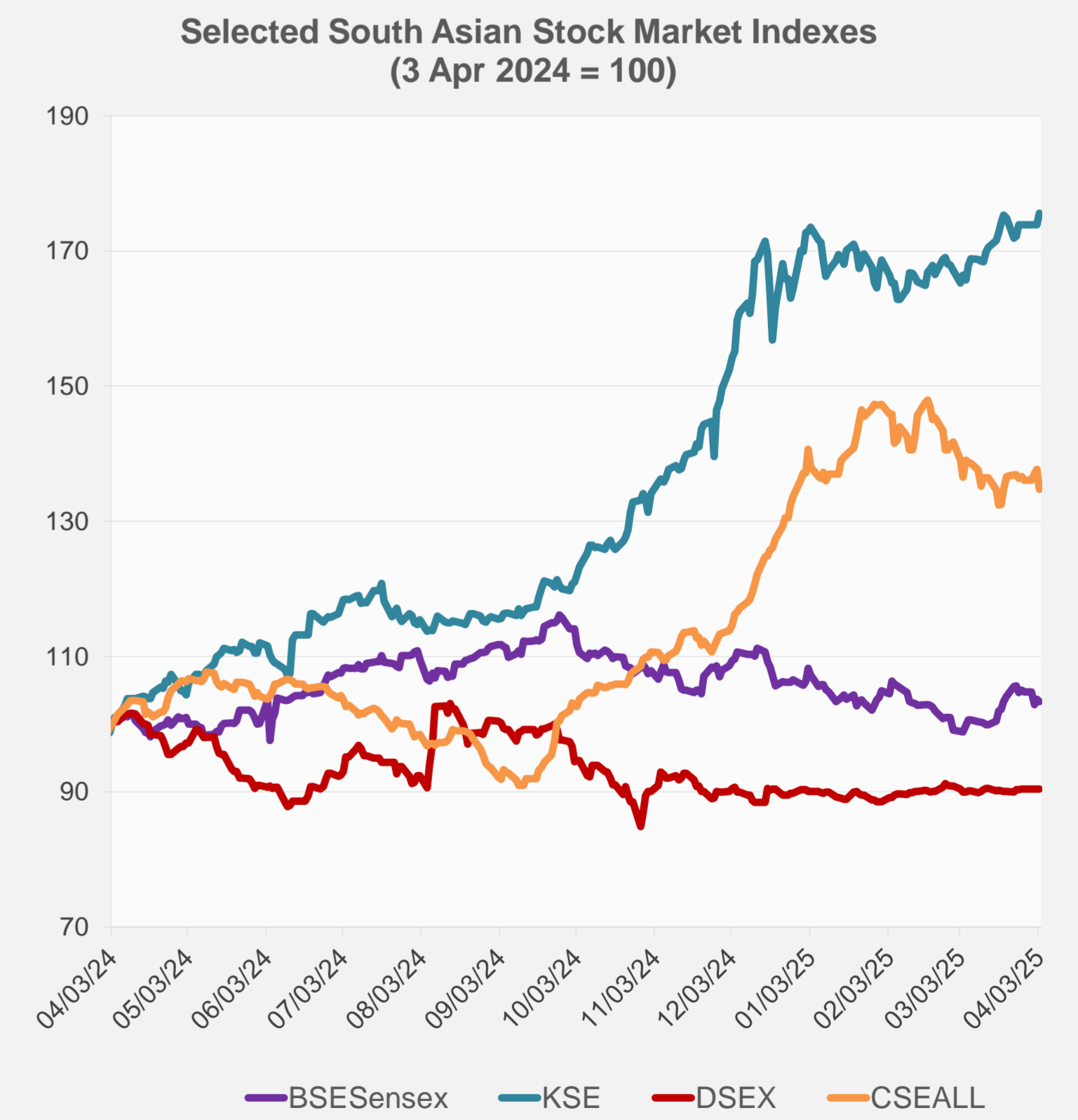
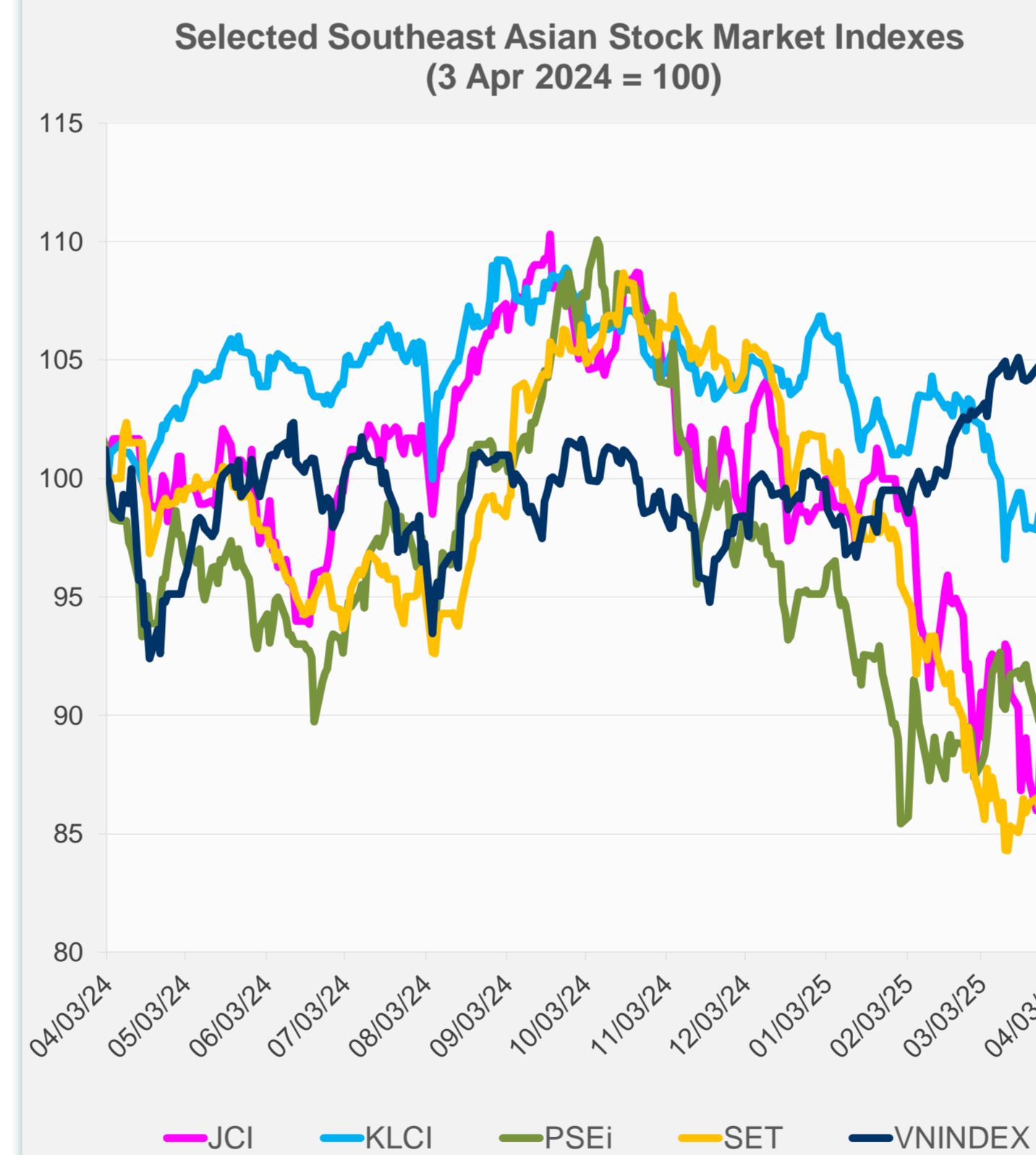
Source: Haver Analytics.

Daily Market Watch
STOCK INDEXES

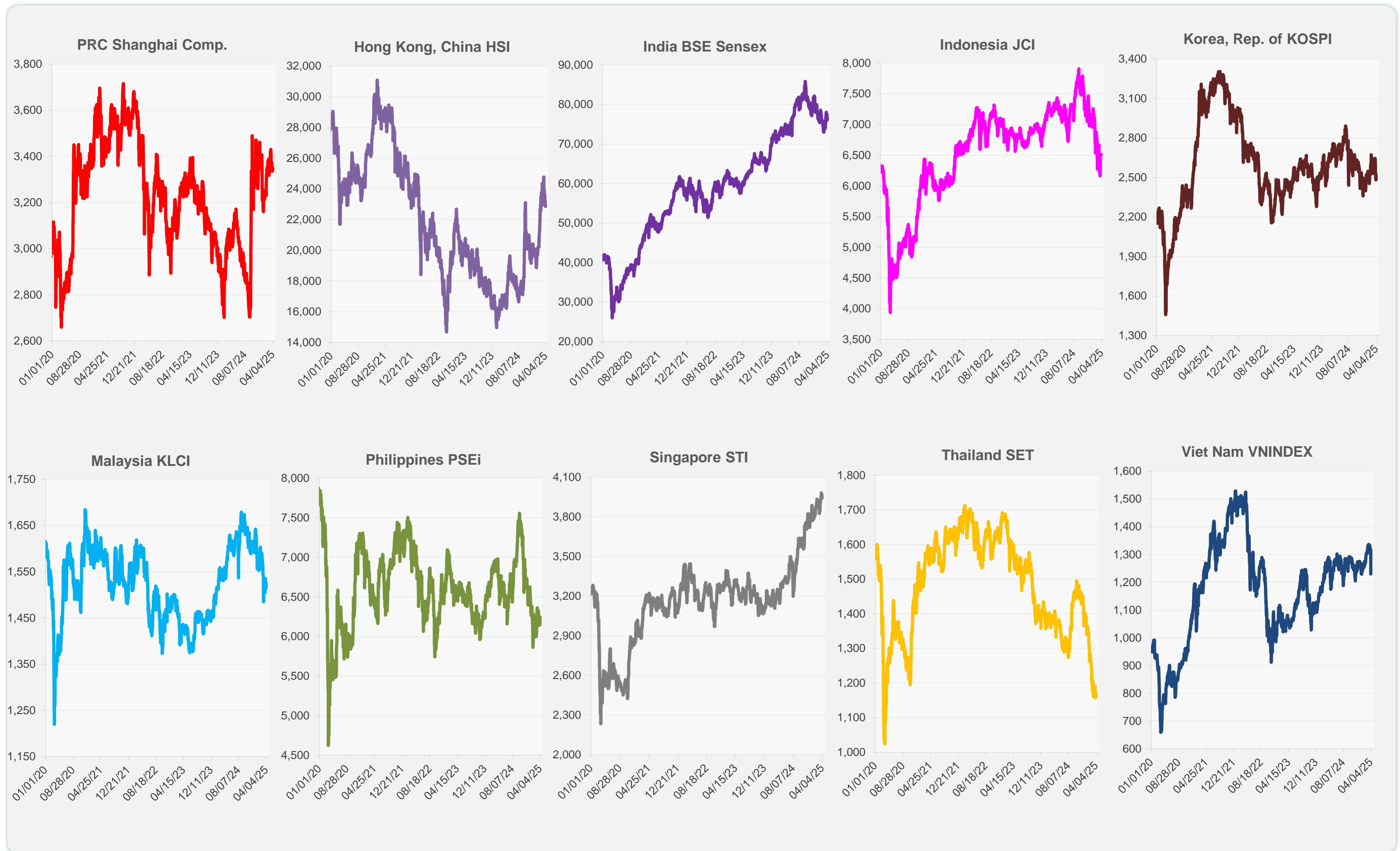
	Latest Closing	% change from Previous Day	% change from 01-Jan-25
US Dow Jones Ind Avg	40,545.93	-3.98	-4.70
US NASDAQ	16,550.61	-5.97	-14.29
US S&P 500	5,396.52	-4.84	-8.25
UK FTSE 100	8,474.74	-1.55	3.69
EURO STOXX 50	5,113.28	-3.59	4.44
Japan NIKKEI 225	34,735.93	-2.77	-12.93
Bangladesh DSEX	5,219.16	0.00	0.02
PRC Shanghai Comp.	3,342.01	-0.24	-0.29
Hong Kong, China HSI	22,849.81	-1.52	13.91
India BSE Sensex	76,295.36	-0.42	-2.82
Indonesia JCI	6,510.62	0.00	-8.04
Korea, Rep. of KOSPI	2,486.70	-0.76	3.63
Malaysia KLCI	1,518.91	-0.50	-7.51
Pakistan KSE 100	118,938.11	0.96	1.65
Philippines PSEi	6,145.73	-1.63	-5.87
Singapore STI	3,942.23	-0.30	4.08
Sri Lanka CSEALL	15,657.60	-2.19	-1.80
Taipei, China TWSE	21,298.22	0.00	-7.54
Thailand SET	1,161.81	-0.93	-17.03
Viet Nam VNINDEX	1,229.84	-6.68	-2.92



NIE = Newly Industrialized Economies



Sources: ADB calculations using data from CEIC Data Company and Haver Analytics.



Sources: CEIC Data Company and Haver Analytics.

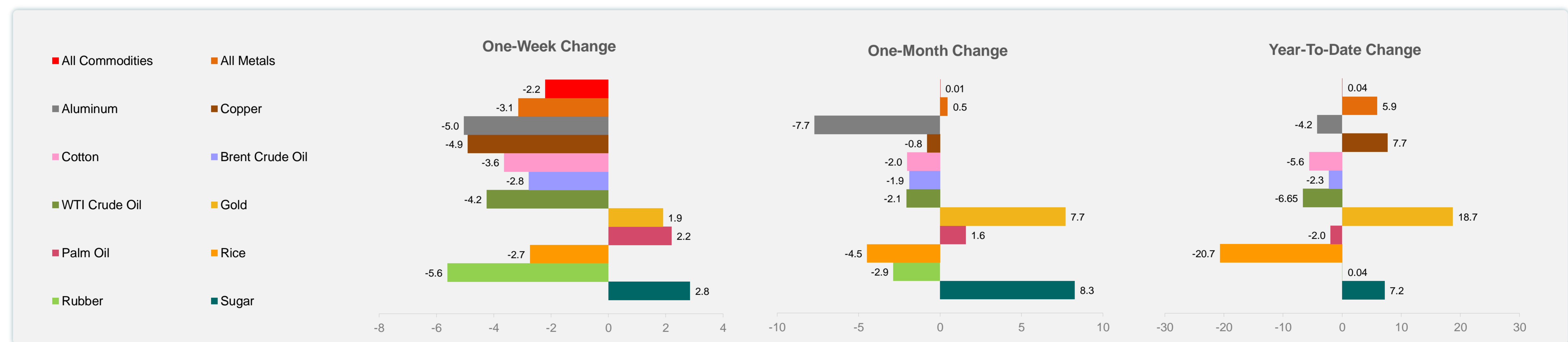
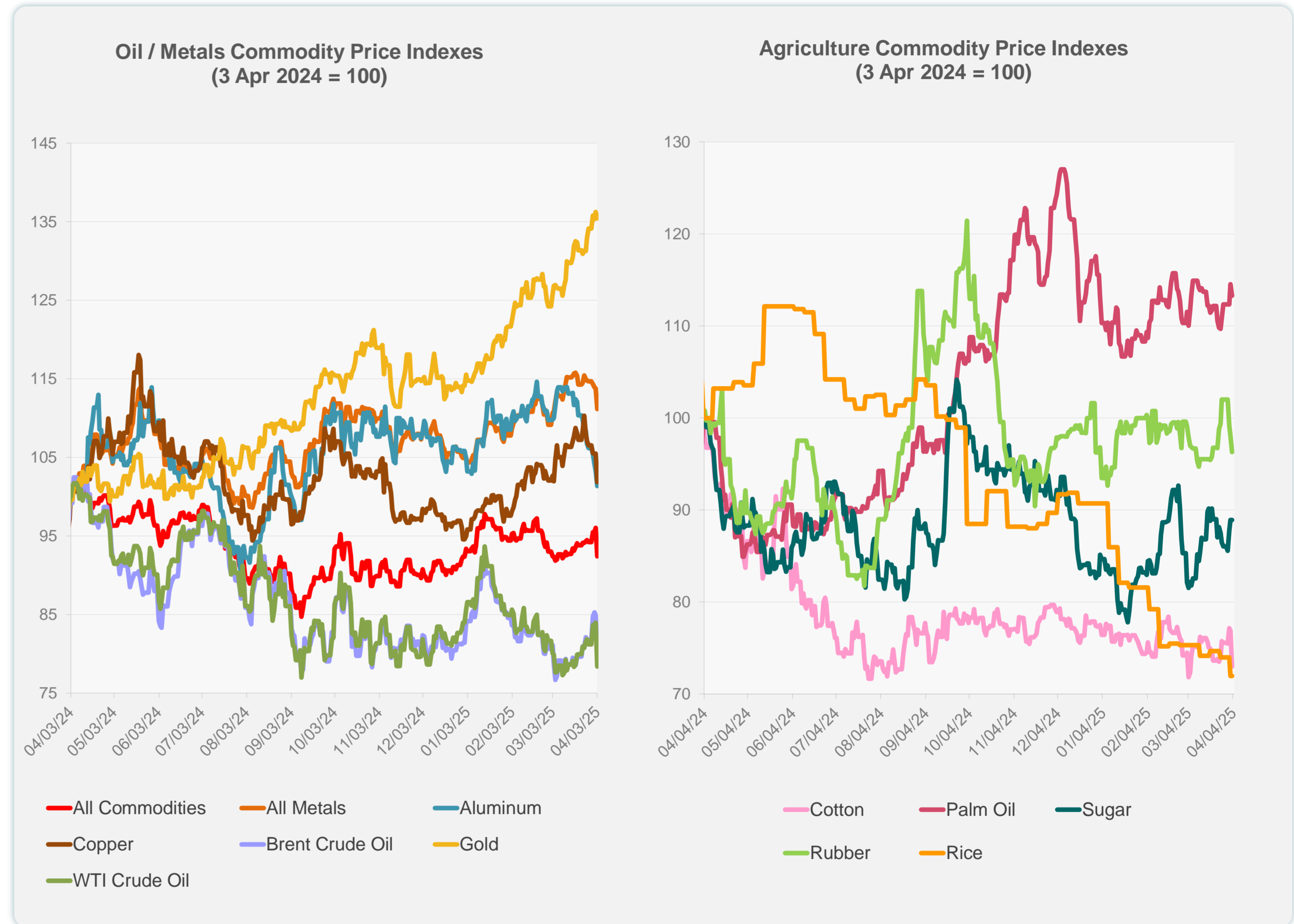
Daily Market Watch
COMMODITY PRICES

4 April 2025, 9:00 AM Manila

	Unit	Latest Closing	% change from Previous Day	% change from 01-Jan-25
S&P All Commodities	US\$	549.87	-3.79	0.04
S&P All Metals	US\$	325.66	-2.28	5.95
Aluminum	US\$/metric ton	2,420.48	-1.83	-4.21
Copper	US\$/metric ton	9,319.27	-3.46	7.70
Cotton	US cents/lb	62.22	-5.08	-5.58
Brent Crude Oil	US\$/barrel	72.43	-6.34	-2.27
WTI Crude Oil	US\$/barrel	66.95	-6.64	-6.65
Gold	US\$/troy oz	3,115.34	-0.60	18.70
Palm Oil	US\$/metric tonne	1,078.57	-1.11	-1.96
Rice ¹	US\$/metric ton	426.00	0.00	-20.67
Rubber ²	US\$/kg	236.90	-1.78	0.04
Sugar	US cents/lb	19.51	0.00	7.20

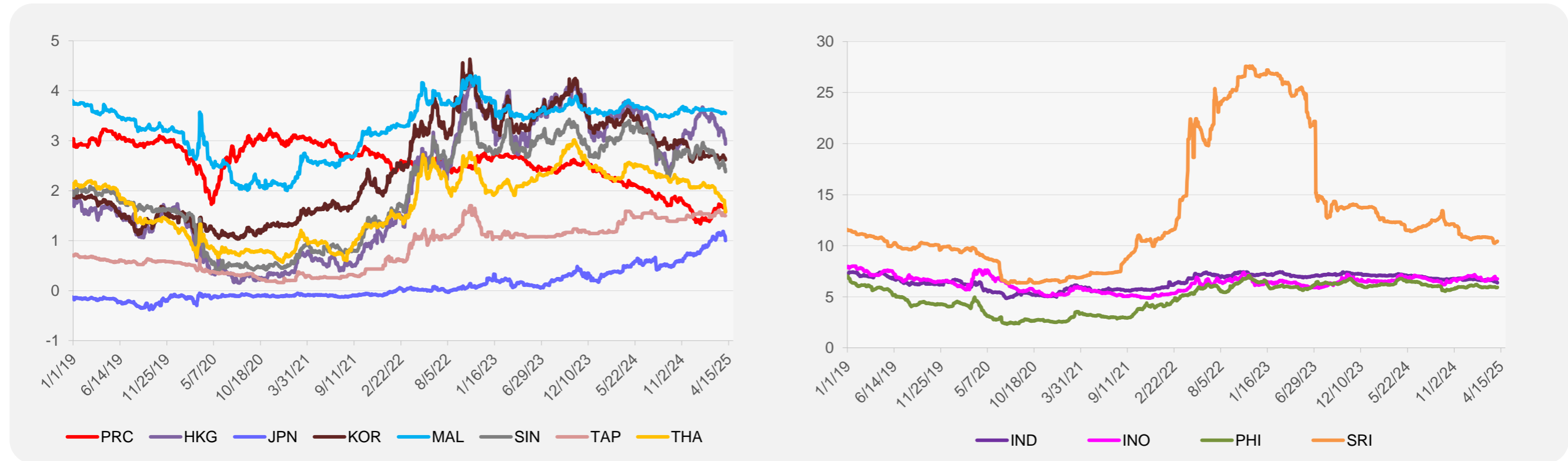
¹ Latest closing price from 2 April 2025.

² Singapore Exchange, Ribbed Smoked Sheet Rubber.

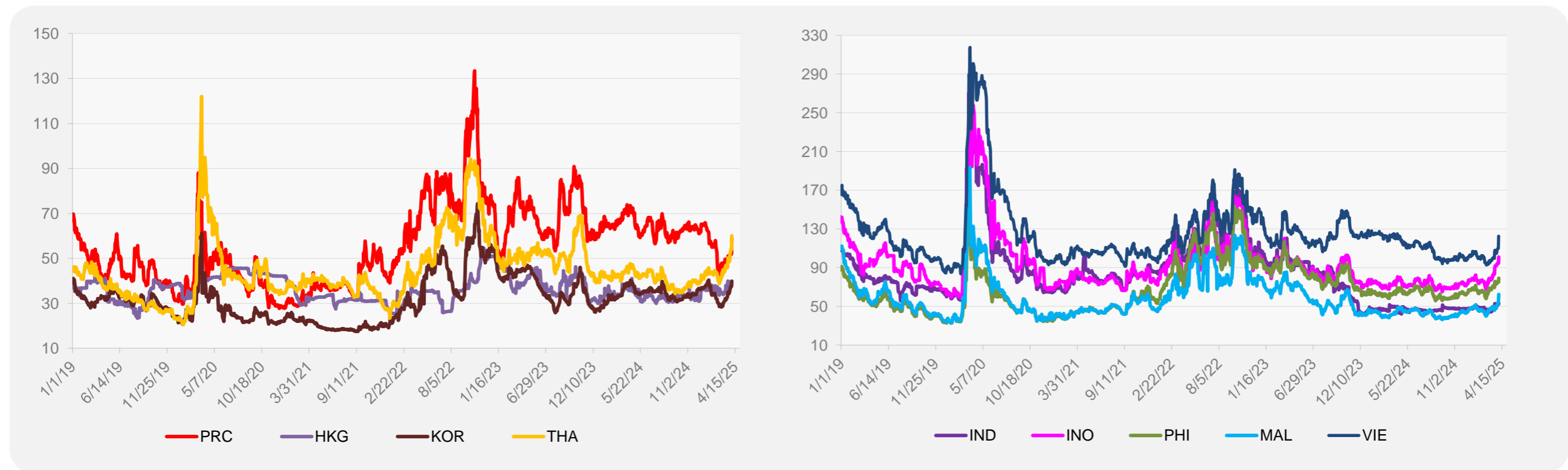


Source: ADB calculations using data from Bloomberg.

5-YEAR LOCAL CURRENCY GOVERNMENT BOND YIELDS (%)



5-YEAR CREDIT DEFAULT SWAP¹



¹ In USD and based on sovereign bonds.
Source: ADB calculations using data from Bloomberg.