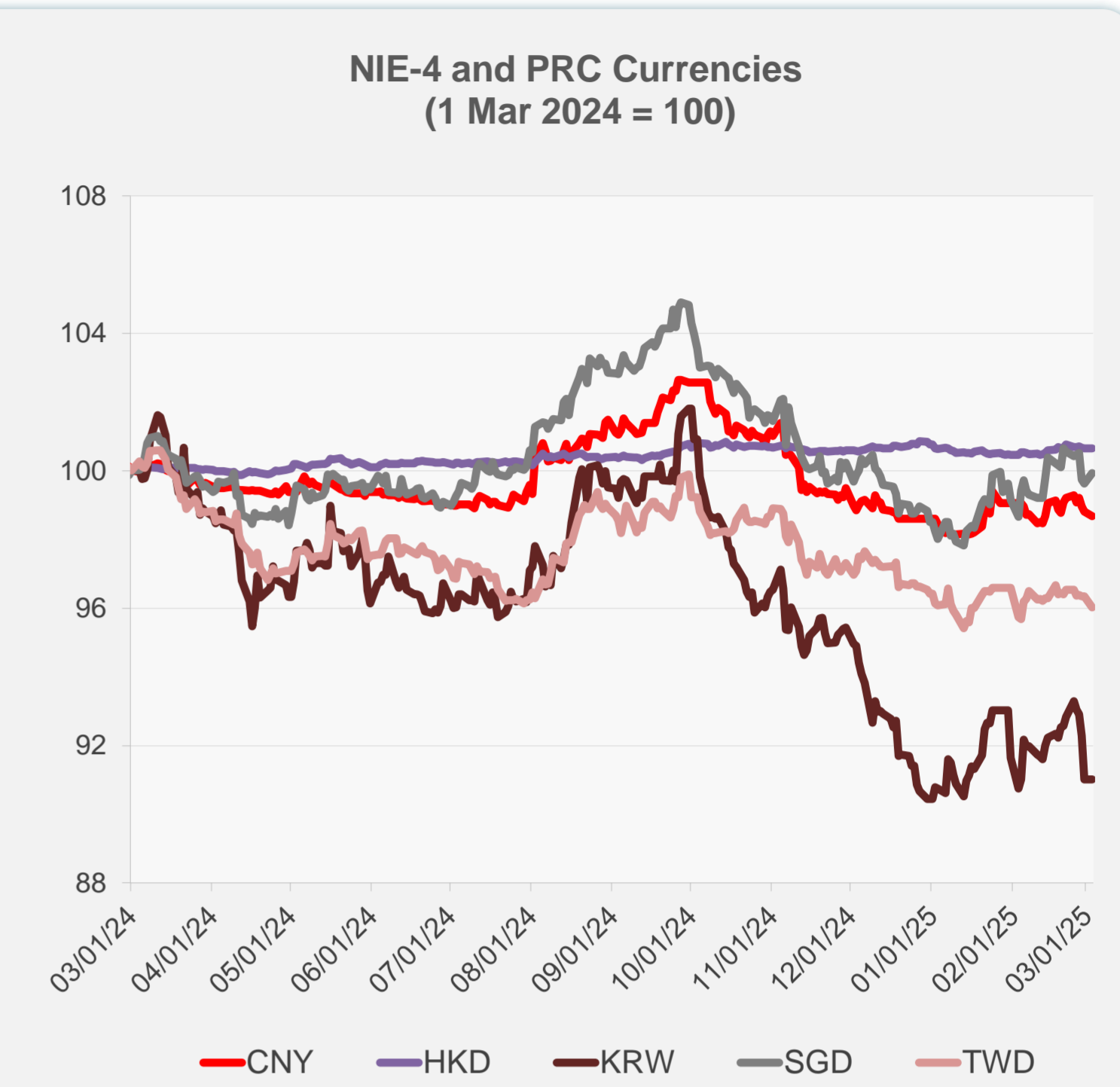
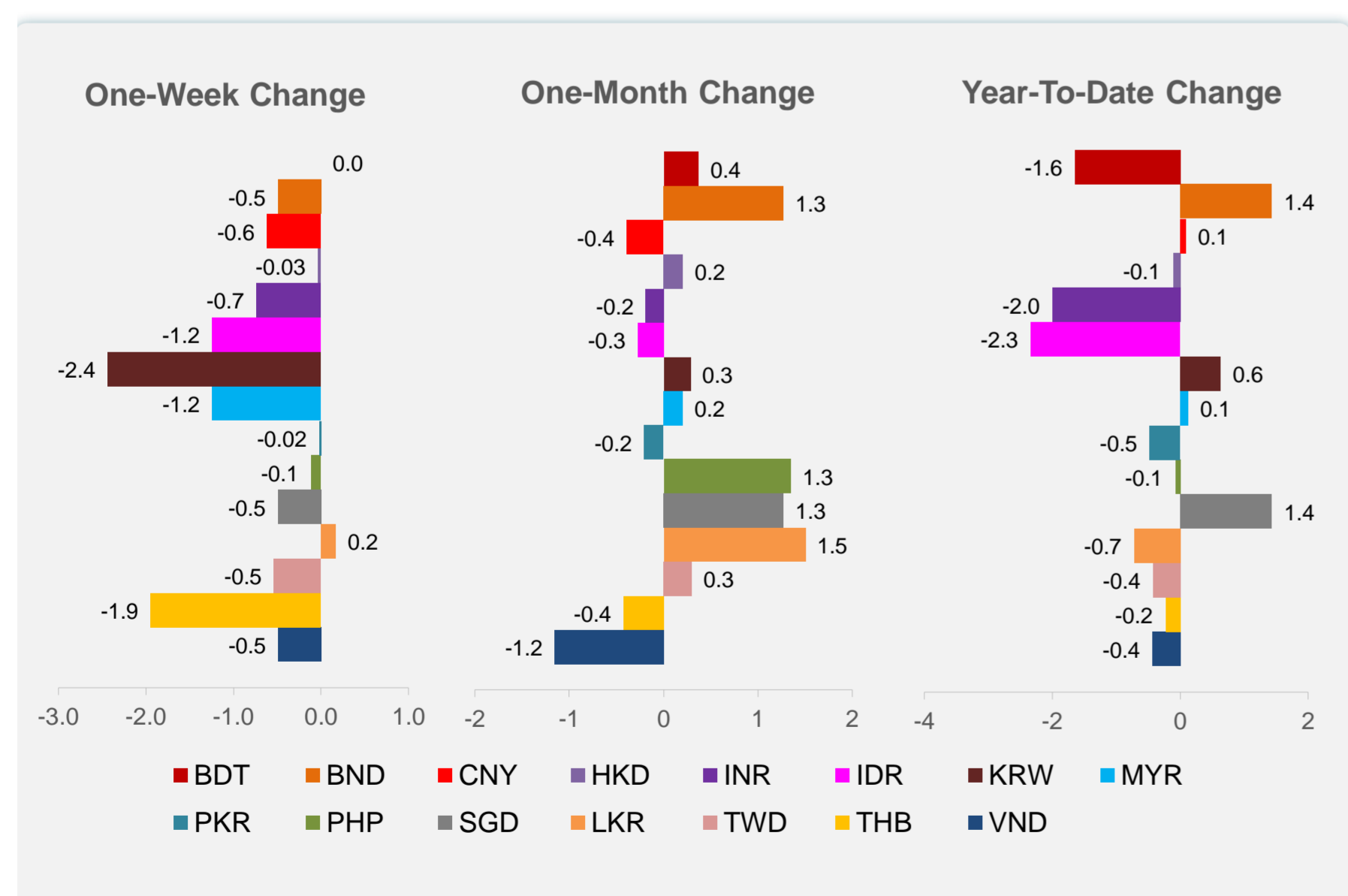
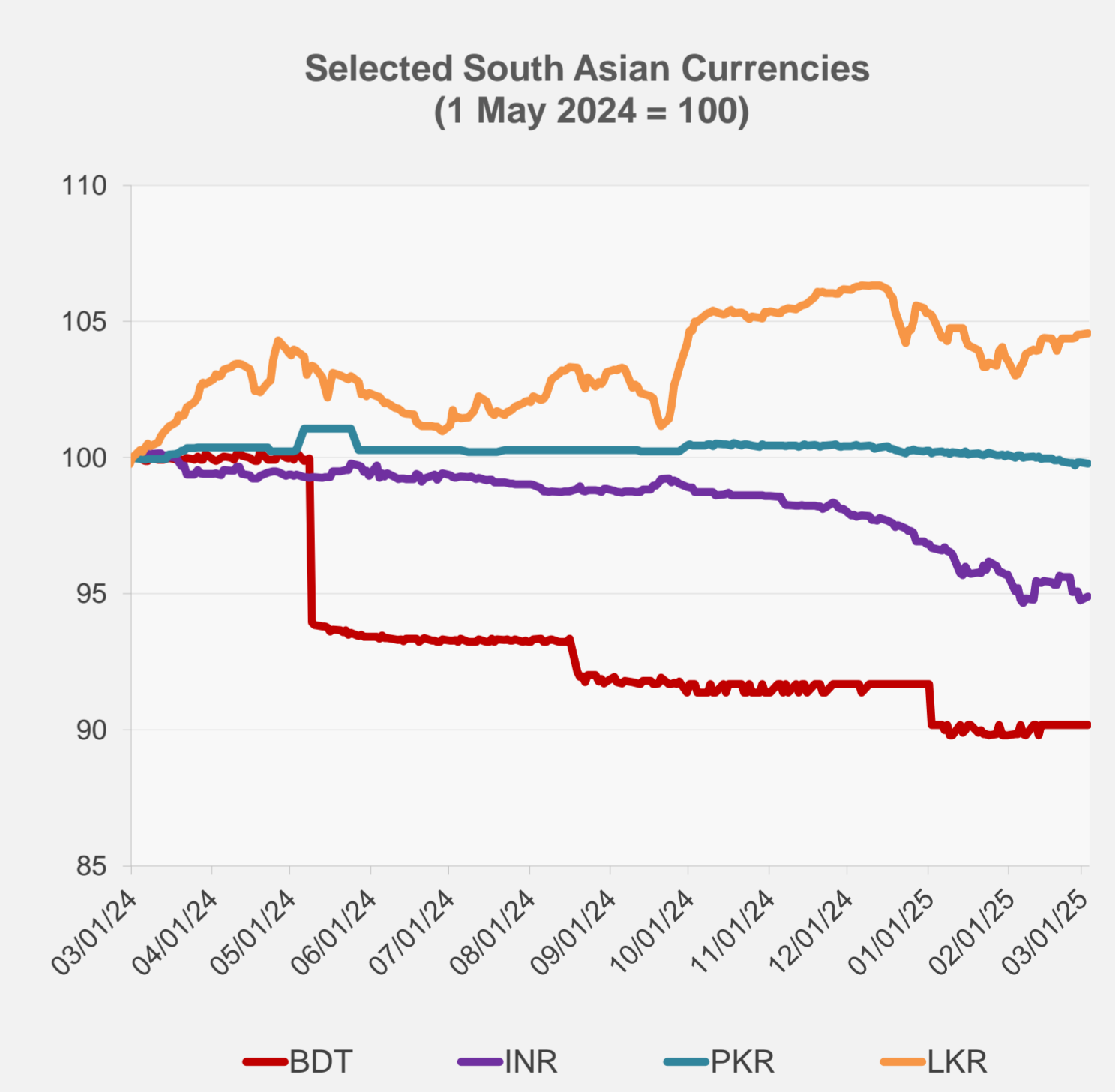
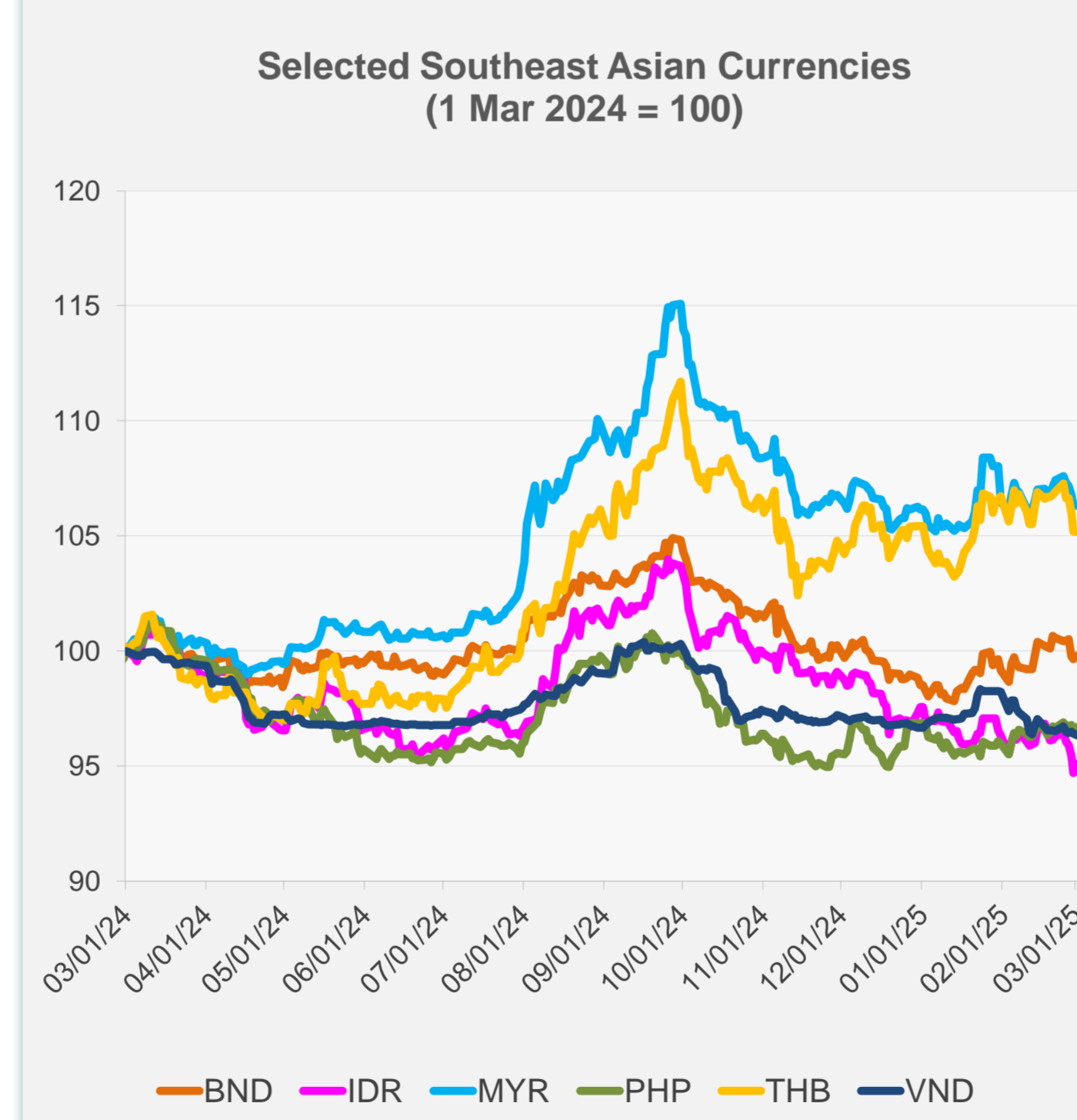


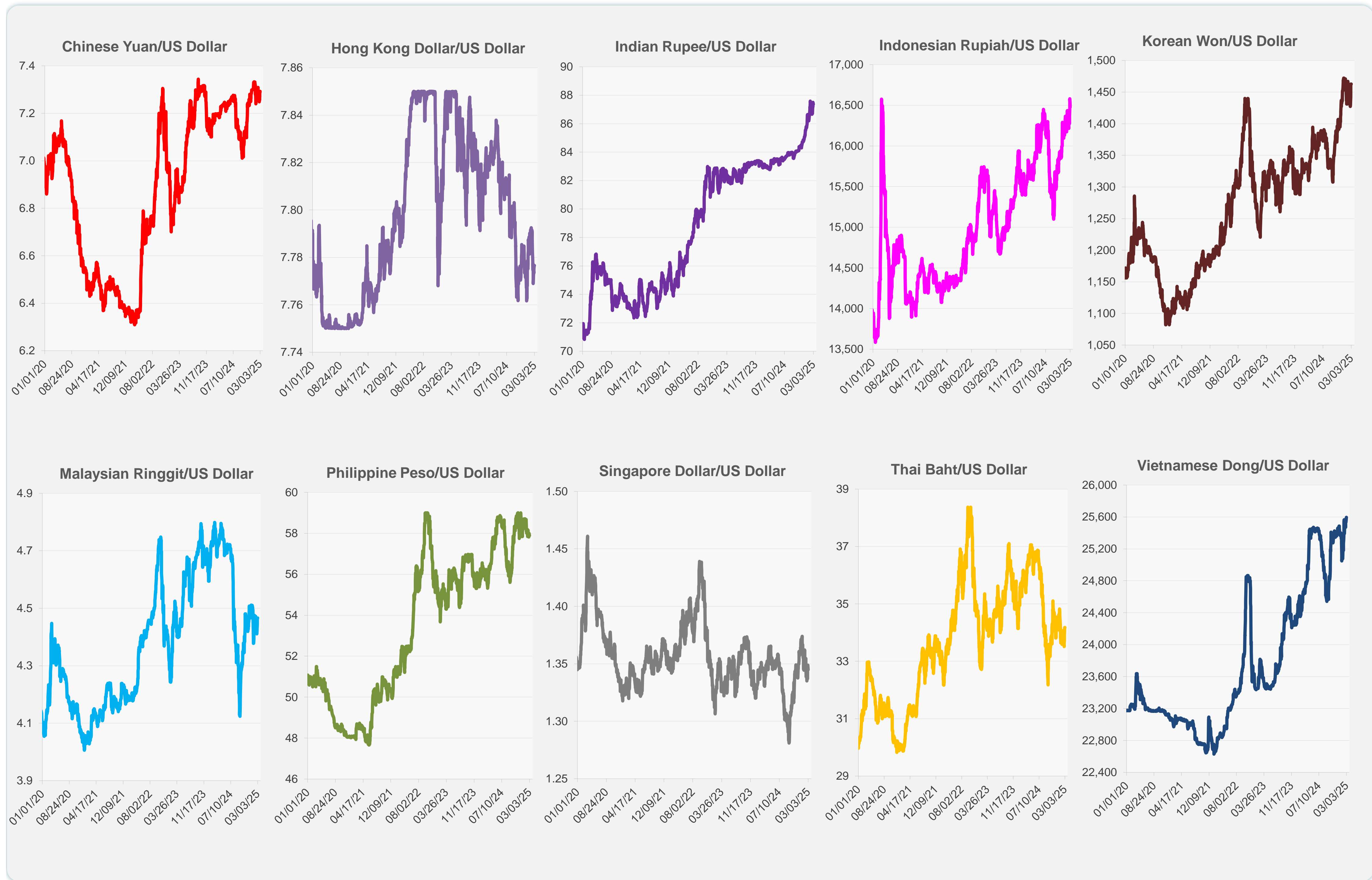
	Latest Closing	% change from Previous Day	% change from 01-Jan-25
Euro	0.95	0.82	1.26
Japanese yen (JPY)	150.26	0.29	4.60
Bangladeshi taka (BDT)	121.50	0.00	-1.65
Brunei dollar (BND)	1.34	0.29	1.44
Chinese yuan (CNY)	7.29	-0.13	0.09
Hong Kong dollar (HKD)	7.78	0.00	-0.11
Indian rupee (INR)	87.36	0.17	-2.00
Indonesian rupiah (IDR)	16,480.00	0.61	-2.34
Korean won (KRW)	1,462.90	0.00	0.63
Malaysian ringgit (MYR)	4.47	-0.08	0.12
Pakistan rupee (PKR)	279.70	-0.04	-0.47
Philippine peso (PHP)	57.89	0.18	-0.08
Singapore dollar (SGD)	1.34	0.29	1.44
Sri Lanka rupee (LKR)	295.12	0.04	-0.72
Taipei,China NT dollar (TWD)	32.92	-0.34	-0.43
Thai baht (THB)	34.18	-0.01	-0.23
Vietnamese dong (VND)	25,595.00	-0.16	-0.43



NIE = Newly Industrialized Economies



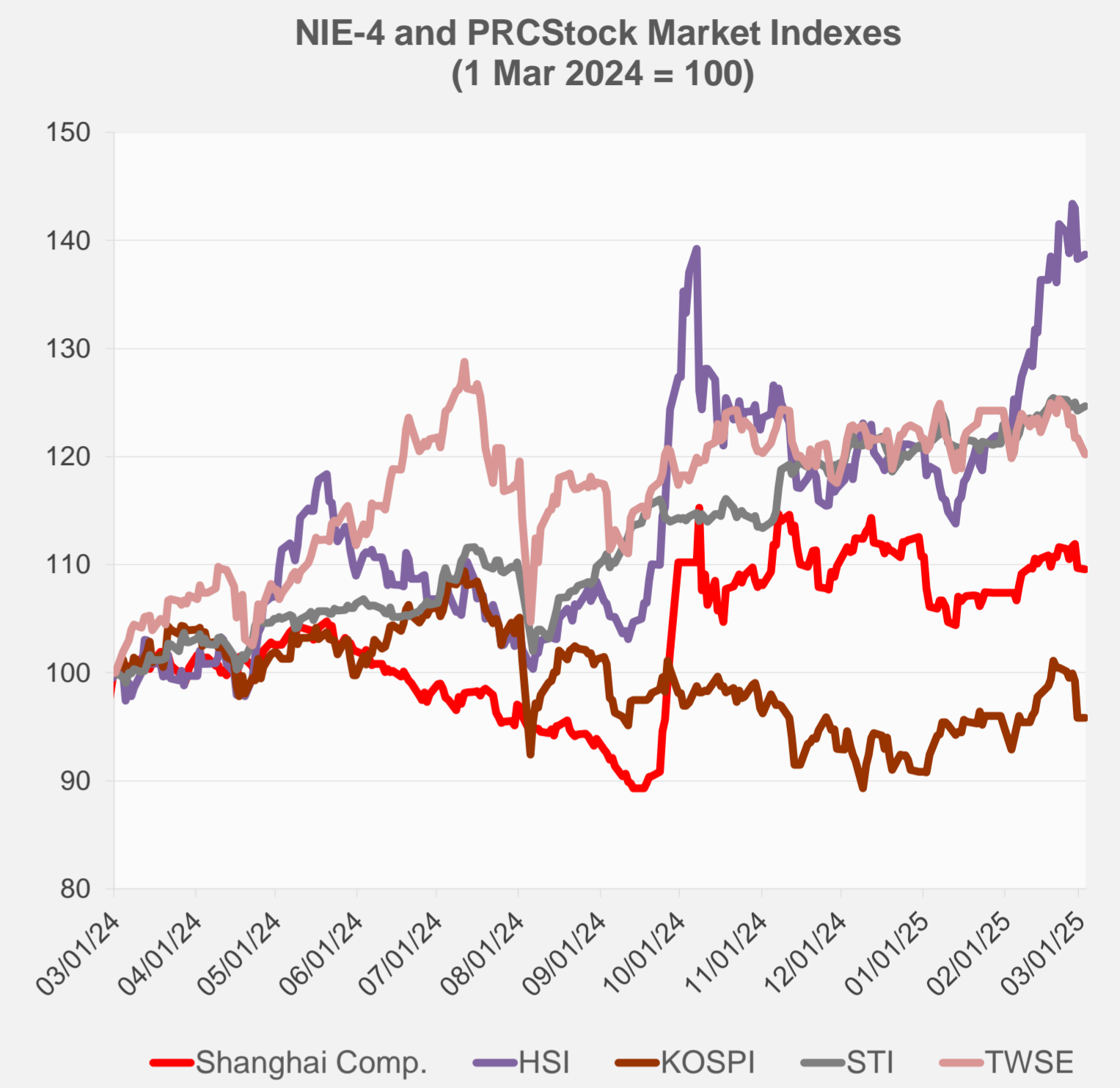
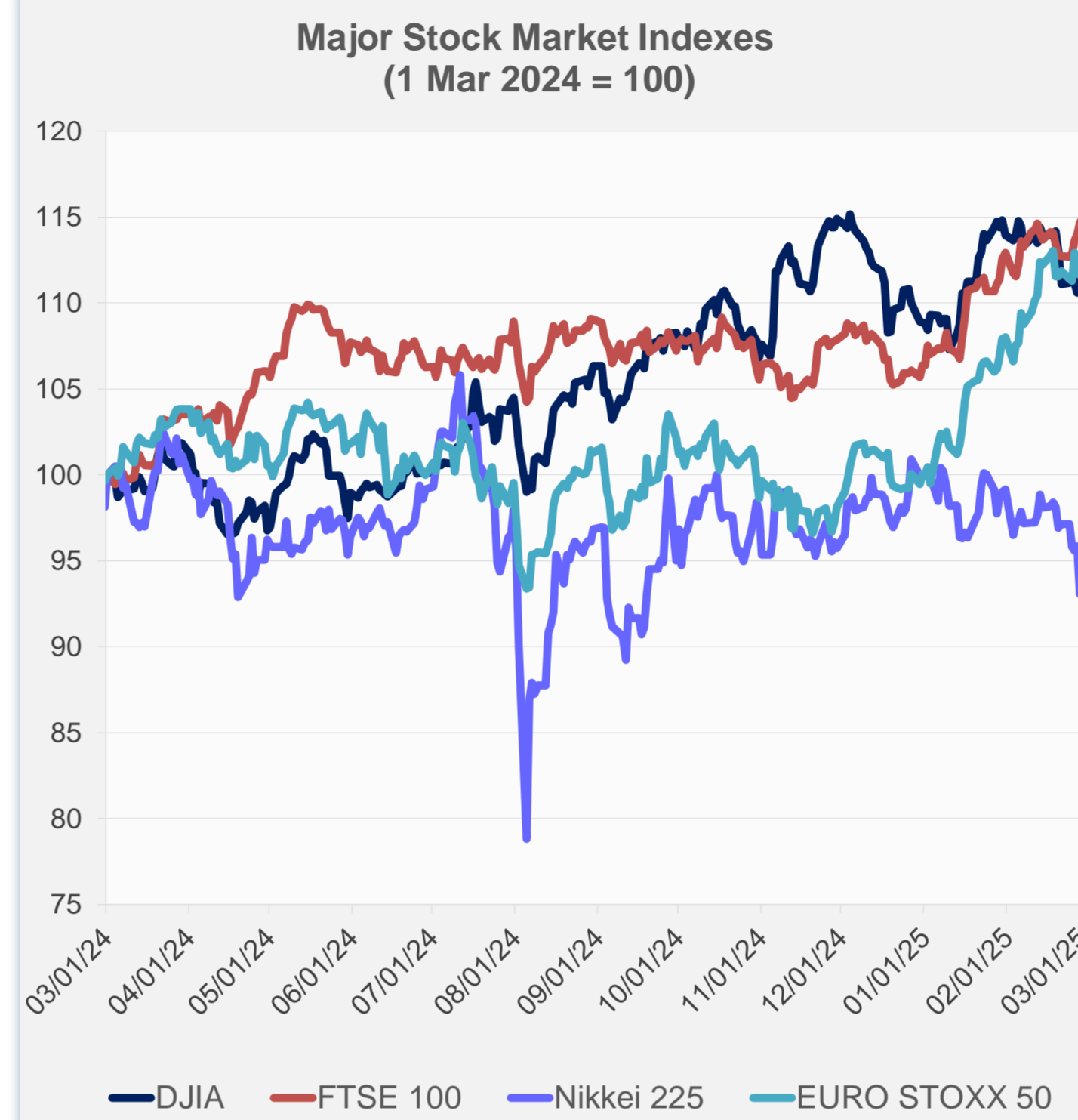
Note: Negative/Decreasing values indicate depreciation of local currency, and positive/increasing values indicate appreciation.
Source: ADB calculations using data from Haver Analytics.



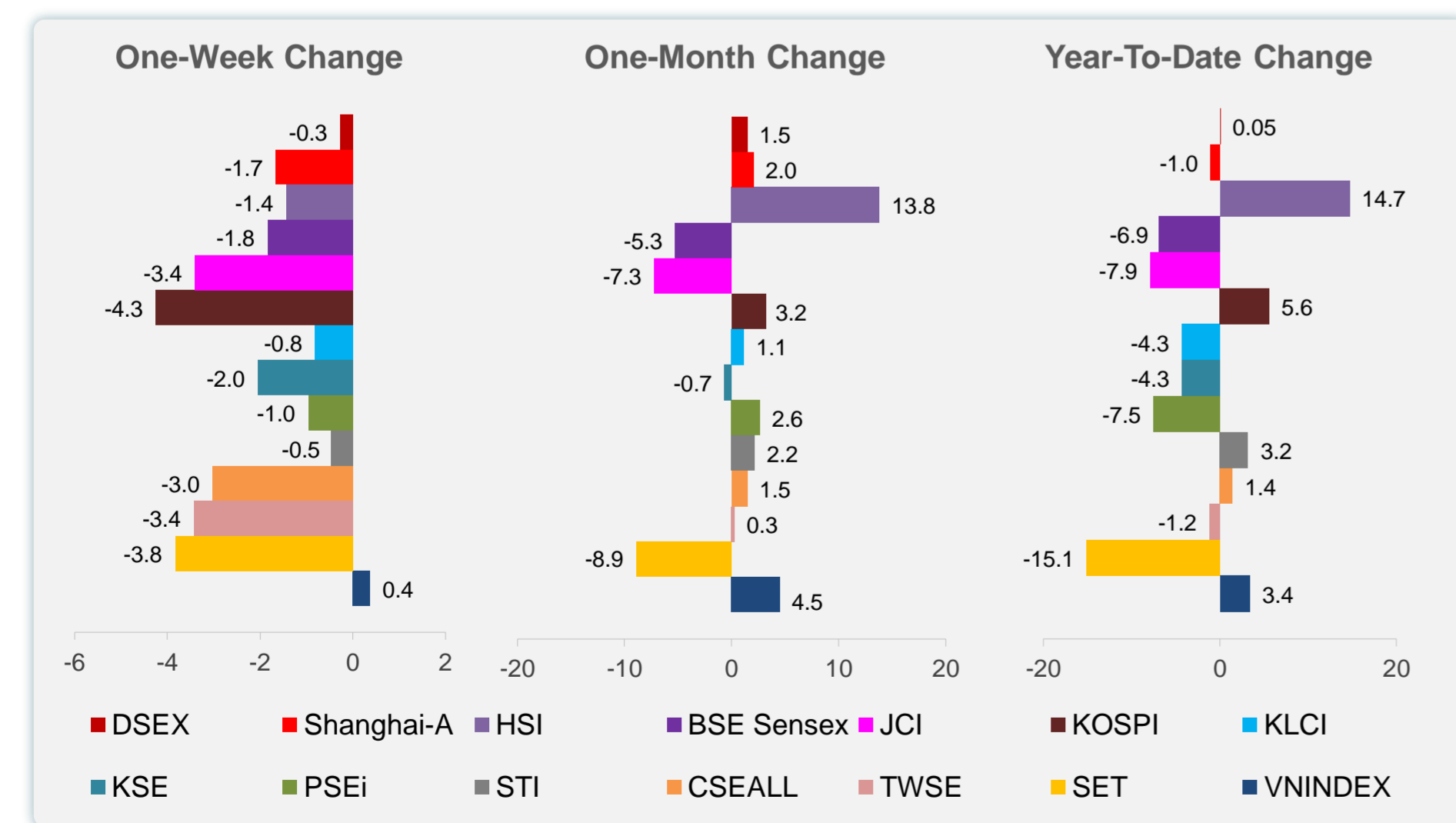
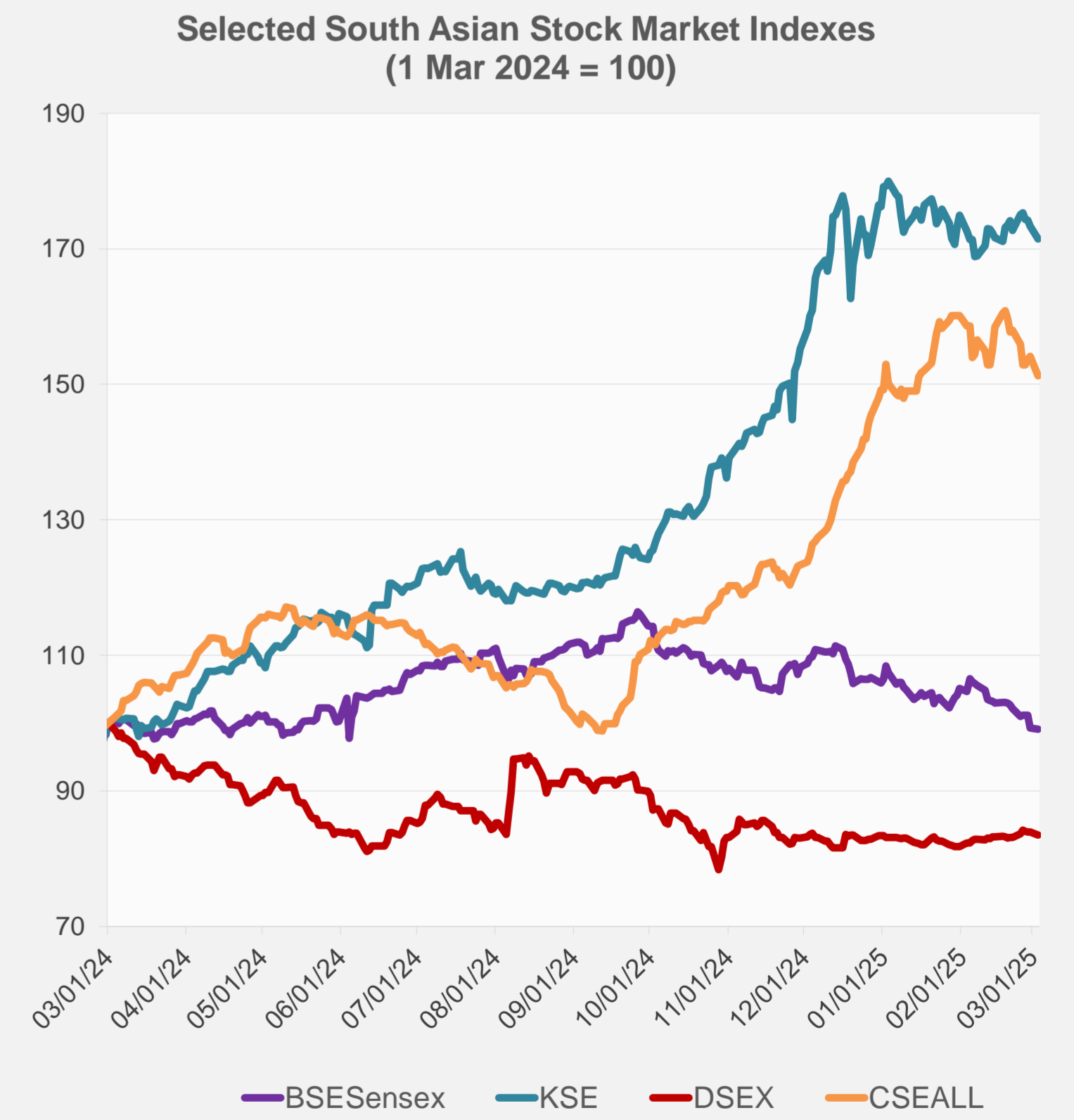
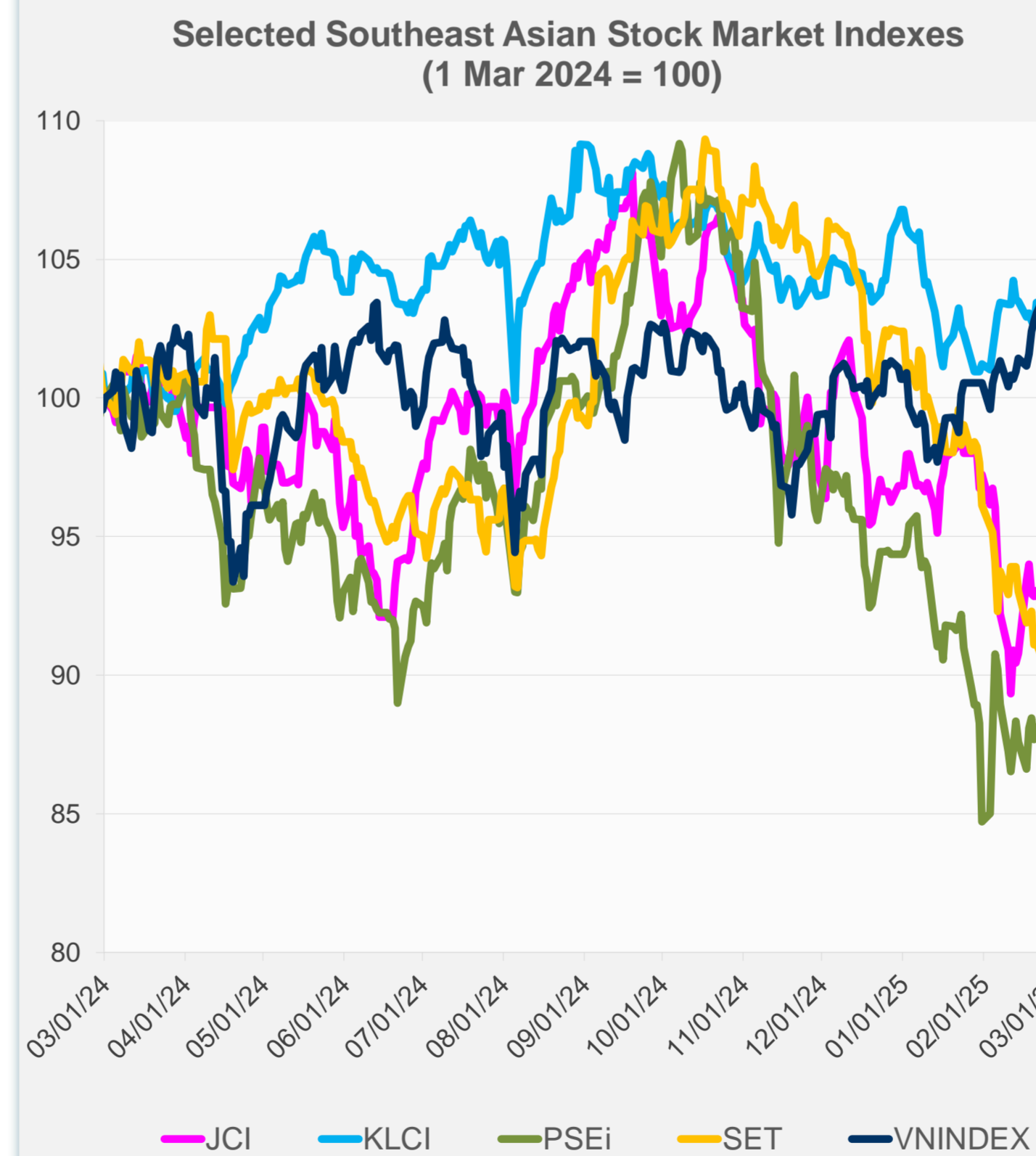
Source: Haver Analytics.

Daily Market Watch
STOCK INDEXES

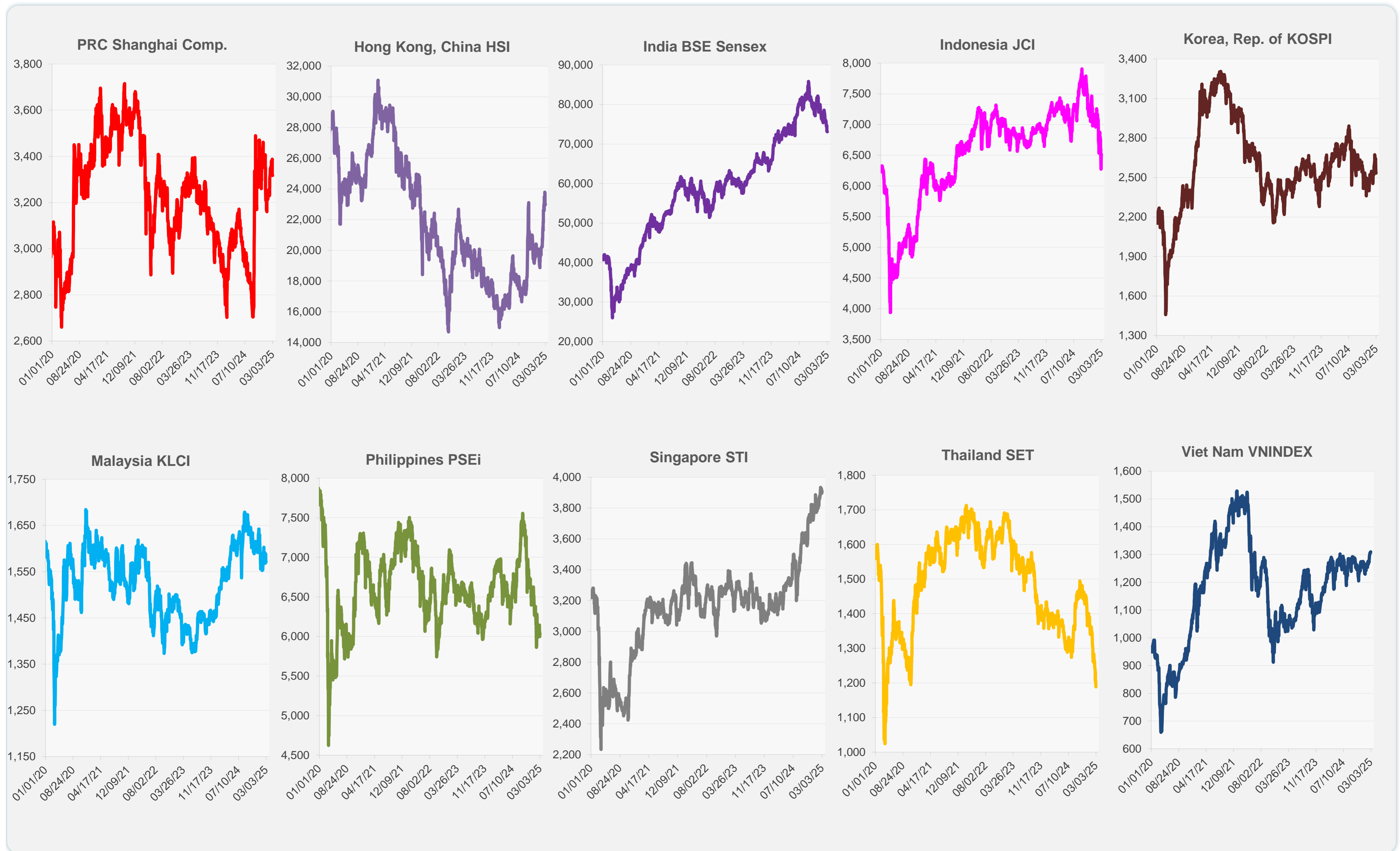
	Latest Closing	% change from Previous Day	% change from 01-Jan-25
US Dow Jones Ind Avg	43,191.24	-1.48	1.52
US NASDAQ	18,350.19	-2.64	-4.97
US S&P 500	5,849.72	-1.76	-0.54
UK FTSE 100	8,871.31	0.70	8.54
EURO STOXX 50	5,540.69	1.41	13.17
Japan NIKKEI 225	37,785.47	1.70	-5.29
Bangladesh DSEX	5,220.67	-0.51	0.05
PRC Shanghai Comp.	3,316.93	-0.12	-1.04
Hong Kong, China HSI	23,006.27	0.28	14.69
India BSE Sensex	73,085.94	-0.15	-6.91
Indonesia JCI	6,519.66	3.97	-7.91
Korea, Rep. of KOSPI	2,532.78	0.00	5.55
Malaysia KLCI	1,571.39	-0.21	-4.32
Pakistan KSE 100	111,986.88	-1.12	-4.29
Philippines PSEi	6,037.19	0.65	-7.53
Singapore STI	3,908.92	0.34	3.20
Sri Lanka CSEALL	16,167.30	-1.89	1.40
Taipei, China TWSE	22,756.25	-1.29	-1.21
Thailand SET	1,188.41	-1.27	-15.13
Viet Nam VNINDEX	1,309.37	0.31	3.36



NIE = Newly Industrialized Economies



Sources: ADB calculations using data from CEIC Data Company and Haver Analytics.



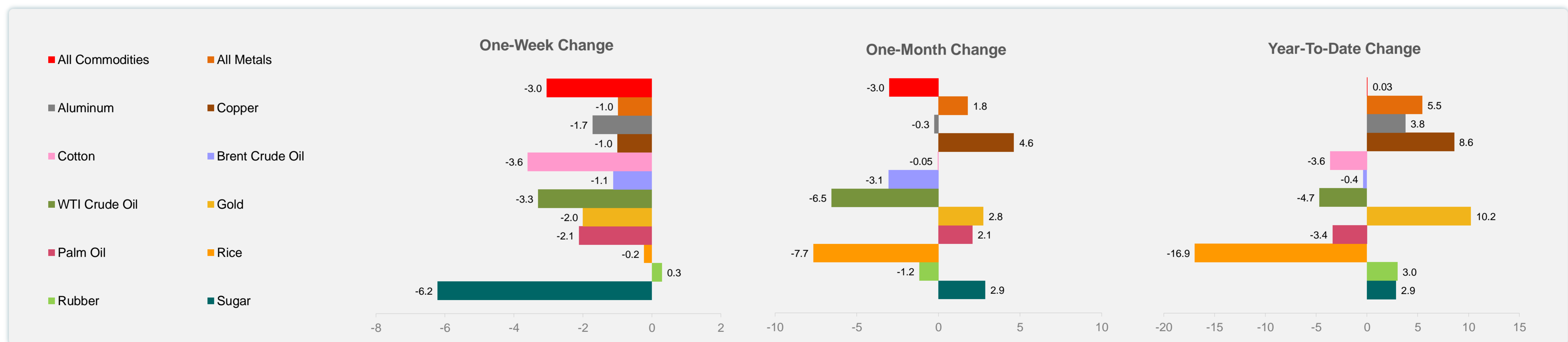
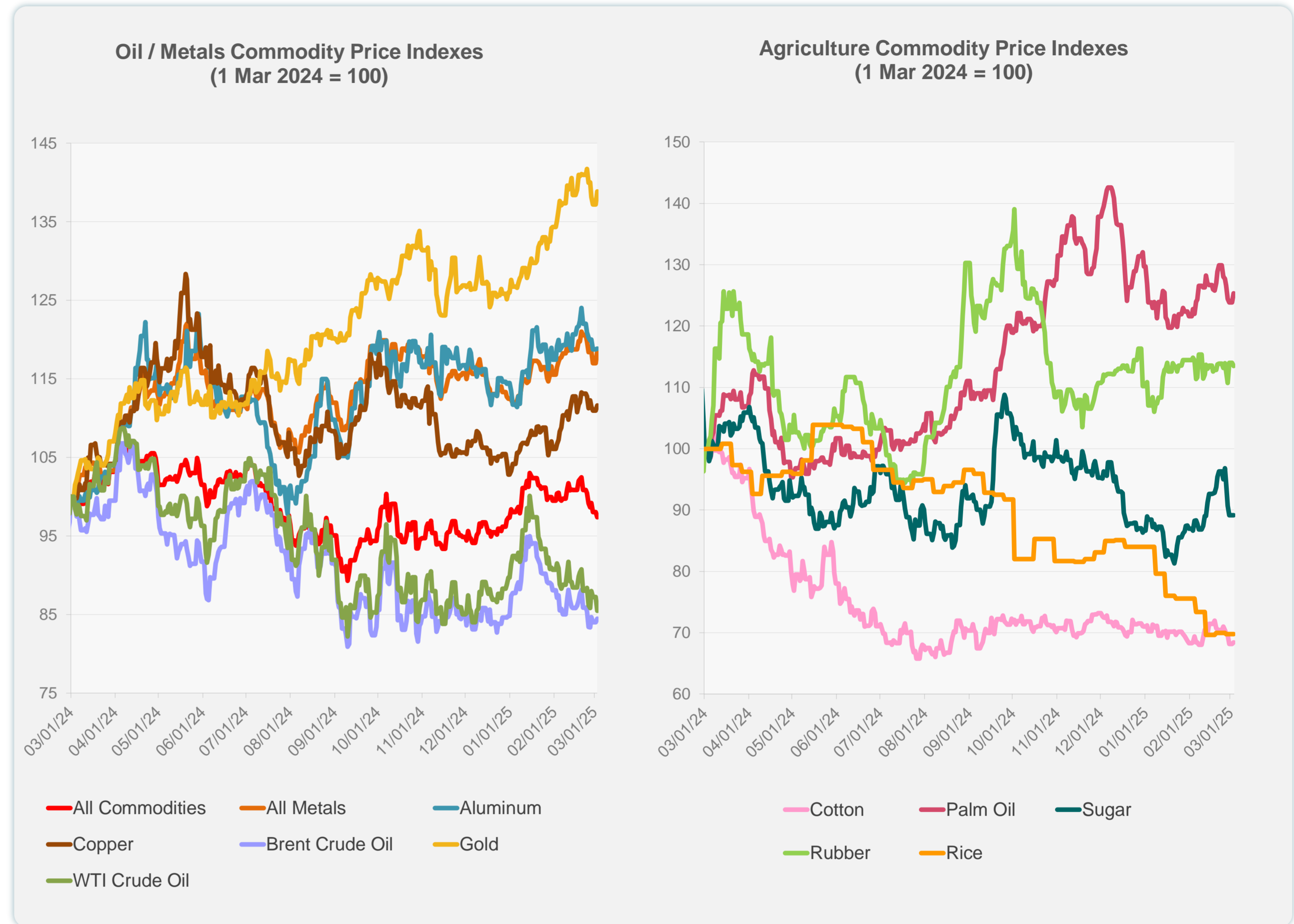
Sources: CEIC Data Company and Haver Analytics.

Daily Market Watch
COMMODITY PRICES

	Unit	Latest Closing	% change from Previous Day	% change from 01-Jan-25
S&P All Commodities	US\$	549.83	-0.68	0.03
S&P All Metals	US\$	324.14	1.37	5.45
Aluminum	US\$/metric ton	2,622.58	0.06	3.79
Copper	US\$/metric ton	9,394.28	0.60	8.57
Cotton	US cents/lb	63.51	0.41	-3.63
Brent Crude Oil	US\$/barrel	73.83	0.54	-0.38
WTI Crude Oil	US\$/barrel	68.37	-1.99	-4.67
Gold	US\$/troy oz	2,892.73	1.22	10.22
Palm Oil	US\$/metric tonne	1,062.82	1.18	-3.39
Rice ¹	US\$/metric ton	446.00	0.00	-16.95
Rubber ²	US\$/kg	243.90	-0.45	3.00
Sugar	US cents/lb	18.72	0.00	2.86

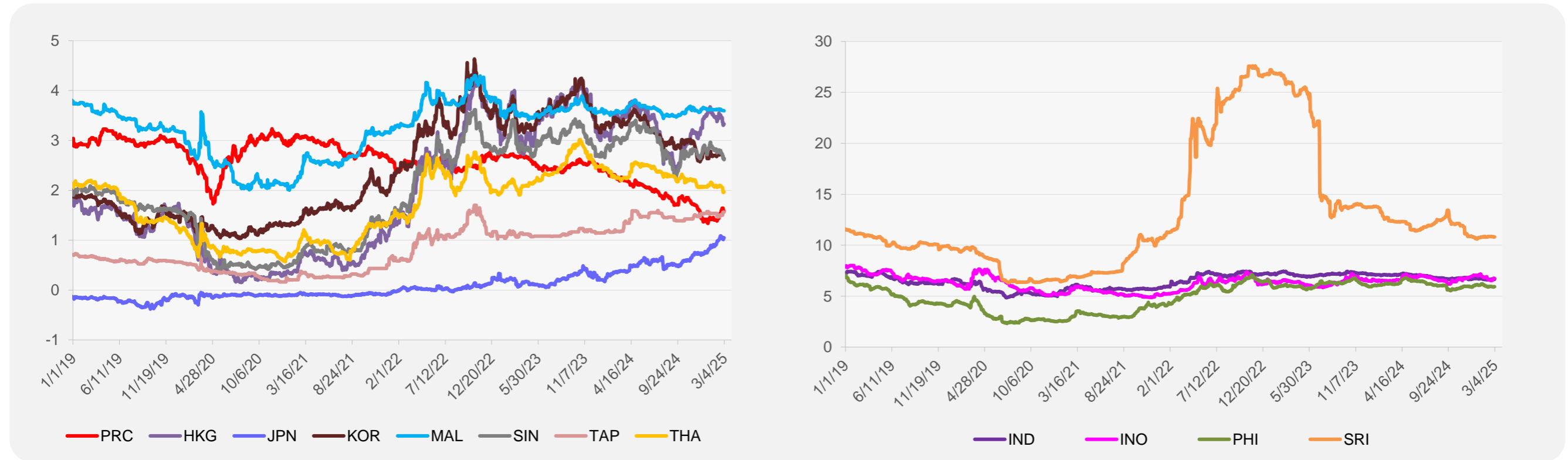
¹ Latest closing price from 26 February 2025.

² Singapore Exchange, Ribbed Smoked Sheet Rubber.

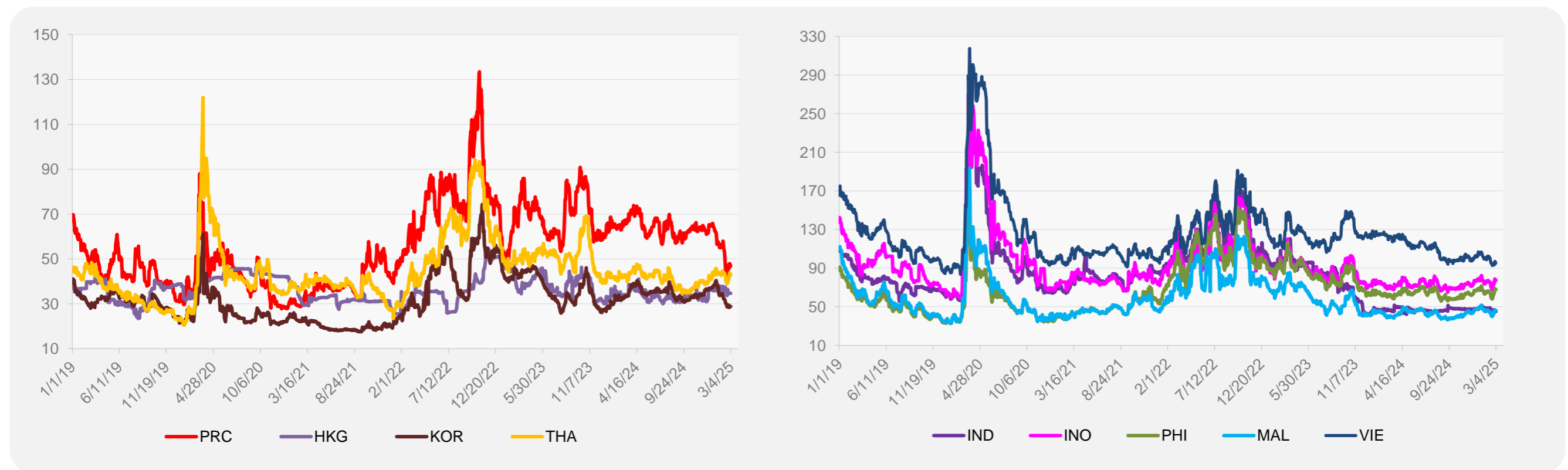


Source: ADB calculations using data from Bloomberg.

5-YEAR LOCAL CURRENCY GOVERNMENT BOND YIELDS (%)



5-YEAR CREDIT DEFAULT SWAP¹



¹ In USD and based on sovereign bonds.
Source: ADB calculations using data from Bloomberg.