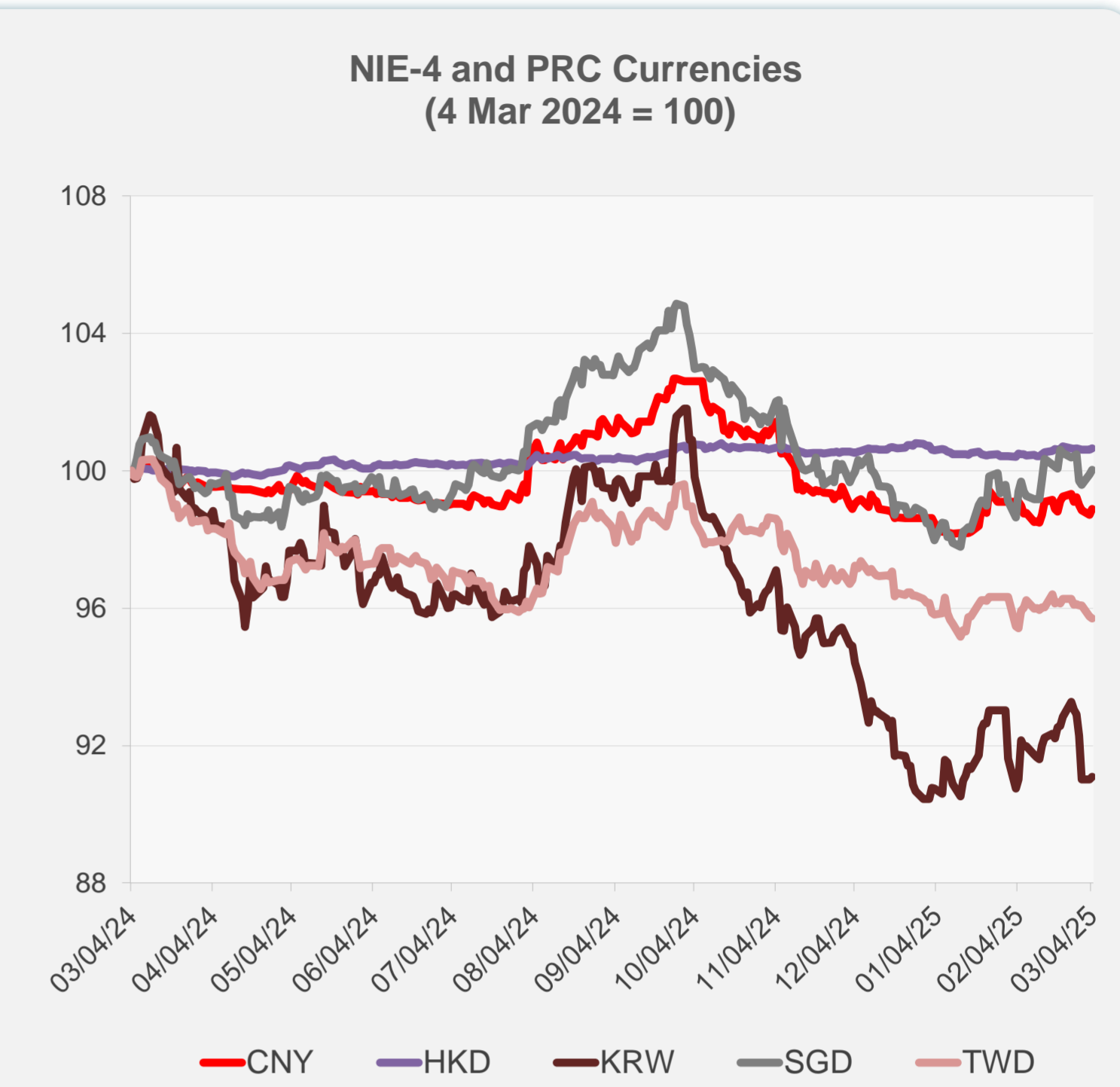
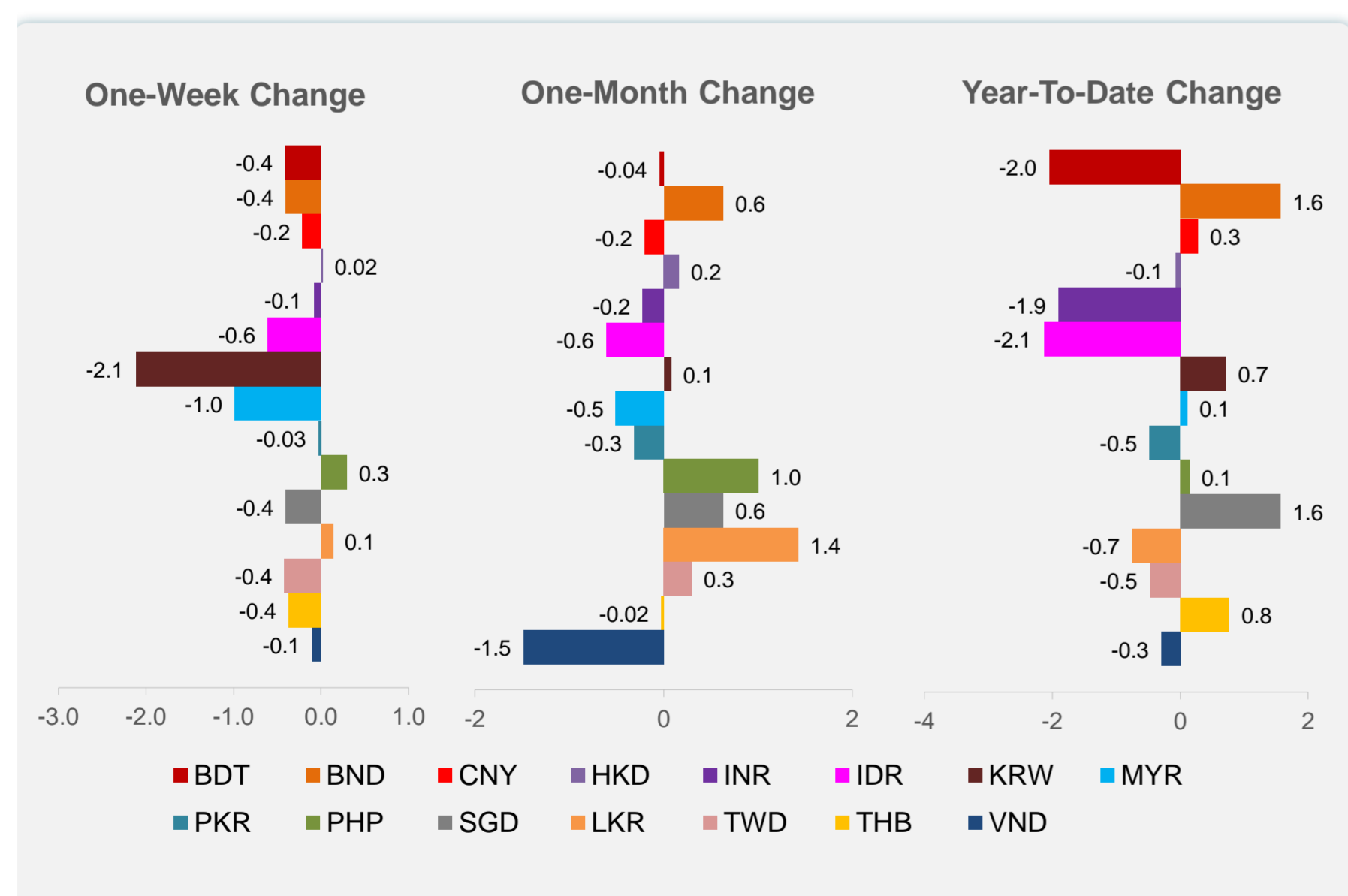
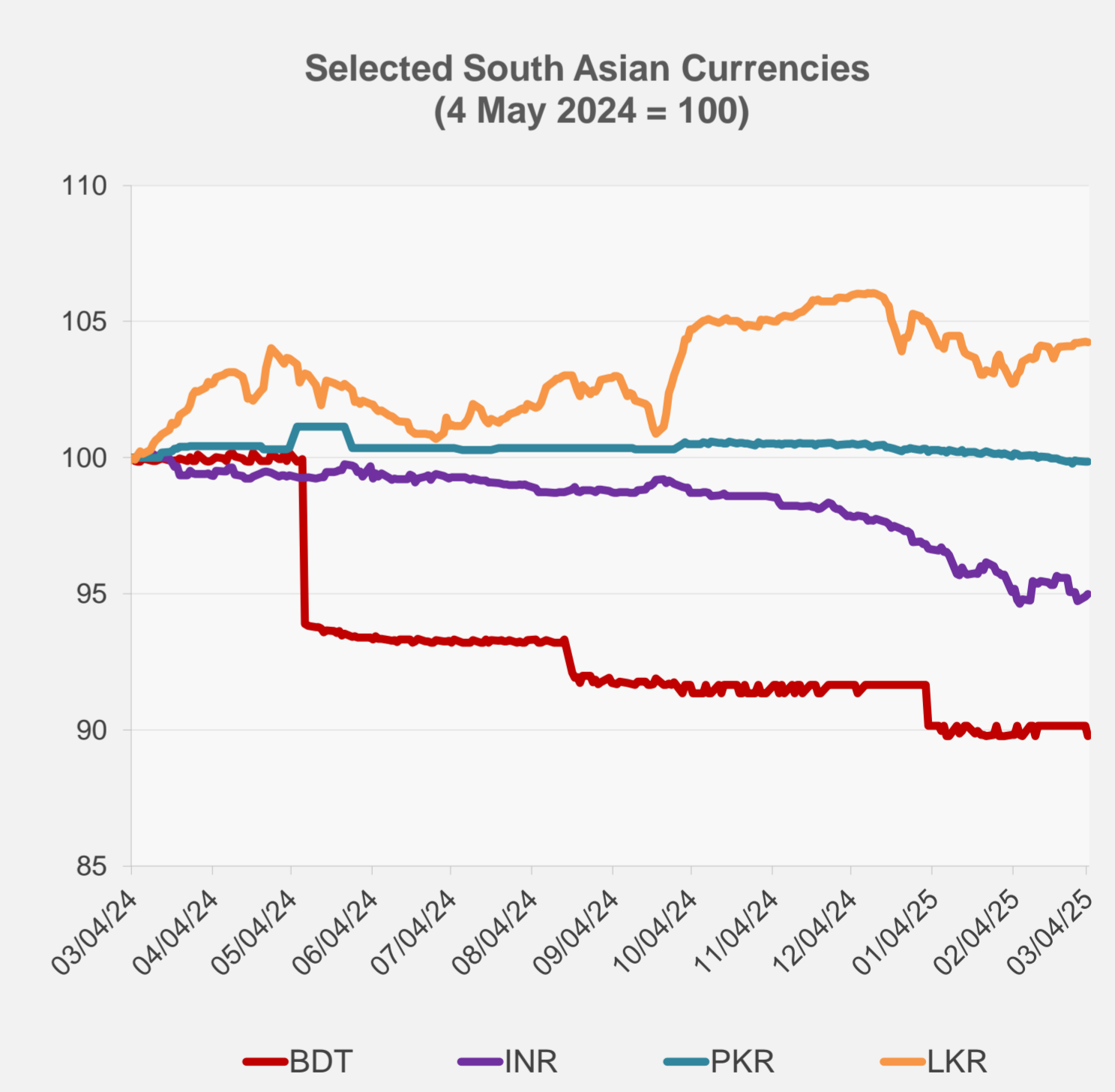
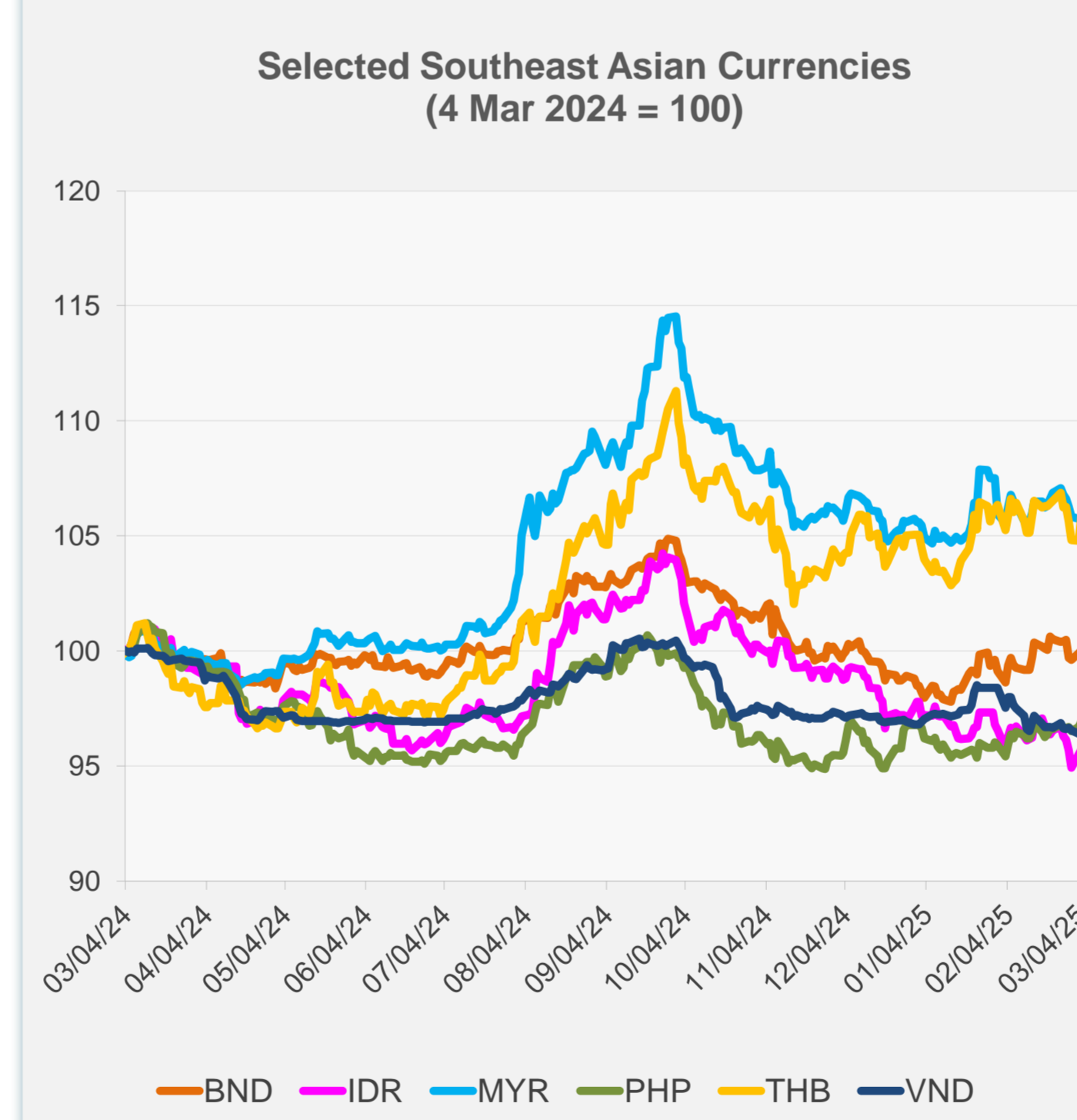


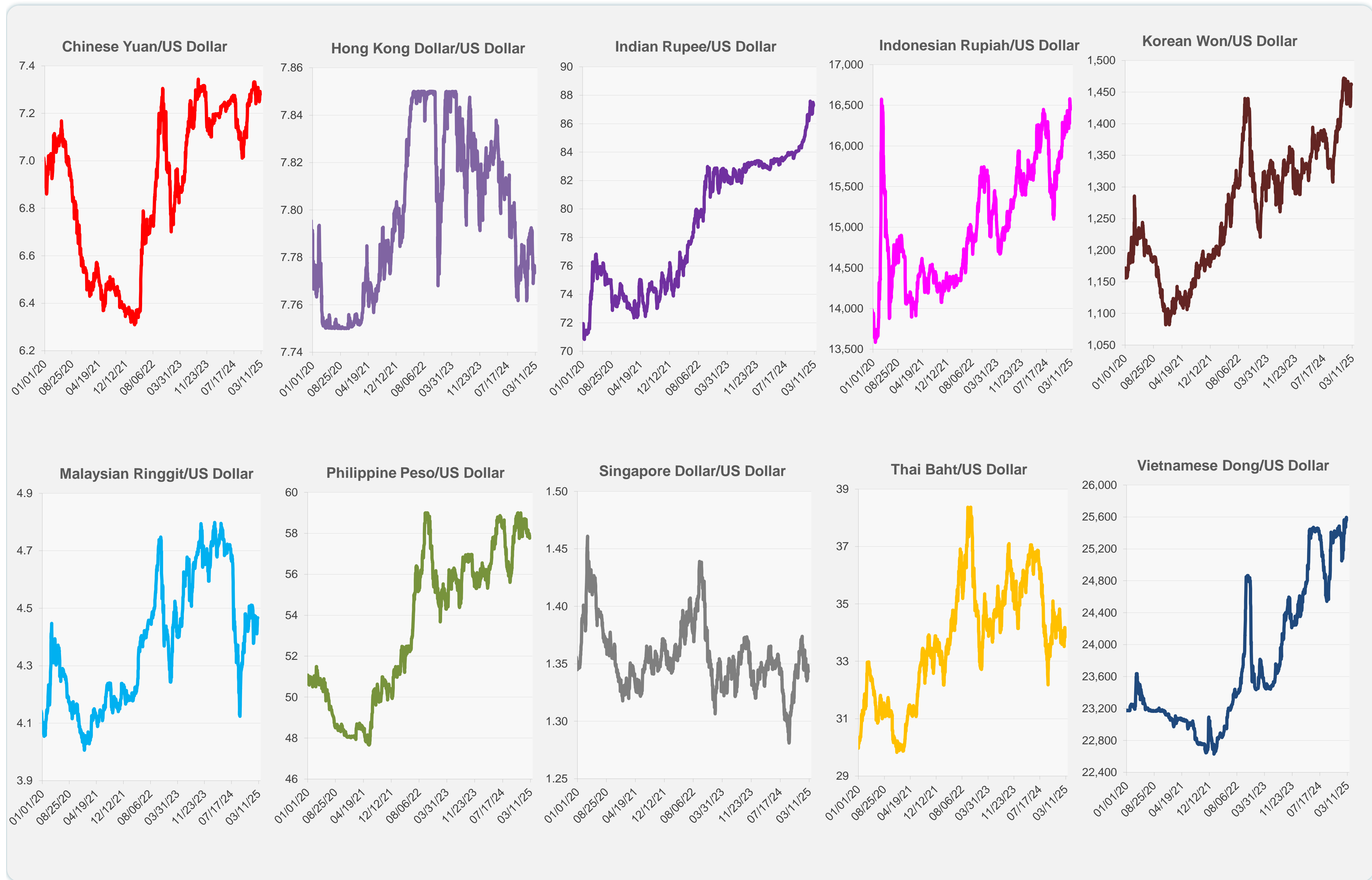
	Latest Closing	% change from Previous Day	% change from 01-Jan-25
Euro	0.95	0.40	1.66
Japanese yen (JPY)	148.33	1.30	5.96
Bangladeshi taka (BDT)	122.00	-0.41	-2.05
Brunei dollar (BND)	1.34	0.13	1.57
Chinese yuan (CNY)	7.28	0.19	0.27
Hong Kong dollar (HKD)	7.77	0.04	-0.07
Indian rupee (INR)	87.27	0.10	-1.90
Indonesian rupiah (IDR)	16,445.00	0.21	-2.13
Korean won (KRW)	1,461.70	0.08	0.71
Malaysian ringgit (MYR)	4.47	-0.01	0.11
Pakistan rupee (PKR)	279.70	0.00	-0.47
Philippine peso (PHP)	57.76	0.22	0.14
Singapore dollar (SGD)	1.34	0.13	1.57
Sri Lanka rupee (LKR)	295.20	-0.03	-0.75
Taipei,China NT dollar (TWD)	32.94	-0.05	-0.47
Thai baht (THB)	33.84	1.00	0.77
Vietnamese dong (VND)	25,560.00	0.14	-0.29



NIE = Newly Industrialized Economies



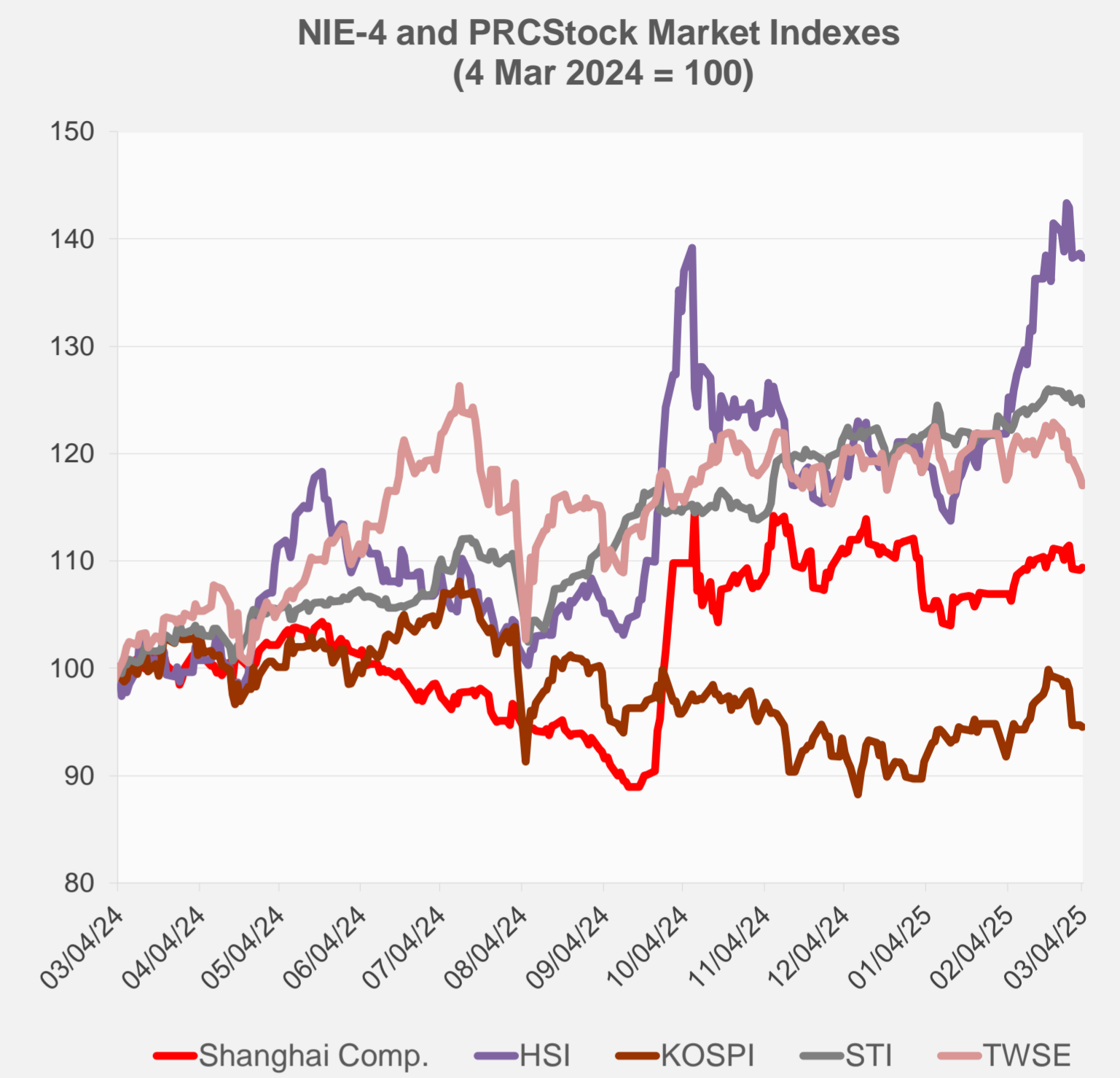
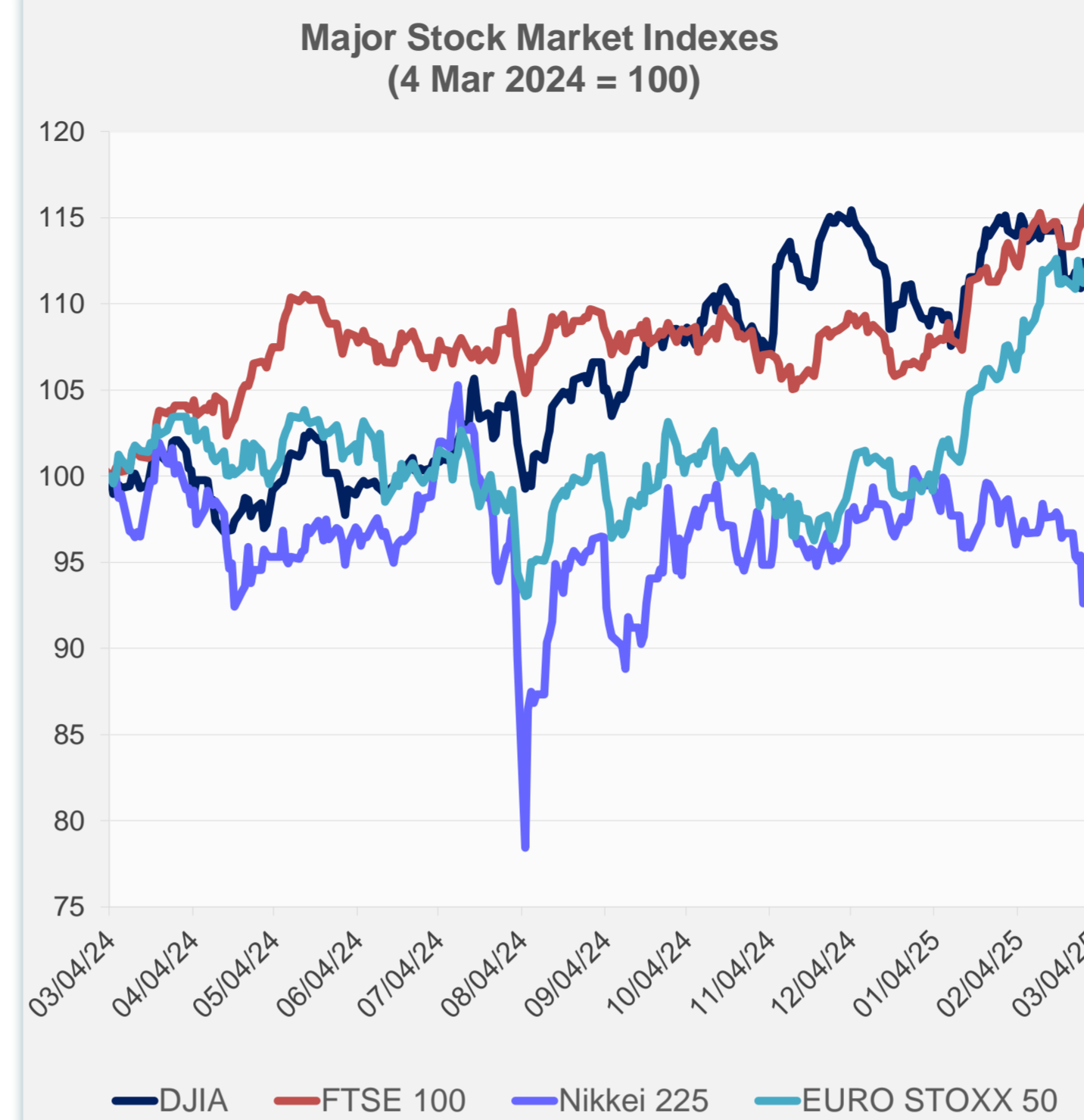
Note: Negative/Decreasing values indicate depreciation of local currency, and positive/increasing values indicate appreciation.
Source: ADB calculations using data from Haver Analytics.



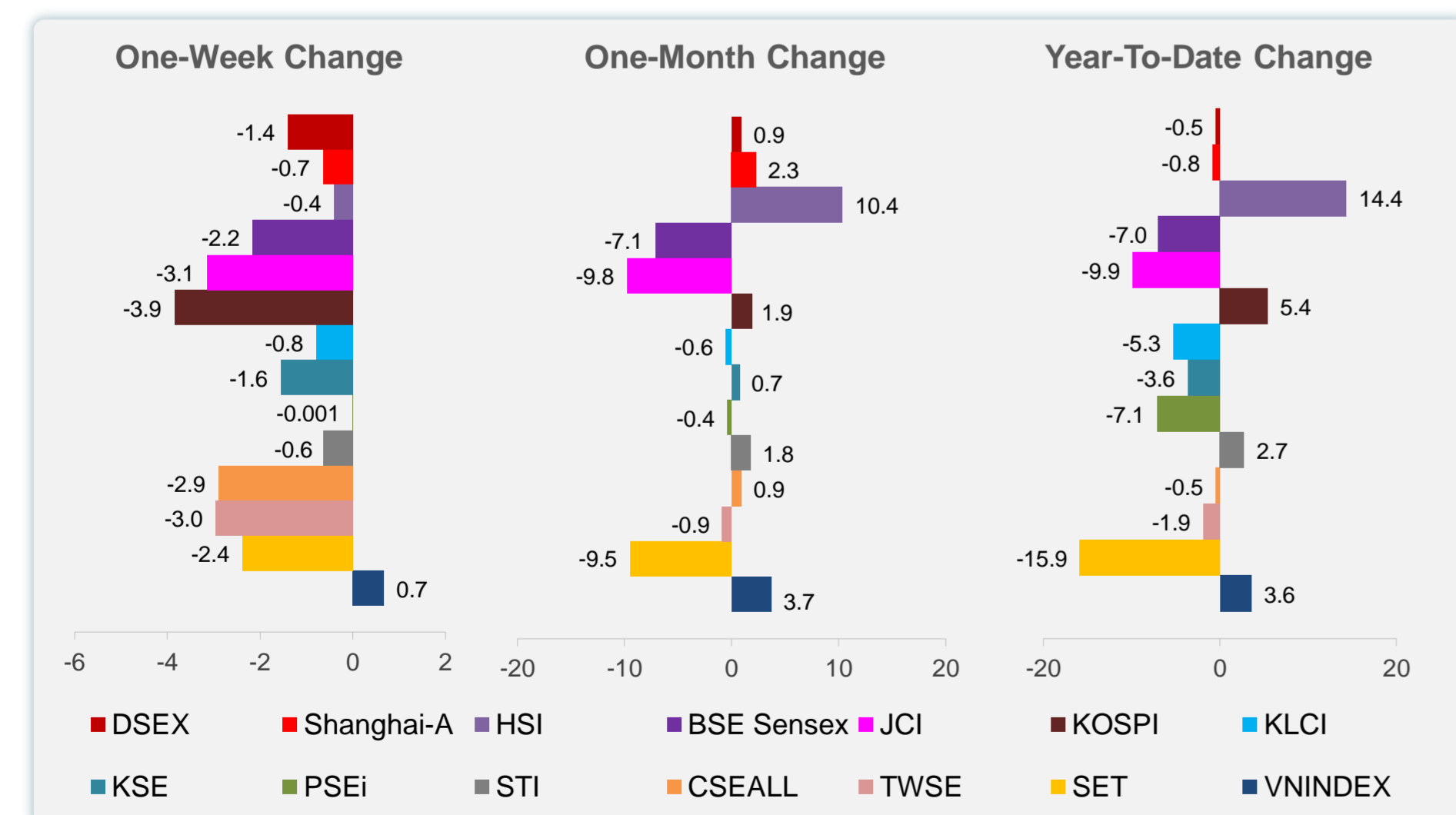
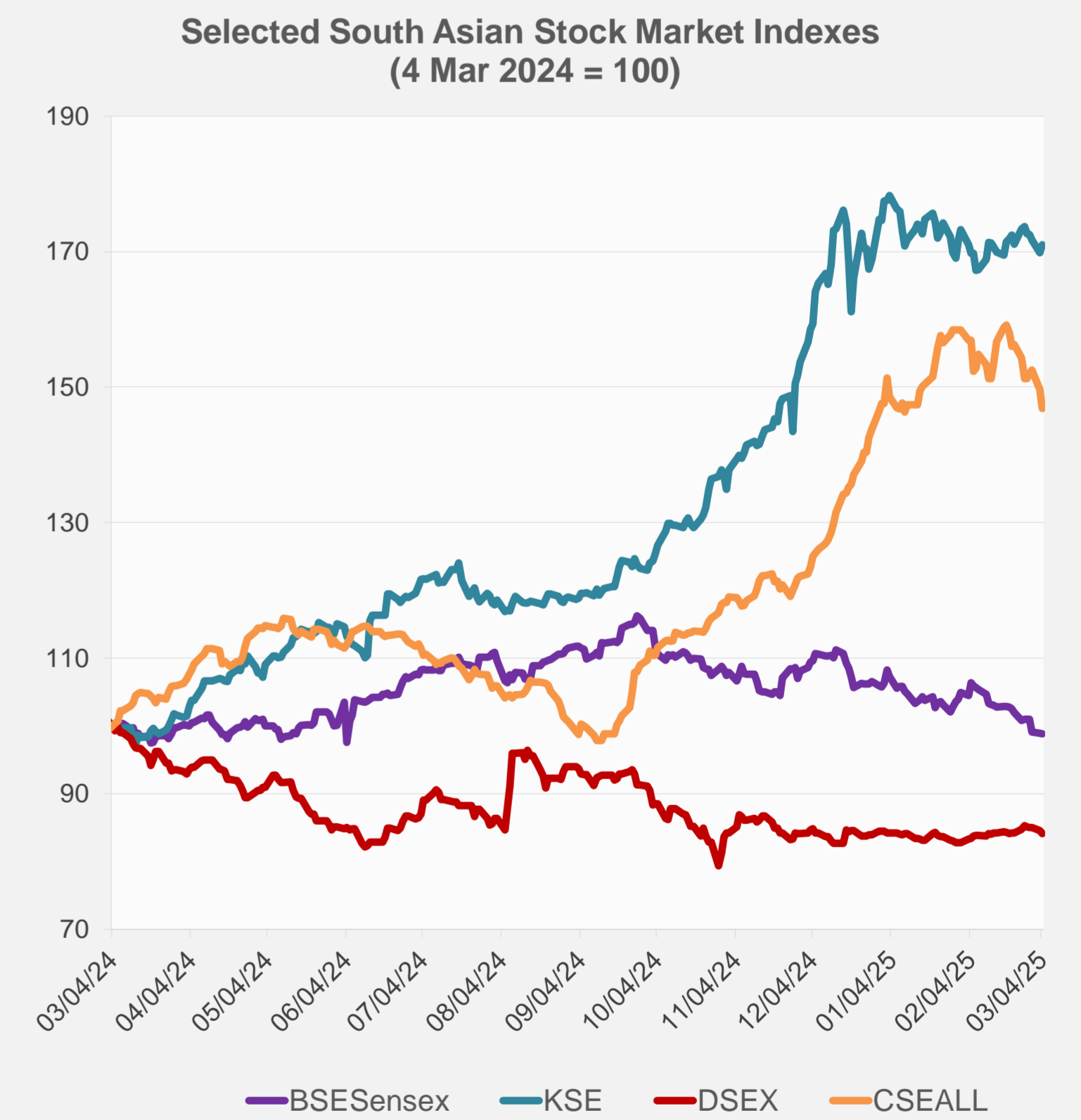
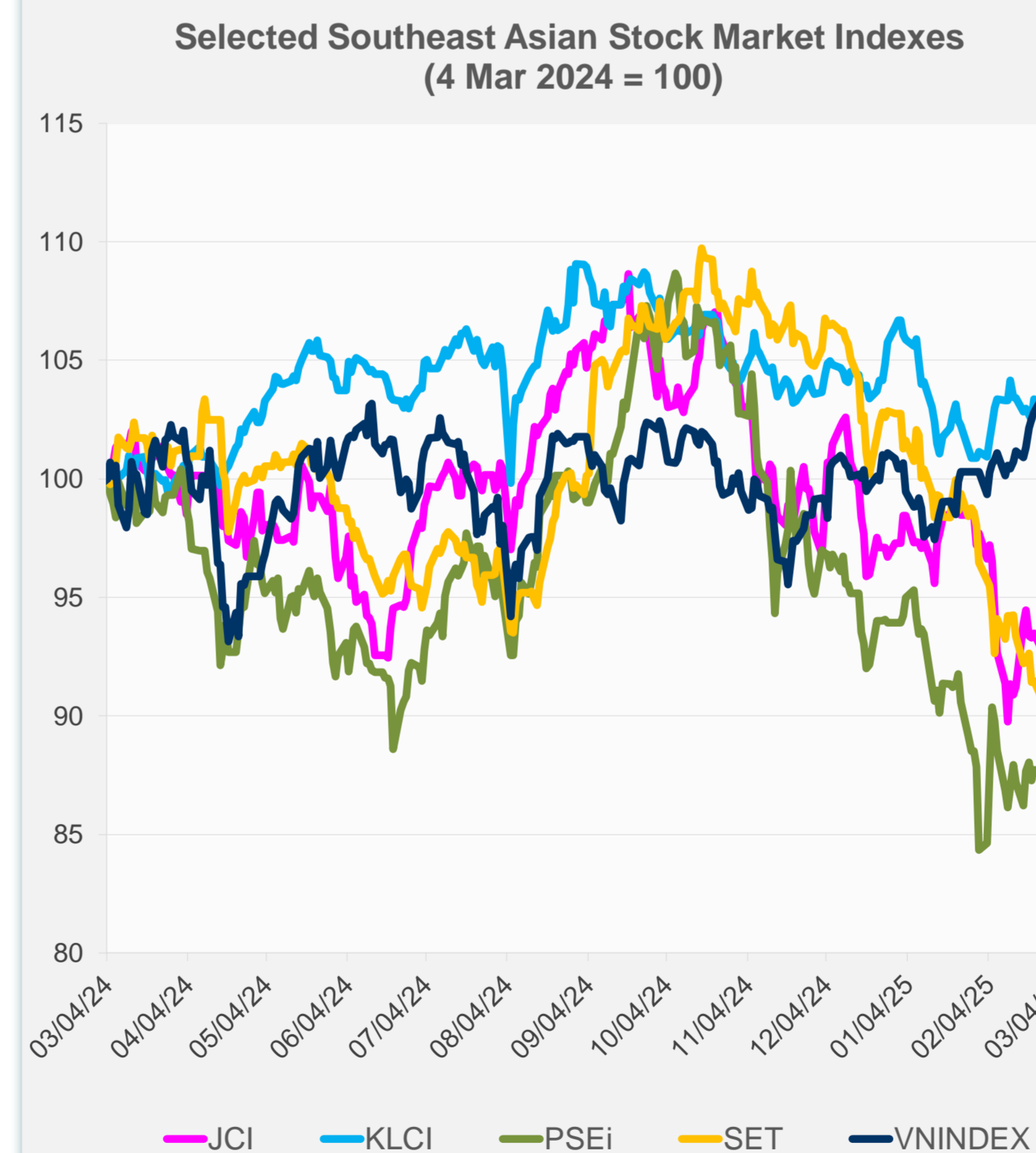
Source: Haver Analytics.

Daily Market Watch STOCK INDEXES

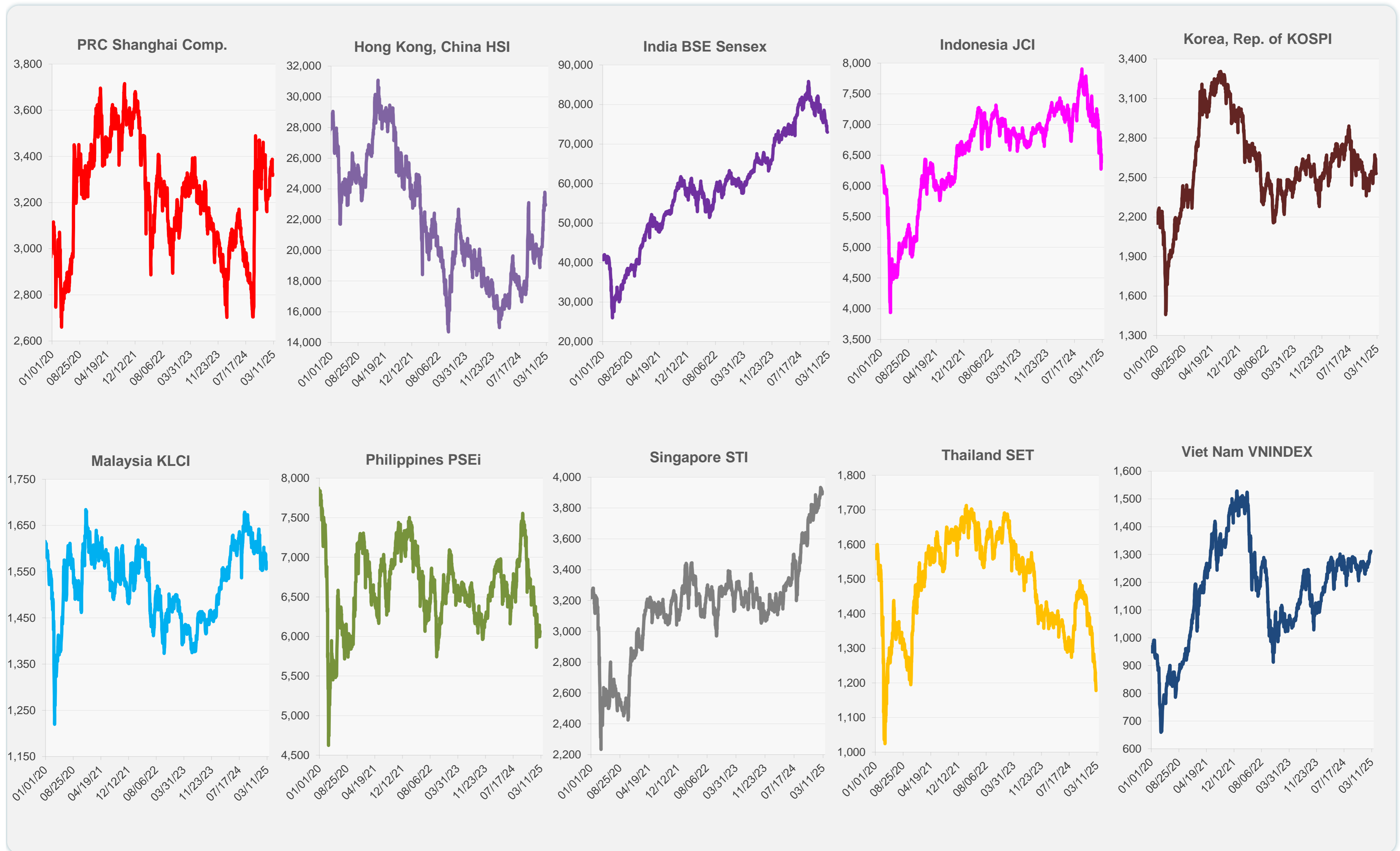
	Latest Closing	% change from Previous Day	% change from 01-Jan-25
US Dow Jones Ind Avg	42,520.99	-1.55	-0.05
US NASDAQ	18,285.16	-0.35	-5.31
US S&P 500	5,778.15	-1.22	-1.76
UK FTSE 100	8,759.00	-1.27	7.17
EURO STOXX 50	5,387.31	-2.77	10.04
Japan NIKKEI 225	37,331.18	-1.20	-6.43
Bangladesh DSEX	5,194.11	-0.51	-0.46
PRC Shanghai Comp.	3,324.21	0.22	-0.82
Hong Kong, China HSI	22,941.77	-0.28	14.37
India BSE Sensex	72,989.93	-0.13	-7.03
Indonesia JCI	6,380.40	-2.14	-9.88
Korea, Rep. of KOSPI	2,528.92	-0.15	5.39
Malaysia KLCI	1,555.66	-1.00	-5.28
Pakistan KSE 100	112,743.79	0.68	-3.64
Philippines PSEi	6,064.11	0.45	-7.12
Singapore STI	3,890.76	-0.46	2.72
Sri Lanka CSEALL	15,870.25	-1.84	-0.47
Taipei, China TWSE	22,596.88	-0.70	-1.90
Thailand SET	1,177.64	-0.91	-15.90
Viet Nam VNINDEX	1,311.91	0.19	3.56



NIE = Newly Industrialized Economies



Sources: ADB calculations using data from CEIC Data Company and Haver Analytics.



Sources: CEIC Data Company and Haver Analytics.

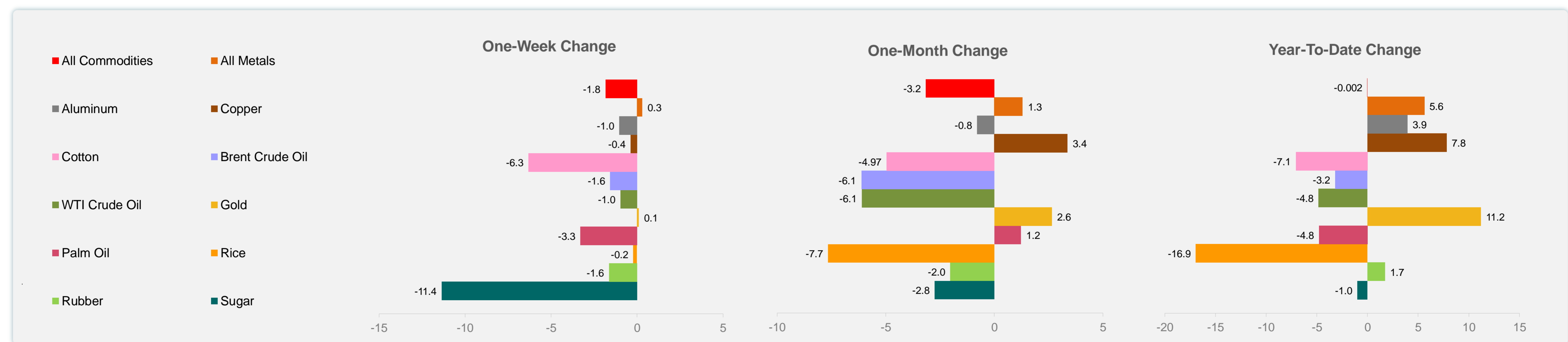
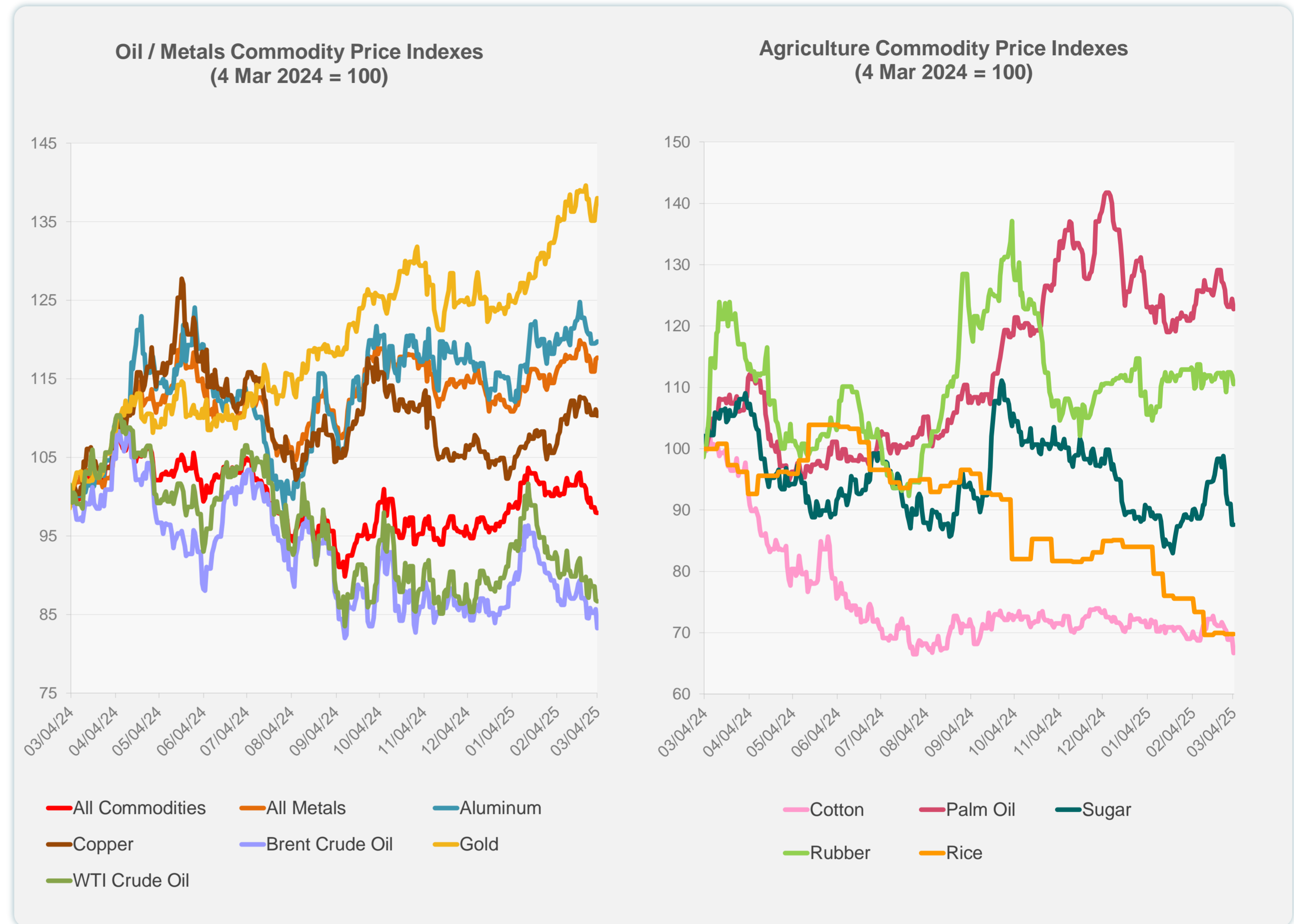
Daily Market Watch
COMMODITY PRICES

5 March 2025, 9:00 AM Manila

	Unit	Latest Closing	% change from Previous Day	% change from 01-Jan-25
S&P All Commodities	US\$	549.63	-0.04	0.00
S&P All Metals	US\$	324.61	0.15	5.61
Aluminum	US\$/metric ton	2,626.50	0.15	3.95
Copper	US\$/metric ton	9,328.39	-0.70	7.81
Cotton	US cents/lb	61.24	-3.57	-7.07
Brent Crude Oil	US\$/barrel	71.75	-2.82	-3.18
WTI Crude Oil	US\$/barrel	68.26	-0.16	-4.82
Gold	US\$/troy oz	2,917.89	0.87	11.18
Palm Oil	US\$/metric tonne	1,047.52	-1.35	-4.78
Rice ¹	US\$/metric ton	446.00	0.00	-16.95
Rubber ²	US\$/kg	240.90	-1.23	1.73
Sugar	US cents/lb	18.02	0.00	-0.99

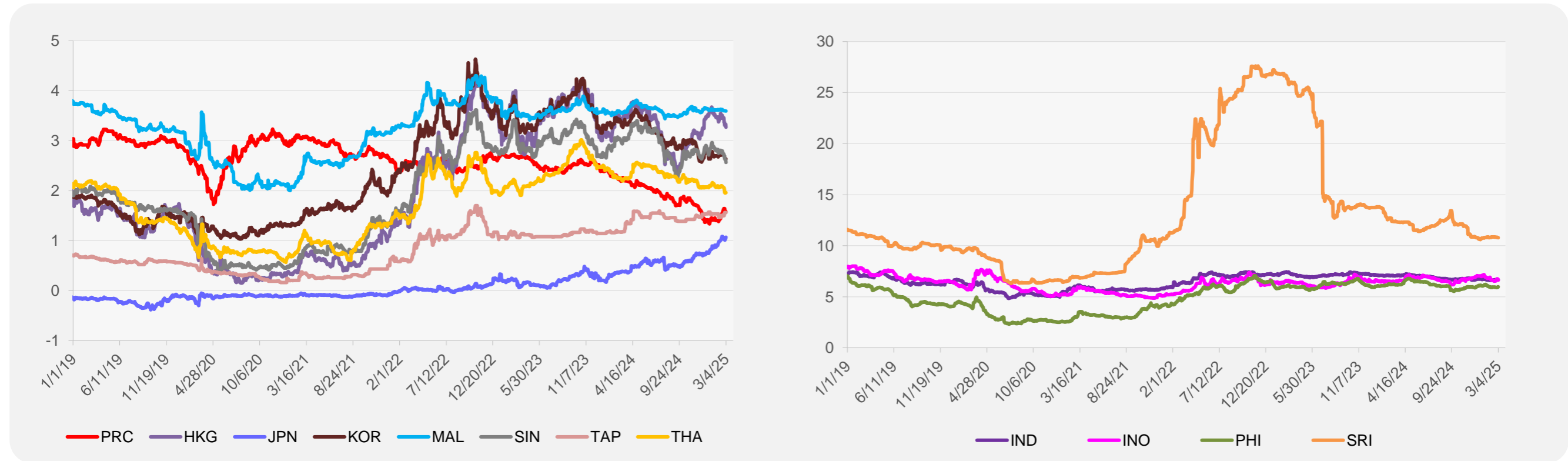
¹ Latest closing price from 26 February 2025.

² Singapore Exchange, Ribbed Smoked Sheet Rubber.

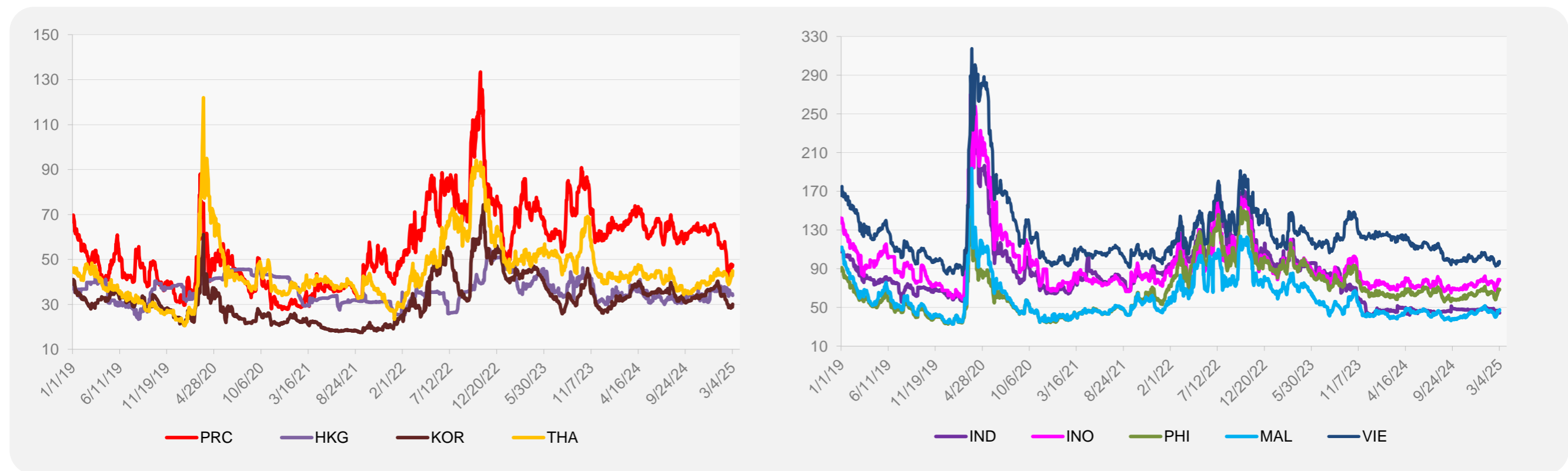


Source: ADB calculations using data from Bloomberg.

5-YEAR LOCAL CURRENCY GOVERNMENT BOND YIELDS (%)



5-YEAR CREDIT DEFAULT SWAP¹



¹ In USD and based on sovereign bonds.
Source: ADB calculations using data from Bloomberg.