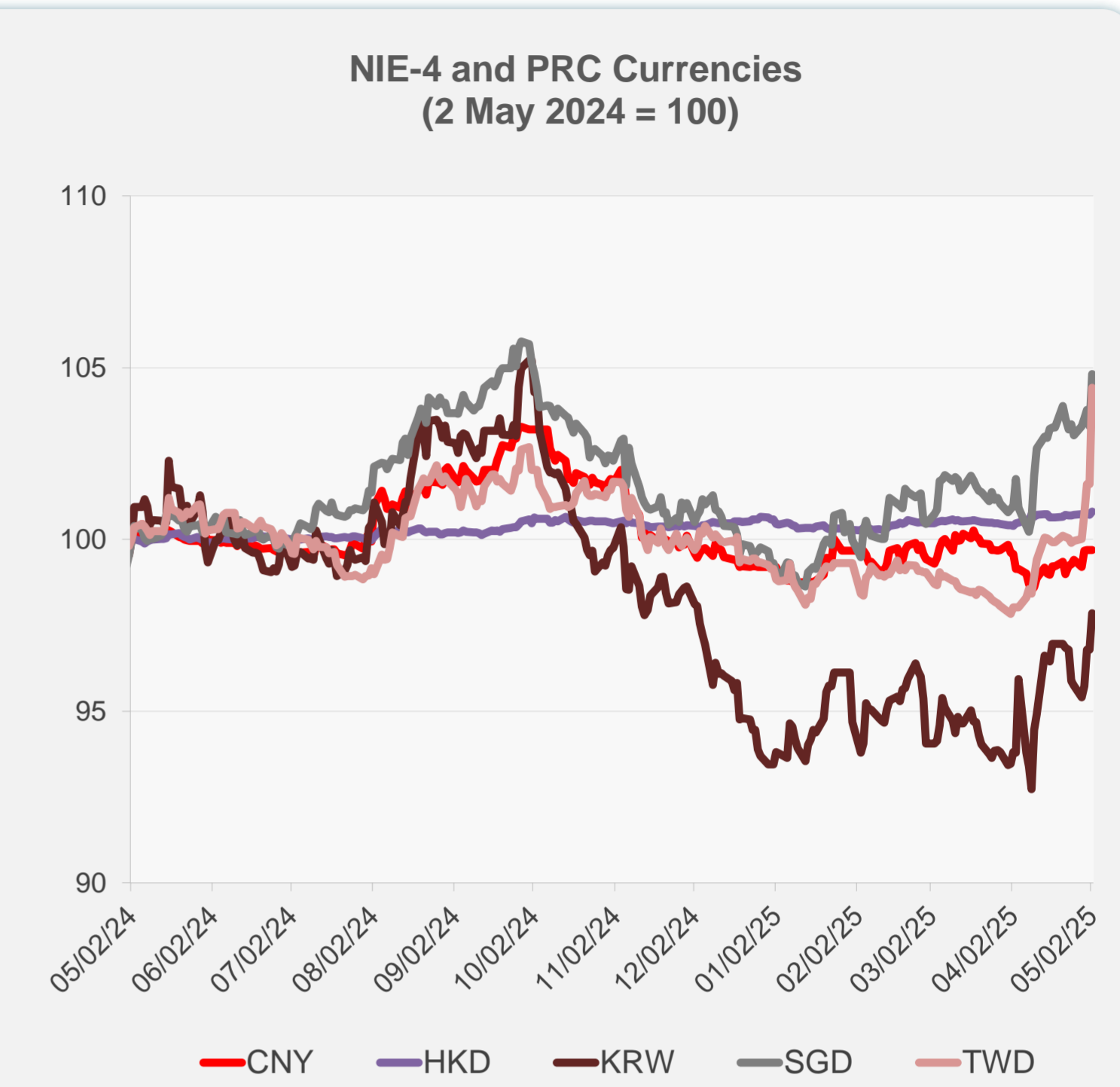
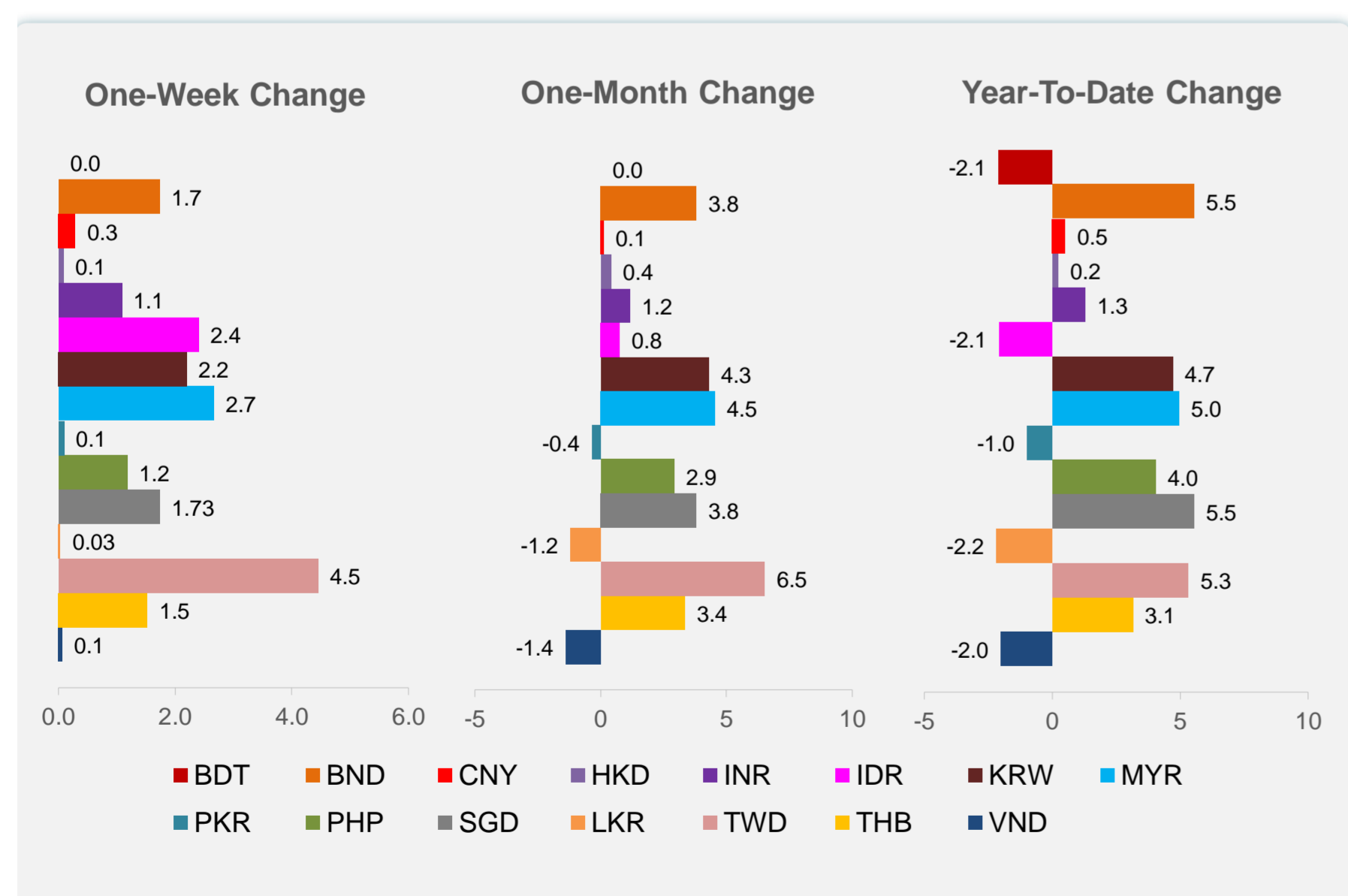
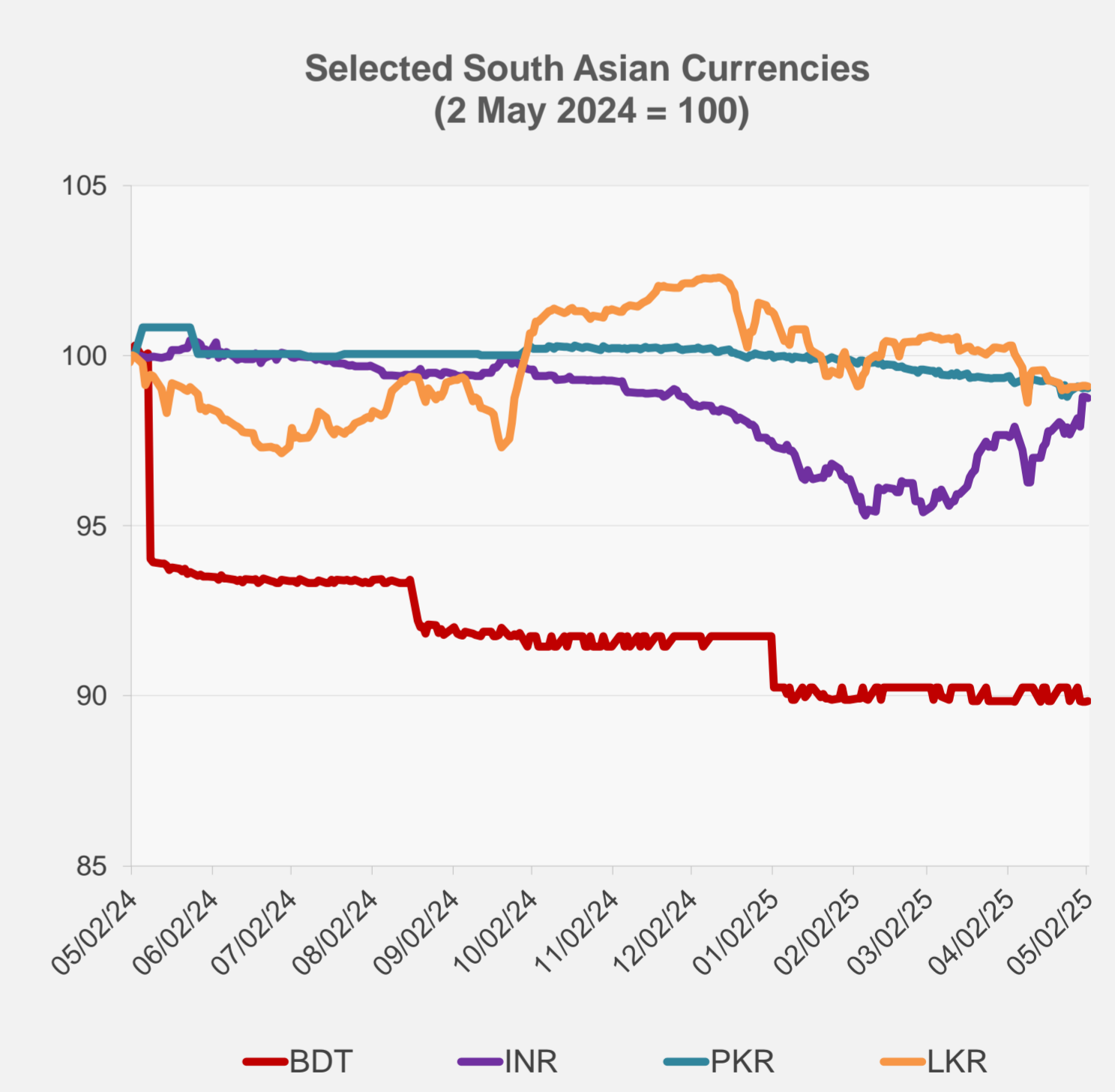
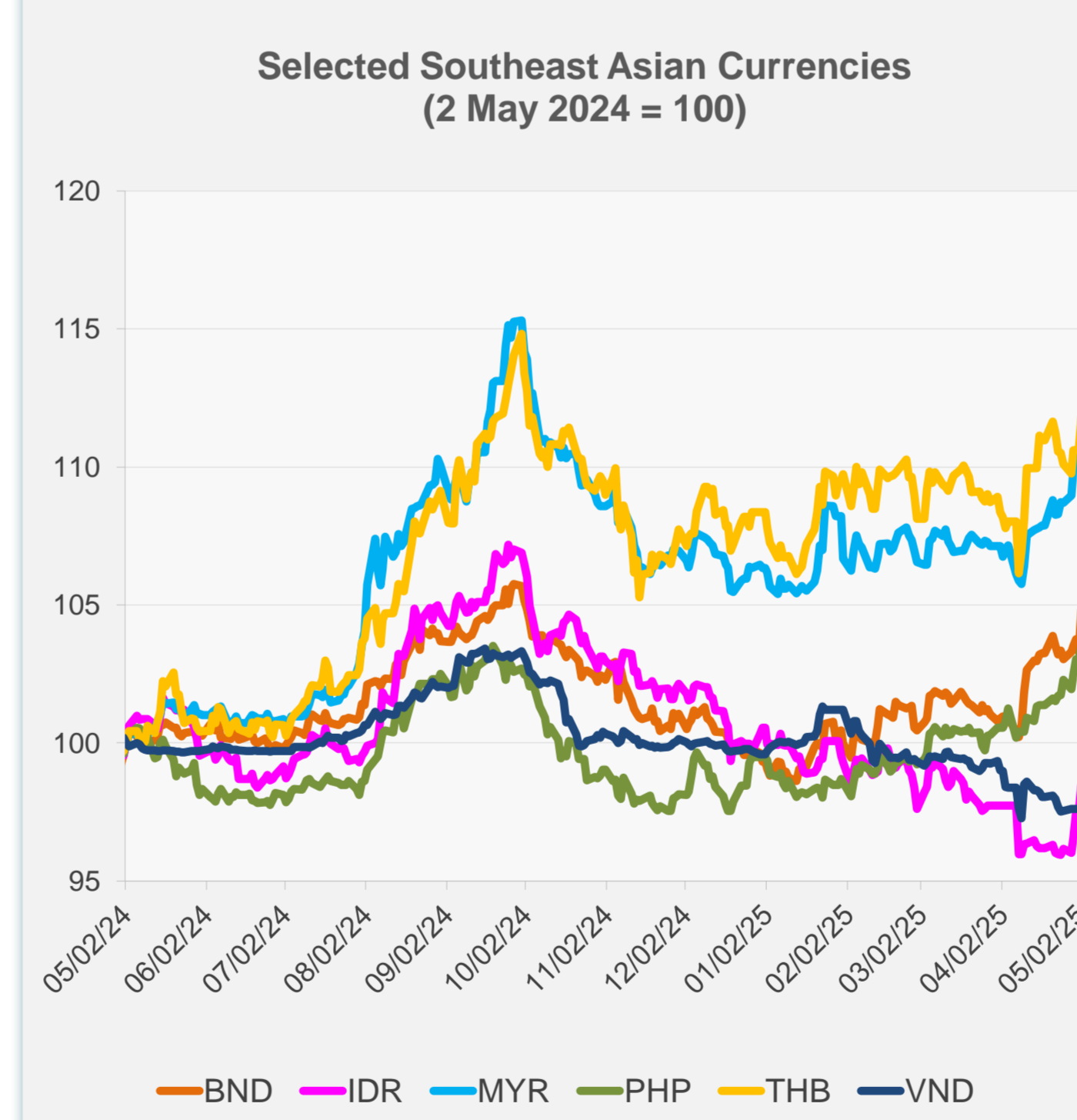


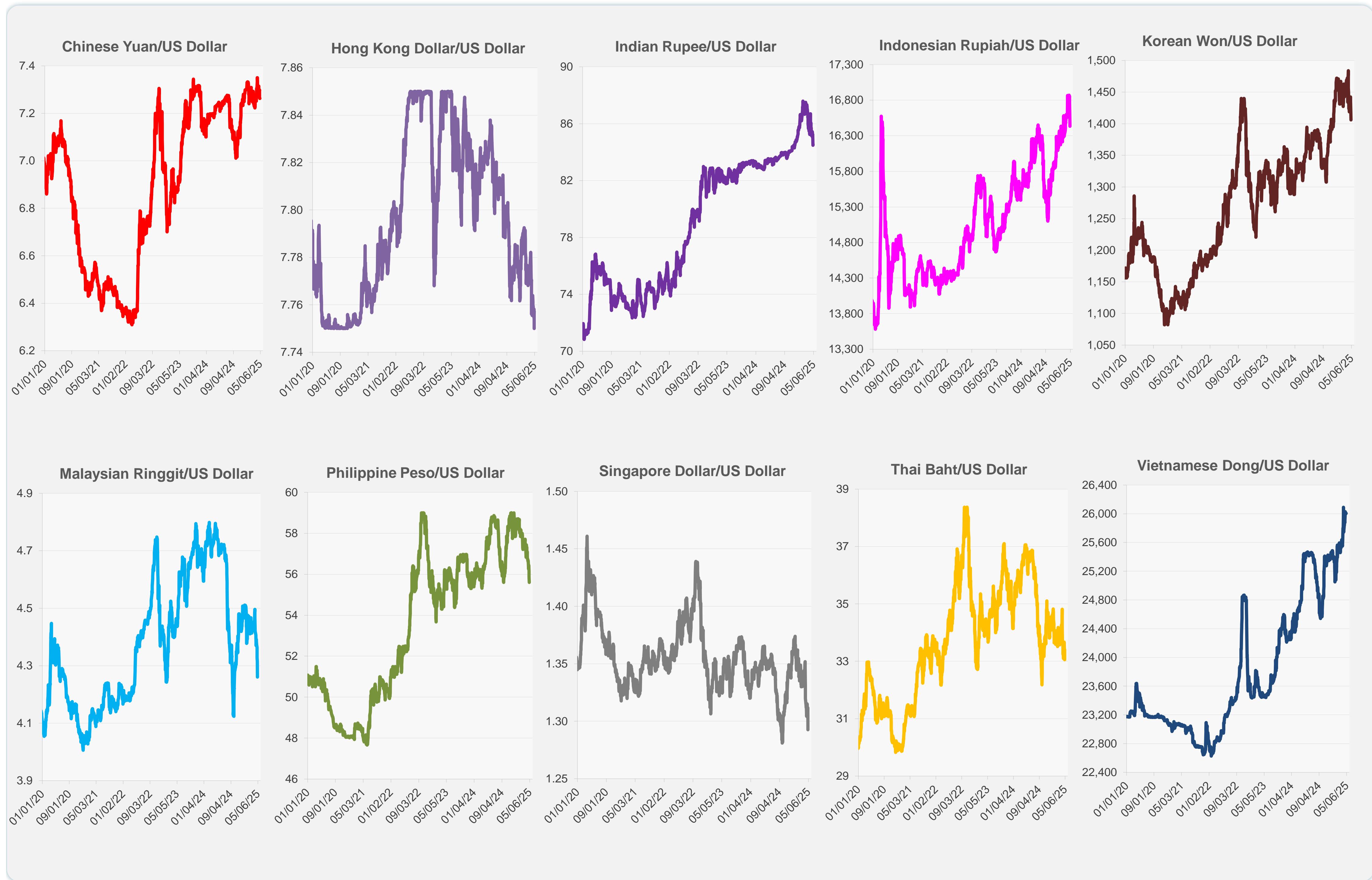
	Latest Closing	% change from Previous Day	% change from 01-Jan-25
Euro	0.88	0.77	9.79
Japanese yen (JPY)	144.00	0.95	9.14
Bangladeshi taka (BDT)	122.05	0.02	-2.09
Brunei dollar (BND)	1.29	1.47	5.54
Chinese yuan (CNY)	7.26	0.00	0.50
Hong Kong dollar (HKD)	7.75	0.09	0.23
Indian rupee (INR)	84.53	-0.05	1.29
Indonesian rupiah (IDR)	16,435.00	1.00	-2.07
Korean won (KRW)	1,406.10	1.10	4.70
Malaysian ringgit (MYR)	4.26	1.28	4.95
Pakistan rupee (PKR)	281.13	-0.03	-0.98
Philippine peso (PHP)	55.60	0.46	4.04
Singapore dollar (SGD)	1.29	1.47	5.54
Sri Lanka rupee (LKR)	299.50	-0.01	-2.17
Taipei,China NT dollar (TWD)	31.13	2.75	5.33
Thai baht (THB)	33.06	1.06	3.15
Vietnamese dong (VND)	26,005.00	0.00	-2.00



NIE = Newly Industrialized Economies



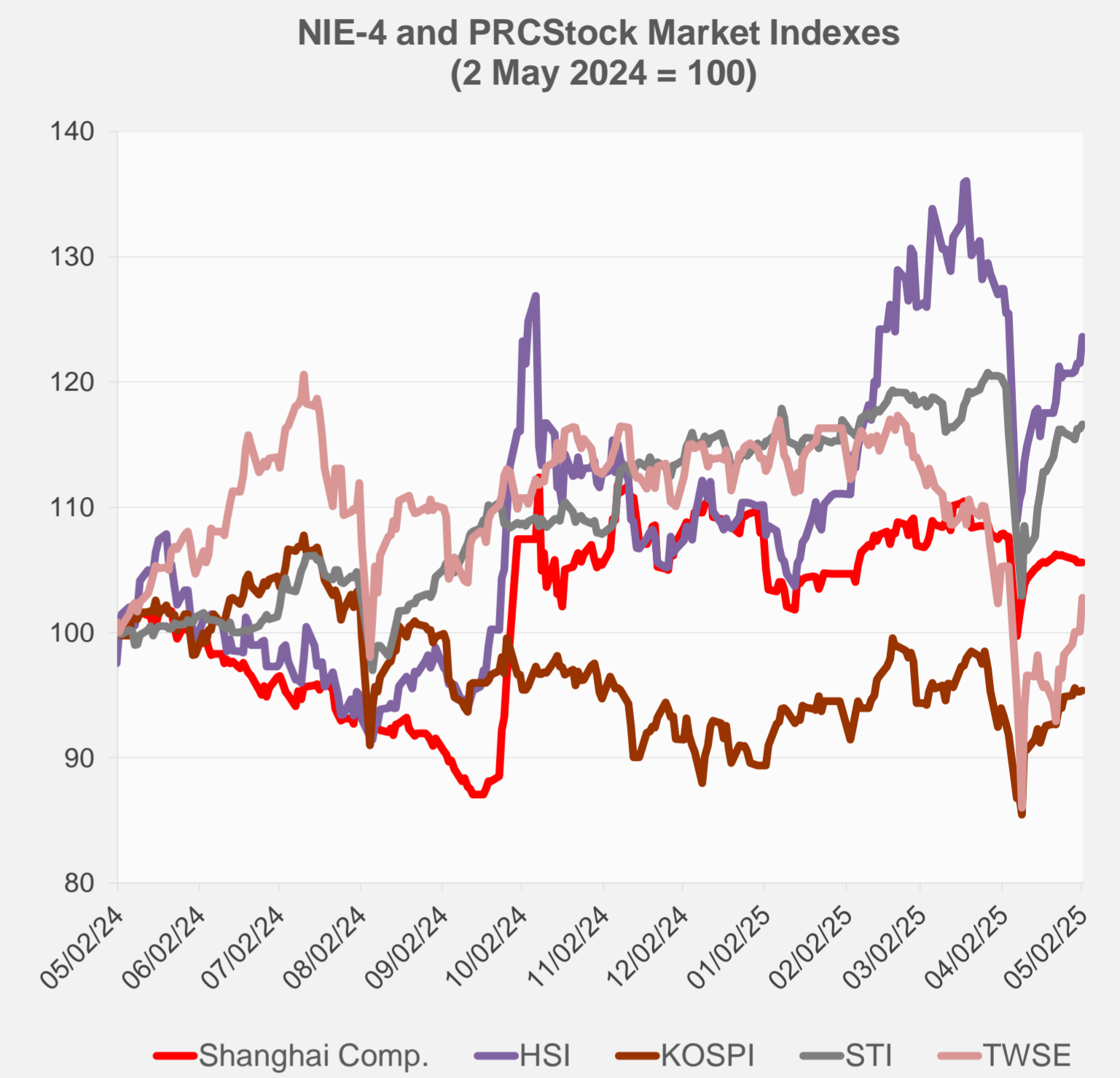
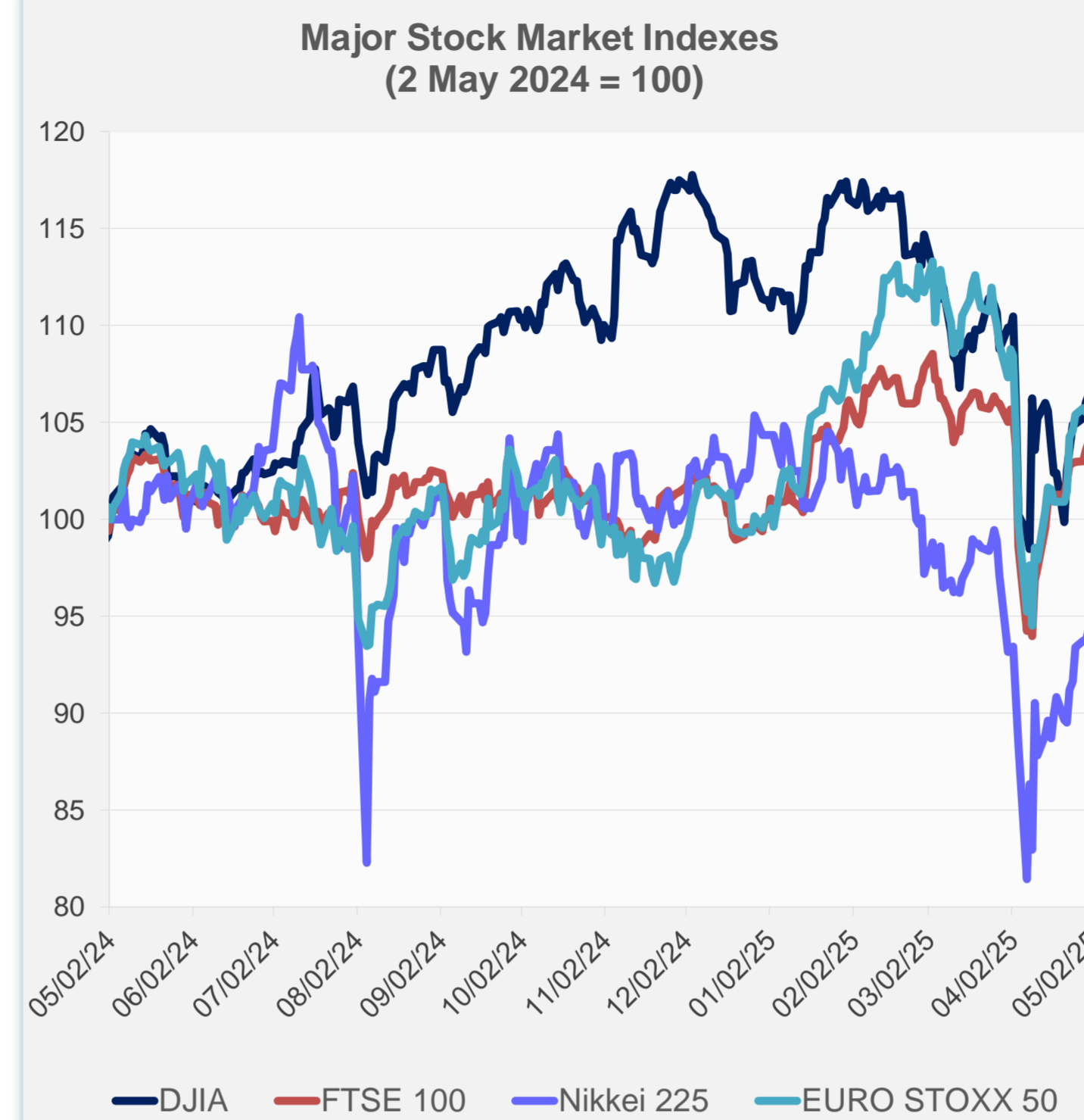
Note: Negative/Decreasing values indicate depreciation of local currency, and positive/increasing values indicate appreciation.
Source: ADB calculations using data from Haver Analytics.



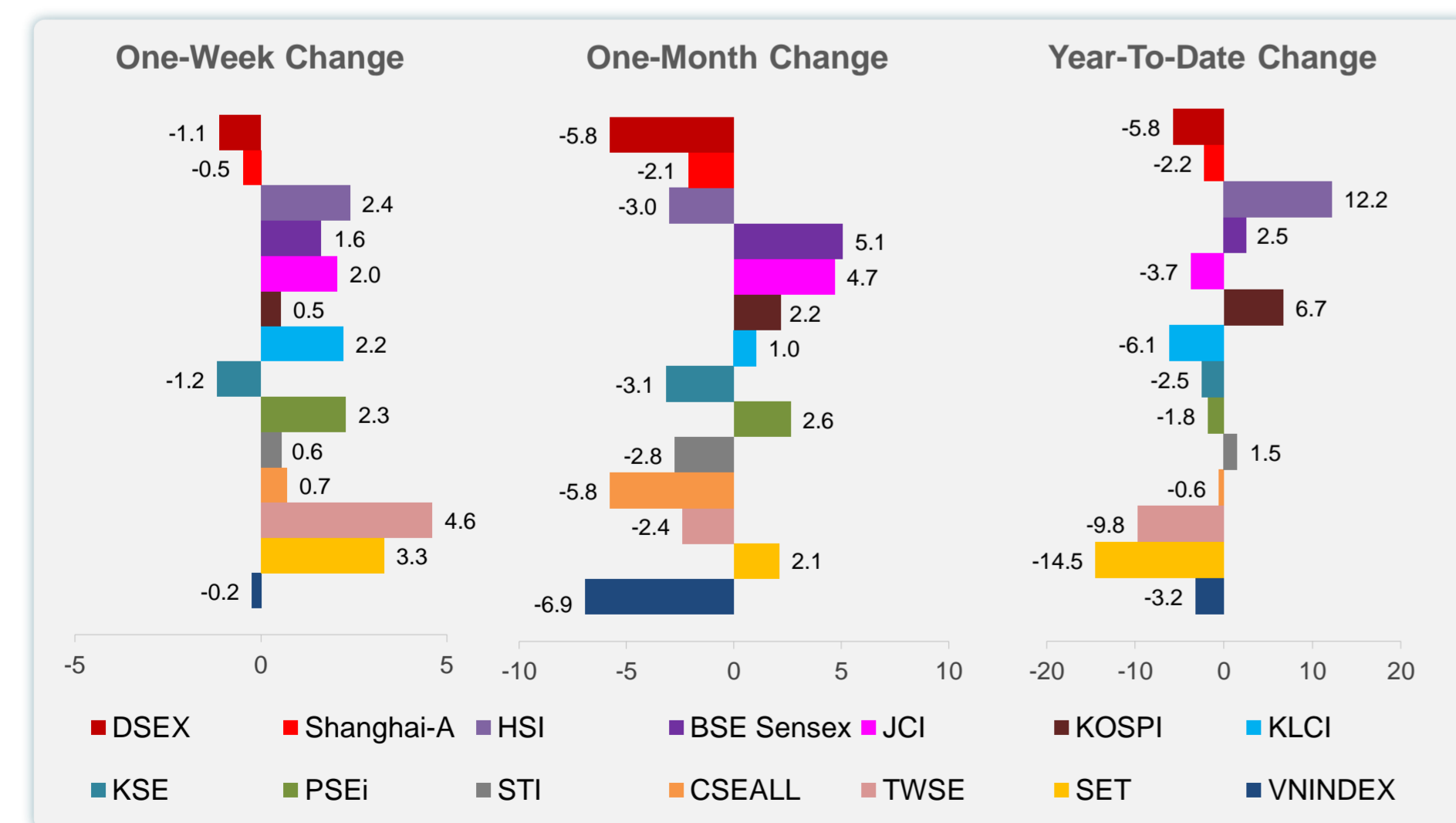
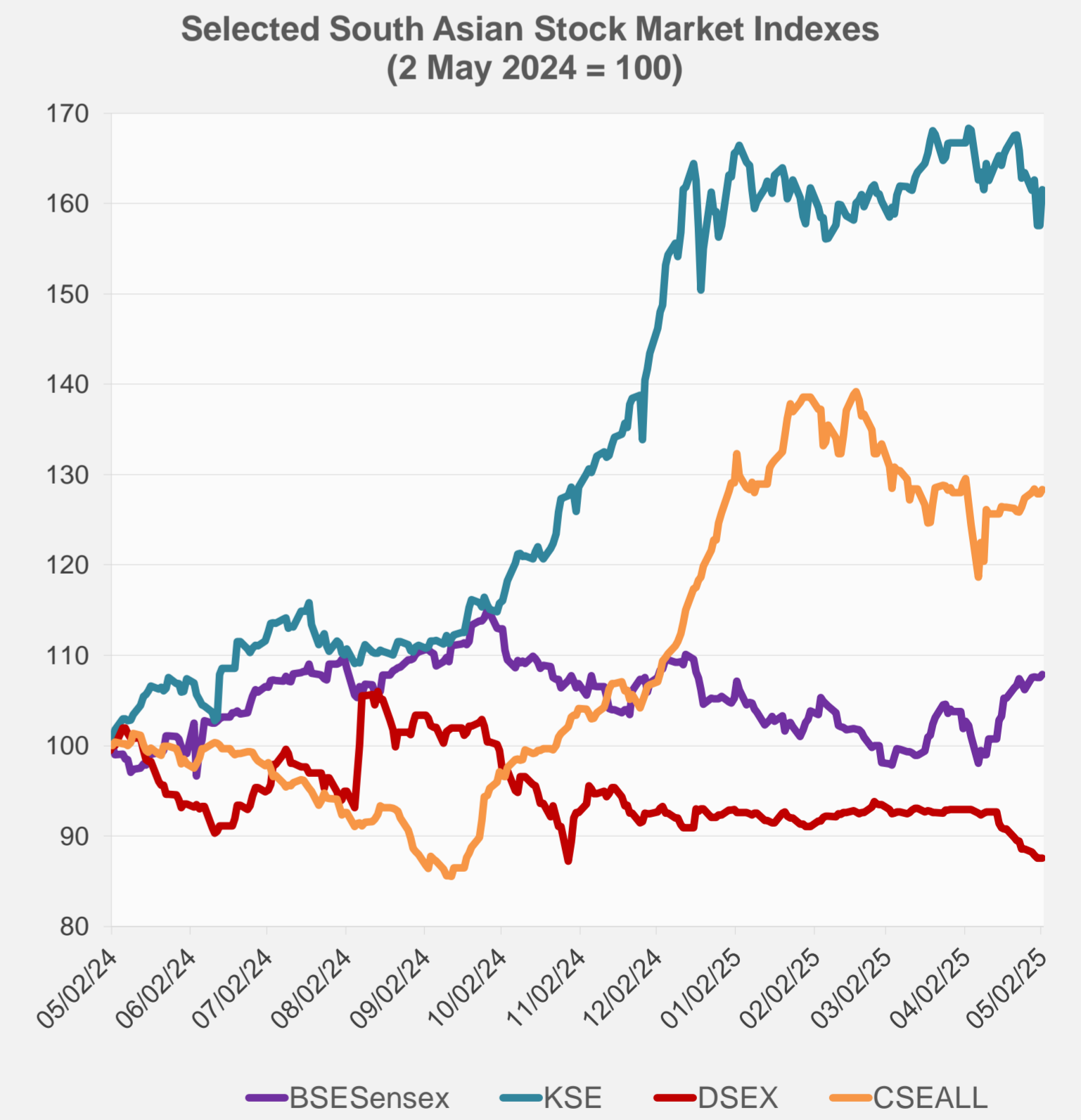
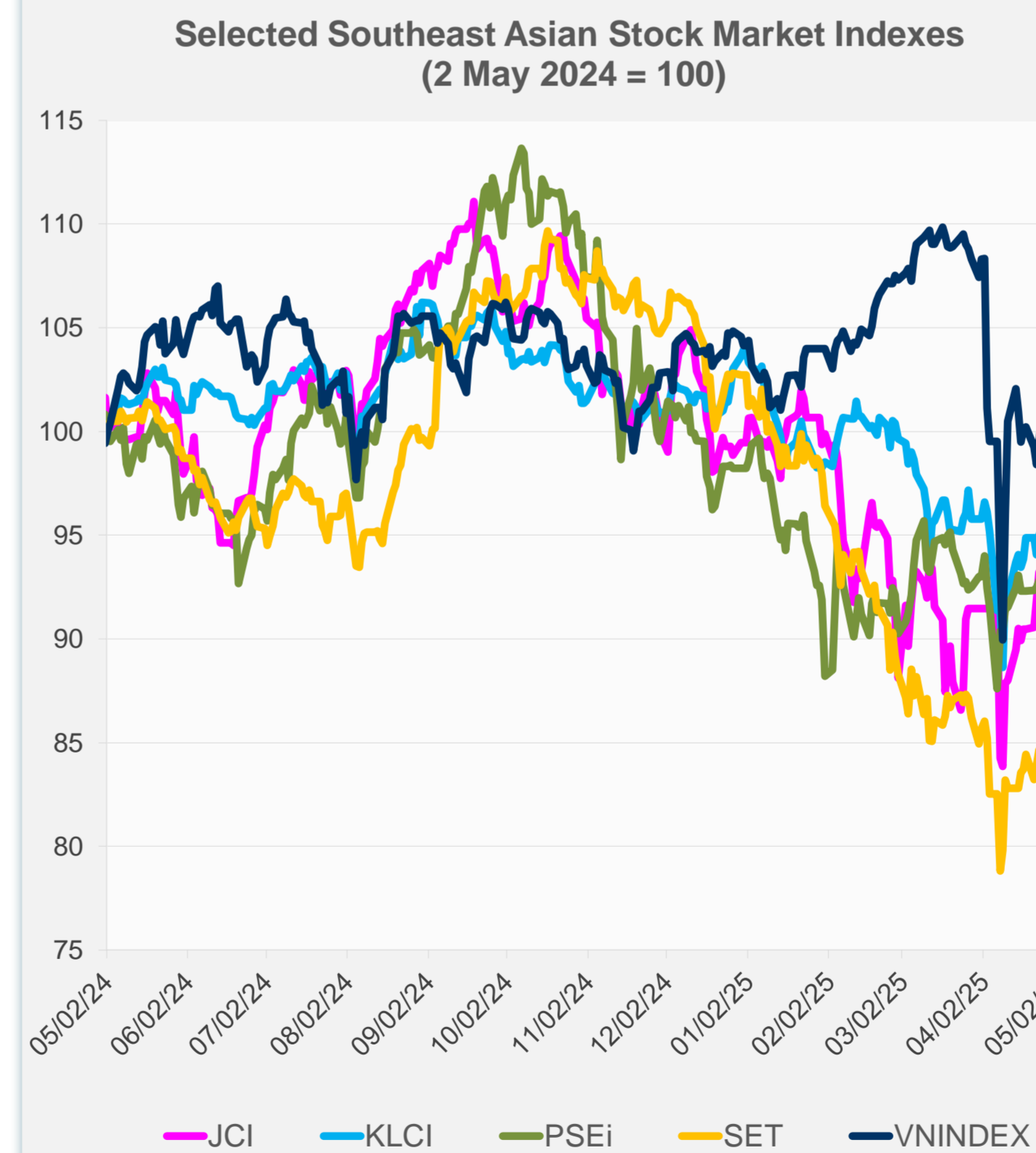
Source: Haver Analytics.

Daily Market Watch
STOCK INDEXES

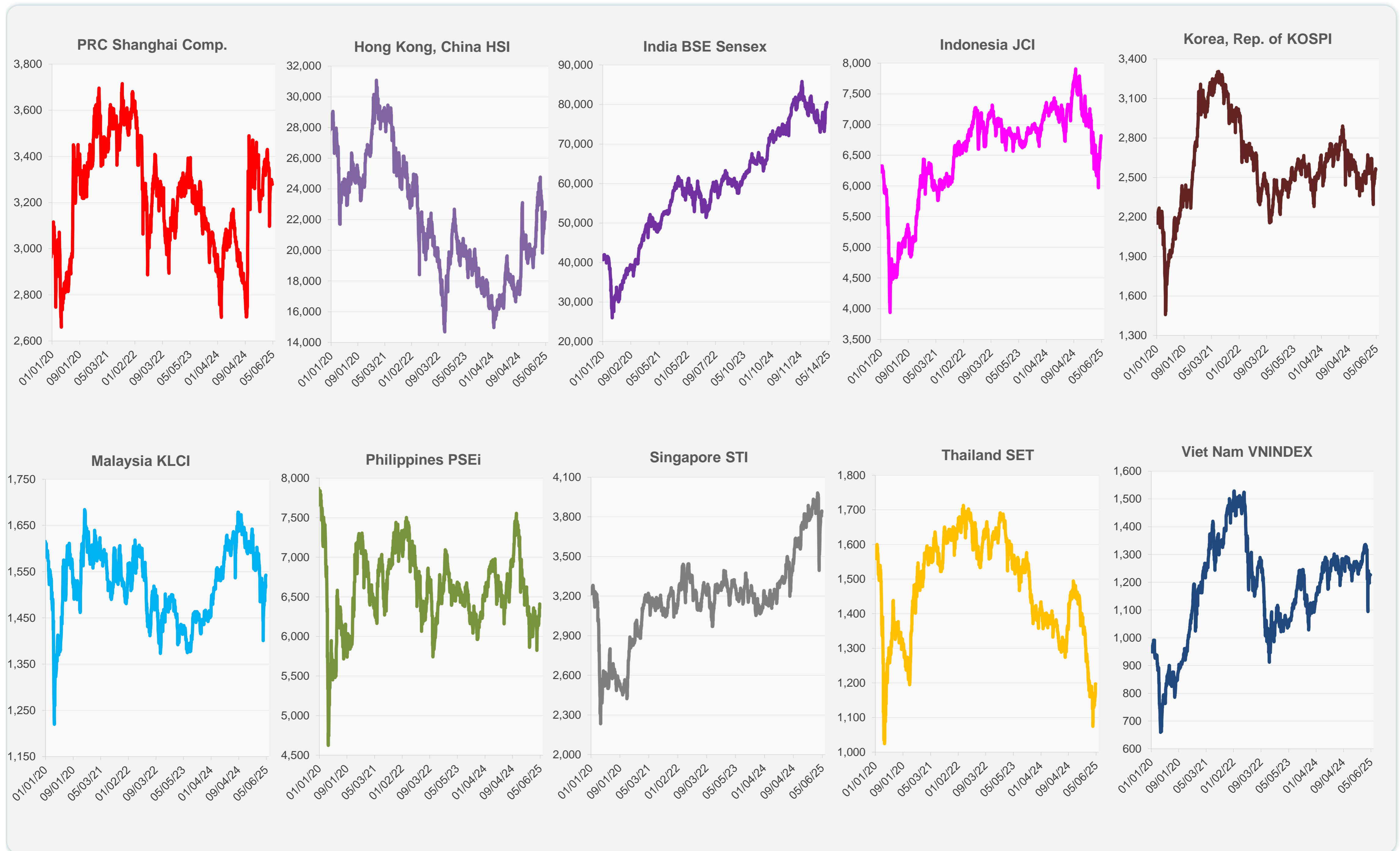
	Latest Closing	% change from Previous Day	% change from 01-Jan-25
US Dow Jones Ind Avg	41,317.43	1.39	-2.88
US NASDAQ	17,977.73	1.51	-6.90
US S&P 500	5,686.67	1.47	-3.31
UK FTSE 100	8,596.35	1.17	5.18
EURO STOXX 50	5,285.19	2.42	7.95
Japan NIKKEI 225	36,830.69	1.04	-7.68
Bangladesh DSEX	4,917.92	0.00	-5.75
PRC Shanghai Comp.	3,279.03	0.00	-2.17
Hong Kong, China HSI	22,504.68	1.74	12.19
India BSE Sensex	80,501.99	0.32	2.54
Indonesia JCI	6,815.73	0.72	-3.73
Korea, Rep. of KOSPI	2,559.79	0.12	6.68
Malaysia KLCI	1,542.49	0.15	-6.08
Pakistan KSE 100	114,113.93	2.50	-2.47
Philippines PSEi	6,411.86	0.89	-1.79
Singapore STI	3,845.14	0.33	1.52
Sri Lanka CSEALL	15,851.74	0.33	-0.58
Taipei, China TWSE	20,787.64	2.73	-9.76
Thailand SET	1,197.26	0.00	-14.49
Viet Nam VNINDEX	1,226.30	0.00	-3.20



NIE = Newly Industrialized Economies



Sources: ADB calculations using data from CEIC Data Company and Haver Analytics.

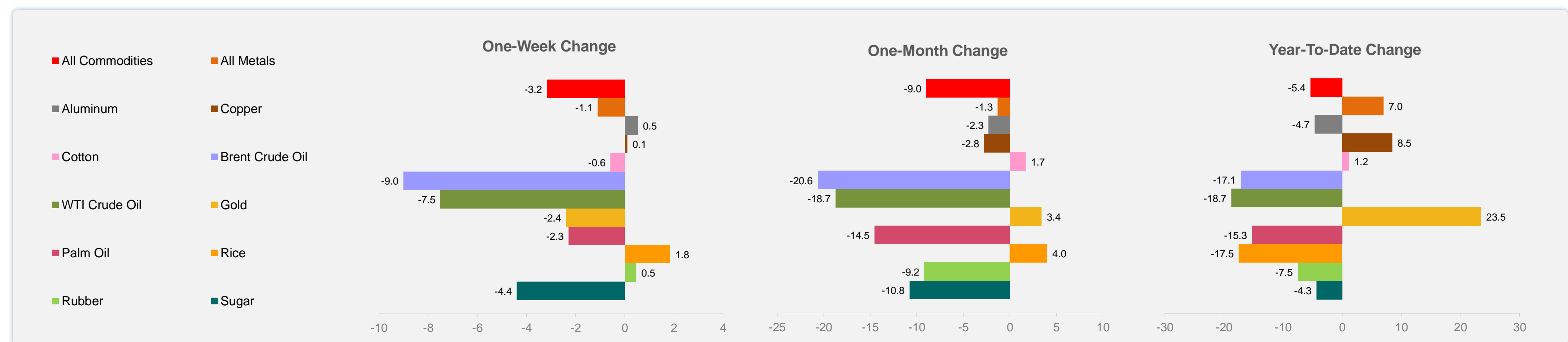
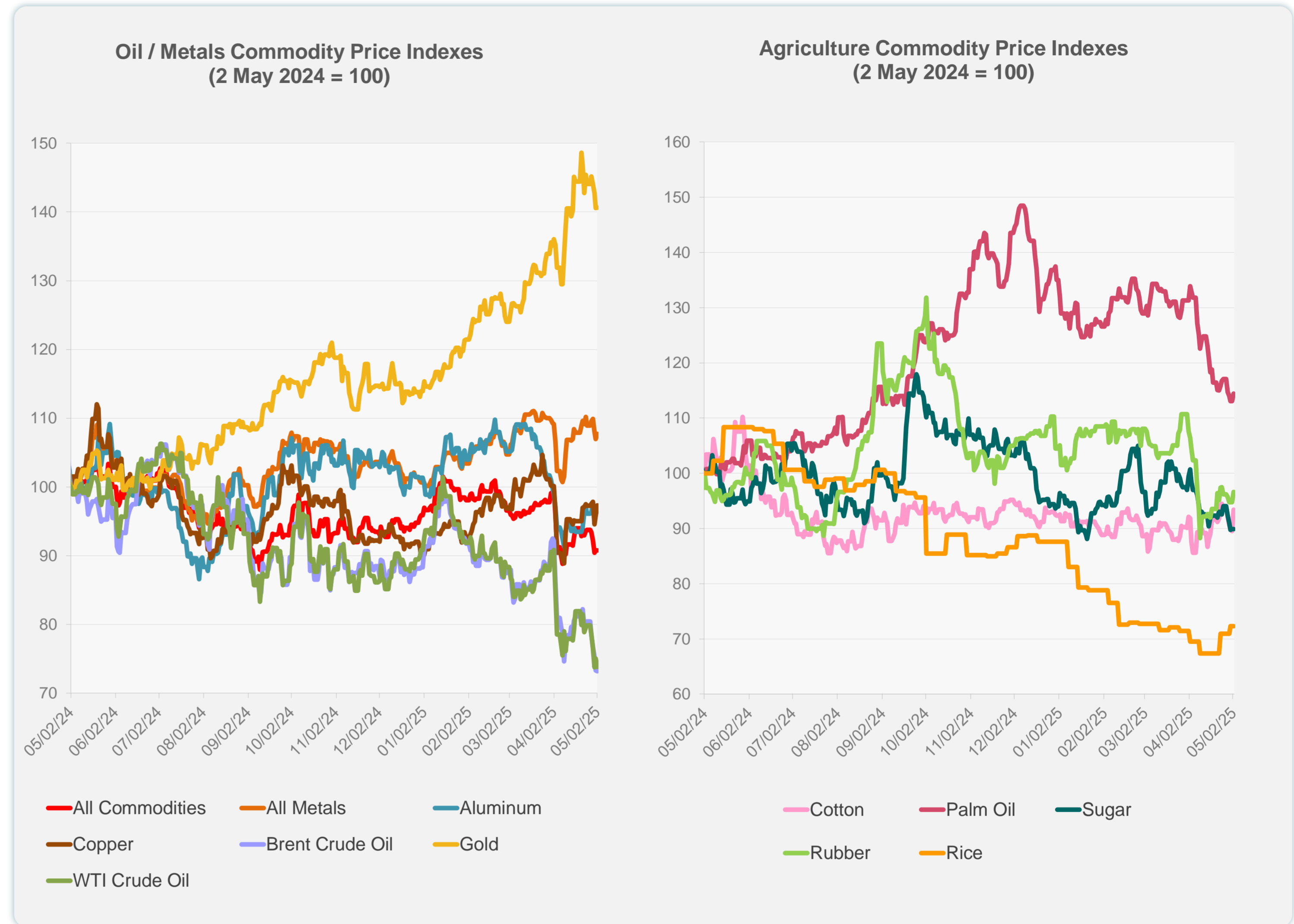


Sources: CEIC Data Company and Haver Analytics.

Daily Market Watch
COMMODITY PRICES

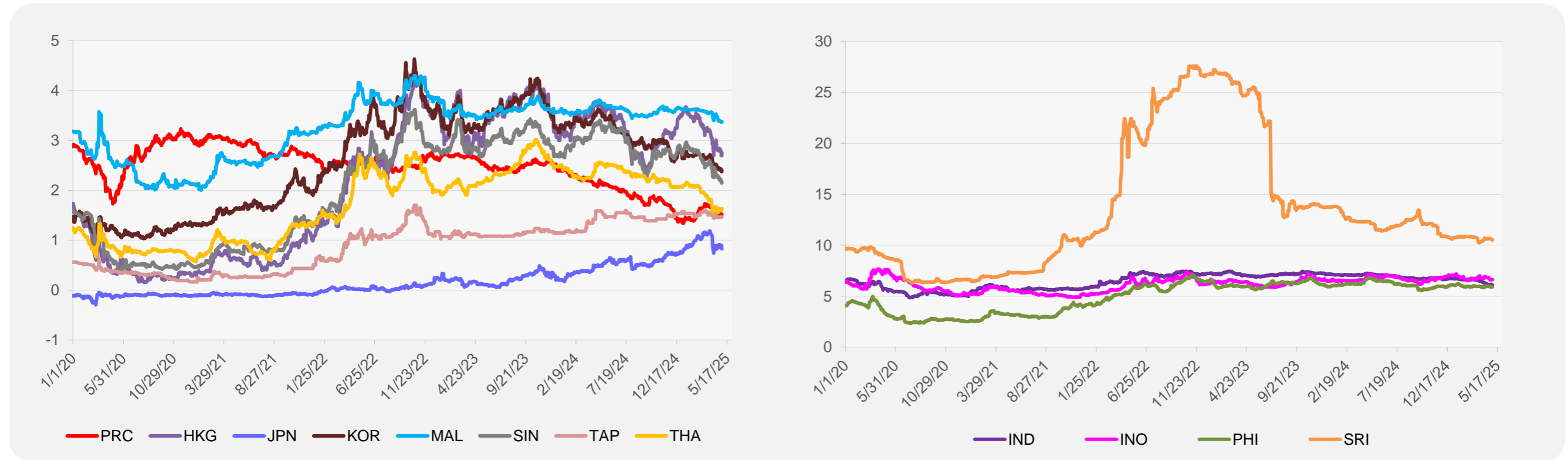
	Unit	Latest Closing	% change from Previous Day	% change from 01-Jan-25
S&P All Commodities	US\$	520.18	-0.02	-5.36
S&P All Metals	US\$	328.89	0.70	7.00
Aluminum	US\$/metric ton	2,408.82	0.57	-4.67
Copper	US\$/metric ton	9,385.73	1.58	8.47
Cotton	US cents/lb	66.66	4.30	1.15
Brent Crude Oil	US\$/barrel	61.41	-0.19	-17.14
WTI Crude Oil	US\$/barrel	58.29	-1.60	-18.73
Gold	US\$/troy oz	3,240.49	0.04	23.47
Palm Oil	US\$/metric tonne	932.16	1.22	-15.27
Rice ¹	US\$/metric ton	443.00	0.00	-17.50
Rubber ²	US\$/kg	219.00	1.91	-7.52
Sugar	US cents/lb	17.41	0.00	-4.34

¹ Latest closing price from 30 April 2025.
² Singapore Exchange, Ribbed Smoked Sheet Rubber.

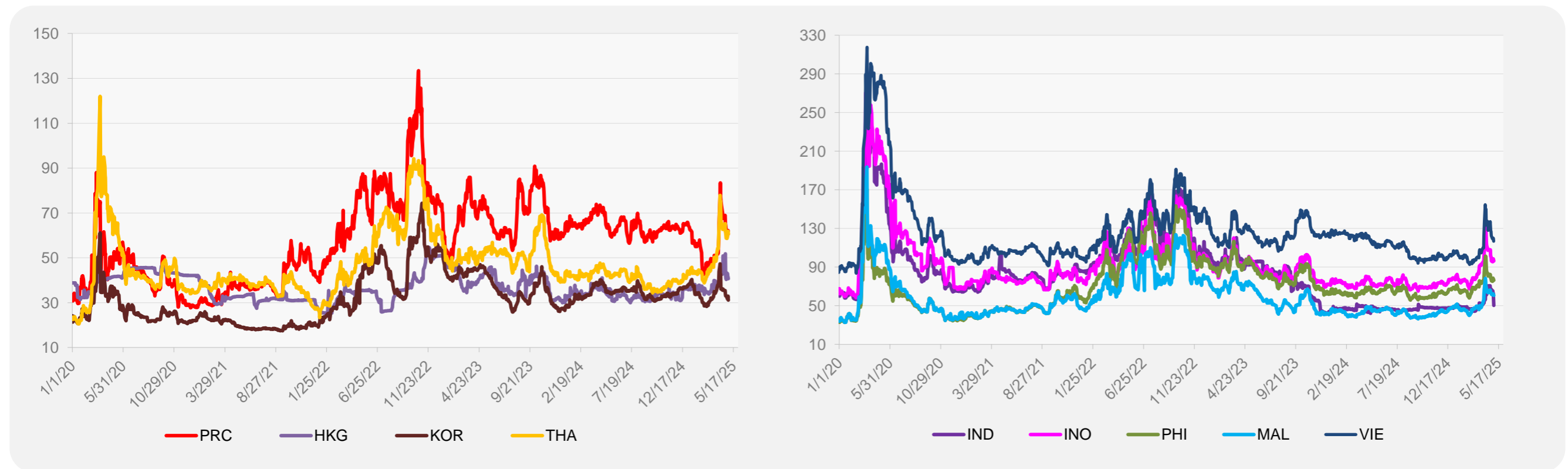


Source: ADB calculations using data from Bloomberg.

5-YEAR LOCAL CURRENCY GOVERNMENT BOND YIELDS (%)



5-YEAR CREDIT DEFAULT SWAP¹



¹ In USD and based on sovereign bonds.
Source: ADB calculations using data from Bloomberg.