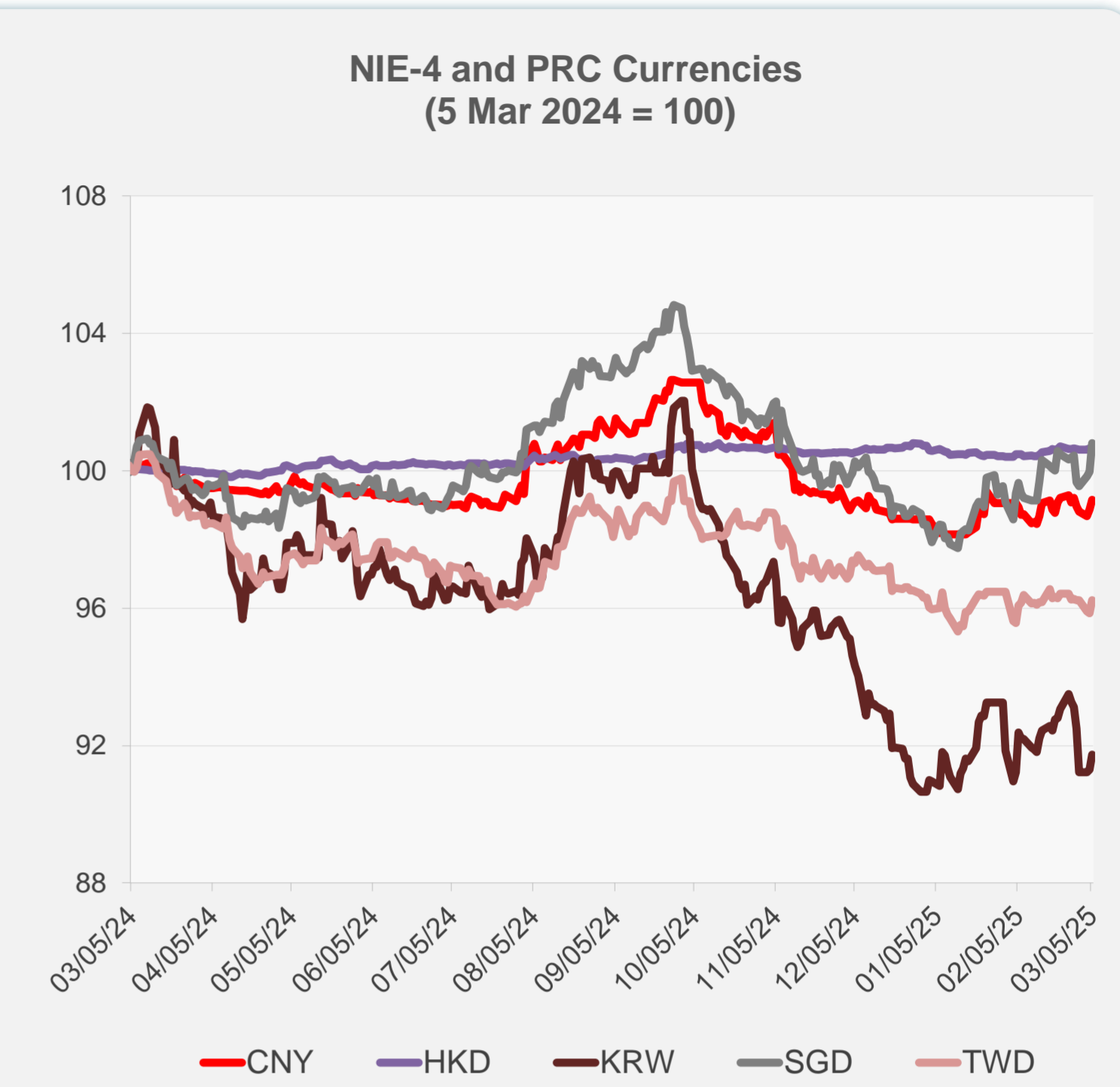
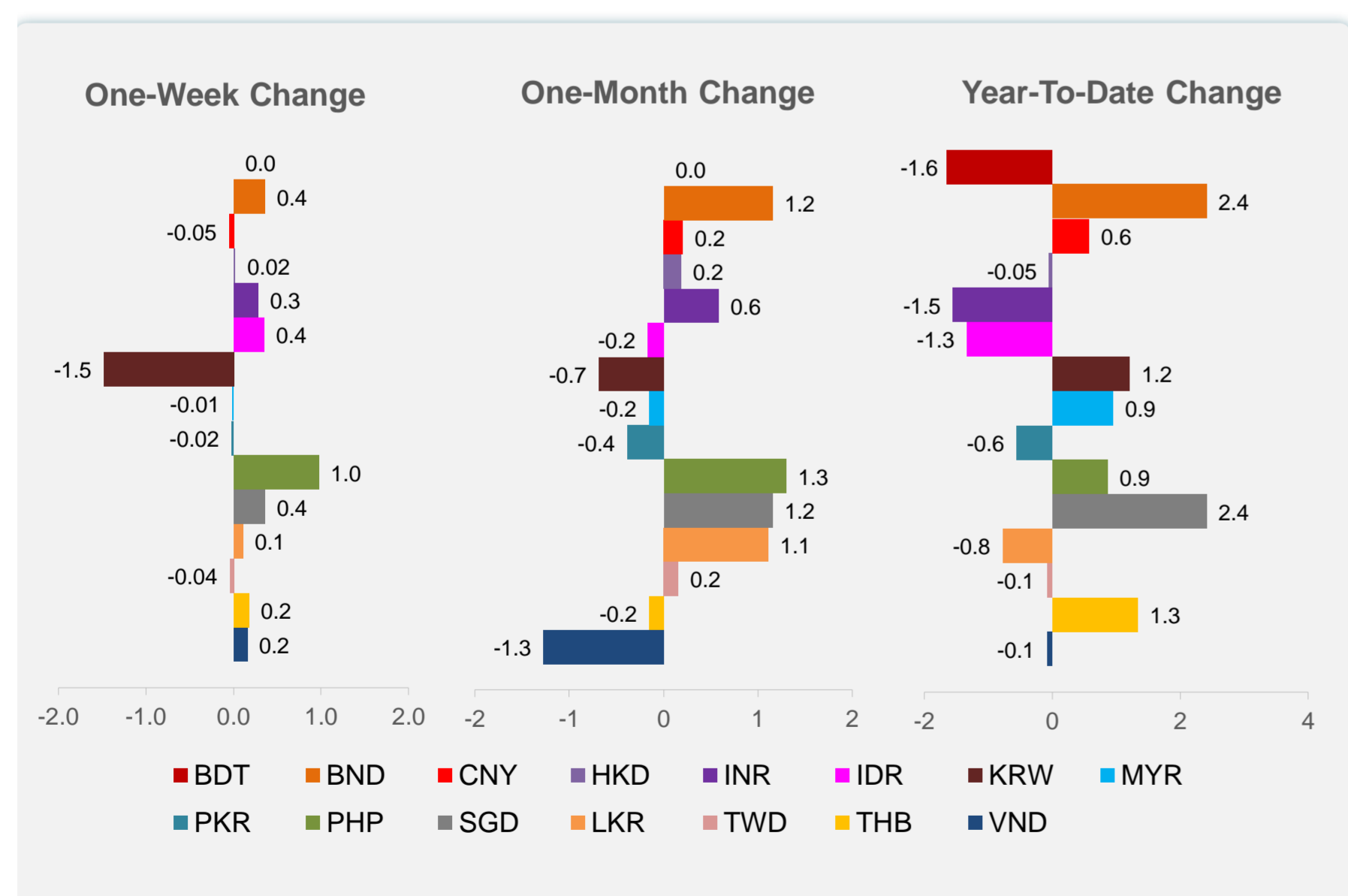
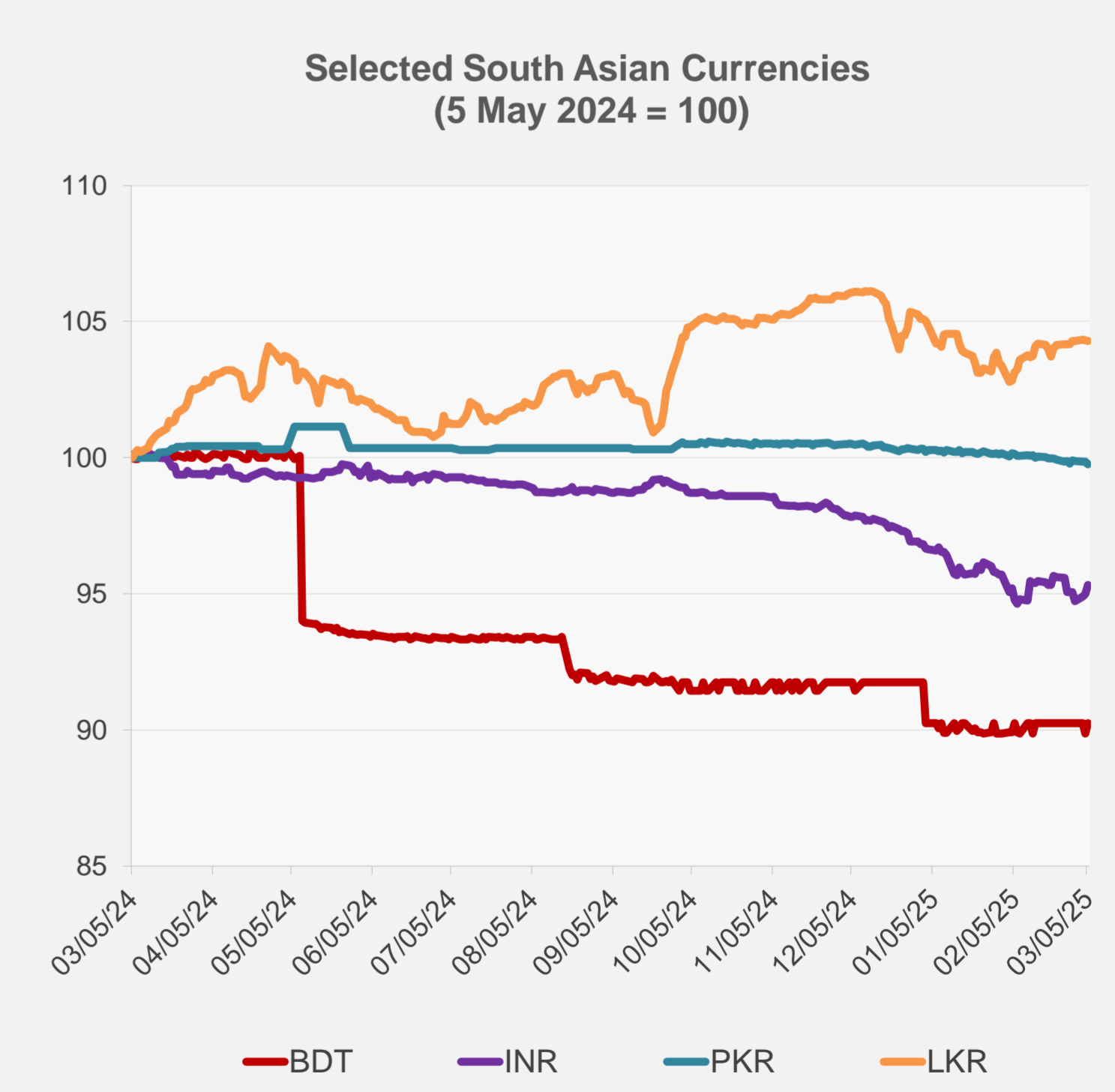
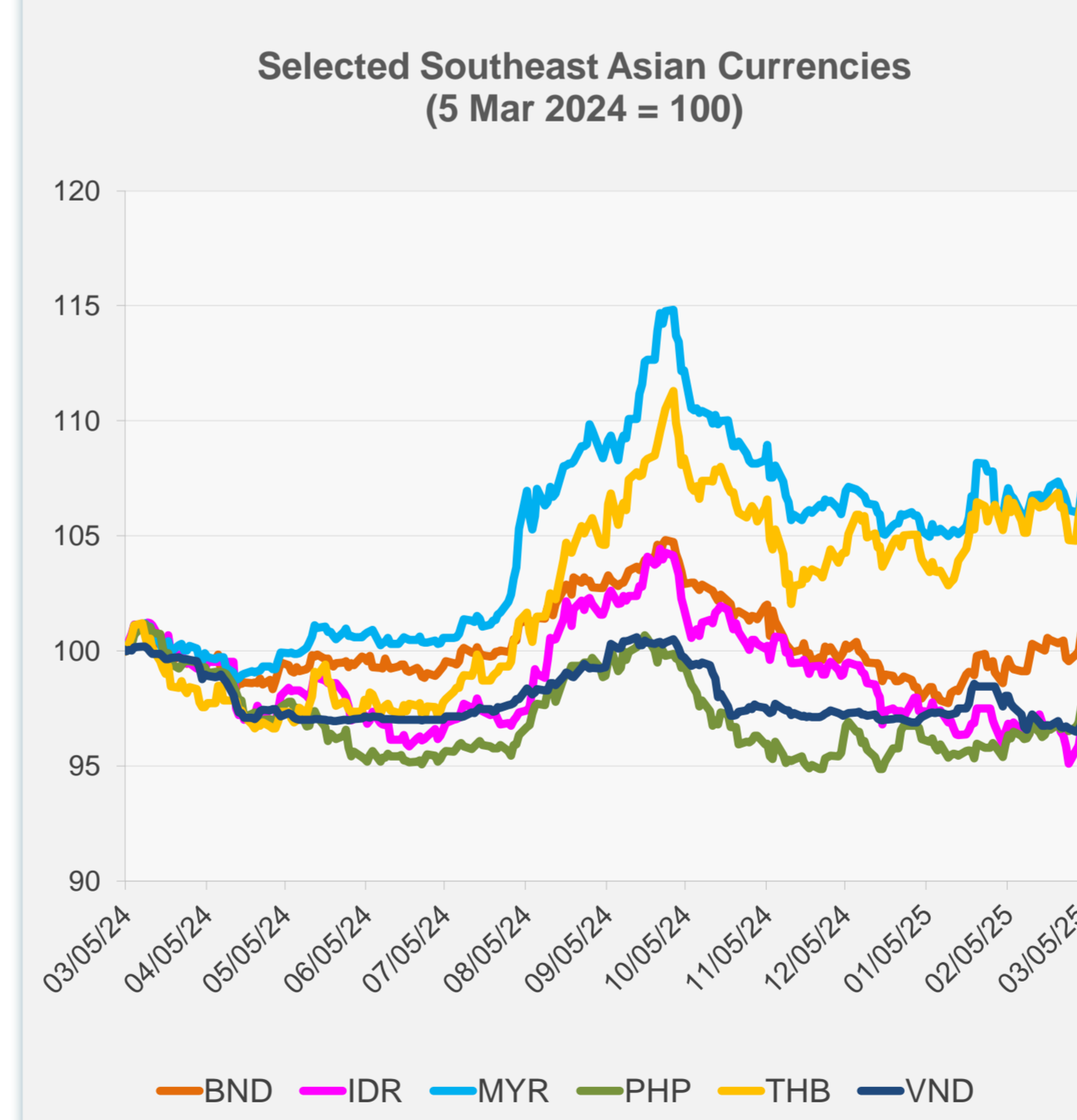


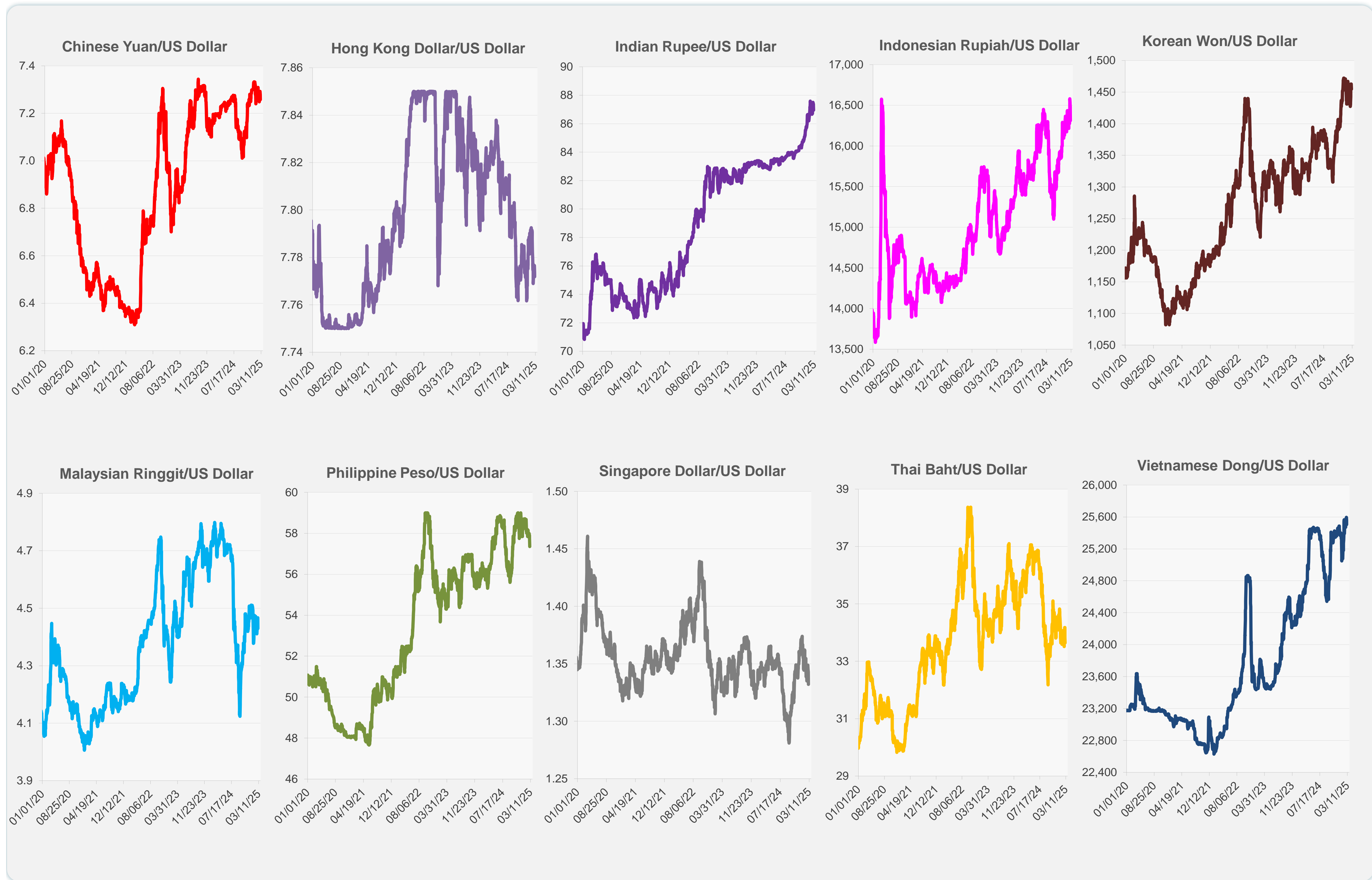
	Latest Closing	% change from Previous Day	% change from 01-Jan-25
Euro	0.93	2.25	3.95
Japanese yen (JPY)	148.91	-0.39	5.54
Bangladeshi taka (BDT)	121.50	0.41	-1.65
Brunei dollar (BND)	1.33	0.83	2.41
Chinese yuan (CNY)	7.26	0.30	0.57
Hong Kong dollar (HKD)	7.77	0.02	-0.05
Indian rupee (INR)	86.96	0.36	-1.55
Indonesian rupiah (IDR)	16,312.50	0.81	-1.33
Korean won (KRW)	1,454.60	0.49	1.21
Malaysian ringgit (MYR)	4.43	0.84	0.95
Pakistan rupee (PKR)	279.93	-0.08	-0.55
Philippine peso (PHP)	57.35	0.72	0.86
Singapore dollar (SGD)	1.33	0.83	2.41
Sri Lanka rupee (LKR)	295.28	-0.03	-0.77
Taipei,China NT dollar (TWD)	32.81	0.39	-0.08
Thai baht (THB)	33.65	0.56	1.34
Vietnamese dong (VND)	25,505.00	0.22	-0.08



NIE = Newly Industrialized Economies



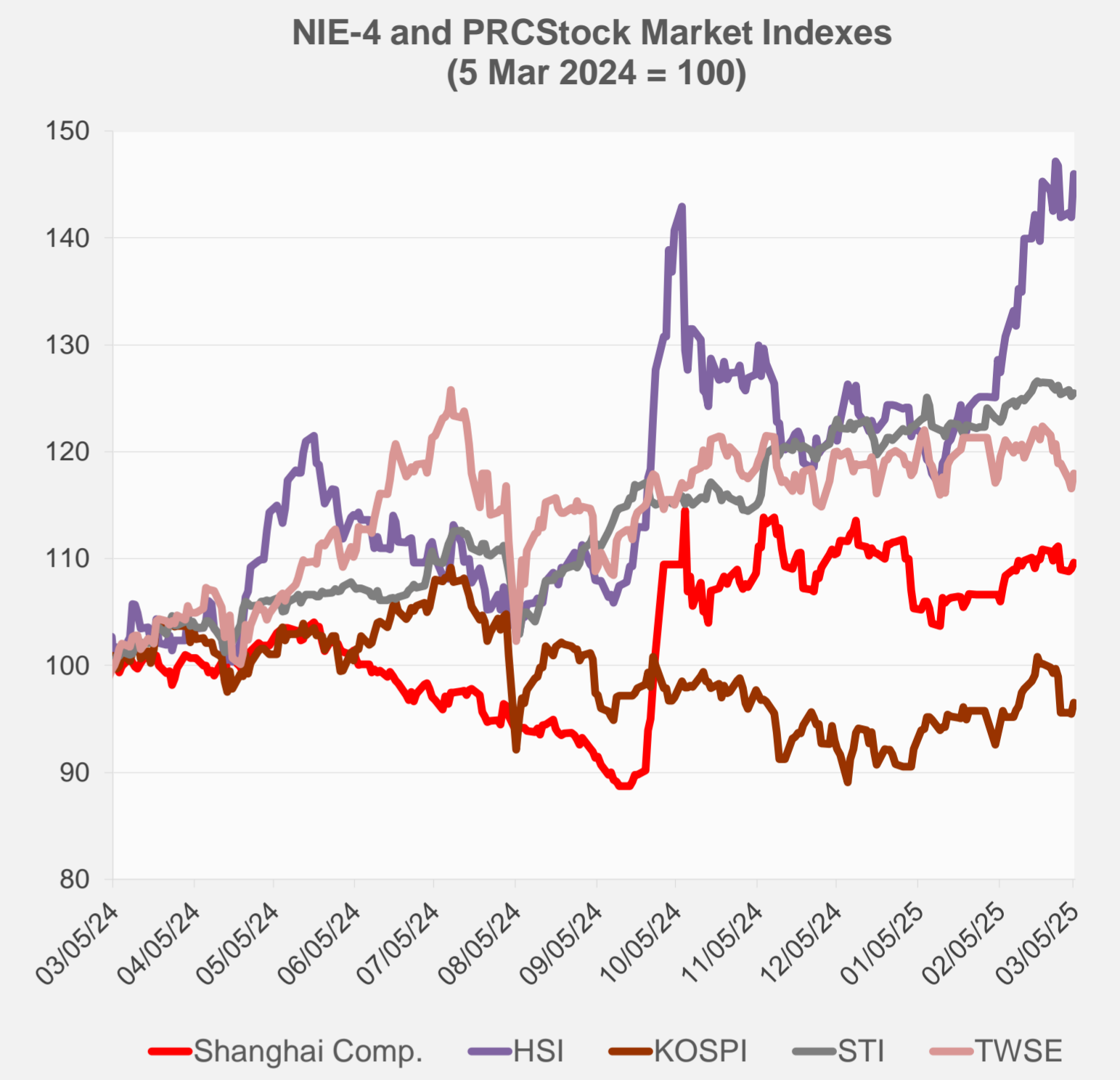
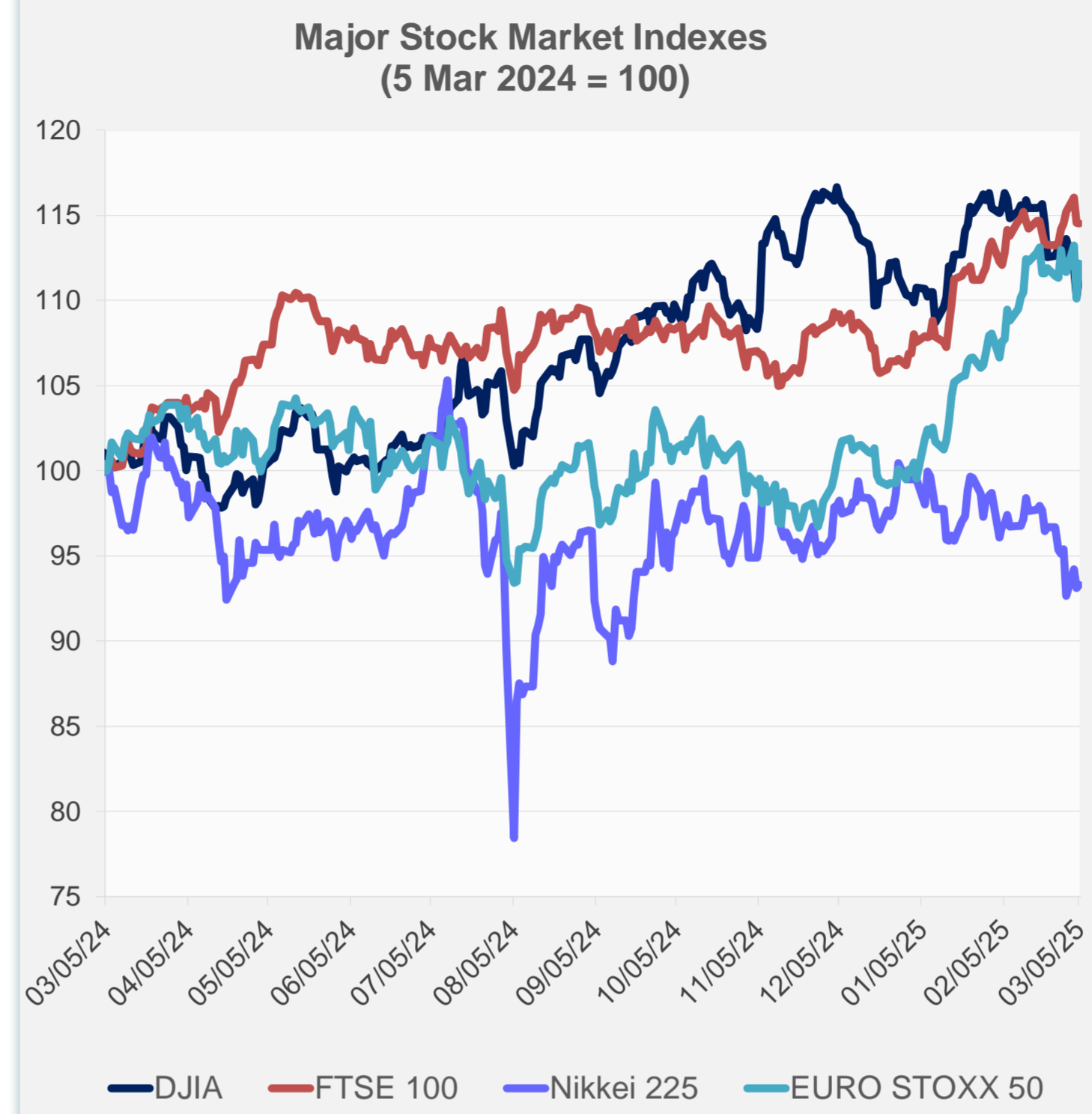
Note: Negative/Decreasing values indicate depreciation of local currency, and positive/increasing values indicate appreciation.
Source: ADB calculations using data from Haver Analytics.



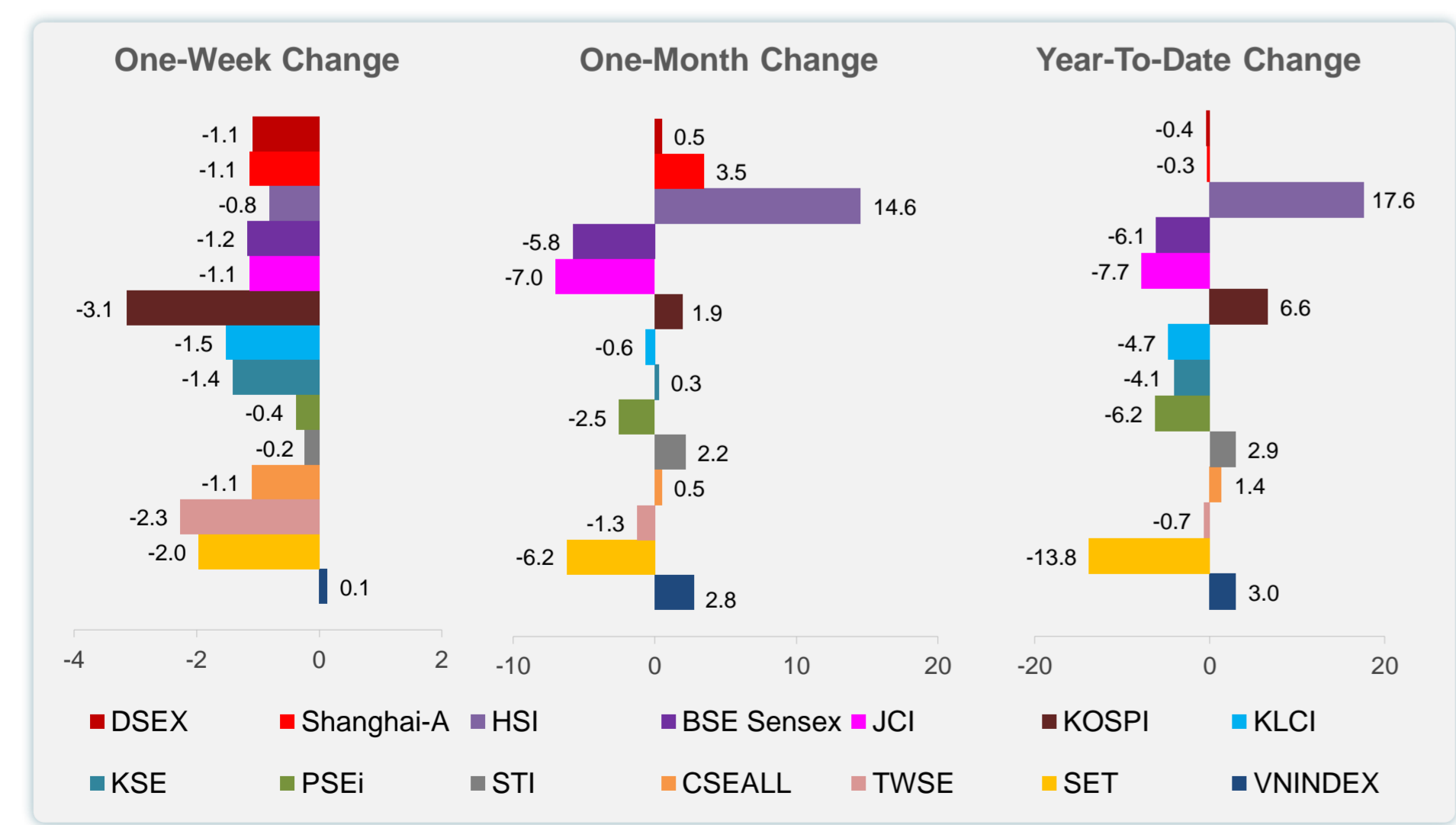
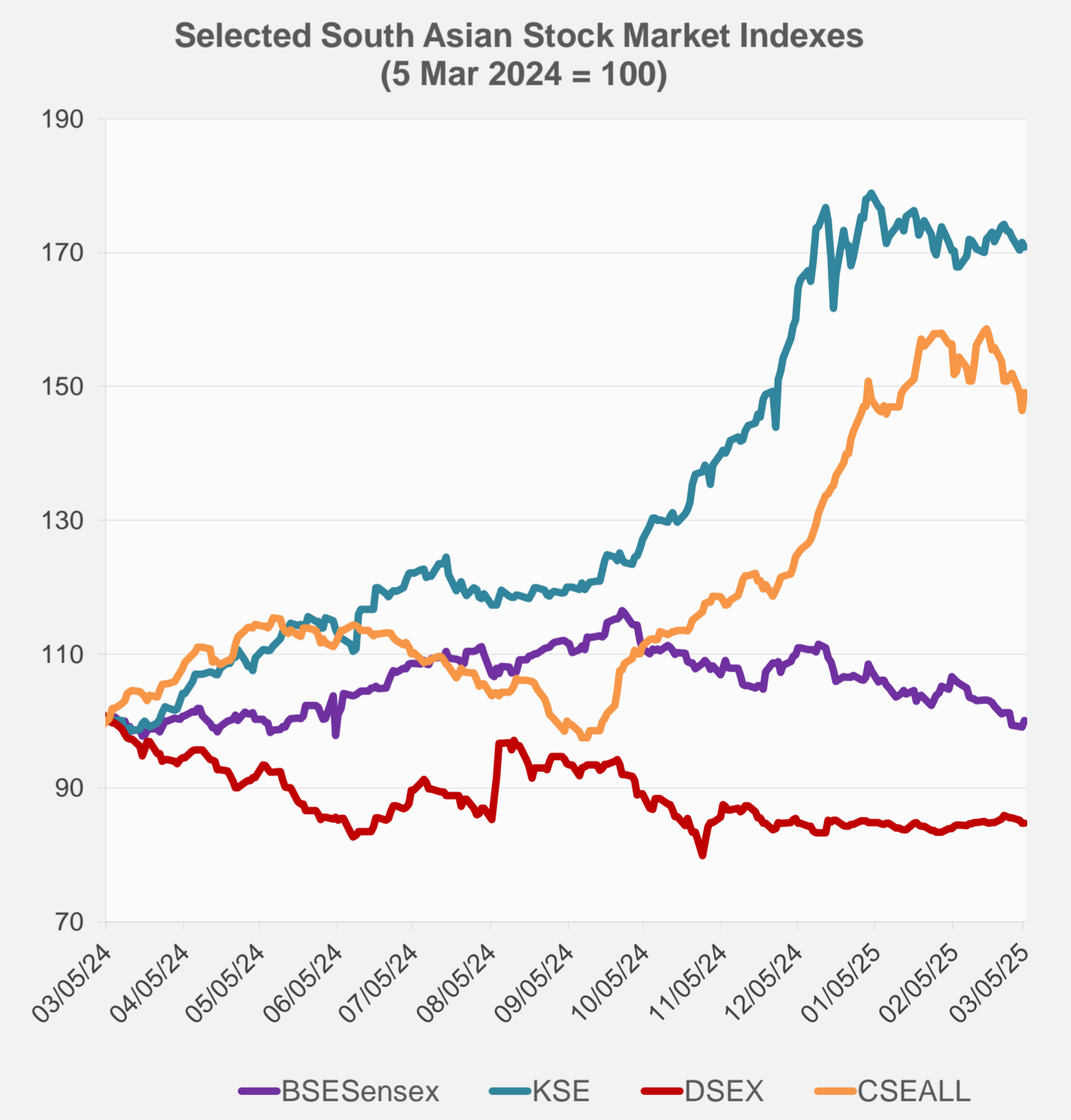
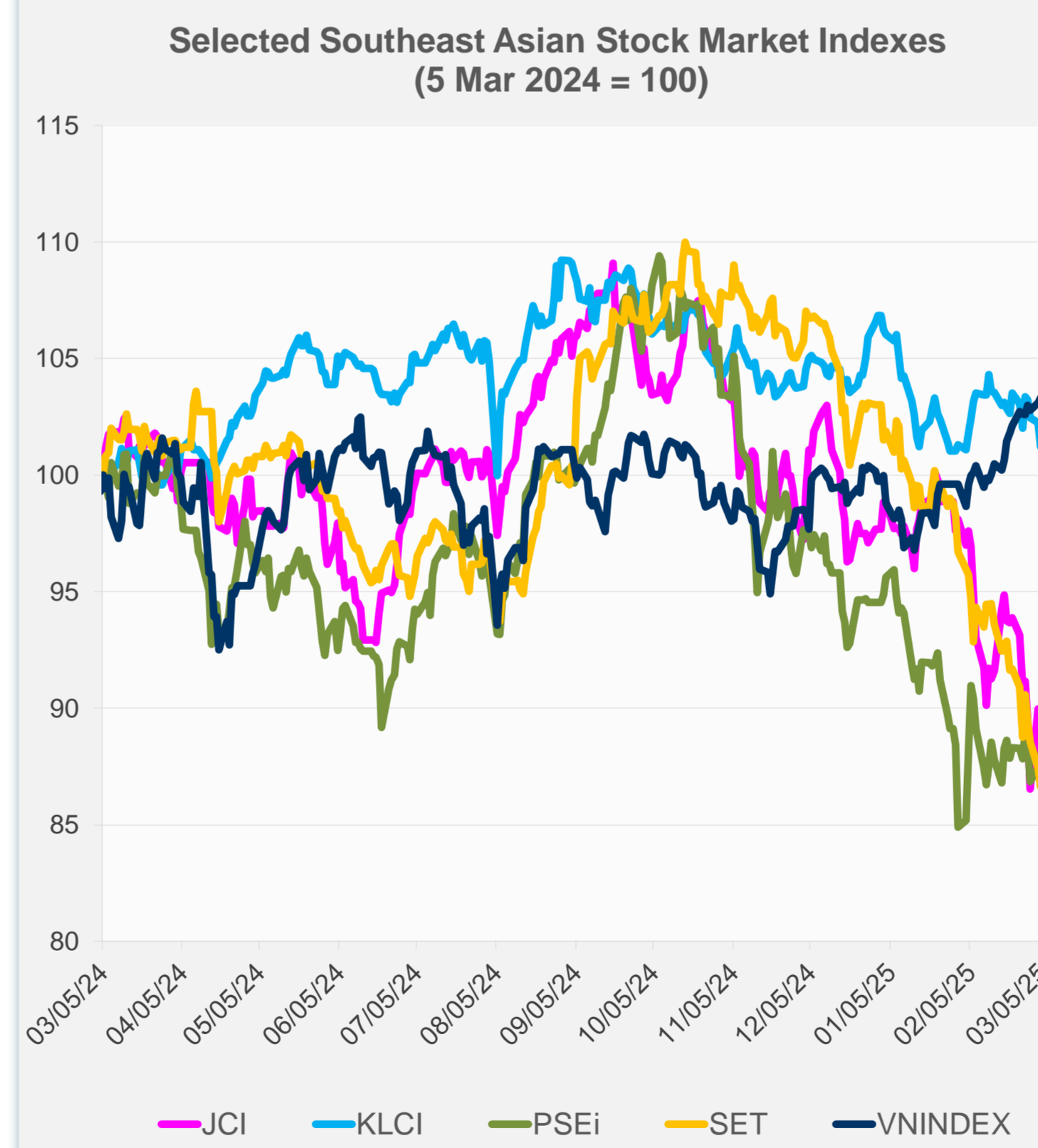
Source: Haver Analytics.

Daily Market Watch
STOCK INDEXES

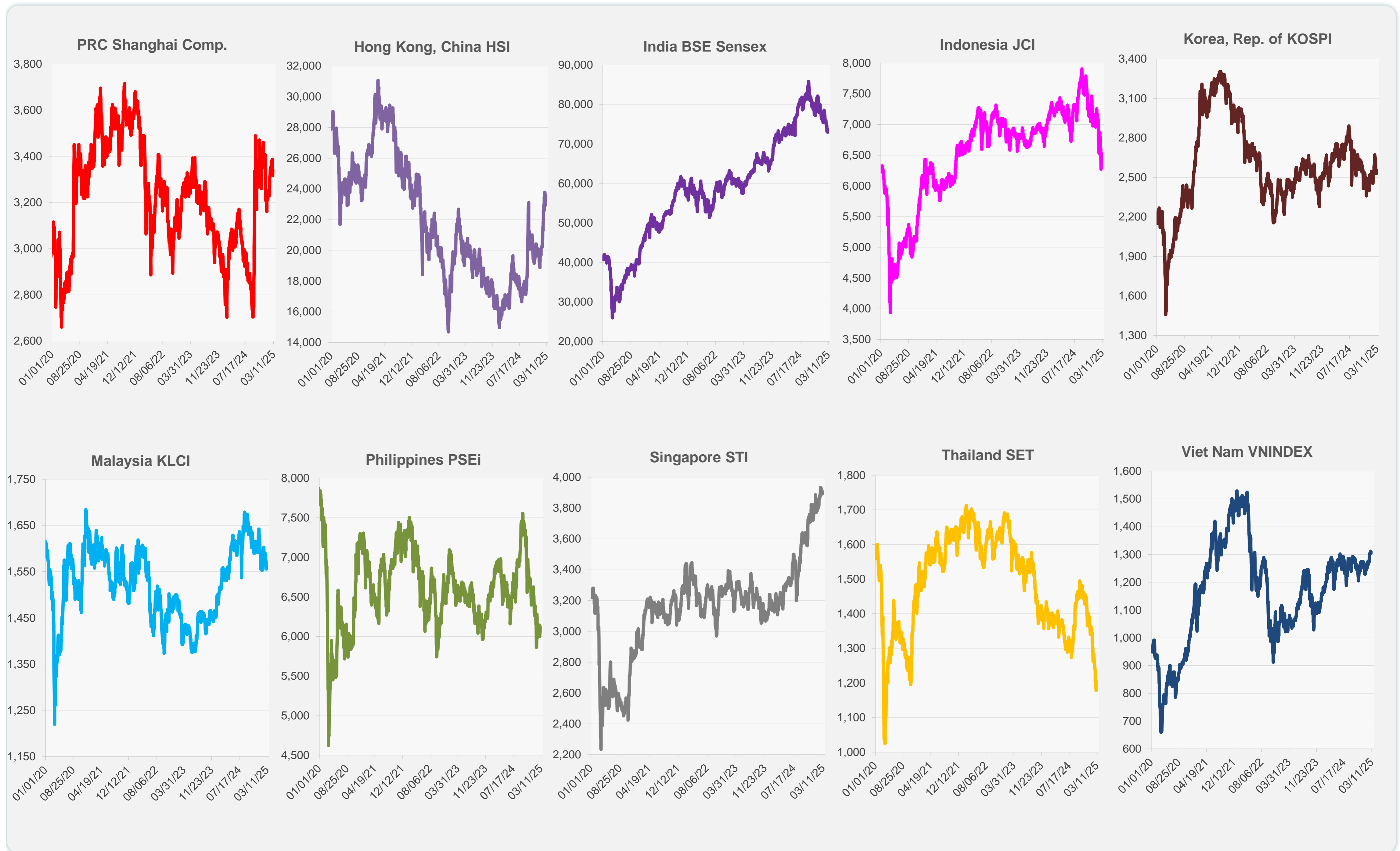
	Latest Closing	% change from Previous Day	% change from 01-Jan-25
US Dow Jones Ind Avg	43,006.59	1.14	1.09
US NASDAQ	18,552.73	1.46	-3.93
US S&P 500	5,842.63	1.12	-0.66
UK FTSE 100	8,755.84	-0.04	7.13
EURO STOXX 50	5,489.12	1.89	12.11
Japan NIKKEI 225	37,418.24	0.23	-6.21
Bangladesh DSEX	5,196.66	0.05	-0.41
PRC Shanghai Comp.	3,341.96	0.53	-0.29
Hong Kong, China HSI	23,594.21	2.84	17.62
India BSE Sensex	73,730.23	1.01	-6.09
Indonesia JCI	6,531.40	2.37	-7.75
Korea, Rep. of KOSPI	2,558.13	1.16	6.61
Malaysia KLCI	1,564.42	0.56	-4.74
Pakistan KSE 100	112,253.76	-0.43	-4.06
Philippines PSEi	6,121.77	0.95	-6.23
Singapore STI	3,898.40	0.20	2.93
Sri Lanka CSEALL	16,166.53	1.87	1.39
Taipei, China TWSE	22,871.90	1.22	-0.71
Thailand SET	1,206.96	2.49	-13.80
Viet Nam VNINDEX	1,304.71	-0.55	2.99



NIE = Newly Industrialized Economies



Sources: ADB calculations using data from CEIC Data Company and Haver Analytics.

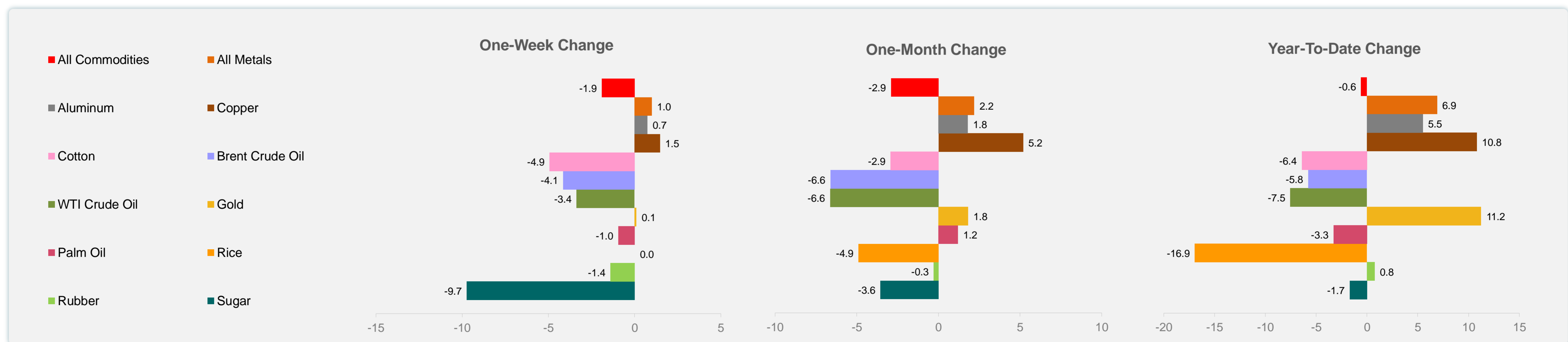
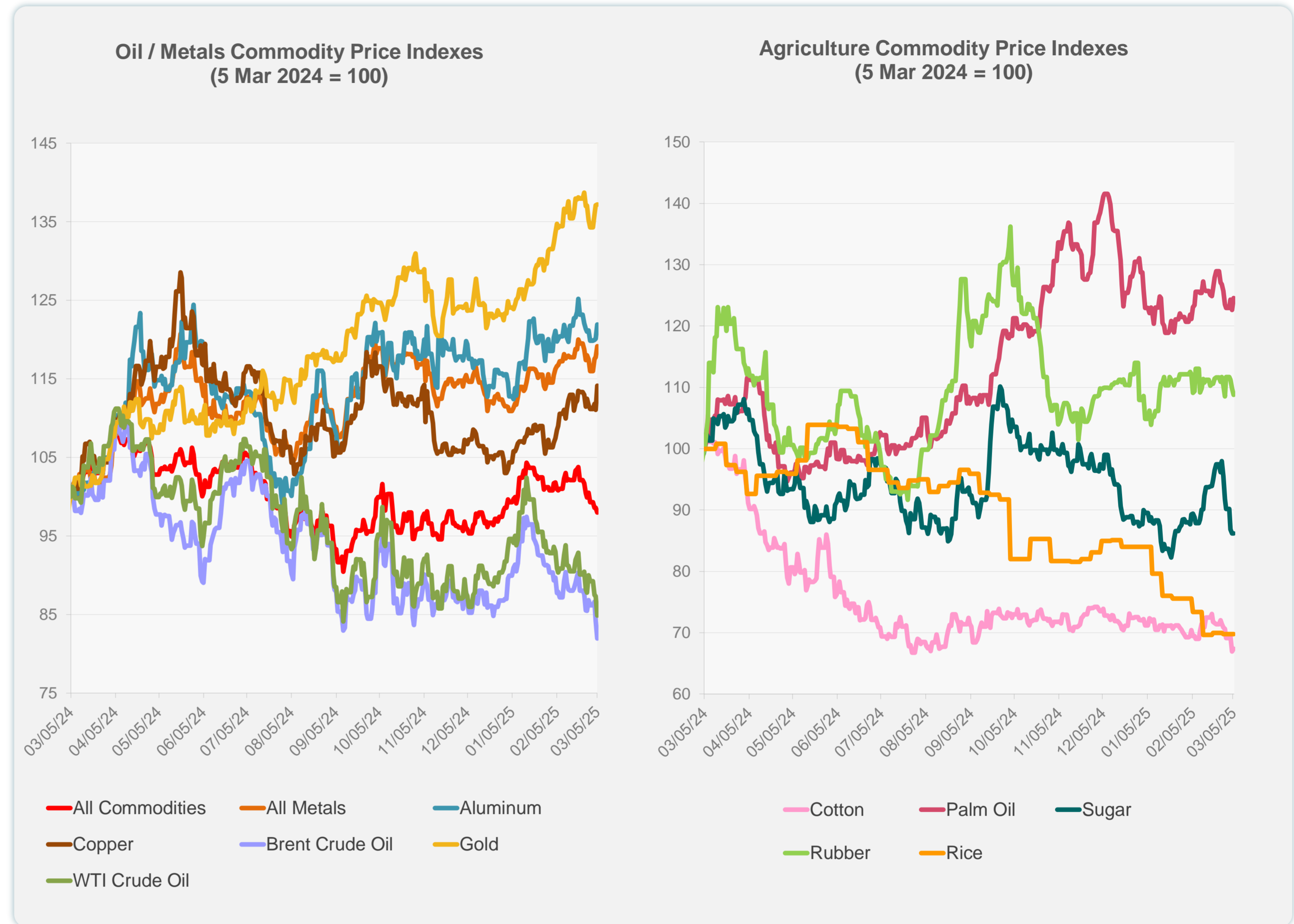


Sources: CEIC Data Company and Haver Analytics.

	Unit	Latest Closing	% change from Previous Day	% change from 01-Jan-25
S&P All Commodities	US\$	546.46	-0.58	-0.58
S&P All Metals	US\$	328.58	1.22	6.90
Aluminum	US\$/metric ton	2,665.88	1.50	5.51
Copper	US\$/metric ton	9,586.92	2.77	10.80
Cotton	US cents/lb	61.67	0.70	-6.42
Brent Crude Oil	US\$/barrel	69.82	-2.69	-5.79
WTI Crude Oil	US\$/barrel	66.31	-2.86	-7.54
Gold	US\$/troy oz	2,919.39	0.05	11.24
Palm Oil	US\$/metric tonne	1,063.89	1.56	-3.29
Rice ¹	US\$/metric ton	446.00	0.00	-16.95
Rubber ²	US\$/kg	238.60	-0.95	0.76
Sugar	US cents/lb	17.89	0.00	-1.70

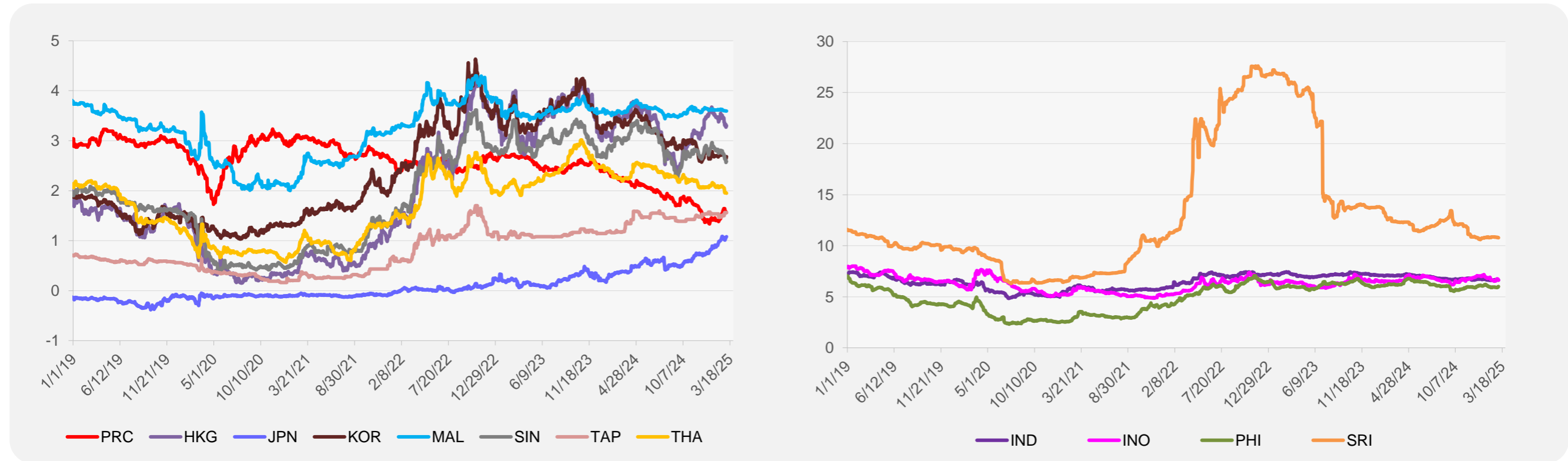
¹ Latest closing price from 26 February 2025.

² Singapore Exchange, Ribbed Smoked Sheet Rubber.

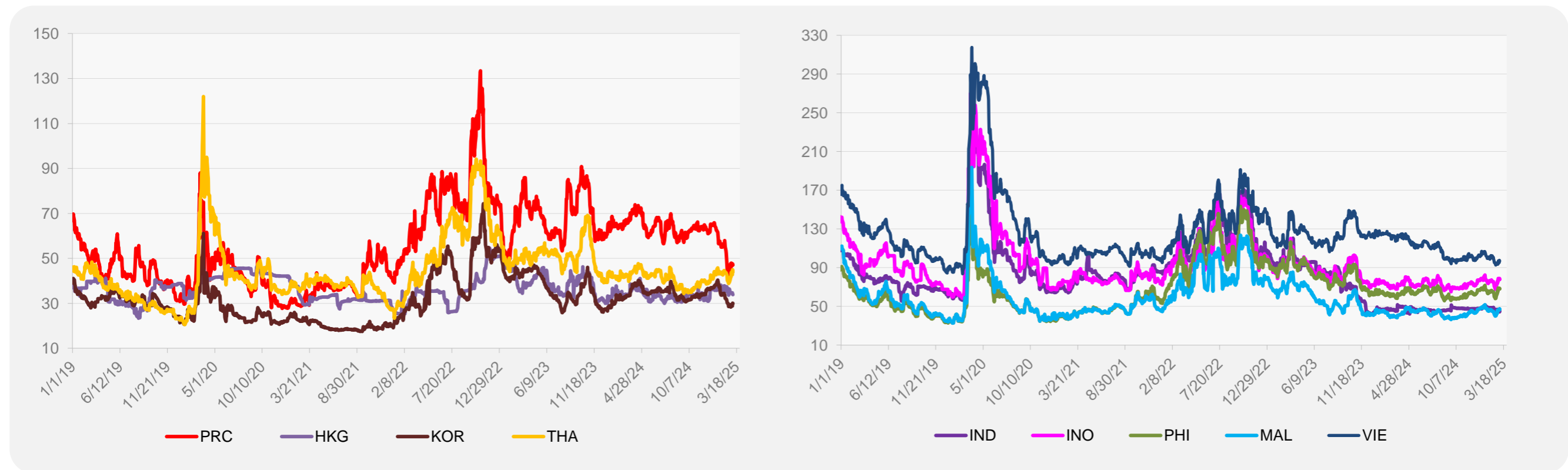


Source: ADB calculations using data from Bloomberg.

5-YEAR LOCAL CURRENCY GOVERNMENT BOND YIELDS (%)



5-YEAR CREDIT DEFAULT SWAP¹



¹ In USD and based on sovereign bonds.
Source: ADB calculations using data from Bloomberg.