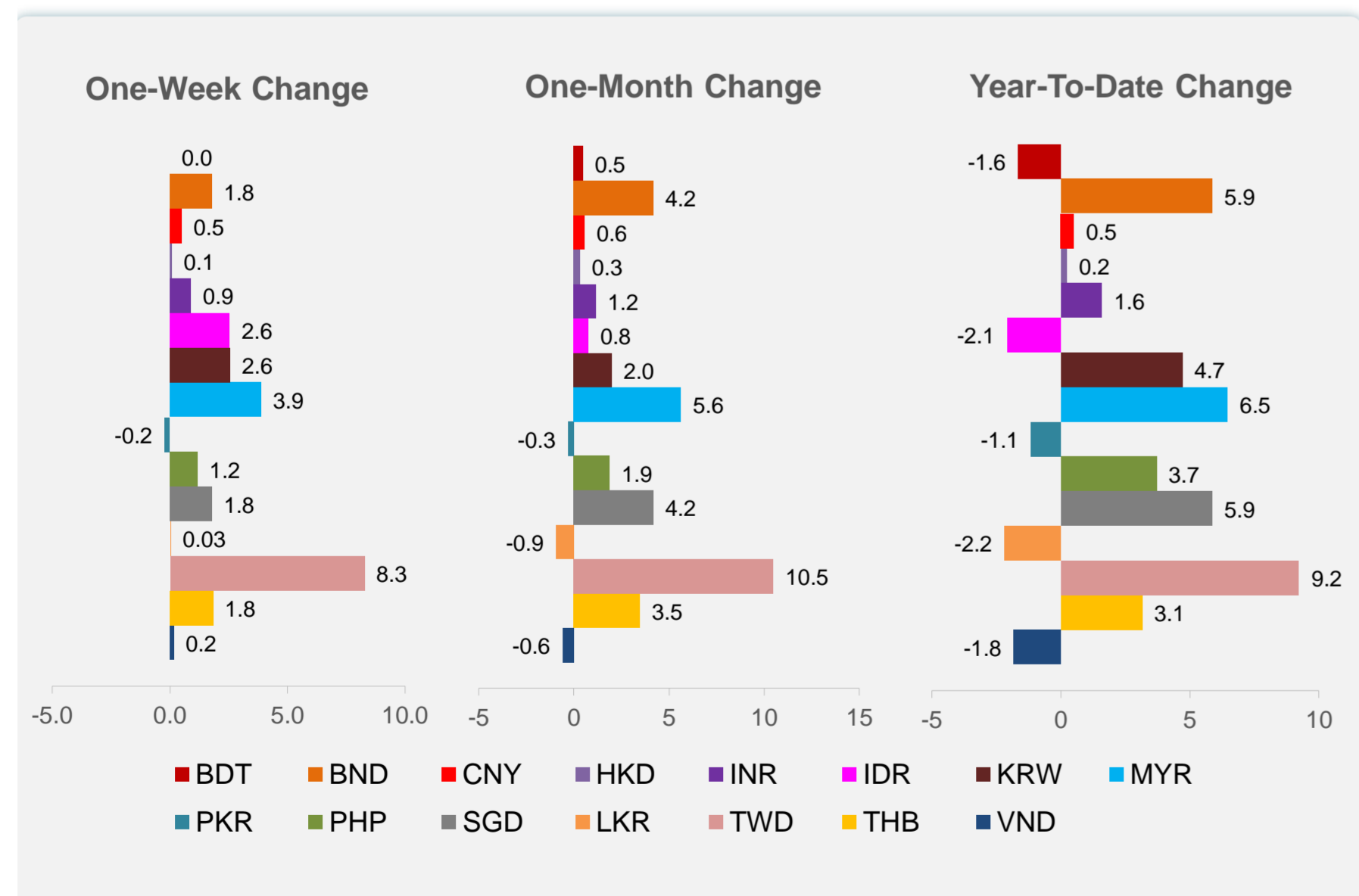
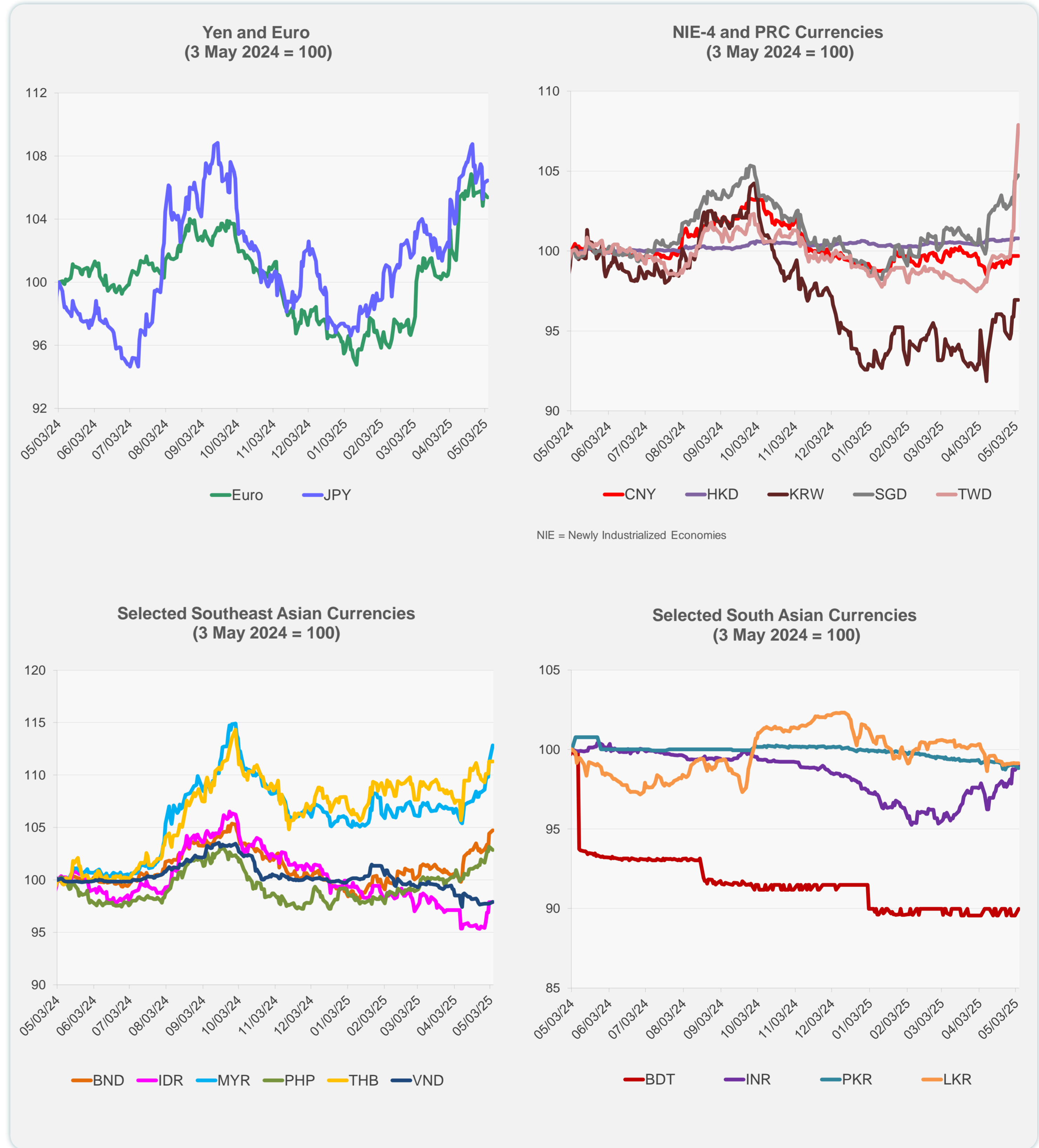
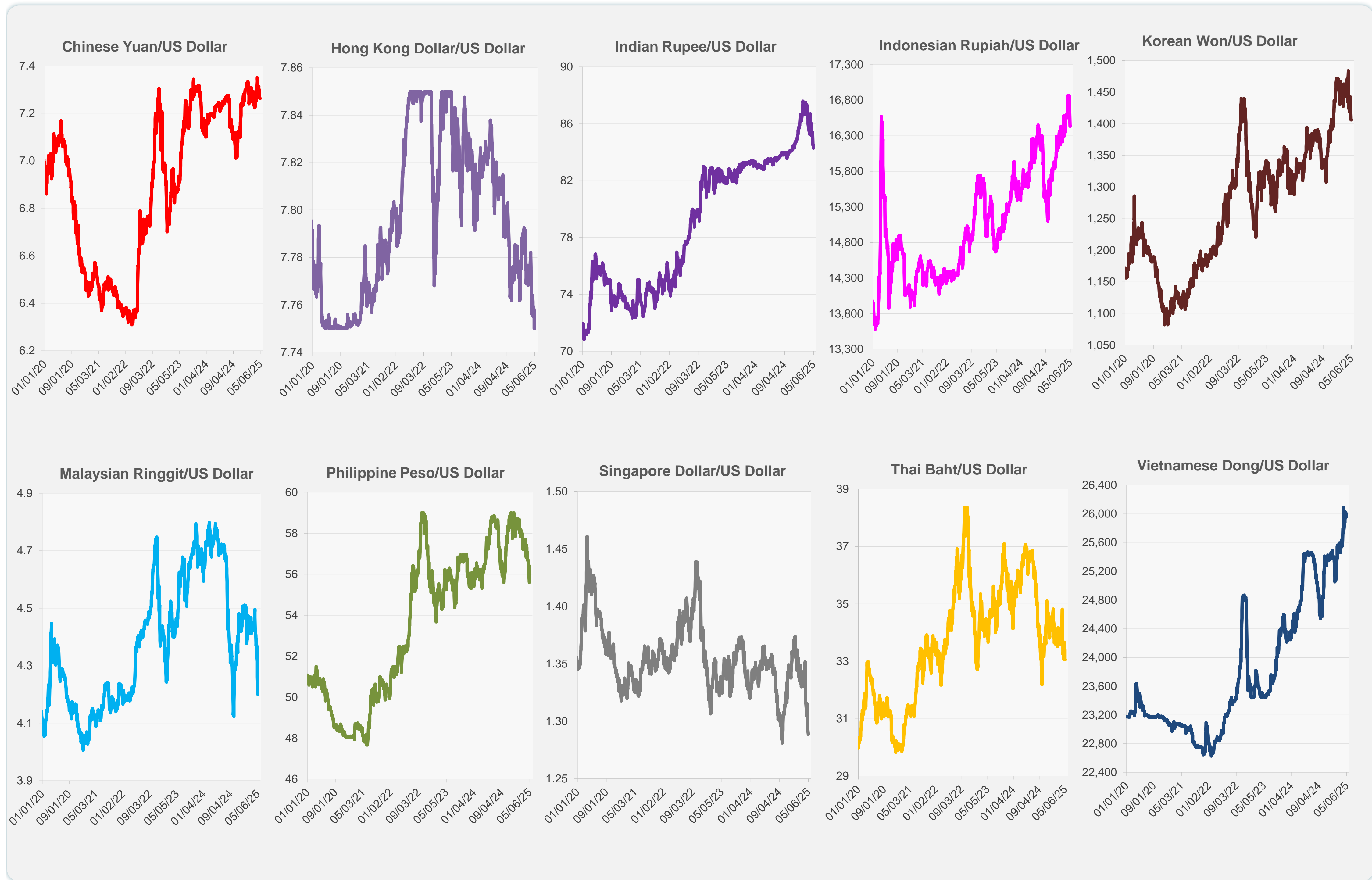


	Latest Closing	% change from Previous Day	% change from 01-Jan-25
Euro	0.88	-0.26	9.50
Japanese yen (JPY)	143.77	0.16	9.31
Bangladeshi taka (BDT)	121.50	0.45	-1.65
Brunei dollar (BND)	1.29	0.31	5.87
Chinese yuan (CNY)	7.26	0.00	0.50
Hong Kong dollar (HKD)	7.75	0.00	0.23
Indian rupee (INR)	84.27	0.30	1.59
Indonesian rupiah (IDR)	16,435.00	0.00	-2.07
Korean won (KRW)	1,406.10	0.00	4.70
Malaysian ringgit (MYR)	4.20	1.44	6.46
Pakistan rupee (PKR)	281.60	-0.17	-1.15
Philippine peso (PHP)	55.78	-0.32	3.70
Singapore dollar (SGD)	1.29	0.31	5.87
Sri Lanka rupee (LKR)	299.50	0.00	-2.17
Taipei,China NT dollar (TWD)	30.01	3.71	9.23
Thai baht (THB)	33.06	0.00	3.15
Vietnamese dong (VND)	25,955.00	0.19	-1.81



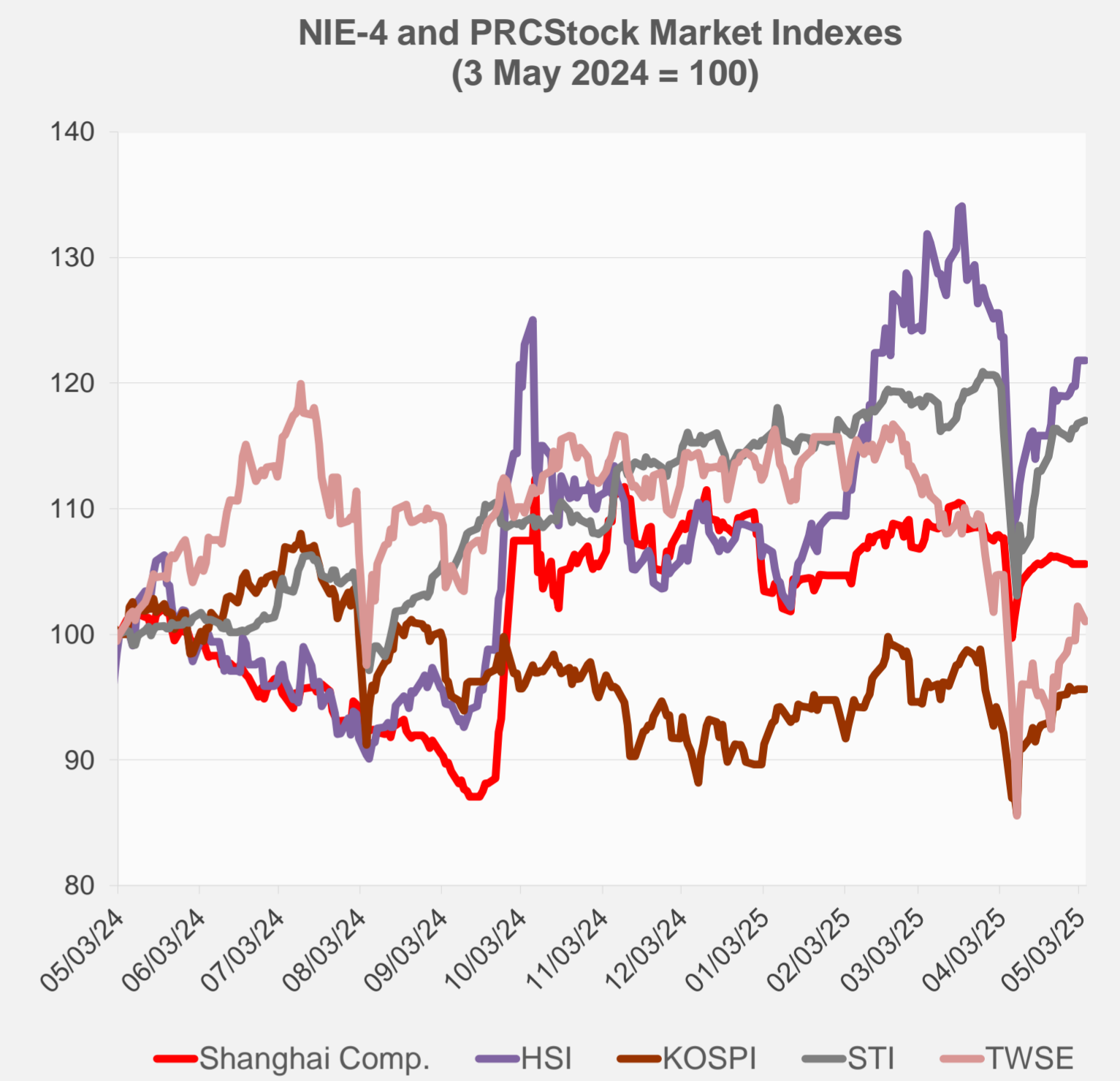
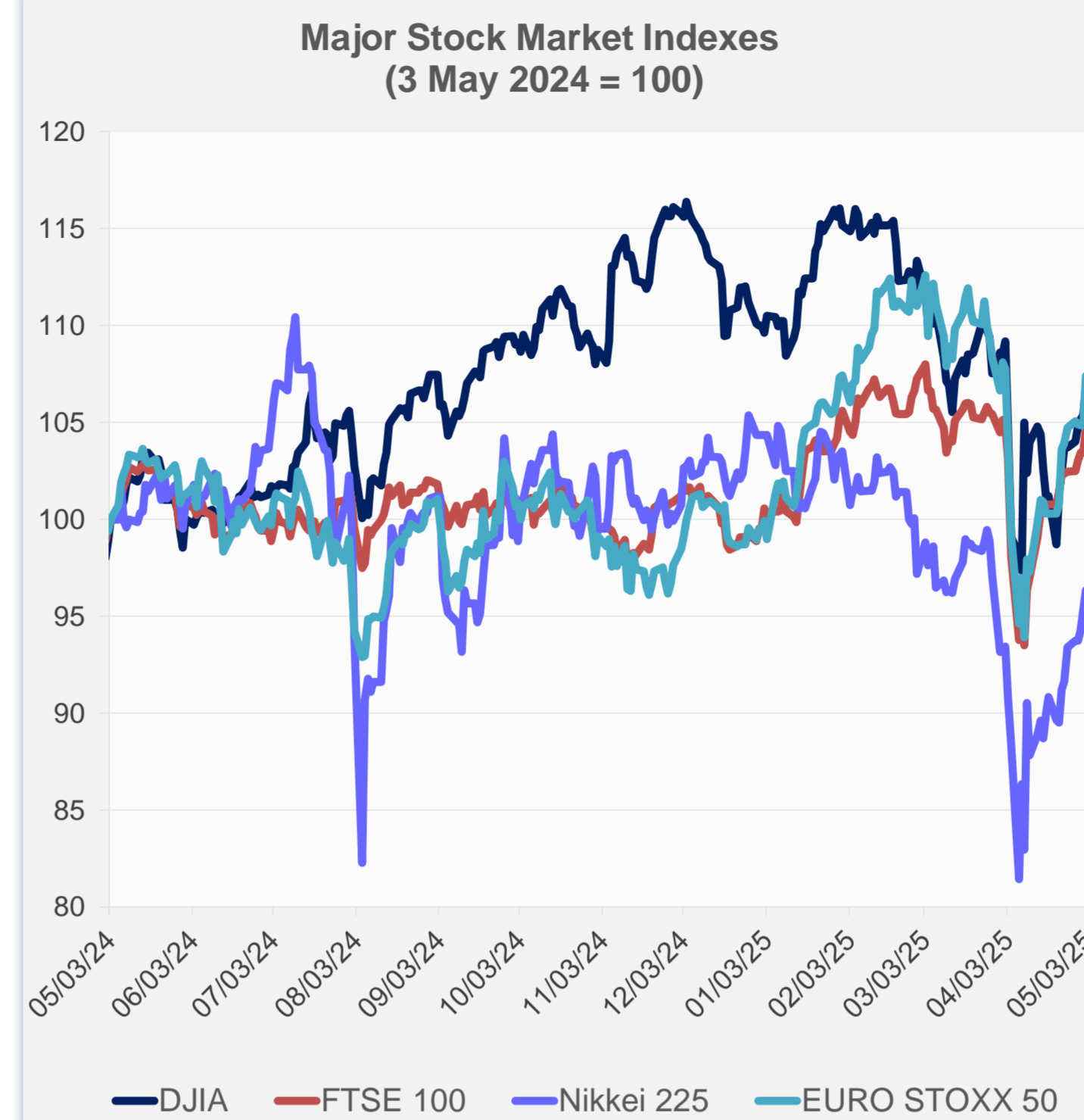
Note: Negative/Decreasing values indicate depreciation of local currency, and positive/increasing values indicate appreciation.
Source: ADB calculations using data from Haver Analytics.



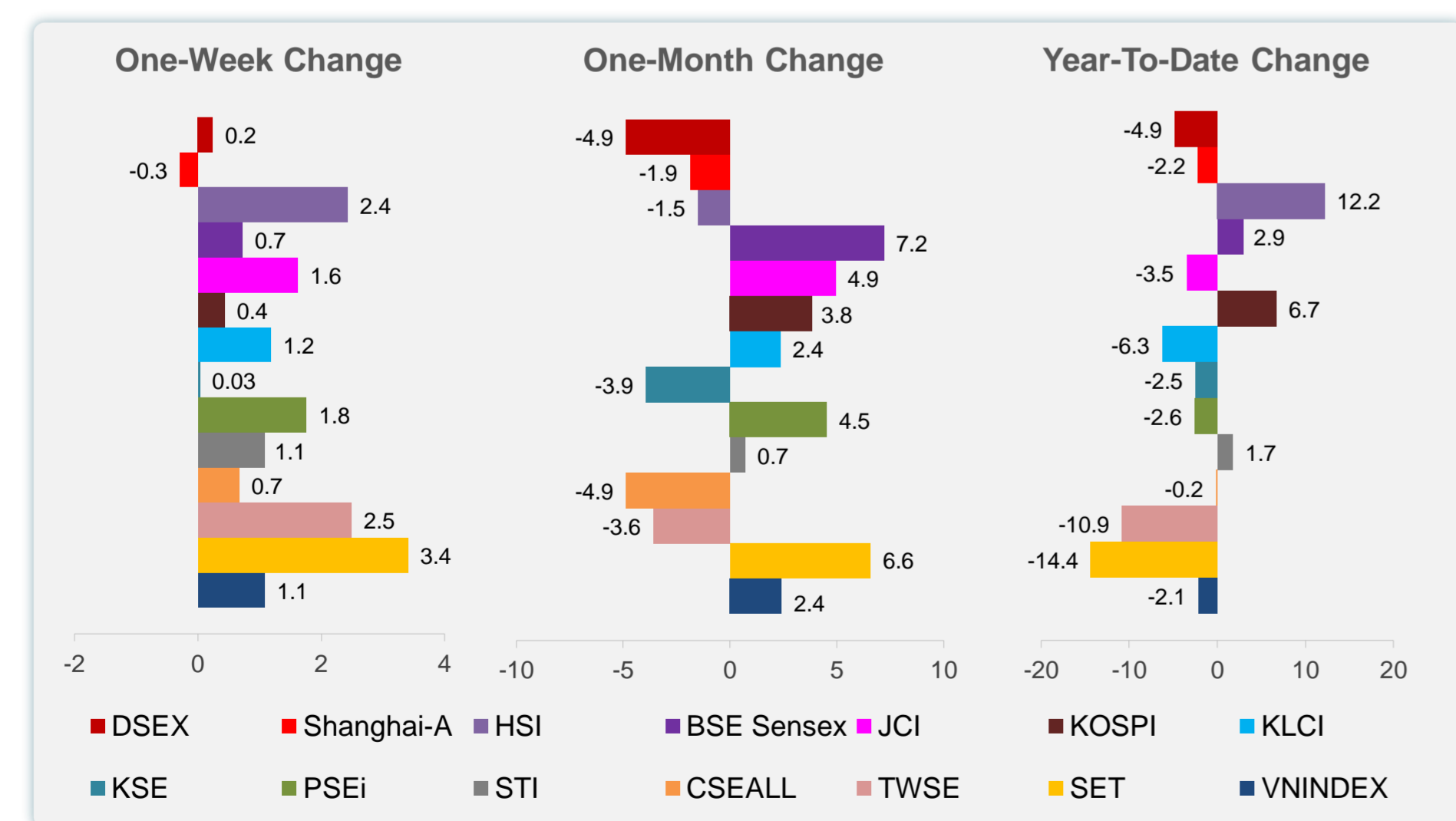
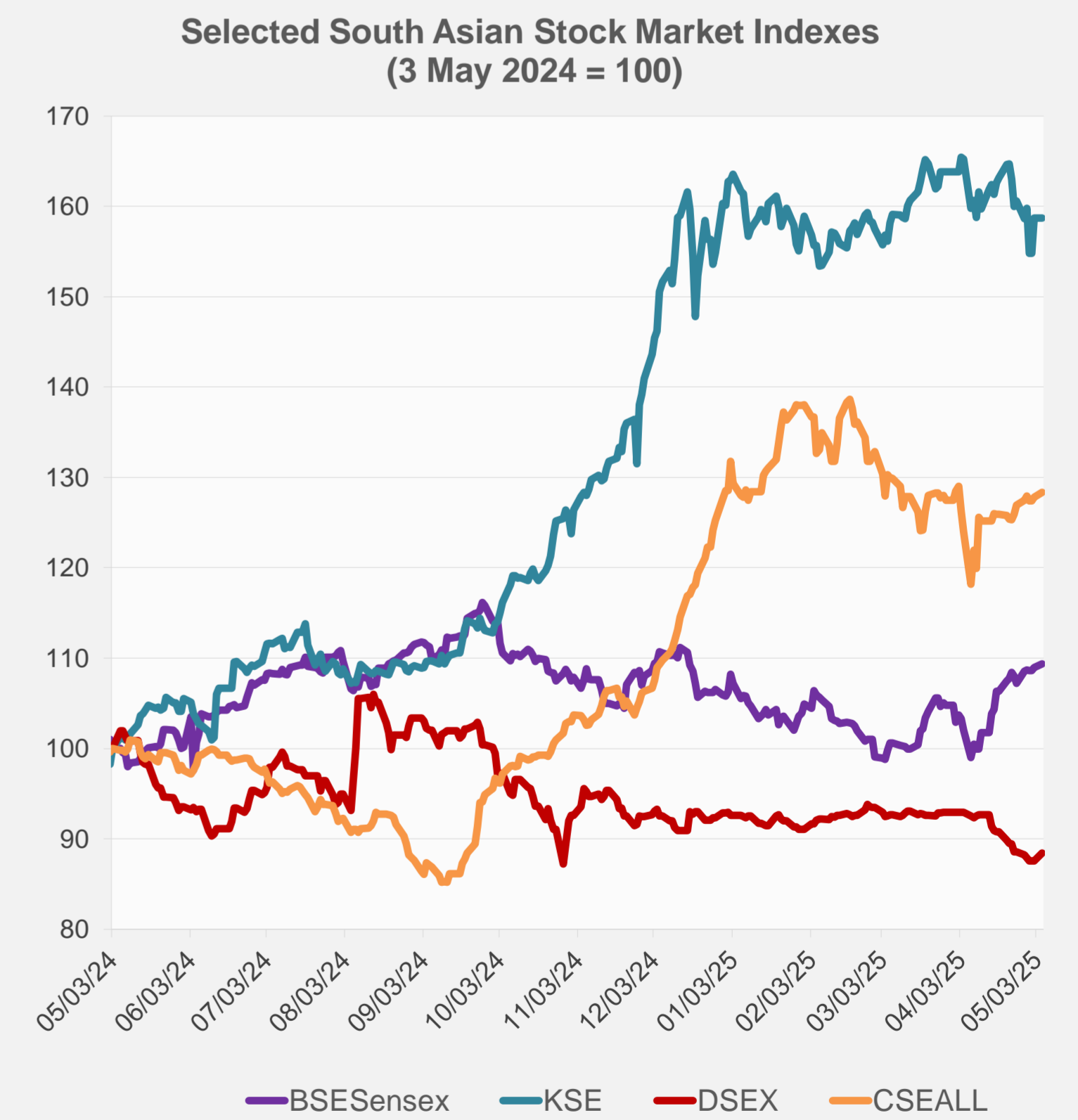
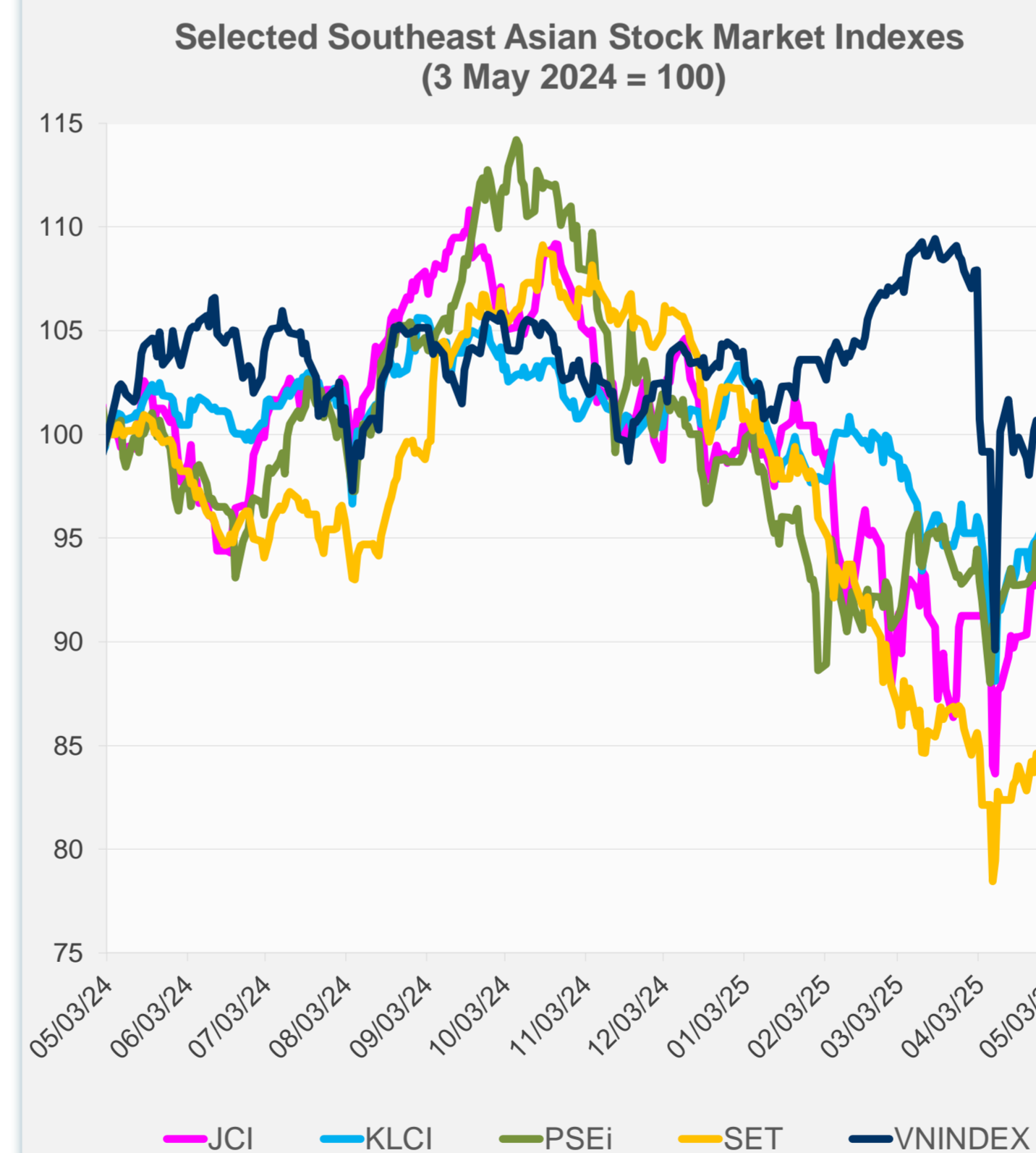
Source: Haver Analytics.

Daily Market Watch
STOCK INDEXES

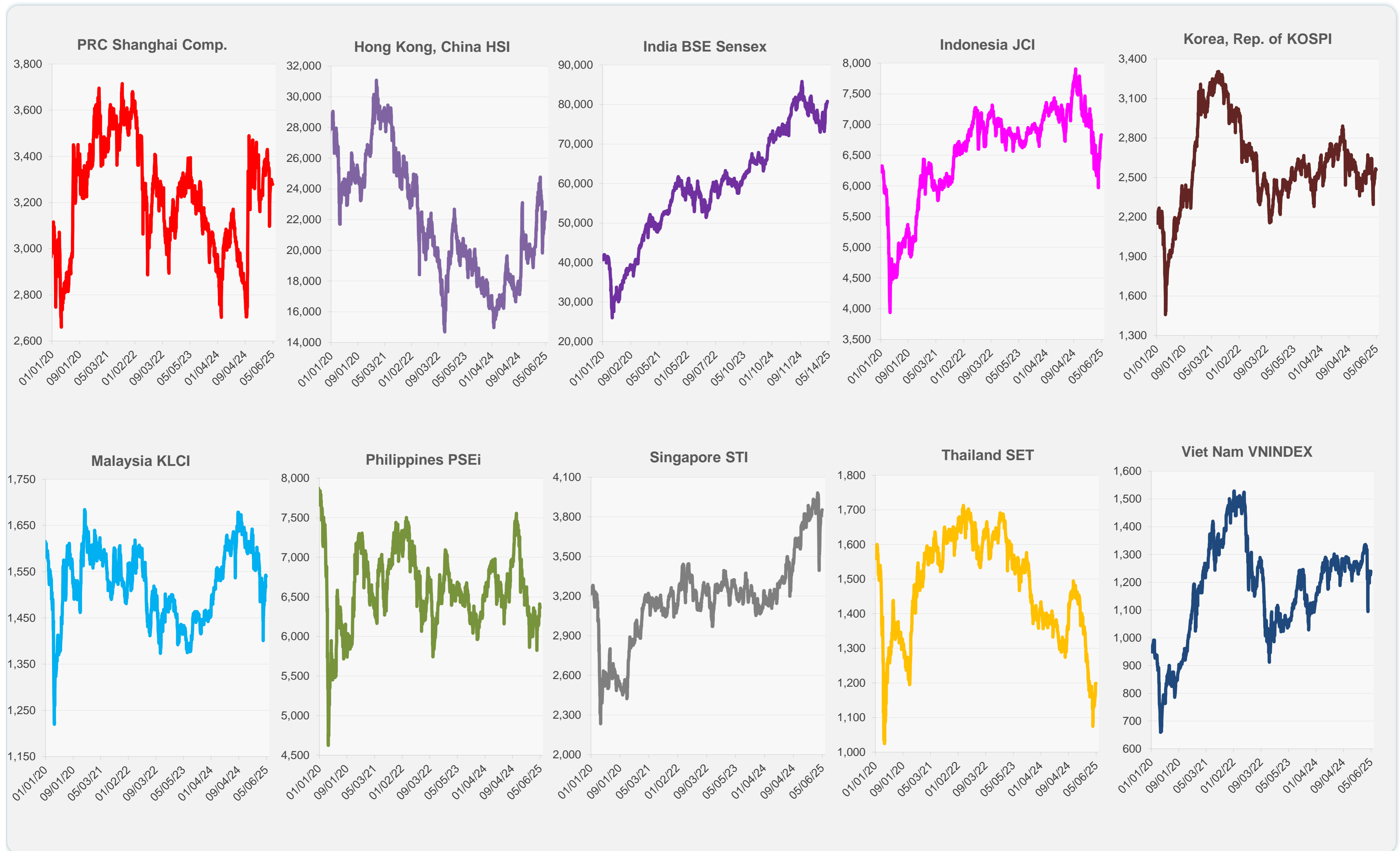
	Latest Closing	% change from Previous Day	% change from 01-Jan-25
US Dow Jones Ind Avg	41,218.83	-0.24	-3.12
US NASDAQ	17,844.24	-0.74	-7.59
US S&P 500	5,650.38	-0.64	-3.93
UK FTSE 100	8,596.35	0.00	5.18
EURO STOXX 50	5,283.05	-0.04	7.91
Japan NIKKEI 225	36,830.69	0.00	-7.68
Bangladesh DSEX	4,964.67	0.95	-4.86
PRC Shanghai Comp.	3,279.03	0.00	-2.17
Hong Kong, China HSI	22,504.68	0.00	12.19
India BSE Sensex	80,796.84	0.37	2.92
Indonesia JCI	6,831.95	0.24	-3.50
Korea, Rep. of KOSPI	2,559.79	0.00	6.68
Malaysia KLCI	1,539.54	-0.19	-6.26
Pakistan KSE 100	114,102.23	-0.01	-2.48
Philippines PSEi	6,359.63	-0.81	-2.59
Singapore STI	3,853.07	0.21	1.73
Sri Lanka CSEALL	15,916.69	0.41	-0.18
Taipei, China TWSE	20,532.99	-1.23	-10.86
Thailand SET	1,198.98	0.00	-14.37
Viet Nam VNINDEX	1,240.05	1.12	-2.11



NIE = Newly Industrialized Economies



Sources: ADB calculations using data from CEIC Data Company and Haver Analytics.



Sources: CEIC Data Company and Haver Analytics.

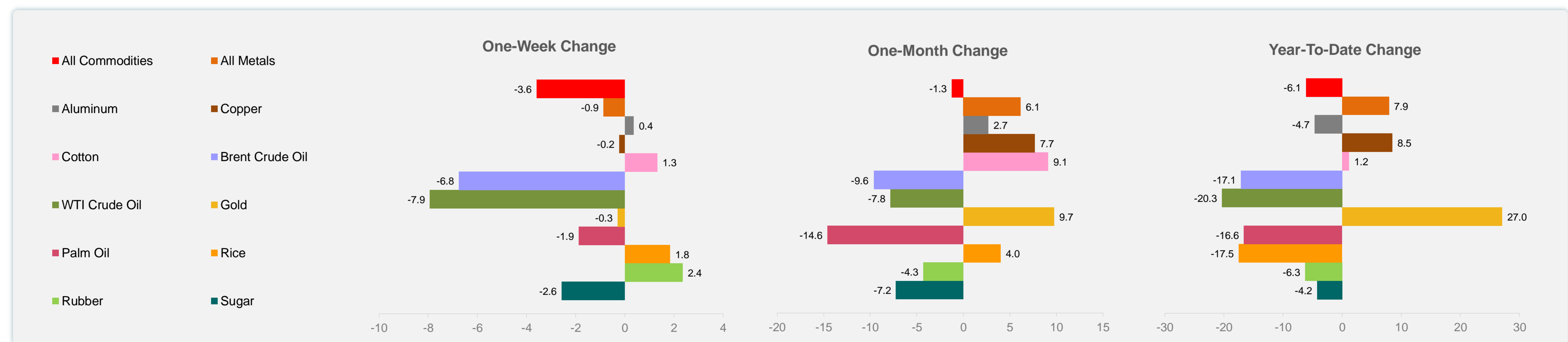
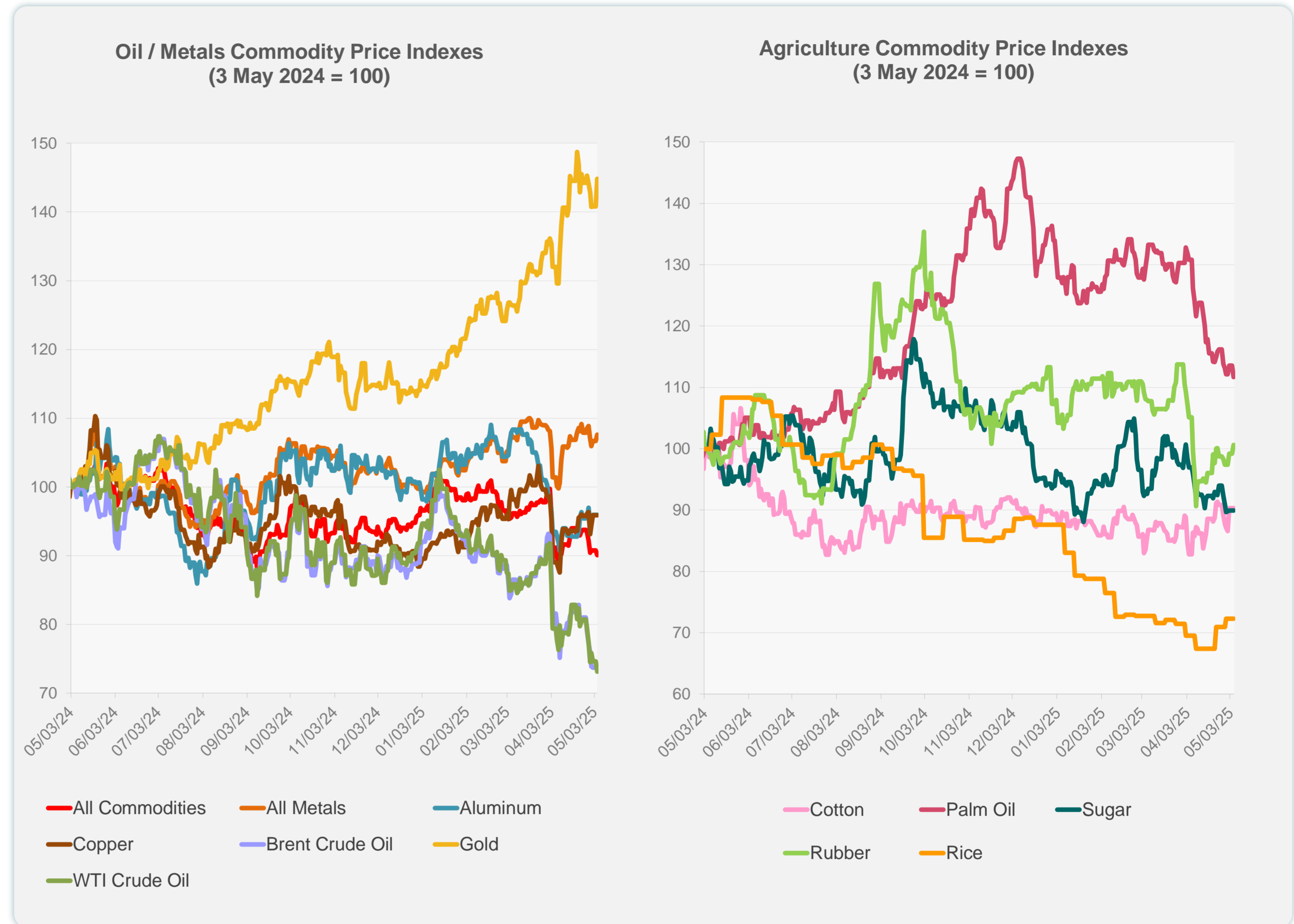
Daily Market Watch
COMMODITY PRICES

6 May 2025, 9:00 AM Manila

	Unit	Latest Closing	% change from Previous Day	% change from 01-Jan-25
S&P All Commodities	US\$	516.12	-0.78	-6.10
S&P All Metals	US\$	331.71	0.86	7.92
Aluminum	US\$/metric ton	2,408.82	0.00	-4.67
Copper	US\$/metric ton	9,385.73	0.00	8.47
Cotton	US cents/lb	66.67	0.02	1.17
Brent Crude Oil	US\$/barrel	61.41	0.00	-17.14
WTI Crude Oil	US\$/barrel	57.13	-1.99	-20.34
Gold	US\$/troy oz	3,334.12	2.89	27.04
Palm Oil	US\$/metric tonne	917.22	-1.60	-16.63
Rice ¹	US\$/metric ton	443.00	0.00	-17.50
Rubber ²	US\$/kg	222.00	1.37	-6.25
Sugar	US cents/lb	17.43	0.00	-4.23

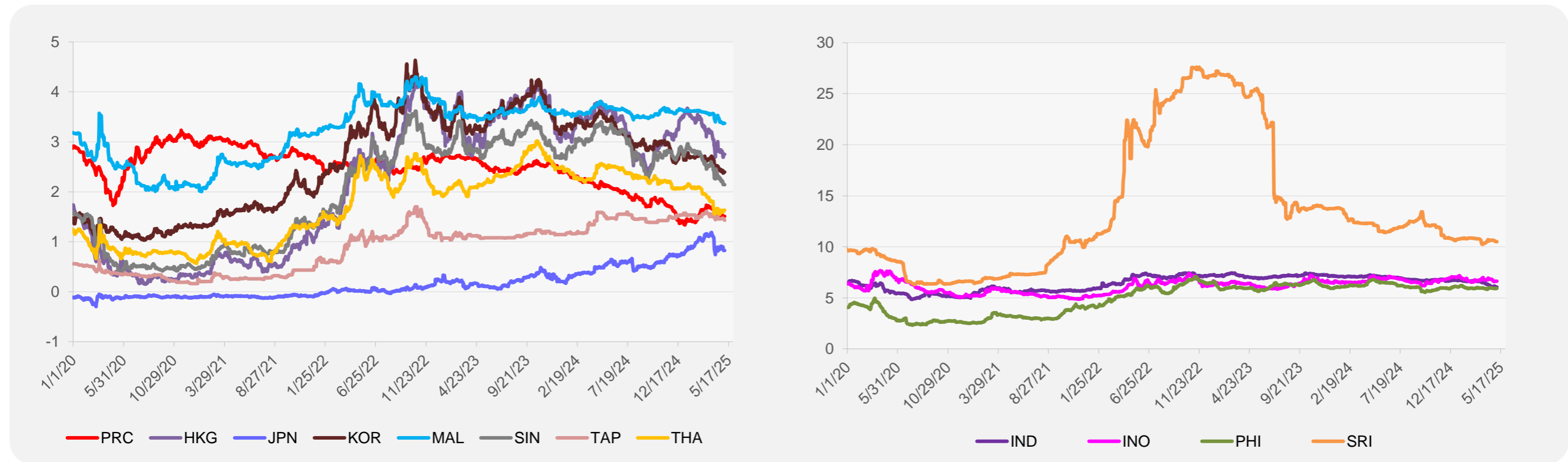
¹ Latest closing price from 30 April 2025.

² Singapore Exchange, Ribbed Smoked Sheet Rubber.

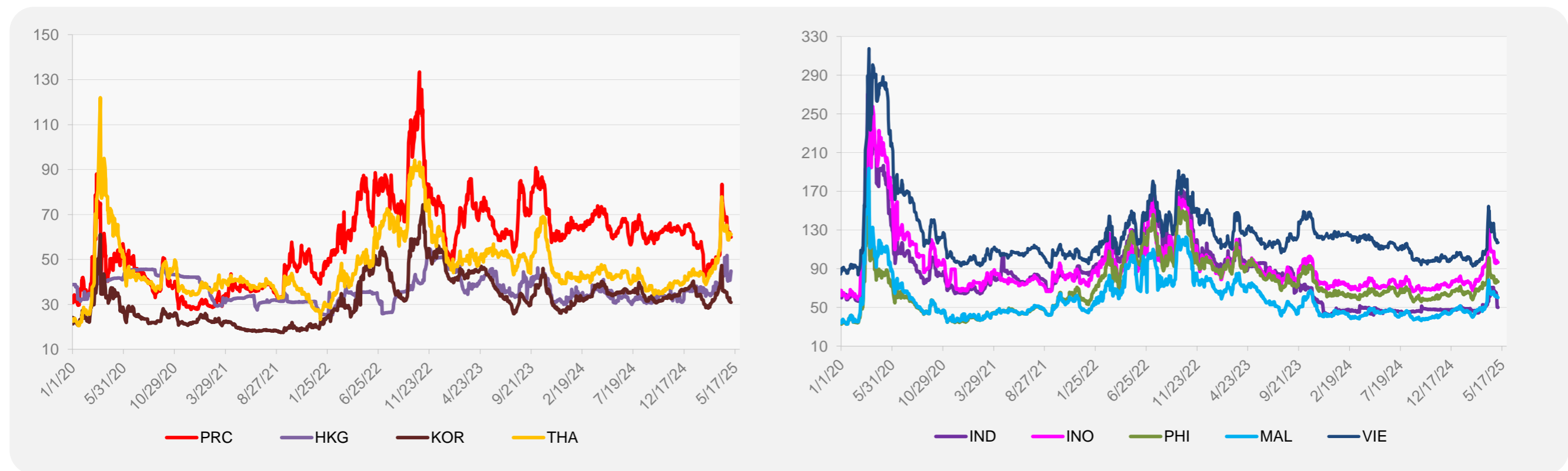


Source: ADB calculations using data from Bloomberg.

5-YEAR LOCAL CURRENCY GOVERNMENT BOND YIELDS (%)



5-YEAR CREDIT DEFAULT SWAP¹



¹ In USD and based on sovereign bonds.
Source: ADB calculations using data from Bloomberg.