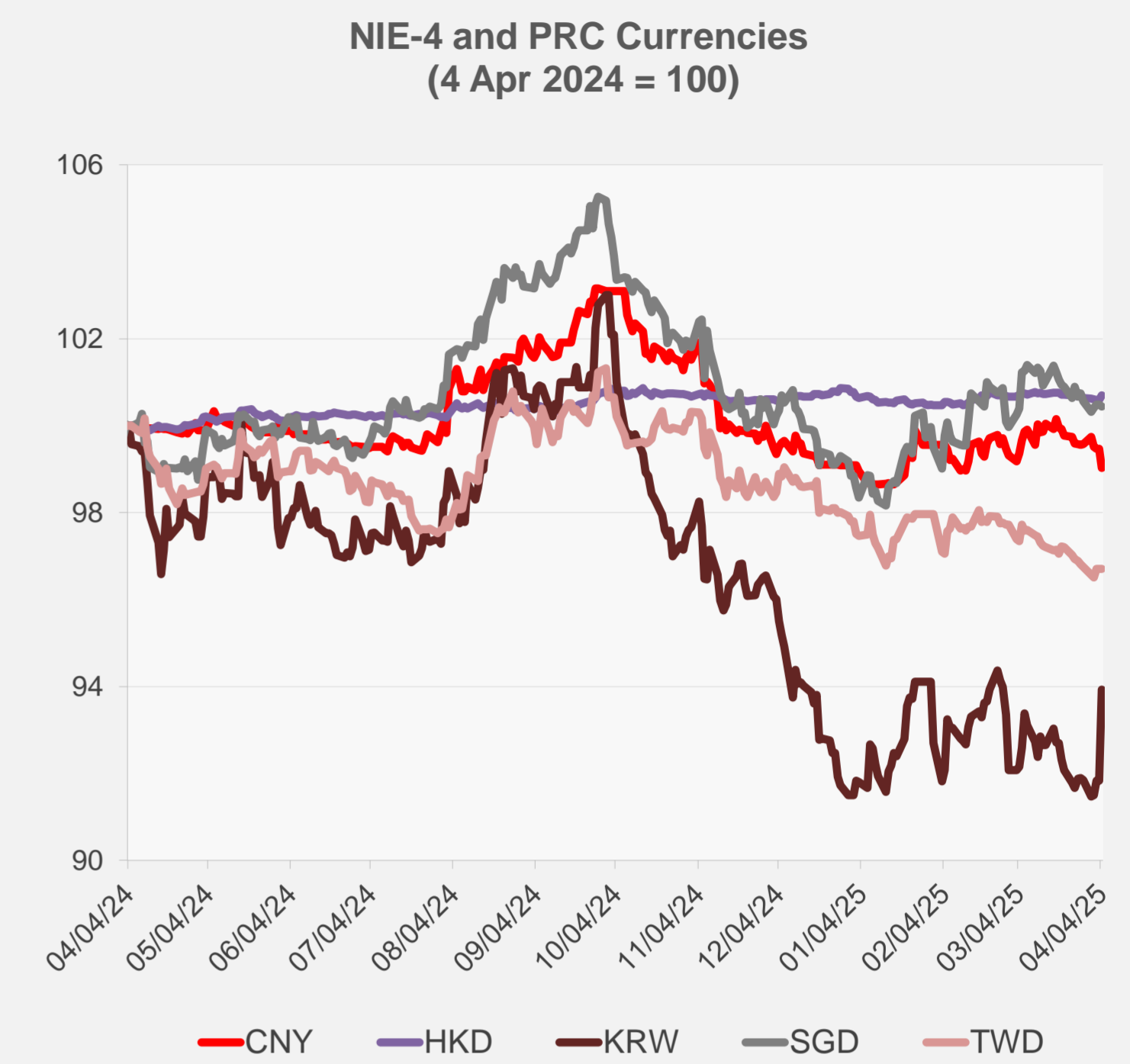
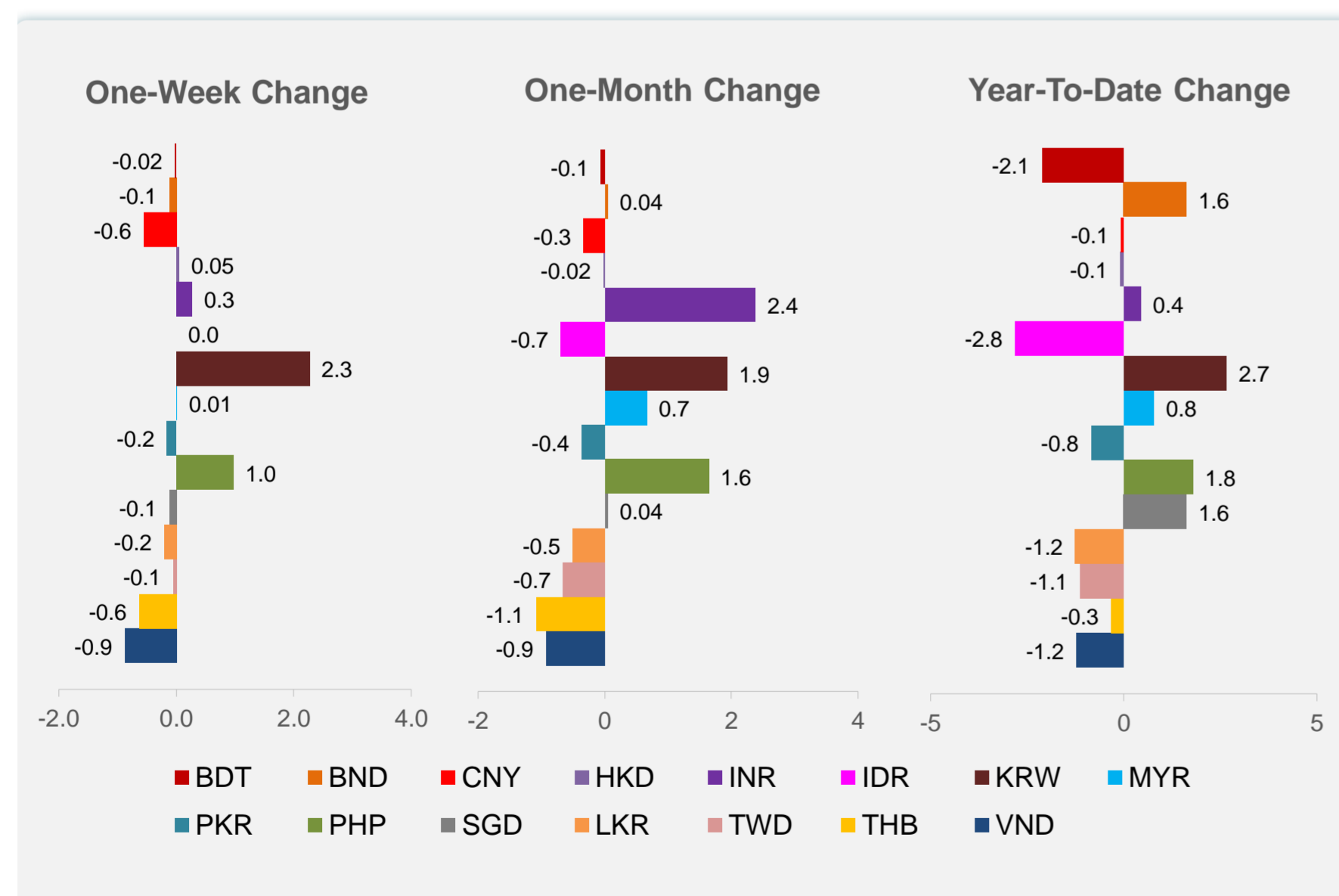
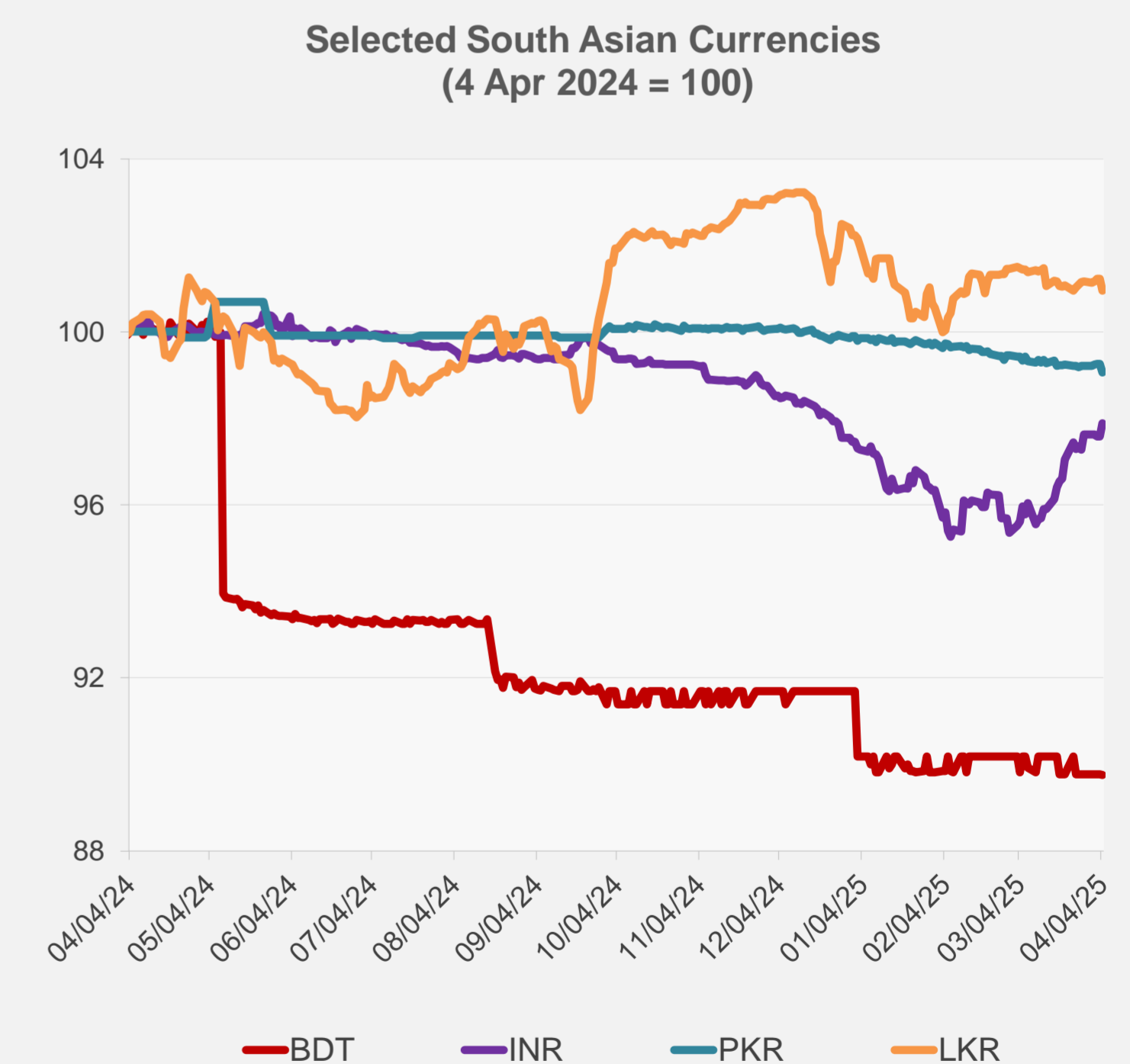
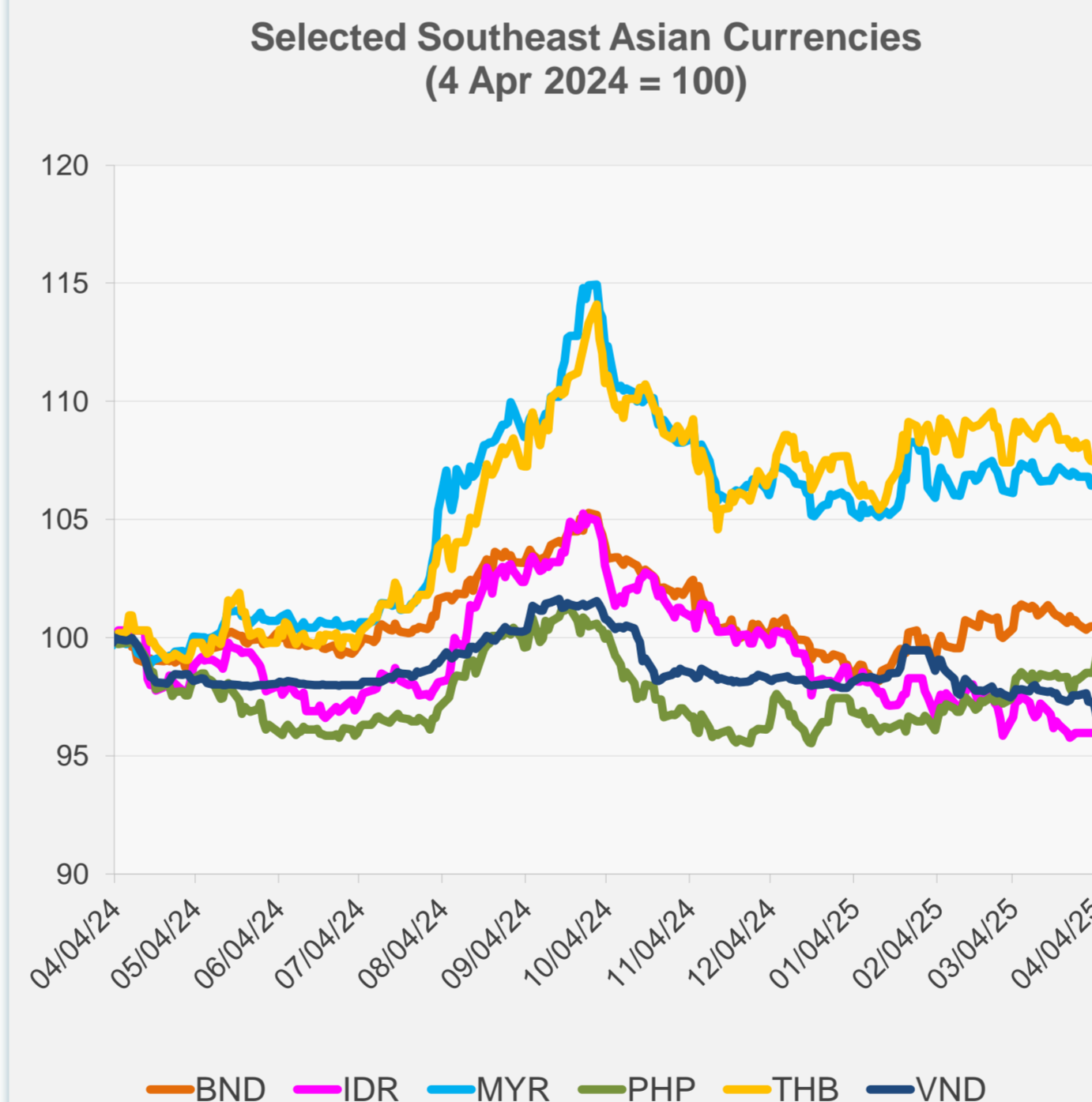


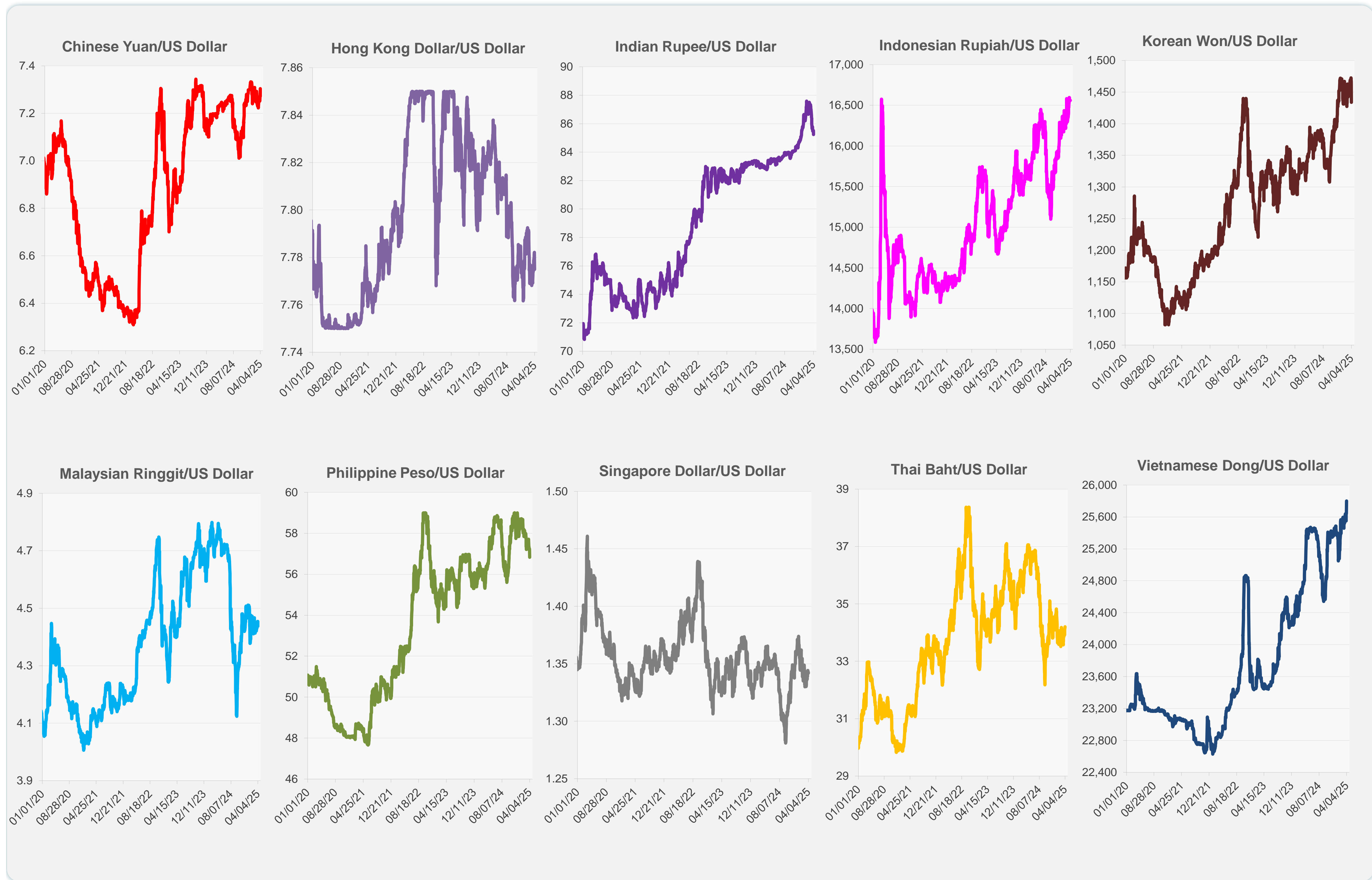
	Latest Closing	% change from Previous Day	% change from 01-Jan-25
Euro	0.91	1.22	6.12
Japanese yen (JPY)	145.53	2.88	7.99
Bangladeshi taka (BDT)	122.08	-0.02	-2.11
Brunei dollar (BND)	1.34	-0.04	1.62
Chinese yuan (CNY)	7.30	-0.44	-0.06
Hong Kong dollar (HKD)	7.77	0.09	-0.09
Indian rupee (INR)	85.24	0.31	0.43
Indonesian rupiah (IDR)	16,560.00	0.00	-2.81
Korean won (KRW)	1,434.00	2.28	2.66
Malaysian ringgit (MYR)	4.44	0.38	0.78
Pakistan rupee (PKR)	280.73	-0.21	-0.84
Philippine peso (PHP)	56.83	0.70	1.79
Singapore dollar (SGD)	1.34	-0.04	1.62
Sri Lanka rupee (LKR)	296.70	-0.26	-1.25
Taipei,China NT dollar (TWD)	33.16	0.00	-1.12
Thai baht (THB)	34.21	-0.12	-0.32
Vietnamese dong (VND)	25,800.00	-0.61	-1.22



NIE = Newly Industrialized Economies



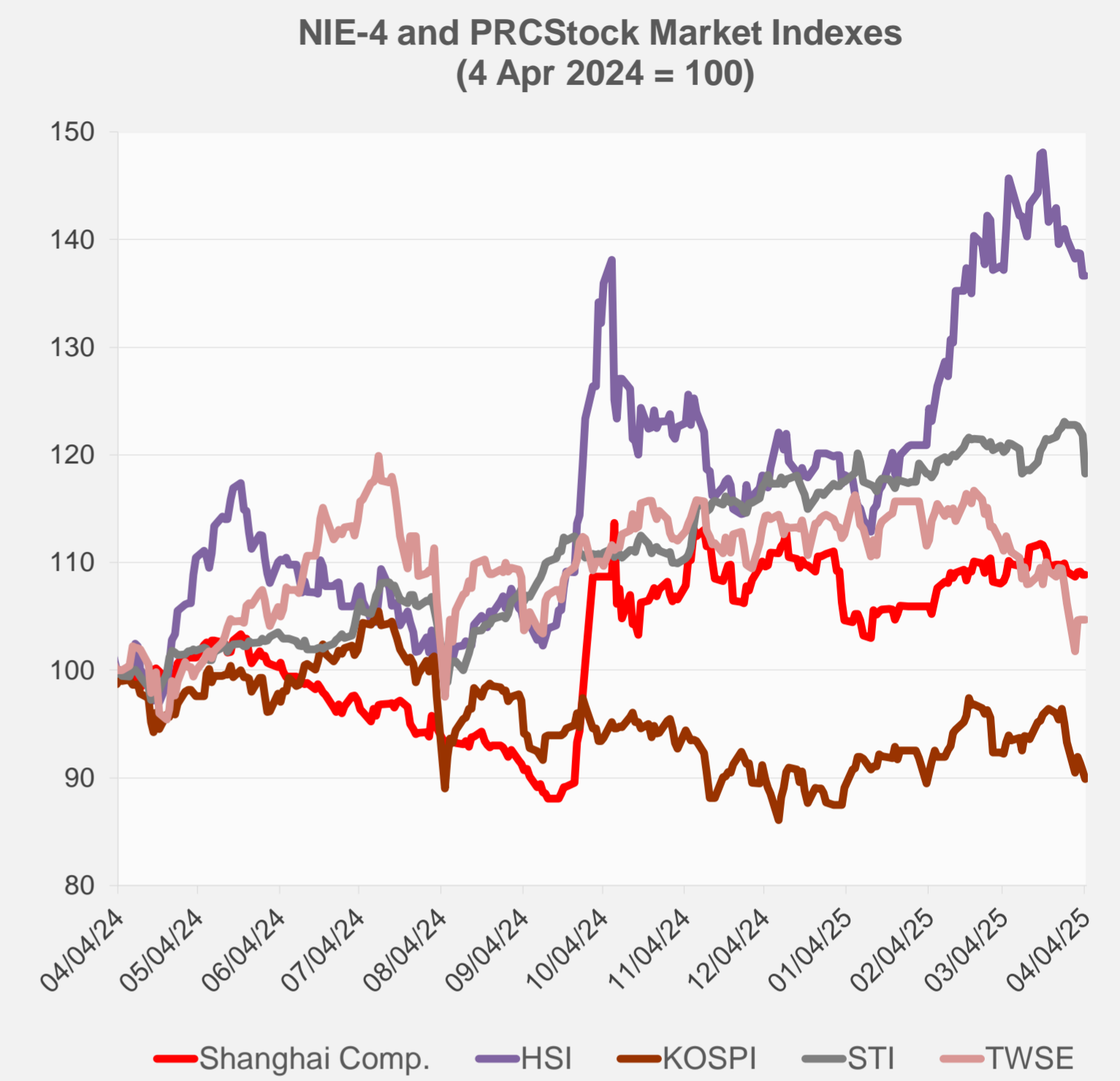
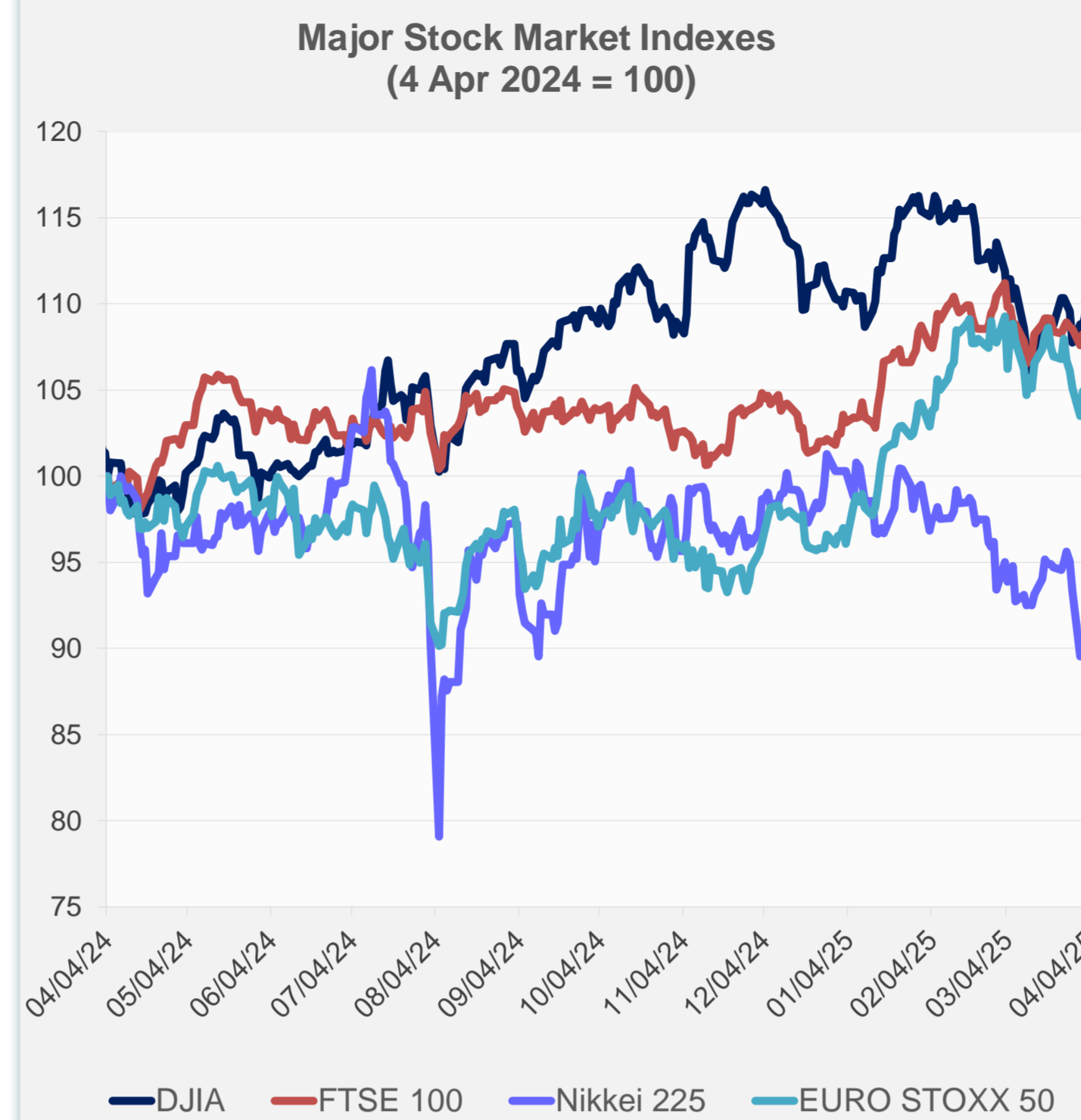
Note: Negative/Decreasing values indicate depreciation of local currency, and positive/increasing values indicate appreciation.
Source: ADB calculations using data from Haver Analytics.



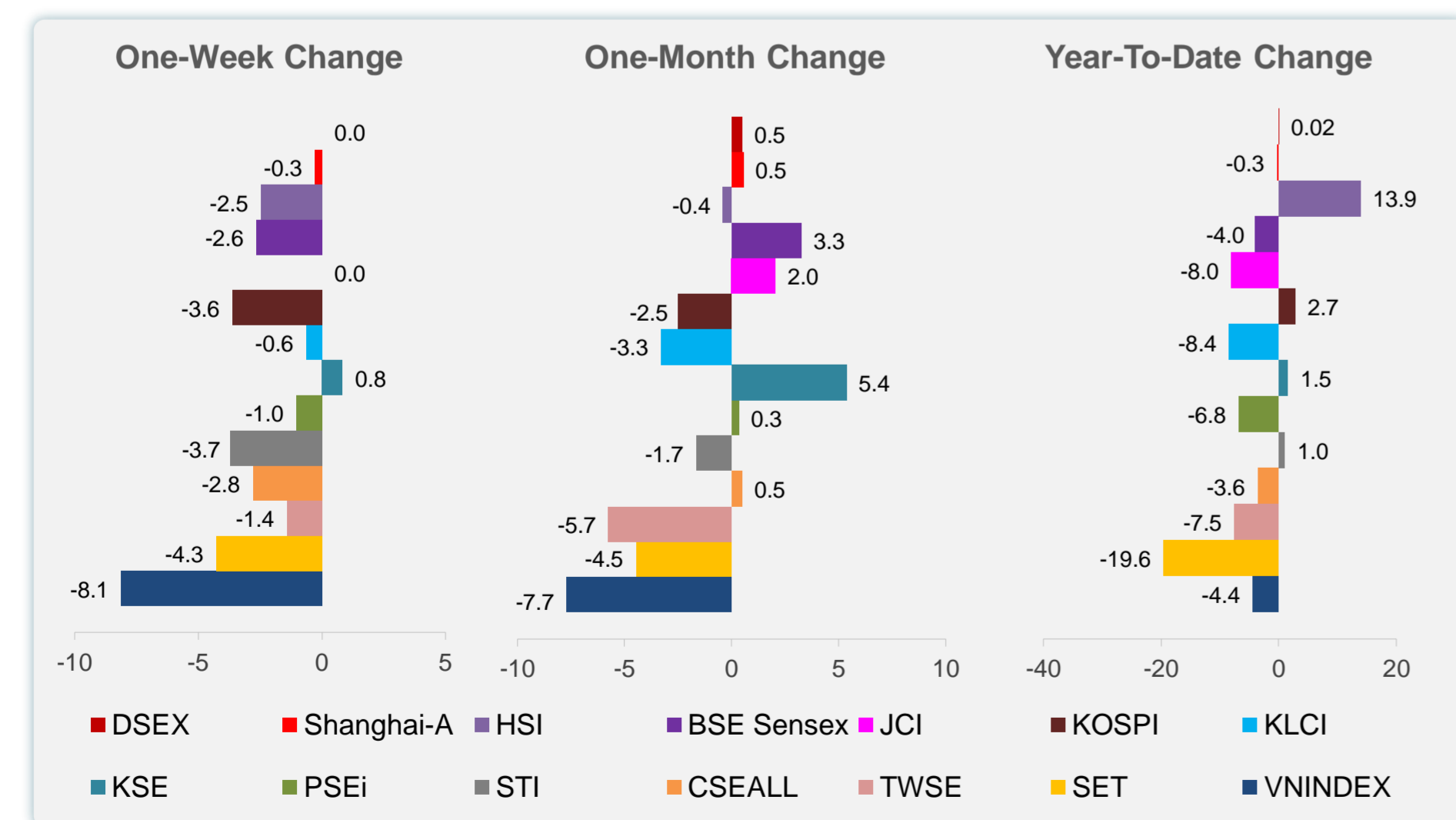
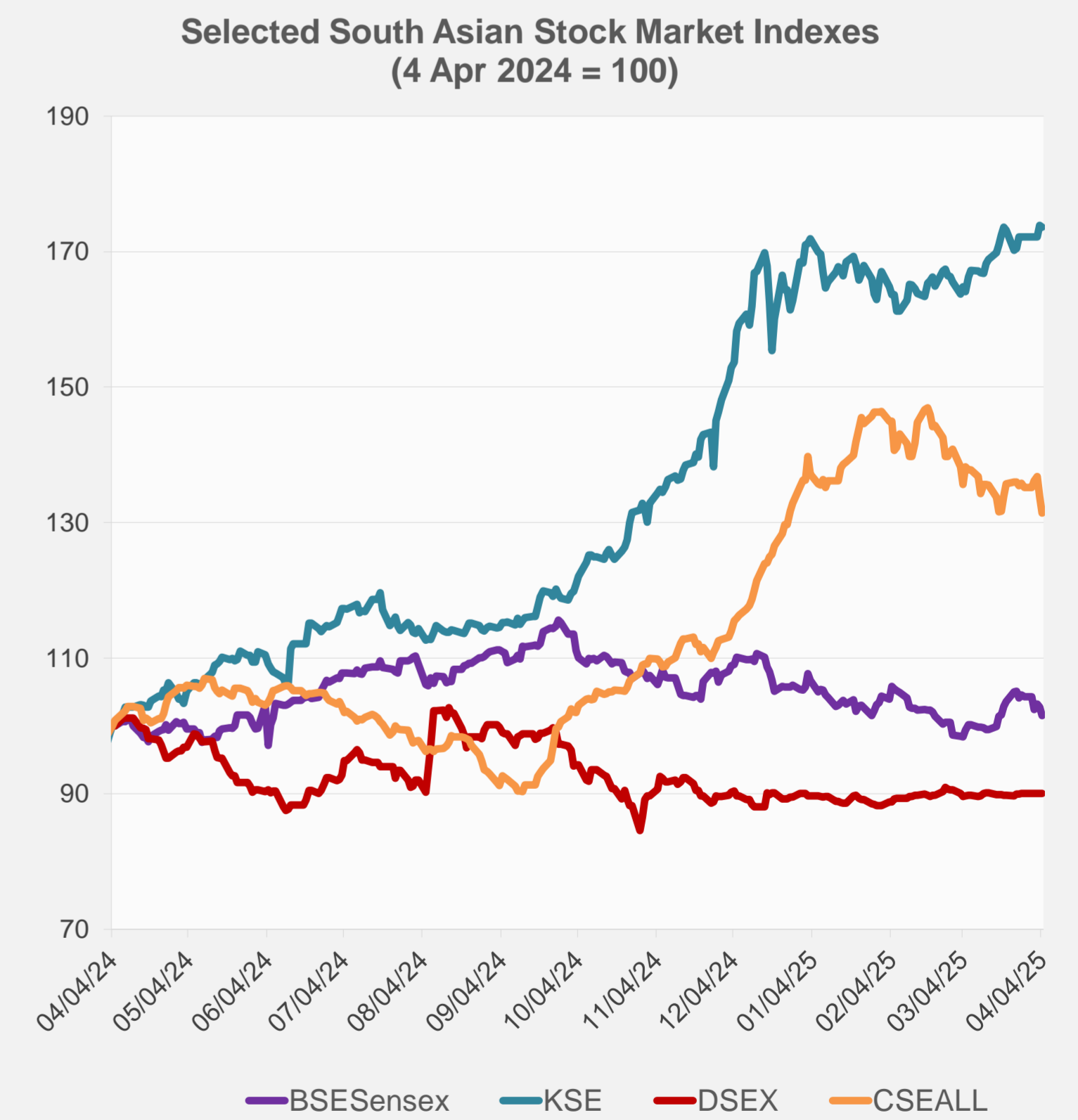
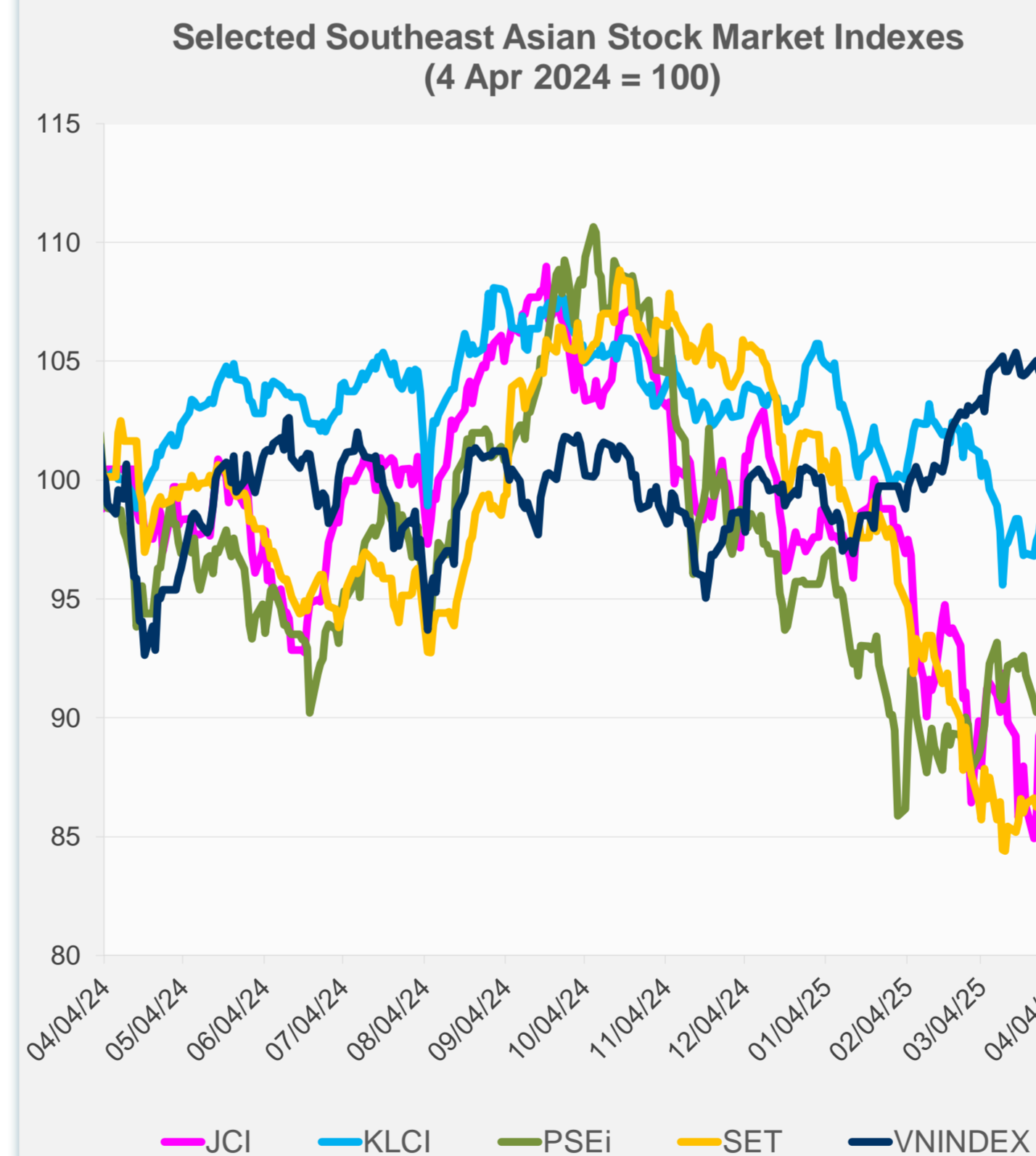
Source: Haver Analytics.

Daily Market Watch
STOCK INDEXES

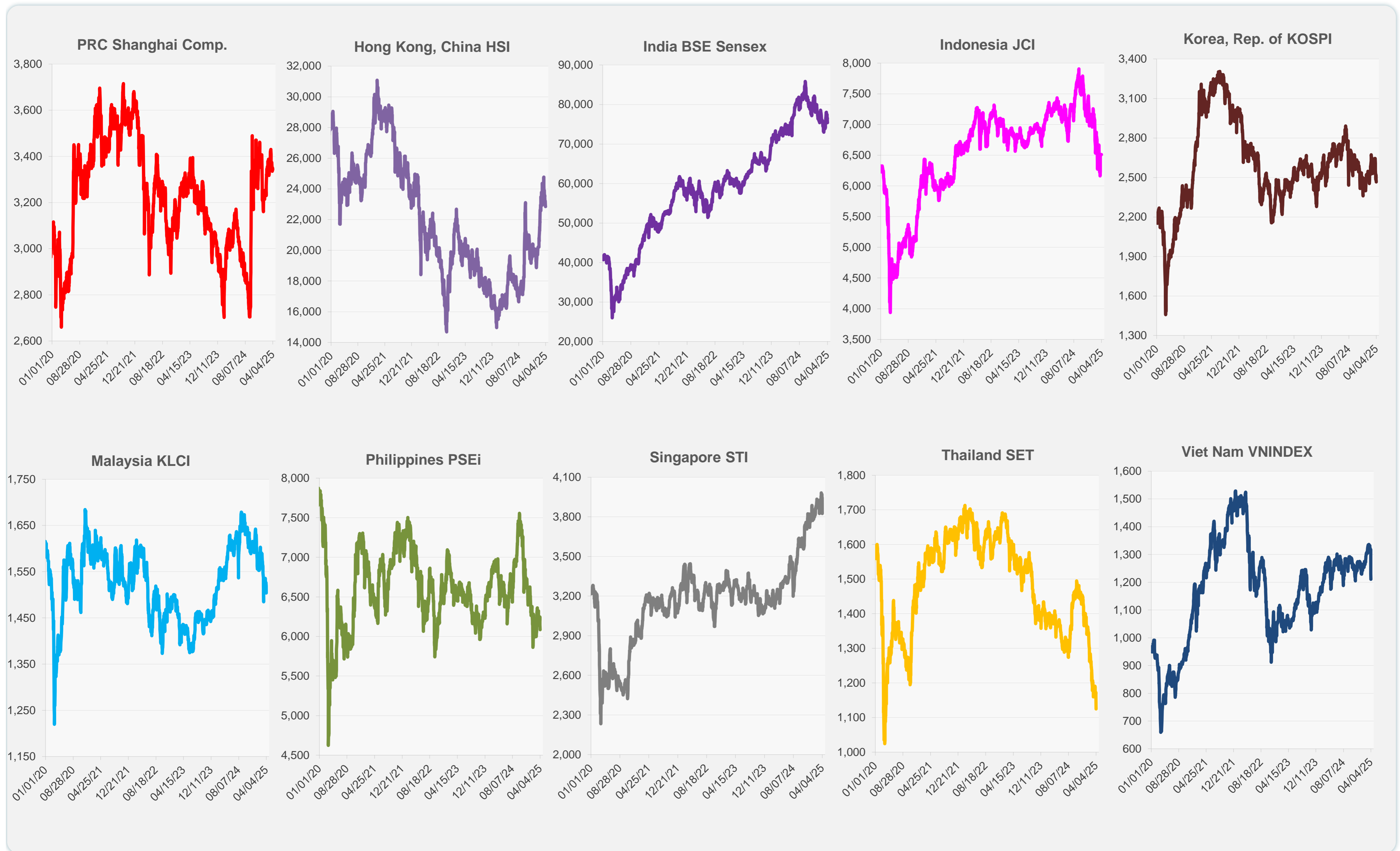
	Latest Closing	% change from Previous Day	% change from 01-Jan-25
US Dow Jones Ind Avg	38,314.86	-5.50	-9.94
US NASDAQ	15,587.79	-5.82	-19.28
US S&P 500	5,074.08	-5.97	-13.73
UK FTSE 100	8,054.98	-4.95	-1.44
EURO STOXX 50	4,878.31	-4.60	-0.36
Japan NIKKEI 225	33,780.58	-2.75	-15.33
Bangladesh DSEX	5,219.16	0.00	0.02
PRC Shanghai Comp.	3,342.01	0.00	-0.29
Hong Kong, China HSI	22,849.81	0.00	13.91
India BSE Sensex	75,364.69	-1.22	-4.00
Indonesia JCI	6,510.62	0.00	-8.04
Korea, Rep. of KOSPI	2,465.42	-0.86	2.75
Malaysia KLCI	1,504.14	-0.97	-8.41
Pakistan KSE 100	118,791.66	-0.12	1.52
Philippines PSEi	6,084.19	-1.00	-6.81
Singapore STI	3,825.86	-2.95	1.01
Sri Lanka CSEALL	15,373.35	-1.82	-3.58
Taipei, China TWSE	21,298.22	0.00	-7.54
Thailand SET	1,125.21	-3.15	-19.64
Viet Nam VNINDEX	1,210.67	-1.56	-4.43



NIE = Newly Industrialized Economies



Sources: ADB calculations using data from CEIC Data Company and Haver Analytics.



Sources: CEIC Data Company and Haver Analytics.

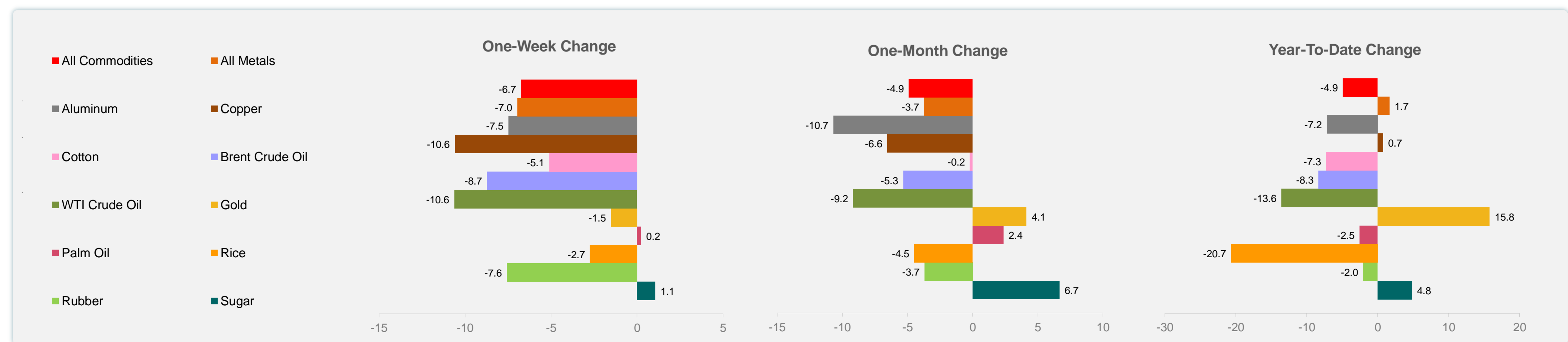
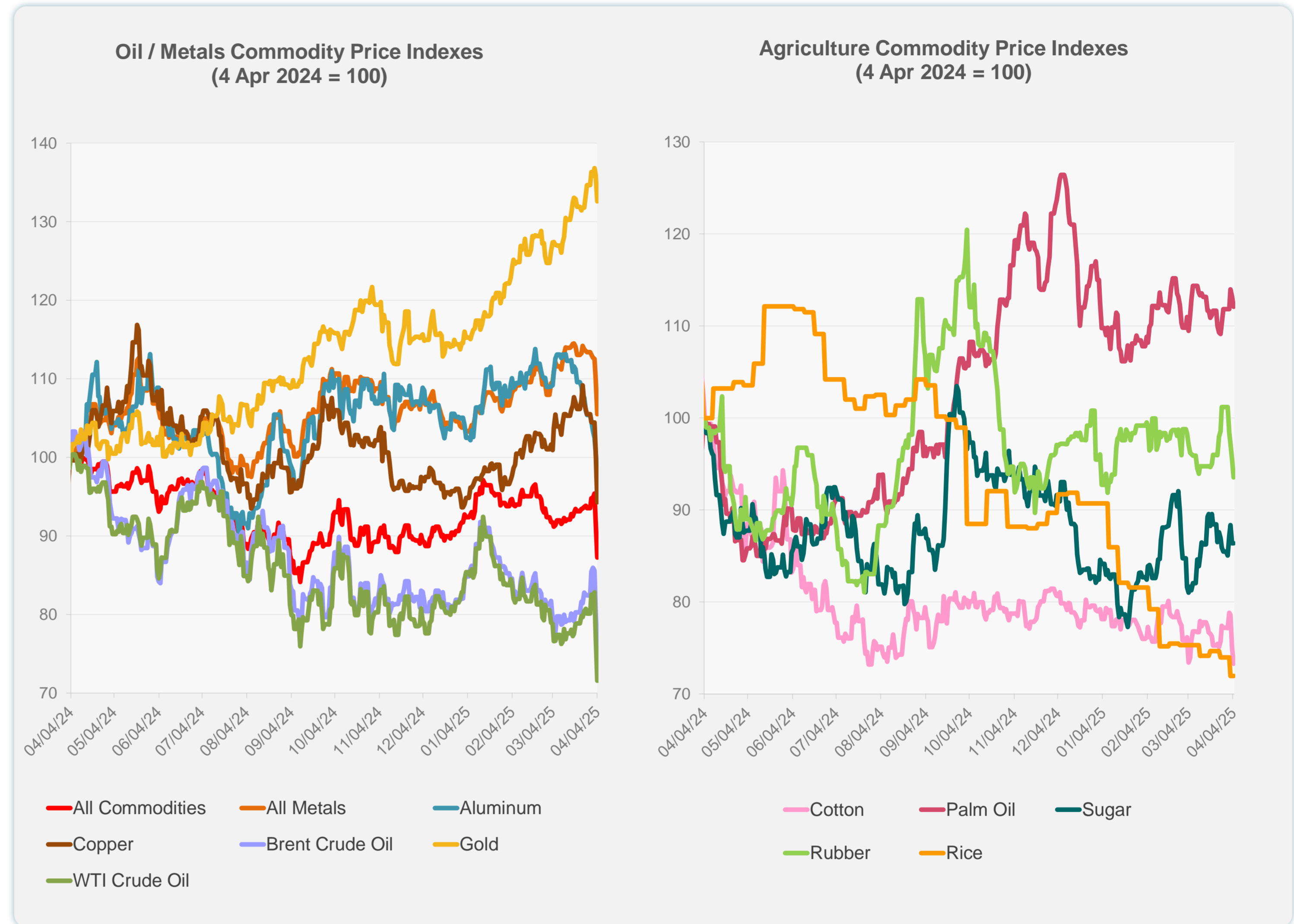
Daily Market Watch
COMMODITY PRICES

7 April 2025, 9:00 AM Manila

	Unit	Latest Closing	% change from Previous Day	% change from 01-Jan-25
S&P All Commodities	US\$	522.70	-4.94	-4.90
S&P All Metals	US\$	312.50	-4.04	1.67
Aluminum	US\$/metric ton	2,346.04	-3.08	-7.15
Copper	US\$/metric ton	8,717.08	-6.46	0.74
Cotton	US cents/lb	61.11	-2.30	-7.27
Brent Crude Oil	US\$/barrel	67.94	-6.19	-8.32
WTI Crude Oil	US\$/barrel	61.99	-7.41	-13.57
Gold	US\$/troy oz	3,038.24	-2.47	15.76
Palm Oil	US\$/metric tonne	1,072.19	-0.98	-2.54
Rice ¹	US\$/metric ton	426.00	0.00	-20.67
Rubber ²	US\$/kg	232.00	-2.07	-2.03
Sugar	US cents/lb	19.08	0.00	4.84

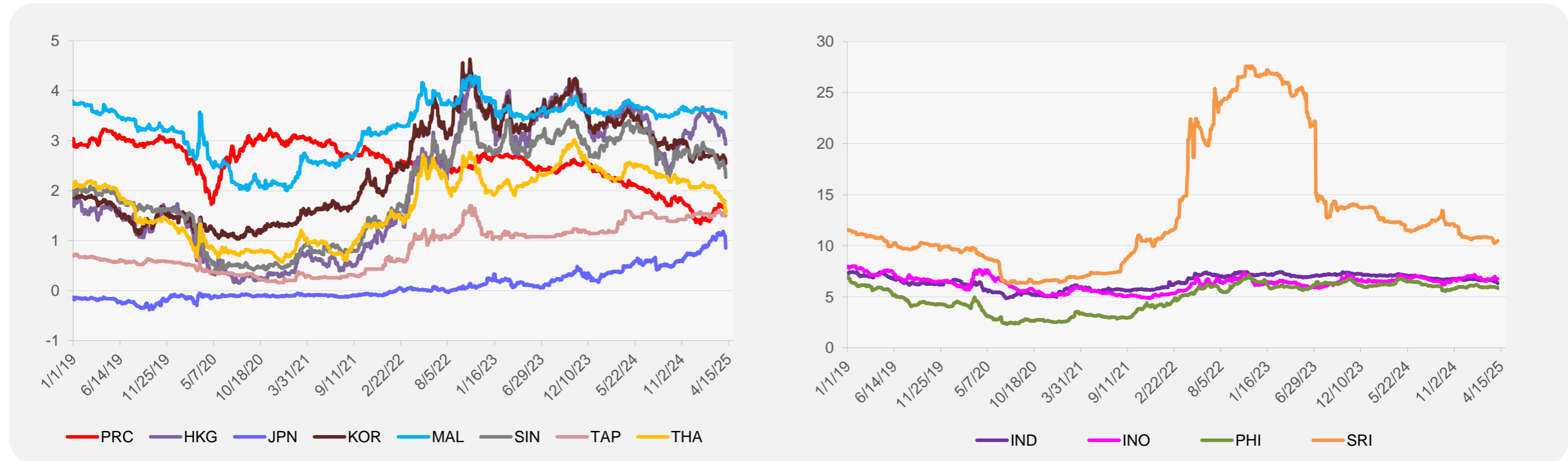
¹ Latest closing price from 2 April 2025.

² Singapore Exchange, Ribbed Smoked Sheet Rubber.

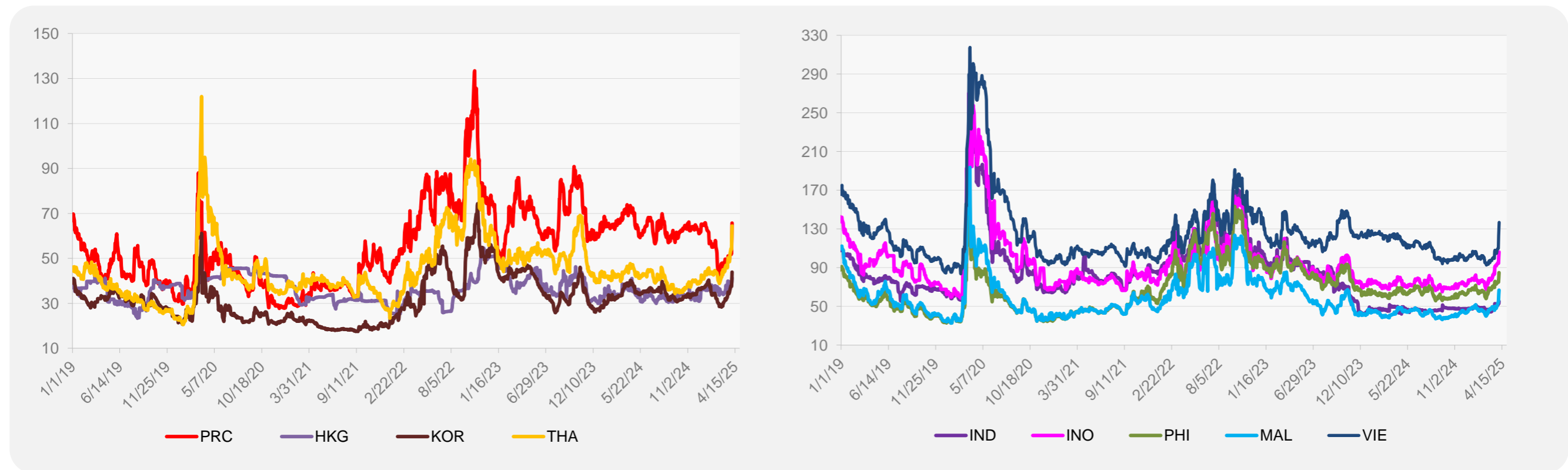


Source: ADB calculations using data from Bloomberg.

5-YEAR LOCAL CURRENCY GOVERNMENT BOND YIELDS (%)



5-YEAR CREDIT DEFAULT SWAP¹



¹ In USD and based on sovereign bonds.
Source: ADB calculations using data from Bloomberg.