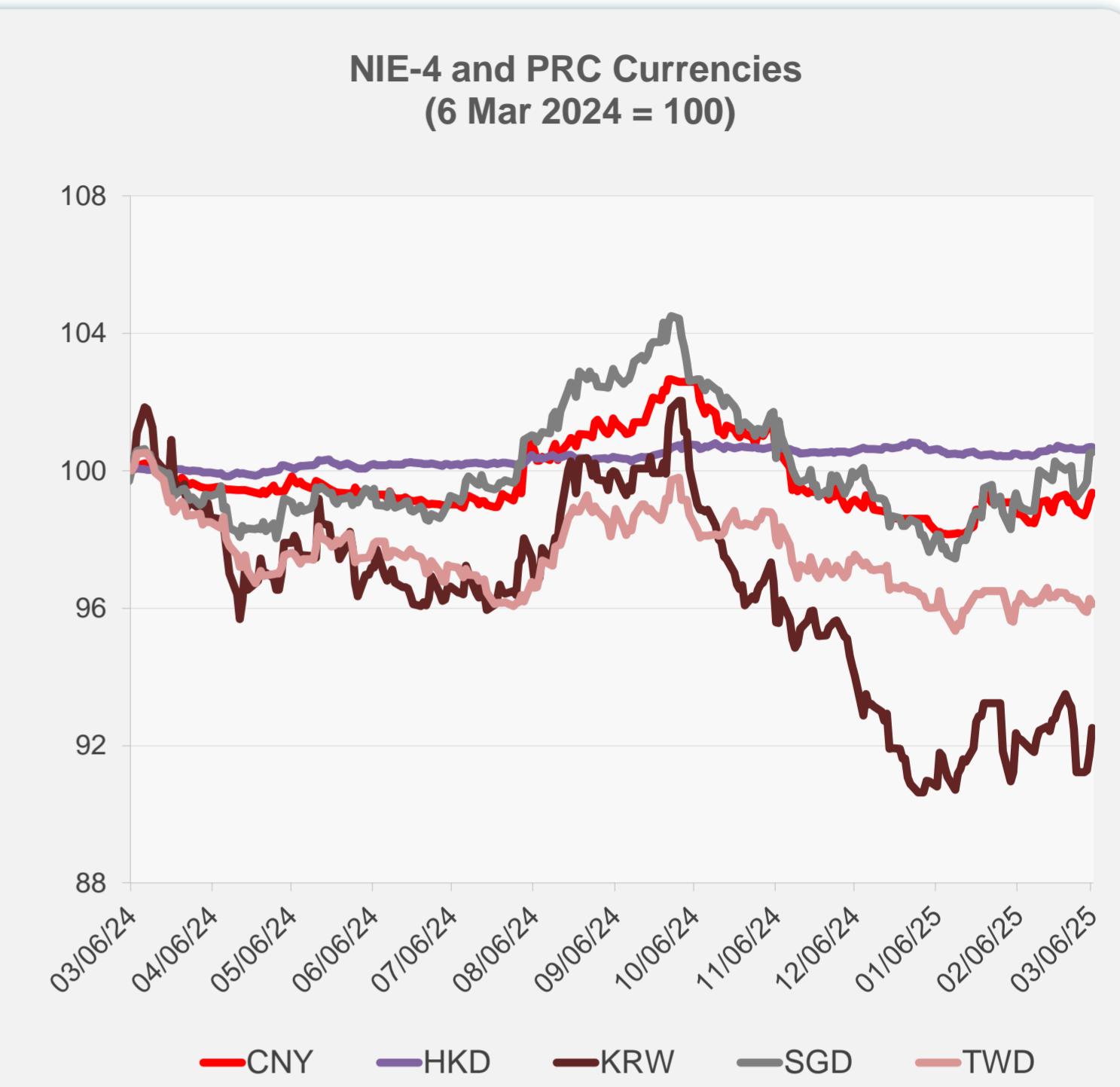


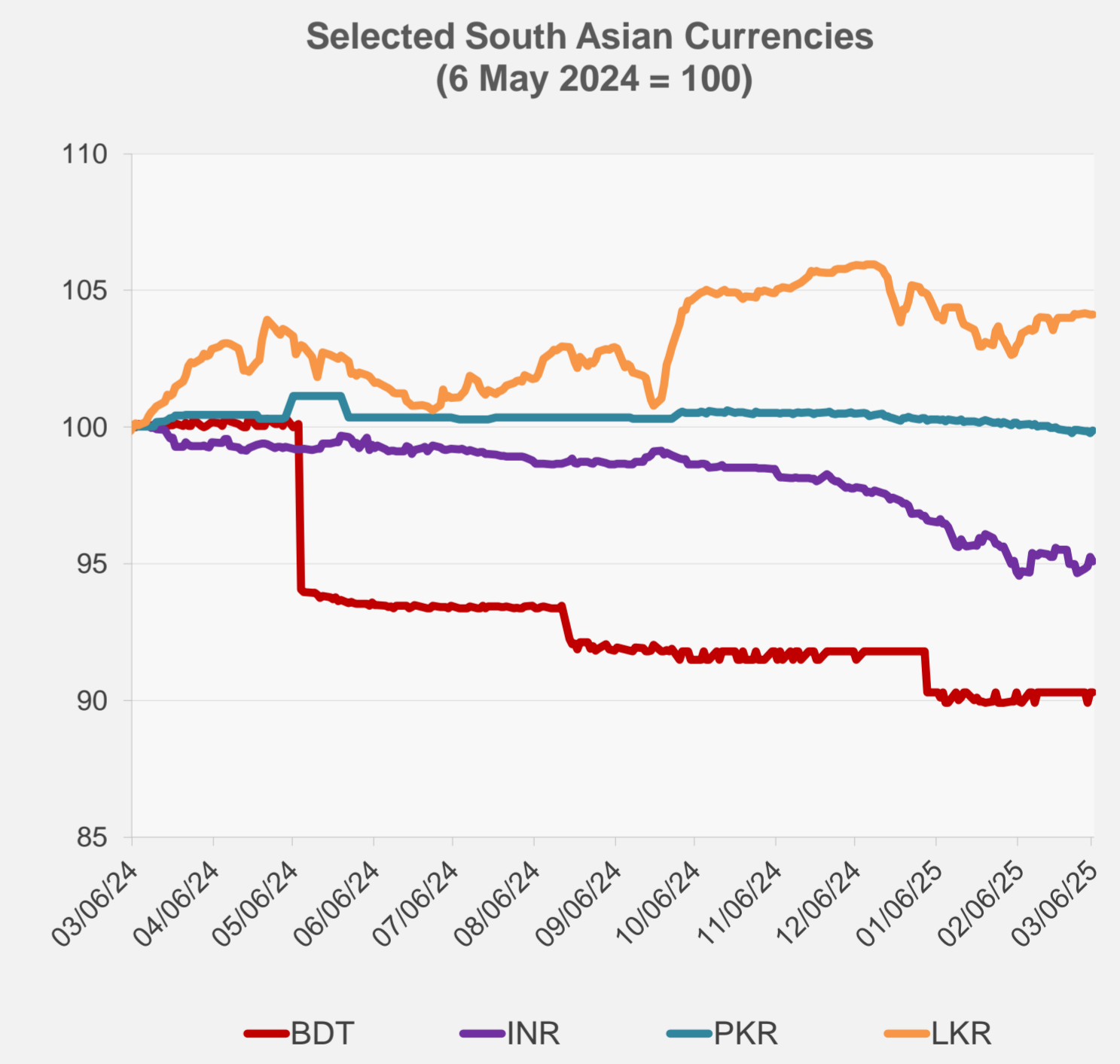
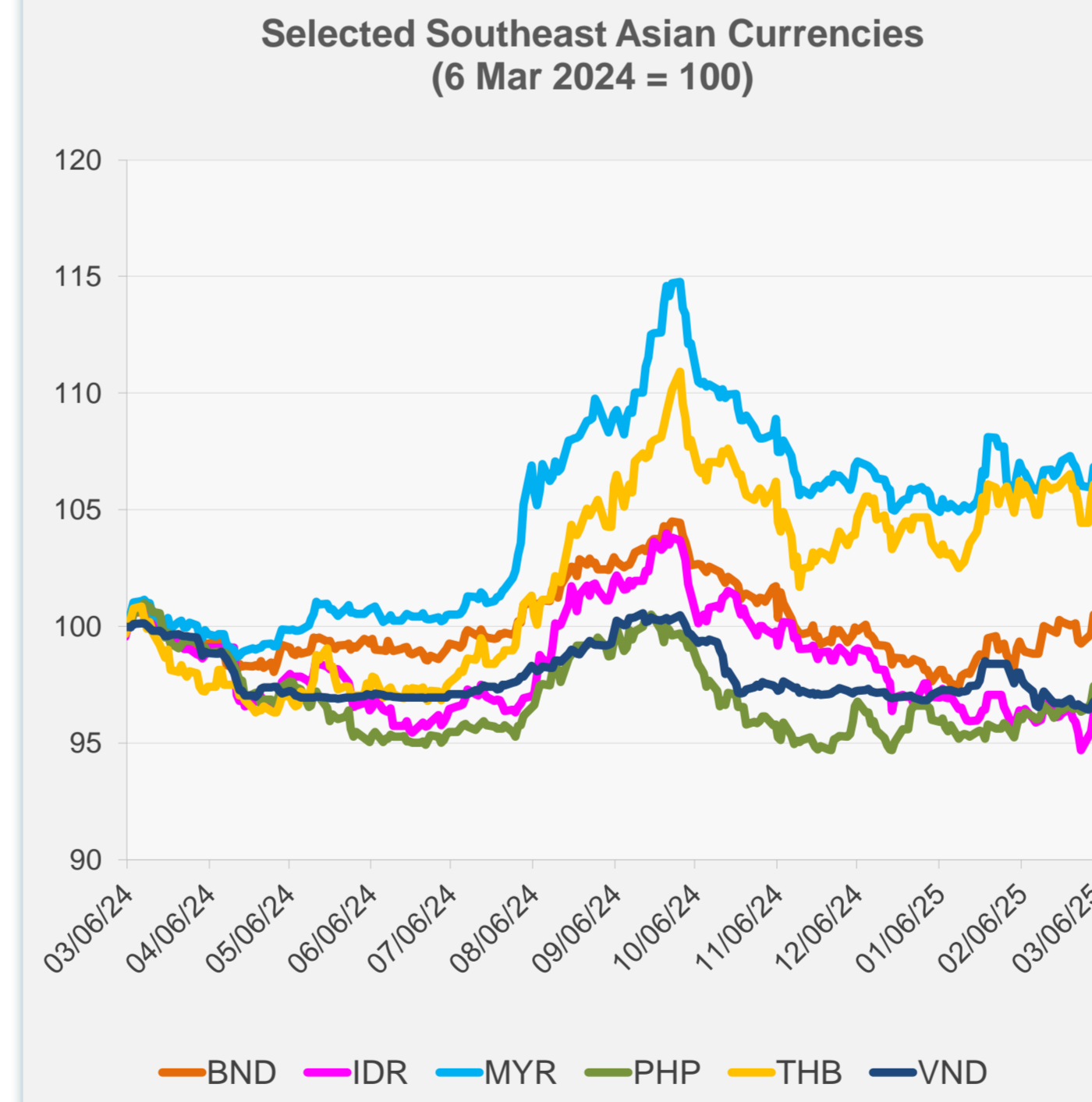
	Latest Closing	% change from Previous Day	% change from 01-Jan-25
Euro	0.92	0.50	4.47
Japanese yen (JPY)	148.23	0.46	6.03
Bangladeshi taka (BDT)	121.50	0.00	-1.65
Brunei dollar (BND)	1.33	0.04	2.45
Chinese yuan (CNY)	7.24	0.20	0.77
Hong Kong dollar (HKD)	7.77	0.01	-0.04
Indian rupee (INR)	87.12	-0.18	-1.73
Indonesian rupiah (IDR)	16,330.00	-0.11	-1.44
Korean won (KRW)	1,442.30	0.85	2.07
Malaysian ringgit (MYR)	4.43	0.05	0.99
Pakistan rupee (PKR)	279.67	0.09	-0.46
Philippine peso (PHP)	57.31	0.07	0.93
Singapore dollar (SGD)	1.33	0.04	2.45
Sri Lanka rupee (LKR)	295.29	-0.01	-0.78
Taipei,China NT dollar (TWD)	32.86	-0.14	-0.23
Thai baht (THB)	33.77	-0.37	0.96
Vietnamese dong (VND)	25,510.00	-0.02	-0.10



Legend: Euro (Green), JPY (Blue)

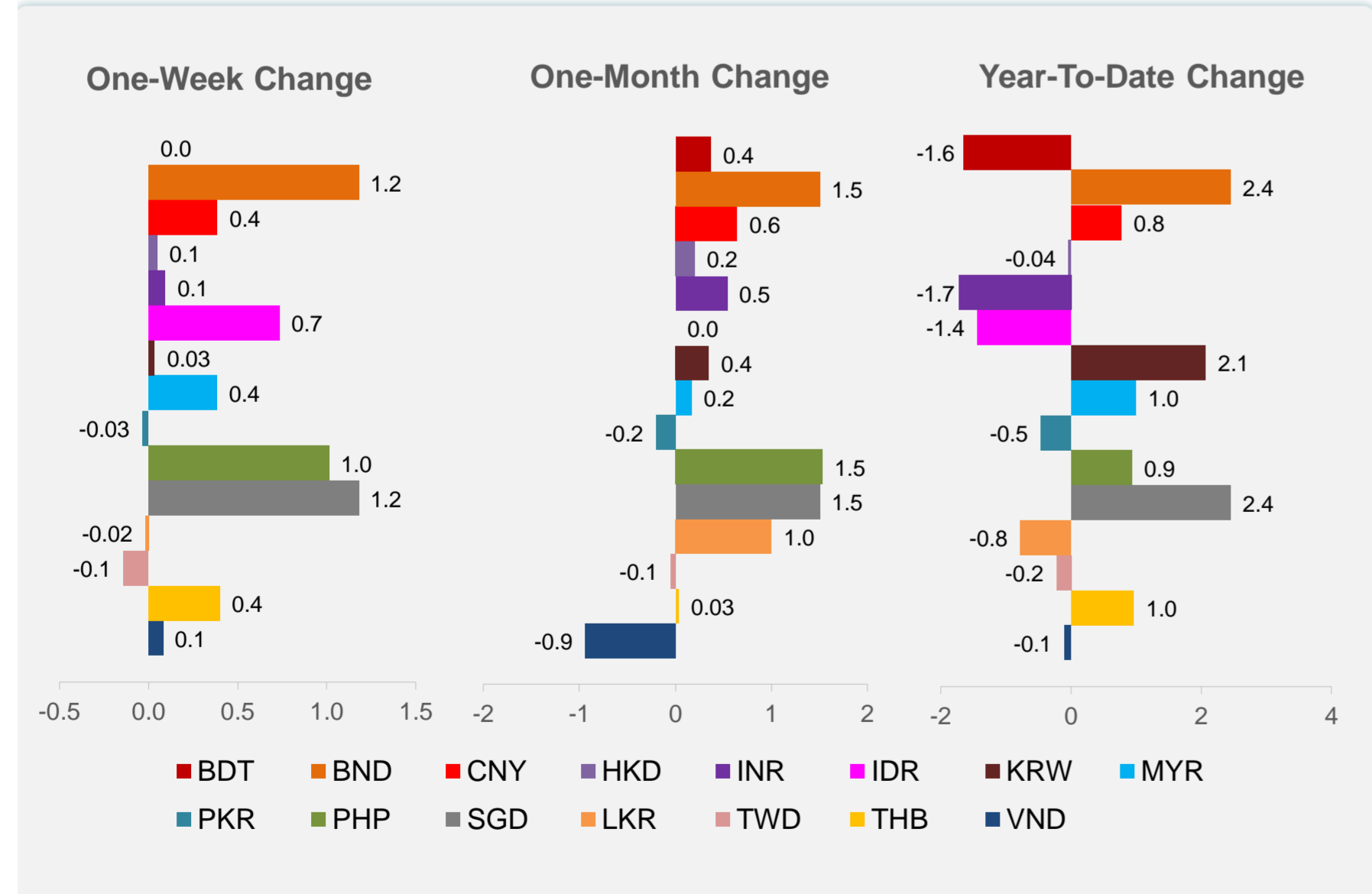
Legend: CNY (Red), HKD (Purple), KRW (Brown), SGD (Grey), TWD (Pink)

NIE = Newly Industrialized Economies

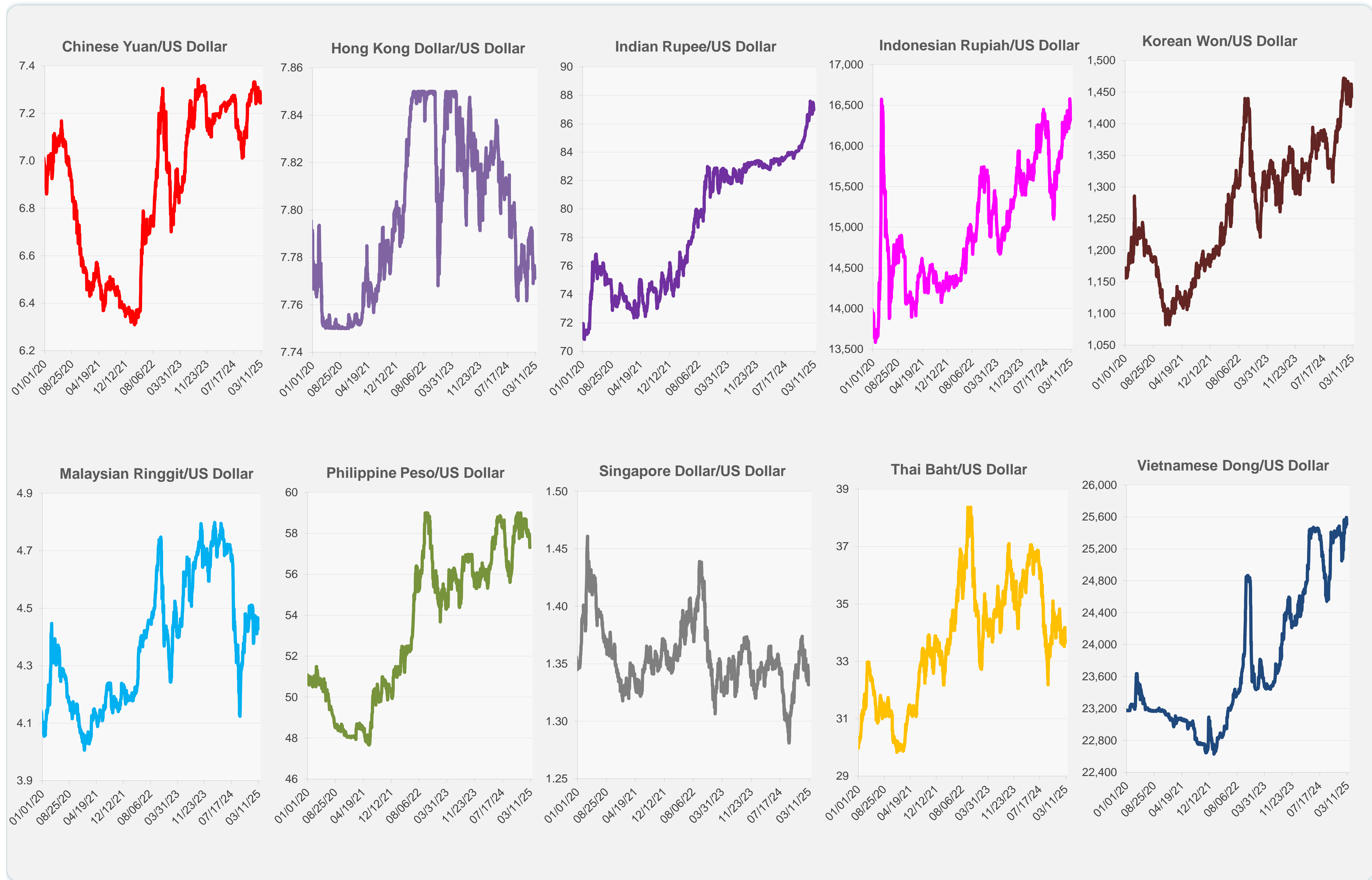


Legend: BND (Orange), IDR (Magenta), MYR (Cyan), PHP (Green), THB (Yellow), VND (Dark Blue)

Legend: BDT (Red), INR (Purple), PKR (Teal), LKR (Orange)



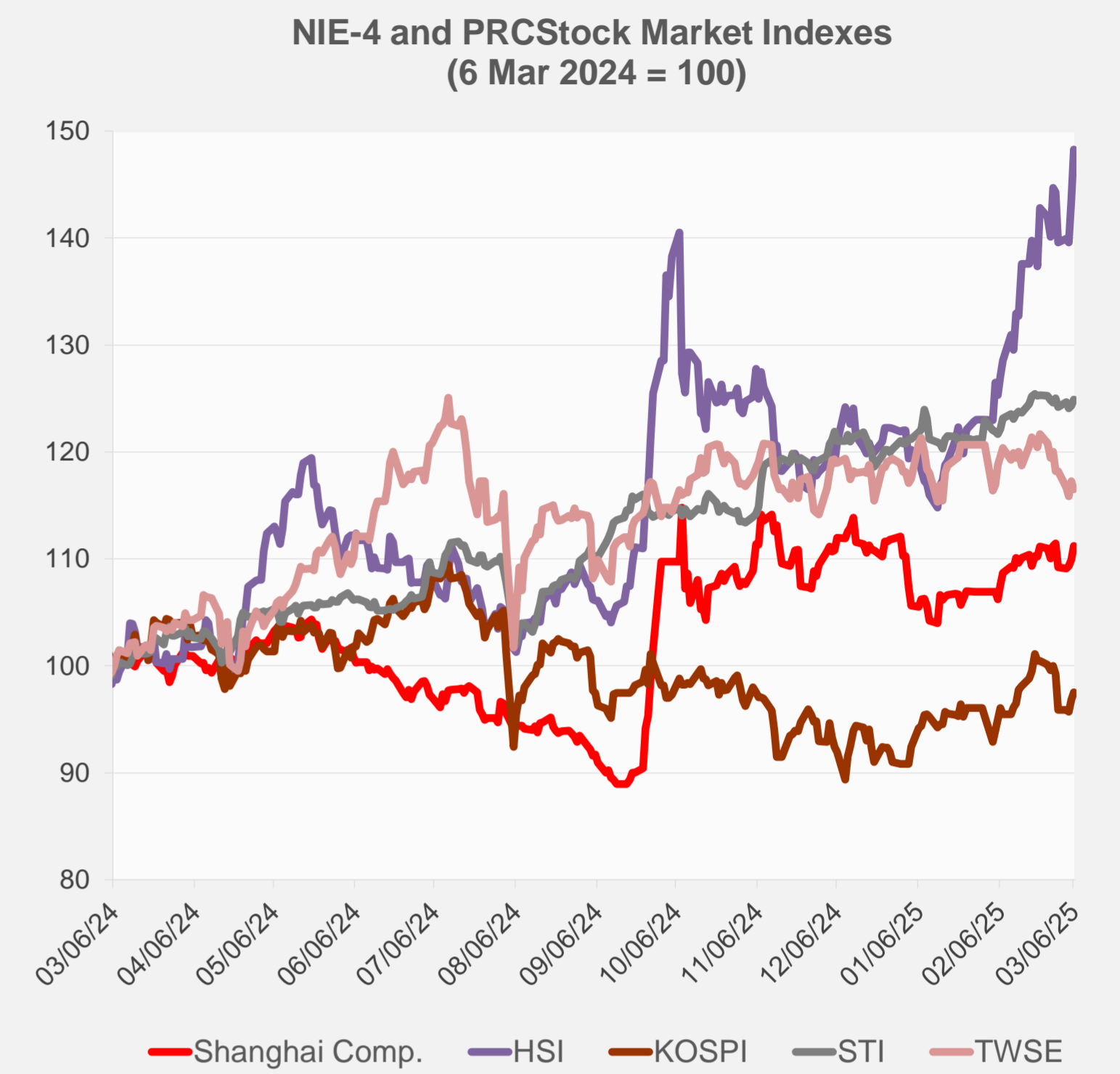
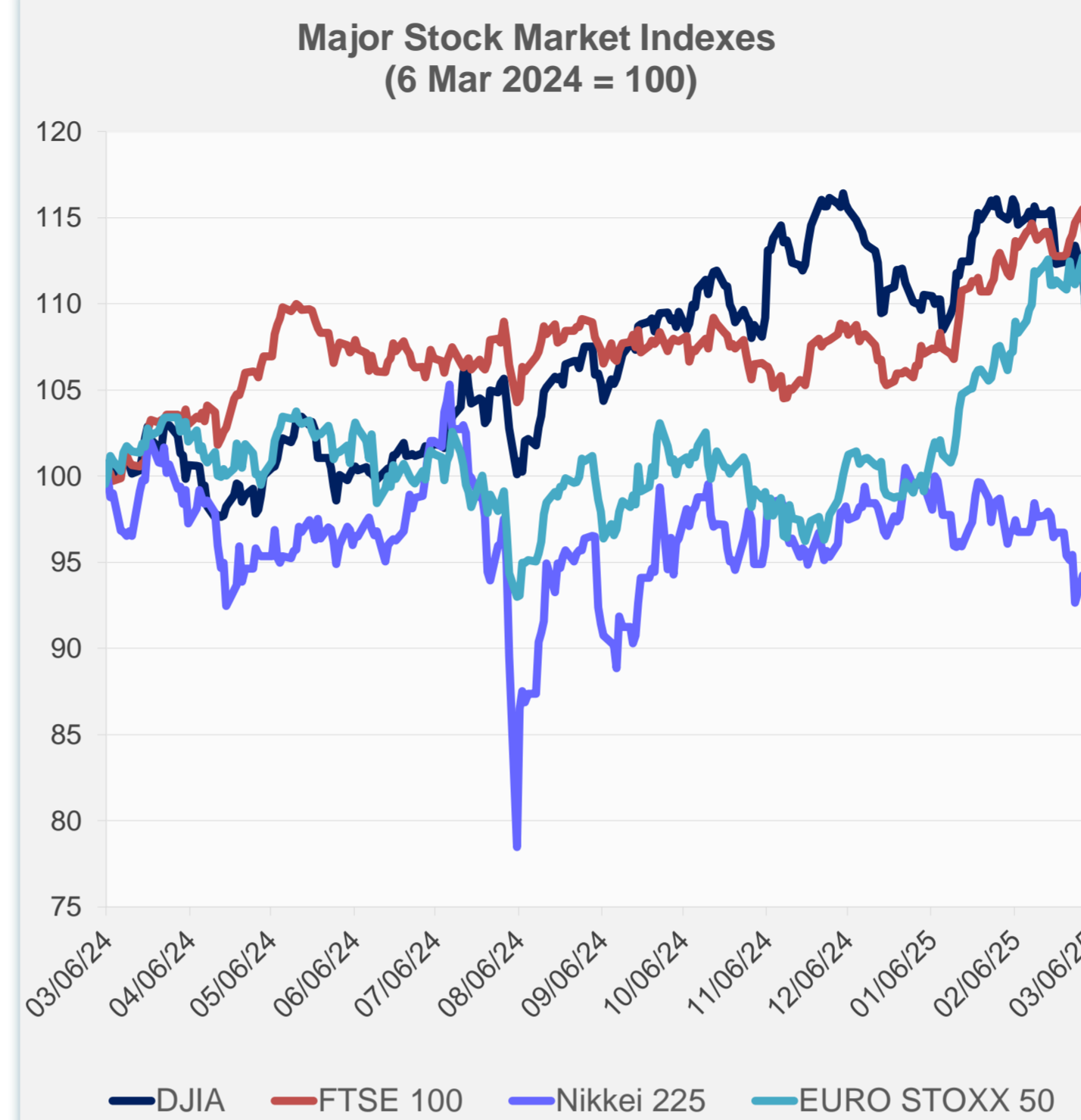
Note: Negative/Decreasing values indicate depreciation of local currency, and positive/increasing values indicate appreciation.
Source: ADB calculations using data from Haver Analytics.



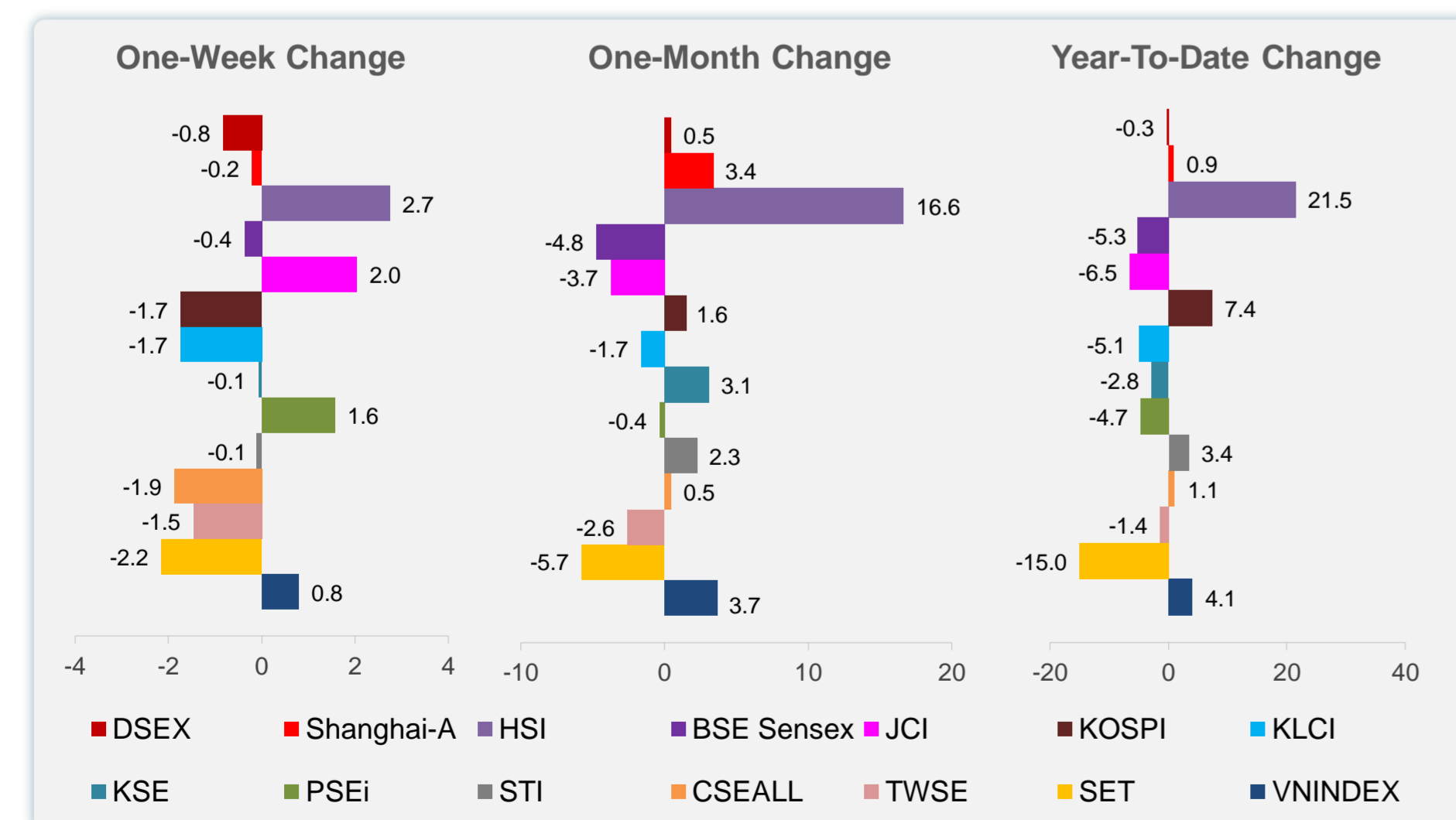
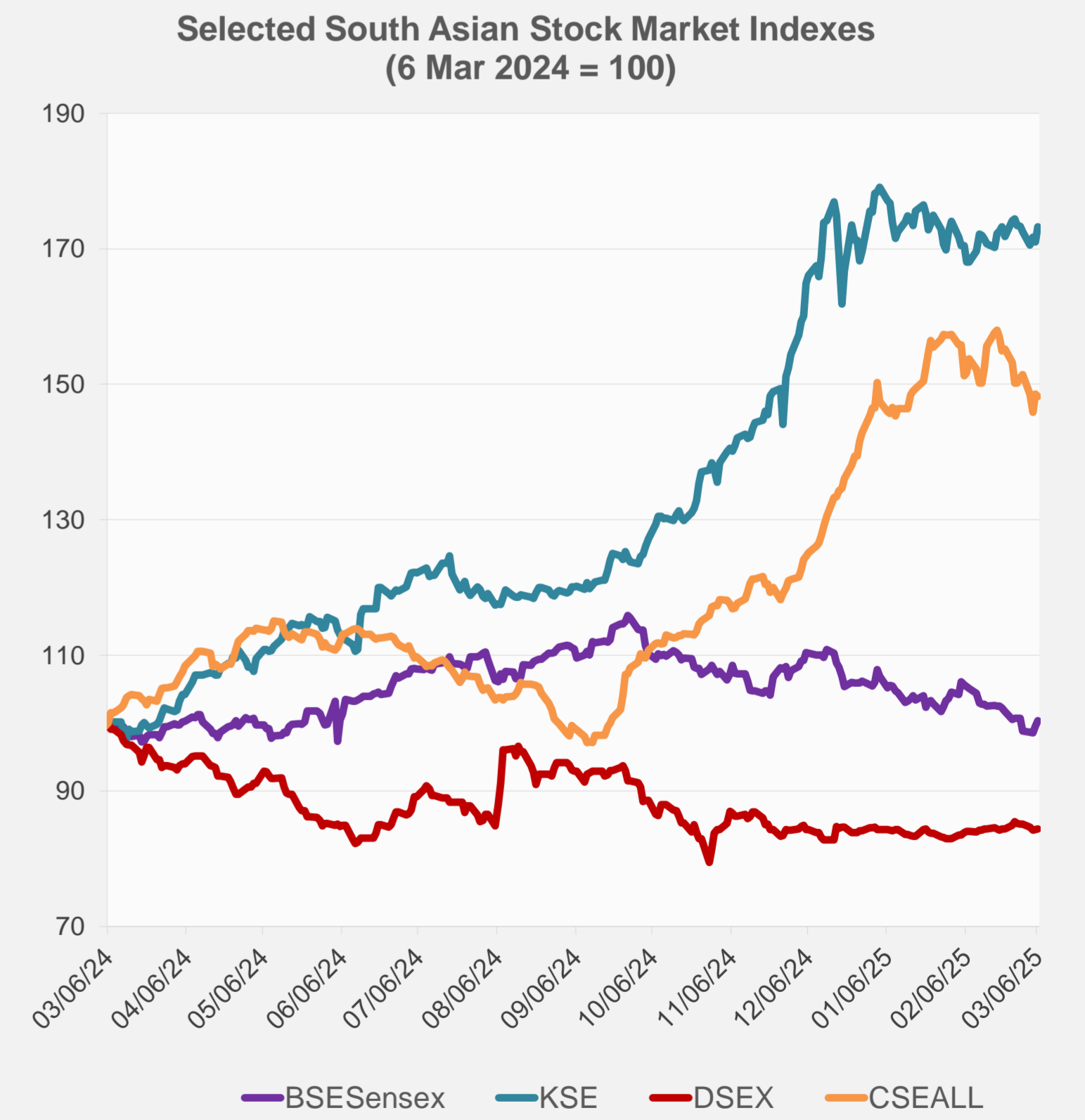
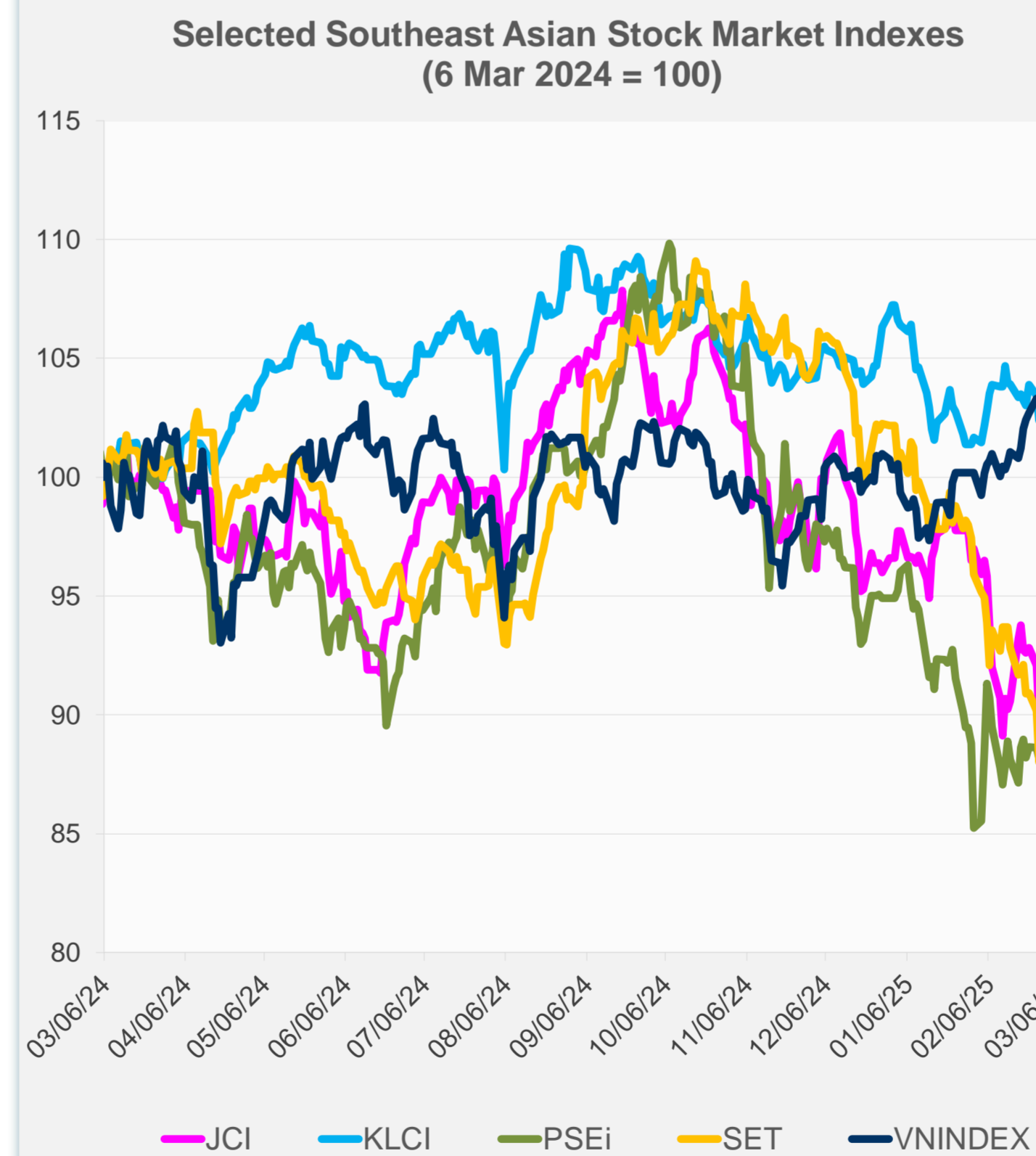
Source: Haver Analytics.

Daily Market Watch
STOCK INDEXES

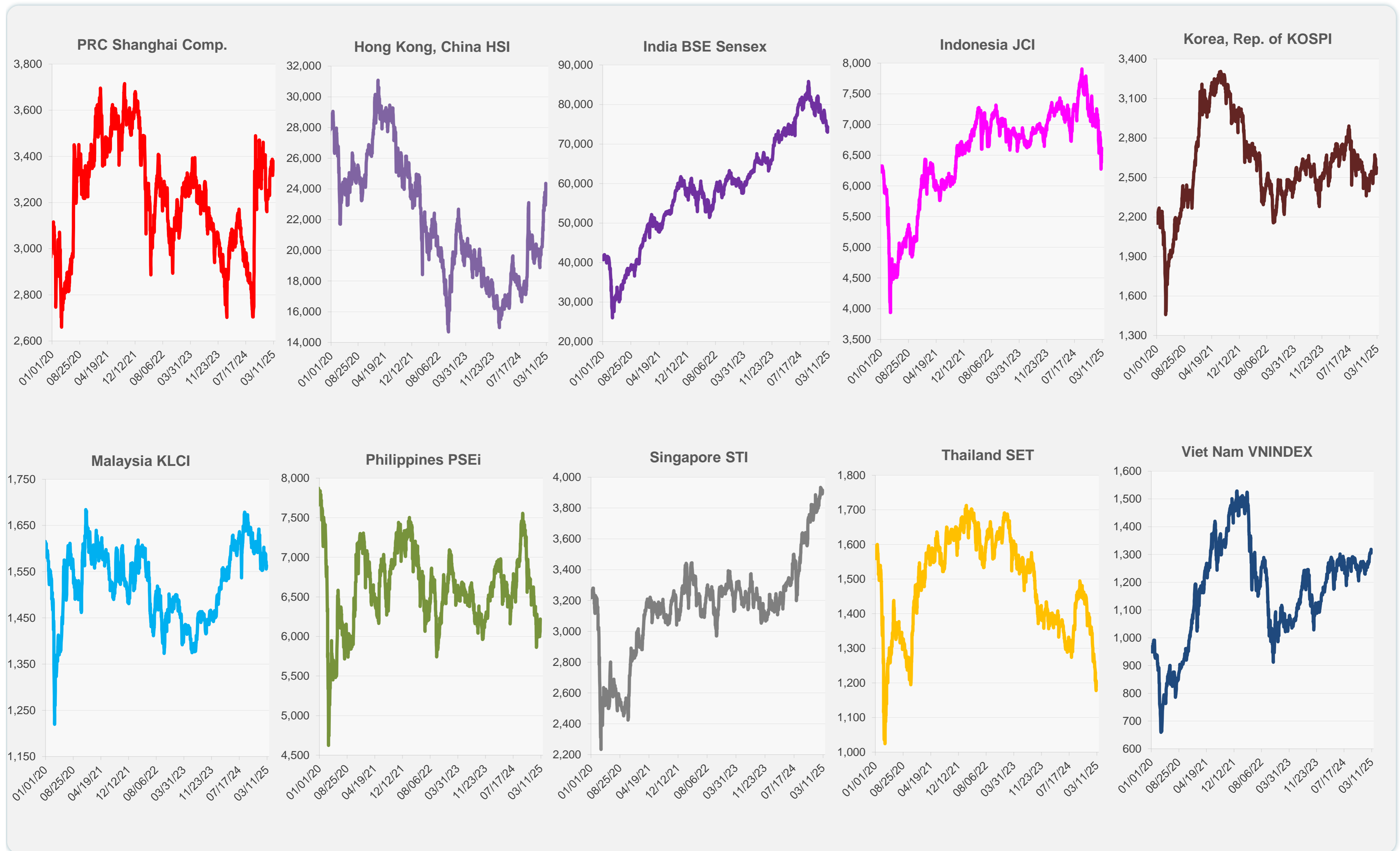
	Latest Closing	% change from Previous Day	% change from 01-Jan-25
US Dow Jones Ind Avg	42,579.08	-0.99	0.08
US NASDAQ	18,069.26	-2.61	-6.43
US S&P 500	5,738.52	-1.78	-2.43
UK FTSE 100	8,682.84	-0.83	6.24
EURO STOXX 50	5,520.47	0.57	12.76
Japan NIKKEI 225	37,704.93	0.77	-5.49
Bangladesh DSEX	5,203.96	0.14	-0.27
PRC Shanghai Comp.	3,381.10	1.17	0.88
Hong Kong, China HSI	24,369.71	3.29	21.48
India BSE Sensex	74,340.09	0.83	-5.31
Indonesia JCI	6,617.85	1.32	-6.53
Korea, Rep. of KOSPI	2,576.16	0.70	7.36
Malaysia KLCI	1,558.91	-0.35	-5.08
Pakistan KSE 100	113,713.17	1.30	-2.82
Philippines PSEi	6,219.96	1.60	-4.73
Singapore STI	3,917.06	0.48	3.42
Sri Lanka CSEALL	16,123.10	-0.27	1.12
Taipei, China TWSE	22,715.43	-0.68	-1.39
Thailand SET	1,189.55	-1.44	-15.04
Viet Nam VNINDEX	1,318.22	1.04	4.06



NIE = Newly Industrialized Economies



Sources: ADB calculations using data from CEIC Data Company and Haver Analytics.



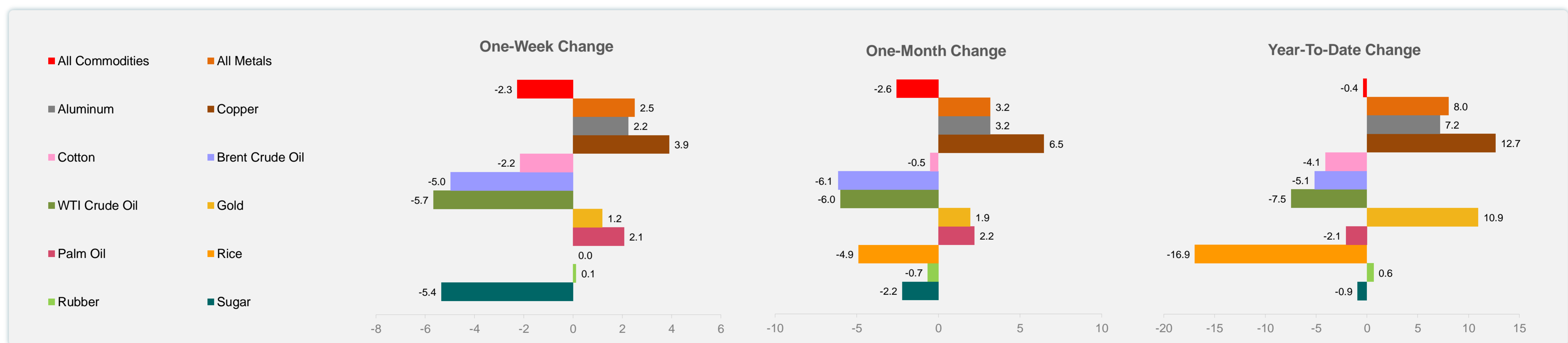
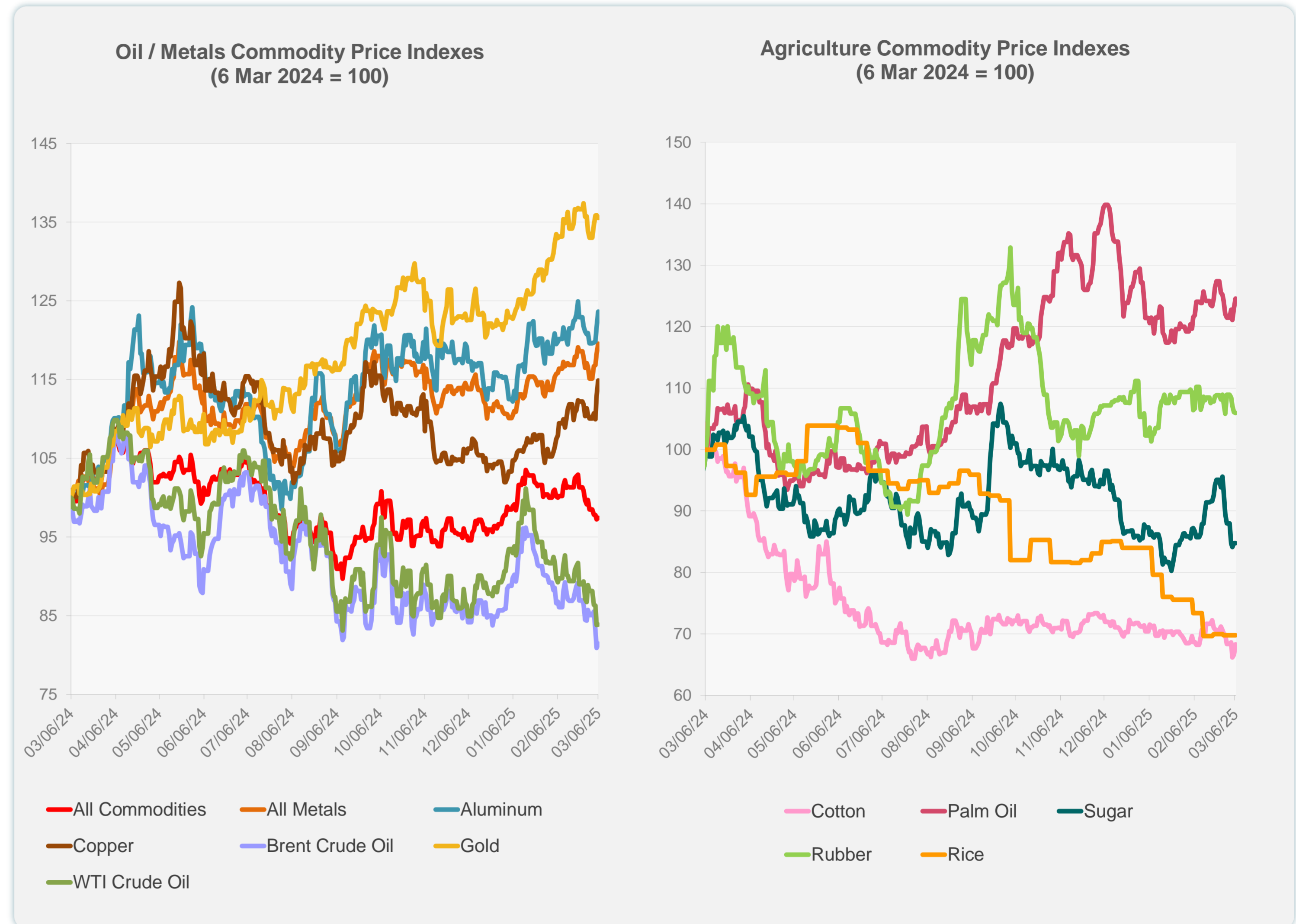
Sources: CEIC Data Company and Haver Analytics.

Daily Market Watch
COMMODITY PRICES

	Unit	Latest Closing	% change from Previous Day	% change from 01-Jan-25
S&P All Commodities	US\$	547.53	0.20	-0.38
S&P All Metals	US\$	332.06	1.06	8.03
Aluminum	US\$/metric ton	2,708.39	1.59	7.19
Copper	US\$/metric ton	9,747.77	1.68	12.66
Cotton	US cents/lb	63.21	2.50	-4.08
Brent Crude Oil	US\$/barrel	70.29	0.68	-5.15
WTI Crude Oil	US\$/barrel	66.36	0.08	-7.47
Gold	US\$/troy oz	2,911.80	-0.26	10.95
Palm Oil	US\$/metric tonne	1,077.39	1.27	-2.07
Rice ¹	US\$/metric ton	446.00	0.00	-16.95
Rubber ²	US\$/kg	238.30	-0.13	0.63
Sugar	US cents/lb	18.03	0.00	-0.93

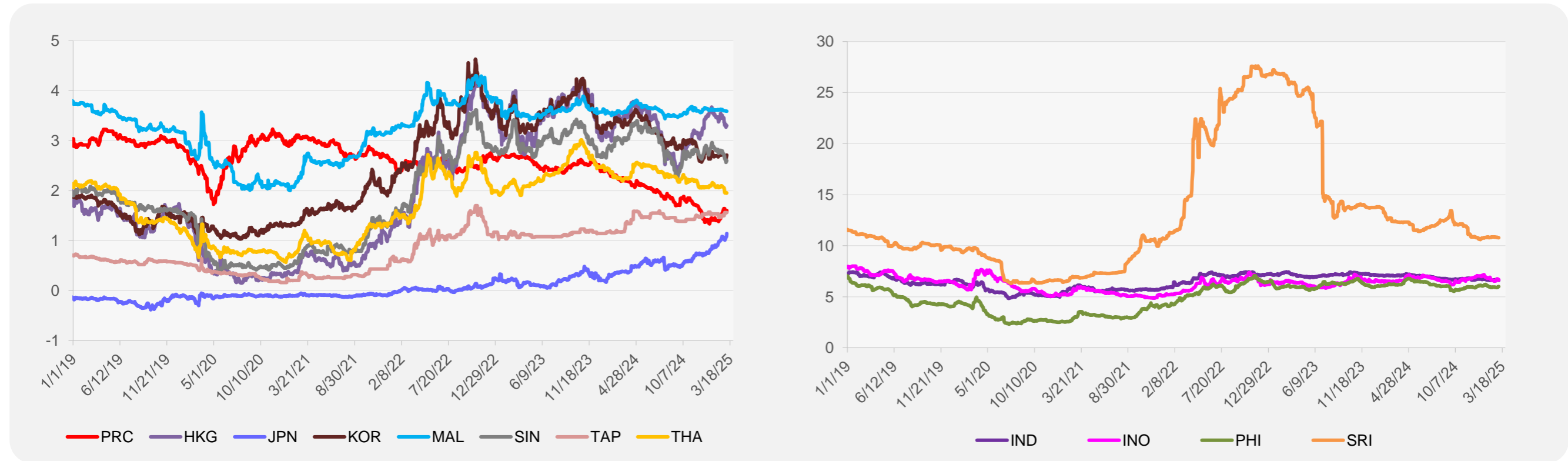
¹ Latest closing price from 26 February 2025.

² Singapore Exchange, Ribbed Smoked Sheet Rubber.

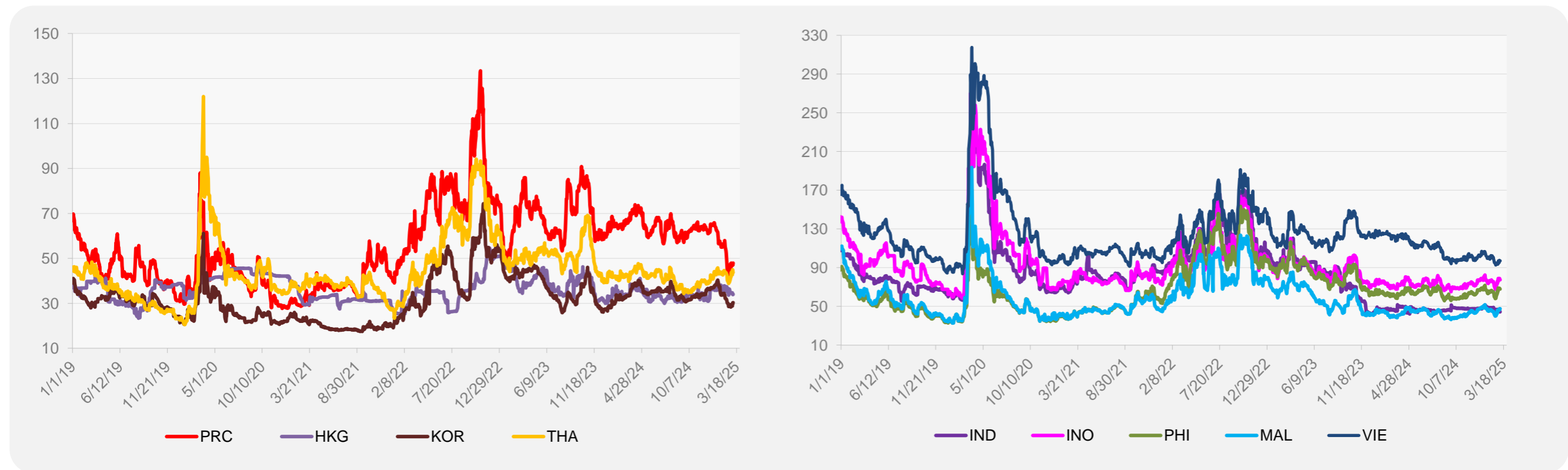


Source: ADB calculations using data from Bloomberg.

5-YEAR LOCAL CURRENCY GOVERNMENT BOND YIELDS (%)



5-YEAR CREDIT DEFAULT SWAP¹



¹ In USD and based on sovereign bonds.
Source: ADB calculations using data from Bloomberg.