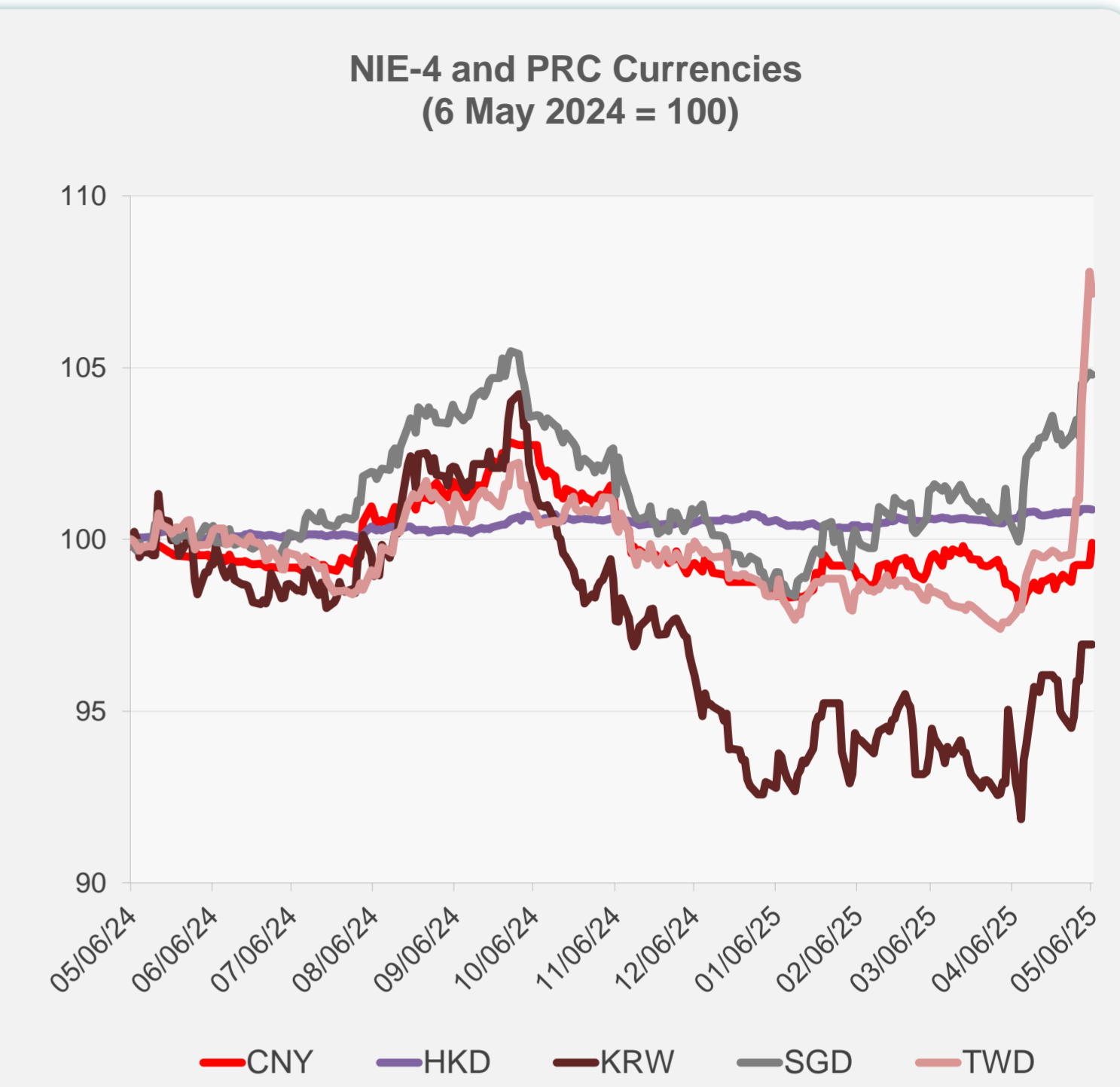
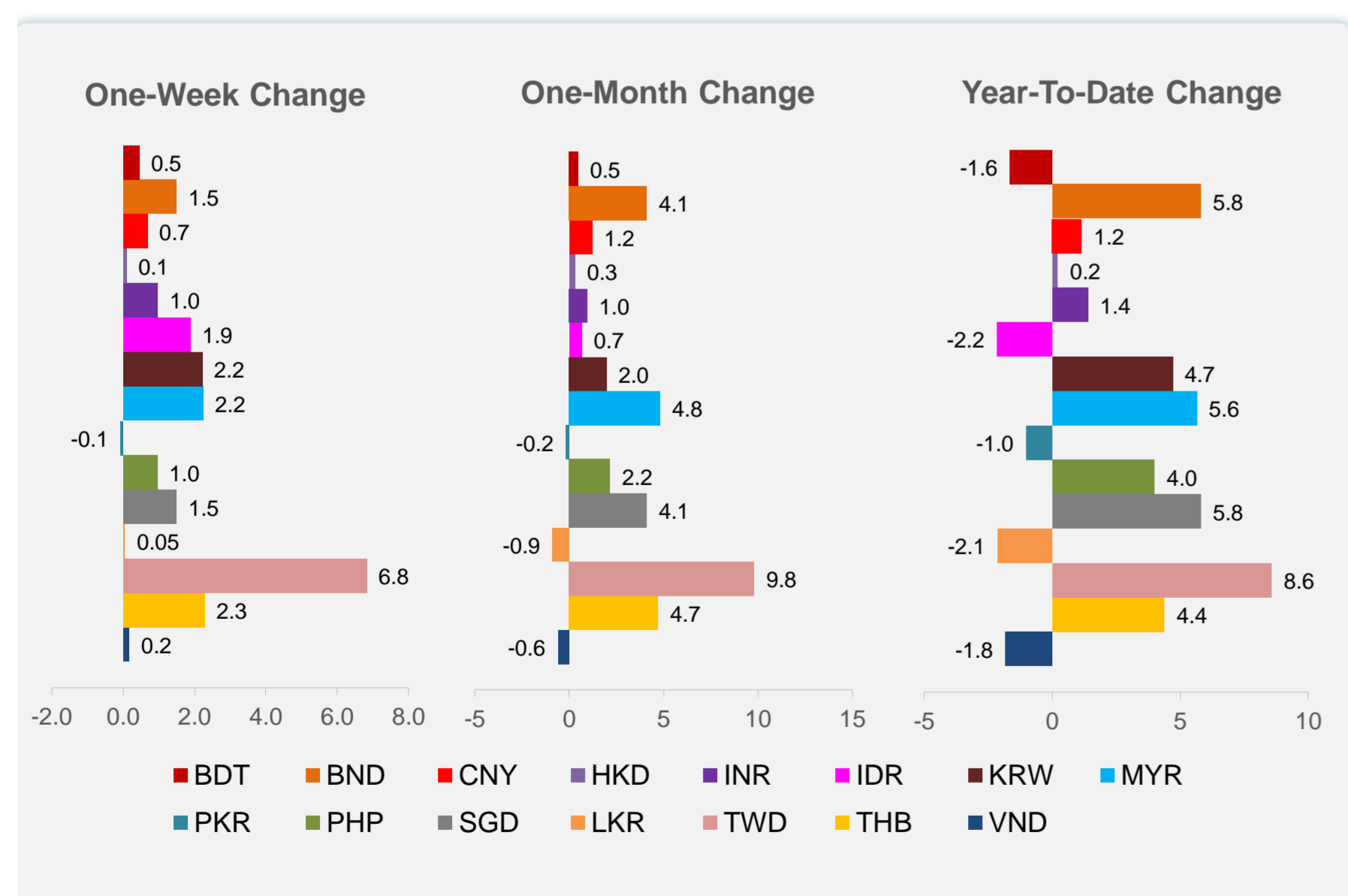
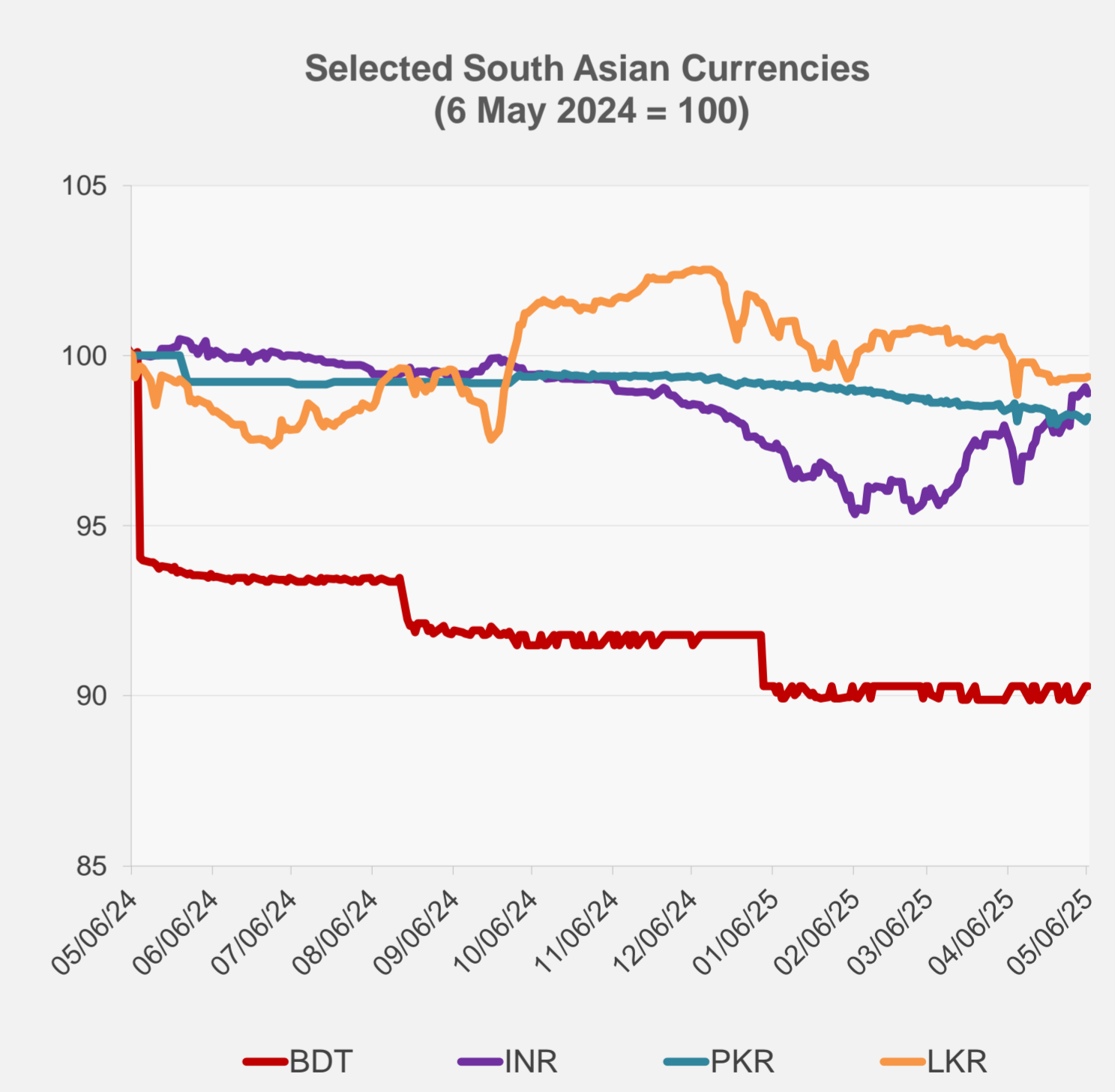
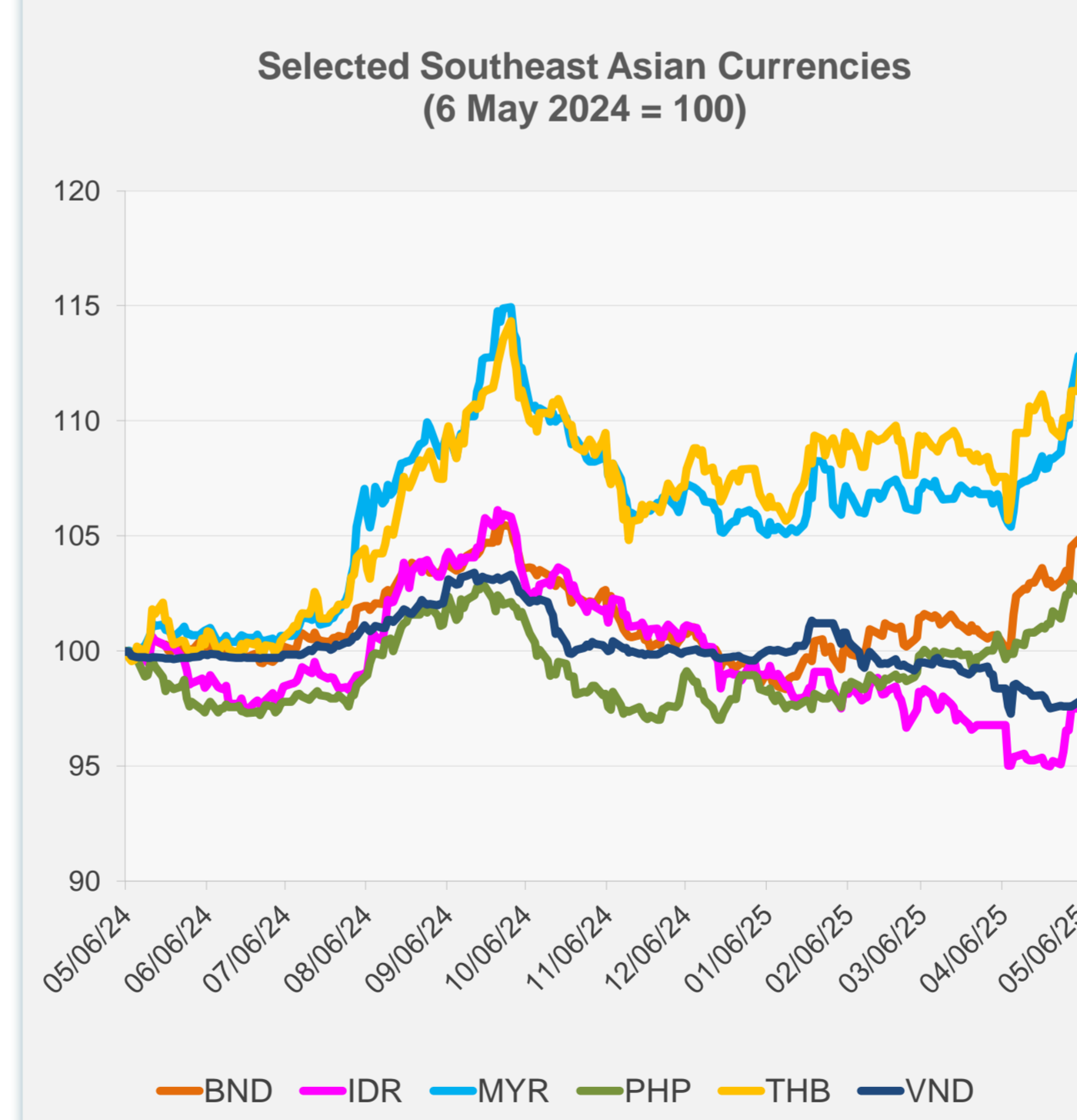


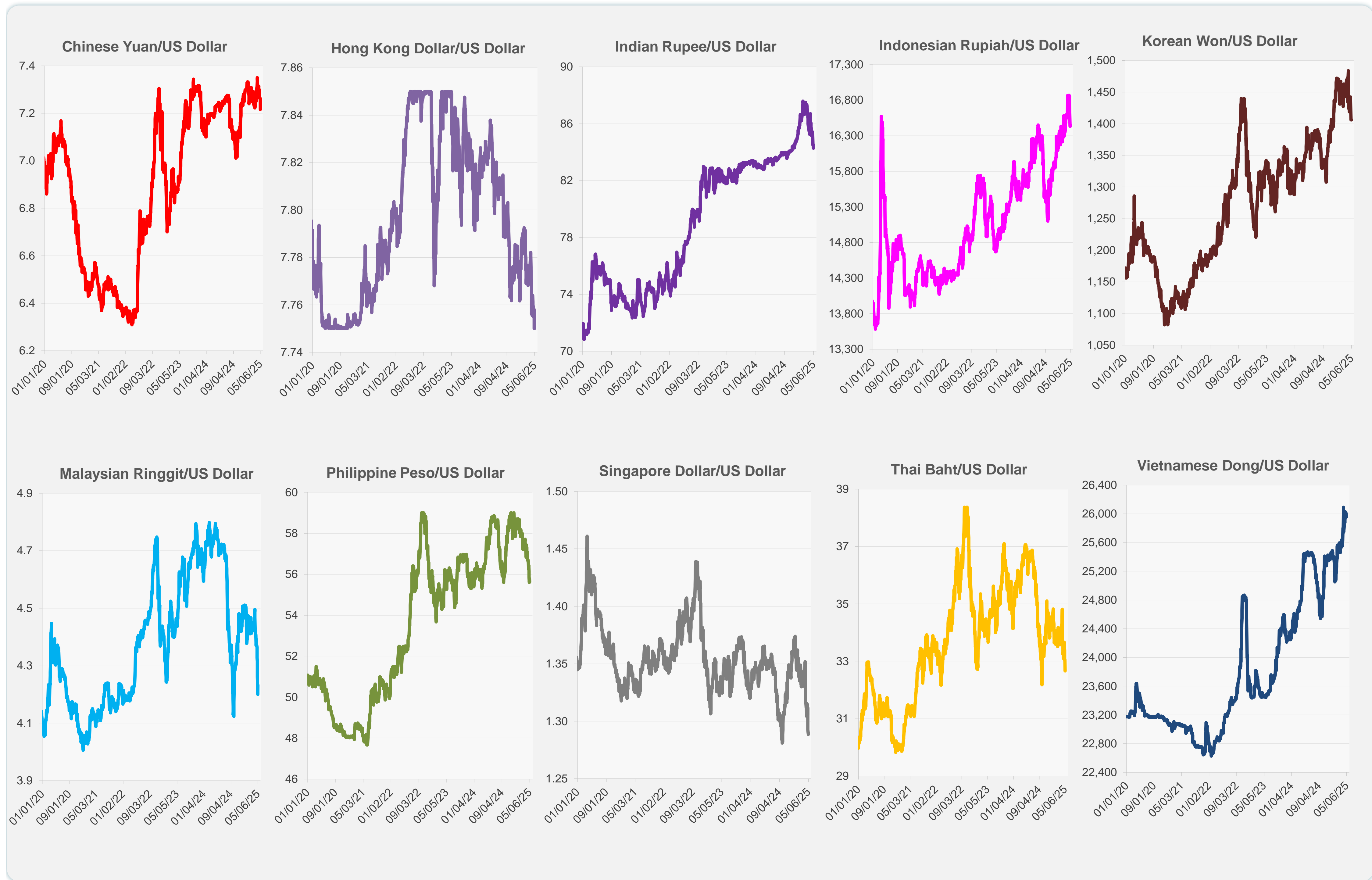
	Latest Closing	% change from Previous Day	% change from 01-Jan-25
Euro	0.88	0.03	9.54
Japanese yen (JPY)	142.84	0.65	10.03
Bangladeshi taka (BDT)	121.50	0.00	-1.65
Brunei dollar (BND)	1.29	-0.06	5.80
Chinese yuan (CNY)	7.22	0.65	1.15
Hong Kong dollar (HKD)	7.75	-0.01	0.22
Indian rupee (INR)	84.44	-0.19	1.40
Indonesian rupiah (IDR)	16,450.00	-0.09	-2.16
Korean won (KRW)	1,406.10	0.00	4.70
Malaysian ringgit (MYR)	4.23	-0.77	5.65
Pakistan rupee (PKR)	281.24	0.13	-1.02
Philippine peso (PHP)	55.62	0.29	4.00
Singapore dollar (SGD)	1.29	-0.06	5.80
Sri Lanka rupee (LKR)	299.37	0.05	-2.13
Taipei,China NT dollar (TWD)	30.20	-0.60	8.58
Thai baht (THB)	32.66	1.20	4.39
Vietnamese dong (VND)	25,959.00	-0.02	-1.83



NIE = Newly Industrialized Economies



Note: Negative/Decreasing values indicate depreciation of local currency, and positive/increasing values indicate appreciation.
Source: ADB calculations using data from Haver Analytics.

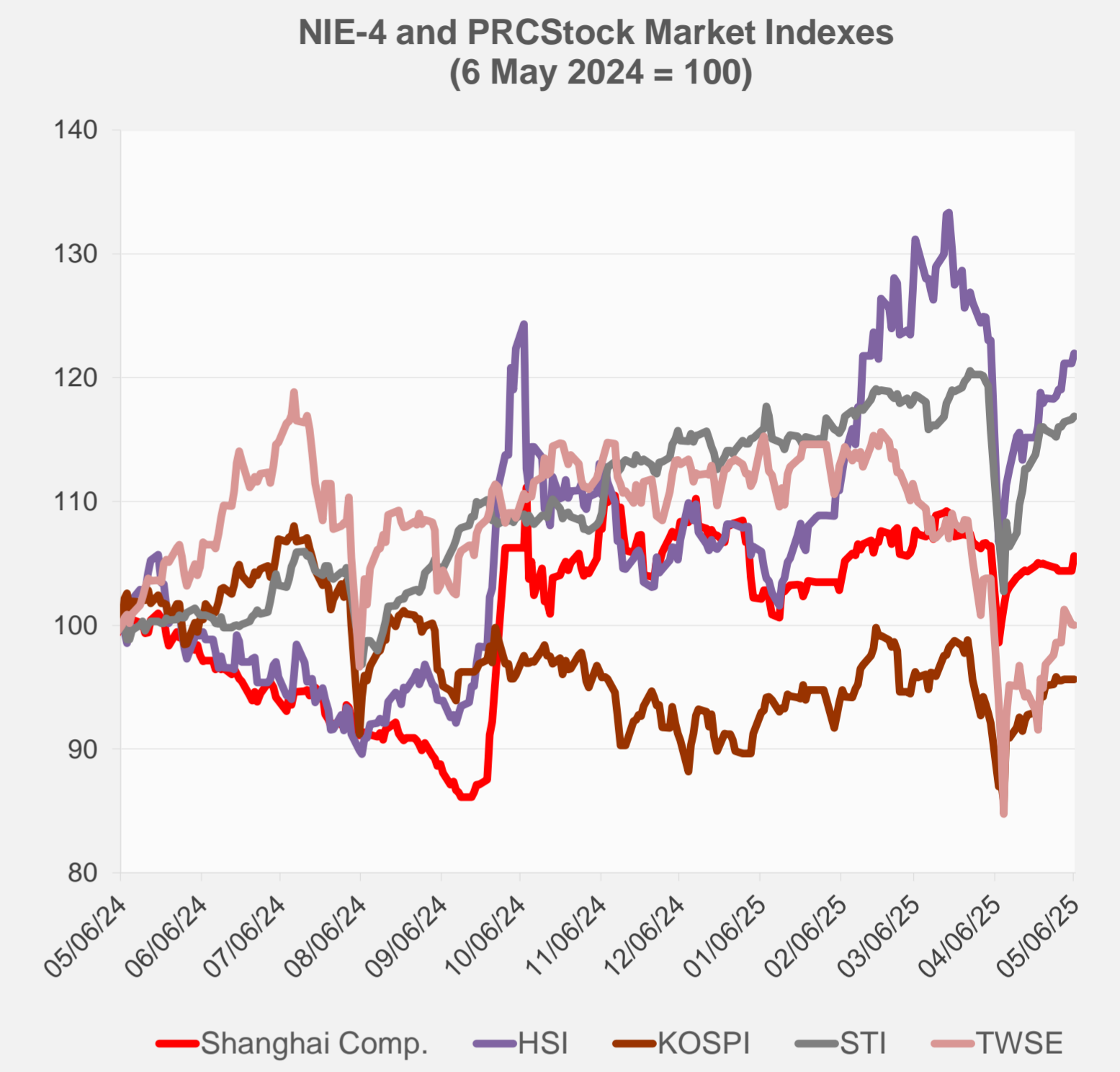
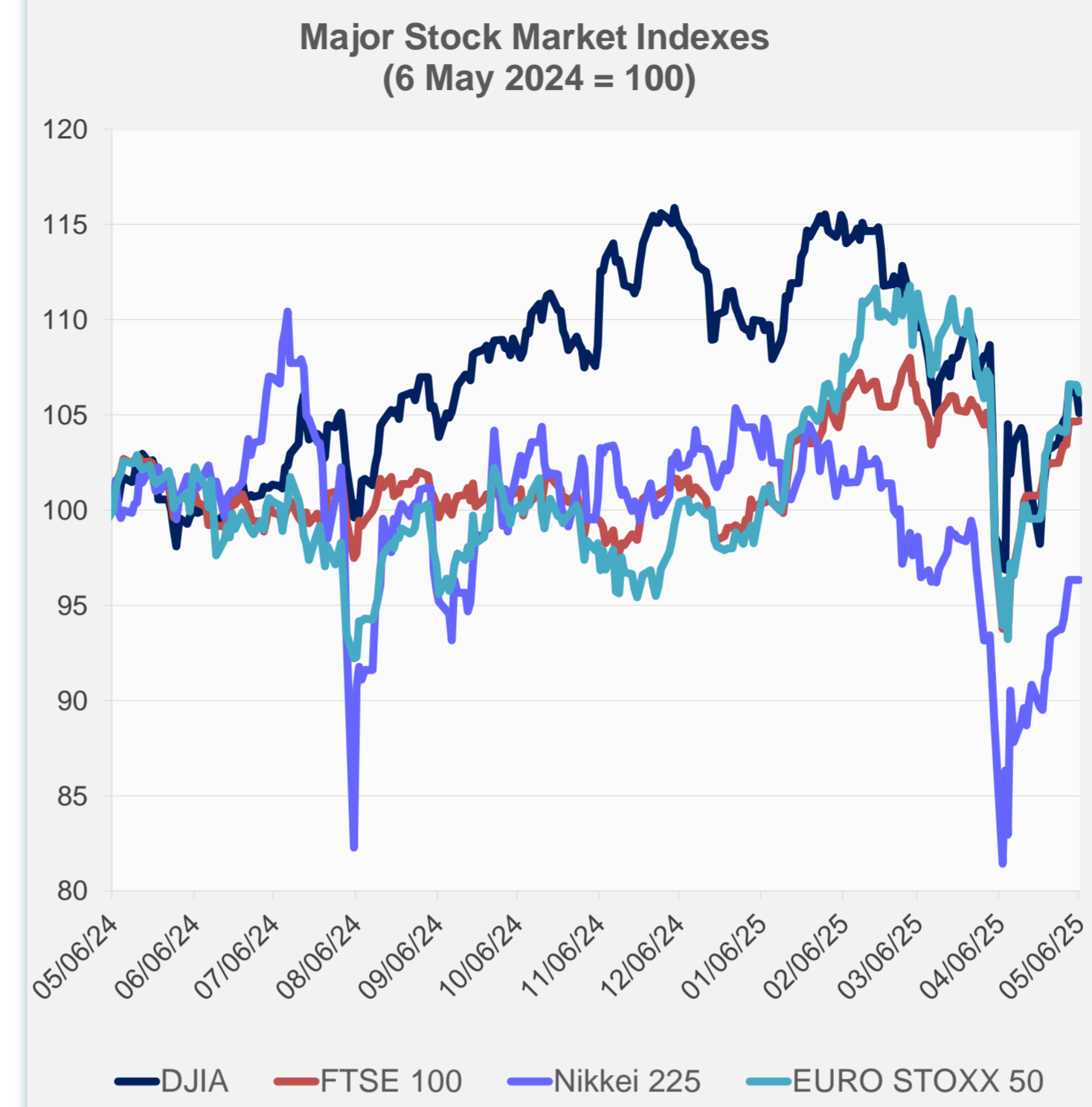


Source: Haver Analytics.

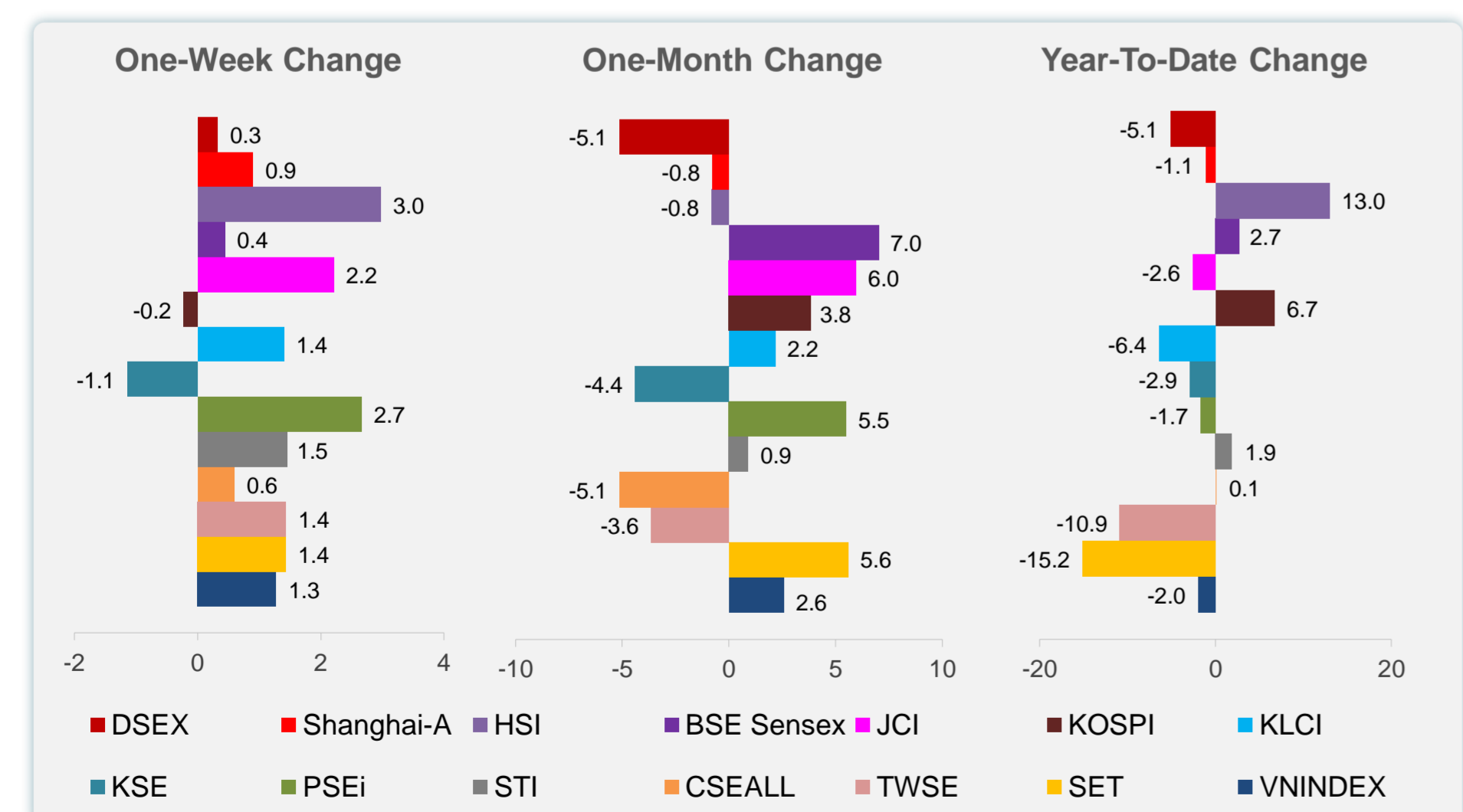
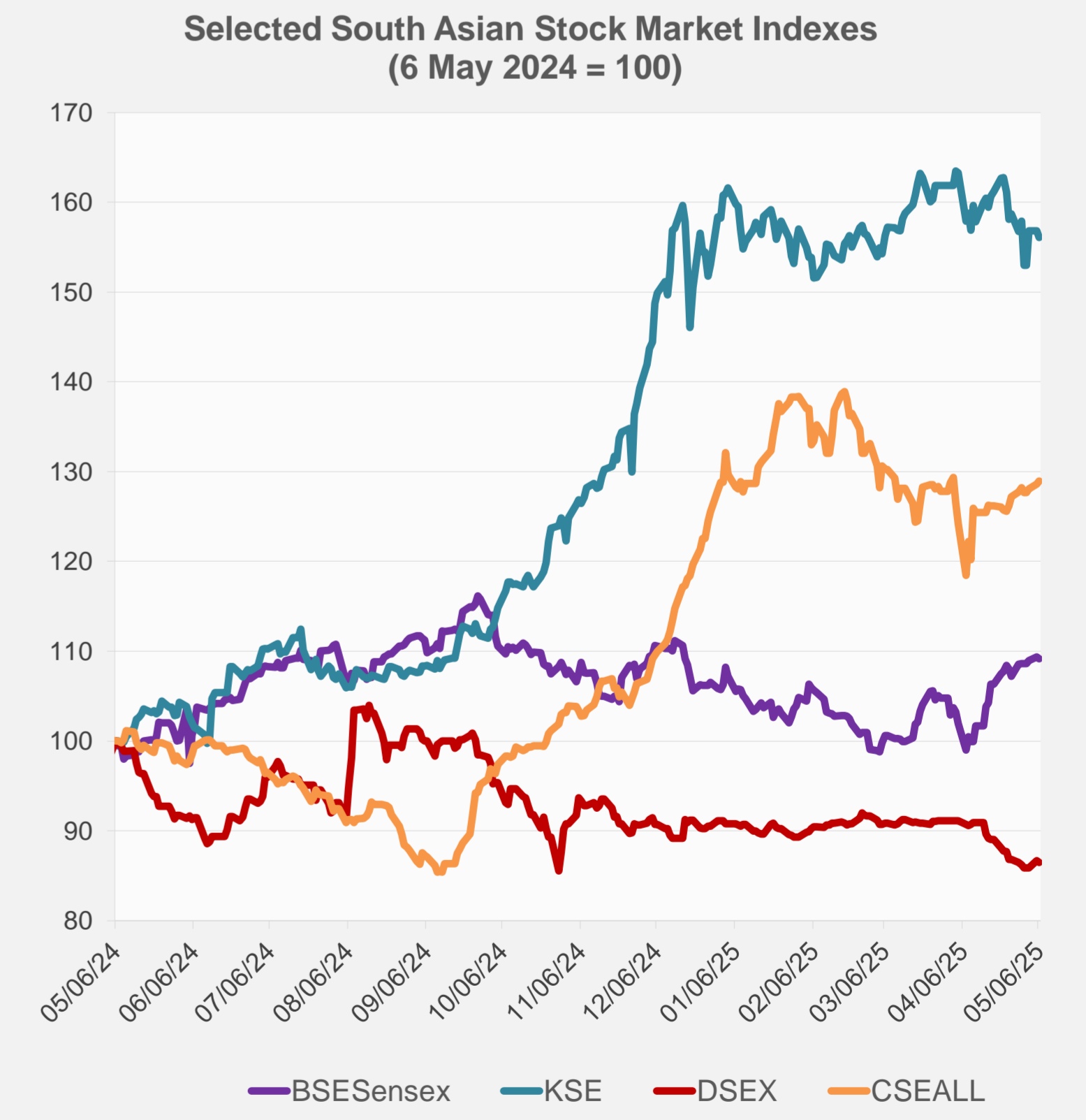
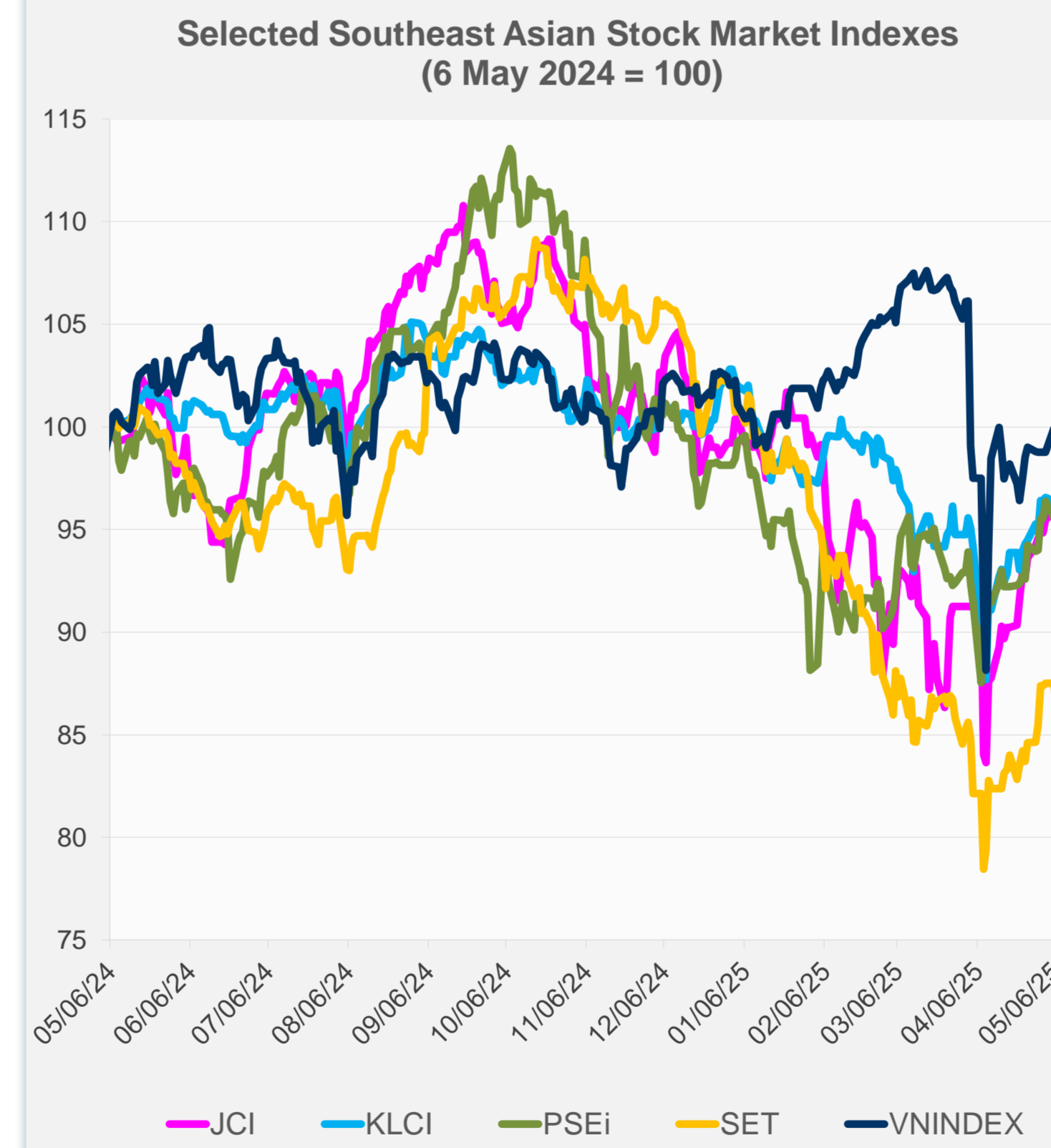
Daily Market Watch STOCK INDEXES

7 May 2025, 9:00 AM Manila

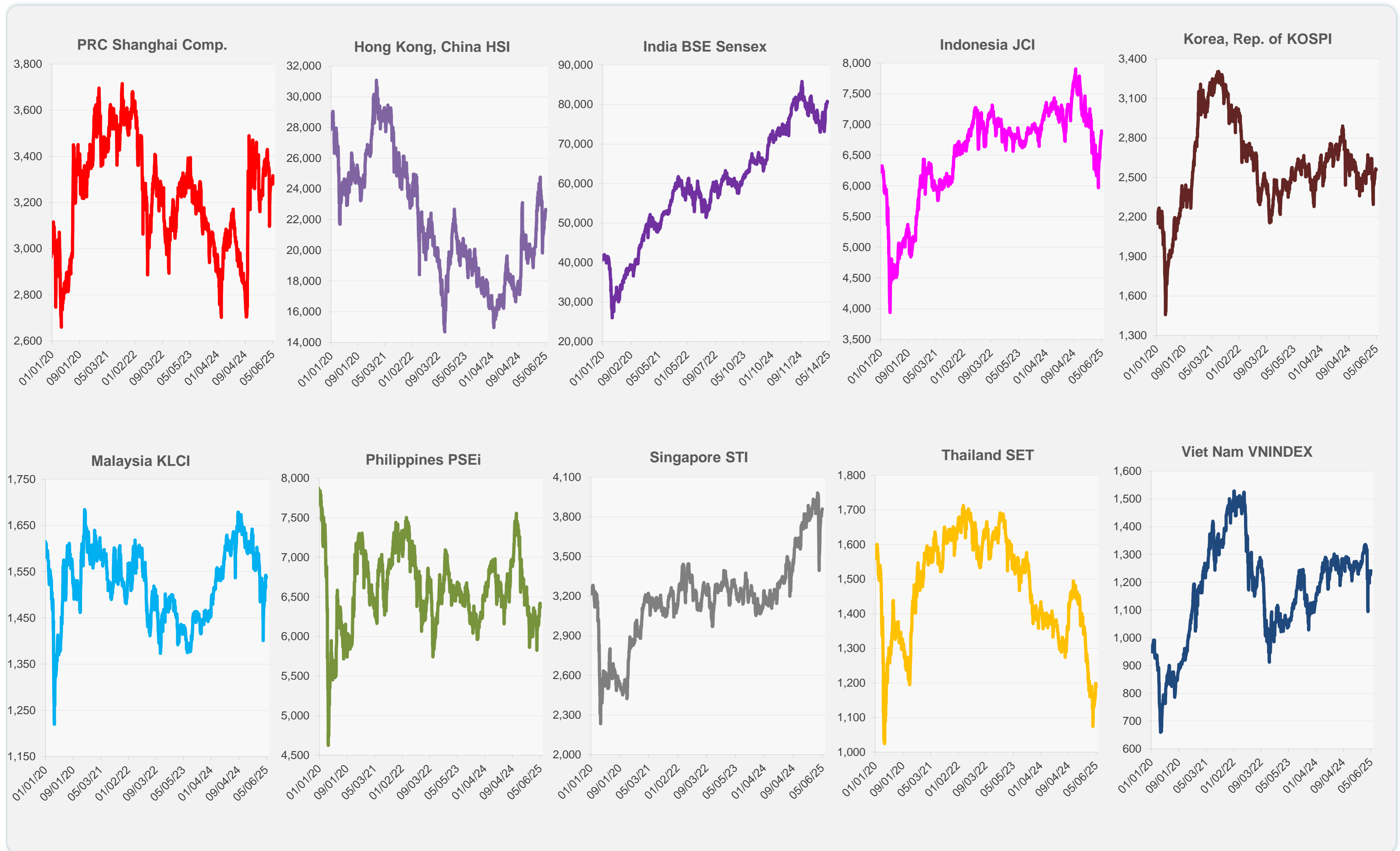
	Latest Closing	% change from Previous Day	% change from 01-Jan-25
US Dow Jones Ind Avg	40,829.00	-0.95	-4.03
US NASDAQ	17,689.66	-0.87	-8.39
US S&P 500	5,606.91	-0.77	-4.67
UK FTSE 100	8,597.42	0.01	5.19
EURO STOXX 50	5,263.38	-0.37	7.50
Japan NIKKEI 225	36,830.69	0.00	-7.68
Bangladesh DSEX	4,951.73	-0.26	-5.11
PRC Shanghai Comp.	3,316.11	1.13	-1.06
Hong Kong, China HSI	22,662.71	0.70	12.97
India BSE Sensex	80,641.07	-0.19	2.72
Indonesia JCI	6,898.20	0.97	-2.57
Korea, Rep. of KOSPI	2,559.79	0.00	6.68
Malaysia KLCI	1,536.80	-0.18	-6.43
Pakistan KSE 100	113,568.50	-0.47	-2.94
Philippines PSEi	6,418.69	0.93	-1.69
Singapore STI	3,860.41	0.19	1.92
Sri Lanka CSEALL	15,961.59	0.28	0.11
Taipei, China TWSE	20,522.59	-0.05	-10.91
Thailand SET	1,187.86	-0.93	-15.17
Viet Nam VNINDEX	1,241.95	0.15	-1.96



NIE = Newly Industrialized Economies



Sources: ADB calculations using data from CEIC Data Company and Haver Analytics.



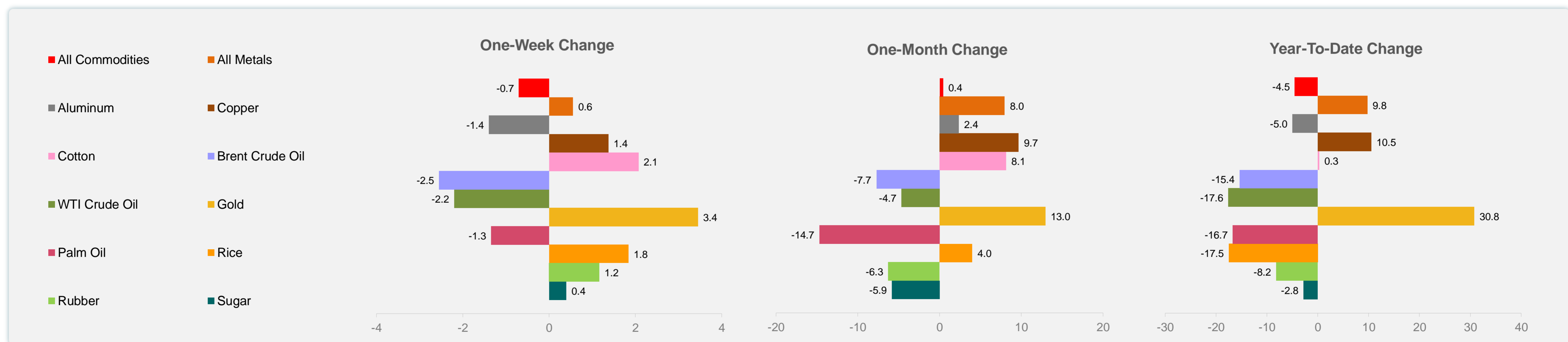
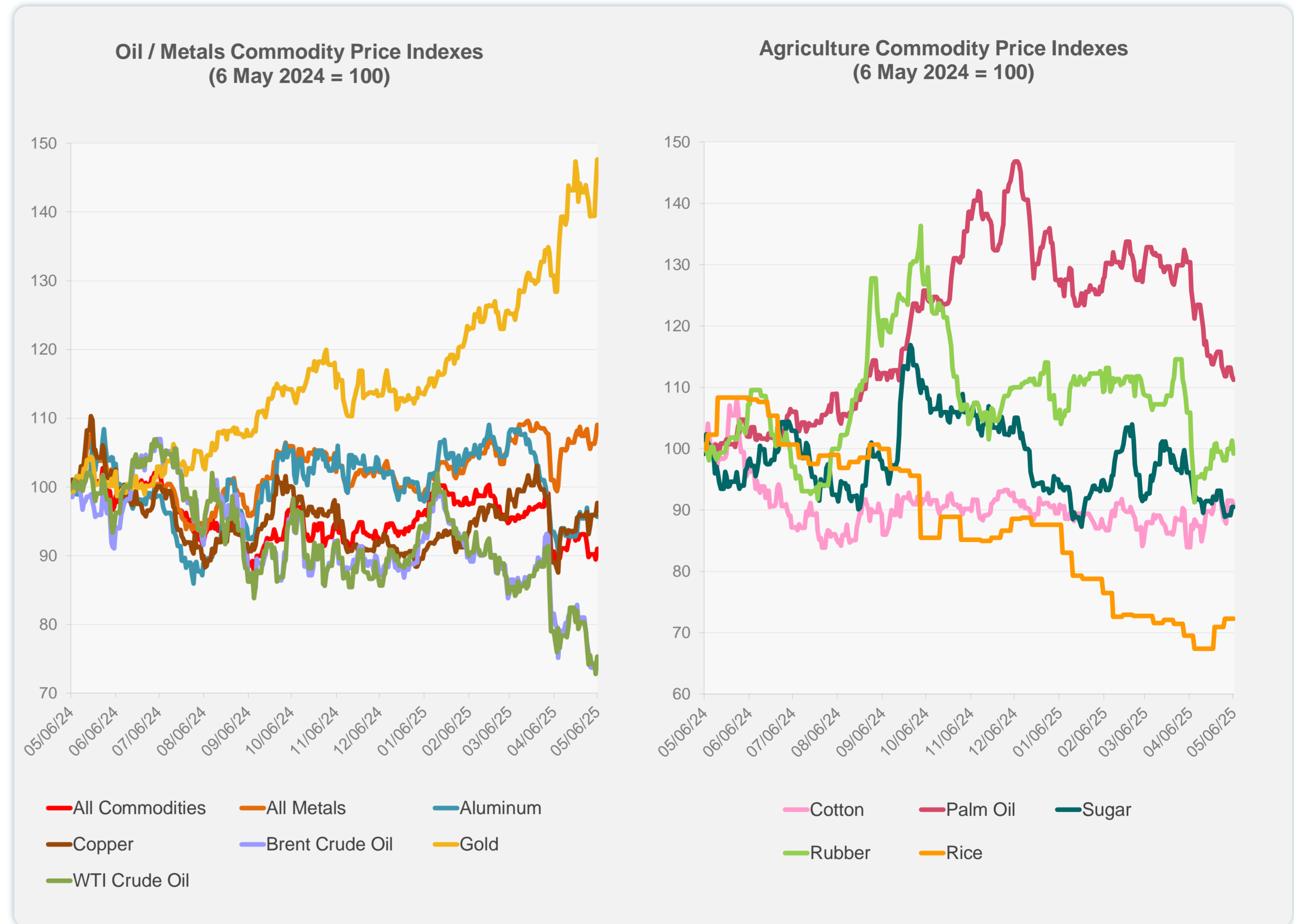
Sources: CEIC Data Company and Haver Analytics.

Daily Market Watch
COMMODITY PRICES

	Unit	Latest Closing	% change from Previous Day	% change from 01-Jan-25
S&P All Commodities	US\$	524.88	1.70	-4.50
S&P All Metals	US\$	337.37	1.70	9.76
Aluminum	US\$/metric ton	2,401.34	-0.31	-4.96
Copper	US\$/metric ton	9,559.75	1.85	10.48
Cotton	US cents/lb	66.08	-0.88	0.27
Brent Crude Oil	US\$/barrel	62.71	2.12	-15.38
WTI Crude Oil	US\$/barrel	59.09	3.43	-17.61
Gold	US\$/troy oz	3,431.77	2.93	30.76
Palm Oil	US\$/metric tonne	916.05	-0.55	-16.73
Rice ¹	US\$/metric ton	443.00	0.00	-17.50
Rubber ²	US\$/kg	217.40	-2.07	-8.19
Sugar	US cents/lb	17.69	0.00	-2.80

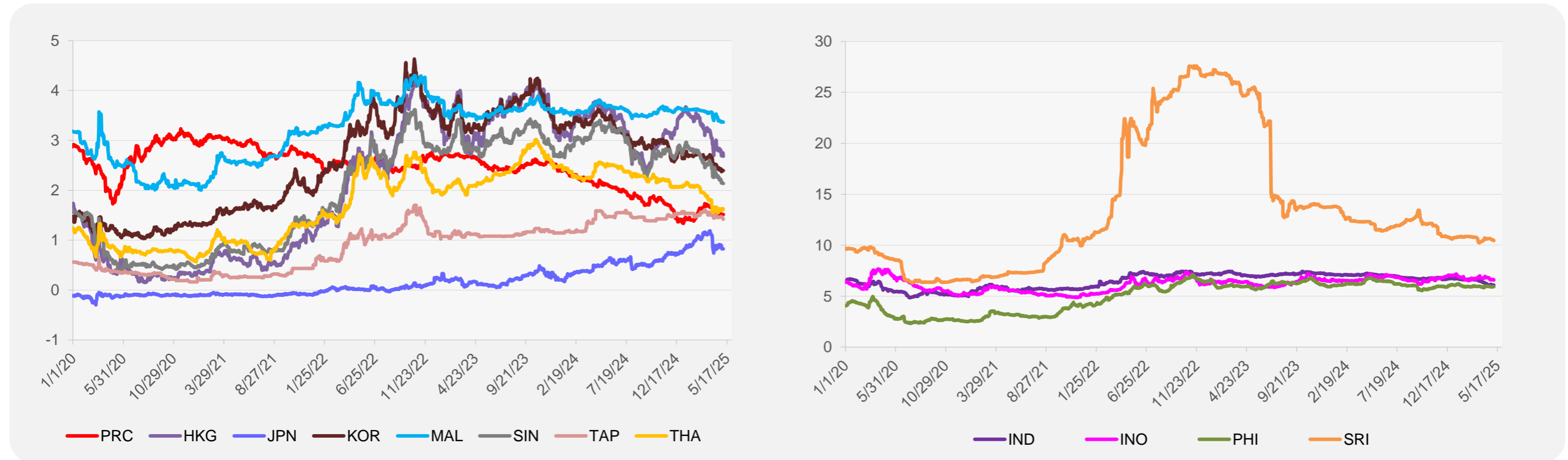
¹ Latest closing price from 30 April 2025.

² Singapore Exchange, Ribbed Smoked Sheet Rubber.

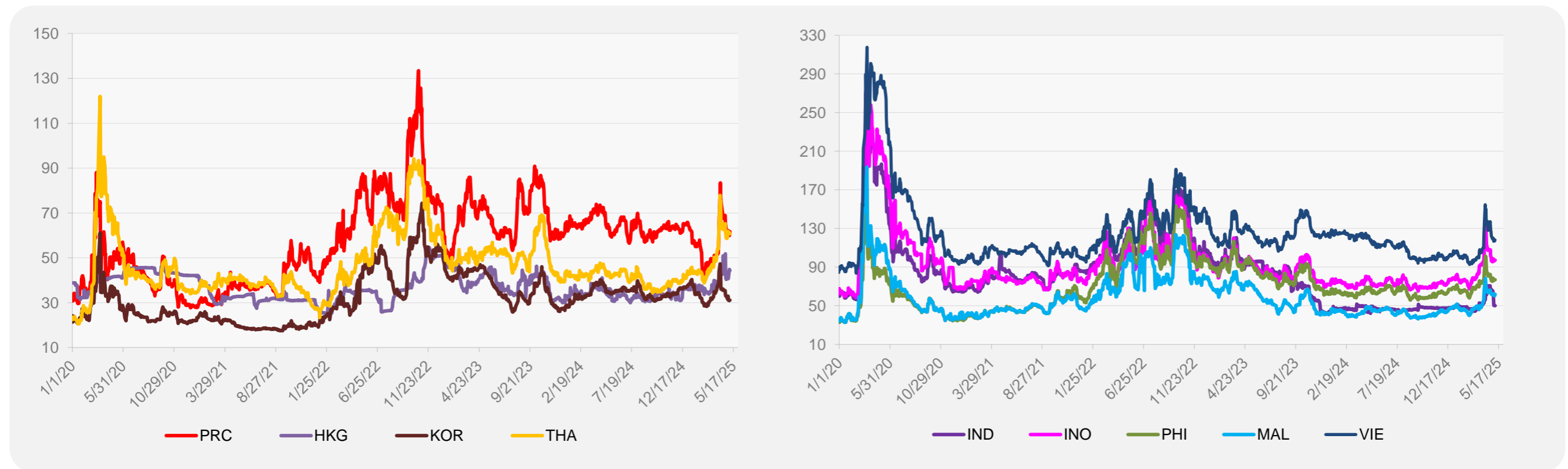


Source: ADB calculations using data from Bloomberg.

5-YEAR LOCAL CURRENCY GOVERNMENT BOND YIELDS (%)



5-YEAR CREDIT DEFAULT SWAP¹



¹ In USD and based on sovereign bonds.
Source: ADB calculations using data from Bloomberg.