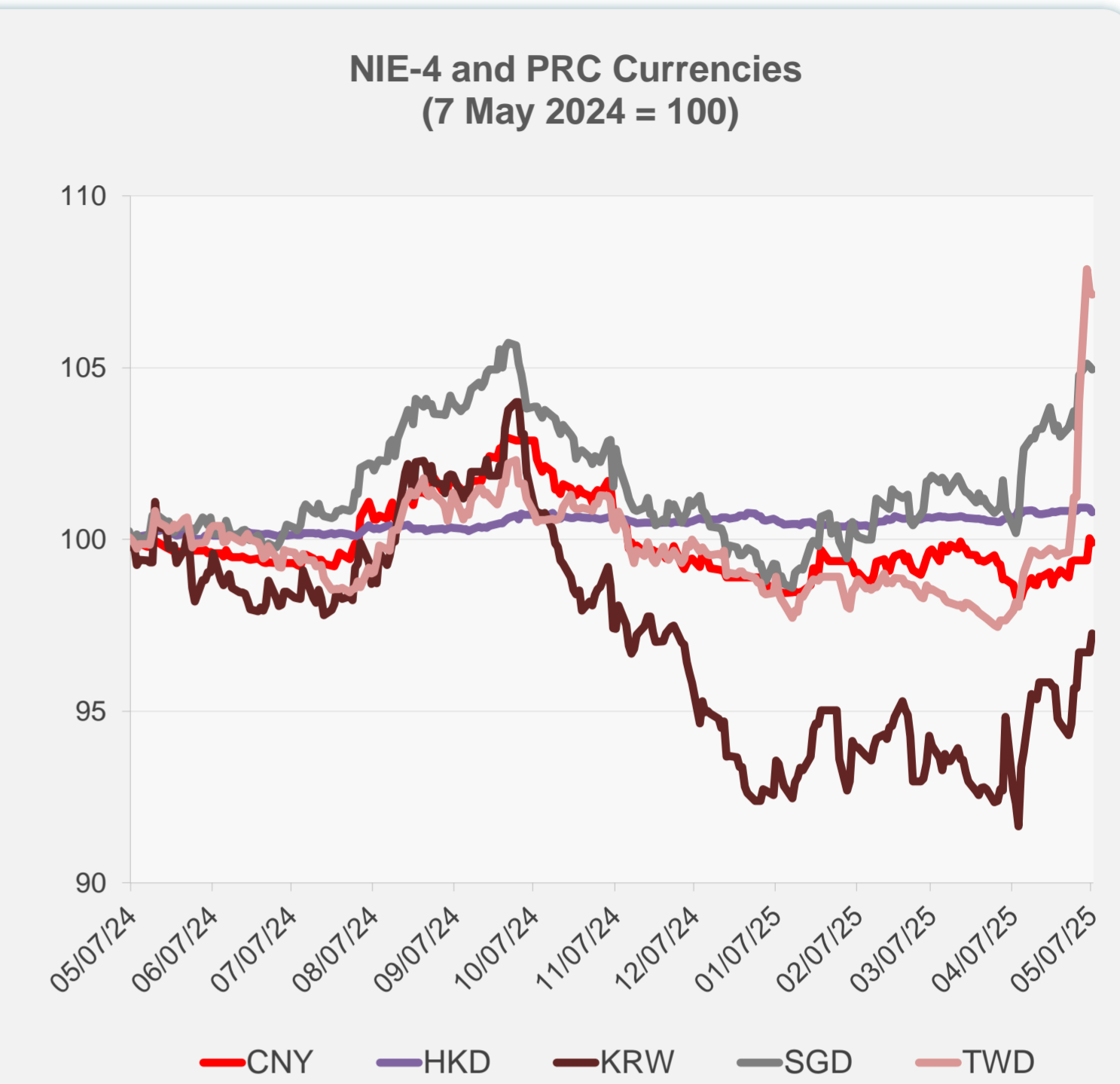
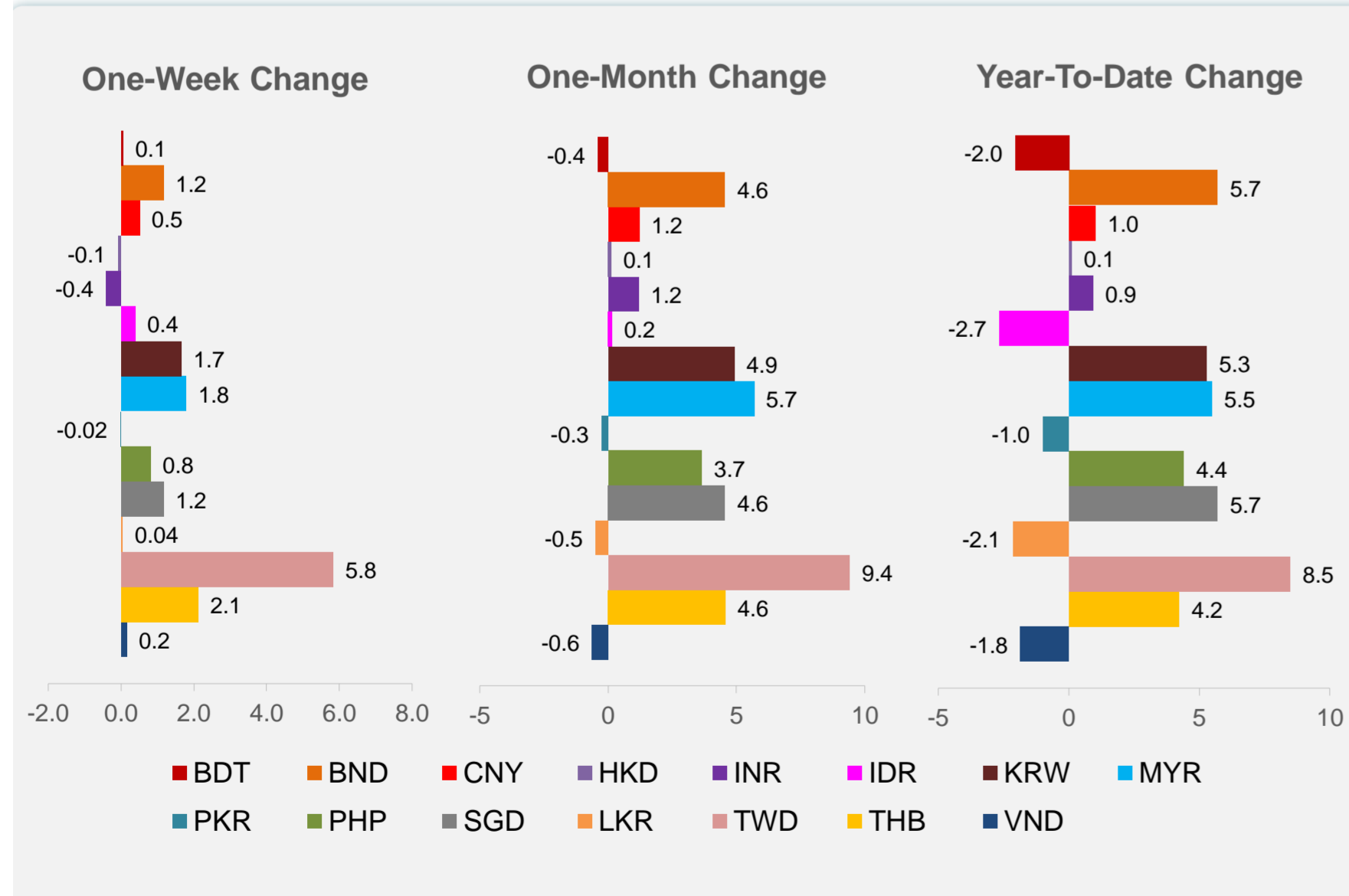
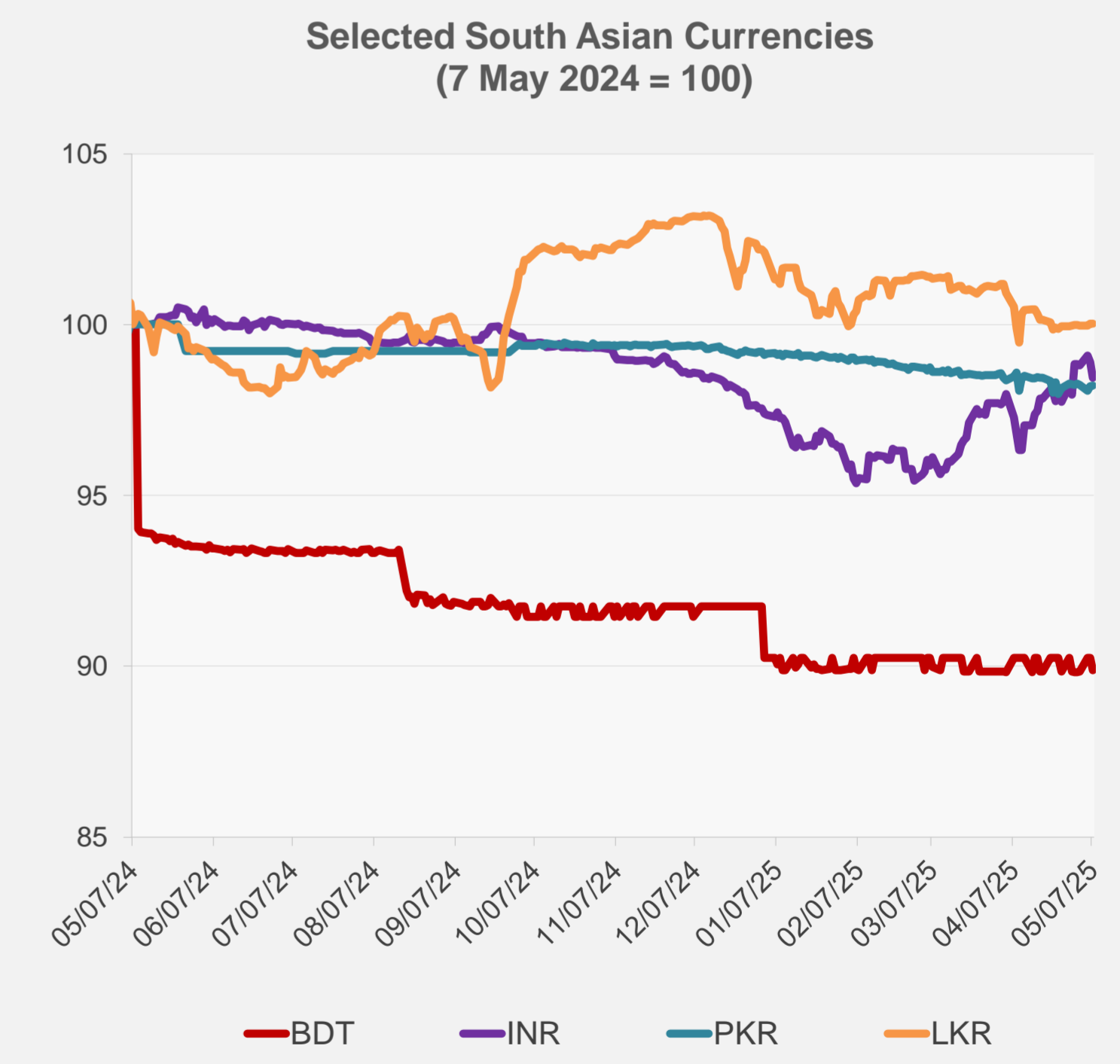
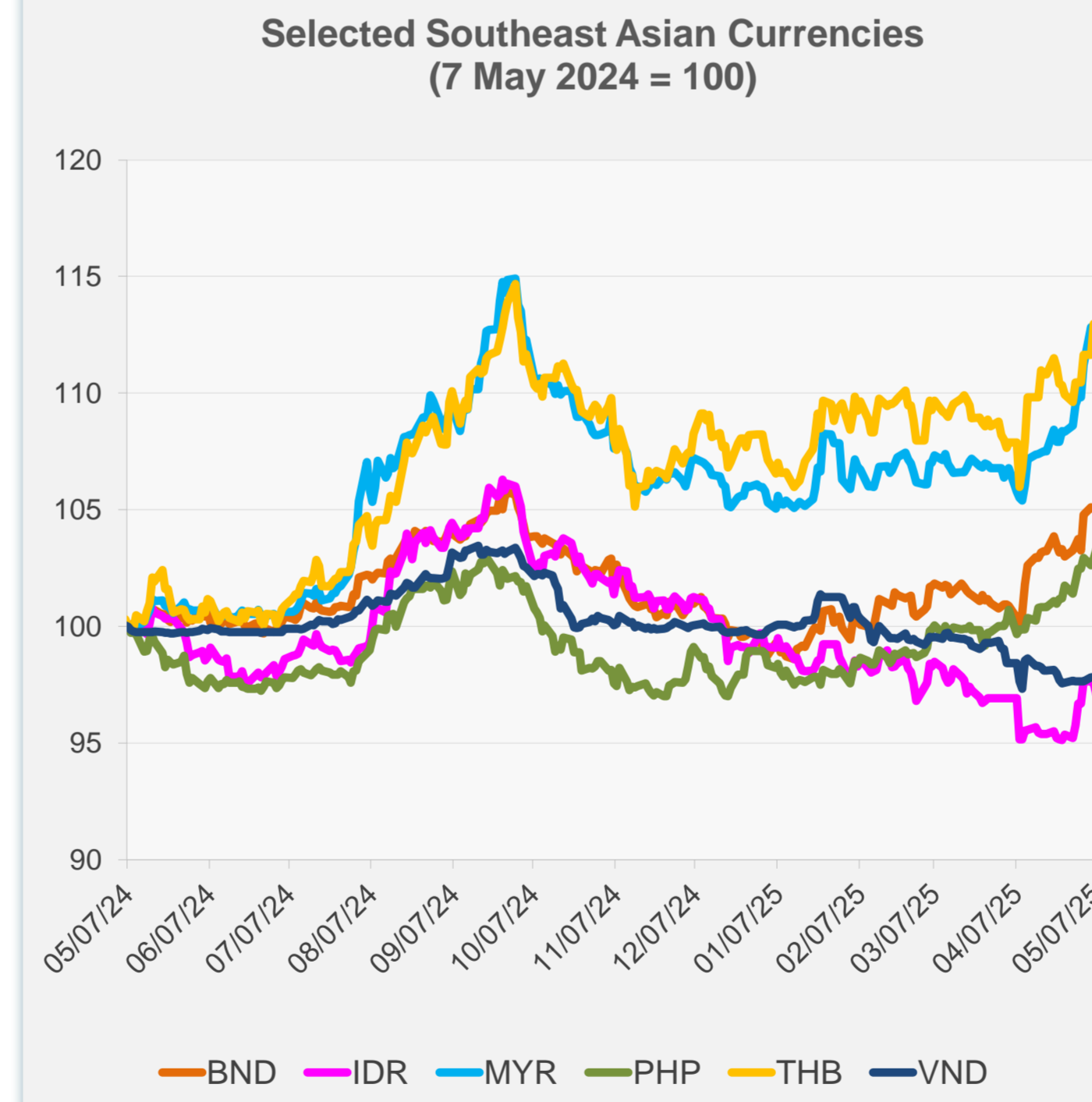


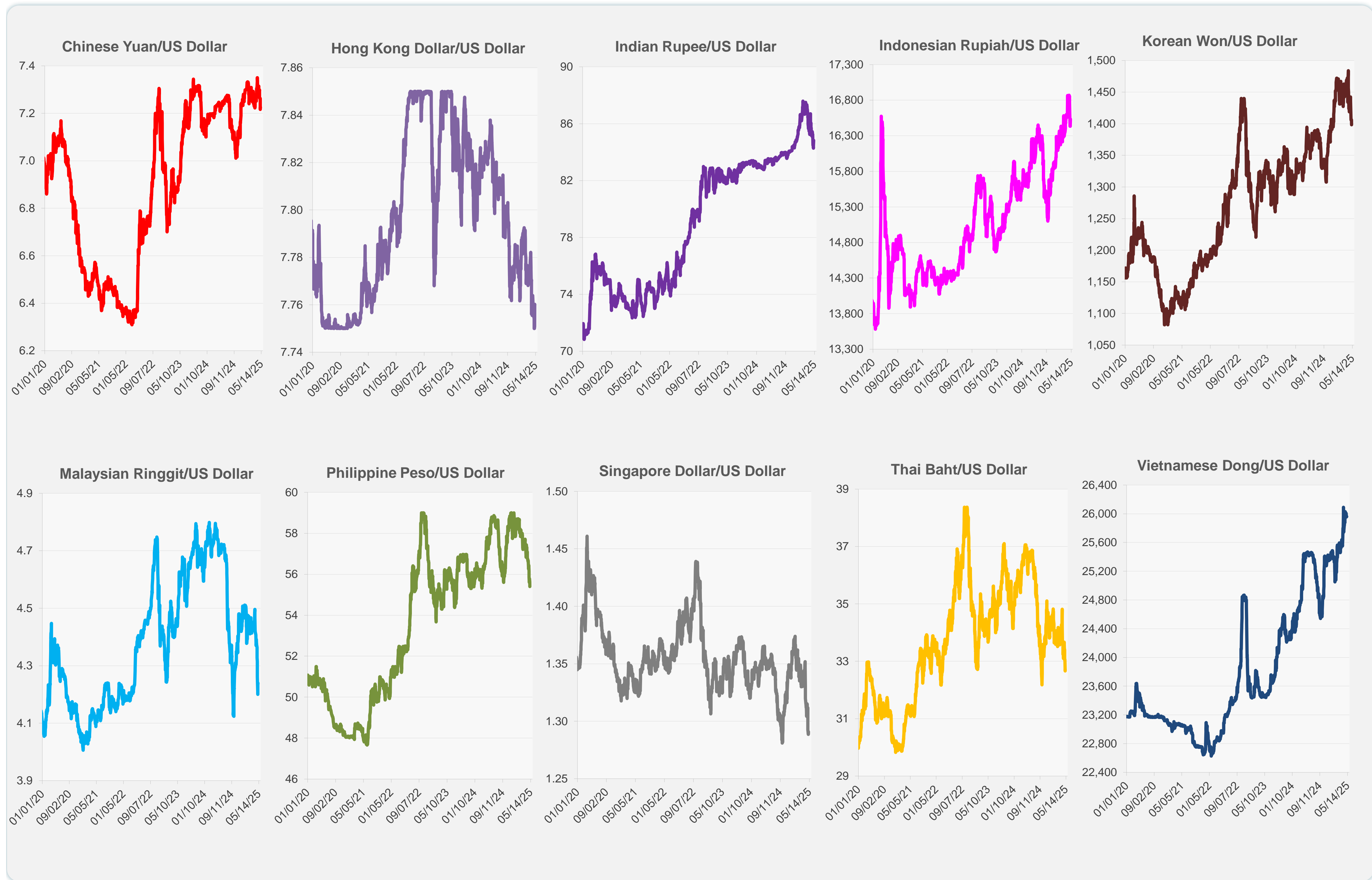
	Latest Closing	% change from Previous Day	% change from 01-Jan-25
Euro	0.88	0.22	9.78
Japanese yen (JPY)	143.29	-0.31	9.68
Bangladeshi taka (BDT)	122.00	-0.41	-2.05
Brunei dollar (BND)	1.29	-0.09	5.70
Chinese yuan (CNY)	7.23	-0.13	1.02
Hong Kong dollar (HKD)	7.76	-0.12	0.10
Indian rupee (INR)	84.83	-0.47	0.92
Indonesian rupiah (IDR)	16,535.00	-0.51	-2.66
Korean won (KRW)	1,398.25	0.56	5.29
Malaysian ringgit (MYR)	4.24	-0.15	5.48
Pakistan rupee (PKR)	281.18	0.02	-1.00
Philippine peso (PHP)	55.40	0.39	4.41
Singapore dollar (SGD)	1.29	-0.09	5.70
Sri Lanka rupee (LKR)	299.35	0.01	-2.12
Taipei,China NT dollar (TWD)	30.22	-0.08	8.49
Thai baht (THB)	32.71	-0.15	4.23
Vietnamese dong (VND)	25,962.50	-0.01	-1.84



NIE = Newly Industrialized Economies

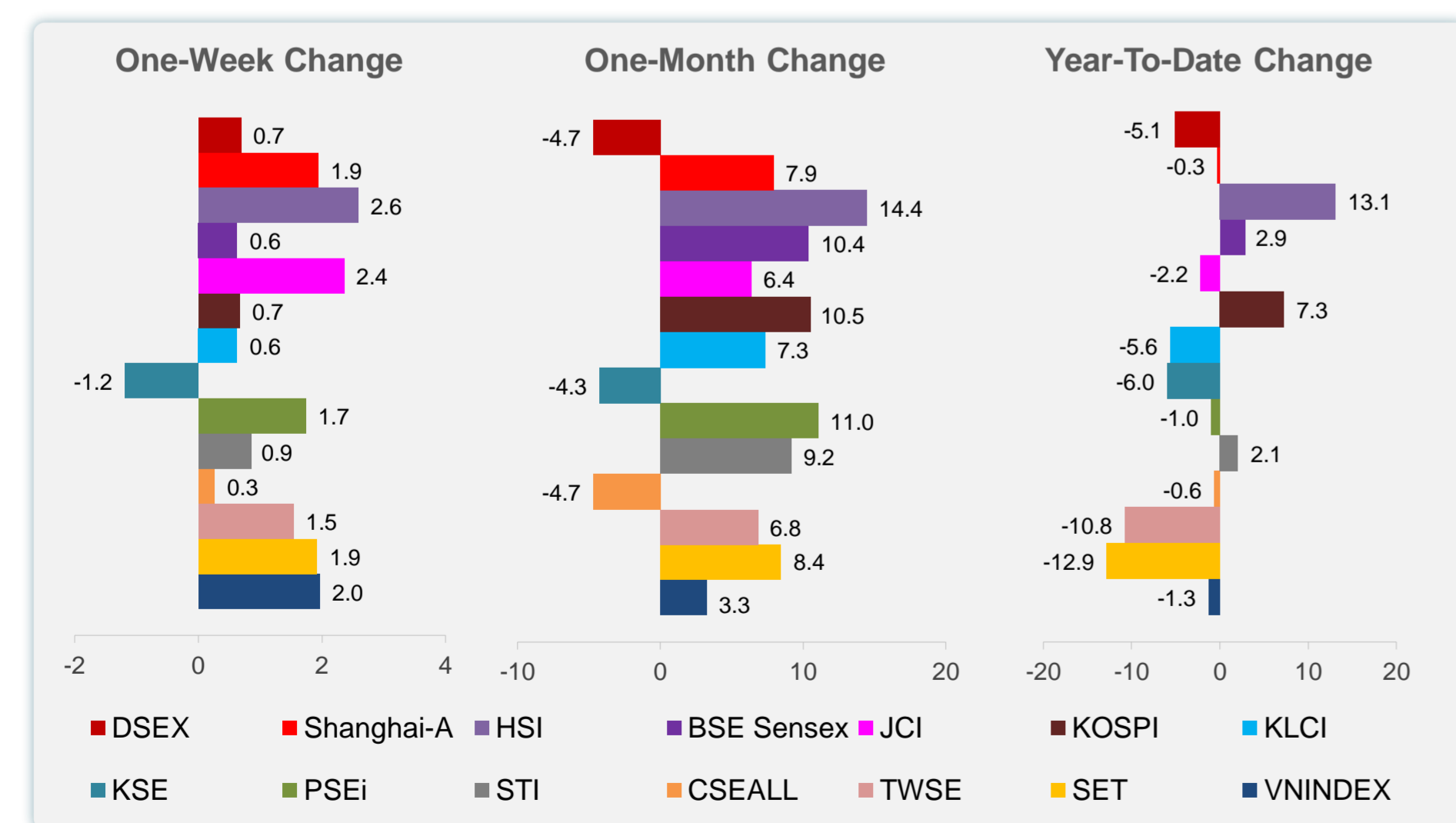
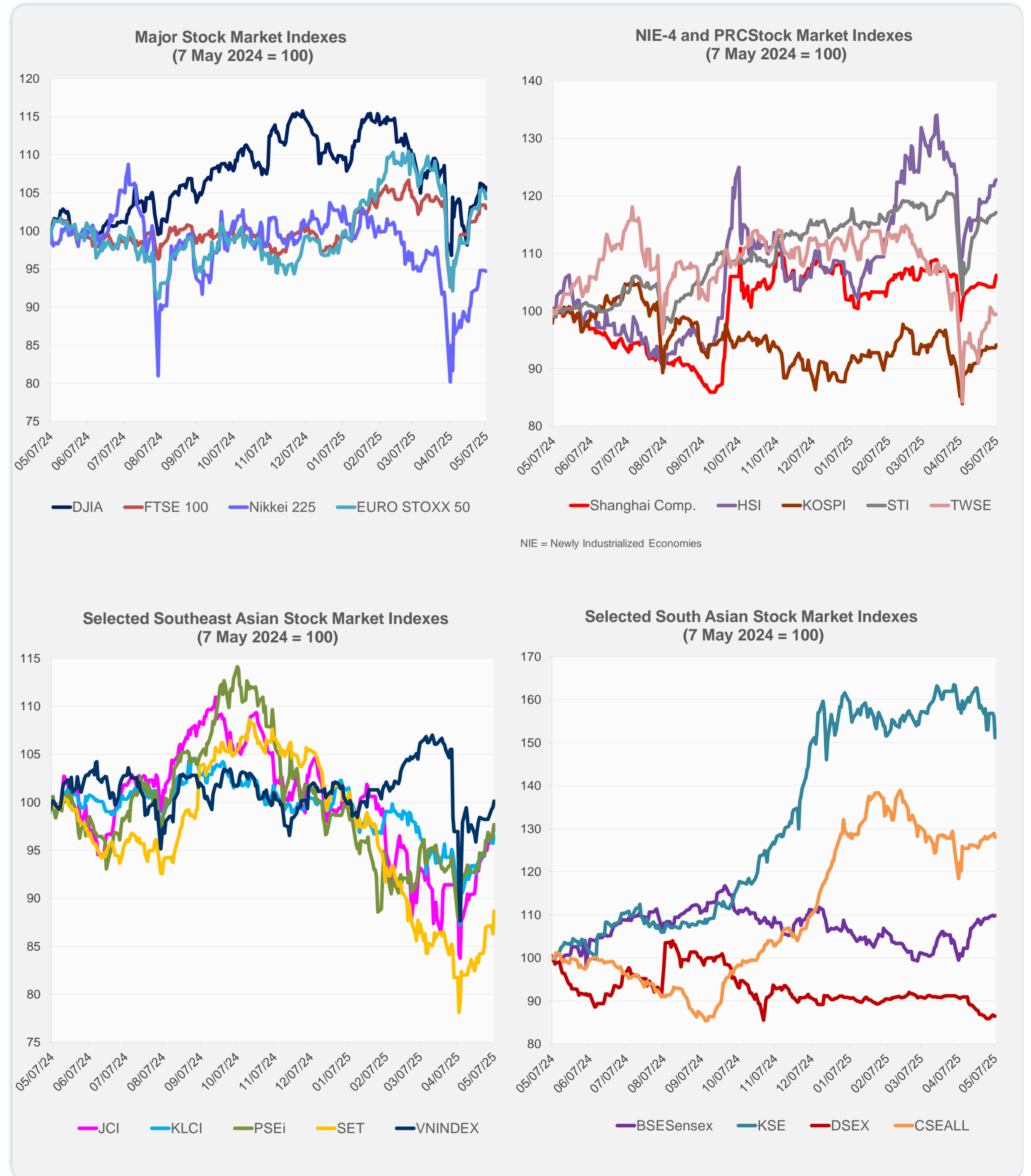


Note: Negative/Decreasing values indicate depreciation of local currency, and positive/increasing values indicate appreciation.
Source: ADB calculations using data from Haver Analytics.

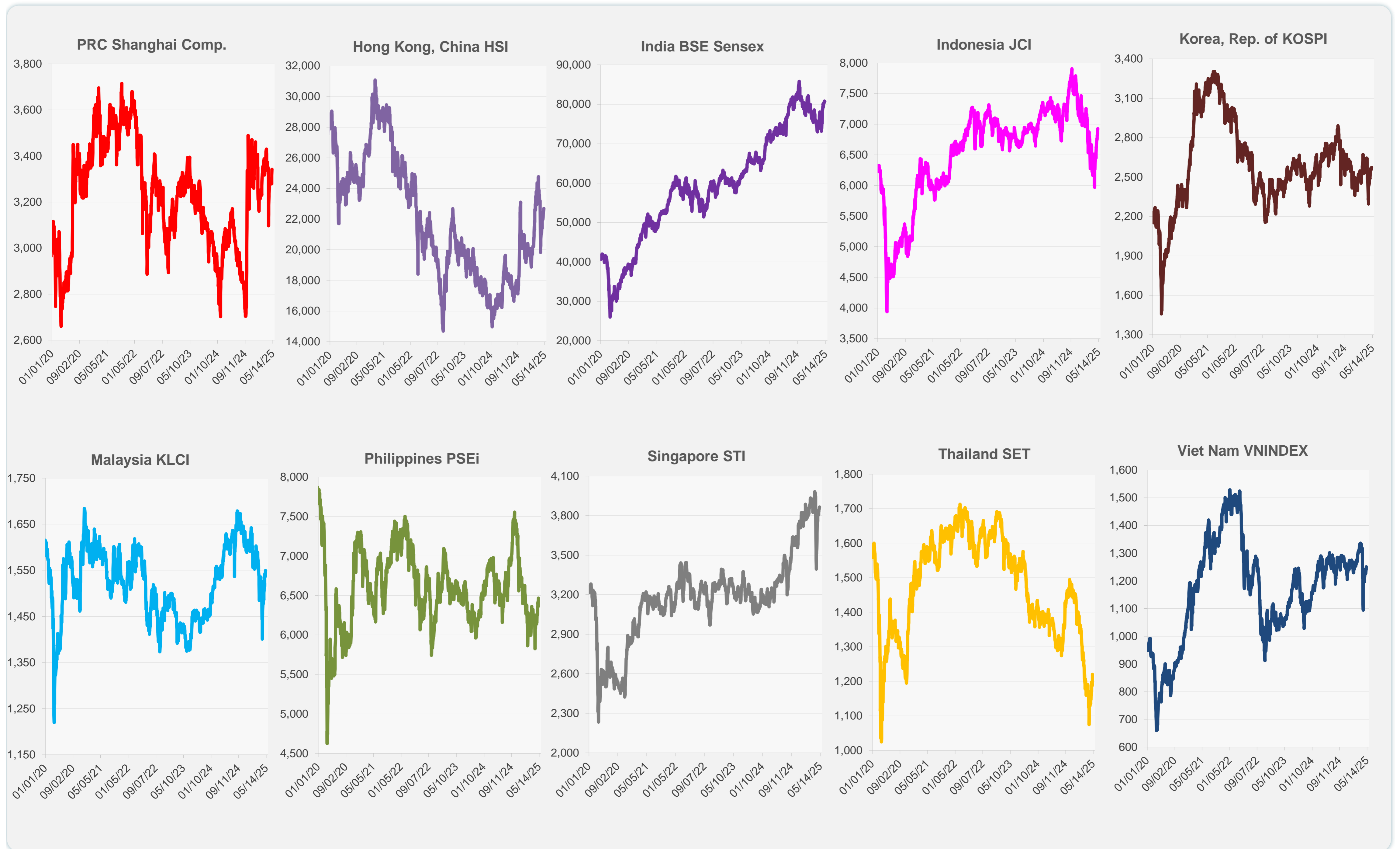


Source: Haver Analytics.

	Latest Closing	% change from Previous Day	% change from 01-Jan-25
US Dow Jones Ind Avg	41,113.97	0.70	-3.36
US NASDAQ	17,738.16	0.27	-8.14
US S&P 500	5,631.28	0.43	-4.26
UK FTSE 100	8,559.33	-0.44	4.73
EURO STOXX 50	5,230.19	-0.63	6.83
Japan NIKKEI 225	36,779.66	-0.14	-7.81
Bangladesh DSEX	4,951.73	0.00	-5.11
PRC Shanghai Comp.	3,342.67	0.80	-0.27
Hong Kong, China HSI	22,691.88	0.13	13.12
India BSE Sensex	80,746.78	0.13	2.85
Indonesia JCI	6,926.23	0.41	-2.17
Korea, Rep. of KOSPI	2,573.80	0.55	7.26
Malaysia KLCI	1,549.90	0.85	-5.63
Pakistan KSE 100	110,009.02	-3.13	-5.98
Philippines PSEi	6,465.45	0.73	-0.97
Singapore STI	3,865.37	0.13	2.05
Sri Lanka CSEALL	15,841.60	-0.75	-0.65
Taipei, China TWSE	20,546.49	0.12	-10.80
Thailand SET	1,220.27	2.73	-12.85
Viet Nam VNINDEX	1,250.37	0.68	-1.30



Sources: ADB calculations using data from CEIC Data Company and Haver Analytics.



Sources: CEIC Data Company and Haver Analytics.

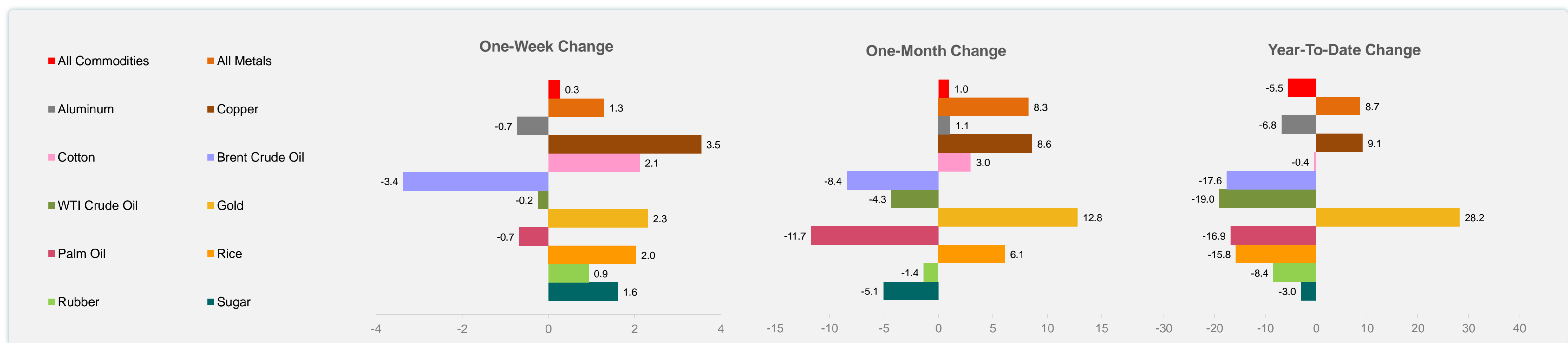
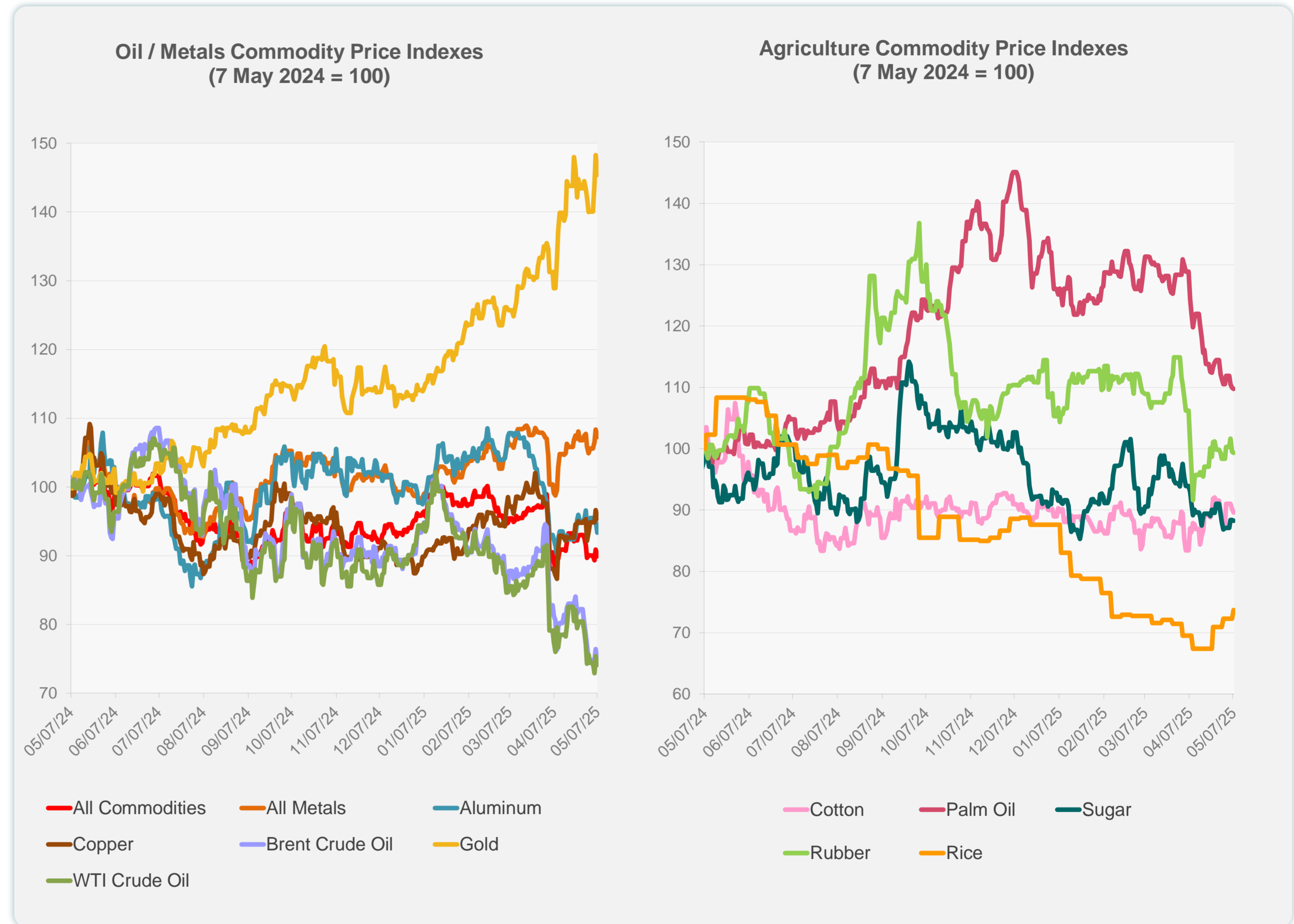
Daily Market Watch
COMMODITY PRICES

8 May 2025, 9:00 AM Manila

	Unit	Latest Closing	% change from Previous Day	% change from 01-Jan-25
S&P All Commodities	US\$	519.52	-1.02	-5.48
S&P All Metals	US\$	334.05	-0.98	8.68
Aluminum	US\$/metric ton	2,354.49	-1.95	-6.82
Copper	US\$/metric ton	9,441.15	-1.24	9.11
Cotton	US cents/lb	65.63	-0.68	-0.41
Brent Crude Oil	US\$/barrel	61.07	-2.61	-17.59
WTI Crude Oil	US\$/barrel	58.07	-1.73	-19.03
Gold	US\$/troy oz	3,364.50	-1.96	28.20
Palm Oil	US\$/metric tonne	914.69	-0.17	-16.86
Rice ¹	US\$/metric ton	452.00	2.03	-15.83
Rubber ²	US\$/kg	216.90	-0.23	-8.40
Sugar	US cents/lb	17.66	-0.17	-2.97

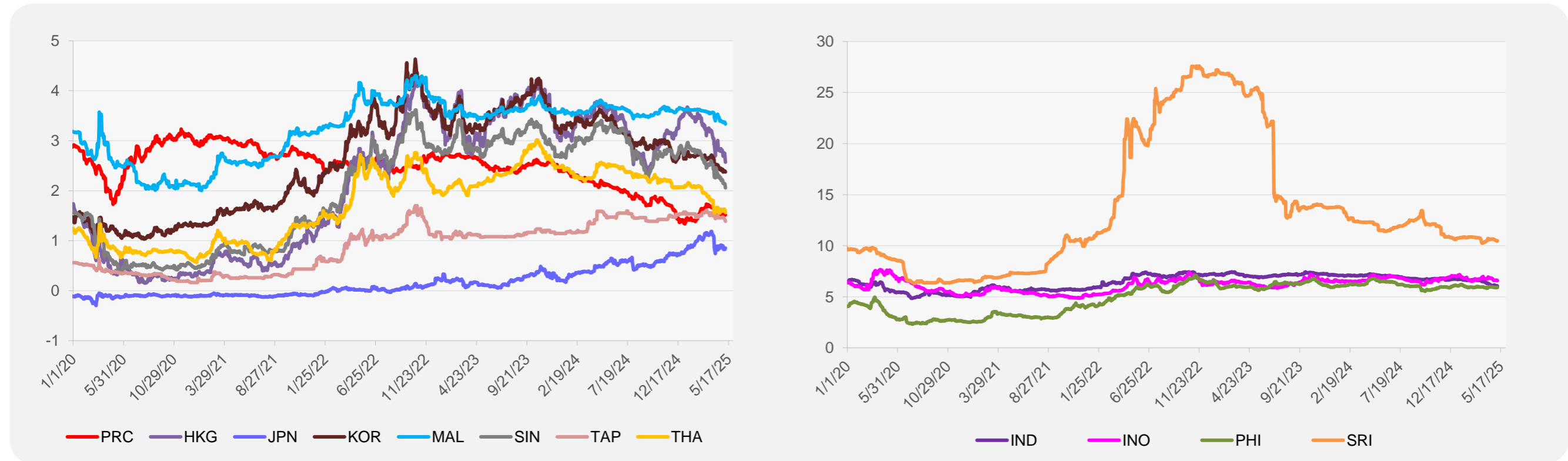
¹ Latest closing price from 7 May 2025.

² Singapore Exchange, Ribbed Smoked Sheet Rubber.

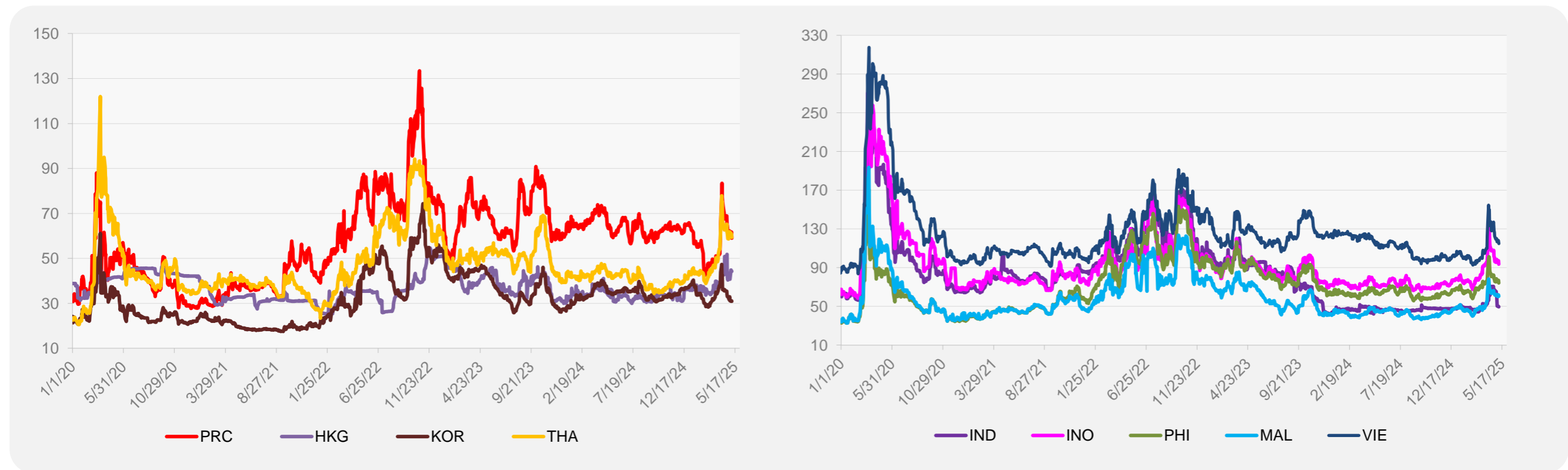


Source: ADB calculations using data from Bloomberg.

5-YEAR LOCAL CURRENCY GOVERNMENT BOND YIELDS (%)



5-YEAR CREDIT DEFAULT SWAP¹



¹ In USD and based on sovereign bonds.
Source: ADB calculations using data from Bloomberg.