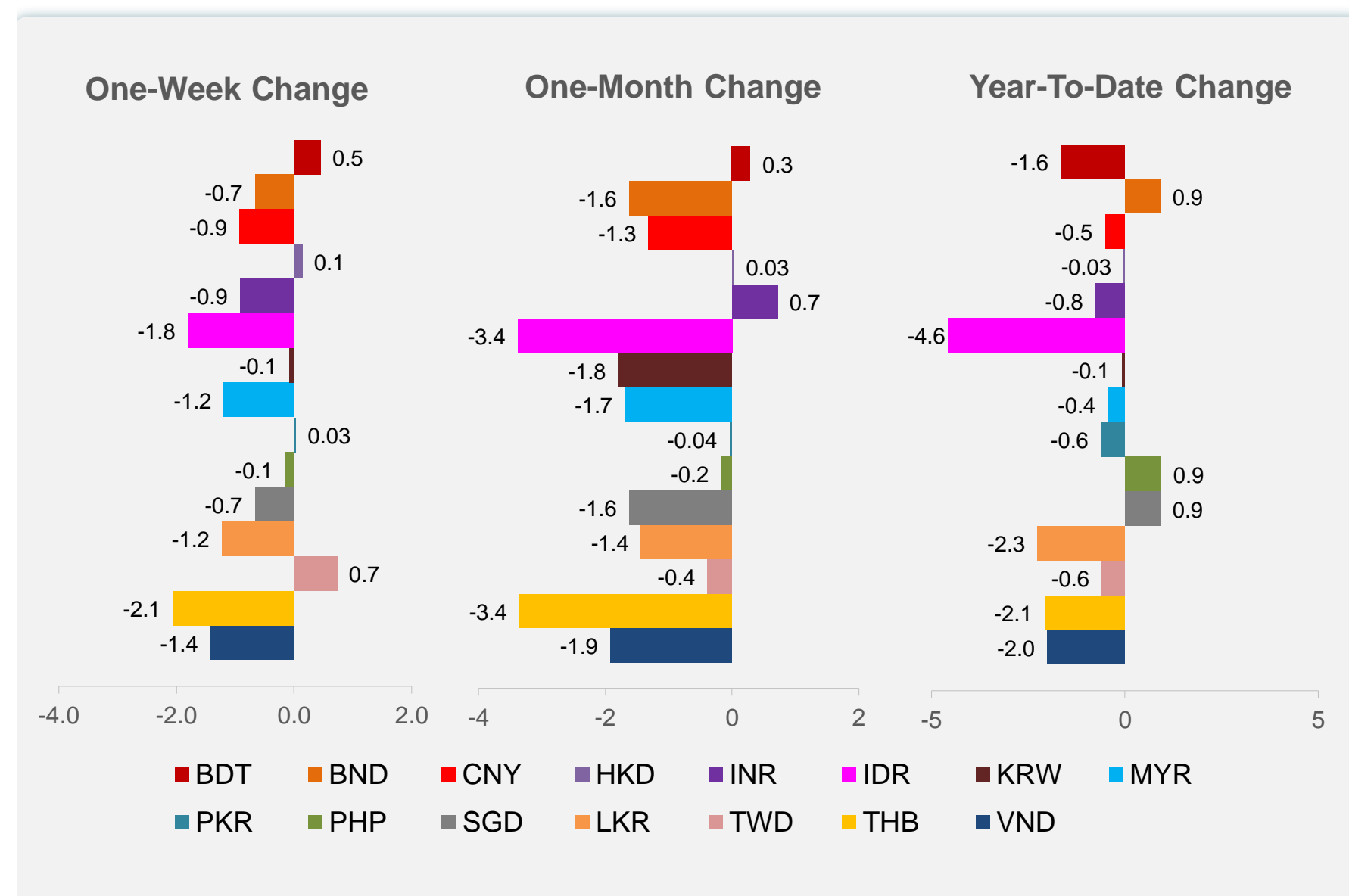
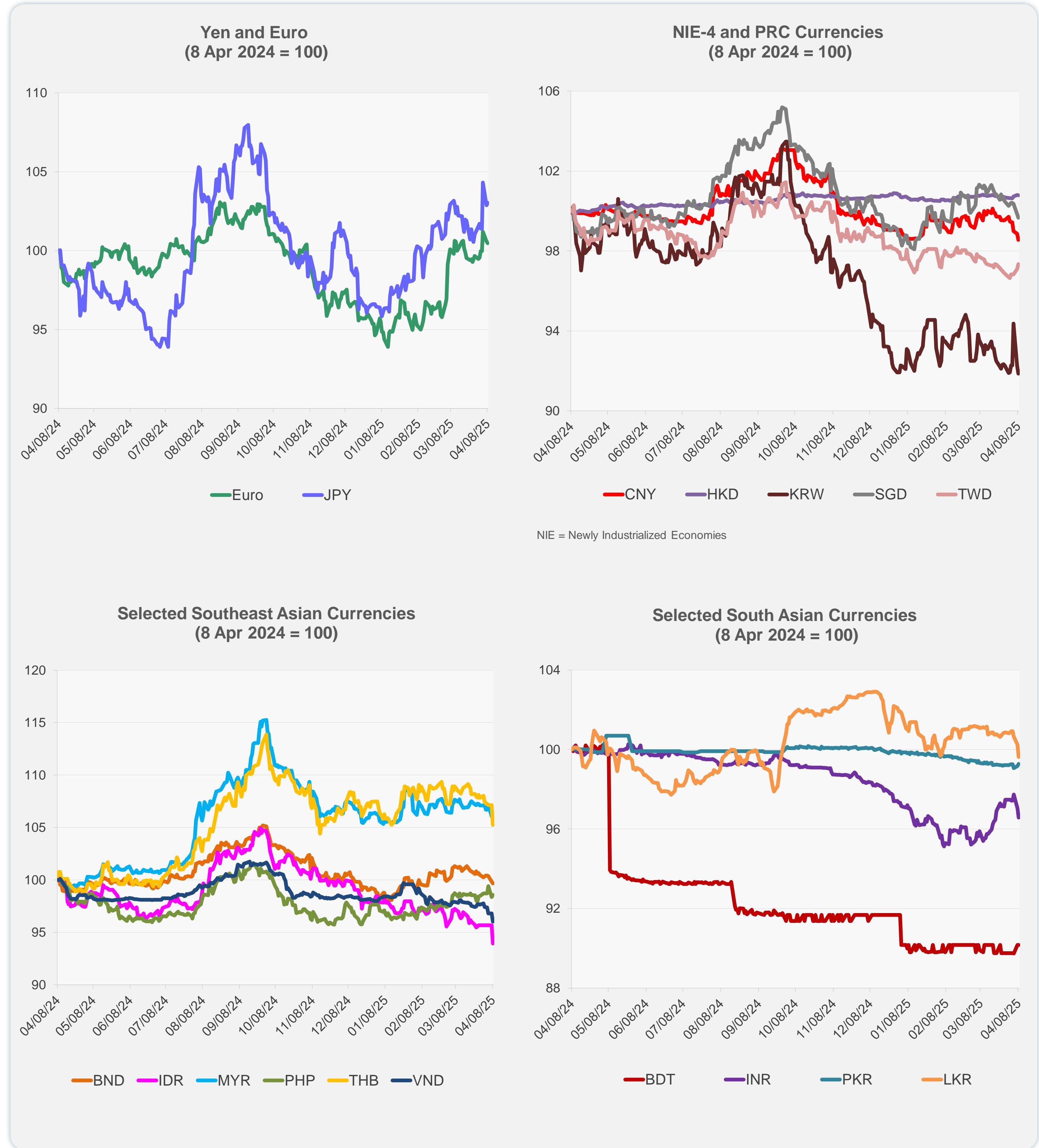
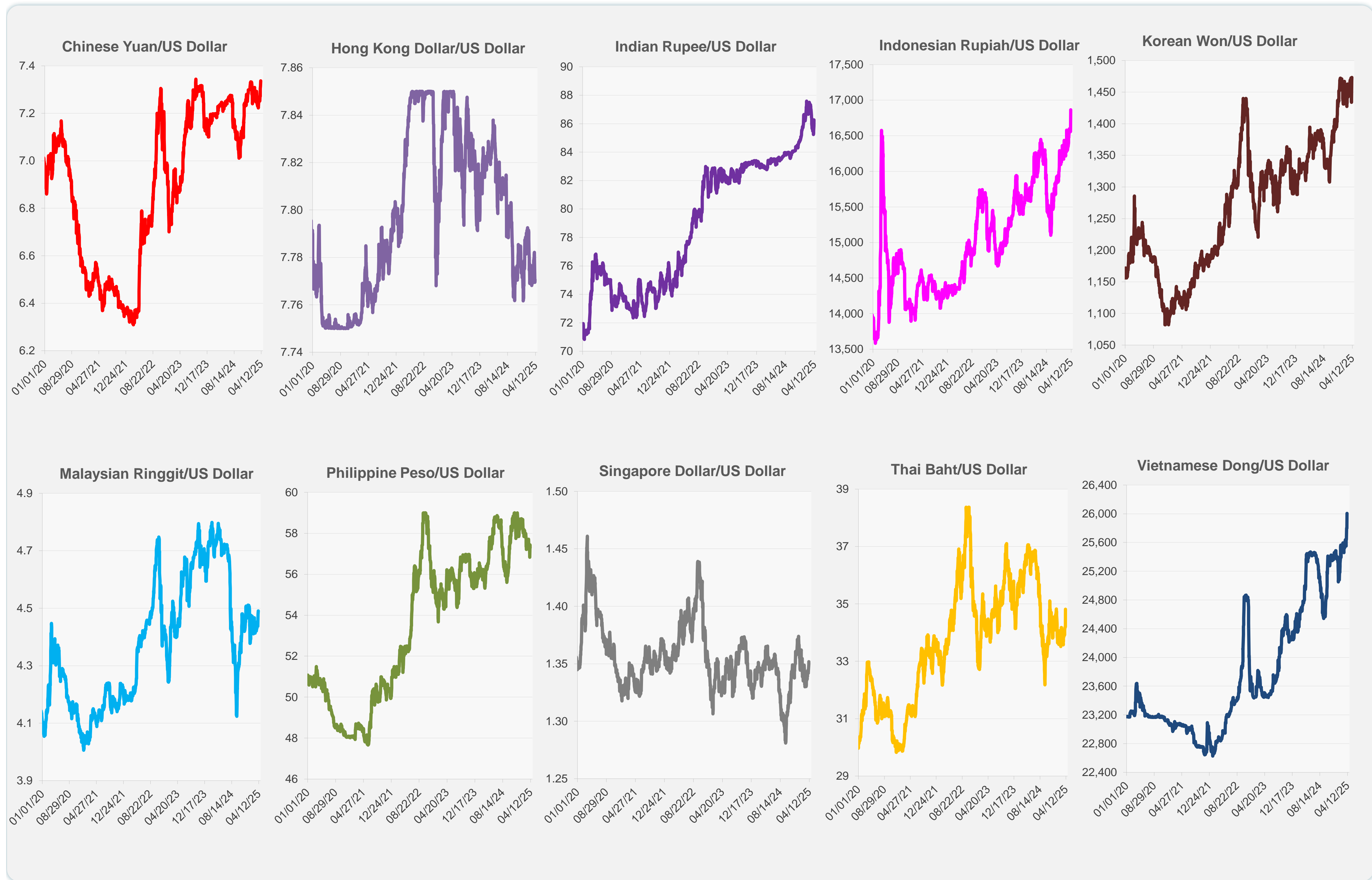


	Latest Closing	% change from Previous Day	% change from 01-Jan-25
Euro	0.92	-0.11	5.37
Japanese yen (JPY)	147.35	0.15	6.66
Bangladeshi taka (BDT)	121.50	0.00	-1.65
Brunei dollar (BND)	1.35	-0.18	0.91
Chinese yuan (CNY)	7.34	-0.31	-0.51
Hong Kong dollar (HKD)	7.77	-0.01	-0.03
Indian rupee (INR)	86.27	-0.49	-0.76
Indonesian rupiah (IDR)	16,865.00	-1.81	-4.57
Korean won (KRW)	1,473.20	-0.42	-0.07
Malaysian ringgit (MYR)	4.49	-0.24	-0.43
Pakistan rupee (PKR)	280.10	0.12	-0.62
Philippine peso (PHP)	57.31	0.21	0.93
Singapore dollar (SGD)	1.35	-0.18	0.91
Sri Lanka rupee (LKR)	299.75	-0.63	-2.25
Taipei,China NT dollar (TWD)	32.98	0.25	-0.59
Thai baht (THB)	34.82	-1.75	-2.07
Vietnamese dong (VND)	26,005.00	-0.79	-2.00



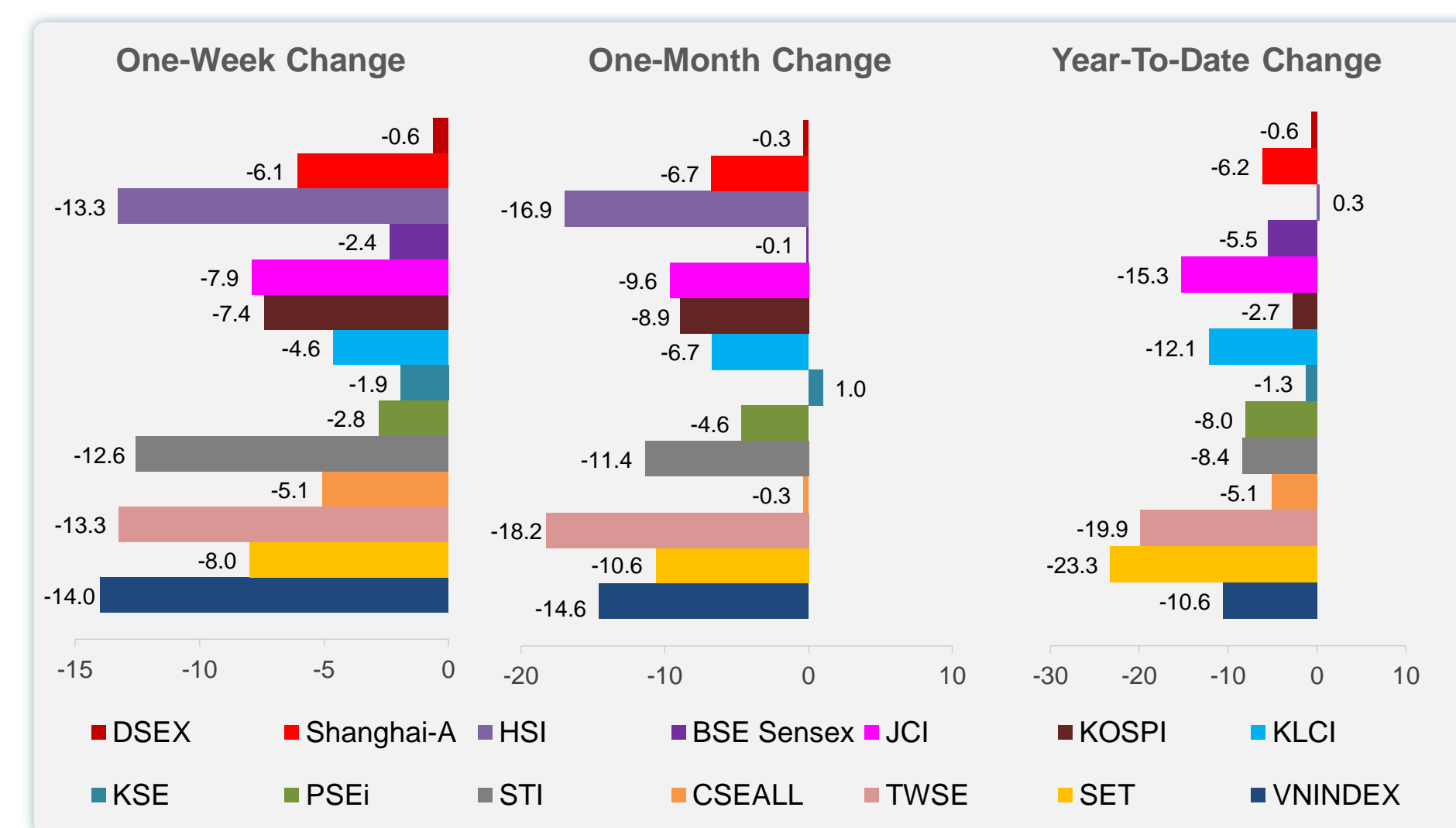
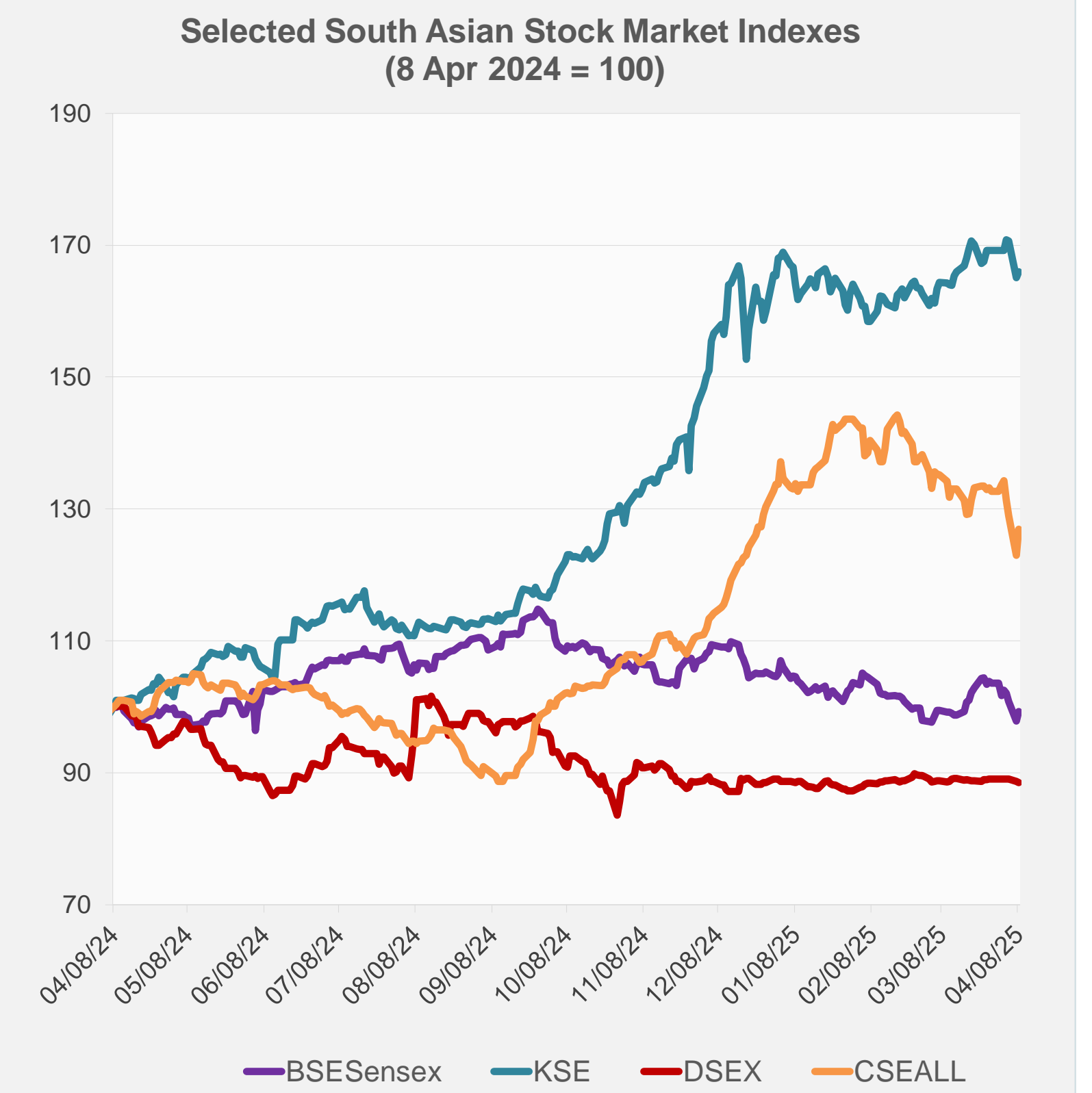
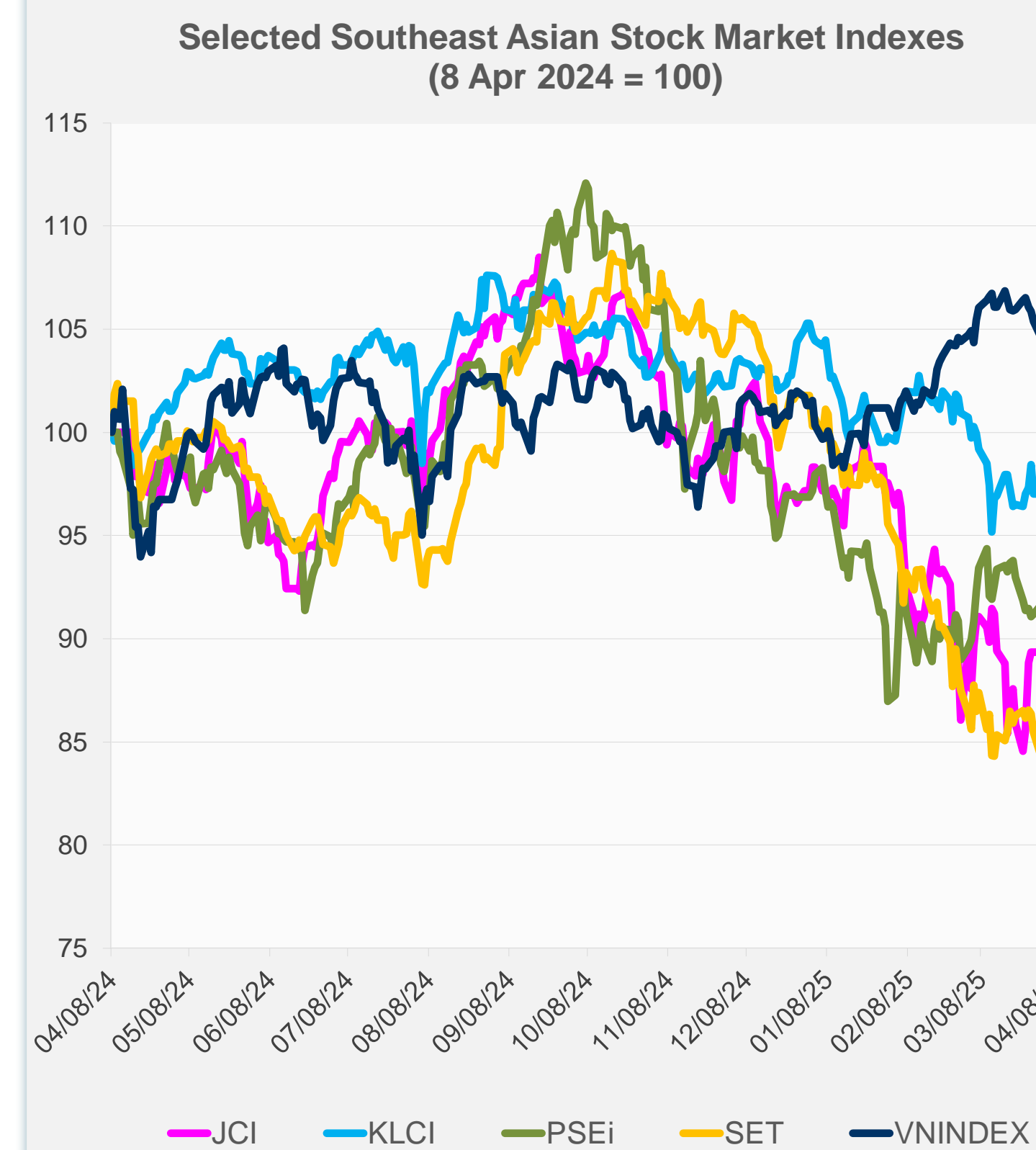
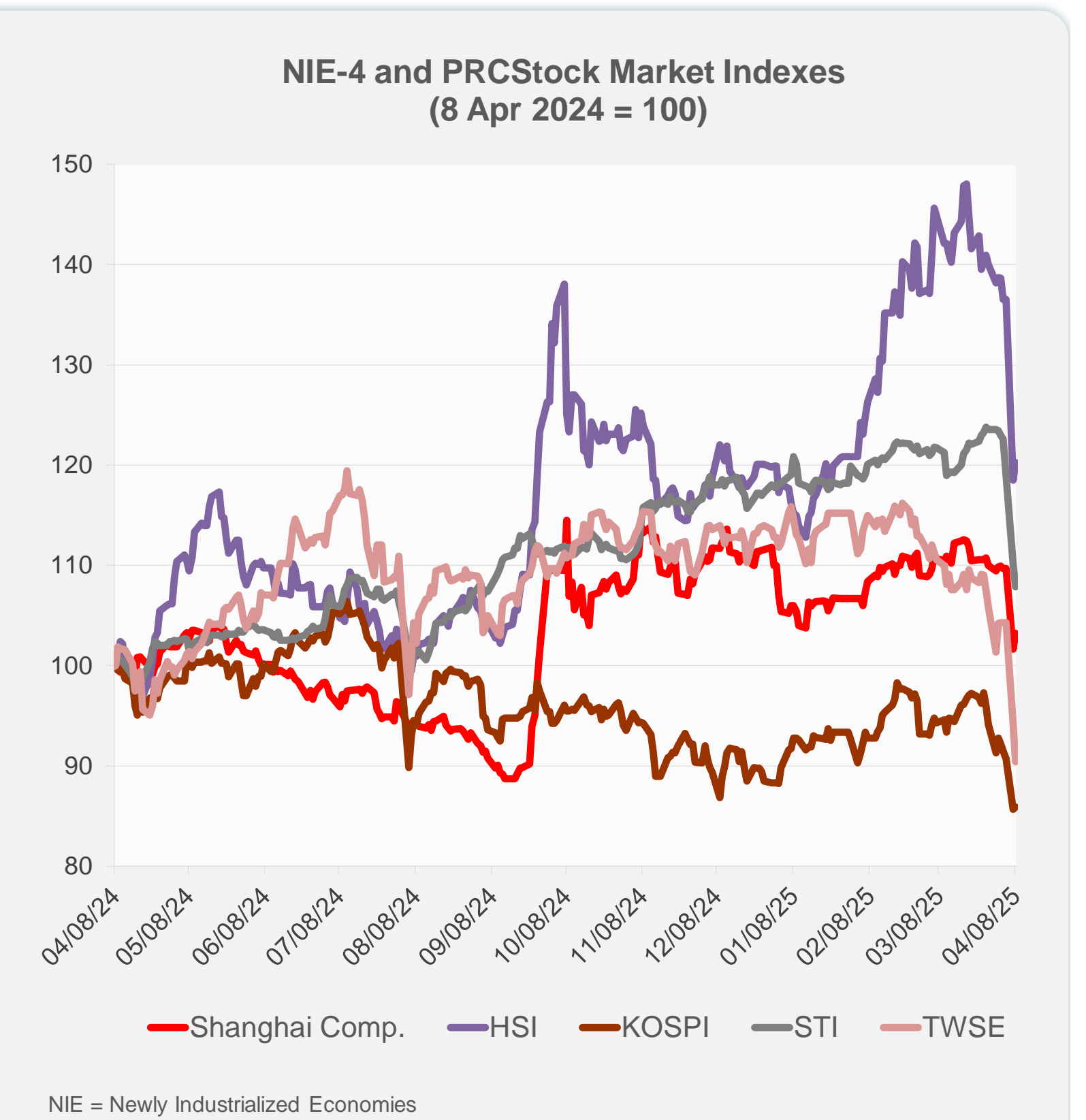
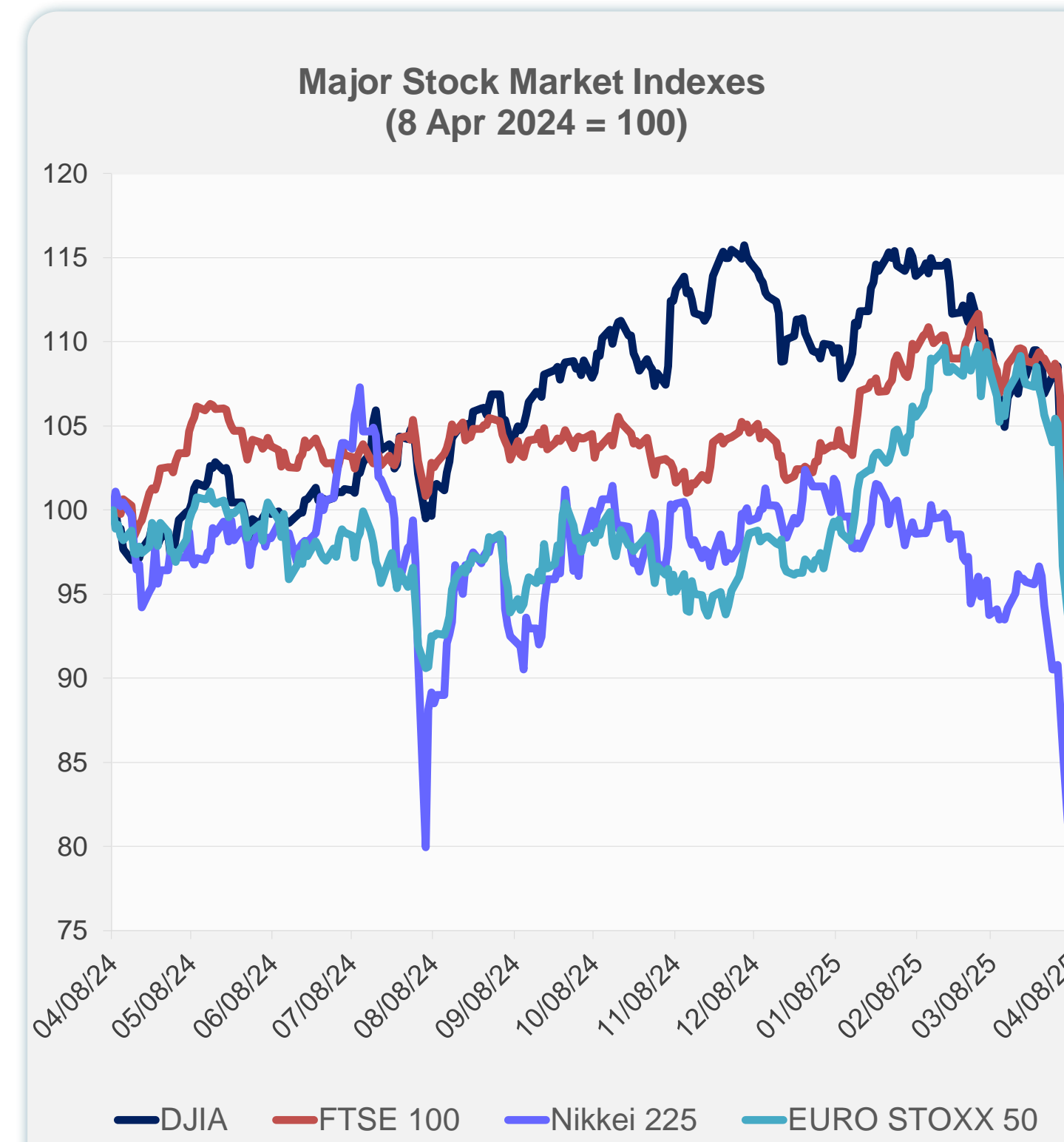
Note: Negative/Decreasing values indicate depreciation of local currency, and positive/increasing values indicate appreciation.
Source: ADB calculations using data from Haver Analytics.



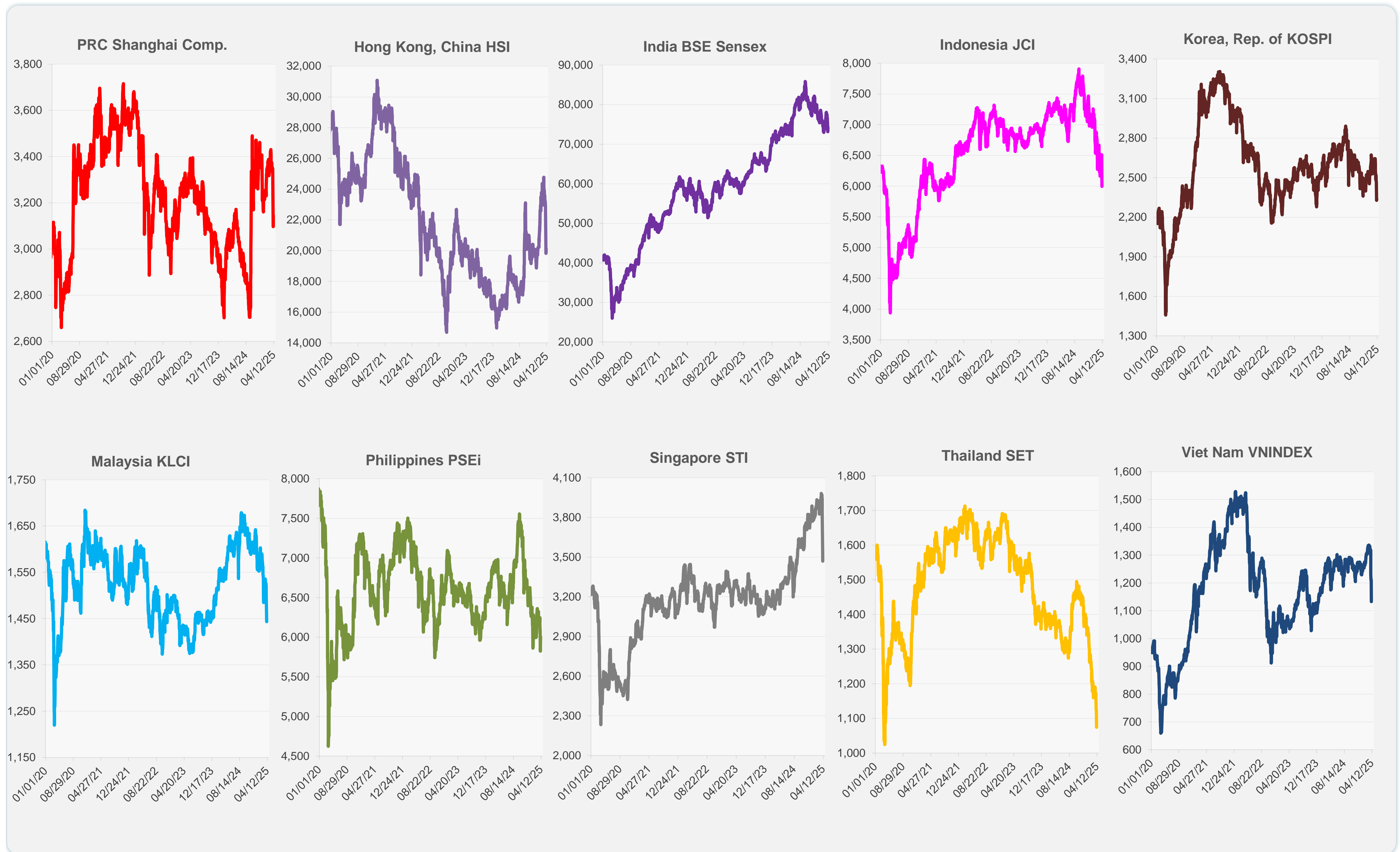
Source: Haver Analytics.

Daily Market Watch
STOCK INDEXES

	Latest Closing	% change from Previous Day	% change from 01-Jan-25
US Dow Jones Ind Avg	37,645.59	-0.84	-11.51
US NASDAQ	15,267.91	-2.15	-20.94
US S&P 500	4,982.77	-1.57	-15.28
UK FTSE 100	7,910.53	2.71	-3.21
EURO STOXX 50	4,773.65	2.52	-2.50
Japan NIKKEI 225	33,012.58	6.03	-17.25
Bangladesh DSEX	5,185.83	-0.21	-0.62
PRC Shanghai Comp.	3,145.55	1.58	-6.15
Hong Kong, China HSI	20,127.68	1.51	0.34
India BSE Sensex	74,227.08	1.49	-5.45
Indonesia JCI	5,996.14	-7.90	-15.31
Korea, Rep. of KOSPI	2,334.23	0.26	-2.72
Malaysia KLCI	1,443.56	-0.02	-12.10
Pakistan KSE 100	115,532.43	0.54	-1.26
Philippines PSEi	6,006.34	3.15	-8.00
Singapore STI	3,469.47	-2.01	-8.40
Sri Lanka CSEALL	15,127.71	3.19	-5.12
Taipei, China TWSE	18,459.95	-4.02	-19.86
Thailand SET	1,074.59	-4.50	-23.26
Viet Nam VNINDEX	1,132.79	-6.43	-10.58



Sources: ADB calculations using data from CEIC Data Company and Haver Analytics.



Sources: CEIC Data Company and Haver Analytics.

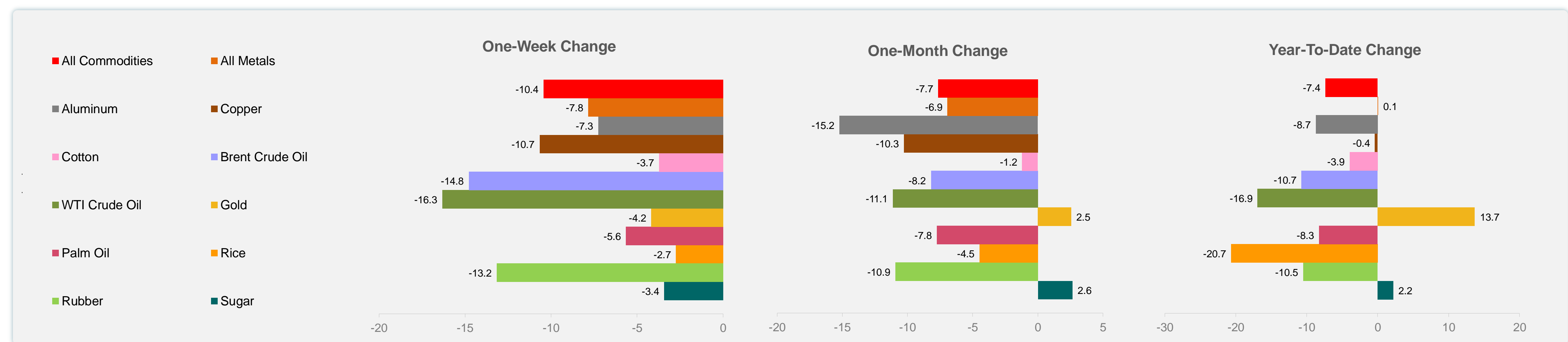
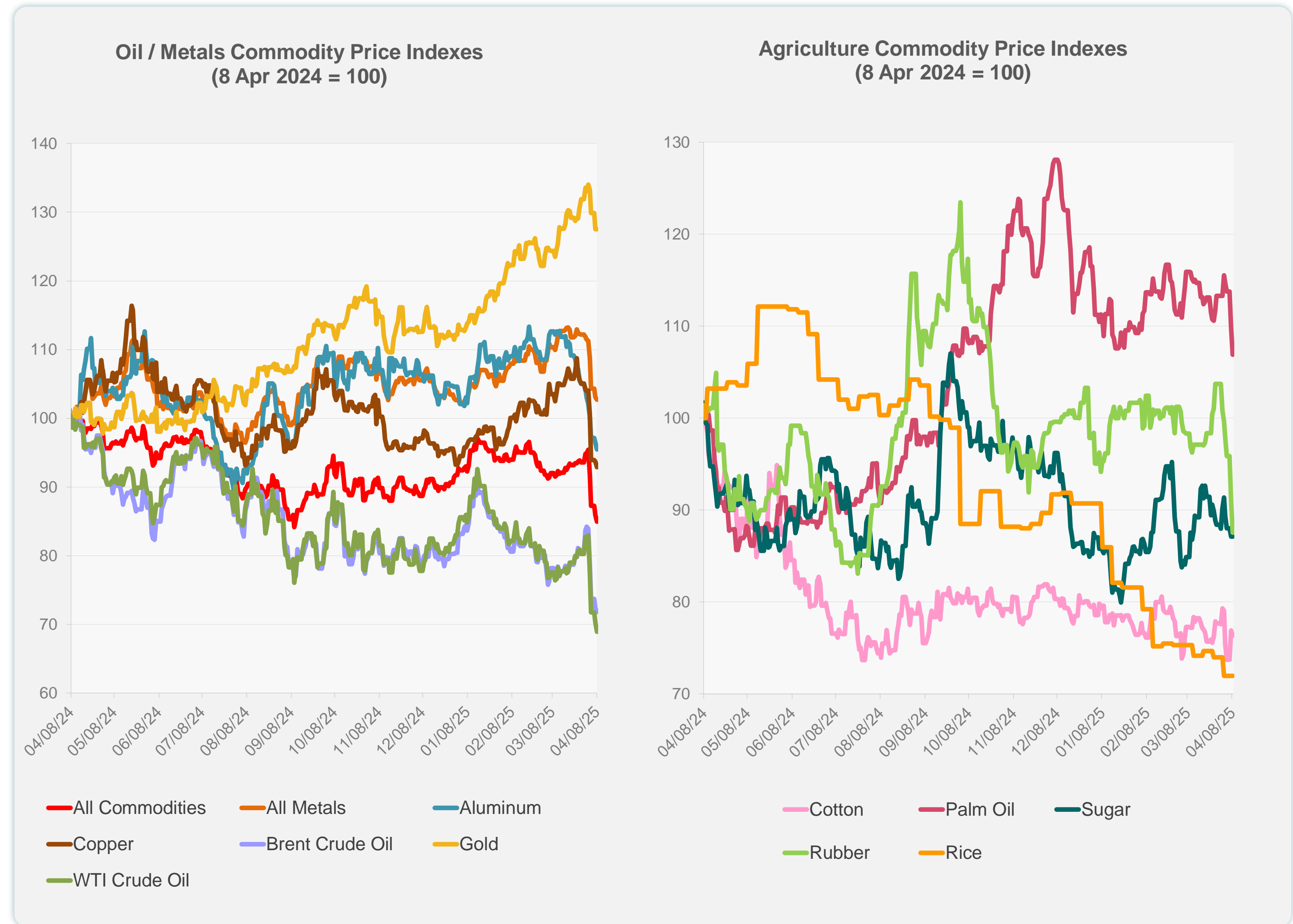
Daily Market Watch
COMMODITY PRICES

9 April 2025, 9:00 AM Manila

	Unit	Latest Closing	% change from Previous Day	% change from 01-Jan-25
S&P All Commodities	US\$	509.12	-1.06	-7.37
S&P All Metals	US\$	307.58	-0.32	0.06
Aluminum	US\$/metric ton	2,306.33	-0.99	-8.72
Copper	US\$/metric ton	8,621.34	-0.83	-0.36
Cotton	US cents/lb	63.30	-0.69	-3.95
Brent Crude Oil	US\$/barrel	66.15	-0.77	-10.73
WTI Crude Oil	US\$/barrel	59.58	-1.85	-16.93
Gold	US\$/troy oz	2,983.27	0.00	13.67
Palm Oil	US\$/metric tonne	1,009.35	-2.55	-8.25
Rice ¹	US\$/metric ton	426.00	0.00	-20.67
Rubber ²	US\$/kg	211.90	-3.64	-10.52
Sugar	US cents/lb	18.60	0.00	2.20

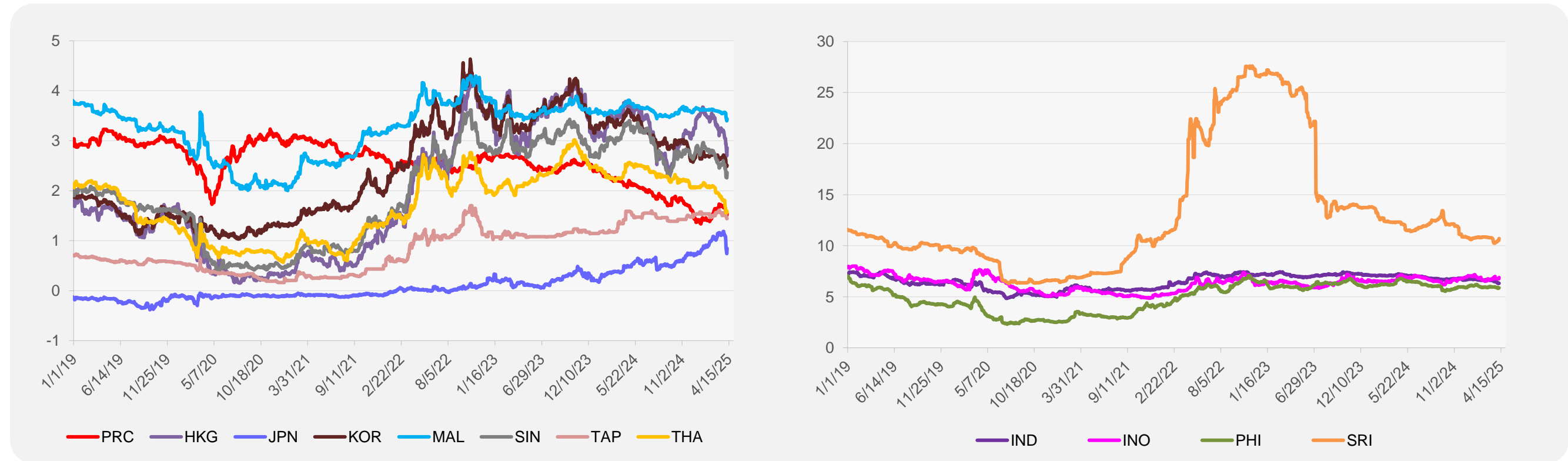
¹ Latest closing price from 2 April 2025.

² Singapore Exchange, Ribbed Smoked Sheet Rubber.

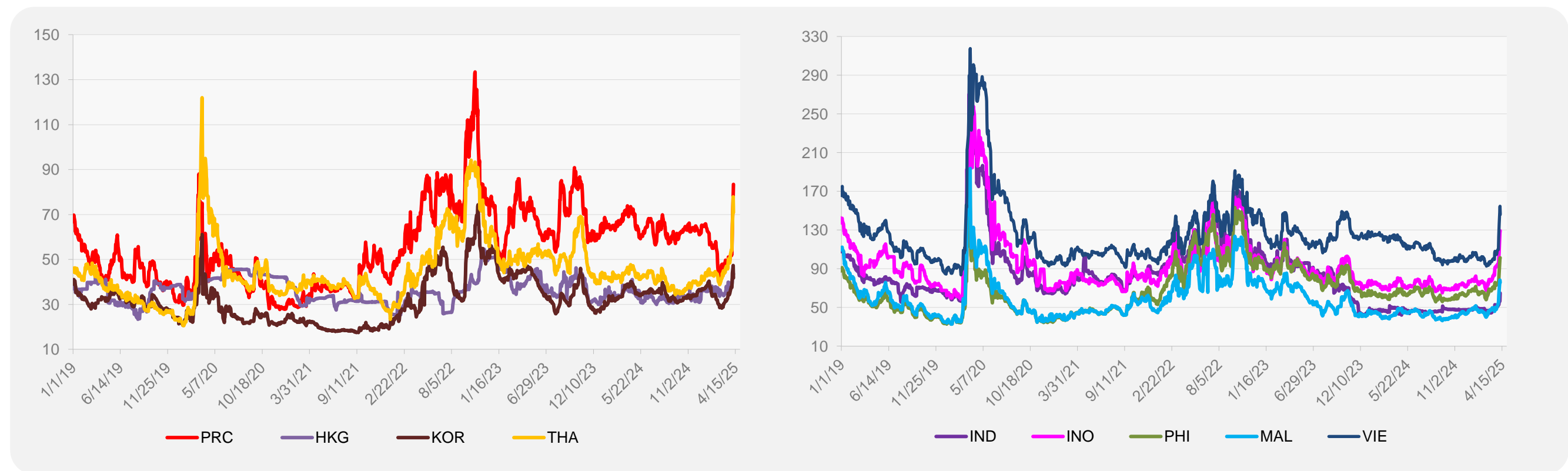


Source: ADB calculations using data from Bloomberg.

5-YEAR LOCAL CURRENCY GOVERNMENT BOND YIELDS (%)



5-YEAR CREDIT DEFAULT SWAP¹



¹ In USD and based on sovereign bonds.
Source: ADB calculations using data from Bloomberg.