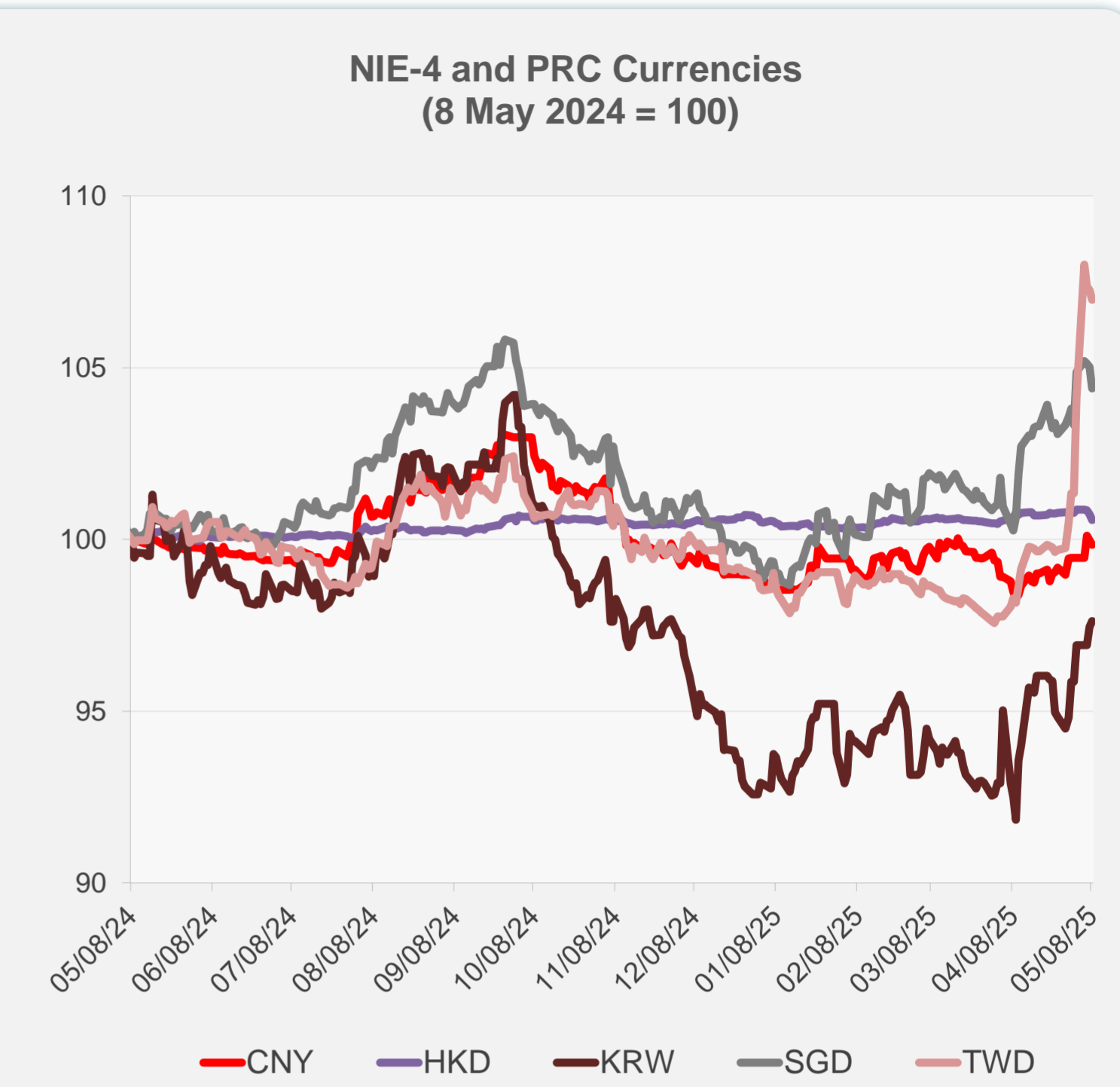


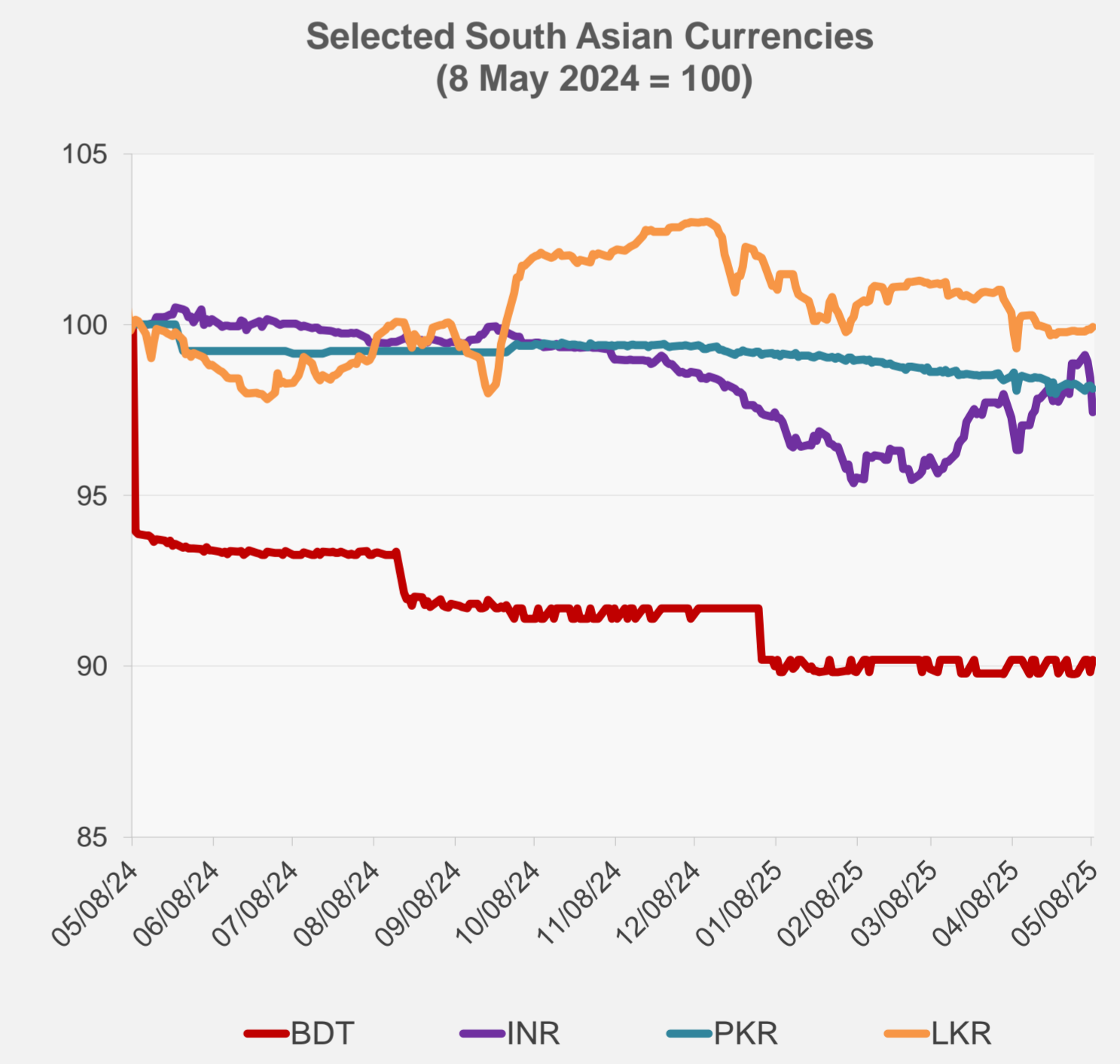
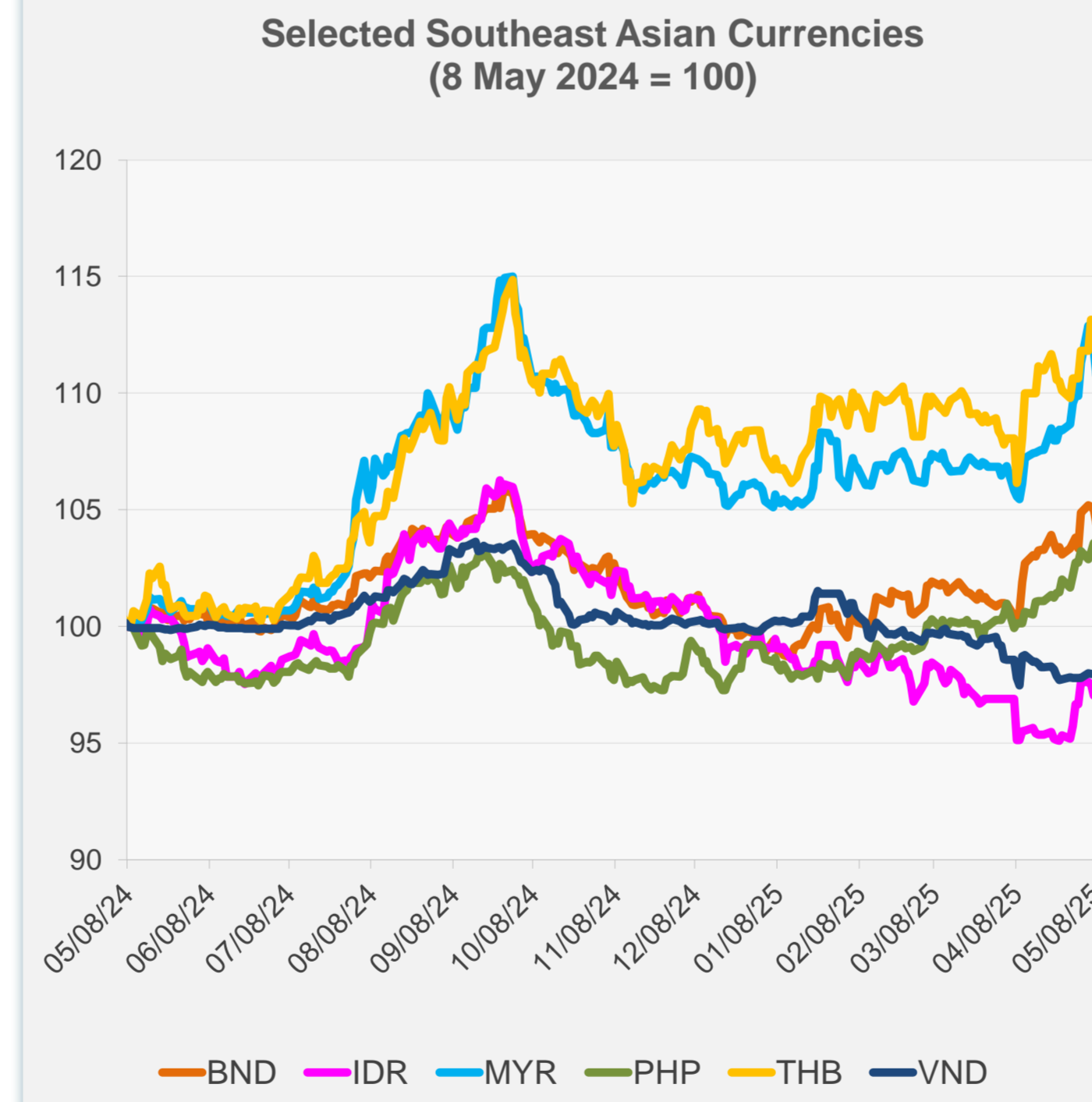
	Latest Closing	% change from Previous Day	% change from 01-Jan-25
Euro	0.89	-0.79	8.91
Japanese yen (JPY)	145.03	-1.20	8.36
Bangladeshi taka (BDT)	121.50	0.41	-1.65
Brunei dollar (BND)	1.30	-0.60	5.07
Chinese yuan (CNY)	7.24	-0.15	0.87
Hong Kong dollar (HKD)	7.77	-0.17	-0.07
Indian rupee (INR)	85.72	-1.03	-0.12
Indonesian rupiah (IDR)	16,494.00	0.25	-2.42
Korean won (KRW)	1,395.90	0.17	5.46
Malaysian ringgit (MYR)	4.28	-0.98	4.45
Pakistan rupee (PKR)	281.45	-0.10	-1.09
Philippine peso (PHP)	55.62	-0.38	4.01
Singapore dollar (SGD)	1.30	-0.60	5.07
Sri Lanka rupee (LKR)	299.10	0.08	-2.04
Taipei,China NT dollar (TWD)	30.30	-0.26	8.21
Thai baht (THB)	32.85	-0.42	3.80
Vietnamese dong (VND)	25,963.50	0.00	-1.84



Legend: Euro (Green), JPY (Blue)

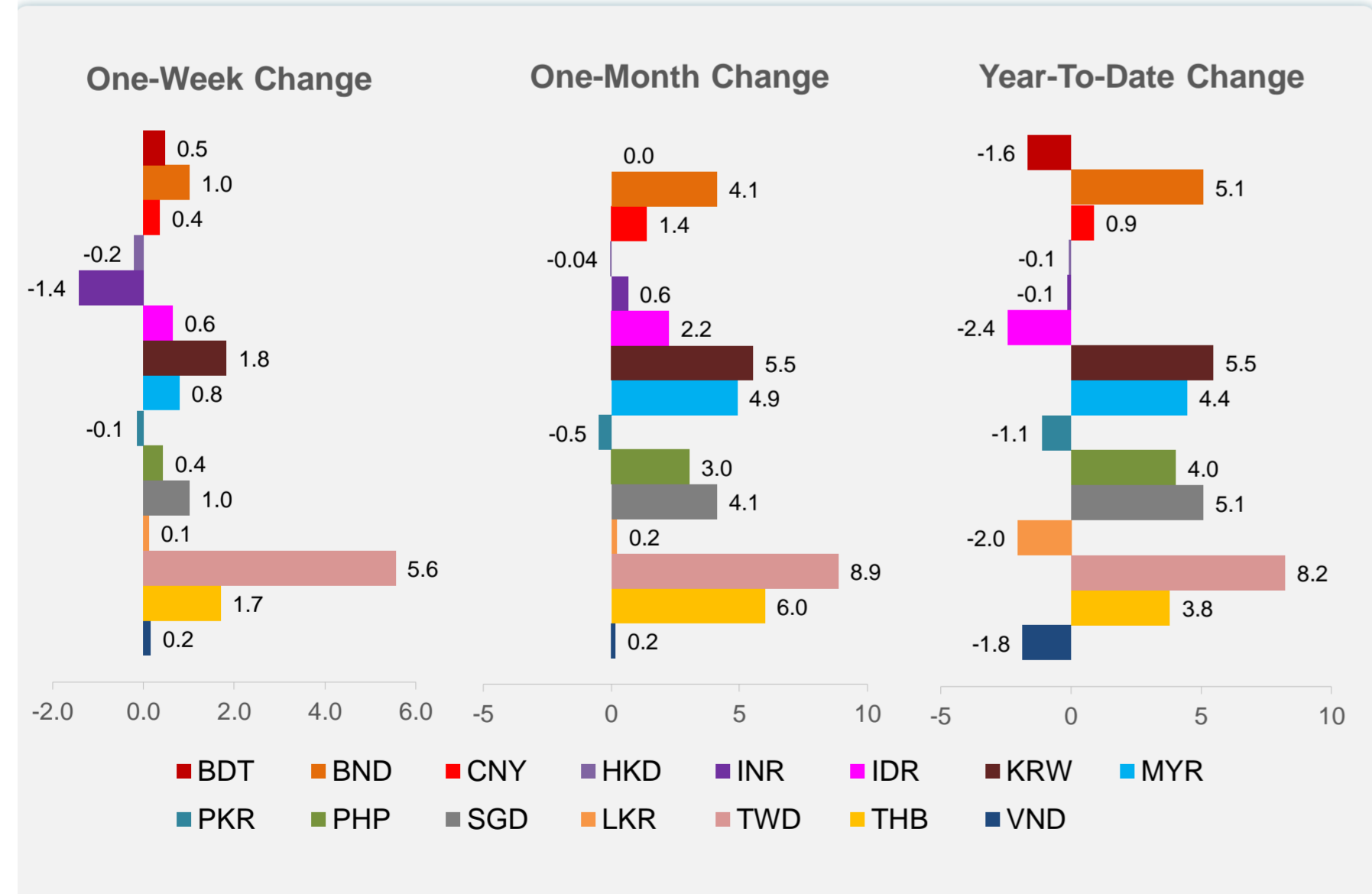
Legend: CNY (Red), HKD (Purple), KRW (Brown), SGD (Grey), TWD (Pink)

NIE = Newly Industrialized Economies

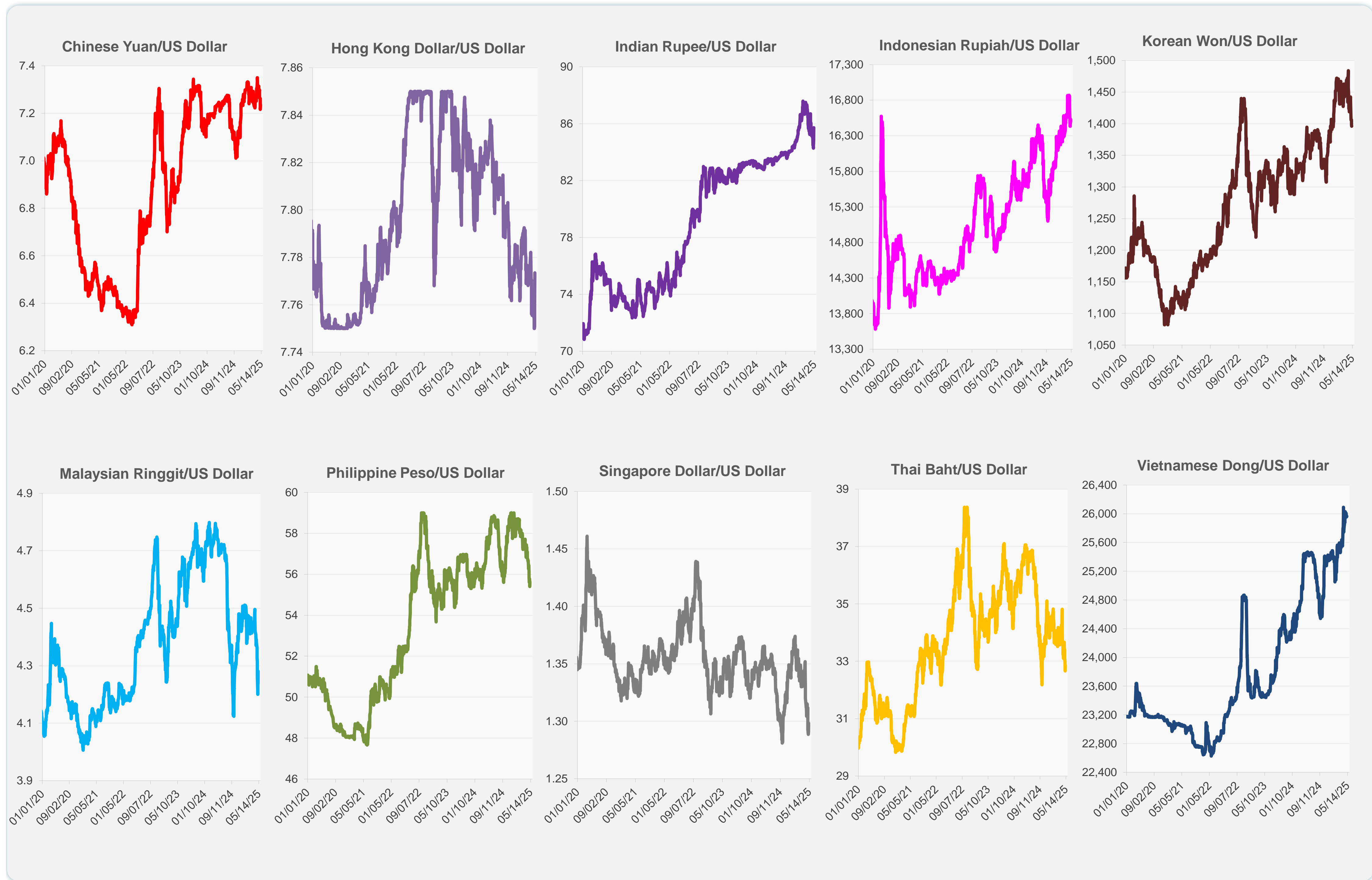


Legend: BND (Orange), IDR (Pink), MYR (Light Blue), PHP (Green), THB (Yellow), VND (Dark Blue)

Legend: BDT (Red), INR (Purple), PKR (Teal), LKR (Orange)



Note: Negative/Decreasing values indicate depreciation of local currency, and positive/increasing values indicate appreciation.  
Source: ADB calculations using data from Haver Analytics.

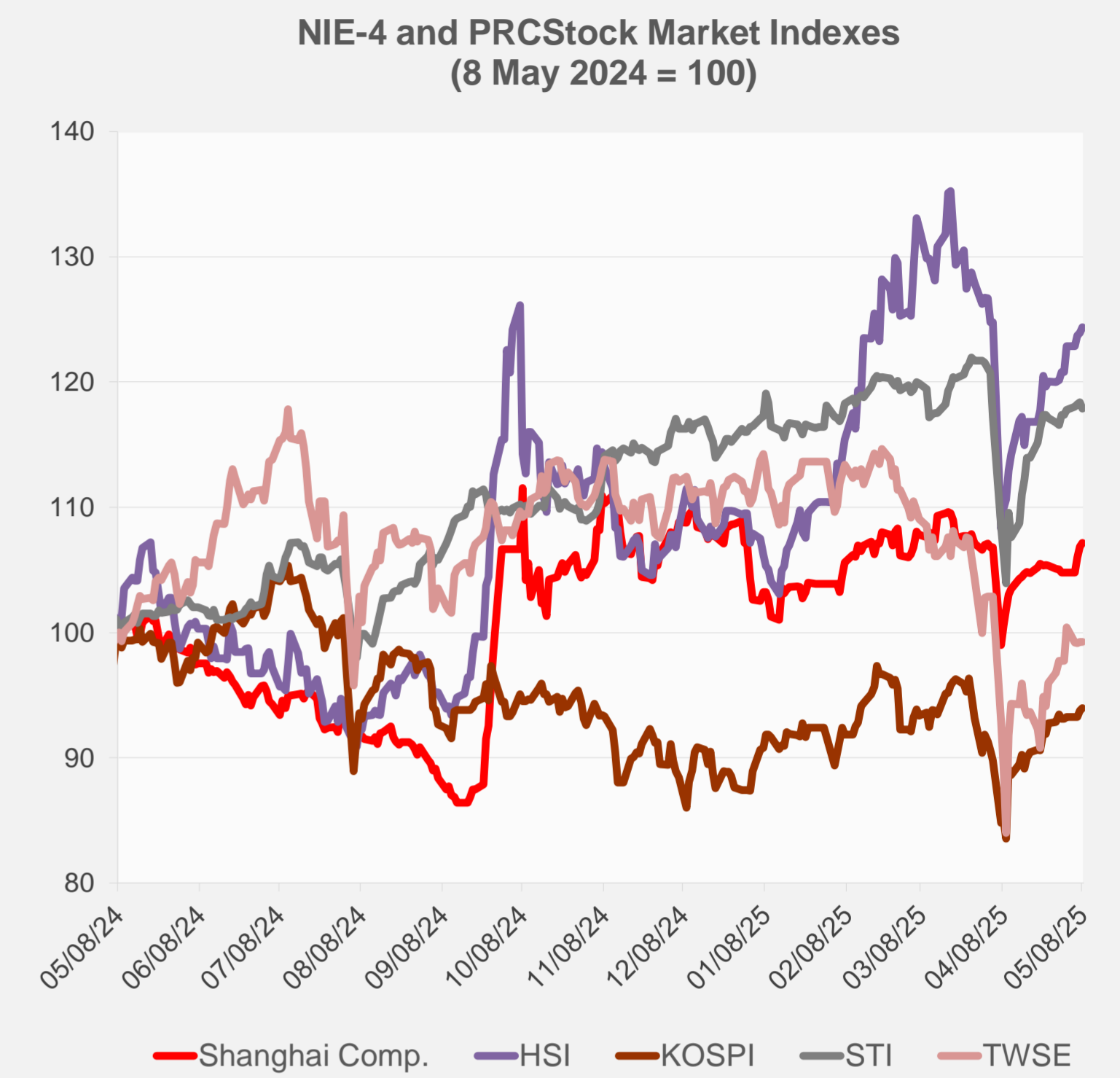
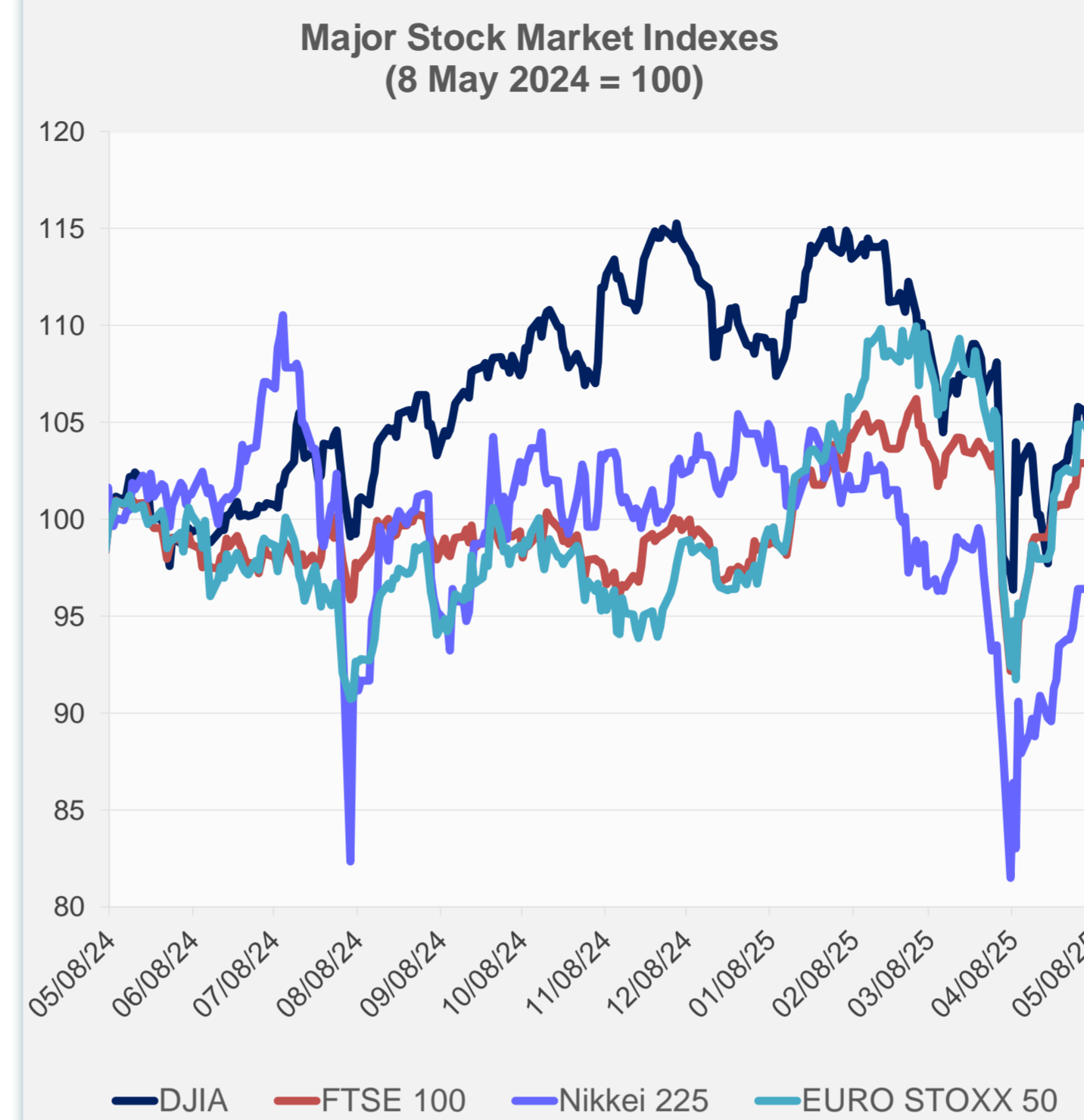


Source: Haver Analytics.

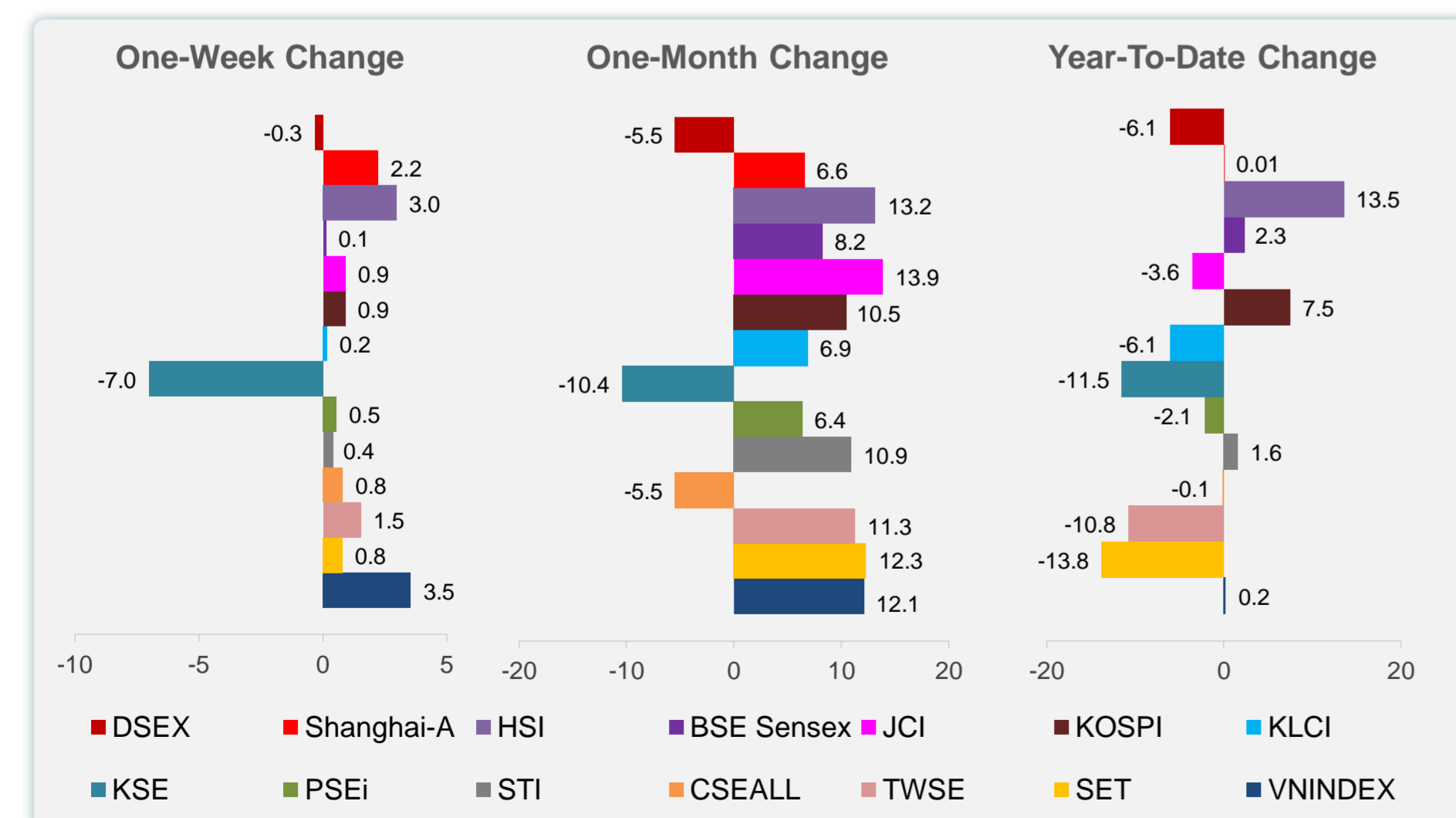
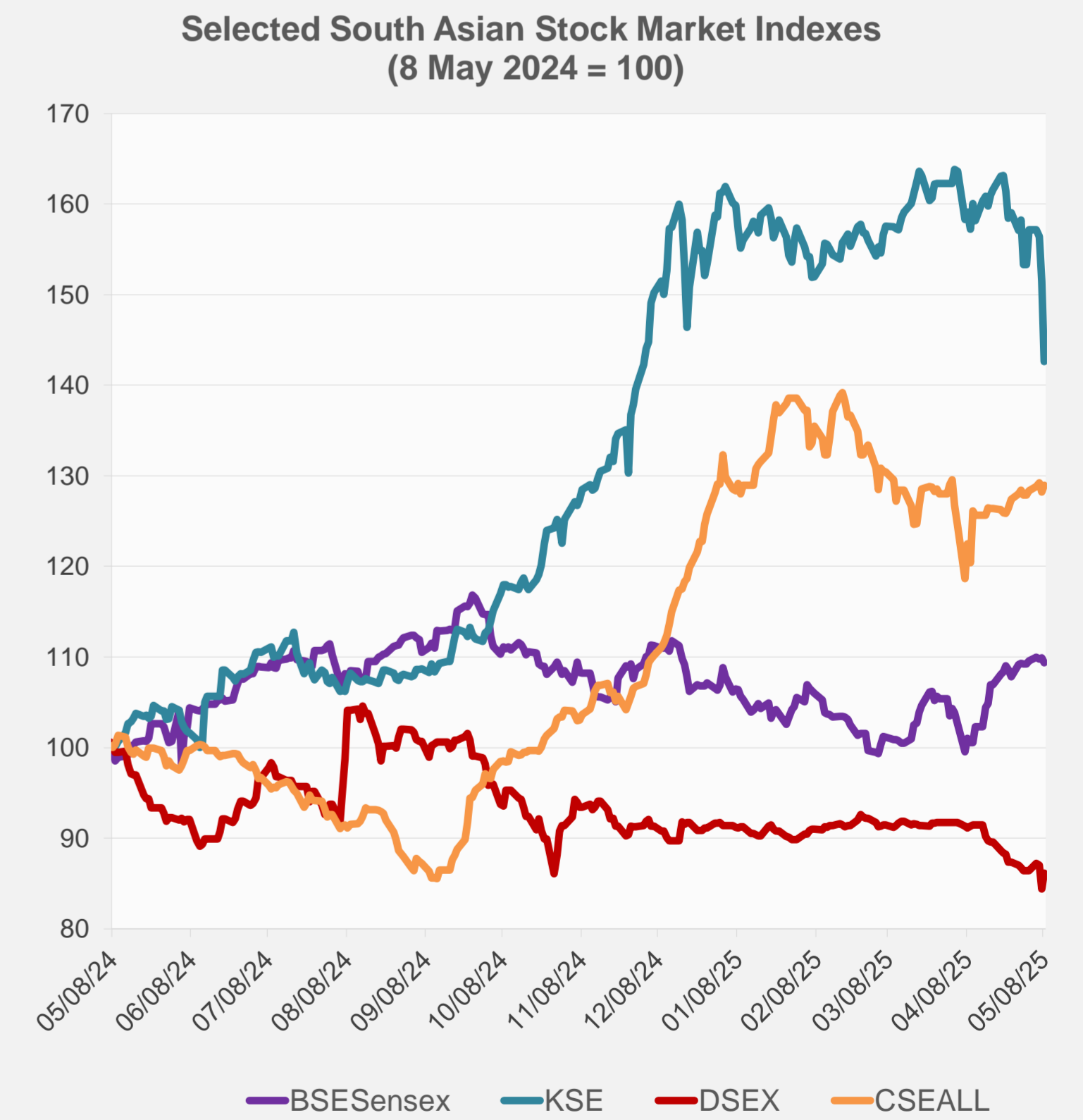
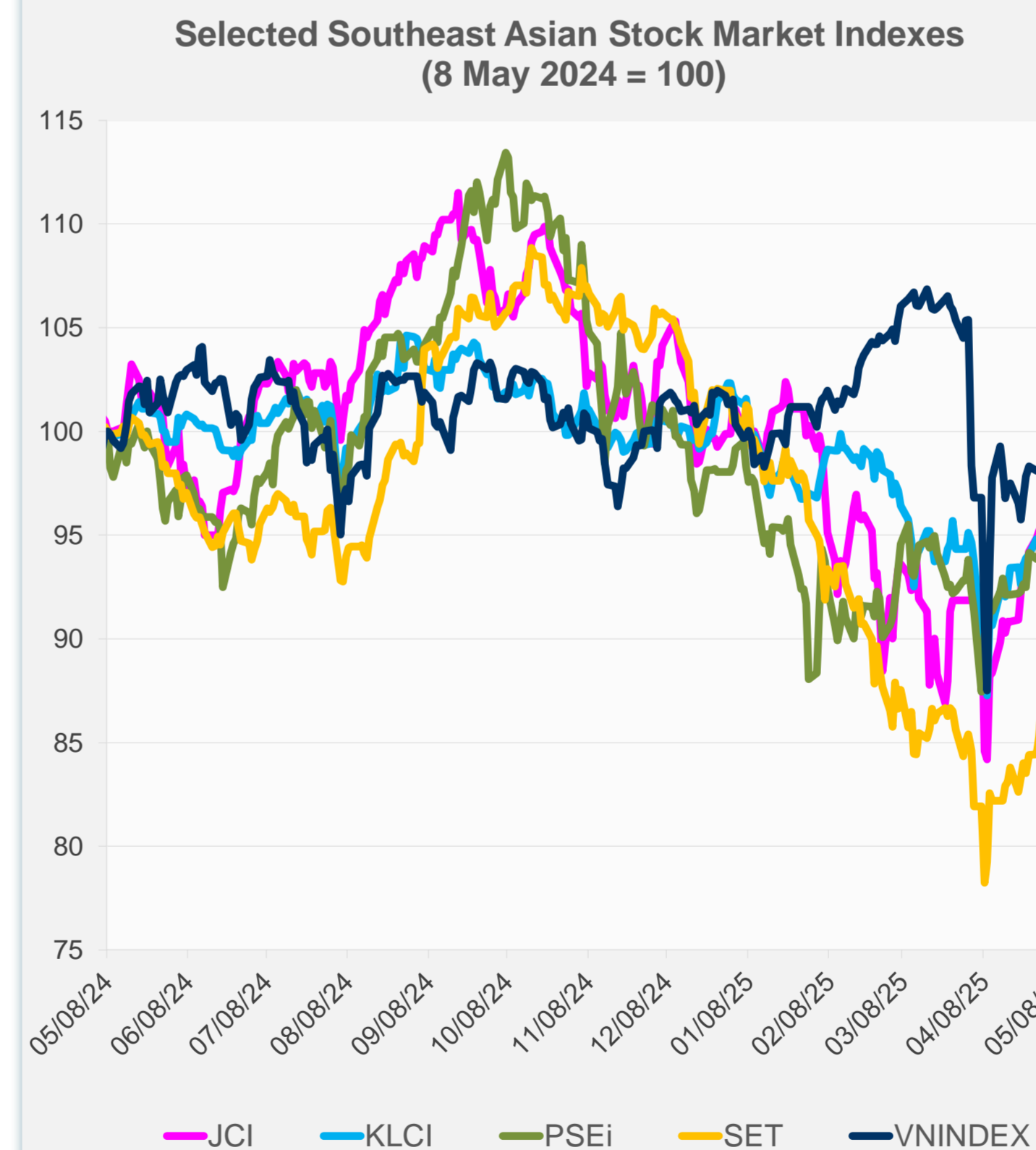


Daily Market Watch  
**STOCK INDEXES**

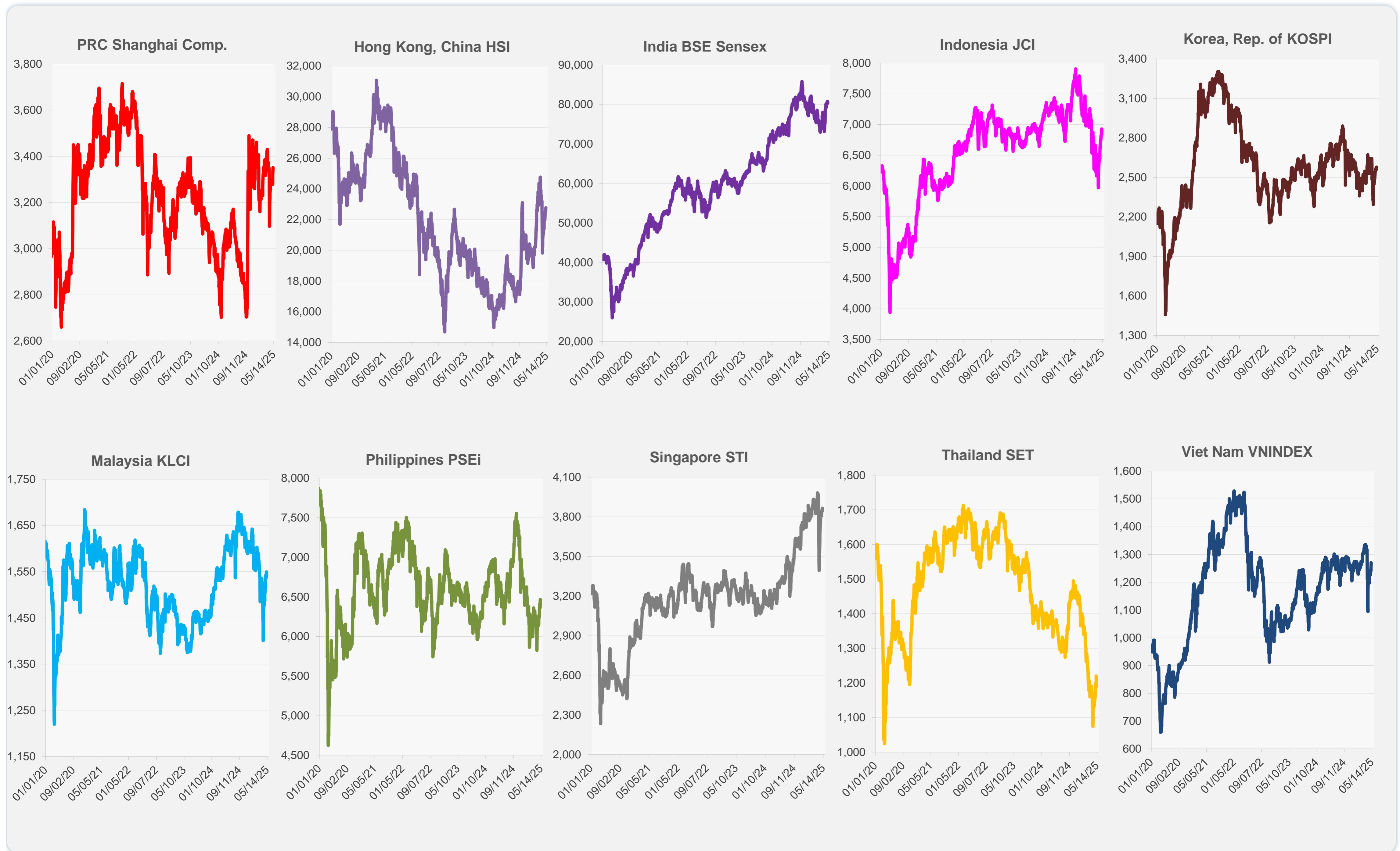
	Latest Closing	% change from Previous Day	% change from 01-Jan-25
US Dow Jones Ind Avg	41,368.45	0.62	-2.76
US NASDAQ	17,928.14	1.07	-7.16
US S&P 500	5,663.94	0.58	-3.70
UK FTSE 100	8,531.61	-0.32	4.39
EURO STOXX 50	5,288.94	1.12	8.03
Japan NIKKEI 225	36,928.63	0.41	-7.43
Bangladesh DSEX	4,902.28	2.08	-6.05
PRC Shanghai Comp.	3,352.00	0.28	0.01
Hong Kong, China HSI	22,775.92	0.37	13.54
India BSE Sensex	80,334.81	-0.51	2.33
Indonesia JCI	6,827.75	-1.42	-3.56
Korea, Rep. of KOSPI	2,579.48	0.22	7.50
Malaysia KLCI	1,542.74	-0.46	-6.06
Pakistan KSE 100	103,526.81	-5.89	-11.52
Philippines PSEi	6,389.49	-1.17	-2.13
Singapore STI	3,848.22	-0.44	1.60
Sri Lanka CSEALL	15,925.92	0.53	-0.12
Taipei, China TWSE	20,543.40	-0.02	-10.82
Thailand SET	1,206.59	-1.12	-13.83
Viet Nam VNINDEX	1,269.80	1.55	0.24



NIE = Newly Industrialized Economies



Sources: ADB calculations using data from CEIC Data Company and Haver Analytics.



Sources: CEIC Data Company and Haver Analytics.



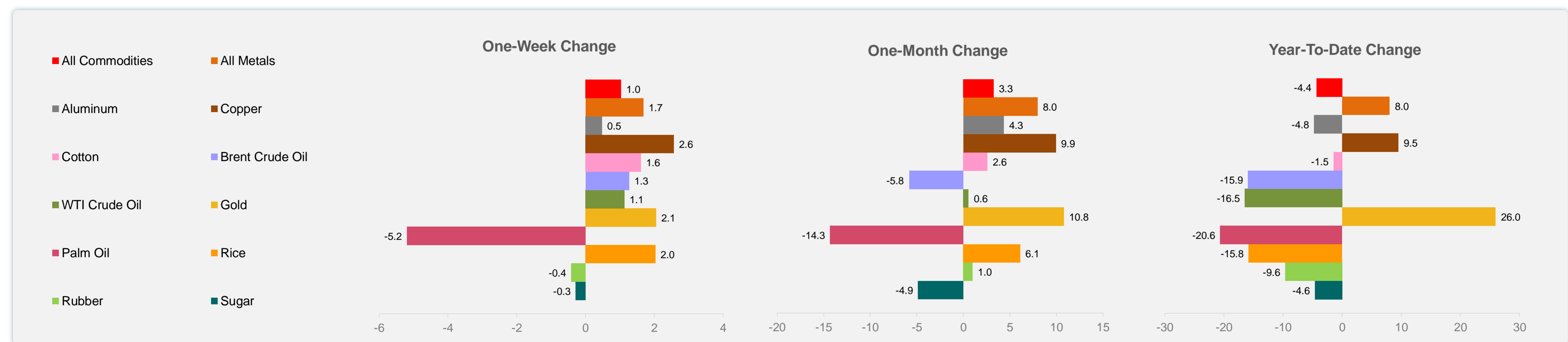
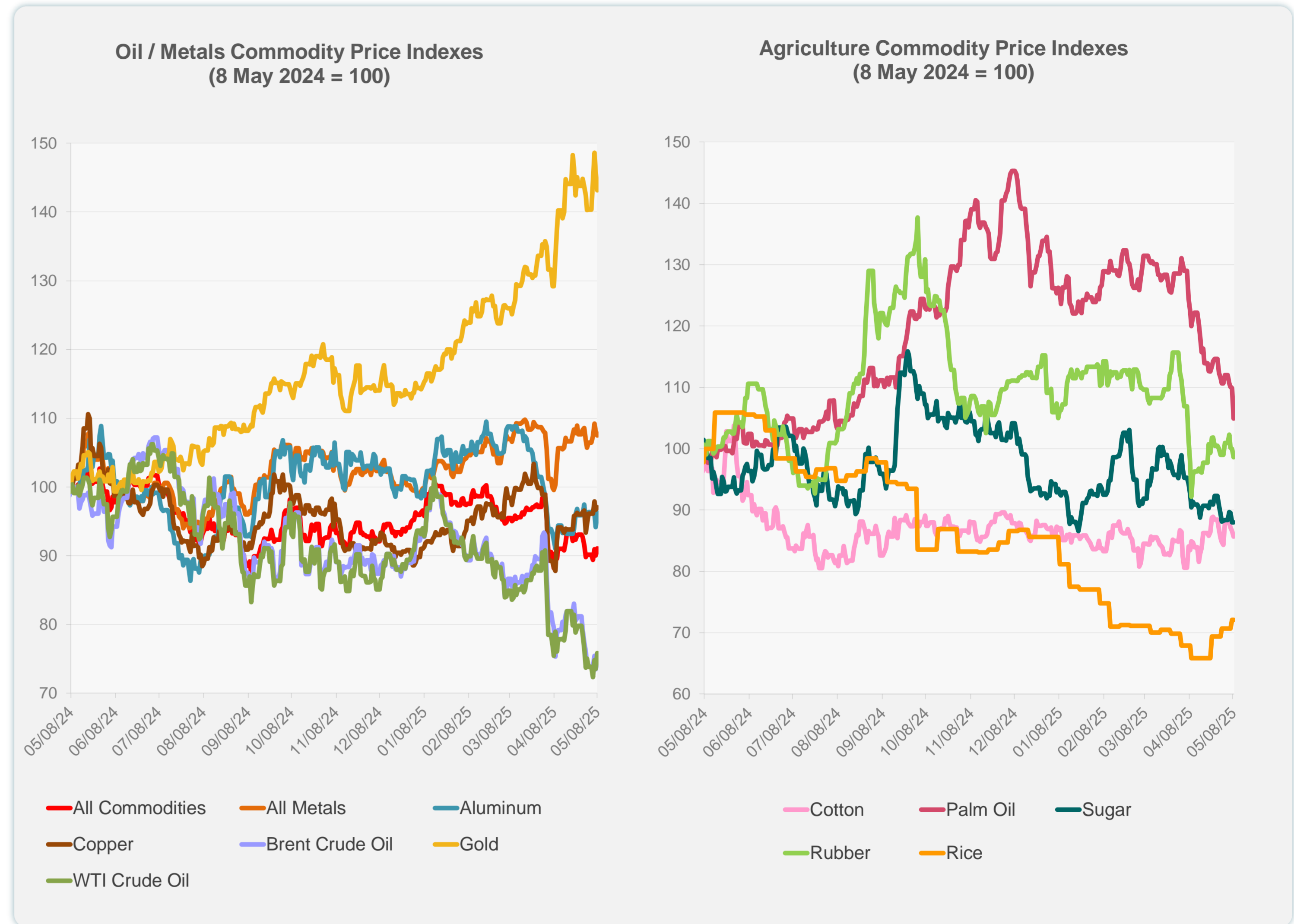
Daily Market Watch  
**COMMODITY PRICES**

9 May 2025, 9:00 AM Manila

	Unit	Latest Closing	% change from Previous Day	% change from 01-Jan-25
S&P All Commodities	US\$	525.67	1.18	-4.36
S&P All Metals	US\$	332.11	-0.58	8.04
Aluminum	US\$/metric ton	2,406.61	2.21	-4.76
Copper	US\$/metric ton	9,477.32	0.38	9.53
Cotton	US cents/lb	64.94	-1.05	-1.46
Brent Crude Oil	US\$/barrel	62.30	2.01	-15.93
WTI Crude Oil	US\$/barrel	59.91	3.17	-16.47
Gold	US\$/troy oz	3,305.72	-1.75	25.96
Palm Oil	US\$/metric tonne	873.07	-4.55	-20.64
Rice <sup>1</sup>	US\$/metric ton	452.00	0.00	-15.83
Rubber <sup>2</sup>	US\$/kg	214.00	-1.34	-9.63
Sugar	US cents/lb	17.36	0.00	-4.62

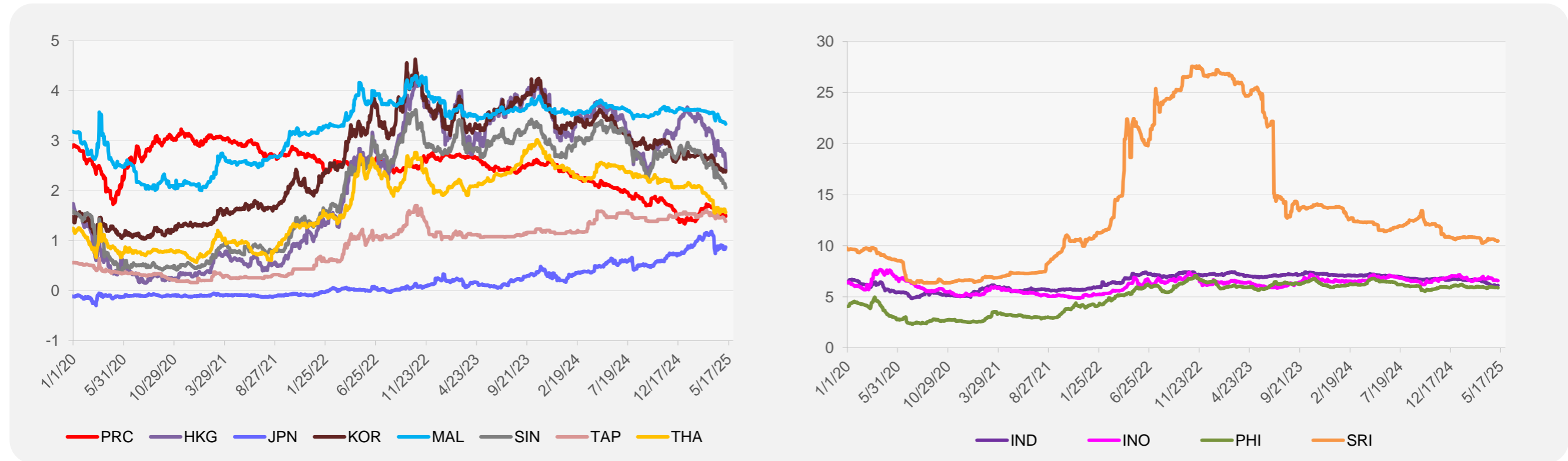
<sup>1</sup> Latest closing price from 7 May 2025.

<sup>2</sup> Singapore Exchange, Ribbed Smoked Sheet Rubber.

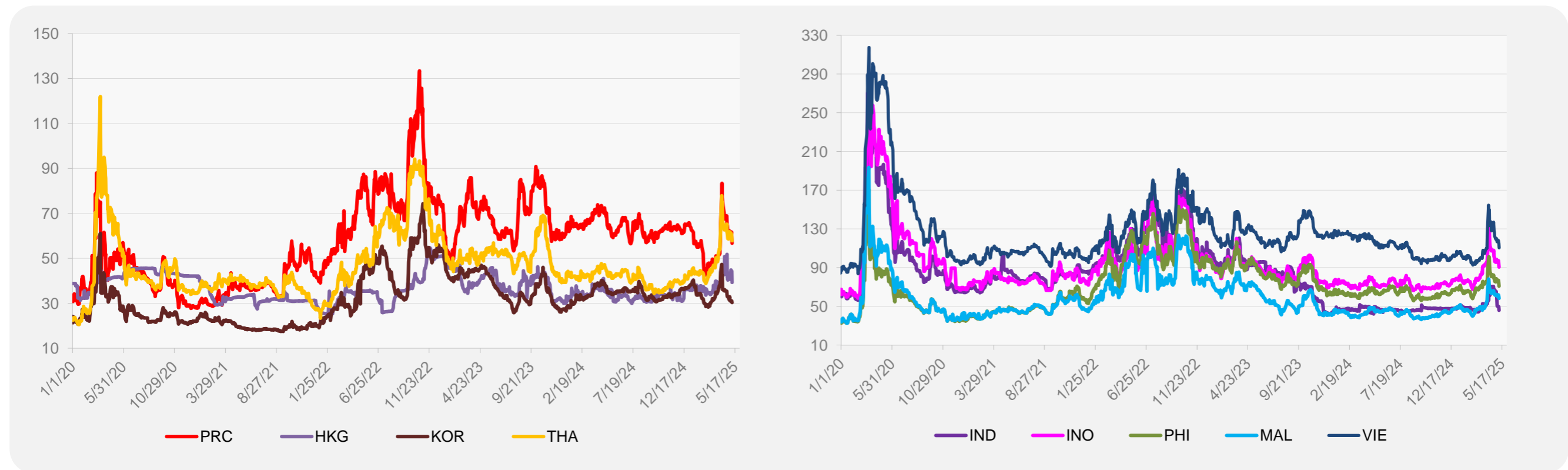


Source: ADB calculations using data from Bloomberg.

### 5-YEAR LOCAL CURRENCY GOVERNMENT BOND YIELDS (%)



### 5-YEAR CREDIT DEFAULT SWAP<sup>1</sup>



<sup>1</sup> In USD and based on sovereign bonds.  
Source: ADB calculations using data from Bloomberg.