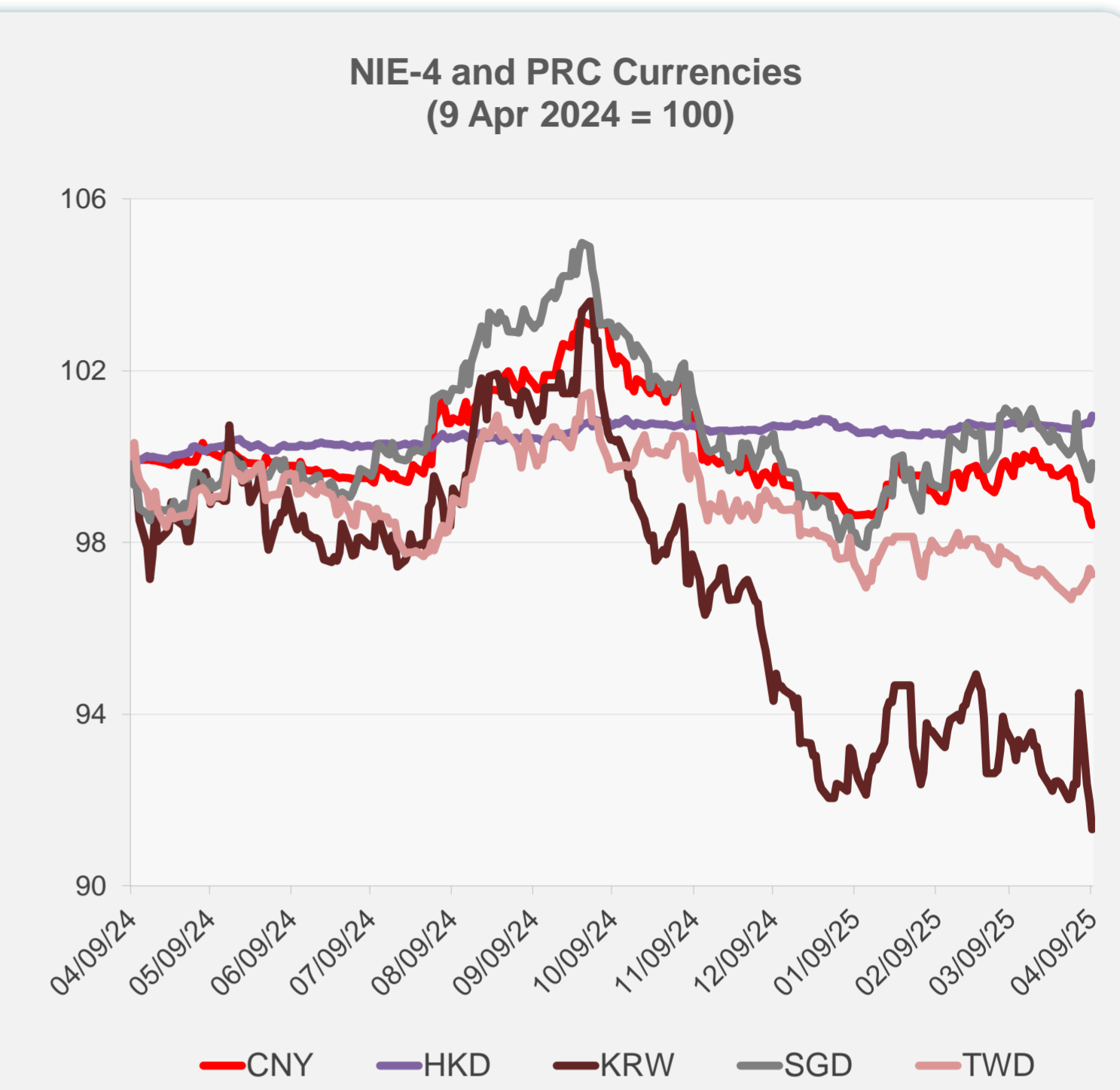


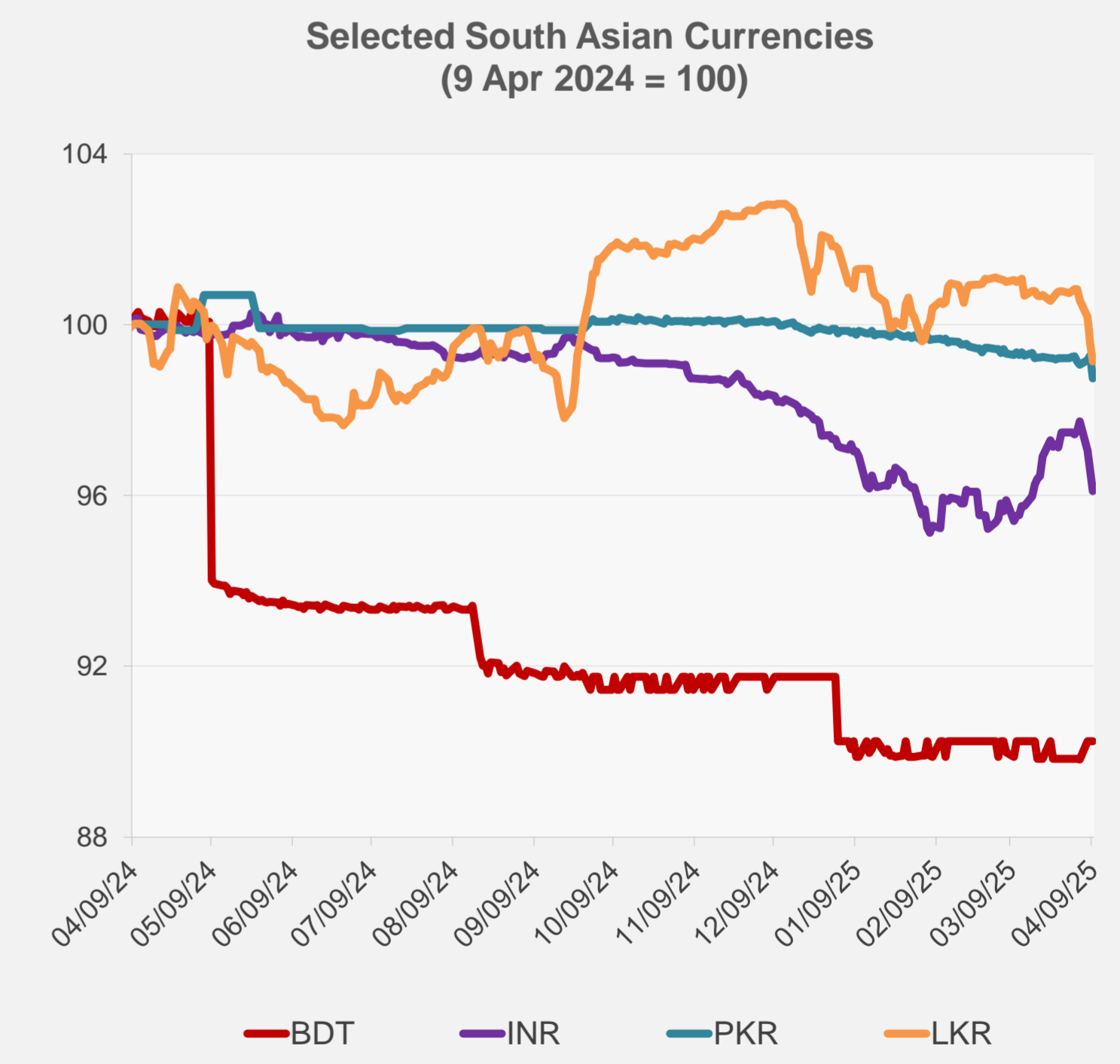
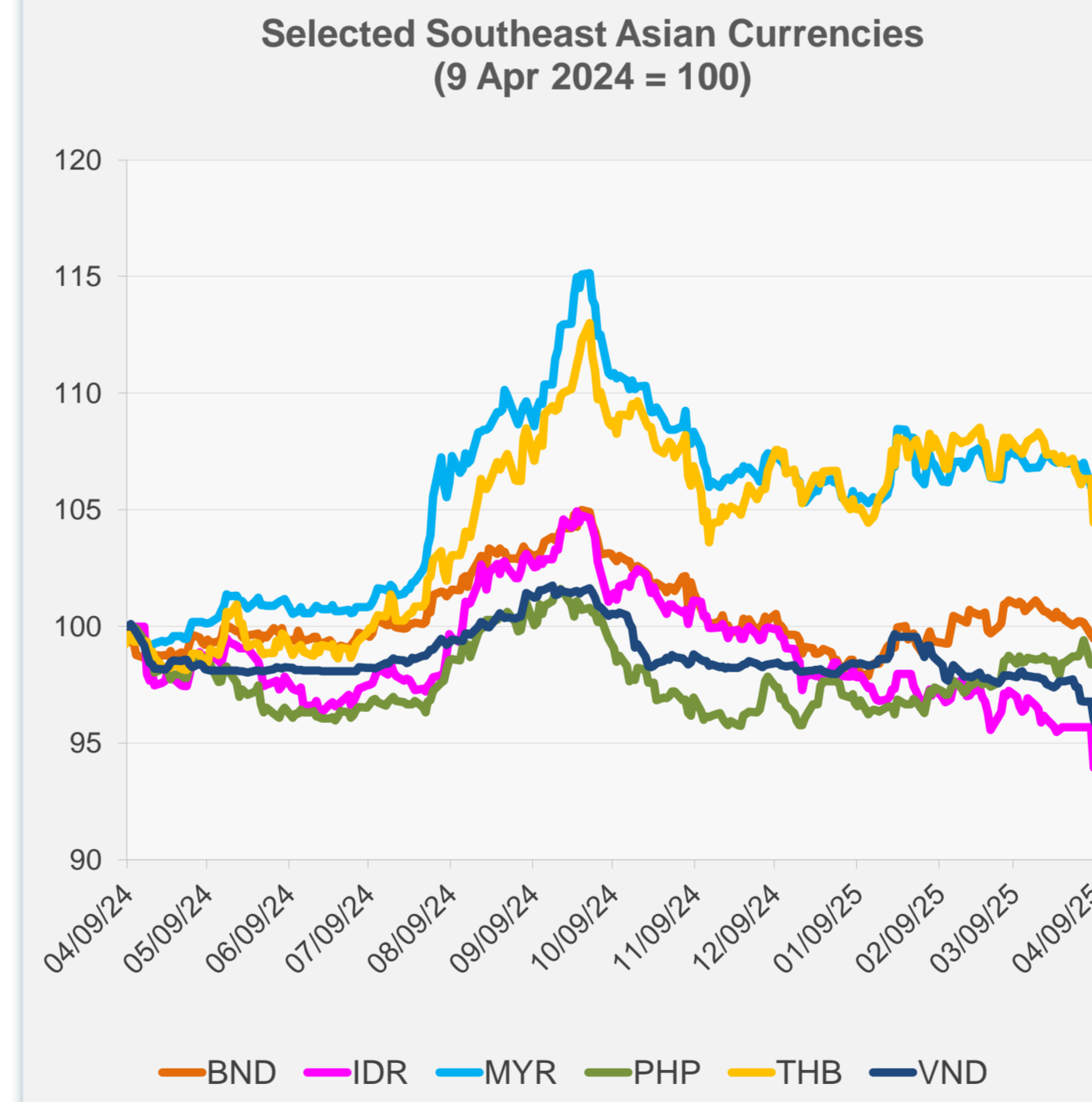
	Latest Closing	% change from Previous Day	% change from 01-Jan-25
Euro	0.91	1.17	6.60
Japanese yen (JPY)	144.77	1.79	8.56
Bangladeshi taka (BDT)	121.50	0.00	-1.65
Brunei dollar (BND)	1.35	0.37	1.28
Chinese yuan (CNY)	7.35	-0.18	-0.69
Hong Kong dollar (HKD)	7.76	0.19	0.15
Indian rupee (INR)	86.70	-0.49	-1.25
Indonesian rupiah (IDR)	16,865.00	0.00	-4.57
Korean won (KRW)	1,483.85	-0.72	-0.79
Malaysian ringgit (MYR)	4.50	-0.11	-0.54
Pakistan rupee (PKR)	281.63	-0.54	-1.15
Philippine peso (PHP)	57.31	0.00	0.93
Singapore dollar (SGD)	1.35	0.37	1.28
Sri Lanka rupee (LKR)	301.00	-0.42	-2.66
Taipei,China NT dollar (TWD)	33.03	-0.13	-0.73
Thai baht (THB)	34.56	0.73	-1.35
Vietnamese dong (VND)	26,090.00	-0.33	-2.32



— Euro — JPY

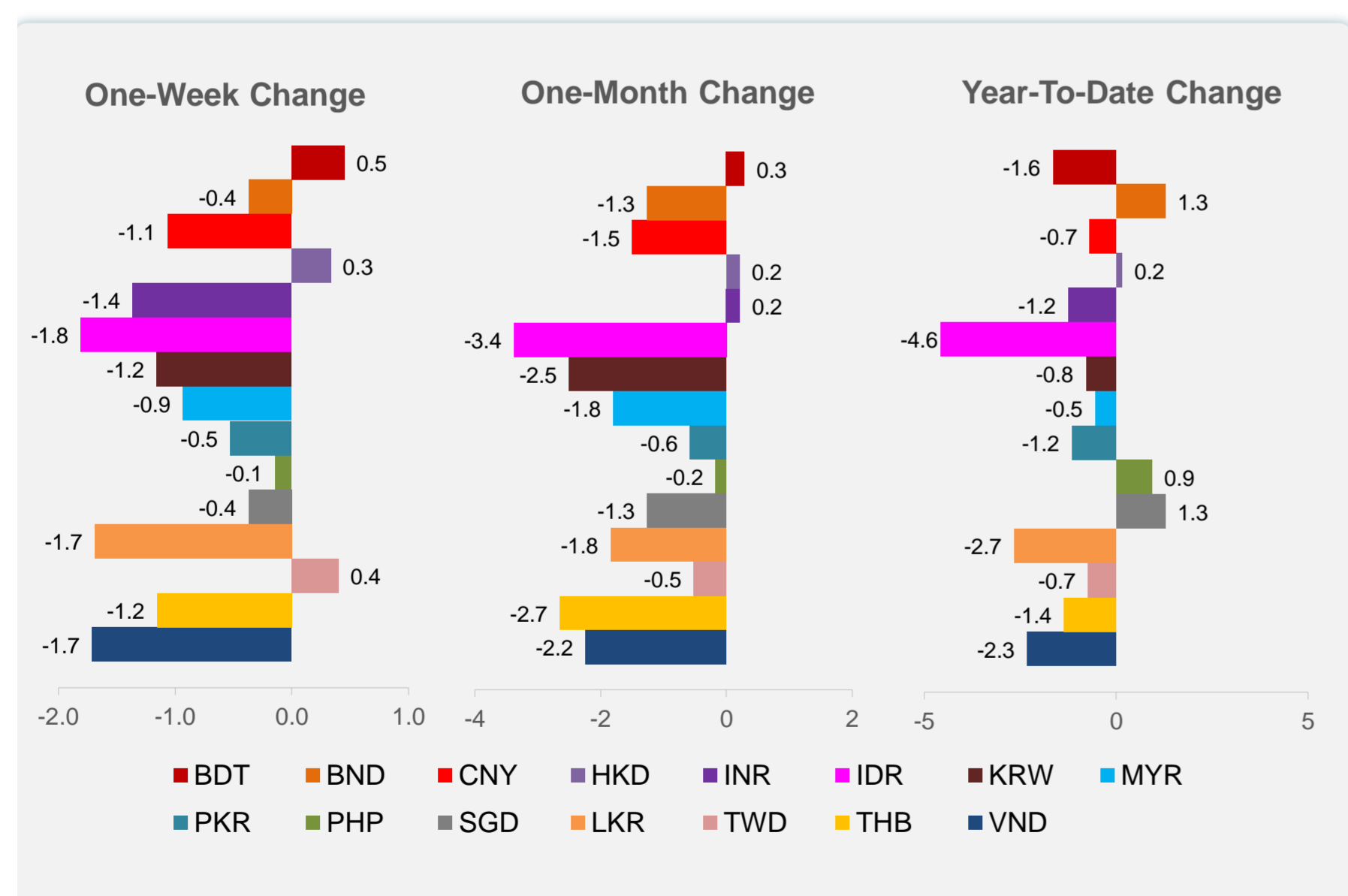
— CNY — HKD — KRW — SGD — TWD

NIE = Newly Industrialized Economies

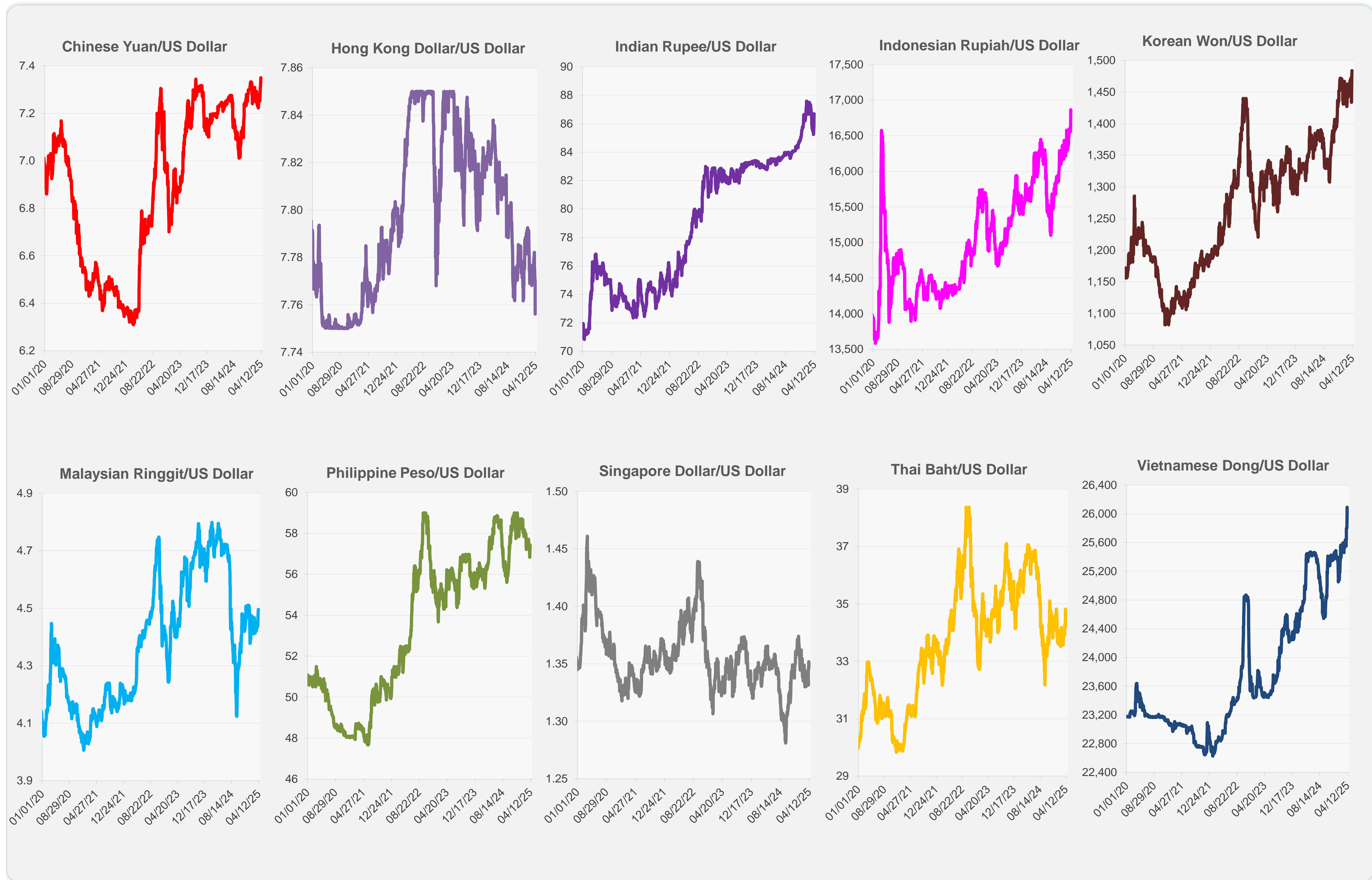


— BND — IDR — MYR — PHP — THB — VND

— BDT — INR — PKR — LKR



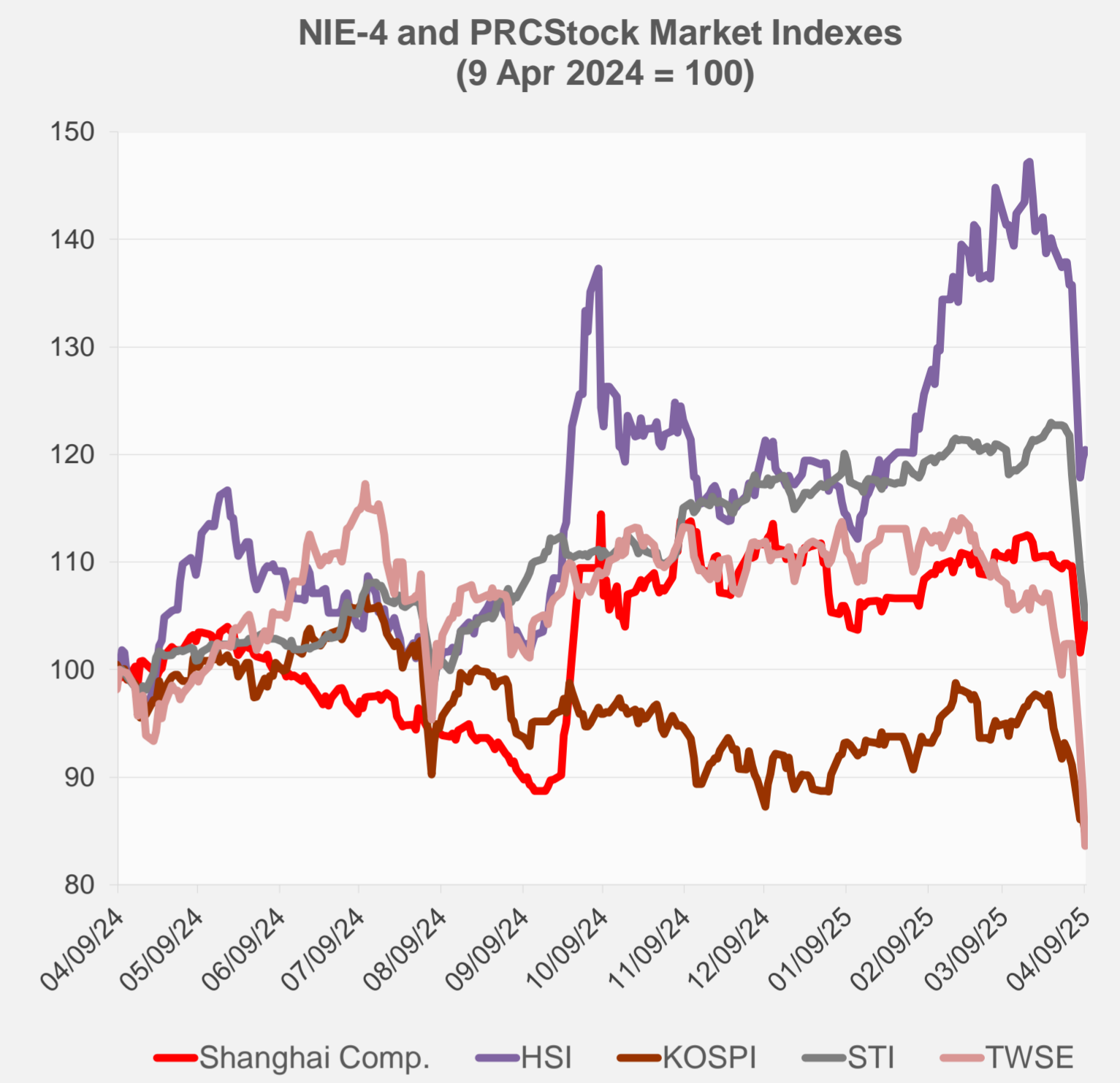
Note: Negative/Decreasing values indicate depreciation of local currency, and positive/increasing values indicate appreciation.  
Source: ADB calculations using data from Haver Analytics.



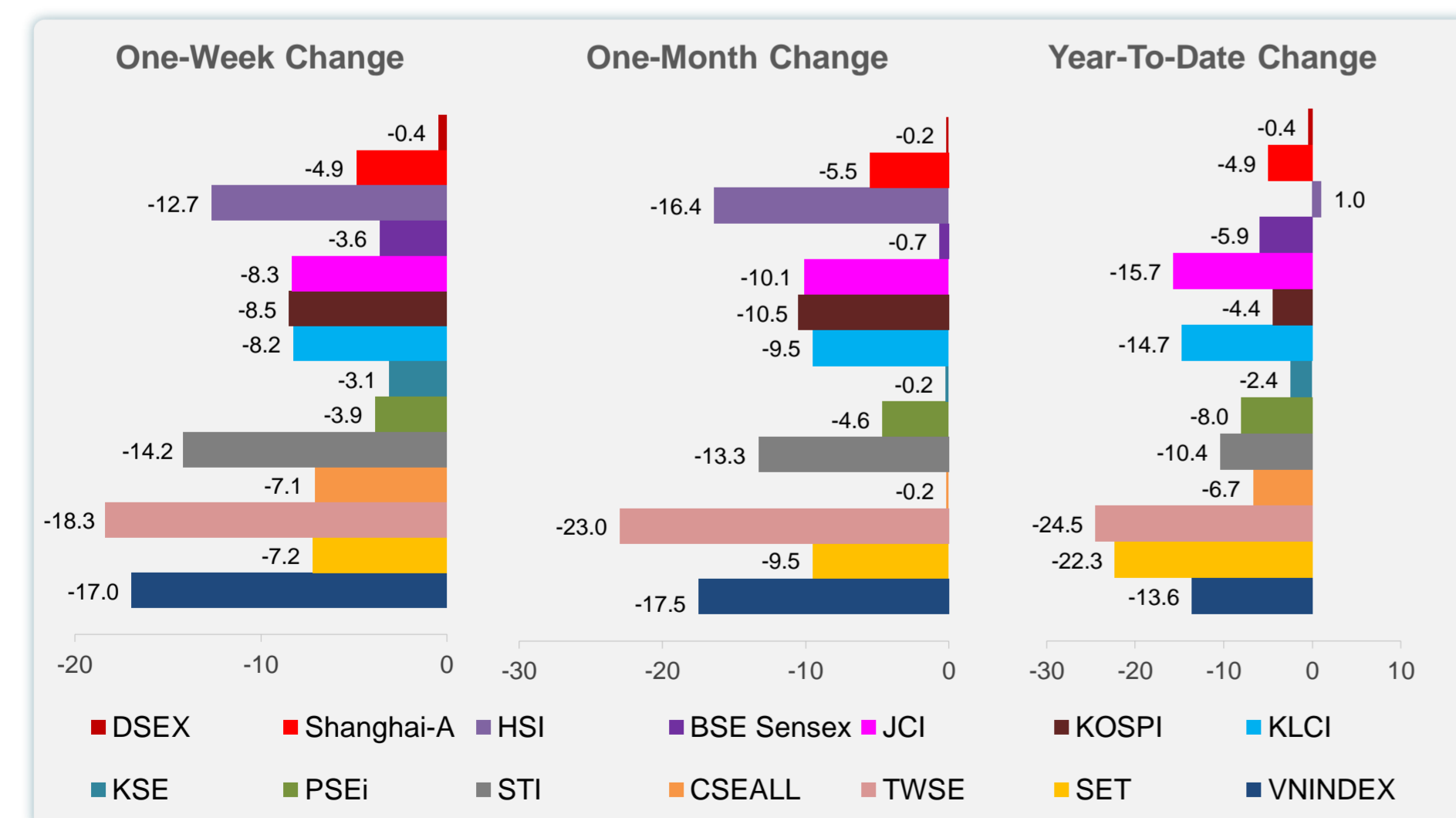
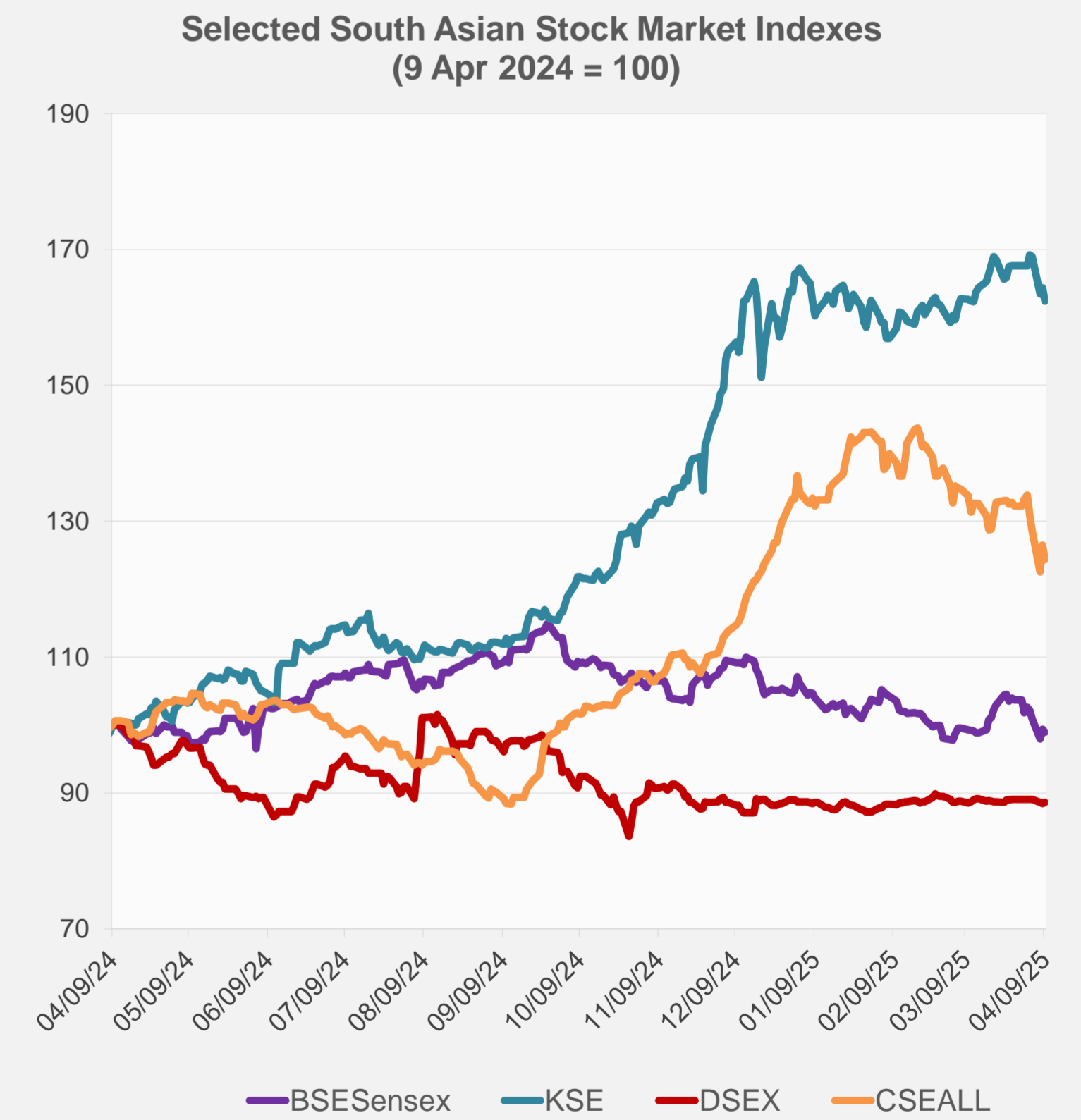
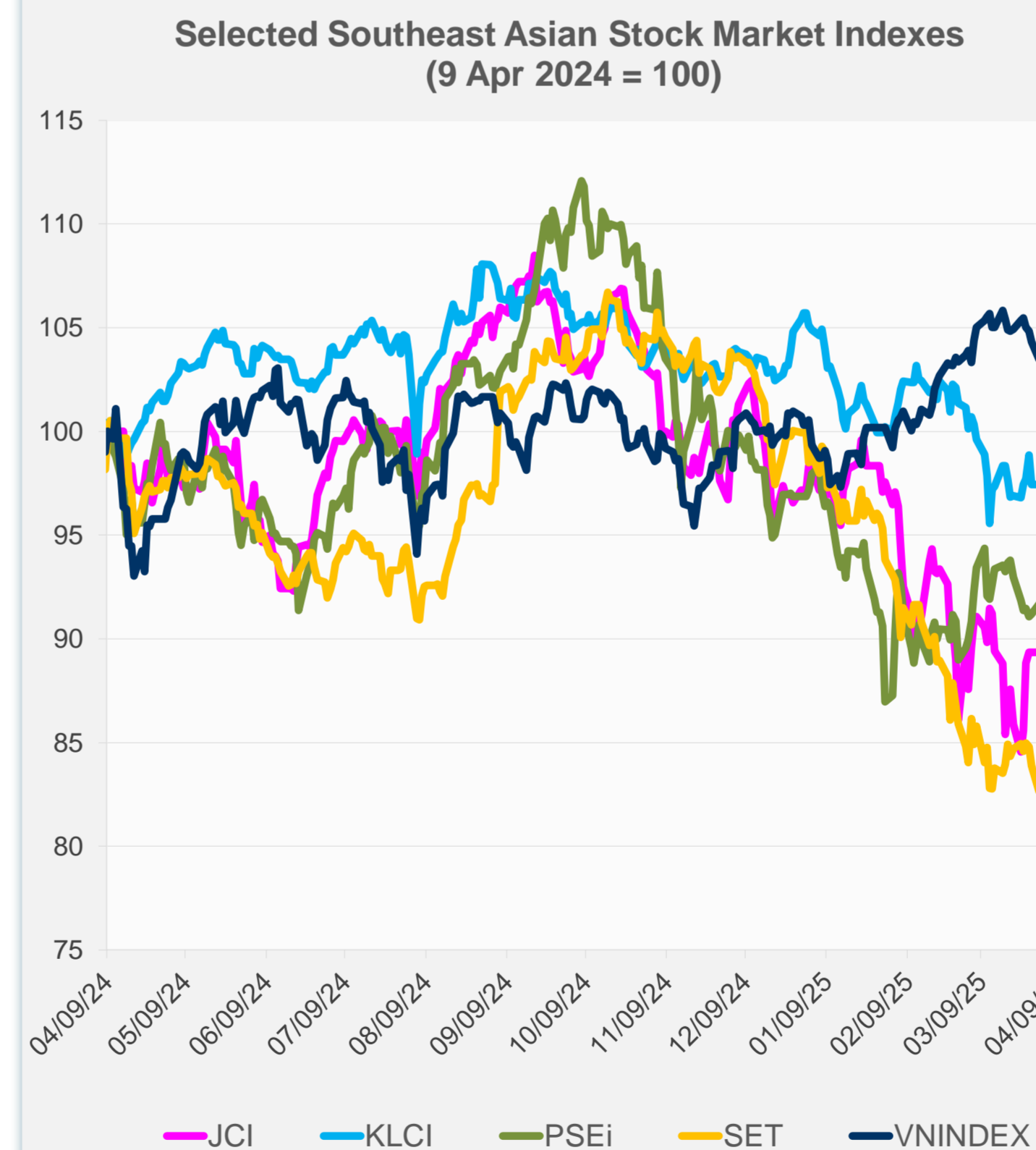
Source: Haver Analytics.

Daily Market Watch  
**STOCK INDEXES**

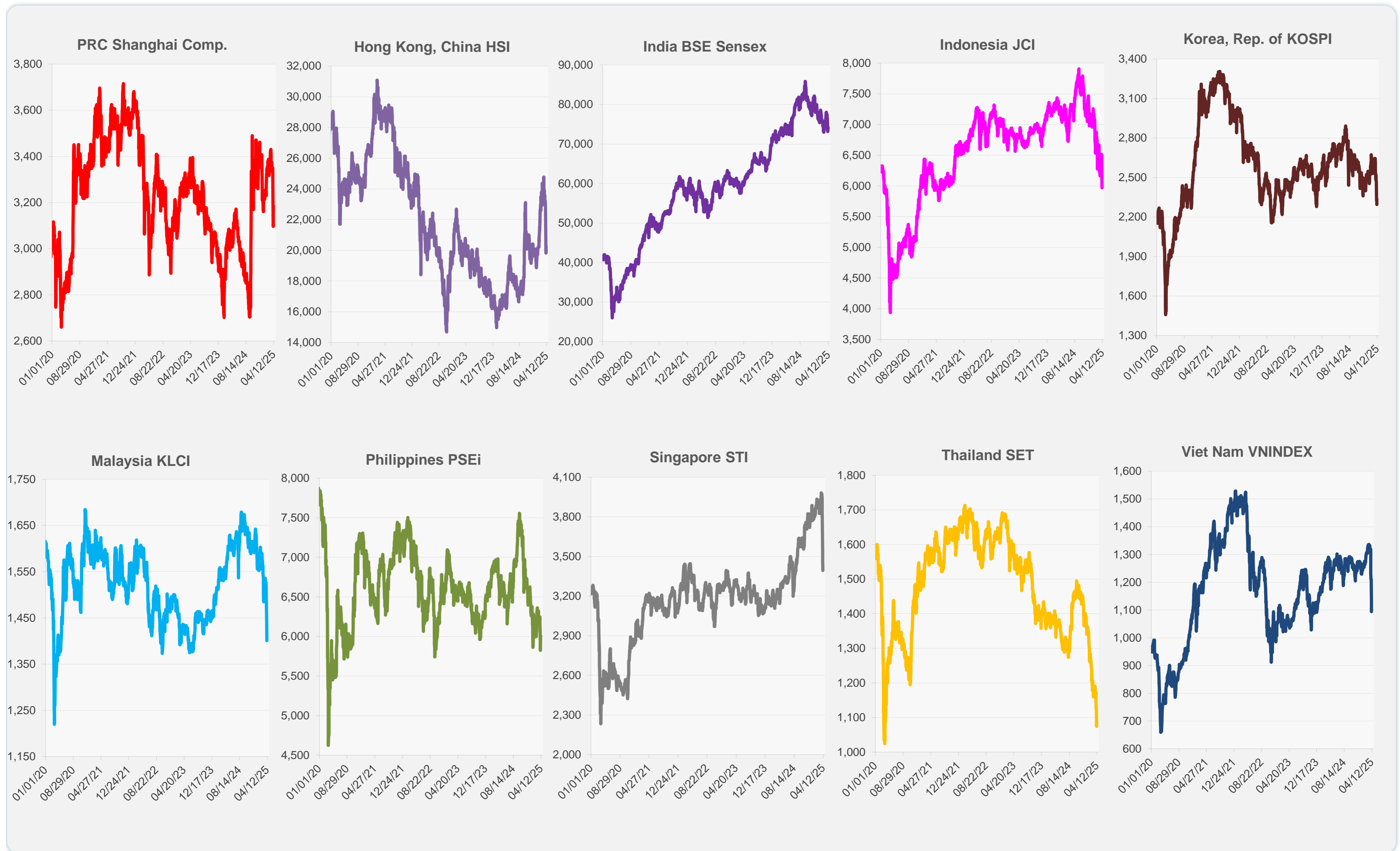
	Latest Closing	% change from Previous Day	% change from 01-Jan-25
US Dow Jones Ind Avg	40,608.45	7.87	-4.55
US NASDAQ	17,124.97	12.16	-11.32
US S&P 500	5,456.90	9.52	-7.22
UK FTSE 100	7,679.48	-2.92	-6.04
EURO STOXX 50	4,622.14	-3.17	-5.59
Japan NIKKEI 225	31,714.03	-3.93	-20.51
Bangladesh DSEX	5,196.05	0.20	-0.42
PRC Shanghai Comp.	3,186.81	1.31	-4.92
Hong Kong, China HSI	20,264.49	0.68	1.02
India BSE Sensex	73,847.15	-0.51	-5.94
Indonesia JCI	5,967.99	-0.47	-15.71
Korea, Rep. of KOSPI	2,293.70	-1.74	-4.41
Malaysia KLCI	1,400.59	-2.98	-14.72
Pakistan KSE 100	114,153.15	-1.19	-2.44
Philippines PSEi	6,006.34	0.00	-8.00
Singapore STI	3,393.69	-2.18	-10.40
Sri Lanka CSEALL	14,875.95	-1.66	-6.70
Taipei, China TWSE	17,391.76	-5.79	-24.50
Thailand SET	1,088.18	1.26	-22.28
Viet Nam VNINDEX	1,094.30	-3.40	-13.62



NIE = Newly Industrialized Economies



Sources: ADB calculations using data from CEIC Data Company and Haver Analytics.

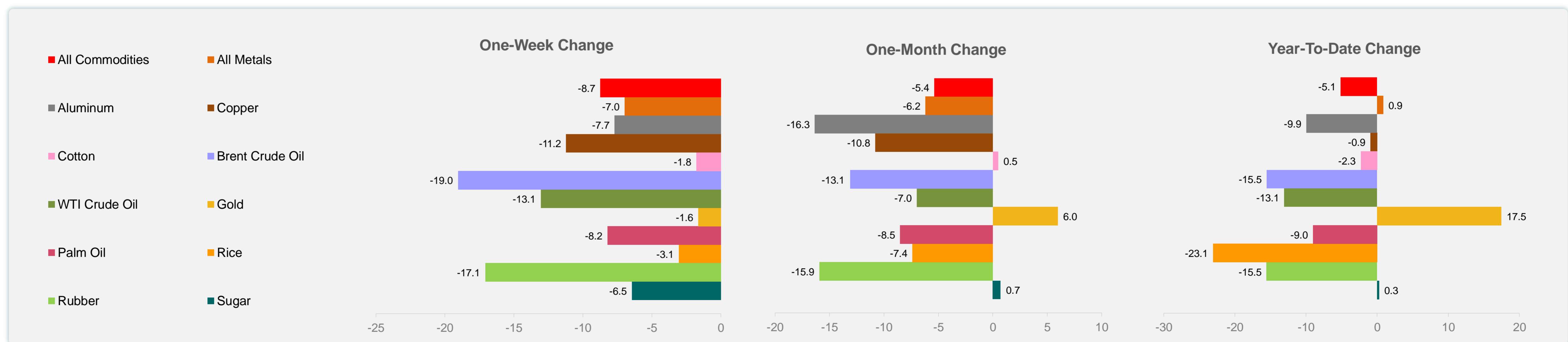
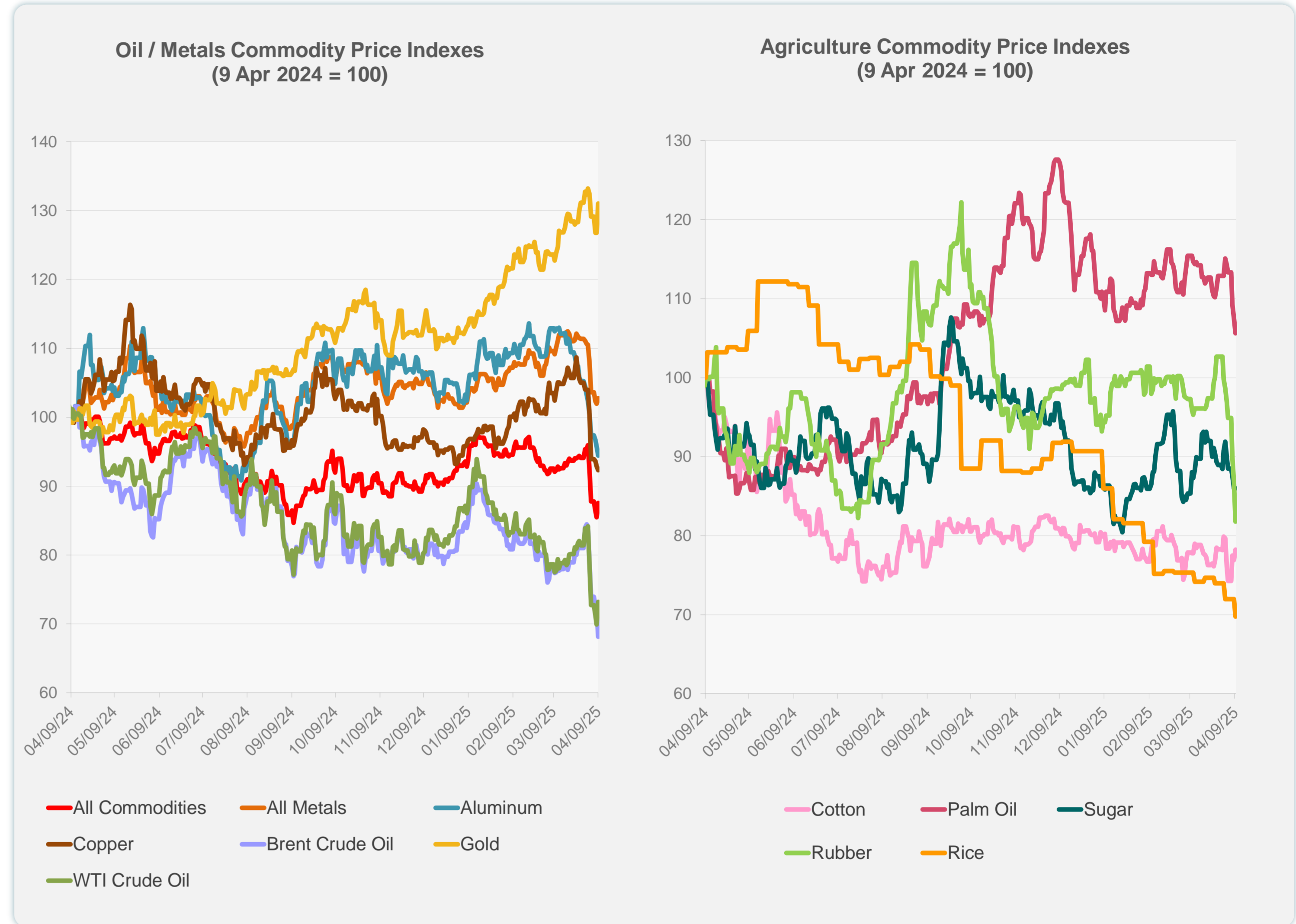


Sources: CEIC Data Company and Haver Analytics.

Daily Market Watch  
**COMMODITY PRICES**

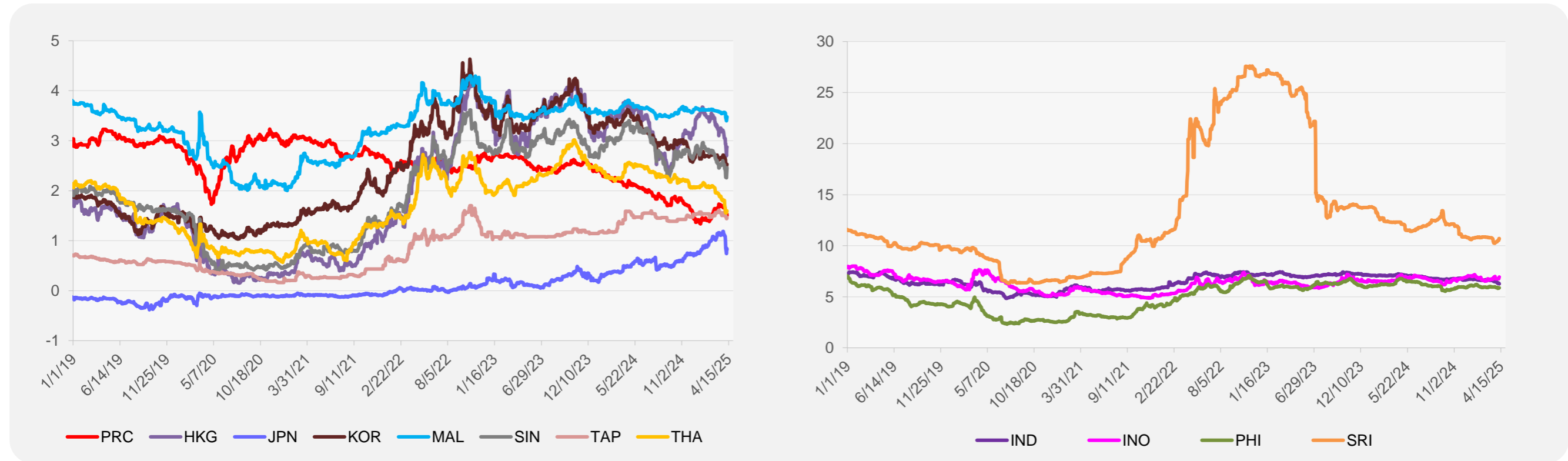
	Unit	Latest Closing	% change from Previous Day	% change from 01-Jan-25
S&P All Commodities	US\$	521.57	2.45	-5.11
S&P All Metals	US\$	310.00	0.79	0.85
Aluminum	US\$/metric ton	2,275.46	-1.34	-9.95
Copper	US\$/metric ton	8,571.37	-0.58	-0.94
Cotton	US cents/lb	64.38	1.71	-2.31
Brent Crude Oil	US\$/barrel	62.60	-5.37	-15.53
WTI Crude Oil	US\$/barrel	62.35	4.65	-13.06
Gold	US\$/troy oz	3,082.70	3.33	17.46
Palm Oil	US\$/metric tonne	1,000.89	-1.77	-9.02
Rice <sup>1</sup>	US\$/metric ton	413.00	-3.05	-23.09
Rubber <sup>2</sup>	US\$/kg	200.00	-5.62	-15.54
Sugar	US cents/lb	18.25	0.00	0.27

<sup>1</sup> Latest closing price from 9 April 2025.  
<sup>2</sup> Singapore Exchange, Ribbed Smoked Sheet Rubber.

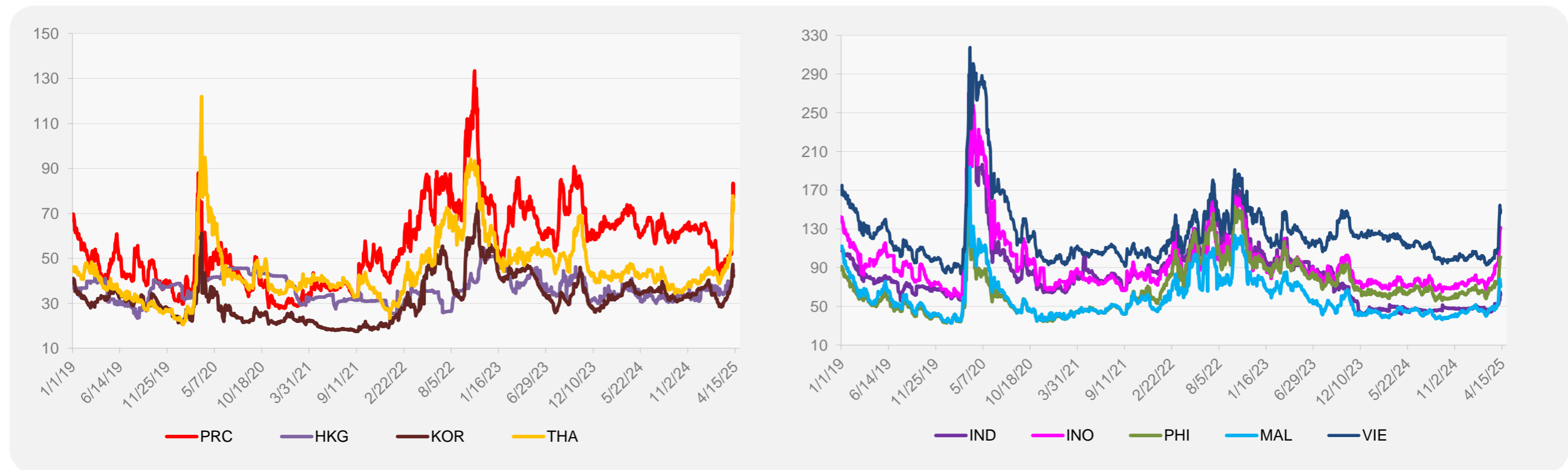


Source: ADB calculations using data from Bloomberg.

### 5-YEAR LOCAL CURRENCY GOVERNMENT BOND YIELDS (%)



### 5-YEAR CREDIT DEFAULT SWAP<sup>1</sup>



<sup>1</sup> In USD and based on sovereign bonds.  
Source: ADB calculations using data from Bloomberg.