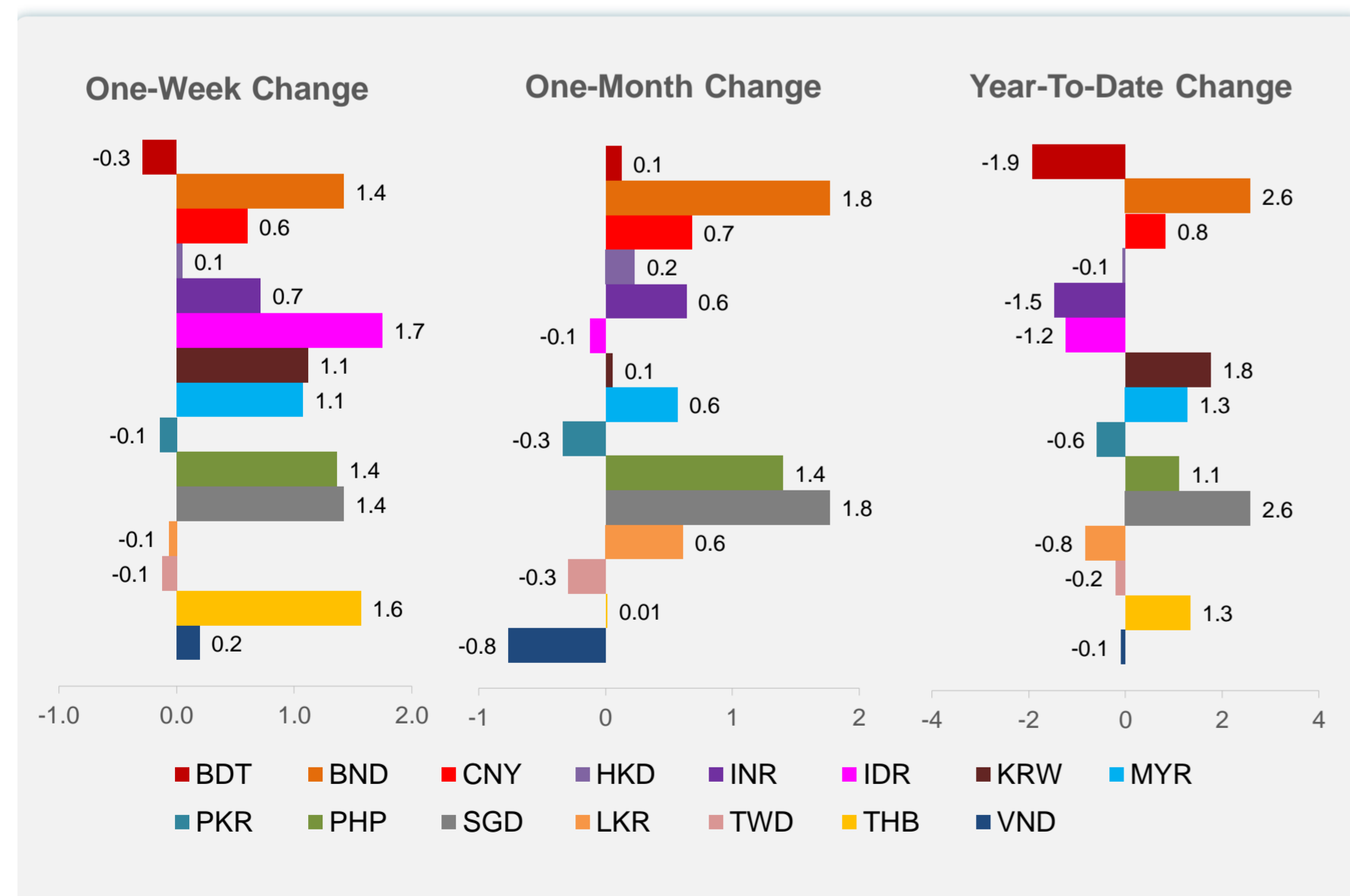
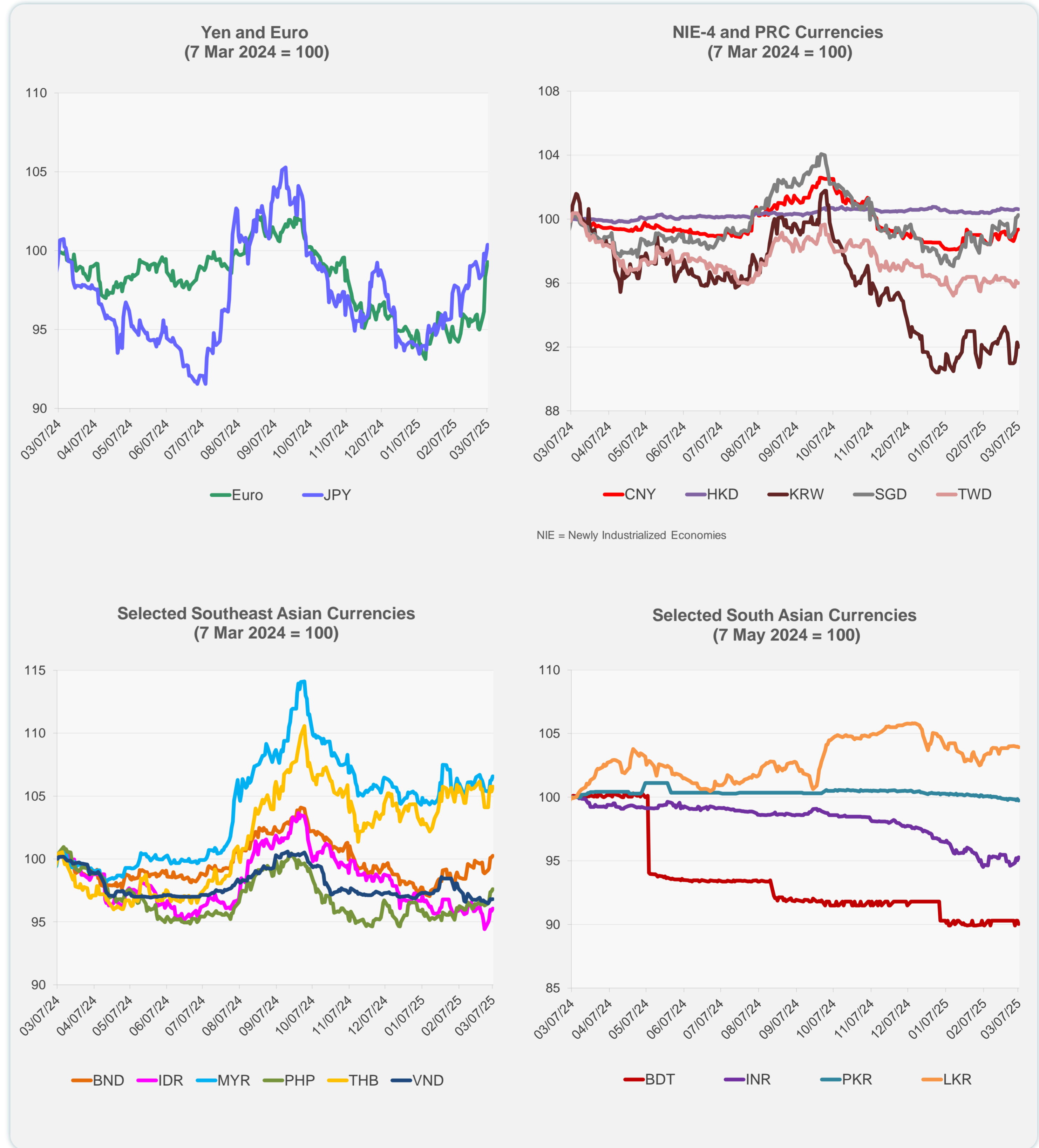
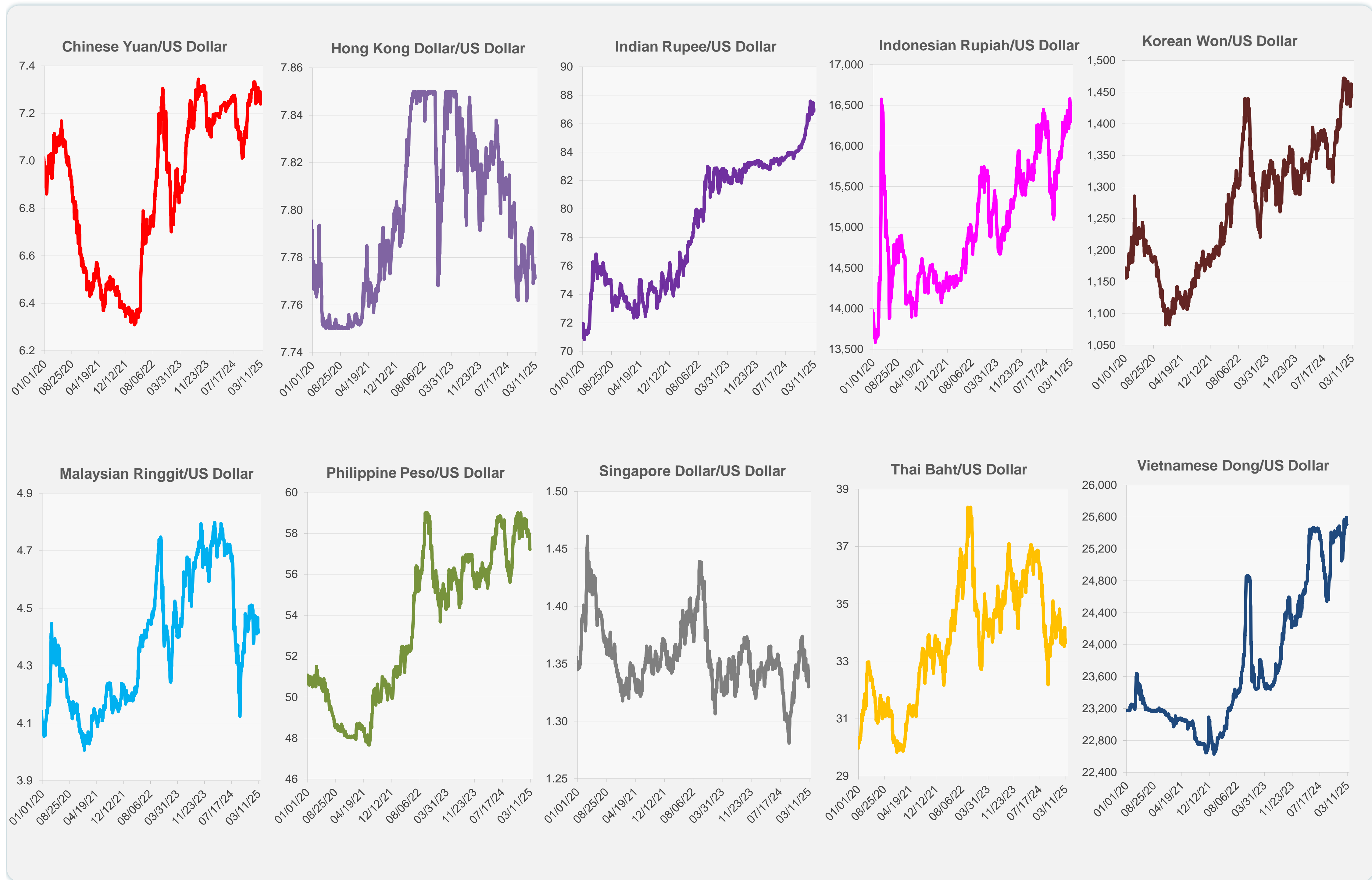


	Latest Closing	% change from Previous Day	% change from 01-Jan-25
Euro	0.92	0.48	4.97
Japanese yen (JPY)	147.49	0.50	6.56
Bangladeshi taka (BDT)	121.85	-0.29	-1.93
Brunei dollar (BND)	1.33	0.13	2.58
Chinese yuan (CNY)	7.24	0.05	0.82
Hong Kong dollar (HKD)	7.77	-0.02	-0.06
Indian rupee (INR)	86.88	0.27	-1.46
Indonesian rupiah (IDR)	16,295.00	0.21	-1.23
Korean won (KRW)	1,446.75	-0.31	1.76
Malaysian ringgit (MYR)	4.42	0.28	1.28
Pakistan rupee (PKR)	280.00	-0.12	-0.58
Philippine peso (PHP)	57.21	0.17	1.11
Singapore dollar (SGD)	1.33	0.13	2.58
Sri Lanka rupee (LKR)	295.45	-0.05	-0.83
Taipei,China NT dollar (TWD)	32.85	0.02	-0.21
Thai baht (THB)	33.65	0.37	1.33
Vietnamese dong (VND)	25,505.00	0.02	-0.08



Note: Negative/Decreasing values indicate depreciation of local currency, and positive/increasing values indicate appreciation.  
Source: ADB calculations using data from Haver Analytics.

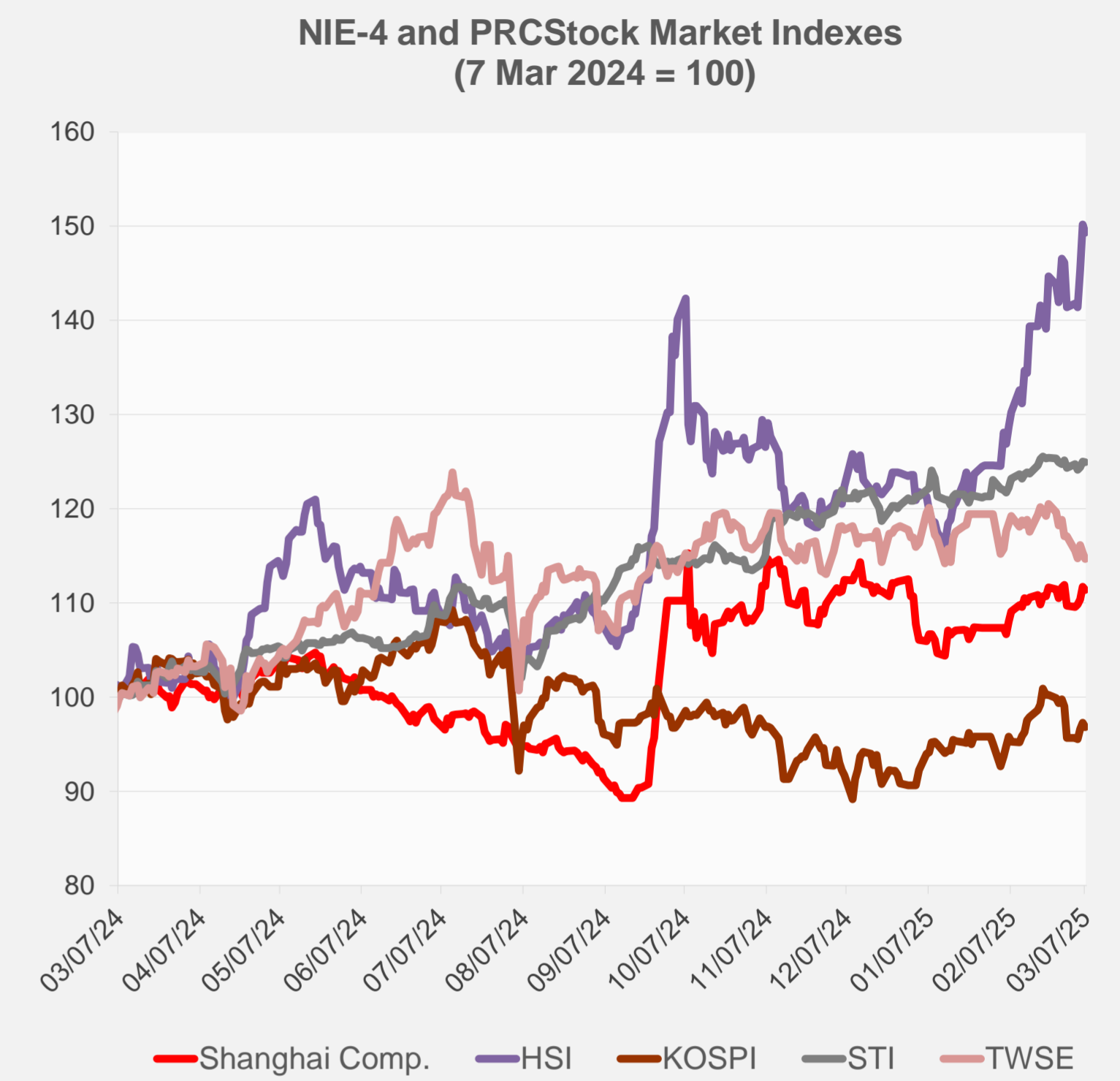


Source: Haver Analytics.

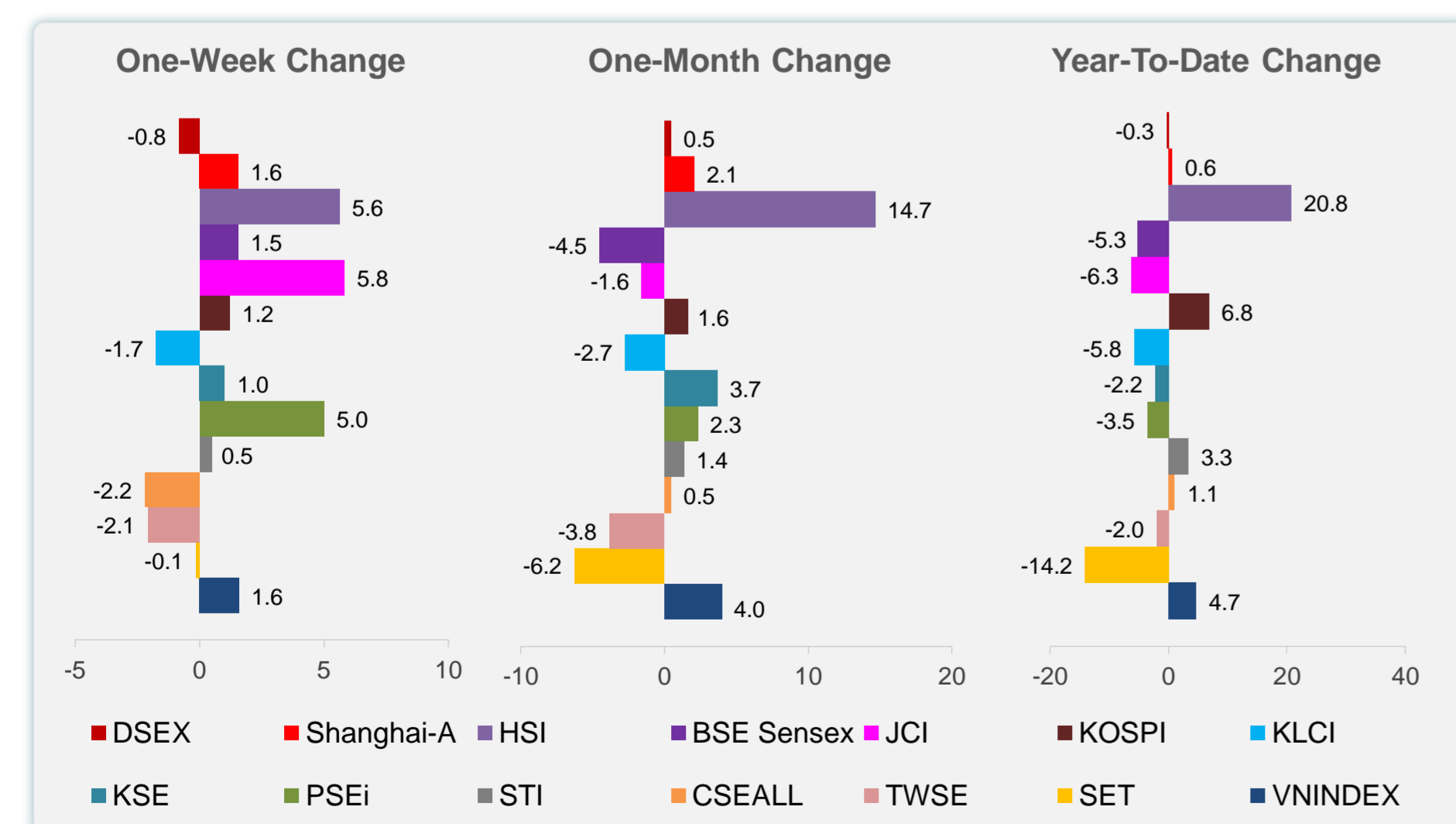
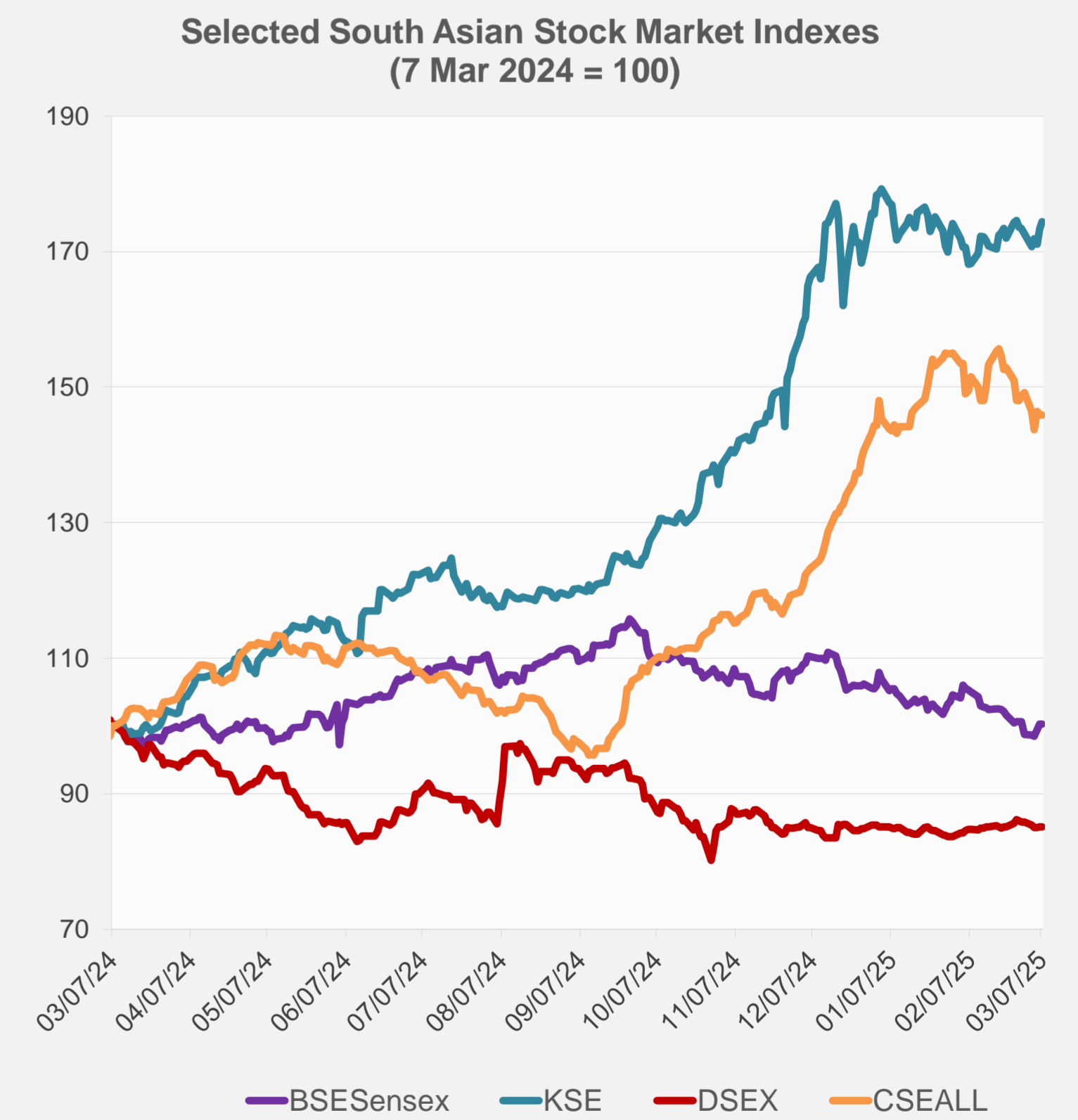
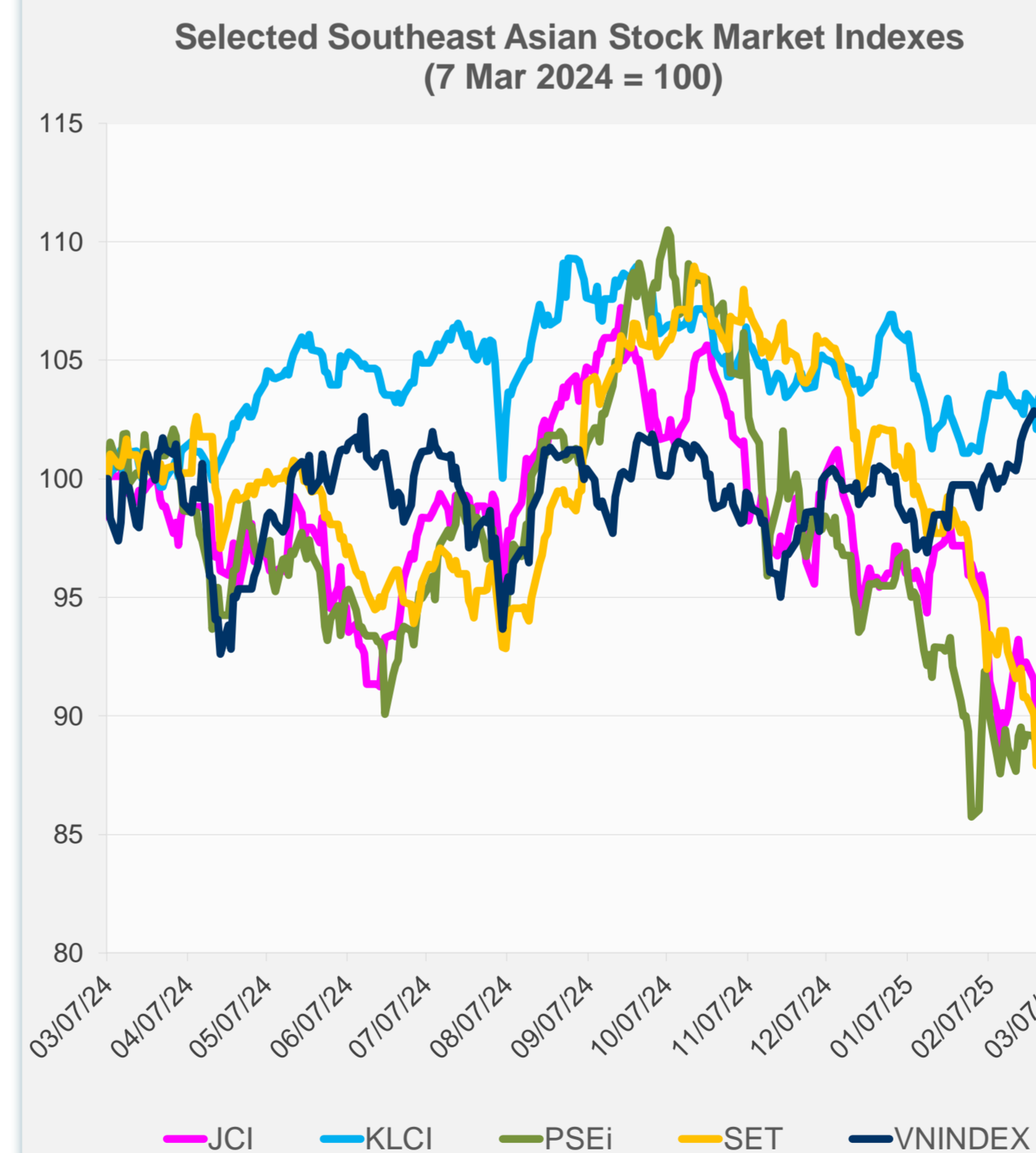
# Daily Market Watch STOCK INDEXES

10 March 2025, 9:00 AM Manila

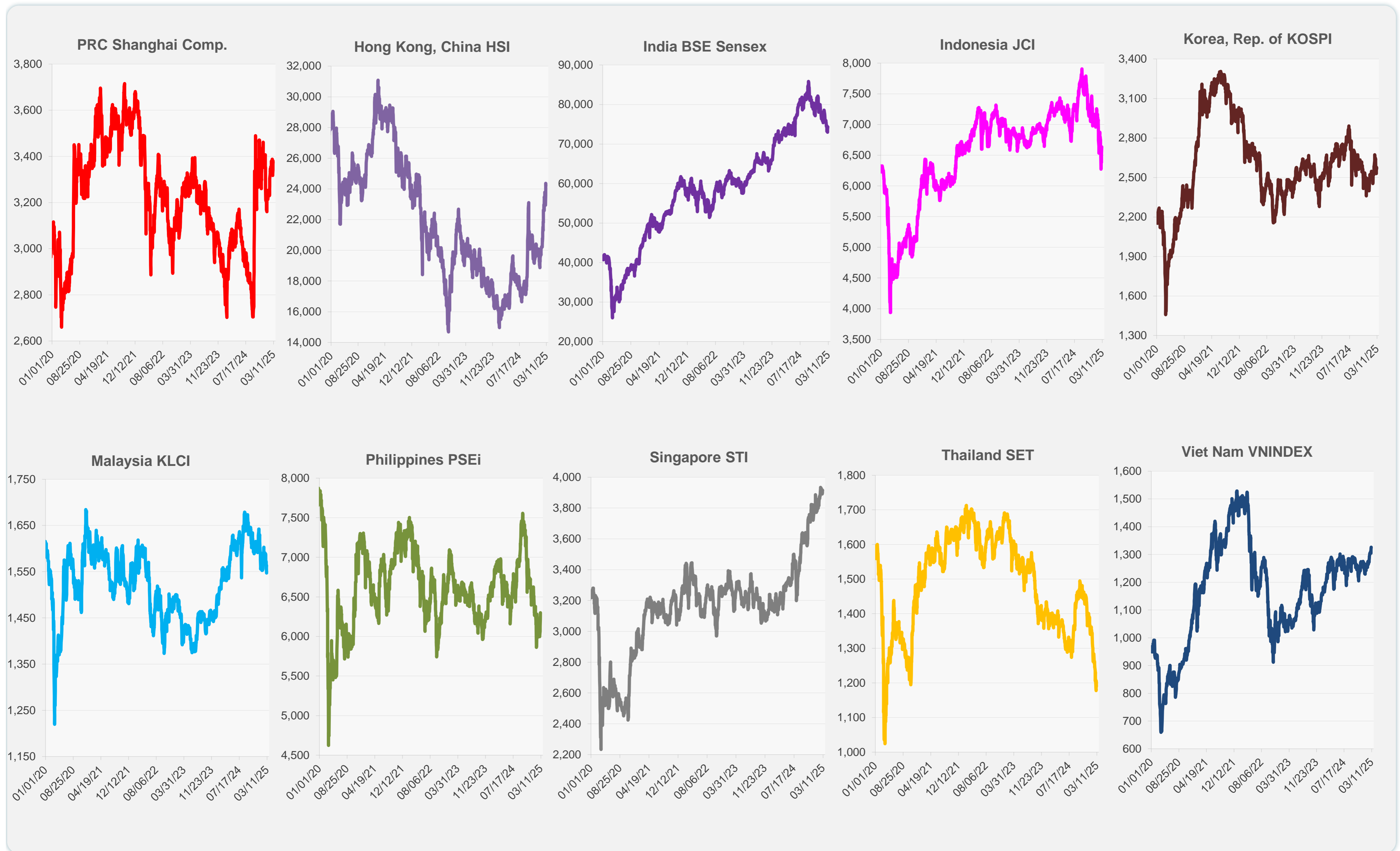
	Latest Closing	% change from Previous Day	% change from 01-Jan-25
US Dow Jones Ind Avg	42,801.72	0.52	0.61
US NASDAQ	18,196.22	0.70	-5.77
US S&P 500	5,770.20	0.55	-1.89
UK FTSE 100	8,679.88	-0.03	6.20
EURO STOXX 50	5,468.41	-0.94	11.69
Japan NIKKEI 225	36,887.17	-2.17	-7.54
Bangladesh DSEX	5,203.96	0.00	-0.27
PRC Shanghai Comp.	3,372.55	-0.25	0.62
Hong Kong, China HSI	24,231.30	-0.57	20.79
India BSE Sensex	74,332.58	-0.01	-5.32
Indonesia JCI	6,636.00	0.27	-6.27
Korea, Rep. of KOSPI	2,563.48	-0.49	6.83
Malaysia KLCI	1,547.27	-0.75	-5.79
Pakistan KSE 100	114,398.69	0.60	-2.23
Philippines PSEi	6,298.29	1.26	-3.53
Singapore STI	3,914.48	-0.07	3.35
Sri Lanka CSEALL	16,115.47	-0.05	1.07
Taipei, China TWSE	22,576.07	-0.61	-1.99
Thailand SET	1,202.03	1.05	-14.15
Viet Nam VNINDEX	1,326.05	0.59	4.68



NIE = Newly Industrialized Economies



Sources: ADB calculations using data from CEIC Data Company and Haver Analytics.



Sources: CEIC Data Company and Haver Analytics.

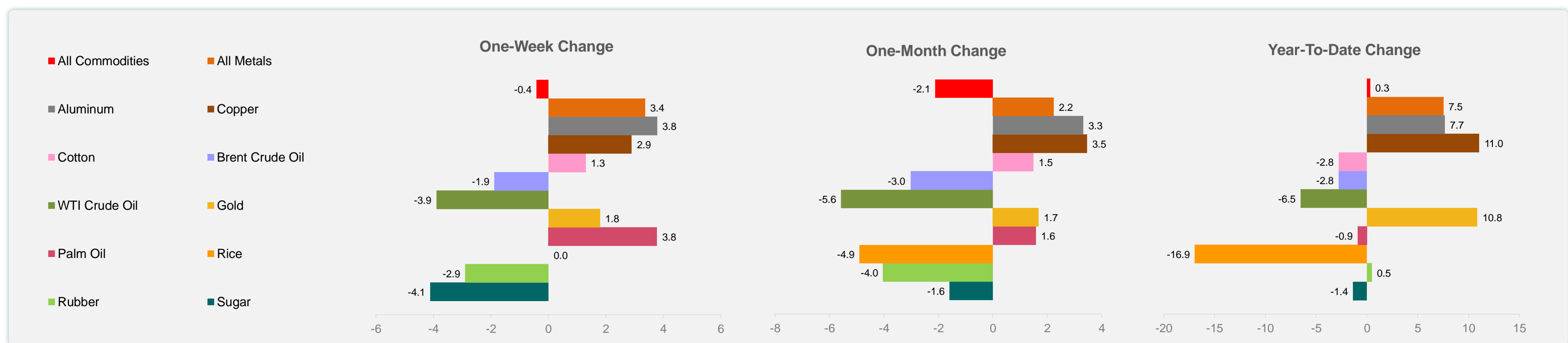
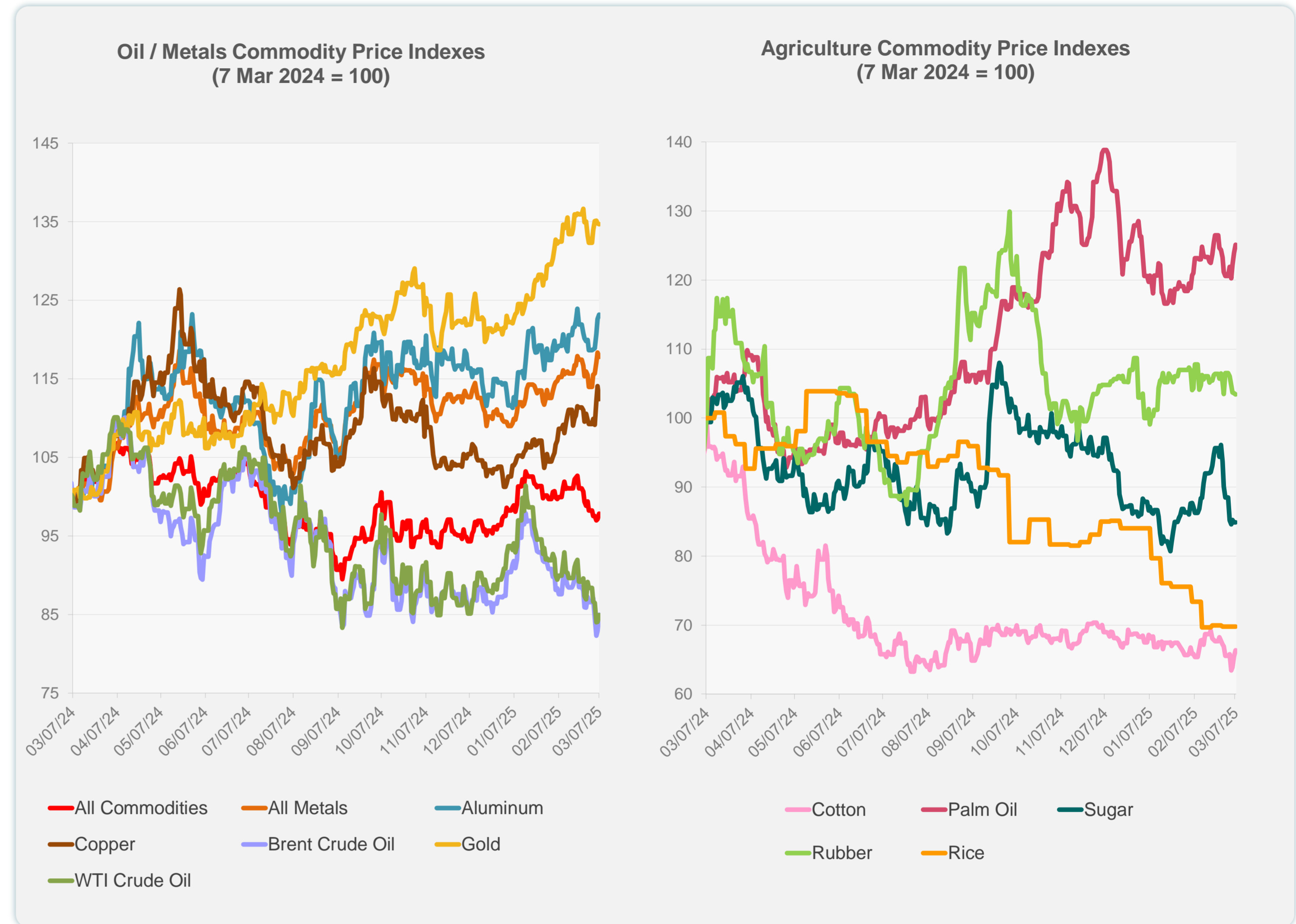
Daily Market Watch  
**COMMODITY PRICES**

10 March 2025, 9:00 AM Manila

	Unit	Latest Closing	% change from Previous Day	% change from 01-Jan-25
S&P All Commodities	US\$	551.31	0.69	0.30
S&P All Metals	US\$	330.51	-0.47	7.52
Aluminum	US\$/metric ton	2,720.21	0.44	7.66
Copper	US\$/metric ton	9,608.63	-1.43	11.05
Cotton	US cents/lb	64.07	1.36	-2.78
Brent Crude Oil	US\$/barrel	72.05	2.50	-2.78
WTI Crude Oil	US\$/barrel	67.04	1.02	-6.53
Gold	US\$/troy oz	2,909.10	-0.09	10.84
Palm Oil	US\$/metric tonne	1,090.10	1.00	-0.91
Rice <sup>1</sup>	US\$/metric ton	446.00	0.00	-16.95
Rubber <sup>2</sup>	US\$/kg	237.90	-0.17	0.46
Sugar	US cents/lb	17.95	0.00	-1.37

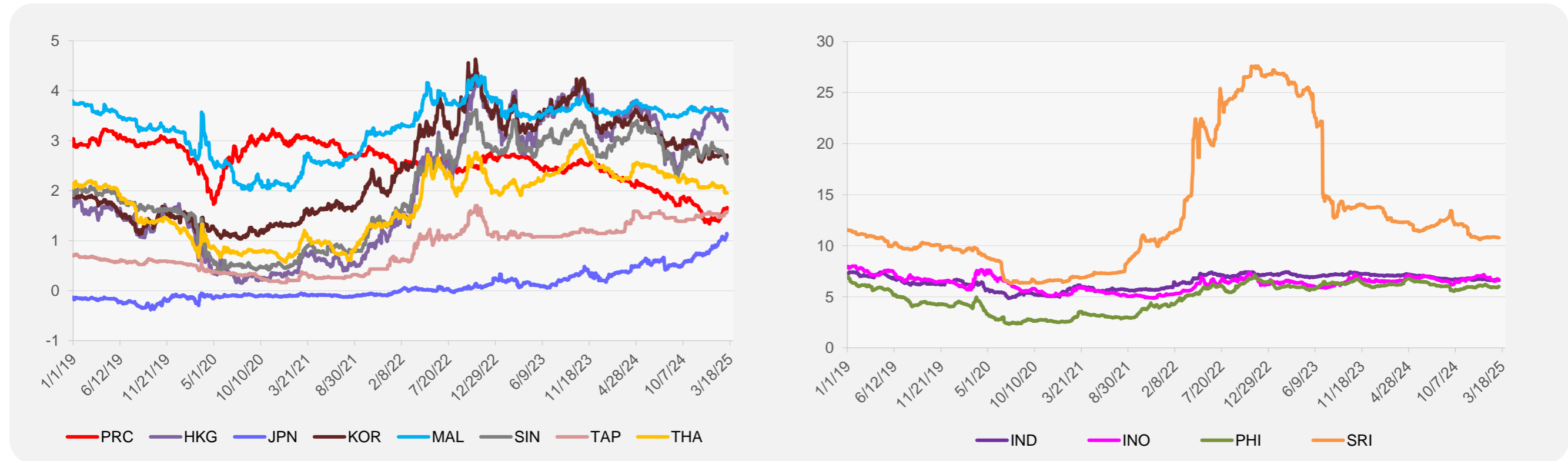
<sup>1</sup> Latest closing price from 26 February 2025.

<sup>2</sup> Singapore Exchange, Ribbed Smoked Sheet Rubber.

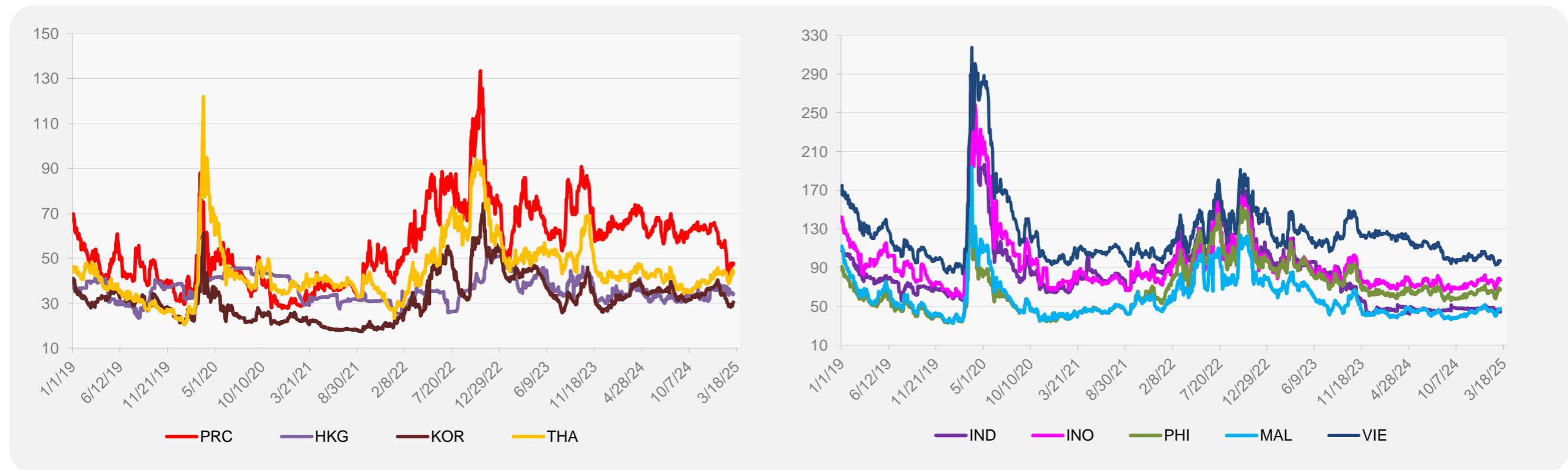


Source: ADB calculations using data from Bloomberg.

### 5-YEAR LOCAL CURRENCY GOVERNMENT BOND YIELDS (%)



### 5-YEAR CREDIT DEFAULT SWAP<sup>1</sup>



<sup>1</sup> In USD and based on sovereign bonds.  
Source: ADB calculations using data from Bloomberg.