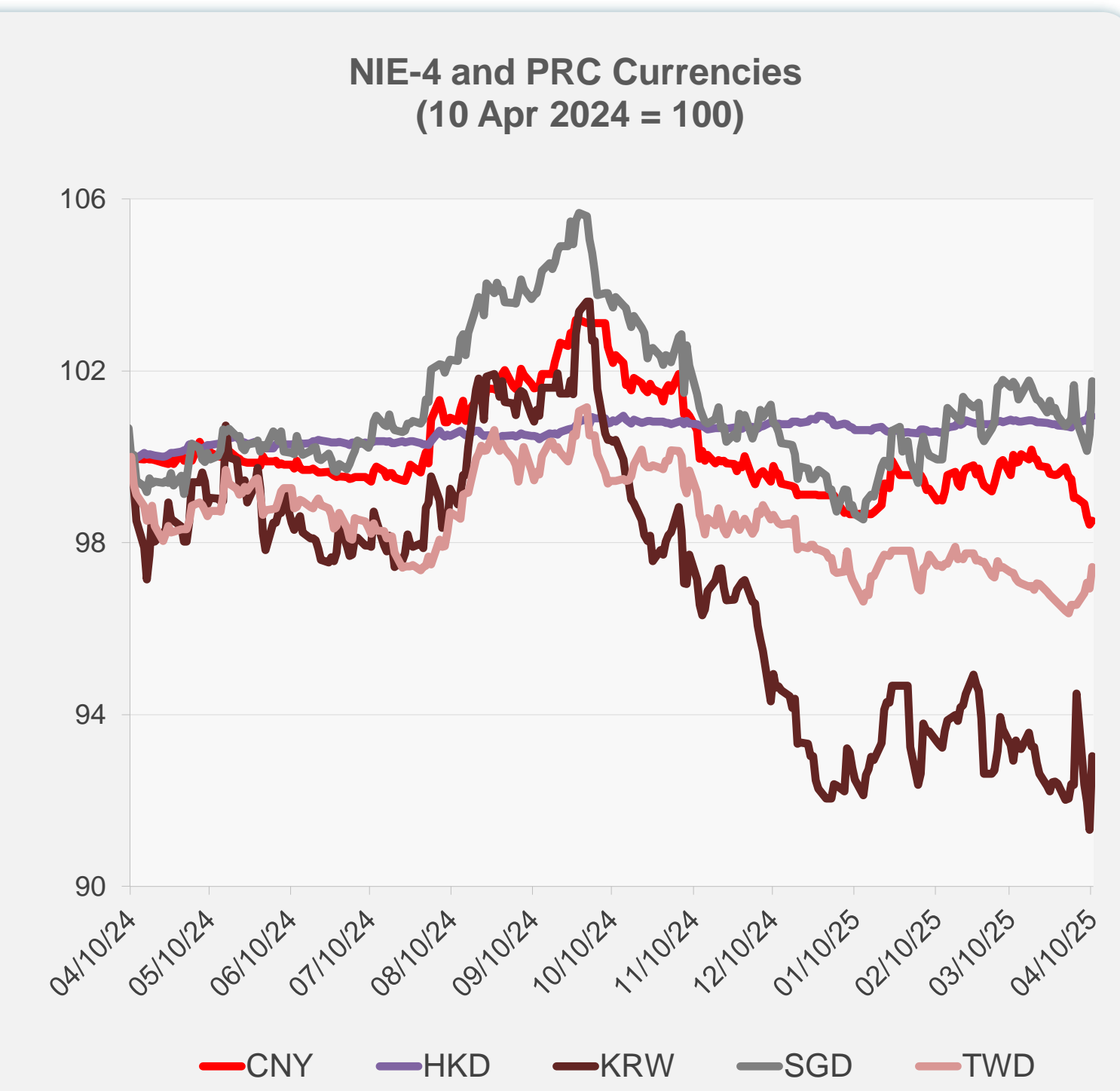
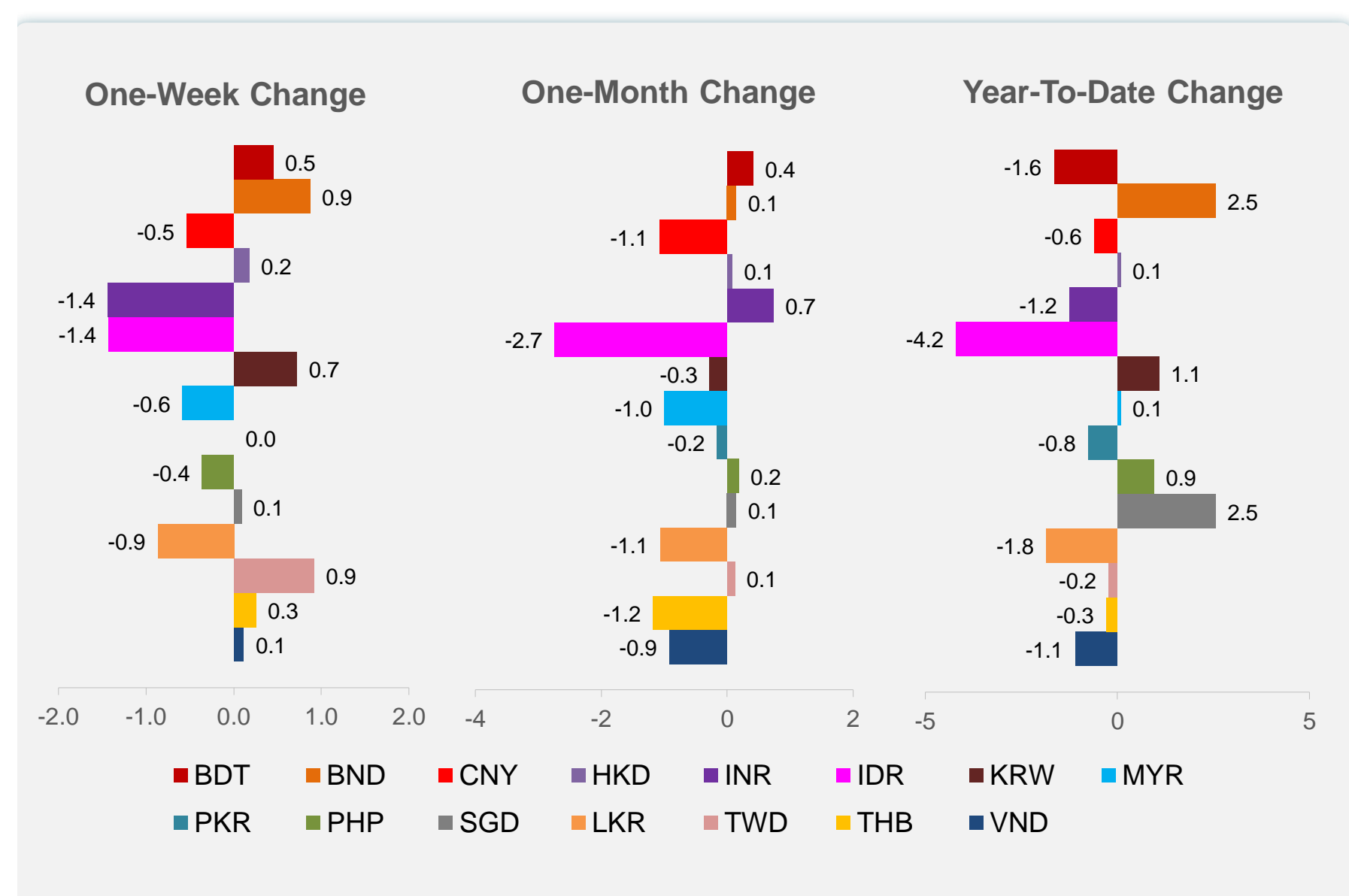
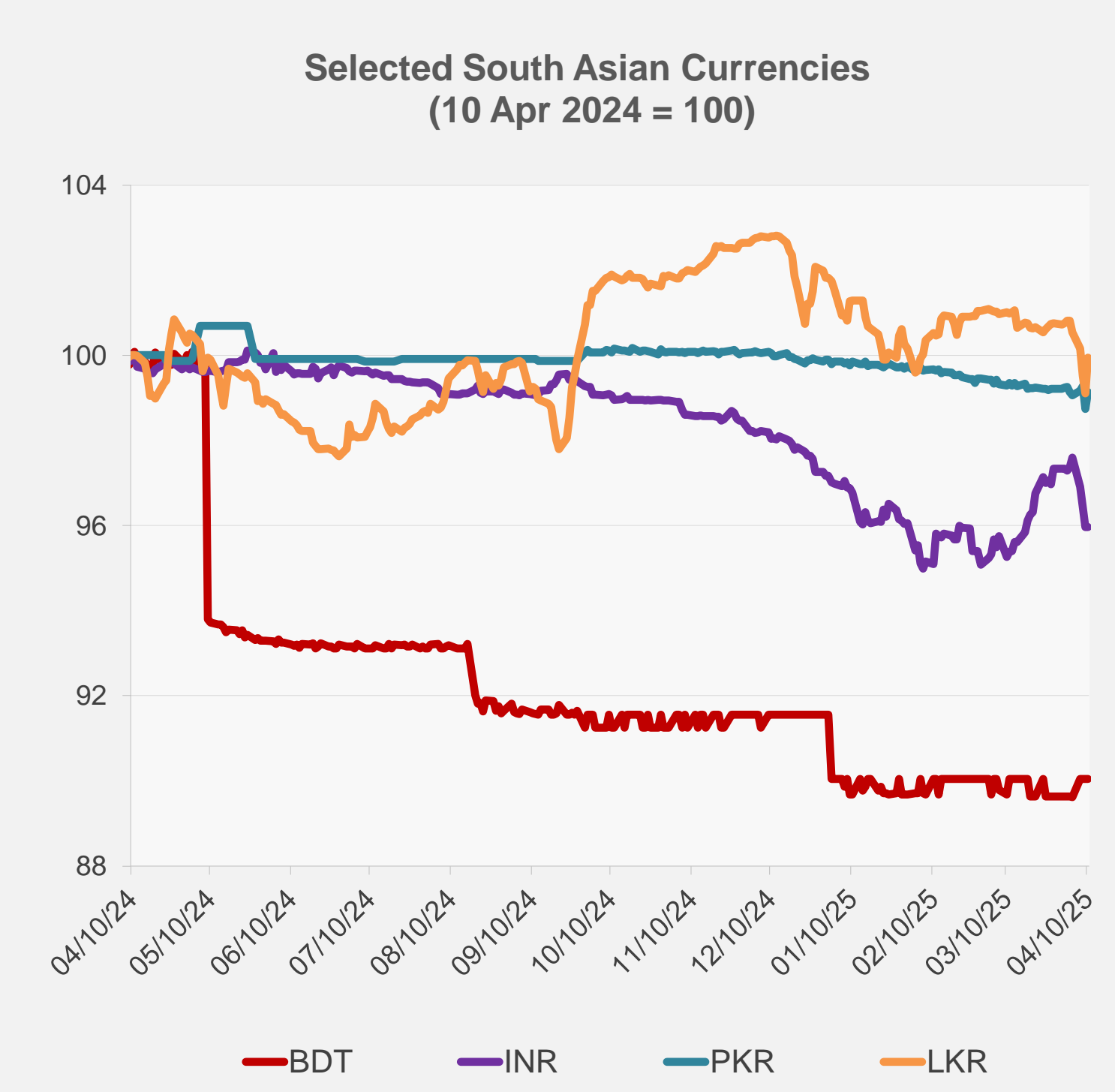
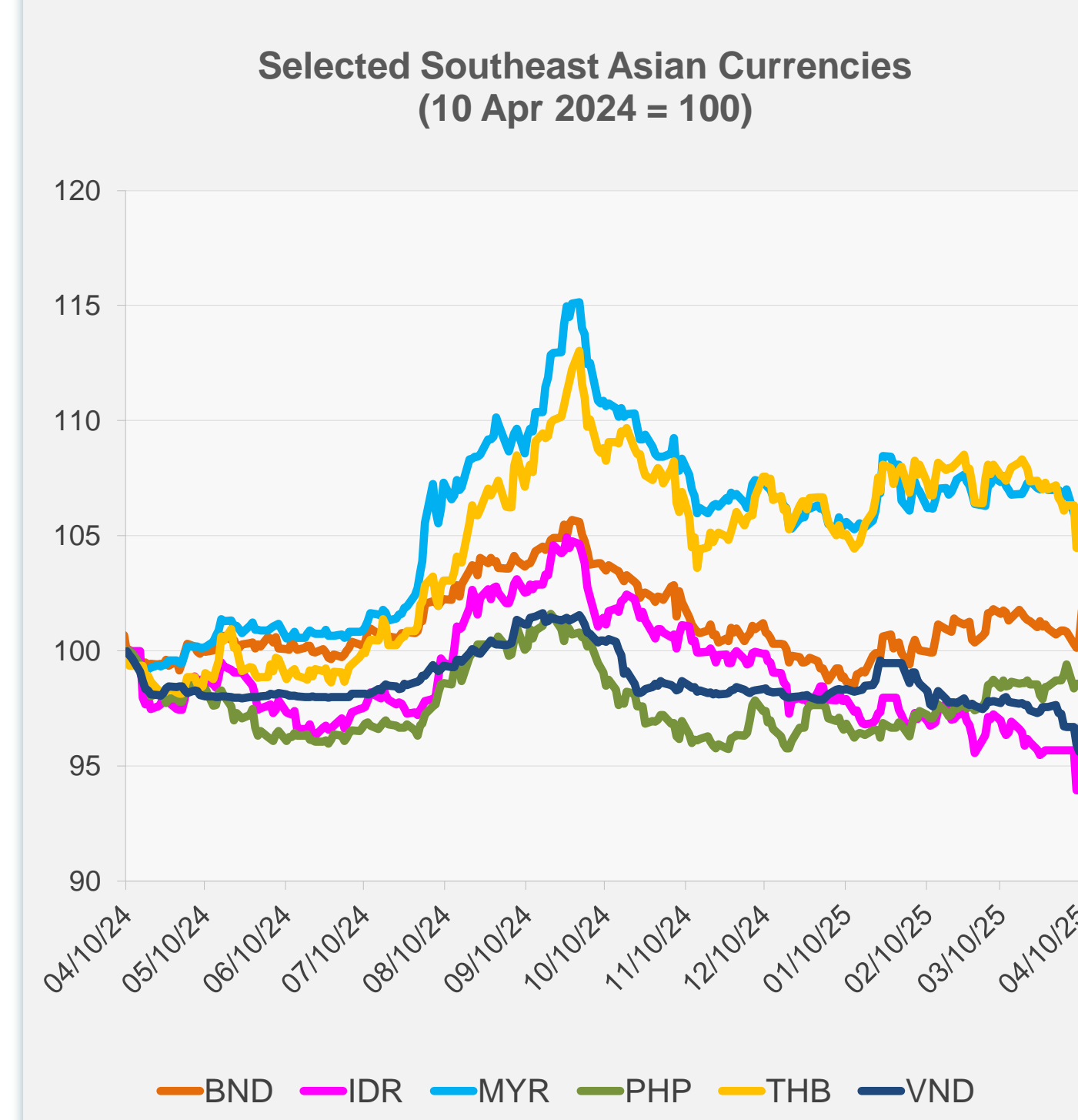


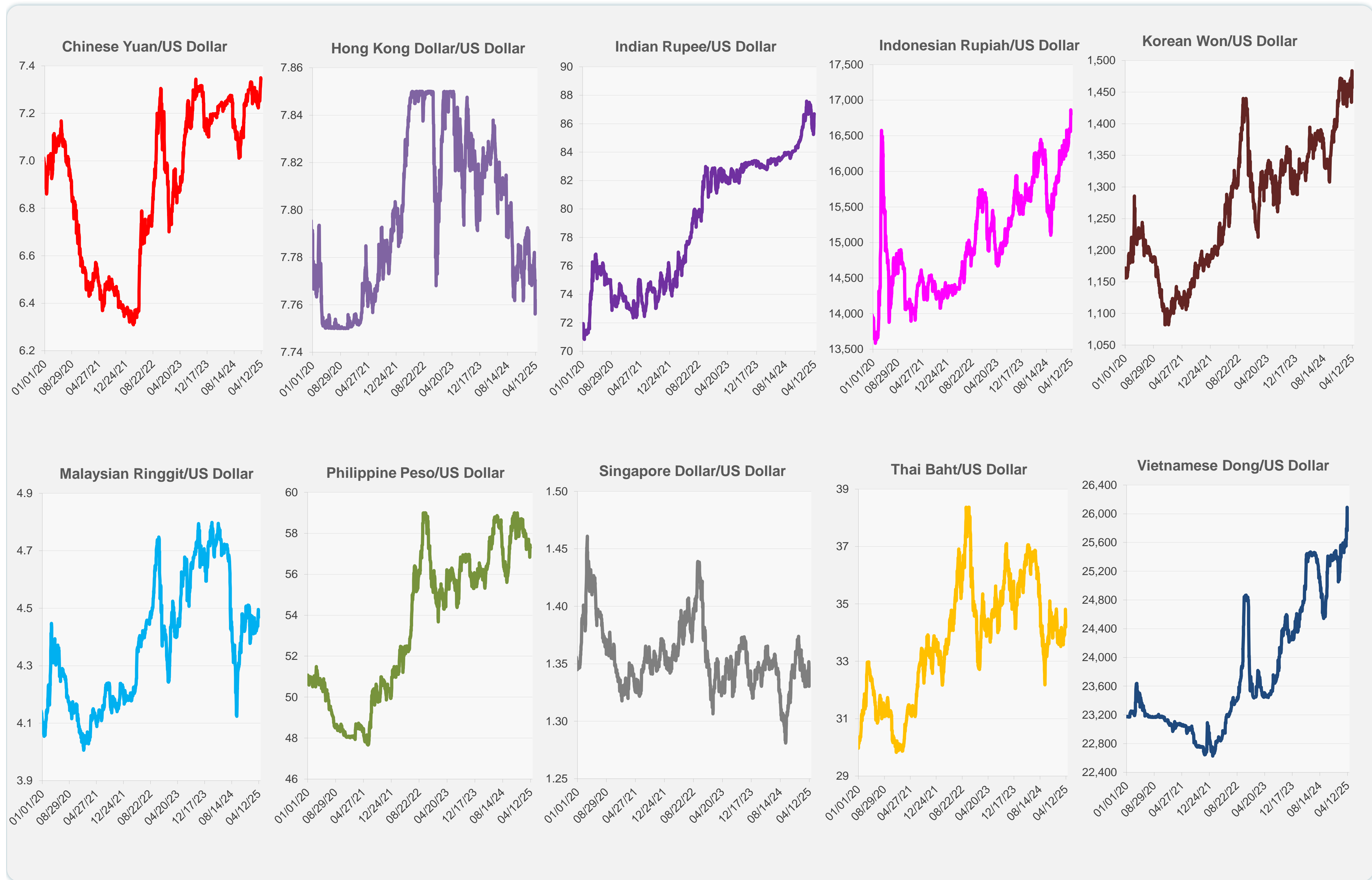
	Latest Closing	% change from Previous Day	% change from 01-Jan-25
Euro	0.89	1.29	7.97
Japanese yen (JPY)	144.62	0.10	8.67
Bangladeshi taka (BDT)	121.50	0.00	-1.65
Brunei dollar (BND)	1.33	1.25	2.55
Chinese yuan (CNY)	7.34	0.09	-0.60
Hong Kong dollar (HKD)	7.76	-0.08	0.08
Indian rupee (INR)	86.70	0.00	-1.25
Indonesian rupiah (IDR)	16,800.00	0.39	-4.20
Korean won (KRW)	1,456.50	1.88	1.07
Malaysian ringgit (MYR)	4.47	0.63	0.08
Pakistan rupee (PKR)	280.50	0.40	-0.76
Philippine peso (PHP)	57.31	0.01	0.94
Singapore dollar (SGD)	1.33	1.25	2.55
Sri Lanka rupee (LKR)	298.50	0.84	-1.84
Taipei,China NT dollar (TWD)	32.86	0.51	-0.22
Thai baht (THB)	34.19	1.08	-0.29
Vietnamese dong (VND)	25,765.00	1.26	-1.09



NIE = Newly Industrialized Economies

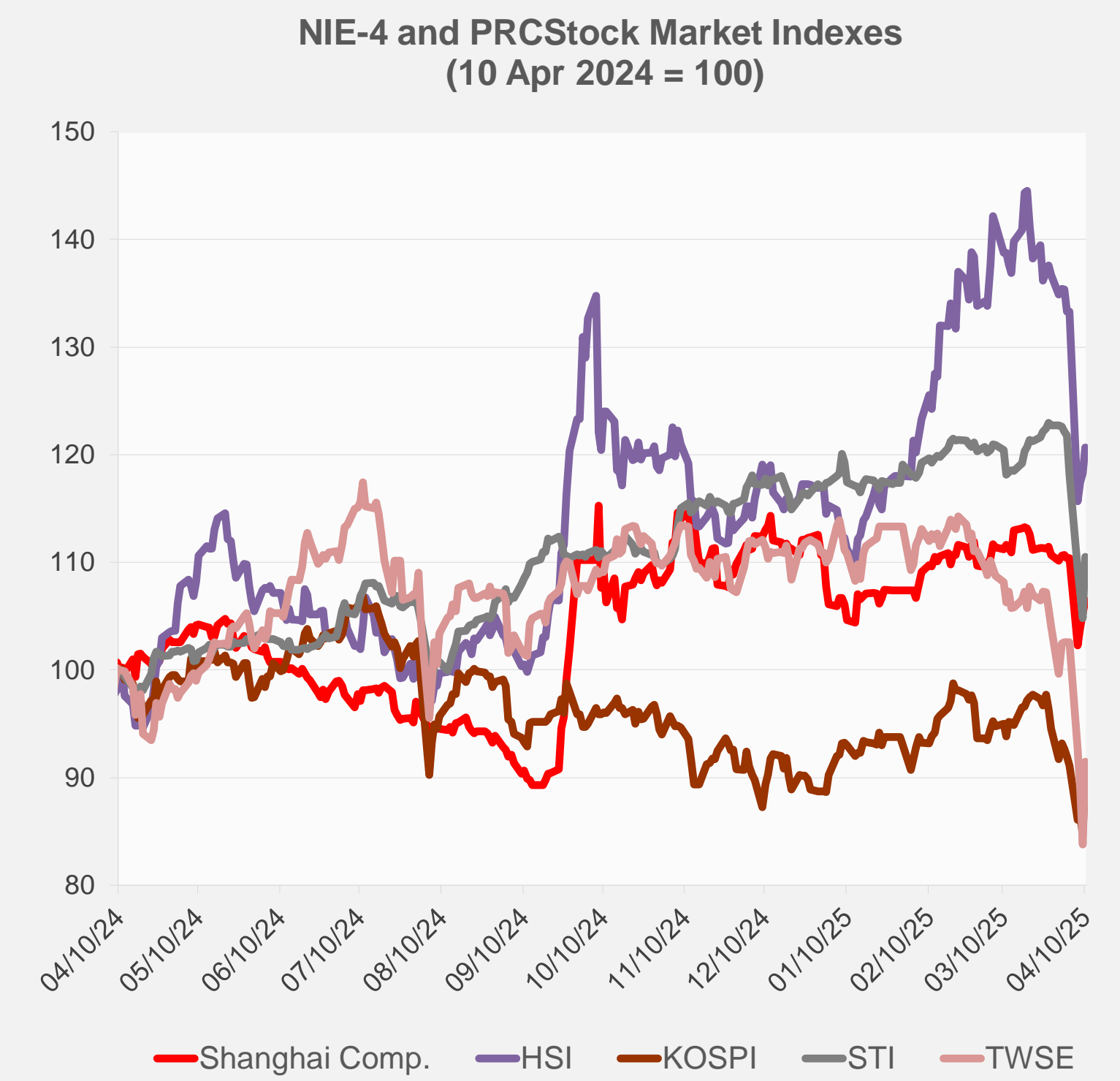


Note: Negative/Decreasing values indicate depreciation of local currency, and positive/increasing values indicate appreciation.
Source: ADB calculations using data from Haver Analytics.

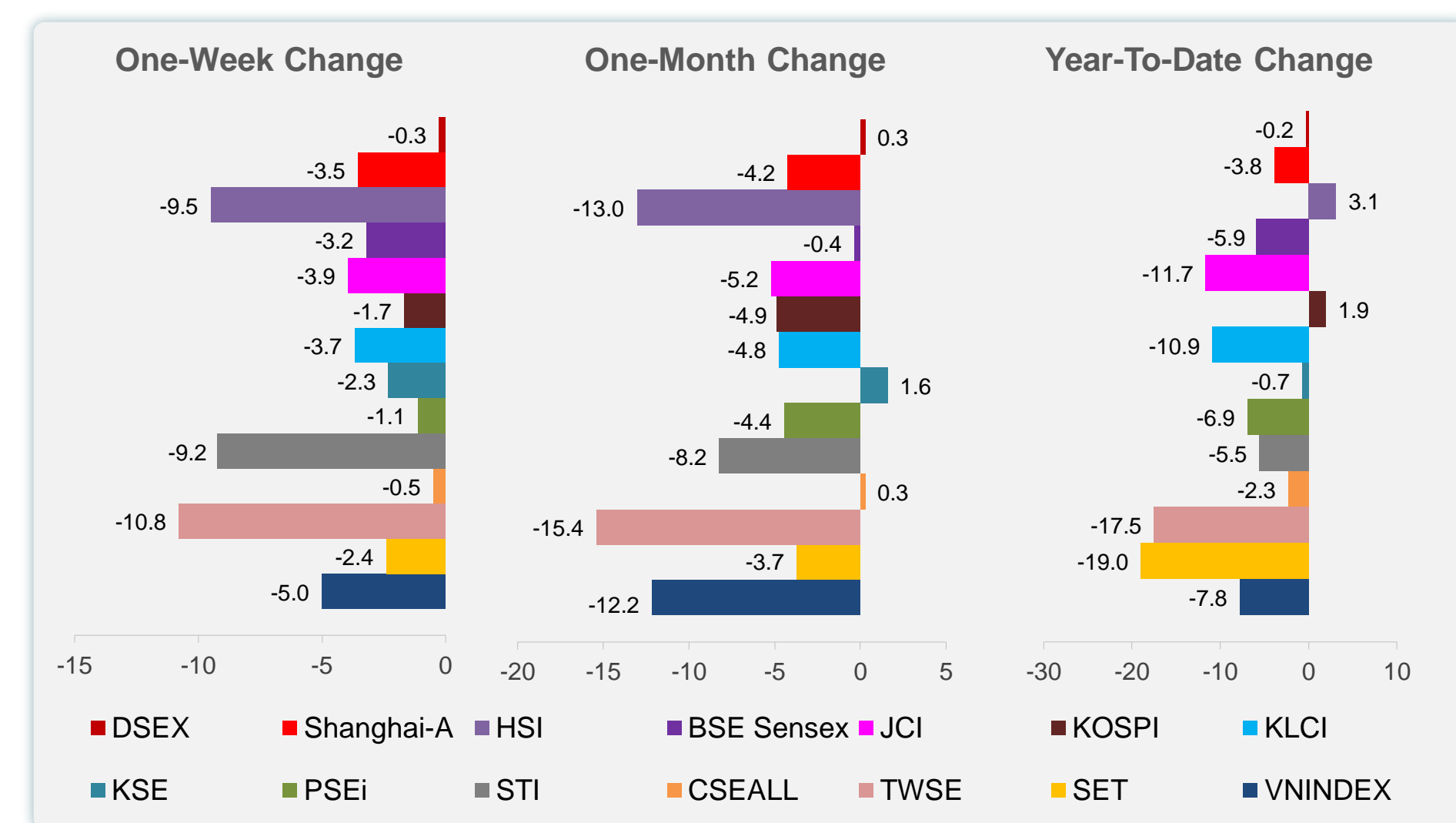
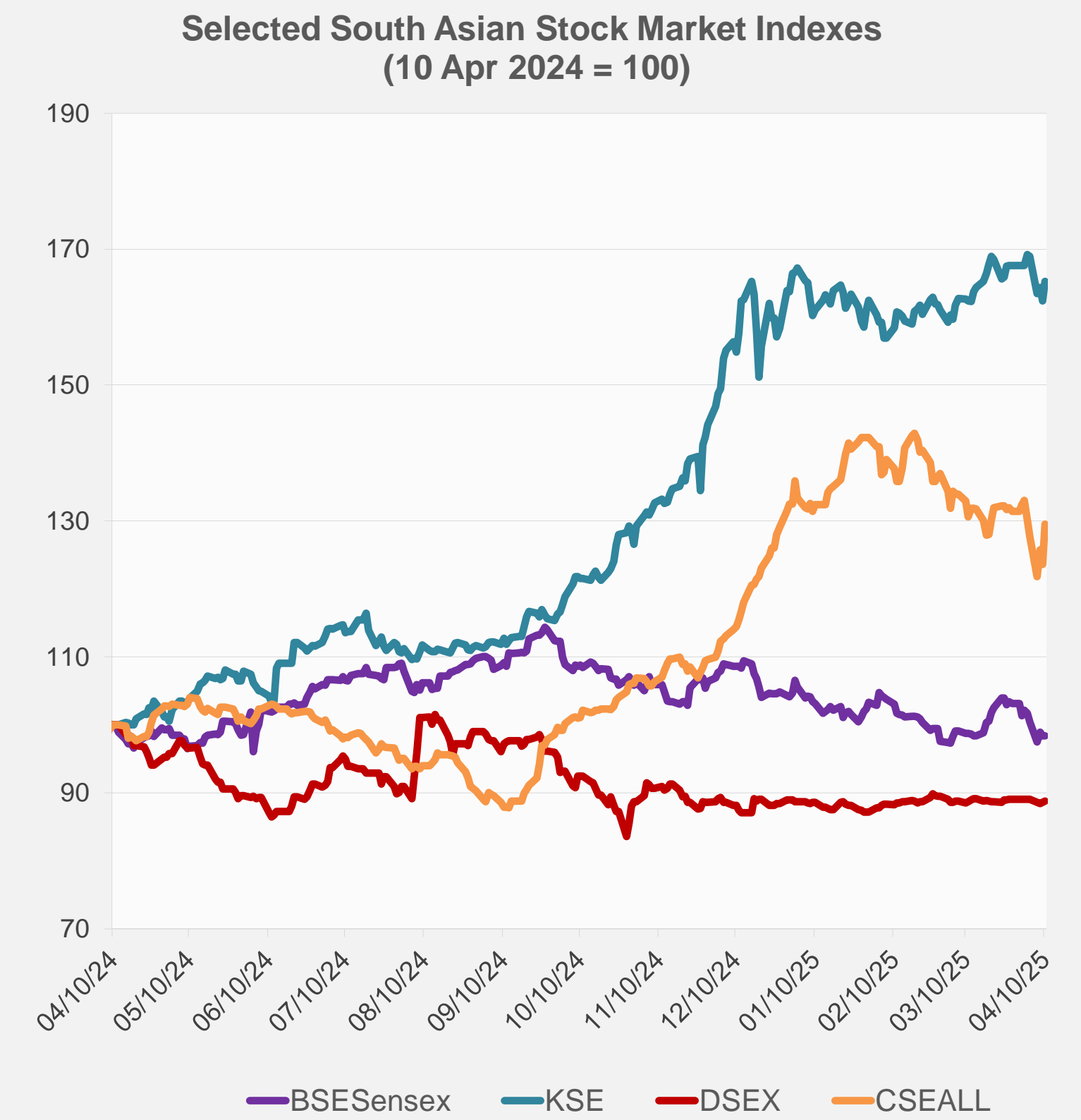
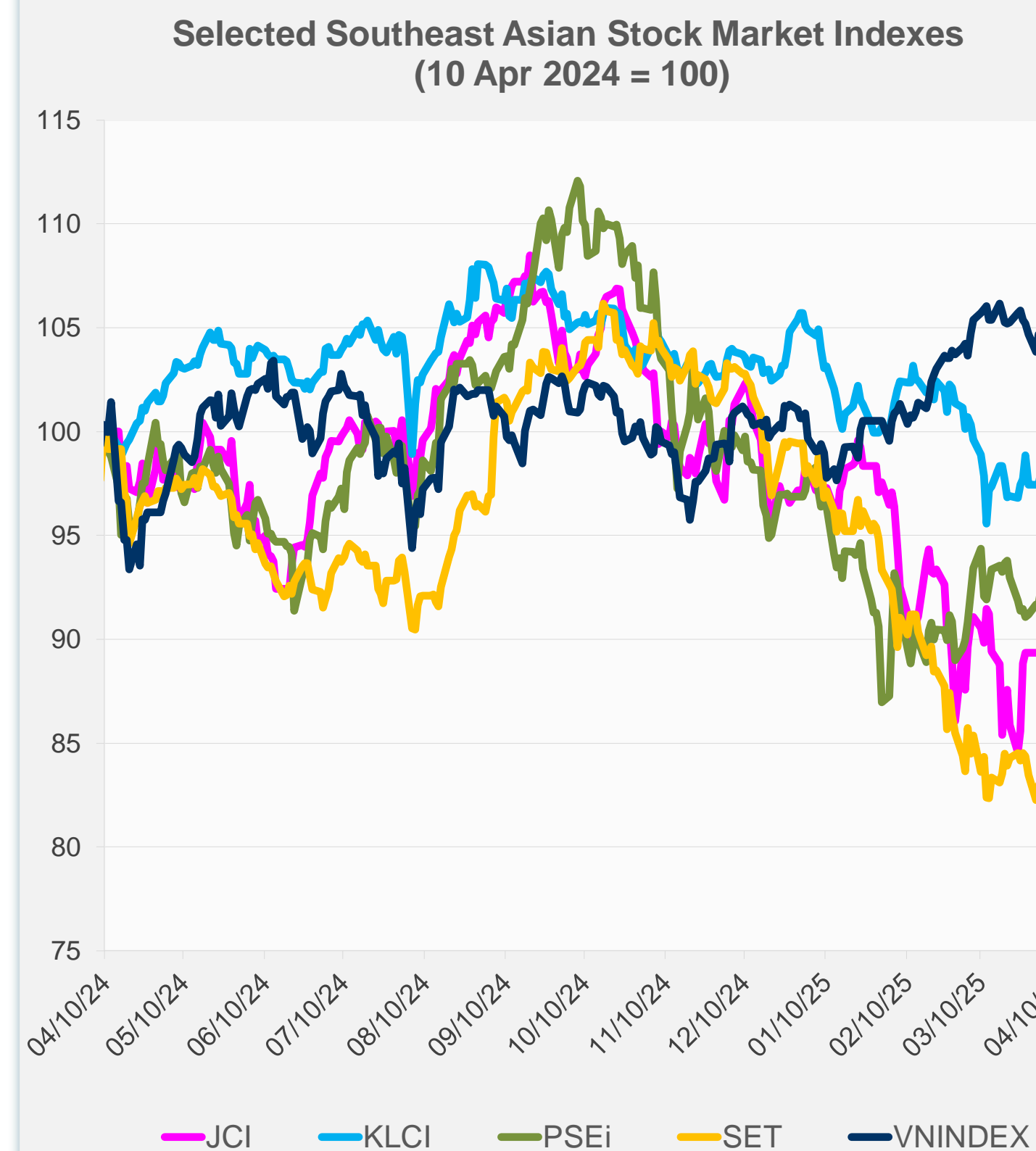


Source: Haver Analytics.

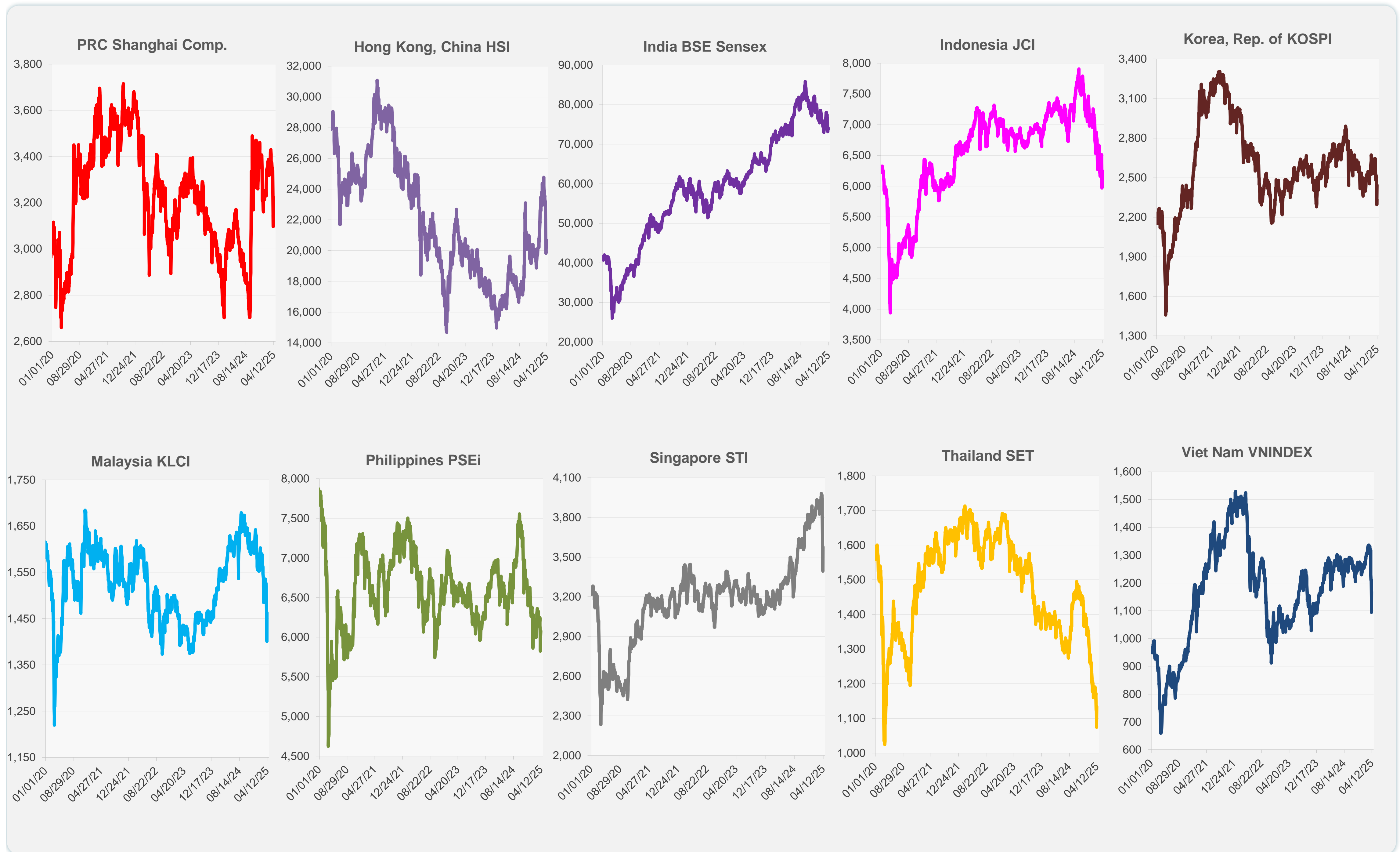
	Latest Closing	% change from Previous Day	% change from 01-Jan-25
US Dow Jones Ind Avg	39,593.66	-2.50	-6.94
US NASDAQ	16,387.31	-4.31	-15.14
US S&P 500	5,268.05	-3.46	-10.43
UK FTSE 100	7,913.25	3.04	-3.18
EURO STOXX 50	4,818.92	4.26	-1.57
Japan NIKKEI 225	34,609.00	9.13	-13.25
Bangladesh DSEX	5,205.23	0.18	-0.25
PRC Shanghai Comp.	3,223.64	1.16	-3.82
Hong Kong, China HSI	20,681.78	2.06	3.10
India BSE Sensex	73,847.15	0.00	-5.94
Indonesia JCI	6,254.02	4.79	-11.67
Korea, Rep. of KOSPI	2,445.06	6.60	1.90
Malaysia KLCI	1,463.13	4.47	-10.91
Pakistan KSE 100	116,189.21	1.78	-0.70
Philippines PSEi	6,077.82	1.19	-6.91
Singapore STI	3,577.83	5.43	-5.54
Sri Lanka CSEALL	15,580.83	4.74	-2.28
Taipei, China TWSE	19,000.03	9.25	-17.52
Thailand SET	1,133.95	4.21	-19.02
Viet Nam VNINDEX	1,168.34	6.77	-7.77



NIE = Newly Industrialized Economies



Sources: ADB calculations using data from CEIC Data Company and Haver Analytics.

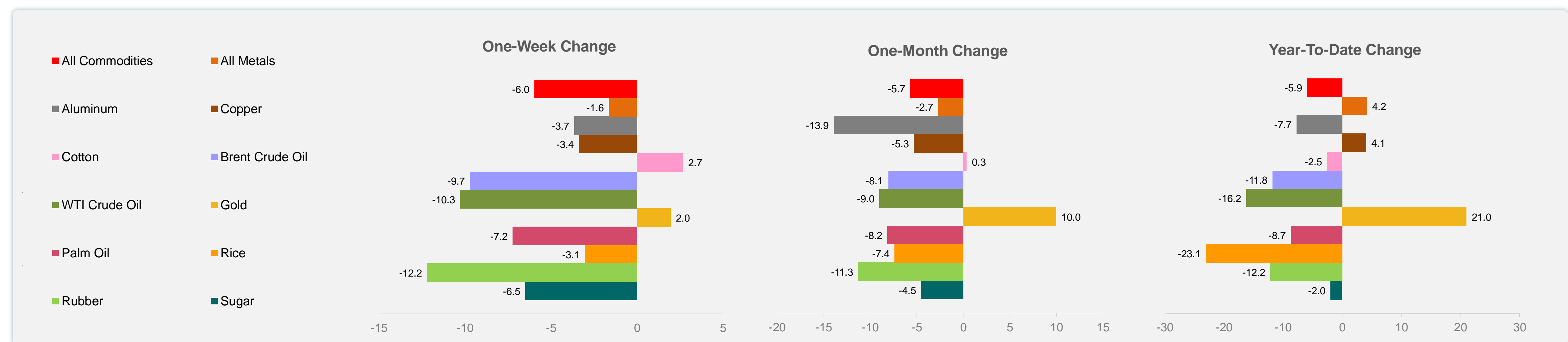
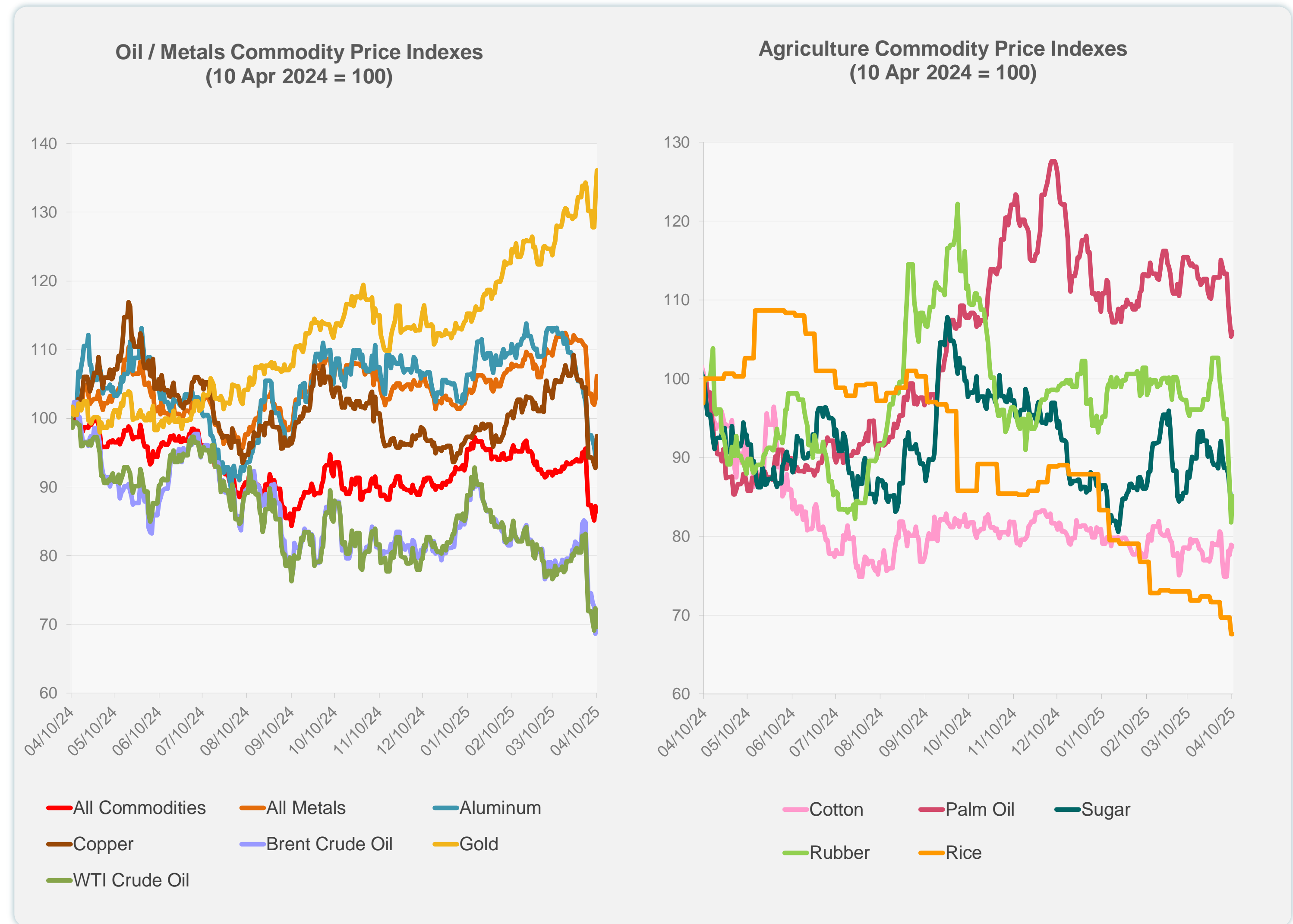


Sources: CEIC Data Company and Haver Analytics.

Daily Market Watch
COMMODITY PRICES

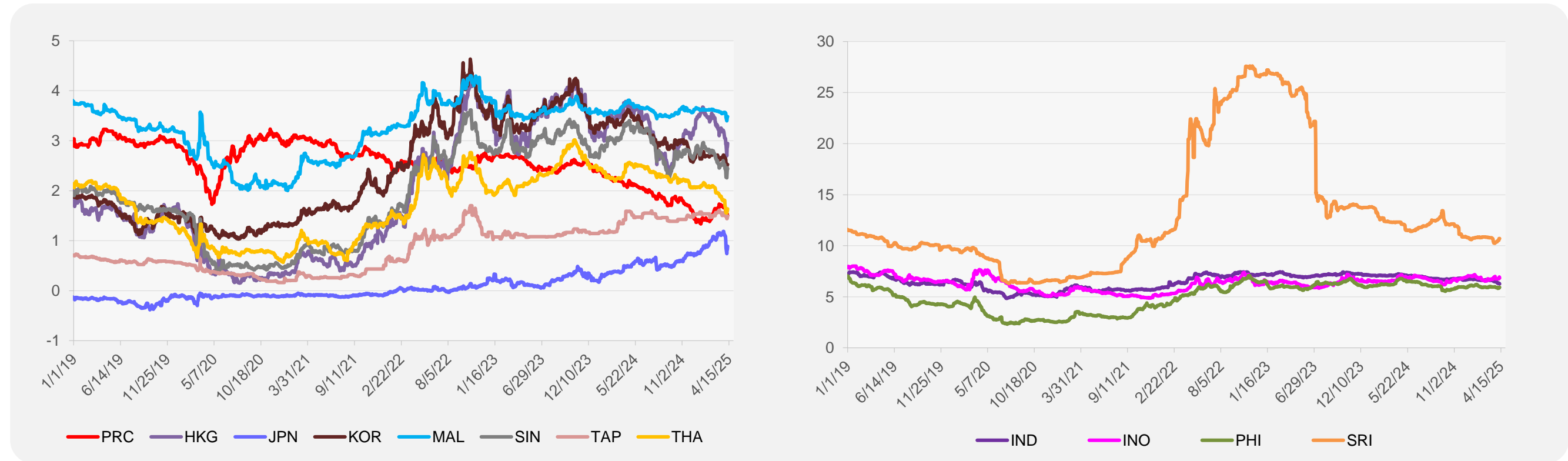
	Unit	Latest Closing	% change from Previous Day	% change from 01-Jan-25
S&P All Commodities	US\$	517.04	-0.87	-5.93
S&P All Metals	US\$	320.31	3.32	4.21
Aluminum	US\$/metric ton	2,331.98	2.48	-7.71
Copper	US\$/metric ton	9,003.54	5.04	4.06
Cotton	US cents/lb	64.22	-0.25	-2.55
Brent Crude Oil	US\$/barrel	65.39	4.45	-11.77
WTI Crude Oil	US\$/barrel	60.07	-3.66	-16.24
Gold	US\$/troy oz	3,176.23	3.03	21.02
Palm Oil	US\$/metric tonne	1,004.54	0.60	-8.69
Rice ¹	US\$/metric ton	413.00	0.00	-23.09
Rubber ²	US\$/kg	208.00	4.00	-12.16
Sugar	US cents/lb	17.84	0.00	-1.98

¹ Latest closing price from 9 April 2025.
² Singapore Exchange, Ribbed Smoked Sheet Rubber.

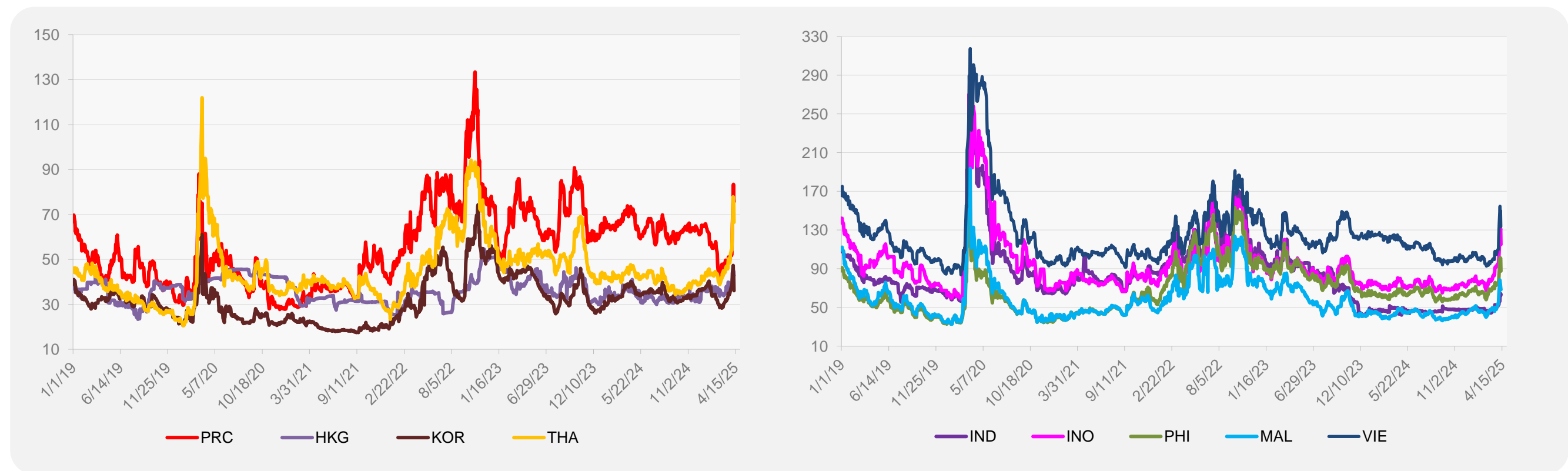


Source: ADB calculations using data from Bloomberg.

5-YEAR LOCAL CURRENCY GOVERNMENT BOND YIELDS (%)



5-YEAR CREDIT DEFAULT SWAP¹



¹ In USD and based on sovereign bonds.
Source: ADB calculations using data from Bloomberg.