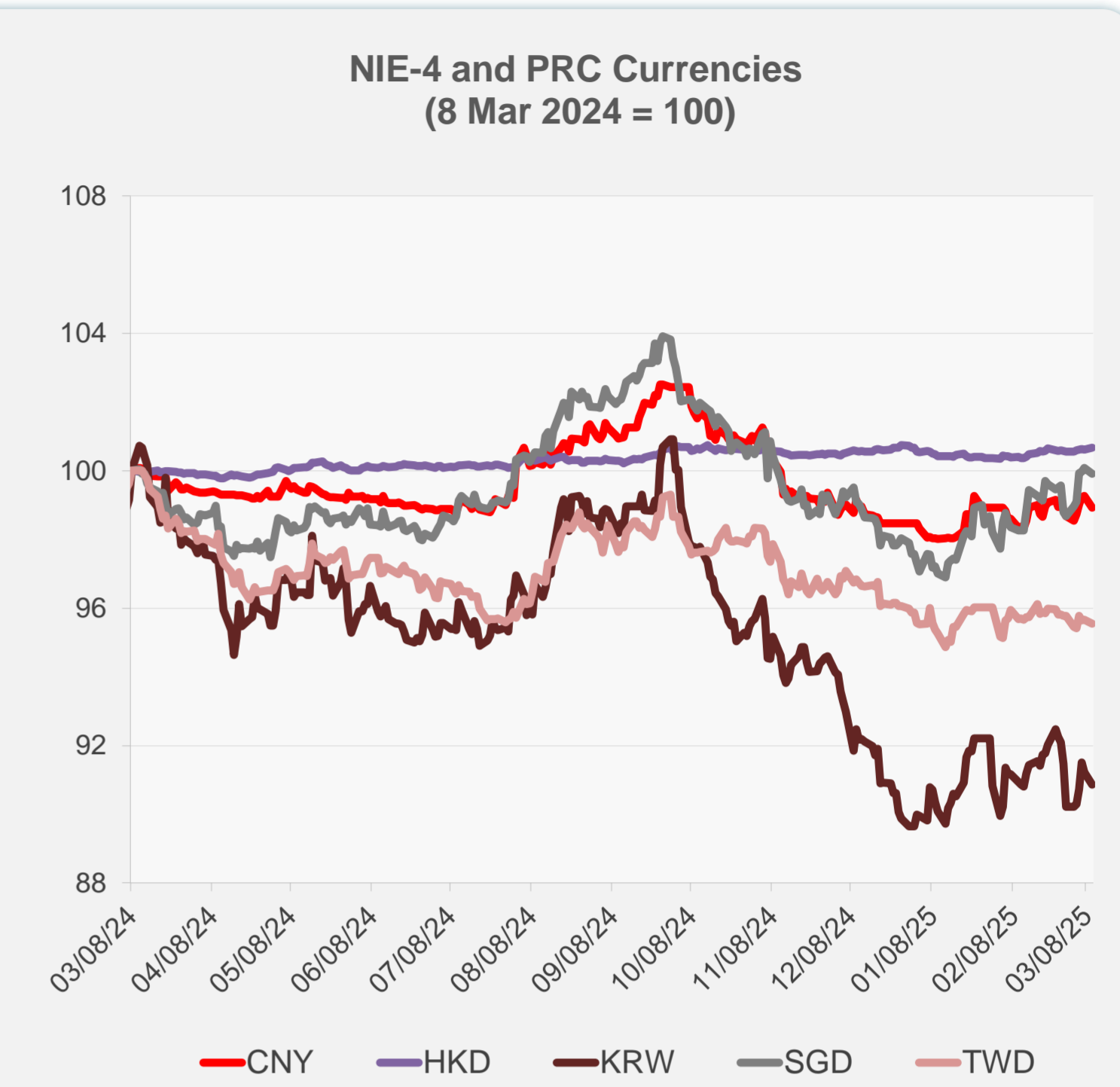
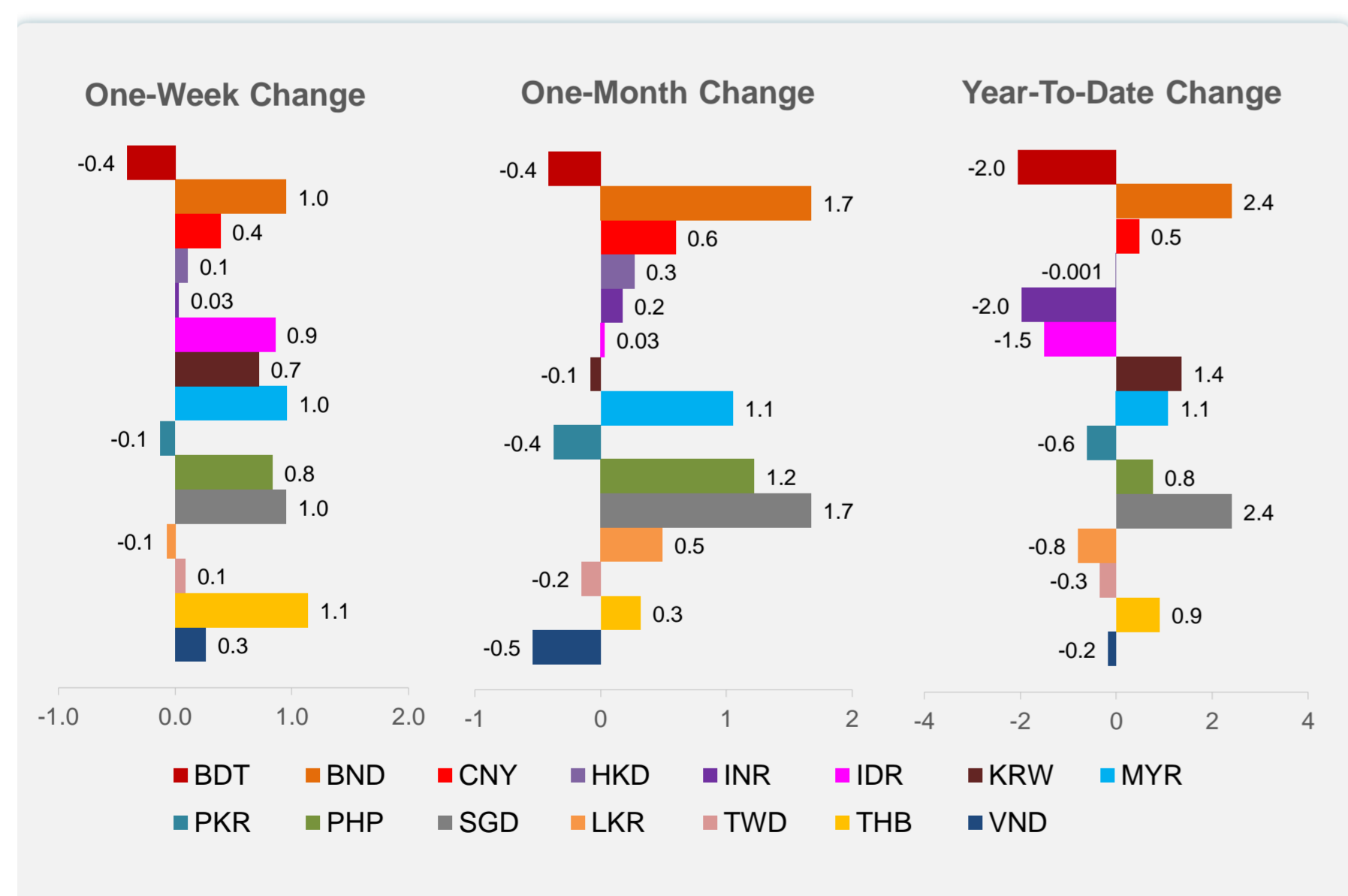
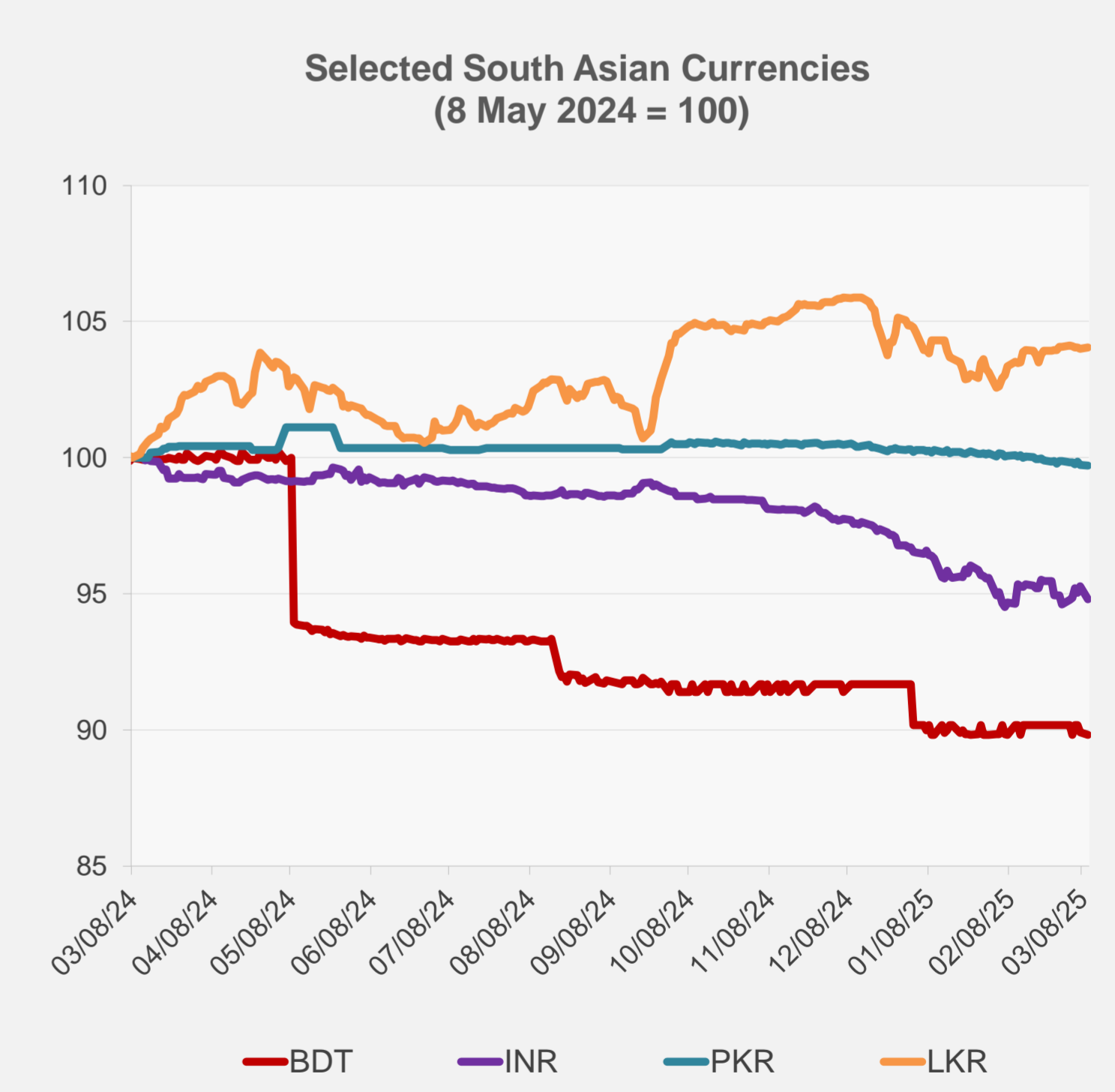
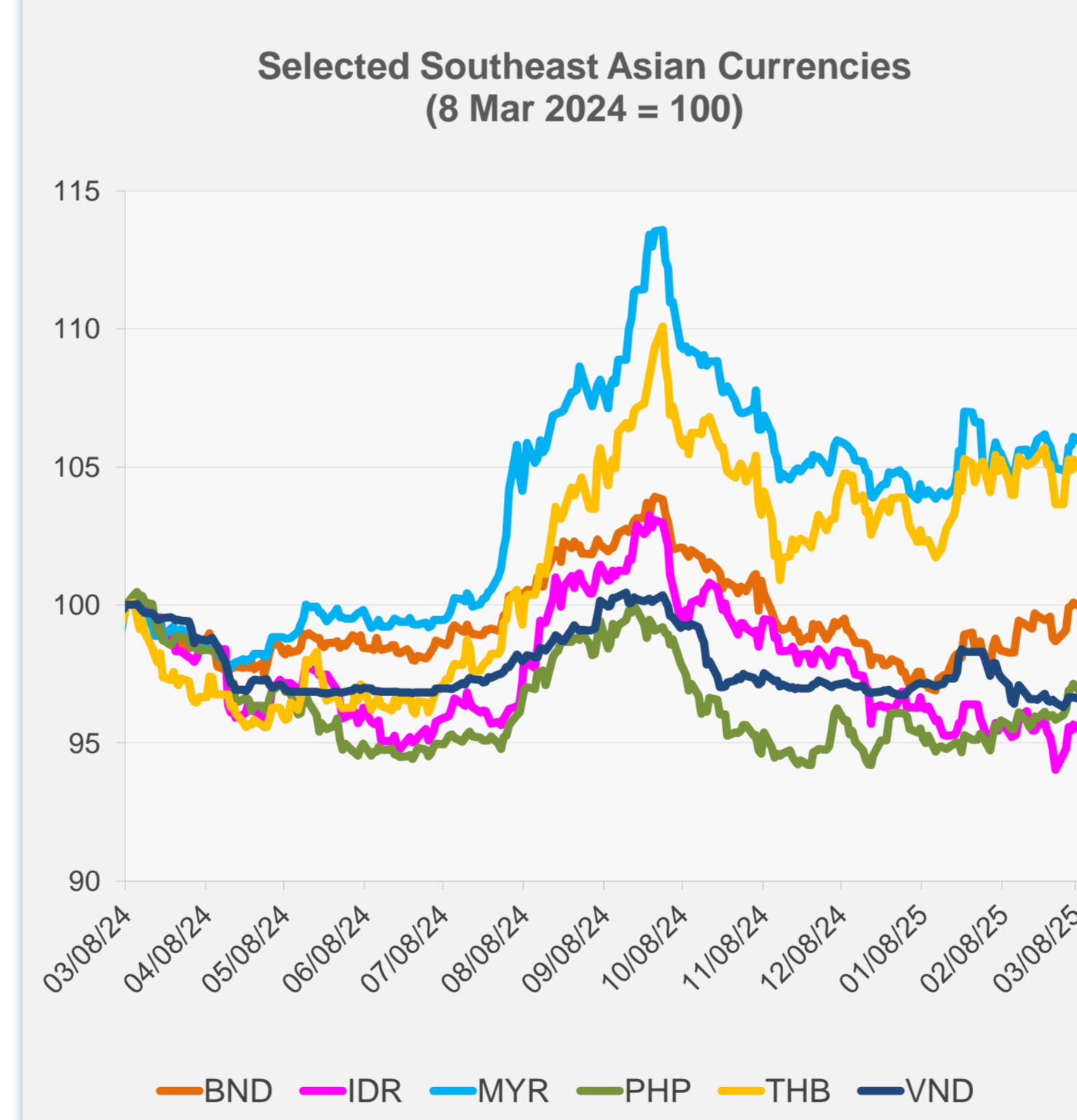


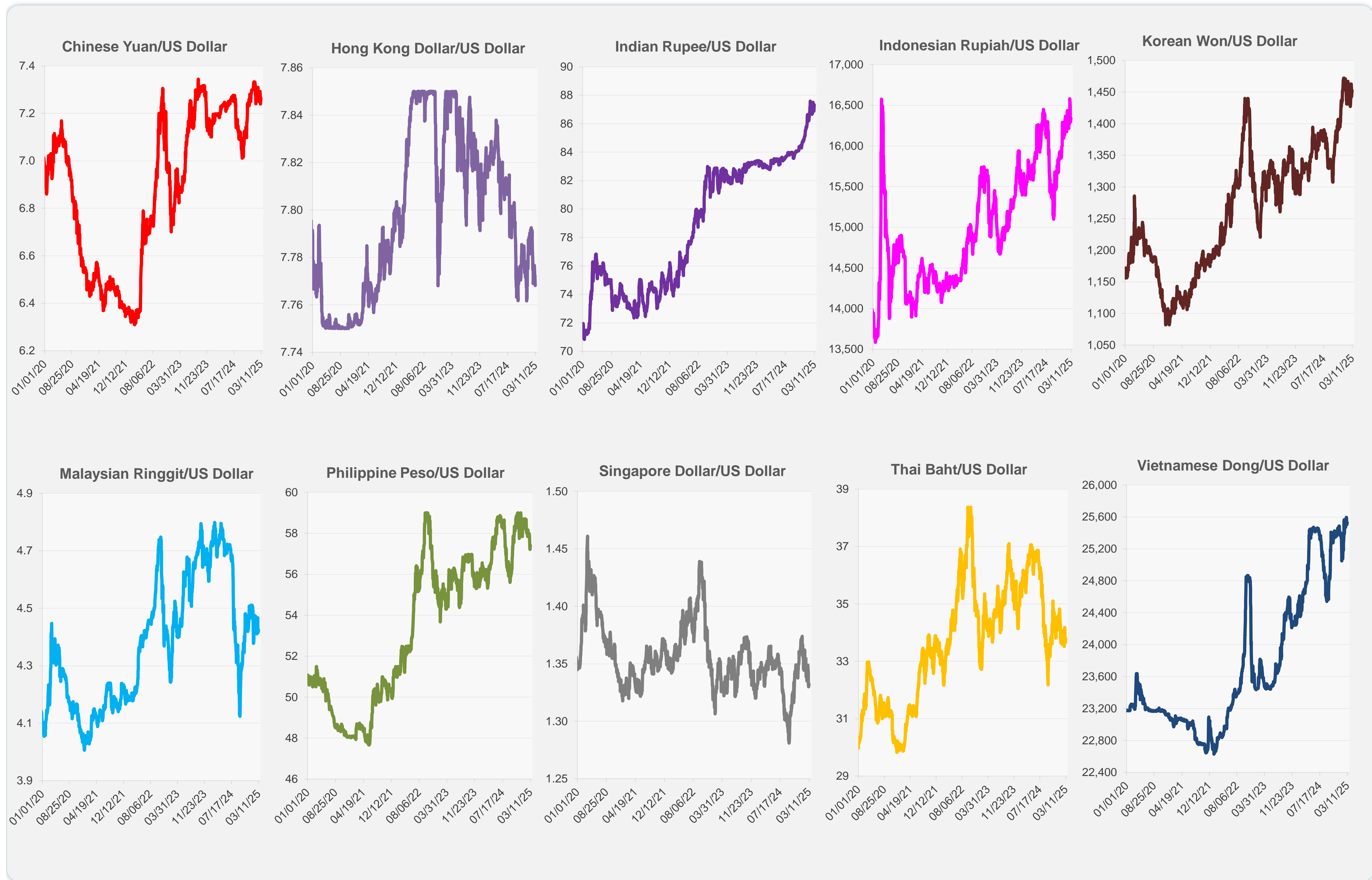
	Latest Closing	% change from Previous Day	% change from 01-Jan-25
Euro	0.92	-0.29	4.66
Japanese yen (JPY)	147.16	0.23	6.80
Bangladeshi taka (BDT)	122.00	-0.12	-2.05
Brunei dollar (BND)	1.33	-0.17	2.40
Chinese yuan (CNY)	7.26	-0.35	0.48
Hong Kong dollar (HKD)	7.77	0.06	0.00
Indian rupee (INR)	87.33	-0.51	-1.97
Indonesian rupiah (IDR)	16,340.00	-0.28	-1.50
Korean won (KRW)	1,452.45	-0.39	1.36
Malaysian ringgit (MYR)	4.42	-0.19	1.09
Pakistan rupee (PKR)	280.05	-0.02	-0.60
Philippine peso (PHP)	57.41	-0.35	0.76
Singapore dollar (SGD)	1.33	-0.17	2.40
Sri Lanka rupee (LKR)	295.33	0.04	-0.79
Taipei,China NT dollar (TWD)	32.90	-0.13	-0.34
Thai baht (THB)	33.79	-0.43	0.90
Vietnamese dong (VND)	25,527.50	-0.09	-0.17



NIE = Newly Industrialized Economies



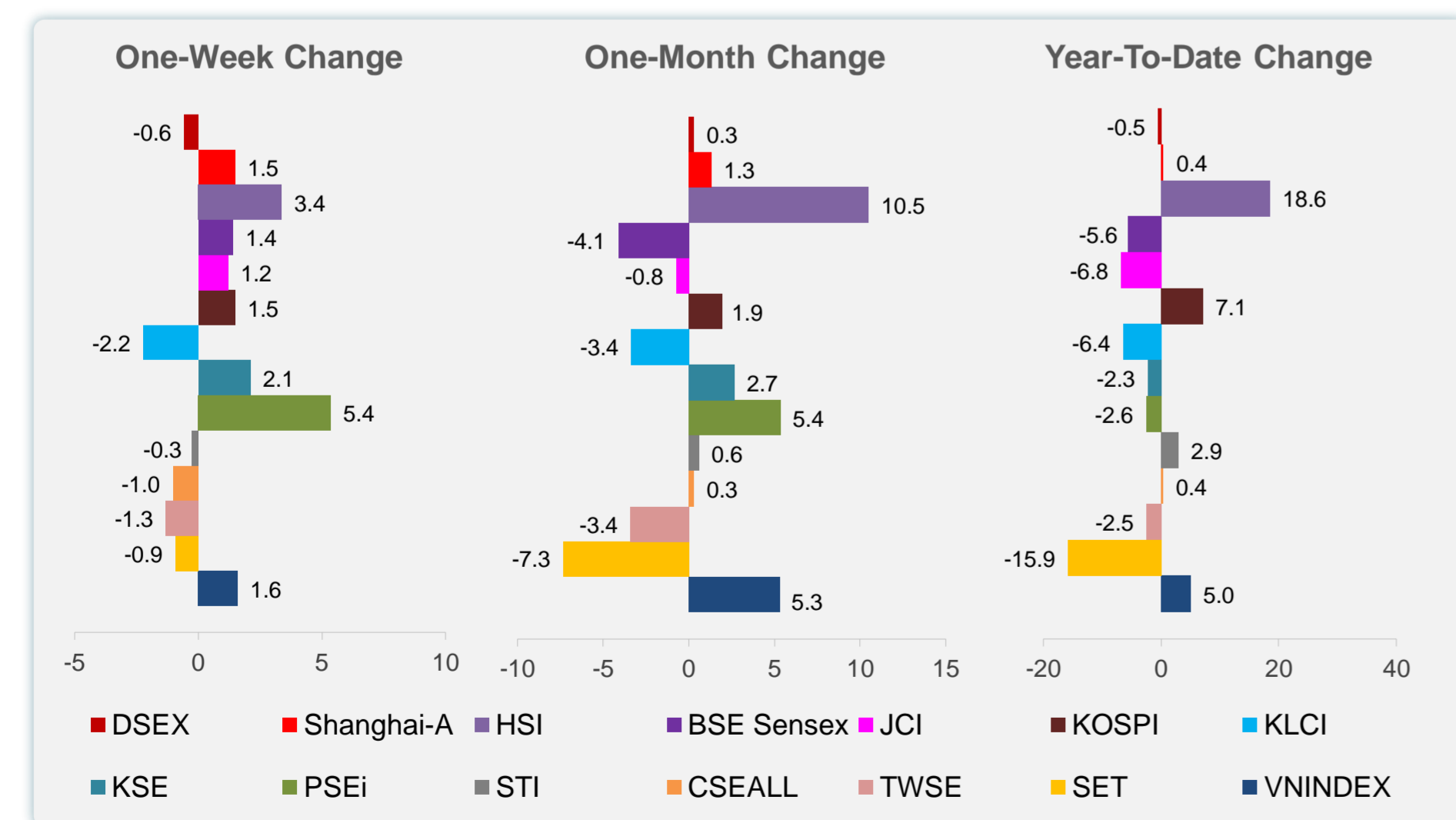
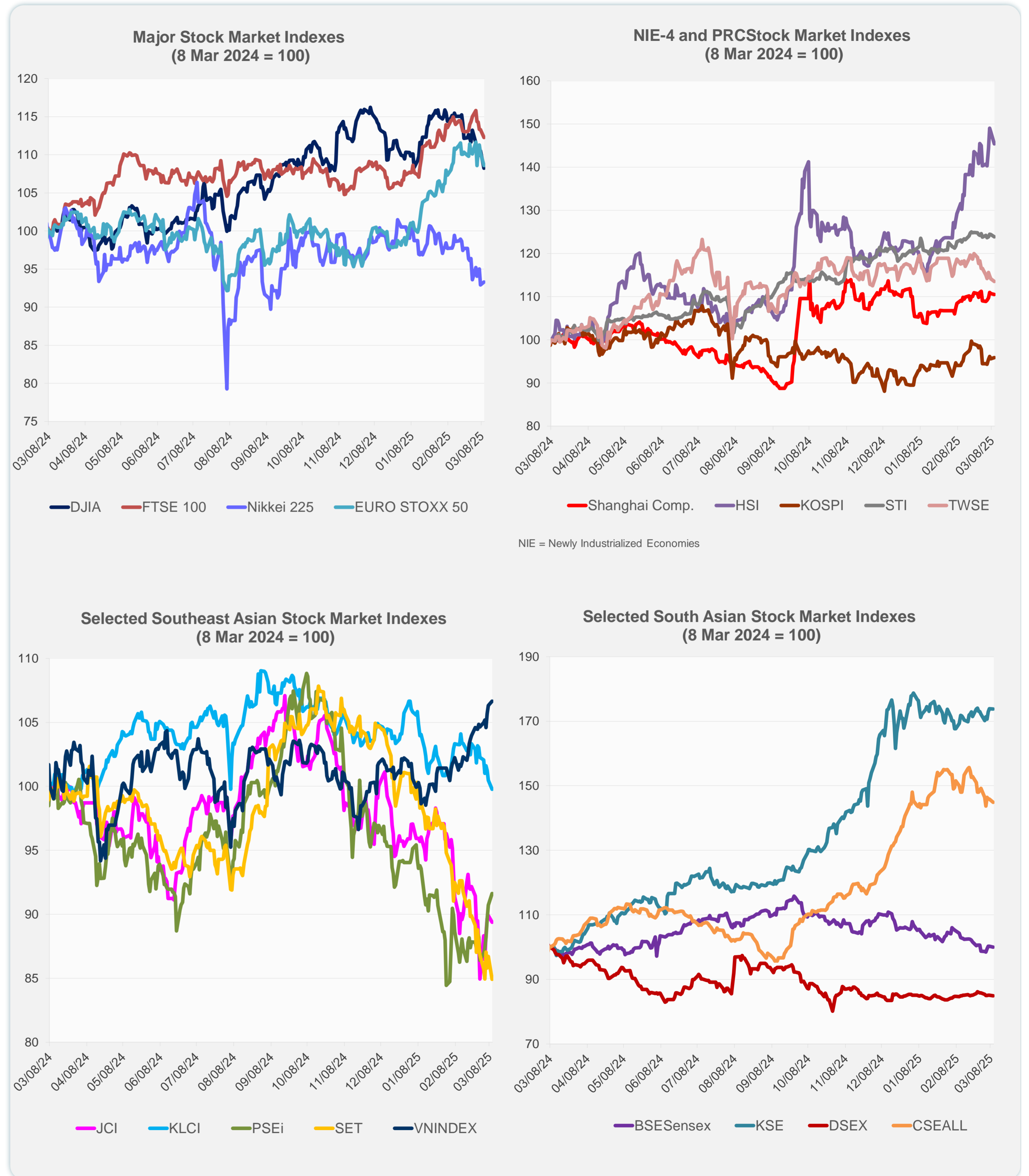
Note: Negative/Decreasing values indicate depreciation of local currency, and positive/increasing values indicate appreciation.
Source: ADB calculations using data from Haver Analytics.



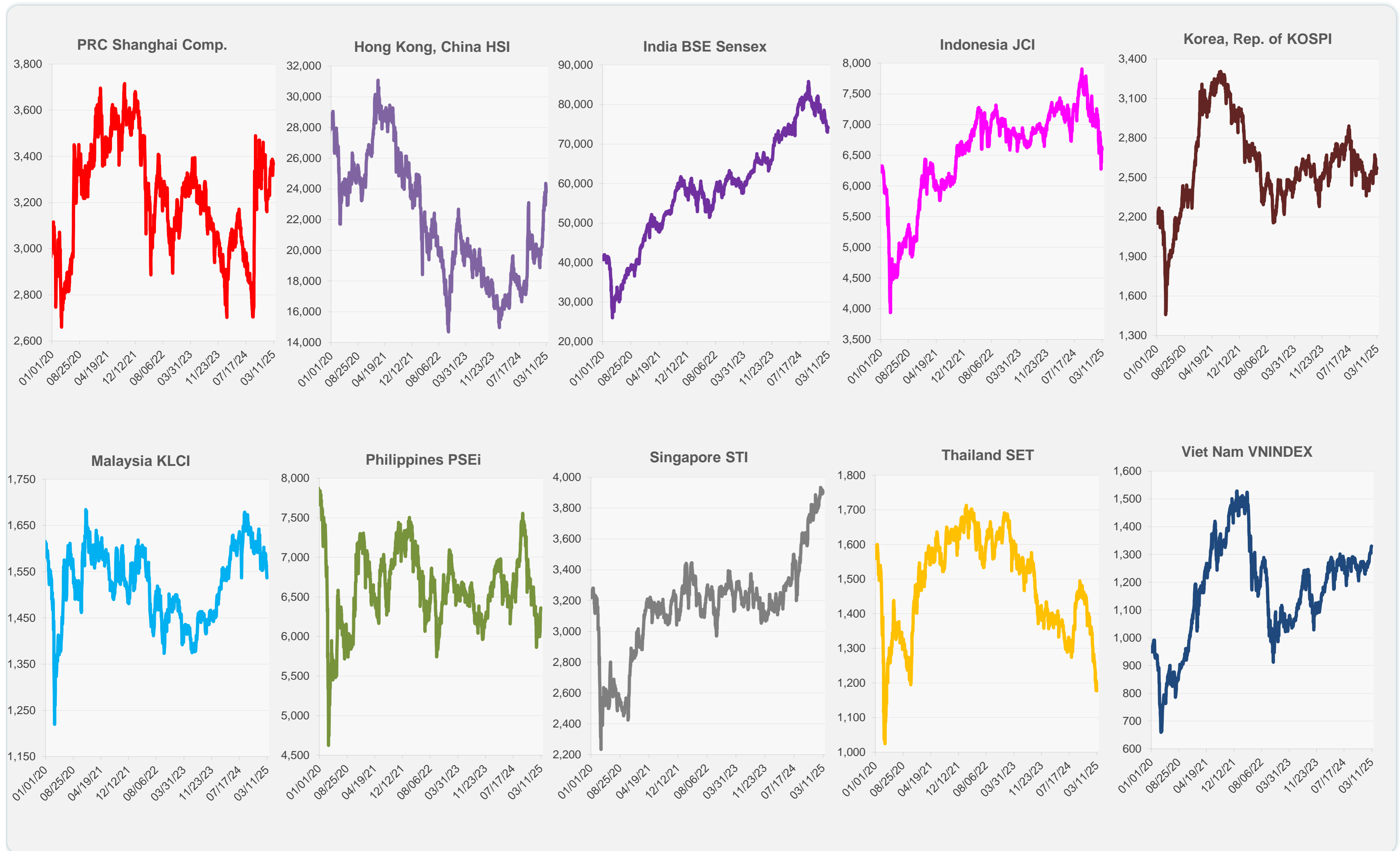
Source: Haver Analytics.

Daily Market Watch STOCK INDEXES

	Latest Closing	% change from Previous Day	% change from 01-Jan-25
US Dow Jones Ind Avg	41,911.71	-2.08	-1.49
US NASDAQ	17,468.32	-4.00	-9.54
US S&P 500	5,614.56	-2.70	-4.54
UK FTSE 100	8,600.22	-0.92	5.23
EURO STOXX 50	5,386.98	-1.49	10.03
Japan NIKKEI 225	37,028.27	0.38	-7.18
Bangladesh DSEX	5,190.95	-0.25	-0.52
PRC Shanghai Comp.	3,366.16	-0.19	0.43
Hong Kong, China HSI	23,783.49	-1.85	18.56
India BSE Sensex	74,115.17	-0.29	-5.59
Indonesia JCI	6,598.21	-0.57	-6.80
Korea, Rep. of KOSPI	2,570.39	0.27	7.12
Malaysia KLCI	1,536.46	-0.70	-6.45
Pakistan KSE 100	114,356.34	-0.04	-2.27
Philippines PSEi	6,360.77	0.99	-2.57
Singapore STI	3,899.07	-0.39	2.94
Sri Lanka CSEALL	16,000.78	-0.71	0.35
Taipei, China TWSE	22,459.15	-0.52	-2.50
Thailand SET	1,177.44	-2.05	-15.91
Viet Nam VNINDEX	1,330.28	0.32	5.01



Sources: ADB calculations using data from CEIC Data Company and Haver Analytics.



Sources: CEIC Data Company and Haver Analytics.

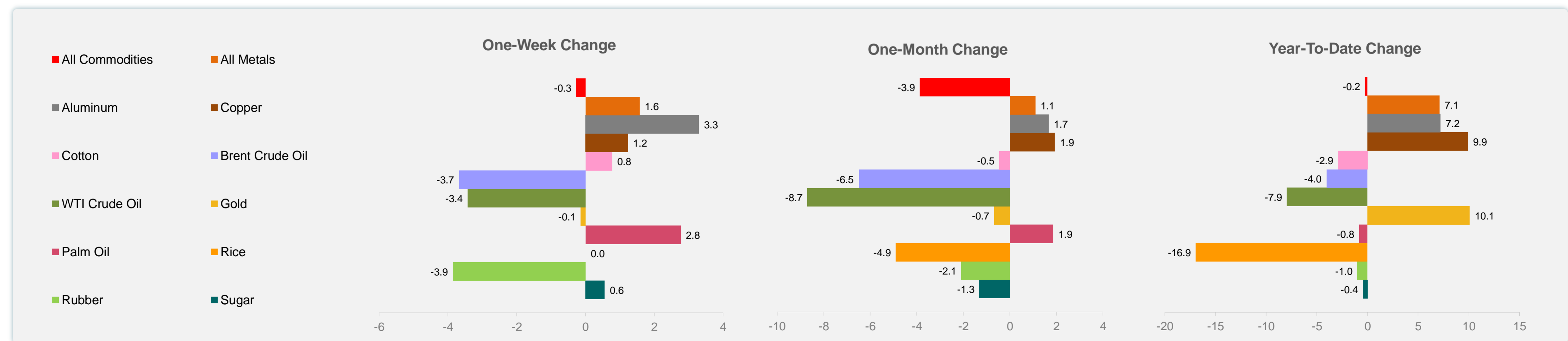
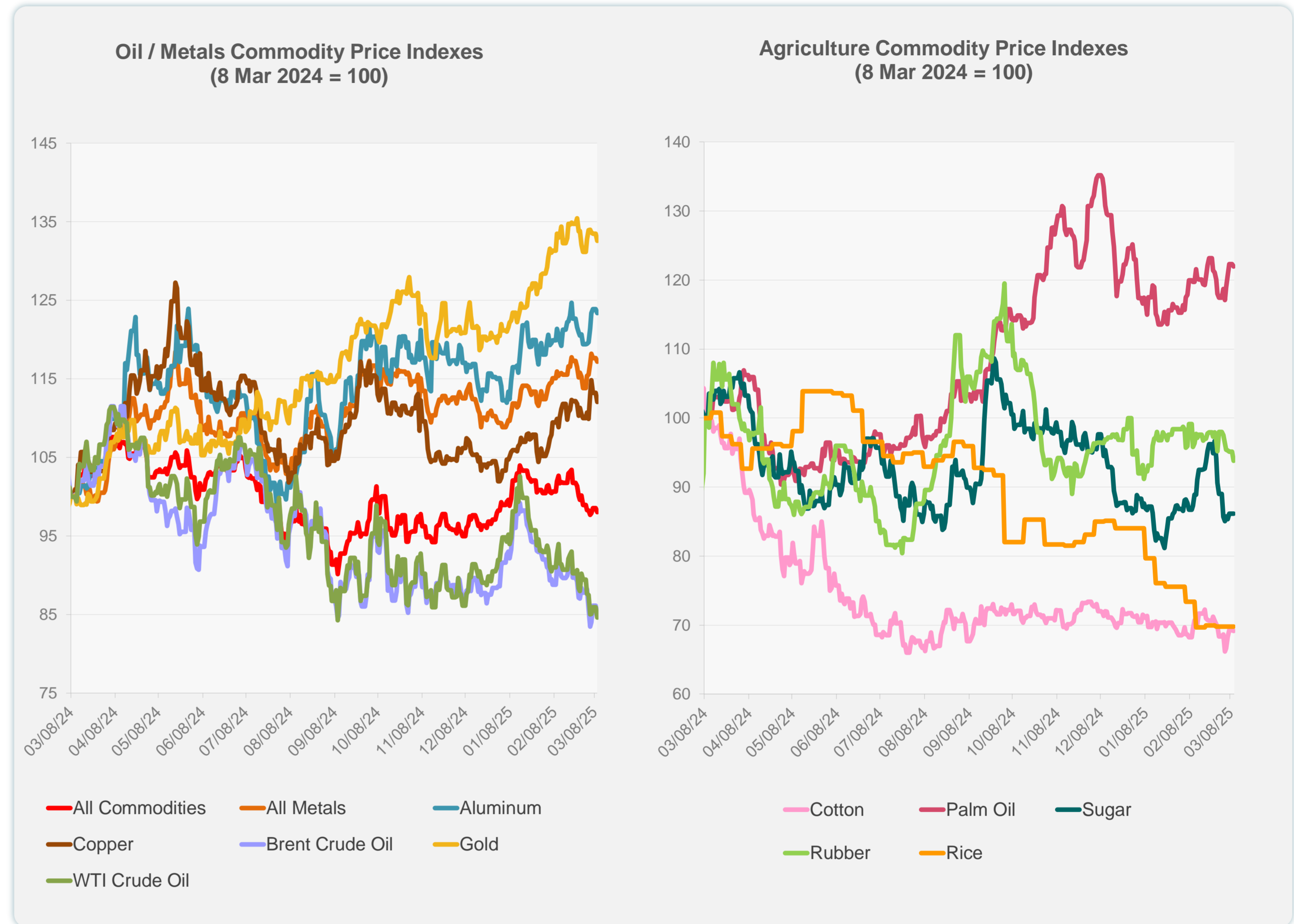
Daily Market Watch
COMMODITY PRICES

11 March 2025, 9:00 AM Manila

	Unit	Latest Closing	% change from Previous Day	% change from 01-Jan-25
S&P All Commodities	US\$	548.37	-0.53	-0.23
S&P All Metals	US\$	329.24	-0.38	7.11
Aluminum	US\$/metric ton	2,708.97	-0.41	7.21
Copper	US\$/metric ton	9,510.04	-1.03	9.91
Cotton	US cents/lb	64.00	-0.11	-2.88
Brent Crude Oil	US\$/barrel	71.11	-1.30	-4.04
WTI Crude Oil	US\$/barrel	66.03	-1.51	-7.93
Gold	US\$/troy oz	2,888.71	-0.70	10.07
Palm Oil	US\$/metric tonne	1,091.21	-0.27	-0.81
Rice ¹	US\$/metric ton	446.00	0.00	-16.95
Rubber ²	US\$/kg	234.50	-1.43	-0.97
Sugar	US cents/lb	18.12	0.00	-0.44

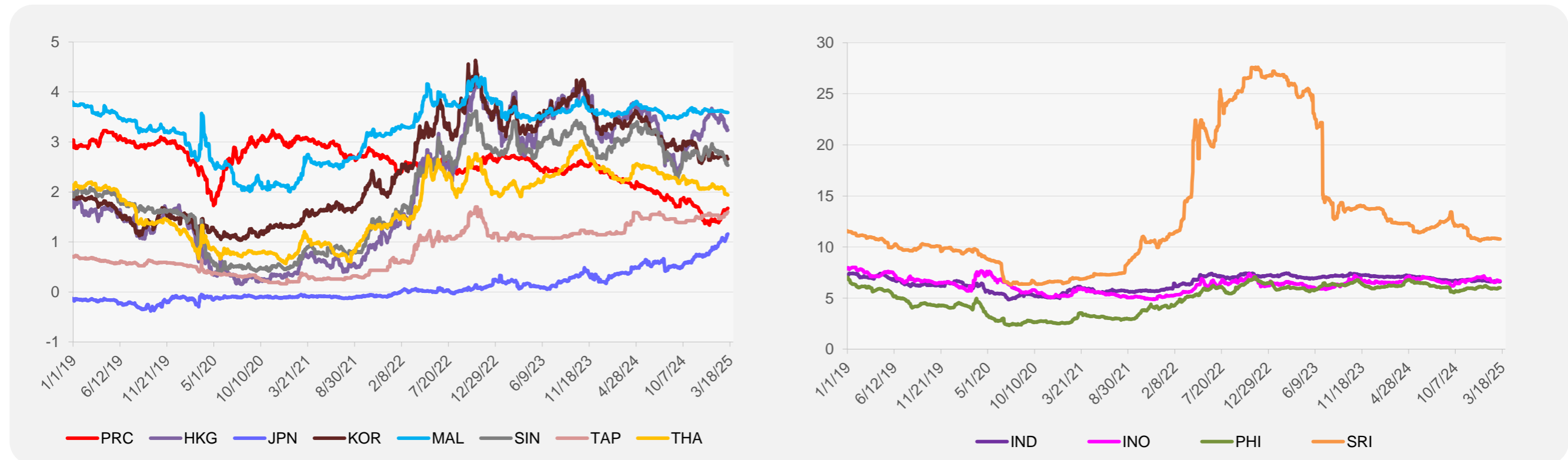
¹ Latest closing price from 26 February 2025.

² Singapore Exchange, Ribbed Smoked Sheet Rubber.

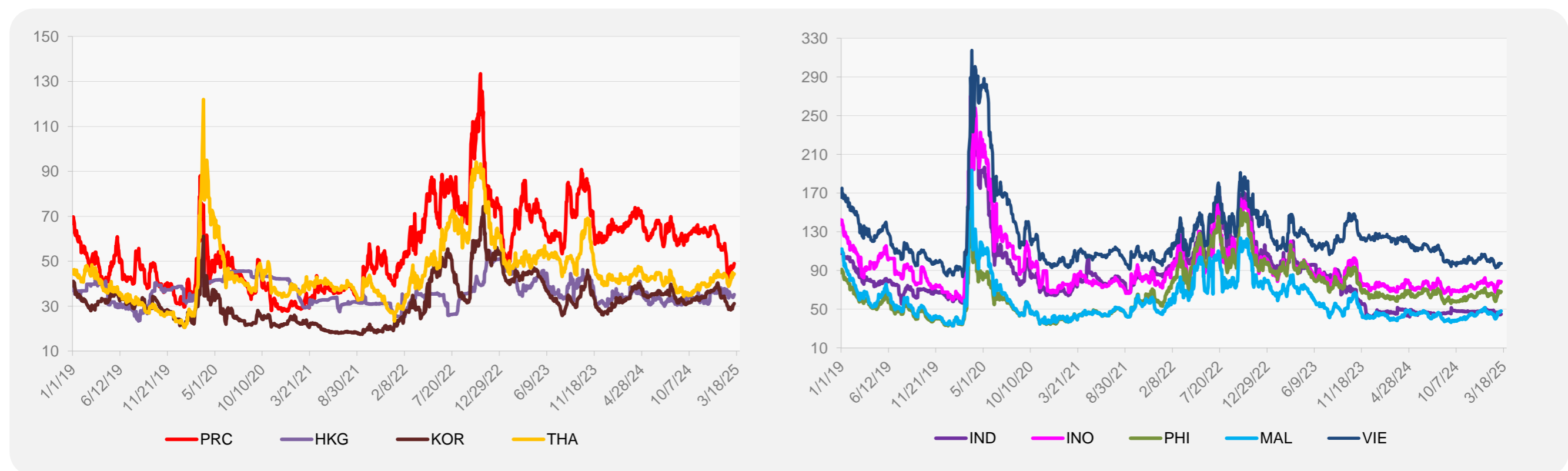


Source: ADB calculations using data from Bloomberg.

5-YEAR LOCAL CURRENCY GOVERNMENT BOND YIELDS (%)



5-YEAR CREDIT DEFAULT SWAP¹



¹ In USD and based on sovereign bonds.
Source: ADB calculations using data from Bloomberg.