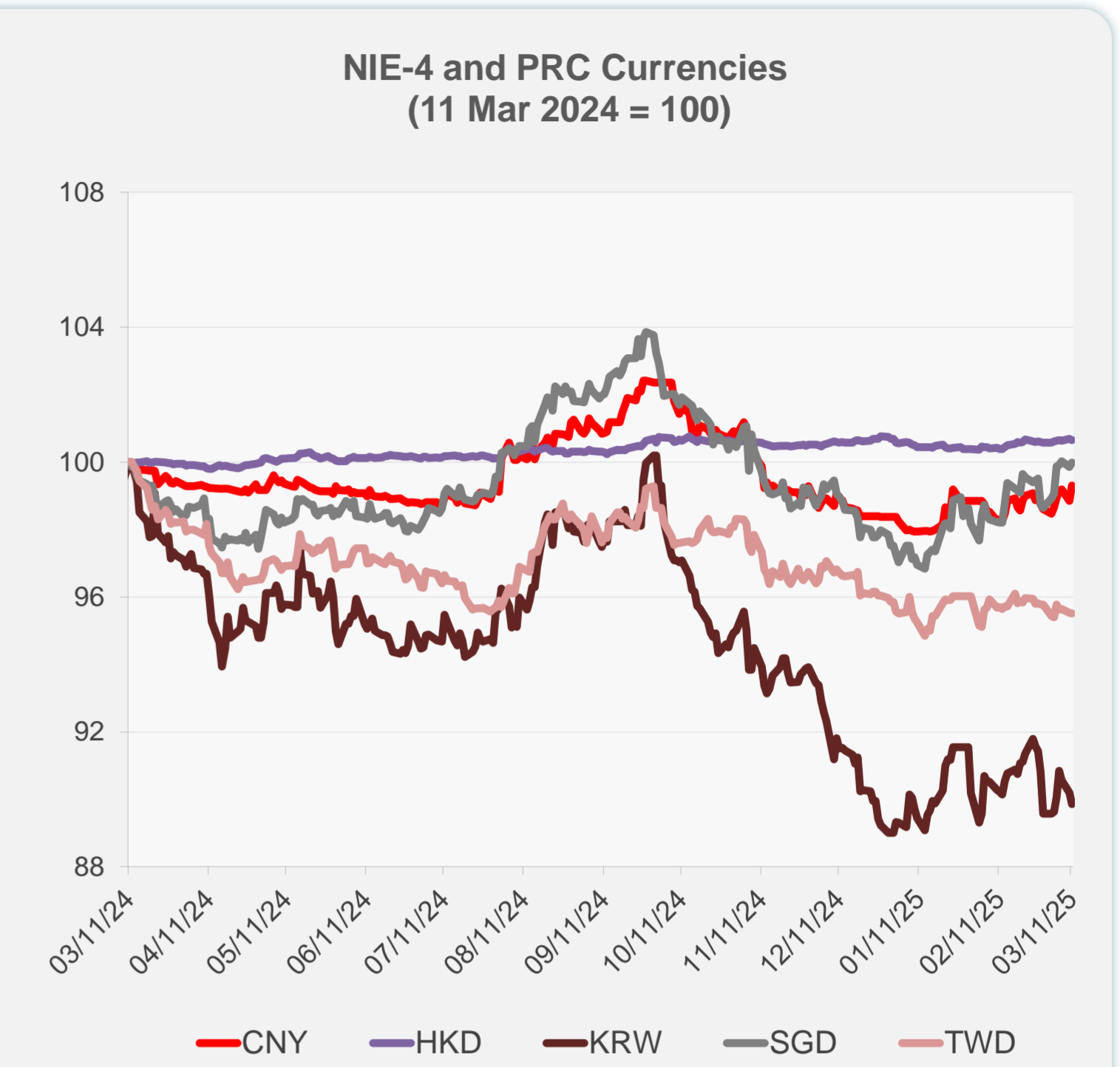
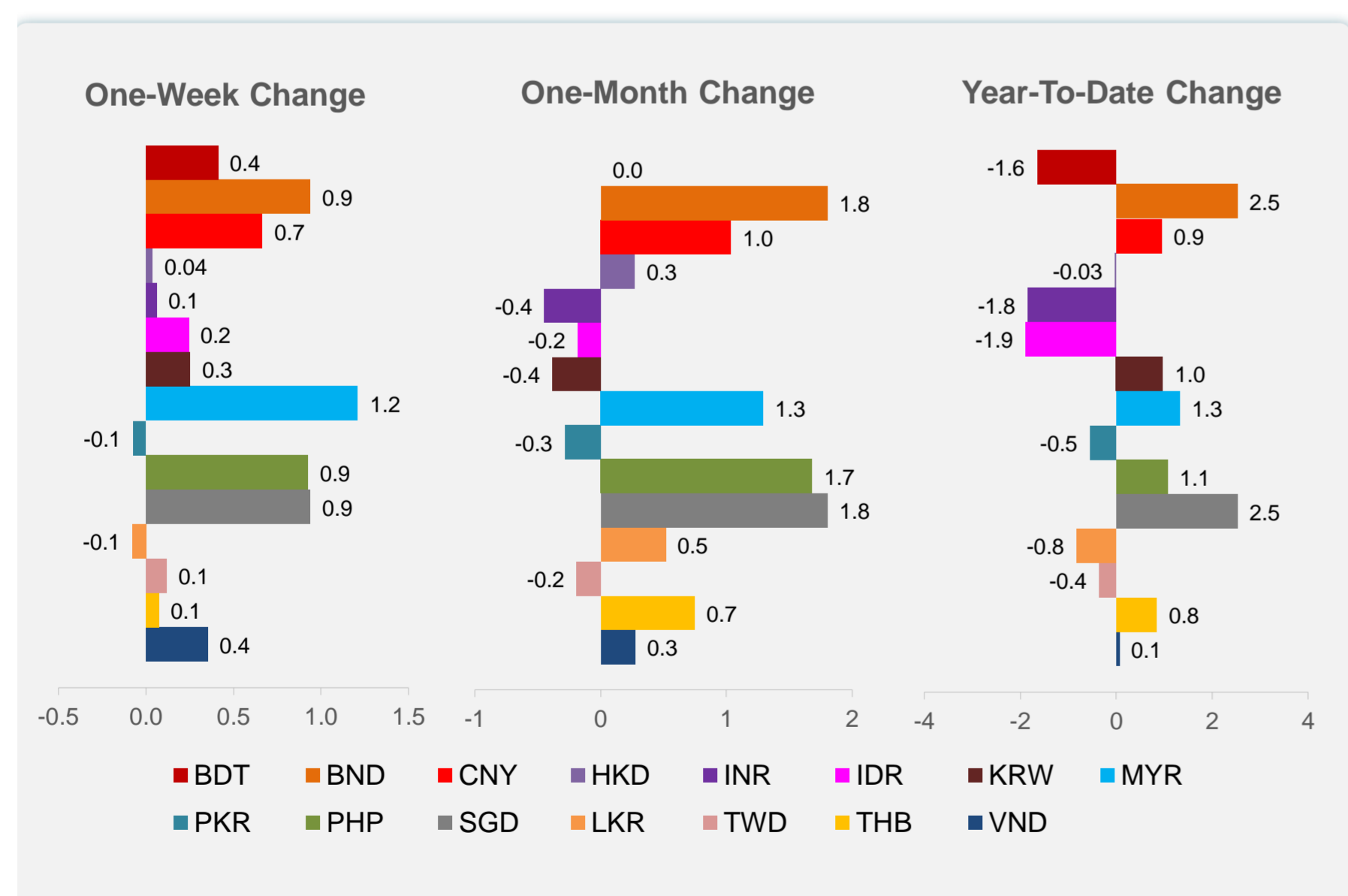
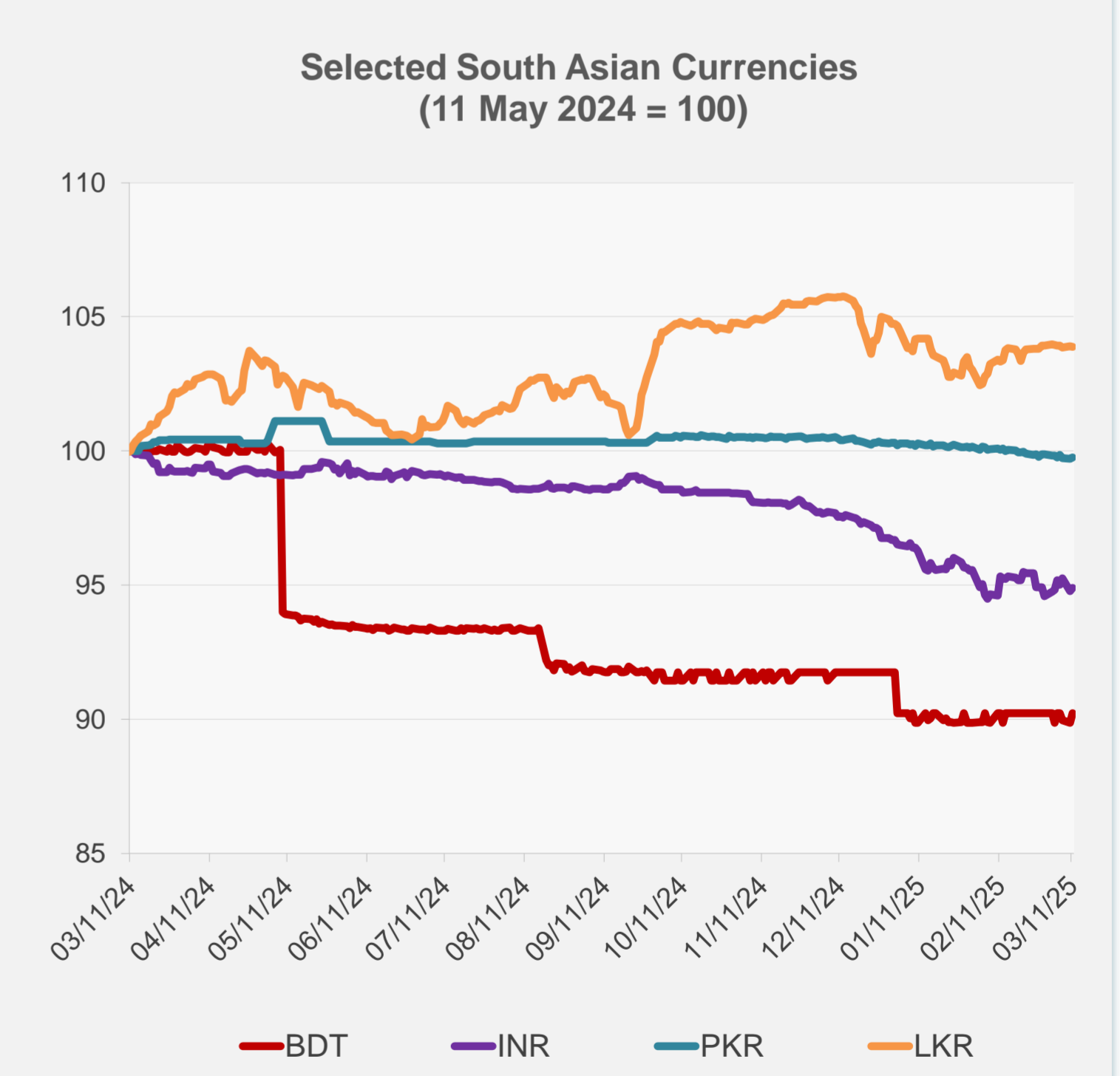
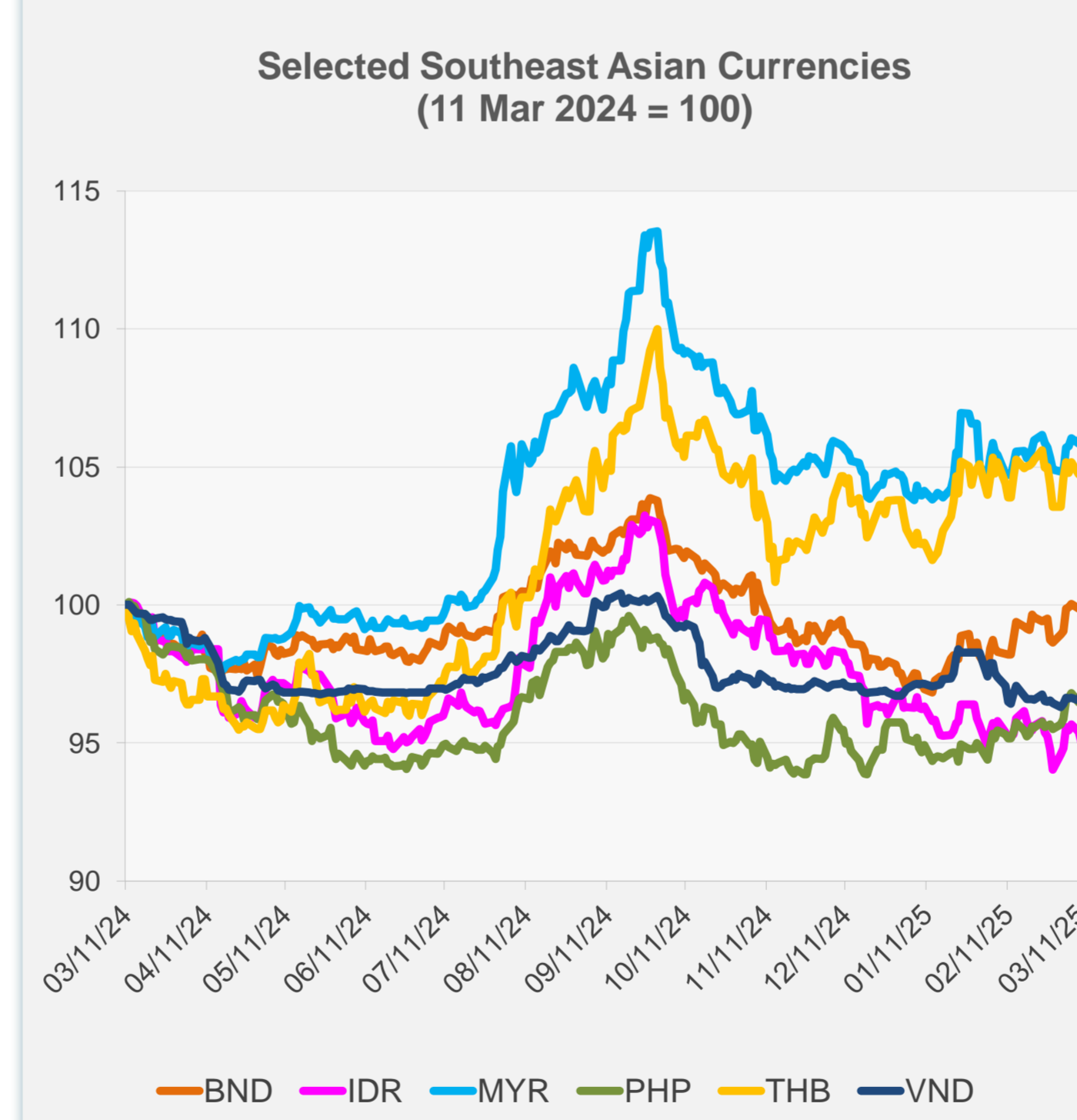


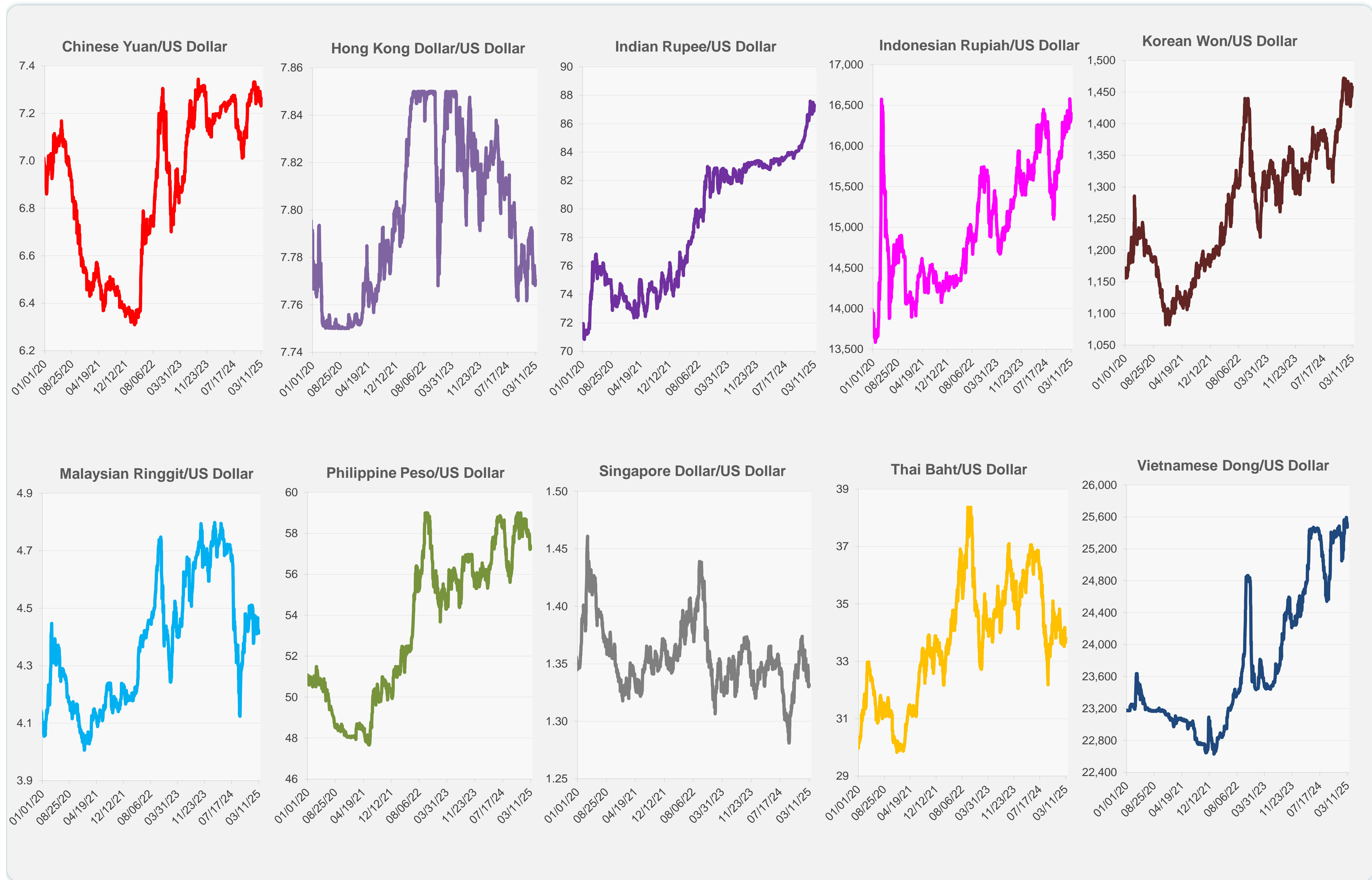
	Latest Closing	% change from Previous Day	% change from 01-Jan-25
Euro	0.92	0.82	5.52
Japanese yen (JPY)	147.49	-0.23	6.56
Bangladeshi taka (BDT)	121.50	0.41	-1.65
Brunei dollar (BND)	1.33	0.12	2.53
Chinese yuan (CNY)	7.23	0.46	0.94
Hong Kong dollar (HKD)	7.77	-0.03	-0.03
Indian rupee (INR)	87.22	0.13	-1.84
Indonesian rupiah (IDR)	16,405.00	-0.40	-1.89
Korean won (KRW)	1,458.00	-0.38	0.97
Malaysian ringgit (MYR)	4.41	0.24	1.33
Pakistan rupee (PKR)	279.90	0.05	-0.54
Philippine peso (PHP)	57.23	0.31	1.07
Singapore dollar (SGD)	1.33	0.12	2.53
Sri Lanka rupee (LKR)	295.43	-0.03	-0.82
Taipei,China NT dollar (TWD)	32.90	-0.02	-0.35
Thai baht (THB)	33.81	-0.06	0.84
Vietnamese dong (VND)	25,470.00	0.23	0.06



NIE = Newly Industrialized Economies



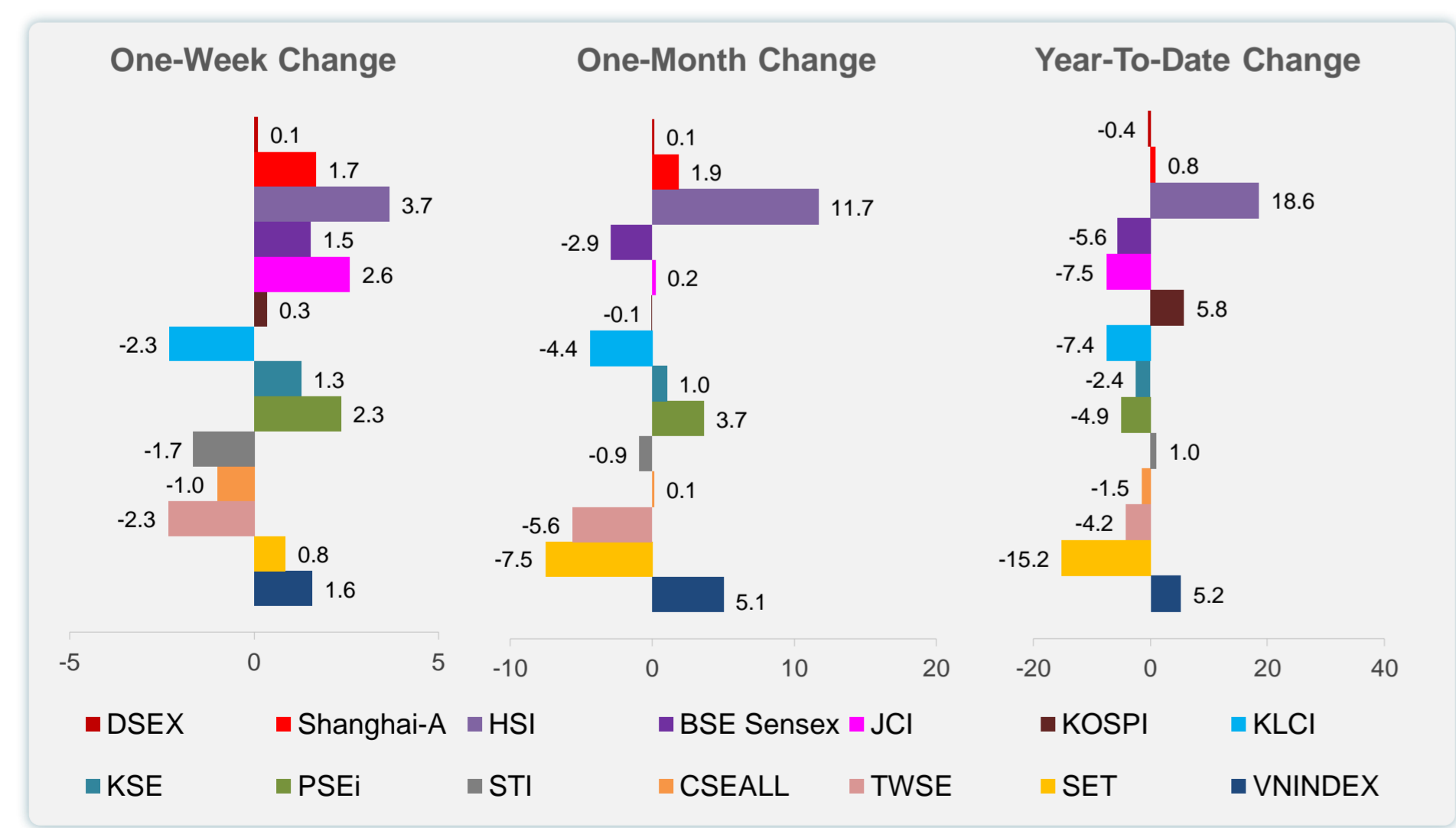
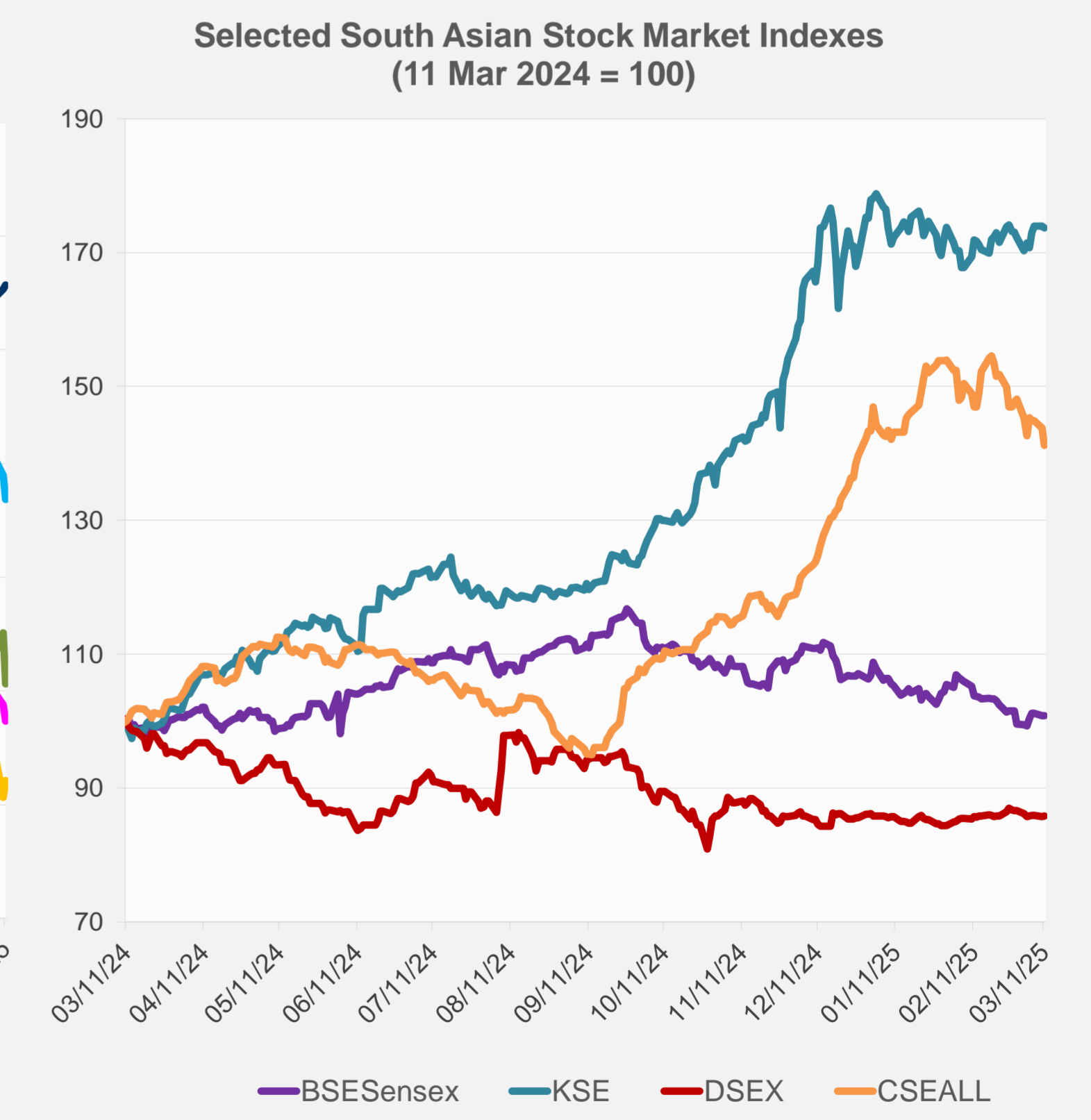
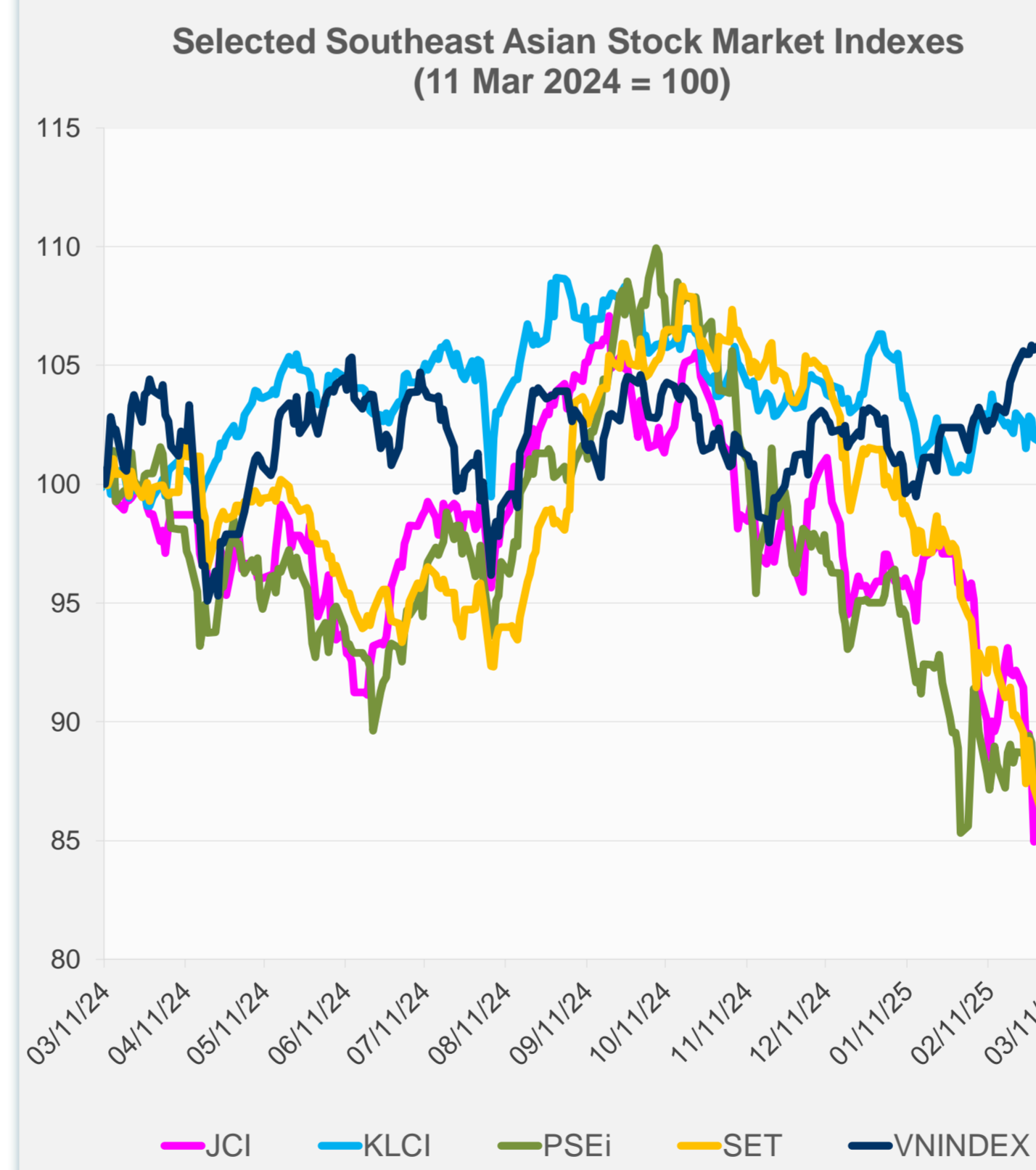
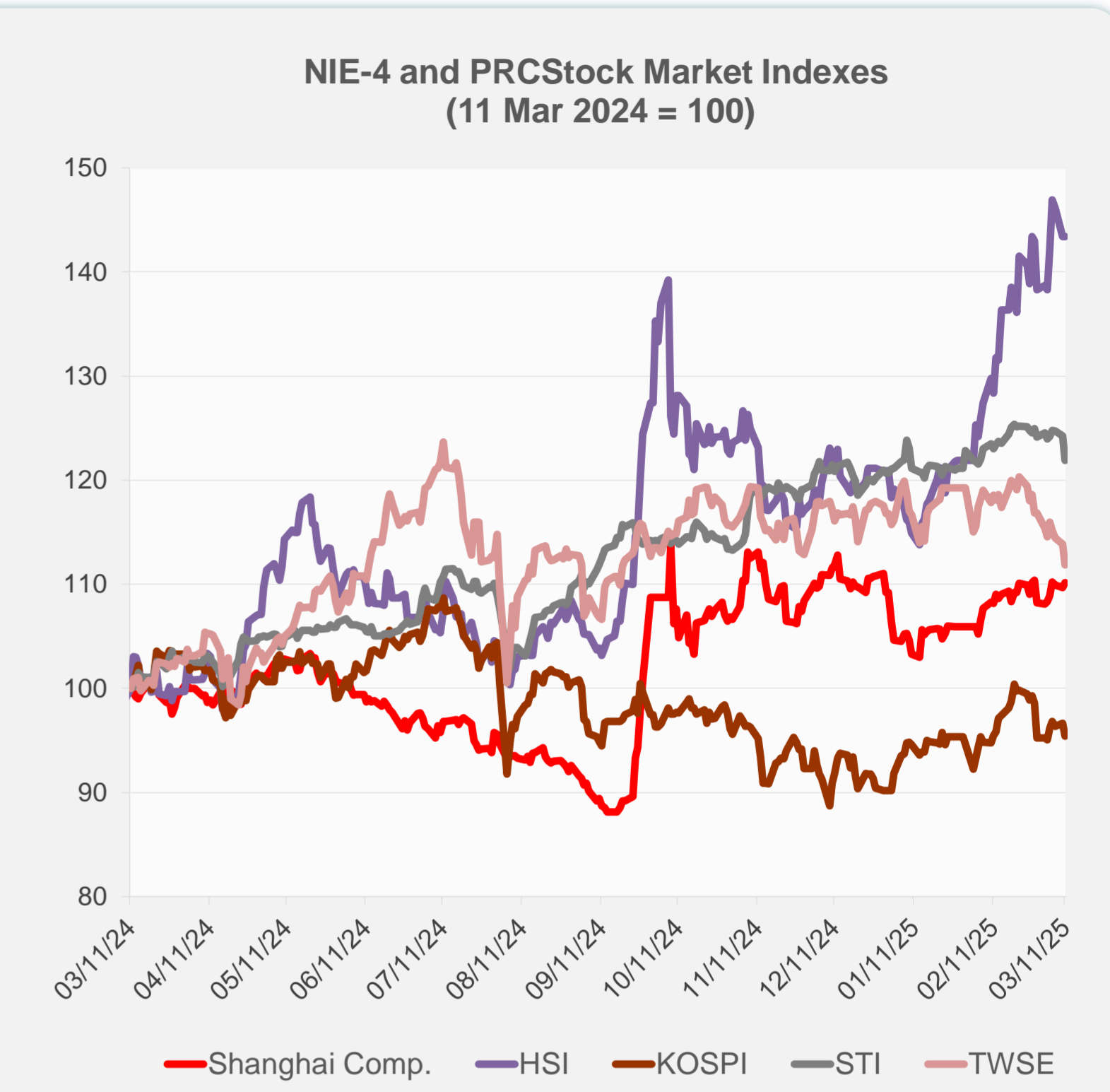
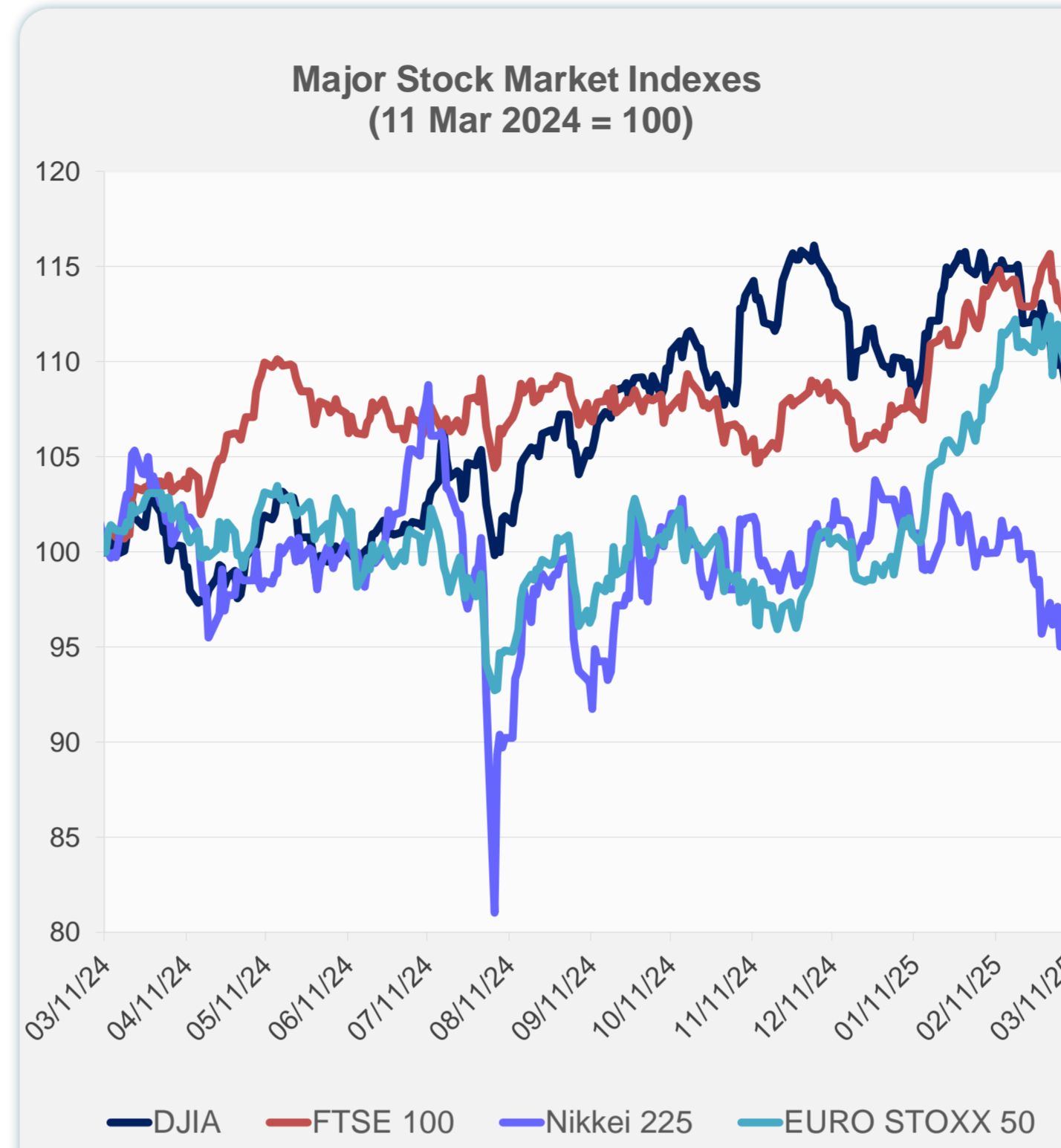
Note: Negative/Decreasing values indicate depreciation of local currency, and positive/increasing values indicate appreciation.
Source: ADB calculations using data from Haver Analytics.



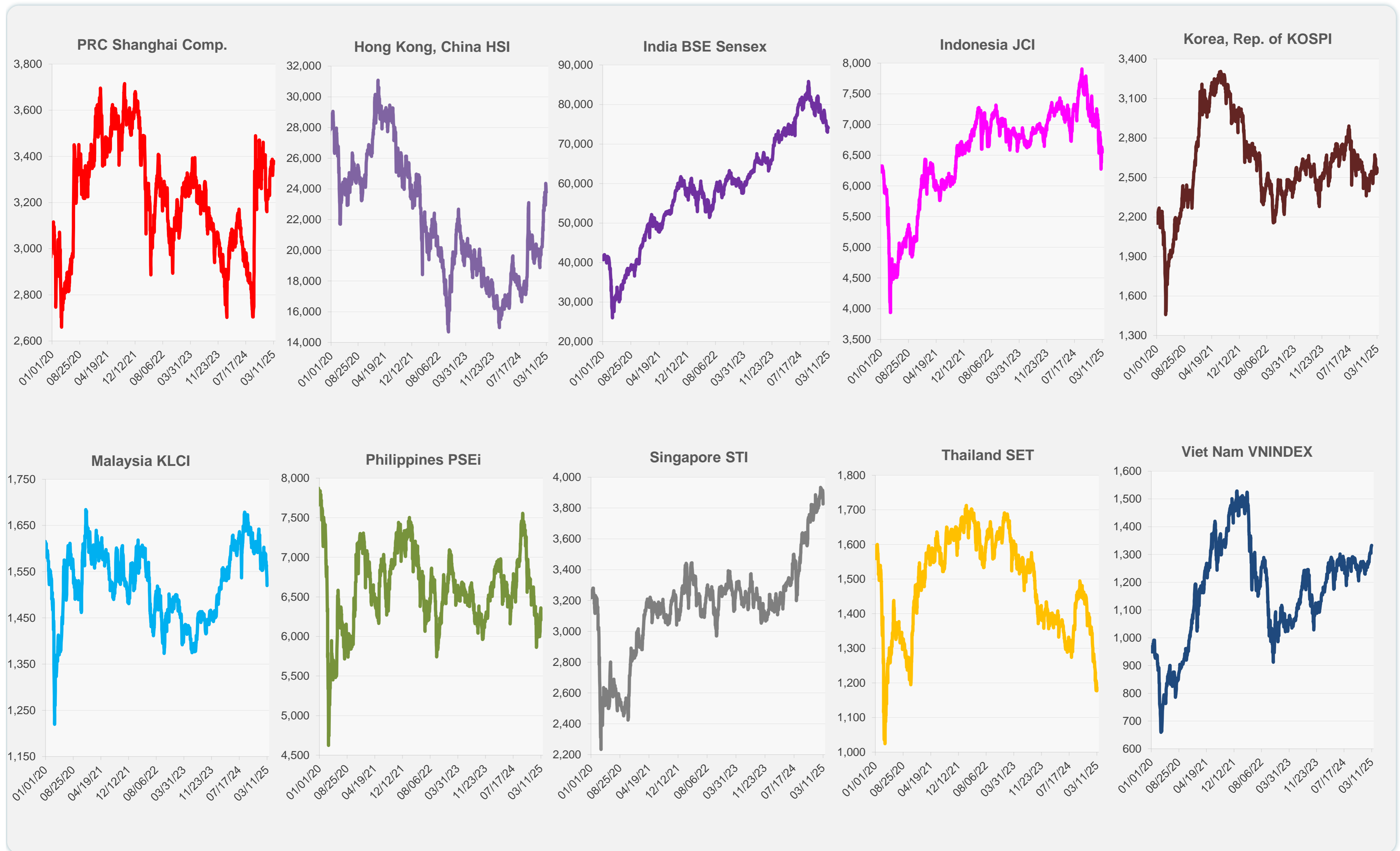
Source: Haver Analytics.

Daily Market Watch
STOCK INDEXES

	Latest Closing	% change from Previous Day	% change from 01-Jan-25
US Dow Jones Ind Avg	41,433.48	-1.14	-2.61
US NASDAQ	17,436.10	-0.18	-9.71
US S&P 500	5,572.07	-0.76	-5.26
UK FTSE 100	8,495.99	-1.21	3.95
EURO STOXX 50	5,309.90	-1.43	8.45
Japan NIKKEI 225	36,793.11	-0.64	-7.77
Bangladesh DSEX	5,199.30	0.16	-0.36
PRC Shanghai Comp.	3,379.83	0.41	0.84
Hong Kong, China HSI	23,782.14	-0.01	18.56
India BSE Sensex	74,102.32	-0.02	-5.61
Indonesia JCI	6,545.85	-0.79	-7.54
Korea, Rep. of KOSPI	2,537.60	-1.28	5.76
Malaysia KLCI	1,520.15	-1.06	-7.44
Pakistan KSE 100	114,177.65	-0.16	-2.42
Philippines PSEi	6,206.55	-2.42	-4.94
Singapore STI	3,825.83	-1.88	1.01
Sri Lanka CSEALL	15,710.57	-1.81	-1.47
Taipei, China TWSE	22,071.09	-1.73	-4.18
Thailand SET	1,187.63	0.87	-15.18
Viet Nam VNINDEX	1,332.54	0.17	5.19



Sources: ADB calculations using data from CEIC Data Company and Haver Analytics.



Sources: CEIC Data Company and Haver Analytics.

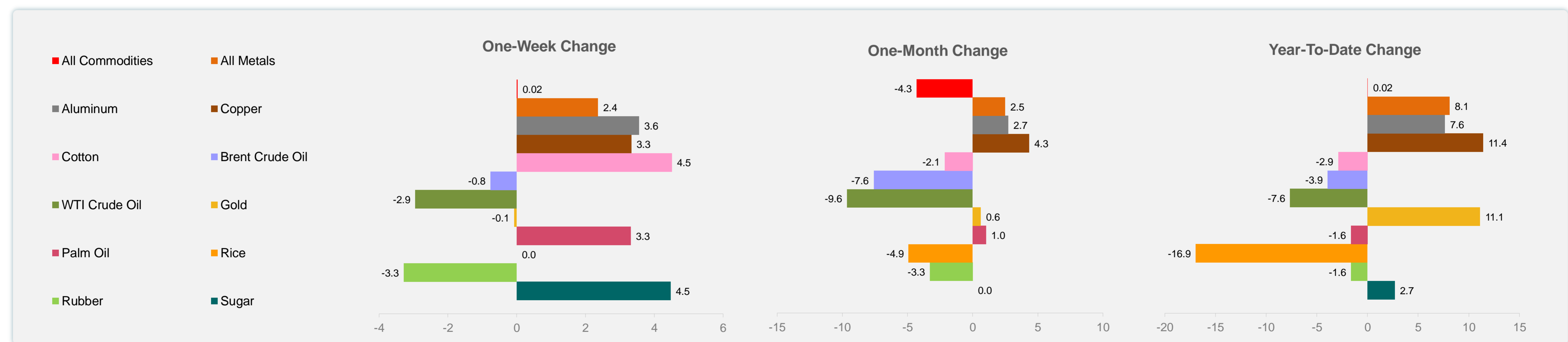
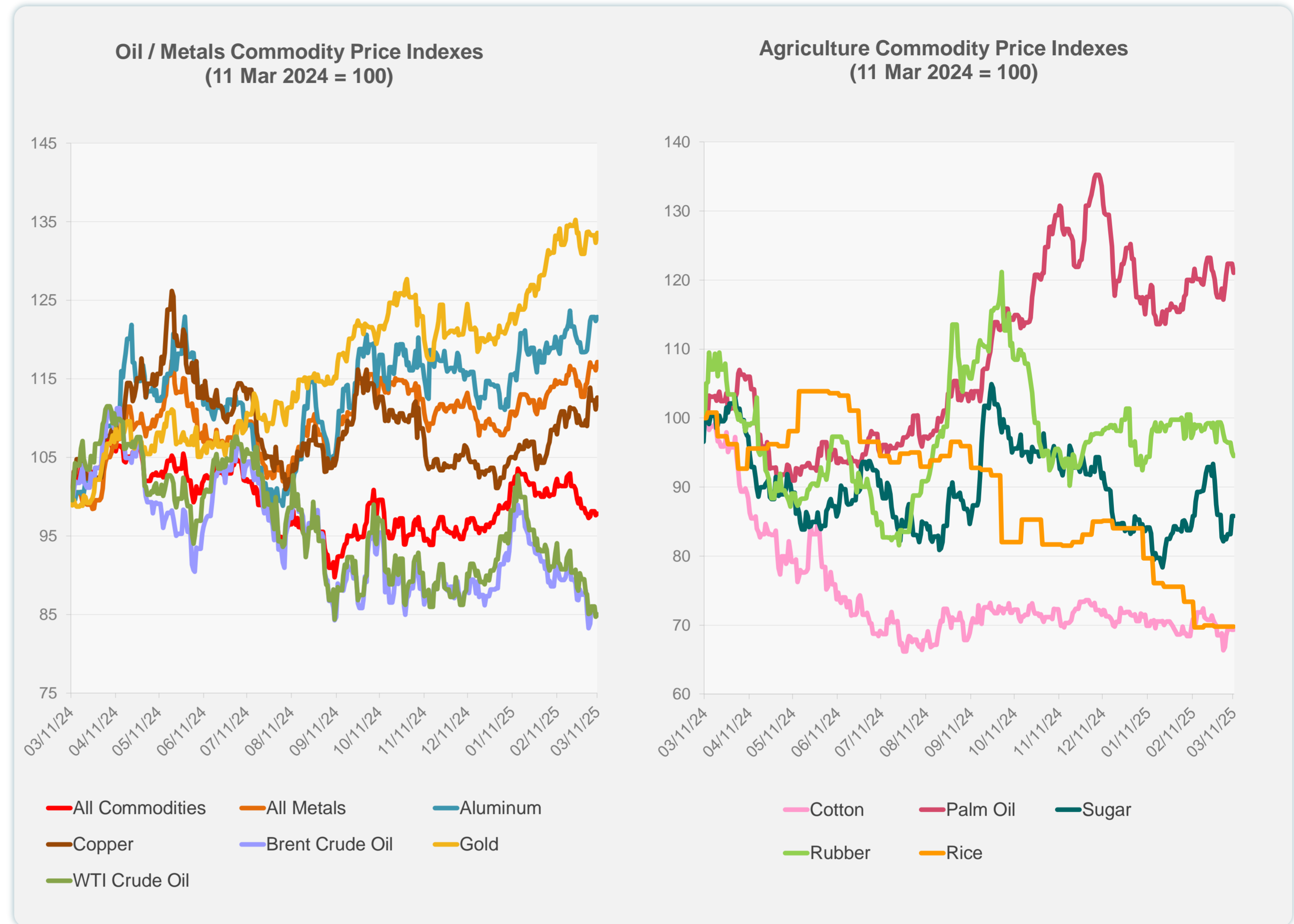
Daily Market Watch
COMMODITY PRICES

12 March 2025, 9:00 AM Manila

	Unit	Latest Closing	% change from Previous Day	% change from 01-Jan-25
S&P All Commodities	US\$	549.75	0.25	0.02
S&P All Metals	US\$	332.29	0.93	8.10
Aluminum	US\$/metric ton	2,719.92	0.40	7.64
Copper	US\$/metric ton	9,639.18	1.36	11.40
Cotton	US cents/lb	64.00	0.00	-2.88
Brent Crude Oil	US\$/barrel	71.20	0.13	-3.92
WTI Crude Oil	US\$/barrel	66.25	0.33	-7.63
Gold	US\$/troy oz	2,915.90	0.94	11.10
Palm Oil	US\$/metric tonne	1,082.23	-1.08	-1.63
Rice ¹	US\$/metric ton	446.00	0.00	-16.95
Rubber ²	US\$/kg	233.00	-0.64	-1.60
Sugar	US cents/lb	18.69	0.00	2.69

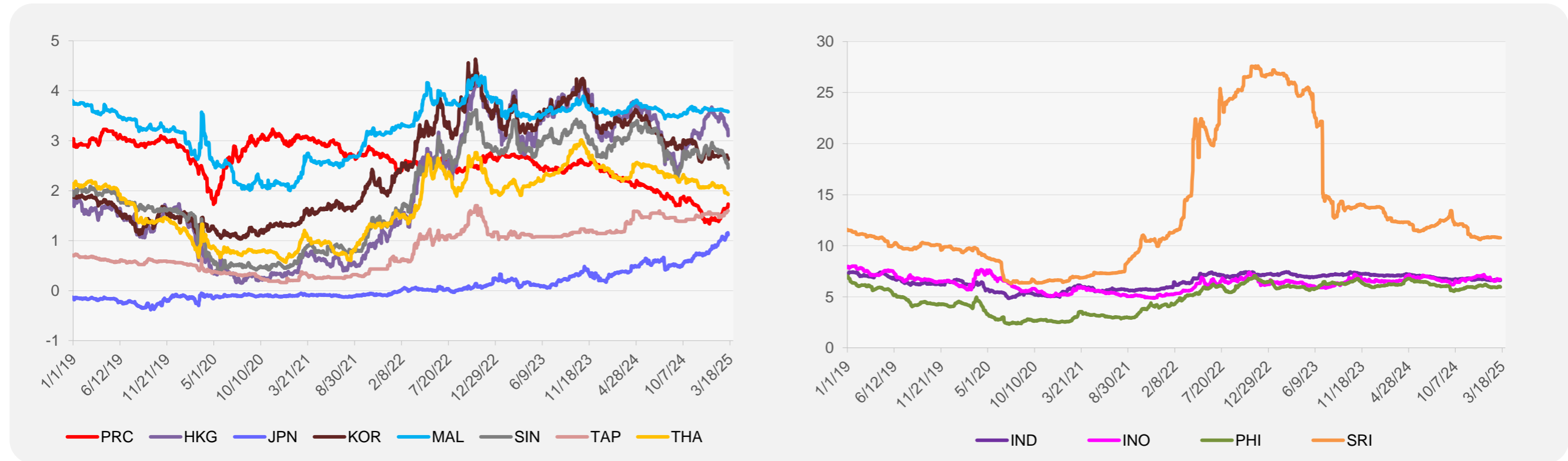
¹ Latest closing price from 26 February 2025.

² Singapore Exchange, Ribbed Smoked Sheet Rubber.

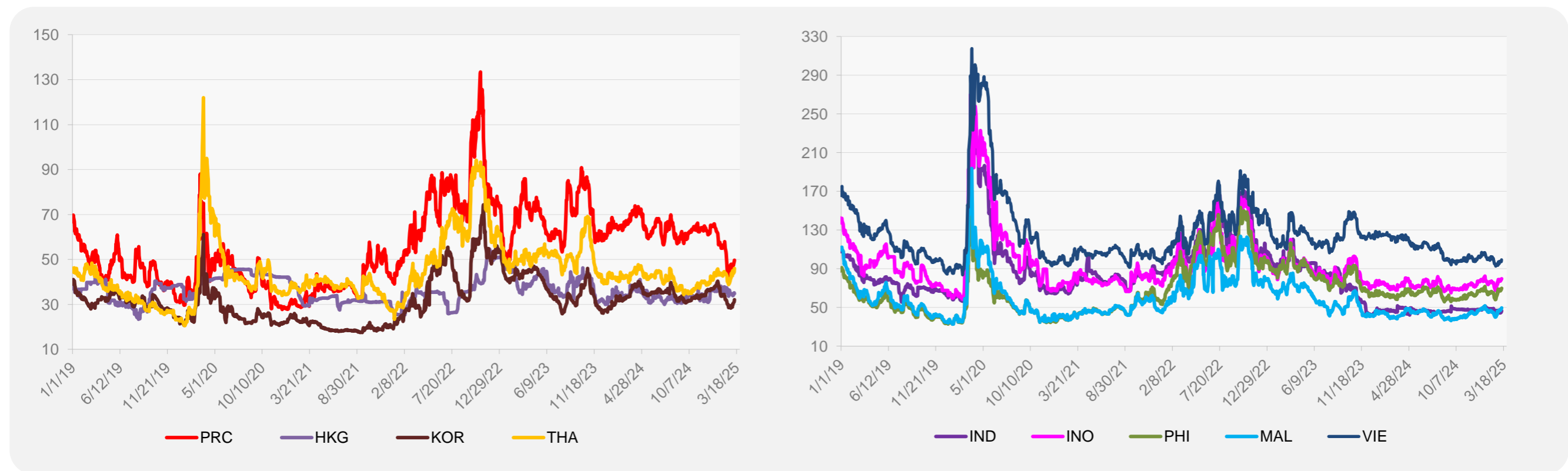


Source: ADB calculations using data from Bloomberg.

5-YEAR LOCAL CURRENCY GOVERNMENT BOND YIELDS (%)



5-YEAR CREDIT DEFAULT SWAP¹



¹ In USD and based on sovereign bonds.
Source: ADB calculations using data from Bloomberg.