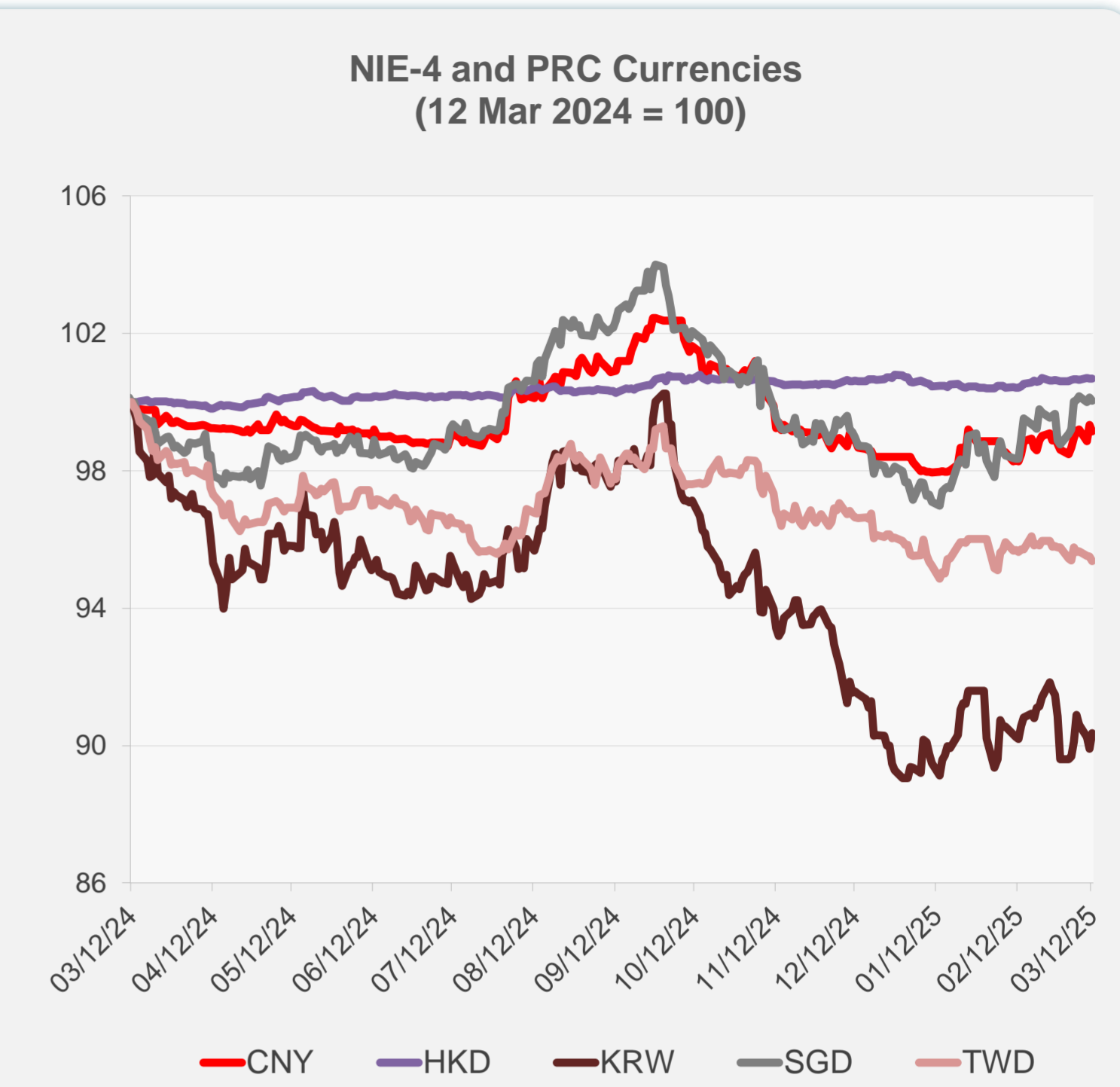
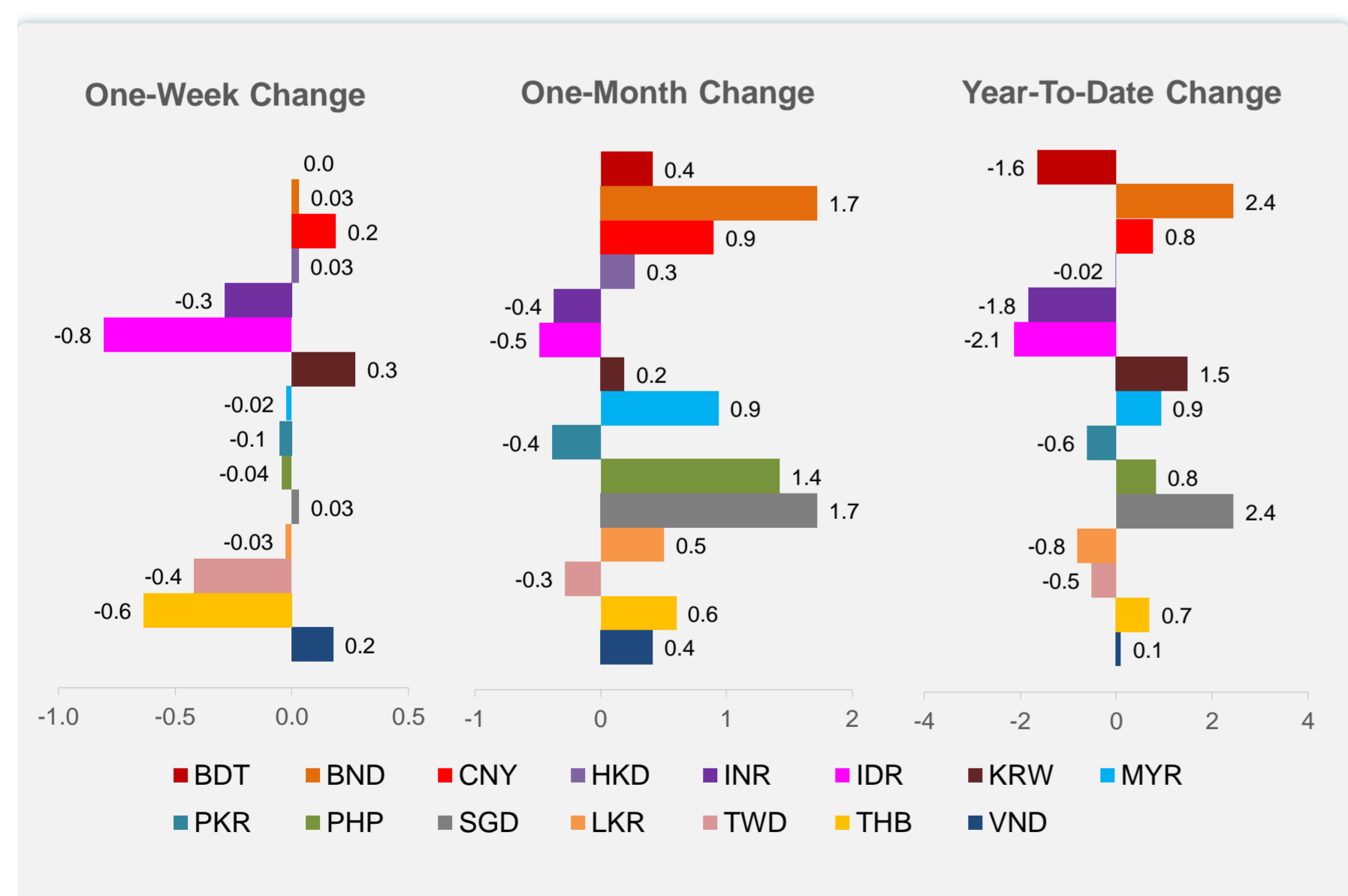
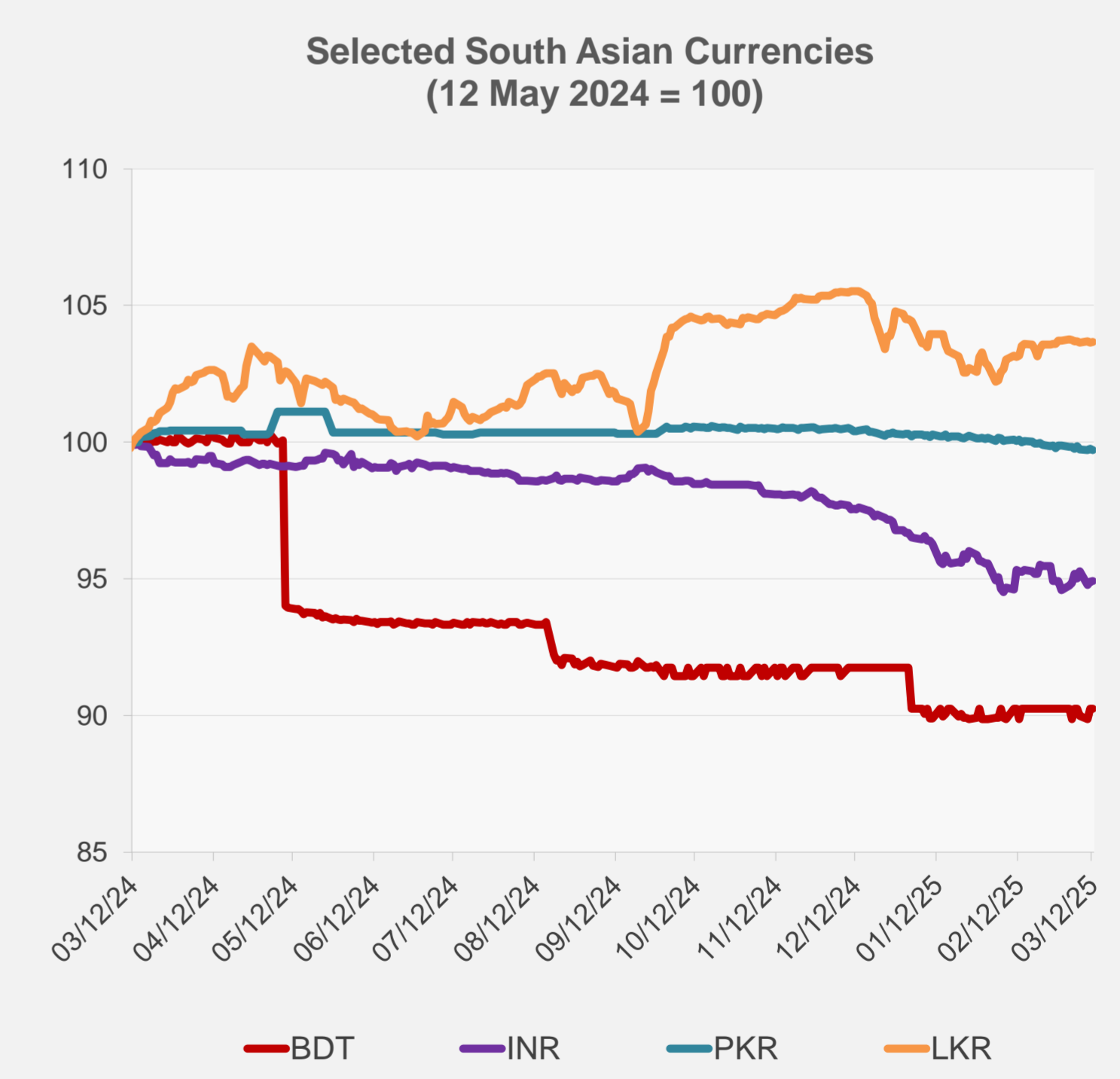
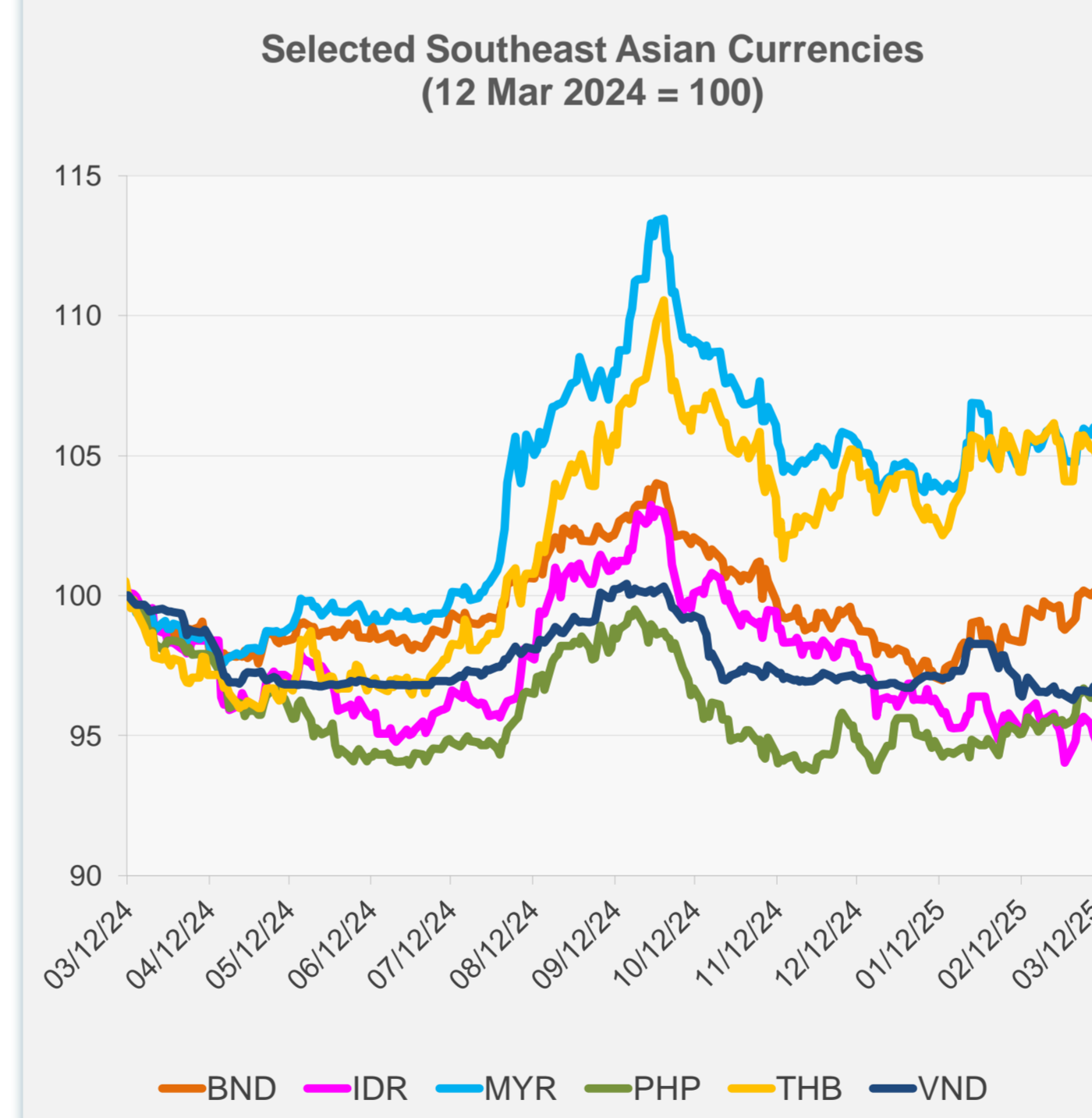


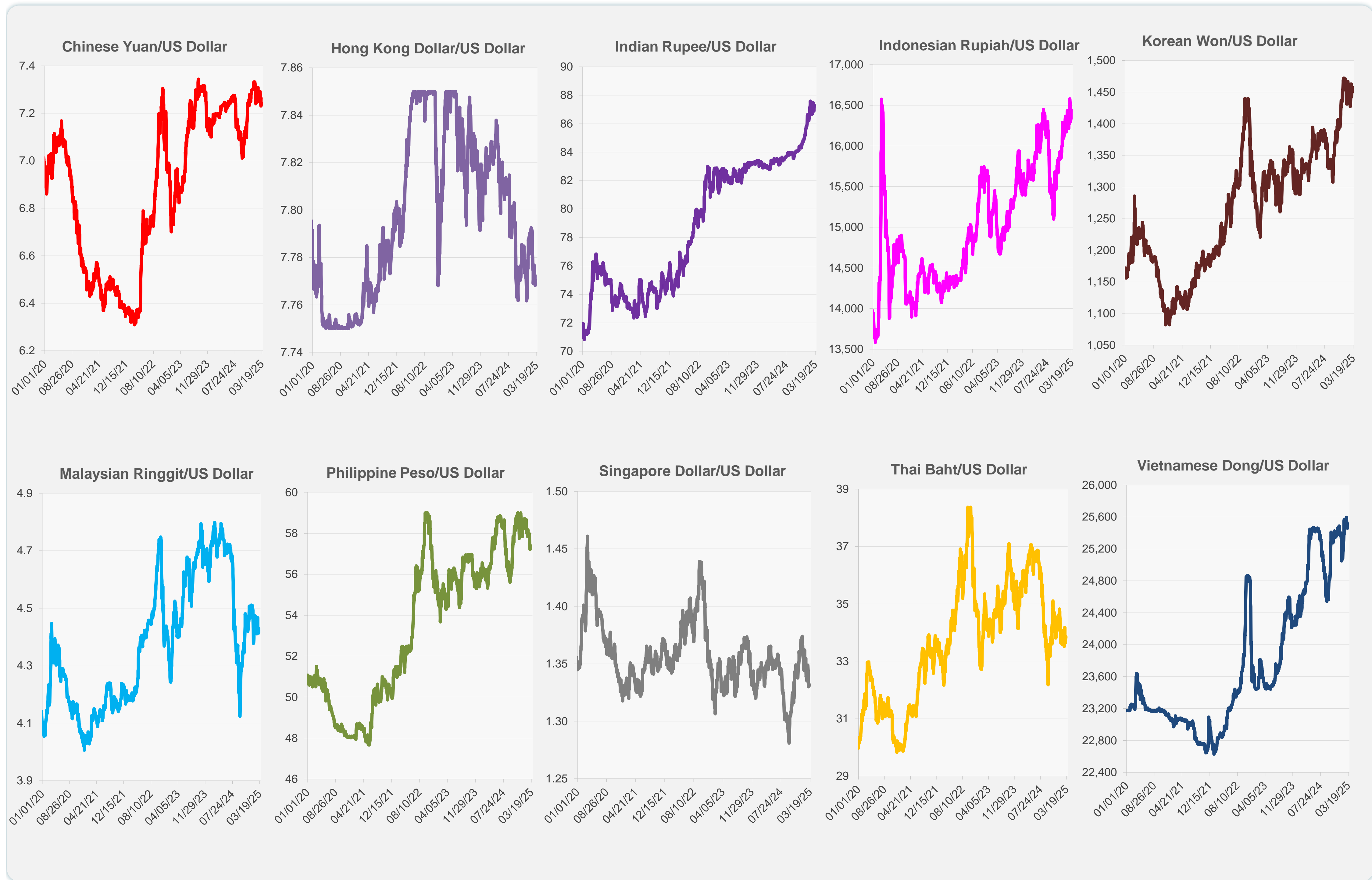
	Latest Closing	% change from Previous Day	% change from 01-Jan-25
Euro	0.92	-0.04	5.47
Japanese yen (JPY)	148.32	-0.56	5.96
Bangladeshi taka (BDT)	121.50	0.00	-1.65
Brunei dollar (BND)	1.33	-0.08	2.44
Chinese yuan (CNY)	7.24	-0.18	0.76
Hong Kong dollar (HKD)	7.77	0.01	-0.02
Indian rupee (INR)	87.21	0.01	-1.83
Indonesian rupiah (IDR)	16,445.00	-0.24	-2.13
Korean won (KRW)	1,450.65	0.51	1.48
Malaysian ringgit (MYR)	4.43	-0.39	0.93
Pakistan rupee (PKR)	280.08	-0.06	-0.61
Philippine peso (PHP)	57.38	-0.25	0.82
Singapore dollar (SGD)	1.33	-0.08	2.44
Sri Lanka rupee (LKR)	295.35	0.03	-0.80
Taipei,China NT dollar (TWD)	32.95	-0.15	-0.50
Thai baht (THB)	33.86	-0.15	0.69
Vietnamese dong (VND)	25,460.00	0.04	0.10



NIE = Newly Industrialized Economies



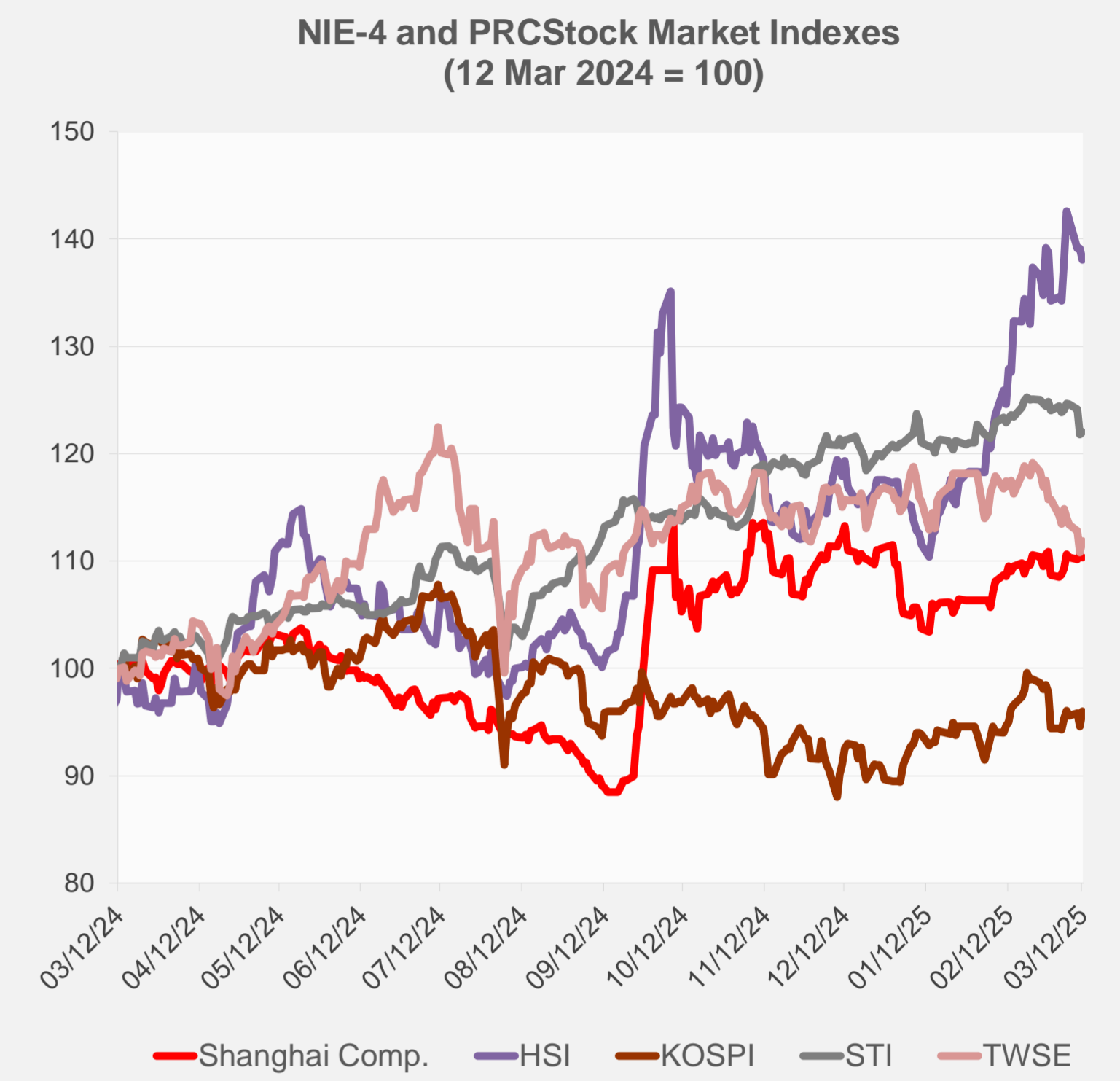
Note: Negative/Decreasing values indicate depreciation of local currency, and positive/increasing values indicate appreciation.
Source: ADB calculations using data from Haver Analytics.



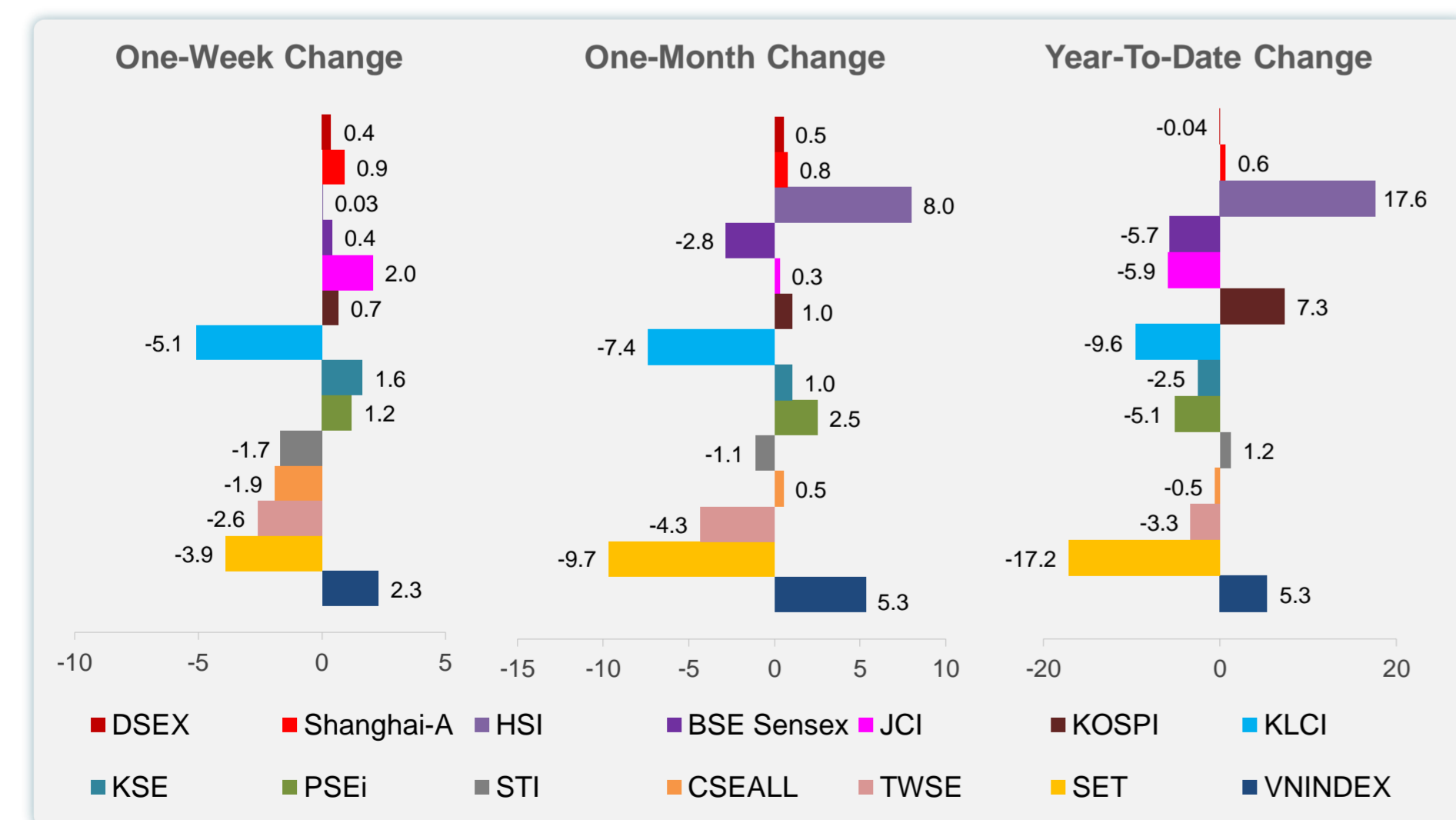
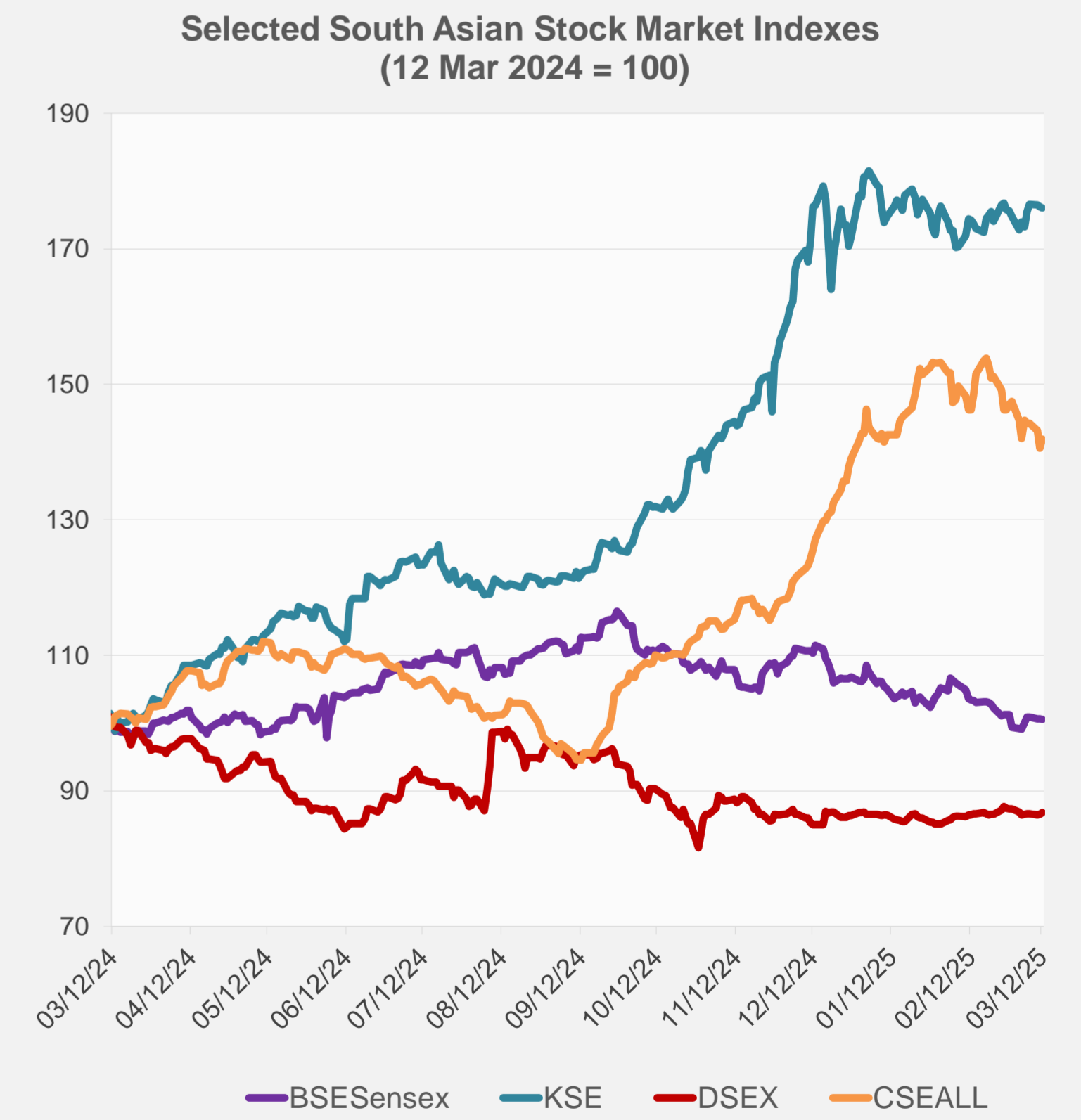
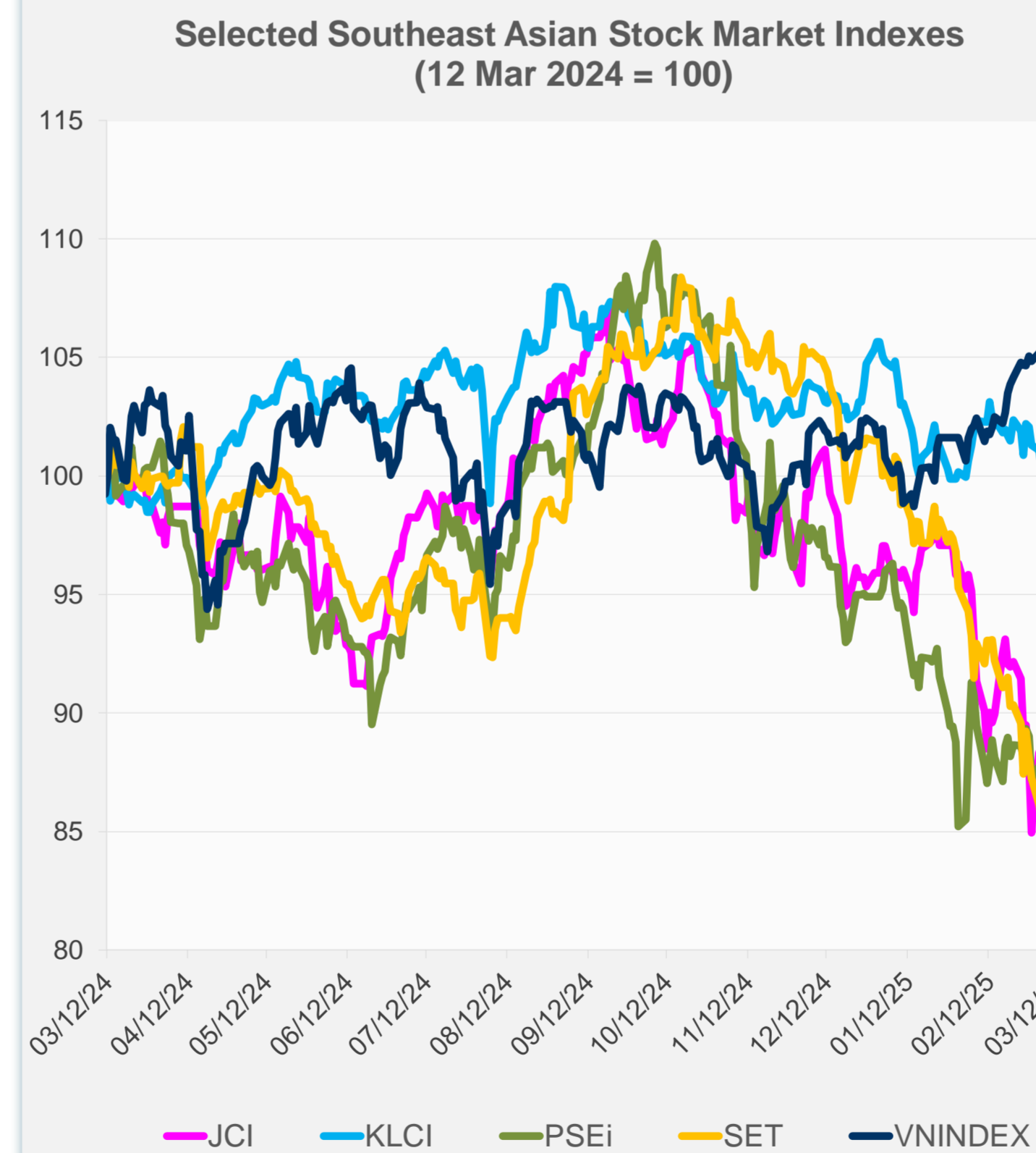
Source: Haver Analytics.

Daily Market Watch
STOCK INDEXES

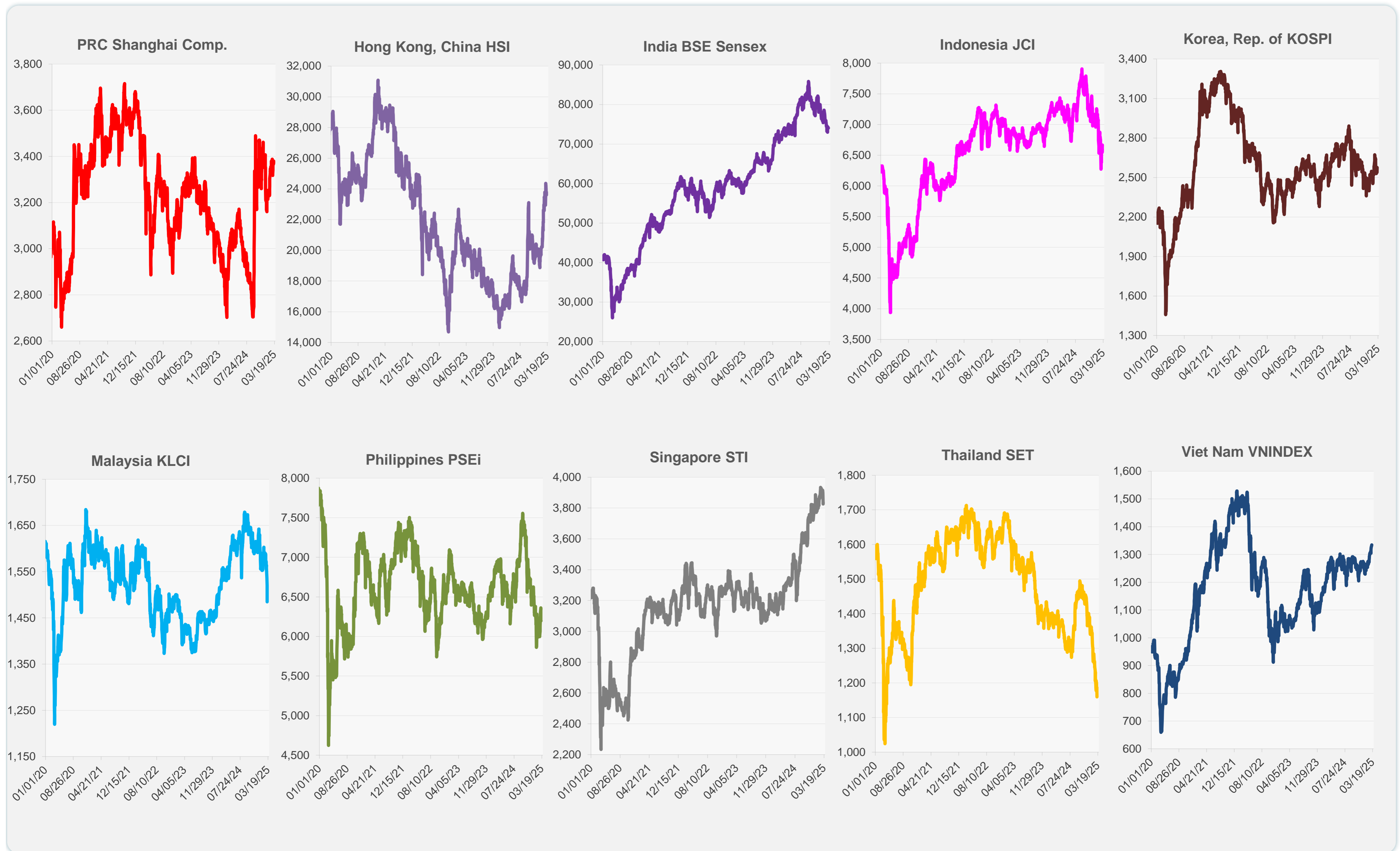
	Latest Closing	% change from Previous Day	% change from 01-Jan-25
US Dow Jones Ind Avg	41,350.93	-0.20	-2.80
US NASDAQ	17,648.45	1.22	-8.61
US S&P 500	5,599.30	0.49	-4.80
UK FTSE 100	8,540.97	0.53	4.50
EURO STOXX 50	5,359.42	0.93	9.47
Japan NIKKEI 225	36,819.09	0.07	-7.71
Bangladesh DSEX	5,216.07	0.32	-0.04
PRC Shanghai Comp.	3,371.92	-0.23	0.60
Hong Kong, China HSI	23,600.31	-0.76	17.65
India BSE Sensex	74,029.76	-0.10	-5.70
Indonesia JCI	6,665.05	1.82	-5.86
Korea, Rep. of KOSPI	2,574.82	1.47	7.31
Malaysia KLCI	1,484.83	-2.32	-9.59
Pakistan KSE 100	114,084.53	-0.08	-2.50
Philippines PSEi	6,195.26	-0.18	-5.11
Singapore STI	3,833.07	0.19	1.20
Sri Lanka CSEALL	15,861.14	0.96	-0.52
Taipei, China TWSE	22,278.36	0.94	-3.29
Thailand SET	1,160.06	-2.32	-17.15
Viet Nam VNINDEX	1,334.41	0.14	5.34



NIE = Newly Industrialized Economies



Sources: ADB calculations using data from CEIC Data Company and Haver Analytics.

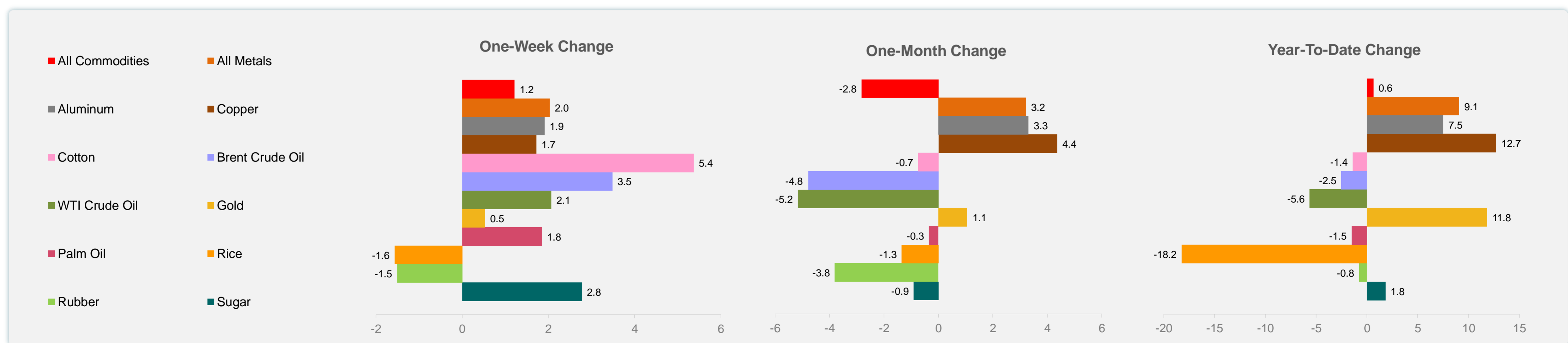
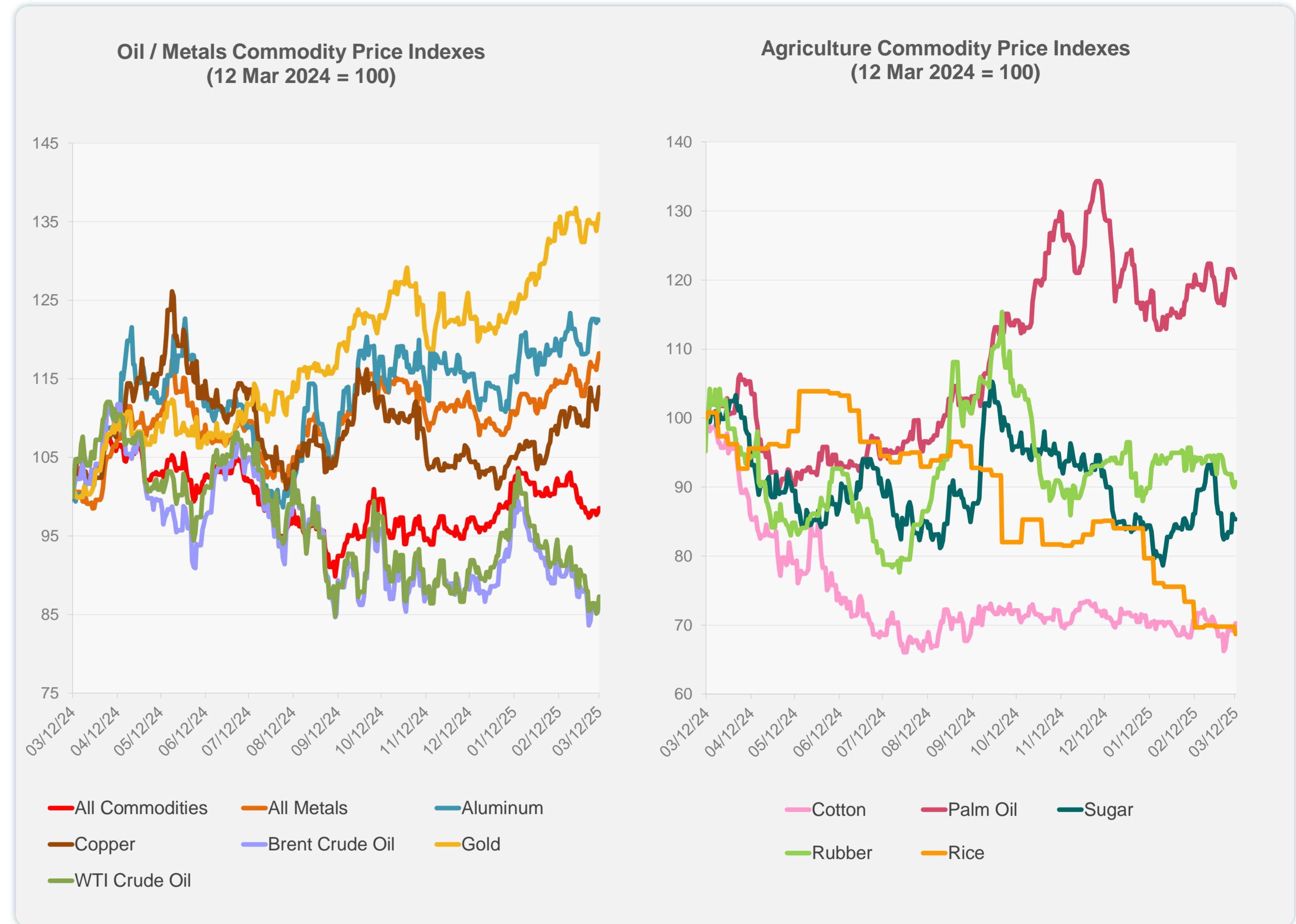


Sources: CEIC Data Company and Haver Analytics.

	Unit	Latest Closing	% change from Previous Day	% change from 01-Jan-25
S&P All Commodities	US\$	553.08	0.61	0.63
S&P All Metals	US\$	335.23	0.89	9.06
Aluminum	US\$/metric ton	2,716.72	-0.12	7.52
Copper	US\$/metric ton	9,751.60	1.17	12.70
Cotton	US cents/lb	64.98	1.53	-1.40
Brent Crude Oil	US\$/barrel	72.25	1.47	-2.51
WTI Crude Oil	US\$/barrel	67.68	2.16	-5.63
Gold	US\$/troy oz	2,934.77	0.65	11.82
Palm Oil	US\$/metric tonne	1,083.56	-0.30	-1.51
Rice ¹	US\$/metric ton	439.00	-1.57	-18.25
Rubber ²	US\$/kg	235.00	0.86	-0.76
Sugar	US cents/lb	18.53	0.00	1.81

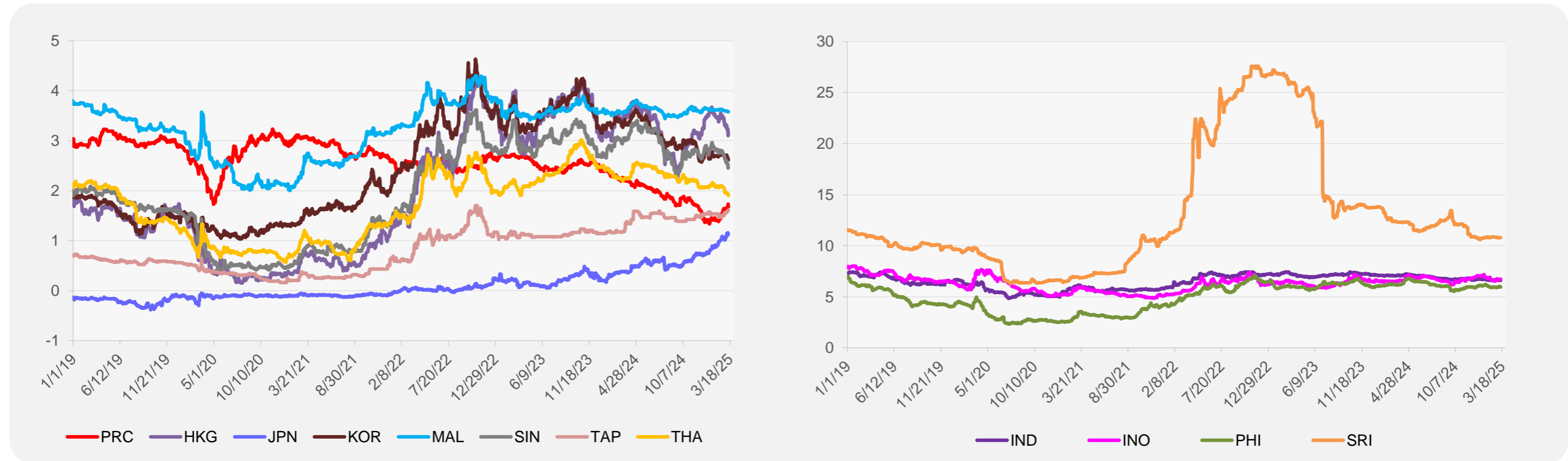
¹ Latest closing price from 26 February 2025.

² Singapore Exchange, Ribbed Smoked Sheet Rubber.

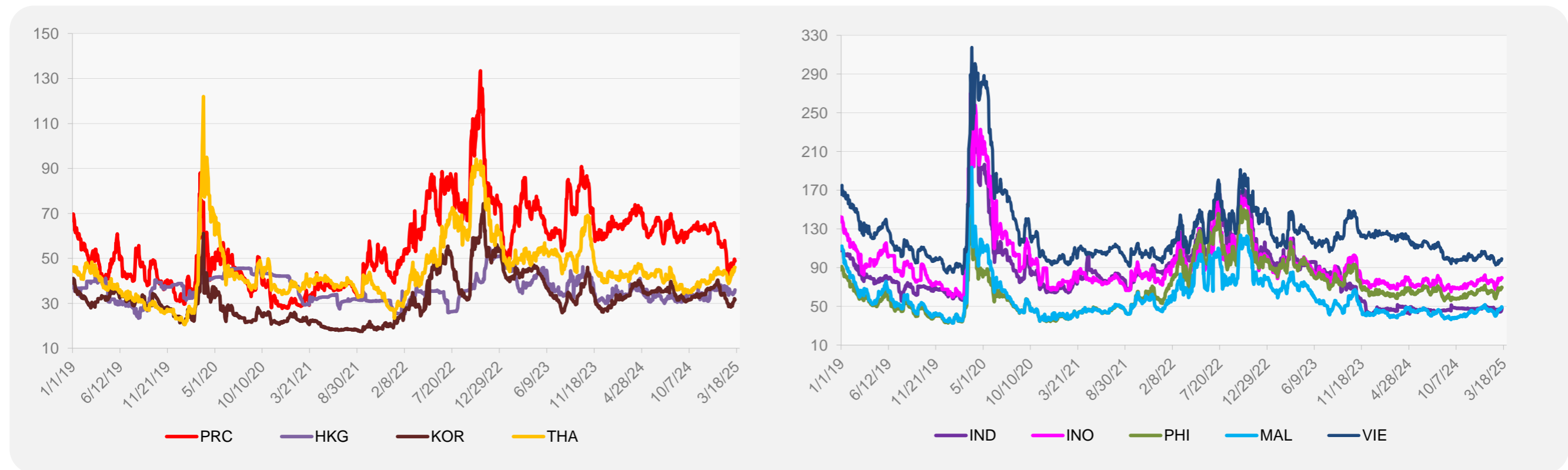


Source: ADB calculations using data from Bloomberg.

5-YEAR LOCAL CURRENCY GOVERNMENT BOND YIELDS (%)



5-YEAR CREDIT DEFAULT SWAP¹



¹ In USD and based on sovereign bonds.
Source: ADB calculations using data from Bloomberg.