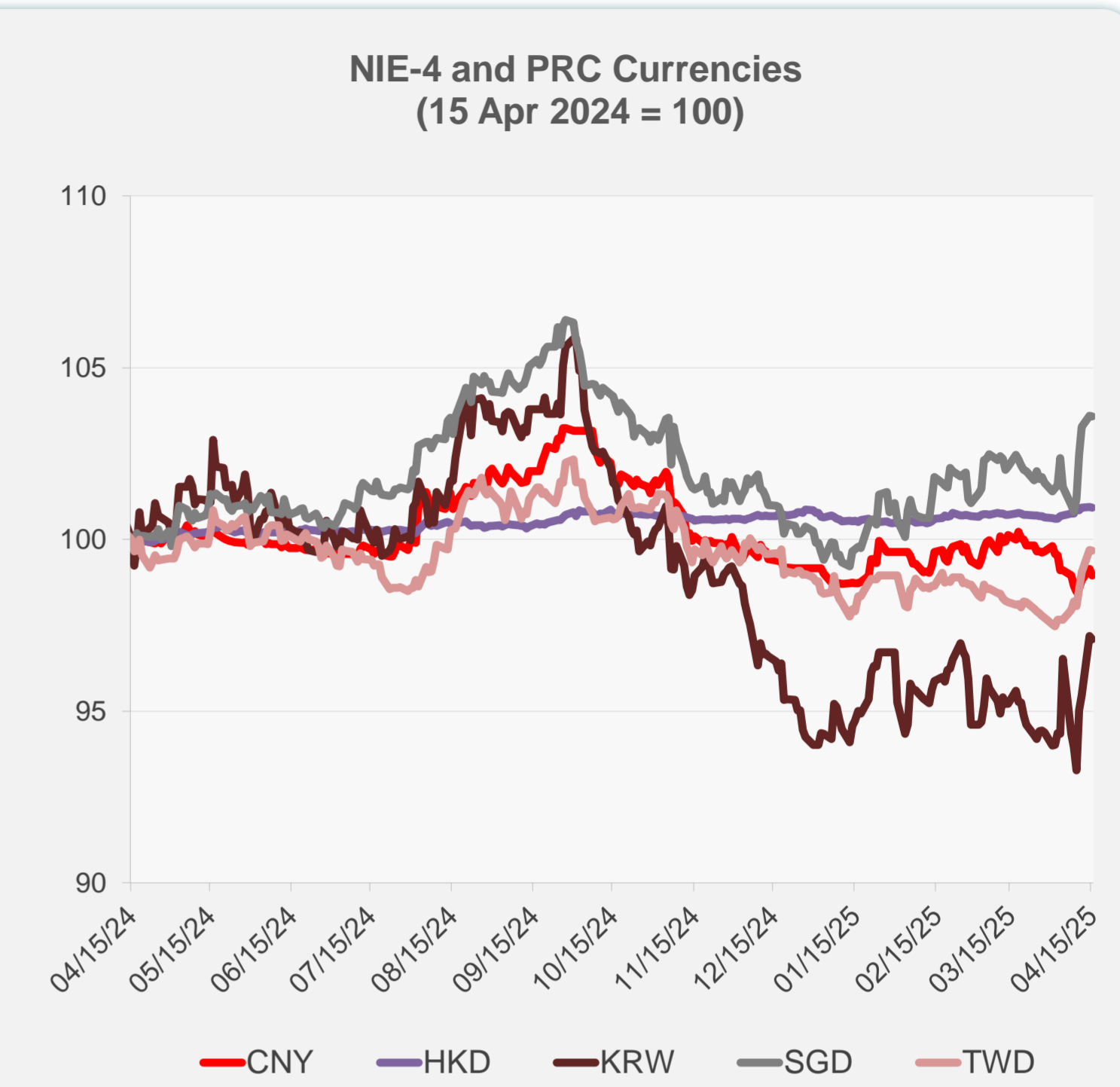
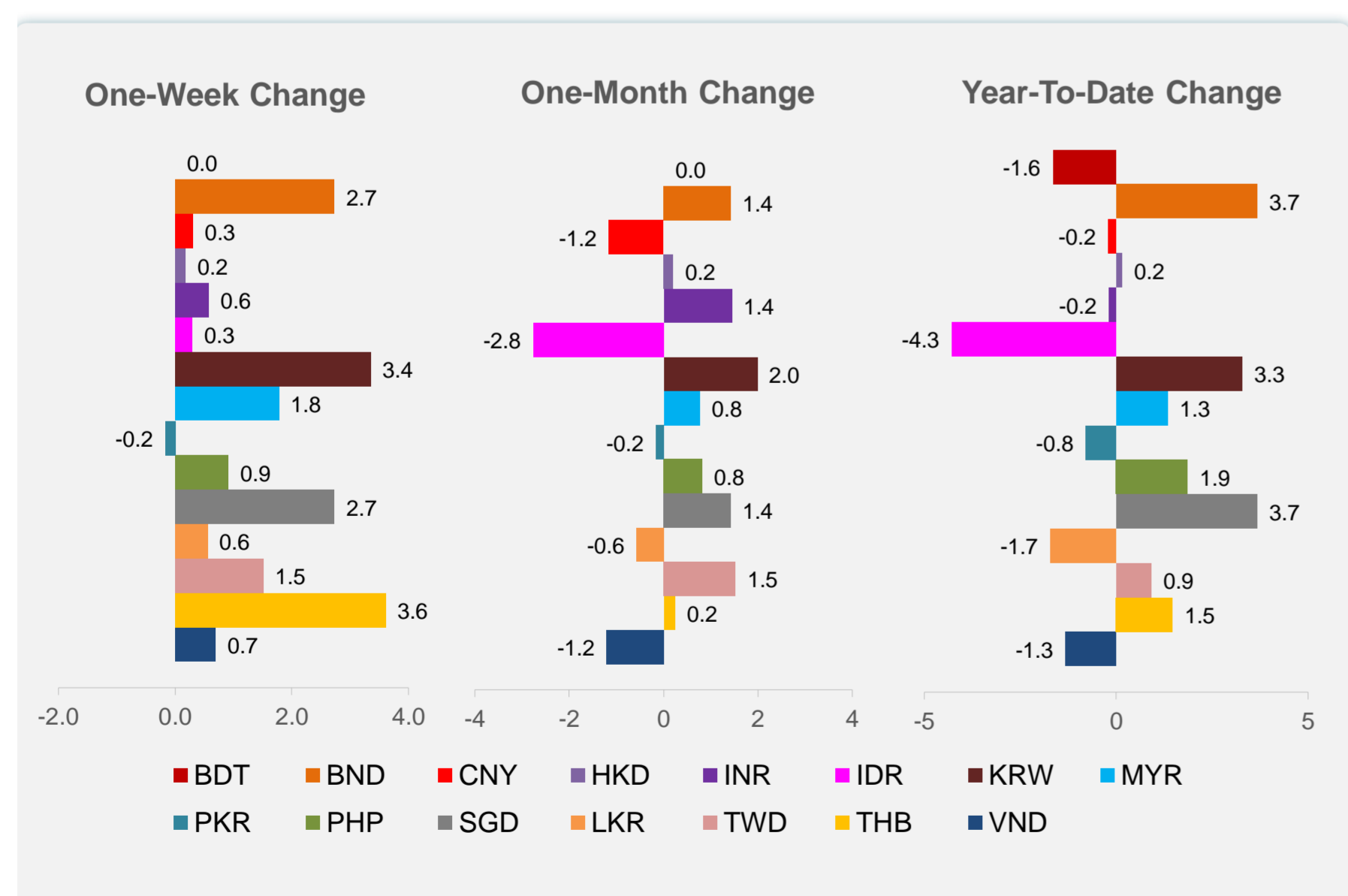
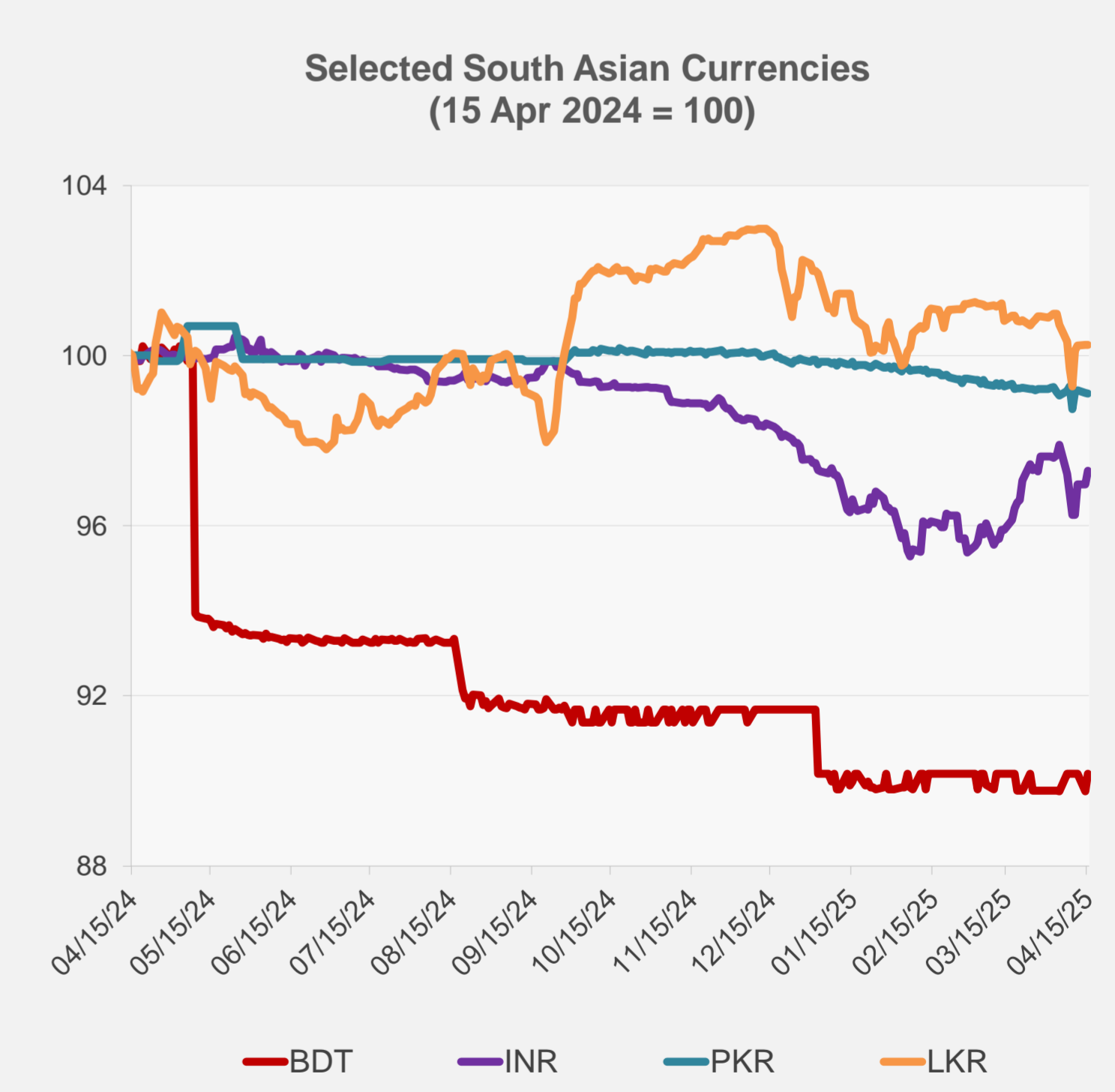
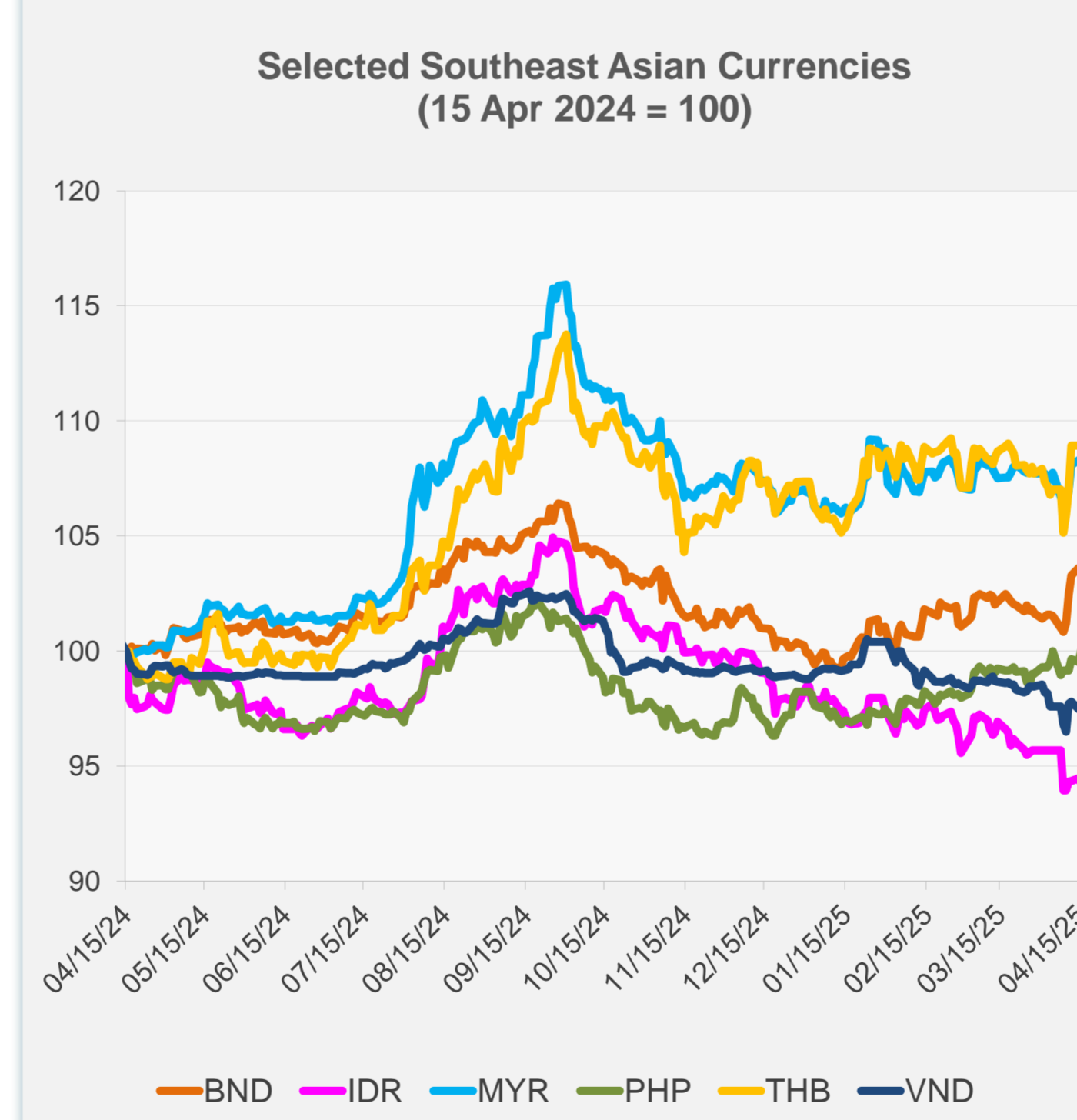


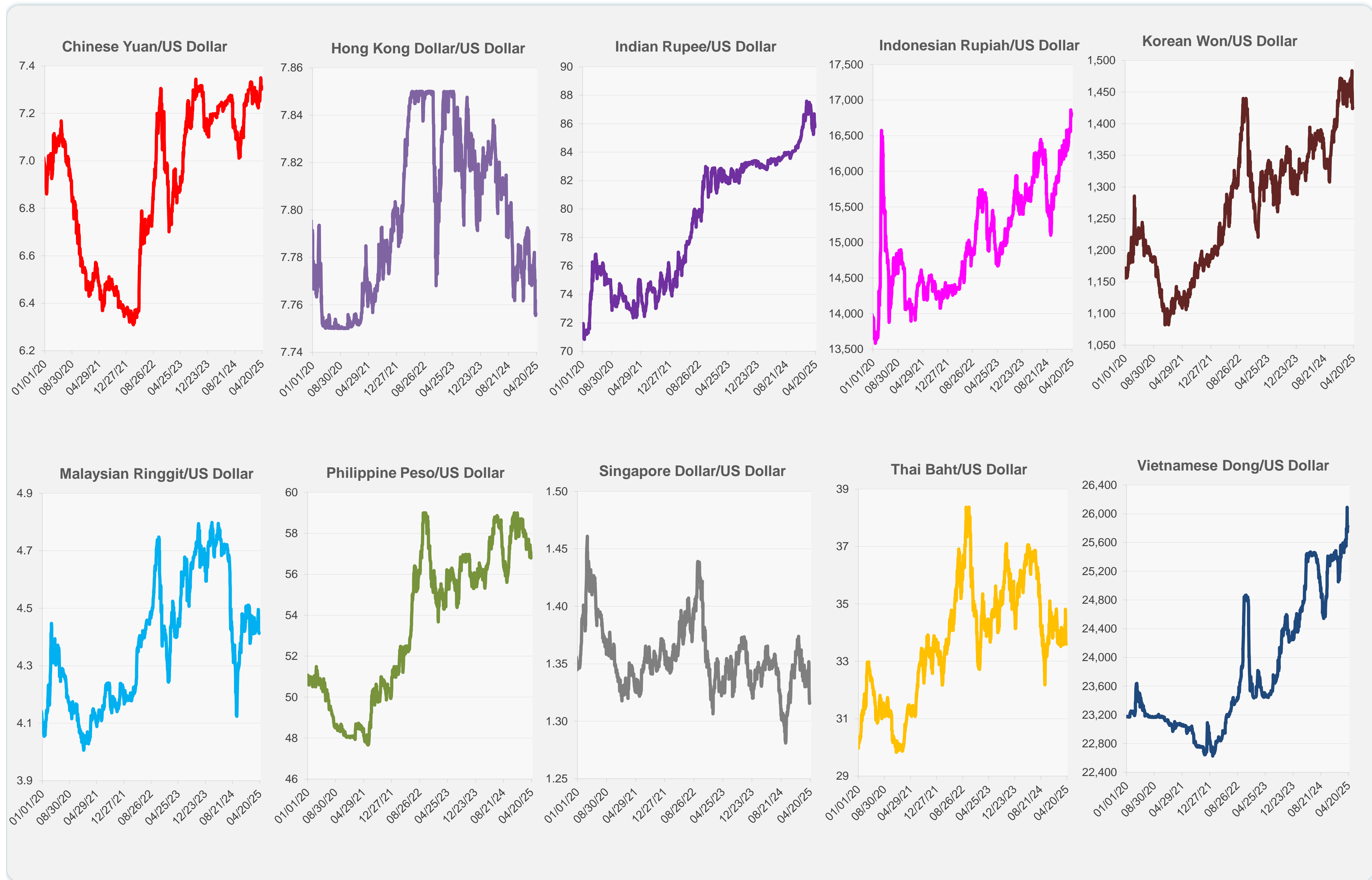
	Latest Closing	% change from Previous Day	% change from 01-Jan-25
Euro	0.88	-0.35	9.39
Japanese yen (JPY)	142.73	0.39	10.11
Bangladeshi taka (BDT)	121.50	0.47	-1.65
Brunei dollar (BND)	1.32	-0.03	3.67
Chinese yuan (CNY)	7.31	-0.18	-0.20
Hong Kong dollar (HKD)	7.76	-0.01	0.15
Indian rupee (INR)	85.77	0.33	-0.18
Indonesian rupiah (IDR)	16,815.00	-0.24	-4.28
Korean won (KRW)	1,425.40	-0.10	3.28
Malaysian ringgit (MYR)	4.41	0.03	1.34
Pakistan rupee (PKR)	280.58	-0.01	-0.78
Philippine peso (PHP)	56.79	0.53	1.86
Singapore dollar (SGD)	1.32	-0.03	3.67
Sri Lanka rupee (LKR)	298.10	0.00	-1.71
Taipei,China NT dollar (TWD)	32.49	-0.02	0.91
Thai baht (THB)	33.60	0.00	1.47
Vietnamese dong (VND)	25,825.00	0.00	-1.32



NIE = Newly Industrialized Economies



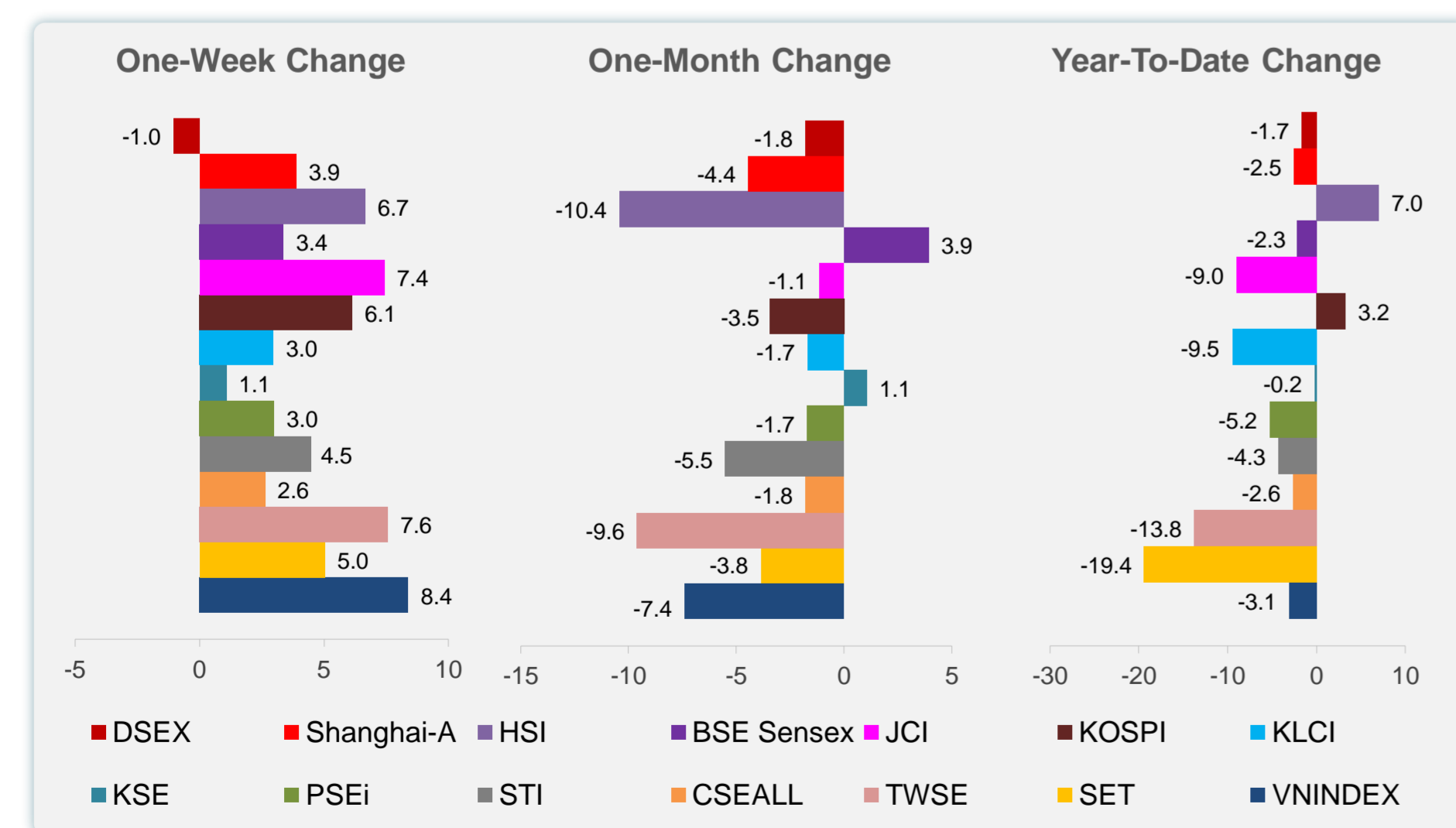
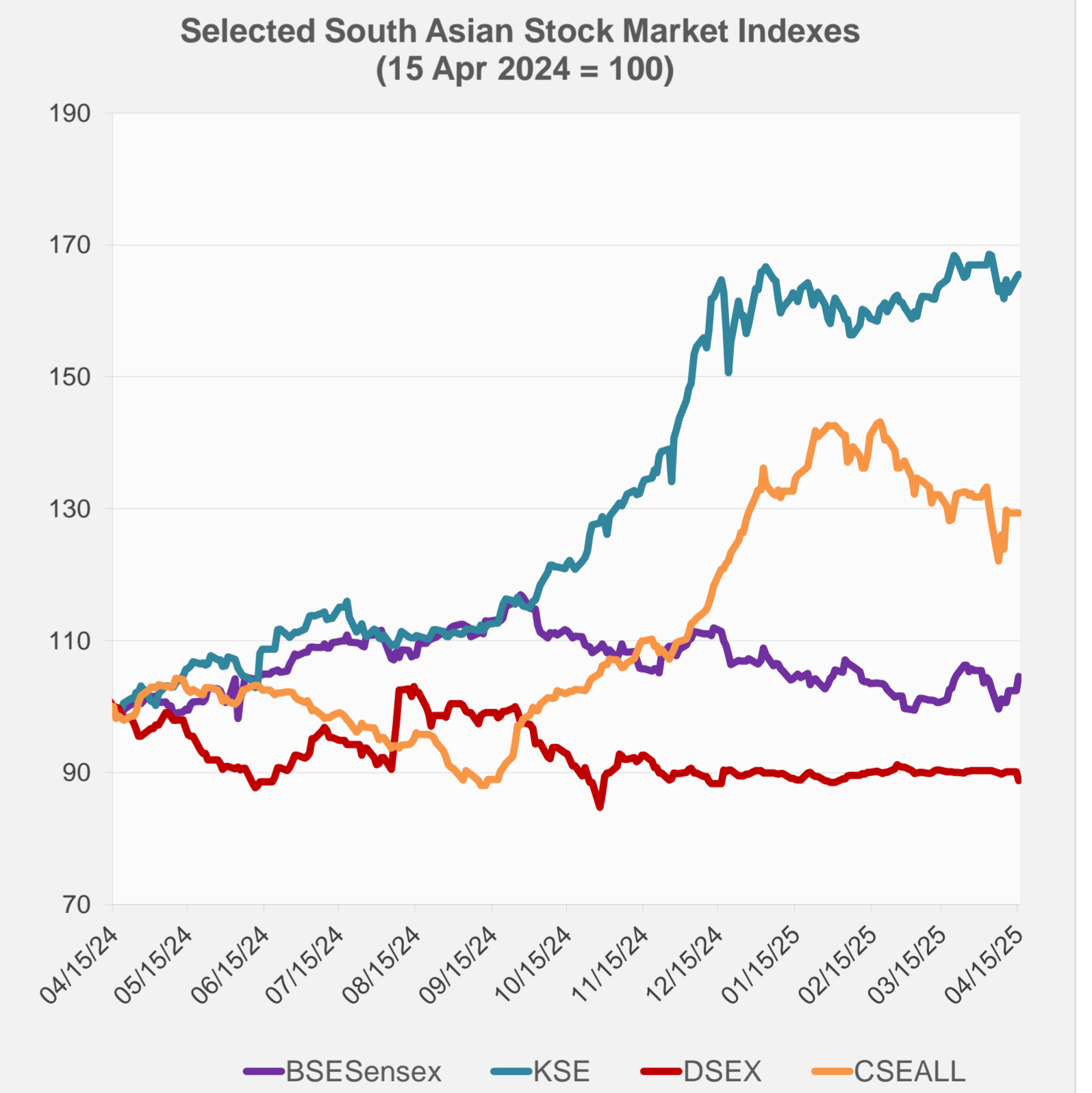
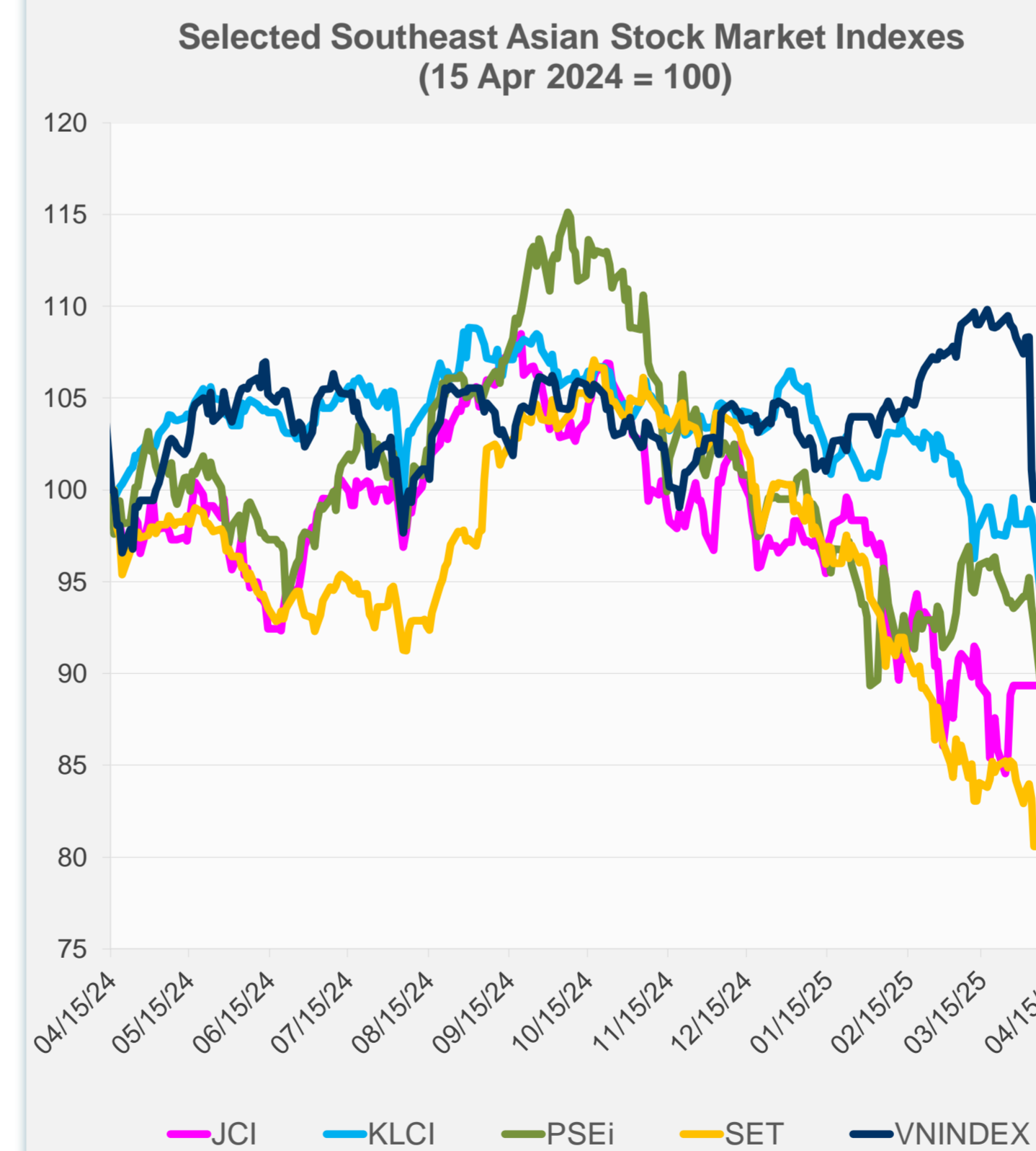
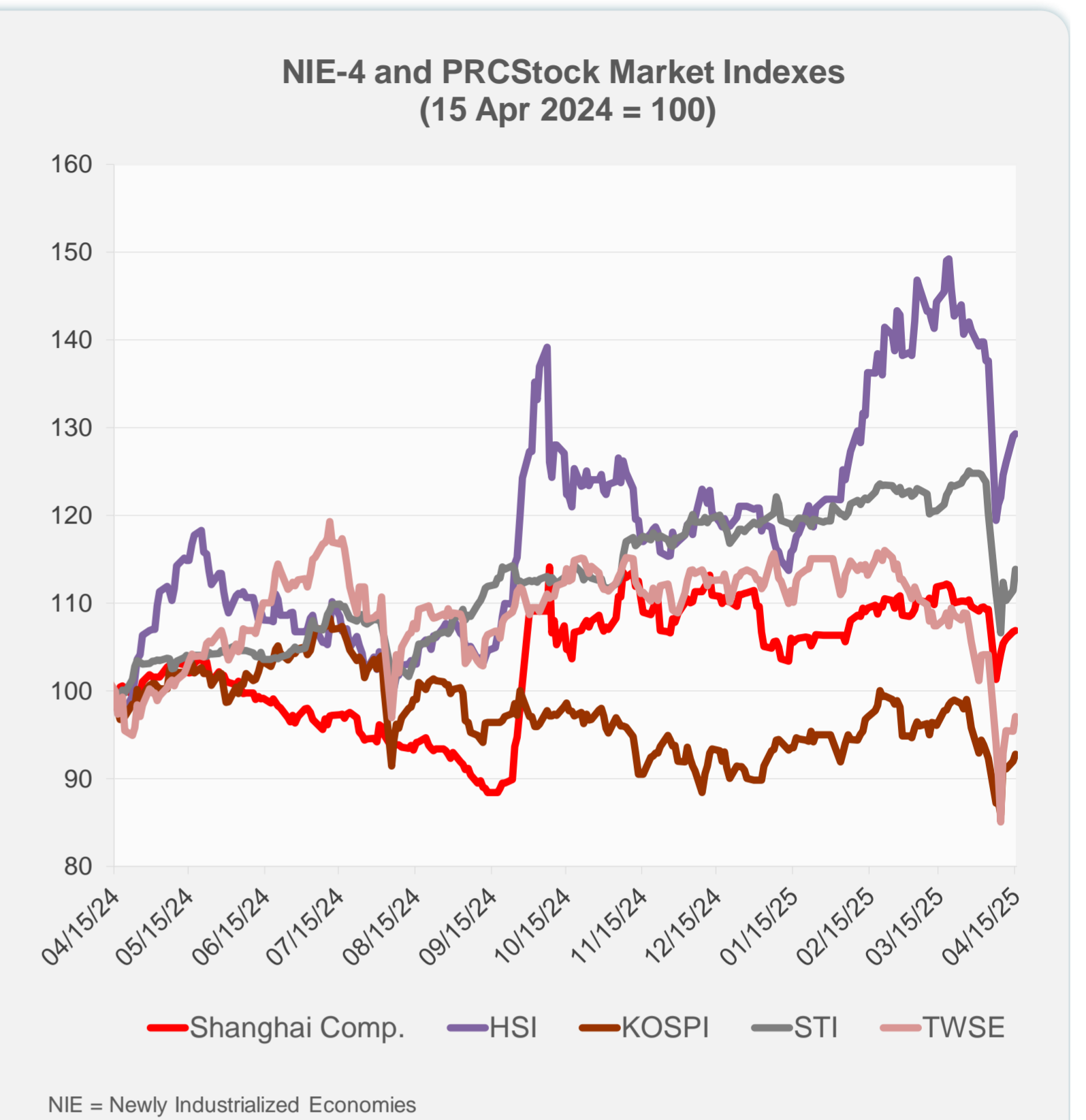
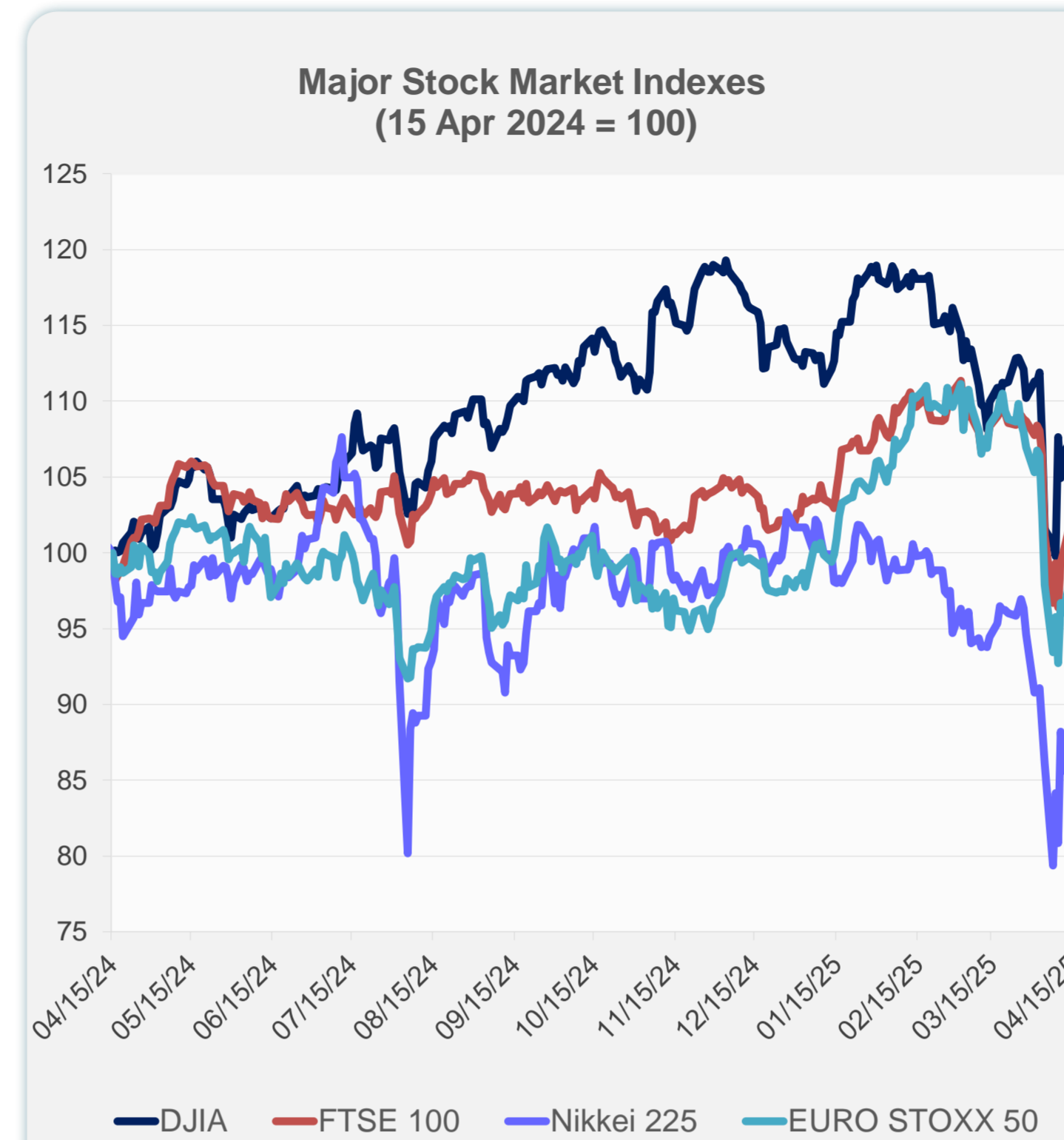
Note: Negative/Decreasing values indicate depreciation of local currency, and positive/increasing values indicate appreciation.
Source: ADB calculations using data from Haver Analytics.



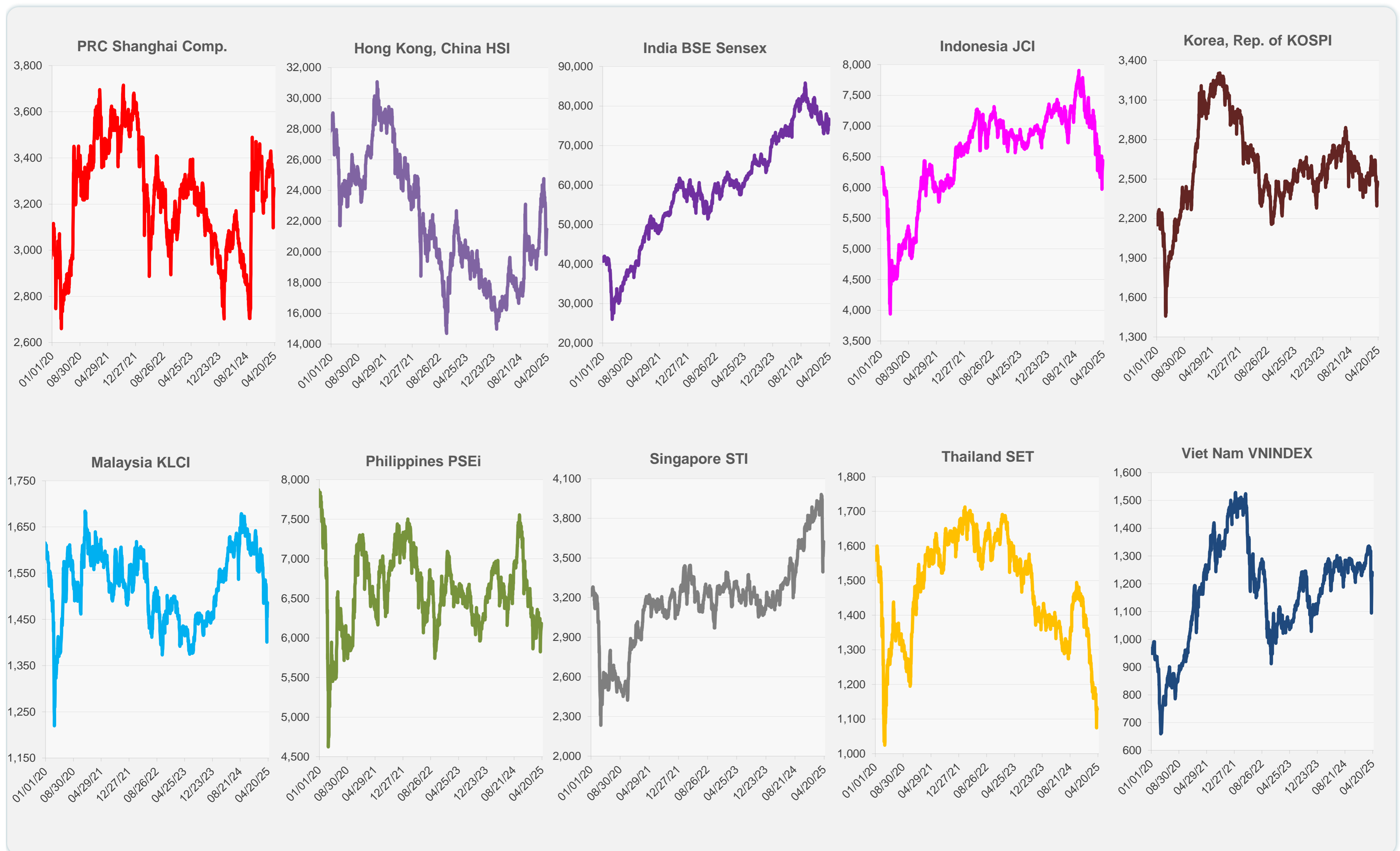
Source: Haver Analytics.

Daily Market Watch
STOCK INDEXES

	Latest Closing	% change from Previous Day	% change from 01-Jan-25
US Dow Jones Ind Avg	40,368.96	-0.38	-5.11
US NASDAQ	16,823.17	-0.05	-12.88
US S&P 500	5,396.63	-0.17	-8.25
UK FTSE 100	8,249.12	1.41	0.93
EURO STOXX 50	4,970.43	1.20	1.52
Japan NIKKEI 225	34,267.54	0.84	-14.10
Bangladesh DSEX	5,132.02	-1.41	-1.65
PRC Shanghai Comp.	3,267.66	0.15	-2.51
Hong Kong, China HSI	21,466.27	0.23	7.01
India BSE Sensex	76,734.89	2.10	-2.26
Indonesia JCI	6,441.68	1.15	-9.01
Korea, Rep. of KOSPI	2,477.41	0.88	3.25
Malaysia KLCI	1,486.43	0.38	-9.49
Pakistan KSE 100	116,775.50	0.33	-0.20
Philippines PSEi	6,186.10	0.66	-5.25
Singapore STI	3,624.72	2.14	-4.30
Sri Lanka CSEALL	15,526.20	0.00	-2.62
Taipei, China TWSE	19,857.67	1.77	-13.79
Thailand SET	1,128.66	0.00	-19.39
Viet Nam VNINDEX	1,227.79	-1.10	-3.08



Sources: ADB calculations using data from CEIC Data Company and Haver Analytics.

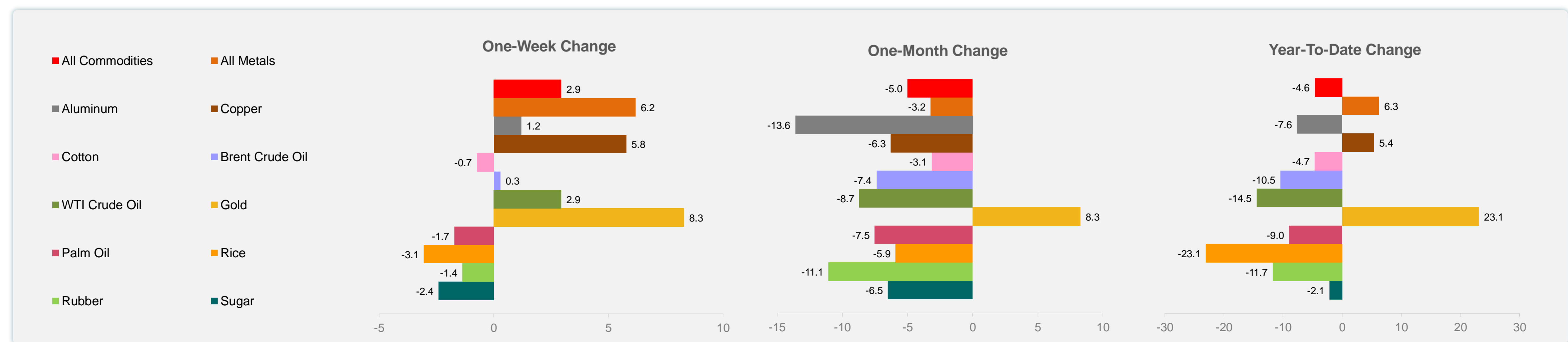
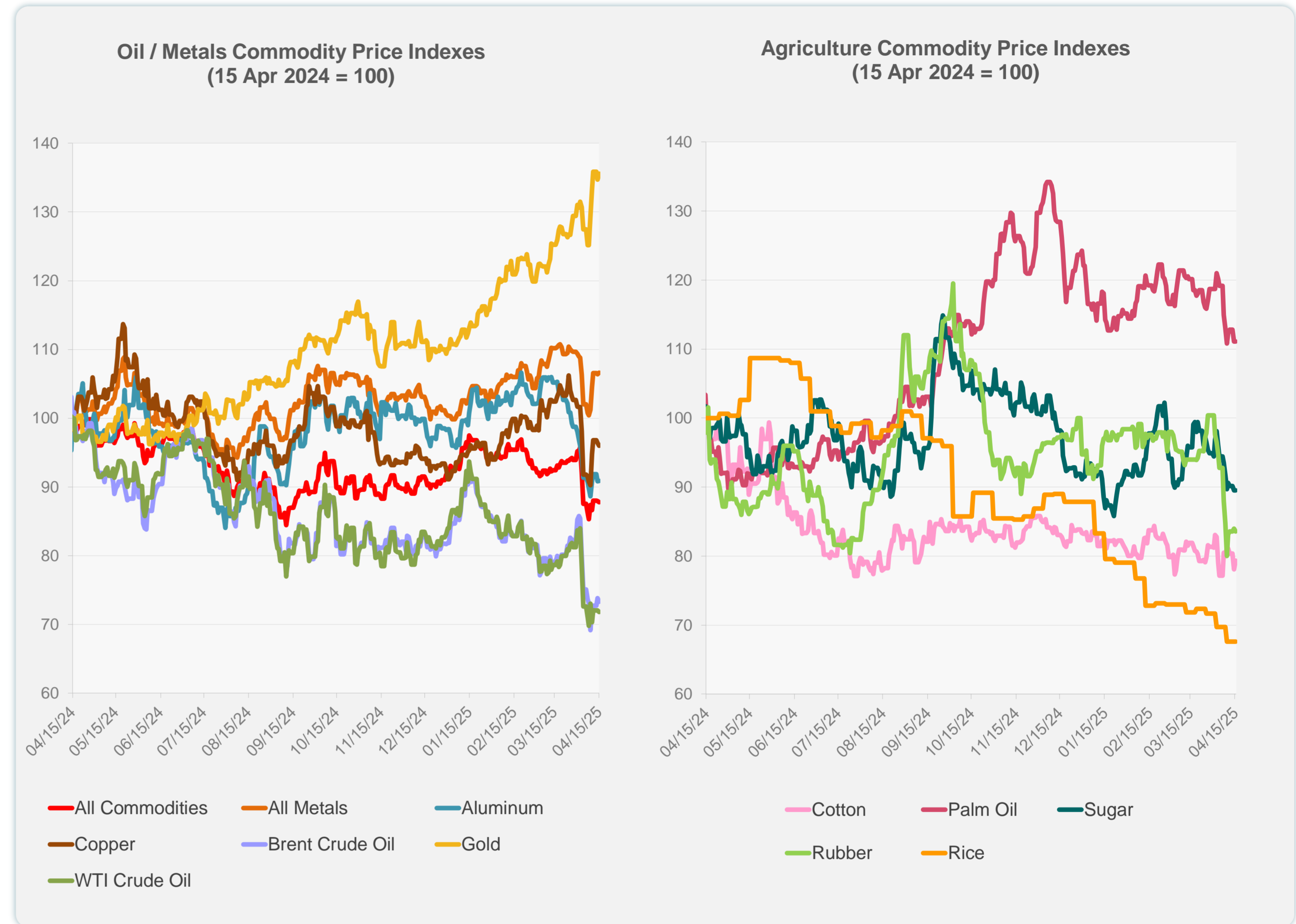


Sources: CEIC Data Company and Haver Analytics.

Daily Market Watch
COMMODITY PRICES

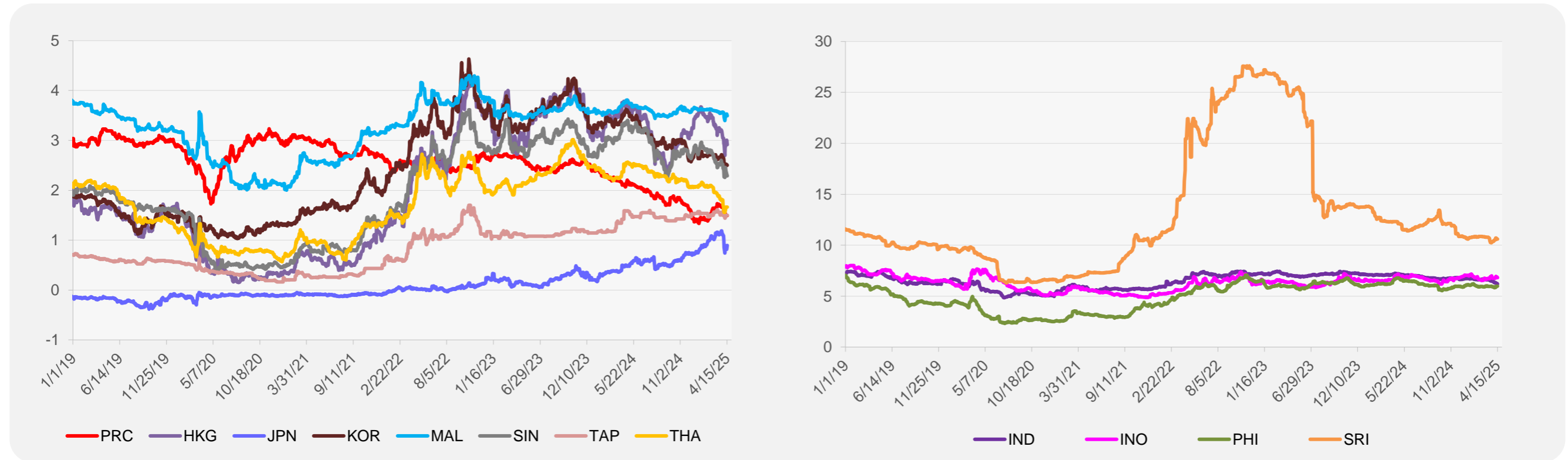
	Unit	Latest Closing	% change from Previous Day	% change from 01-Jan-25
S&P All Commodities	US\$	524.09	-0.20	-4.65
S&P All Metals	US\$	326.59	0.21	6.25
Aluminum	US\$/metric ton	2,333.94	0.05	-7.63
Copper	US\$/metric ton	9,119.26	-0.41	5.39
Cotton	US cents/lb	62.83	1.60	-4.66
Brent Crude Oil	US\$/barrel	66.34	-0.70	-10.48
WTI Crude Oil	US\$/barrel	61.33	-0.33	-14.49
Gold	US\$/troy oz	3,230.72	0.62	23.10
Palm Oil	US\$/metric tonne	1,001.36	0.00	-8.98
Rice ¹	US\$/metric ton	413.00	0.00	-23.09
Rubber ²	US\$/kg	209.00	-0.48	-11.74
Sugar	US cents/lb	17.81	0.00	-2.14

¹ Latest closing price from 9 April 2025.
² Singapore Exchange, Ribbed Smoked Sheet Rubber.

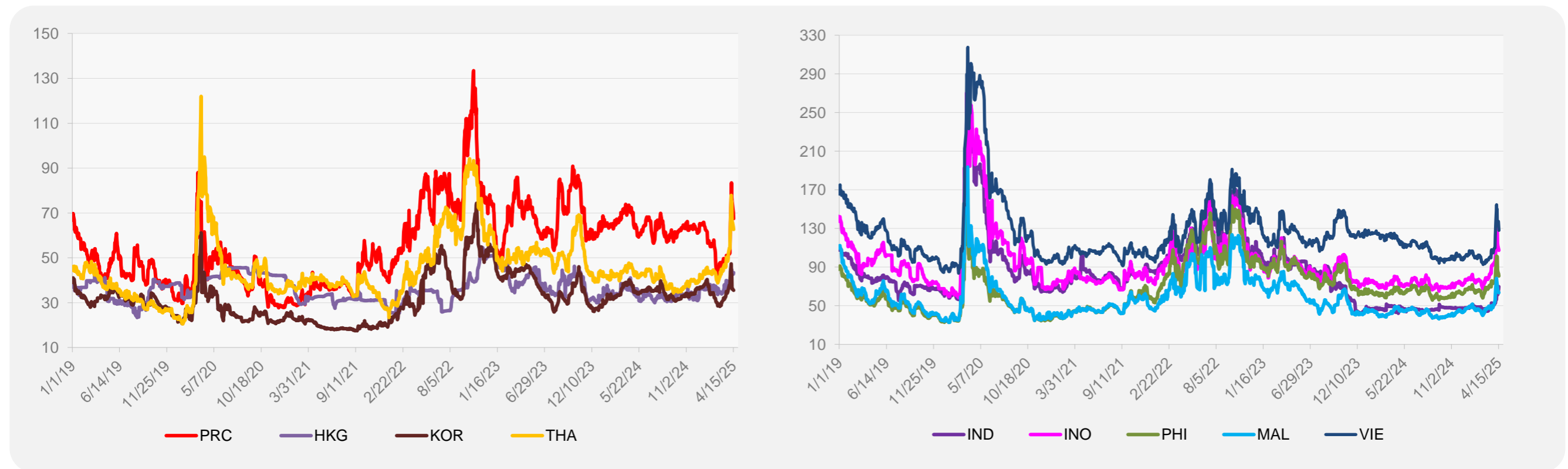


Source: ADB calculations using data from Bloomberg.

5-YEAR LOCAL CURRENCY GOVERNMENT BOND YIELDS (%)



5-YEAR CREDIT DEFAULT SWAP¹



¹ In USD and based on sovereign bonds.
Source: ADB calculations using data from Bloomberg.