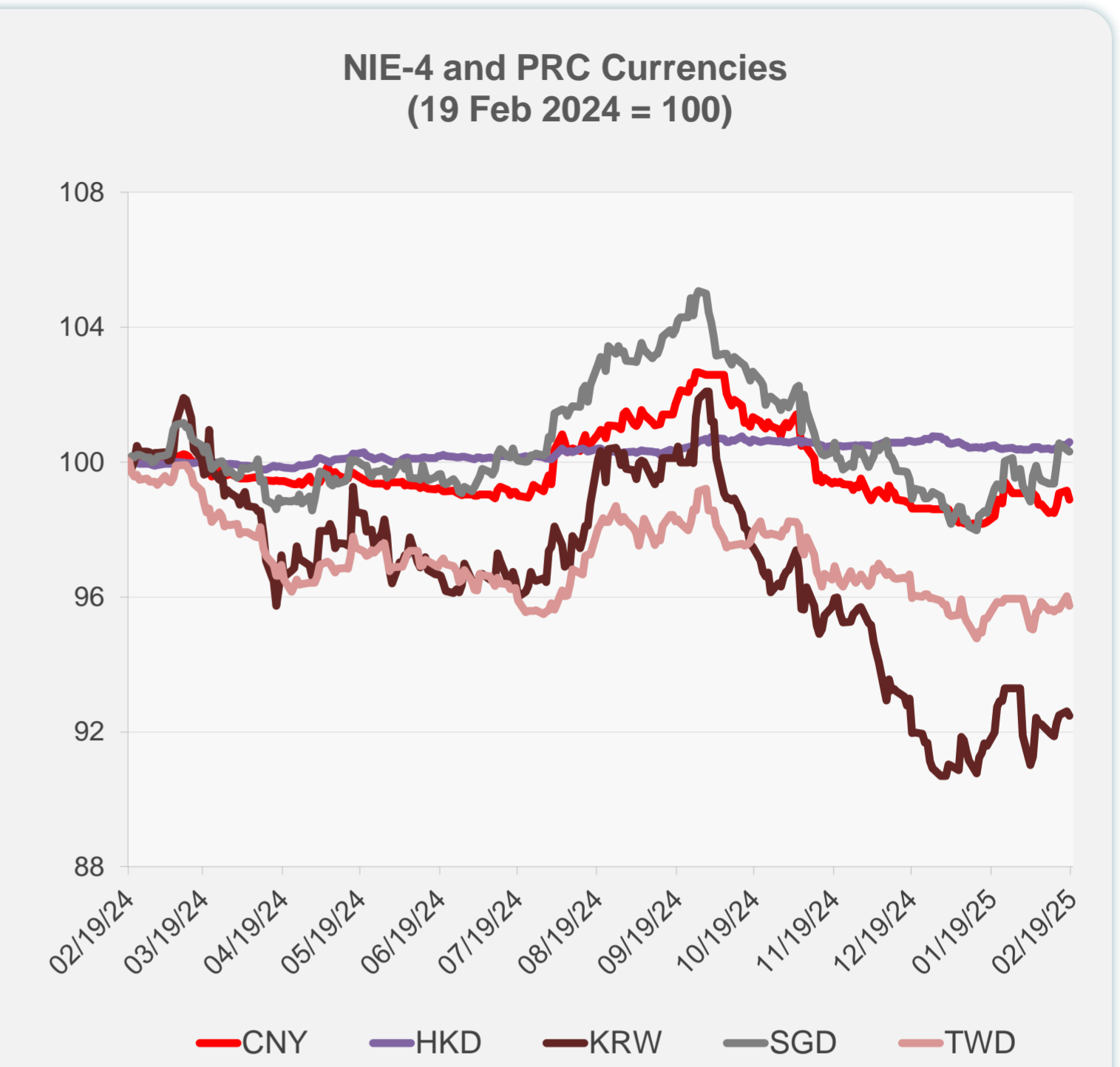
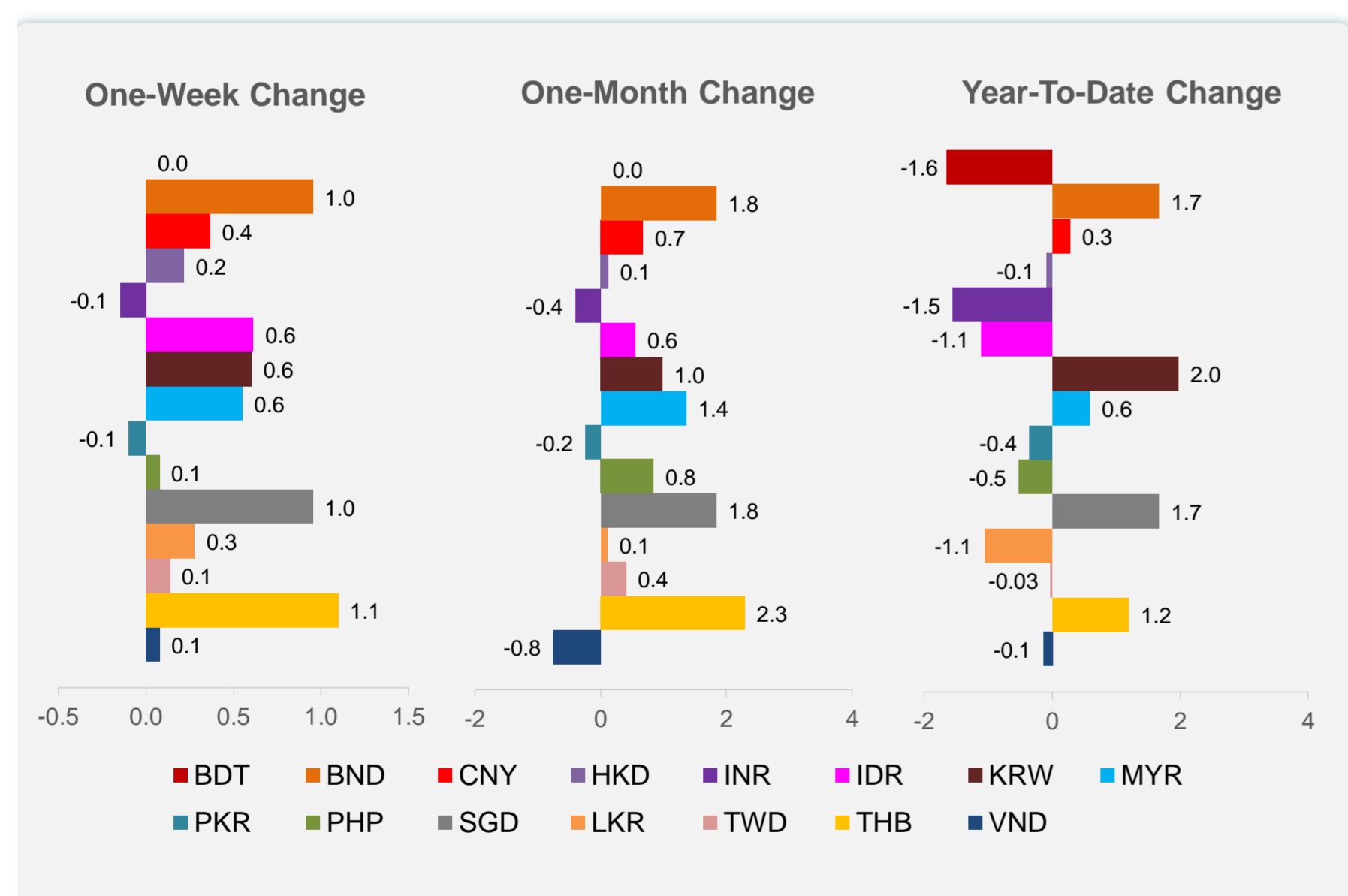
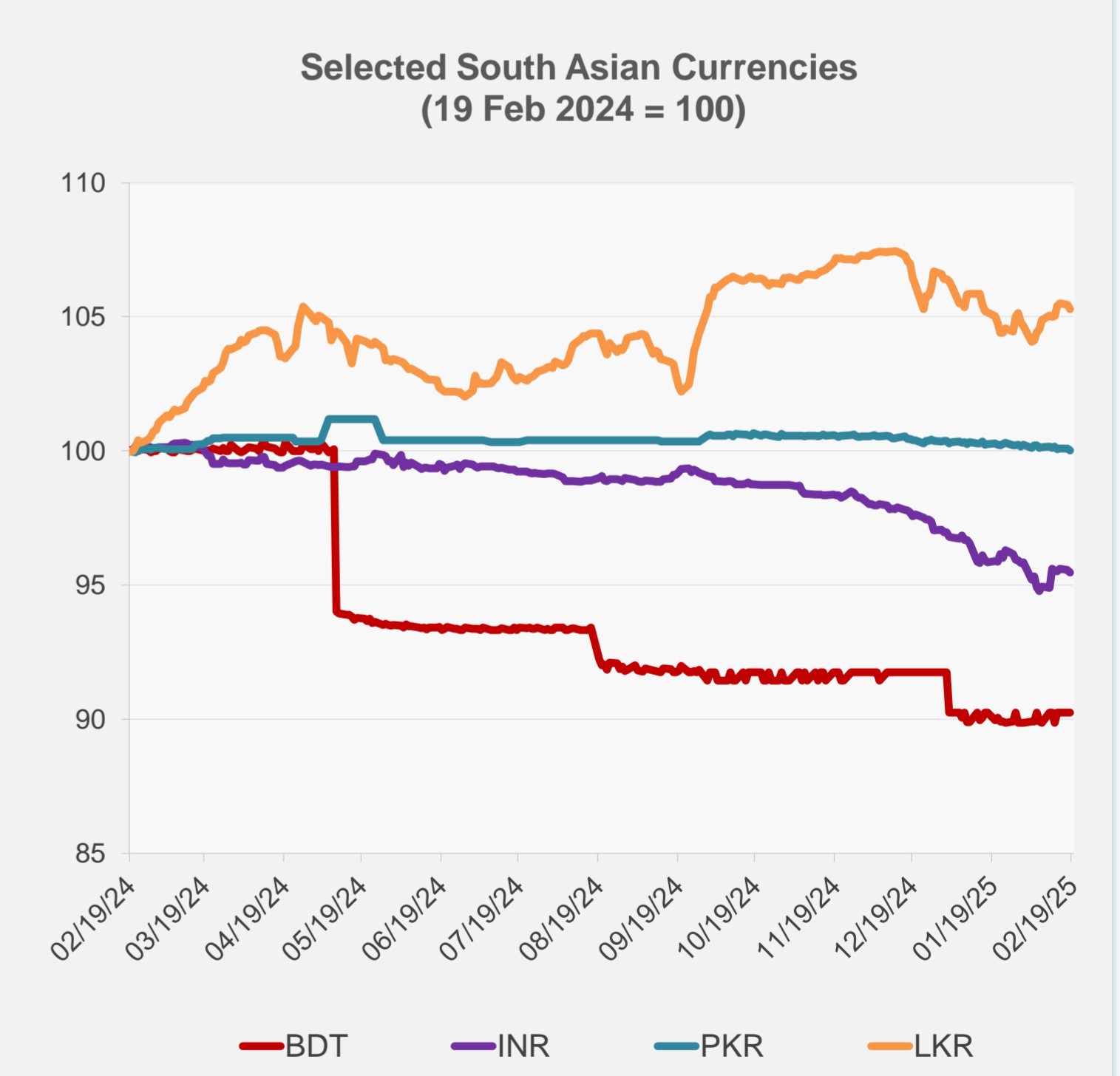
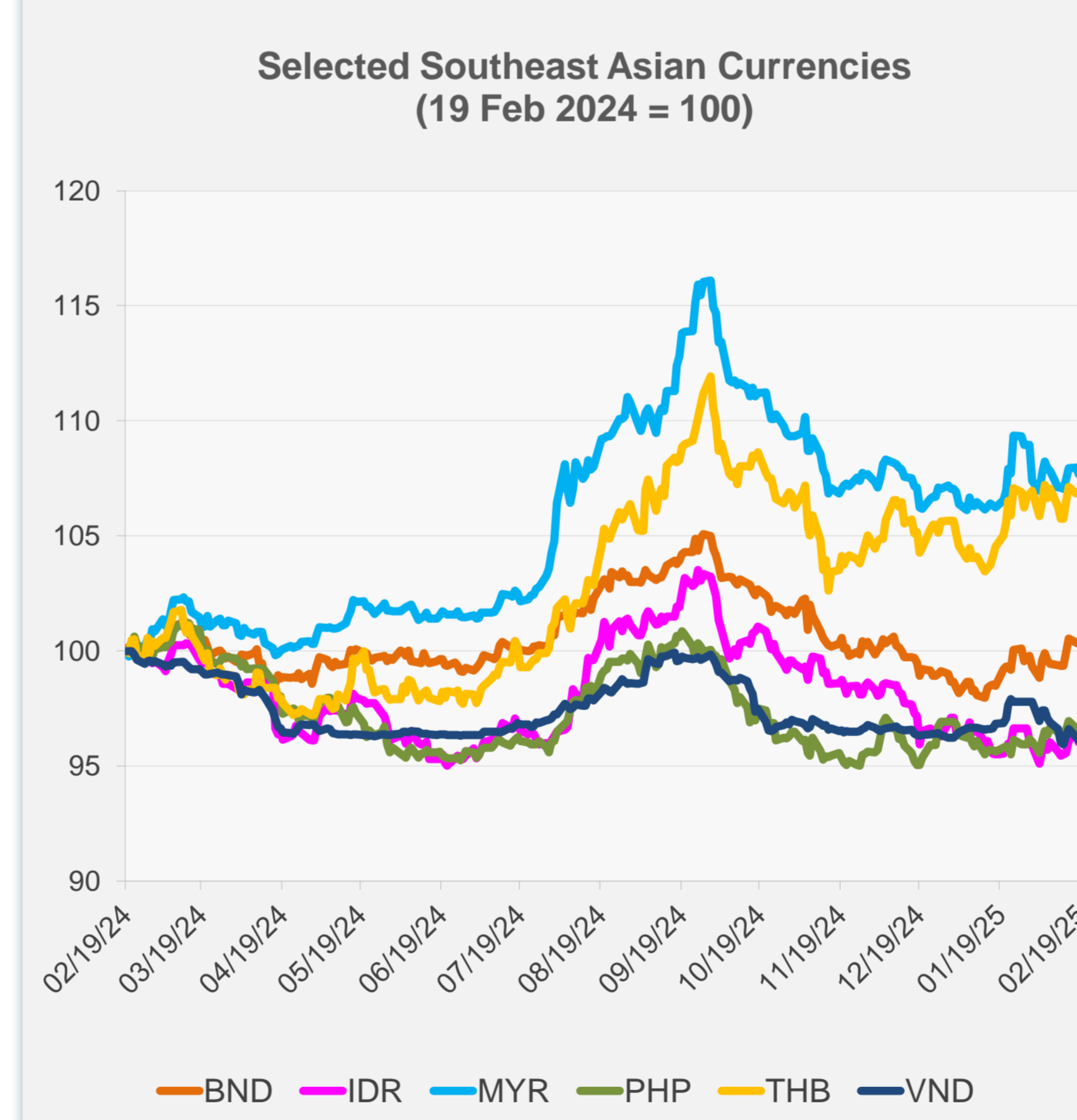


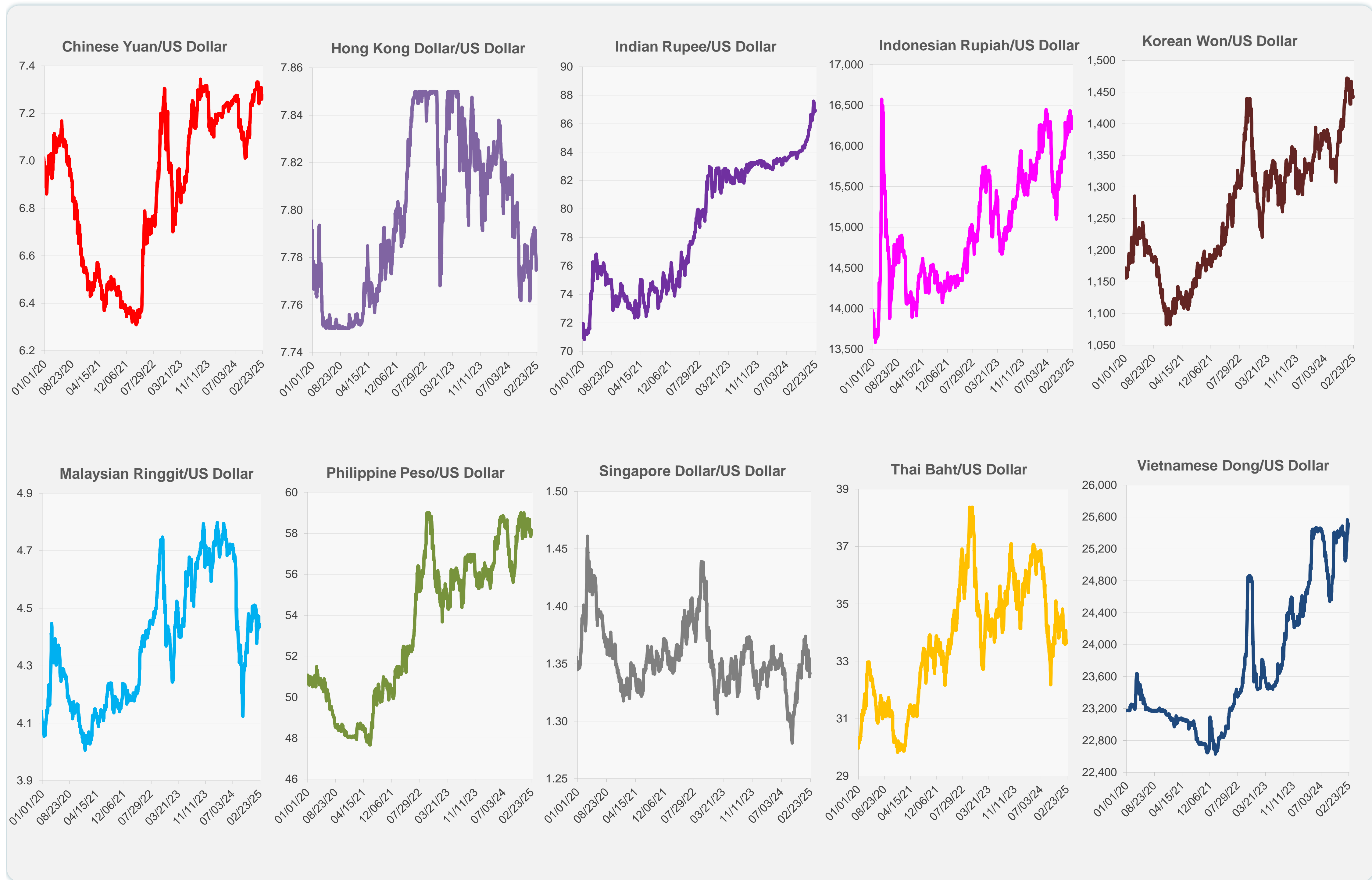
|                              | Latest Closing | % change from Previous Day | % change from 01-Jan-25 |
|------------------------------|----------------|----------------------------|-------------------------|
| Euro                         | 0.96           | -0.13                      | 1.08                    |
| Japanese yen (JPY)           | 151.67         | -0.20                      | 3.62                    |
| Bangladeshi taka (BDT)       | 121.50         | 0.00                       | -1.65                   |
| Brunei dollar (BND)          | 1.34           | -0.06                      | 1.67                    |
| Chinese yuan (CNY)           | 7.28           | -0.27                      | 0.27                    |
| Hong Kong dollar (HKD)       | 7.77           | 0.07                       | -0.08                   |
| Indian rupee (INR)           | 86.96          | -0.10                      | -1.55                   |
| Indonesian rupiah (IDR)      | 16,275.00      | -0.37                      | -1.11                   |
| Korean won (KRW)             | 1,443.70       | -0.14                      | 1.97                    |
| Malaysian ringgit (MYR)      | 4.45           | -0.26                      | 0.58                    |
| Pakistan rupee (PKR)         | 279.38         | -0.06                      | -0.36                   |
| Philippine peso (PHP)        | 58.15          | -0.22                      | -0.52                   |
| Singapore dollar (SGD)       | 1.34           | -0.06                      | 1.67                    |
| Sri Lanka rupee (LKR)        | 296.13         | -0.16                      | -1.06                   |
| Taipei,China NT dollar (TWD) | 32.79          | -0.29                      | -0.03                   |
| Thai baht (THB)              | 33.69          | 0.07                       | 1.19                    |
| Vietnamese dong (VND)        | 25,520.00      | -0.15                      | -0.14                   |



NIE = Newly Industrialized Economies

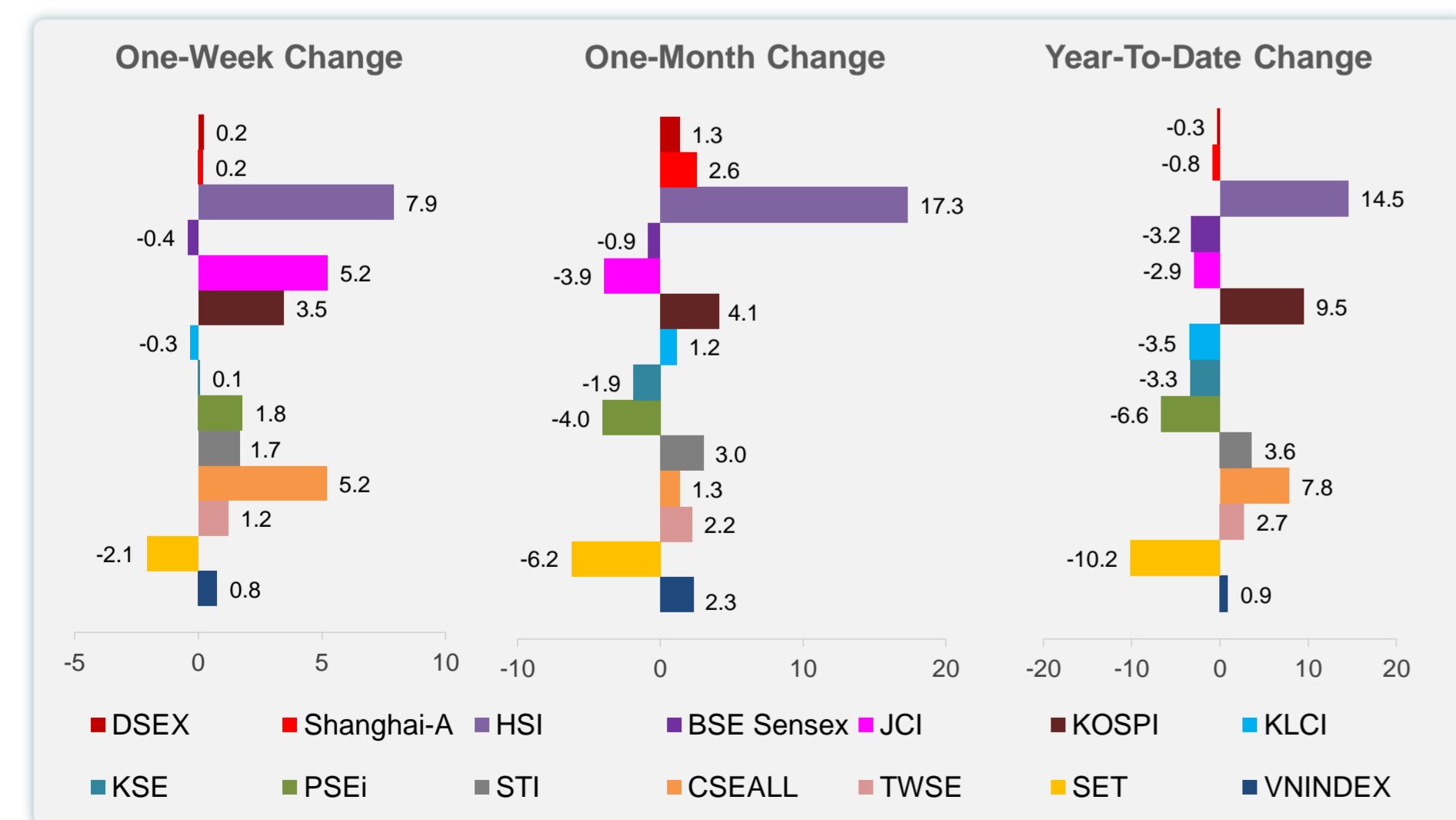
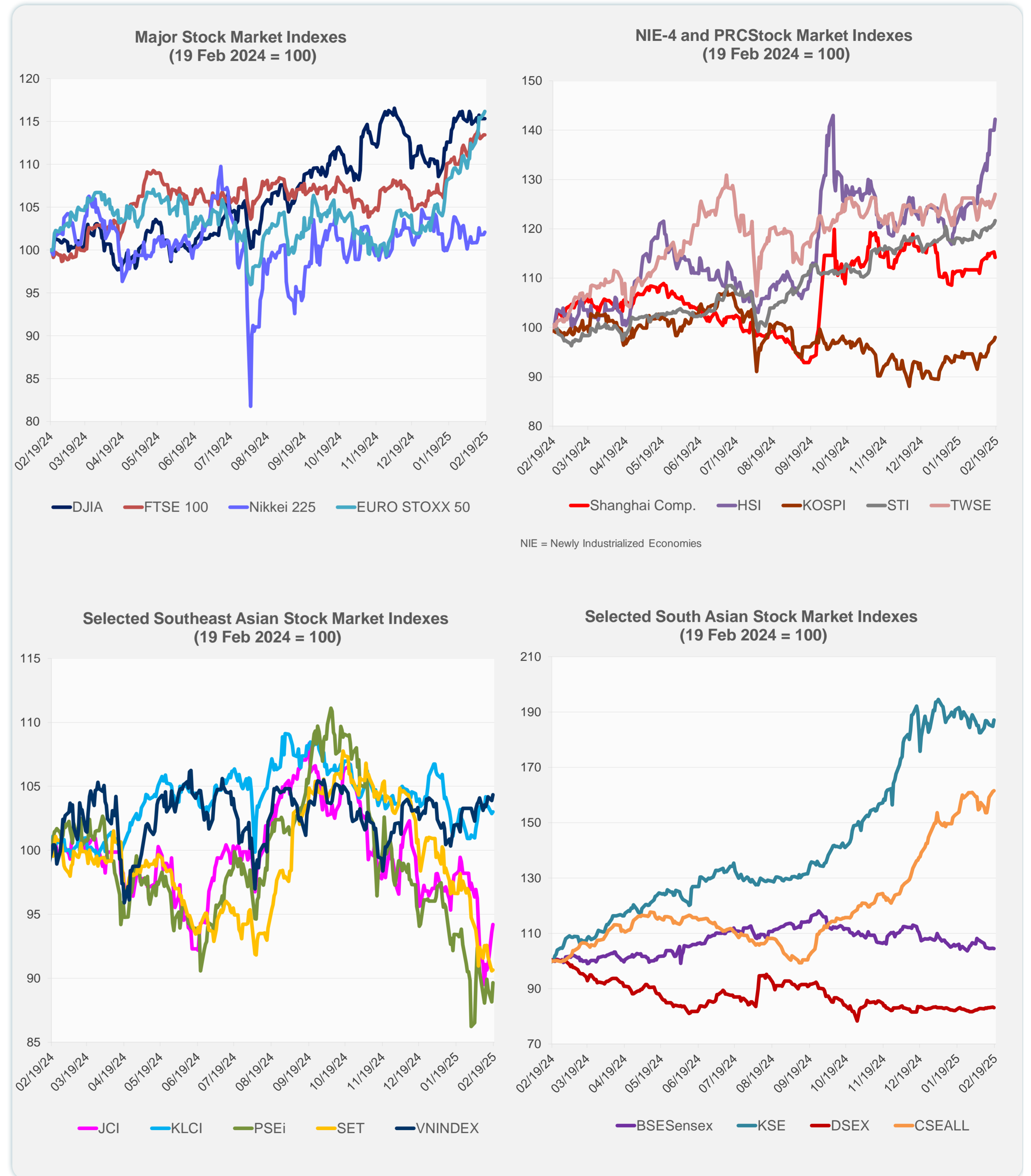


Note: Negative/Decreasing values indicate depreciation of local currency, and positive/increasing values indicate appreciation.  
Source: ADB calculations using data from Haver Analytics.

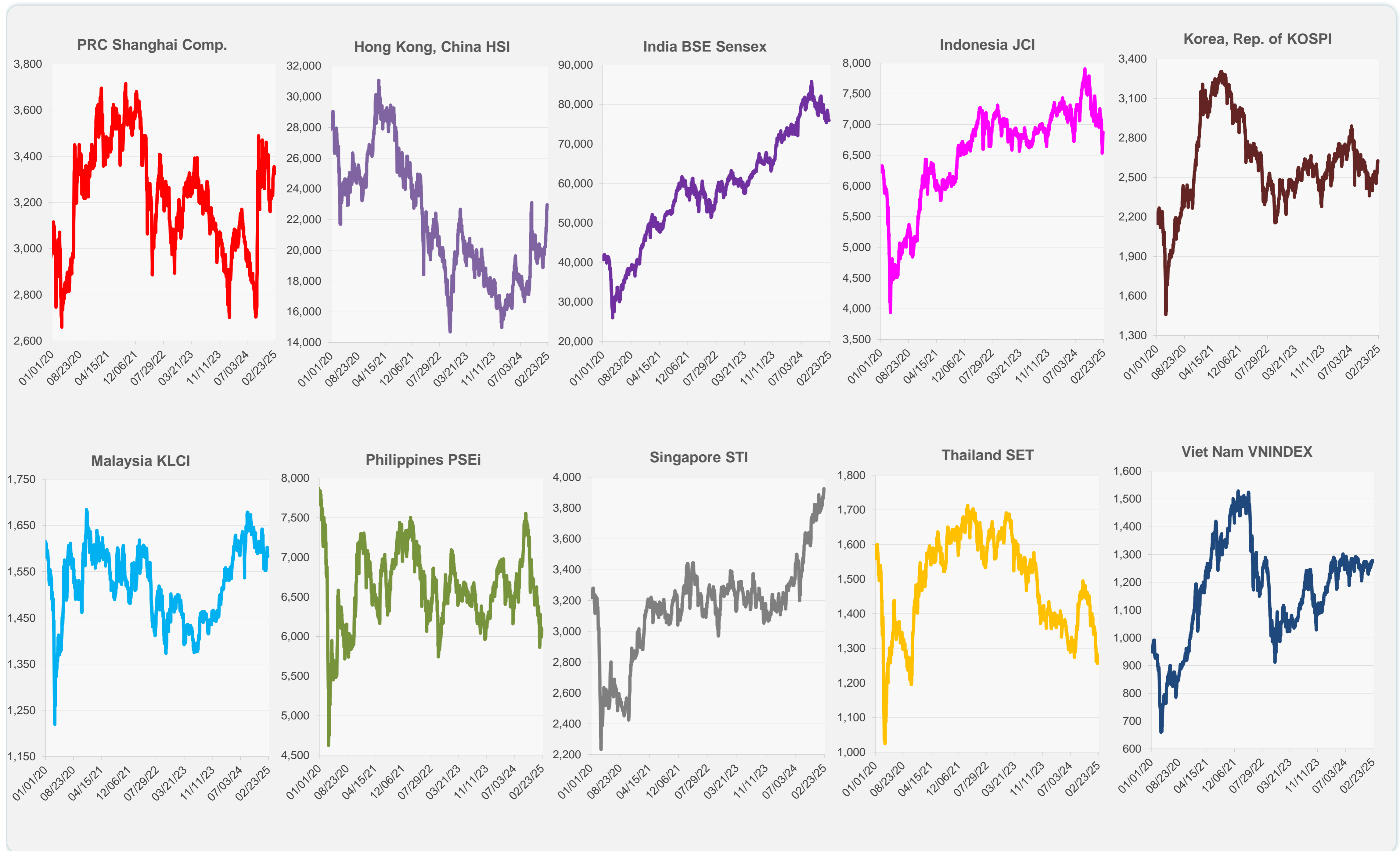


Source: Haver Analytics.

|                      | Latest Closing | % change from Previous Day | % change from 01-Jan-25 |
|----------------------|----------------|----------------------------|-------------------------|
| US Dow Jones Ind Avg | 44,556.34      | 0.02                       | 4.73                    |
| US NASDAQ            | 20,041.26      | 0.07                       | 3.78                    |
| US S&P 500           | 6,129.58       | 0.24                       | 4.22                    |
| UK FTSE 100          | 8,766.73       | -0.01                      | 7.26                    |
| EURO STOXX 50        | 5,533.84       | 0.25                       | 13.03                   |
| Japan NIKKEI 225     | 39,270.40      | 0.25                       | -1.56                   |
| Bangladesh DSEX      | 5,203.20       | -0.16                      | -0.29                   |
| PRC Shanghai Comp.   | 3,324.49       | -0.93                      | -0.81                   |
| Hong Kong, China HSI | 22,976.81      | 1.59                       | 14.54                   |
| India BSE Sensex     | 75,967.39      | -0.04                      | -3.24                   |
| Indonesia JCI        | 6,873.55       | 0.62                       | -2.91                   |
| Korea, Rep. of KOSPI | 2,626.81       | 0.63                       | 9.47                    |
| Malaysia KLCI        | 1,584.84       | 0.13                       | -3.50                   |
| Pakistan KSE 100     | 113,088.47     | 1.20                       | -3.35                   |
| Philippines PSEi     | 6,094.96       | 1.69                       | -6.64                   |
| Singapore STI        | 3,925.56       | 0.53                       | 3.64                    |
| Sri Lanka CSEALL     | 17,193.79      | 0.22                       | 7.83                    |
| Taipei, China TWSE   | 23,666.11      | 0.68                       | 2.74                    |
| Thailand SET         | 1,257.48       | 0.08                       | -10.19                  |
| Viet Nam VNINDEX     | 1,278.14       | 0.43                       | 0.90                    |



Sources: ADB calculations using data from CEIC Data Company and Haver Analytics.



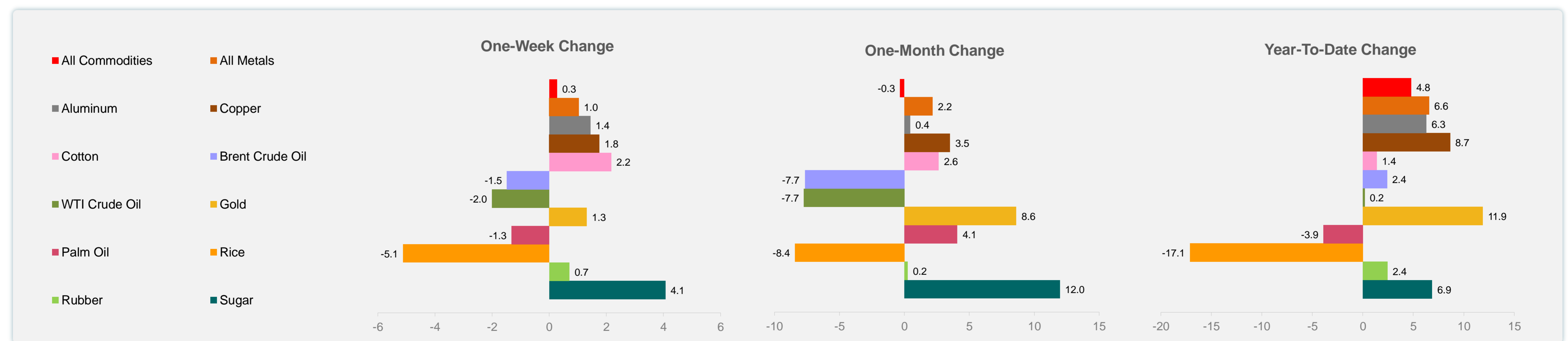
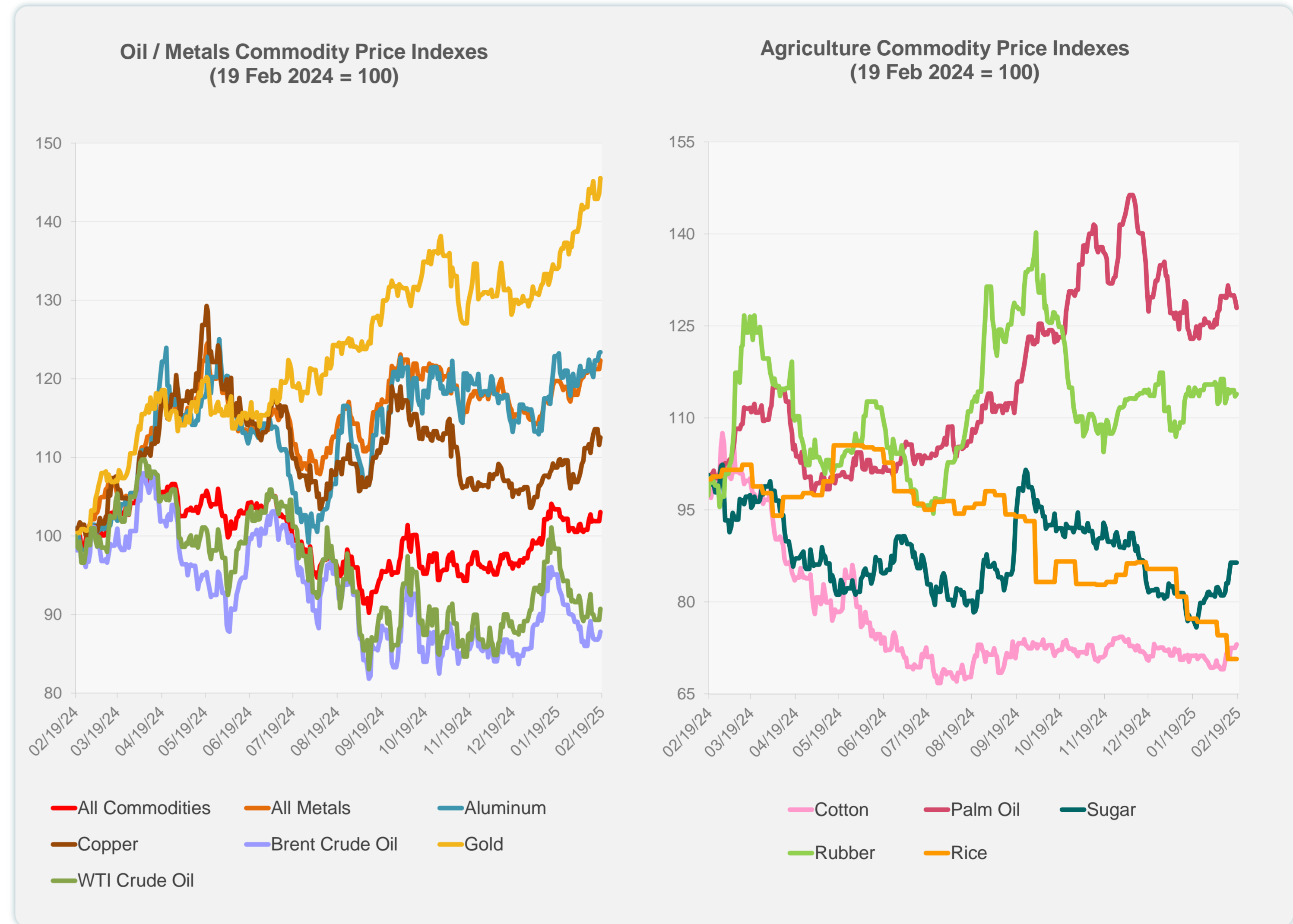
Sources: CEIC Data Company and Haver Analytics.

Daily Market Watch  
**COMMODITY PRICES**

19 February 2025, 9:00 AM Manila

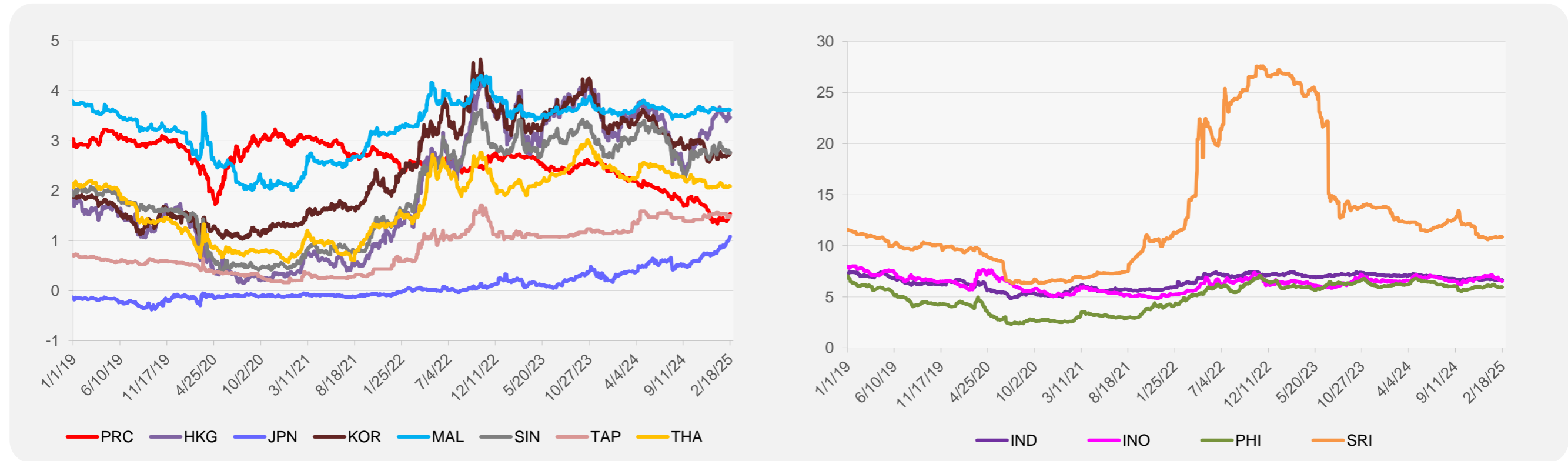
|                     | Unit              | Latest Closing | % change from Previous Day | % change from 01-Jan-25 |
|---------------------|-------------------|----------------|----------------------------|-------------------------|
| S&P All Commodities | US\$              | 575.96         | 1.15                       | 4.79                    |
| S&P All Metals      | US\$              | 327.57         | 0.92                       | 6.57                    |
| Aluminum            | US\$/metric ton   | 2,685.84       | 0.09                       | 6.29                    |
| Copper              | US\$/metric ton   | 9,401.15       | 0.86                       | 8.65                    |
| Cotton              | US cents/lb       | 66.82          | 0.77                       | 1.40                    |
| Brent Crude Oil     | US\$/barrel       | 75.89          | 0.83                       | 2.41                    |
| WTI Crude Oil       | US\$/barrel       | 71.85          | 1.57                       | 0.18                    |
| Gold                | US\$/troy oz      | 2,936.02       | 1.36                       | 11.87                   |
| Palm Oil            | US\$/metric tonne | 1,057.14       | -1.04                      | -3.91                   |
| Rice <sup>1</sup>   | US\$/metric ton   | 445.00         | 0.00                       | -17.13                  |
| Rubber <sup>2</sup> | US\$/kg           | 242.60         | 0.29                       | 2.45                    |
| Sugar               | US cents/lb       | 19.45          | 0.00                       | 6.87                    |

<sup>1</sup> Latest closing price from 22 January 2025.  
<sup>2</sup> Singapore Exchange, Ribbed Smoked Sheet Rubber.

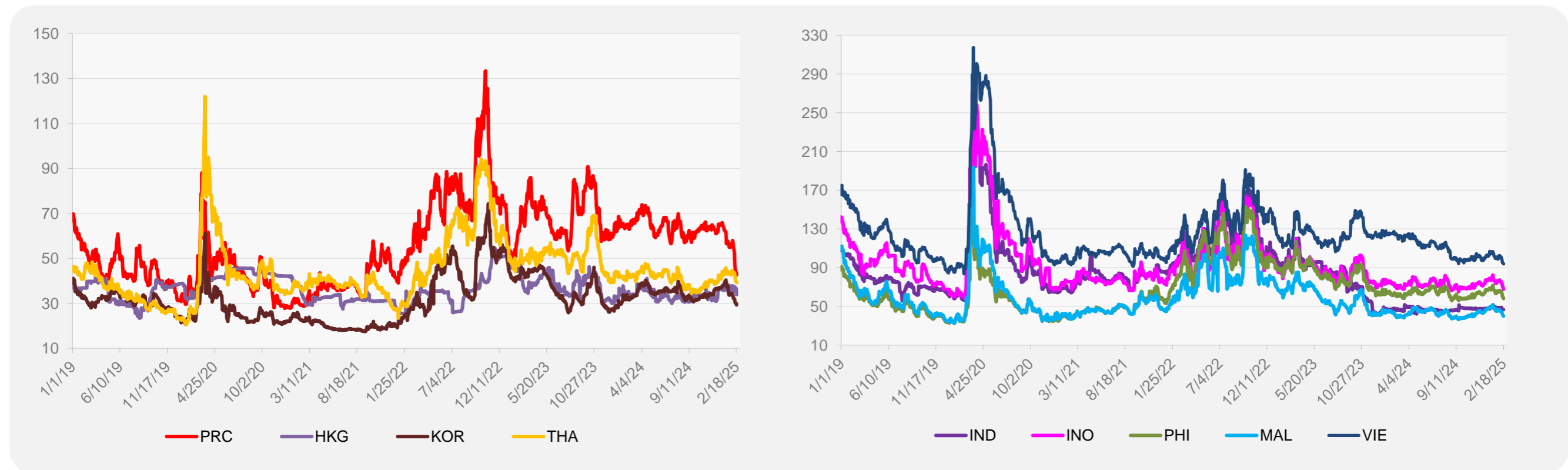


Source: ADB calculations using data from Bloomberg.

### 5-YEAR LOCAL CURRENCY GOVERNMENT BOND YIELDS (%)



### 5-YEAR CREDIT DEFAULT SWAP<sup>1</sup>



<sup>1</sup> In USD and based on sovereign bonds.  
Source: ADB calculations using data from Bloomberg.