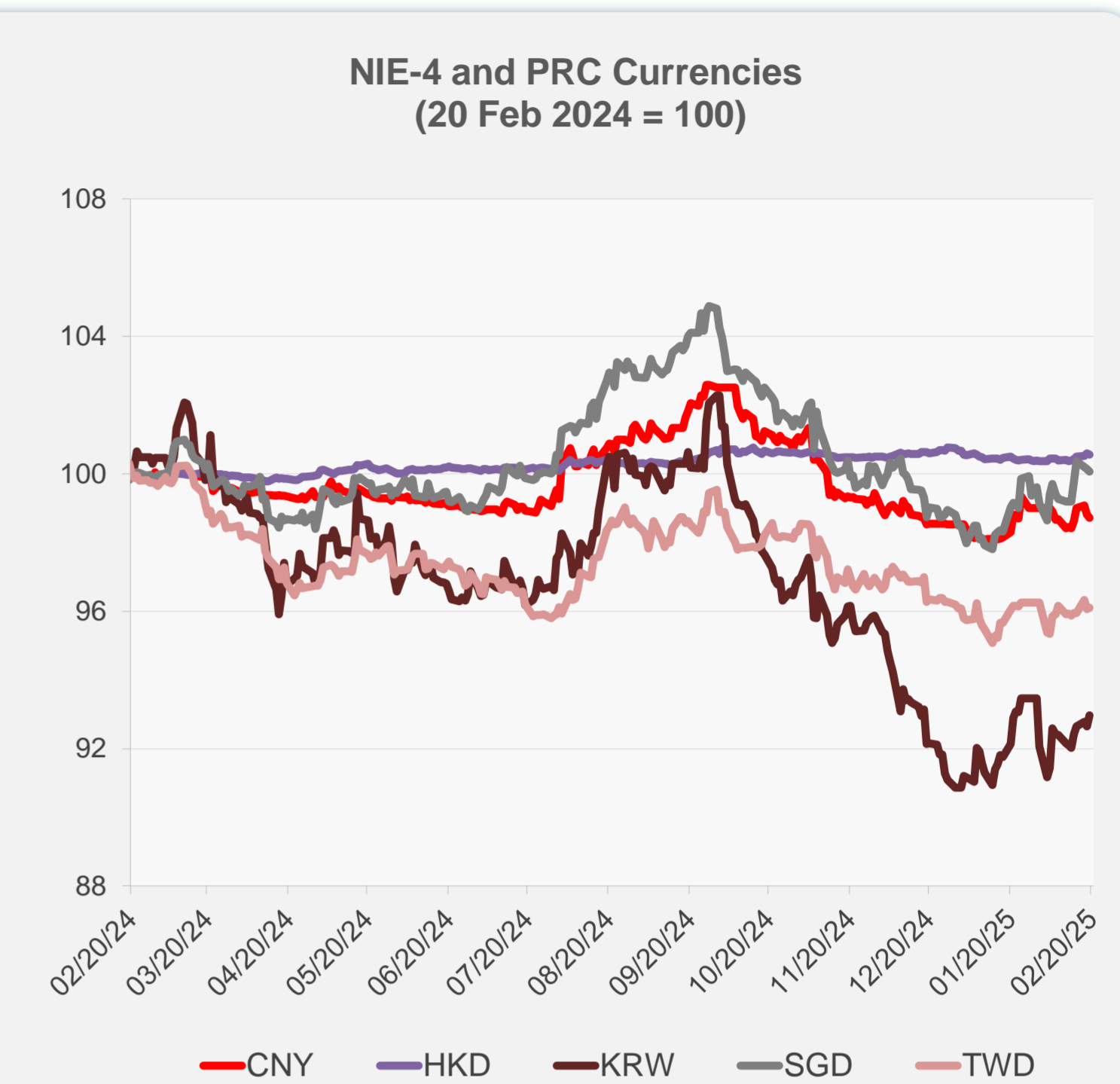
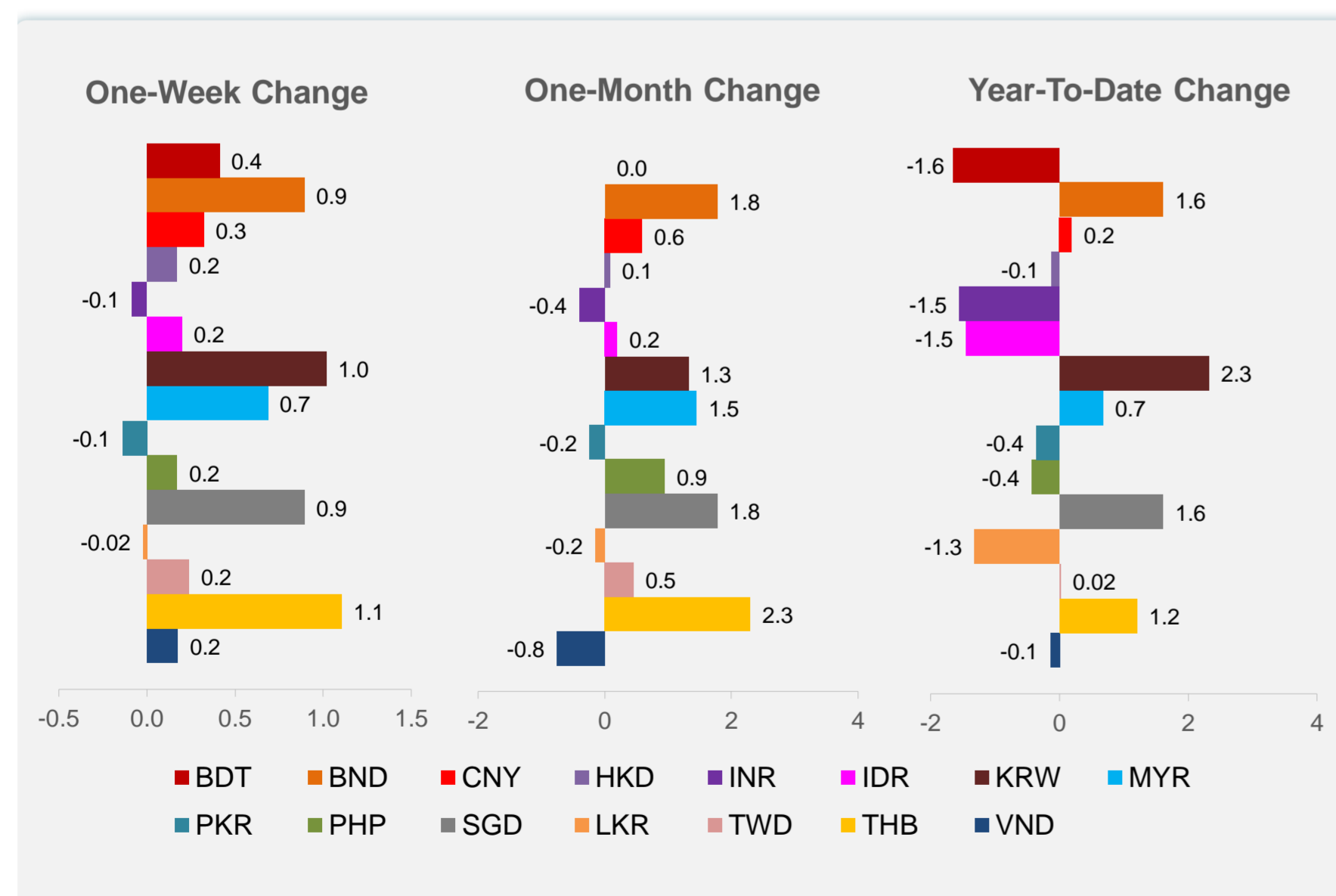
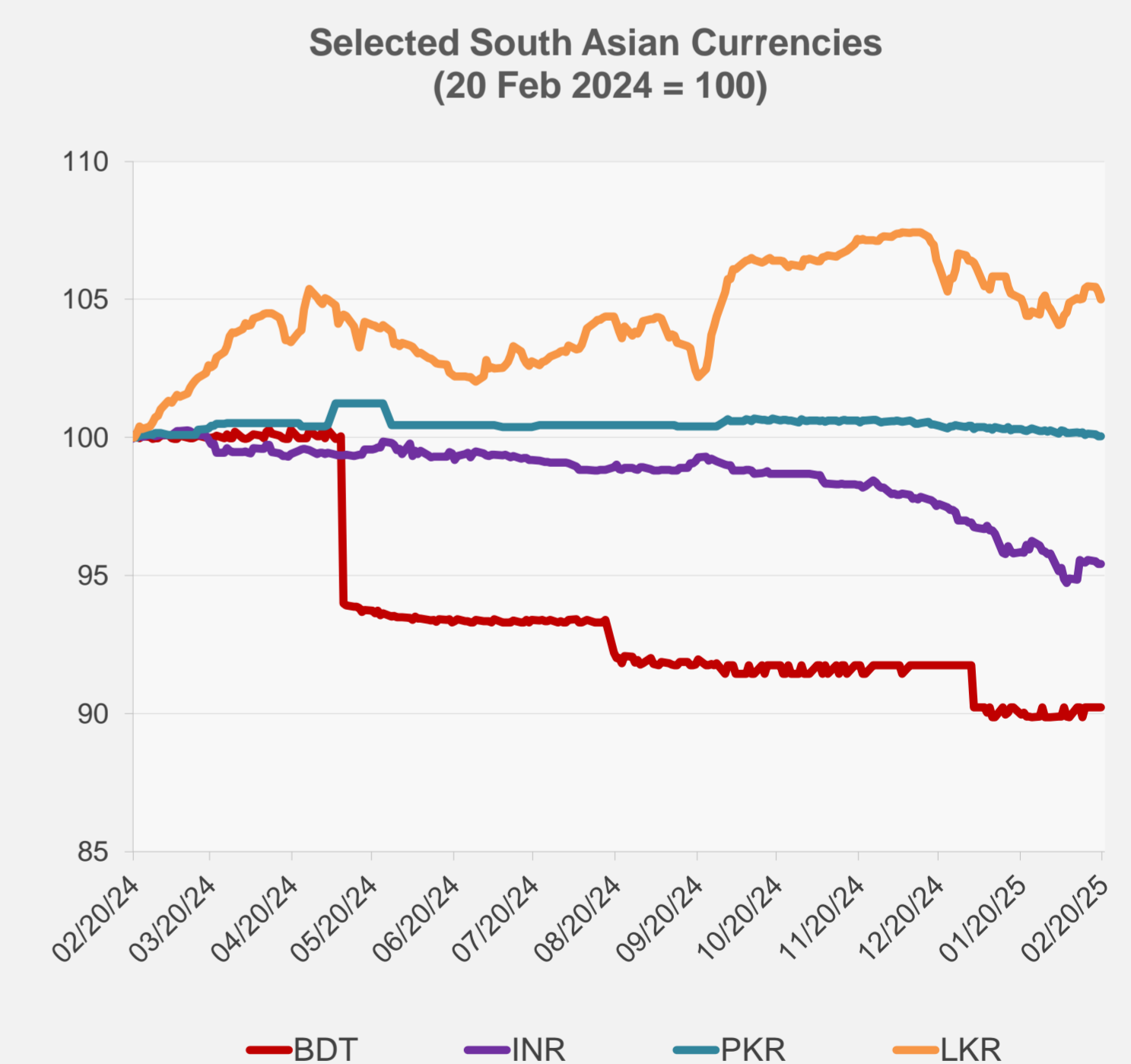
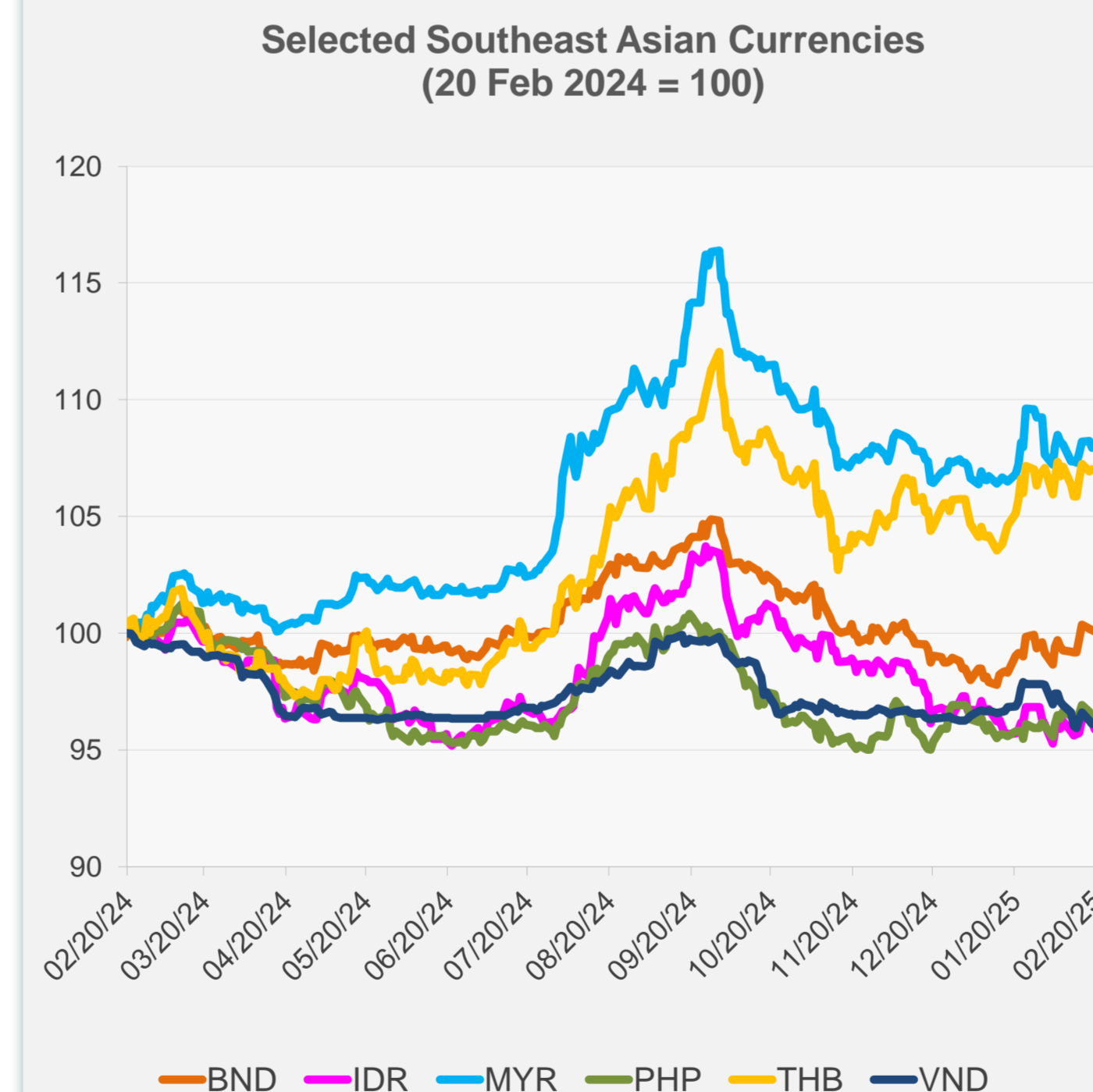


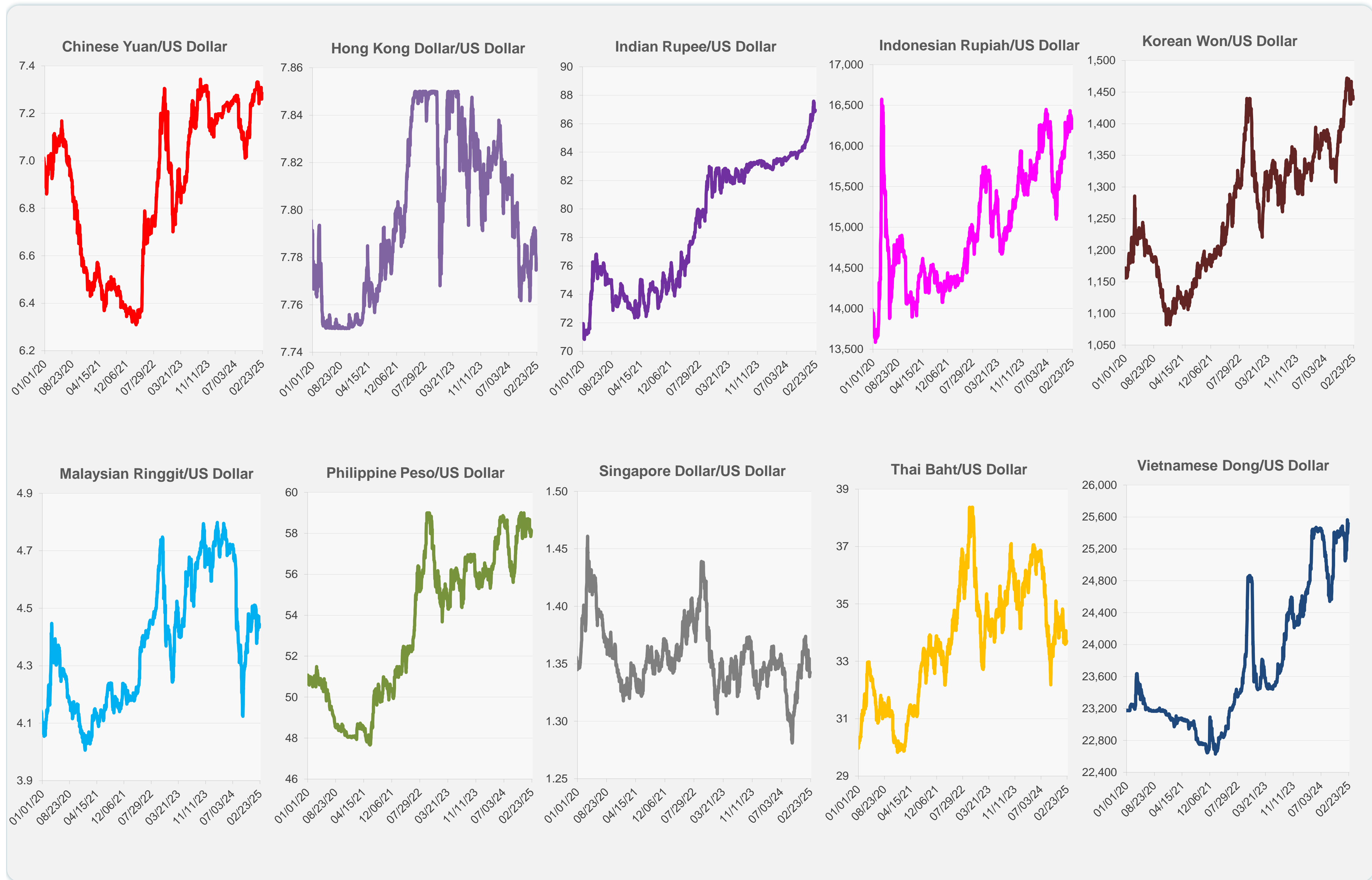
	Latest Closing	% change from Previous Day	% change from 01-Jan-25
Euro	0.96	-0.41	0.67
Japanese yen (JPY)	151.40	0.18	3.80
Bangladeshi taka (BDT)	121.50	0.00	-1.65
Brunei dollar (BND)	1.34	-0.06	1.61
Chinese yuan (CNY)	7.29	-0.08	0.19
Hong Kong dollar (HKD)	7.78	-0.04	-0.12
Indian rupee (INR)	86.96	0.00	-1.55
Indonesian rupiah (IDR)	16,332.50	-0.35	-1.45
Korean won (KRW)	1,438.75	0.34	2.32
Malaysian ringgit (MYR)	4.44	0.09	0.68
Pakistan rupee (PKR)	279.38	0.00	-0.36
Philippine peso (PHP)	58.09	0.10	-0.42
Singapore dollar (SGD)	1.34	-0.06	1.61
Sri Lanka rupee (LKR)	296.90	-0.26	-1.32
Taipei,China NT dollar (TWD)	32.78	0.05	0.02
Thai baht (THB)	33.69	0.01	1.20
Vietnamese dong (VND)	25,520.00	0.00	-0.14



NIE = Newly Industrialized Economies



Note: Negative/Decreasing values indicate depreciation of local currency, and positive/increasing values indicate appreciation.  
Source: ADB calculations using data from Haver Analytics.

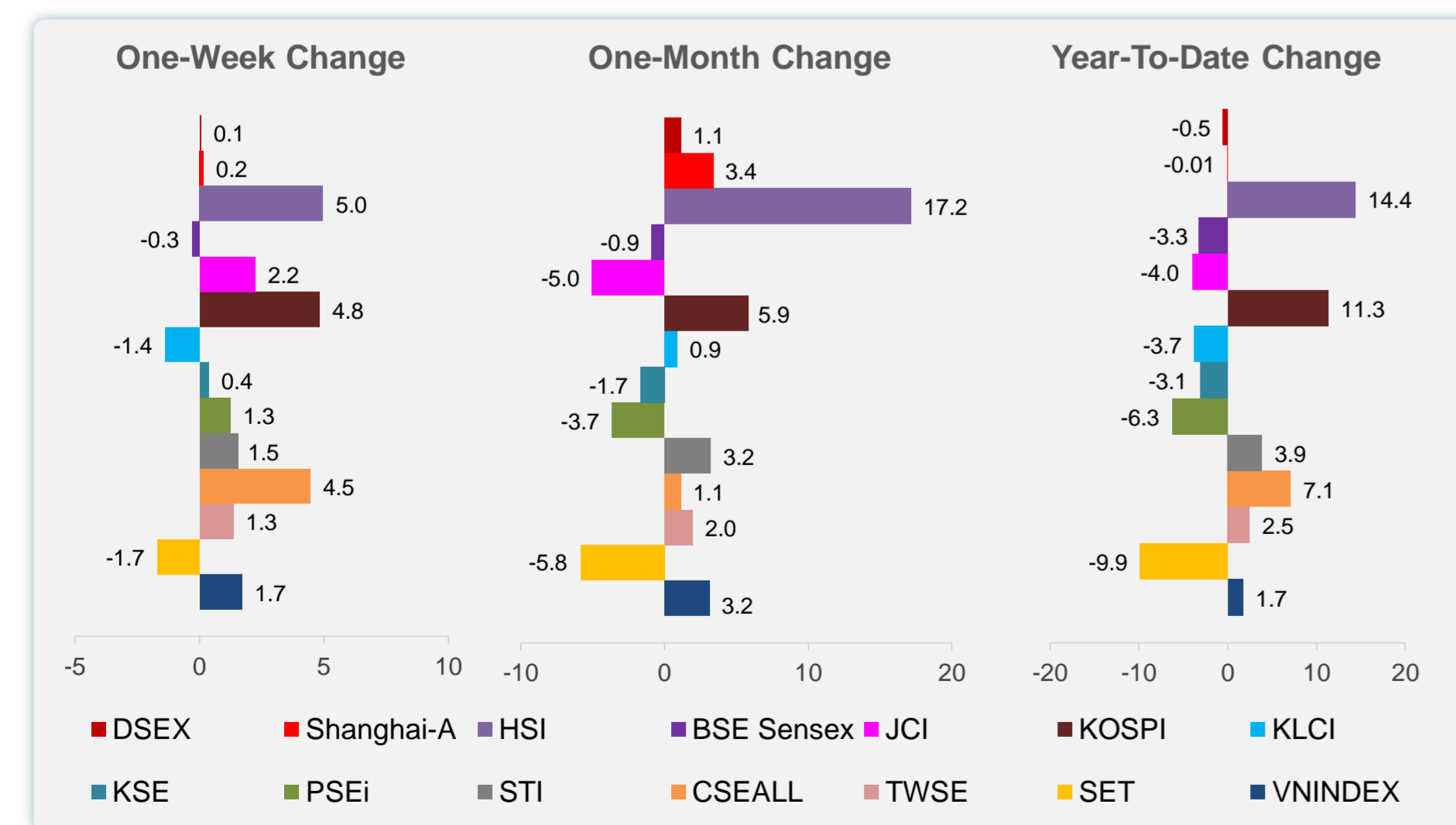
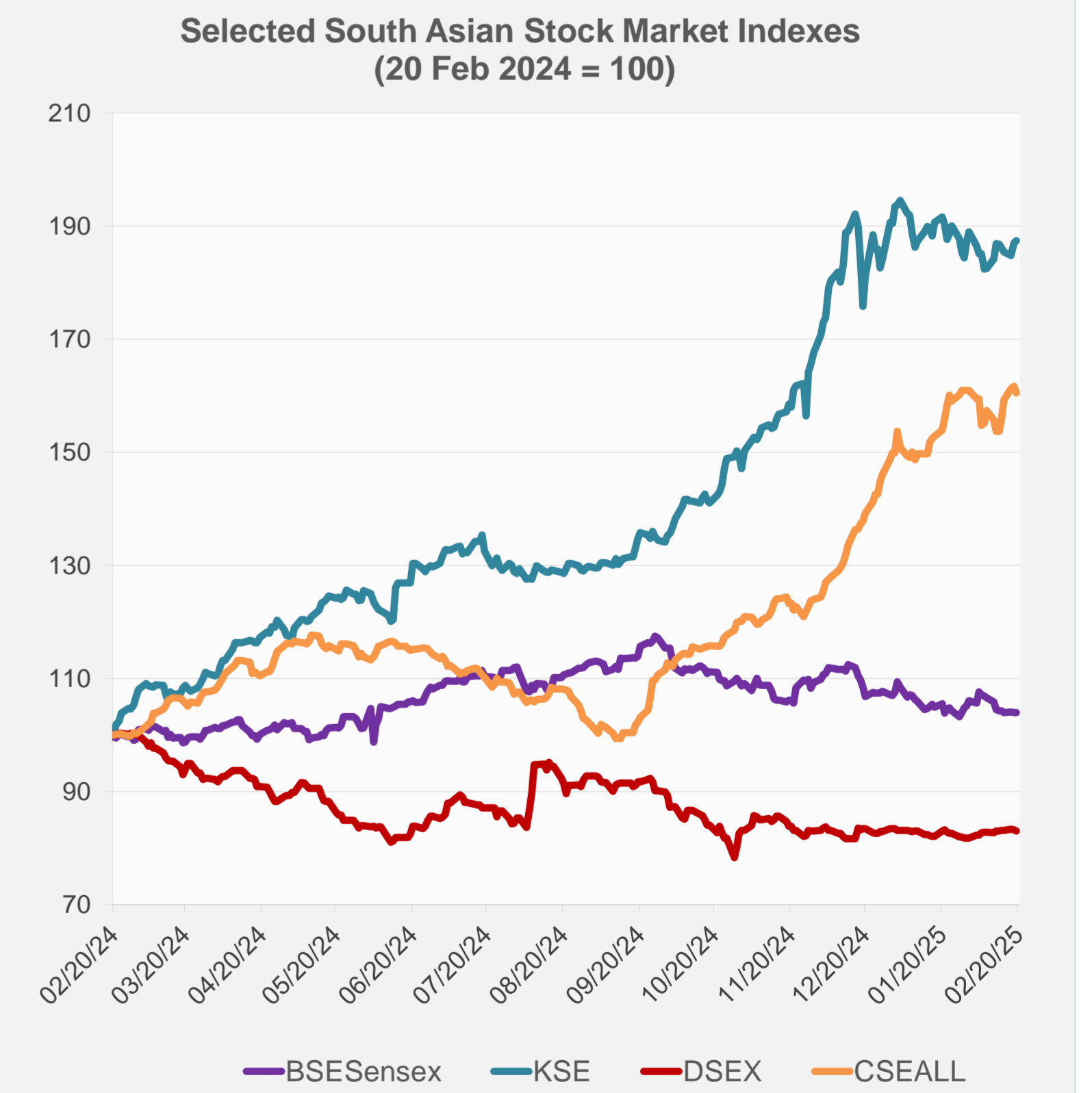
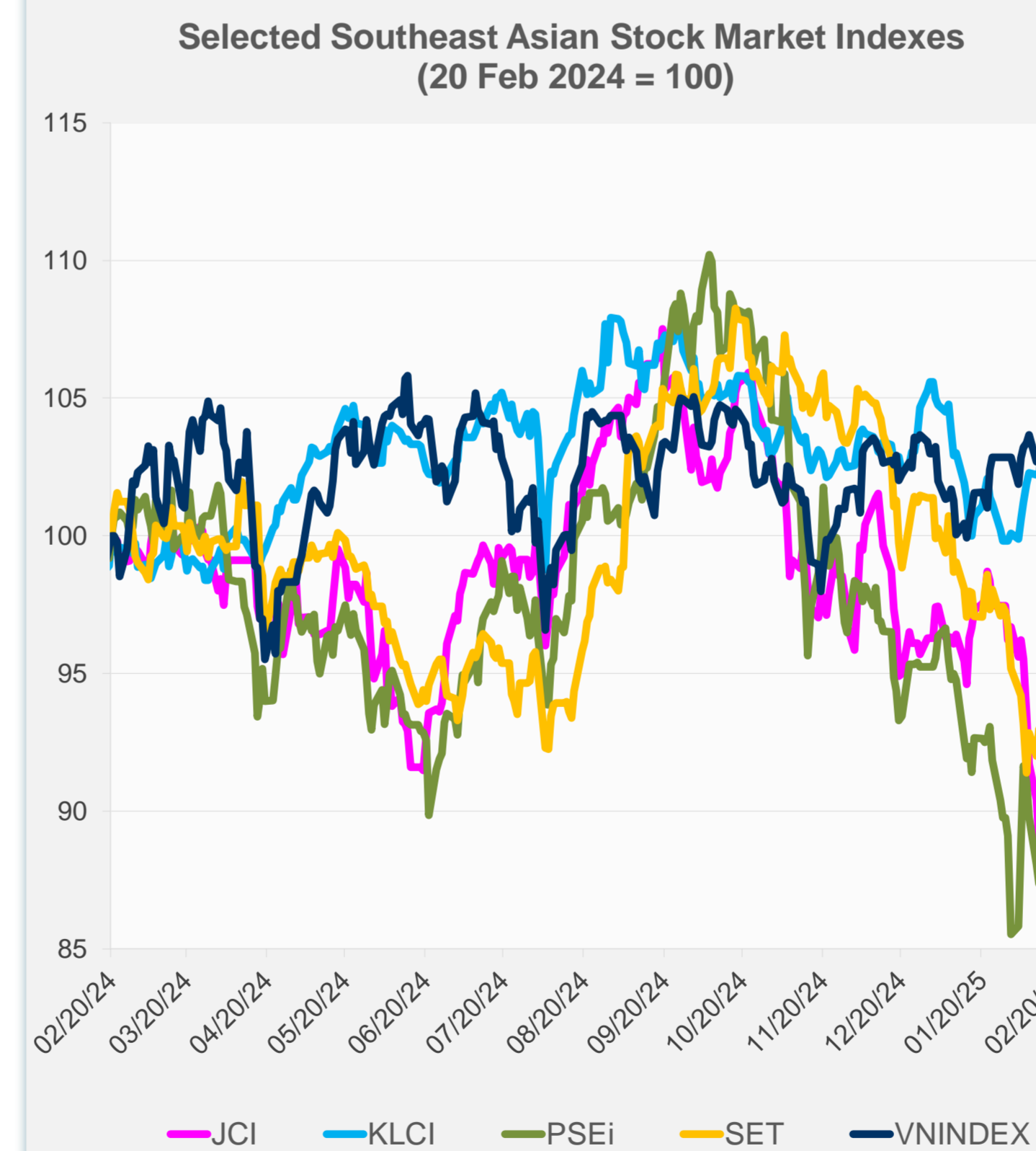
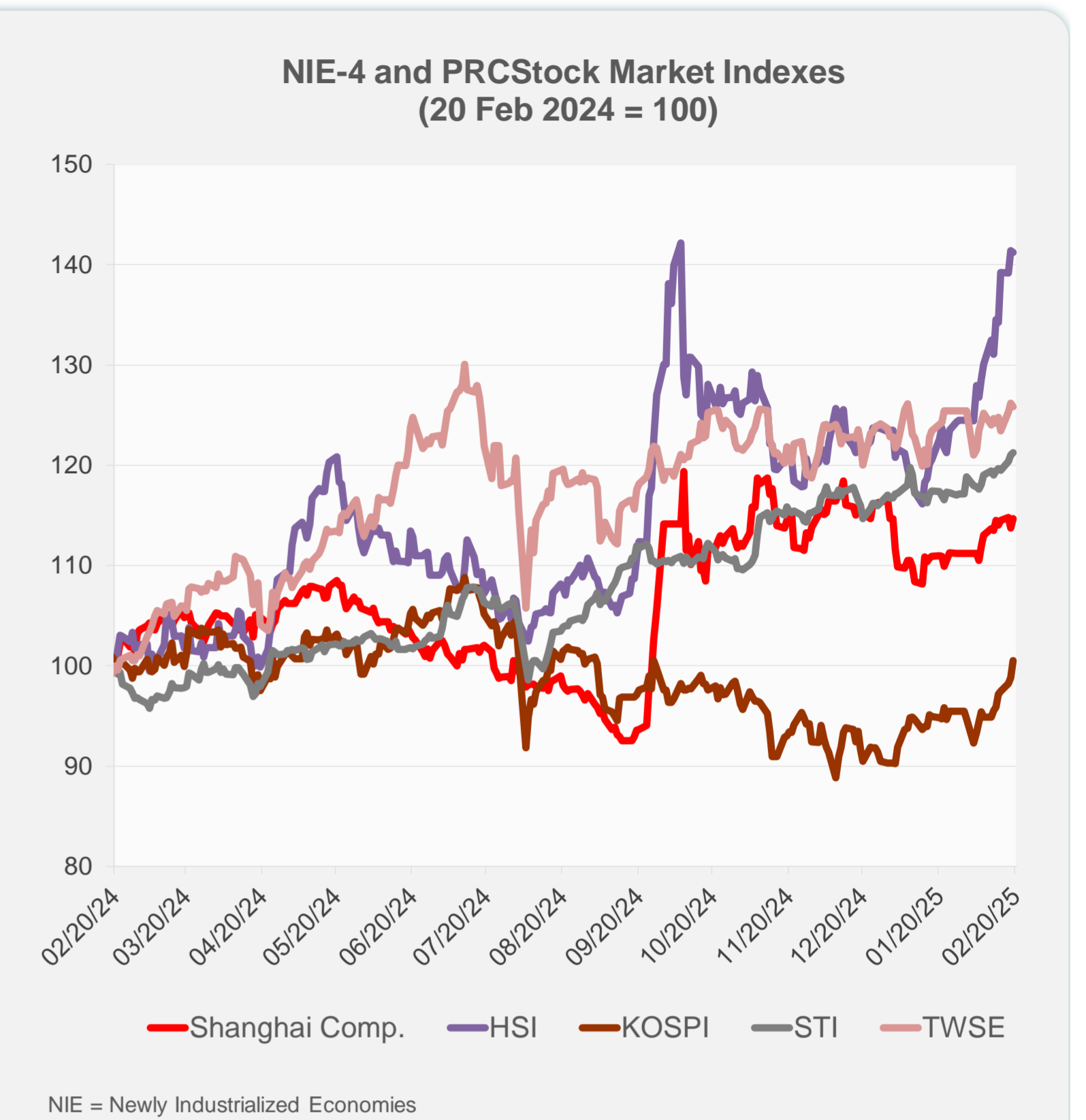
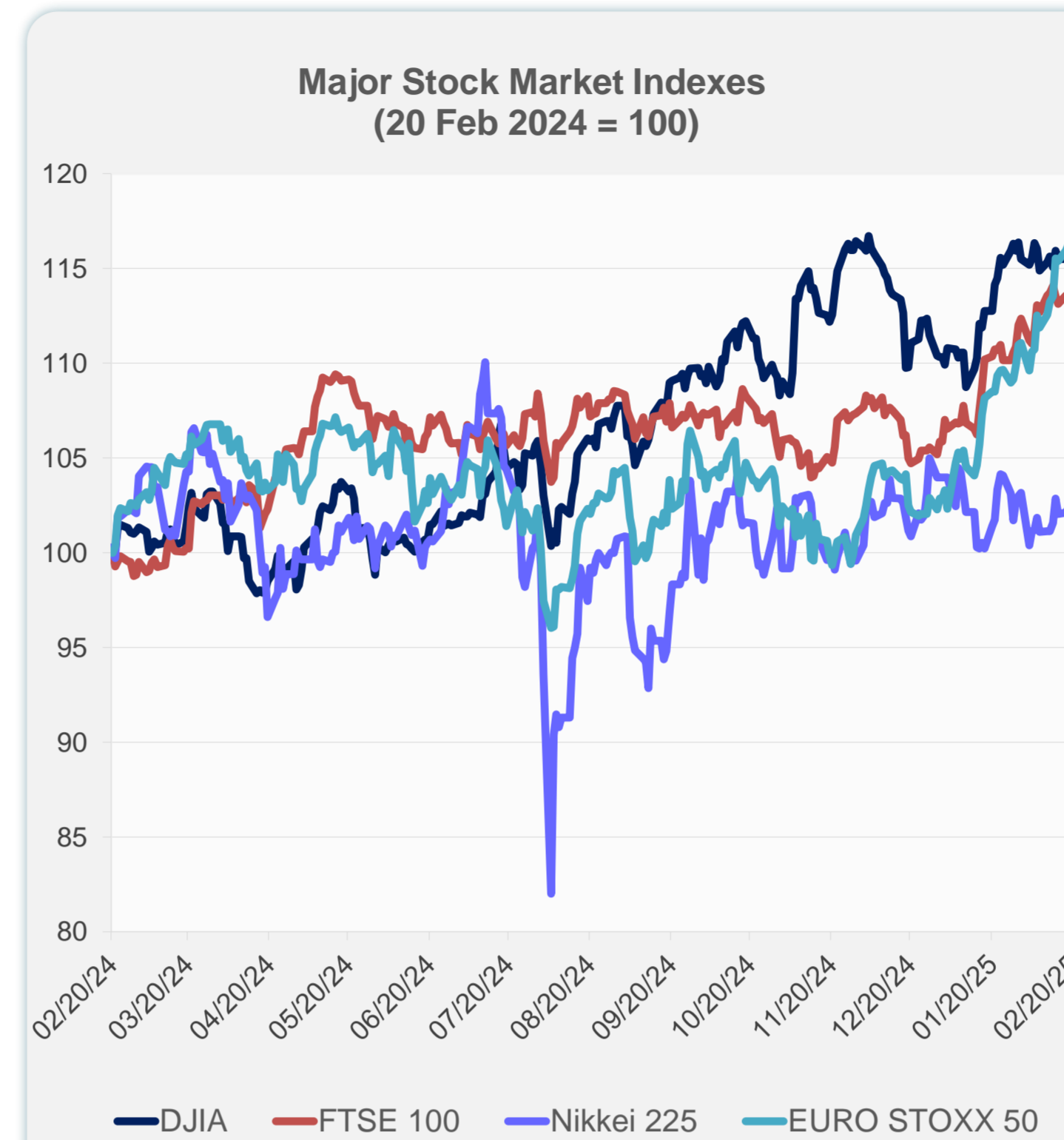


Source: Haver Analytics.

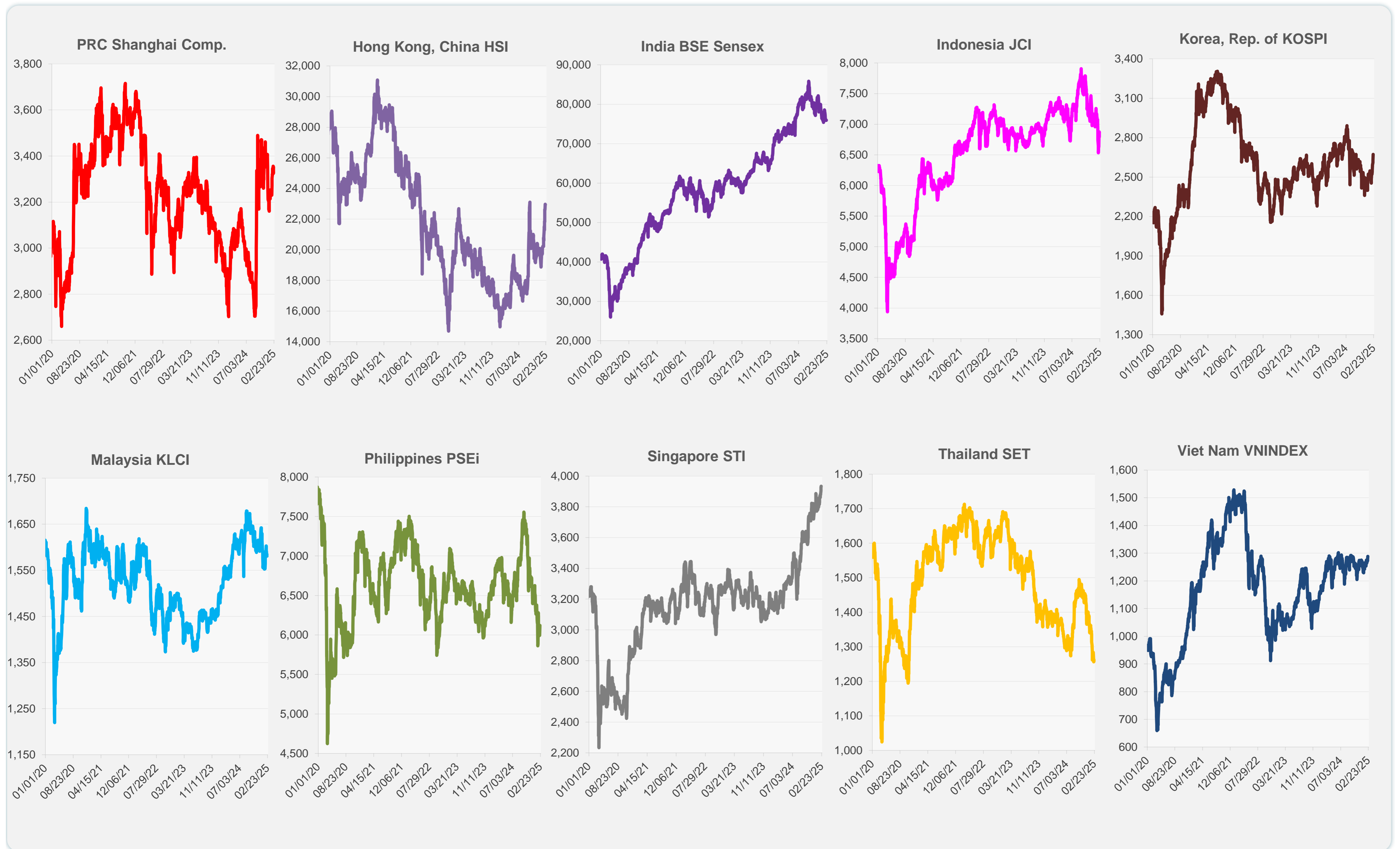
# Daily Market Watch STOCK INDEXES

20 February 2025, 9:00 AM Manila

	Latest Closing	% change from Previous Day	% change from 01-Jan-25
US Dow Jones Ind Avg	44,627.59	0.16	4.90
US NASDAQ	20,056.25	0.07	3.86
US S&P 500	6,144.15	0.24	4.46
UK FTSE 100	8,712.53	-0.62	6.60
EURO STOXX 50	5,461.17	-1.31	11.54
Japan NIKKEI 225	39,164.61	-0.27	-1.83
Bangladesh DSEX	5,192.44	-0.21	-0.49
PRC Shanghai Comp.	3,351.54	0.81	-0.01
Hong Kong, China HSI	22,944.24	-0.14	14.38
India BSE Sensex	75,939.18	-0.04	-3.27
Indonesia JCI	6,794.87	-1.14	-4.03
Korea, Rep. of KOSPI	2,671.52	1.70	11.34
Malaysia KLCI	1,580.88	-0.25	-3.74
Pakistan KSE 100	113,342.43	0.22	-3.13
Philippines PSEi	6,119.88	0.41	-6.26
Singapore STI	3,934.04	0.22	3.87
Sri Lanka CSEALL	17,074.02	-0.70	7.08
Taipei, China TWSE	23,604.08	-0.26	2.47
Thailand SET	1,262.27	0.38	-9.85
Viet Nam VNINDEX	1,288.56	0.82	1.72



Sources: ADB calculations using data from CEIC Data Company and Haver Analytics.



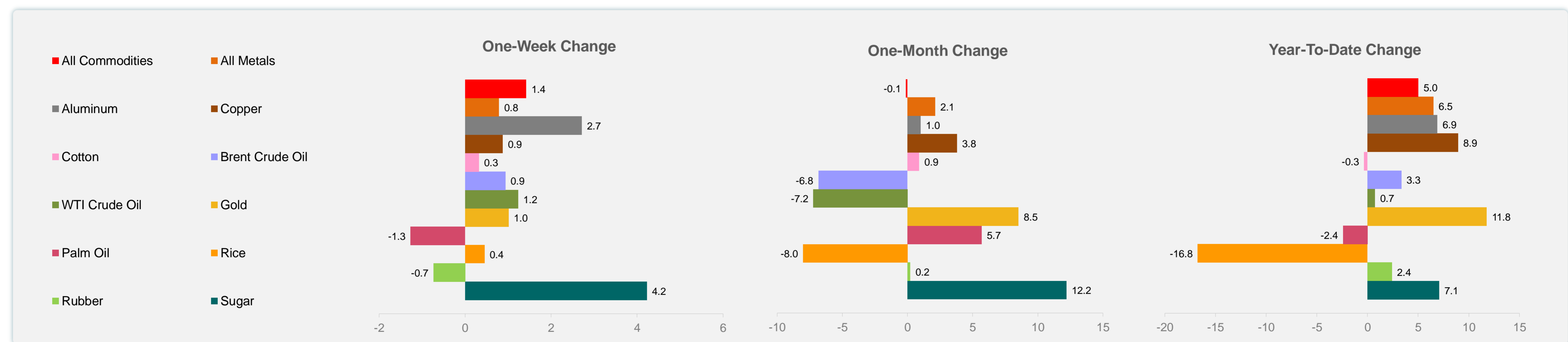
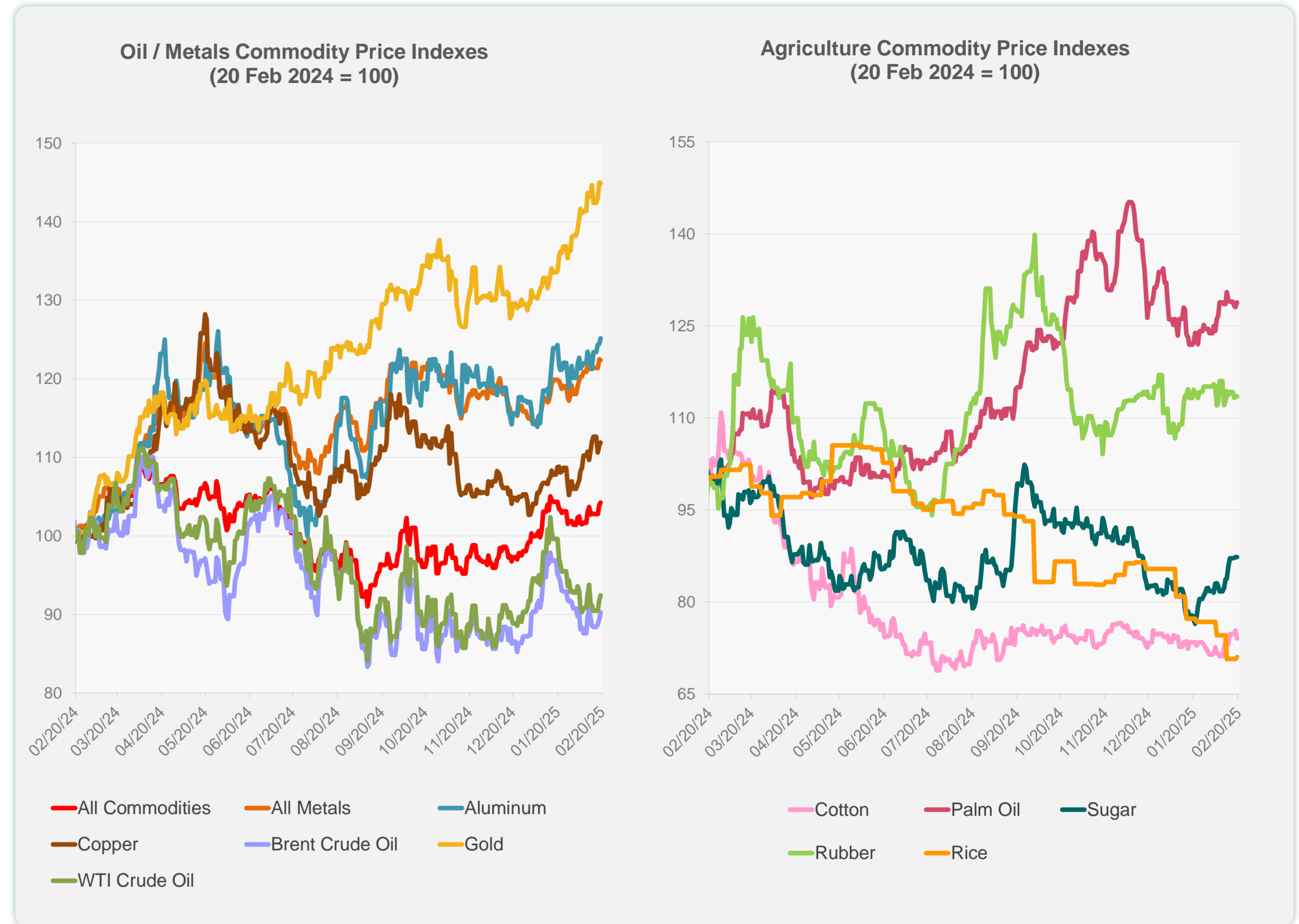
Sources: CEIC Data Company and Haver Analytics.

Daily Market Watch  
**COMMODITY PRICES**

20 February 2025, 9:00 AM Manila

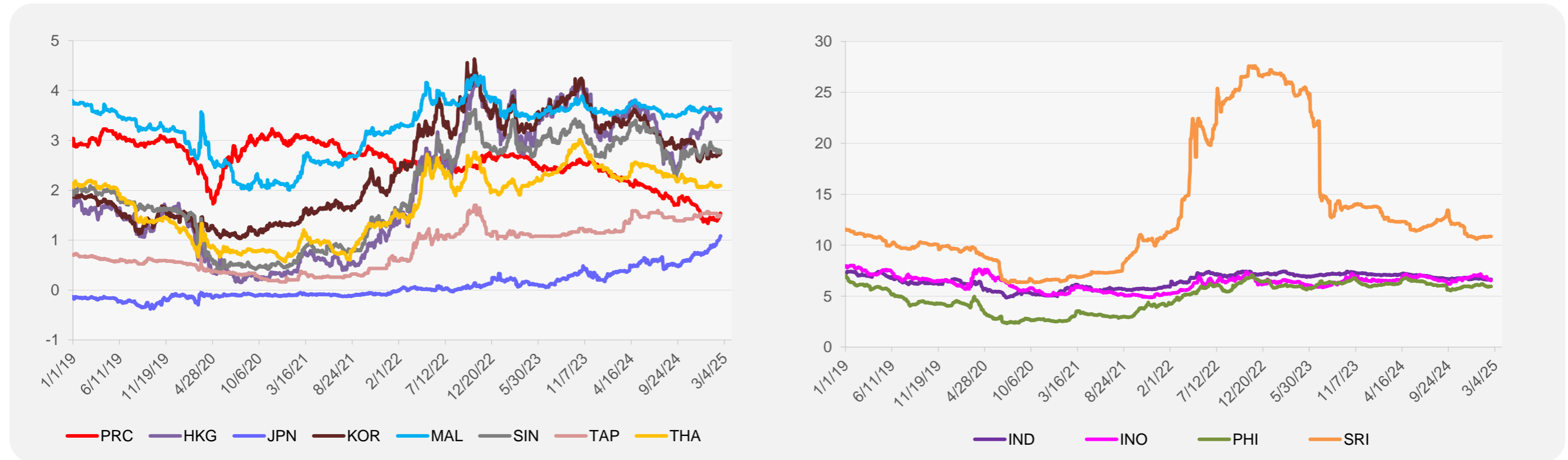
	Unit	Latest Closing	% change from Previous Day	% change from 01-Jan-25
S&P All Commodities	US\$	577.26	0.23	5.03
S&P All Metals	US\$	327.39	-0.06	6.51
Aluminum	US\$/metric ton	2,701.12	0.57	6.90
Copper	US\$/metric ton	9,425.91	0.26	8.94
Cotton	US cents/lb	65.68	-1.71	-0.33
Brent Crude Oil	US\$/barrel	76.59	0.92	3.35
WTI Crude Oil	US\$/barrel	72.25	0.56	0.74
Gold	US\$/troy oz	2,933.39	-0.09	11.77
Palm Oil	US\$/metric tonne	1,073.53	0.63	-2.42
Rice <sup>1</sup>	US\$/metric ton	447.00	0.45	-16.76
Rubber <sup>2</sup>	US\$/kg	242.50	-0.04	2.41
Sugar	US cents/lb	19.49	0.00	7.09

<sup>1</sup> Latest closing price from 19 February 2025.  
<sup>2</sup> Singapore Exchange, Ribbed Smoked Sheet Rubber.

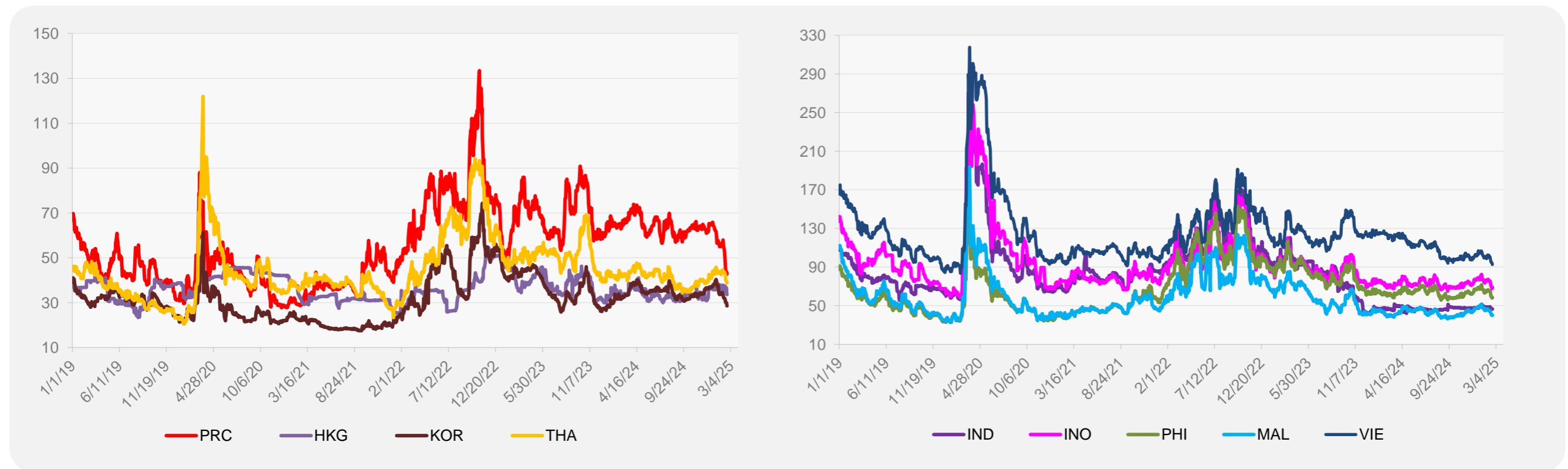


Source: ADB calculations using data from Bloomberg.

### 5-YEAR LOCAL CURRENCY GOVERNMENT BOND YIELDS (%)



### 5-YEAR CREDIT DEFAULT SWAP<sup>1</sup>



<sup>1</sup> In USD and based on sovereign bonds.  
Source: ADB calculations using data from Bloomberg.