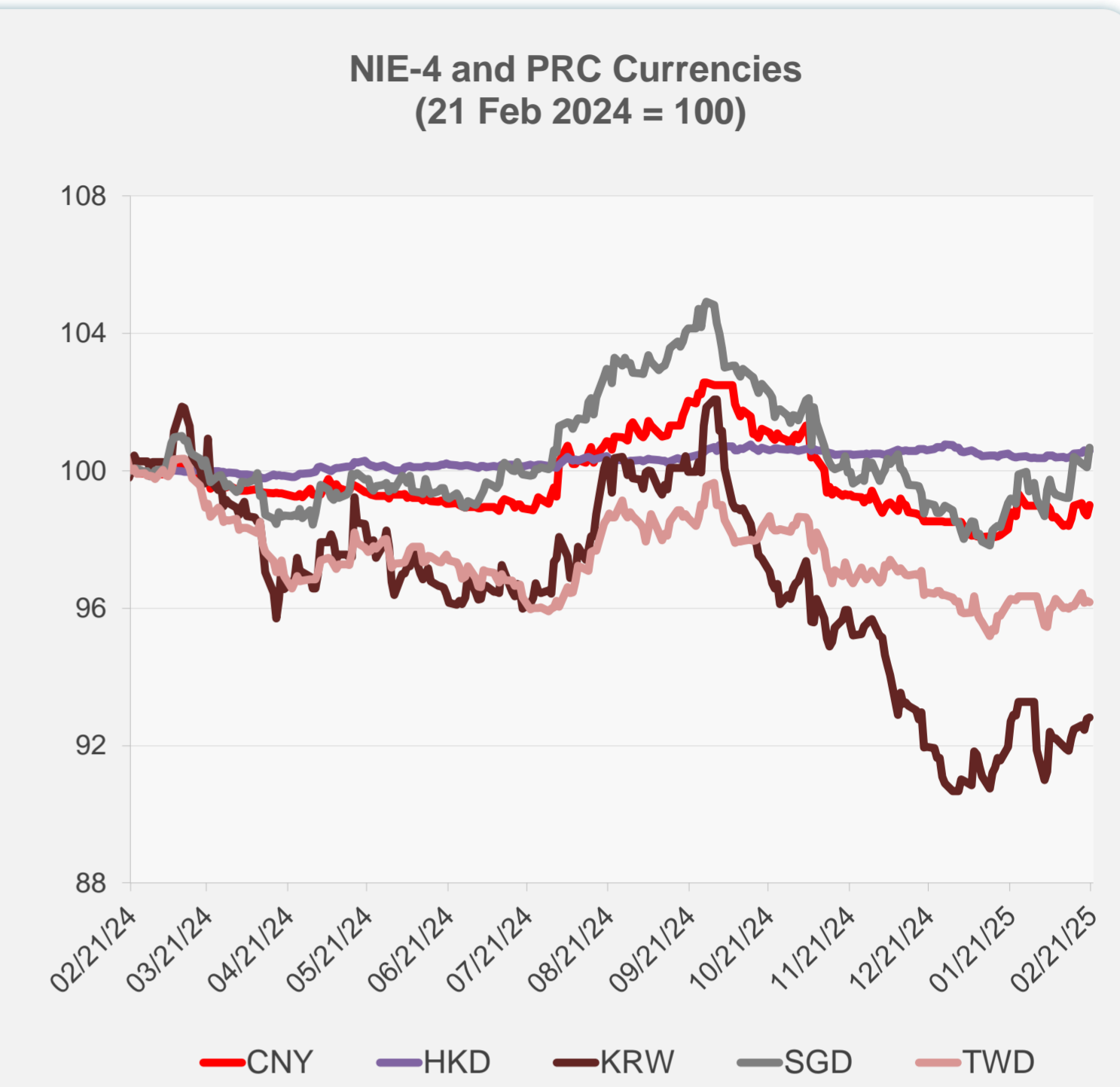
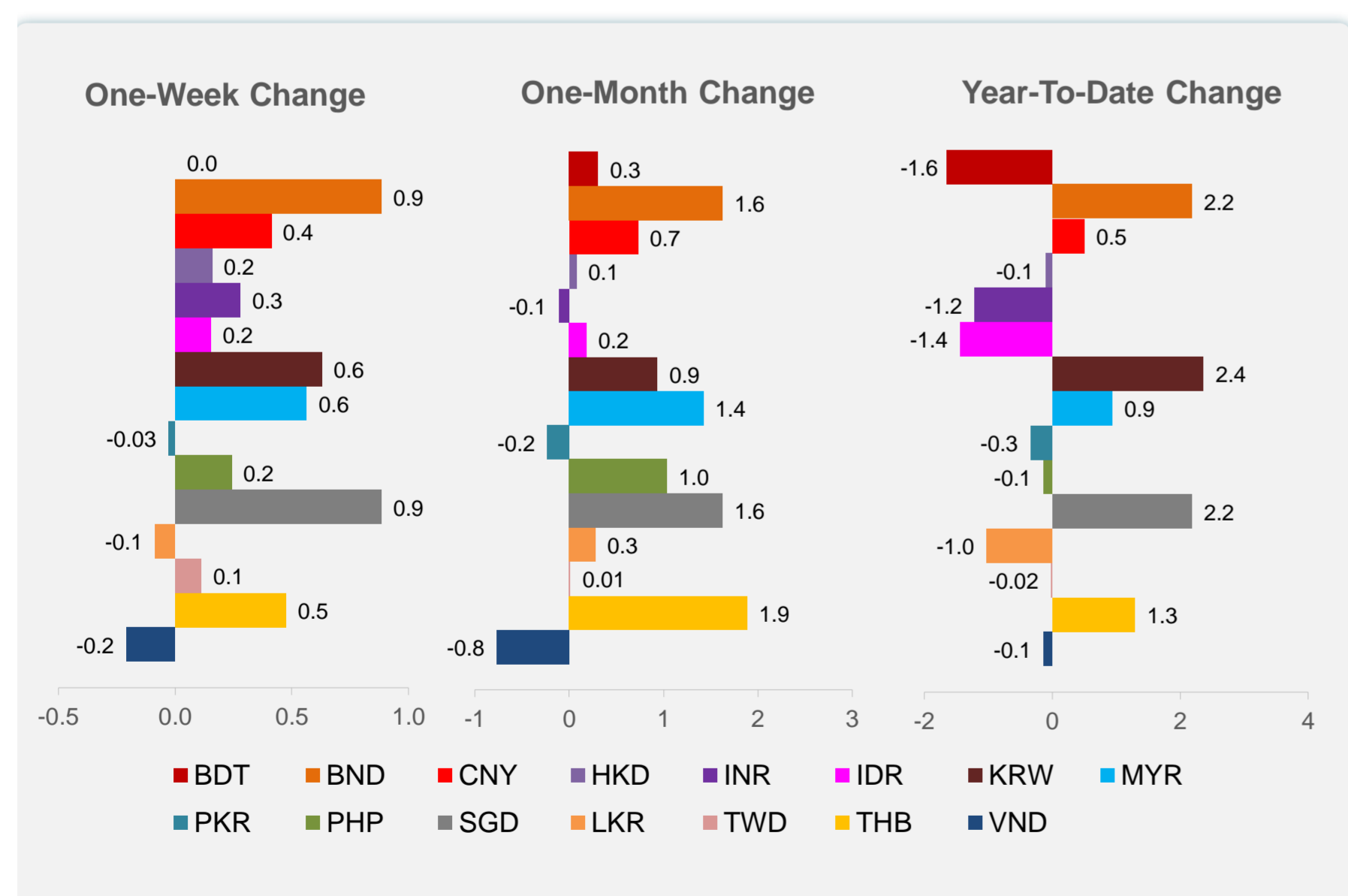
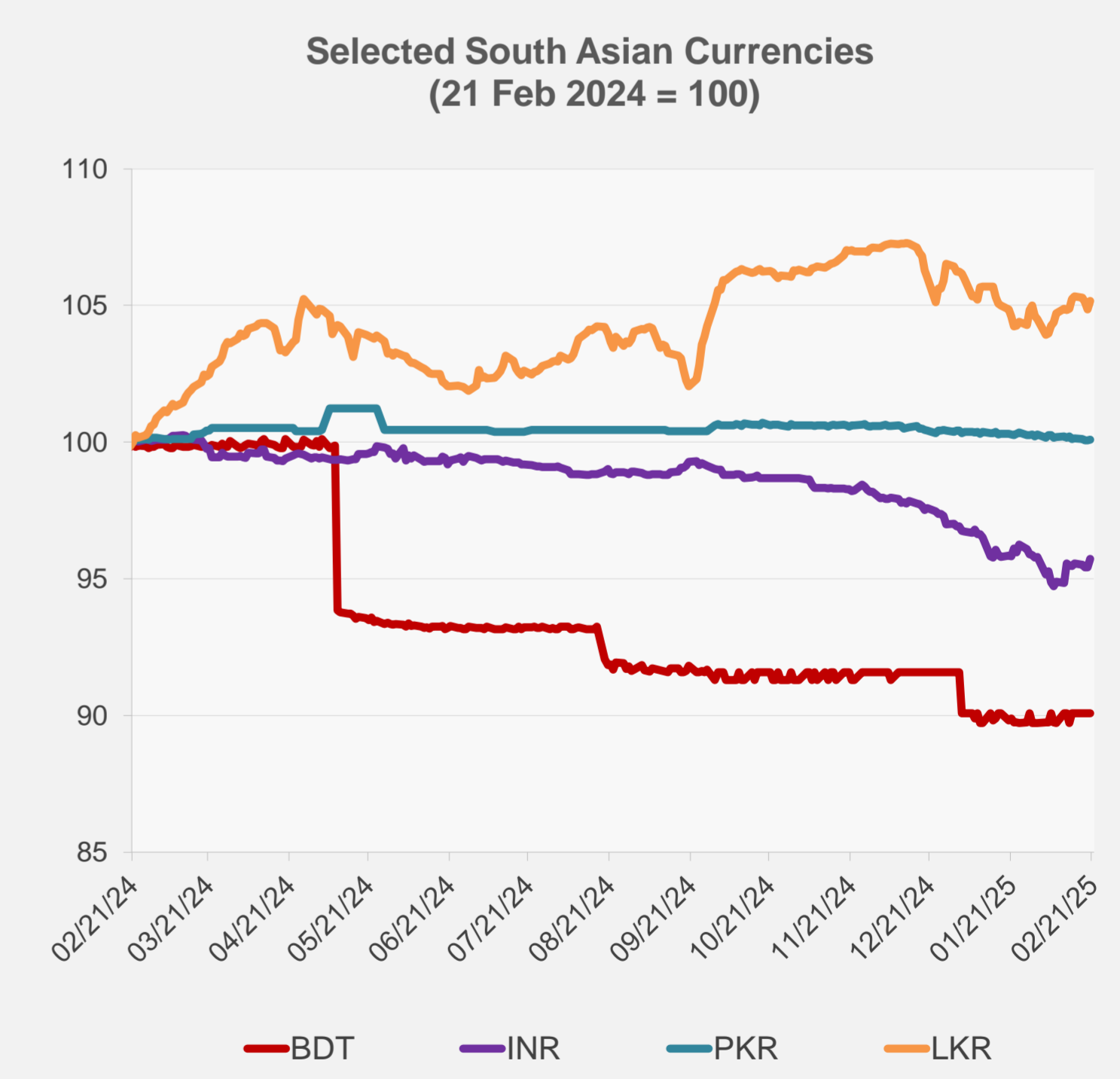
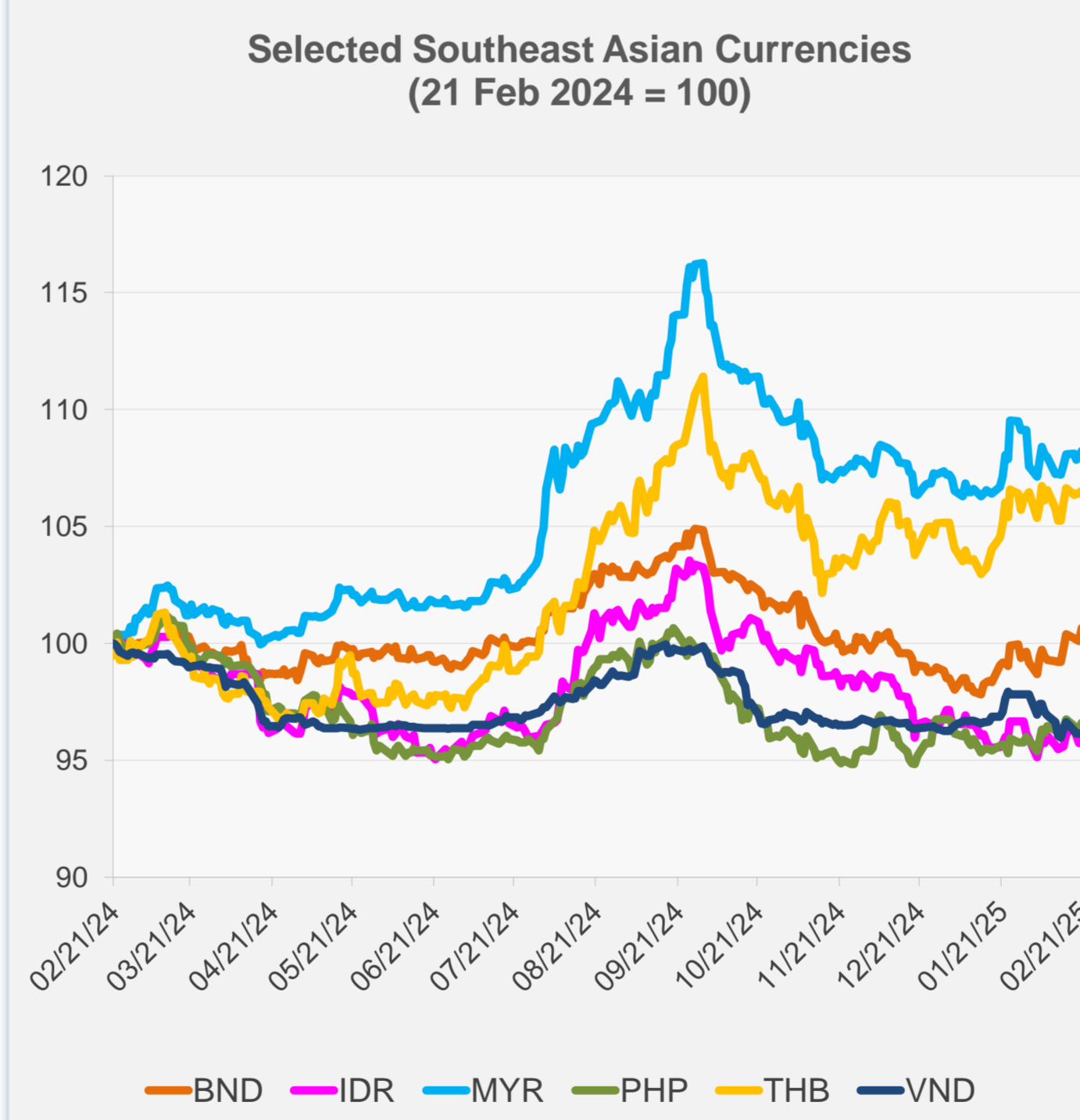


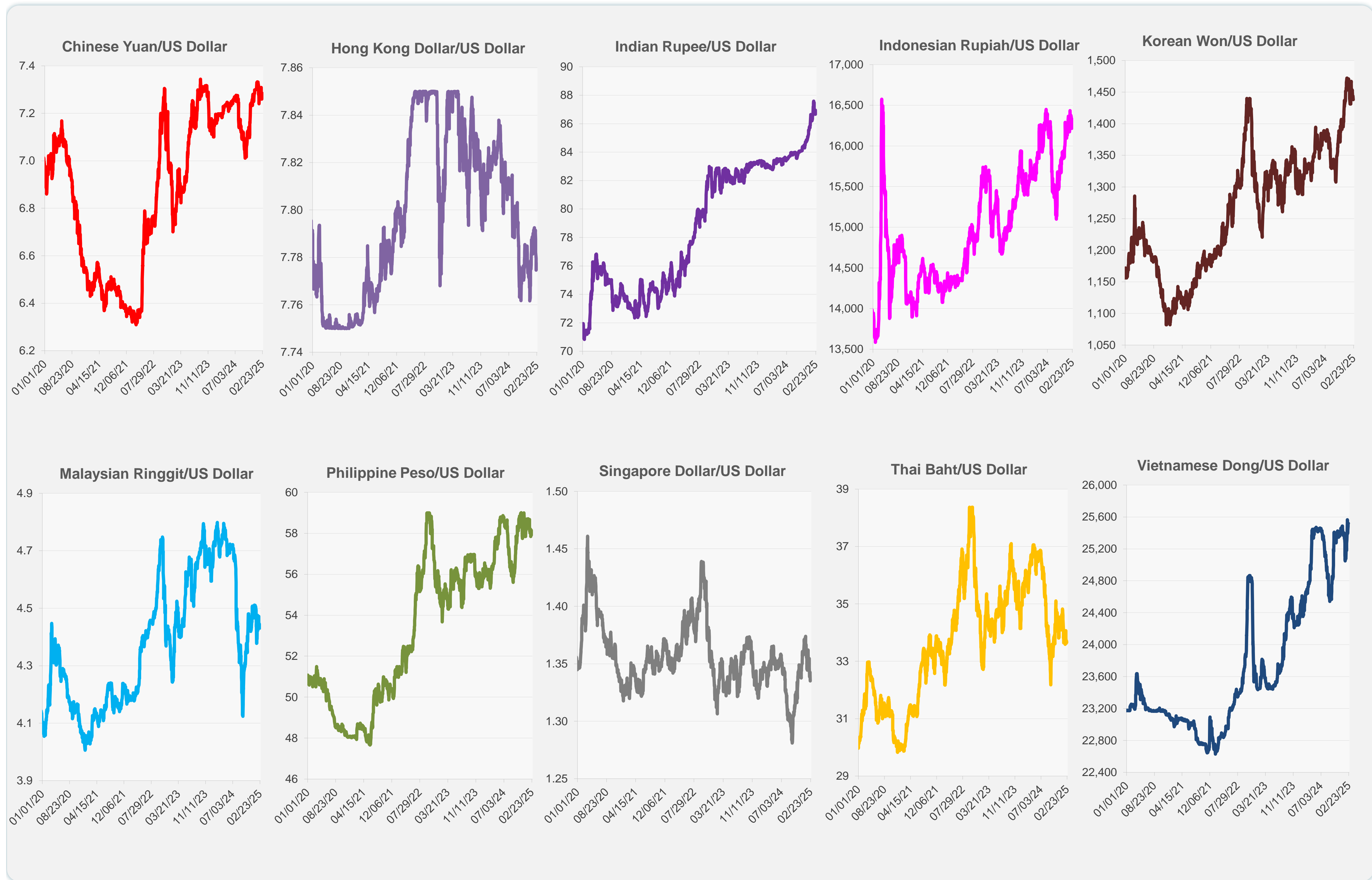
	Latest Closing	% change from Previous Day	% change from 01-Jan-25
Euro	0.95	0.48	1.15
Japanese yen (JPY)	149.49	1.28	5.13
Bangladeshi taka (BDT)	121.50	0.00	-1.65
Brunei dollar (BND)	1.34	0.56	2.18
Chinese yuan (CNY)	7.26	0.31	0.50
Hong Kong dollar (HKD)	7.78	0.03	-0.10
Indian rupee (INR)	86.66	0.34	-1.21
Indonesian rupiah (IDR)	16,330.00	0.02	-1.44
Korean won (KRW)	1,438.15	0.04	2.36
Malaysian ringgit (MYR)	4.43	0.26	0.94
Pakistan rupee (PKR)	279.33	0.02	-0.34
Philippine peso (PHP)	57.92	0.29	-0.13
Singapore dollar (SGD)	1.34	0.56	2.18
Sri Lanka rupee (LKR)	296.03	0.30	-1.02
Taipei,China NT dollar (TWD)	32.79	-0.05	-0.02
Thai baht (THB)	33.66	0.09	1.29
Vietnamese dong (VND)	25,518.50	0.01	-0.13



NIE = Newly Industrialized Economies



Note: Negative/Decreasing values indicate depreciation of local currency, and positive/increasing values indicate appreciation.
Source: ADB calculations using data from Haver Analytics.

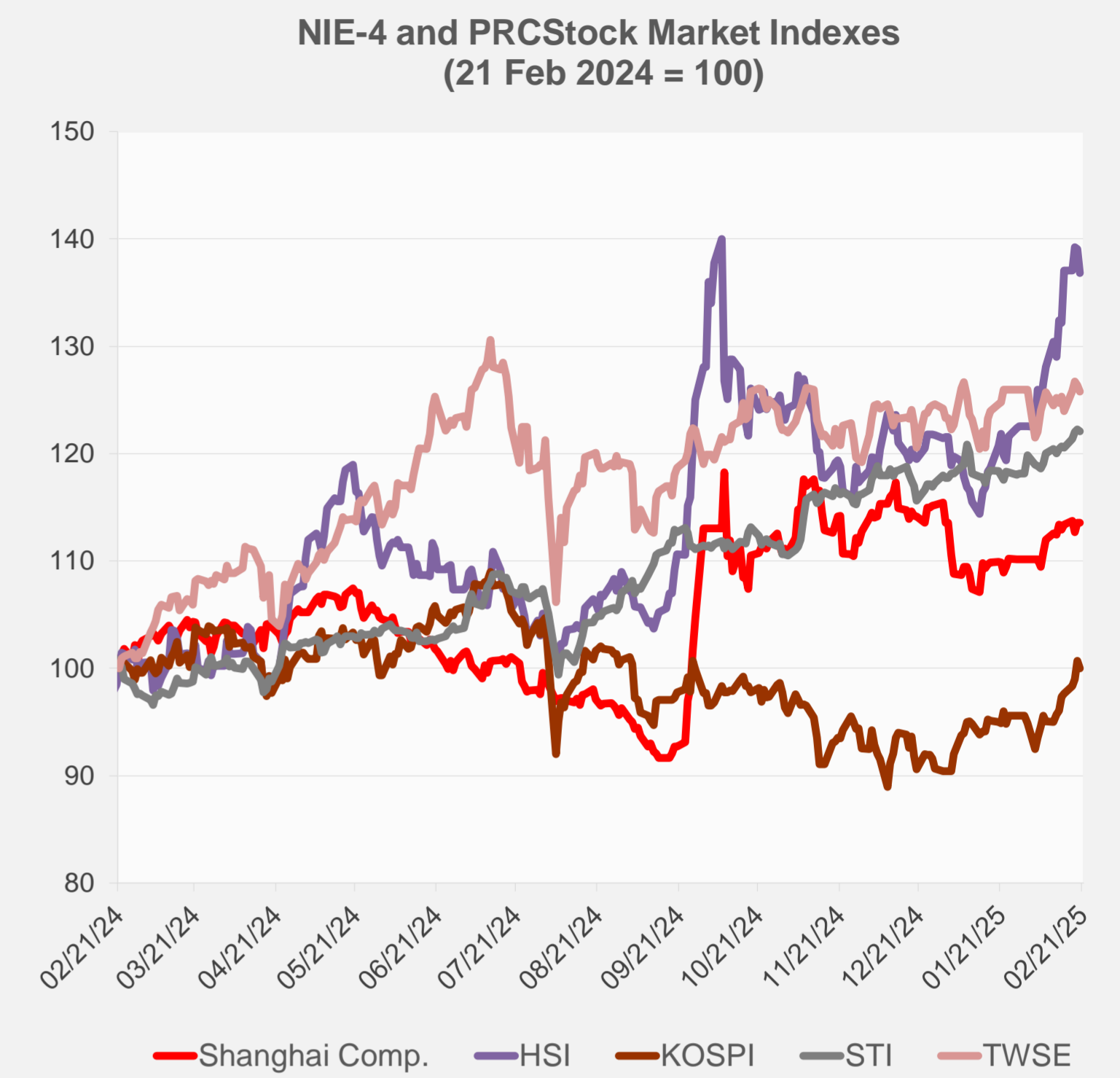
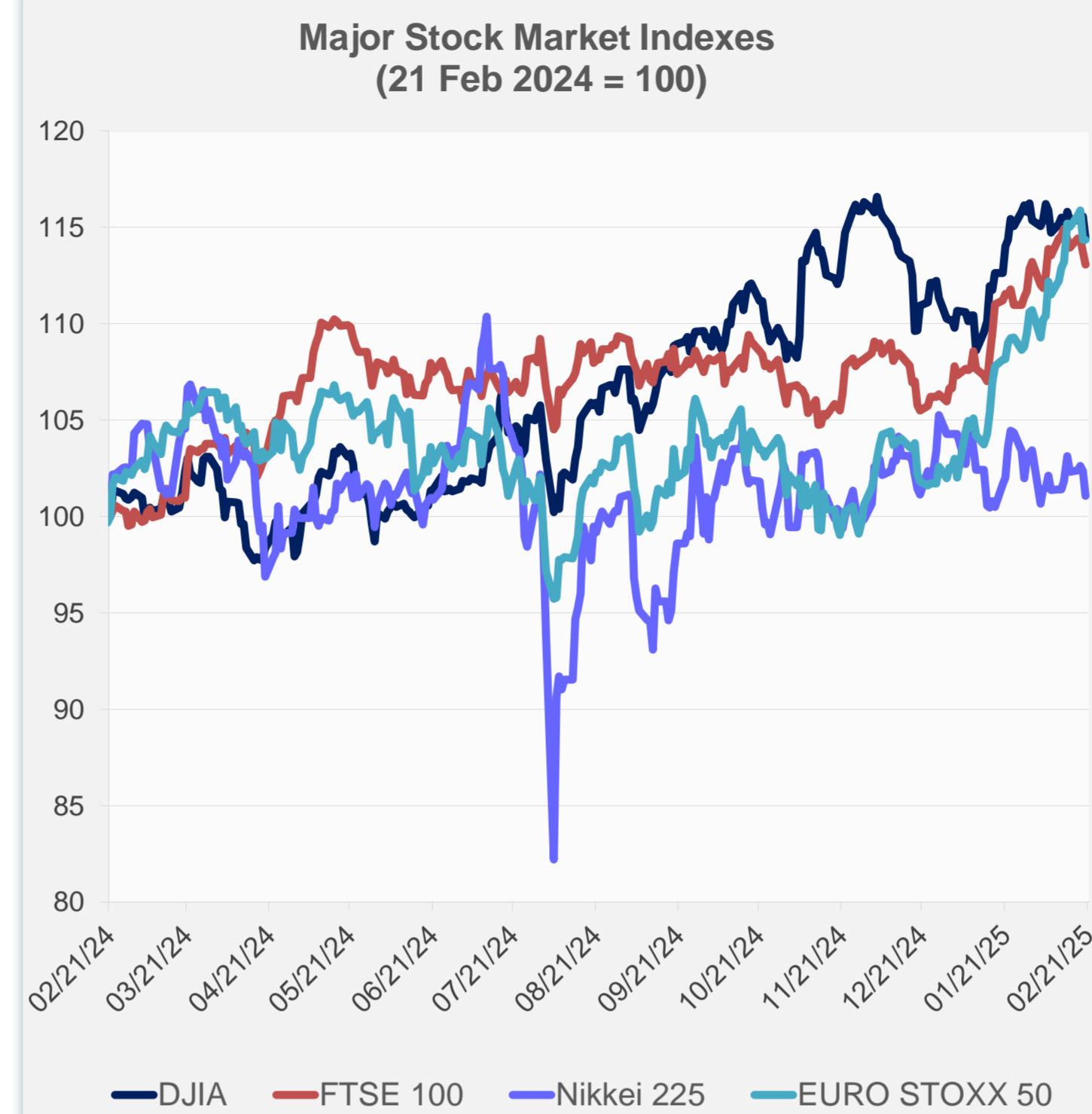


Source: Haver Analytics.

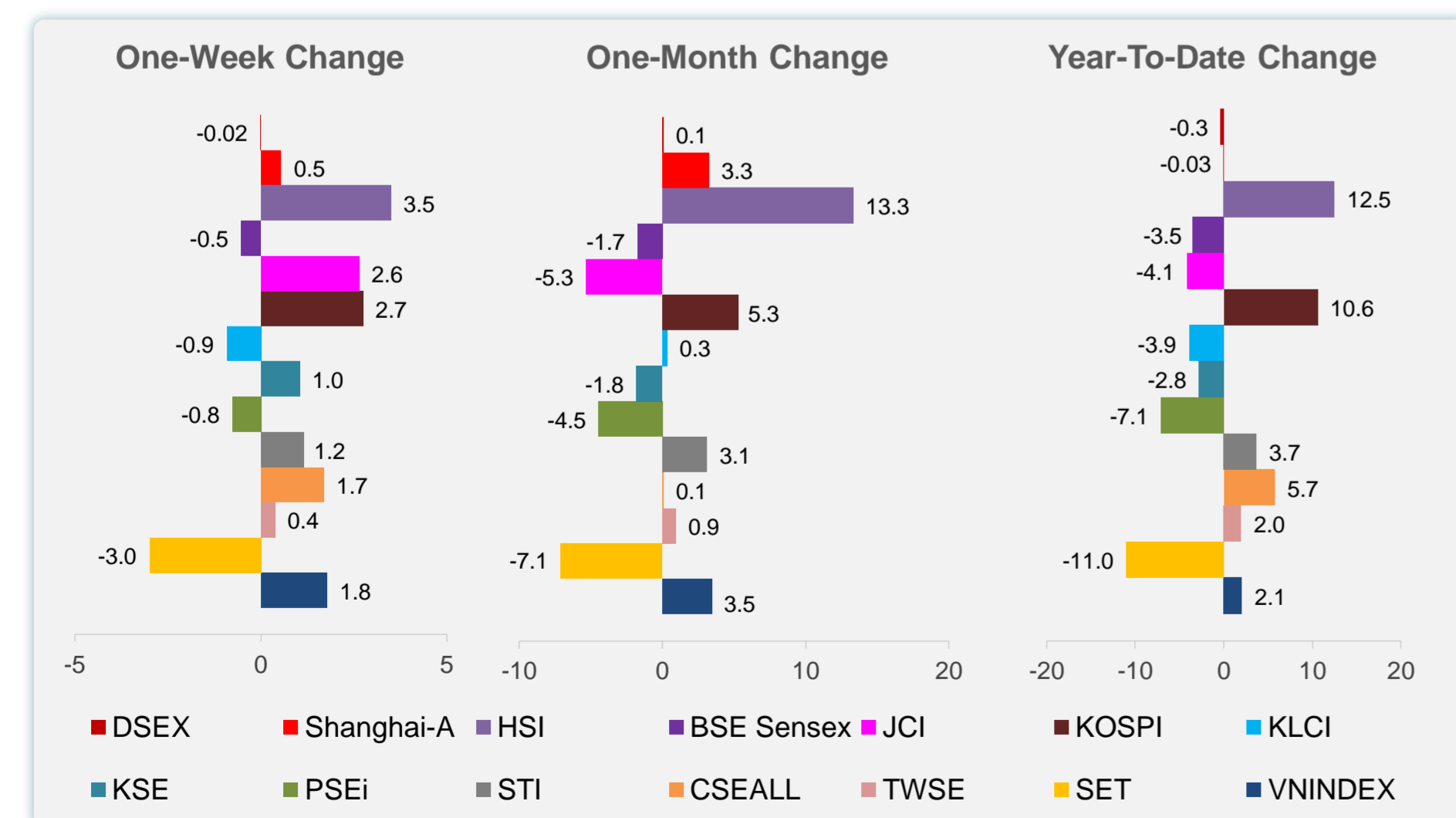
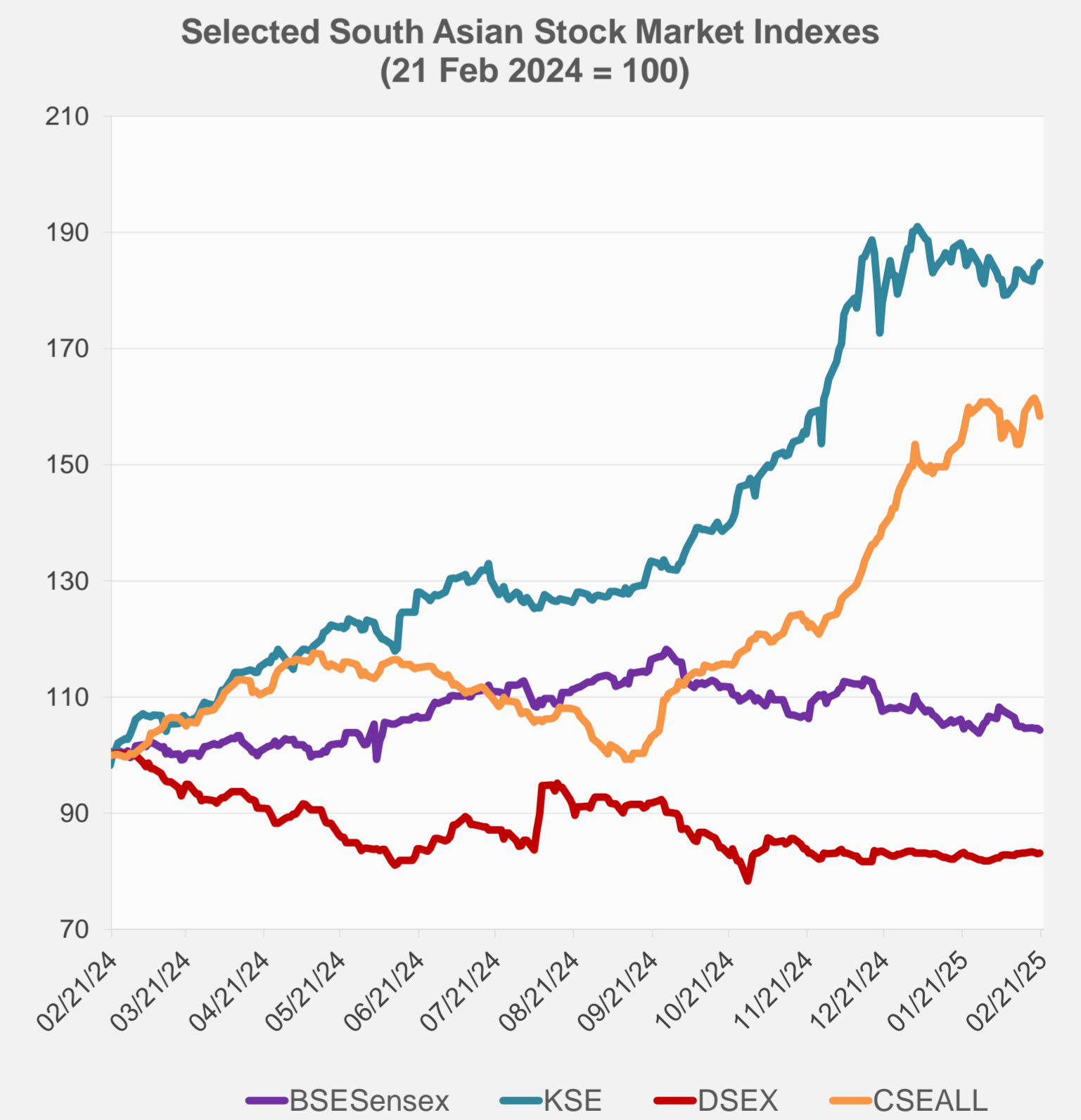
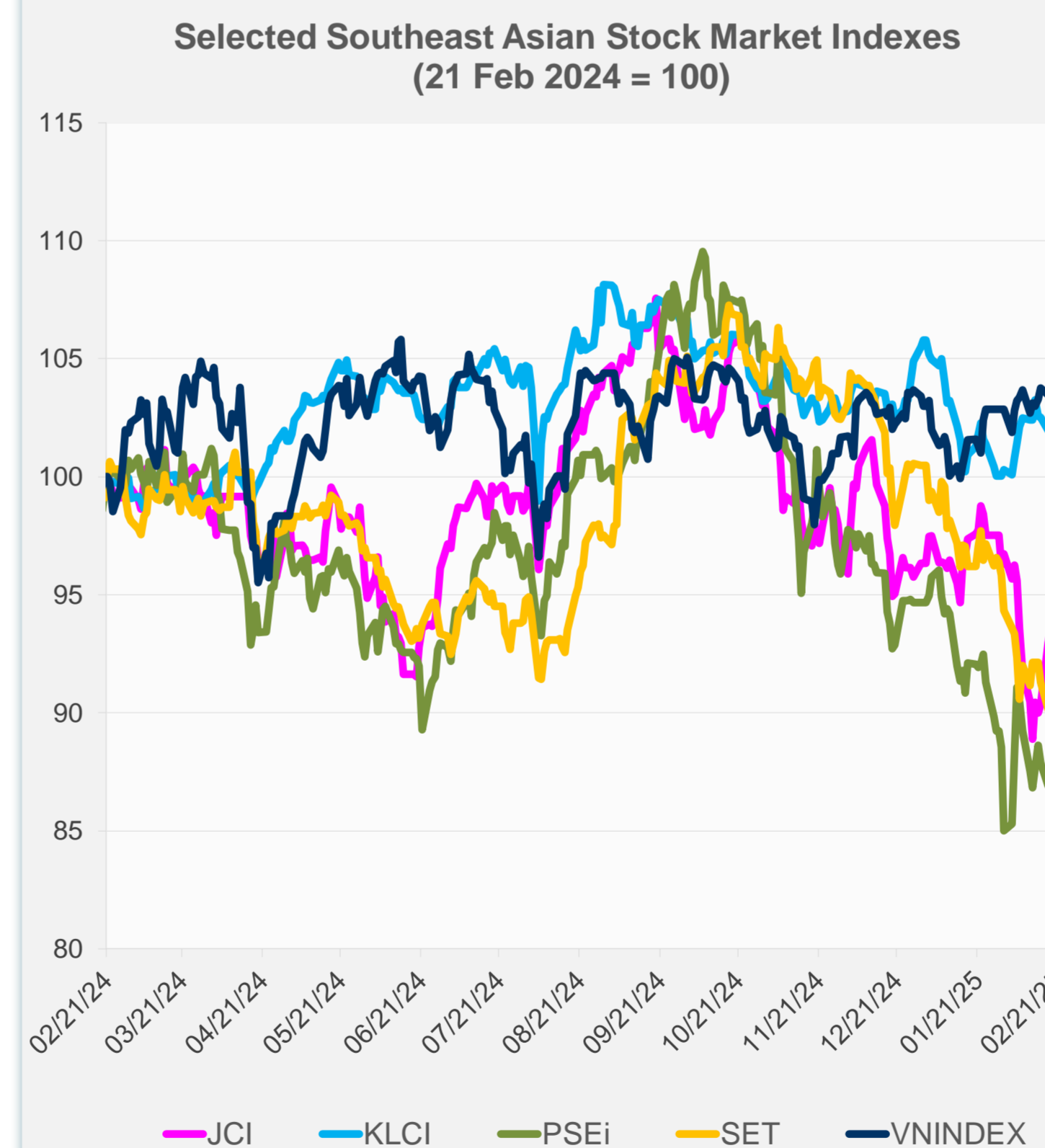
Daily Market Watch STOCK INDEXES

21 February 2025, 9:00 AM Manila

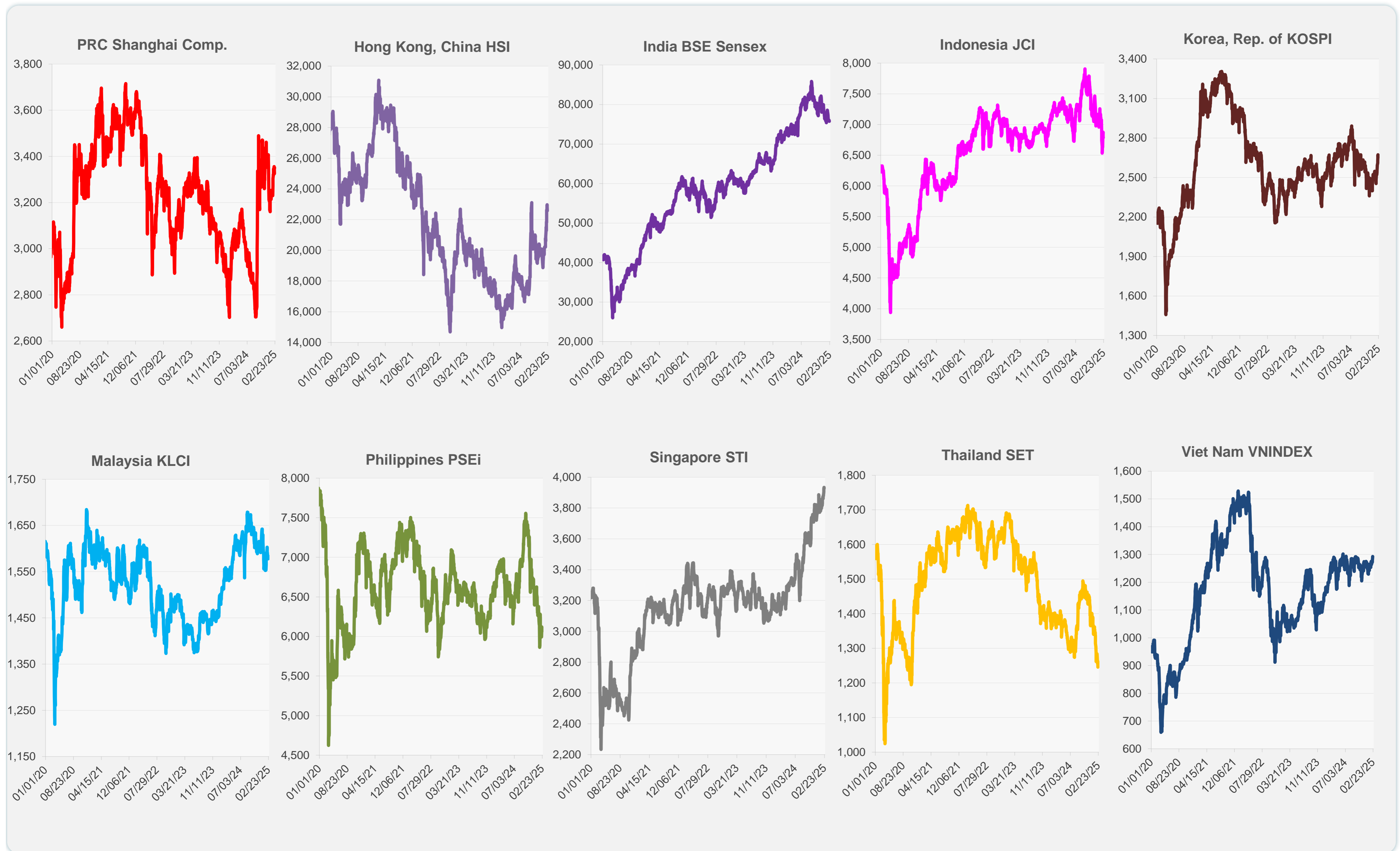
	Latest Closing	% change from Previous Day	% change from 01-Jan-25
US Dow Jones Ind Avg	44,176.65	-1.01	3.84
US NASDAQ	19,962.36	-0.47	3.37
US S&P 500	6,117.52	-0.43	4.01
UK FTSE 100	8,662.97	-0.57	5.99
EURO STOXX 50	5,461.03	0.00	11.54
Japan NIKKEI 225	38,678.04	-1.24	-3.05
Bangladesh DSEX	5,200.37	0.15	-0.34
PRC Shanghai Comp.	3,350.78	-0.02	-0.03
Hong Kong, China HSI	22,576.98	-1.60	12.55
India BSE Sensex	75,735.96	-0.27	-3.53
Indonesia JCI	6,788.04	-0.10	-4.12
Korea, Rep. of KOSPI	2,654.06	-0.65	10.61
Malaysia KLCI	1,577.67	-0.20	-3.94
Pakistan KSE 100	113,739.15	0.35	-2.79
Philippines PSEi	6,066.63	-0.87	-7.08
Singapore STI	3,927.51	-0.17	3.69
Sri Lanka CSEALL	16,858.97	-1.26	5.73
Taipei, China TWSE	23,487.46	-0.49	1.96
Thailand SET	1,245.61	-1.32	-11.04
Viet Nam VNINDEX	1,292.98	0.34	2.07



NIE = Newly Industrialized Economies



Sources: ADB calculations using data from CEIC Data Company and Haver Analytics.



Sources: CEIC Data Company and Haver Analytics.

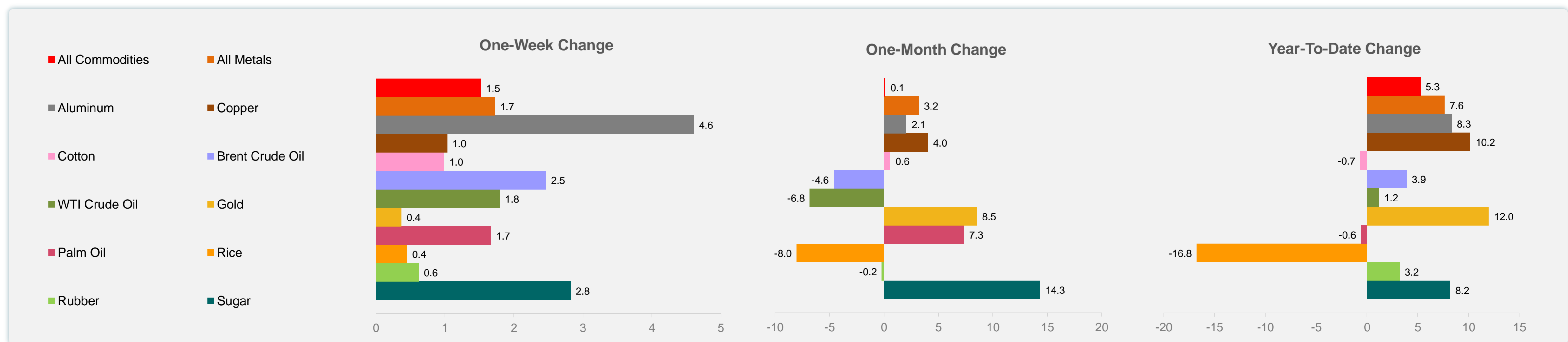
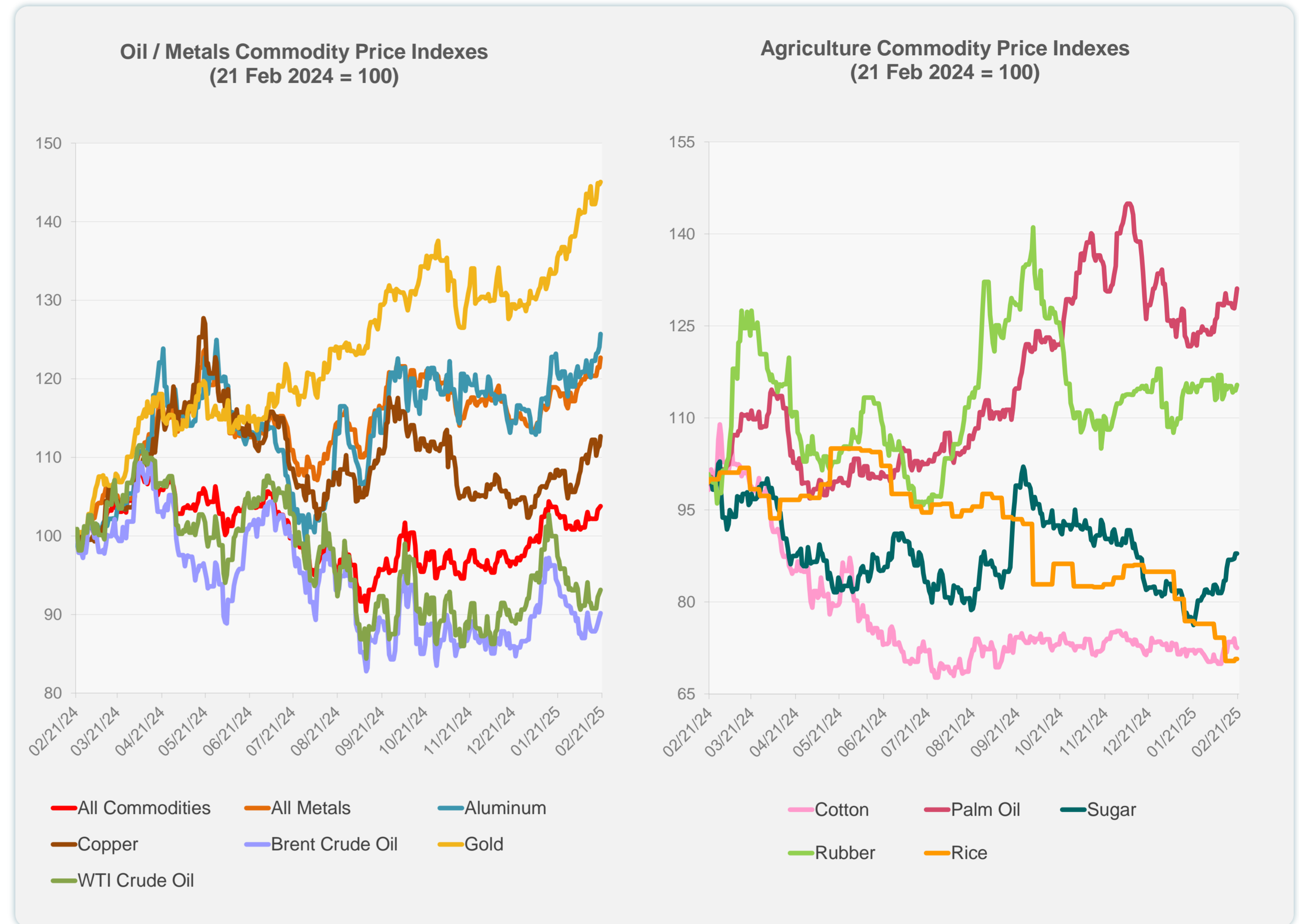
Daily Market Watch
COMMODITY PRICES

21 February 2025, 9:00 AM Manila

	Unit	Latest Closing	% change from Previous Day	% change from 01-Jan-25
S&P All Commodities	US\$	578.56	0.22	5.26
S&P All Metals	US\$	330.82	1.05	7.63
Aluminum	US\$/metric ton	2,737.51	1.35	8.34
Copper	US\$/metric ton	9,532.10	1.13	10.16
Cotton	US cents/lb	65.47	-0.32	-0.65
Brent Crude Oil	US\$/barrel	77.00	0.54	3.91
WTI Crude Oil	US\$/barrel	72.57	0.44	1.19
Gold	US\$/troy oz	2,938.98	0.19	11.98
Palm Oil	US\$/metric tonne	1,093.80	1.53	-0.58
Rice ¹	US\$/metric ton	447.00	0.00	-16.76
Rubber ²	US\$/kg	244.40	0.78	3.21
Sugar	US cents/lb	19.69	0.00	8.19

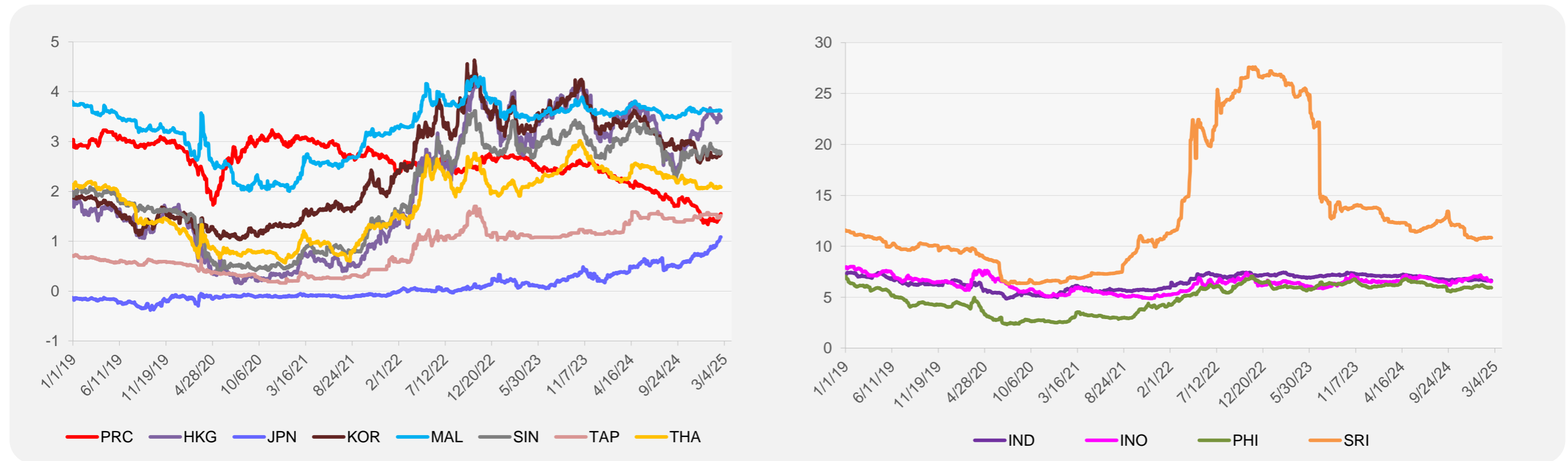
¹ Latest closing price from 19 February 2025.

² Singapore Exchange, Ribbed Smoked Sheet Rubber.

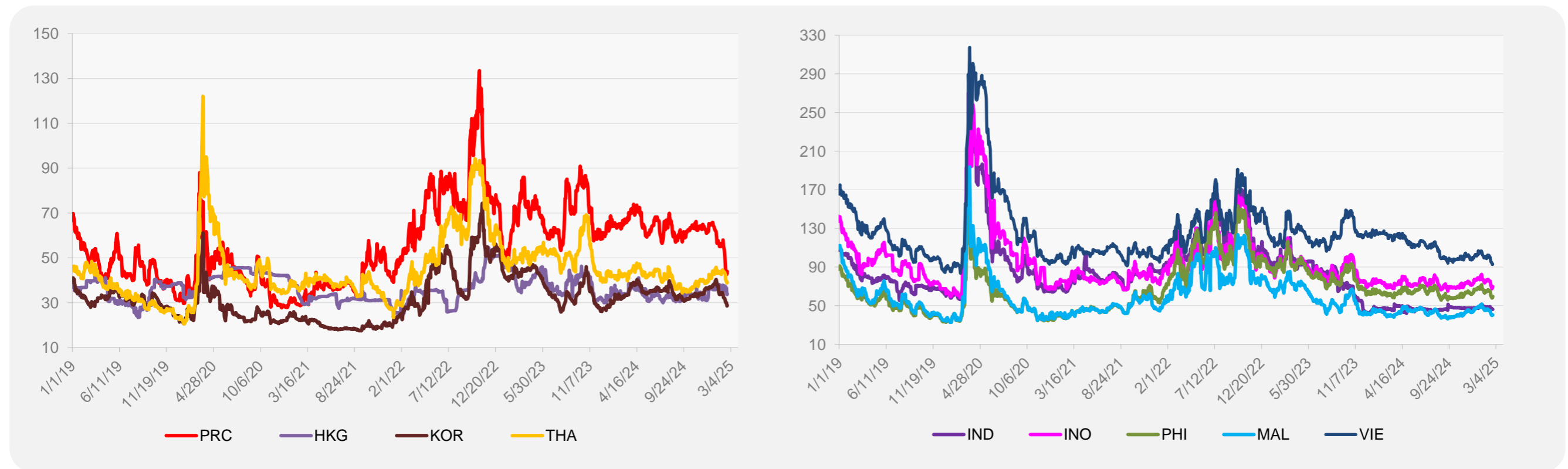


Source: ADB calculations using data from Bloomberg.

5-YEAR LOCAL CURRENCY GOVERNMENT BOND YIELDS (%)



5-YEAR CREDIT DEFAULT SWAP¹



¹ In USD and based on sovereign bonds.
Source: ADB calculations using data from Bloomberg.