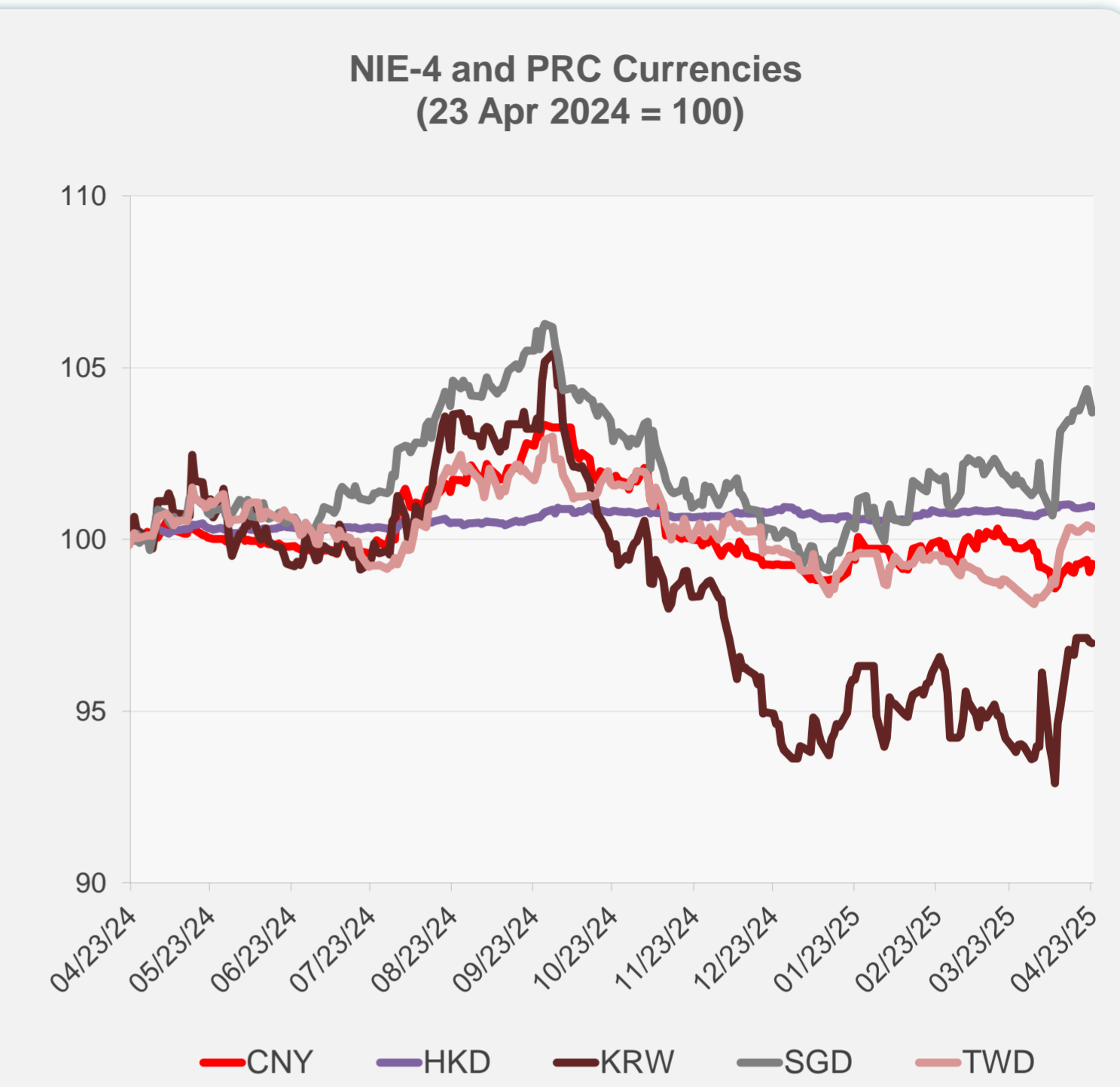
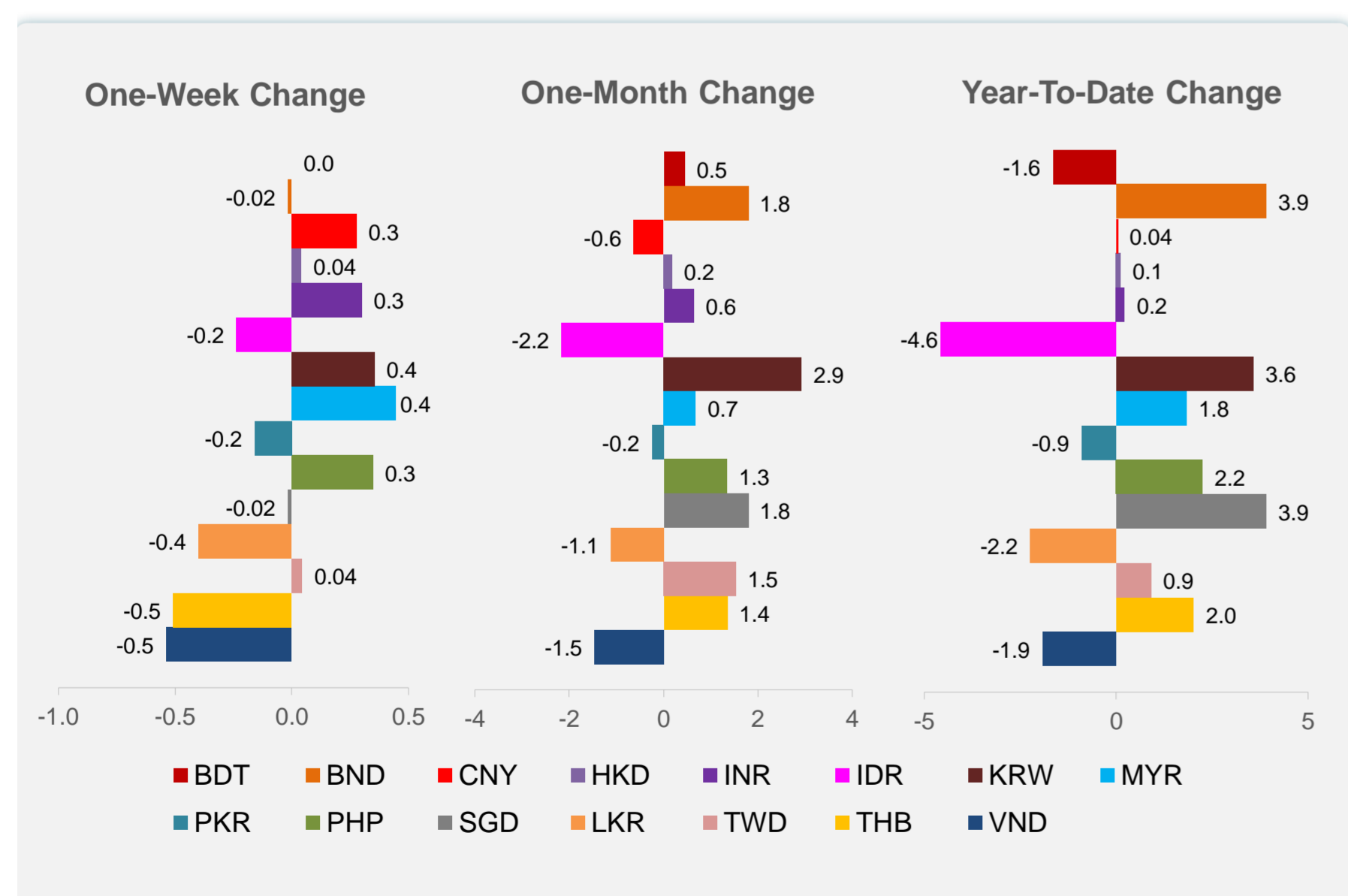
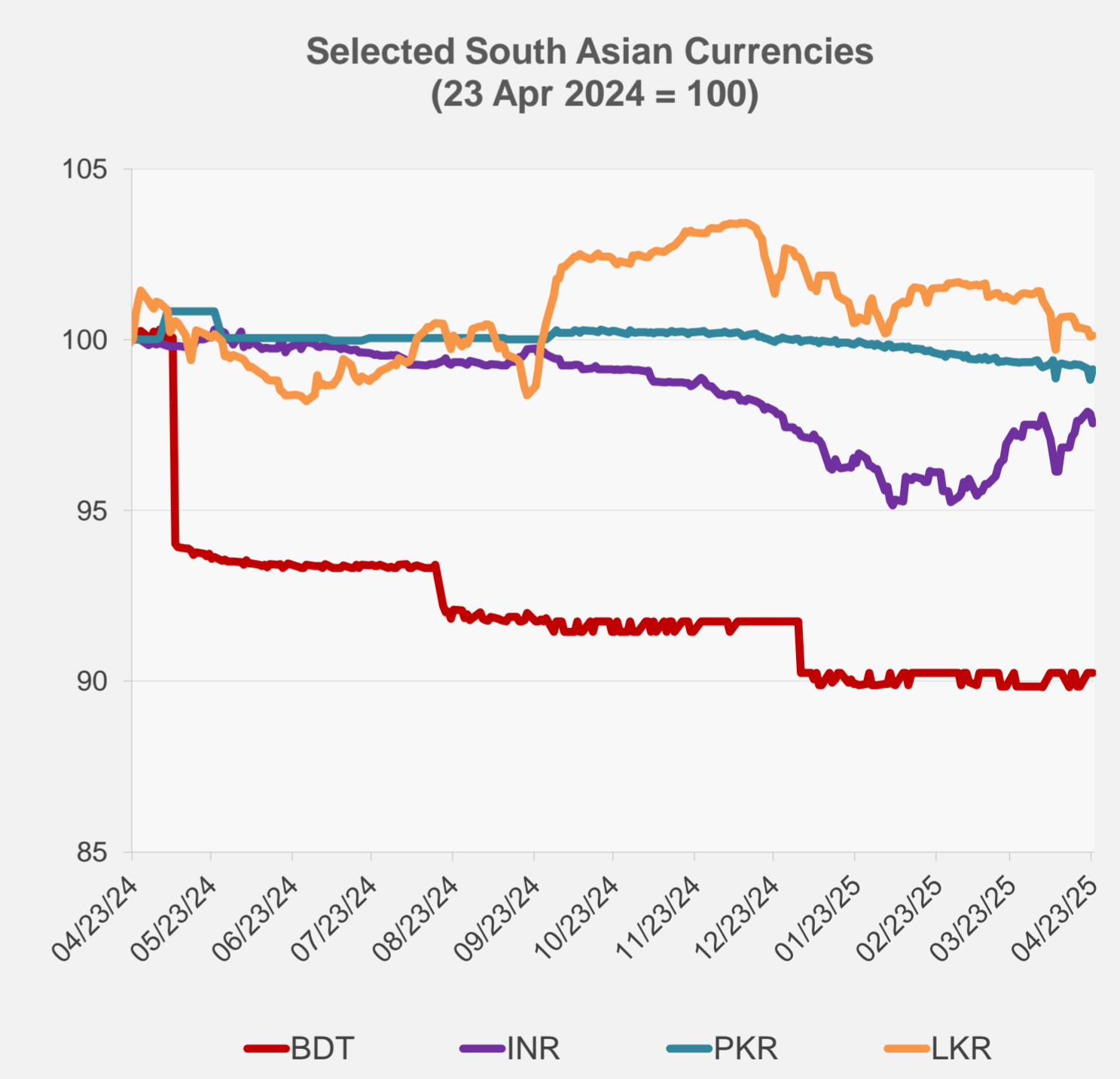
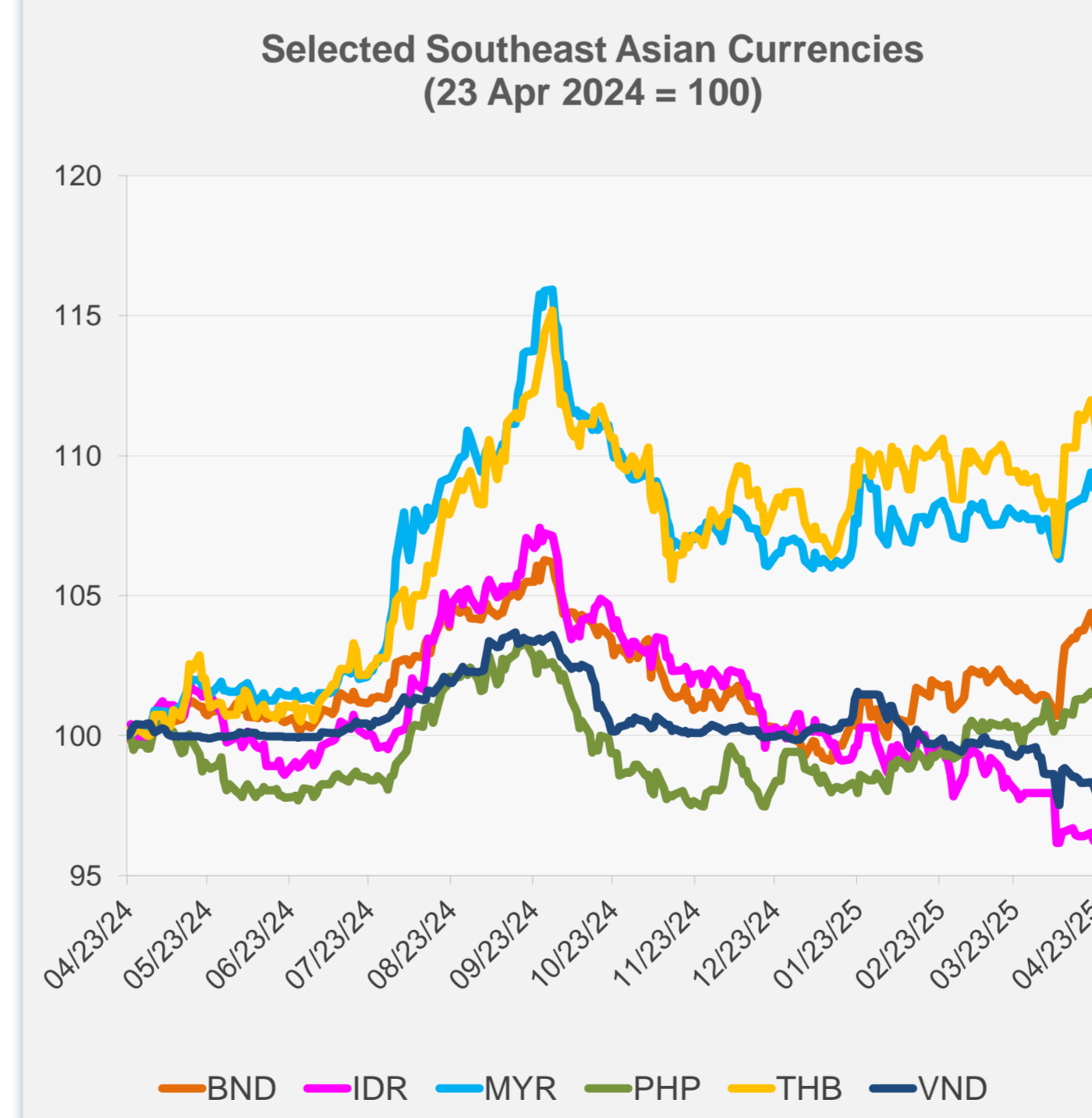


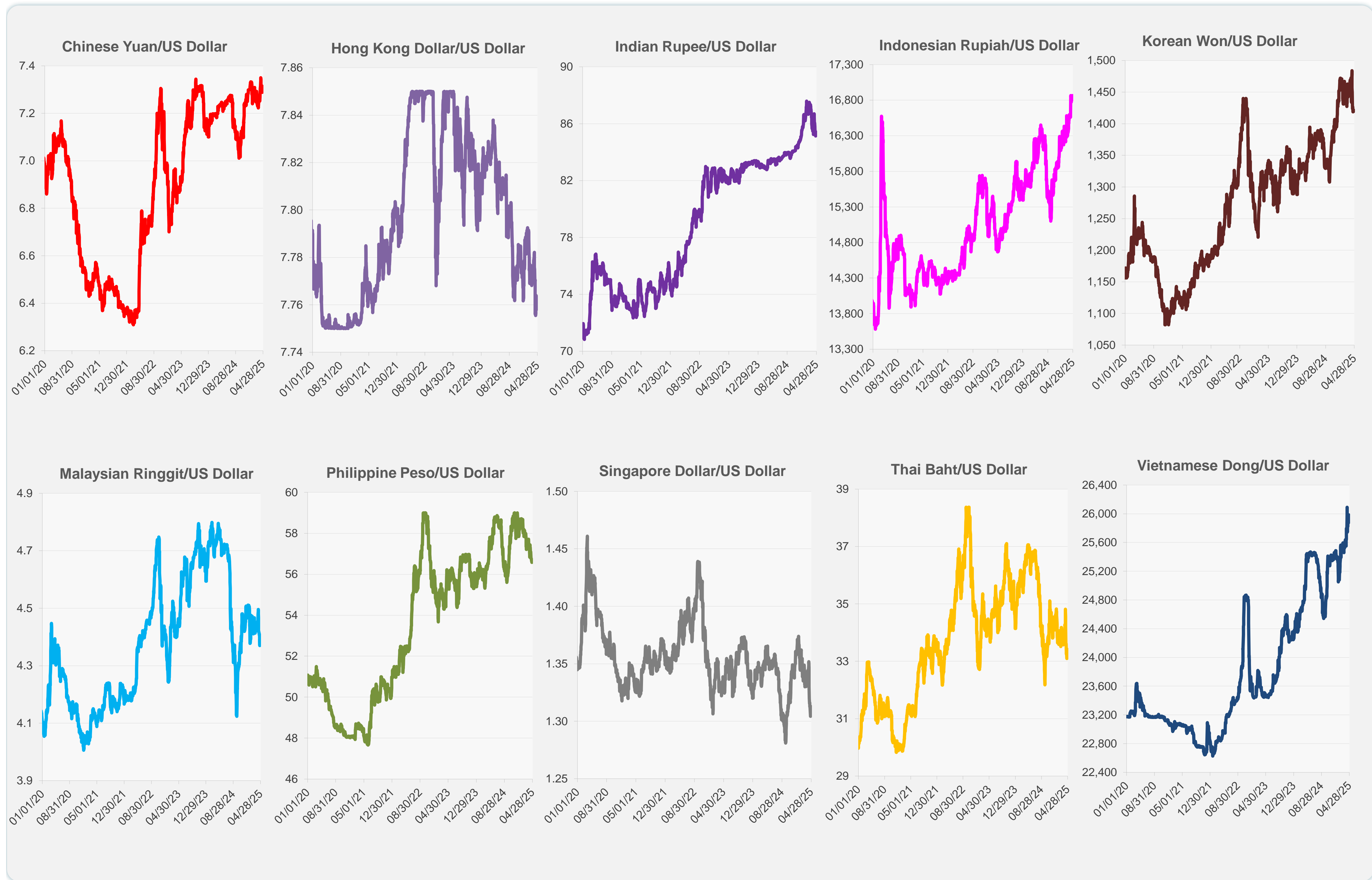
	Latest Closing	% change from Previous Day	% change from 01-Jan-25
Euro	0.88	-1.12	9.60
Japanese yen (JPY)	142.62	-1.33	10.19
Bangladeshi taka (BDT)	121.50	0.00	-1.65
Brunei dollar (BND)	1.31	-0.31	3.91
Chinese yuan (CNY)	7.30	0.25	0.04
Hong Kong dollar (HKD)	7.76	-0.02	0.11
Indian rupee (INR)	85.43	-0.27	0.22
Indonesian rupiah (IDR)	16,865.00	-0.06	-4.57
Korean won (KRW)	1,421.35	-0.05	3.57
Malaysian ringgit (MYR)	4.39	0.01	1.83
Pakistan rupee (PKR)	280.90	0.30	-0.90
Philippine peso (PHP)	56.57	0.20	2.25
Singapore dollar (SGD)	1.31	-0.31	3.91
Sri Lanka rupee (LKR)	299.70	0.05	-2.24
Taipei,China NT dollar (TWD)	32.49	-0.05	0.90
Thai baht (THB)	33.42	-0.61	2.02
Vietnamese dong (VND)	25,985.00	-0.29	-1.92



NIE = Newly Industrialized Economies



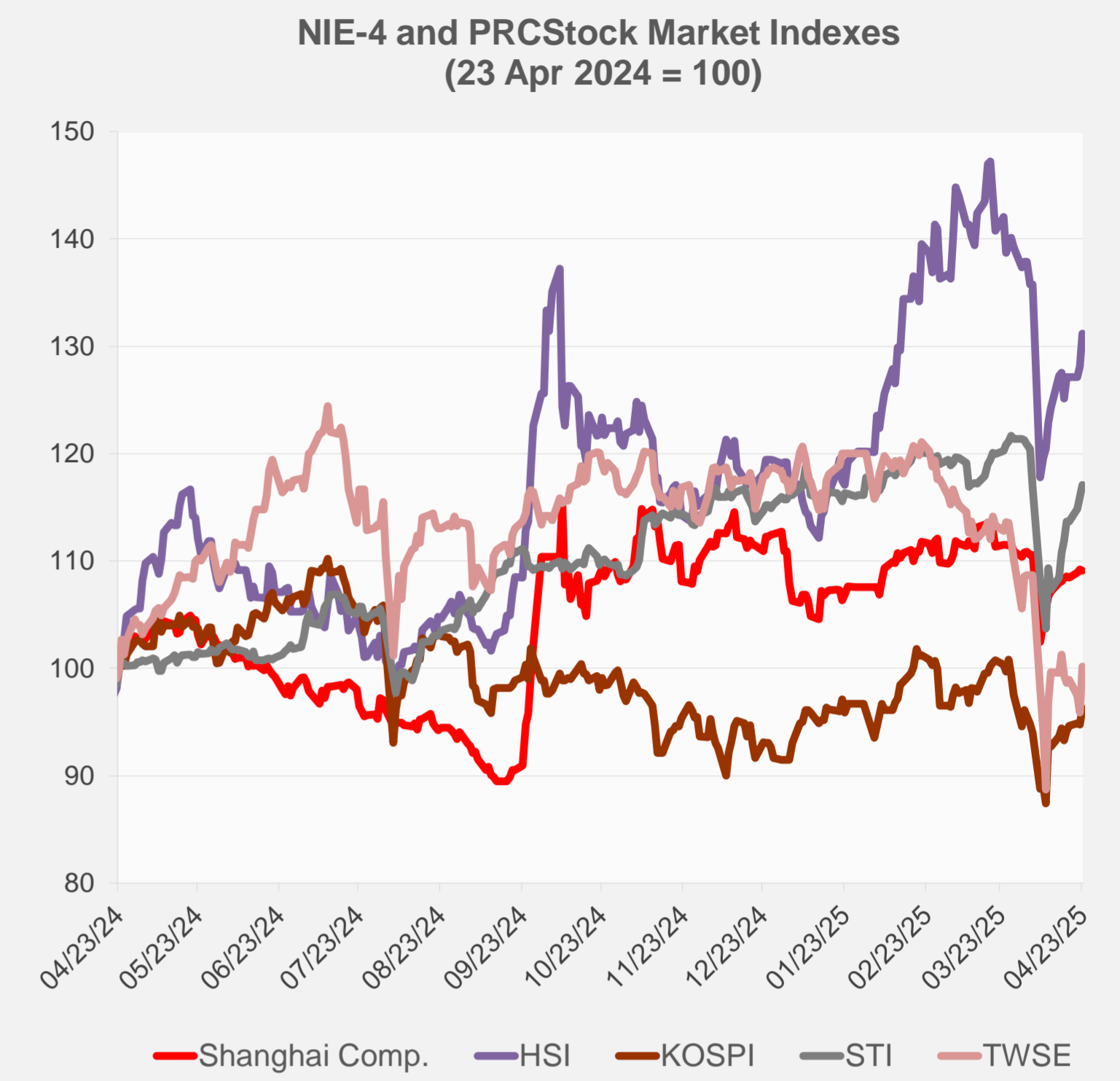
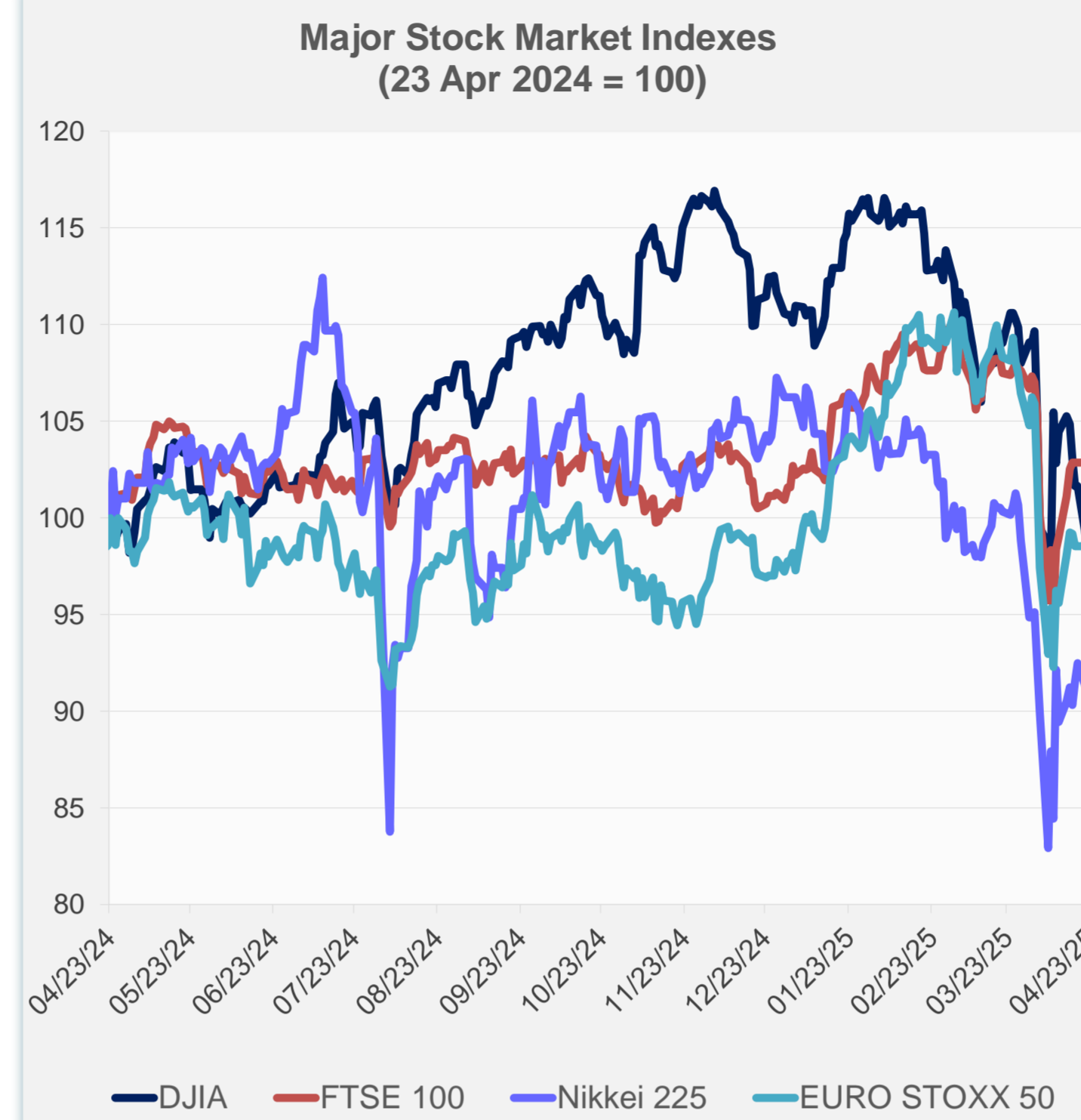
Note: Negative/Decreasing values indicate depreciation of local currency, and positive/increasing values indicate appreciation.
Source: ADB calculations using data from Haver Analytics.



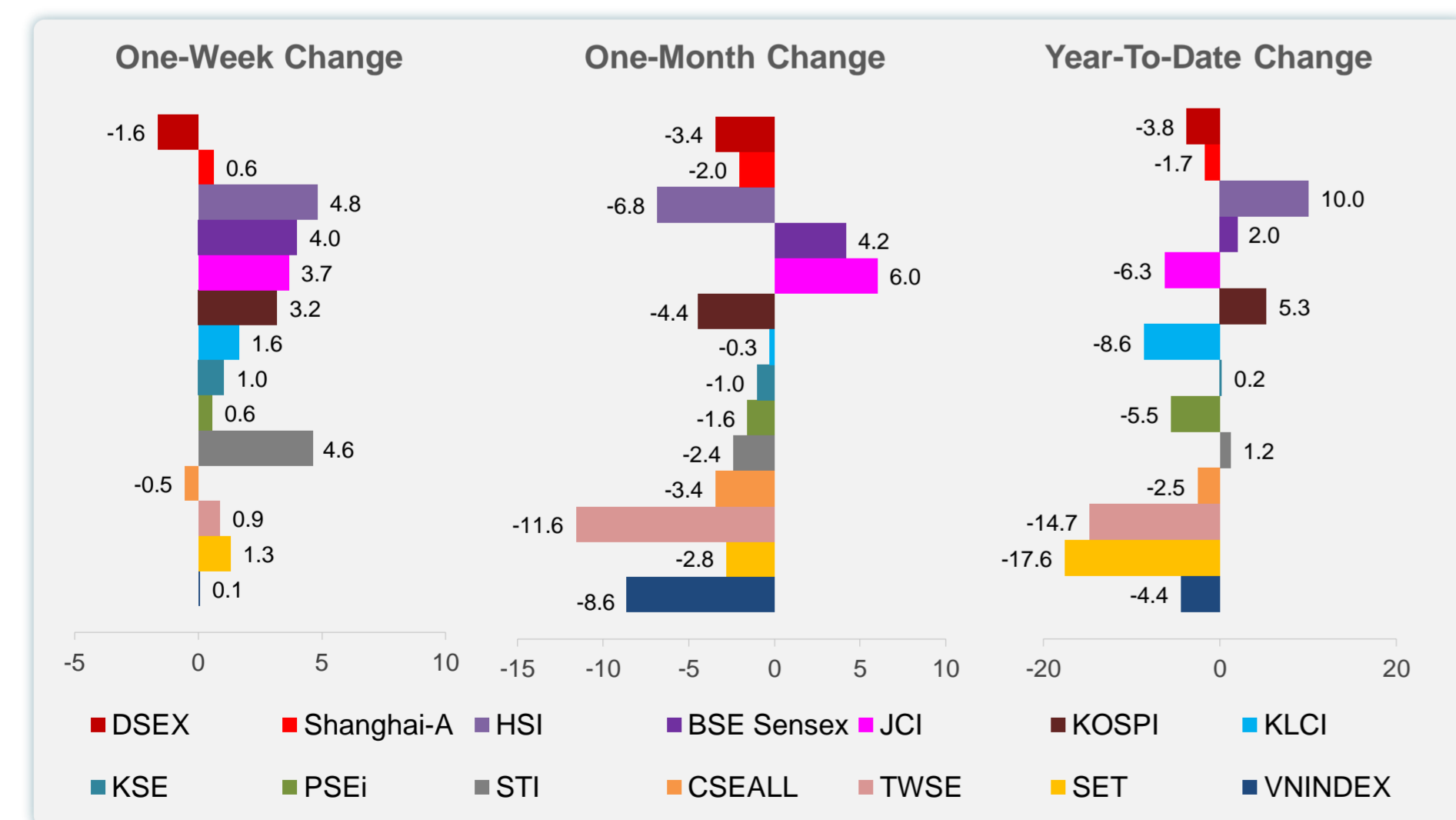
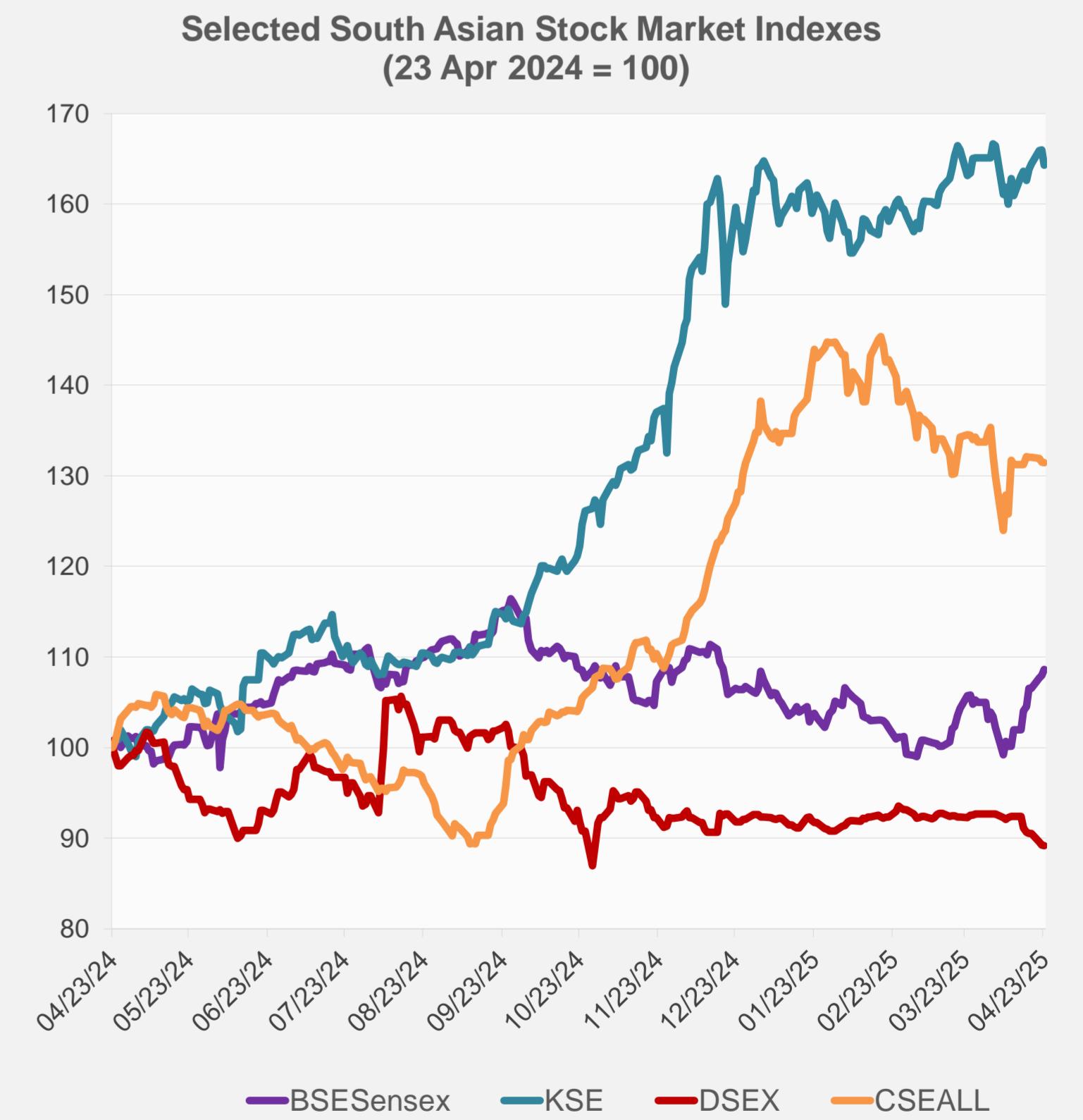
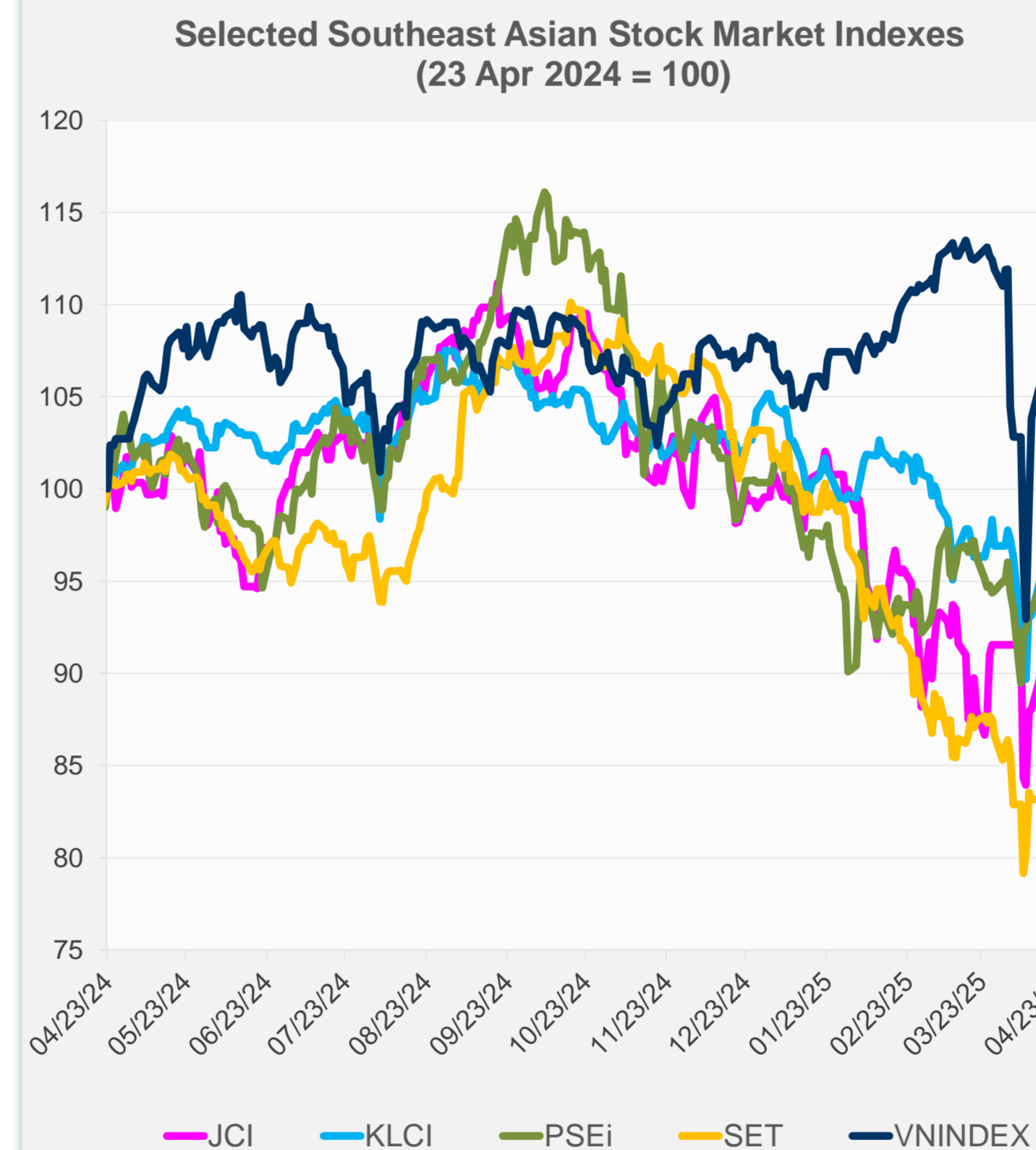
Source: Haver Analytics.

Daily Market Watch
STOCK INDEXES

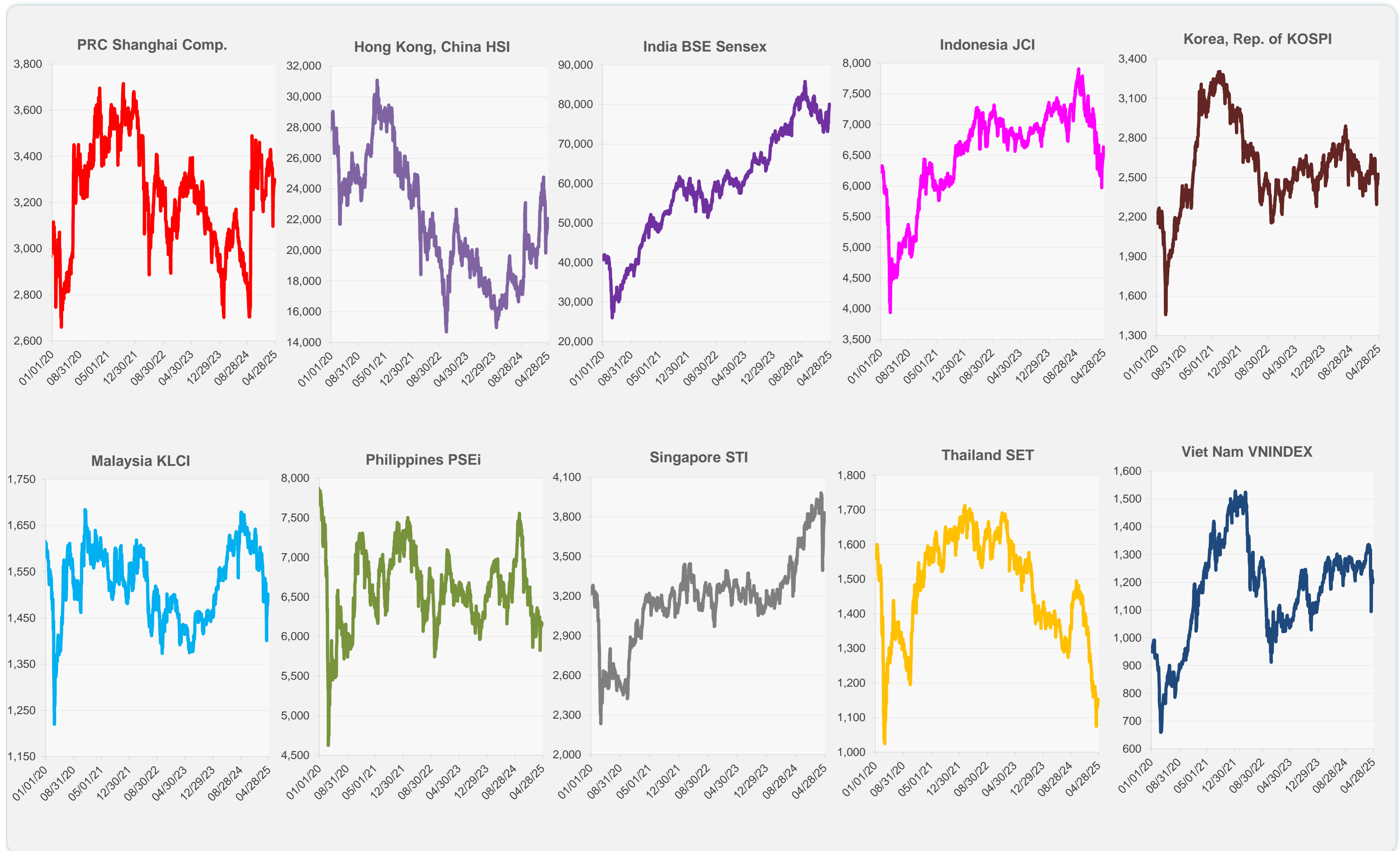
	Latest Closing	% change from Previous Day	% change from 01-Jan-25
US Dow Jones Ind Avg	39,606.57	1.07	-6.90
US NASDAQ	16,708.05	2.50	-13.48
US S&P 500	5,375.86	1.67	-8.60
UK FTSE 100	8,403.18	0.90	2.82
EURO STOXX 50	5,098.74	2.77	4.14
Japan NIKKEI 225	34,868.63	1.89	-12.60
Bangladesh DSEX	5,022.47	-0.08	-3.75
PRC Shanghai Comp.	3,296.36	-0.10	-1.65
Hong Kong, China HSI	22,072.62	2.37	10.03
India BSE Sensex	80,116.49	0.65	2.05
Indonesia JCI	6,634.38	1.47	-6.29
Korea, Rep. of KOSPI	2,525.56	1.57	5.25
Malaysia KLCI	1,501.19	1.01	-8.59
Pakistan KSE 100	117,226.14	-1.02	0.19
Philippines PSEi	6,168.48	0.37	-5.52
Singapore STI	3,832.32	0.97	1.18
Sri Lanka CSEALL	15,543.99	-0.08	-2.51
Taipei, China TWSE	19,639.14	4.50	-14.74
Thailand SET	1,153.77	0.85	-17.60
Viet Nam VNINDEX	1,211.00	1.16	-4.40



NIE = Newly Industrialized Economies



Sources: ADB calculations using data from CEIC Data Company and Haver Analytics.



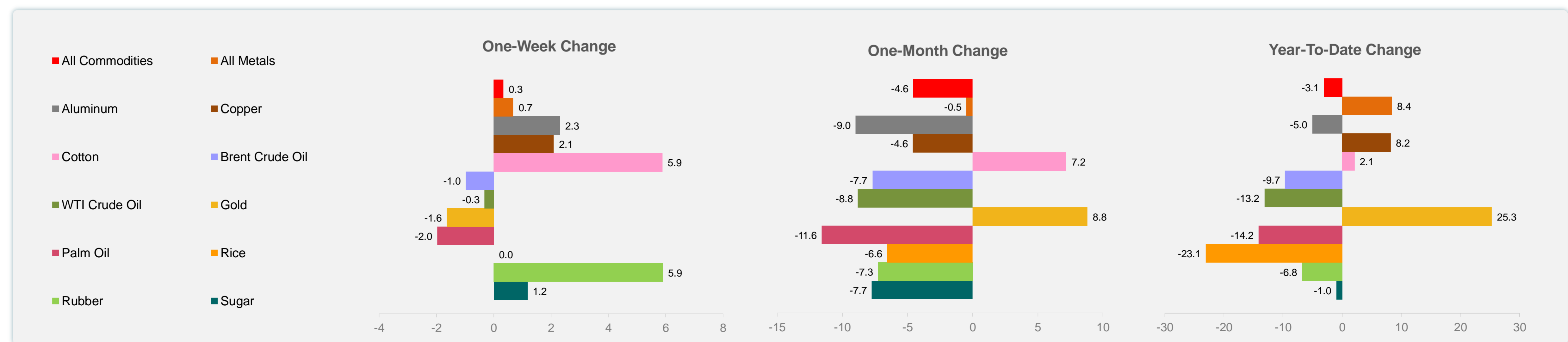
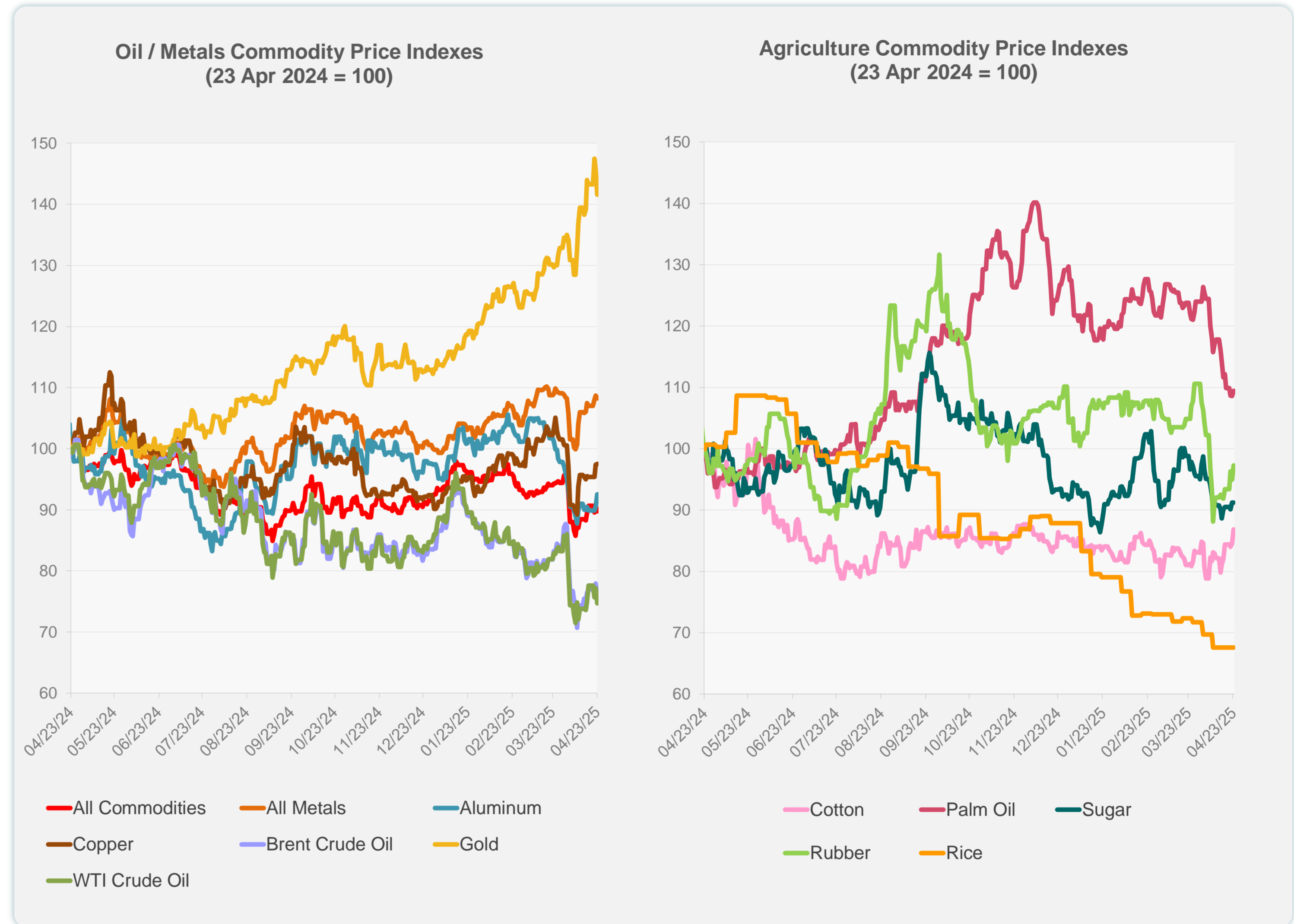
Sources: CEIC Data Company and Haver Analytics.

Daily Market Watch
COMMODITY PRICES

	Unit	Latest Closing	% change from Previous Day	% change from 01-Jan-25
S&P All Commodities	US\$	532.81	-1.00	-3.06
S&P All Metals	US\$	333.24	-0.44	8.41
Aluminum	US\$/metric ton	2,399.19	2.22	-5.05
Copper	US\$/metric ton	9,363.38	0.12	8.21
Cotton	US cents/lb	67.28	2.76	2.09
Brent Crude Oil	US\$/barrel	66.95	-2.98	-9.66
WTI Crude Oil	US\$/barrel	62.27	-3.17	-13.18
Gold	US\$/troy oz	3,288.34	-2.73	25.29
Palm Oil	US\$/metric tonne	944.45	0.80	-14.15
Rice ¹	US\$/metric ton	413.00	0.00	-23.09
Rubber ²	US\$/kg	220.80	2.41	-6.76
Sugar	US cents/lb	18.02	0.00	-0.99

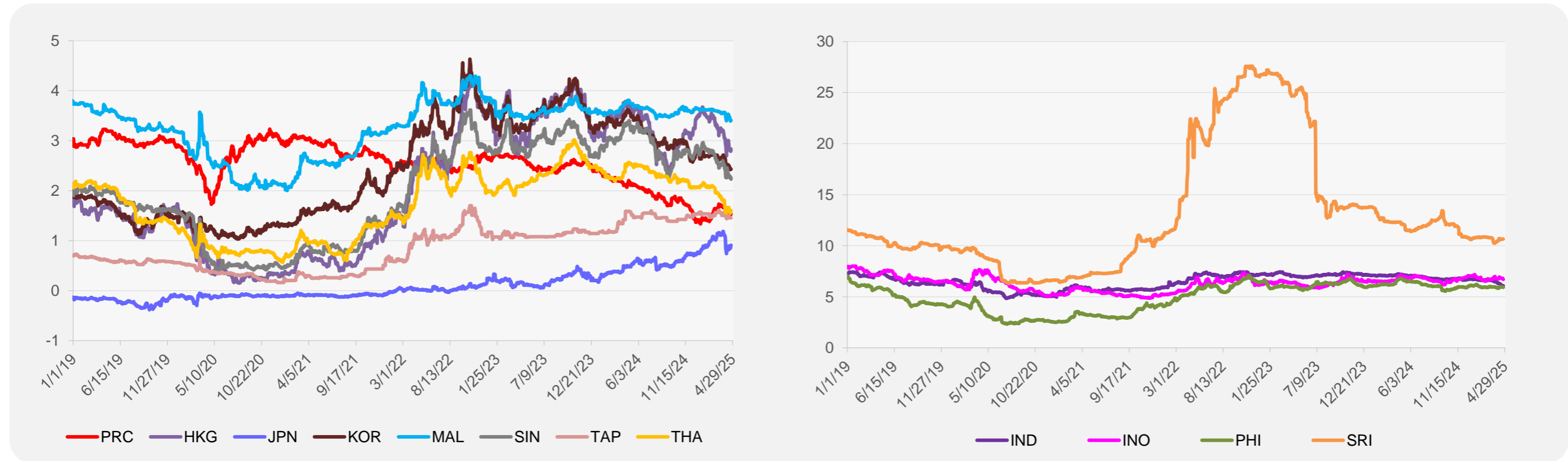
¹ Latest closing price from 9 April 2025.

² Singapore Exchange, Ribbed Smoked Sheet Rubber.

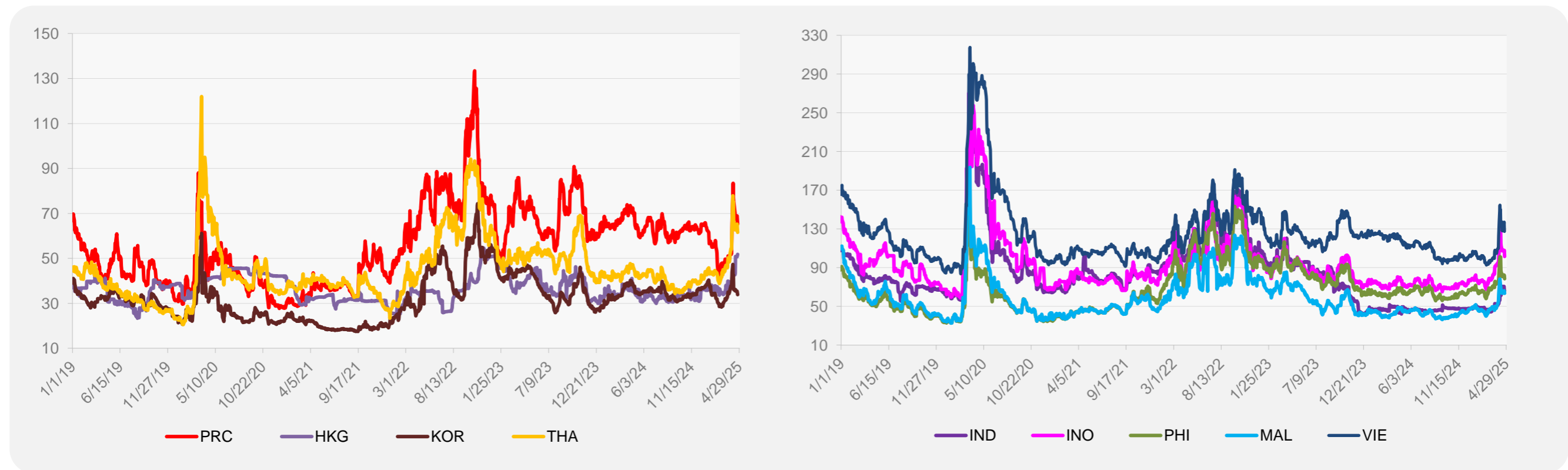


Source: ADB calculations using data from Bloomberg.

5-YEAR LOCAL CURRENCY GOVERNMENT BOND YIELDS (%)



5-YEAR CREDIT DEFAULT SWAP¹



¹ In USD and based on sovereign bonds.
Source: ADB calculations using data from Bloomberg.