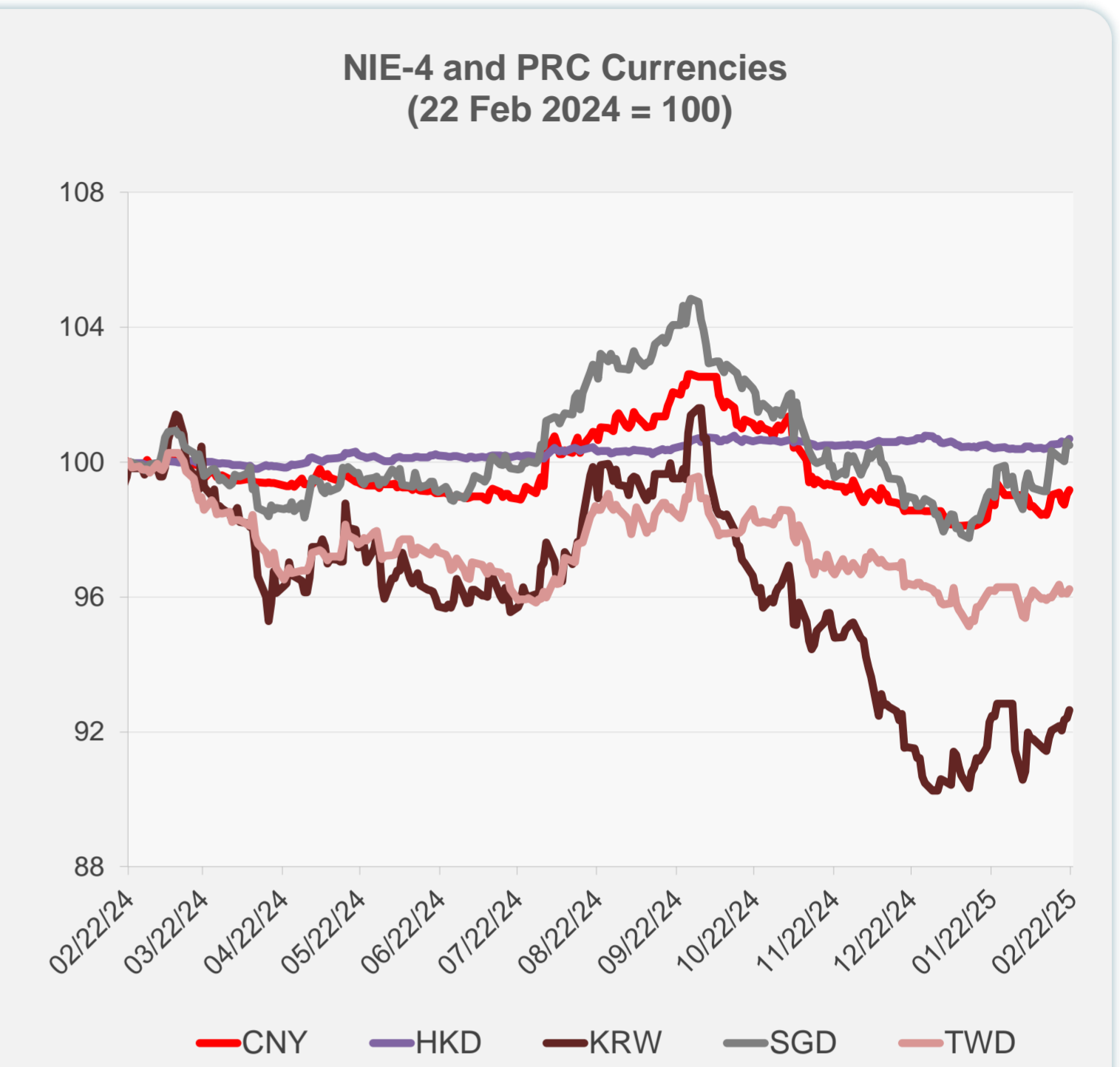
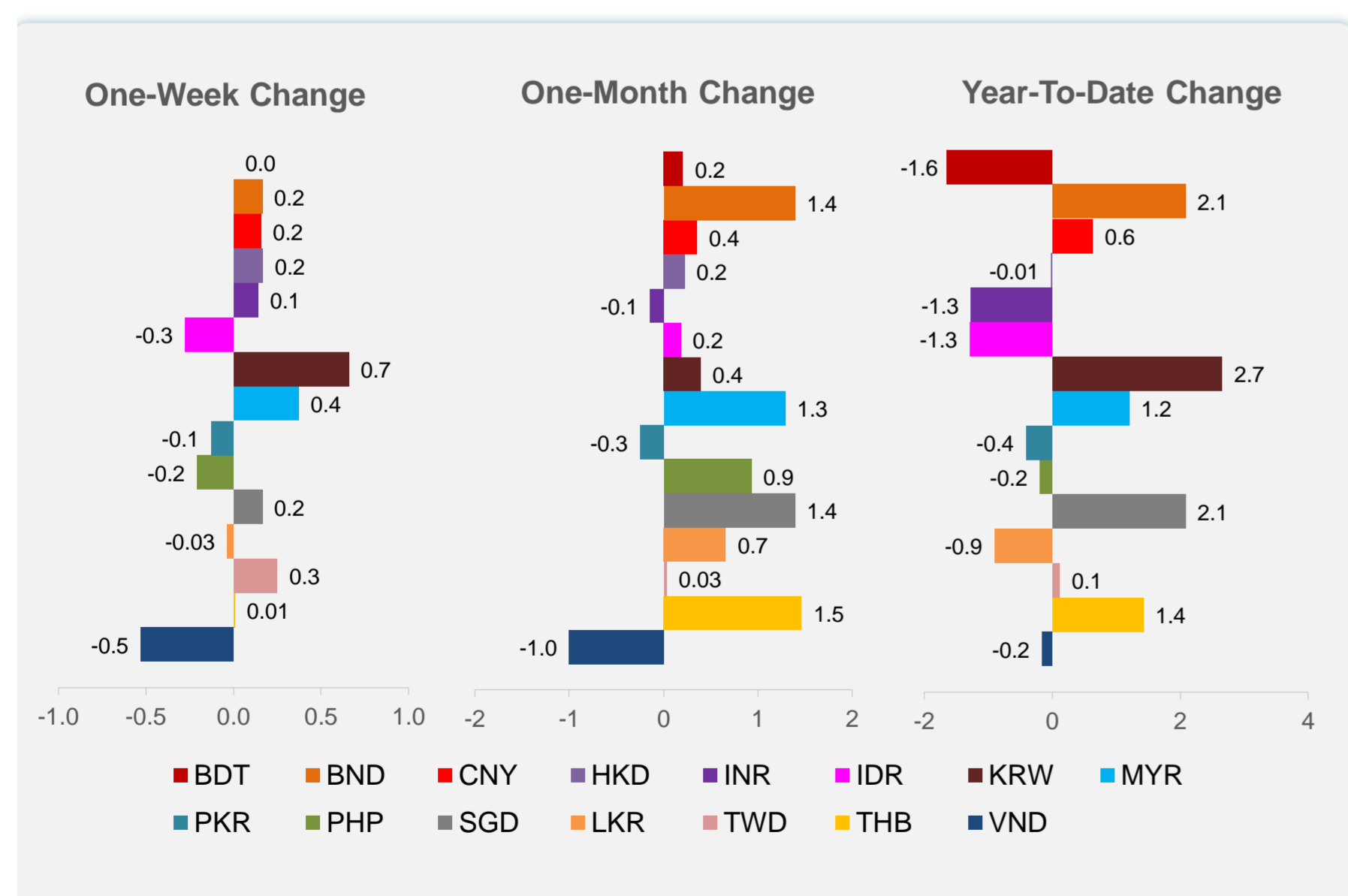
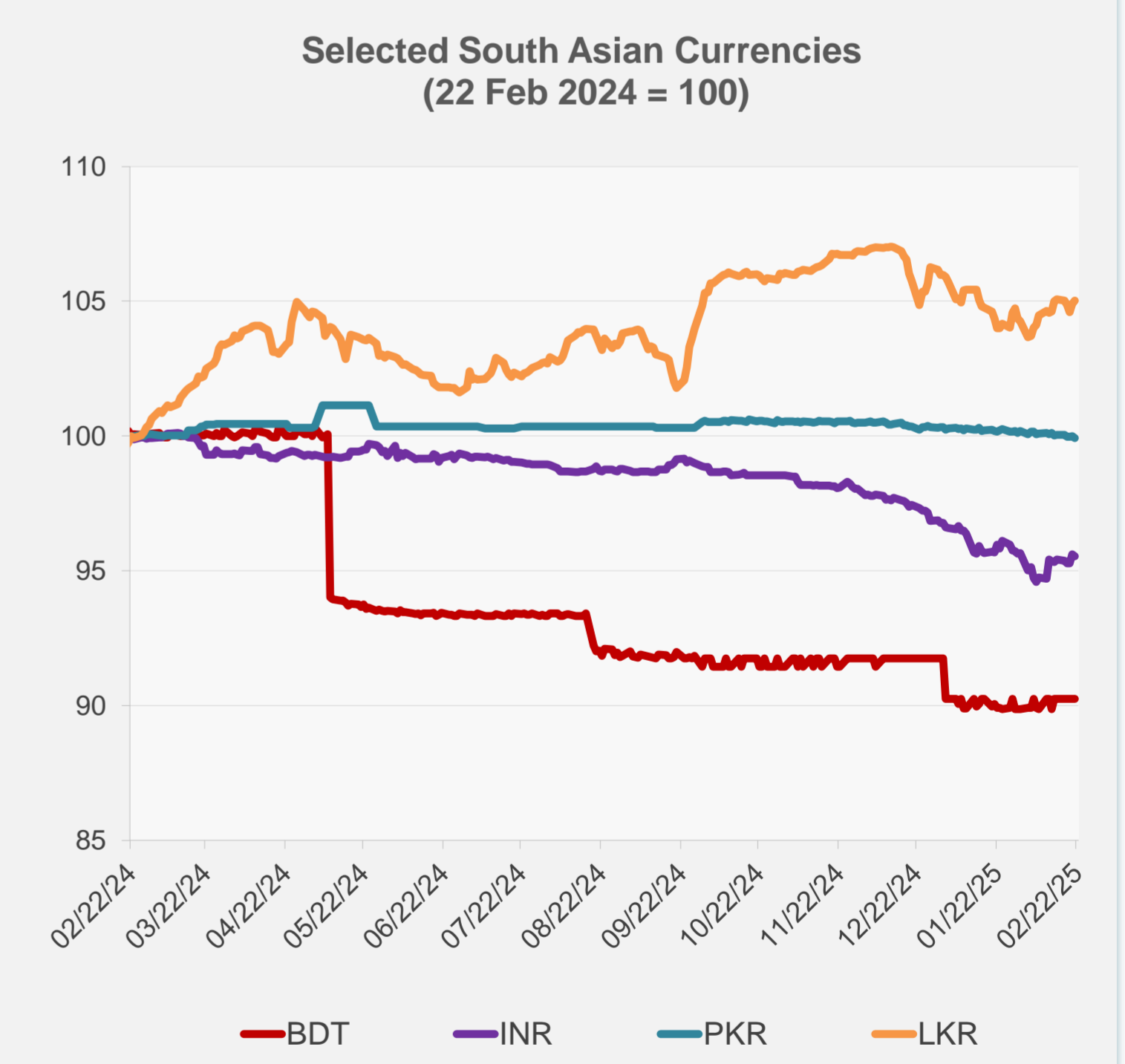
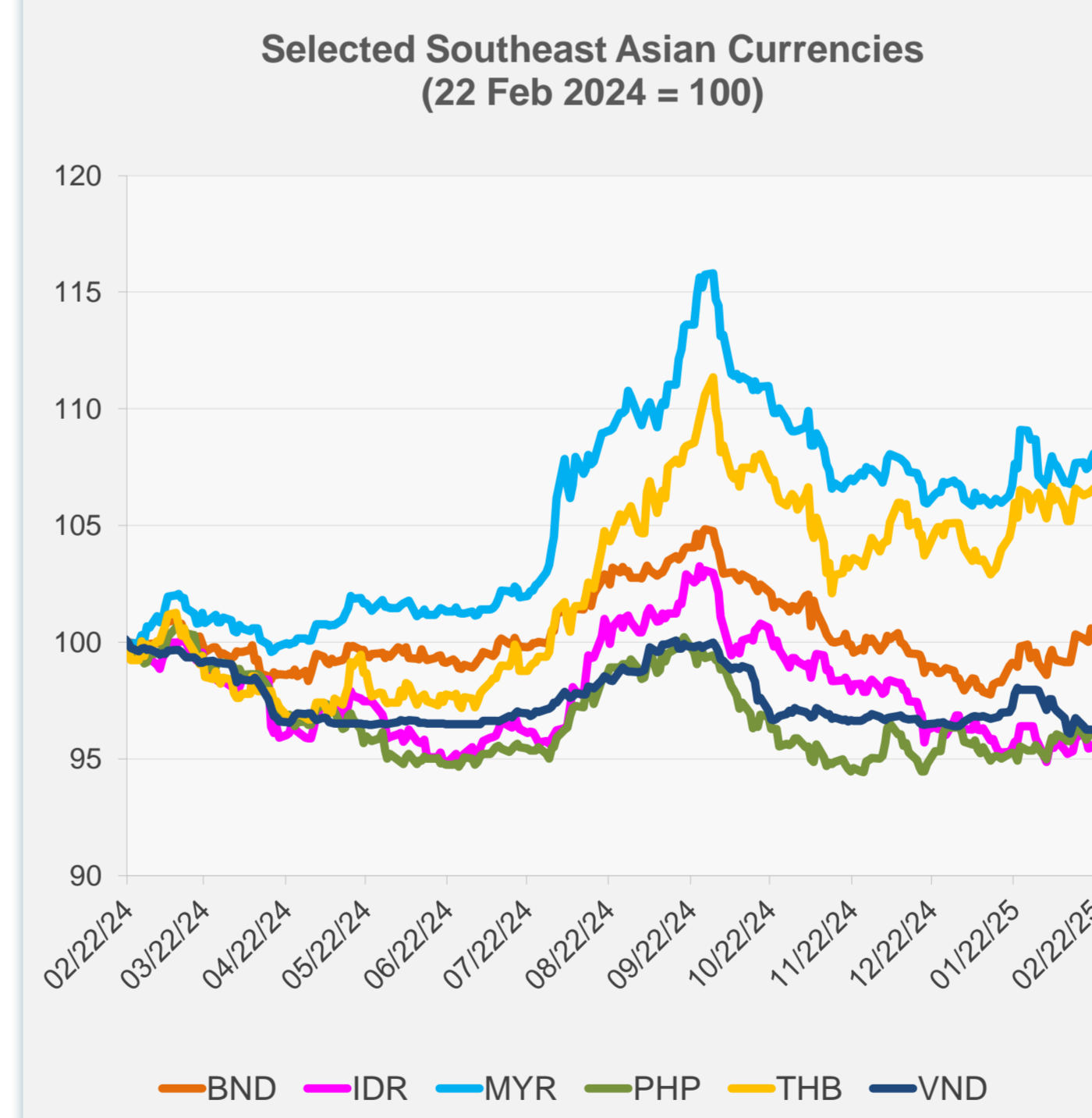


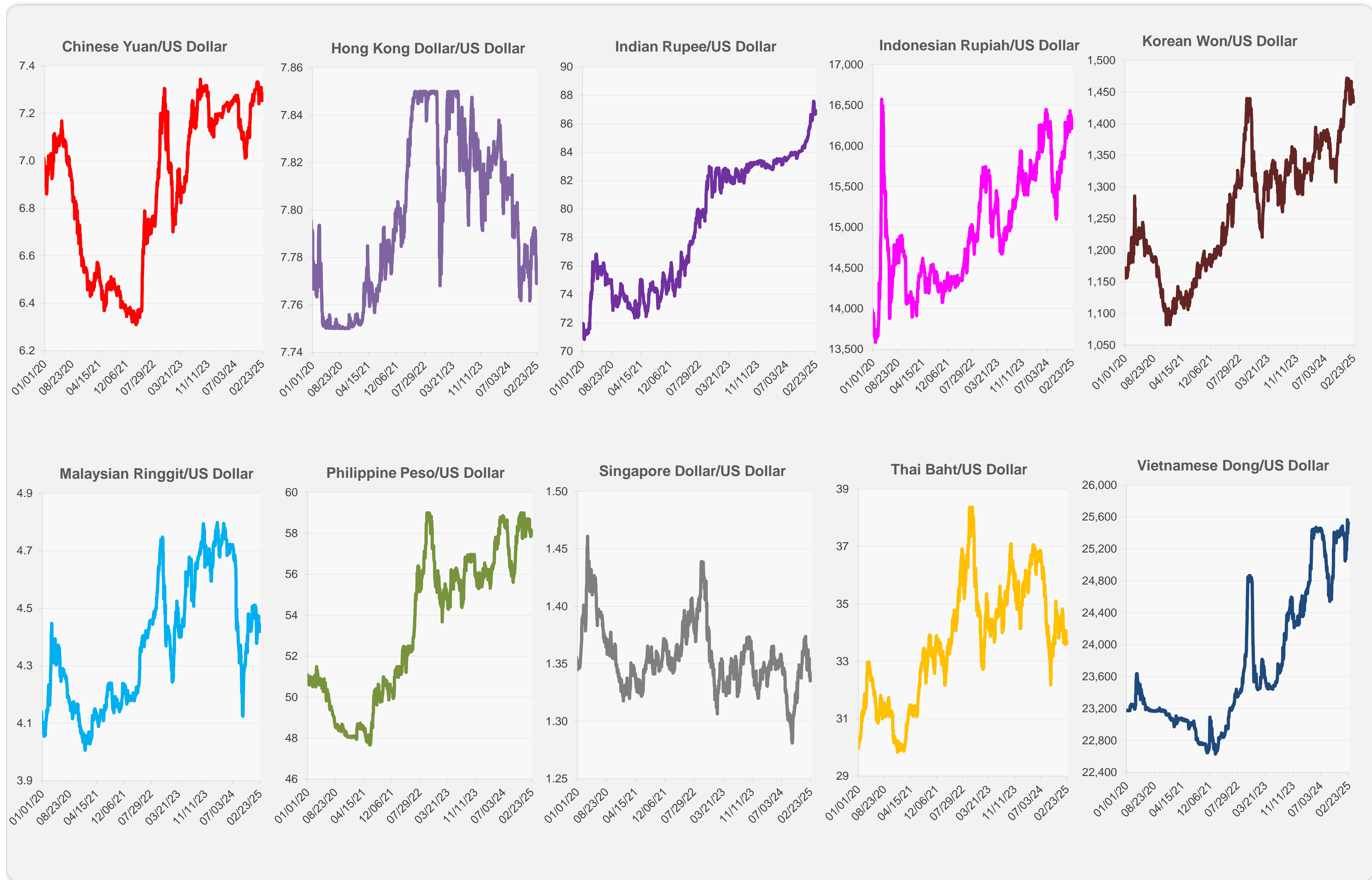
	Latest Closing	% change from Previous Day	% change from 01-Jan-25
Euro	0.96	-0.19	0.96
Japanese yen (JPY)	149.56	-0.05	5.08
Bangladeshi taka (BDT)	121.50	0.00	-1.65
Brunei dollar (BND)	1.34	-0.10	2.08
Chinese yuan (CNY)	7.25	0.13	0.63
Hong Kong dollar (HKD)	7.77	0.08	-0.01
Indian rupee (INR)	86.71	-0.05	-1.26
Indonesian rupiah (IDR)	16,305.00	0.15	-1.29
Korean won (KRW)	1,434.10	0.28	2.65
Malaysian ringgit (MYR)	4.42	0.26	1.20
Pakistan rupee (PKR)	279.50	-0.06	-0.40
Philippine peso (PHP)	57.96	-0.06	-0.19
Singapore dollar (SGD)	1.34	-0.10	2.08
Sri Lanka rupee (LKR)	295.65	0.13	-0.90
Taipei,China NT dollar (TWD)	32.75	0.14	0.12
Thai baht (THB)	33.62	0.13	1.42
Vietnamese dong (VND)	25,525.00	-0.03	-0.16



NIE = Newly Industrialized Economies



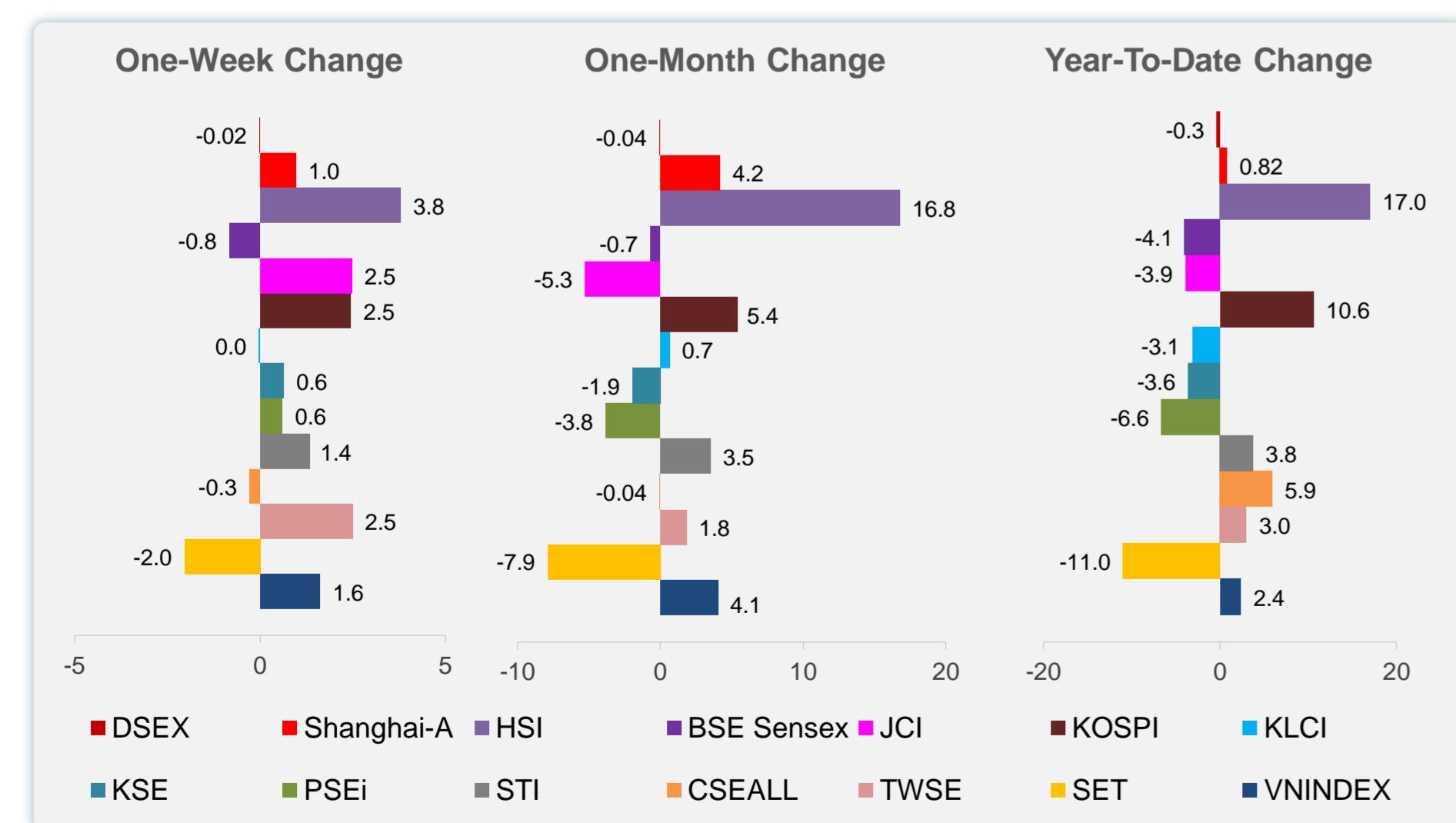
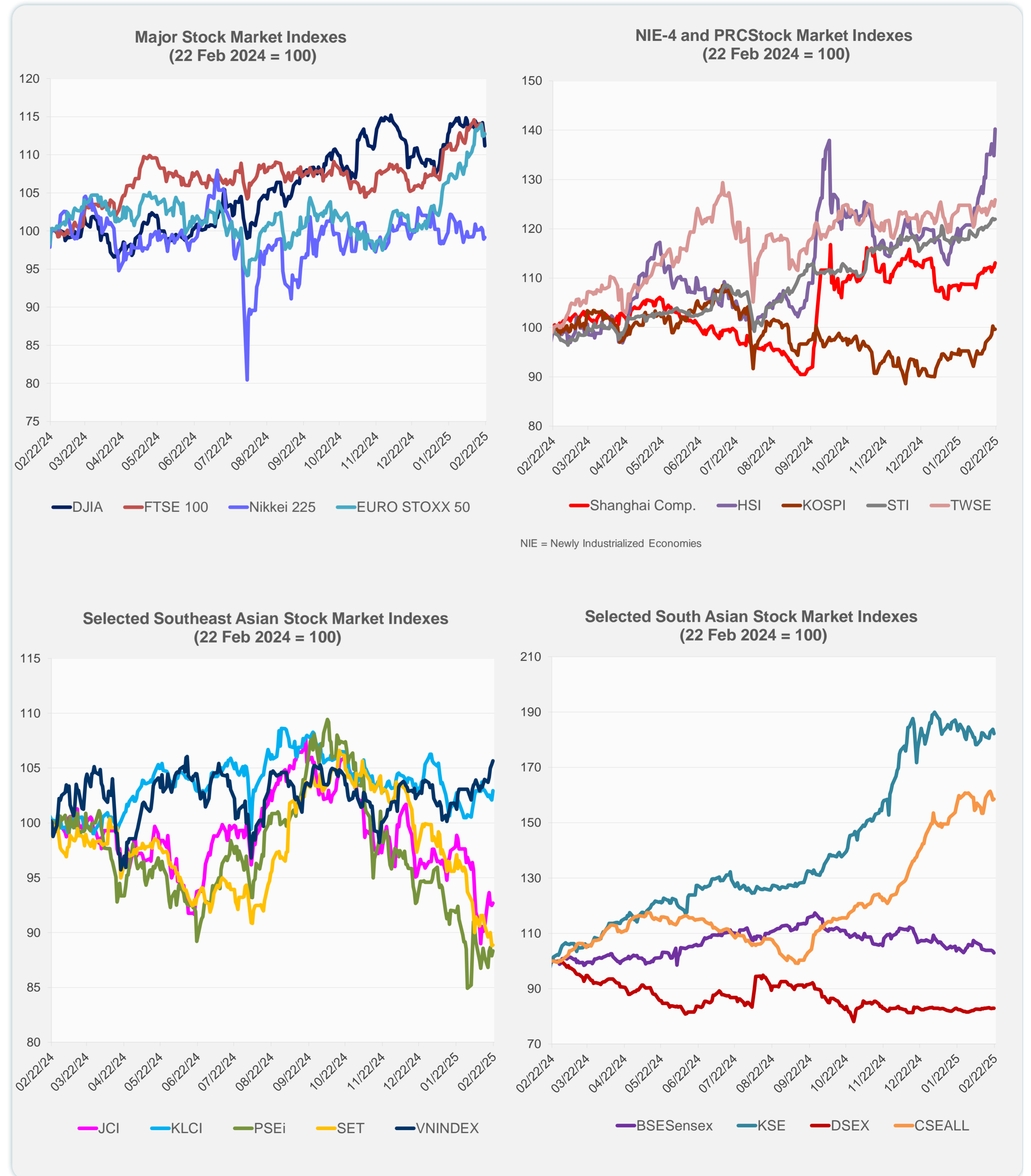
Note: Negative/Decreasing values indicate depreciation of local currency, and positive/increasing values indicate appreciation.  
Source: ADB calculations using data from Haver Analytics.



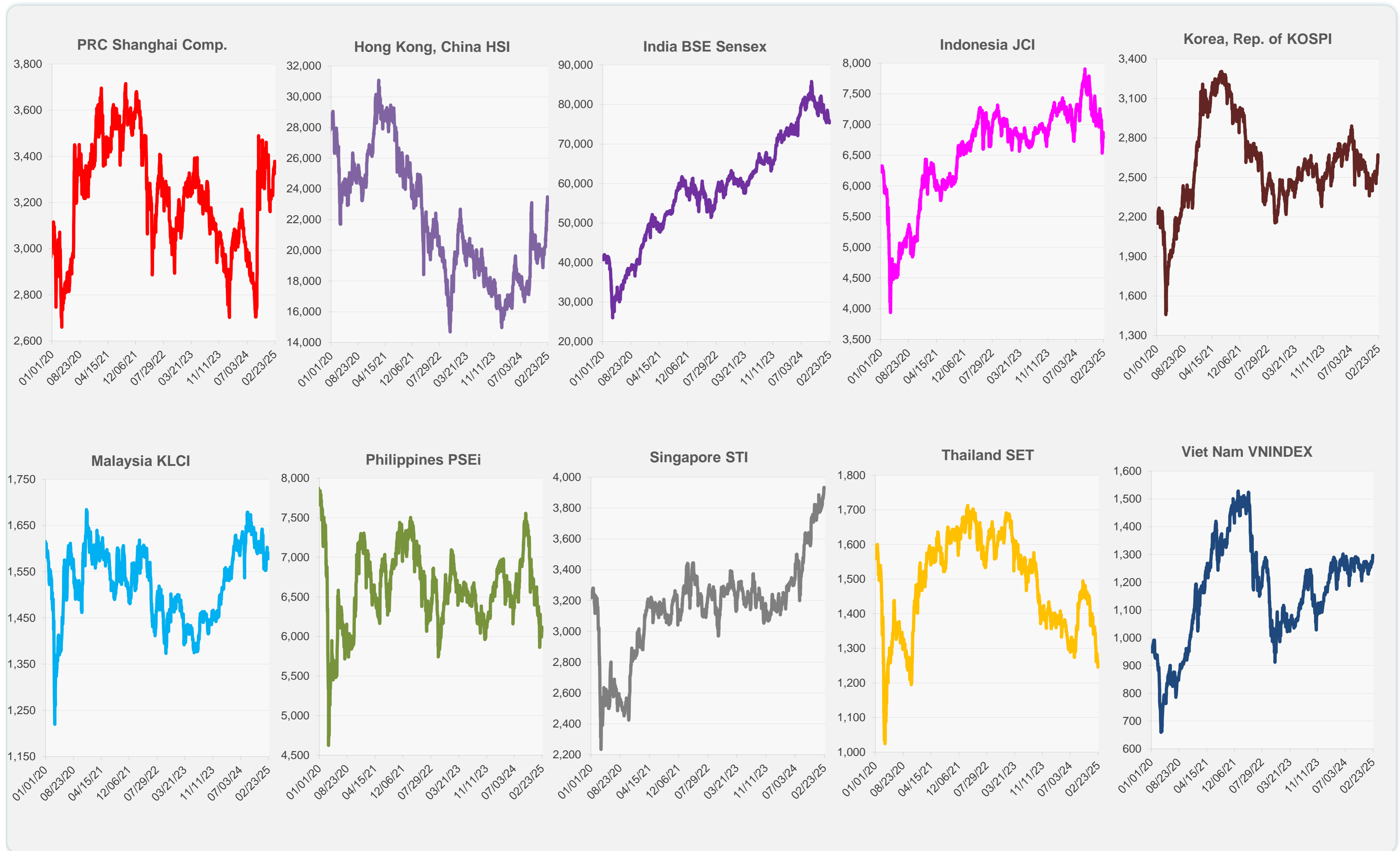
Source: Haver Analytics.

Daily Market Watch  
**STOCK INDEXES**

	Latest Closing	% change from Previous Day	% change from 01-Jan-25
US Dow Jones Ind Avg	43,428.02	-1.69	2.08
US NASDAQ	19,524.01	-2.20	1.10
US S&P 500	6,013.13	-1.71	2.24
UK FTSE 100	8,659.37	-0.04	5.95
EURO STOXX 50	5,474.85	0.25	11.82
Japan NIKKEI 225	38,776.94	0.26	-2.80
Bangladesh DSEX	5,200.37	0.00	-0.34
PRC Shanghai Comp.	3,379.11	0.85	0.82
Hong Kong, China HSI	23,477.92	3.99	17.04
India BSE Sensex	75,311.06	-0.56	-4.07
Indonesia JCI	6,803.00	0.22	-3.91
Korea, Rep. of KOSPI	2,654.58	0.02	10.63
Malaysia KLCI	1,591.03	0.85	-3.12
Pakistan KSE 100	112,800.93	-0.82	-3.60
Philippines PSEi	6,098.04	0.52	-6.60
Singapore STI	3,929.94	0.06	3.76
Sri Lanka CSEALL	16,889.31	0.18	5.92
Taipei, China TWSE	23,730.25	1.03	3.02
Thailand SET	1,246.21	0.05	-11.00
Viet Nam VNINDEX	1,296.75	0.29	2.37



Sources: ADB calculations using data from CEIC Data Company and Haver Analytics.



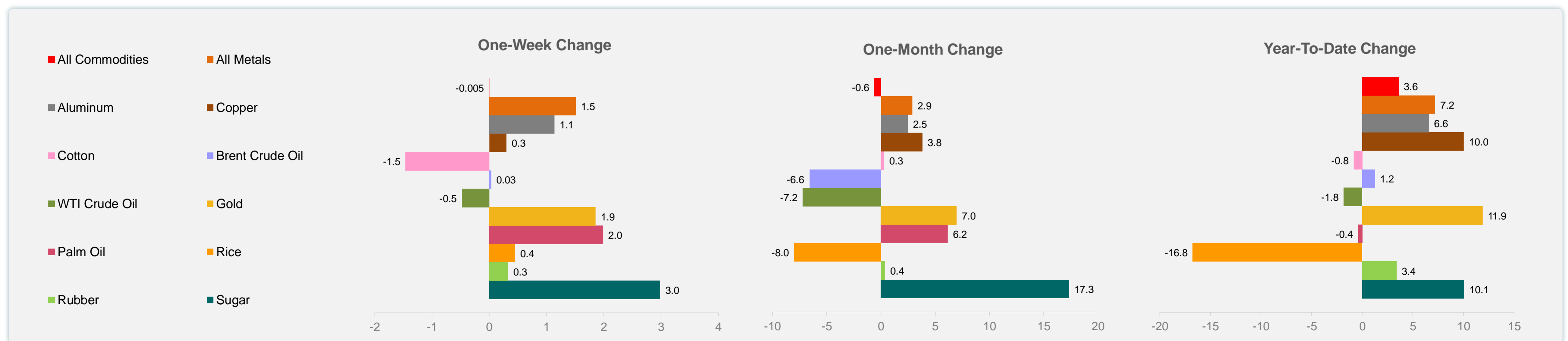
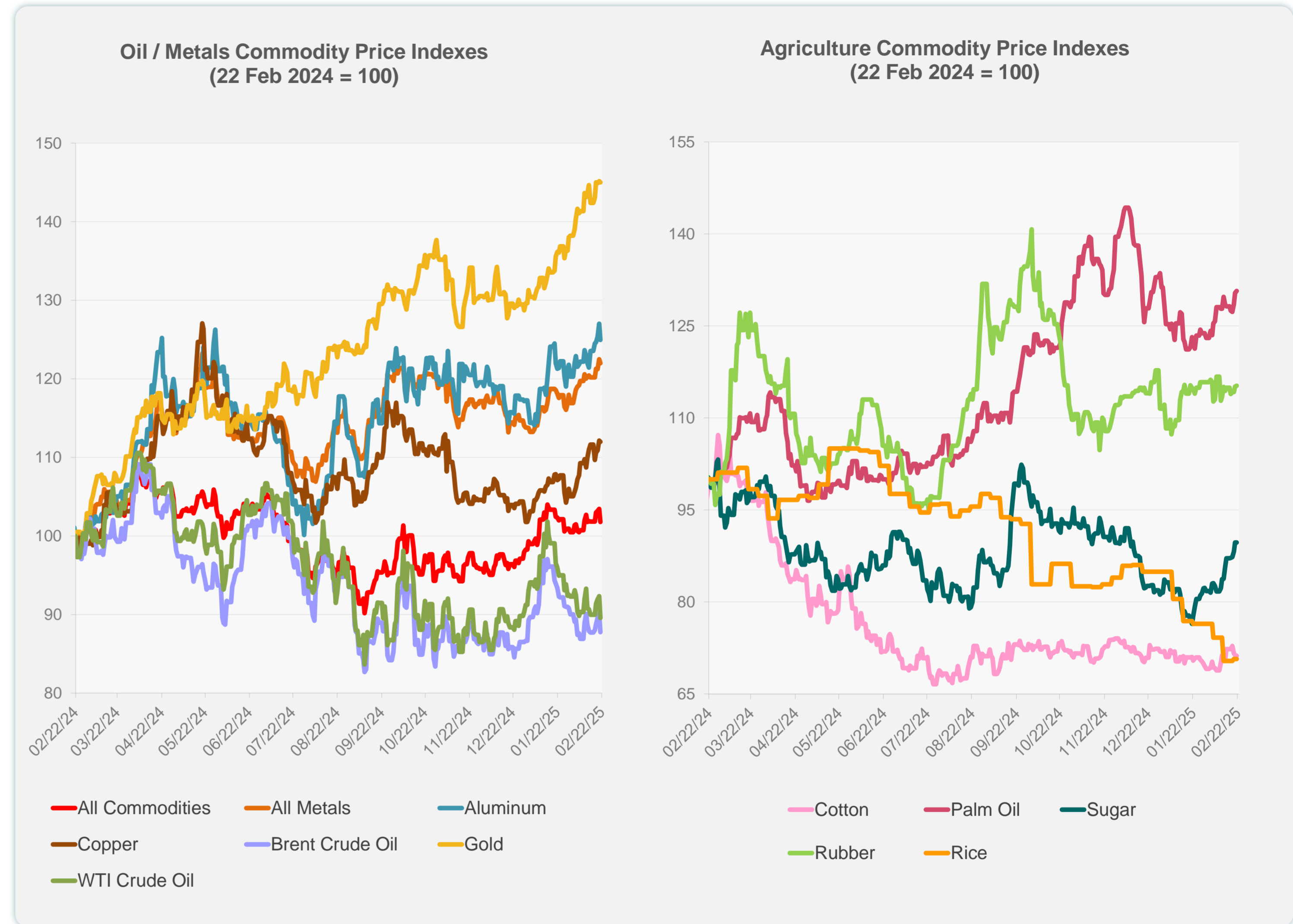
Sources: CEIC Data Company and Haver Analytics.

Daily Market Watch  
**COMMODITY PRICES**

24 February 2025, 9:00 AM Manila

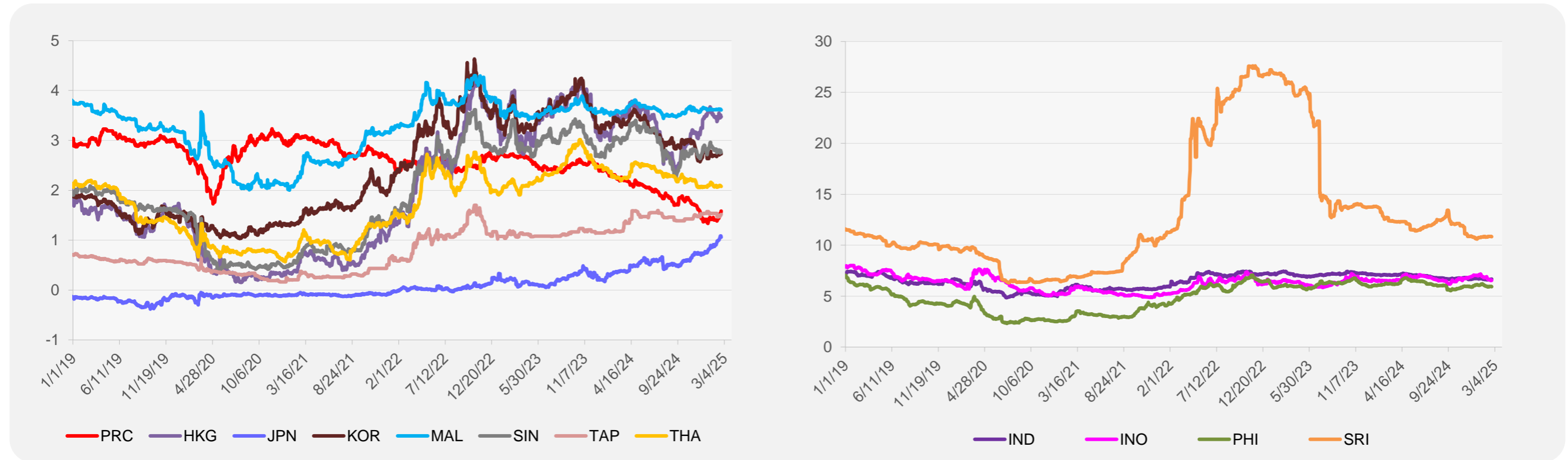
	Unit	Latest Closing	% change from Previous Day	% change from 01-Jan-25
S&P All Commodities	US\$	569.40	-1.58	3.59
S&P All Metals	US\$	329.50	-0.40	7.20
Aluminum	US\$/metric ton	2,693.11	-1.62	6.58
Copper	US\$/metric ton	9,518.84	-0.14	10.01
Cotton	US cents/lb	65.34	-0.20	-0.85
Brent Crude Oil	US\$/barrel	75.03	-2.56	1.24
WTI Crude Oil	US\$/barrel	70.40	-2.99	-1.84
Gold	US\$/troy oz	2,936.05	-0.10	11.87
Palm Oil	US\$/metric tonne	1,095.56	0.25	-0.42
Rice <sup>1</sup>	US\$/metric ton	447.00	0.00	-16.76
Rubber <sup>2</sup>	US\$/kg	244.80	0.16	3.38
Sugar	US cents/lb	20.03	0.00	10.05

<sup>1</sup> Latest closing price from 19 February 2025.  
<sup>2</sup> Singapore Exchange, Ribbed Smoked Sheet Rubber.

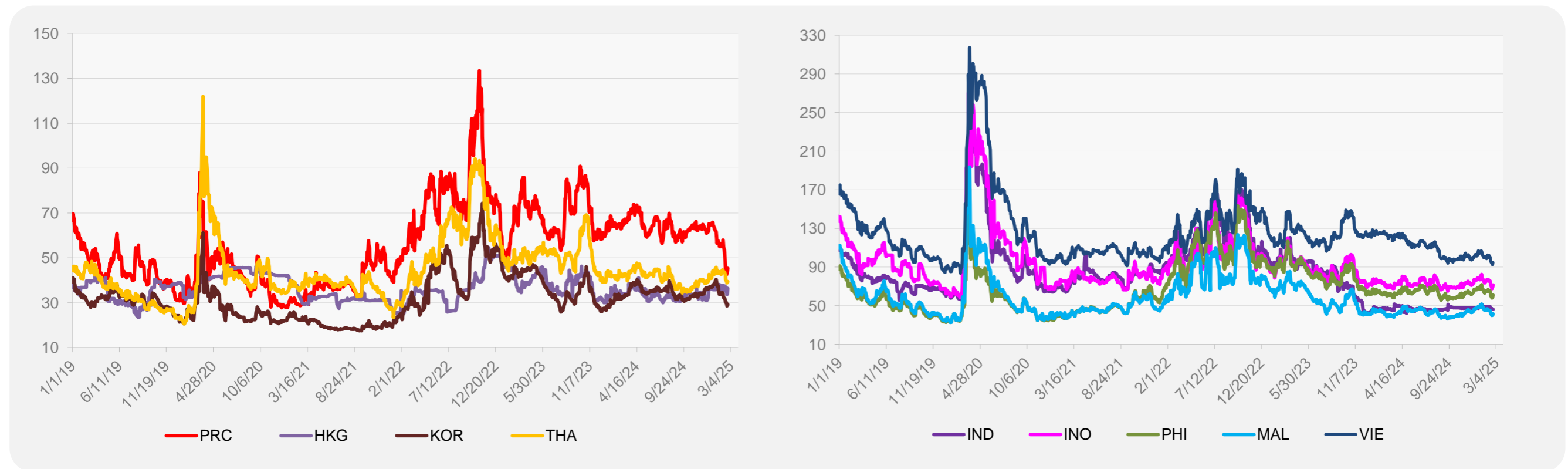


Source: ADB calculations using data from Bloomberg.

### 5-YEAR LOCAL CURRENCY GOVERNMENT BOND YIELDS (%)



### 5-YEAR CREDIT DEFAULT SWAP<sup>1</sup>



<sup>1</sup> In USD and based on sovereign bonds.  
Source: ADB calculations using data from Bloomberg.