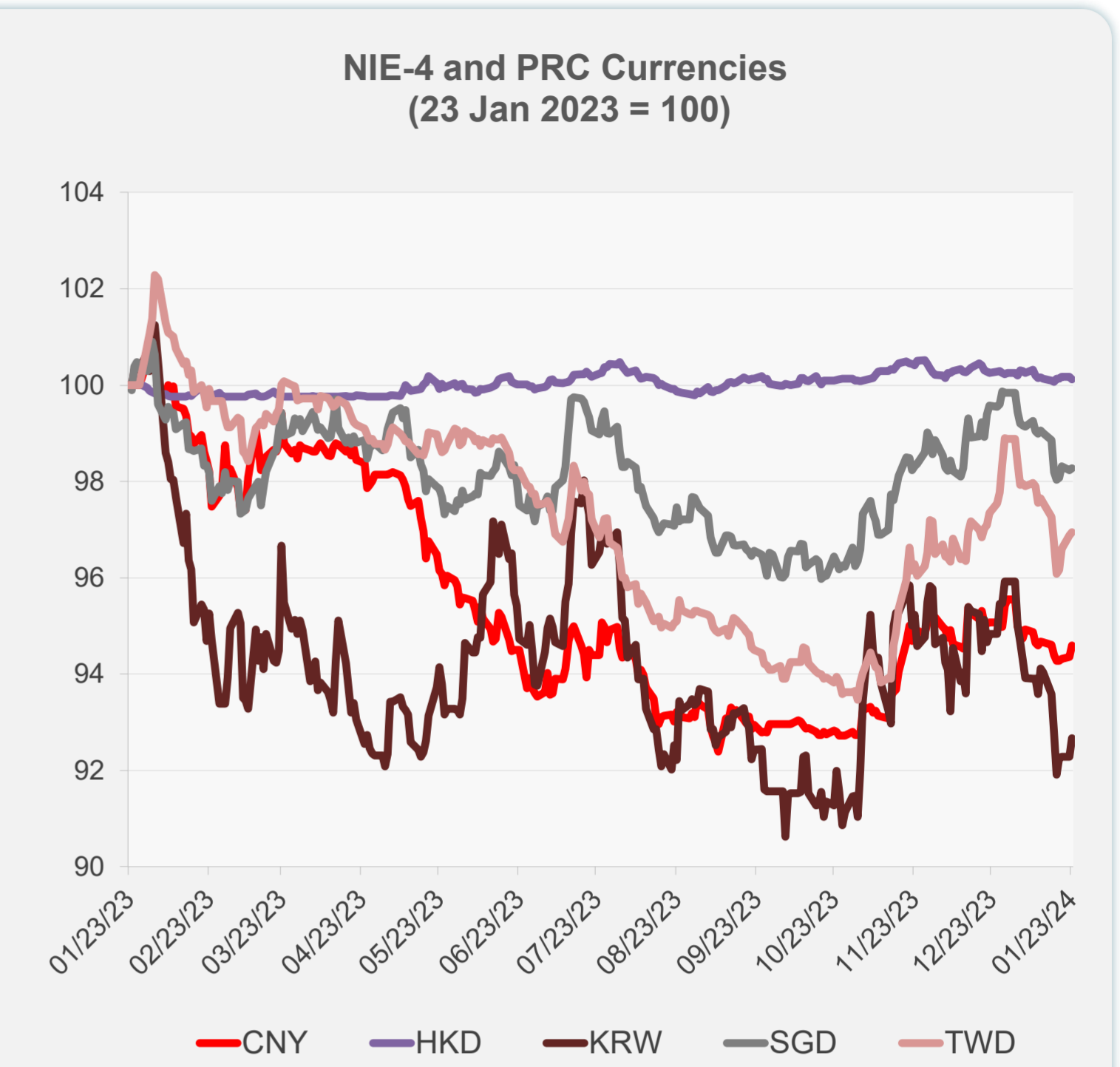
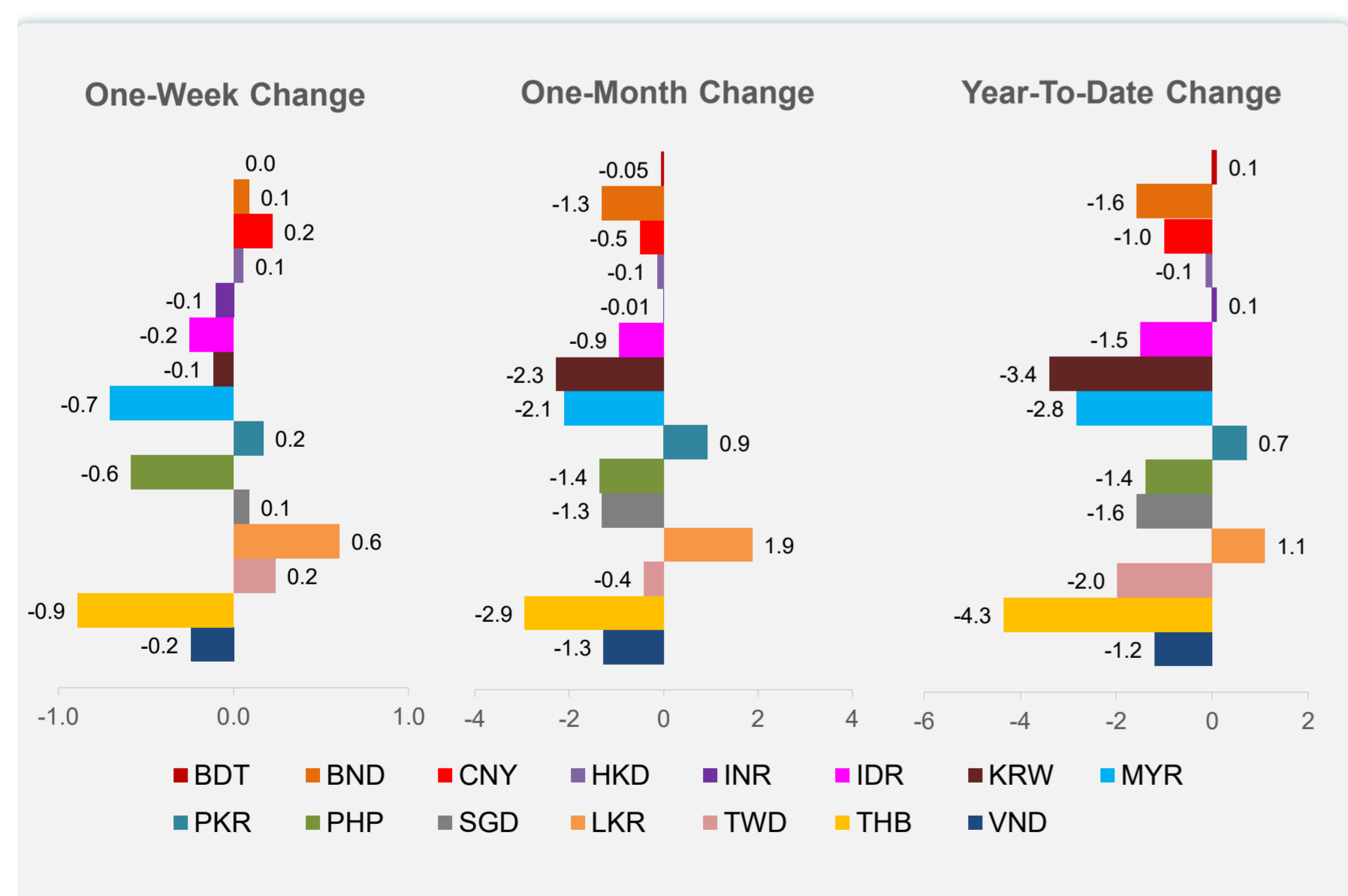
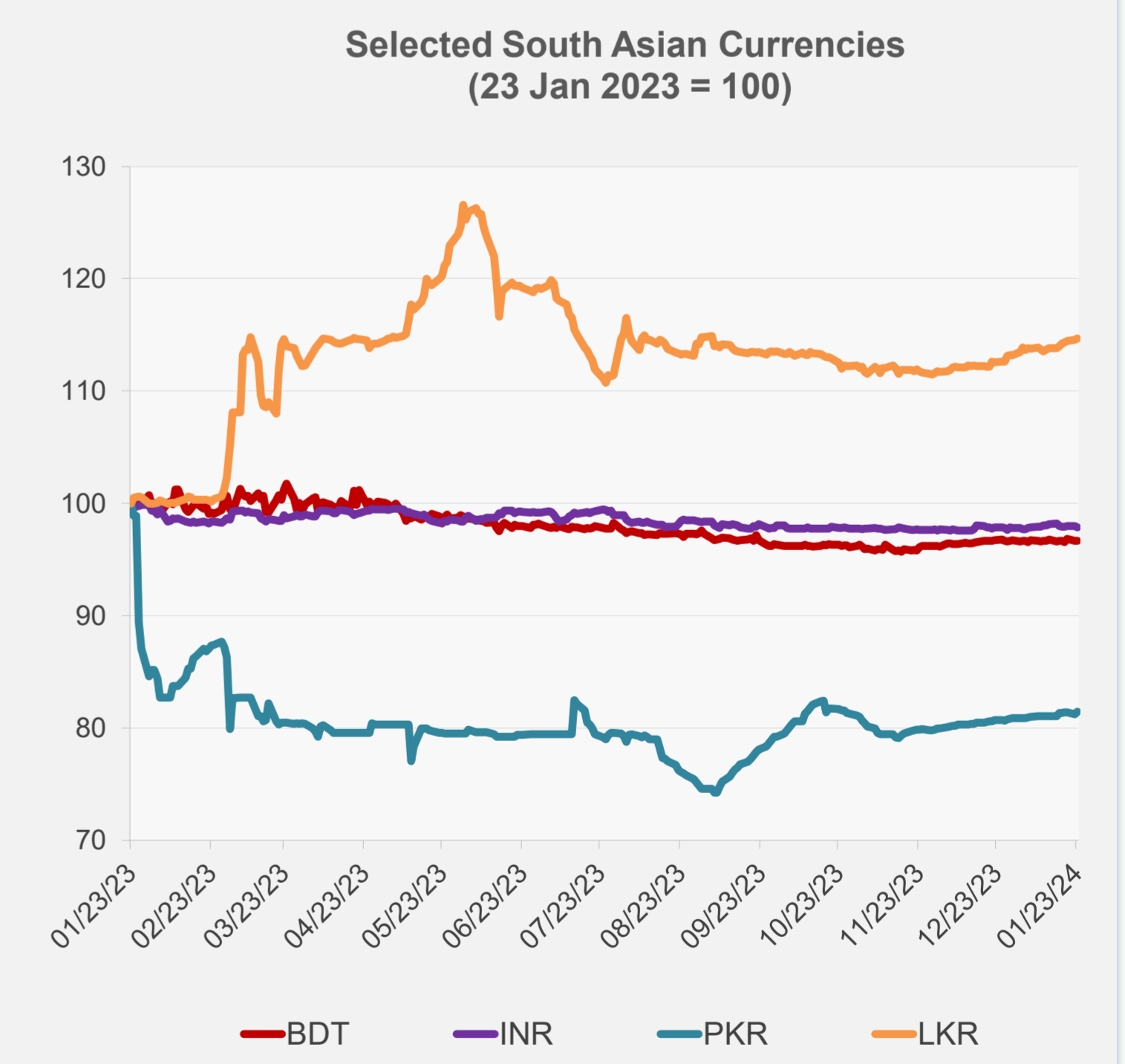
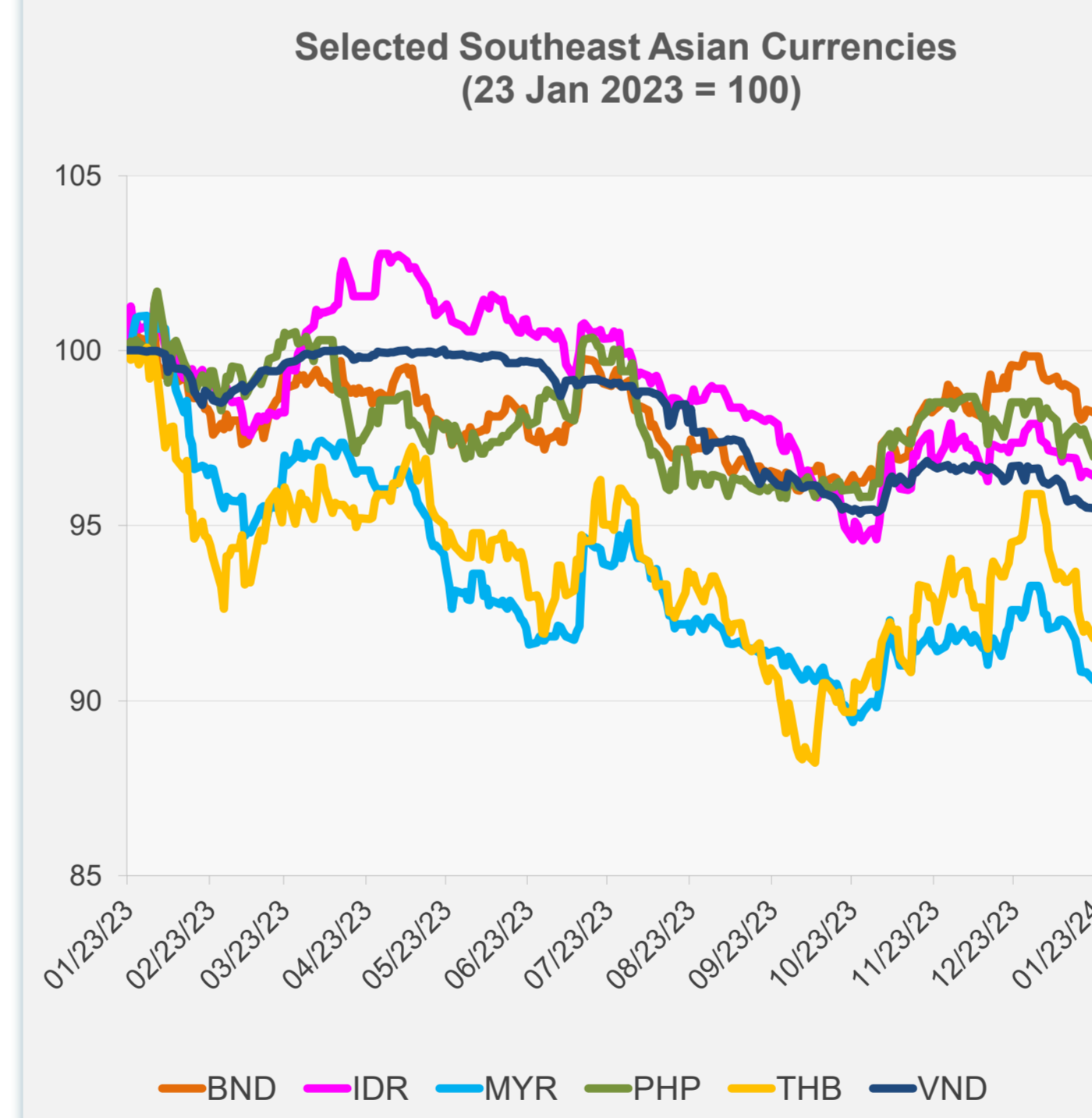


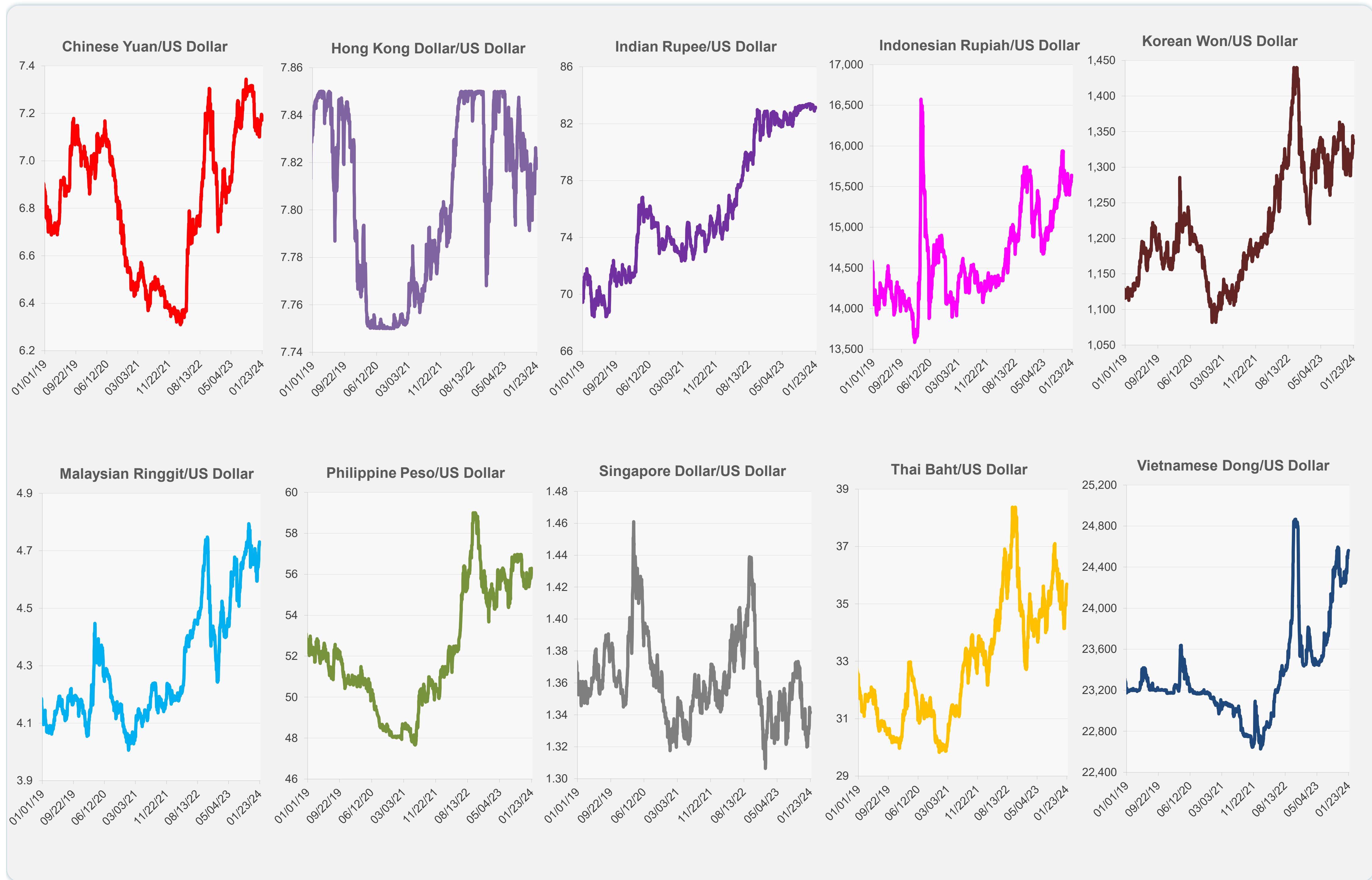
	Latest Closing	% change from Previous Day	% change from 01-Jan-24
Euro	0.92	-0.27	-1.73
Japanese yen (JPY)	148.35	-0.17	-5.03
Bangladeshi taka (BDT)	109.65	-0.02	0.09
Brunei dollar (BND)	1.34	0.04	-1.57
Chinese yuan (CNY)	7.17	0.27	-1.00
Hong Kong dollar (HKD)	7.82	-0.06	-0.13
Indian rupee (INR)	83.16	-0.11	0.09
Indonesian rupiah (IDR)	15,630.00	0.03	-1.49
Korean won (KRW)	1,333.25	0.42	-3.39
Malaysian ringgit (MYR)	4.73	0.07	-2.83
Pakistan rupee (PKR)	279.84	0.25	0.71
Philippine peso (PHP)	56.16	0.23	-1.38
Singapore dollar (SGD)	1.34	0.04	-1.57
Sri Lanka rupee (LKR)	319.47	0.10	1.09
Taipei,China NT dollar (TWD)	31.33	0.06	-1.97
Thai baht (THB)	35.69	-0.05	-4.34
Vietnamese dong (VND)	24,562.00	-0.02	-1.20



NIE = Newly Industrialized Economies



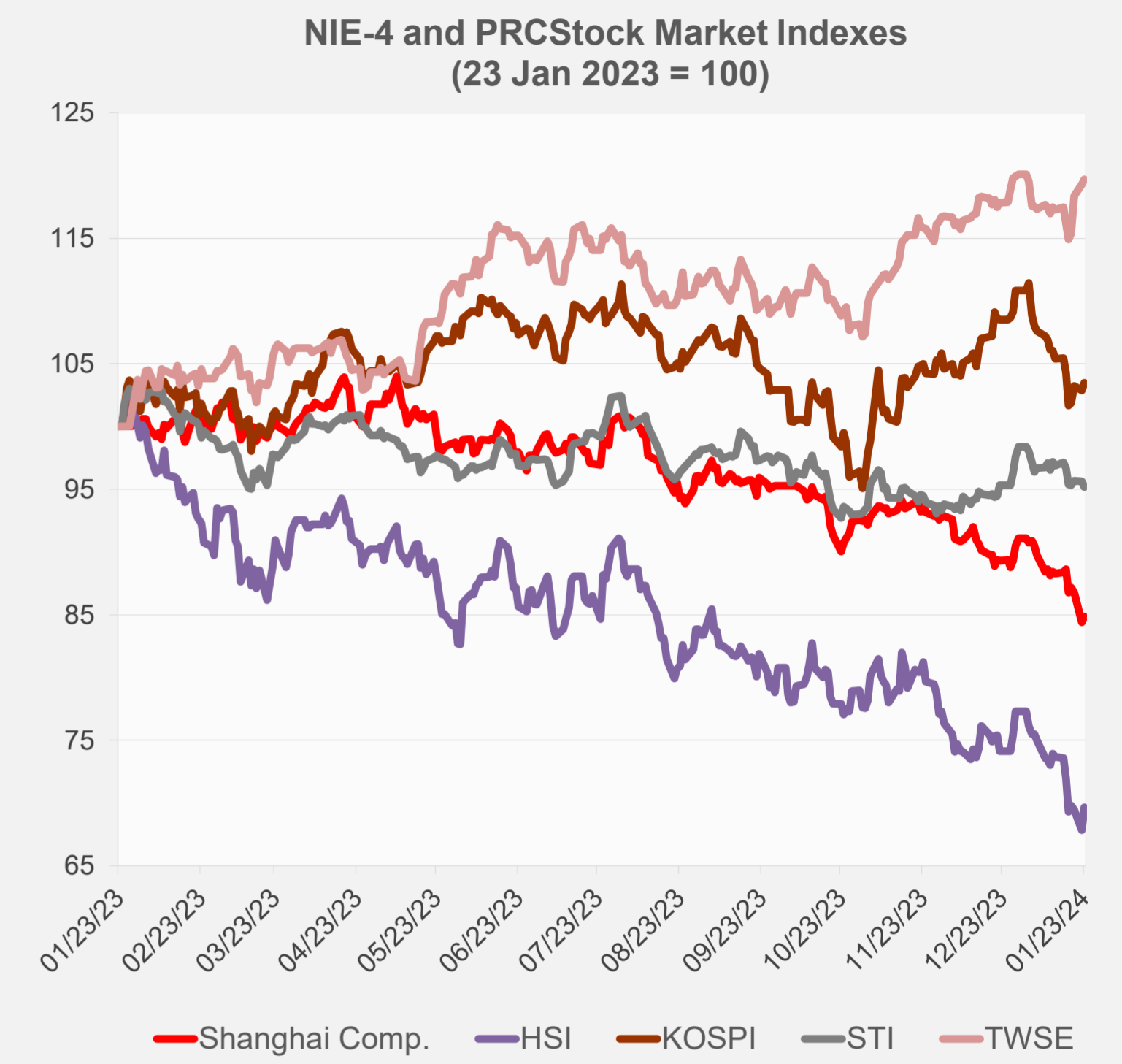
Note: Negative/Decreasing values indicate depreciation of local currency, and positive/increasing values indicate appreciation.  
Source: Bloomberg.



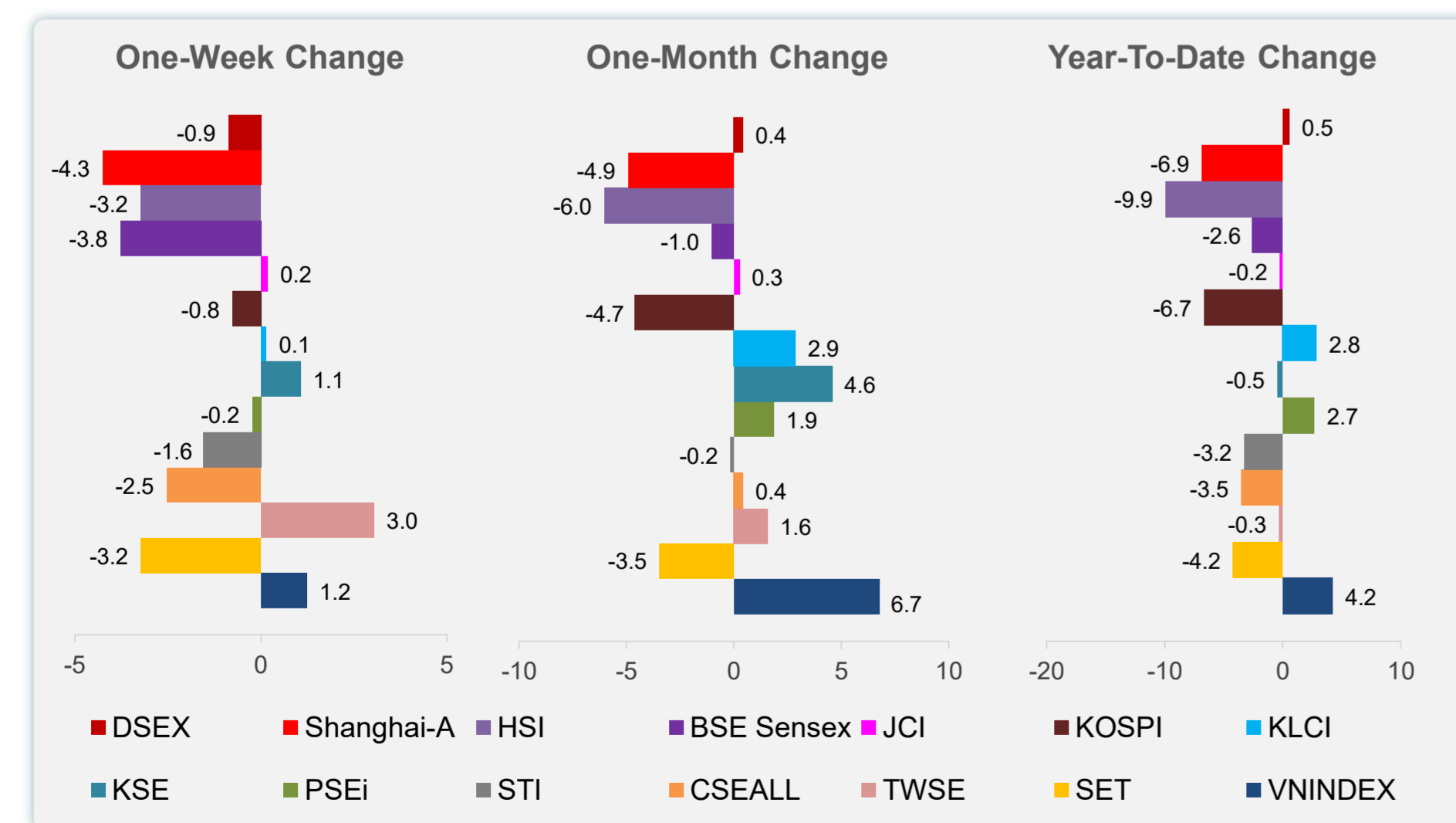
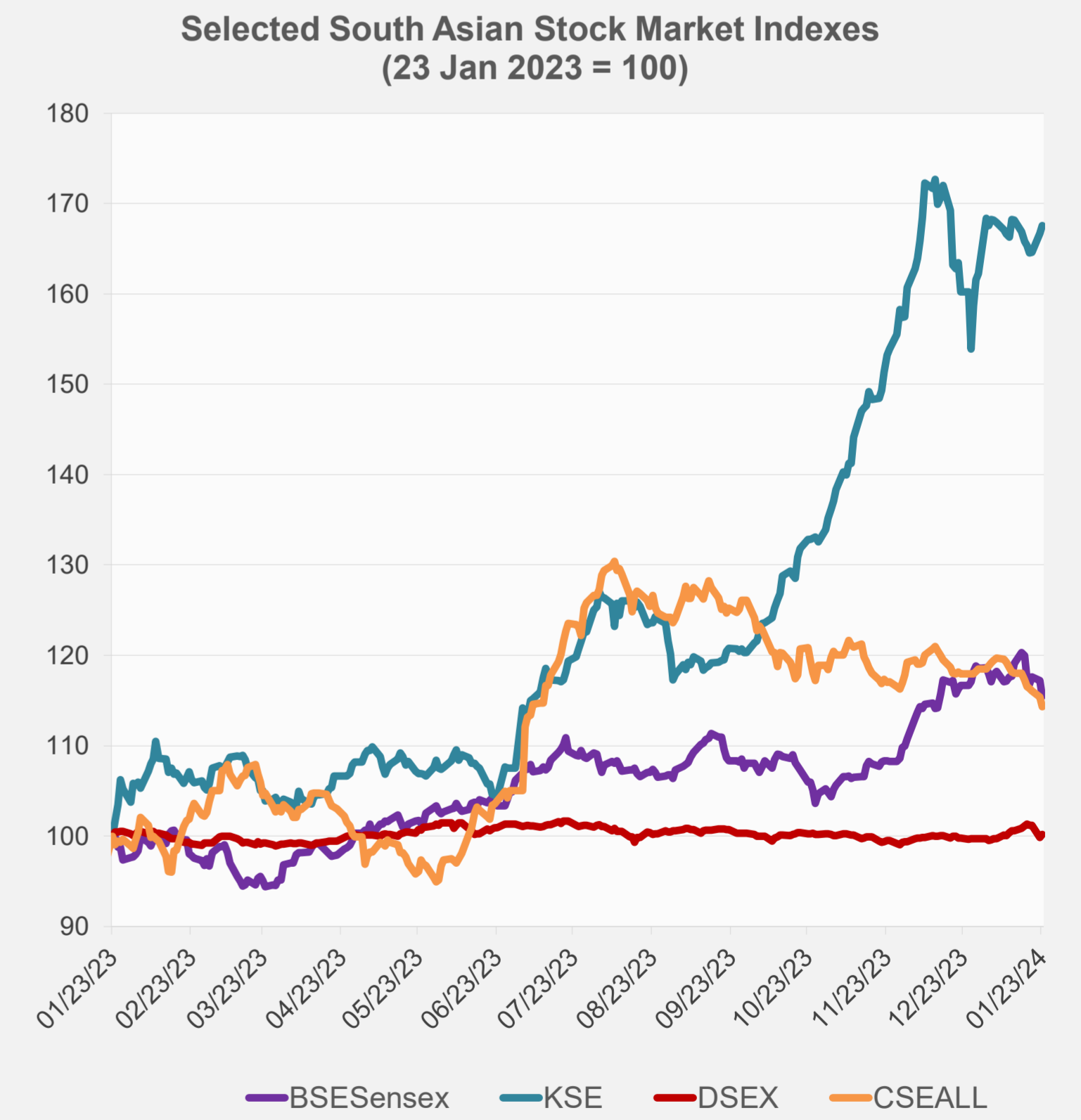
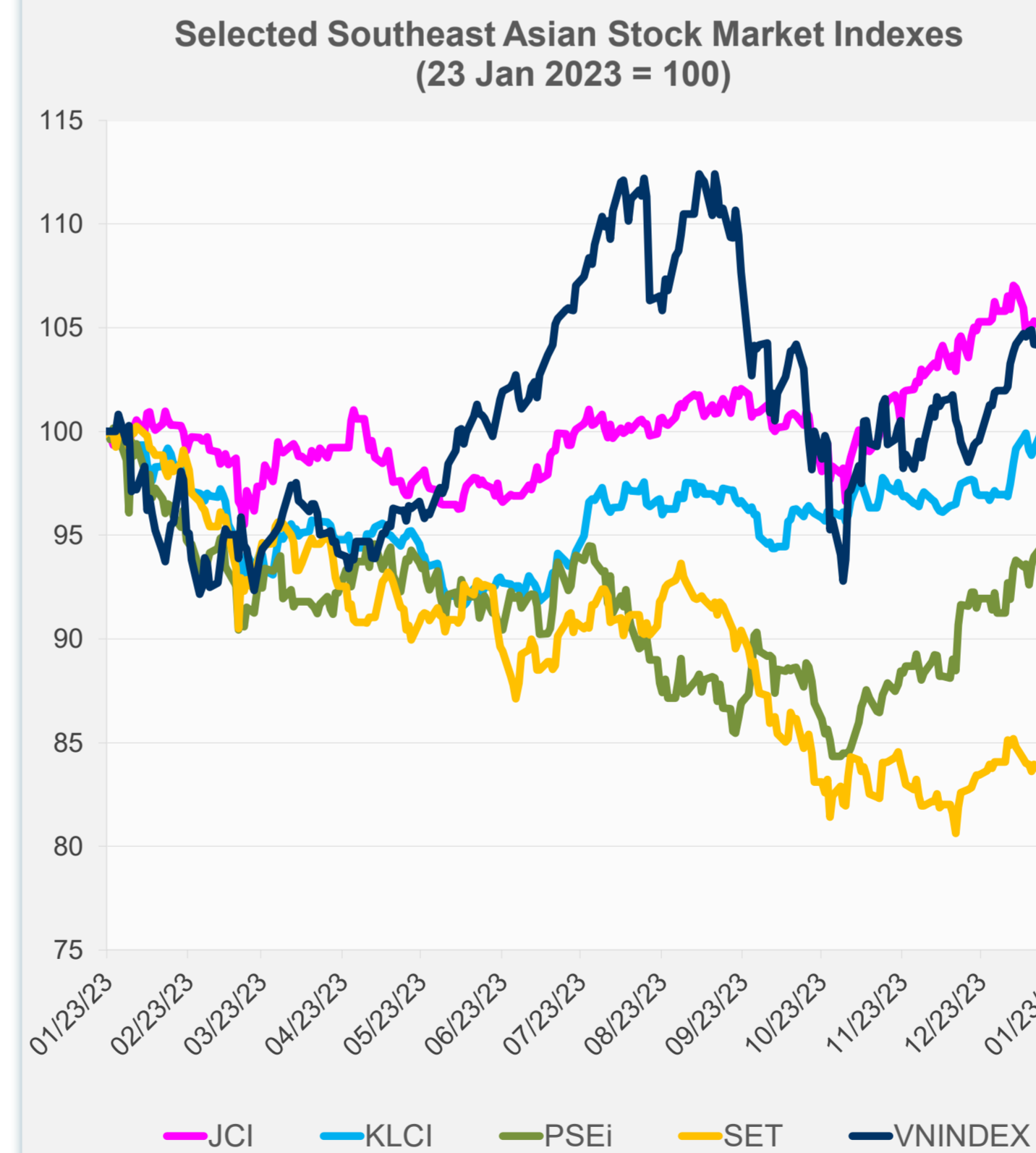
Source: Bloomberg.

Daily Market Watch  
**STOCK INDEXES**

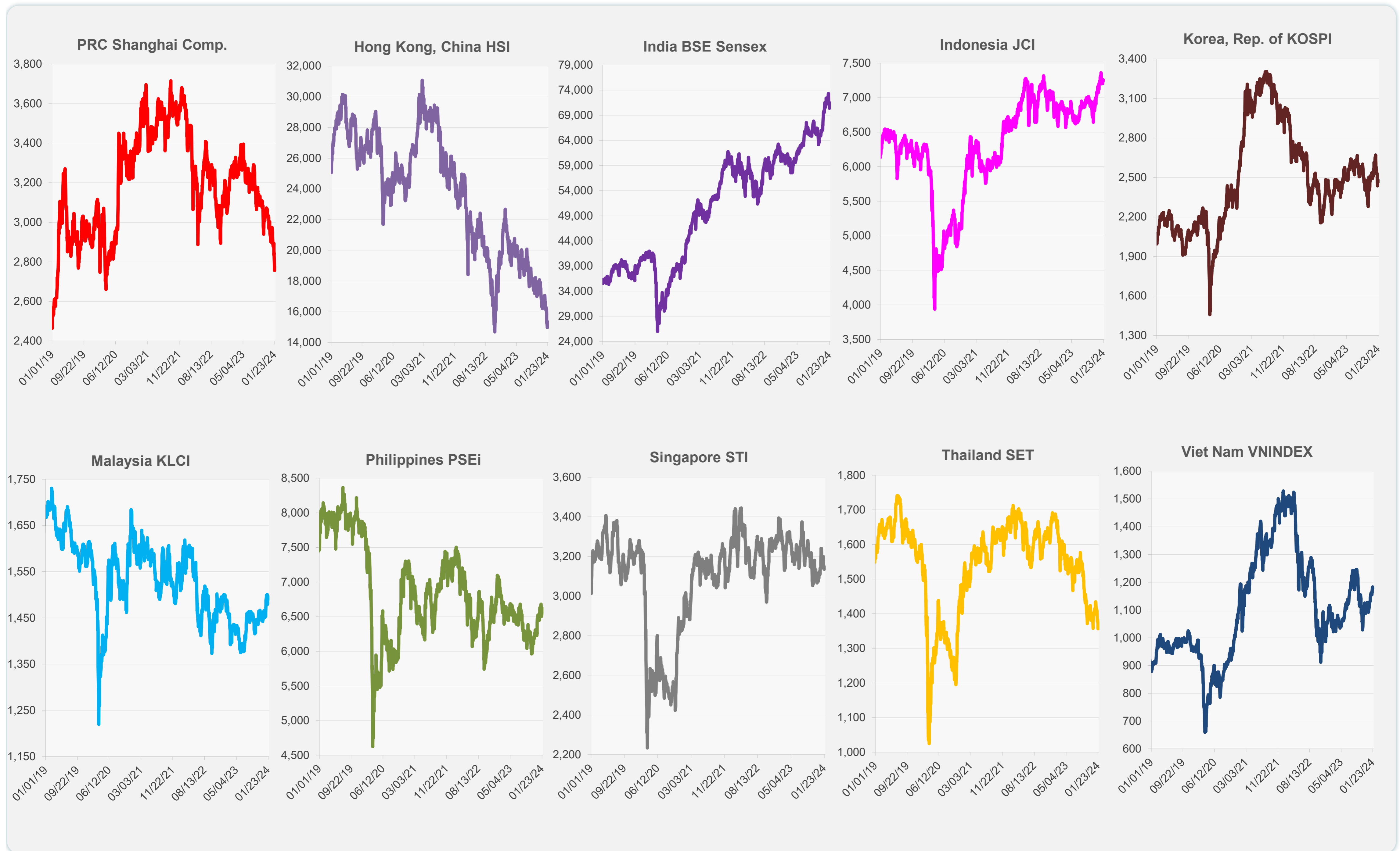
	Latest Closing	% change from Previous Day	% change from 01-Jan-24
US Dow Jones Ind Avg	37,905.45	-0.25	0.57
US NASDAQ	15,425.94	0.43	2.76
US S&P 500	4,864.60	0.29	1.99
UK FTSE 100	7,485.73	-0.03	-3.20
EURO STOXX 50	4,465.91	-0.32	-1.23
Japan NIKKEI 225	36,517.57	-0.08	9.12
Bangladesh DSEX	6,276.26	0.35	0.53
PRC Shanghai Comp.	2,770.98	0.53	-6.86
Hong Kong, China HSI	15,353.98	2.63	-9.93
India BSE Sensex	70,370.55	-1.47	-2.63
Indonesia JCI	7,256.23	0.11	-0.23
Korea, Rep. of KOSPI	2,478.61	0.58	-6.65
Malaysia KLCI	1,496.11	0.33	2.85
Pakistan KSE 100	64,423.94	0.53	-0.46
Philippines PSEi	6,621.88	0.58	2.66
Singapore STI	3,135.25	-0.44	-3.24
Sri Lanka CSEALL	10,279.09	-0.89	-3.52
Taipei, China TWSE	17,874.59	0.33	-0.31
Thailand SET	1,356.54	-0.98	-4.19
Viet Nam VNINDEX	1,177.50	-0.45	4.21



NIE = Newly Industrialized Economies



Source: Bloomberg.



Source: Bloomberg.

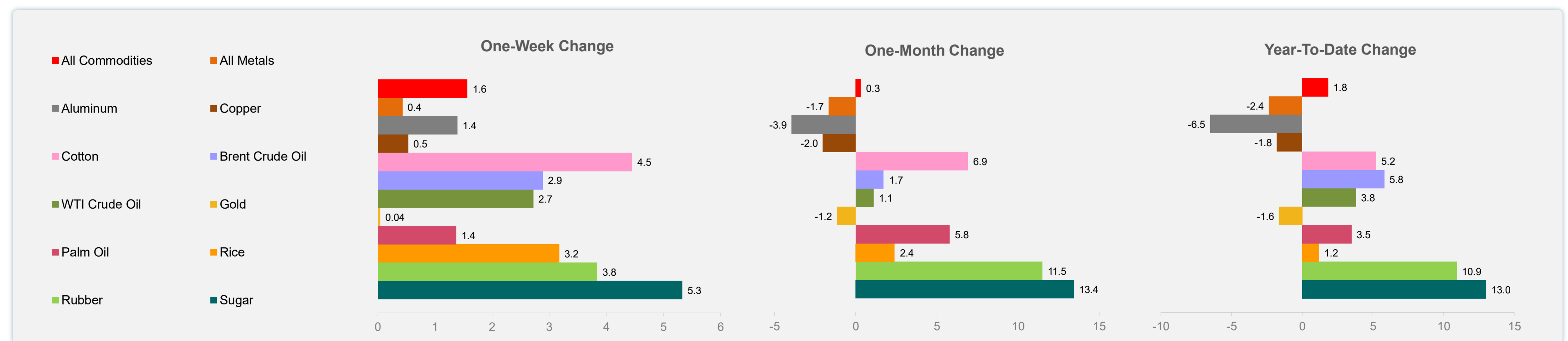
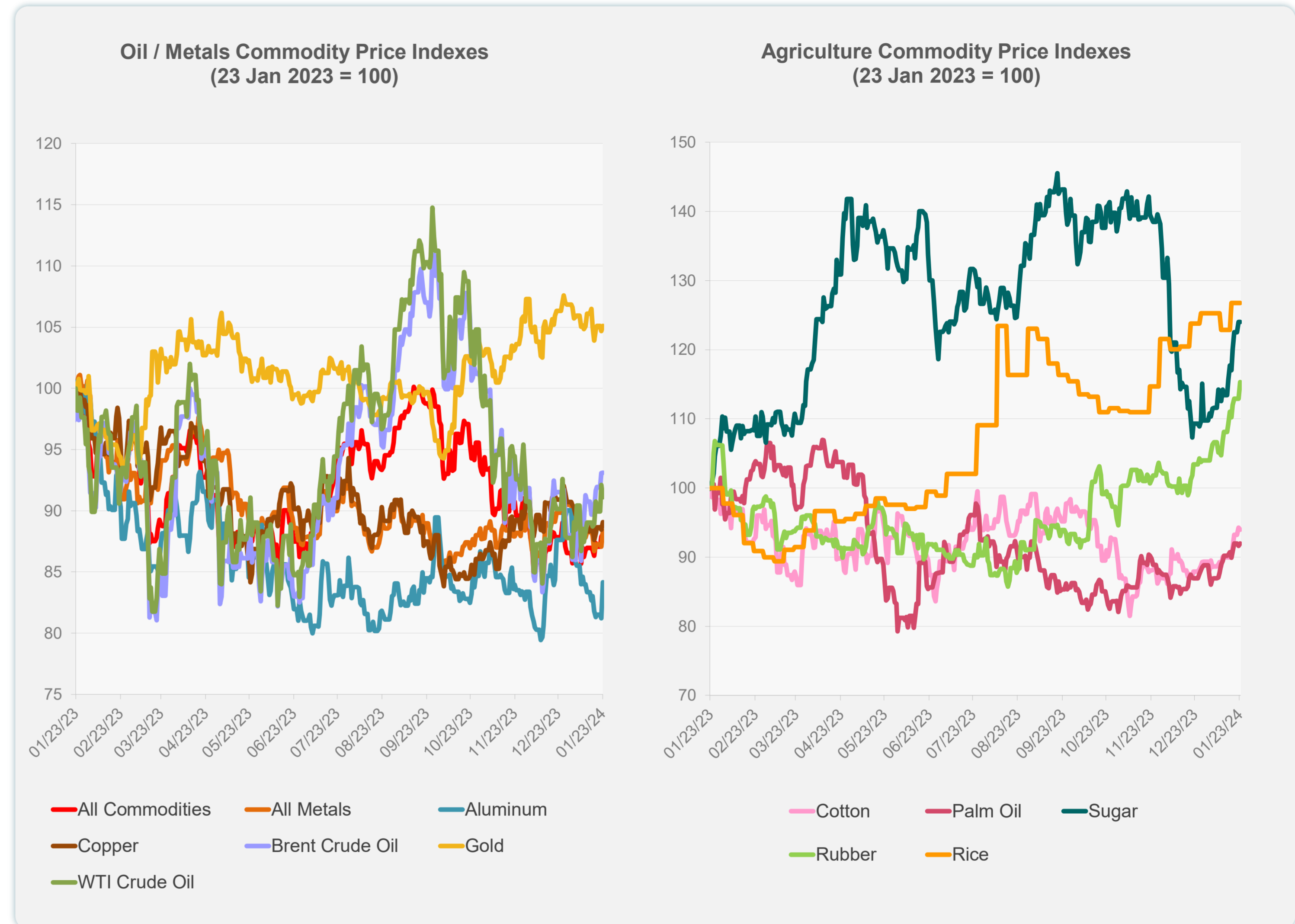
Daily Market Watch  
**COMMODITY PRICES**

24 January 2024, 9:30 AM Manila

	Unit	Latest Closing	% change from Previous Day	% change from 01-Jan-24
S&P All Commodities	US\$	545.43	0.29	1.83
S&P All Metals	US\$	270.88	1.48	-2.36
Aluminum	US\$/metric ton	2,192.86	3.65	-6.51
Copper	US\$/metric ton	8,312.00	0.70	-1.79
Cotton	US cents/lb	82.60	-0.28	5.22
Brent Crude Oil	US\$/barrel	82.11	0.03	5.81
WTI Crude Oil	US\$/barrel	74.37	-1.09	3.80
Gold	US\$/troy oz	2,029.28	0.37	-1.63
Palm Oil	US\$/metric tonne	837.19	0.32	3.49
Rice <sup>1</sup>	US\$/metric ton	682.00	0.00	1.19
Rubber <sup>2</sup>	US\$/kg	192.00	2.13	10.92
Sugar	US cents/lb	23.13	0.00	12.99

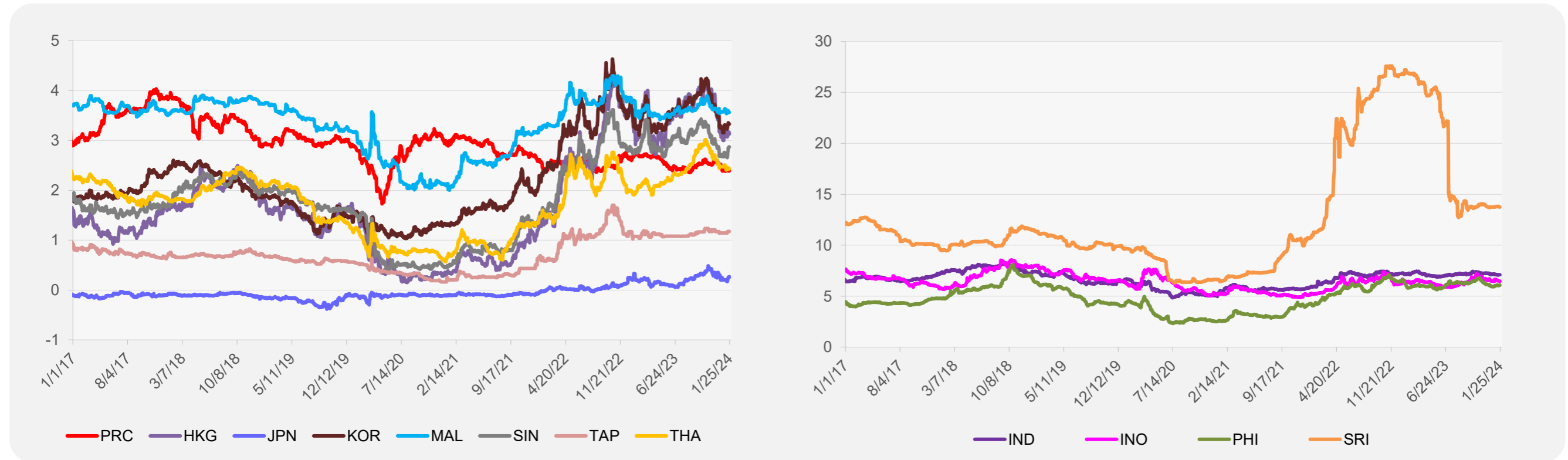
<sup>1</sup> Latest closing price from 17 January 2024.

<sup>2</sup> Singapore Exchange, Ribbed Smoked Sheet Rubber.

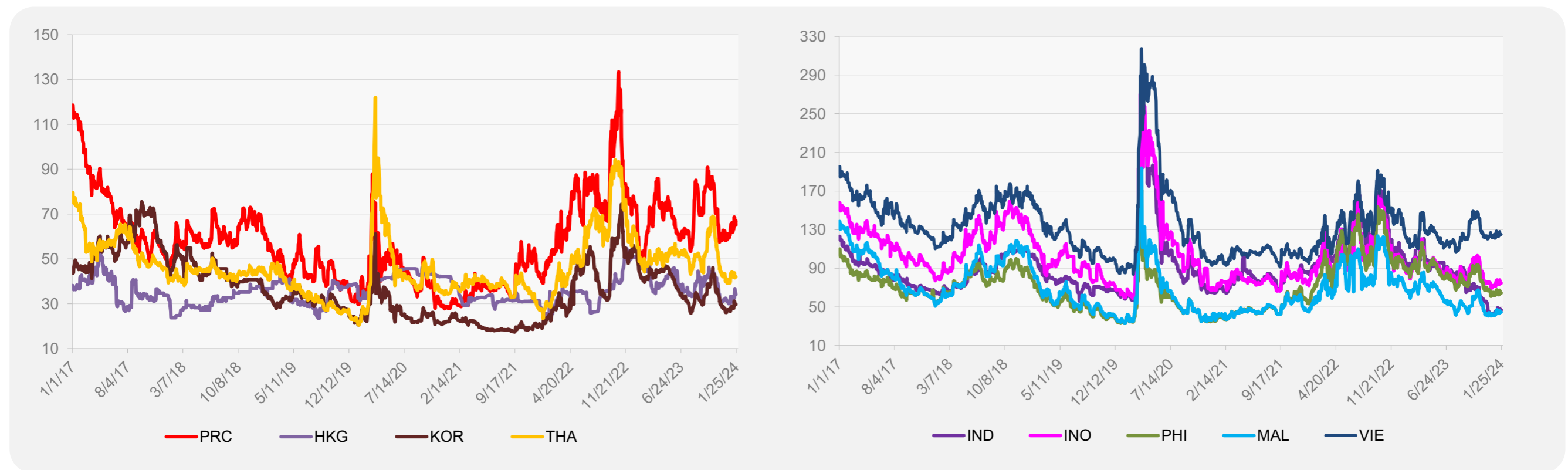


Source: Bloomberg.

### 5-YEAR LOCAL CURRENCY GOVERNMENT BOND YIELDS (%)



### 5-YEAR CREDIT DEFAULT SWAP<sup>1</sup>



<sup>1</sup> In USD and based on sovereign bonds.  
Source: Bloomberg.