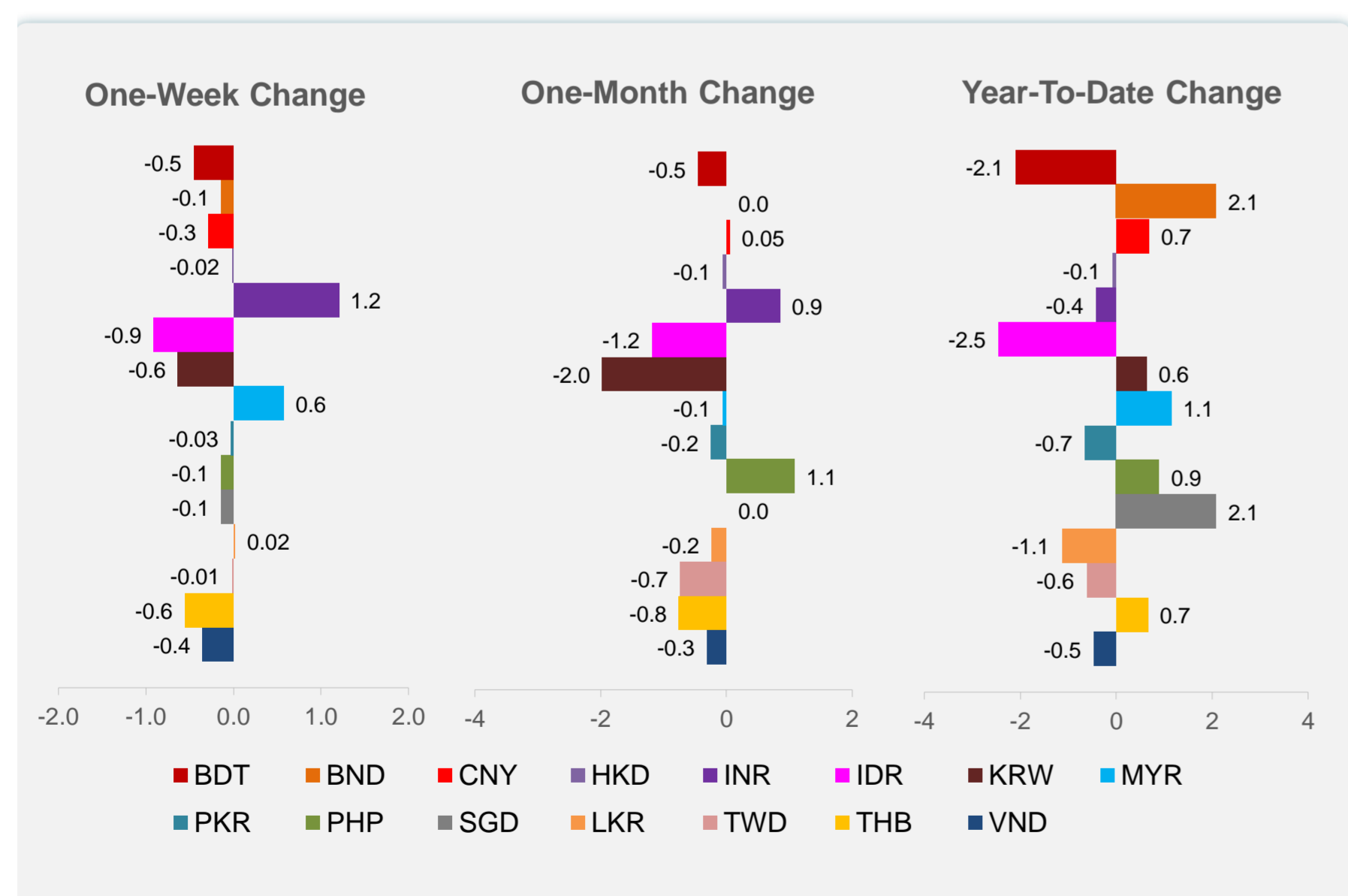
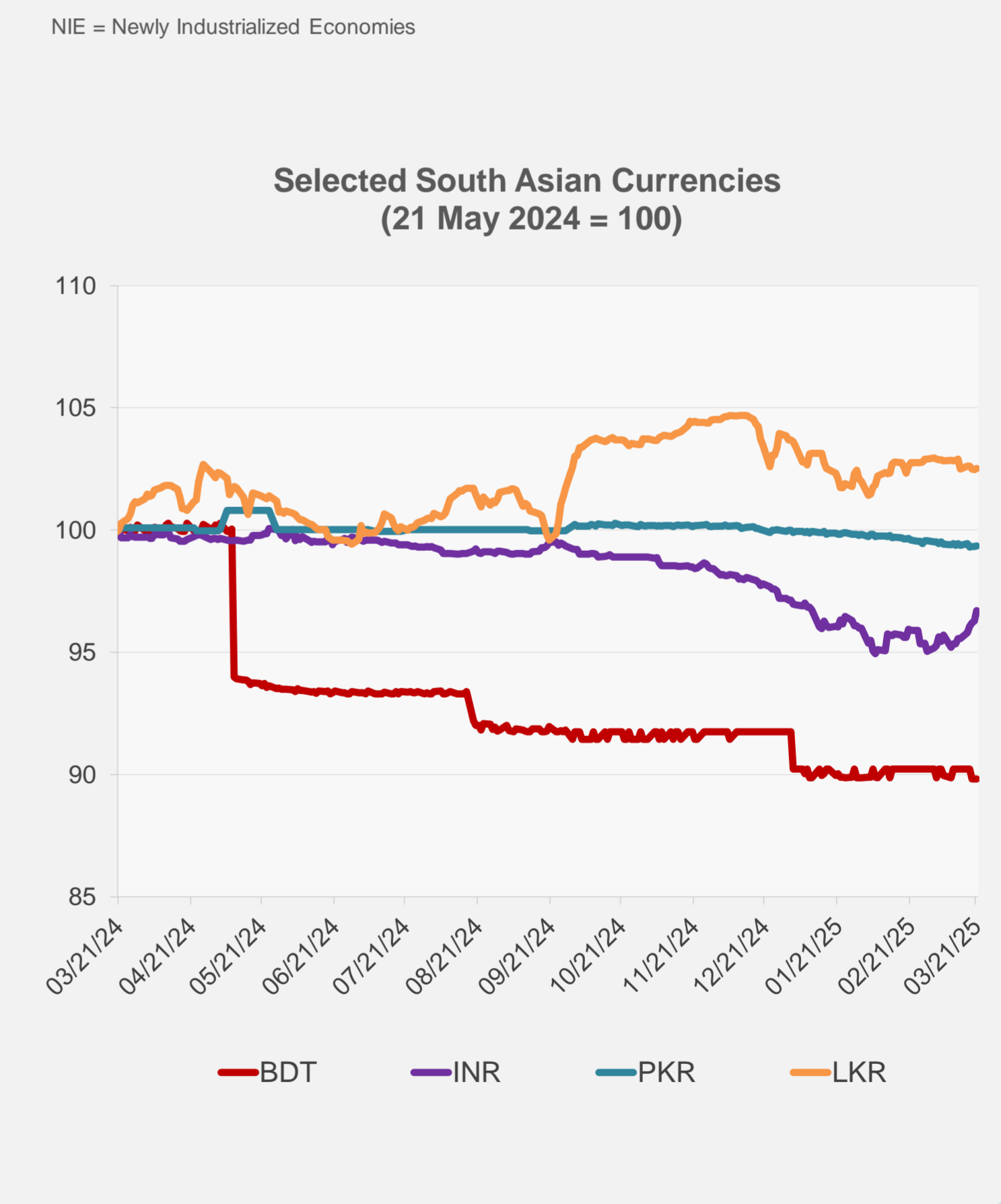
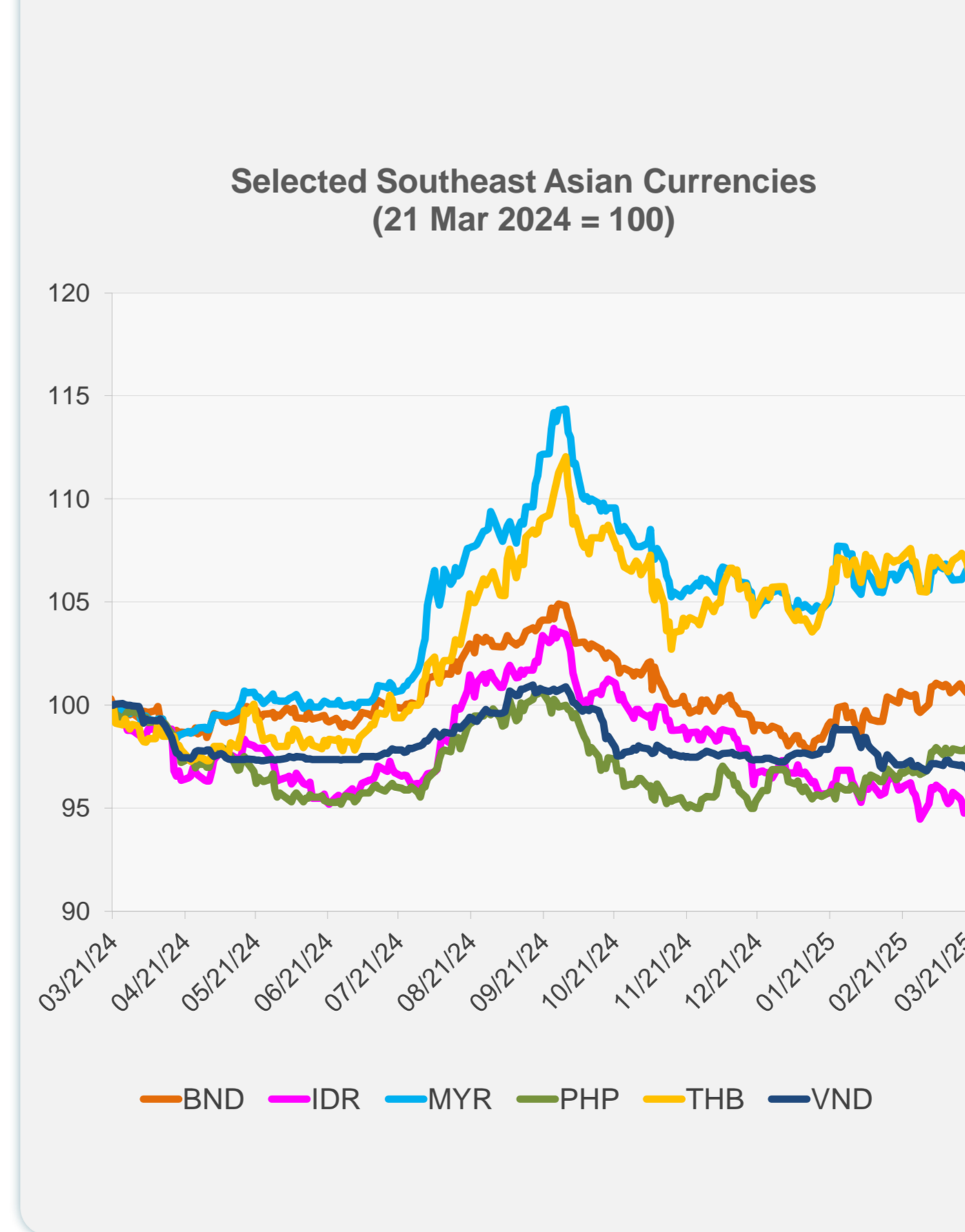
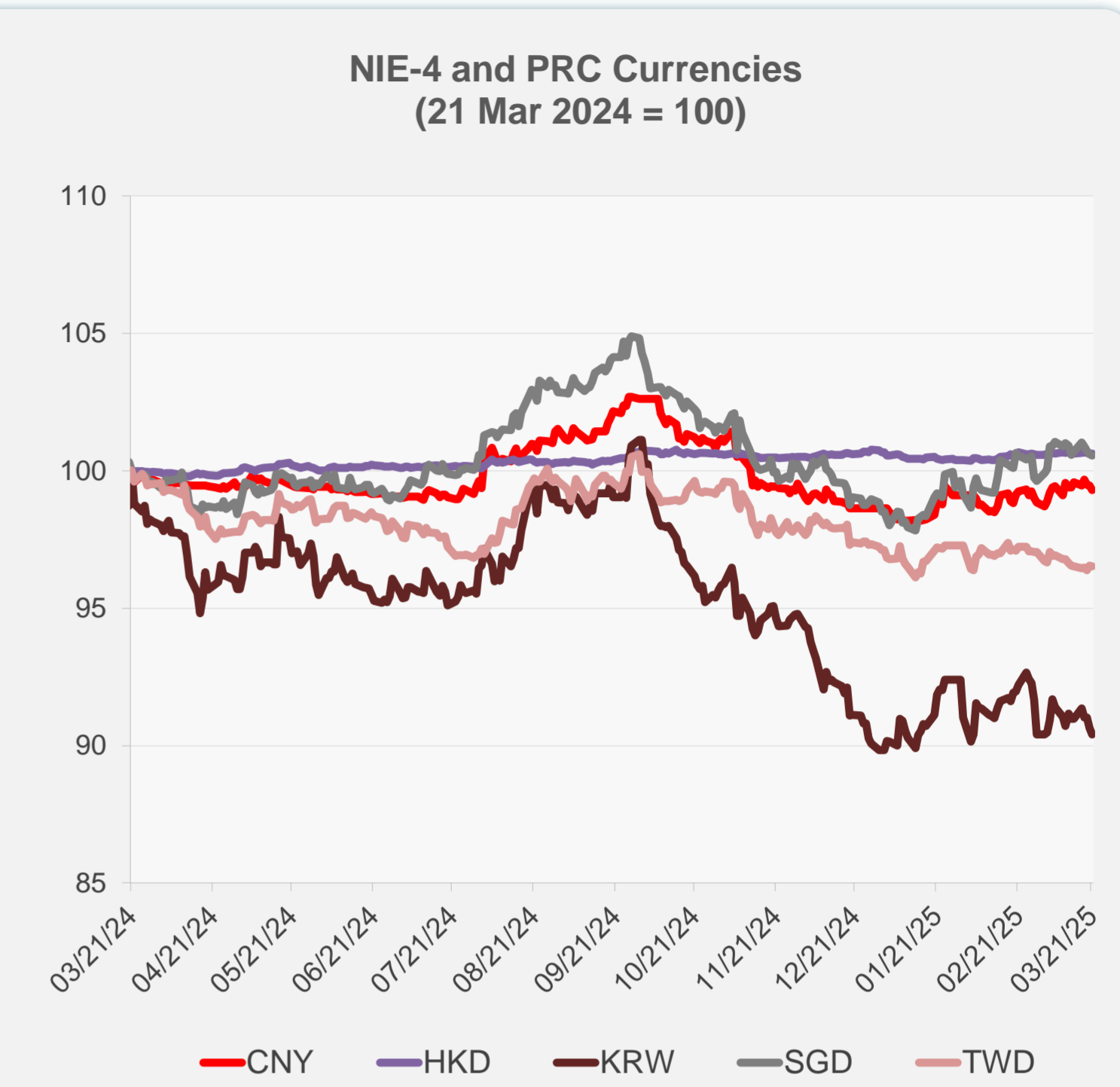
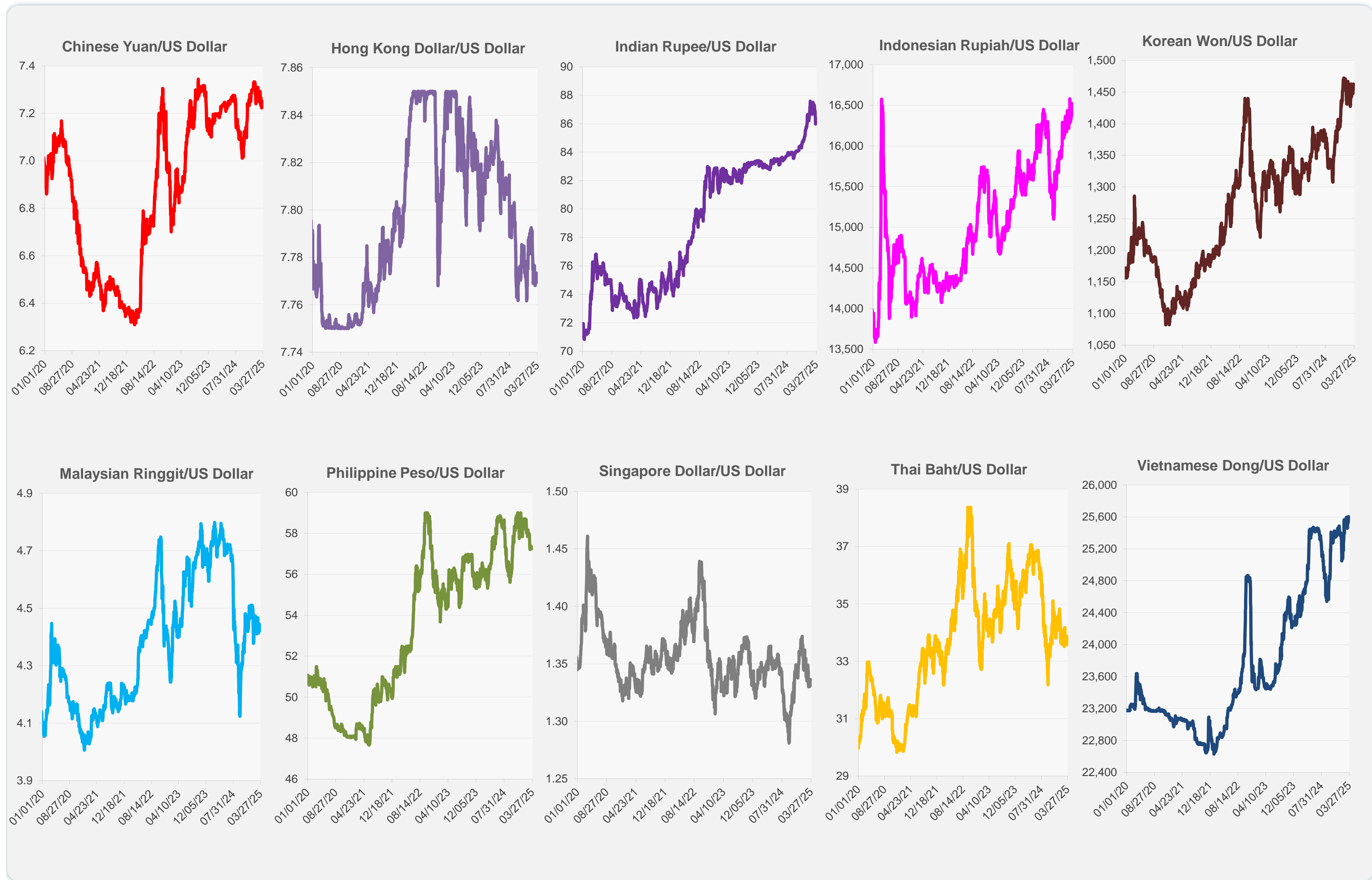


	Latest Closing	% change from Previous Day	% change from 01-Jan-25
Euro	0.93	-0.36	4.38
Japanese yen (JPY)	148.99	-0.08	5.48
Bangladeshi taka (BDT)	122.05	0.00	-2.09
Brunei dollar (BND)	1.34	-0.04	2.08
Chinese yuan (CNY)	7.25	-0.16	0.68
Hong Kong dollar (HKD)	7.77	-0.01	-0.07
Indian rupee (INR)	85.98	0.47	-0.42
Indonesian rupiah (IDR)	16,500.00	-0.15	-2.45
Korean won (KRW)	1,462.95	-0.28	0.63
Malaysian ringgit (MYR)	4.42	0.11	1.14
Pakistan rupee (PKR)	280.20	0.02	-0.65
Philippine peso (PHP)	57.34	-0.18	0.89
Singapore dollar (SGD)	1.34	-0.04	2.08
Sri Lanka rupee (LKR)	296.35	0.03	-1.13
Taipei,China NT dollar (TWD)	32.99	-0.02	-0.62
Thai baht (THB)	33.87	-0.50	0.66
Vietnamese dong (VND)	25,605.00	-0.21	-0.47



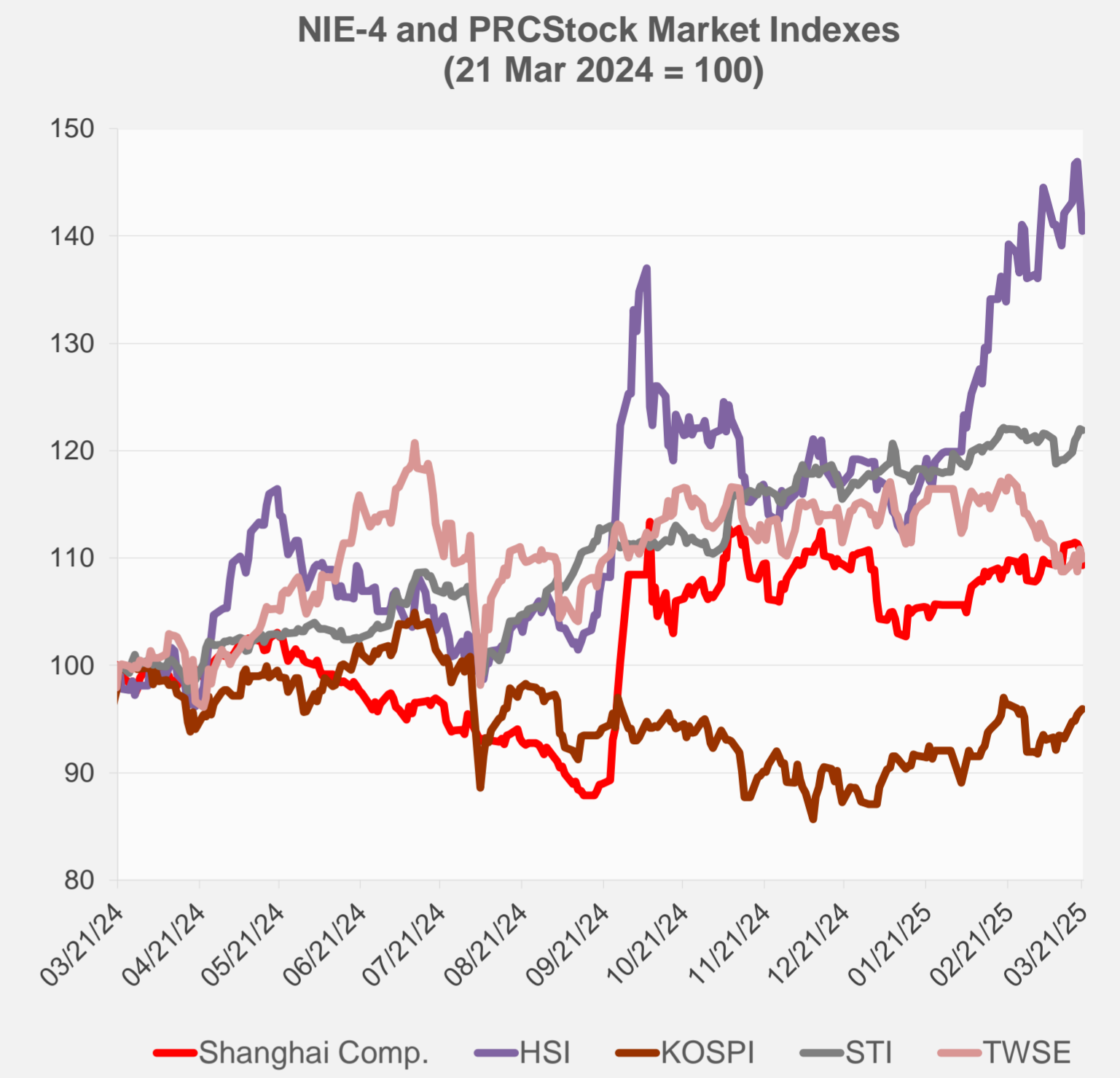
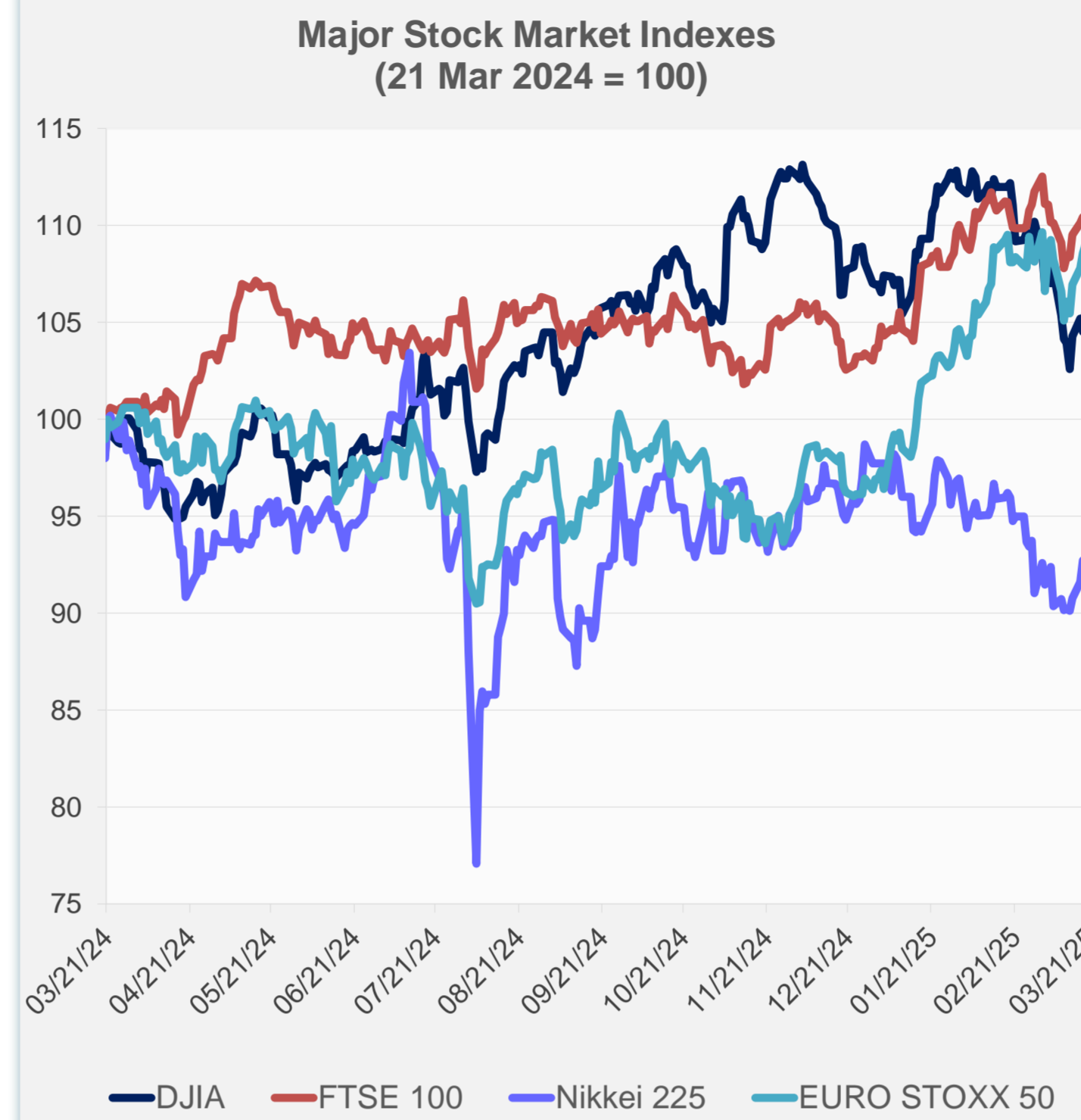
Note: Negative/Decreasing values indicate depreciation of local currency, and positive/increasing values indicate appreciation.
Source: ADB calculations using data from Haver Analytics.



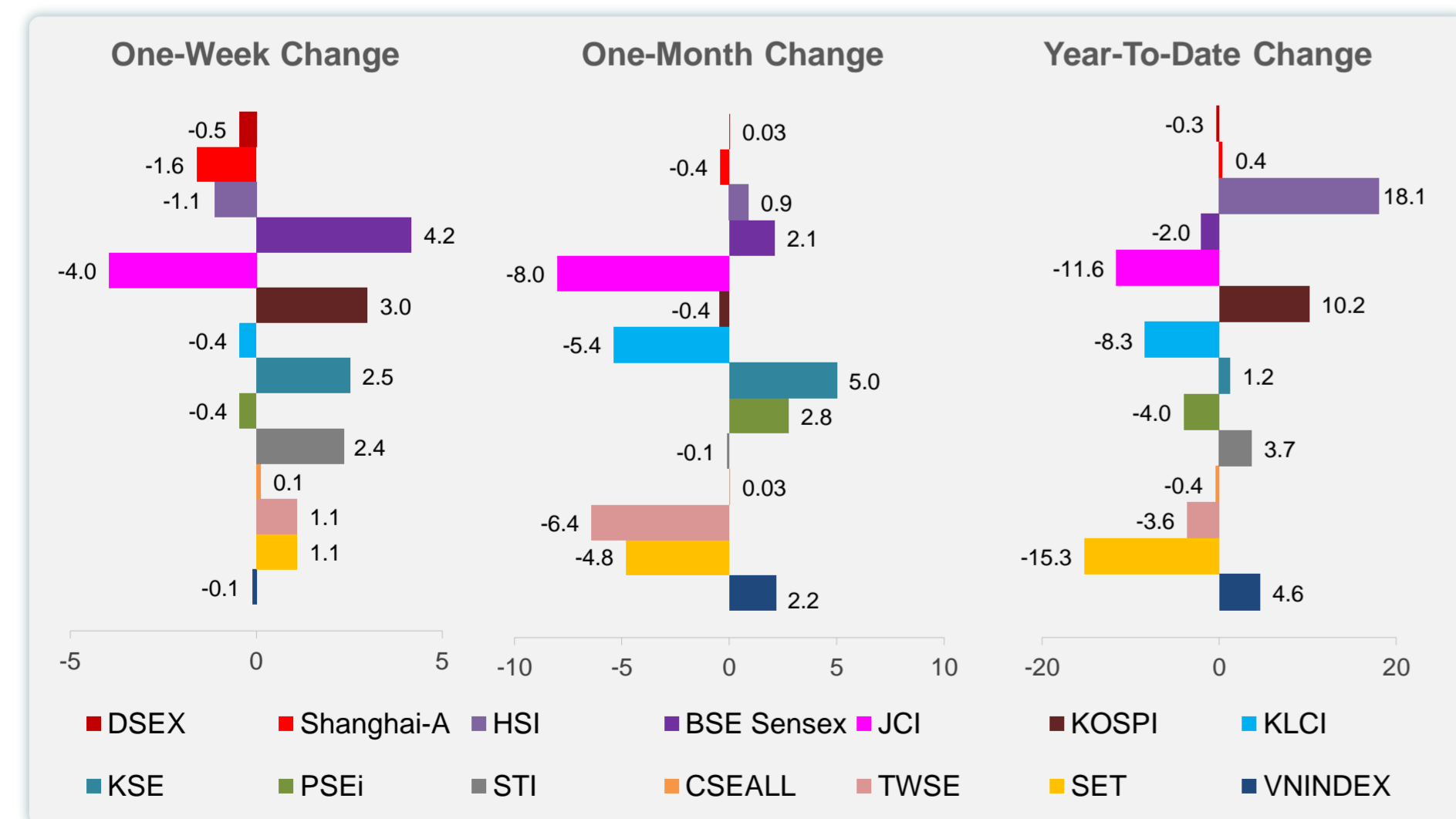
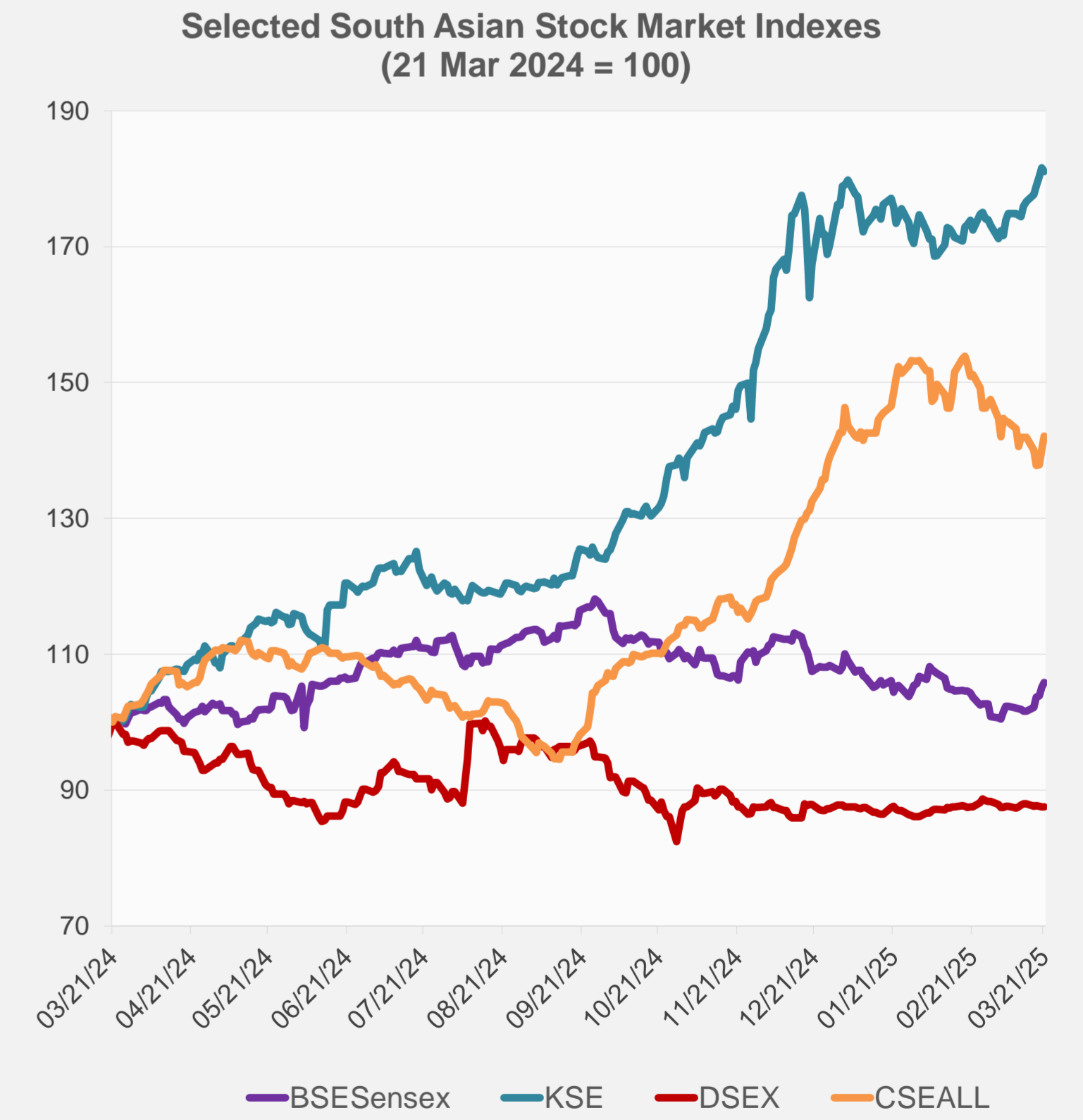
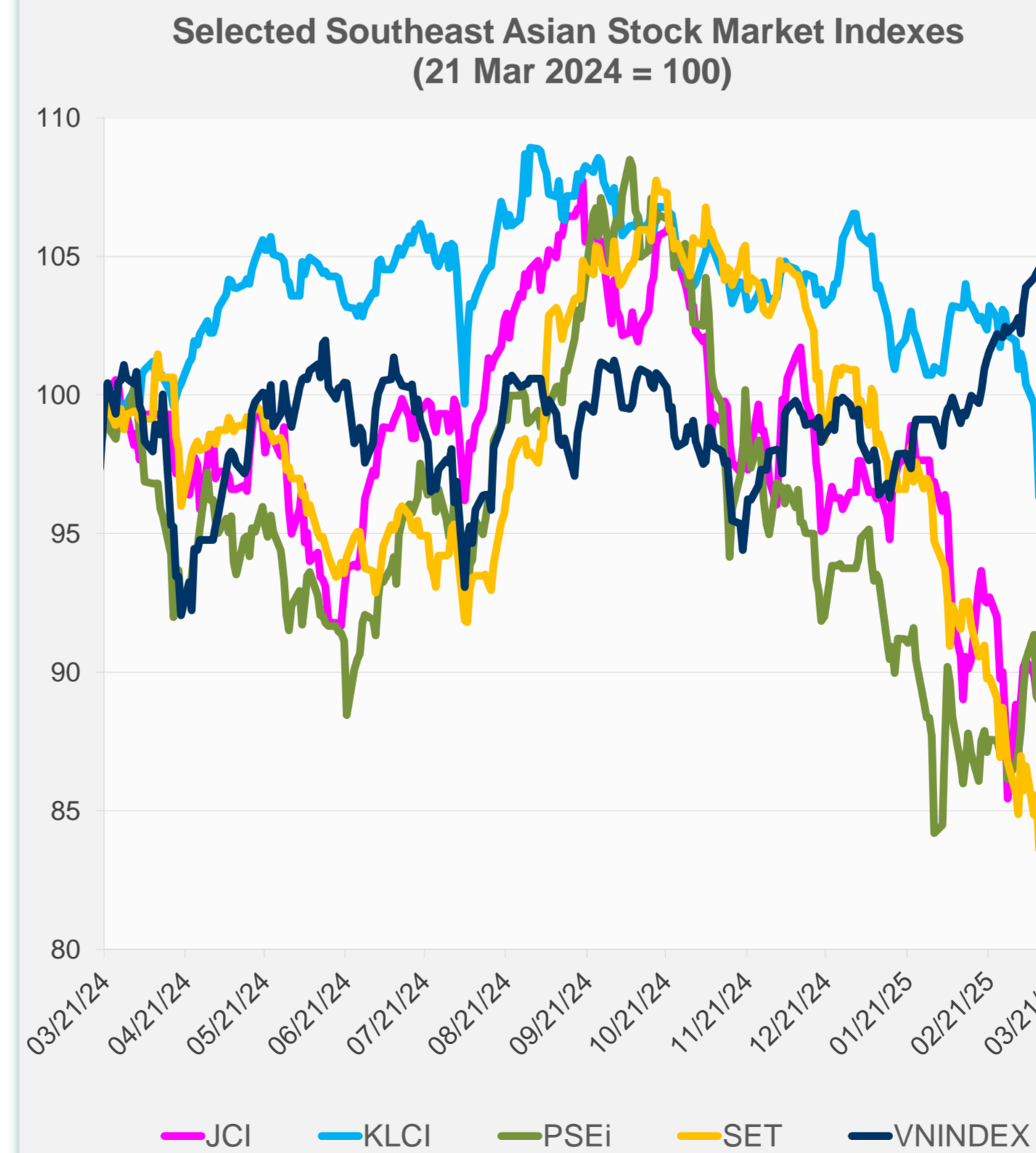
Source: Haver Analytics.

Daily Market Watch
STOCK INDEXES

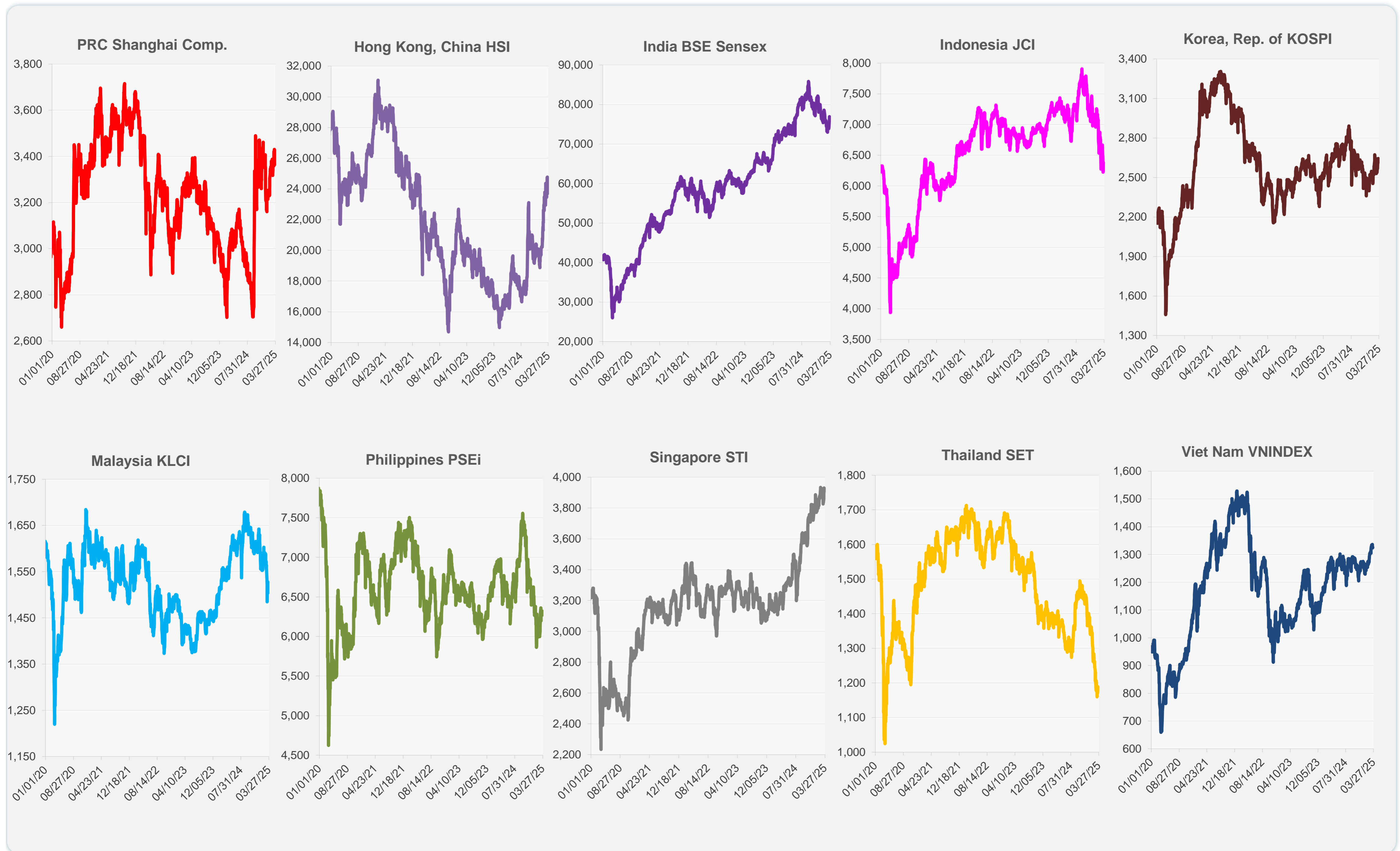
	Latest Closing	% change from Previous Day	% change from 01-Jan-25
US Dow Jones Ind Avg	41,985.35	0.08	-1.31
US NASDAQ	17,784.05	0.52	-7.91
US S&P 500	5,667.56	0.08	-3.64
UK FTSE 100	8,646.79	-0.63	5.80
EURO STOXX 50	5,423.83	-0.50	10.78
Japan NIKKEI 225	37,677.06	-0.20	-5.56
Bangladesh DSEX	5,201.70	0.00	-0.32
PRC Shanghai Comp.	3,364.83	-1.29	0.39
Hong Kong, China HSI	23,689.72	-2.19	18.09
India BSE Sensex	76,905.51	0.73	-2.04
Indonesia JCI	6,258.18	-1.94	-11.61
Korea, Rep. of KOSPI	2,643.13	0.23	10.15
Malaysia KLCI	1,505.45	0.09	-8.33
Pakistan KSE 100	118,442.17	-0.28	1.23
Philippines PSEi	6,266.75	-0.89	-4.01
Singapore STI	3,926.45	-0.10	3.67
Sri Lanka CSEALL	15,879.33	1.38	-0.41
Taipei, China TWSE	22,209.10	-0.75	-3.59
Thailand SET	1,186.61	0.41	-15.25
Viet Nam VNINDEX	1,324.88	0.07	4.59



NIE = Newly Industrialized Economies



Sources: ADB calculations using data from CEIC Data Company and Haver Analytics.



Sources: CEIC Data Company and Haver Analytics.

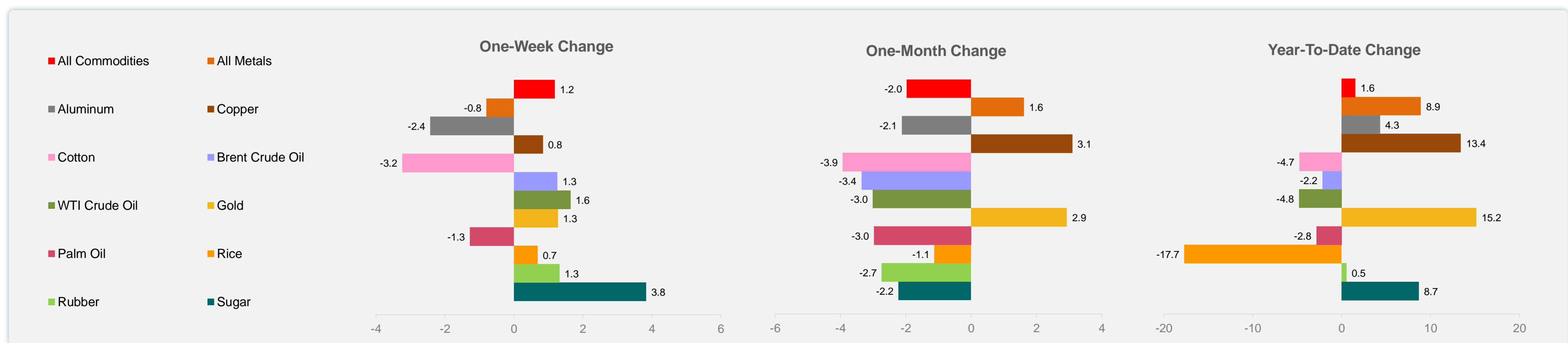
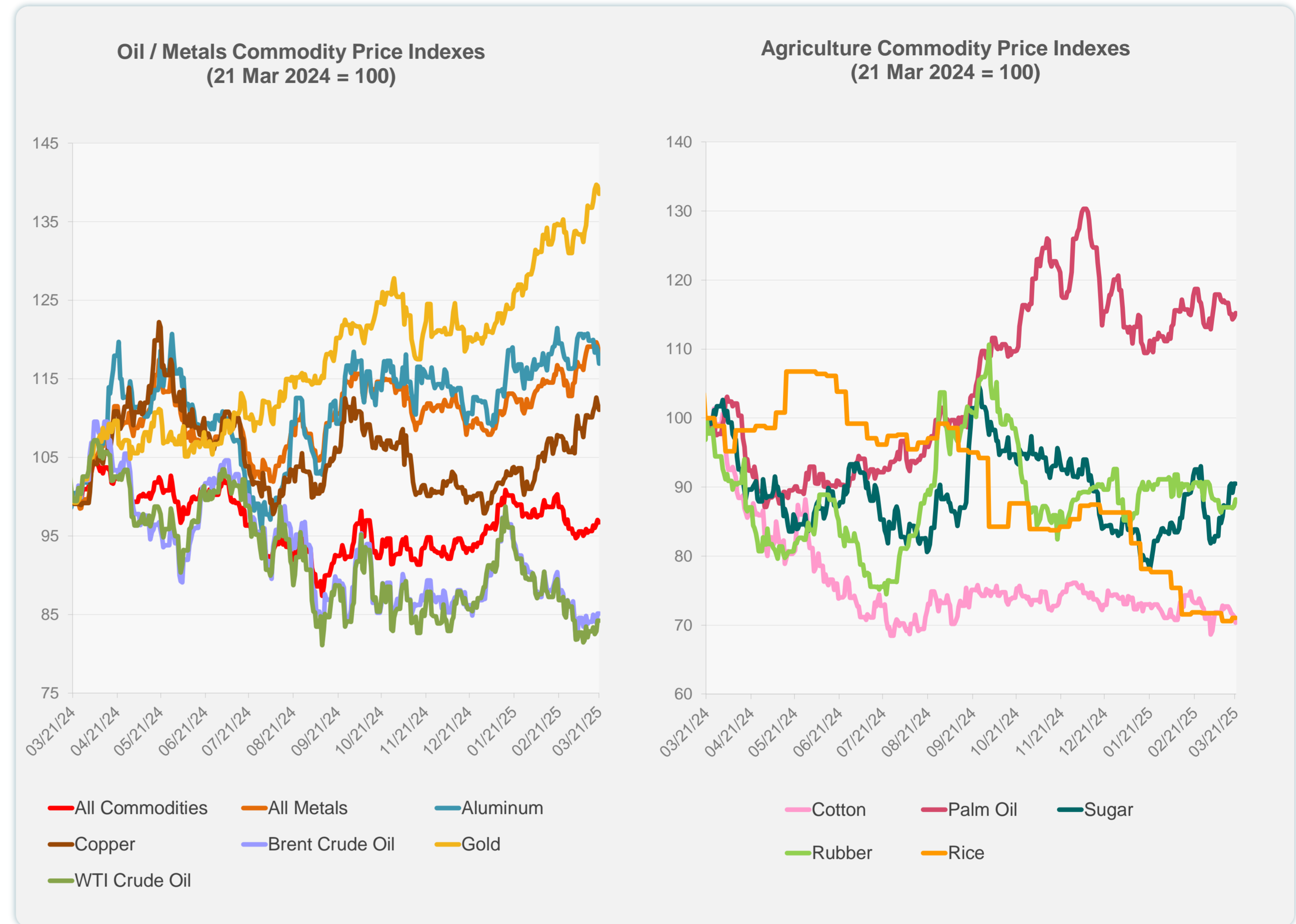
Daily Market Watch
COMMODITY PRICES

24 March 2025, 9:00 AM Manila

	Unit	Latest Closing	% change from Previous Day	% change from 01-Jan-25
S&P All Commodities	US\$	558.22	-0.28	1.56
S&P All Metals	US\$	334.82	-0.94	8.93
Aluminum	US\$/metric ton	2,635.98	-1.49	4.32
Copper	US\$/metric ton	9,813.48	-0.73	13.42
Cotton	US cents/lb	62.77	-1.27	-4.75
Brent Crude Oil	US\$/barrel	72.51	-0.01	-2.15
WTI Crude Oil	US\$/barrel	68.28	0.03	-4.80
Gold	US\$/troy oz	3,022.15	-0.75	15.15
Palm Oil	US\$/metric tonne	1,069.00	0.50	-2.83
Rice ¹	US\$/metric ton	442.00	0.00	-17.69
Rubber ²	US\$/kg	238.10	1.06	0.55
Sugar	US cents/lb	19.78	0.00	8.68

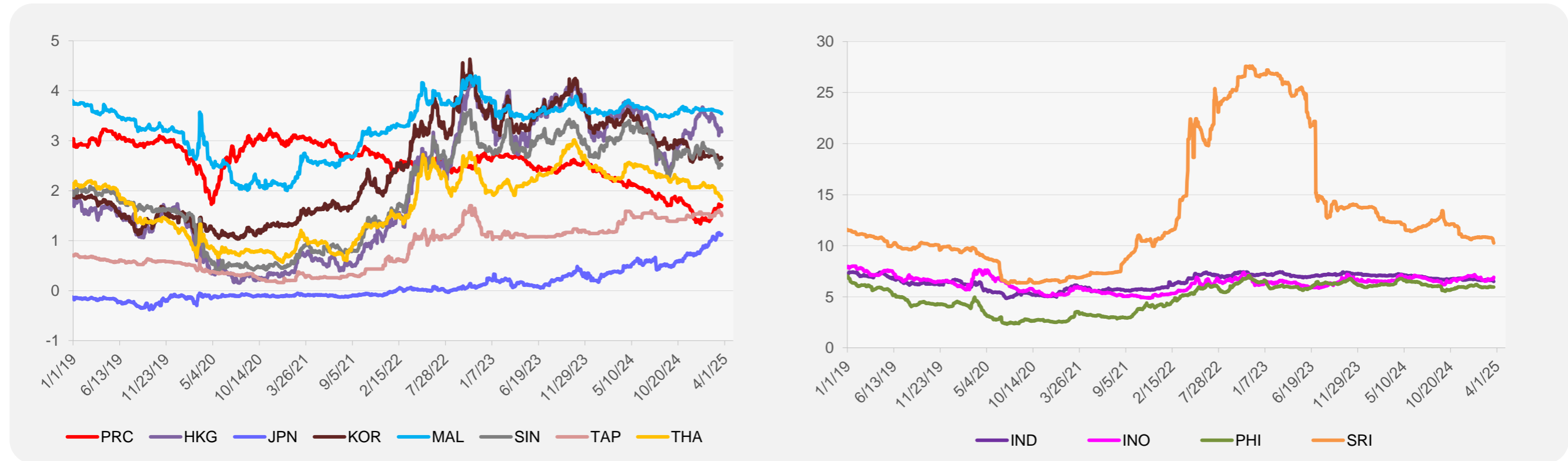
¹ Latest closing price from 19 March 2025.

² Singapore Exchange, Ribbed Smoked Sheet Rubber.

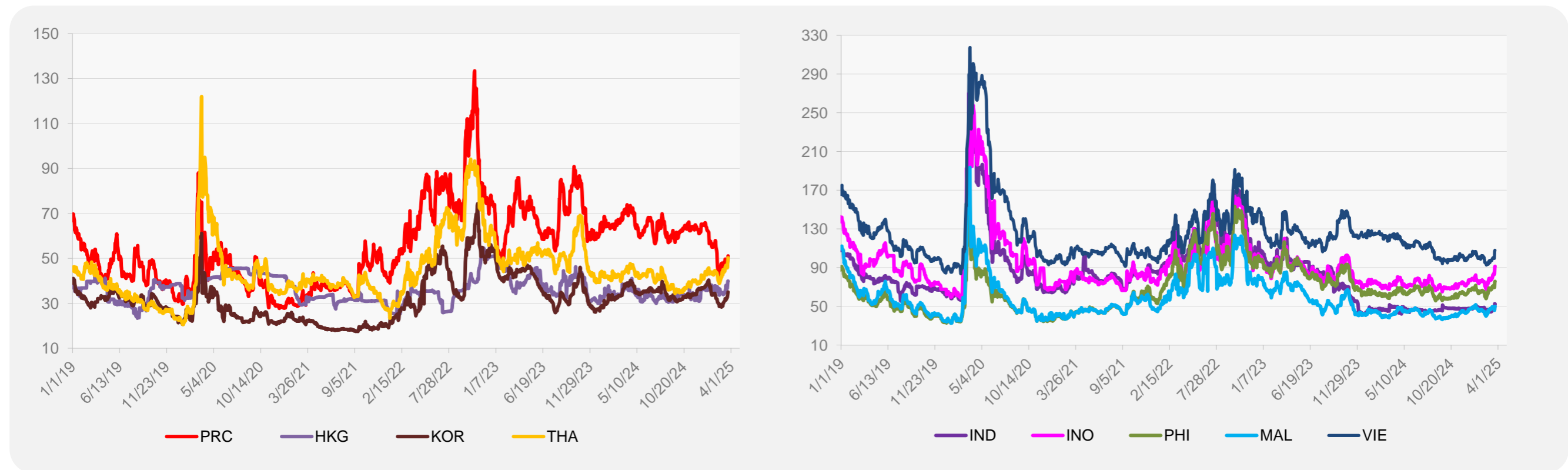


Source: ADB calculations using data from Bloomberg.

5-YEAR LOCAL CURRENCY GOVERNMENT BOND YIELDS (%)



5-YEAR CREDIT DEFAULT SWAP¹



¹ In USD and based on sovereign bonds.
Source: ADB calculations using data from Bloomberg.