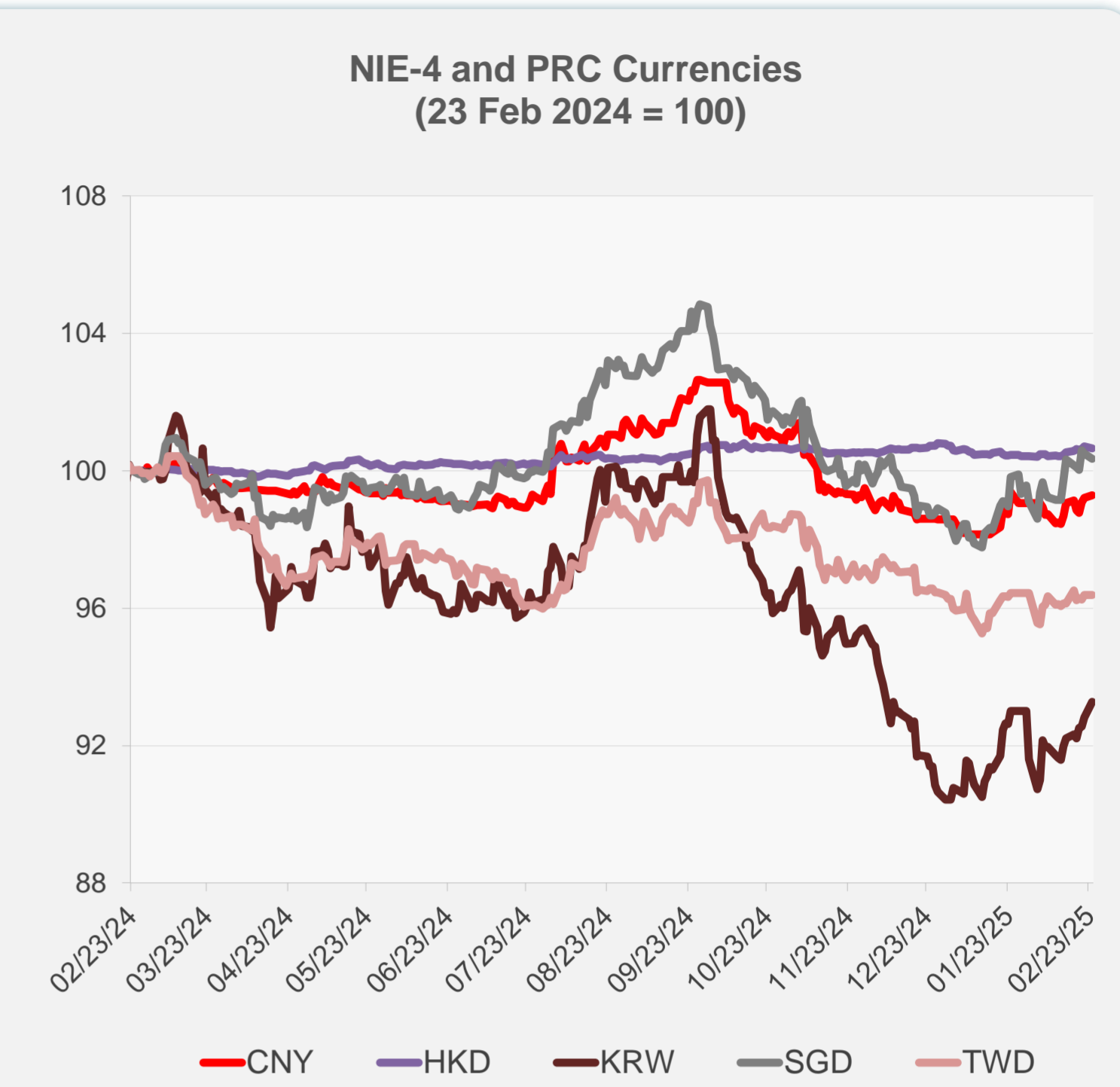
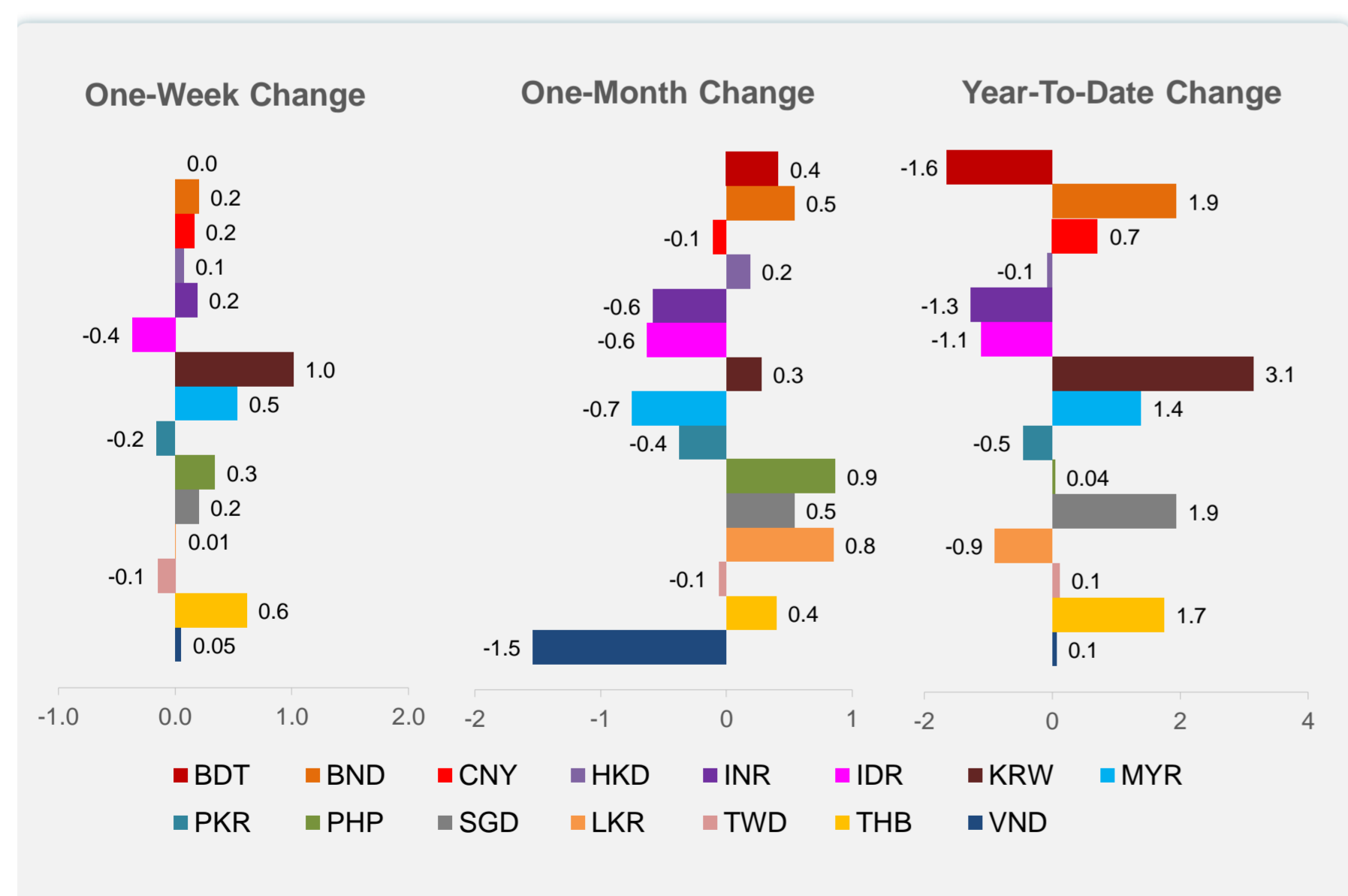
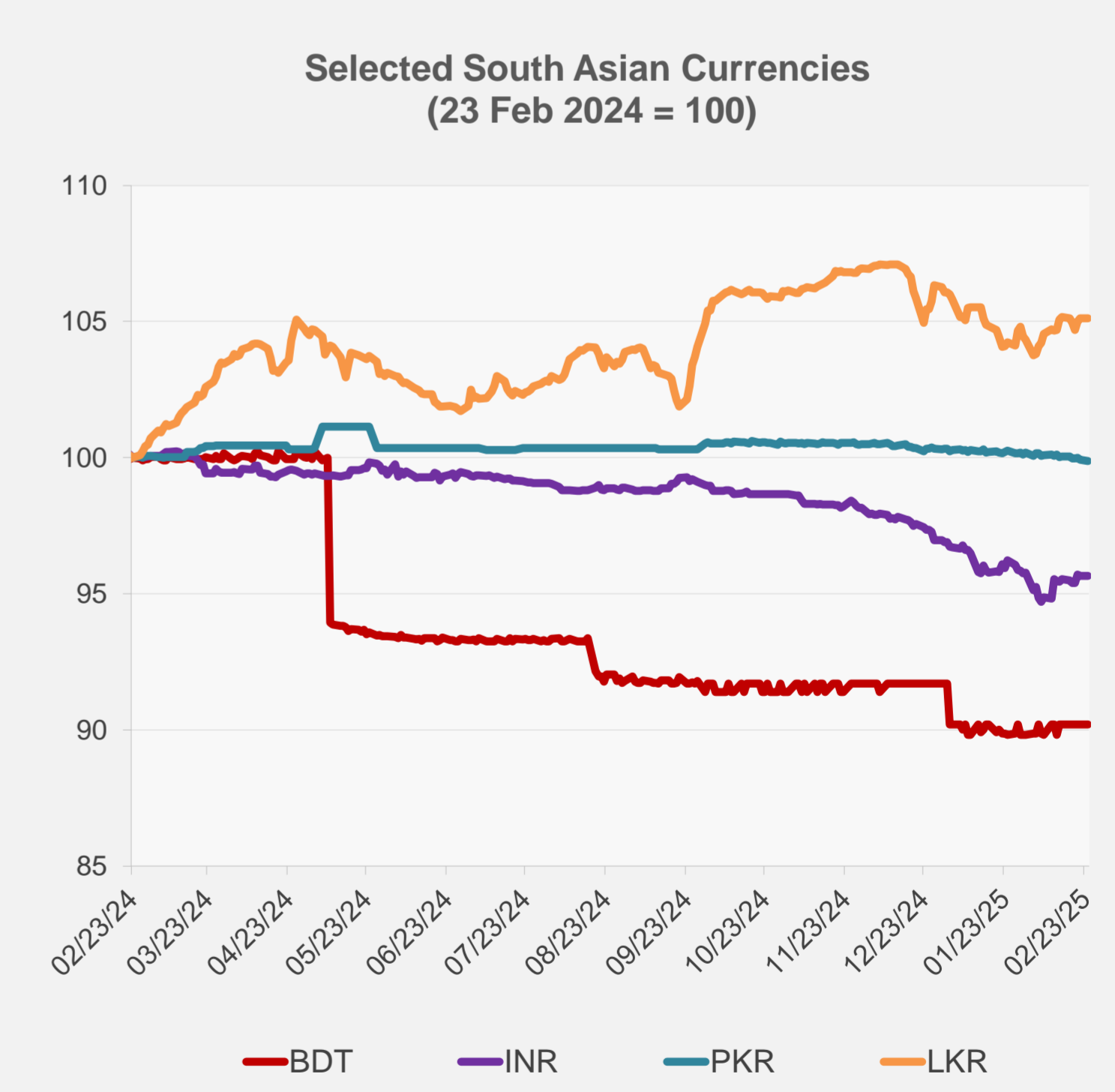
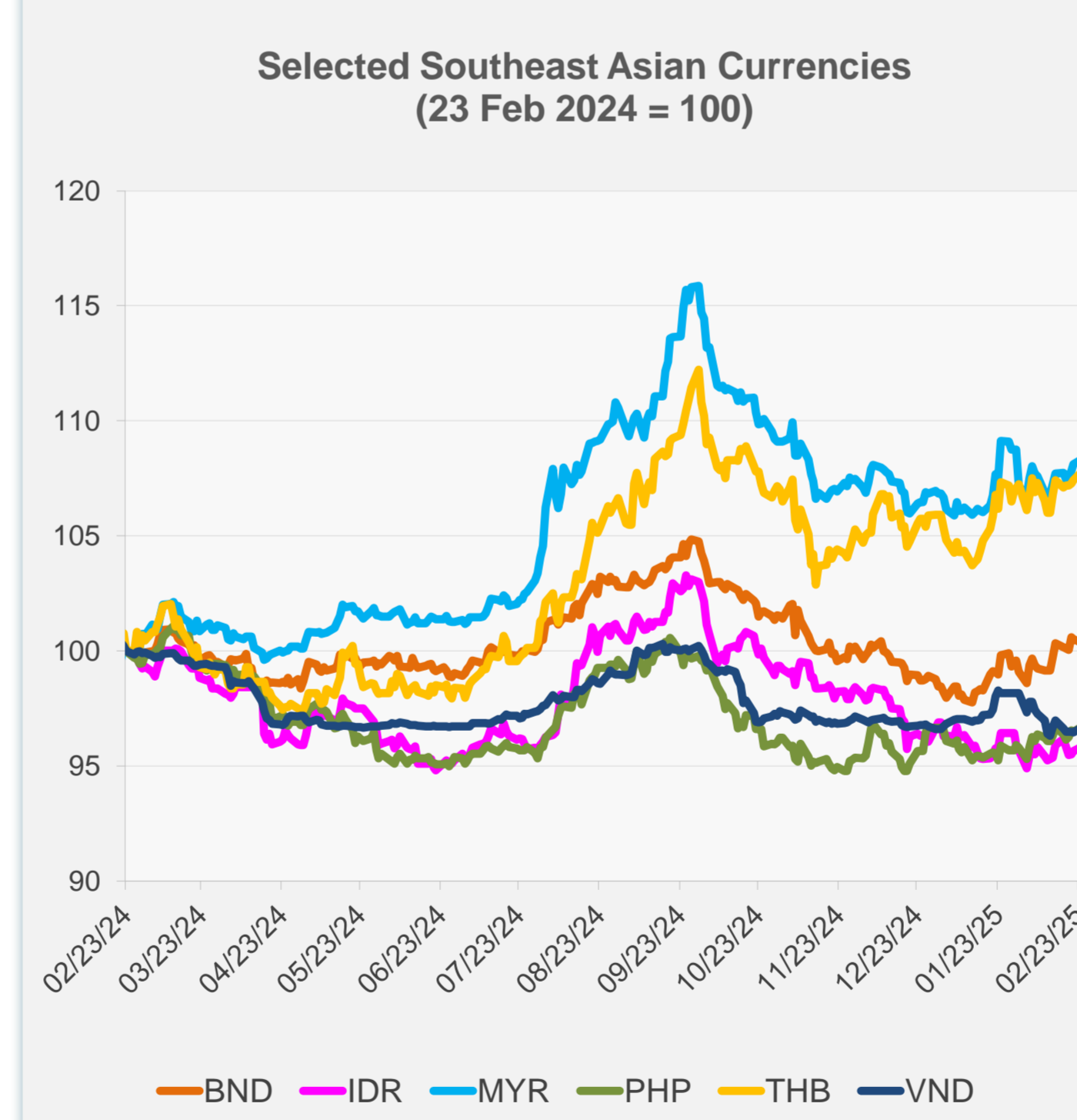


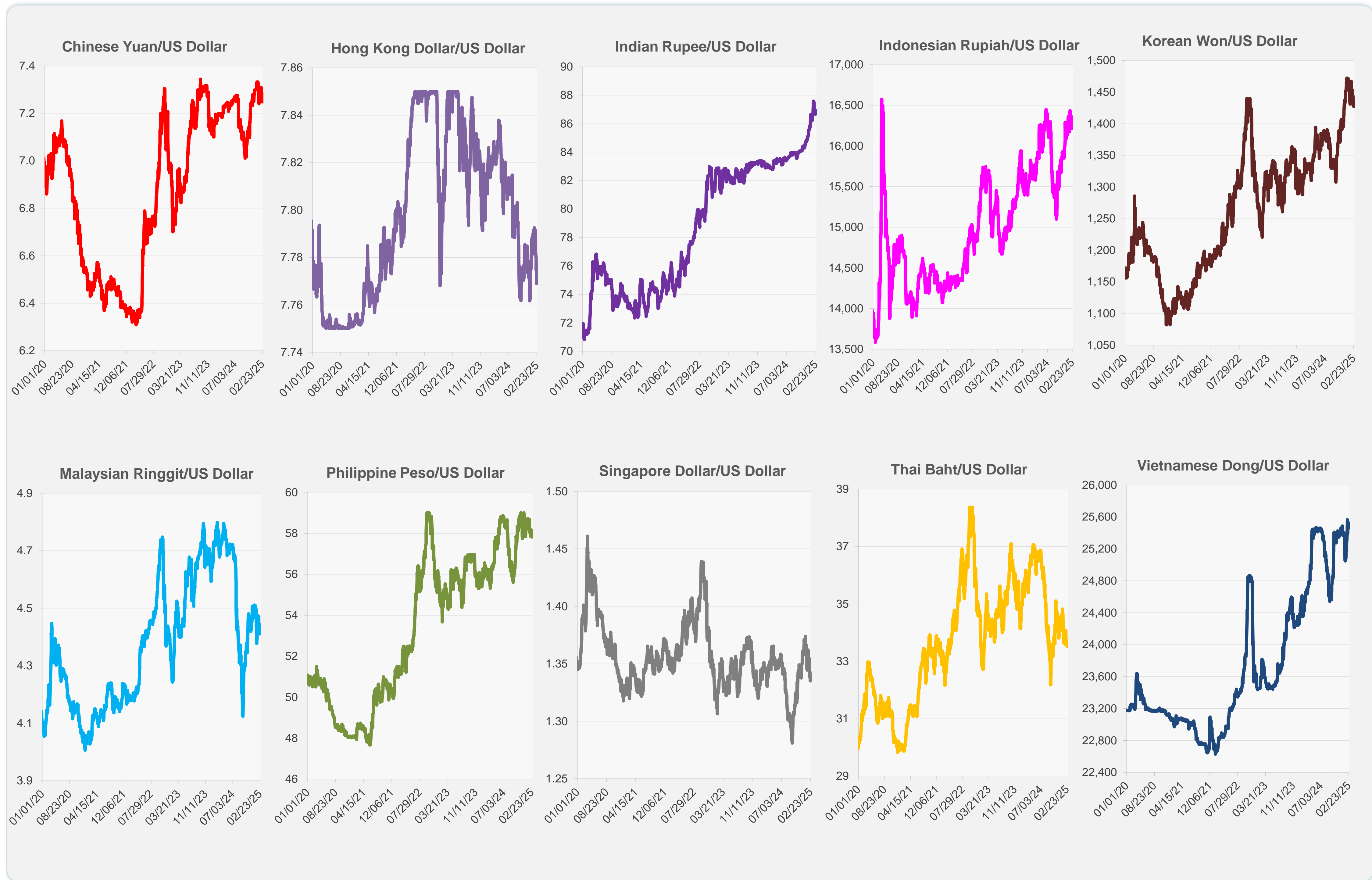
	Latest Closing	% change from Previous Day	% change from 01-Jan-25
Euro	0.96	0.14	1.10
Japanese yen (JPY)	149.30	0.17	5.26
Bangladeshi taka (BDT)	121.50	0.00	-1.65
Brunei dollar (BND)	1.34	-0.14	1.94
Chinese yuan (CNY)	7.25	0.08	0.71
Hong Kong dollar (HKD)	7.77	-0.06	-0.08
Indian rupee (INR)	86.71	0.00	-1.27
Indonesian rupiah (IDR)	16,275.00	0.18	-1.11
Korean won (KRW)	1,427.25	0.48	3.15
Malaysian ringgit (MYR)	4.41	0.18	1.38
Pakistan rupee (PKR)	279.65	-0.05	-0.46
Philippine peso (PHP)	57.82	0.23	0.04
Singapore dollar (SGD)	1.34	-0.14	1.94
Sri Lanka rupee (LKR)	295.63	0.01	-0.89
Taipei,China NT dollar (TWD)	32.75	0.00	0.11
Thai baht (THB)	33.51	0.32	1.75
Vietnamese dong (VND)	25,470.00	0.22	0.06



NIE = Newly Industrialized Economies



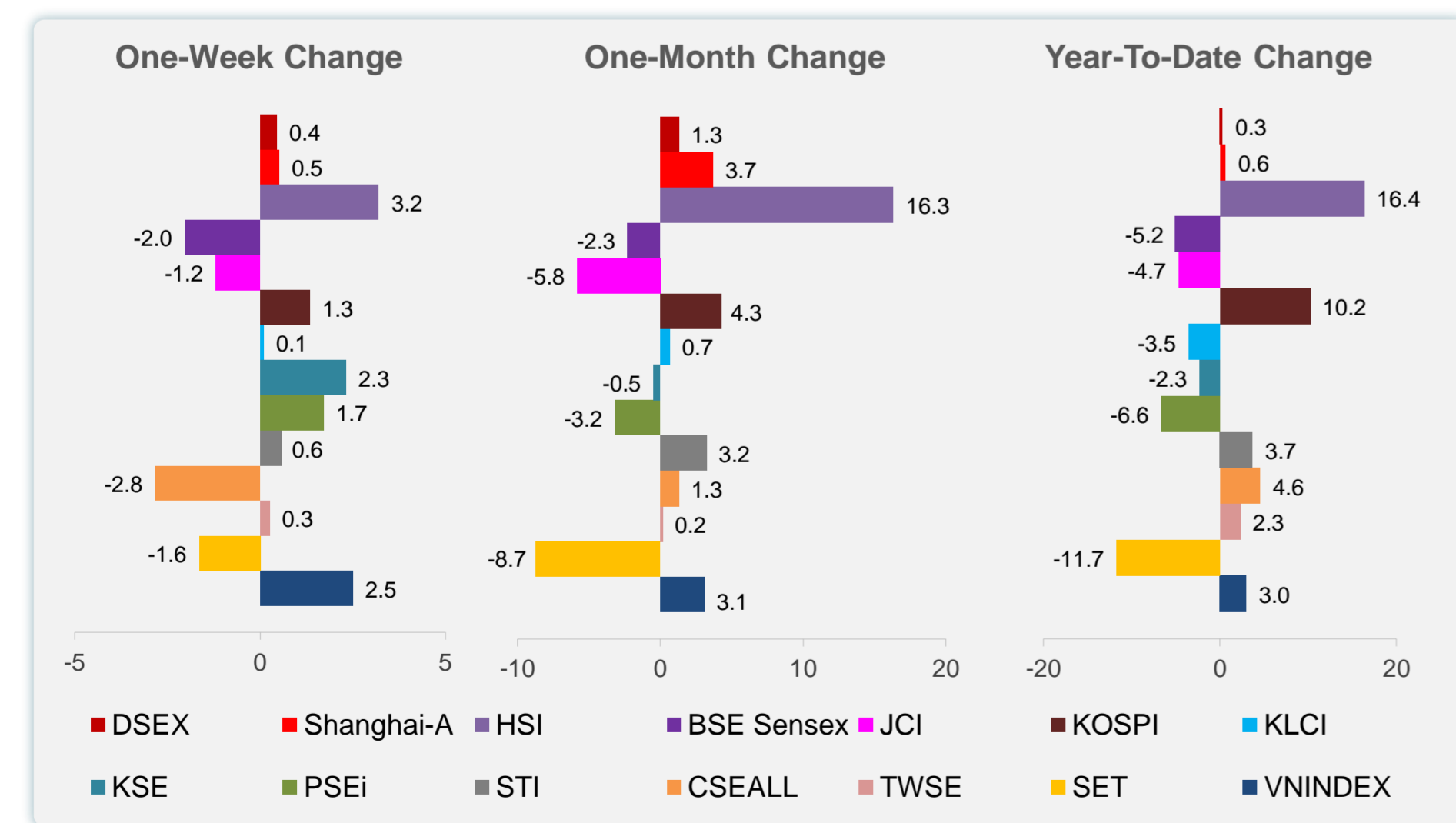
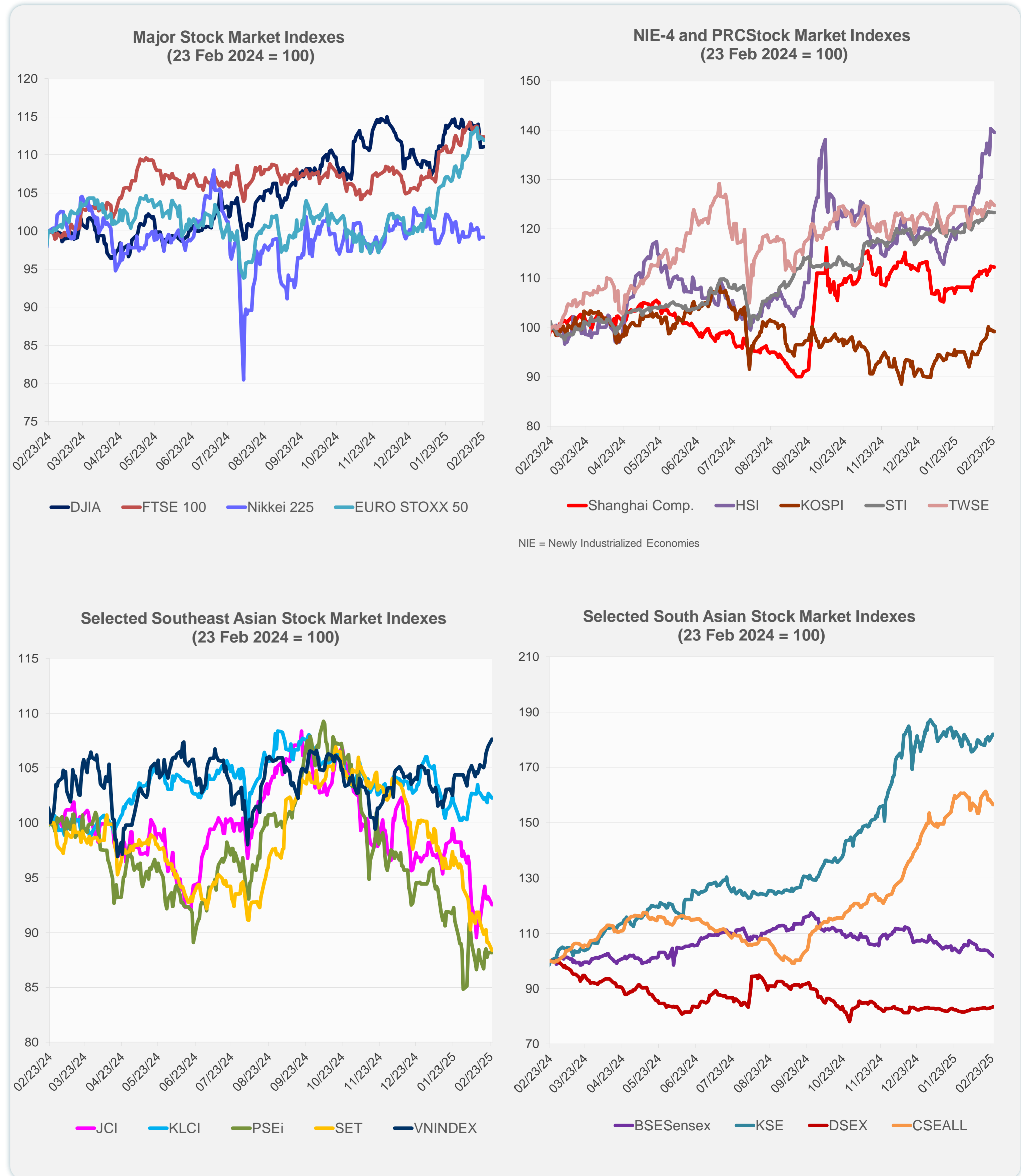
Note: Negative/Decreasing values indicate depreciation of local currency, and positive/increasing values indicate appreciation.  
Source: ADB calculations using data from Haver Analytics.



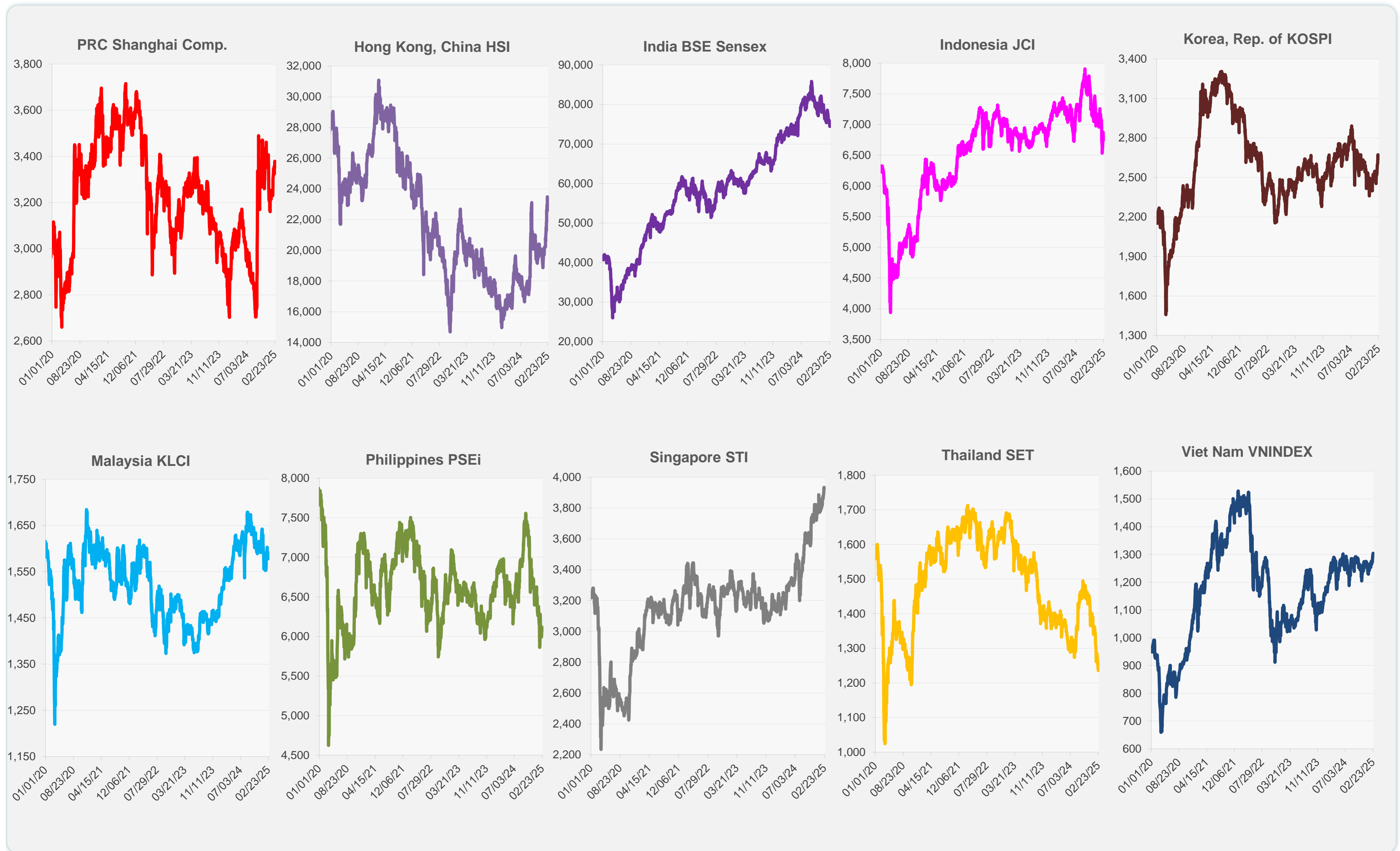
Source: Haver Analytics.

Daily Market Watch  
**STOCK INDEXES**

	Latest Closing	% change from Previous Day	% change from 01-Jan-25
US Dow Jones Ind Avg	43,461.21	0.08	2.16
US NASDAQ	19,286.93	-1.21	-0.12
US S&P 500	5,983.25	-0.50	1.73
UK FTSE 100	8,658.98	0.00	5.95
EURO STOXX 50	5,453.76	-0.39	11.39
Japan NIKKEI 225	38,776.94	0.00	-2.80
Bangladesh DSEX	5,234.95	0.66	0.32
PRC Shanghai Comp.	3,373.03	-0.18	0.63
Hong Kong, China HSI	23,341.61	-0.58	16.36
India BSE Sensex	74,454.41	-1.14	-5.16
Indonesia JCI	6,749.60	-0.78	-4.67
Korea, Rep. of KOSPI	2,645.27	-0.35	10.24
Malaysia KLCI	1,584.25	-0.43	-3.54
Pakistan KSE 100	114,330.10	1.36	-2.29
Philippines PSEi	6,095.97	-0.03	-6.63
Singapore STI	3,927.75	-0.06	3.70
Sri Lanka CSEALL	16,671.73	-1.29	4.56
Taipei, China TWSE	23,565.31	-0.70	2.30
Thailand SET	1,235.85	-0.83	-11.74
Viet Nam VNINDEX	1,304.56	0.60	2.98



Sources: ADB calculations using data from CEIC Data Company and Haver Analytics.



Sources: CEIC Data Company and Haver Analytics.

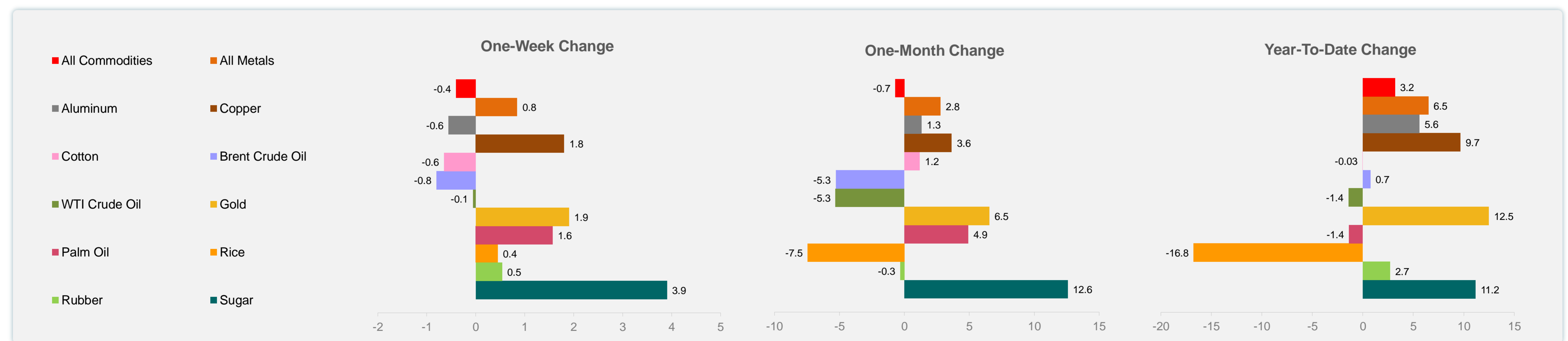
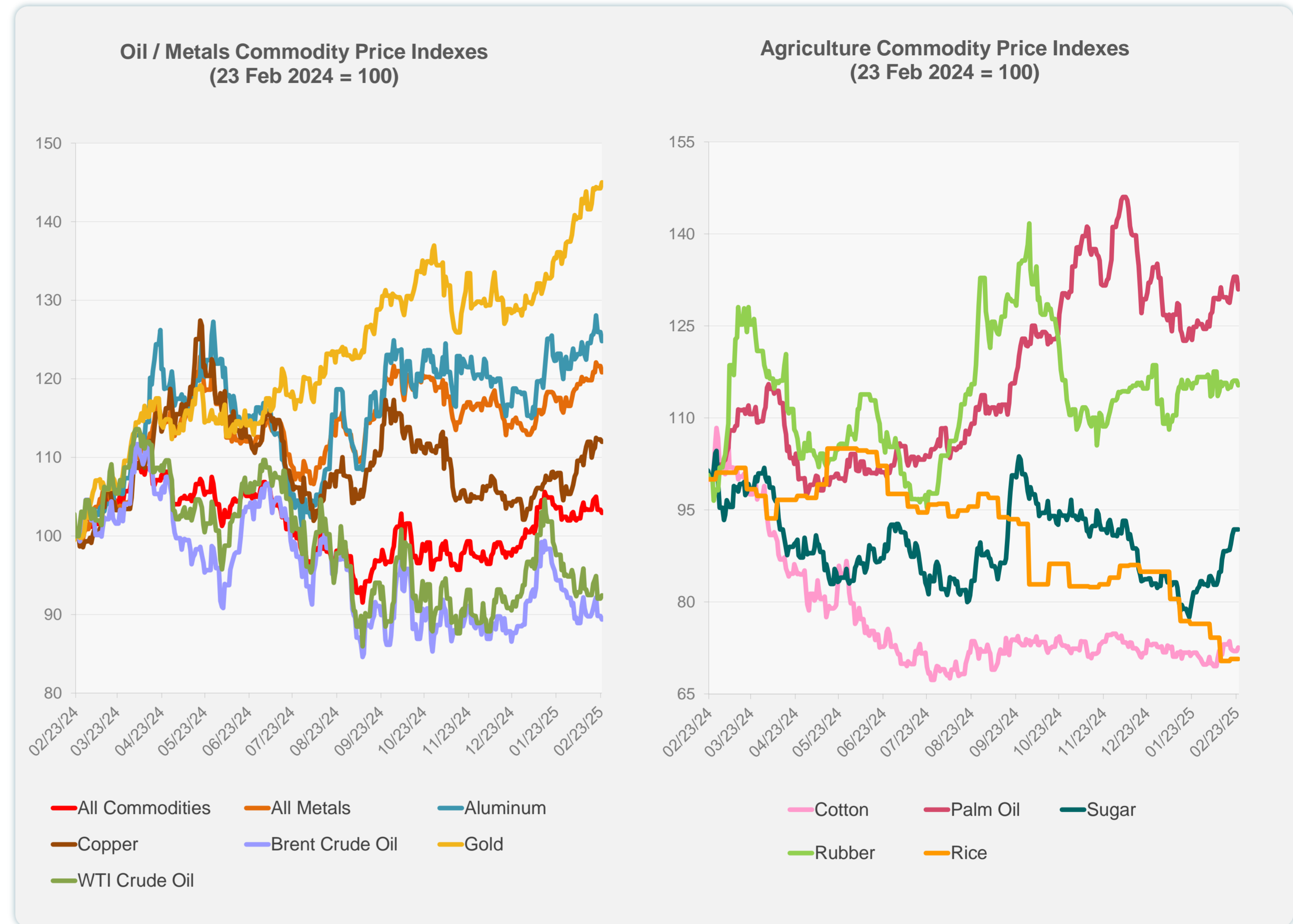
Daily Market Watch  
**COMMODITY PRICES**

25 February 2025, 9:00 AM Manila

	Unit	Latest Closing	% change from Previous Day	% change from 01-Jan-25
S&P All Commodities	US\$	567.12	-0.40	3.18
S&P All Metals	US\$	327.34	-0.66	6.49
Aluminum	US\$/metric ton	2,668.44	-0.92	5.61
Copper	US\$/metric ton	9,489.49	-0.31	9.67
Cotton	US cents/lb	65.88	0.83	-0.03
Brent Crude Oil	US\$/barrel	74.66	-0.49	0.75
WTI Crude Oil	US\$/barrel	70.70	0.43	-1.42
Gold	US\$/troy oz	2,951.73	0.53	12.47
Palm Oil	US\$/metric tonne	1,085.05	-1.52	-1.37
Rice <sup>1</sup>	US\$/metric ton	447.00	0.00	-16.76
Rubber <sup>2</sup>	US\$/kg	243.20	-0.65	2.70
Sugar	US cents/lb	20.23	0.00	11.15

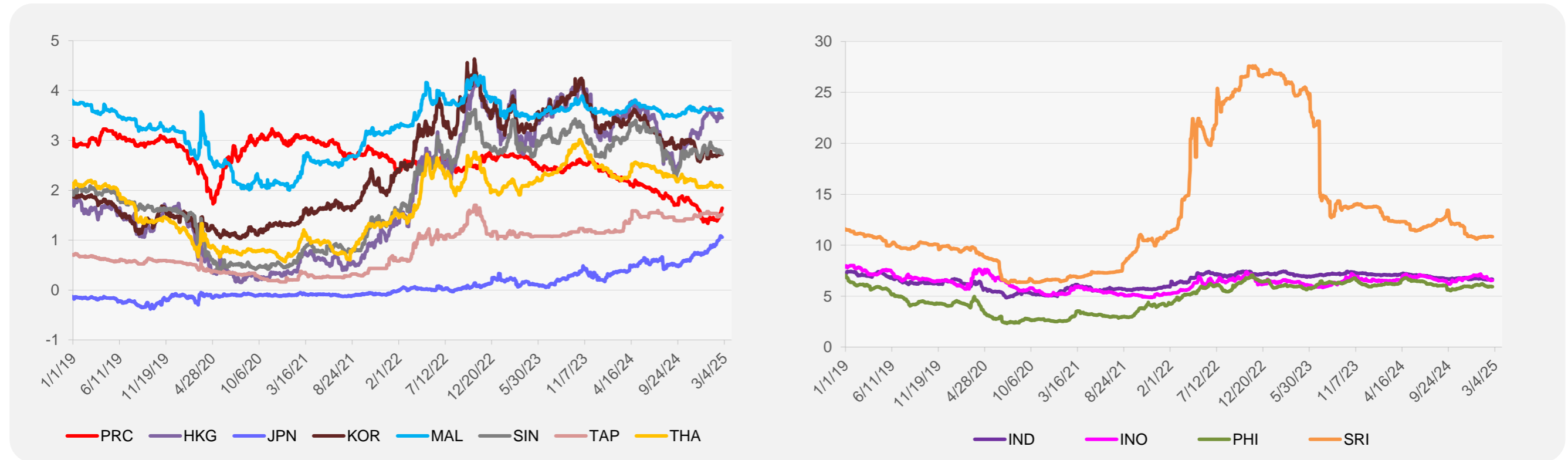
<sup>1</sup> Latest closing price from 19 February 2025.

<sup>2</sup> Singapore Exchange, Ribbed Smoked Sheet Rubber.

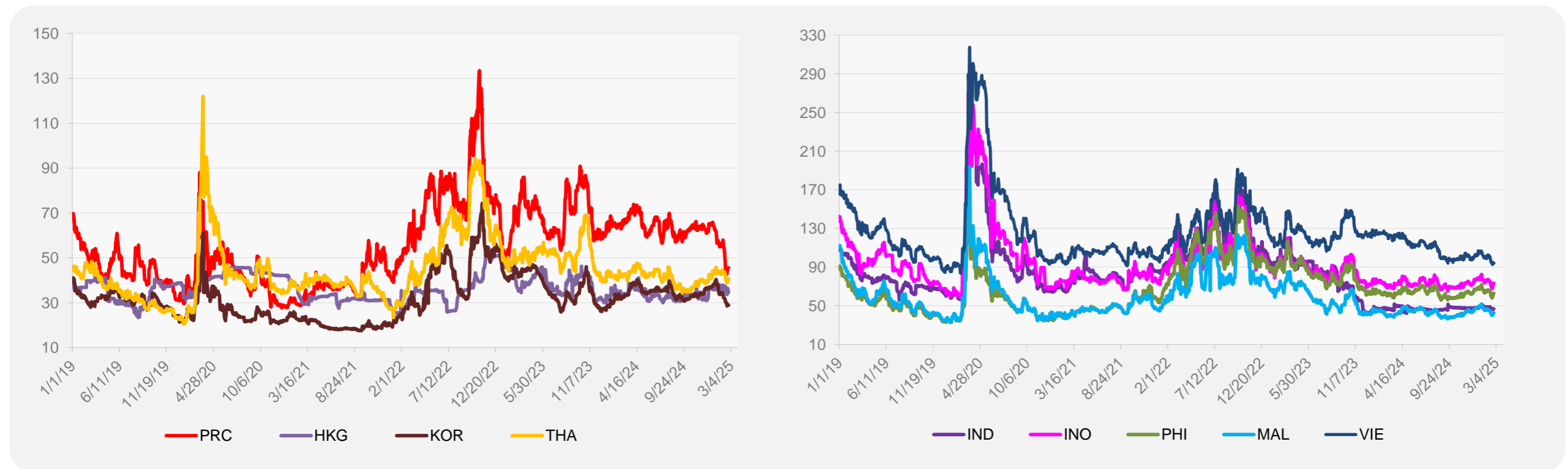


Source: ADB calculations using data from Bloomberg.

### 5-YEAR LOCAL CURRENCY GOVERNMENT BOND YIELDS (%)



### 5-YEAR CREDIT DEFAULT SWAP<sup>1</sup>



<sup>1</sup> In USD and based on sovereign bonds.  
Source: ADB calculations using data from Bloomberg.