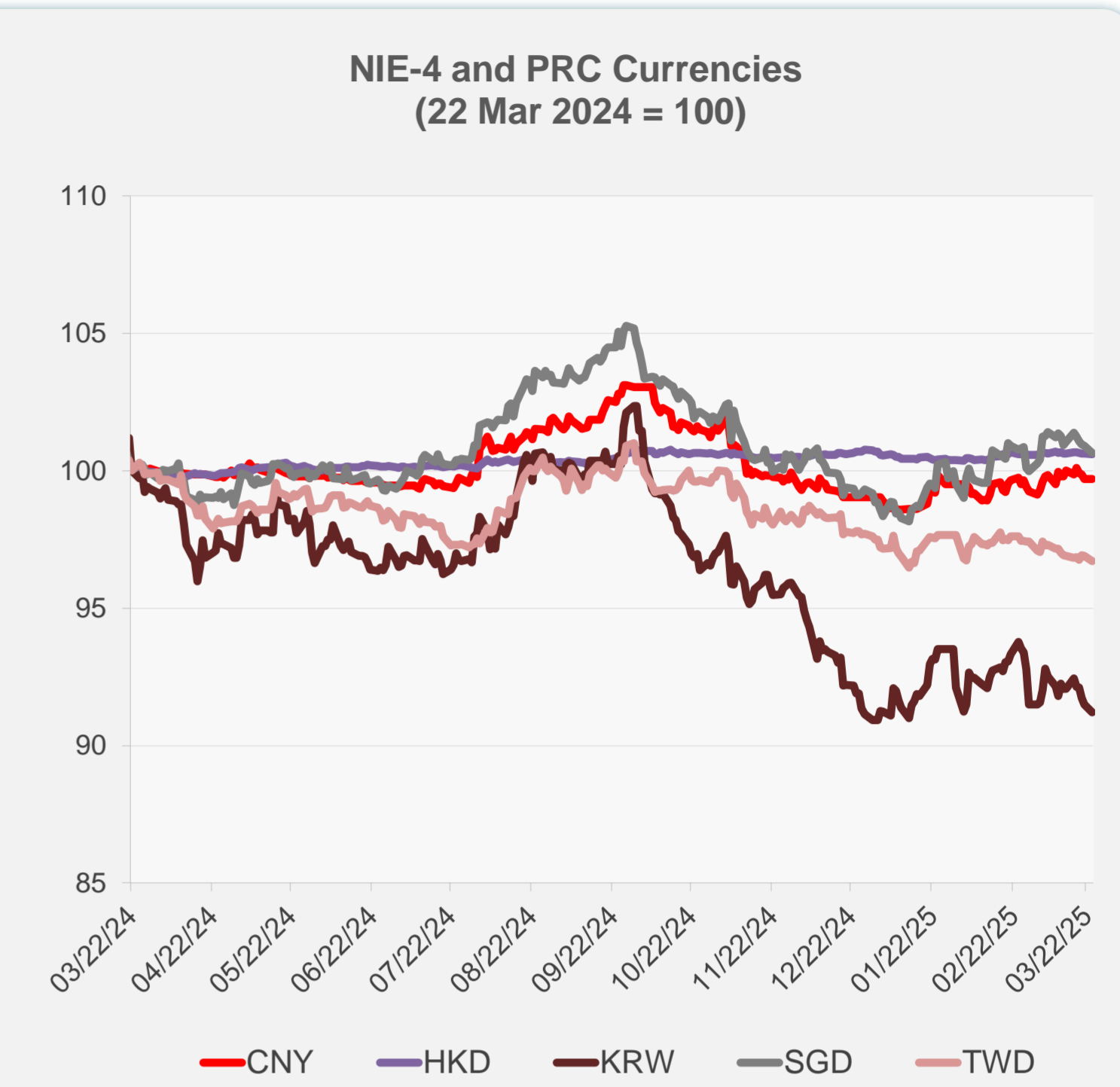


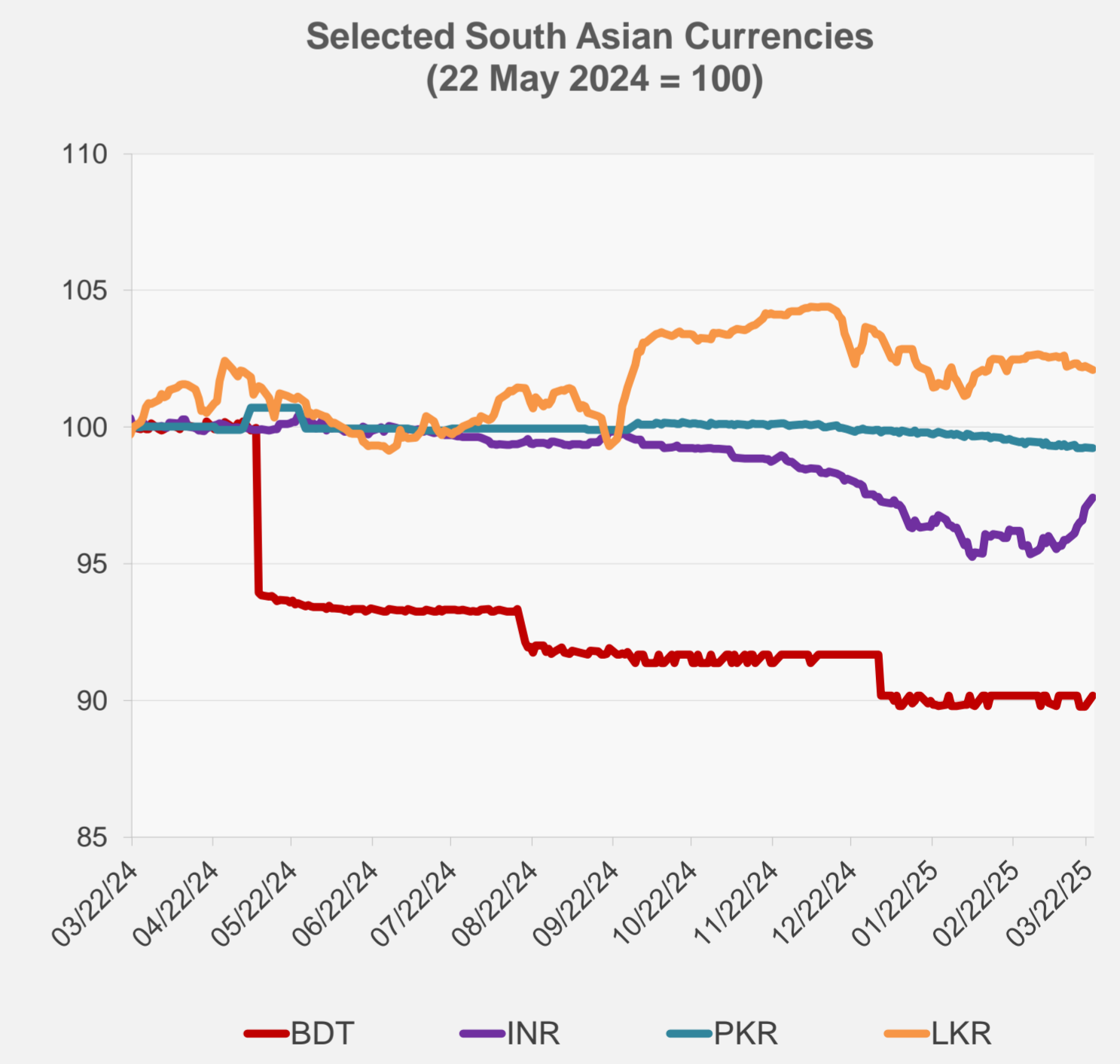
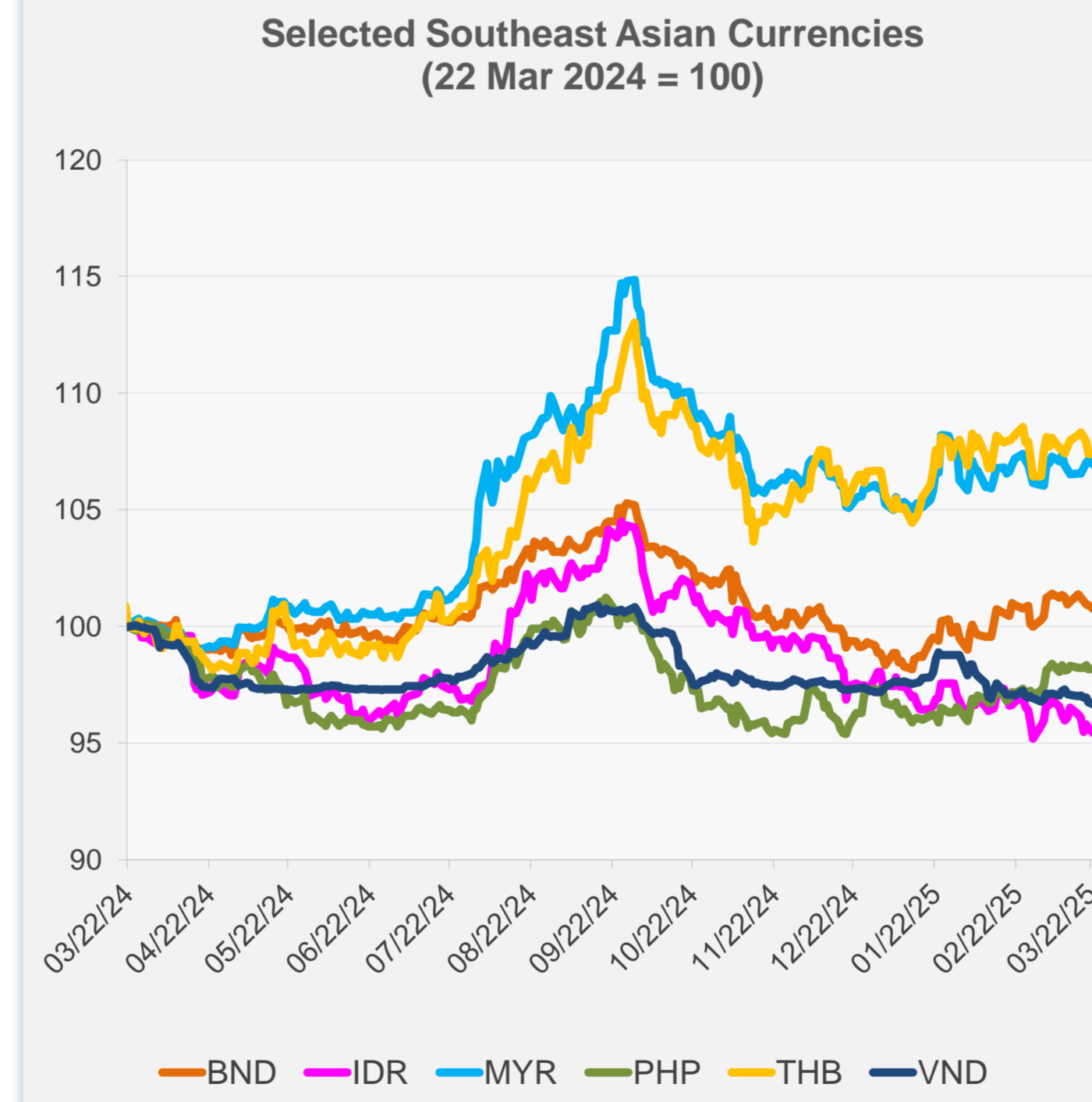
	Latest Closing	% change from Previous Day	% change from 01-Jan-25
Euro	0.93	-0.13	4.24
Japanese yen (JPY)	150.75	-1.16	4.26
Bangladeshi taka (BDT)	121.50	0.45	-1.65
Brunei dollar (BND)	1.34	-0.27	1.81
Chinese yuan (CNY)	7.25	-0.02	0.66
Hong Kong dollar (HKD)	7.77	-0.01	-0.08
Indian rupee (INR)	85.64	0.40	-0.03
Indonesian rupiah (IDR)	16,555.00	-0.33	-2.78
Korean won (KRW)	1,467.55	-0.31	0.31
Malaysian ringgit (MYR)	4.43	-0.29	0.85
Pakistan rupee (PKR)	280.30	-0.04	-0.69
Philippine peso (PHP)	57.32	0.03	0.92
Singapore dollar (SGD)	1.34	-0.27	1.81
Sri Lanka rupee (LKR)	296.73	-0.13	-1.26
Taipei,China NT dollar (TWD)	33.05	-0.19	-0.80
Thai baht (THB)	33.87	0.02	0.68
Vietnamese dong (VND)	25,640.00	-0.14	-0.60



Legend: Euro (Green), JPY (Blue)

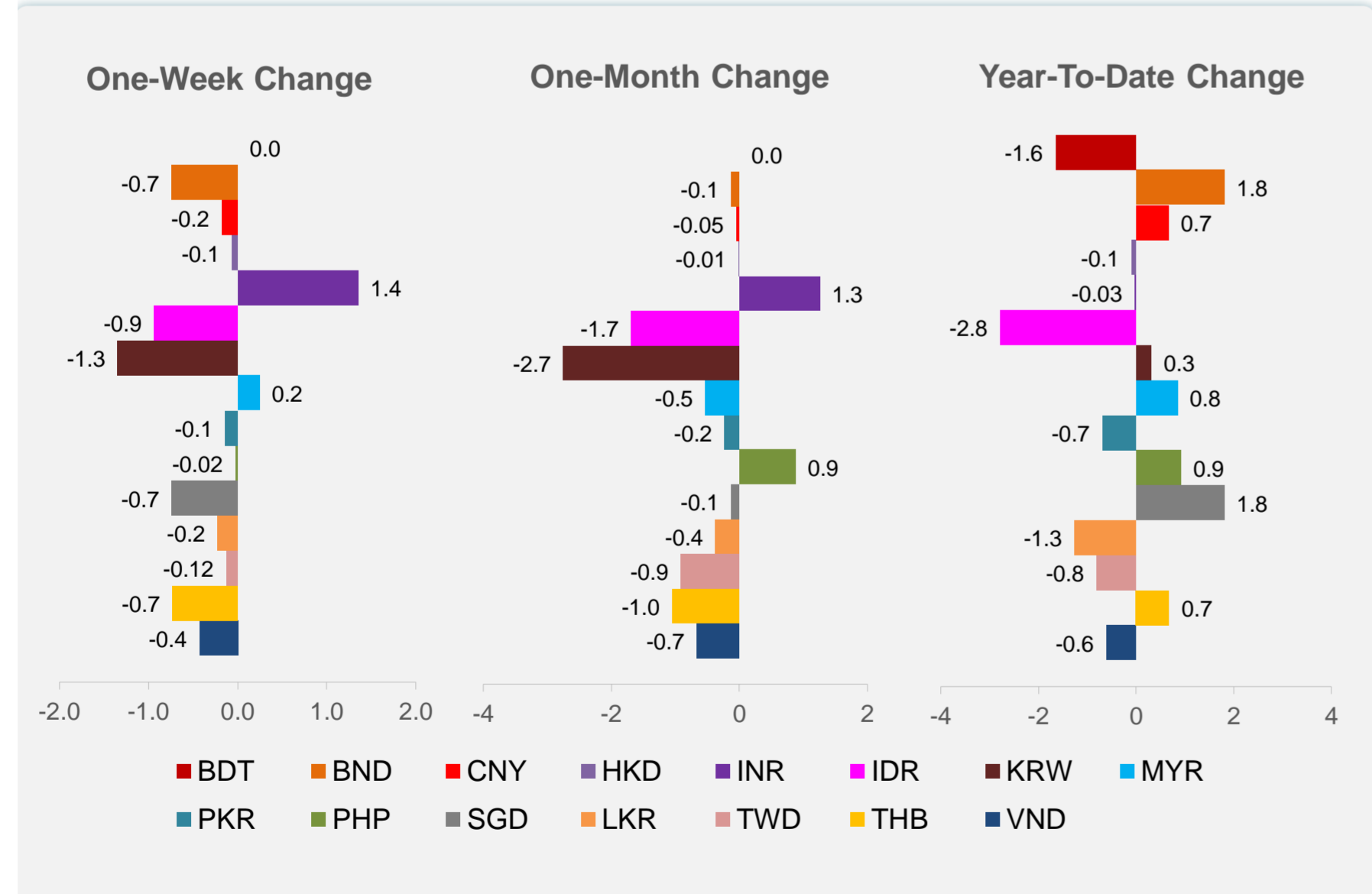
Legend: CNY (Red), HKD (Purple), KRW (Brown), SGD (Grey), TWD (Pink)

NIE = Newly Industrialized Economies

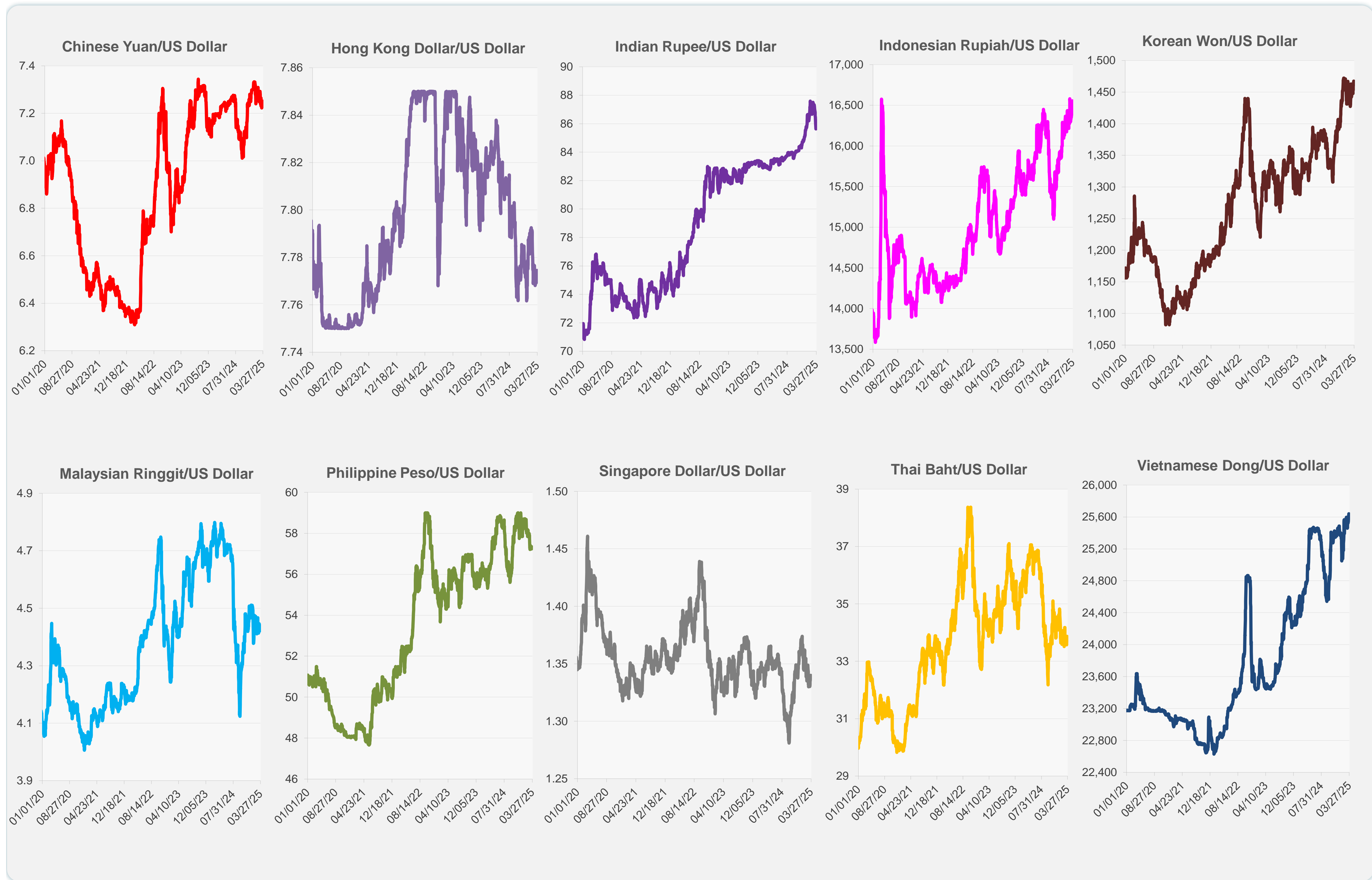


Legend: BND (Orange), IDR (Magenta), MYR (Cyan), PHP (Green), THB (Yellow), VND (Dark Blue)

Legend: BDT (Red), INR (Purple), PKR (Teal), LKR (Orange)



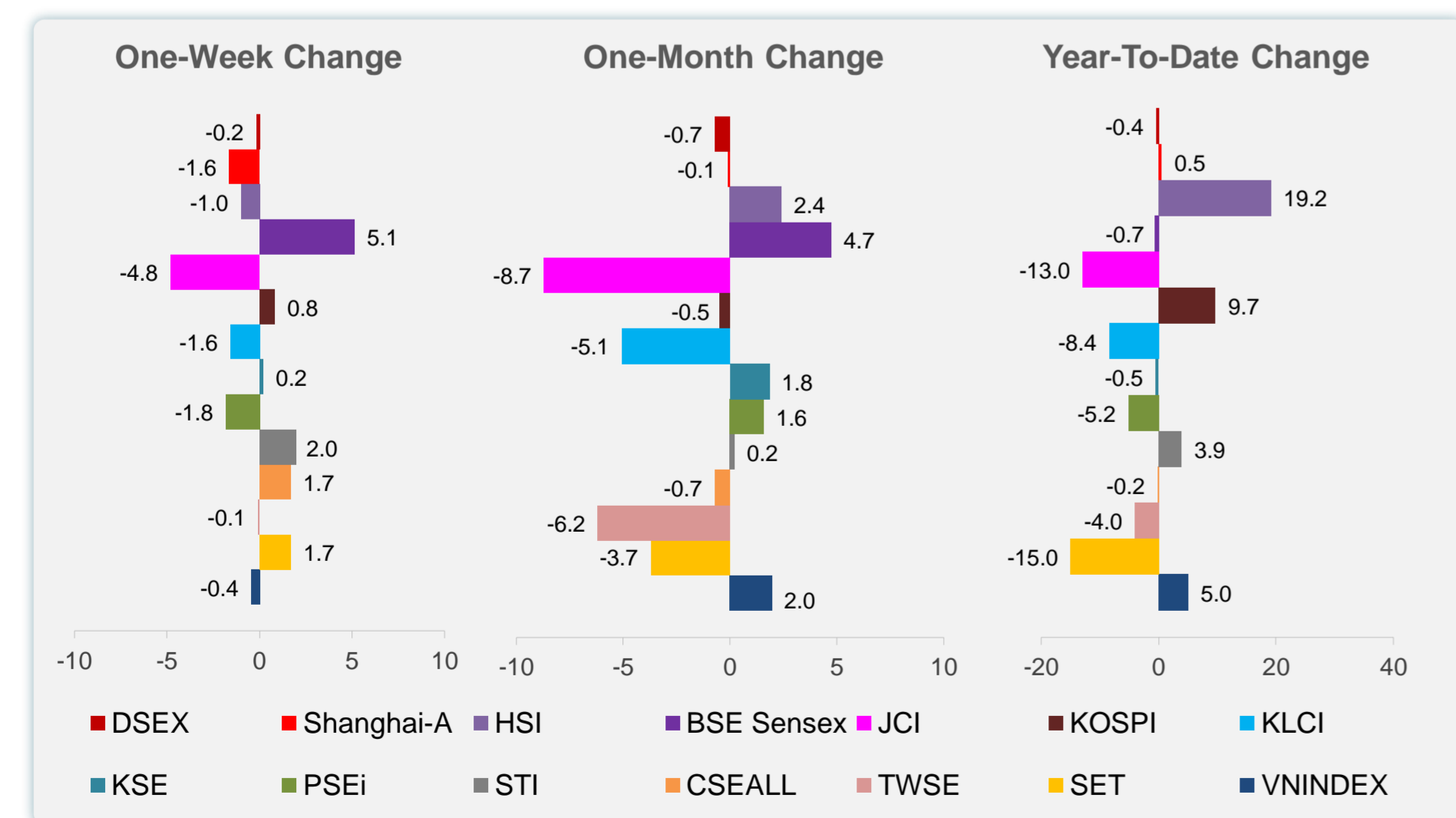
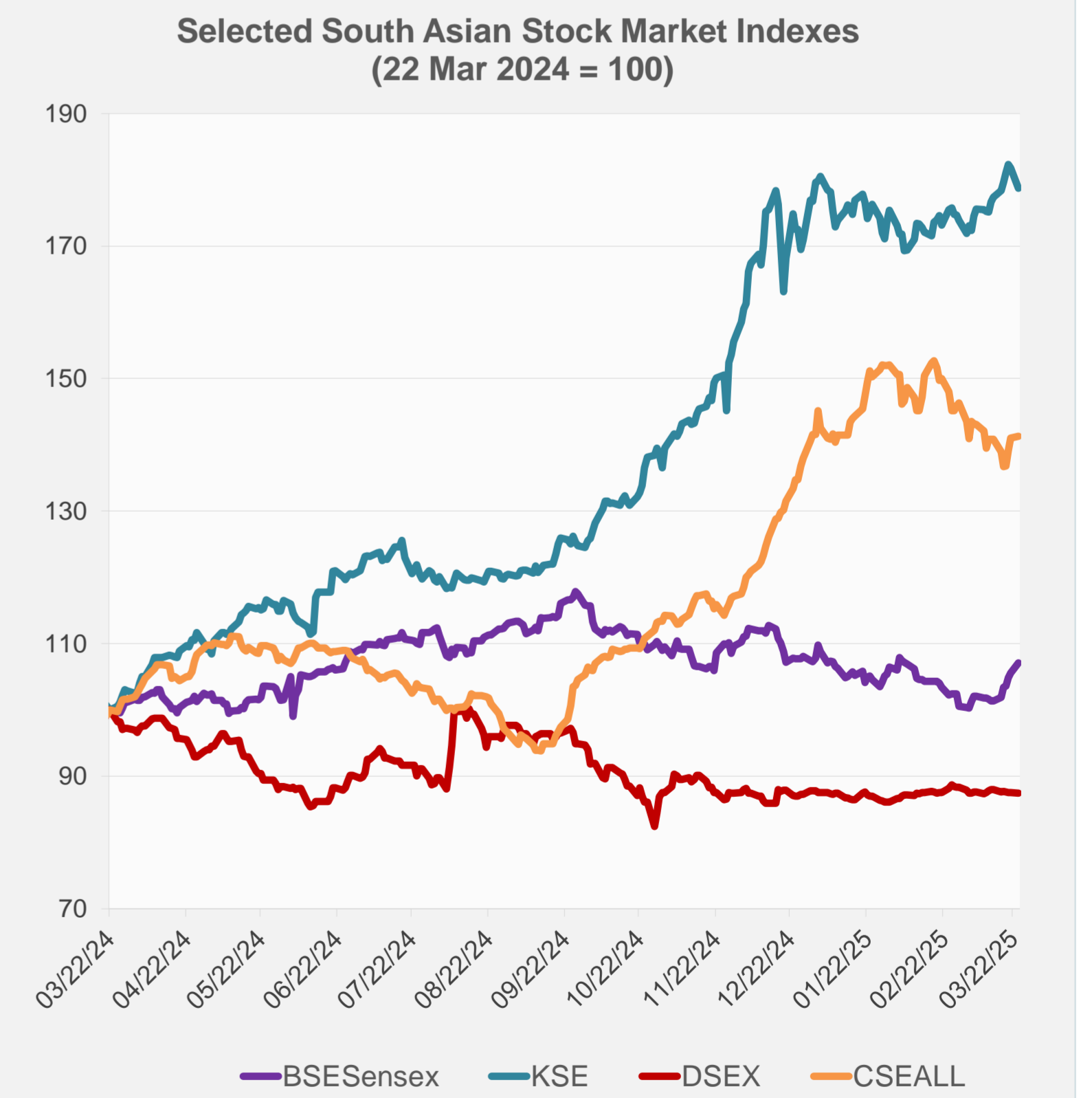
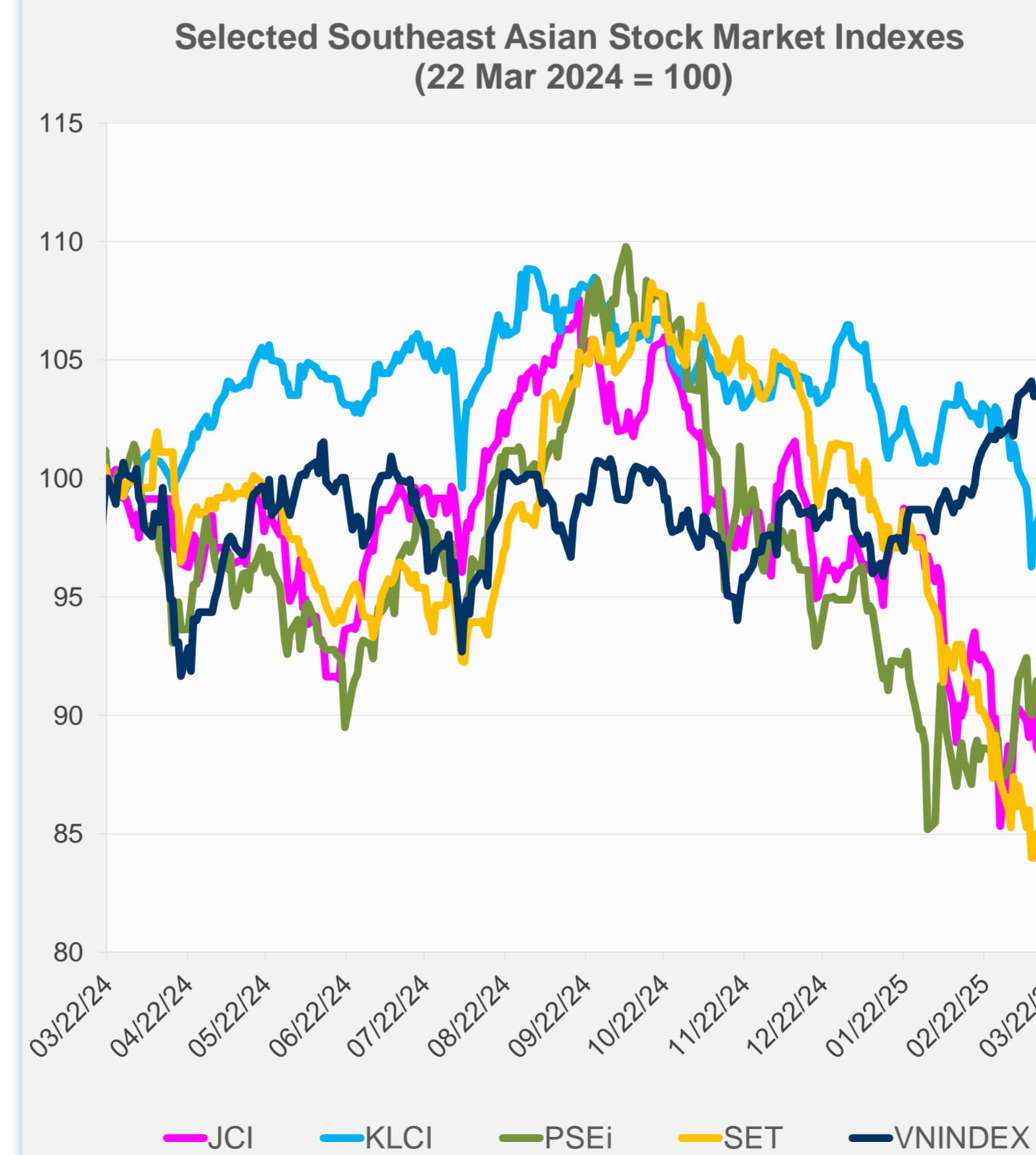
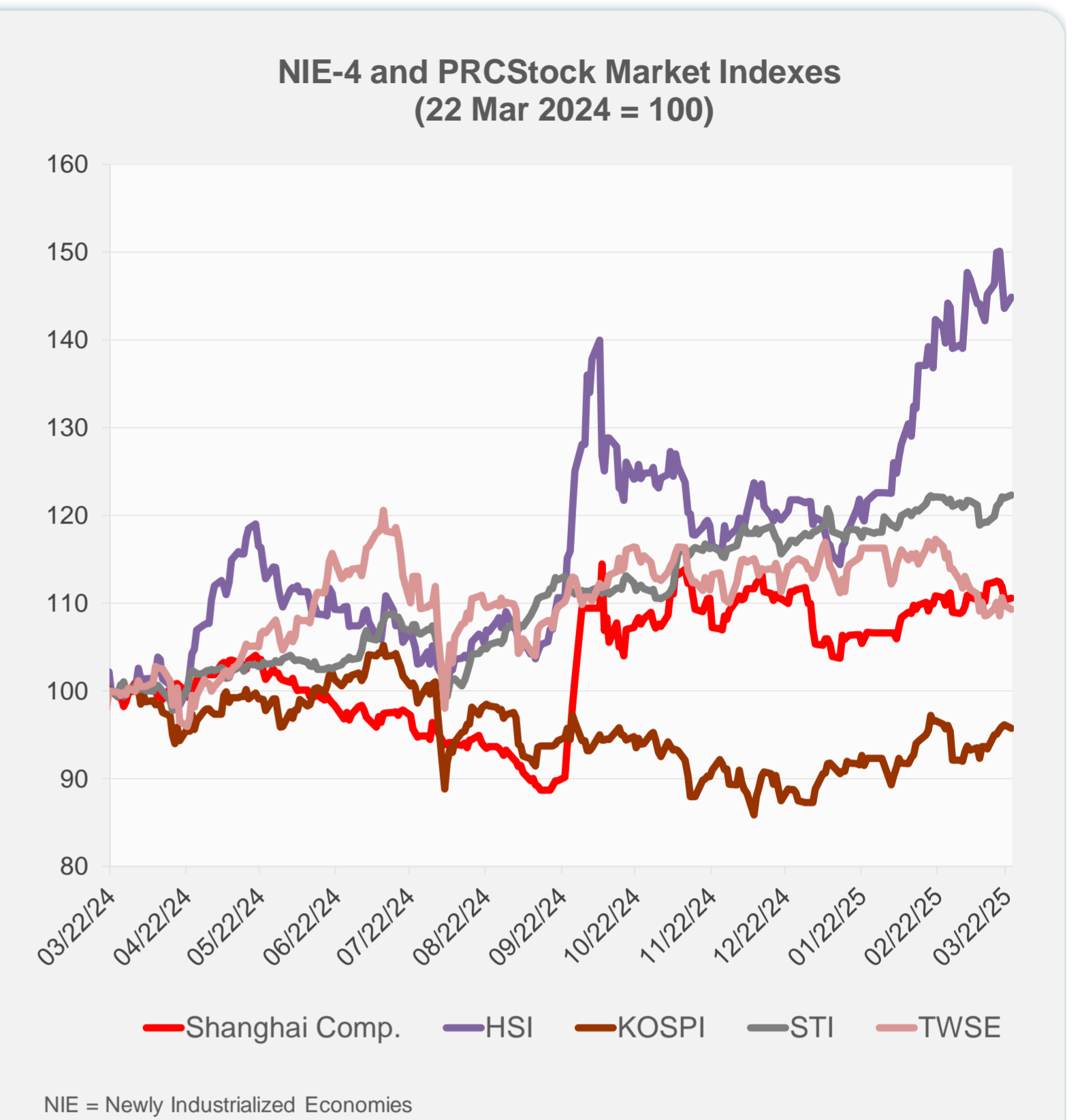
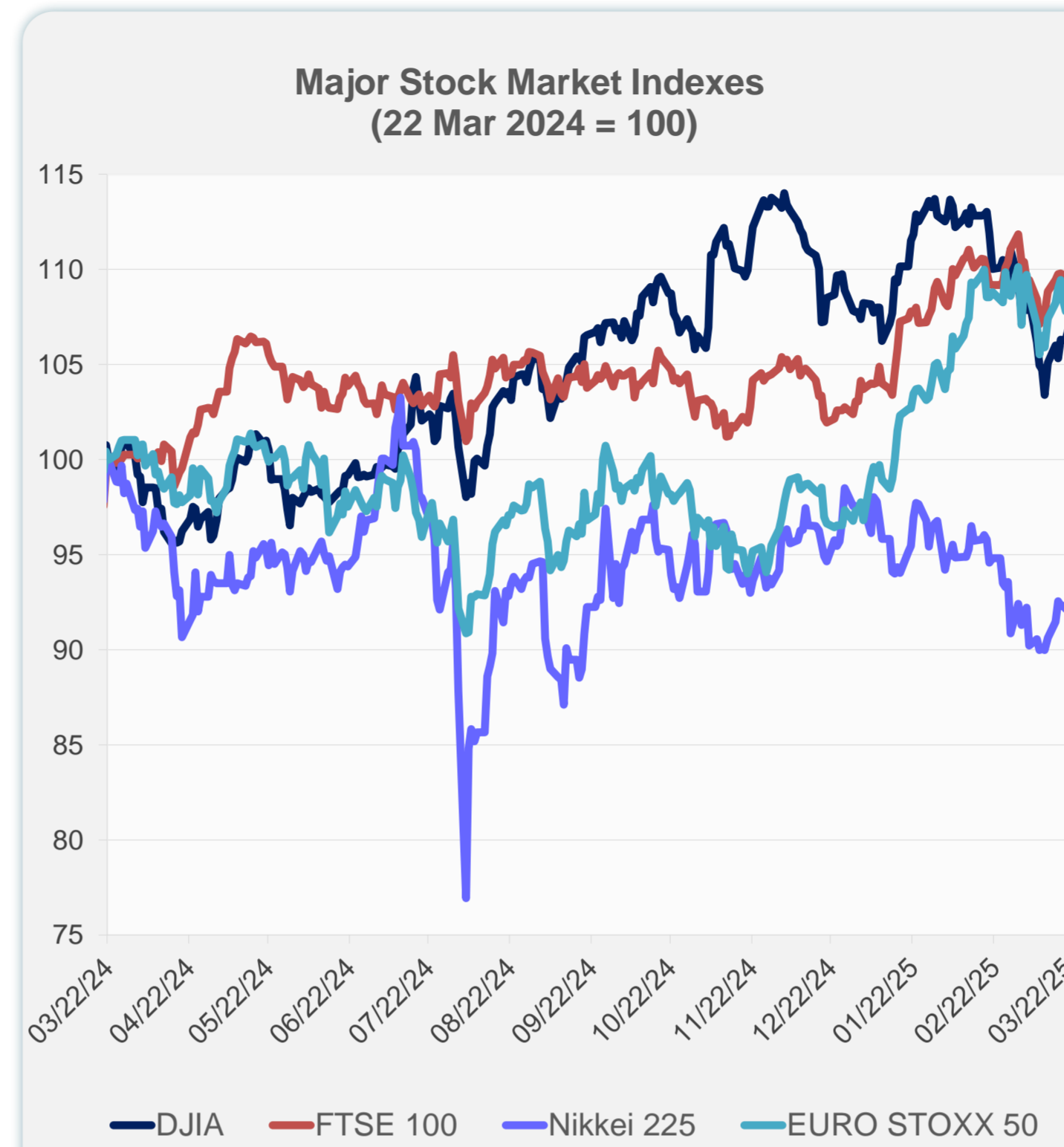
Note: Negative/Decreasing values indicate depreciation of local currency, and positive/increasing values indicate appreciation.
Source: ADB calculations using data from Haver Analytics.



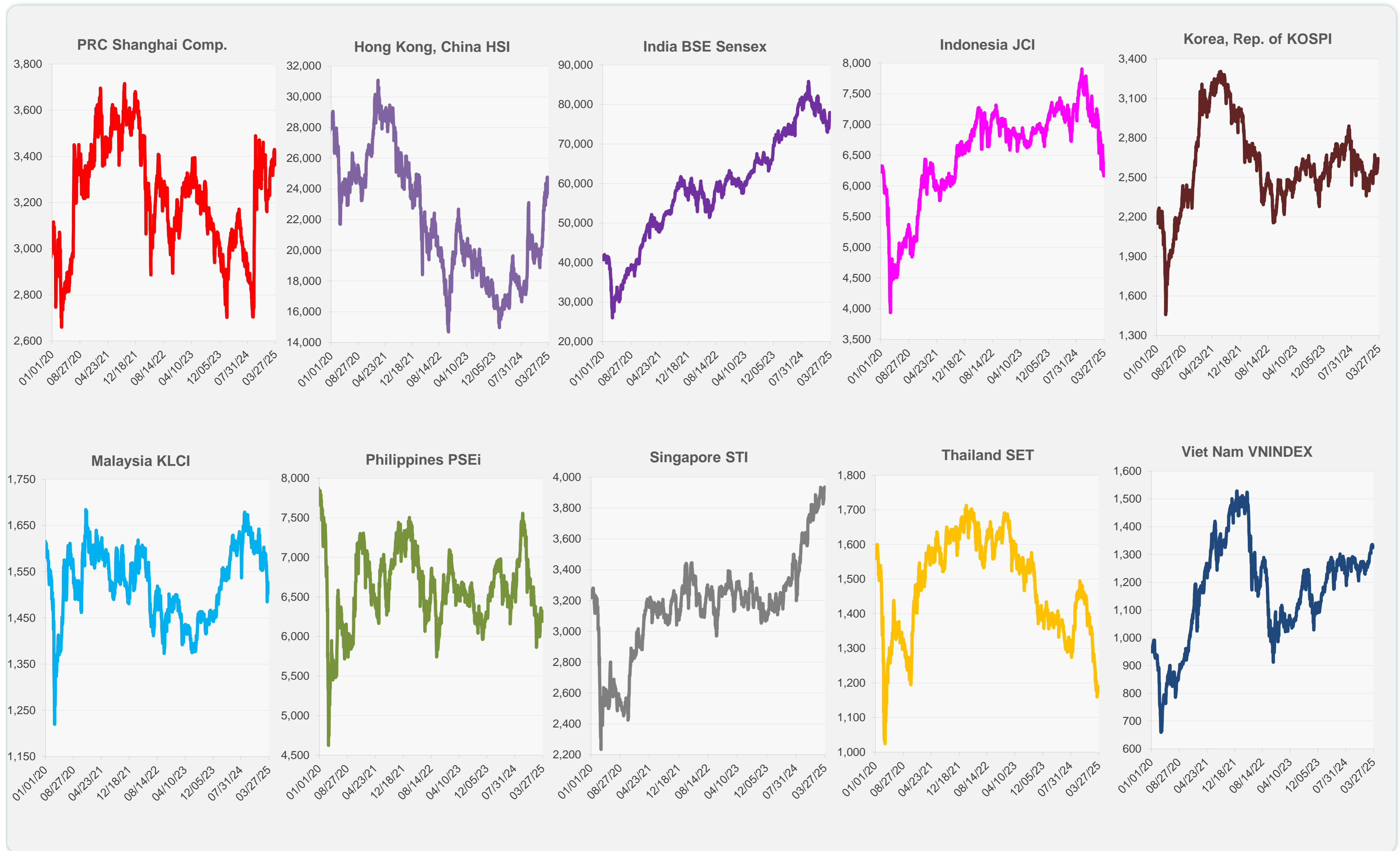
Source: Haver Analytics.

Daily Market Watch
STOCK INDEXES

	Latest Closing	% change from Previous Day	% change from 01-Jan-25
US Dow Jones Ind Avg	42,583.32	1.42	0.09
US NASDAQ	18,188.59	2.27	-5.81
US S&P 500	5,767.57	1.76	-1.94
UK FTSE 100	8,638.01	-0.10	5.69
EURO STOXX 50	5,415.79	-0.15	10.62
Japan NIKKEI 225	37,608.49	-0.18	-5.73
Bangladesh DSEX	5,196.89	-0.09	-0.41
PRC Shanghai Comp.	3,370.03	0.15	0.55
Hong Kong, China HSI	23,905.56	0.91	19.17
India BSE Sensex	77,984.38	1.40	-0.67
Indonesia JCI	6,161.22	-1.55	-12.98
Korea, Rep. of KOSPI	2,632.07	-0.42	9.69
Malaysia KLCI	1,503.82	-0.11	-8.43
Pakistan KSE 100	116,439.62	-1.69	-0.49
Philippines PSEi	6,192.02	-1.19	-5.16
Singapore STI	3,936.33	0.25	3.93
Sri Lanka CSEALL	15,912.61	0.21	-0.20
Taipei, China TWSE	22,106.64	-0.46	-4.03
Thailand SET	1,190.06	0.29	-15.01
Viet Nam VNINDEX	1,330.32	0.41	5.02



Sources: ADB calculations using data from CEIC Data Company and Haver Analytics.



Sources: CEIC Data Company and Haver Analytics.

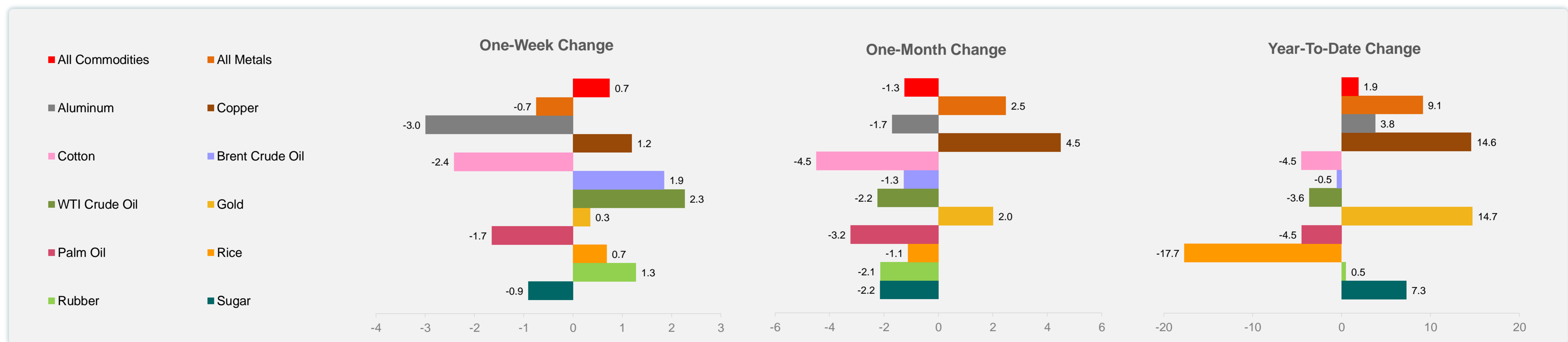
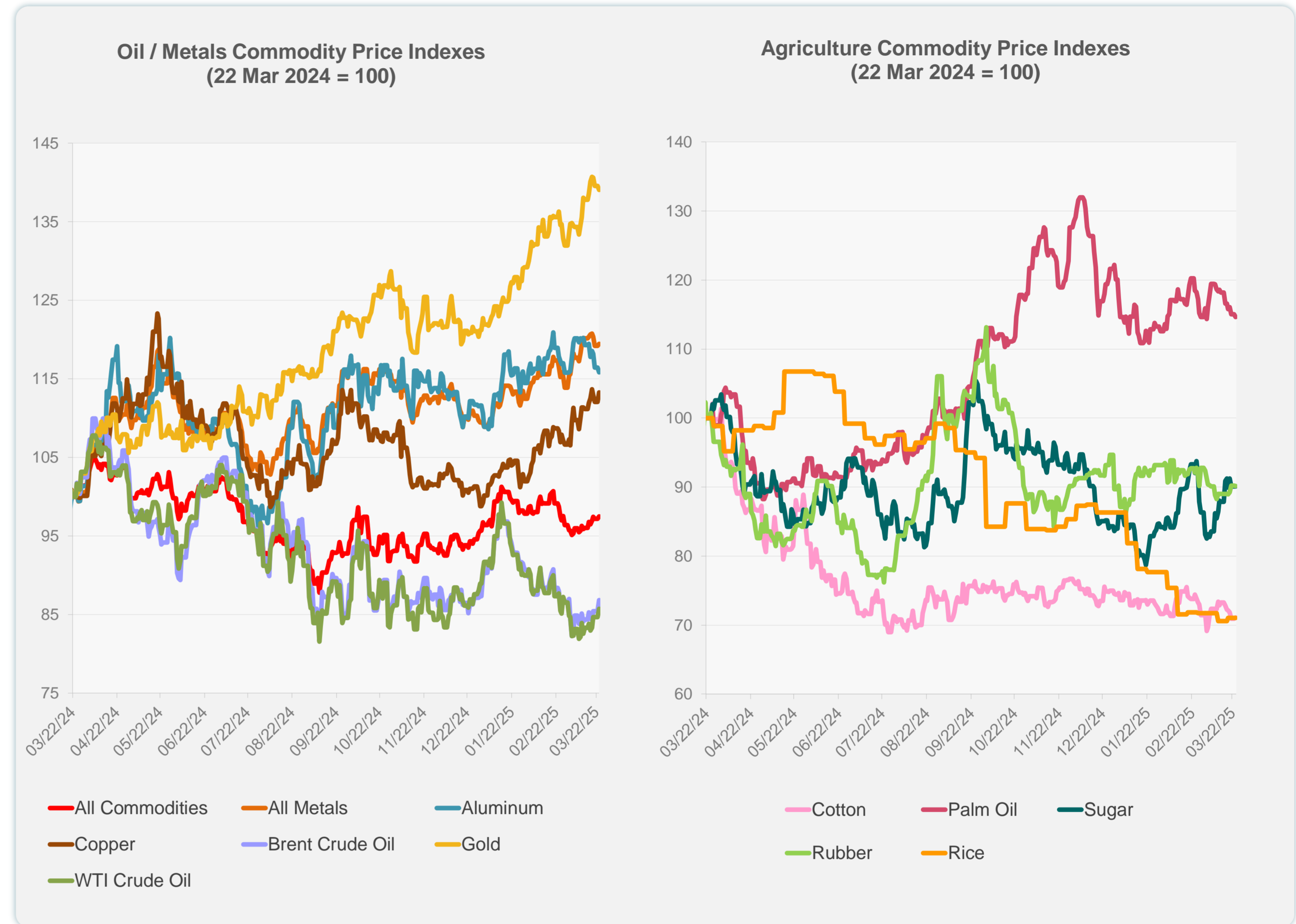
Daily Market Watch
COMMODITY PRICES

25 March 2025, 9:00 AM Manila

	Unit	Latest Closing	% change from Previous Day	% change from 01-Jan-25
S&P All Commodities	US\$	560.02	0.32	1.89
S&P All Metals	US\$	335.45	0.19	9.13
Aluminum	US\$/metric ton	2,622.89	-0.50	3.80
Copper	US\$/metric ton	9,916.45	1.05	14.61
Cotton	US cents/lb	62.92	0.24	-4.52
Brent Crude Oil	US\$/barrel	73.71	1.65	-0.53
WTI Crude Oil	US\$/barrel	69.11	1.22	-3.64
Gold	US\$/troy oz	3,011.04	-0.37	14.73
Palm Oil	US\$/metric tonne	1,050.61	-0.34	-4.50
Rice ¹	US\$/metric ton	442.00	0.00	-17.69
Rubber ²	US\$/kg	238.00	-0.04	0.51
Sugar	US cents/lb	19.53	0.00	7.31

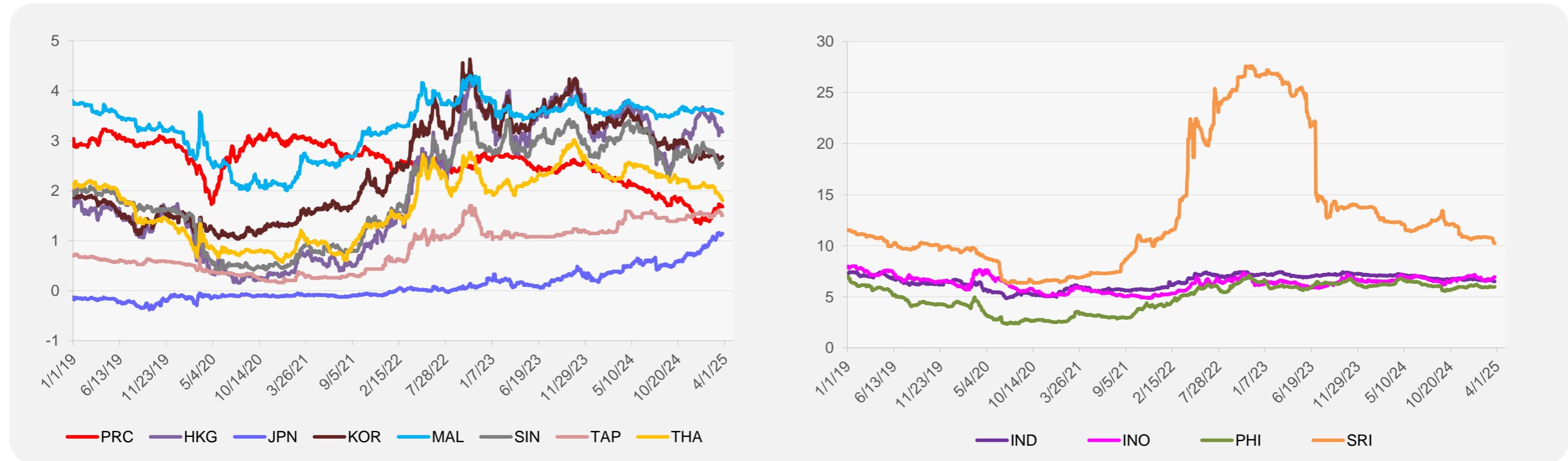
¹ Latest closing price from 19 March 2025.

² Singapore Exchange, Ribbed Smoked Sheet Rubber.

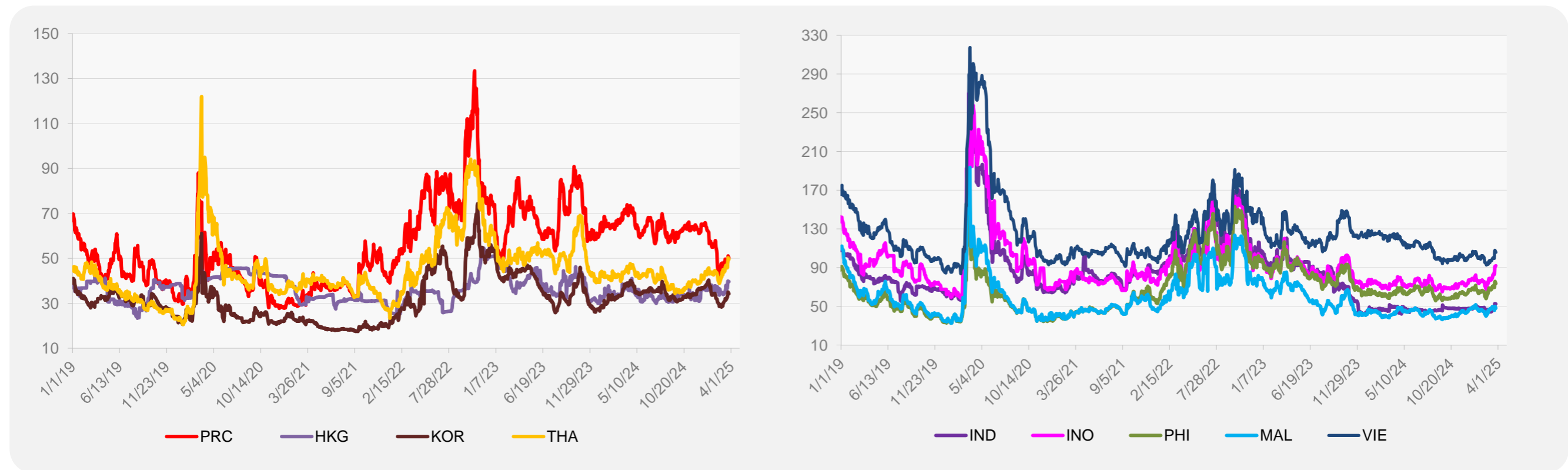


Source: ADB calculations using data from Bloomberg.

5-YEAR LOCAL CURRENCY GOVERNMENT BOND YIELDS (%)



5-YEAR CREDIT DEFAULT SWAP¹



¹ In USD and based on sovereign bonds.
Source: ADB calculations using data from Bloomberg.