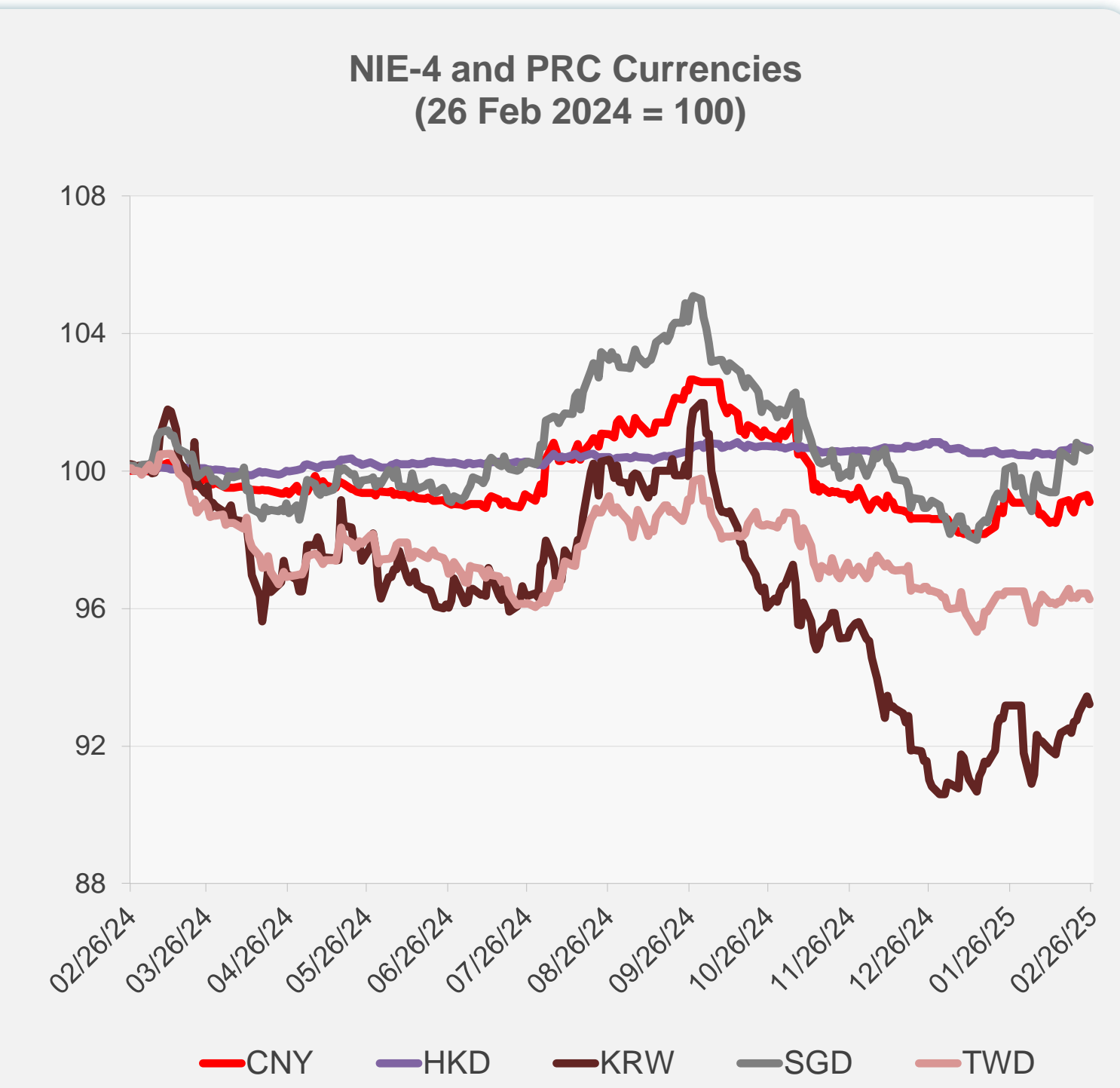
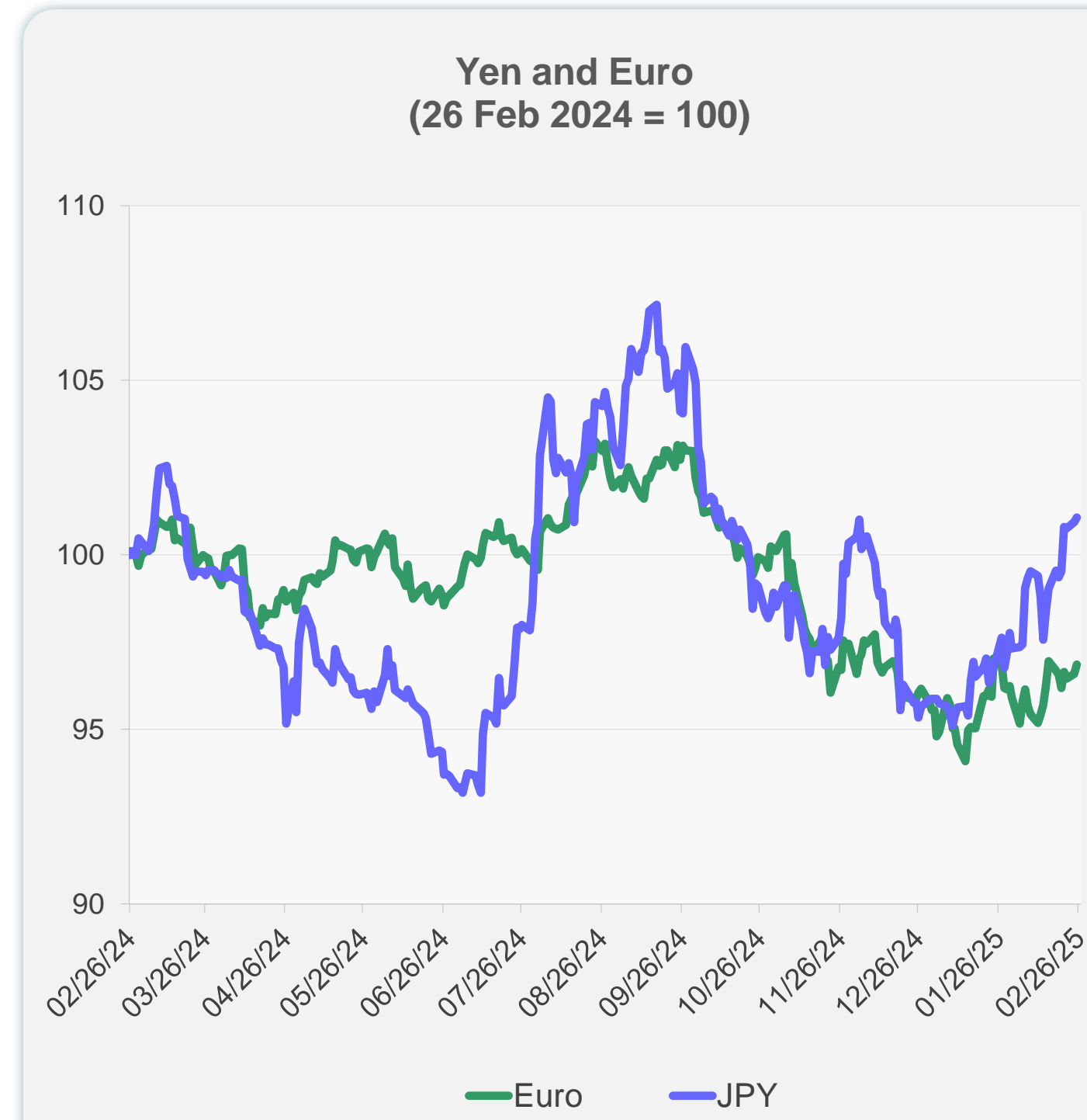
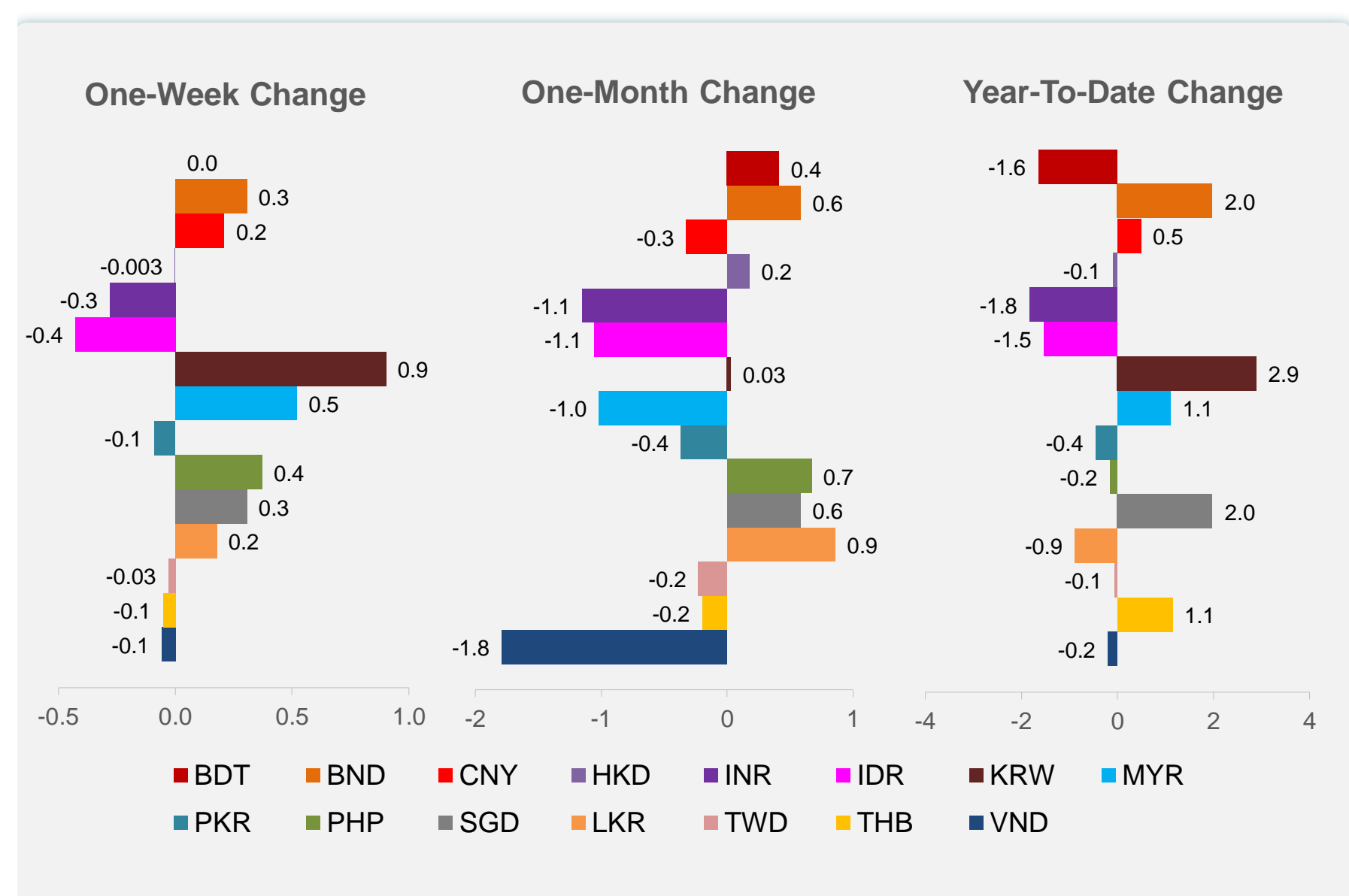
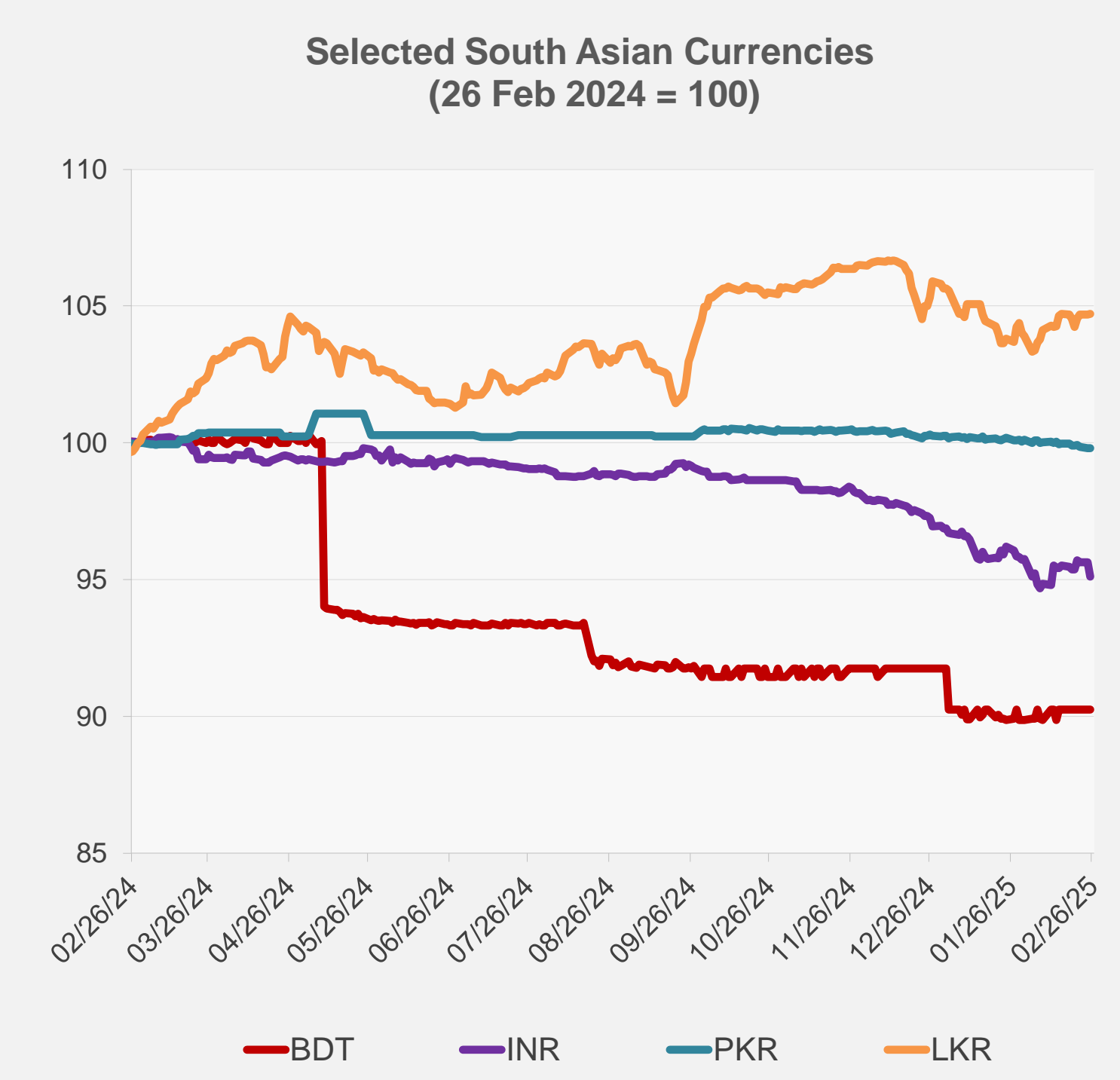
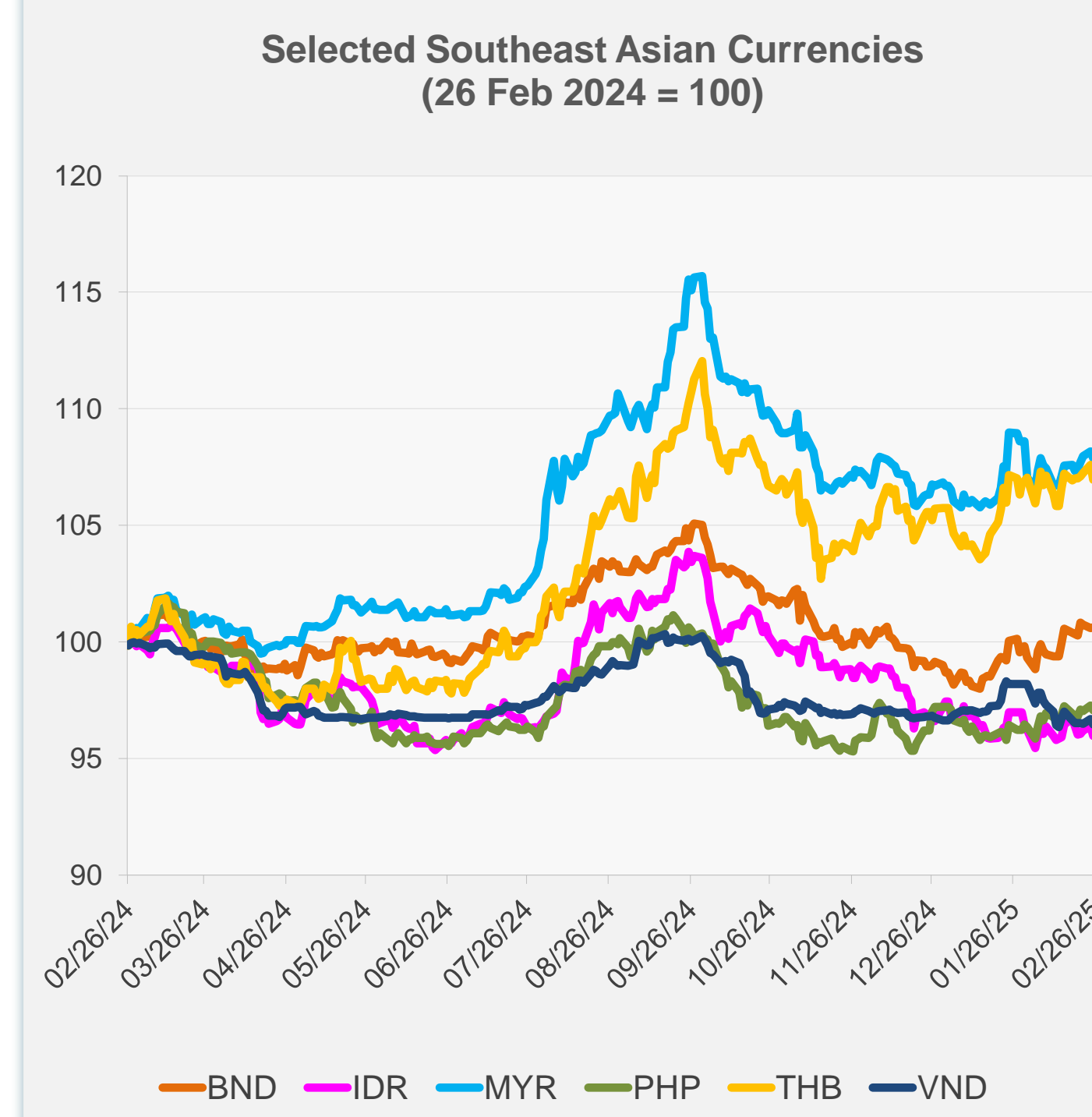


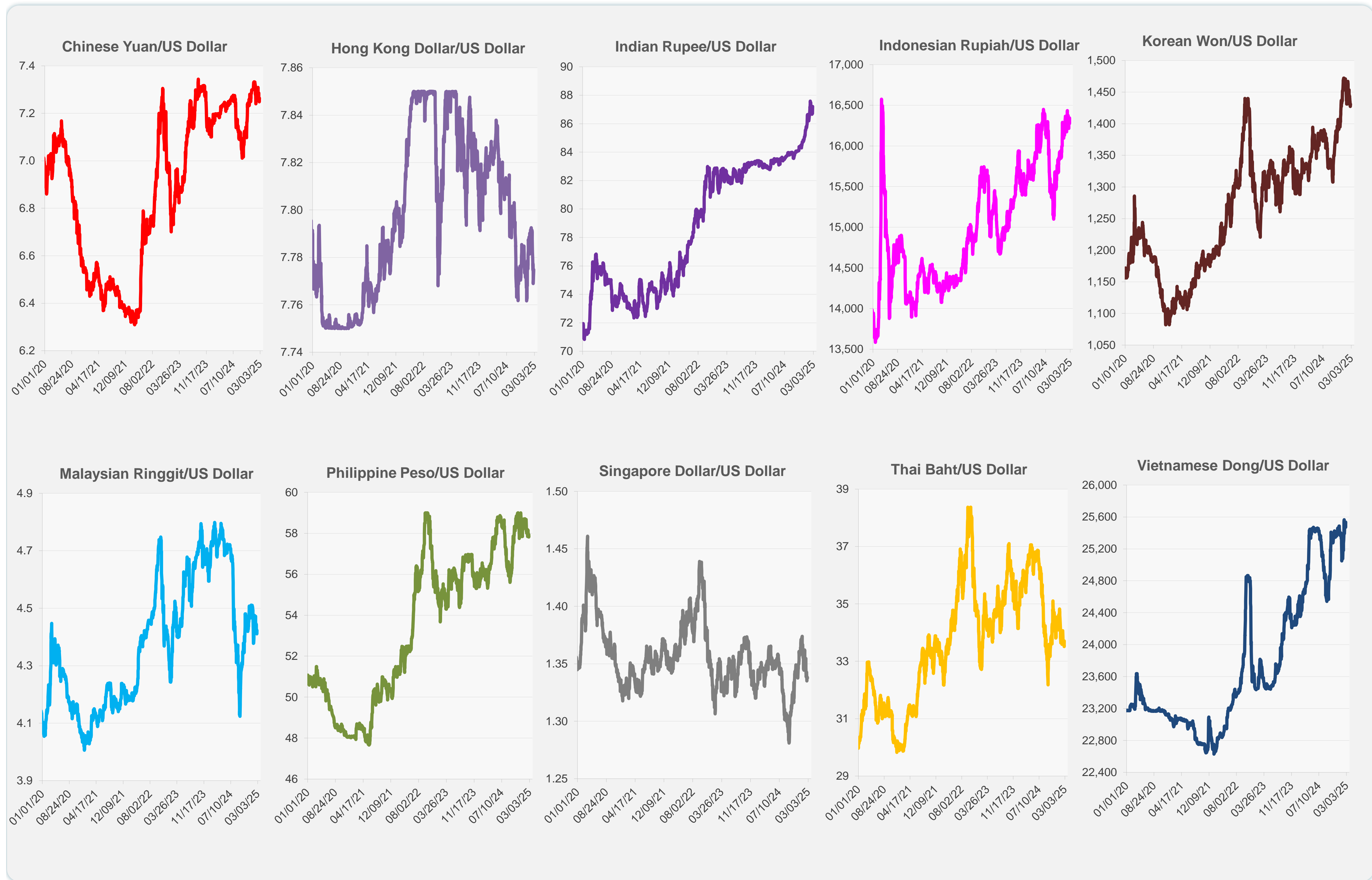
	Latest Closing	% change from Previous Day	% change from 01-Jan-25
Euro	0.95	0.27	1.38
Japanese yen (JPY)	149.09	0.14	5.42
Bangladeshi taka (BDT)	121.50	0.00	-1.65
Brunei dollar (BND)	1.34	0.04	1.98
Chinese yuan (CNY)	7.26	-0.22	0.49
Hong Kong dollar (HKD)	7.77	-0.01	-0.09
Indian rupee (INR)	87.21	-0.56	-1.82
Indonesian rupiah (IDR)	16,345.00	-0.43	-1.53
Korean won (KRW)	1,430.80	-0.25	2.89
Malaysian ringgit (MYR)	4.42	-0.27	1.11
Pakistan rupee (PKR)	279.63	0.01	-0.45
Philippine peso (PHP)	57.94	-0.19	-0.16
Singapore dollar (SGD)	1.34	0.04	1.98
Sri Lanka rupee (LKR)	295.60	0.01	-0.88
Taipei,China NT dollar (TWD)	32.80	-0.17	-0.06
Thai baht (THB)	33.71	-0.59	1.14
Vietnamese dong (VND)	25,535.00	-0.25	-0.20



NIE = Newly Industrialized Economies



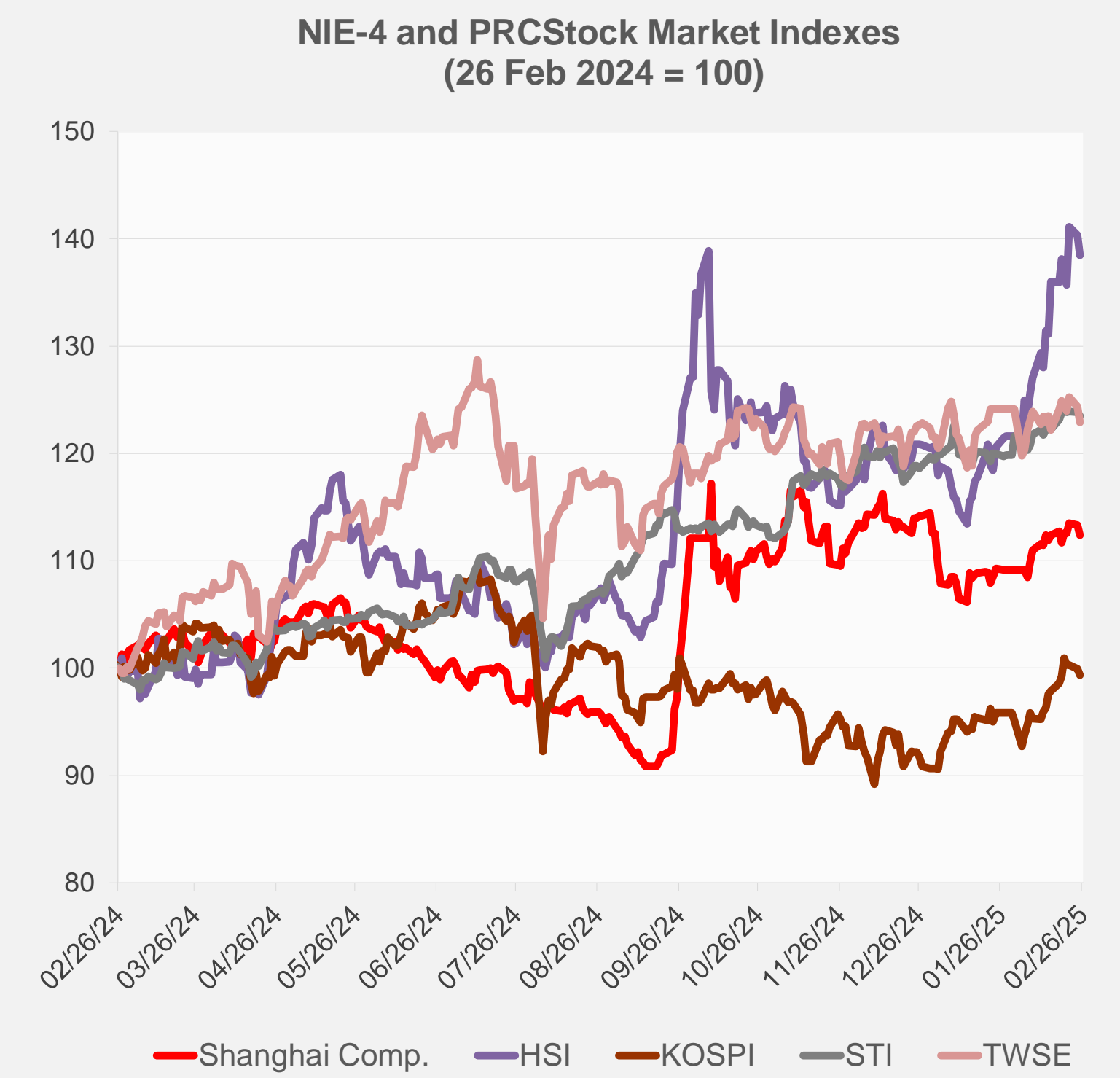
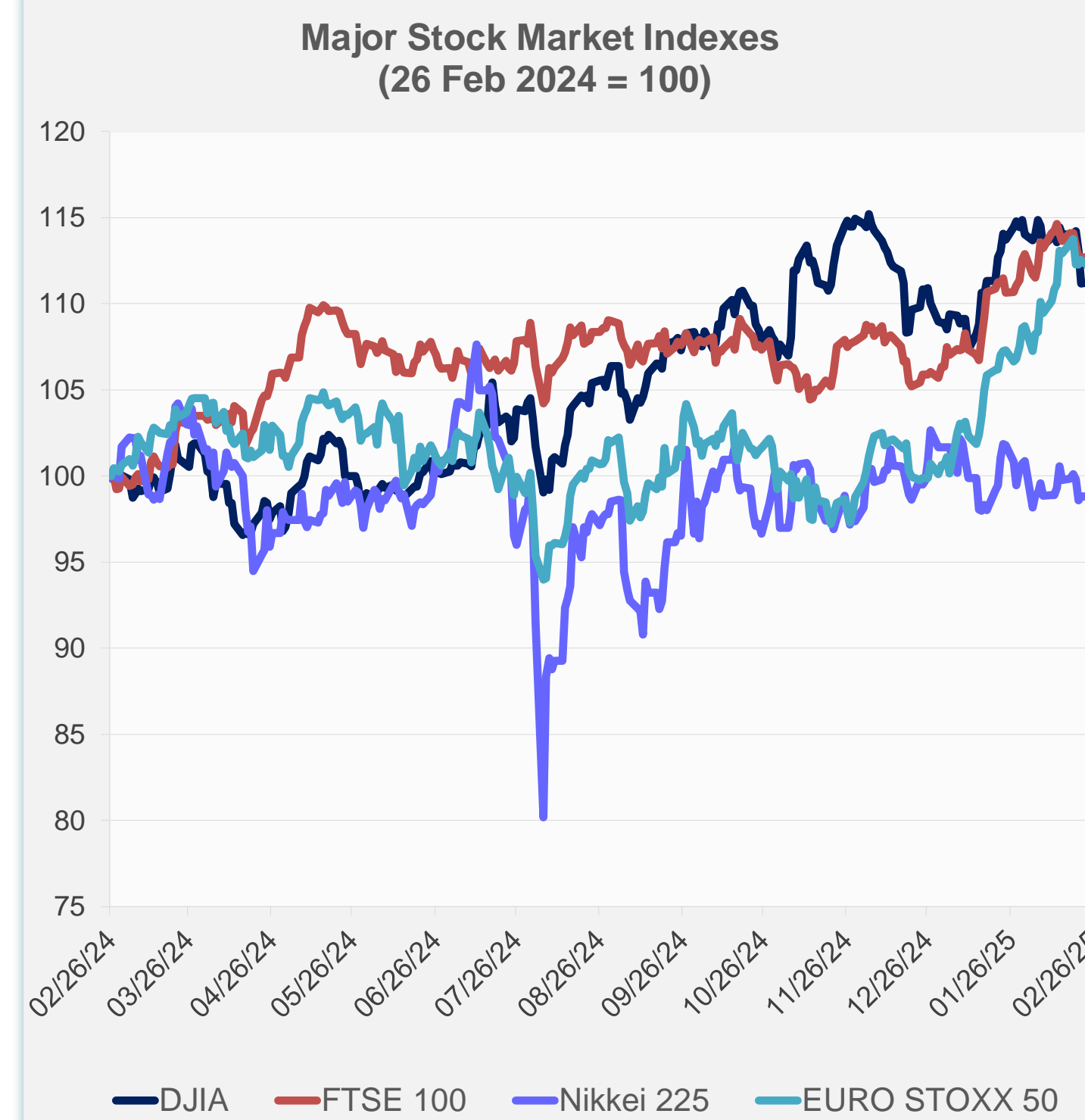
Note: Negative/Decreasing values indicate depreciation of local currency, and positive/increasing values indicate appreciation.
Source: ADB calculations using data from Haver Analytics.



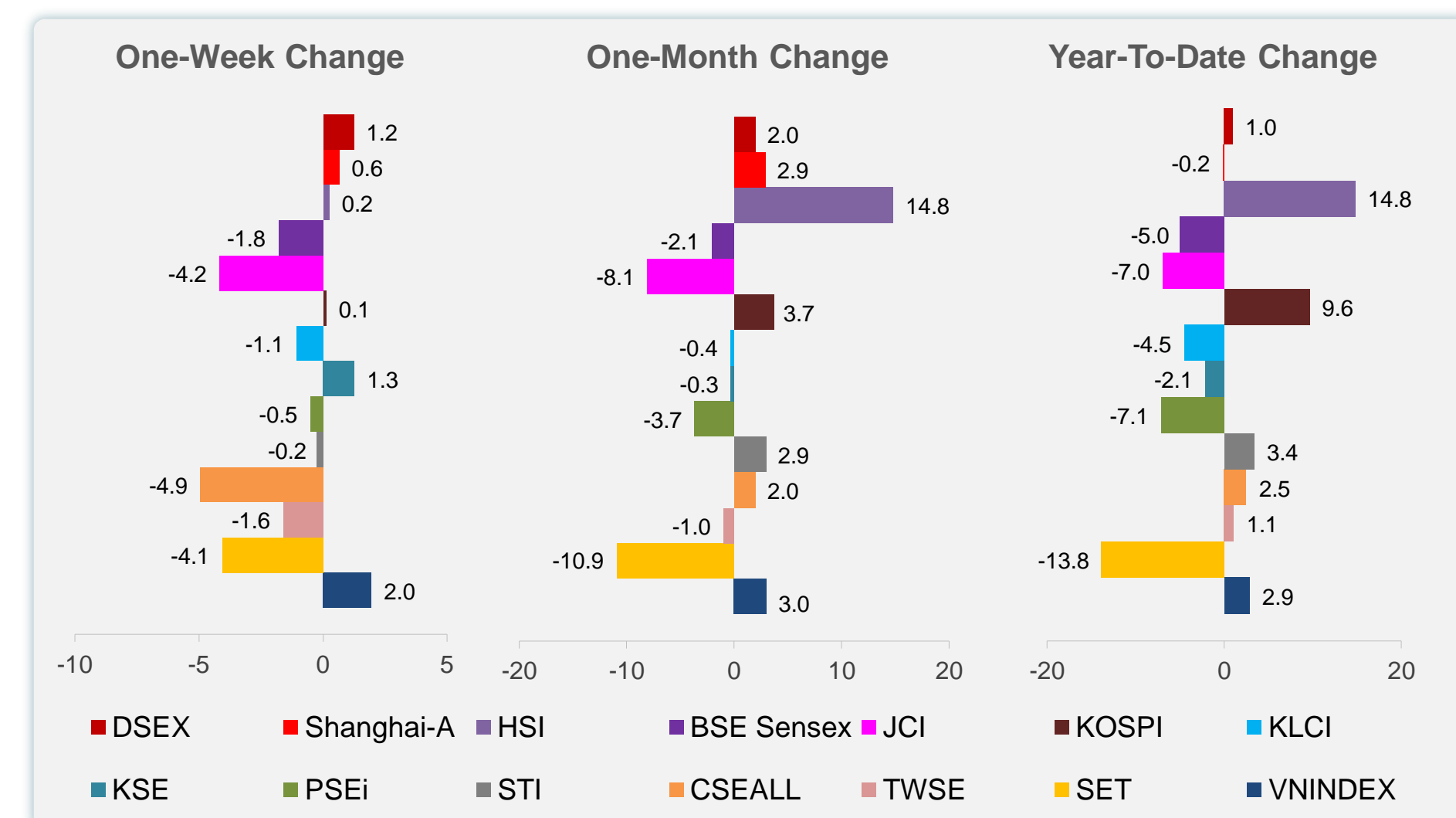
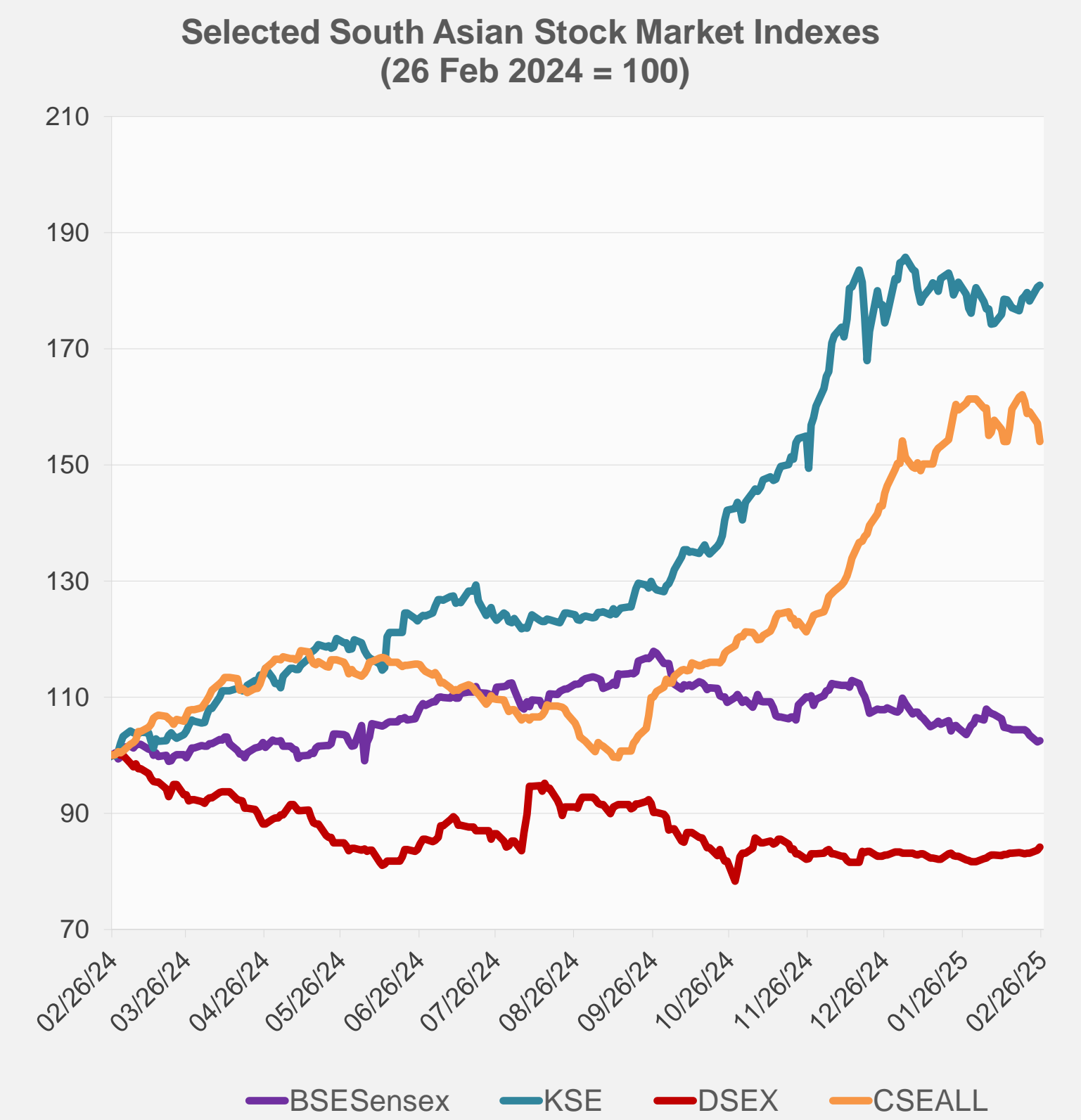
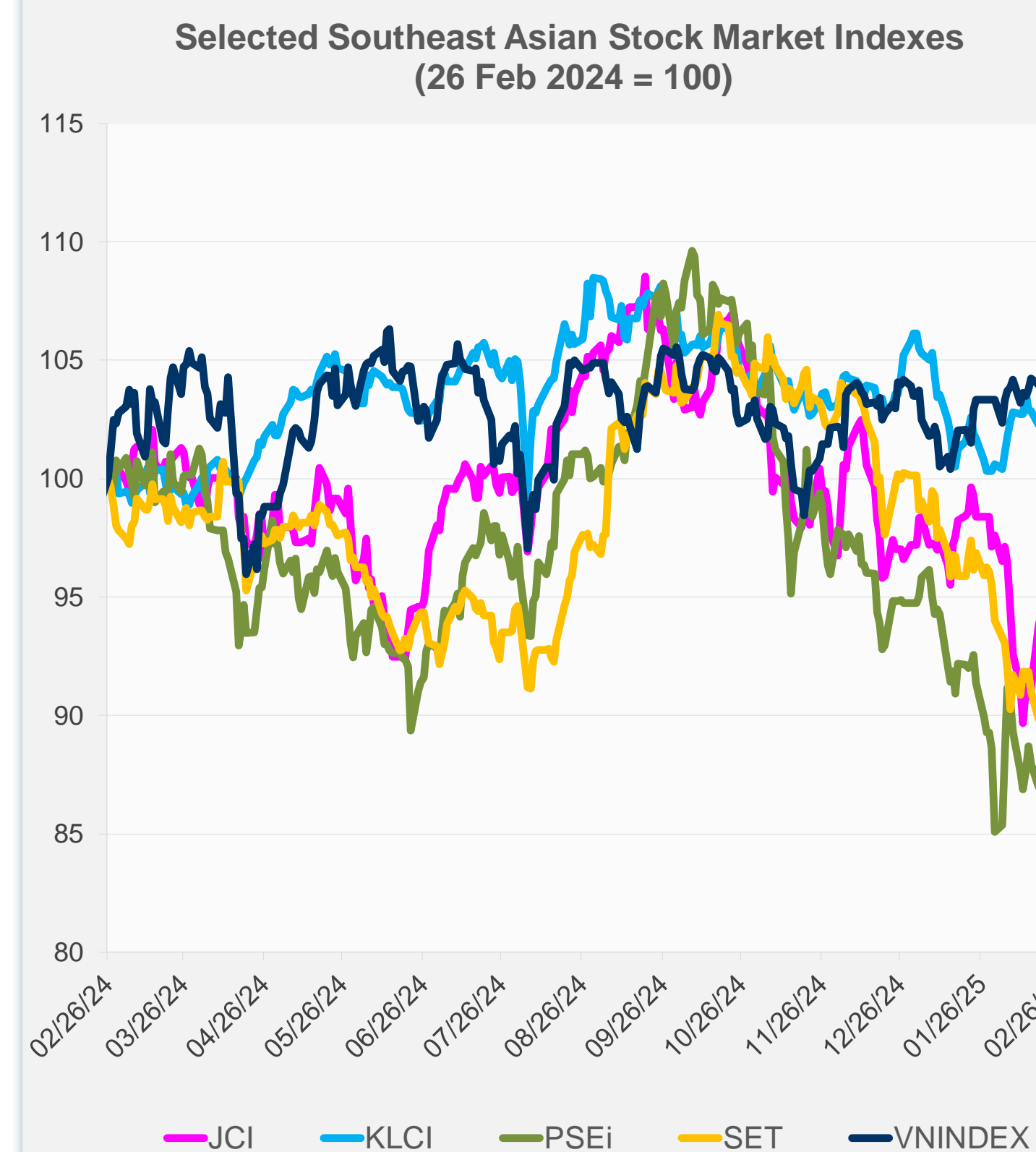
Source: Haver Analytics.

Daily Market Watch
STOCK INDEXES

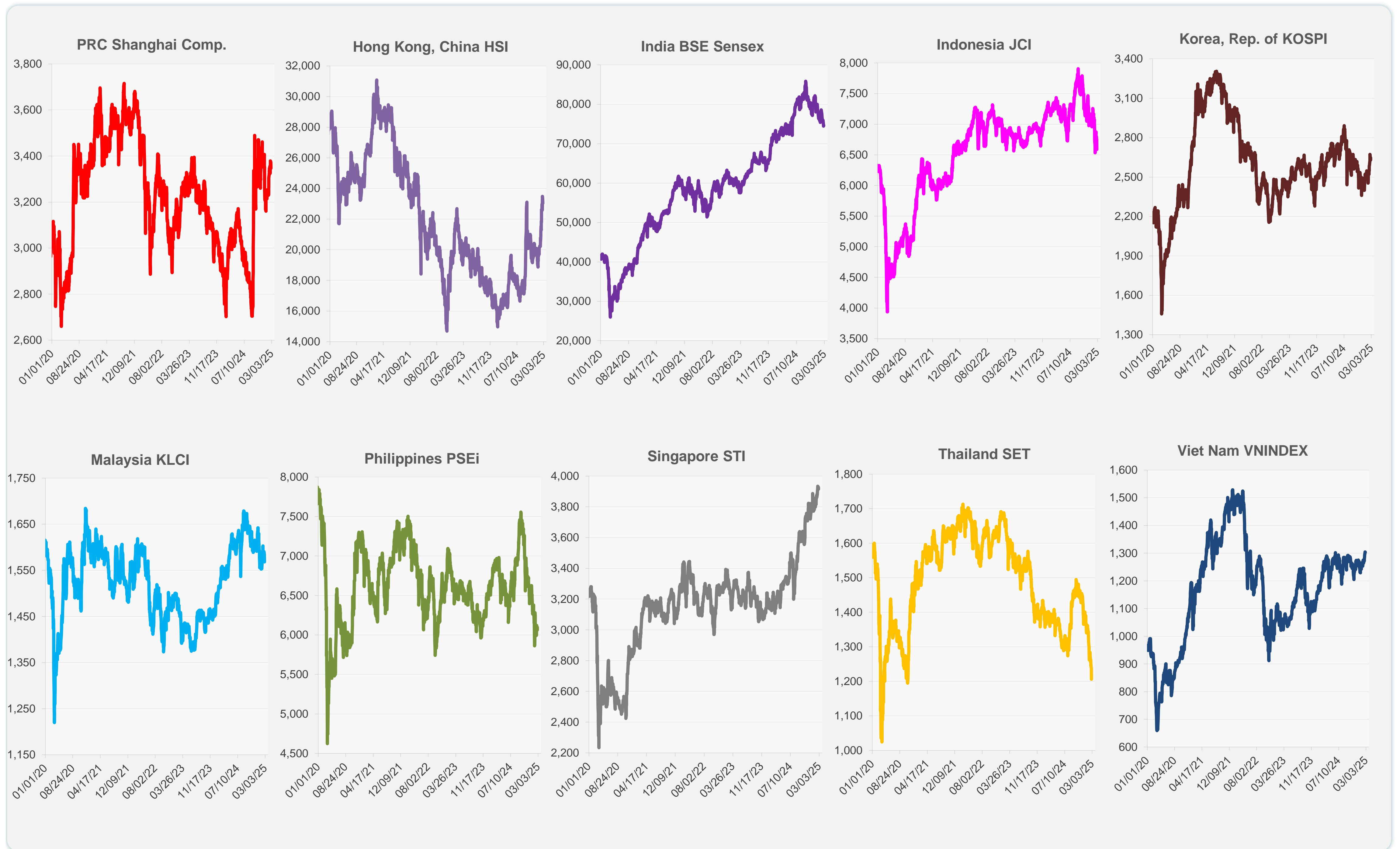
	Latest Closing	% change from Previous Day	% change from 01-Jan-25
US Dow Jones Ind Avg	43,621.16	0.37	2.53
US NASDAQ	19,026.39	-1.35	-1.47
US S&P 500	5,955.25	-0.47	1.25
UK FTSE 100	8,668.67	0.11	6.06
EURO STOXX 50	5,447.90	-0.11	11.27
Japan NIKKEI 225	38,237.79	-1.39	-4.15
Bangladesh DSEX	5,267.89	0.63	0.95
PRC Shanghai Comp.	3,346.04	-0.80	-0.17
Hong Kong, China HSI	23,034.02	-1.32	14.83
India BSE Sensex	74,602.12	0.20	-4.97
Indonesia JCI	6,587.09	-2.41	-6.96
Korea, Rep. of KOSPI	2,630.29	-0.57	9.62
Malaysia KLCI	1,568.03	-1.02	-4.52
Pakistan KSE 100	114,528.08	0.17	-2.12
Philippines PSEi	6,064.16	-0.52	-7.12
Singapore STI	3,915.87	-0.30	3.39
Sri Lanka CSEALL	16,345.01	-1.96	2.51
Taipei, China TWSE	23,285.72	-1.19	1.09
Thailand SET	1,206.39	-2.38	-13.84
Viet Nam VNINDEX	1,303.16	-0.11	2.87



NIE = Newly Industrialized Economies



Sources: ADB calculations using data from CEIC Data Company and Haver Analytics.



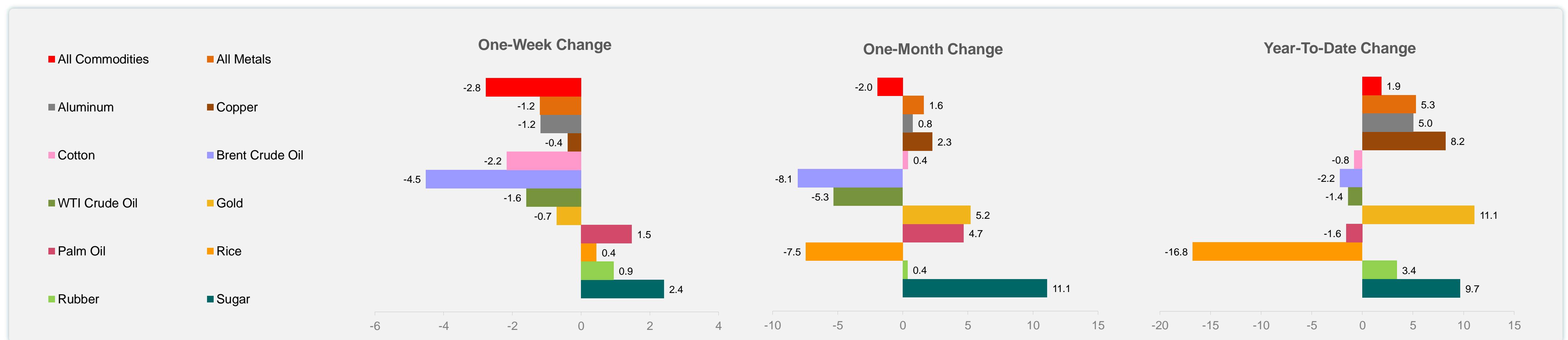
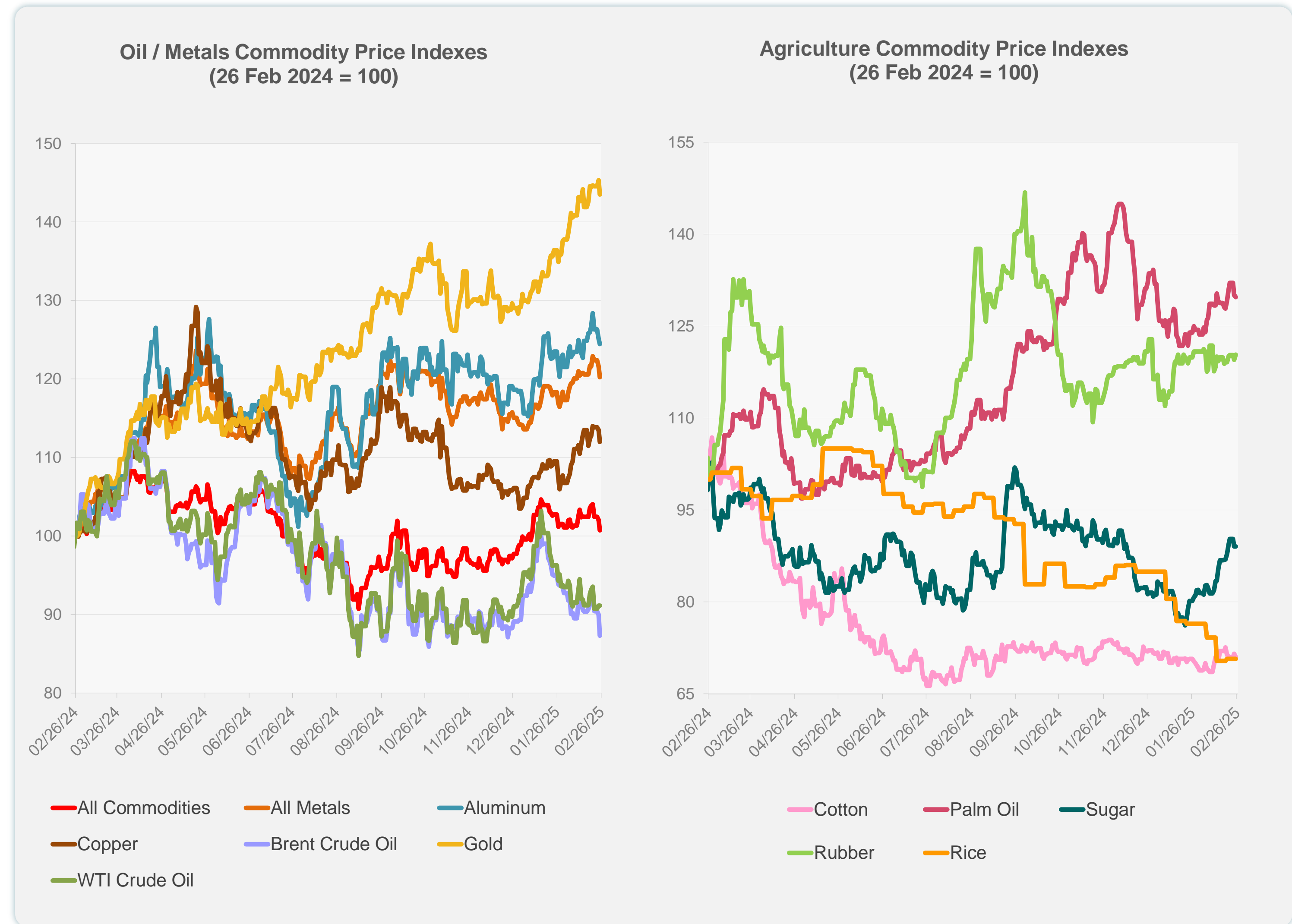
Sources: CEIC Data Company and Haver Analytics.

Daily Market Watch
COMMODITY PRICES

26 February 2025, 9:00 AM Manila

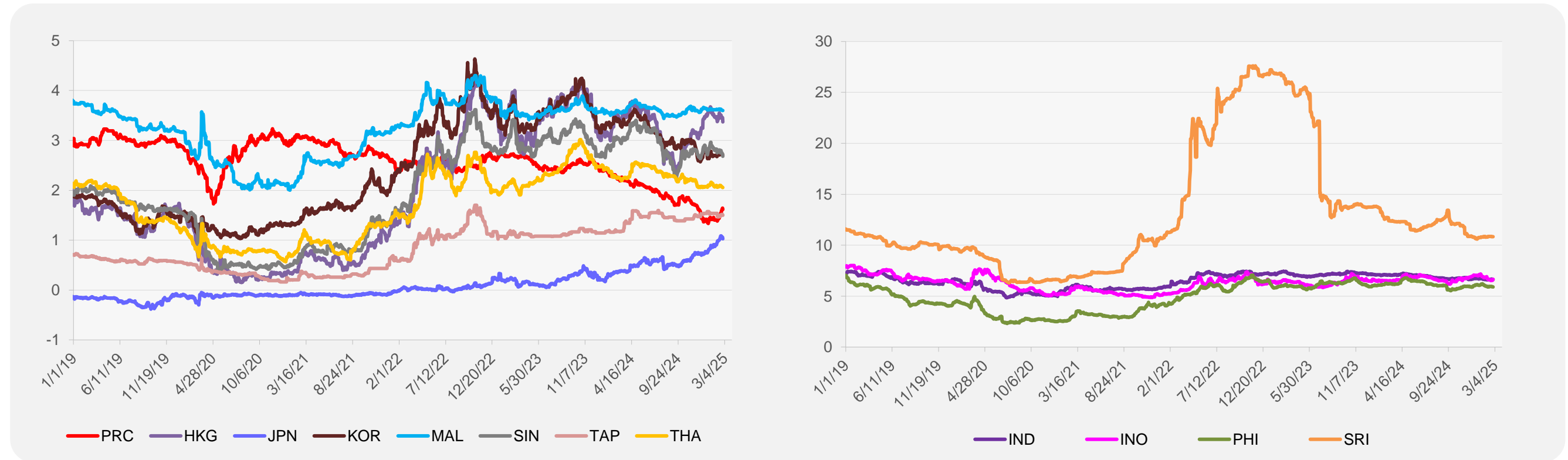
	Unit	Latest Closing	% change from Previous Day	% change from 01-Jan-25
S&P All Commodities	US\$	559.95	-1.26	1.87
S&P All Metals	US\$	323.63	-1.13	5.29
Aluminum	US\$/metric ton	2,654.09	-0.54	5.04
Copper	US\$/metric ton	9,363.85	-1.32	8.22
Cotton	US cents/lb	65.37	-0.77	-0.80
Brent Crude Oil	US\$/barrel	72.46	-2.95	-2.22
WTI Crude Oil	US\$/barrel	70.70	0.00	-1.42
Gold	US\$/troy oz	2,914.98	-1.25	11.07
Palm Oil	US\$/metric tonne	1,082.57	-0.23	-1.60
Rice ¹	US\$/metric ton	447.00	0.00	-16.76
Rubber ²	US\$/kg	244.90	0.70	3.42
Sugar	US cents/lb	19.96	0.00	9.67

¹ Latest closing price from 19 February 2025.
² Singapore Exchange, Ribbed Smoked Sheet Rubber.

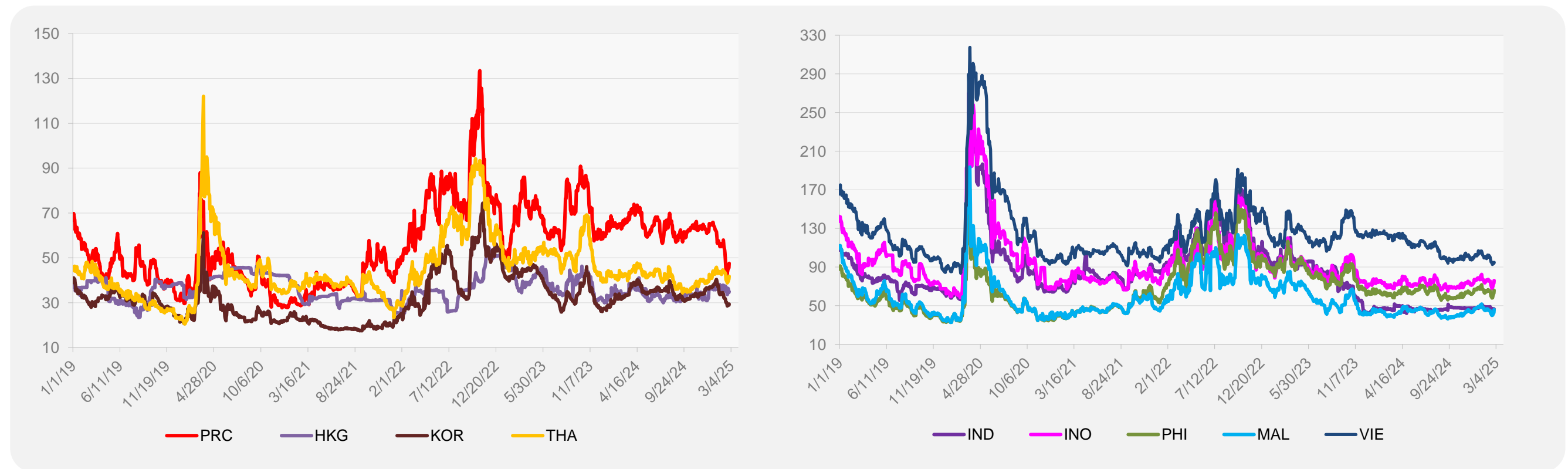


Source: ADB calculations using data from Bloomberg.

5-YEAR LOCAL CURRENCY GOVERNMENT BOND YIELDS (%)



5-YEAR CREDIT DEFAULT SWAP¹



¹ In USD and based on sovereign bonds.
Source: ADB calculations using data from Bloomberg.