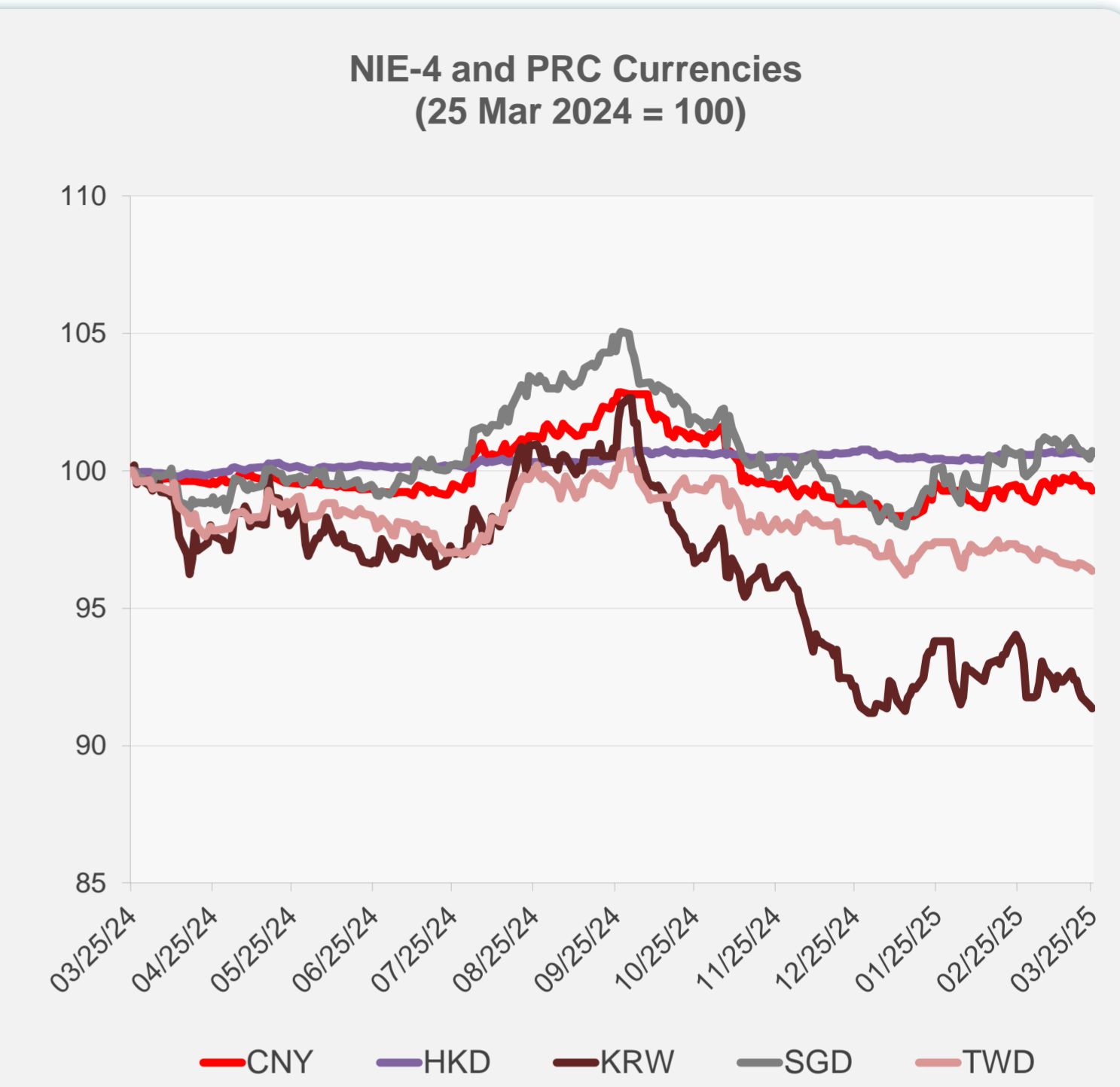
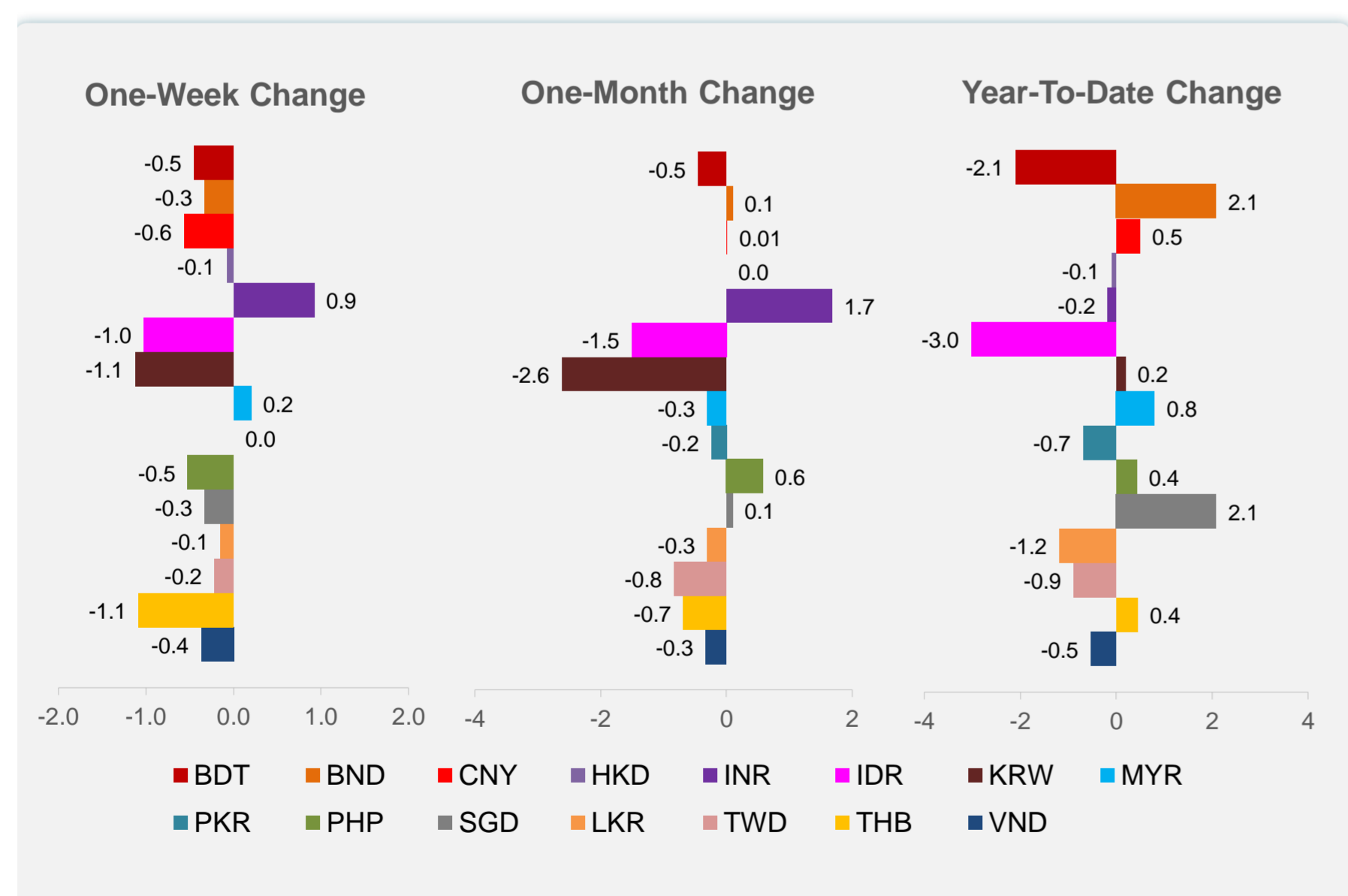
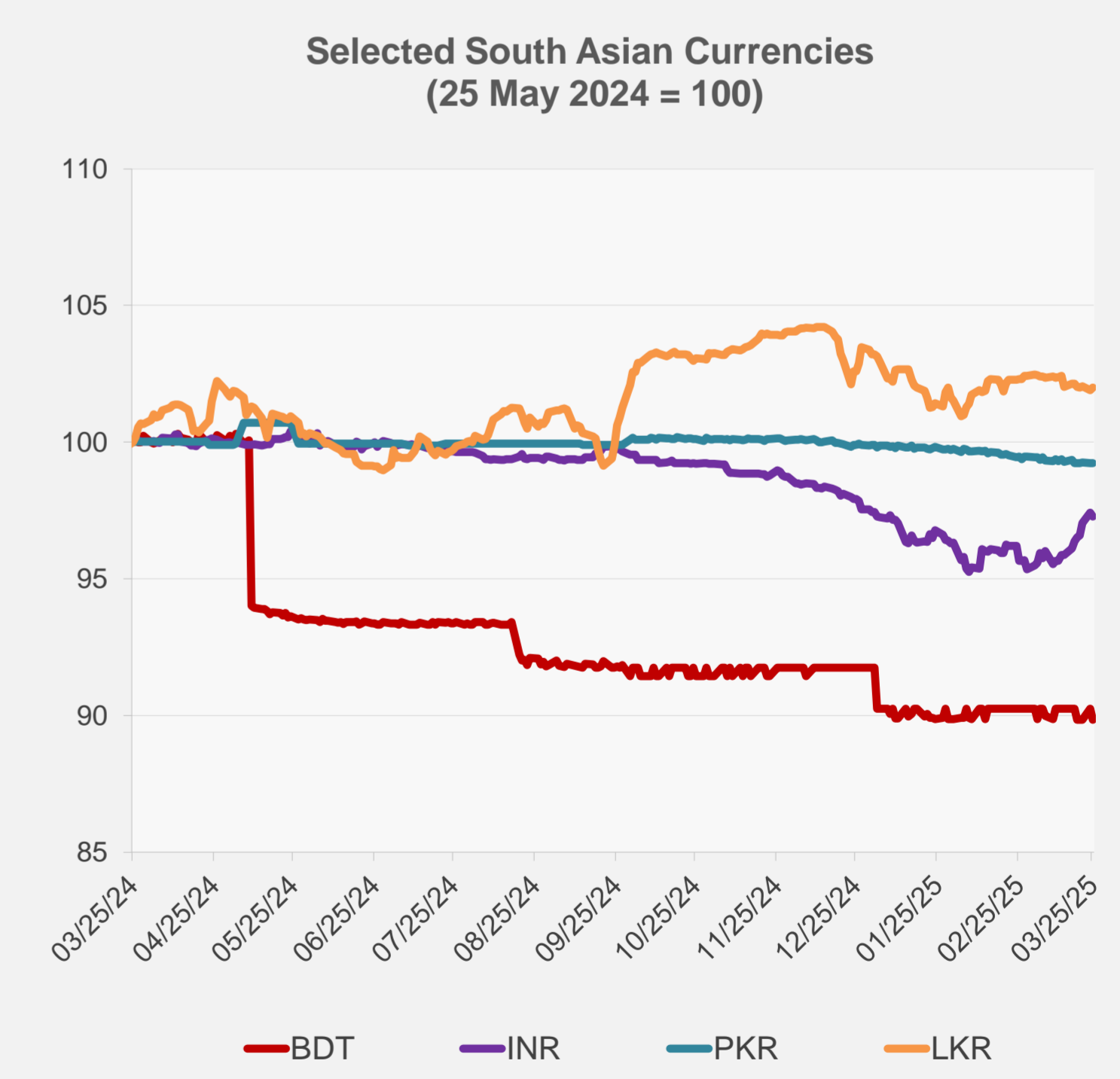
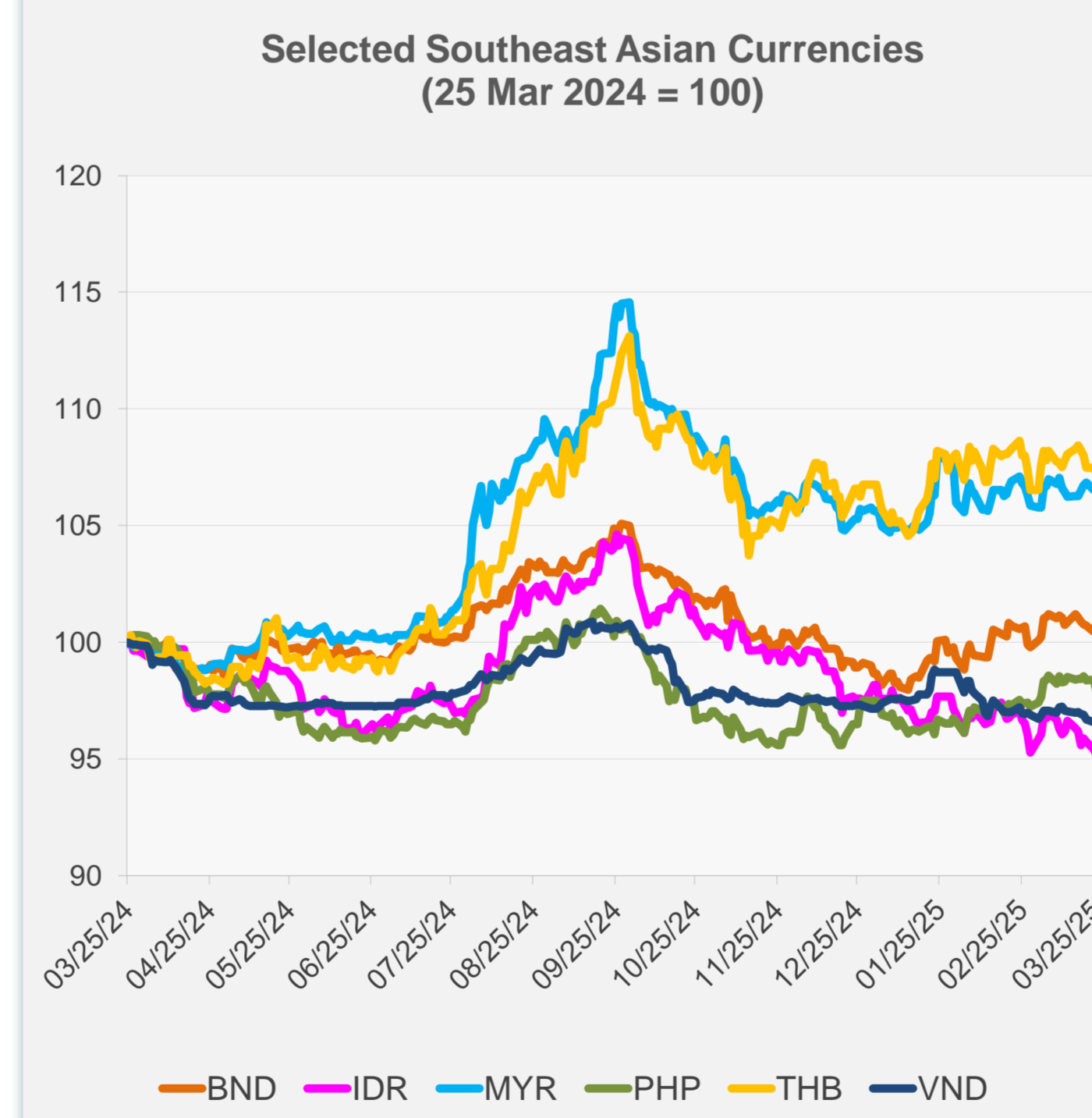


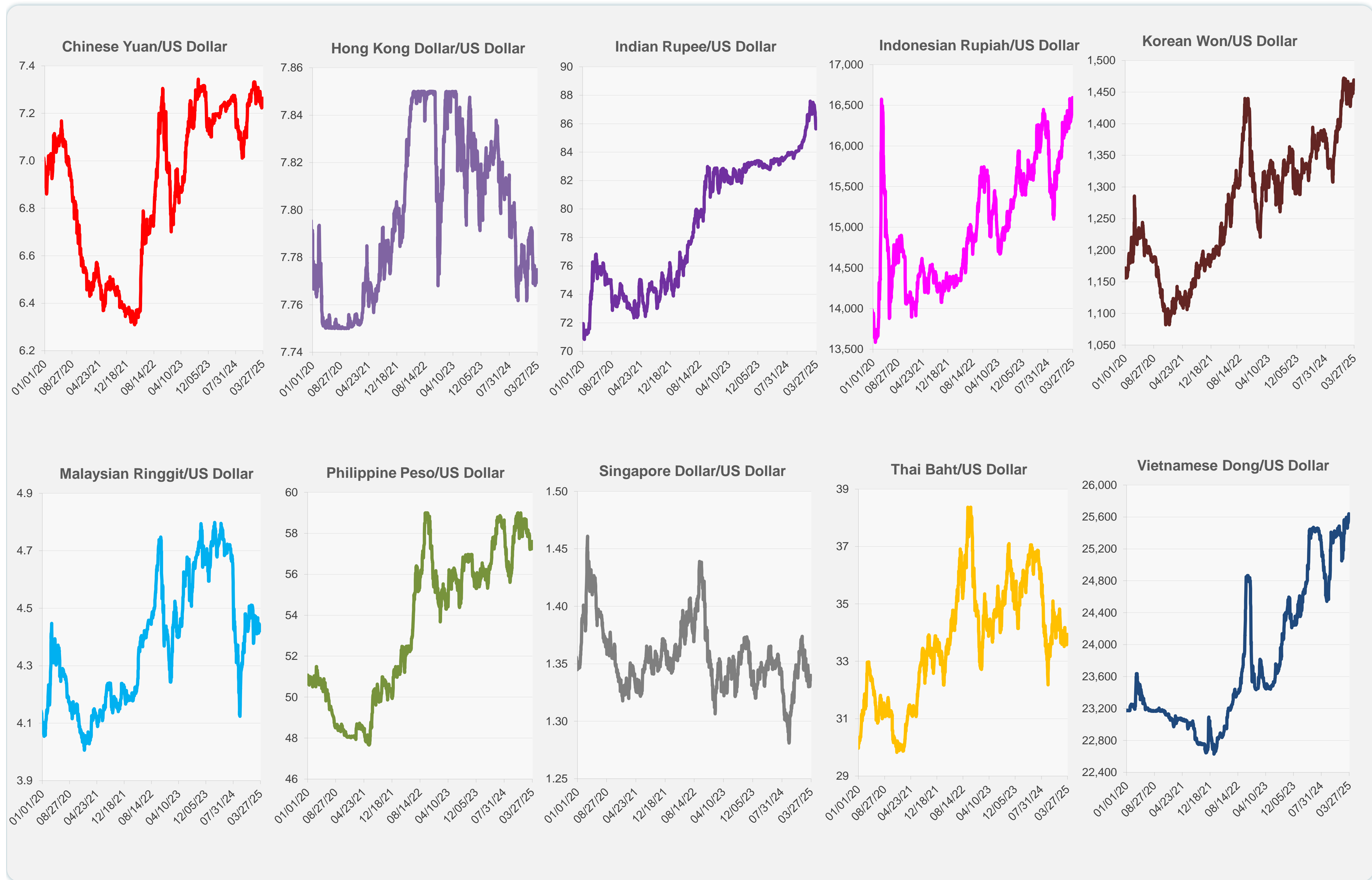
	Latest Closing	% change from Previous Day	% change from 01-Jan-25
Euro	0.93	0.05	4.30
Japanese yen (JPY)	149.77	0.65	4.93
Bangladeshi taka (BDT)	122.05	-0.45	-2.09
Brunei dollar (BND)	1.34	0.27	2.08
Chinese yuan (CNY)	7.26	-0.17	0.50
Hong Kong dollar (HKD)	7.77	0.00	-0.09
Indian rupee (INR)	85.76	-0.14	-0.17
Indonesian rupiah (IDR)	16,595.00	-0.24	-3.01
Korean won (KRW)	1,469.30	-0.12	0.19
Malaysian ringgit (MYR)	4.44	-0.05	0.80
Pakistan rupee (PKR)	280.30	0.00	-0.69
Philippine peso (PHP)	57.60	-0.49	0.43
Singapore dollar (SGD)	1.34	0.27	2.08
Sri Lanka rupee (LKR)	296.50	0.08	-1.18
Taipei,China NT dollar (TWD)	33.08	-0.08	-0.88
Thai baht (THB)	33.94	-0.23	0.45
Vietnamese dong (VND)	25,620.00	0.08	-0.53



NIE = Newly Industrialized Economies



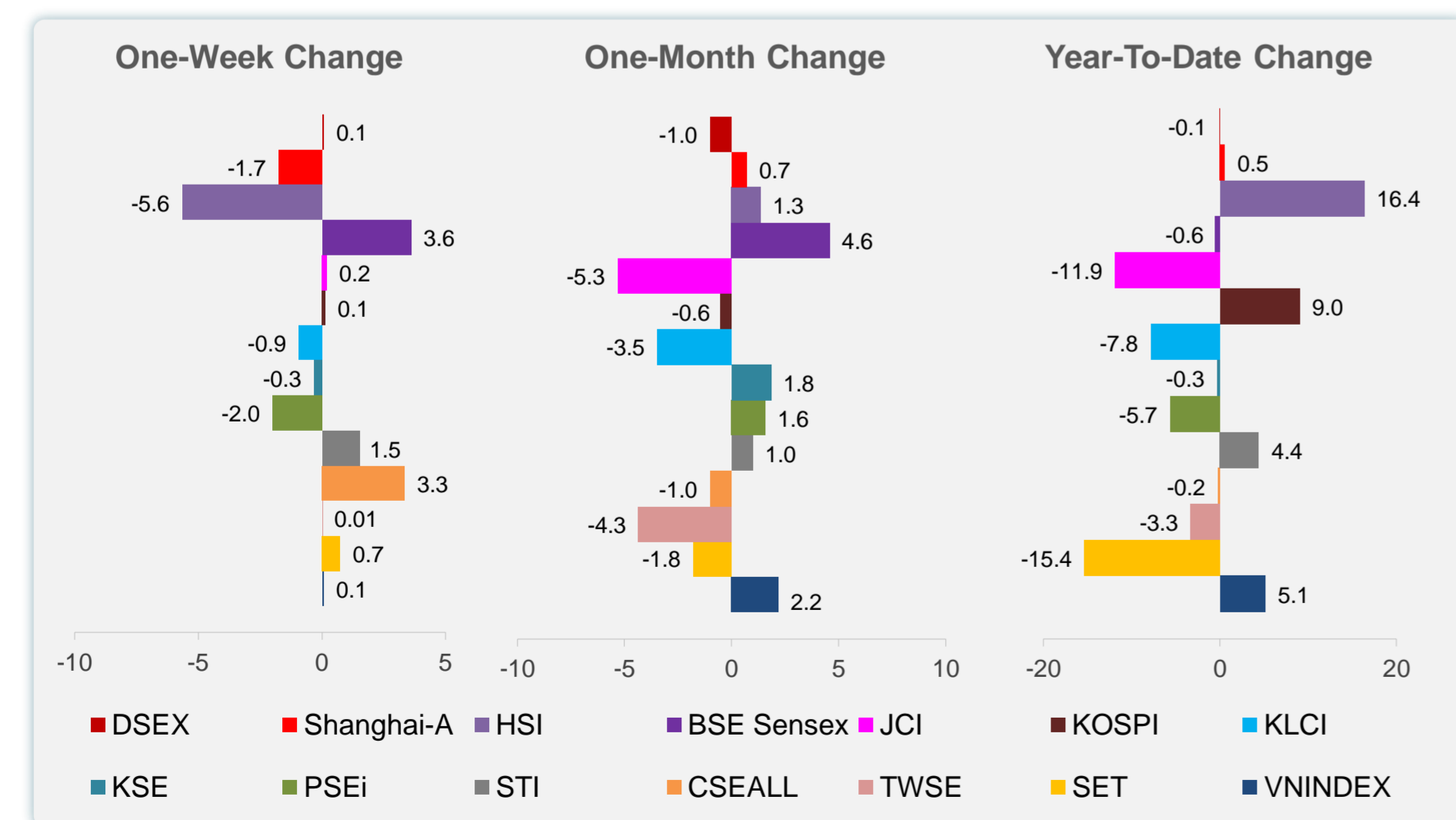
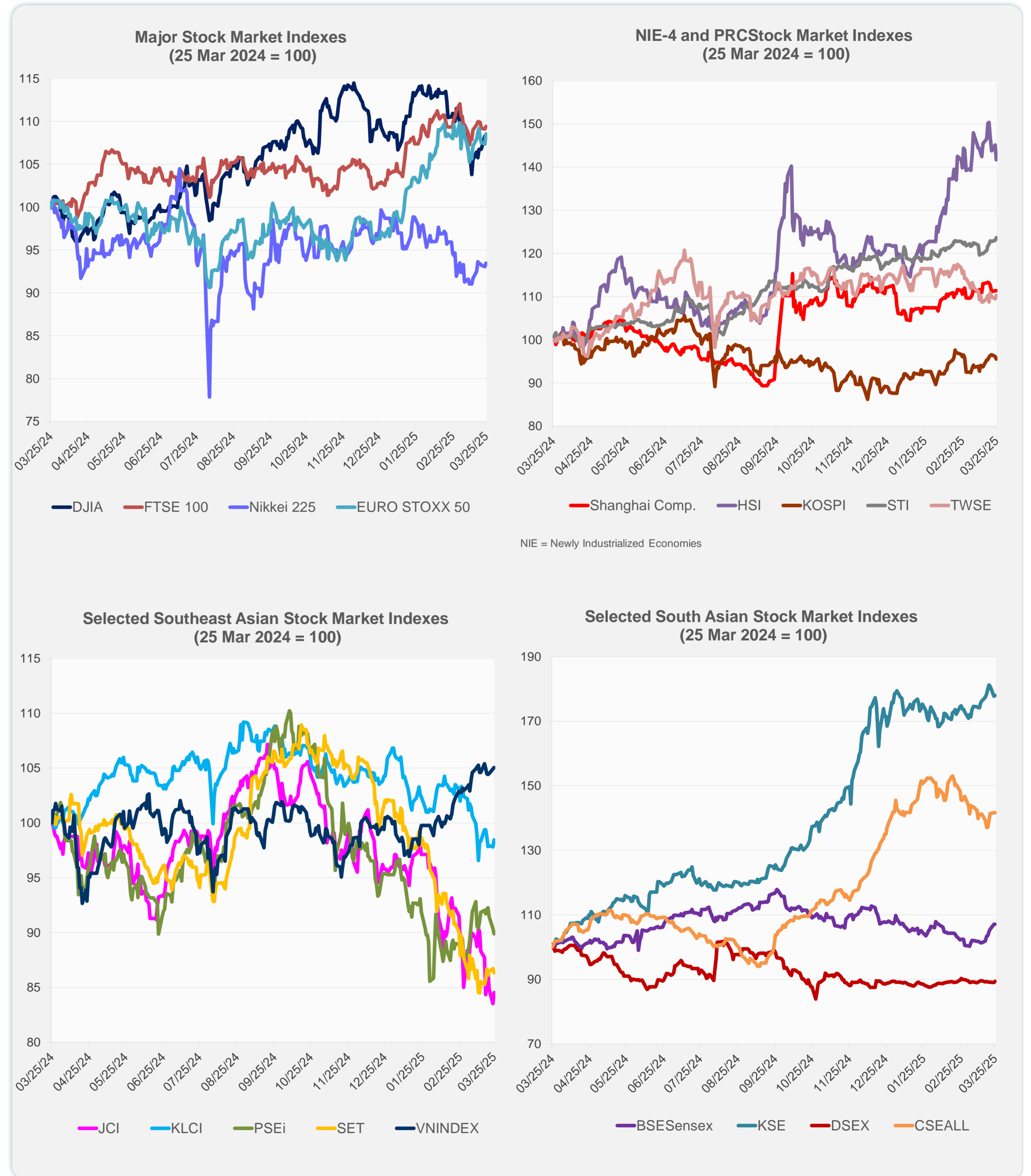
Note: Negative/Decreasing values indicate depreciation of local currency, and positive/increasing values indicate appreciation.
Source: ADB calculations using data from Haver Analytics.



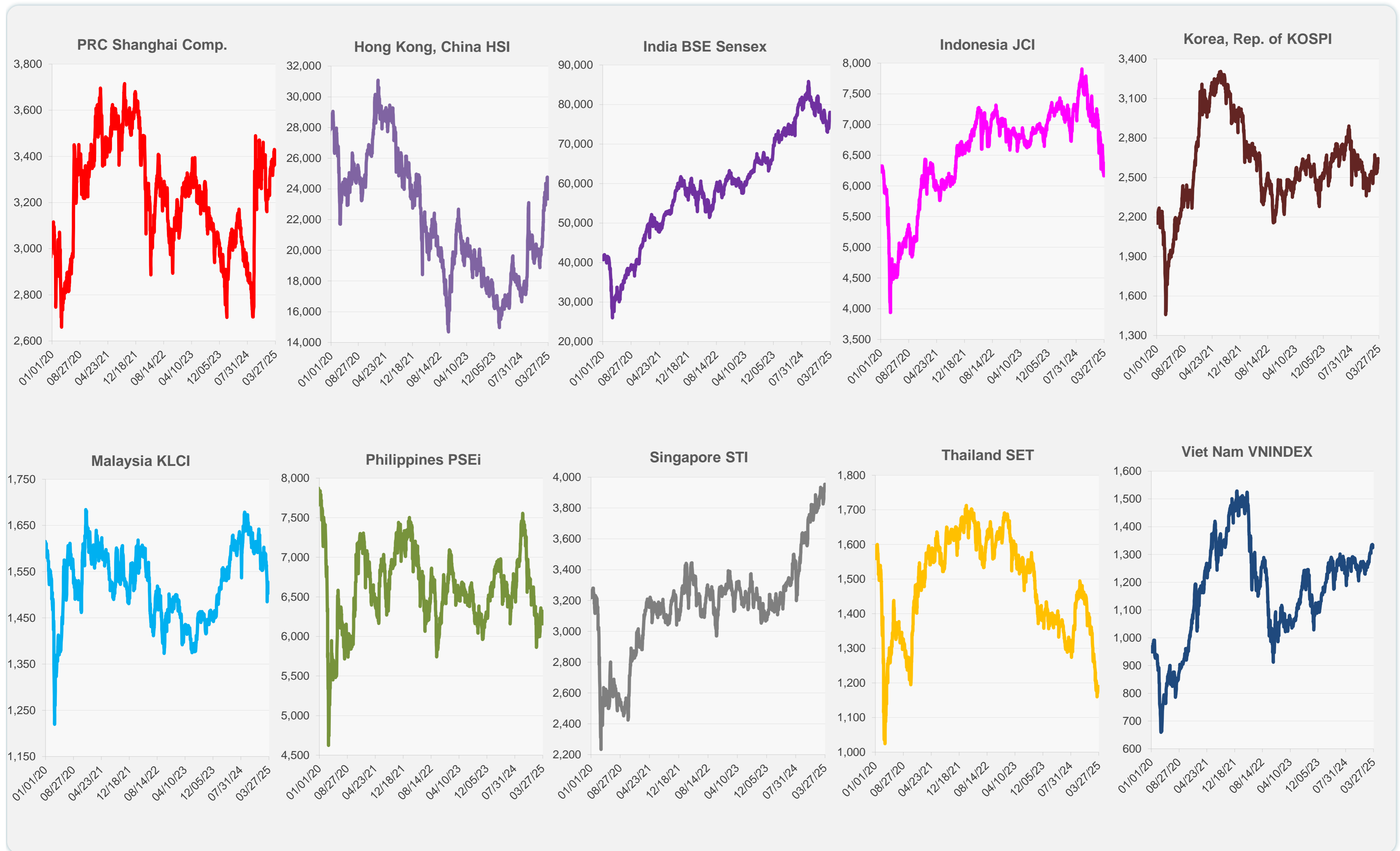
Source: Haver Analytics.

Daily Market Watch
STOCK INDEXES

	Latest Closing	% change from Previous Day	% change from 01-Jan-25
US Dow Jones Ind Avg	42,587.50	0.01	0.10
US NASDAQ	18,271.86	0.46	-5.38
US S&P 500	5,776.65	0.16	-1.78
UK FTSE 100	8,663.80	0.30	6.00
EURO STOXX 50	5,475.08	1.09	11.83
Japan NIKKEI 225	37,780.54	0.46	-5.30
Bangladesh DSEX	5,214.21	0.33	-0.08
PRC Shanghai Comp.	3,369.98	0.00	0.54
Hong Kong, China HSI	23,344.25	-2.35	16.37
India BSE Sensex	78,017.19	0.04	-0.62
Indonesia JCI	6,235.62	1.21	-11.93
Korea, Rep. of KOSPI	2,615.81	-0.62	9.02
Malaysia KLCI	1,513.60	0.65	-7.84
Pakistan KSE 100	116,633.16	0.17	-0.32
Philippines PSEi	6,159.85	-0.52	-5.65
Singapore STI	3,954.53	0.46	4.41
Sri Lanka CSEALL	15,908.23	-0.03	-0.23
Taipei,China TWSE	22,273.19	0.75	-3.31
Thailand SET	1,184.93	-0.43	-15.37
Viet Nam VNINDEX	1,331.92	0.12	5.14



Sources: ADB calculations using data from CEIC Data Company and Haver Analytics.



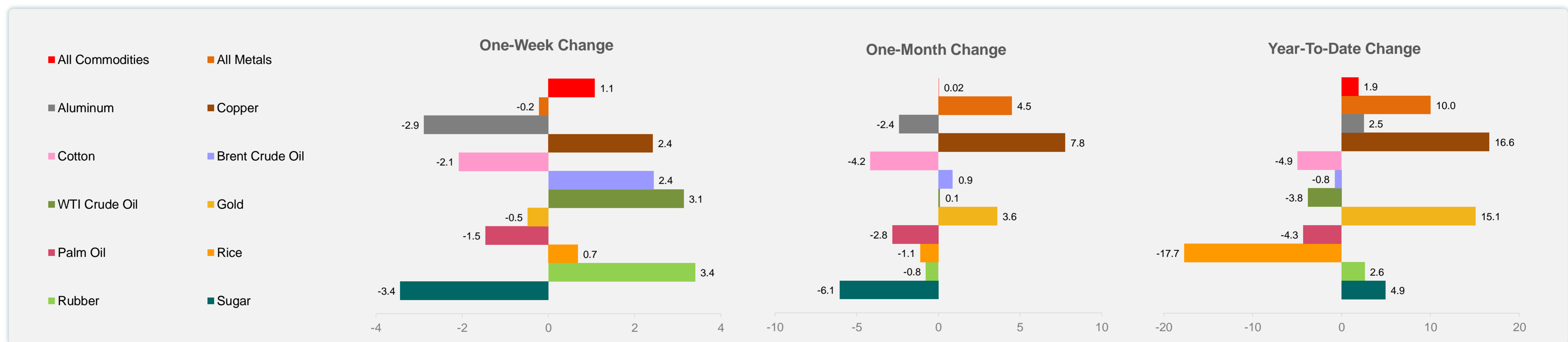
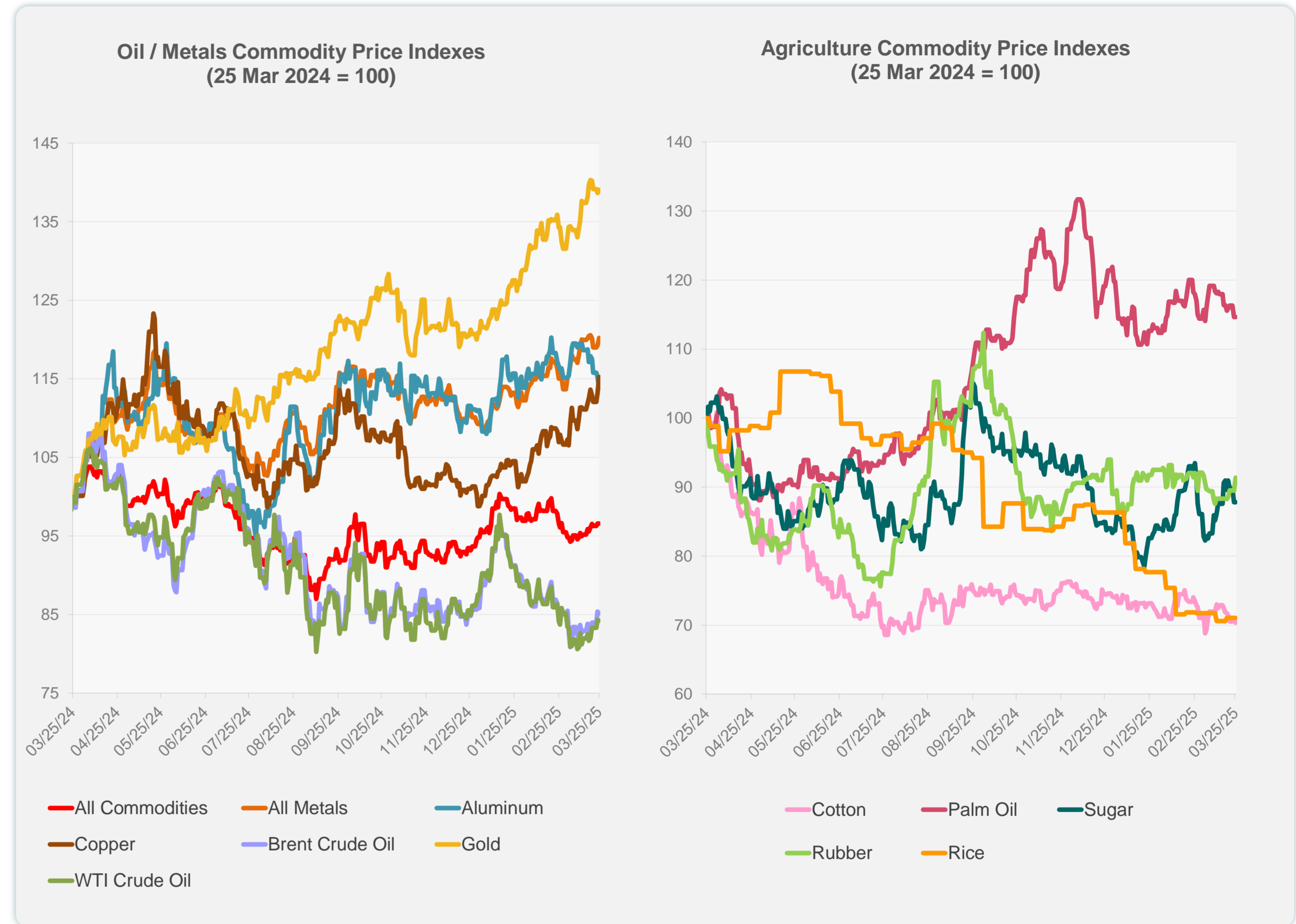
Sources: CEIC Data Company and Haver Analytics.

Daily Market Watch
COMMODITY PRICES

	Unit	Latest Closing	% change from Previous Day	% change from 01-Jan-25
S&P All Commodities	US\$	560.08	0.01	1.90
S&P All Metals	US\$	338.19	0.81	10.02
Aluminum	US\$/metric ton	2,590.16	-1.25	2.51
Copper	US\$/metric ton	10,091.54	1.77	16.63
Cotton	US cents/lb	62.64	-0.45	-4.95
Brent Crude Oil	US\$/barrel	73.53	-0.25	-0.78
WTI Crude Oil	US\$/barrel	69.00	-0.16	-3.79
Gold	US\$/troy oz	3,020.09	0.30	15.07
Palm Oil	US\$/metric tonne	1,052.64	-0.01	-4.32
Rice ¹	US\$/metric ton	442.00	0.00	-17.69
Rubber ²	US\$/kg	243.00	2.10	2.62
Sugar	US cents/lb	19.10	0.00	4.95

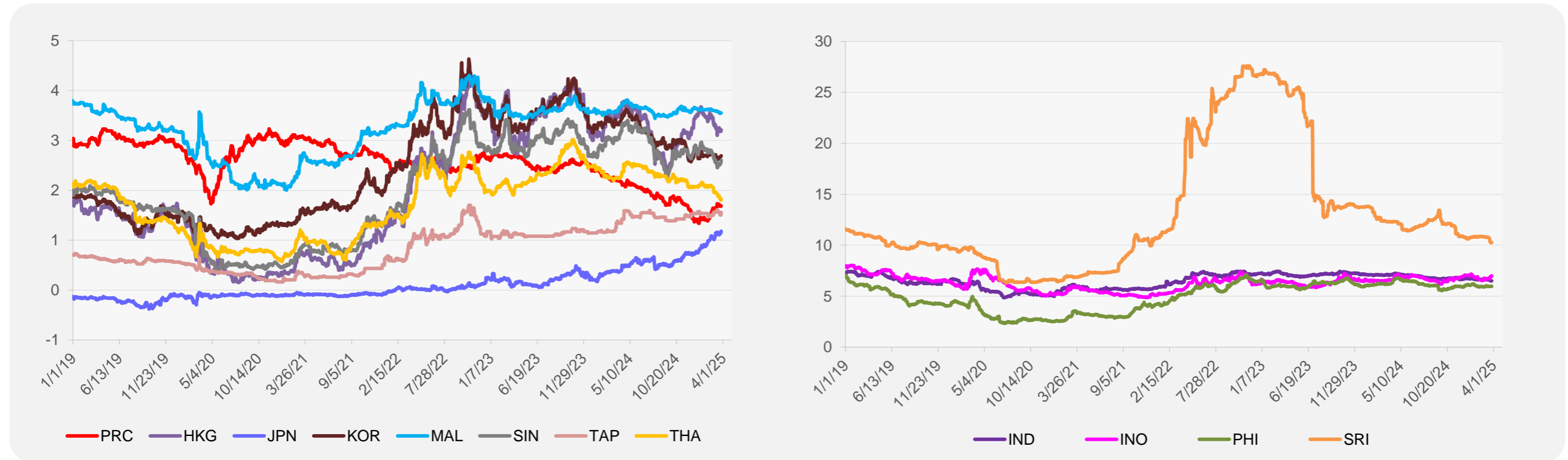
¹ Latest closing price from 19 March 2025.

² Singapore Exchange, Ribbed Smoked Sheet Rubber.

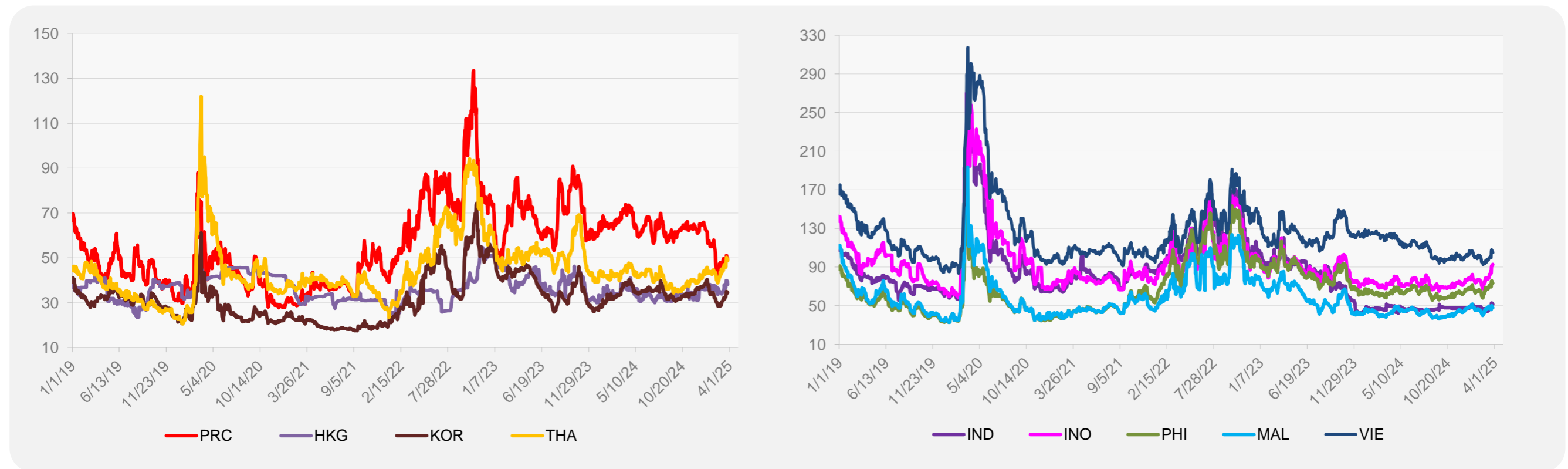


Source: ADB calculations using data from Bloomberg.

5-YEAR LOCAL CURRENCY GOVERNMENT BOND YIELDS (%)



5-YEAR CREDIT DEFAULT SWAP¹



¹ In USD and based on sovereign bonds.
Source: ADB calculations using data from Bloomberg.