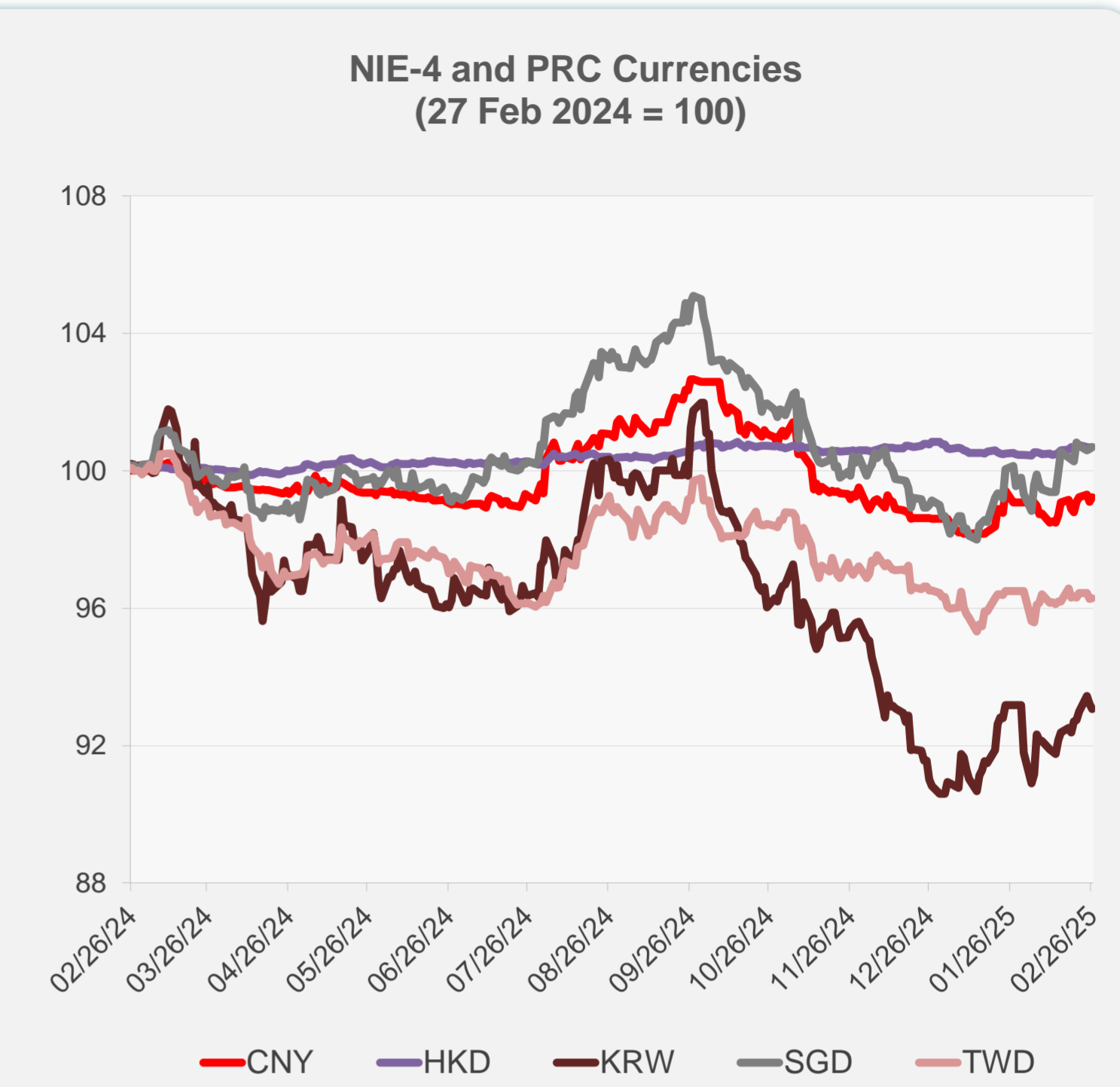
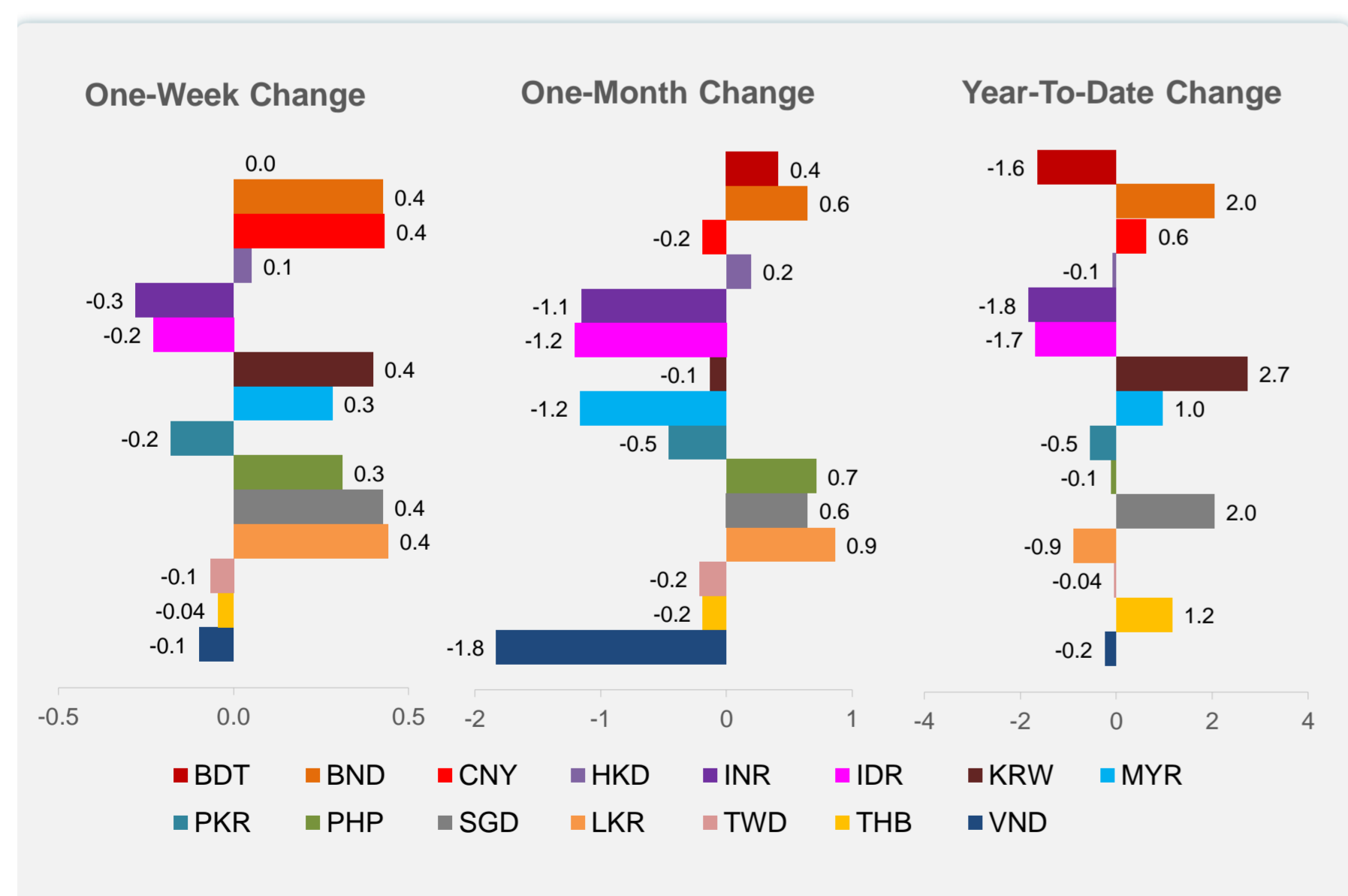
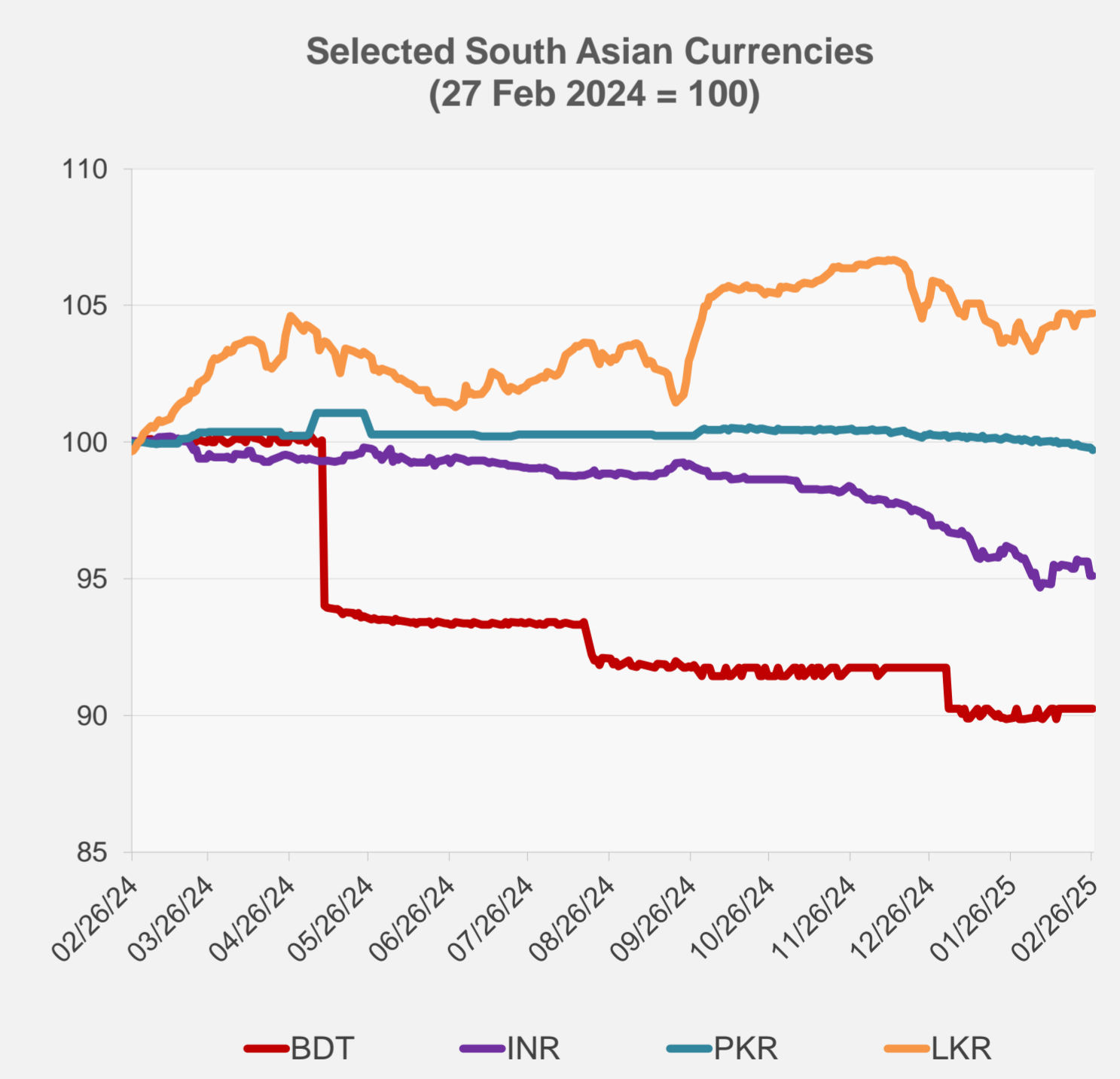
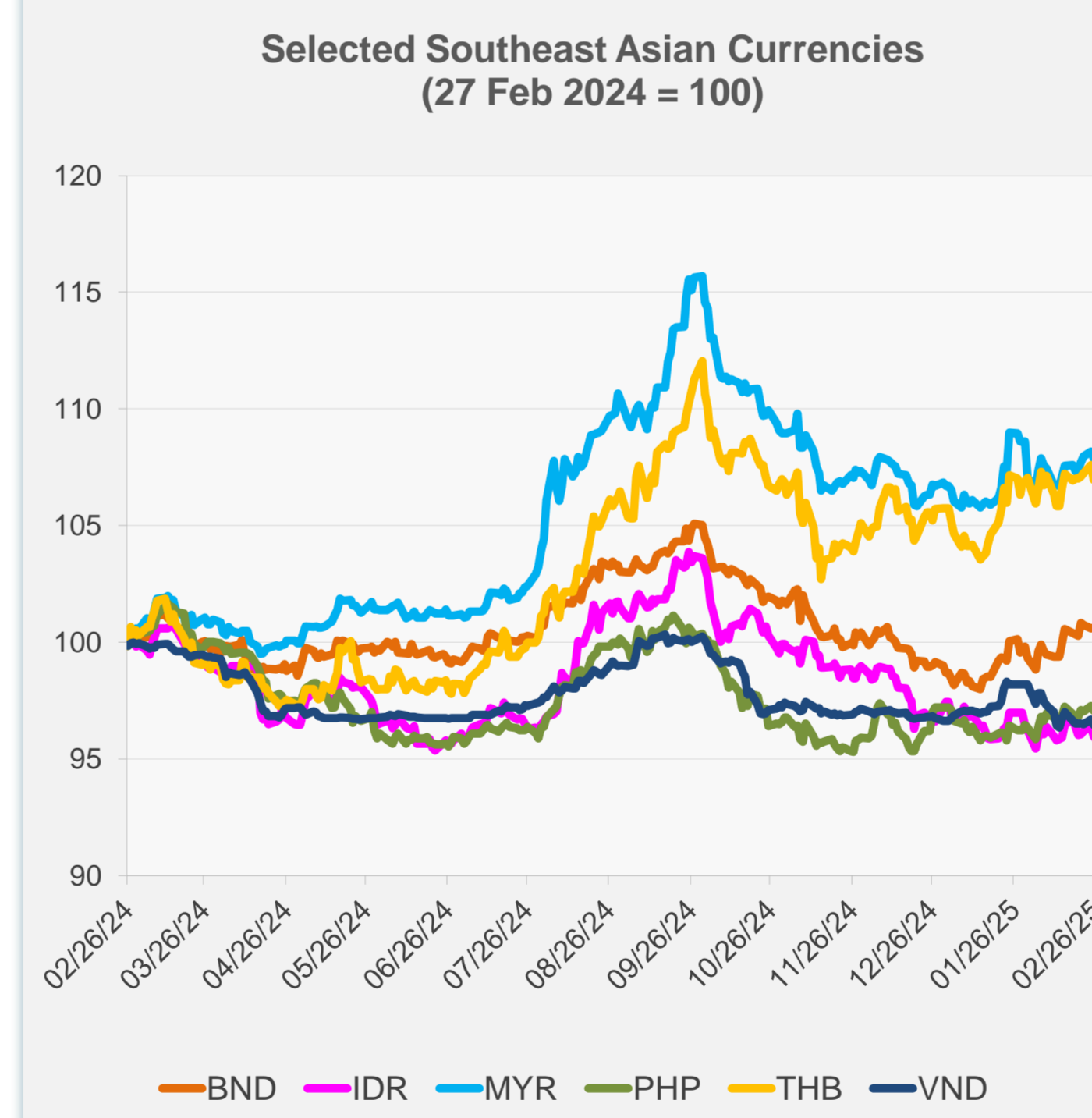


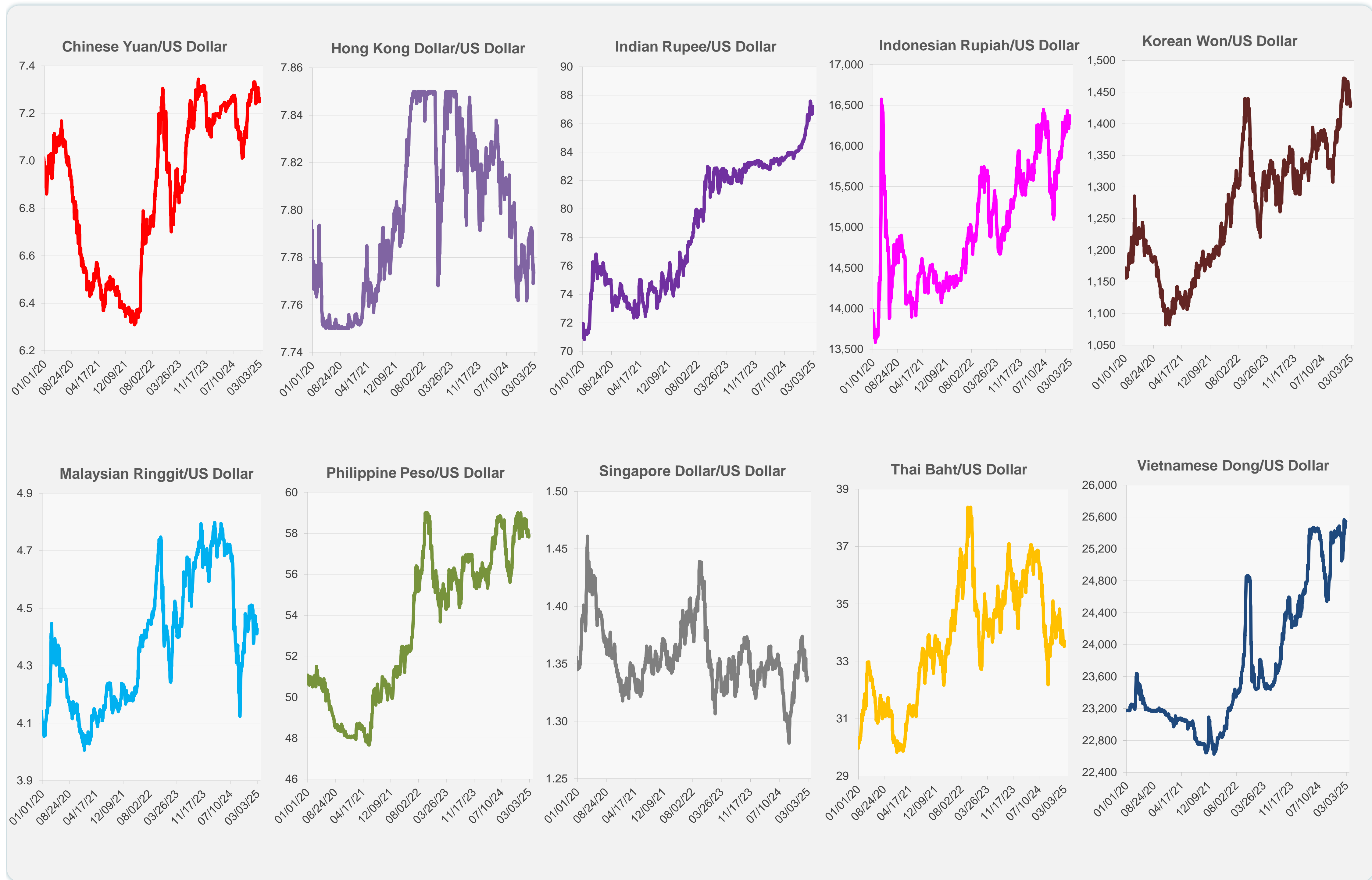
	Latest Closing	% change from Previous Day	% change from 01-Jan-25
Euro	0.95	0.08	1.46
Japanese yen (JPY)	149.51	-0.28	5.12
Bangladeshi taka (BDT)	121.50	0.00	-1.65
Brunei dollar (BND)	1.34	0.06	2.04
Chinese yuan (CNY)	7.25	0.14	0.62
Hong Kong dollar (HKD)	7.77	0.02	-0.07
Indian rupee (INR)	87.21	0.00	-1.82
Indonesian rupiah (IDR)	16,370.00	-0.15	-1.68
Korean won (KRW)	1,433.05	-0.16	2.73
Malaysian ringgit (MYR)	4.43	-0.15	0.96
Pakistan rupee (PKR)	279.88	-0.09	-0.54
Philippine peso (PHP)	57.91	0.04	-0.11
Singapore dollar (SGD)	1.34	0.06	2.04
Sri Lanka rupee (LKR)	295.60	0.00	-0.88
Taipei,China NT dollar (TWD)	32.80	0.01	-0.04
Thai baht (THB)	33.71	0.01	1.16
Vietnamese dong (VND)	25,545.00	-0.04	-0.23



NIE = Newly Industrialized Economies



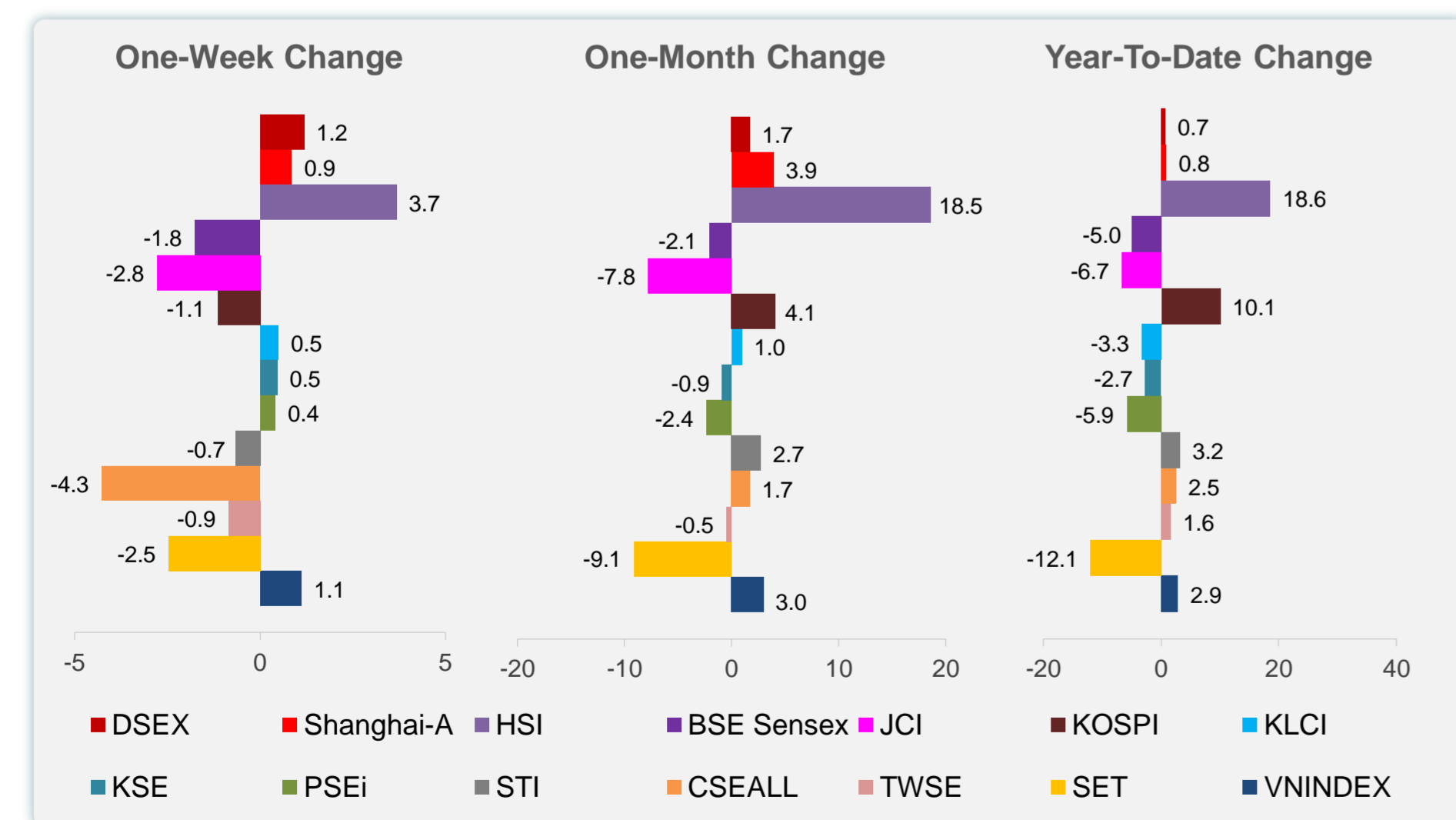
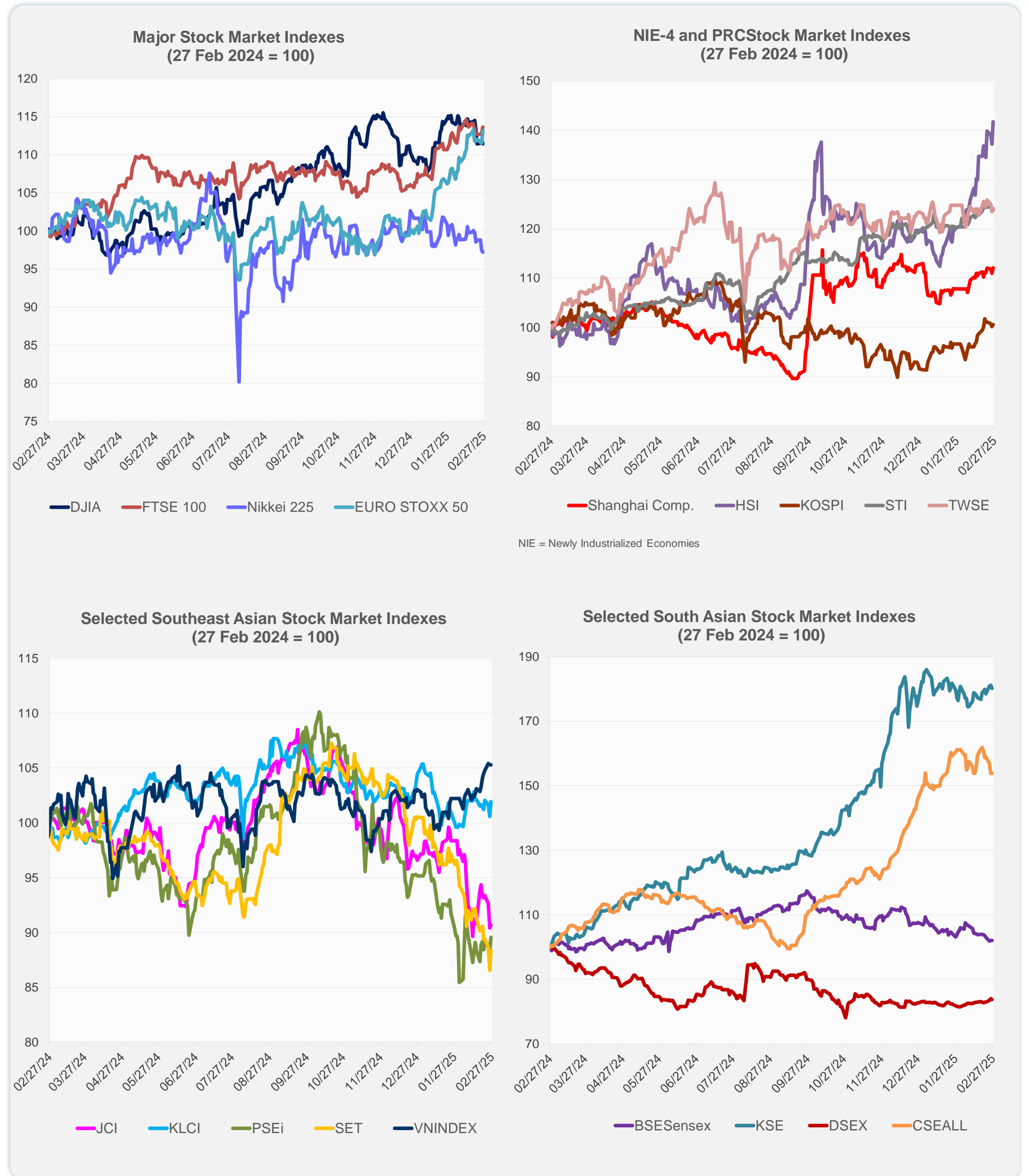
Note: Negative/Decreasing values indicate depreciation of local currency, and positive/increasing values indicate appreciation.
Source: ADB calculations using data from Haver Analytics.



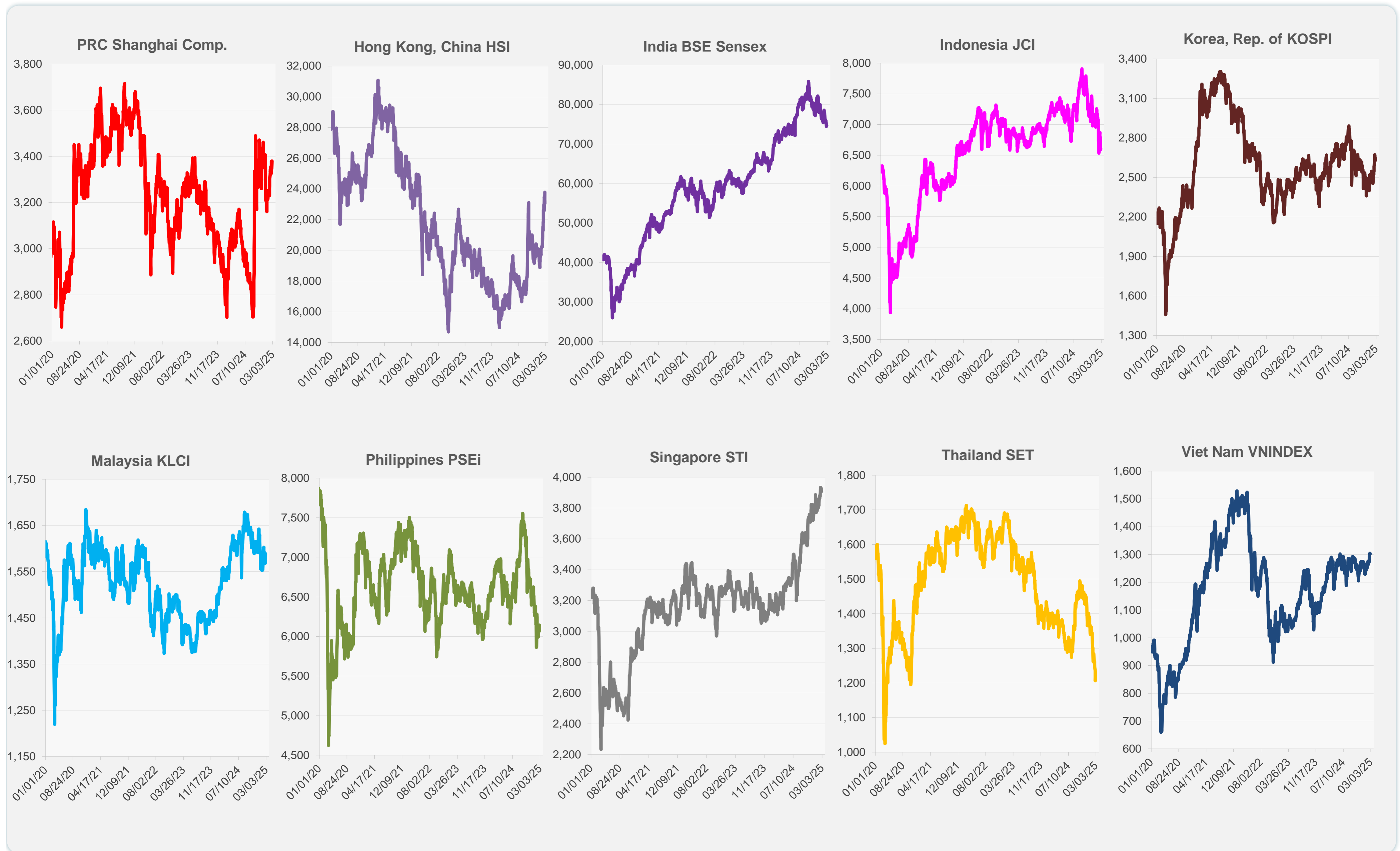
Source: Haver Analytics.

Daily Market Watch
STOCK INDEXES

	Latest Closing	% change from Previous Day	% change from 01-Jan-25
US Dow Jones Ind Avg	43,433.12	-0.43	2.09
US NASDAQ	19,075.26	0.26	-1.22
US S&P 500	5,956.06	0.01	1.27
UK FTSE 100	8,731.46	0.72	6.83
EURO STOXX 50	5,527.99	1.47	12.91
Japan NIKKEI 225	38,142.37	-0.25	-4.39
Bangladesh DSEX	5,253.79	-0.27	0.68
PRC Shanghai Comp.	3,380.21	1.02	0.85
Hong Kong, China HSI	23,787.93	3.27	18.58
India BSE Sensex	74,602.12	0.00	-4.97
Indonesia JCI	6,606.18	0.29	-6.69
Korea, Rep. of KOSPI	2,641.09	0.41	10.07
Malaysia KLCI	1,588.71	1.32	-3.26
Pakistan KSE 100	113,862.32	-0.58	-2.69
Philippines PSEi	6,144.96	1.33	-5.88
Singapore STI	3,908.05	-0.20	3.18
Sri Lanka CSEALL	16,345.01	0.00	2.51
Taipei, China TWSE	23,402.55	0.50	1.60
Thailand SET	1,231.14	2.05	-12.07
Viet Nam VNINDEX	1,302.96	-0.02	2.86



Sources: ADB calculations using data from CEIC Data Company and Haver Analytics.



Sources: CEIC Data Company and Haver Analytics.

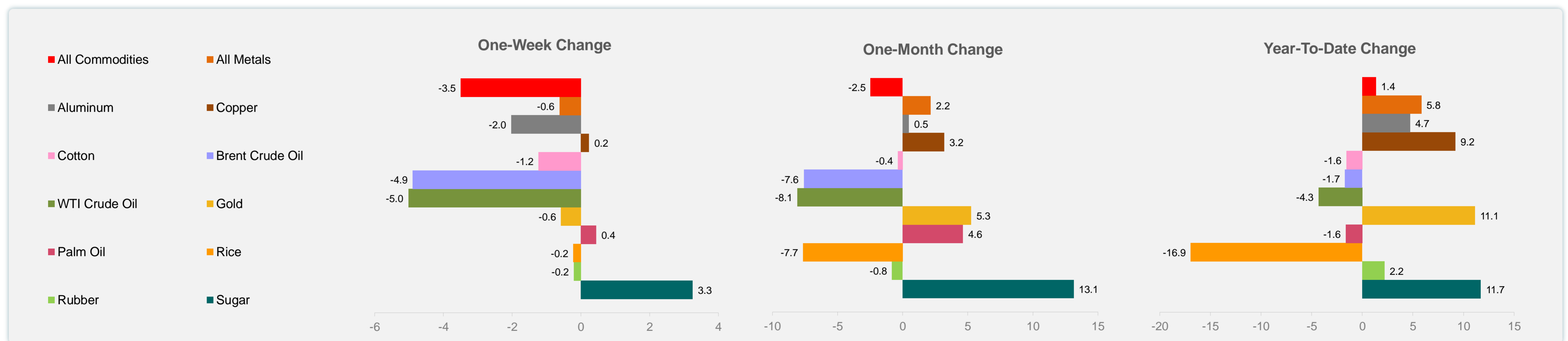
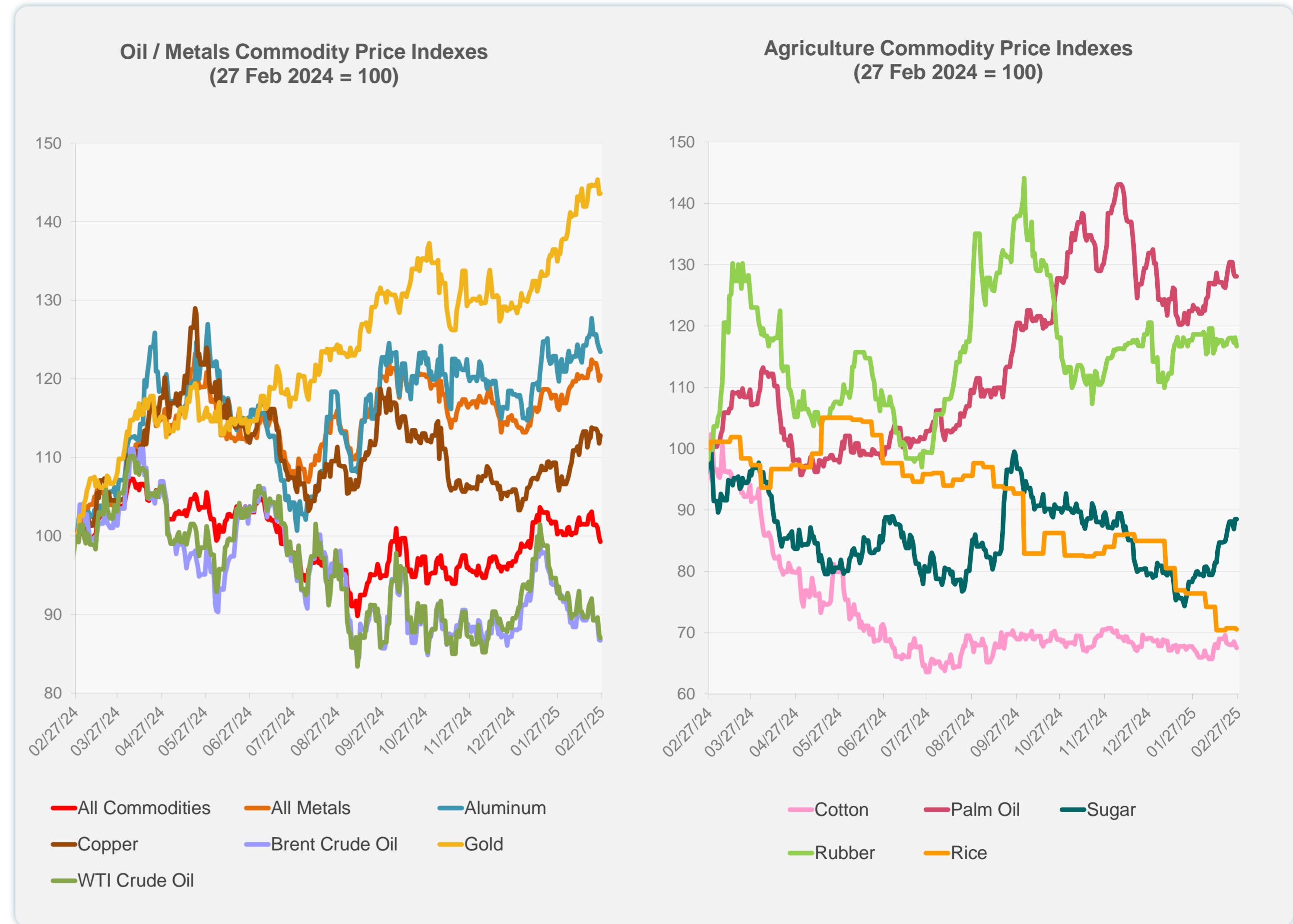
Daily Market Watch
COMMODITY PRICES

27 February 2025, 9:00 AM Manila

	Unit	Latest Closing	% change from Previous Day	% change from 01-Jan-25
S&P All Commodities	US\$	557.09	-0.51	1.35
S&P All Metals	US\$	325.34	0.53	5.84
Aluminum	US\$/metric ton	2,646.28	-0.29	4.73
Copper	US\$/metric ton	9,448.27	0.90	9.19
Cotton	US cents/lb	64.87	-0.76	-1.56
Brent Crude Oil	US\$/barrel	72.84	-0.07	-1.71
WTI Crude Oil	US\$/barrel	68.62	-0.45	-4.32
Gold	US\$/troy oz	2,916.39	0.05	11.12
Palm Oil	US\$/metric tonne	1,082.12	-0.04	-1.64
Rice ¹	US\$/metric ton	446.00	-0.22	-16.95
Rubber ²	US\$/kg	242.00	-1.18	2.20
Sugar	US cents/lb	20.33	0.00	11.70

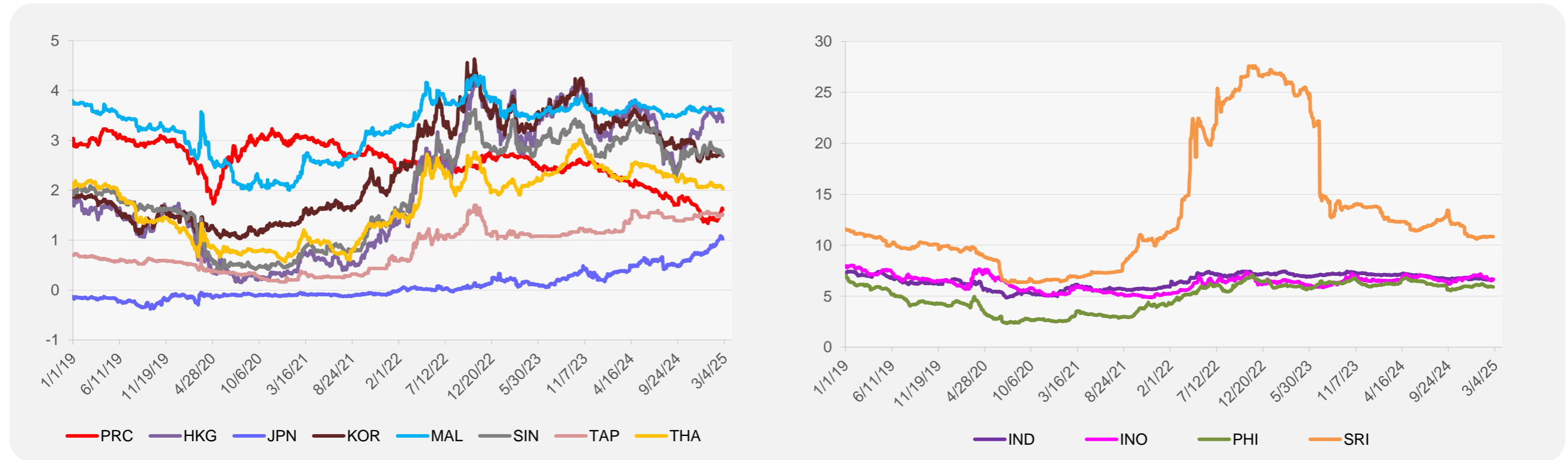
¹ Latest closing price from 26 February 2025.

² Singapore Exchange, Ribbed Smoked Sheet Rubber.

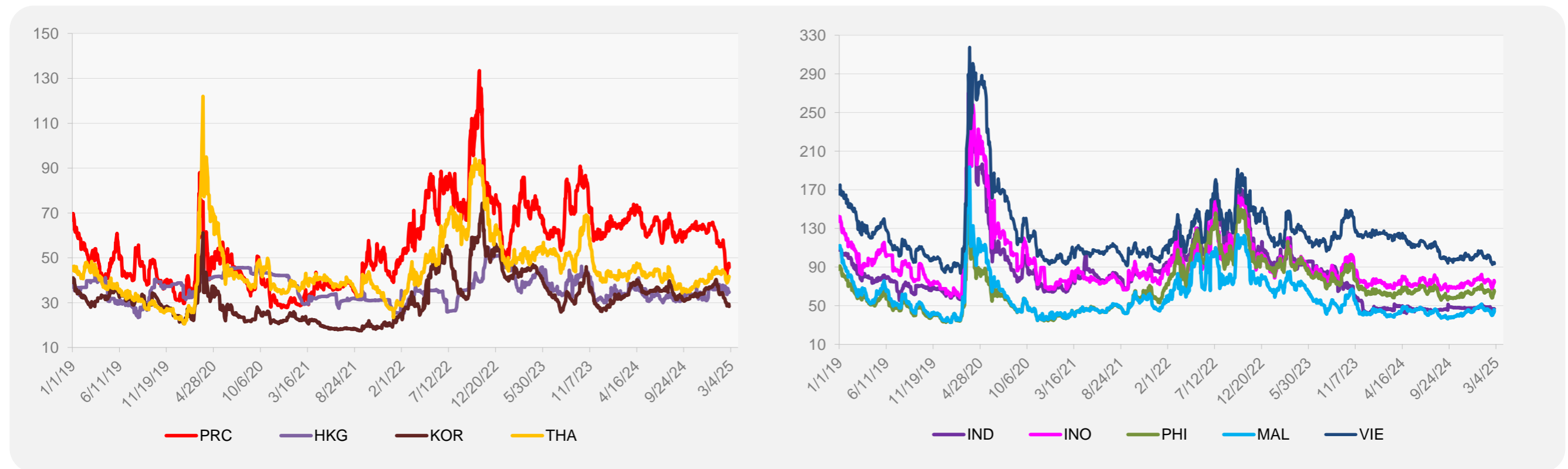


Source: ADB calculations using data from Bloomberg.

5-YEAR LOCAL CURRENCY GOVERNMENT BOND YIELDS (%)



5-YEAR CREDIT DEFAULT SWAP¹



¹ In USD and based on sovereign bonds.
Source: ADB calculations using data from Bloomberg.