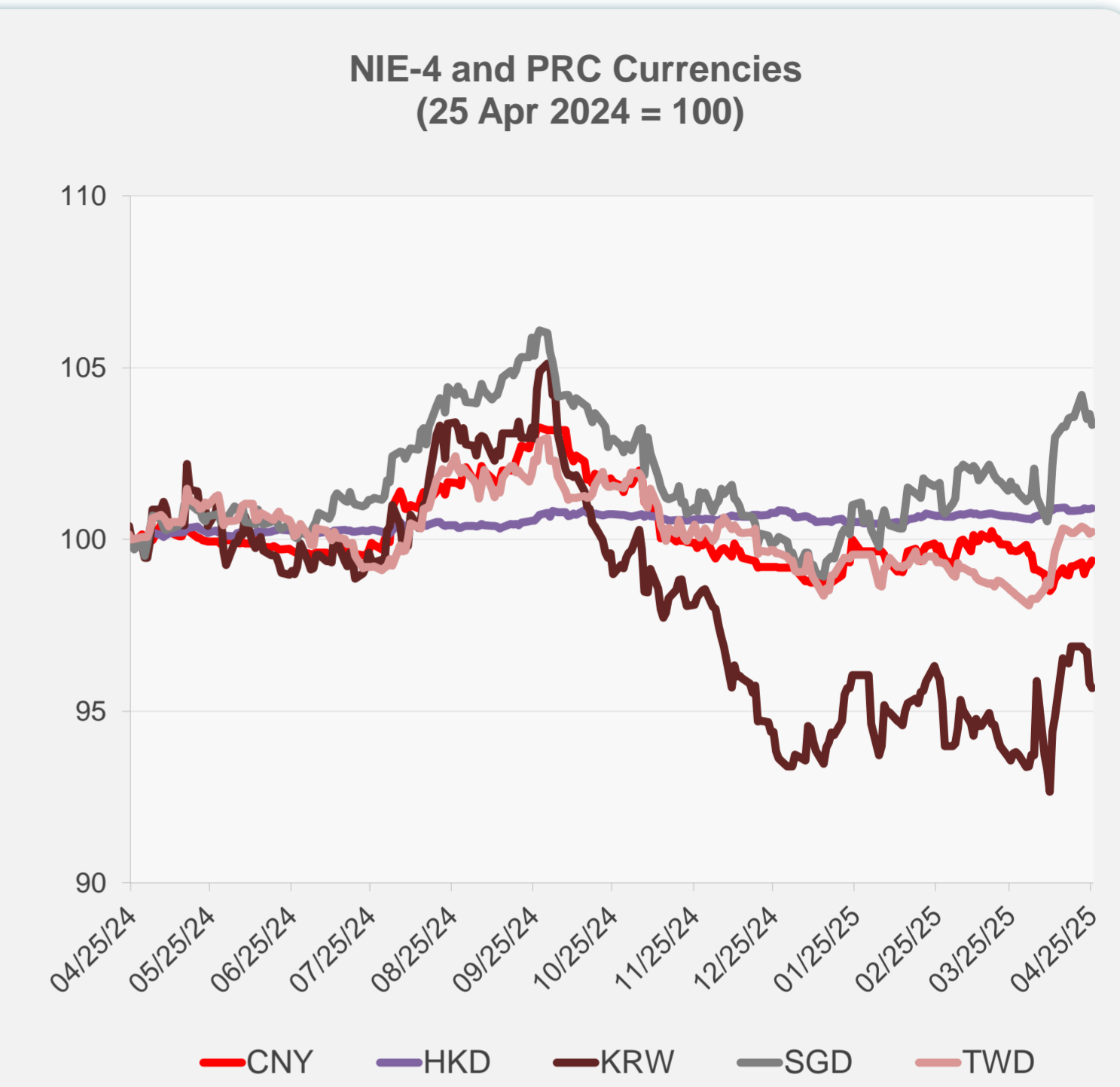
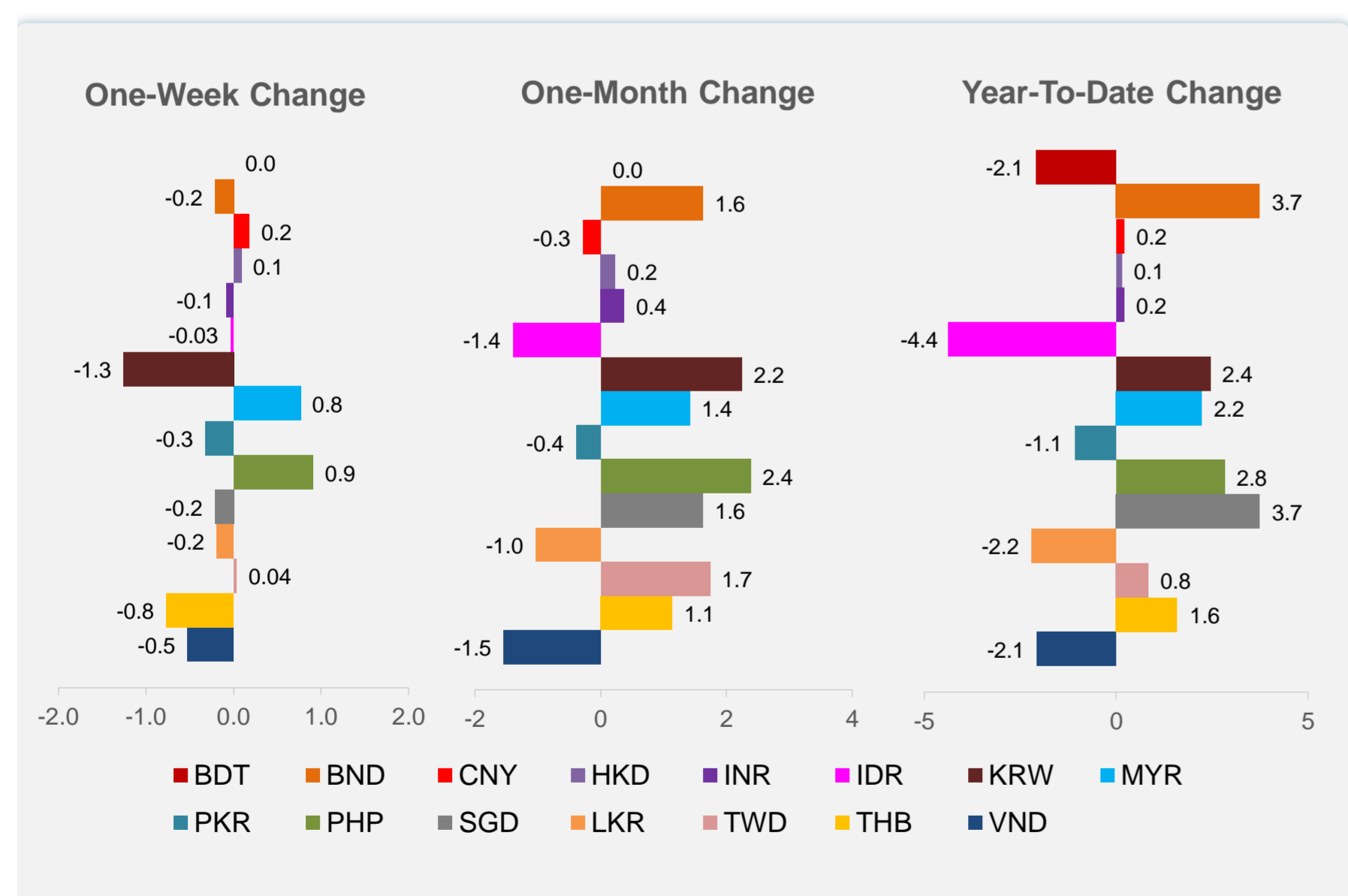
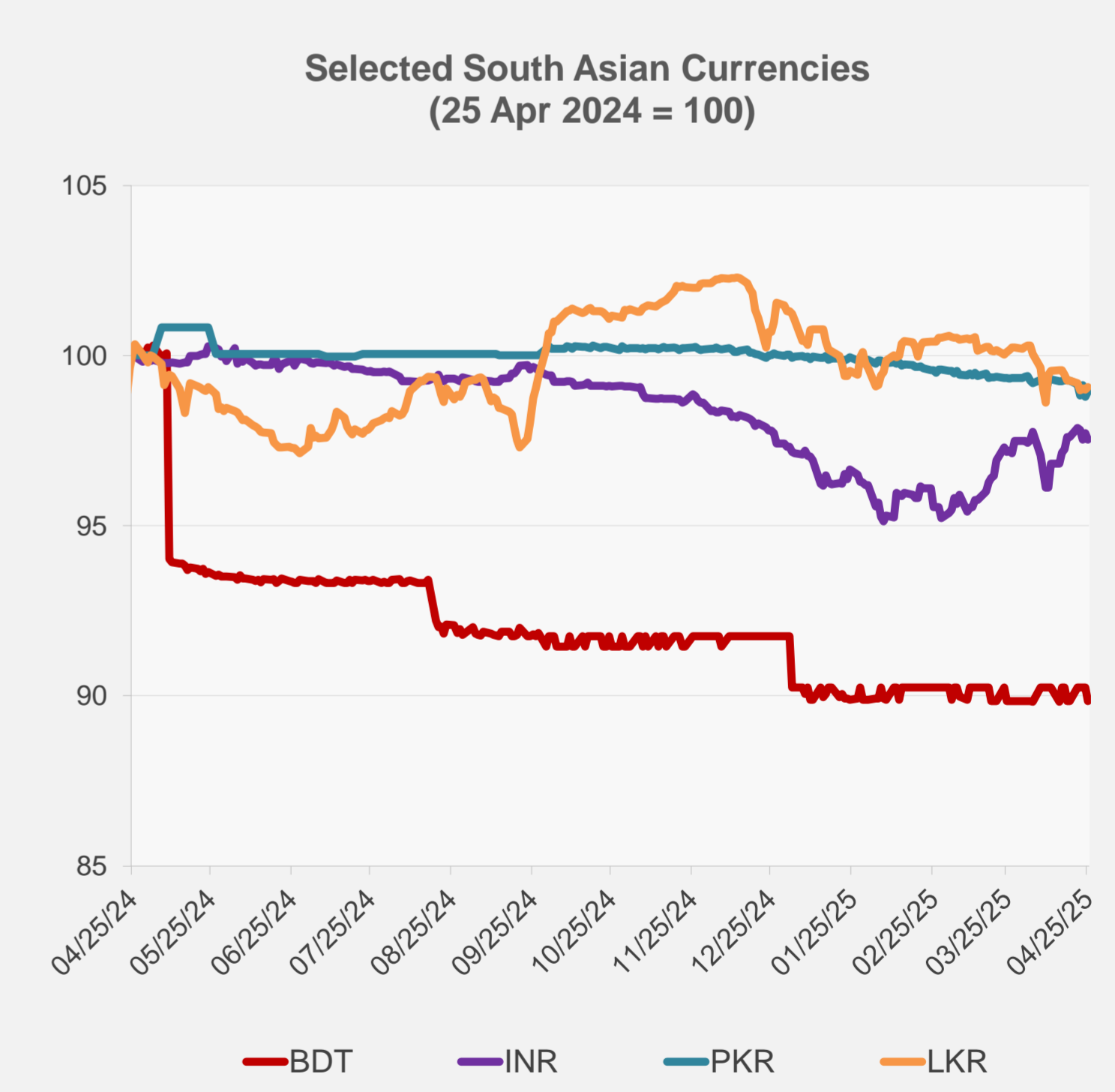
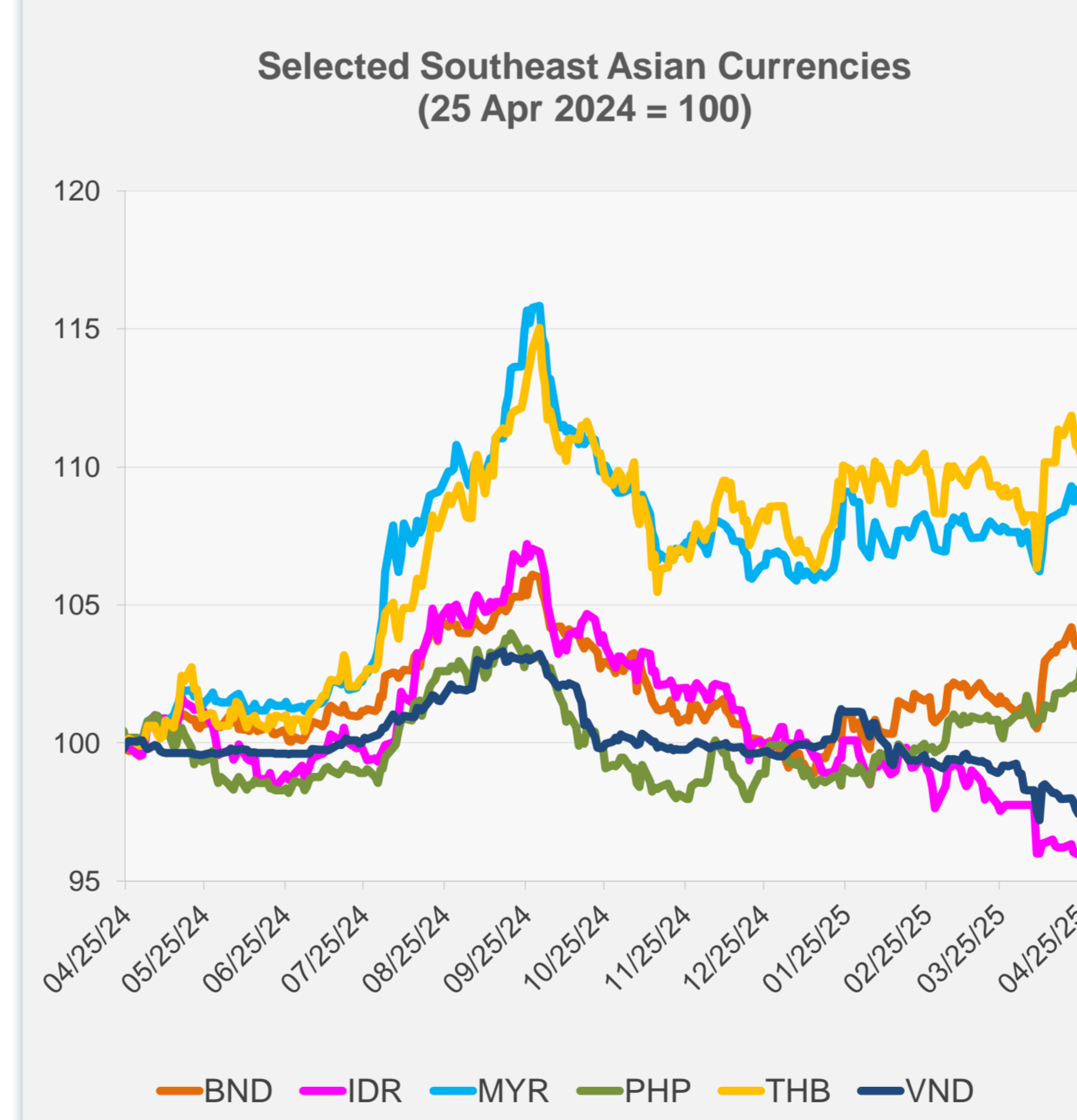


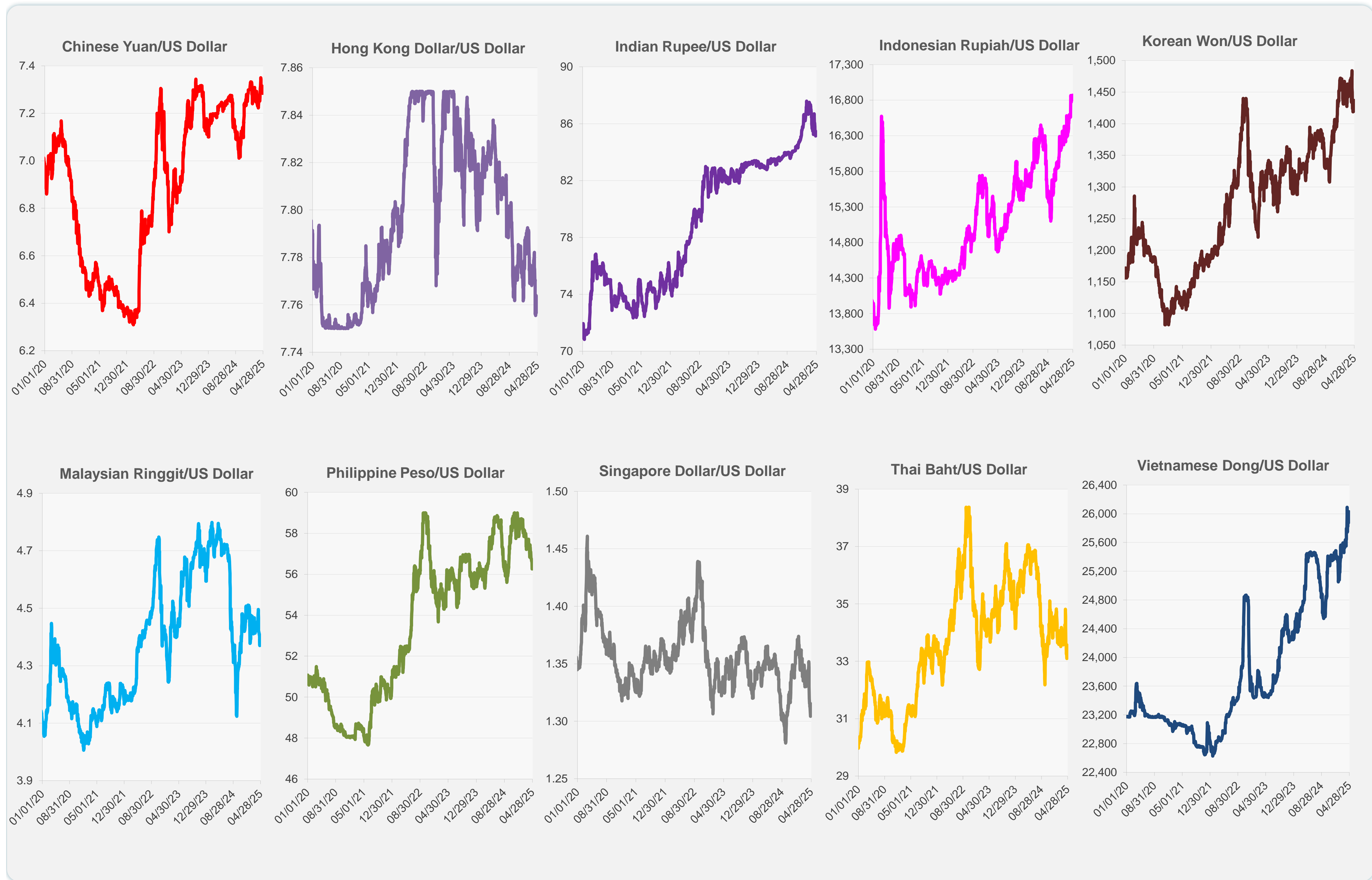
	Latest Closing	% change from Previous Day	% change from 01-Jan-25
Euro	0.88	-0.05	9.79
Japanese yen (JPY)	143.98	-1.04	9.16
Bangladeshi taka (BDT)	122.05	-0.45	-2.09
Brunei dollar (BND)	1.32	-0.30	3.74
Chinese yuan (CNY)	7.28	0.13	0.21
Hong Kong dollar (HKD)	7.76	0.03	0.14
Indian rupee (INR)	85.44	-0.20	0.20
Indonesian rupiah (IDR)	16,830.00	0.24	-4.37
Korean won (KRW)	1,437.00	-0.14	2.45
Malaysian ringgit (MYR)	4.37	-0.02	2.23
Pakistan rupee (PKR)	281.40	0.17	-1.07
Philippine peso (PHP)	56.26	0.55	2.82
Singapore dollar (SGD)	1.32	-0.30	3.74
Sri Lanka rupee (LKR)	299.60	0.07	-2.20
Taipei,China NT dollar (TWD)	32.51	0.06	0.84
Thai baht (THB)	33.56	-0.36	1.59
Vietnamese dong (VND)	26,021.50	0.03	-2.06



NIE = Newly Industrialized Economies



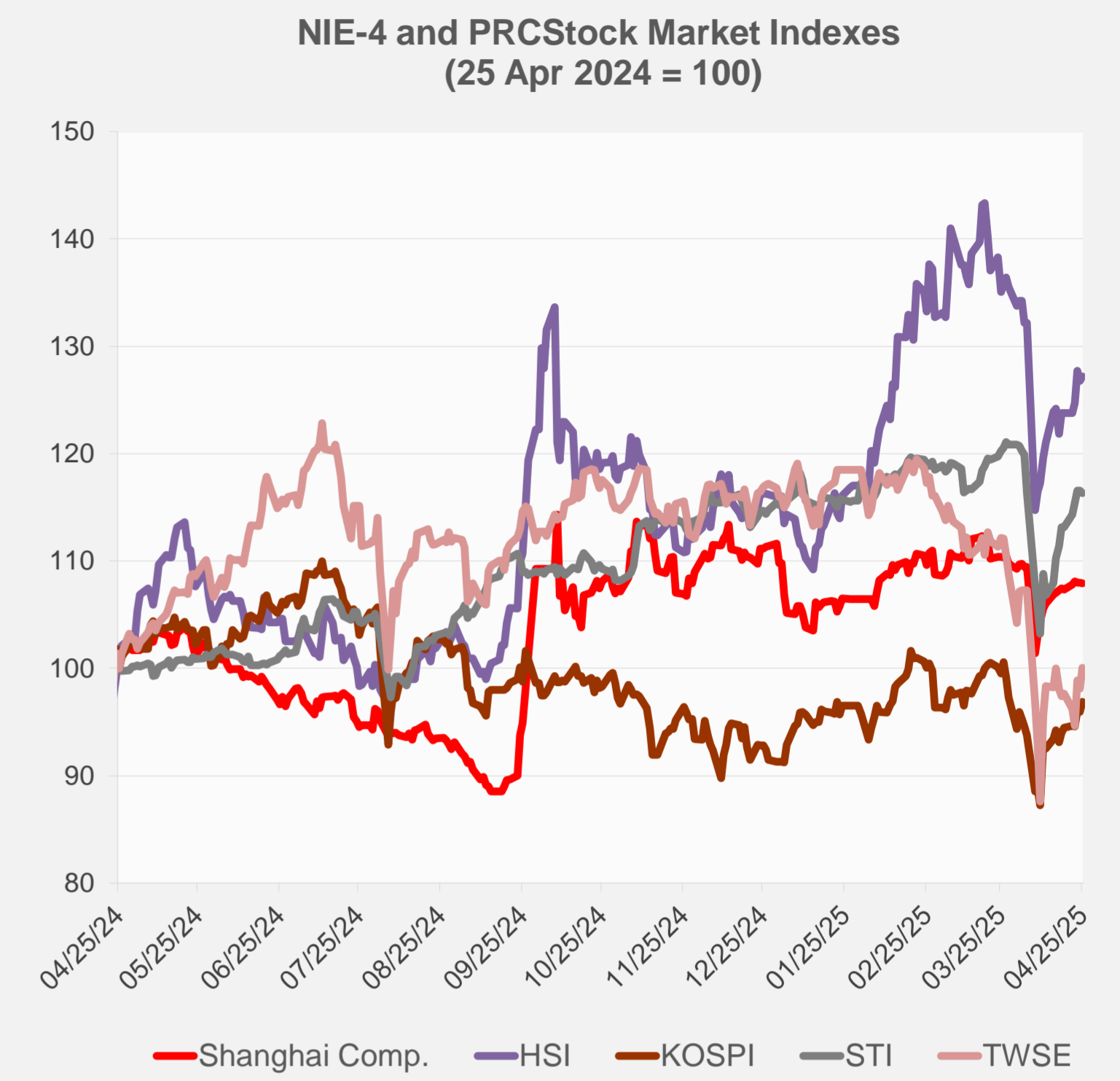
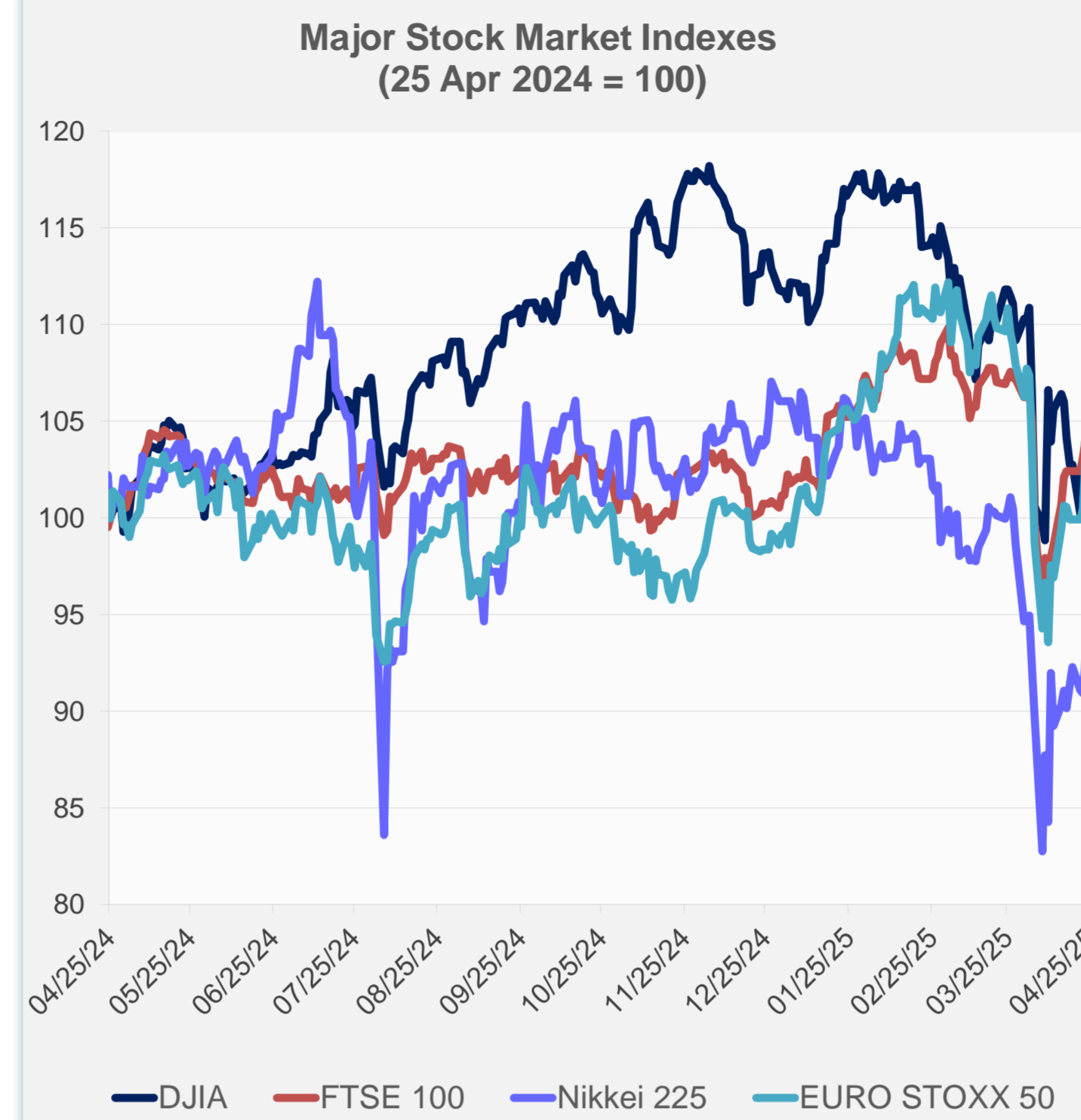
Note: Negative/Decreasing values indicate depreciation of local currency, and positive/increasing values indicate appreciation.  
Source: ADB calculations using data from Haver Analytics.



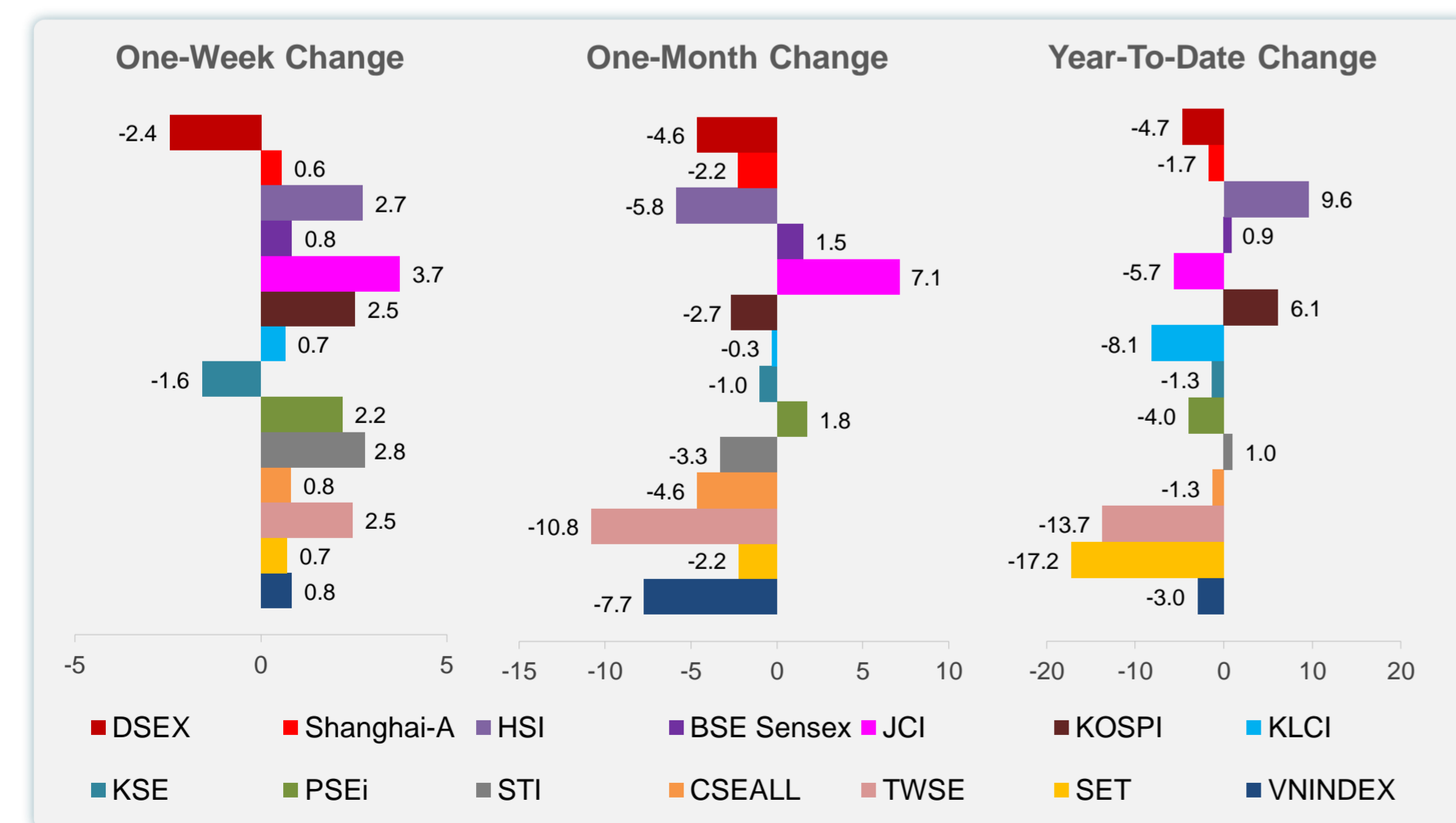
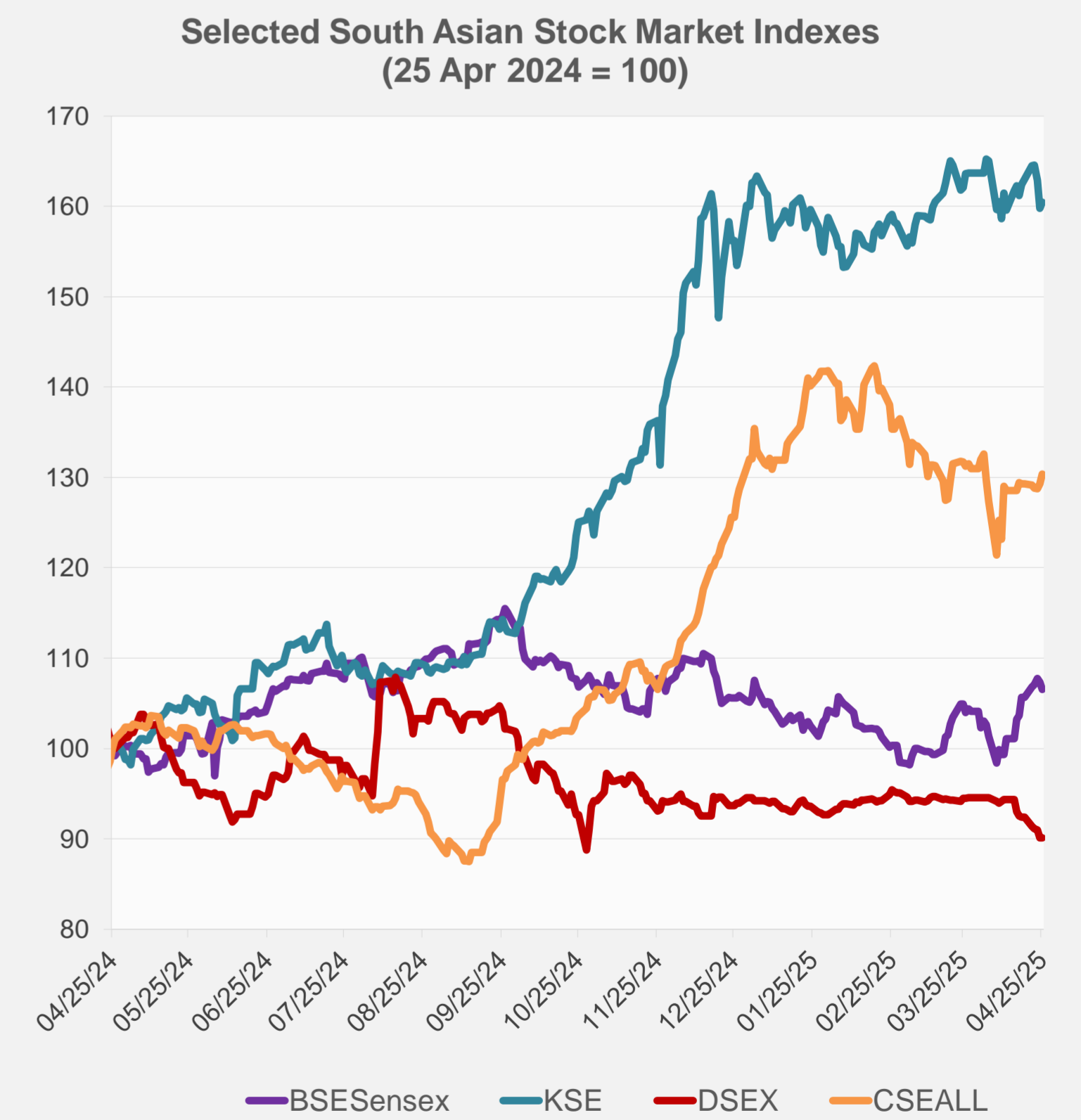
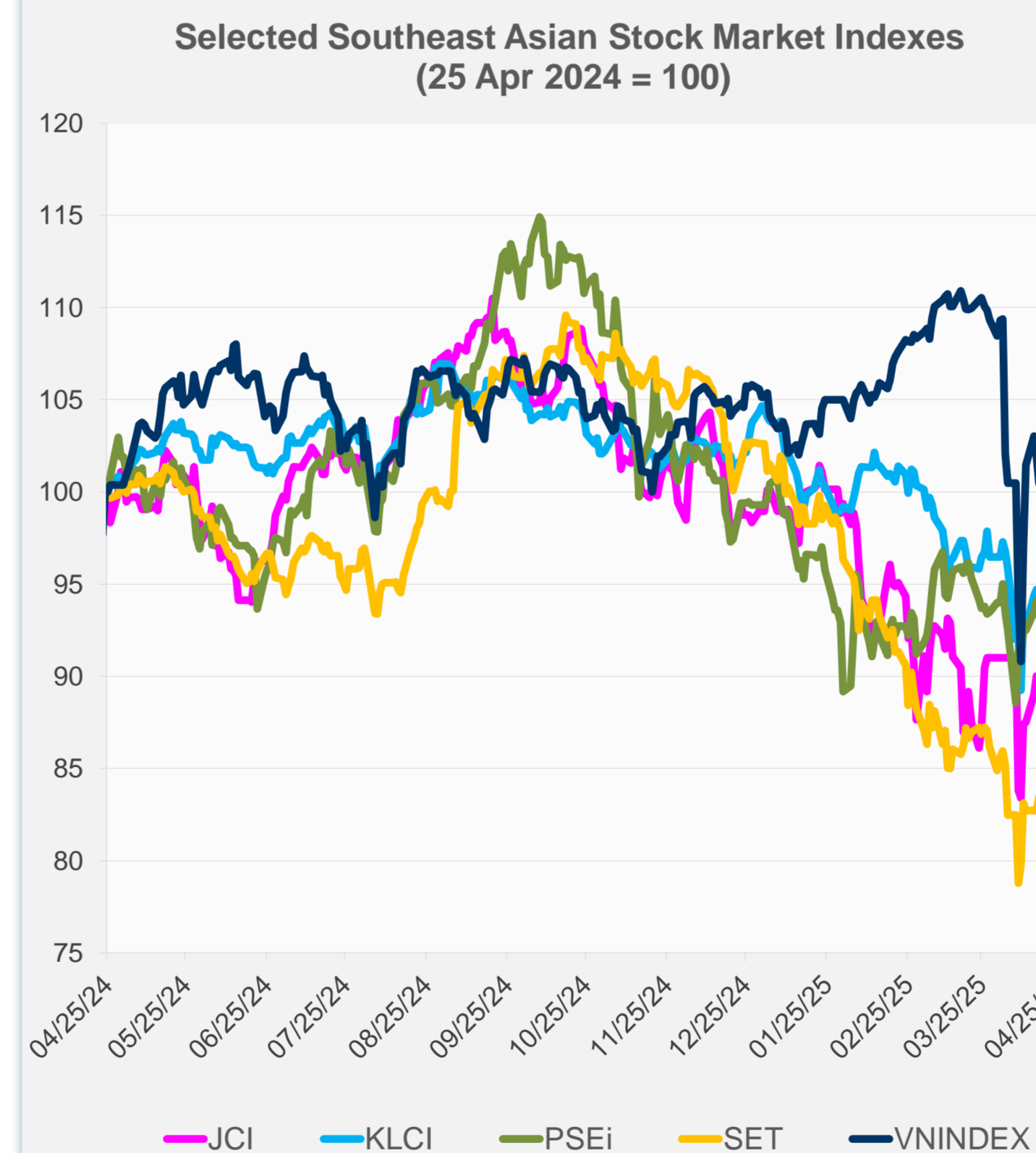
Source: Haver Analytics.

Daily Market Watch  
**STOCK INDEXES**

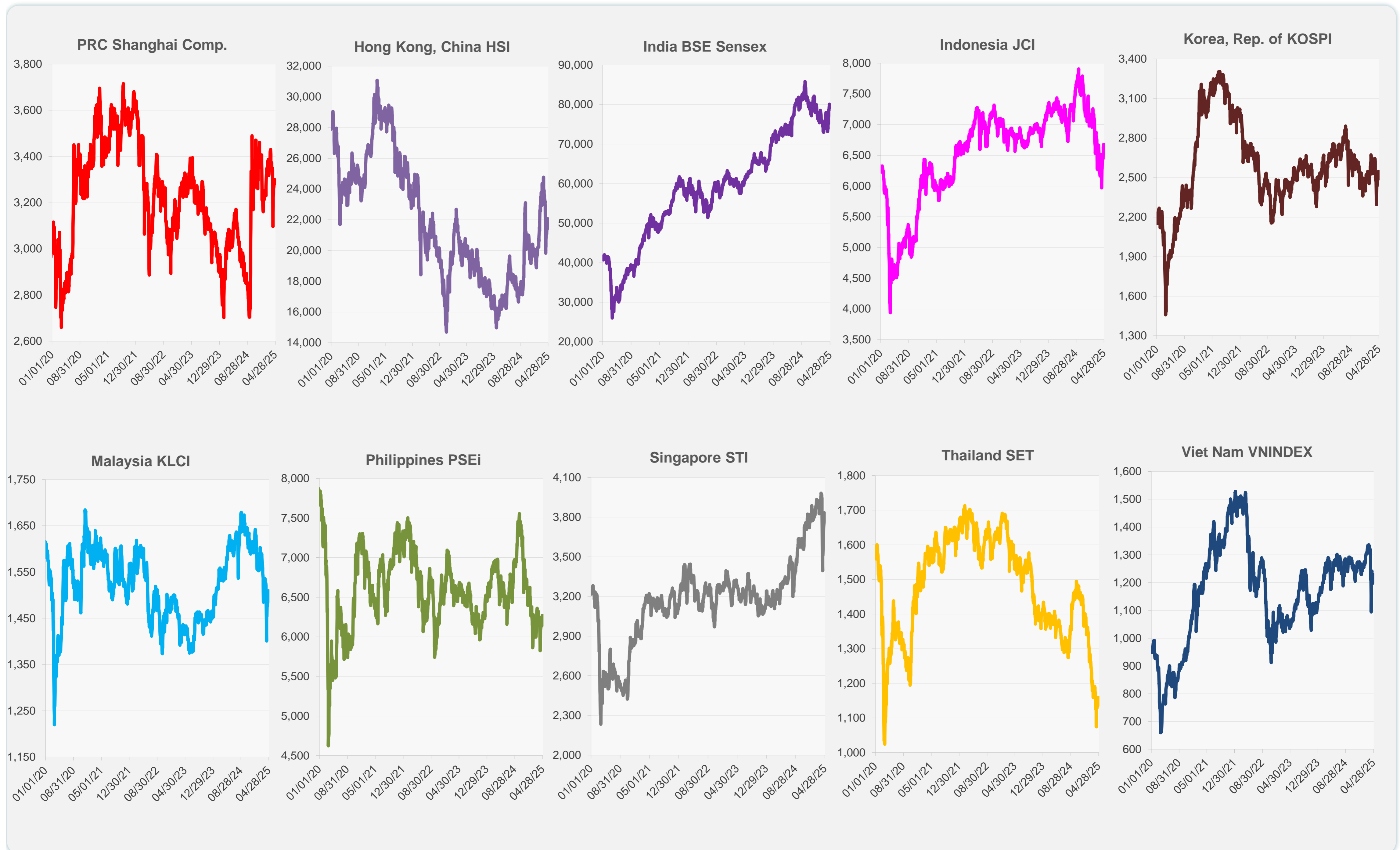
	Latest Closing	% change from Previous Day	% change from 01-Jan-25
US Dow Jones Ind Avg	40,113.50	0.05	-5.71
US NASDAQ	17,382.94	1.26	-9.98
US S&P 500	5,525.21	0.74	-6.06
UK FTSE 100	8,415.25	0.09	2.96
EURO STOXX 50	5,154.12	0.77	5.27
Japan NIKKEI 225	35,705.74	1.90	-10.50
Bangladesh DSEX	4,972.60	0.00	-4.71
PRC Shanghai Comp.	3,295.06	-0.07	-1.69
Hong Kong, China HSI	21,980.74	0.32	9.58
India BSE Sensex	79,212.53	-0.74	0.90
Indonesia JCI	6,678.92	0.99	-5.66
Korea, Rep. of KOSPI	2,546.30	0.95	6.12
Malaysia KLCI	1,509.20	0.18	-8.11
Pakistan KSE 100	115,469.34	0.39	-1.32
Philippines PSEi	6,268.75	1.79	-3.98
Singapore STI	3,823.78	-0.21	0.96
Sri Lanka CSEALL	15,742.04	0.81	-1.27
Taipei, China TWSE	19,872.73	2.02	-13.73
Thailand SET	1,159.00	1.06	-17.23
Viet Nam VNINDEX	1,229.23	0.48	-2.96



NIE = Newly Industrialized Economies



Sources: ADB calculations using data from CEIC Data Company and Haver Analytics.



Sources: CEIC Data Company and Haver Analytics.

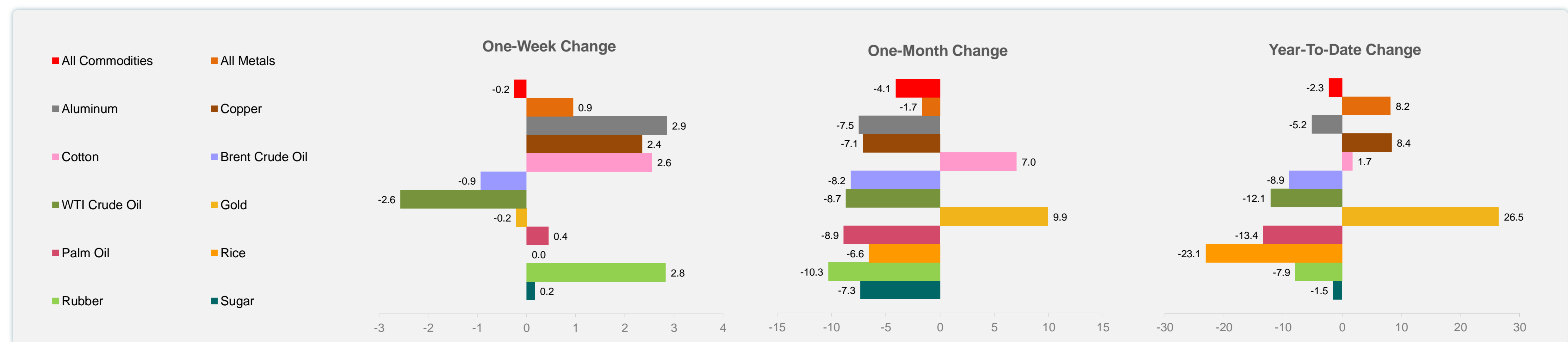
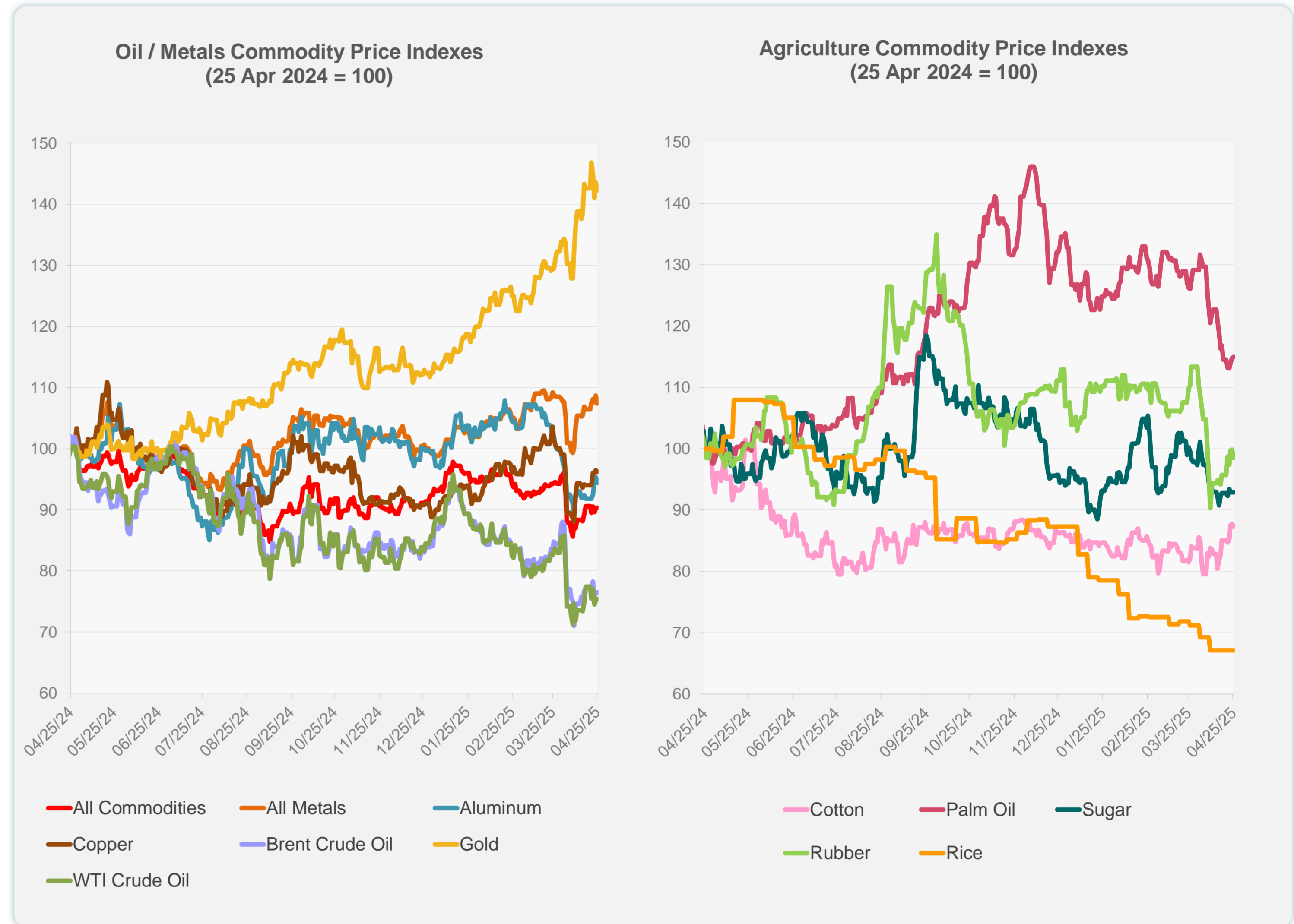
Daily Market Watch  
**COMMODITY PRICES**

28 April 2025, 9:00 AM Manila

	Unit	Latest Closing	% change from Previous Day	% change from 01-Jan-25
S&P All Commodities	US\$	537.21	0.13	-2.26
S&P All Metals	US\$	332.56	-1.16	8.19
Aluminum	US\$/metric ton	2,396.30	-0.96	-5.16
Copper	US\$/metric ton	9,376.41	-0.24	8.36
Cotton	US cents/lb	67.05	-0.55	1.75
Brent Crude Oil	US\$/barrel	67.49	0.33	-8.93
WTI Crude Oil	US\$/barrel	63.02	0.37	-12.13
Gold	US\$/troy oz	3,319.72	-0.89	26.49
Palm Oil	US\$/metric tonne	952.74	0.20	-13.40
Rice <sup>1</sup>	US\$/metric ton	413.00	0.00	-23.09
Rubber <sup>2</sup>	US\$/kg	218.00	-1.36	-7.94
Sugar	US cents/lb	17.92	0.00	-1.54

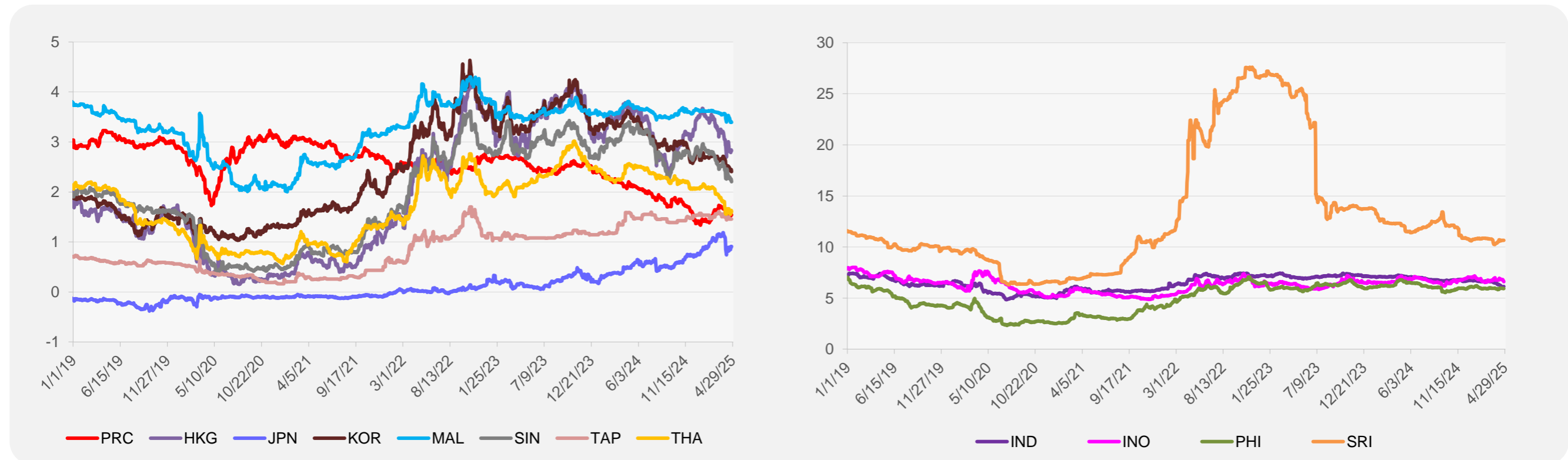
<sup>1</sup> Latest closing price from 9 April 2025.

<sup>2</sup> Singapore Exchange, Ribbed Smoked Sheet Rubber.

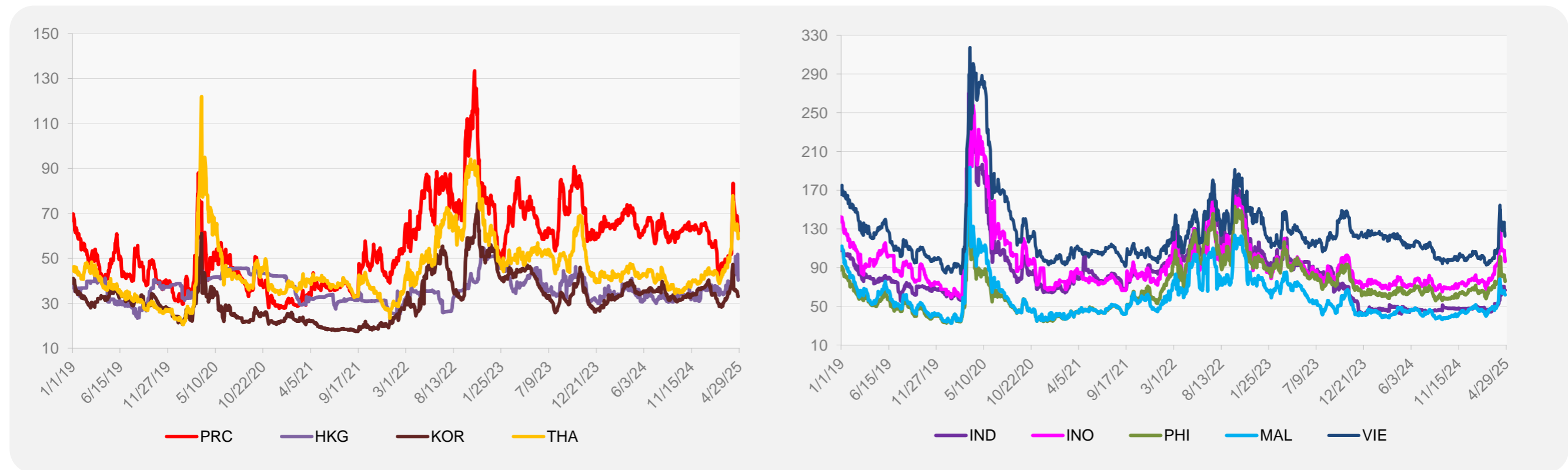


Source: ADB calculations using data from Bloomberg.

### 5-YEAR LOCAL CURRENCY GOVERNMENT BOND YIELDS (%)



### 5-YEAR CREDIT DEFAULT SWAP<sup>1</sup>



<sup>1</sup> In USD and based on sovereign bonds.  
Source: ADB calculations using data from Bloomberg.