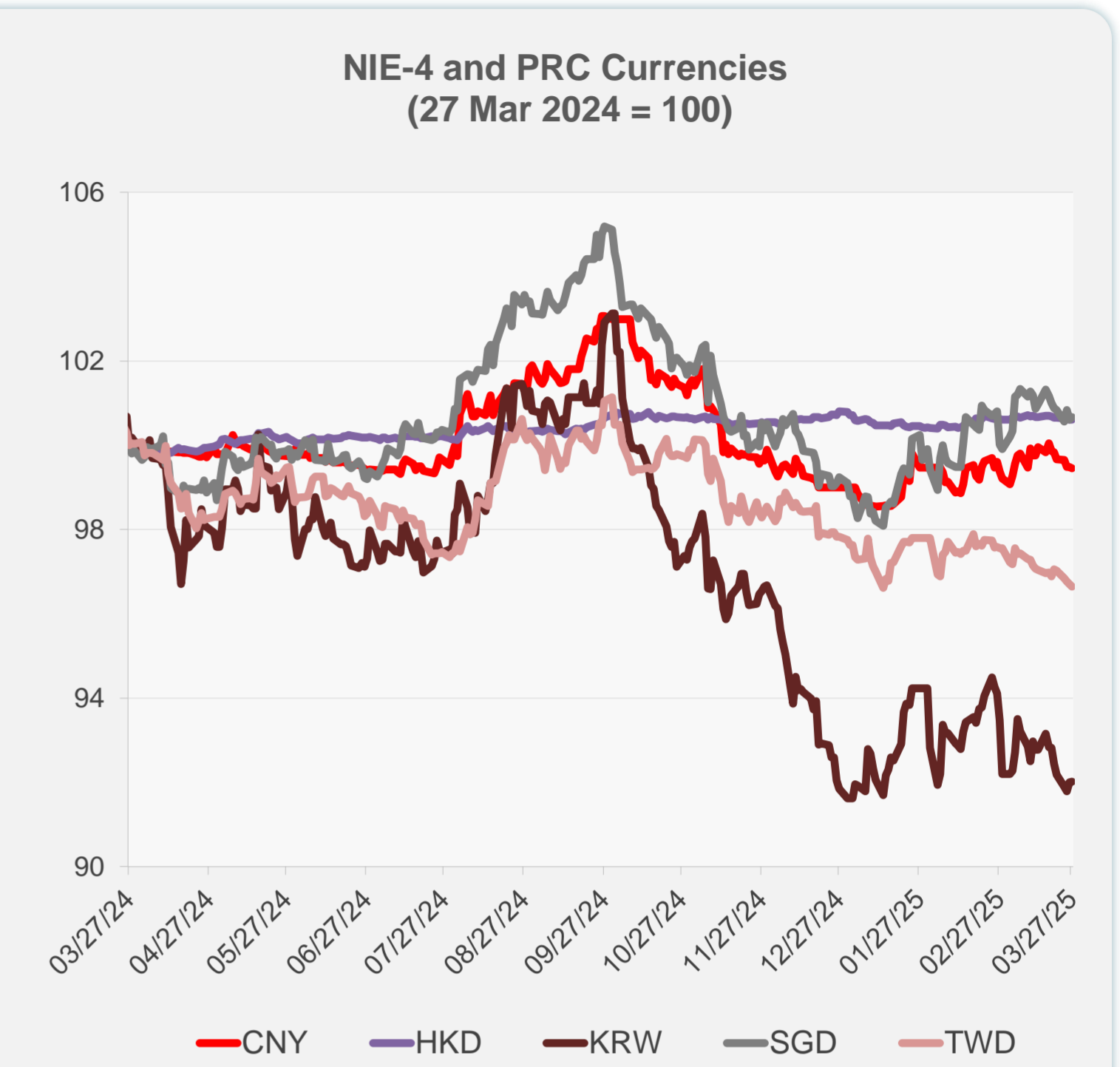
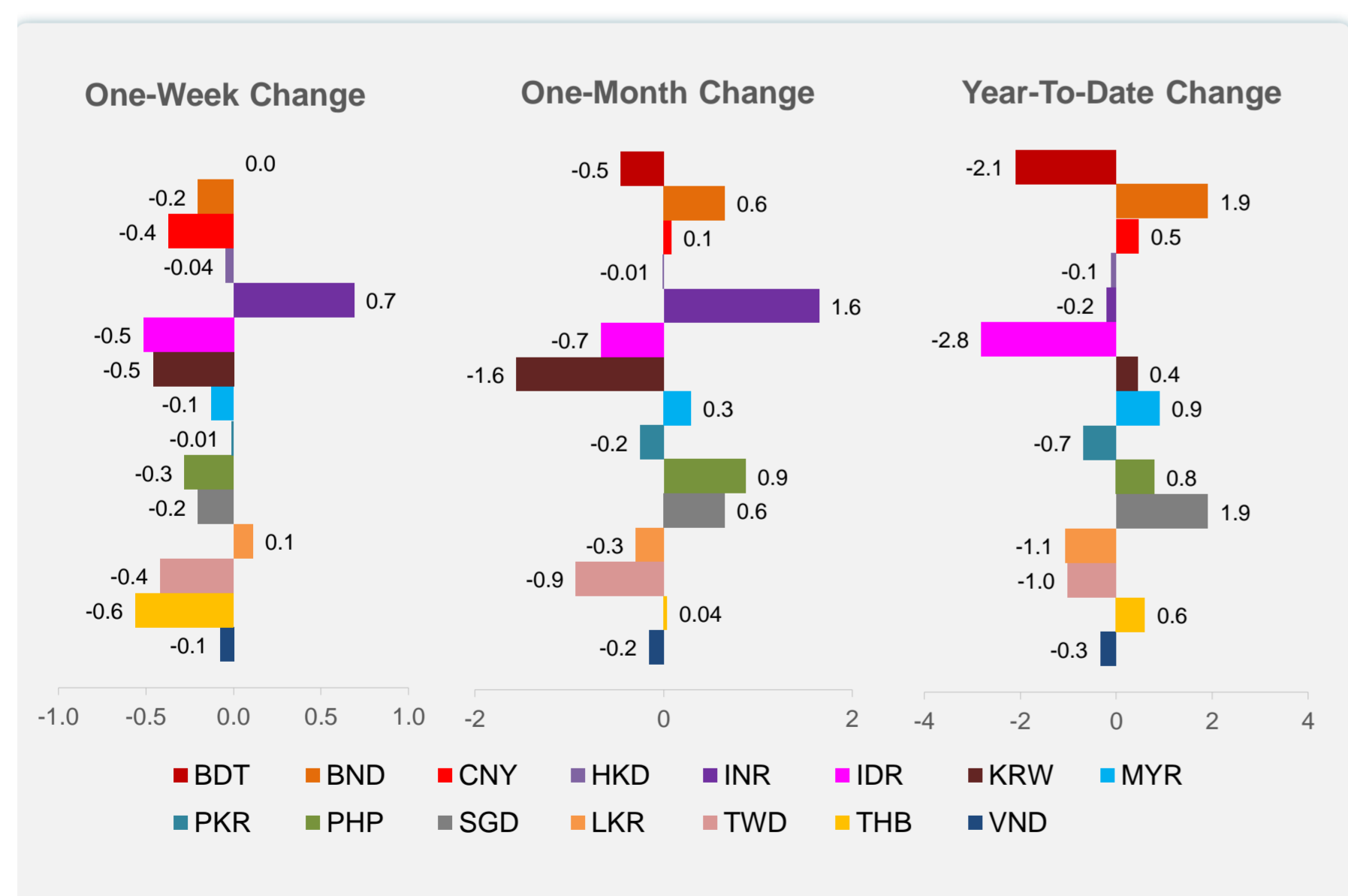
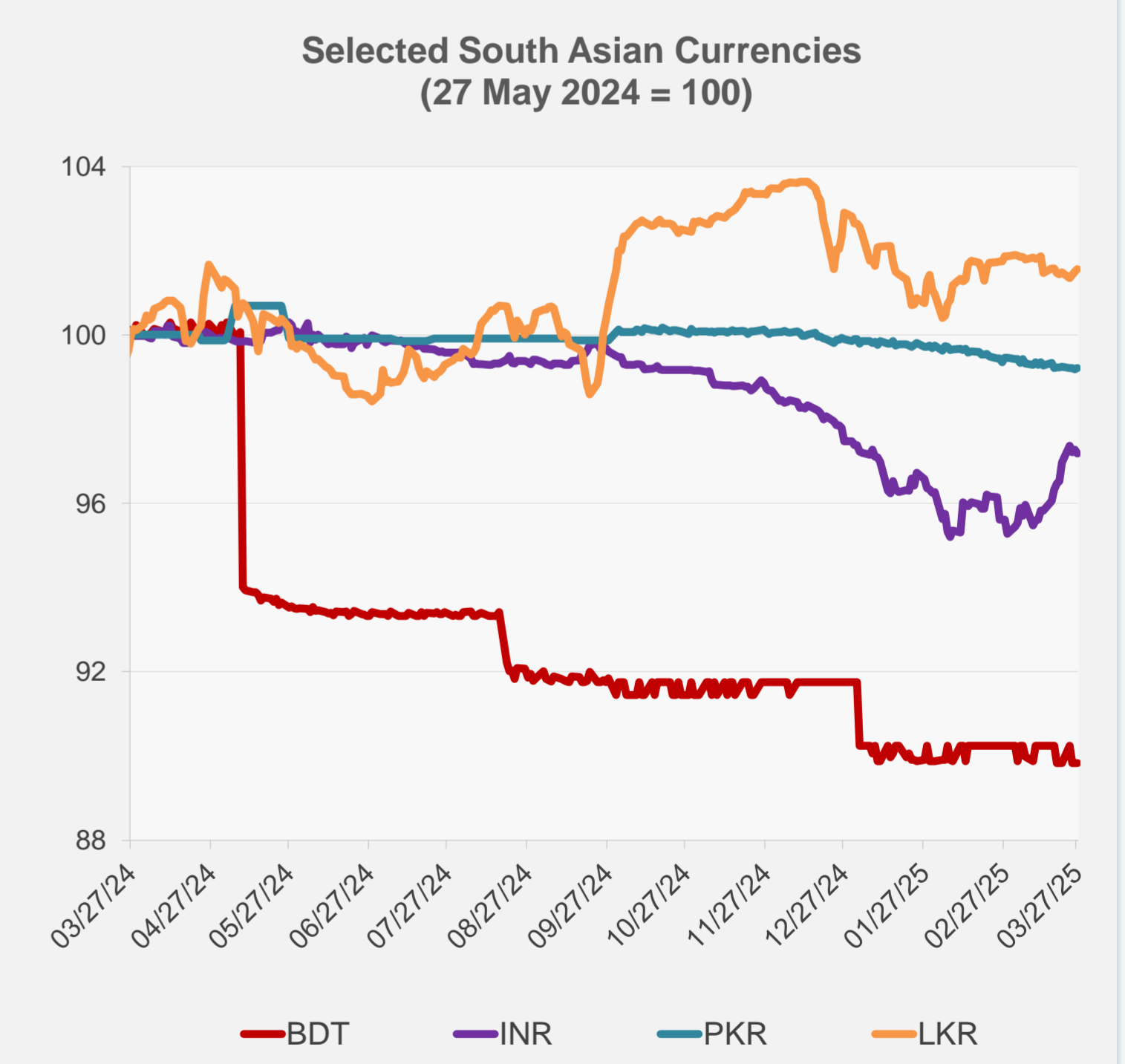
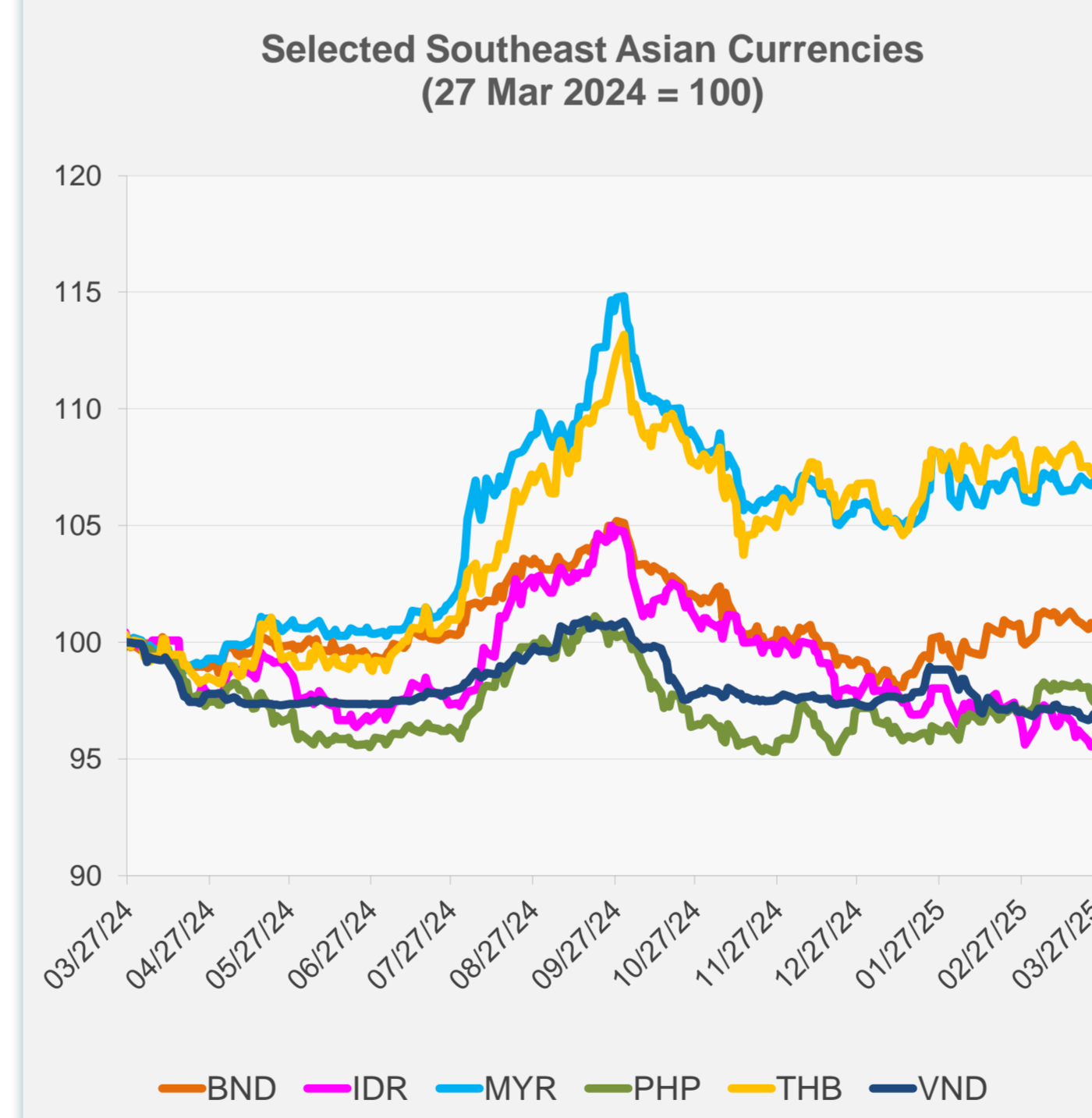


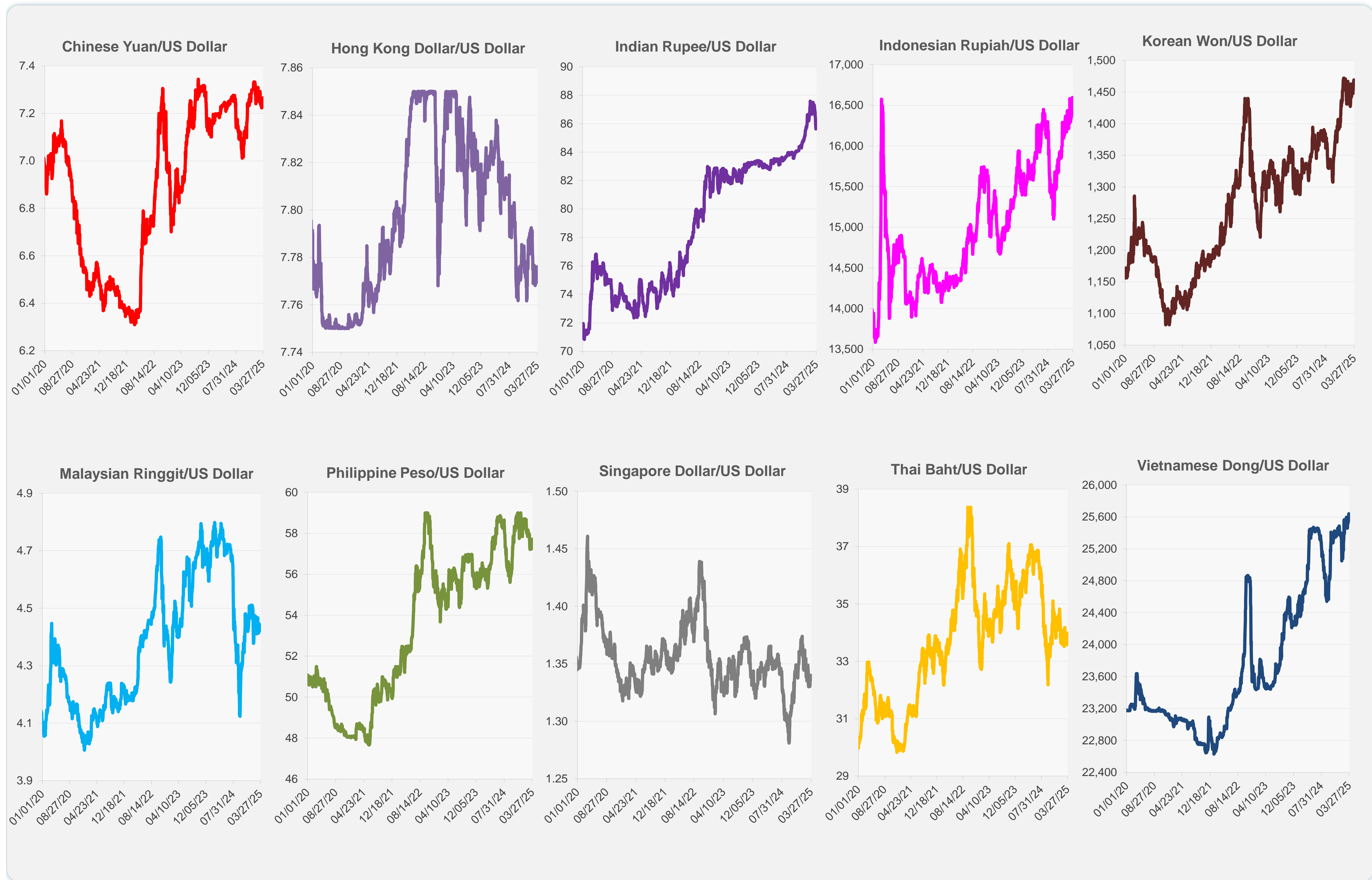
	Latest Closing	% change from Previous Day	% change from 01-Jan-25
Euro	0.93	0.15	4.28
Japanese yen (JPY)	150.99	-0.22	4.09
Bangladeshi taka (BDT)	122.05	0.00	-2.09
Brunei dollar (BND)	1.34	0.07	1.91
Chinese yuan (CNY)	7.27	-0.02	0.47
Hong Kong dollar (HKD)	7.78	0.00	-0.10
Indian rupee (INR)	85.79	-0.08	-0.20
Indonesian rupiah (IDR)	16,560.00	0.12	-2.81
Korean won (KRW)	1,465.65	0.02	0.44
Malaysian ringgit (MYR)	4.43	-0.05	0.90
Pakistan rupee (PKR)	280.28	0.03	-0.68
Philippine peso (PHP)	57.39	0.55	0.79
Singapore dollar (SGD)	1.34	0.07	1.91
Sri Lanka rupee (LKR)	296.12	0.07	-1.05
Taipei,China NT dollar (TWD)	33.12	-0.07	-1.01
Thai baht (THB)	33.89	0.26	0.60
Vietnamese dong (VND)	25,570.00	0.00	-0.33



NIE = Newly Industrialized Economies



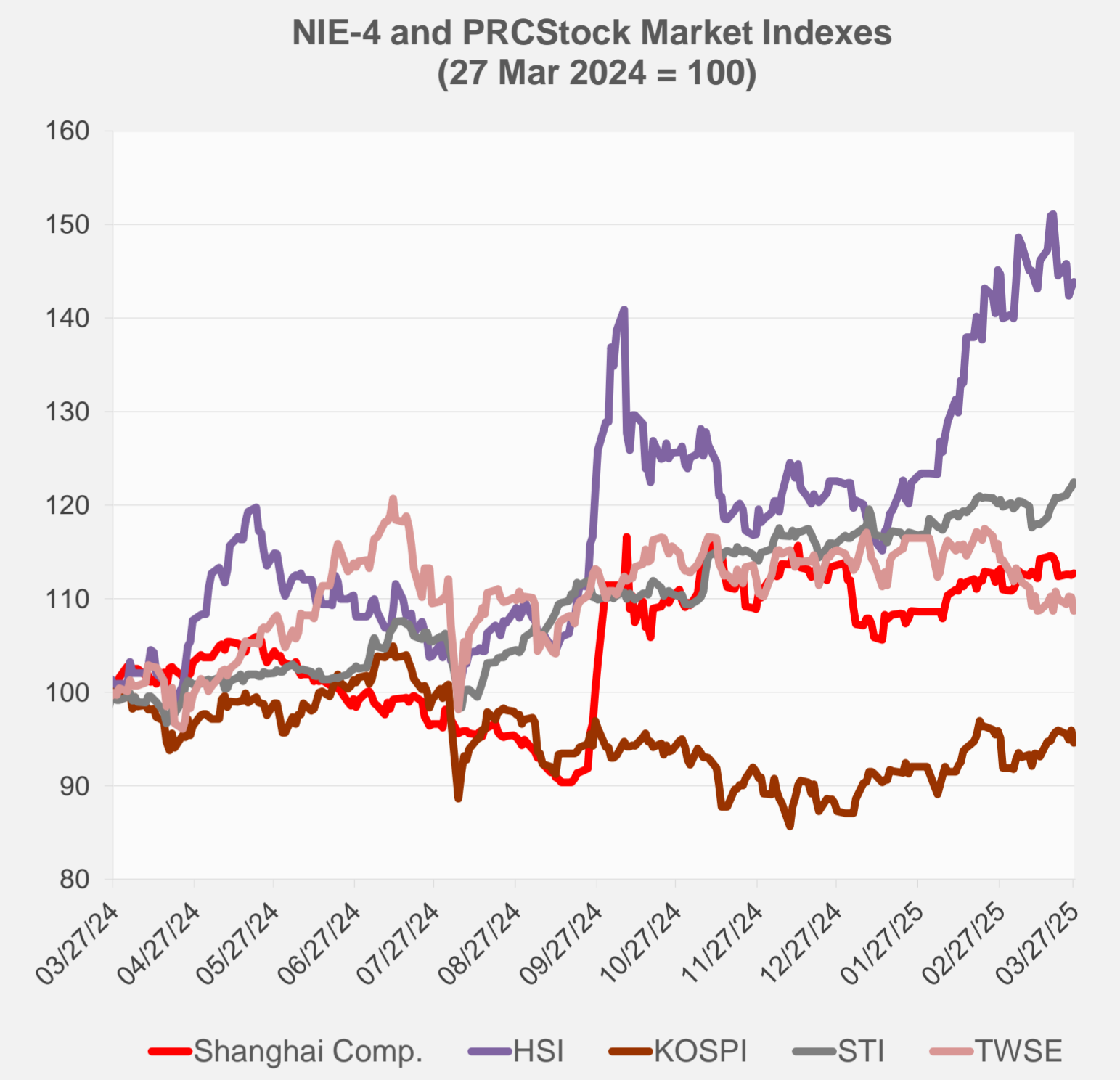
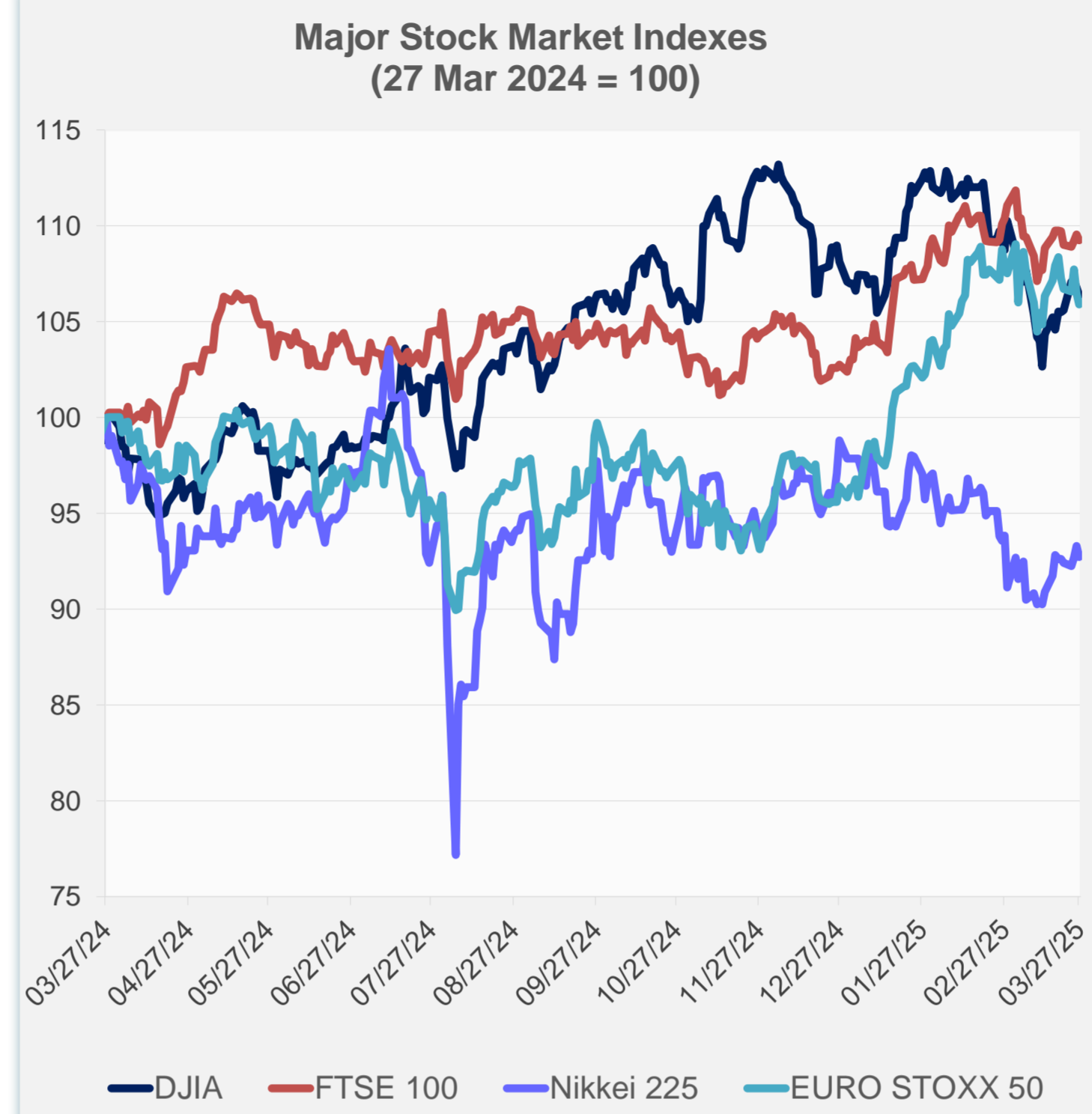
Note: Negative/Decreasing values indicate depreciation of local currency, and positive/increasing values indicate appreciation.
Source: ADB calculations using data from Haver Analytics.



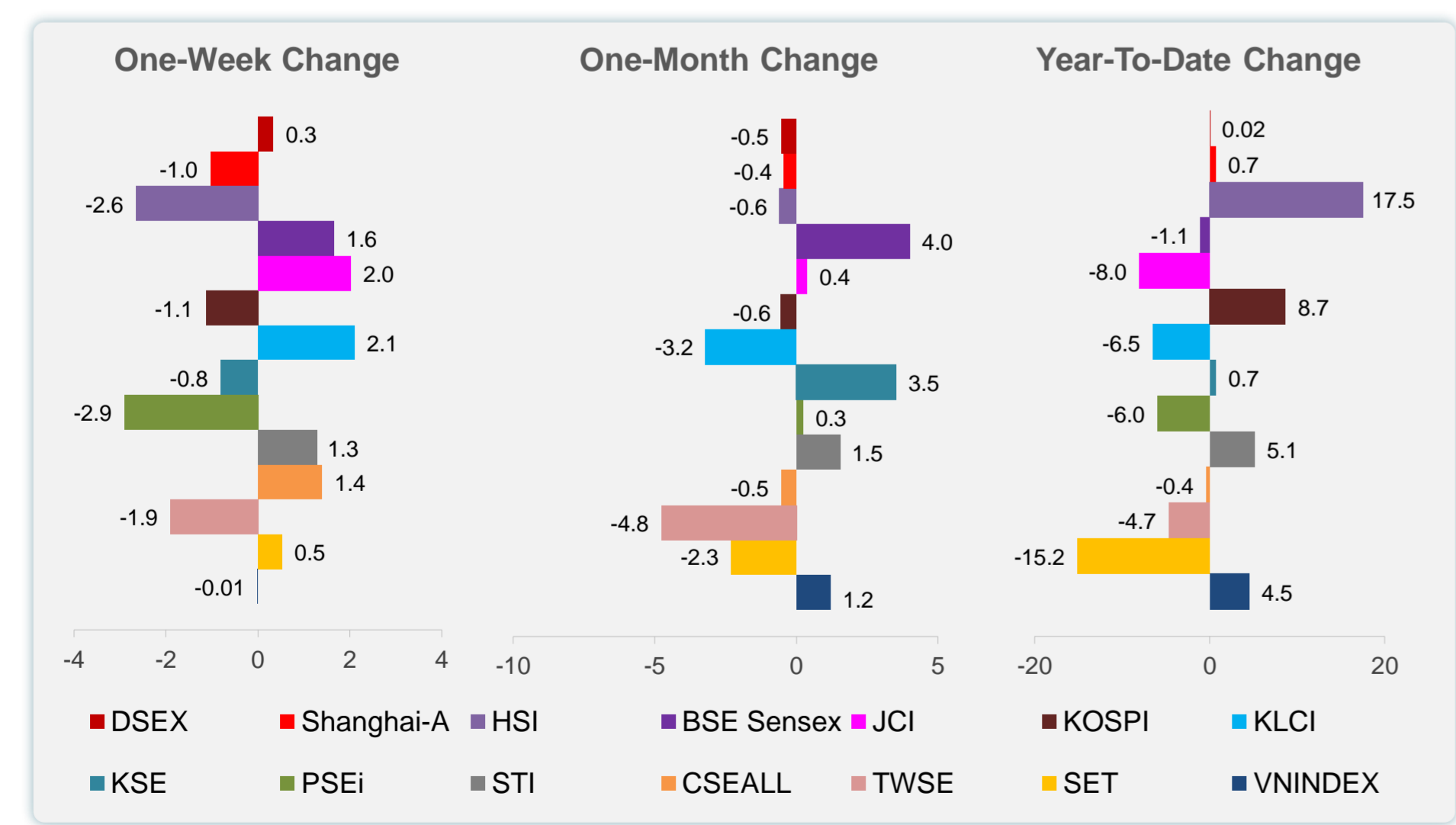
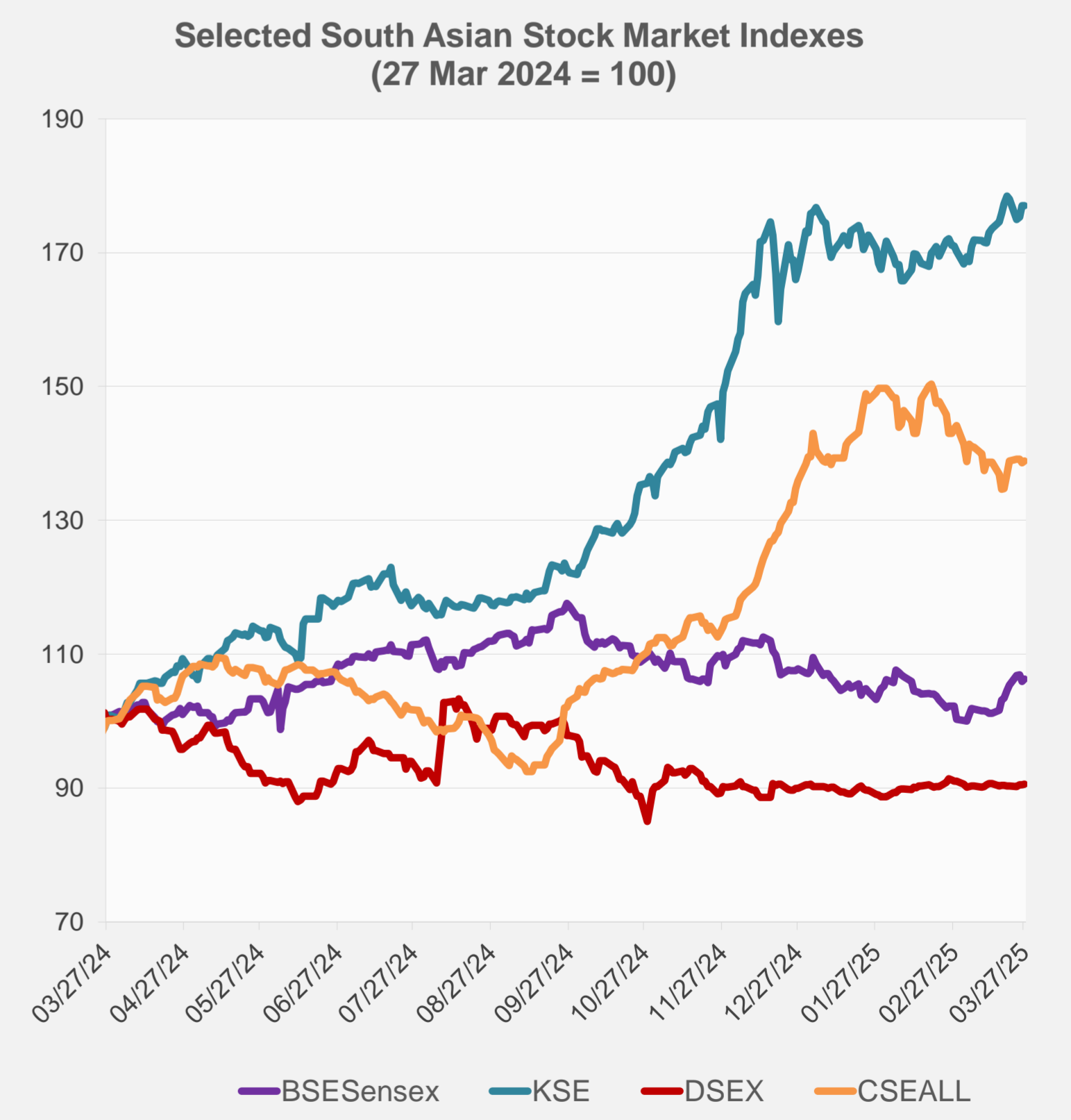
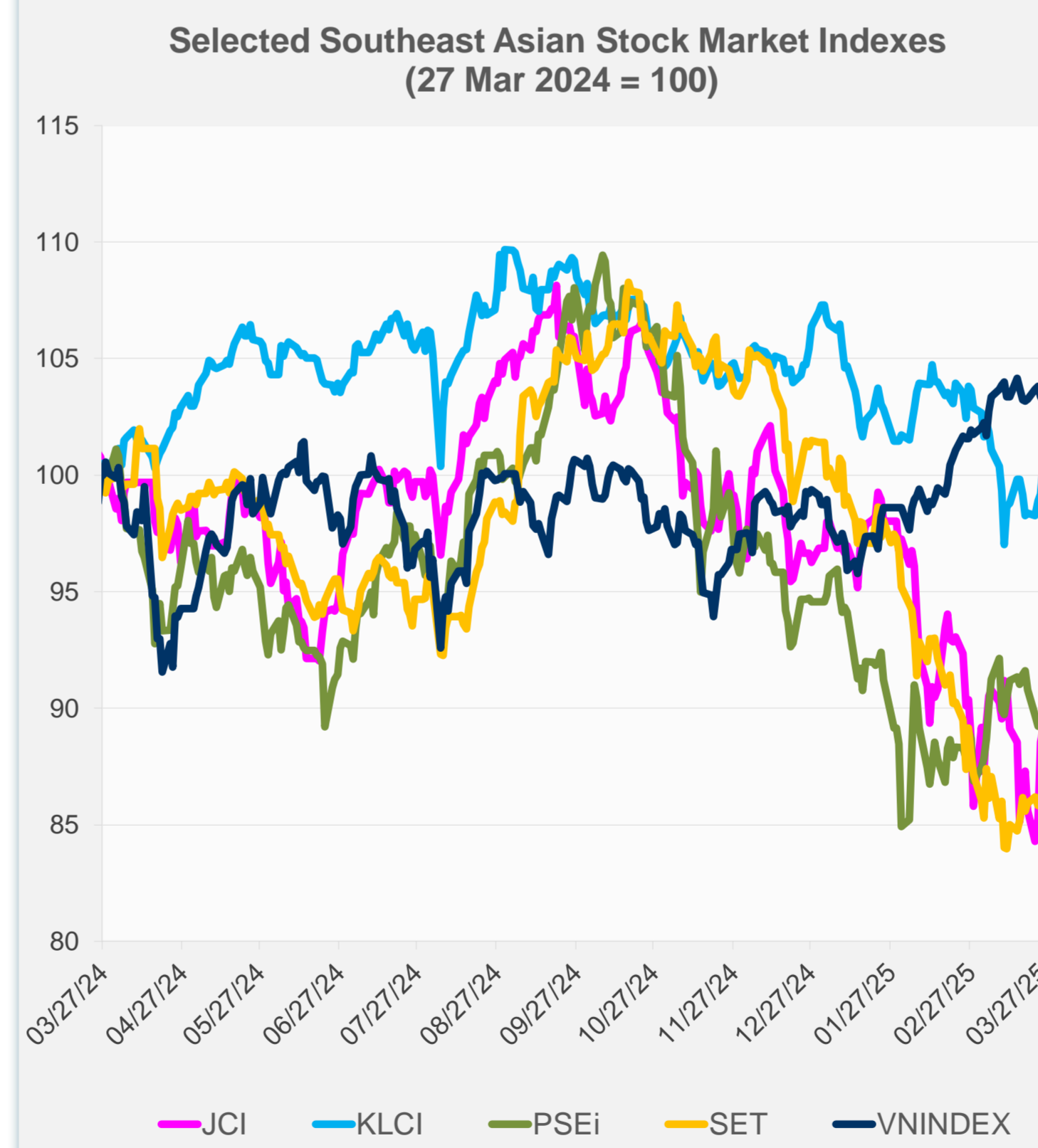
Source: Haver Analytics.

Daily Market Watch
STOCK INDEXES

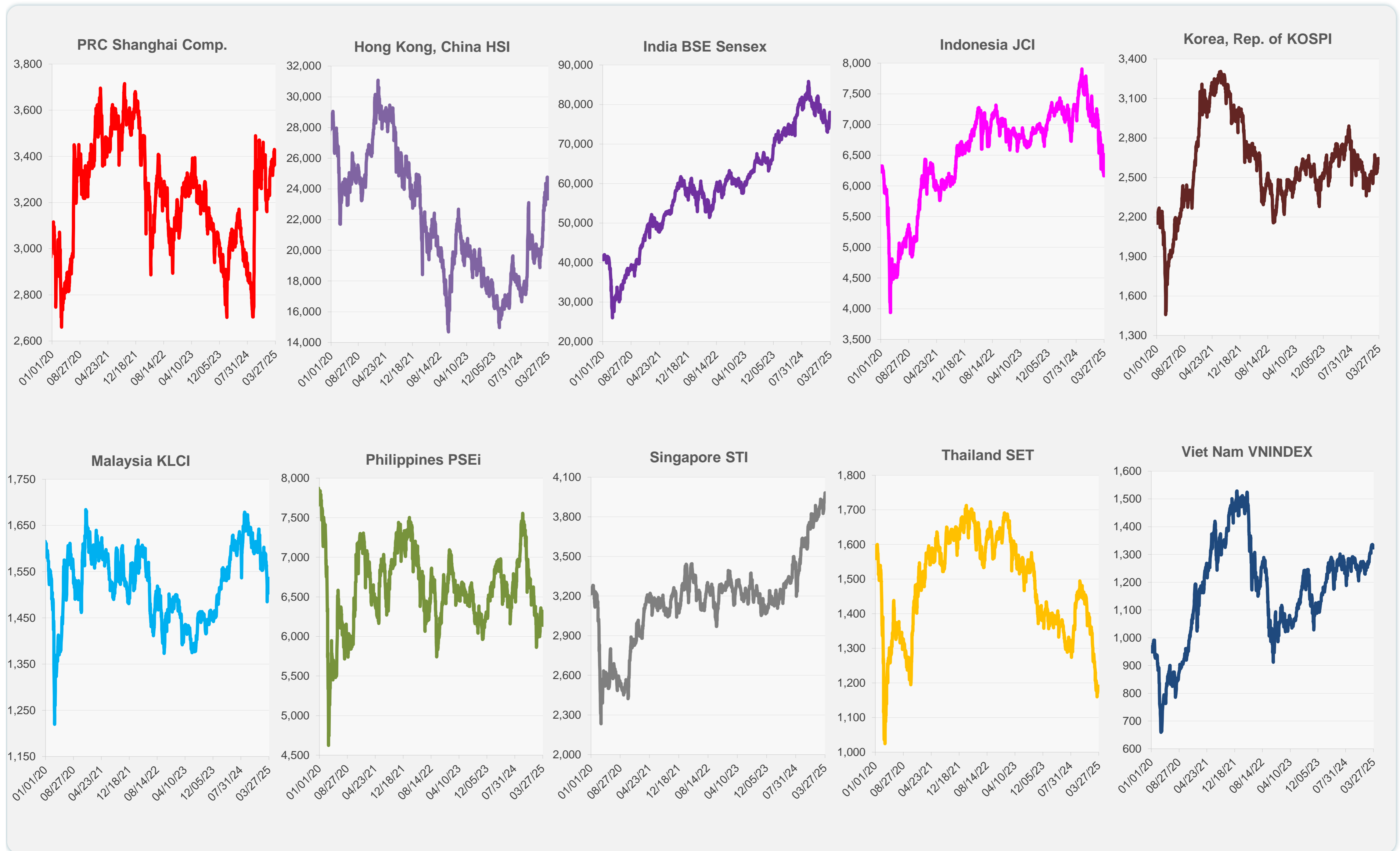
	Latest Closing	% change from Previous Day	% change from 01-Jan-25
US Dow Jones Ind Avg	42,299.70	-0.37	-0.57
US NASDAQ	17,804.03	-0.53	-7.80
US S&P 500	5,693.31	-0.33	-3.20
UK FTSE 100	8,666.12	-0.27	6.03
EURO STOXX 50	5,381.08	-0.57	9.91
Japan NIKKEI 225	37,799.97	-0.60	-5.25
Bangladesh DSEX	5,219.16	0.10	0.02
PRC Shanghai Comp.	3,373.75	0.15	0.66
Hong Kong, China HSI	23,578.80	0.41	17.54
India BSE Sensex	77,606.43	0.41	-1.15
Indonesia JCI	6,510.62	0.59	-8.04
Korea, Rep. of KOSPI	2,607.15	-1.39	8.65
Malaysia KLCI	1,535.73	1.16	-6.49
Pakistan KSE 100	117,806.74	0.03	0.68
Philippines PSEi	6,139.51	-0.43	-5.96
Singapore STI	3,981.57	0.45	5.12
Sri Lanka CSEALL	15,882.06	0.22	-0.39
Taipei,China TWSE	21,951.76	-1.39	-4.70
Thailand SET	1,187.90	-0.21	-15.16
Viet Nam VNINDEX	1,323.81	-0.17	4.50



NIE = Newly Industrialized Economies



Sources: ADB calculations using data from CEIC Data Company and Haver Analytics.



Sources: CEIC Data Company and Haver Analytics.

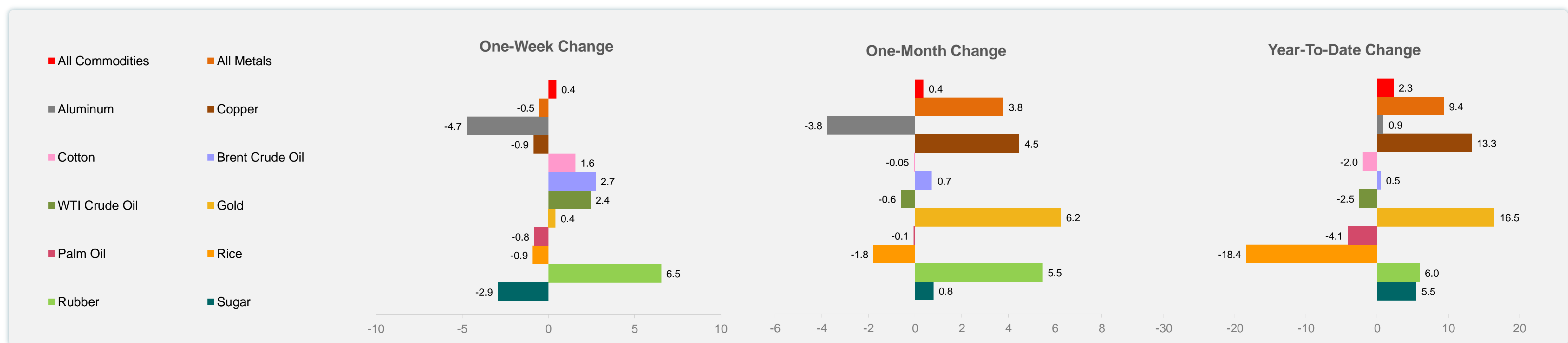
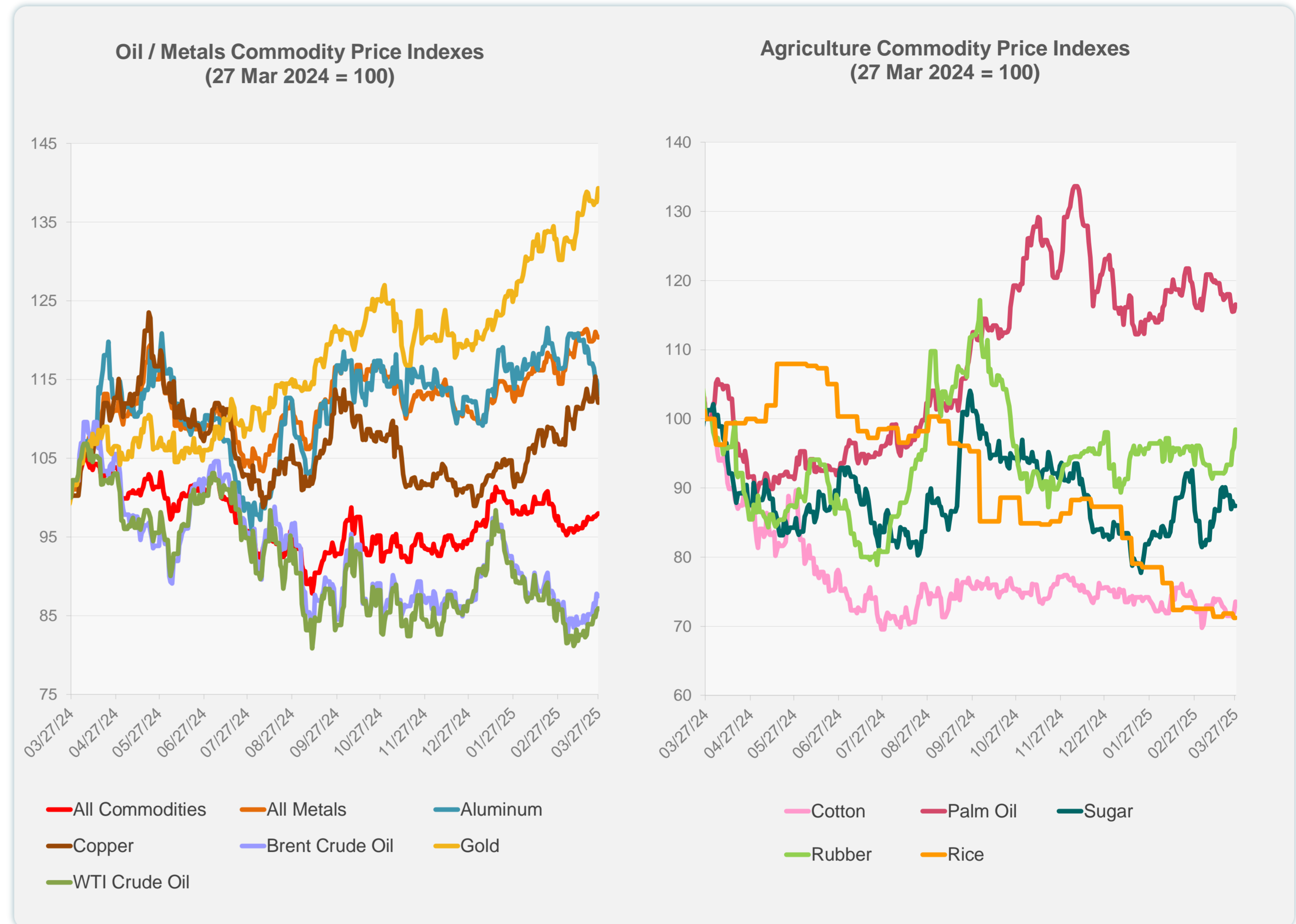
Daily Market Watch
COMMODITY PRICES

28 March 2025, 9:00 AM Manila

	Unit	Latest Closing	% change from Previous Day	% change from 01-Jan-25
S&P All Commodities	US\$	562.27	0.17	2.30
S&P All Metals	US\$	336.21	-0.21	9.38
Aluminum	US\$/metric ton	2,548.97	-1.53	0.88
Copper	US\$/metric ton	9,800.17	-0.84	13.26
Cotton	US cents/lb	64.57	2.20	-2.02
Brent Crude Oil	US\$/barrel	74.50	-0.35	0.53
WTI Crude Oil	US\$/barrel	69.92	0.39	-2.51
Gold	US\$/troy oz	3,057.29	1.26	16.49
Palm Oil	US\$/metric tonne	1,054.88	0.83	-4.11
Rice ¹	US\$/metric ton	438.00	0.00	-18.44
Rubber ²	US\$/kg	251.00	2.66	6.00
Sugar	US cents/lb	19.20	0.00	5.49

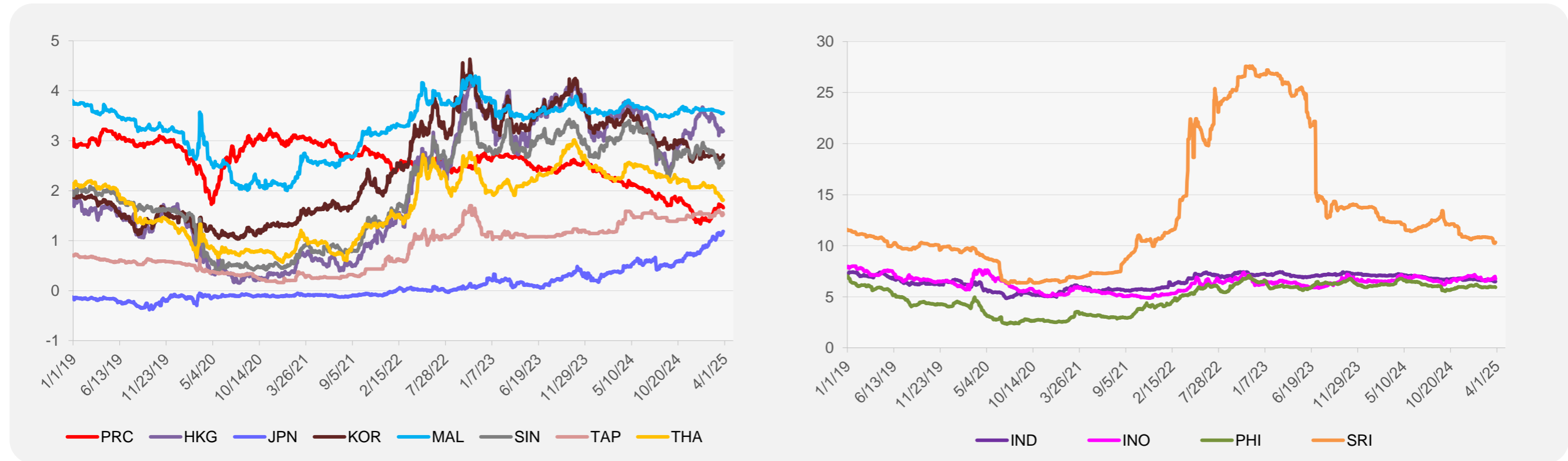
¹ Latest closing price from 26 March 2025.

² Singapore Exchange, Ribbed Smoked Sheet Rubber.

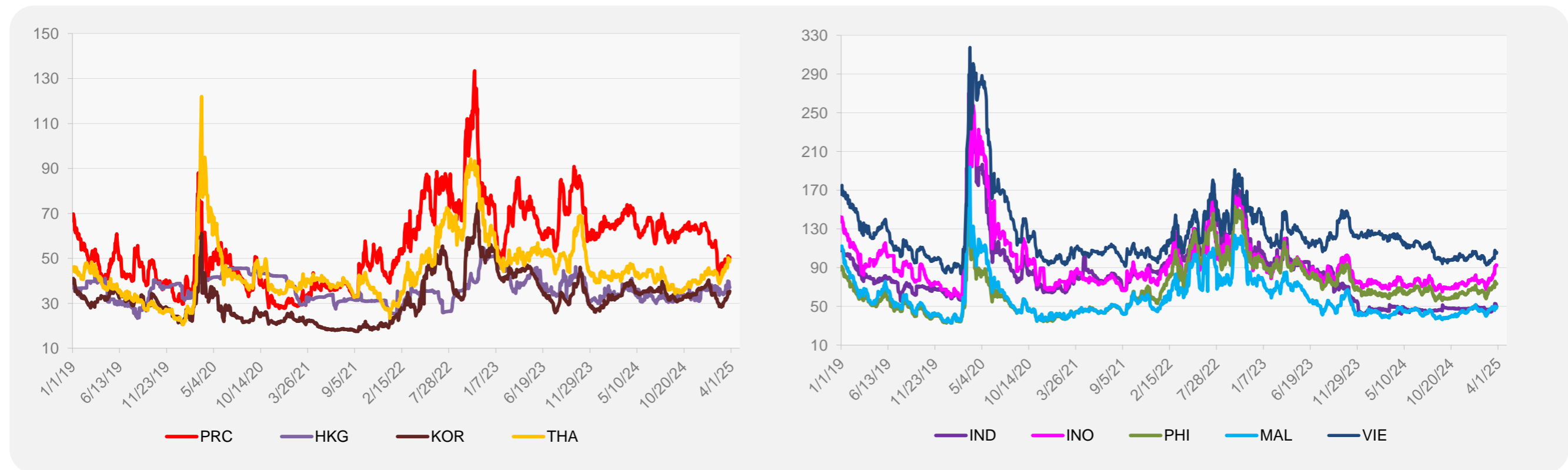


Source: ADB calculations using data from Bloomberg.

5-YEAR LOCAL CURRENCY GOVERNMENT BOND YIELDS (%)



5-YEAR CREDIT DEFAULT SWAP¹



¹ In USD and based on sovereign bonds.
Source: ADB calculations using data from Bloomberg.