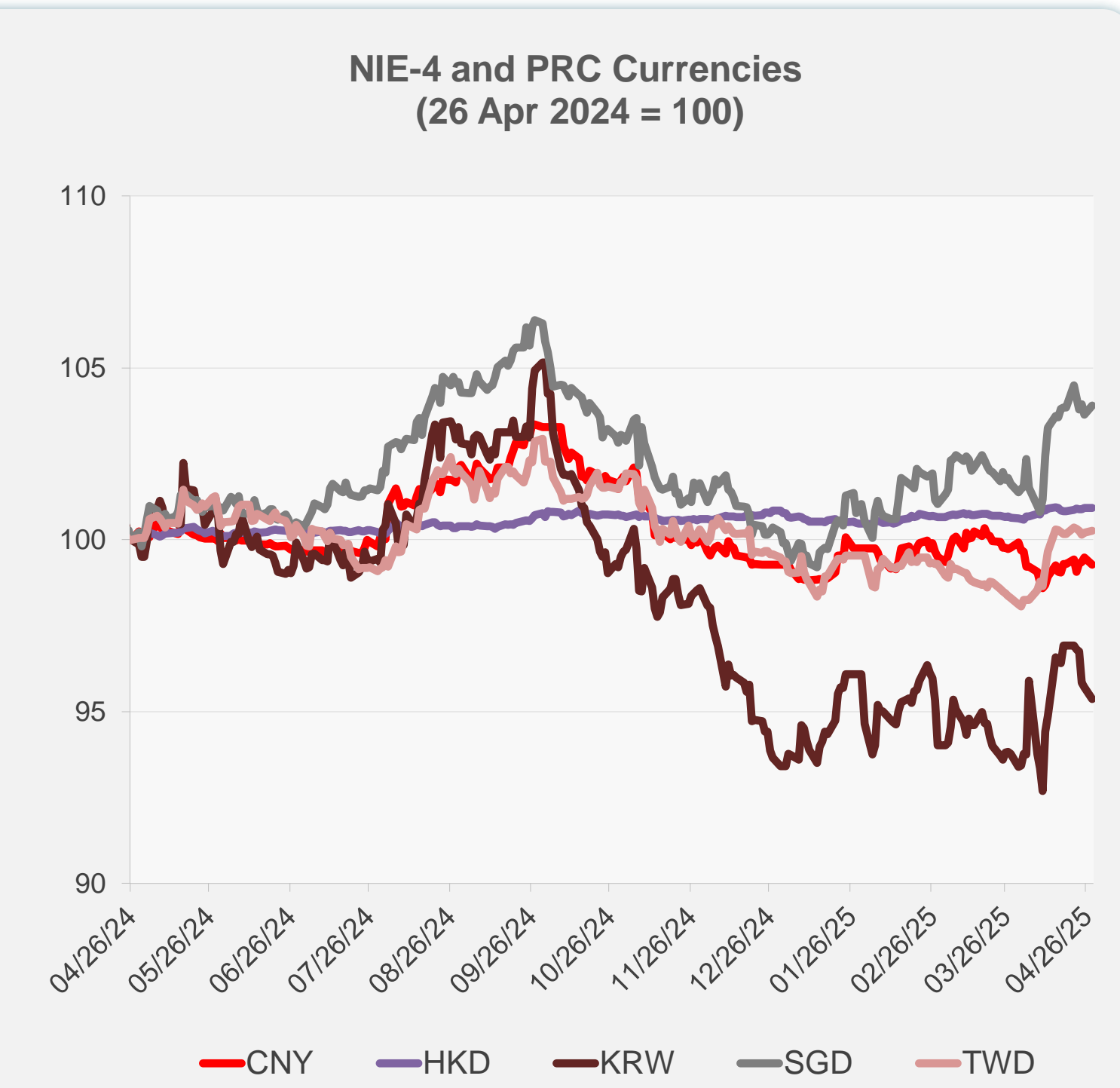
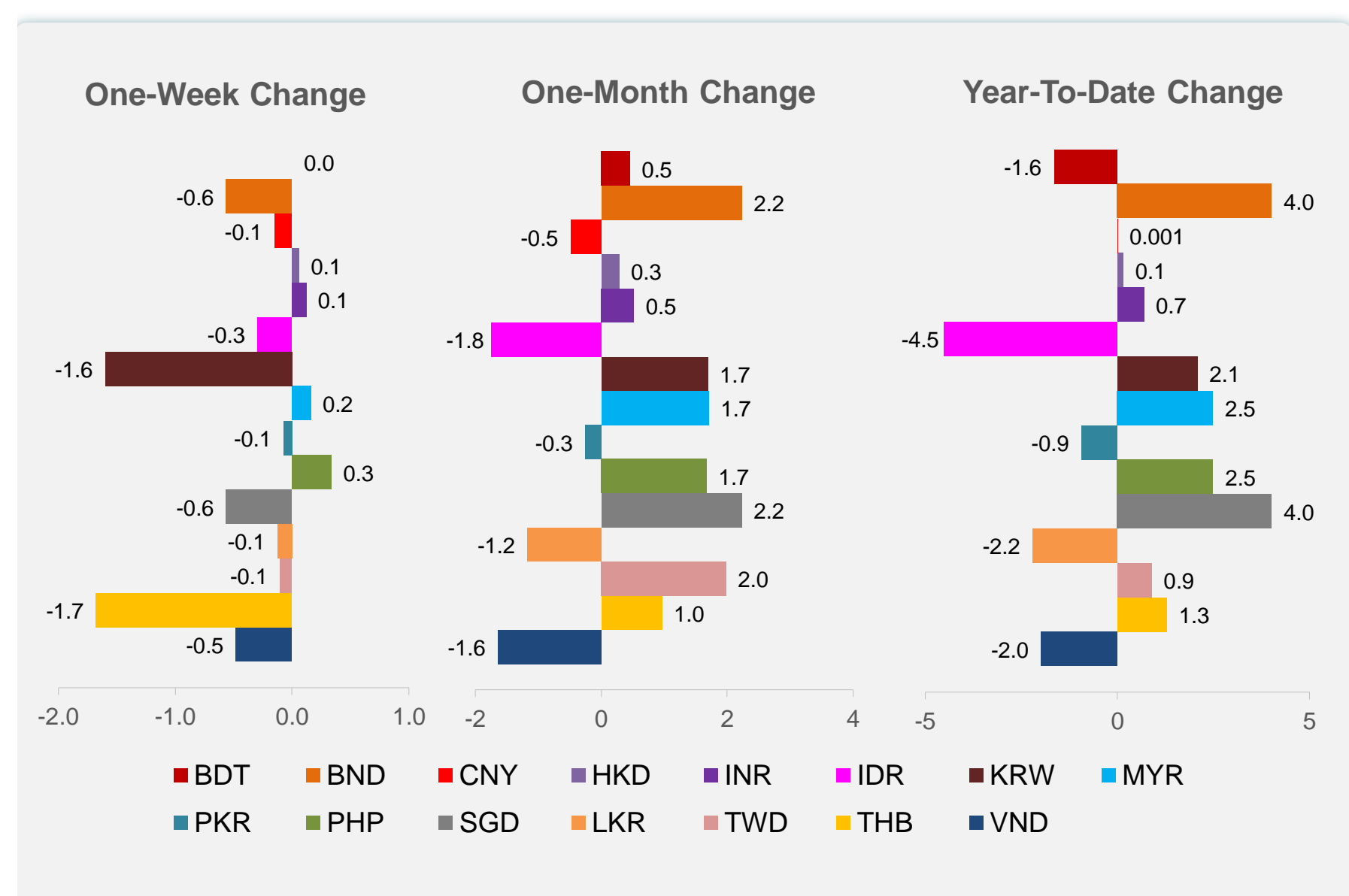
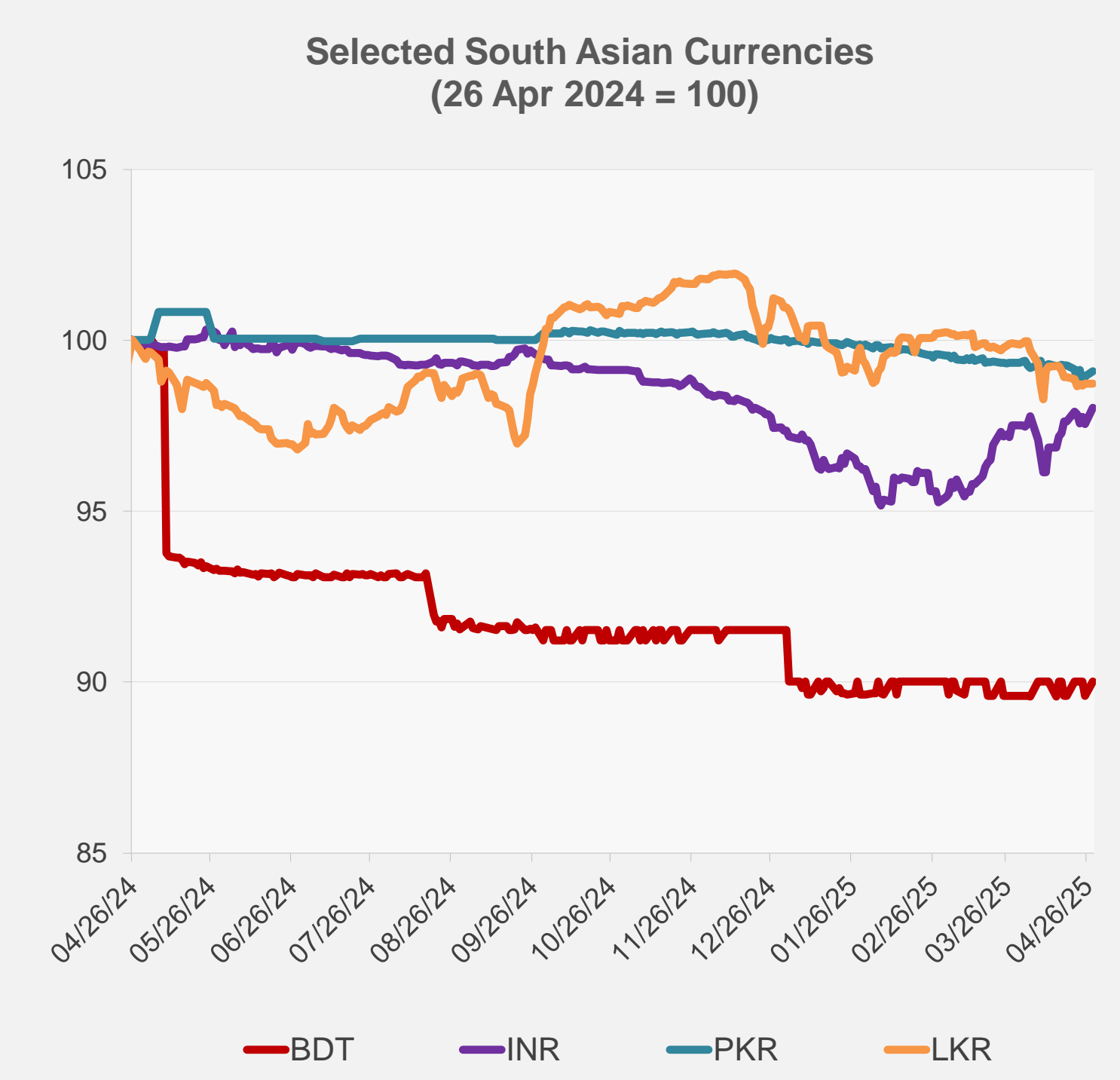
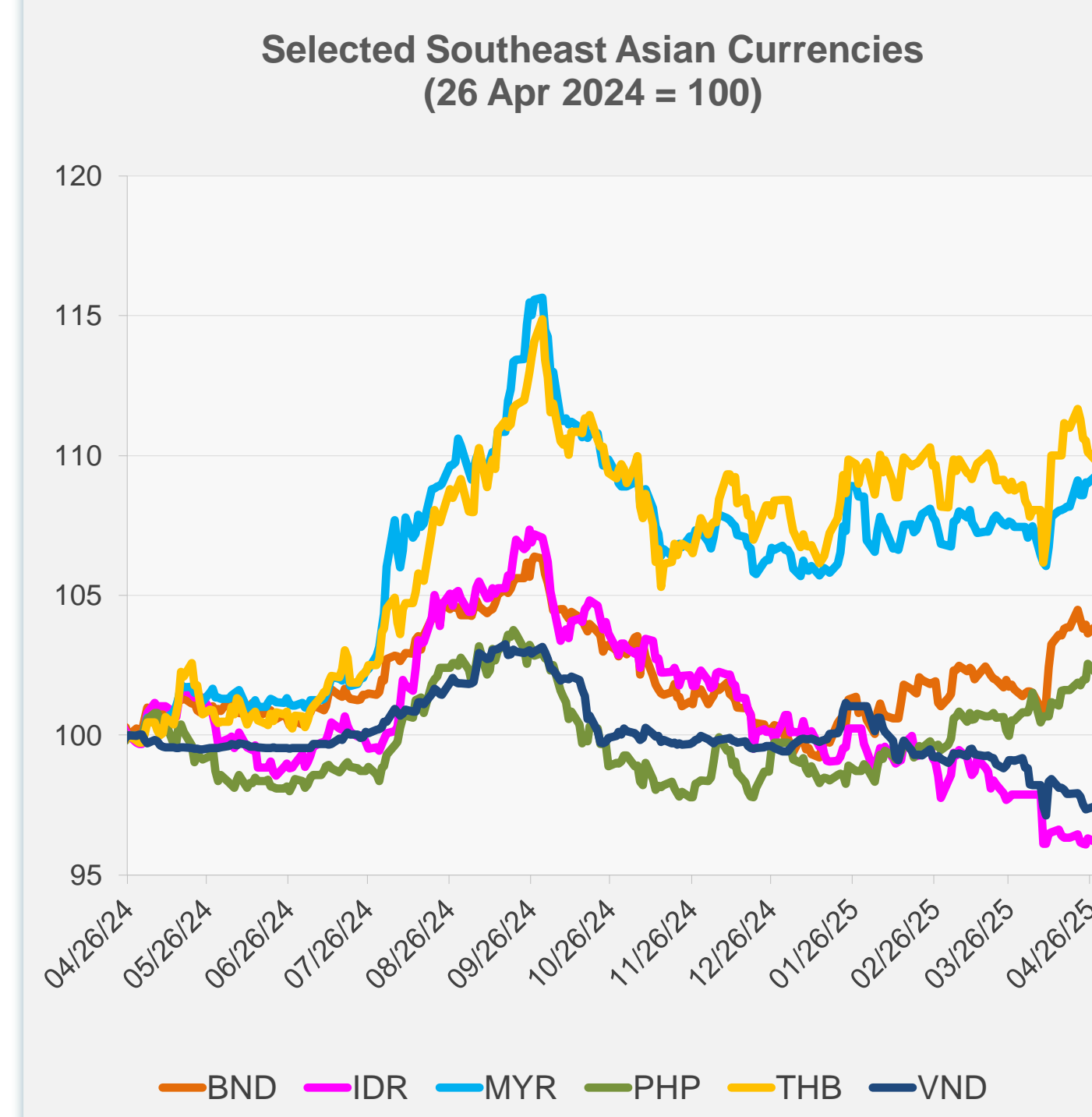


	Latest Closing	% change from Previous Day	% change from 01-Jan-25
Euro	0.88	0.09	9.89
Japanese yen (JPY)	142.86	0.78	10.01
Bangladeshi taka (BDT)	121.50	0.45	-1.65
Brunei dollar (BND)	1.31	0.26	4.01
Chinese yuan (CNY)	7.30	-0.21	0.00
Hong Kong dollar (HKD)	7.76	0.01	0.15
Indian rupee (INR)	85.03	0.48	0.69
Indonesian rupiah (IDR)	16,855.00	-0.15	-4.51
Korean won (KRW)	1,442.15	-0.36	2.08
Malaysian ringgit (MYR)	4.36	0.25	2.49
Pakistan rupee (PKR)	281.00	0.14	-0.93
Philippine peso (PHP)	56.44	-0.32	2.49
Singapore dollar (SGD)	1.31	0.26	4.01
Sri Lanka rupee (LKR)	299.60	0.00	-2.20
Taipei,China NT dollar (TWD)	32.50	0.05	0.89
Thai baht (THB)	33.66	-0.30	1.28
Vietnamese dong (VND)	26,000.00	0.08	-1.98



NIE = Newly Industrialized Economies



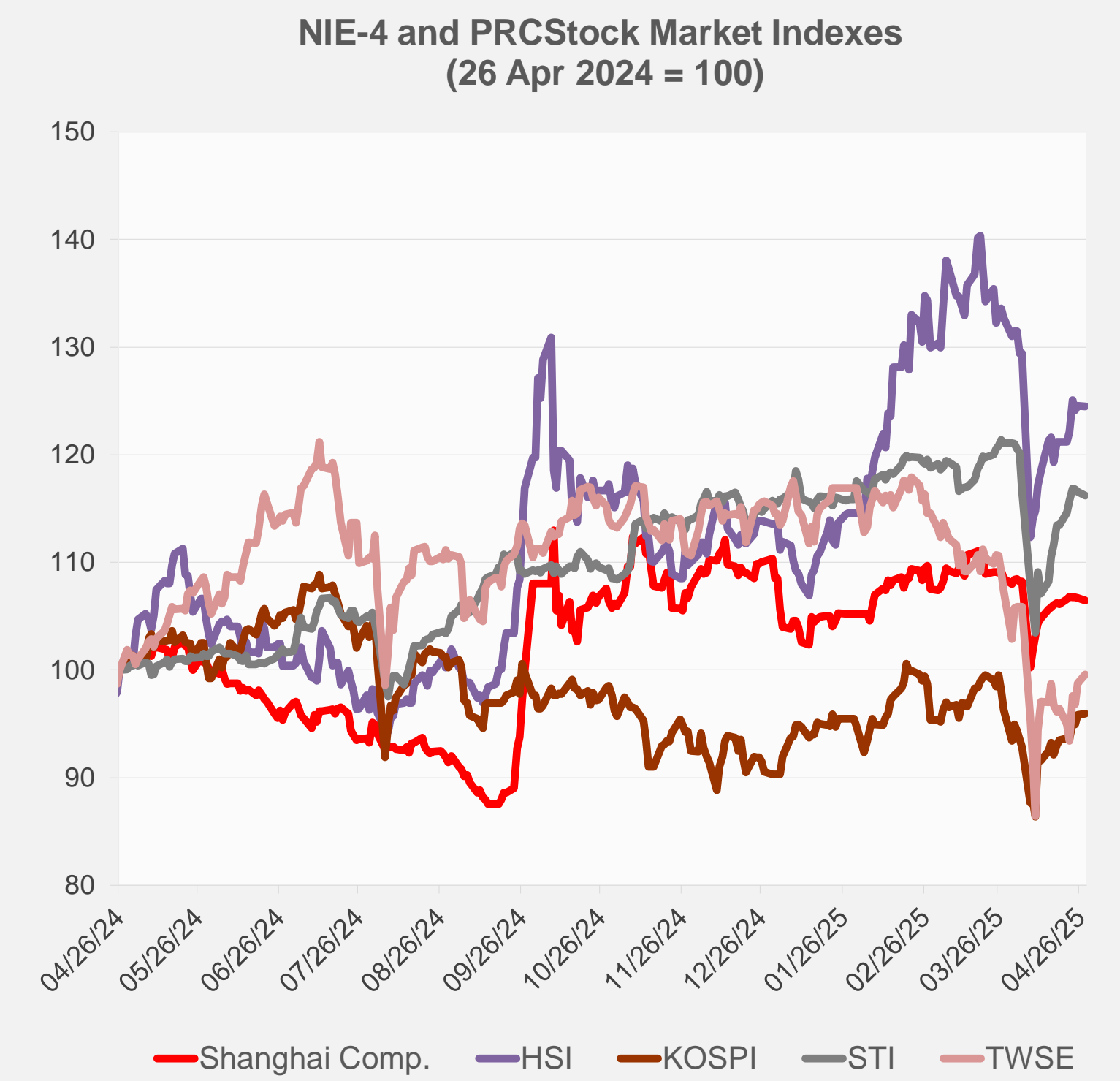
Note: Negative/Decreasing values indicate depreciation of local currency, and positive/increasing values indicate appreciation.
Source: ADB calculations using data from Haver Analytics.



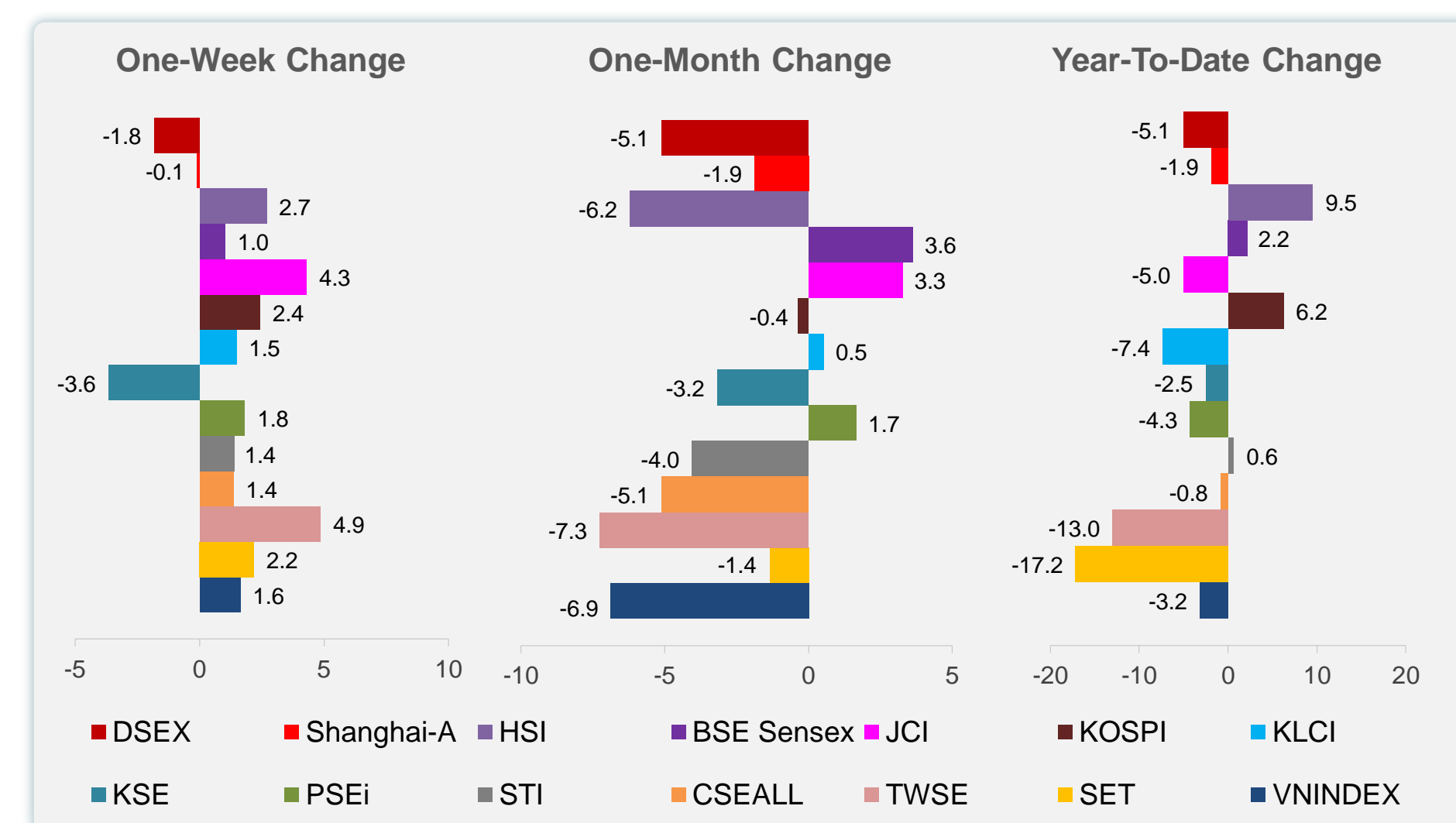
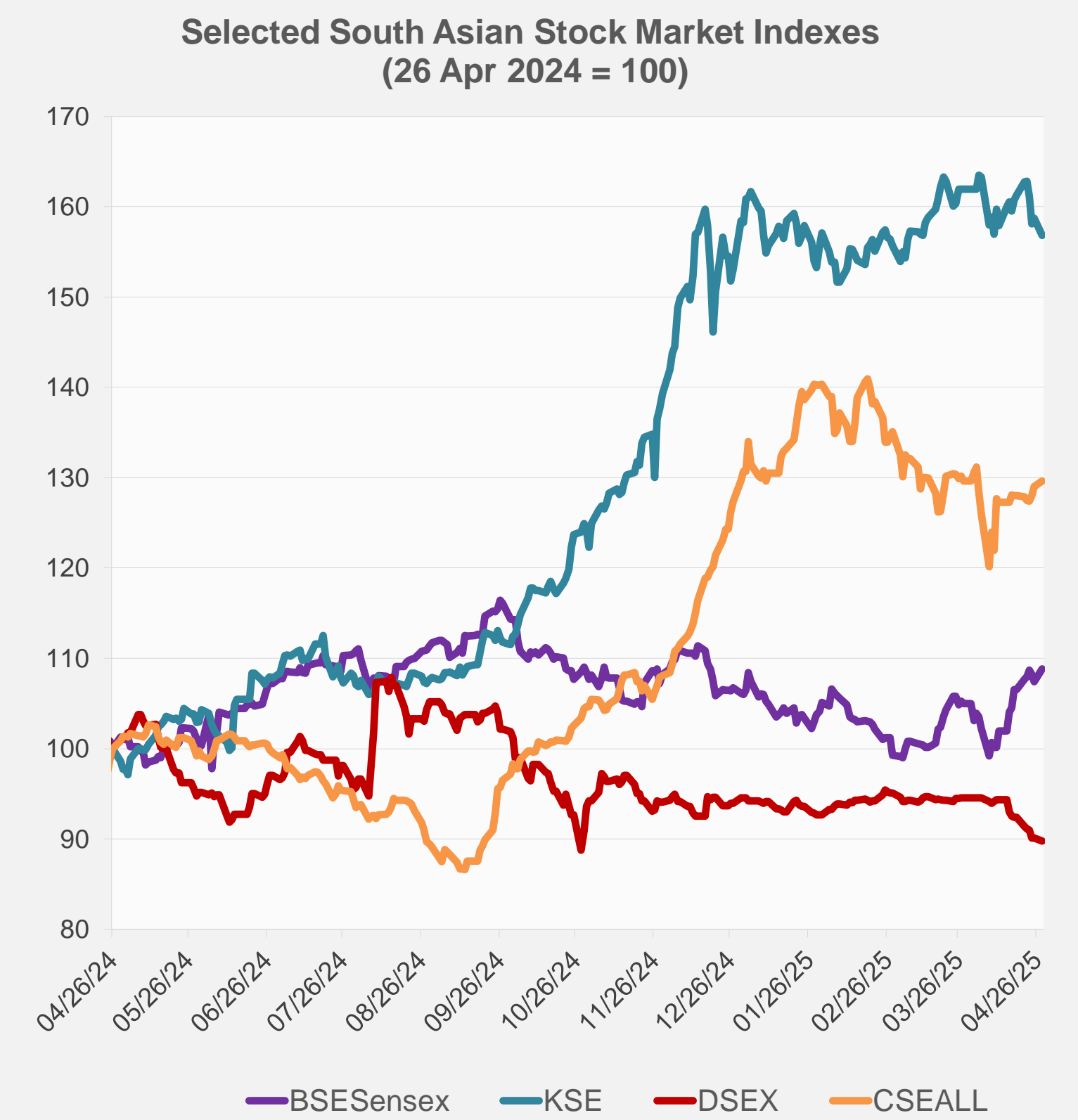
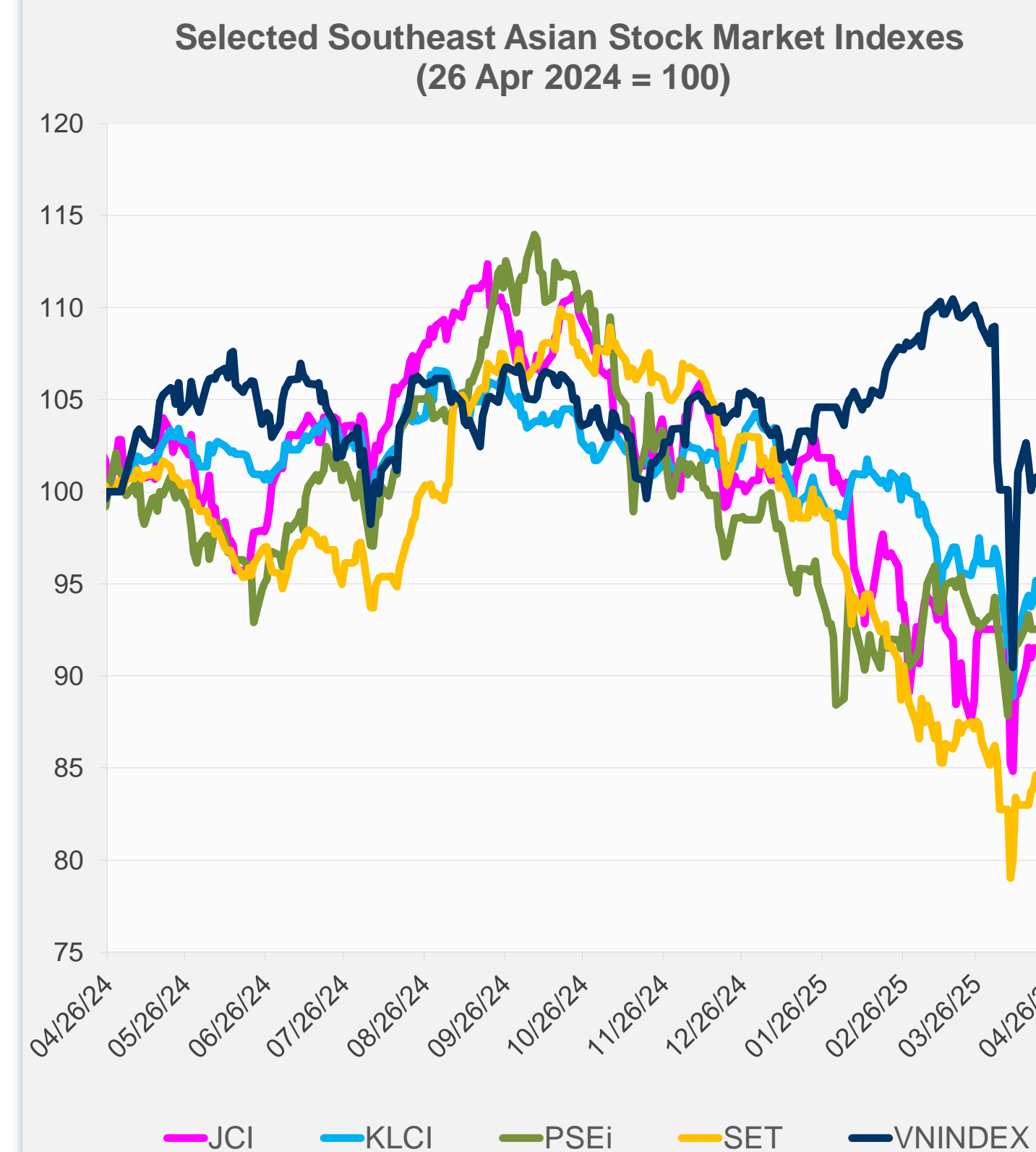
Source: Haver Analytics.

Daily Market Watch
STOCK INDEXES

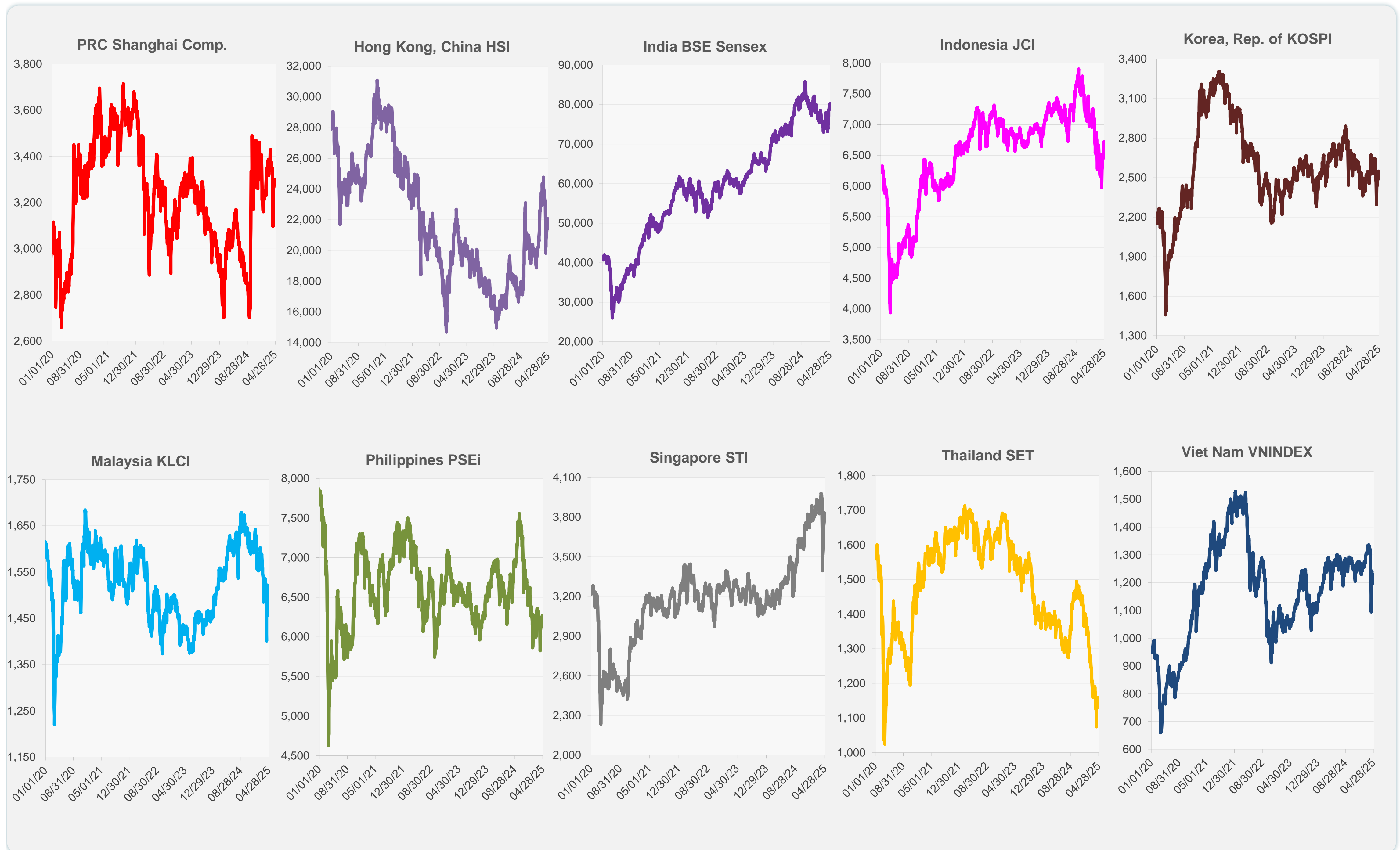
	Latest Closing	% change from Previous Day	% change from 01-Jan-25
US Dow Jones Ind Avg	40,227.59	0.28	-5.45
US NASDAQ	17,366.13	-0.10	-10.07
US S&P 500	5,528.75	0.06	-6.00
UK FTSE 100	8,417.34	0.02	2.99
EURO STOXX 50	5,170.49	0.32	5.61
Japan NIKKEI 225	35,839.99	0.38	-10.16
Bangladesh DSEX	4,952.79	-0.40	-5.09
PRC Shanghai Comp.	3,288.41	-0.20	-1.89
Hong Kong, China HSI	21,971.96	-0.04	9.53
India BSE Sensex	80,218.37	1.27	2.18
Indonesia JCI	6,722.97	0.66	-5.04
Korea, Rep. of KOSPI	2,548.86	0.10	6.23
Malaysia KLCI	1,521.59	0.82	-7.35
Pakistan KSE 100	114,063.90	-1.22	-2.52
Philippines PSEi	6,249.50	-0.31	-4.28
Singapore STI	3,811.80	-0.31	0.64
Sri Lanka CSEALL	15,811.47	0.44	-0.84
Taipei, China TWSE	20,034.41	0.81	-13.03
Thailand SET	1,159.53	0.05	-17.19
Viet Nam VNINDEX	1,226.80	-0.20	-3.16



NIE = Newly Industrialized Economies



Sources: ADB calculations using data from CEIC Data Company and Haver Analytics.



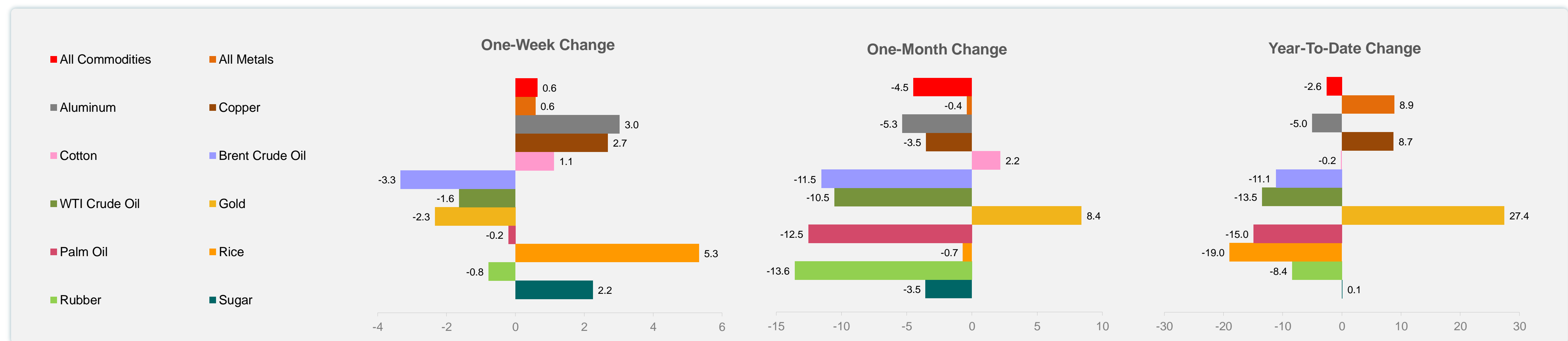
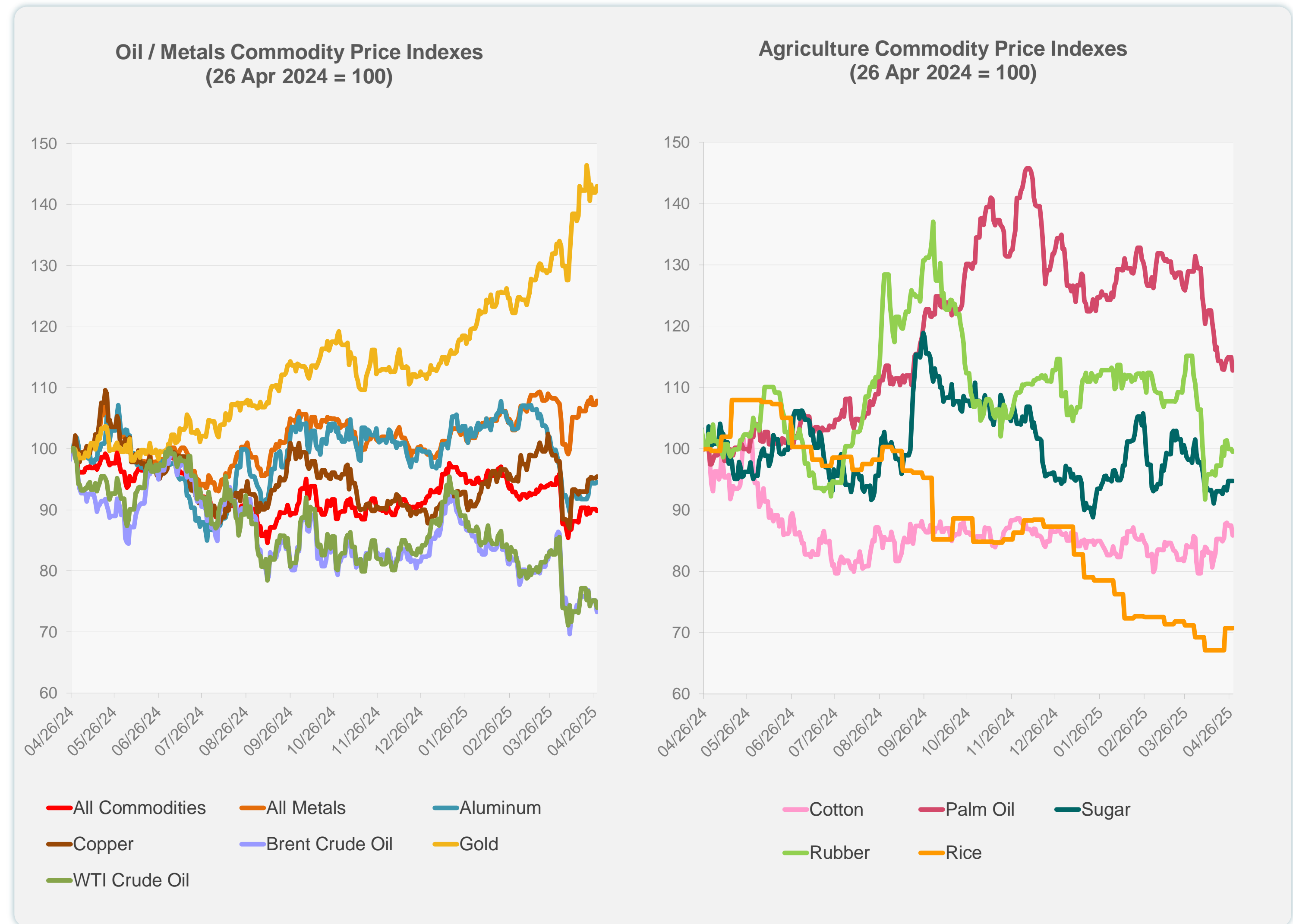
Sources: CEIC Data Company and Haver Analytics.

Daily Market Watch
COMMODITY PRICES

	Unit	Latest Closing	% change from Previous Day	% change from 01-Jan-25
S&P All Commodities	US\$	535.35	-0.35	-2.60
S&P All Metals	US\$	334.61	0.62	8.86
Aluminum	US\$/metric ton	2,400.18	0.16	-5.01
Copper	US\$/metric ton	9,406.60	0.32	8.71
Cotton	US cents/lb	65.80	-1.86	-0.15
Brent Crude Oil	US\$/barrel	65.85	-2.42	-11.14
WTI Crude Oil	US\$/barrel	62.05	-1.54	-13.48
Gold	US\$/troy oz	3,343.98	0.73	27.41
Palm Oil	US\$/metric tonne	935.61	-1.93	-14.95
Rice ¹	US\$/metric ton	435.00	0.00	-18.99
Rubber ²	US\$/kg	216.90	-0.50	-8.40
Sugar	US cents/lb	18.21	0.00	0.05

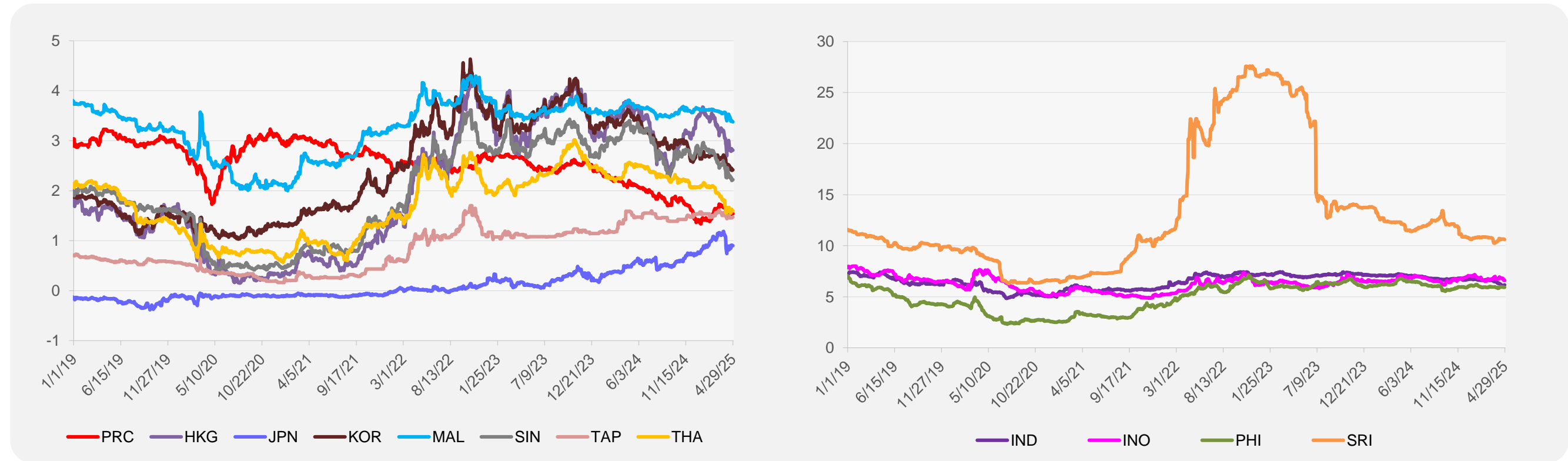
¹ Latest closing price from 9 April 2025.

² Singapore Exchange, Ribbed Smoked Sheet Rubber.

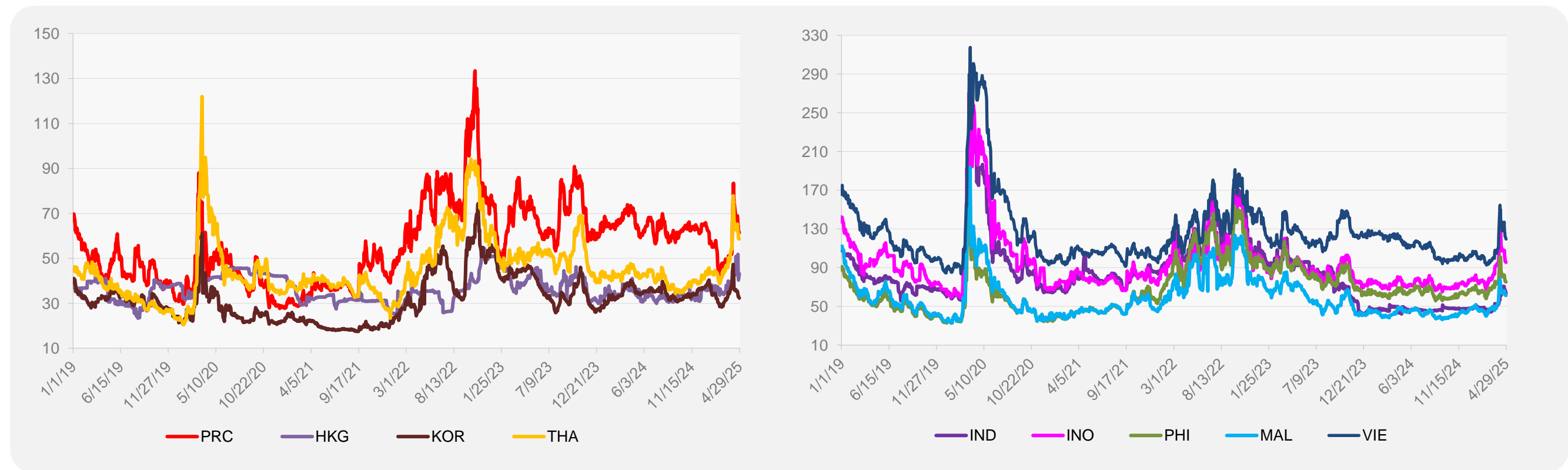


Source: ADB calculations using data from Bloomberg.

5-YEAR LOCAL CURRENCY GOVERNMENT BOND YIELDS (%)



5-YEAR CREDIT DEFAULT SWAP¹



¹ In USD and based on sovereign bonds.
Source: ADB calculations using data from Bloomberg.