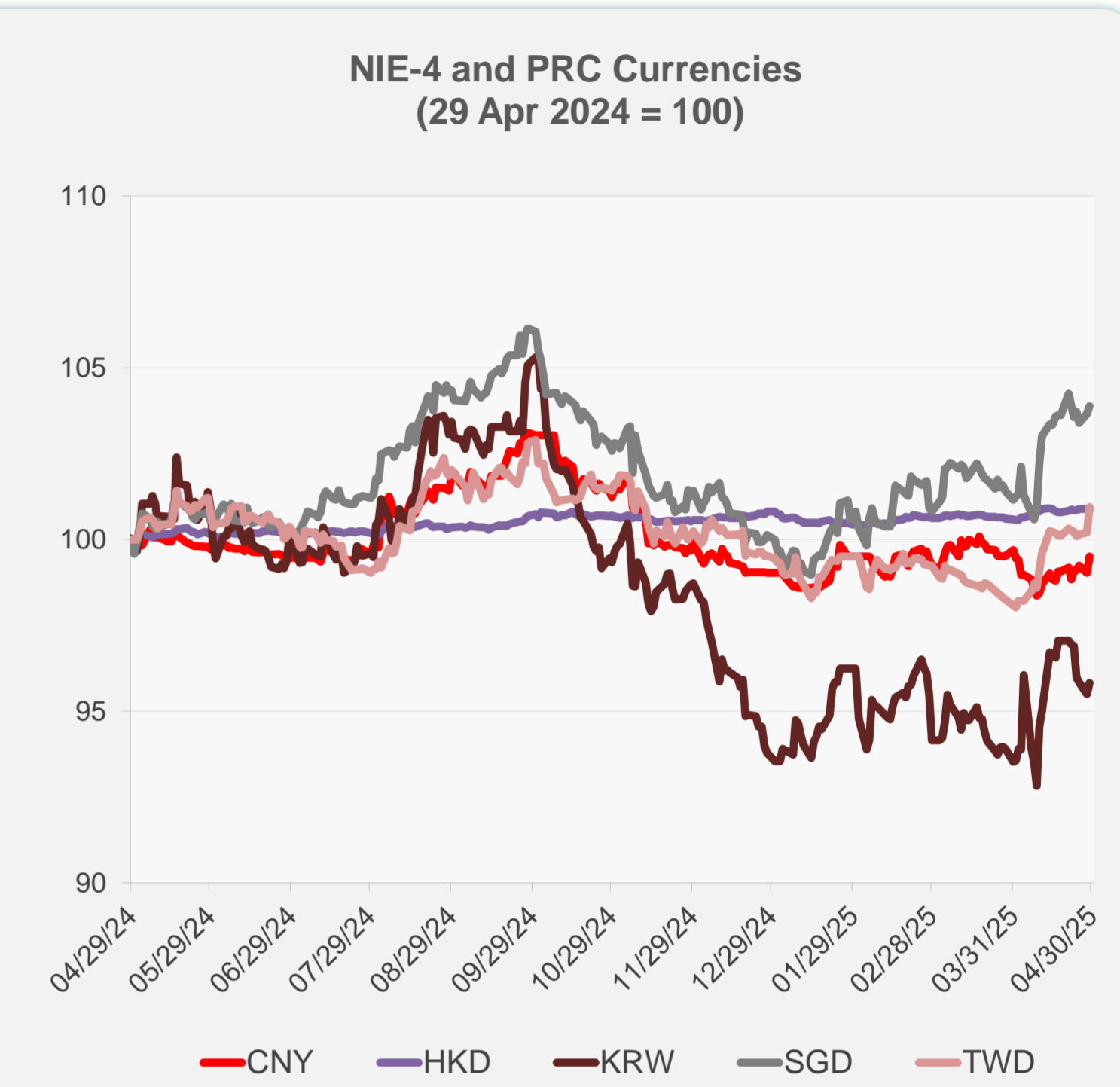
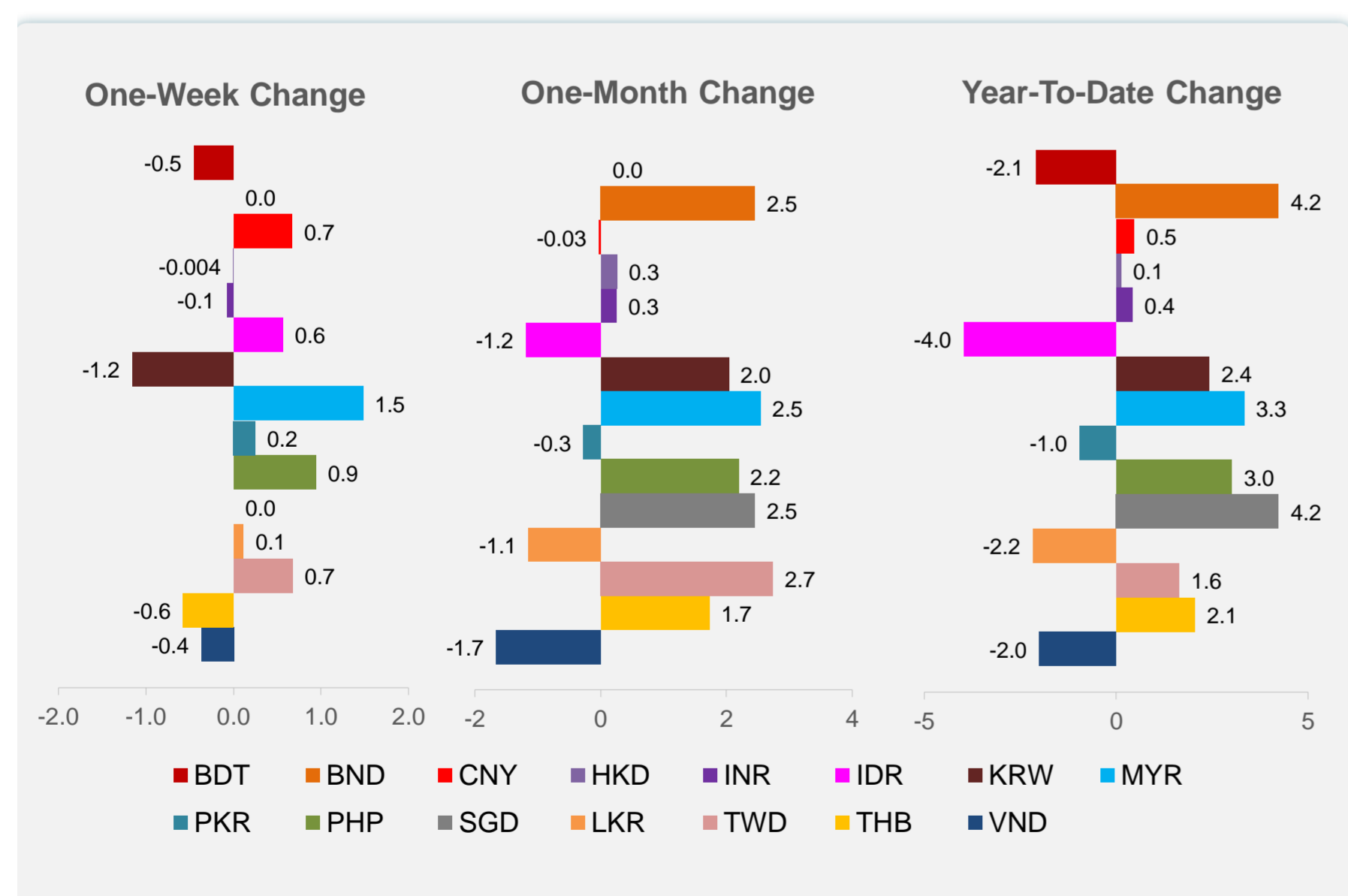
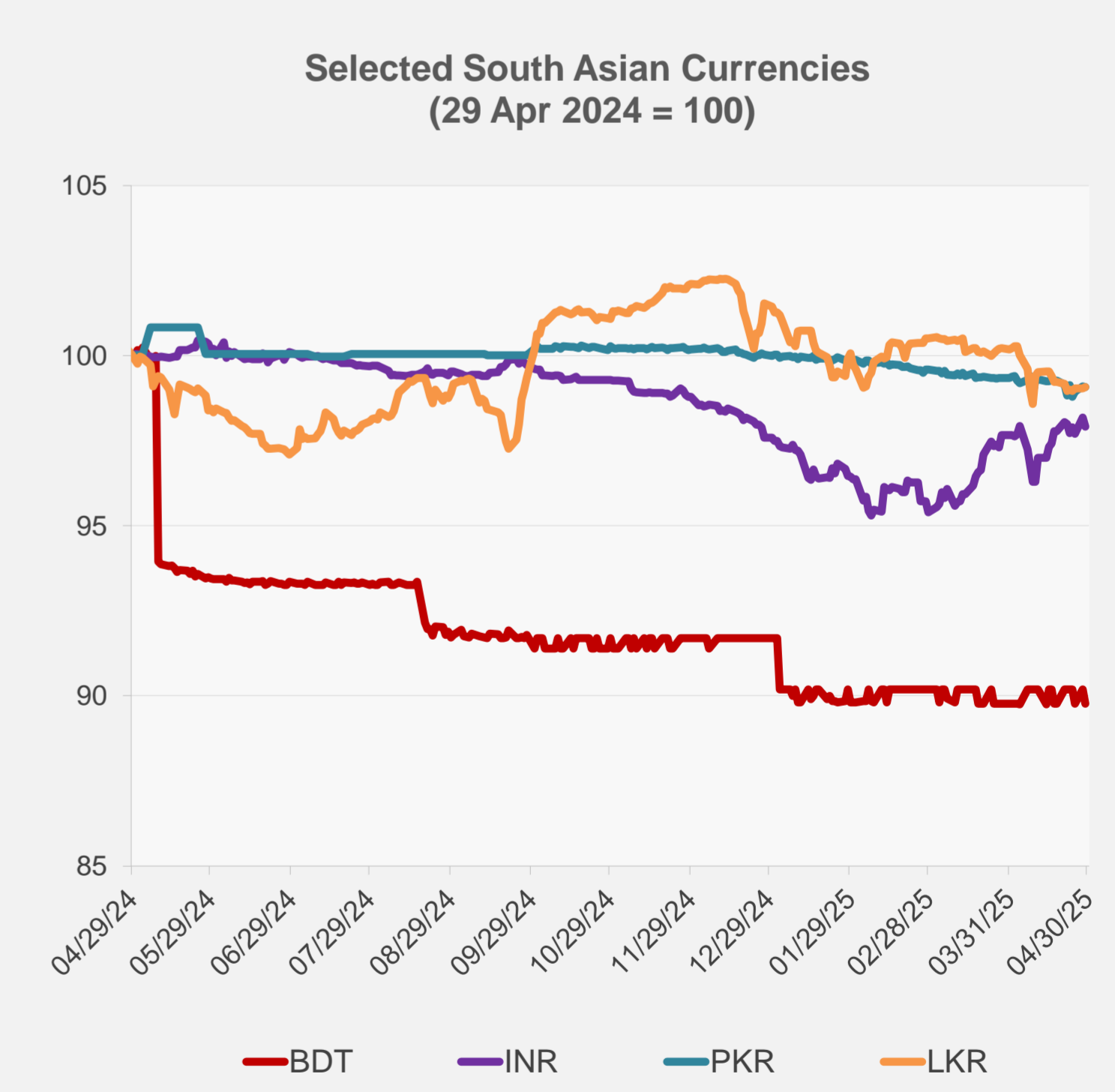
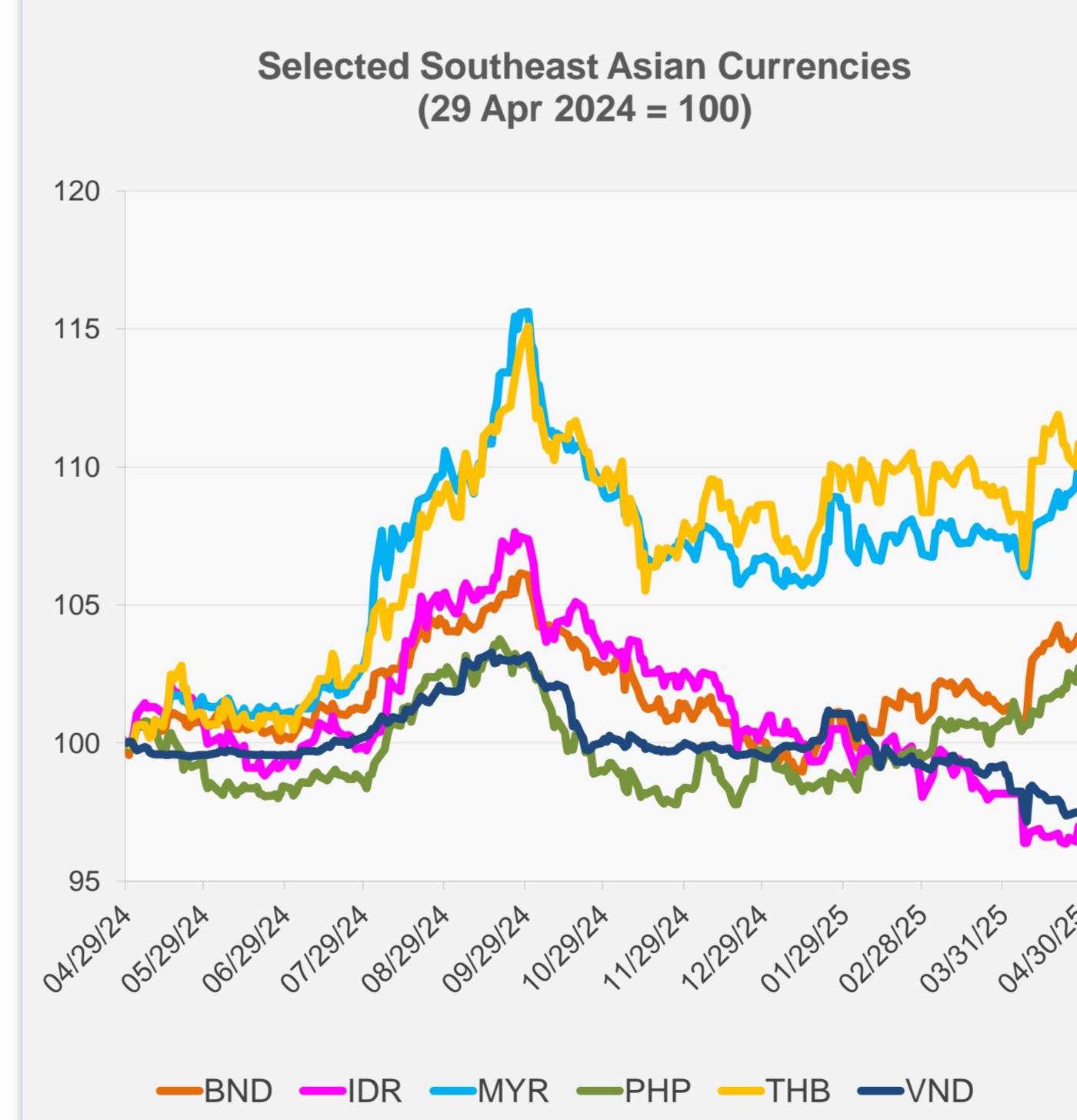


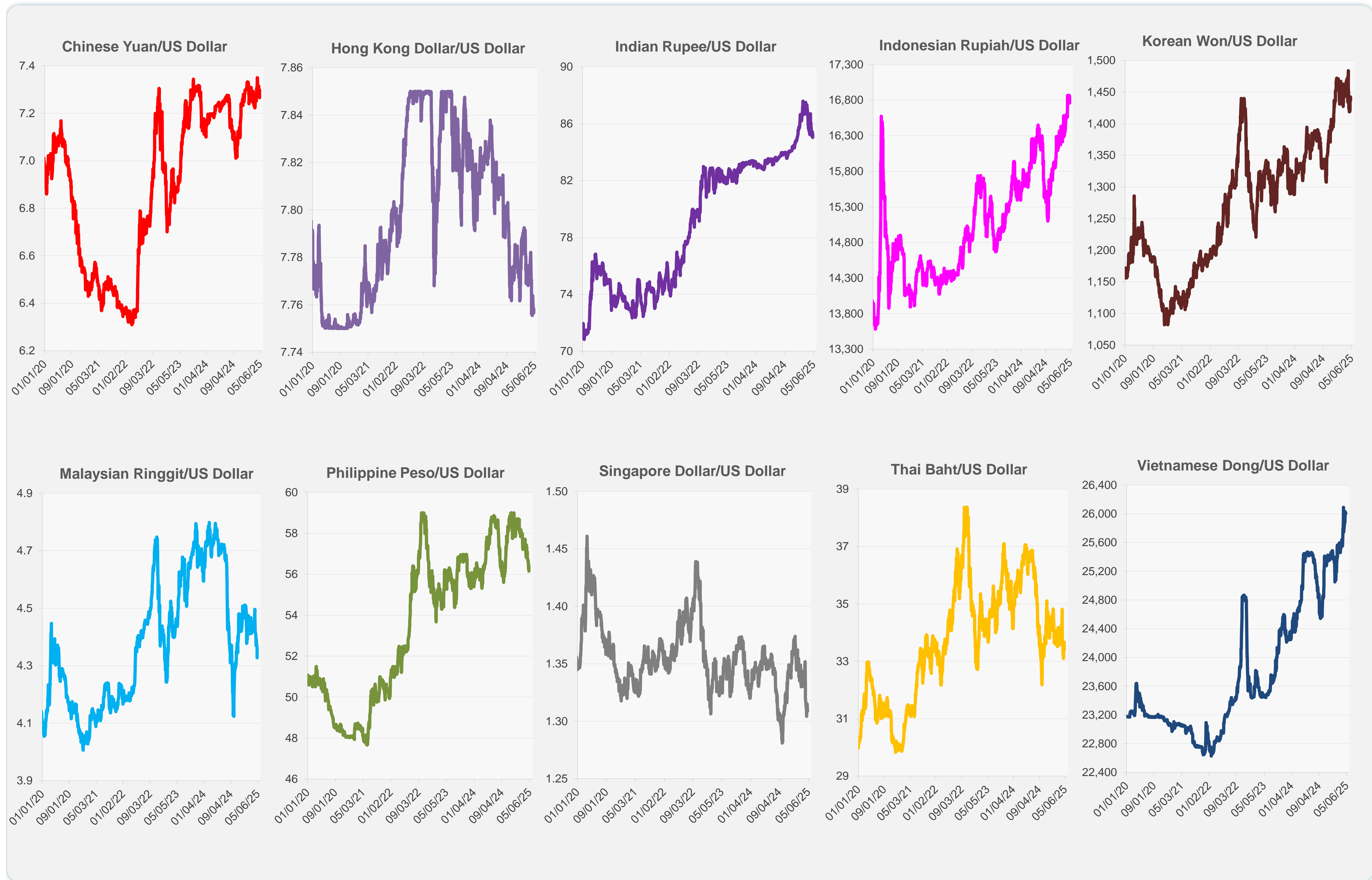
	Latest Closing	% change from Previous Day	% change from 01-Jan-25
Euro	0.88	0.03	9.93
Japanese yen (JPY)	142.37	0.34	10.39
Bangladeshi taka (BDT)	122.05	-0.45	-2.09
Brunei dollar (BND)	1.31	0.21	4.23
Chinese yuan (CNY)	7.27	0.47	0.47
Hong Kong dollar (HKD)	7.76	-0.02	0.13
Indian rupee (INR)	85.26	-0.26	0.42
Indonesian rupiah (IDR)	16,760.00	0.57	-3.97
Korean won (KRW)	1,437.30	0.34	2.42
Malaysian ringgit (MYR)	4.33	0.82	3.33
Pakistan rupee (PKR)	281.05	-0.02	-0.95
Philippine peso (PHP)	56.16	0.51	3.01
Singapore dollar (SGD)	1.31	0.21	4.23
Sri Lanka rupee (LKR)	299.50	0.03	-2.17
Taipei,China NT dollar (TWD)	32.26	0.74	1.64
Thai baht (THB)	33.41	0.76	2.05
Vietnamese dong (VND)	26,005.00	-0.02	-2.00



NIE = Newly Industrialized Economies



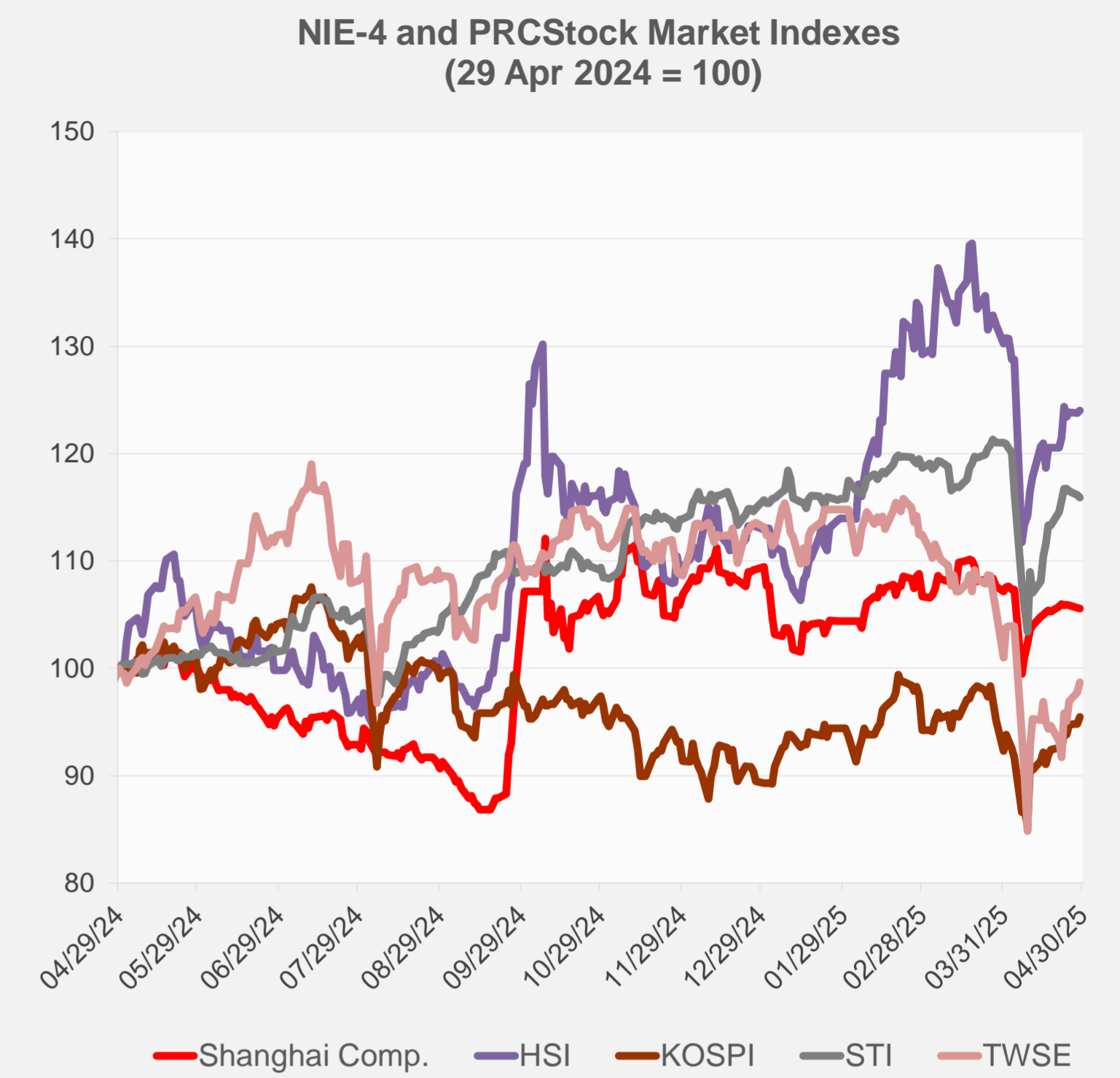
Note: Negative/Decreasing values indicate depreciation of local currency, and positive/increasing values indicate appreciation.  
Source: ADB calculations using data from Haver Analytics.



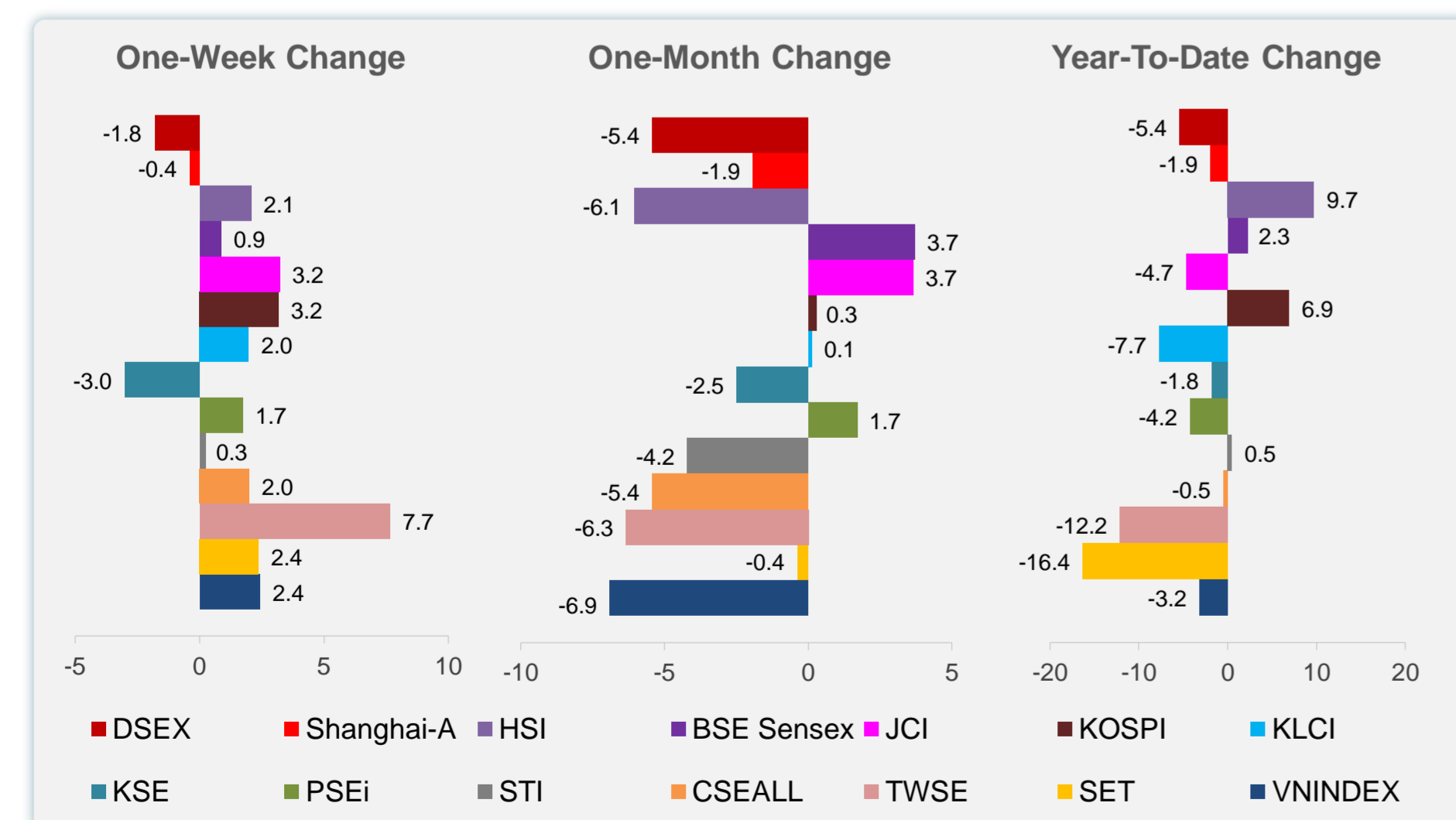
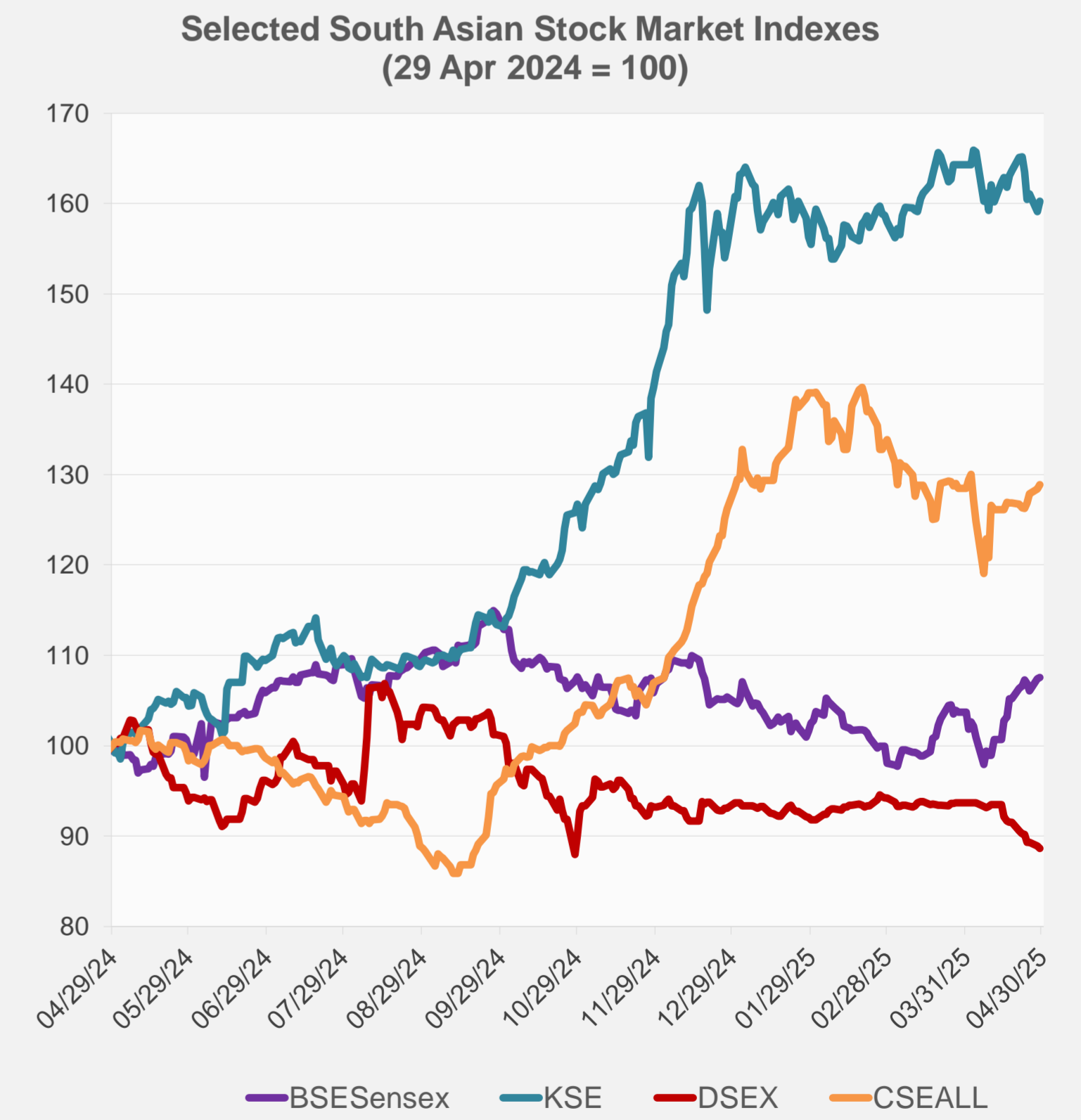
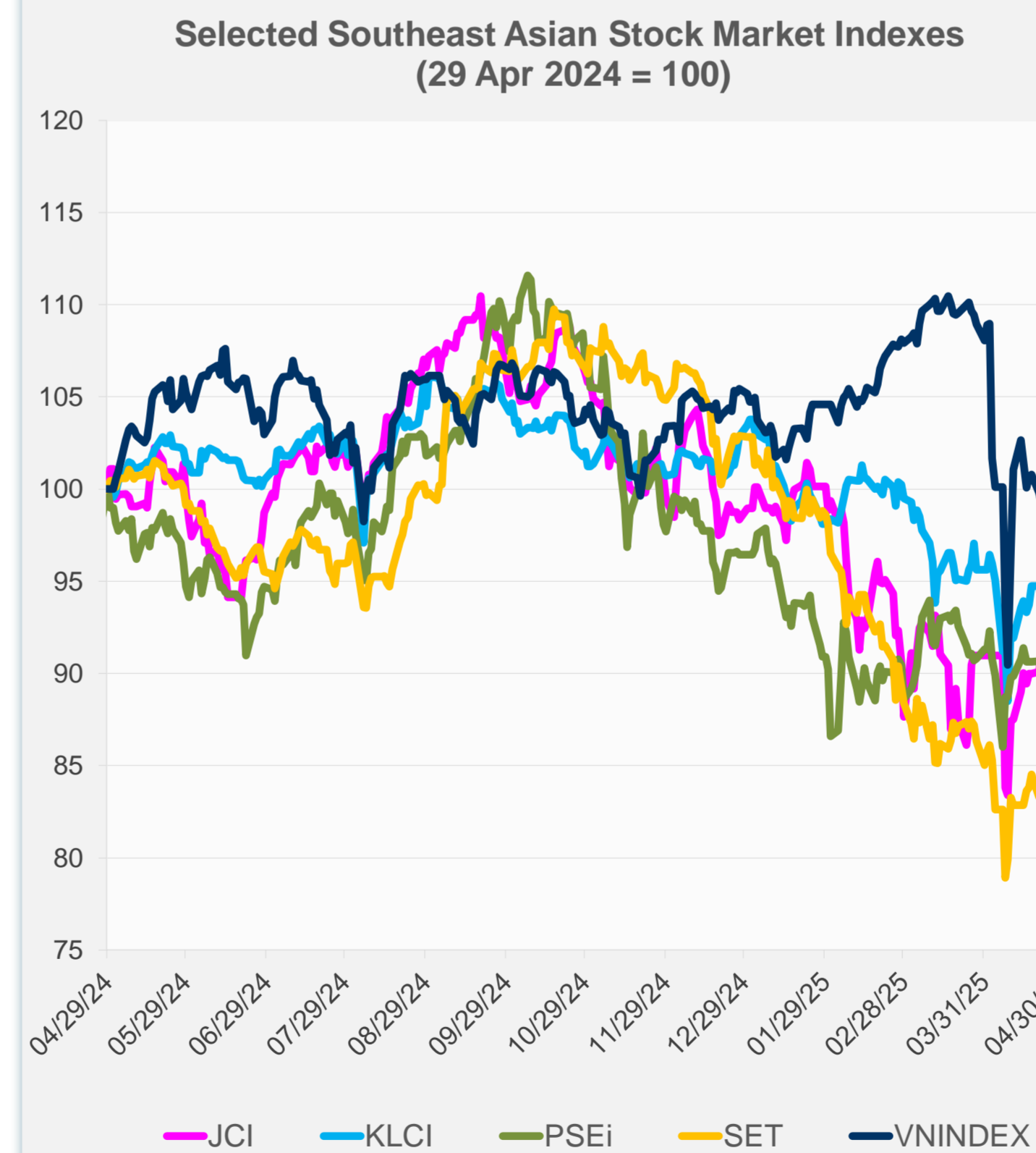
Source: Haver Analytics.

# Daily Market Watch STOCK INDEXES

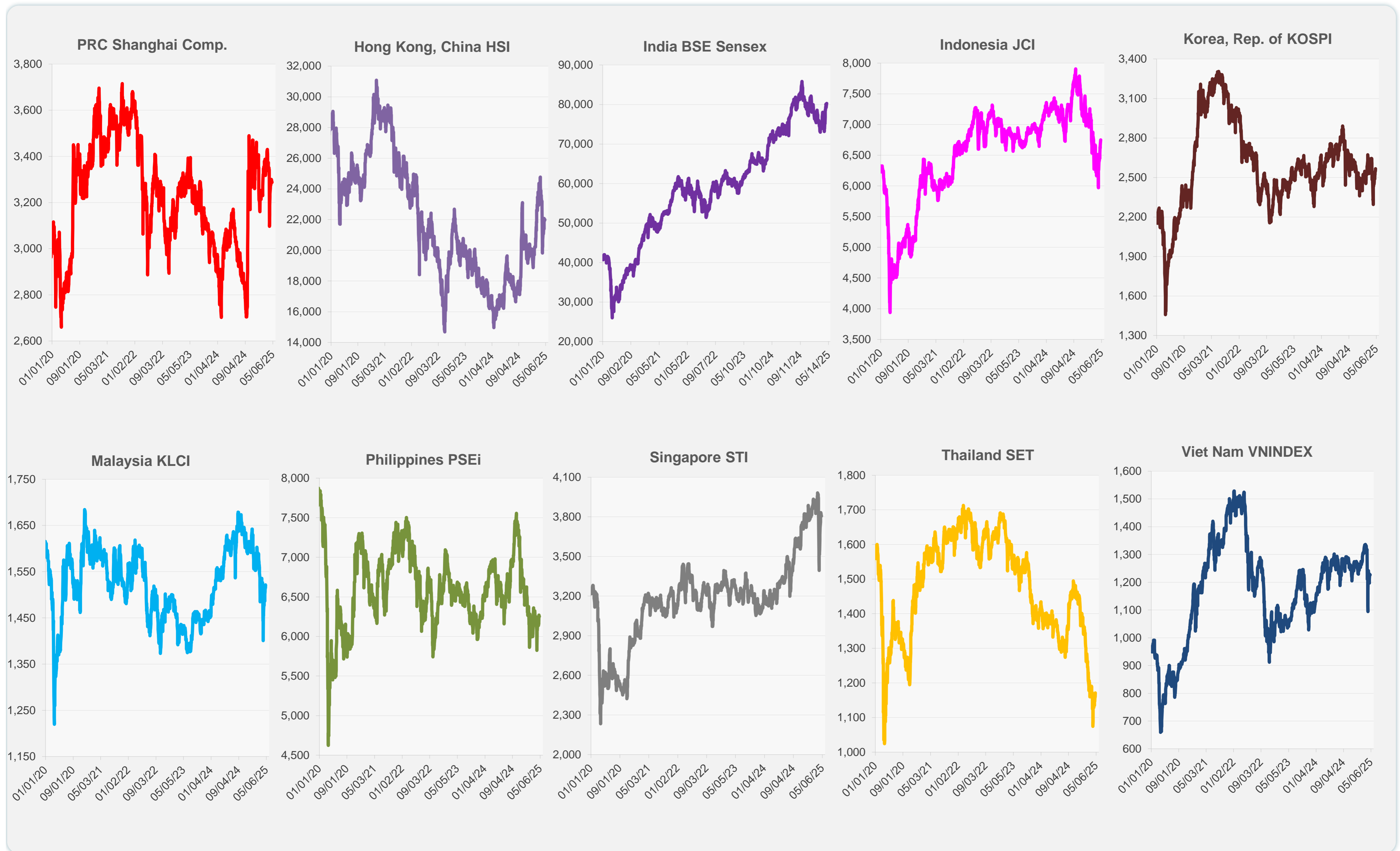
	Latest Closing	% change from Previous Day	% change from 01-Jan-25
US Dow Jones Ind Avg	40,527.62	0.75	-4.74
US NASDAQ	17,461.32	0.55	-9.58
US S&P 500	5,560.83	0.58	-5.45
UK FTSE 100	8,463.46	0.55	3.55
EURO STOXX 50	5,161.90	-0.17	5.43
Japan NIKKEI 225	35,839.99	0.00	-10.16
Bangladesh DSEX	4,935.62	-0.35	-5.41
PRC Shanghai Comp.	3,286.65	-0.05	-1.94
Hong Kong, China HSI	22,008.11	0.16	9.71
India BSE Sensex	80,288.38	0.09	2.27
Indonesia JCI	6,749.08	0.39	-4.67
Korea, Rep. of KOSPI	2,565.42	0.65	6.92
Malaysia KLCI	1,515.56	-0.40	-7.72
Pakistan KSE 100	114,872.18	0.71	-1.83
Philippines PSEi	6,252.19	0.04	-4.24
Singapore STI	3,805.18	-0.17	0.46
Sri Lanka CSEALL	15,867.34	0.35	-0.48
Taipei, China TWSE	20,232.63	0.99	-12.17
Thailand SET	1,171.12	1.00	-16.36
Viet Nam VNINDEX	1,226.30	-0.04	-3.20



NIE = Newly Industrialized Economies



Sources: ADB calculations using data from CEIC Data Company and Haver Analytics.

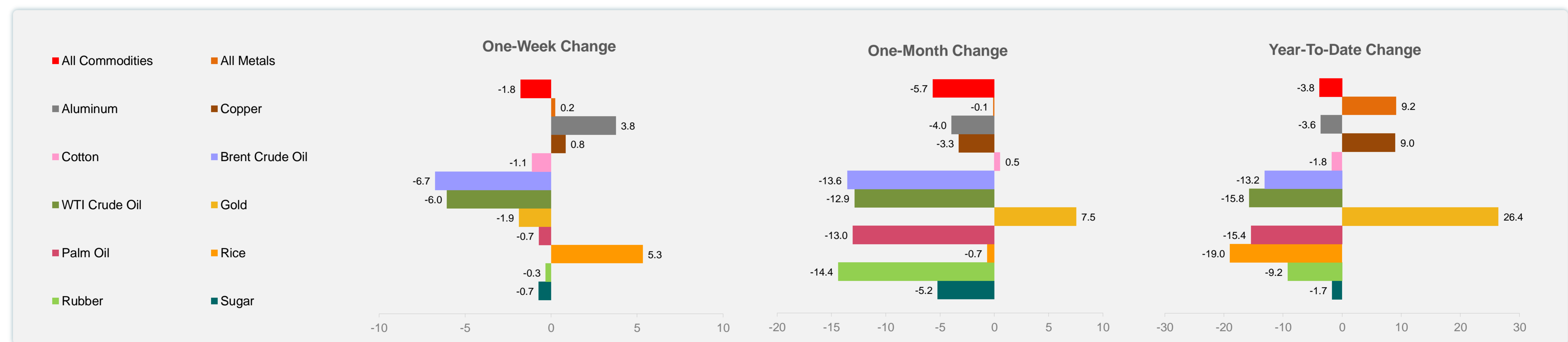
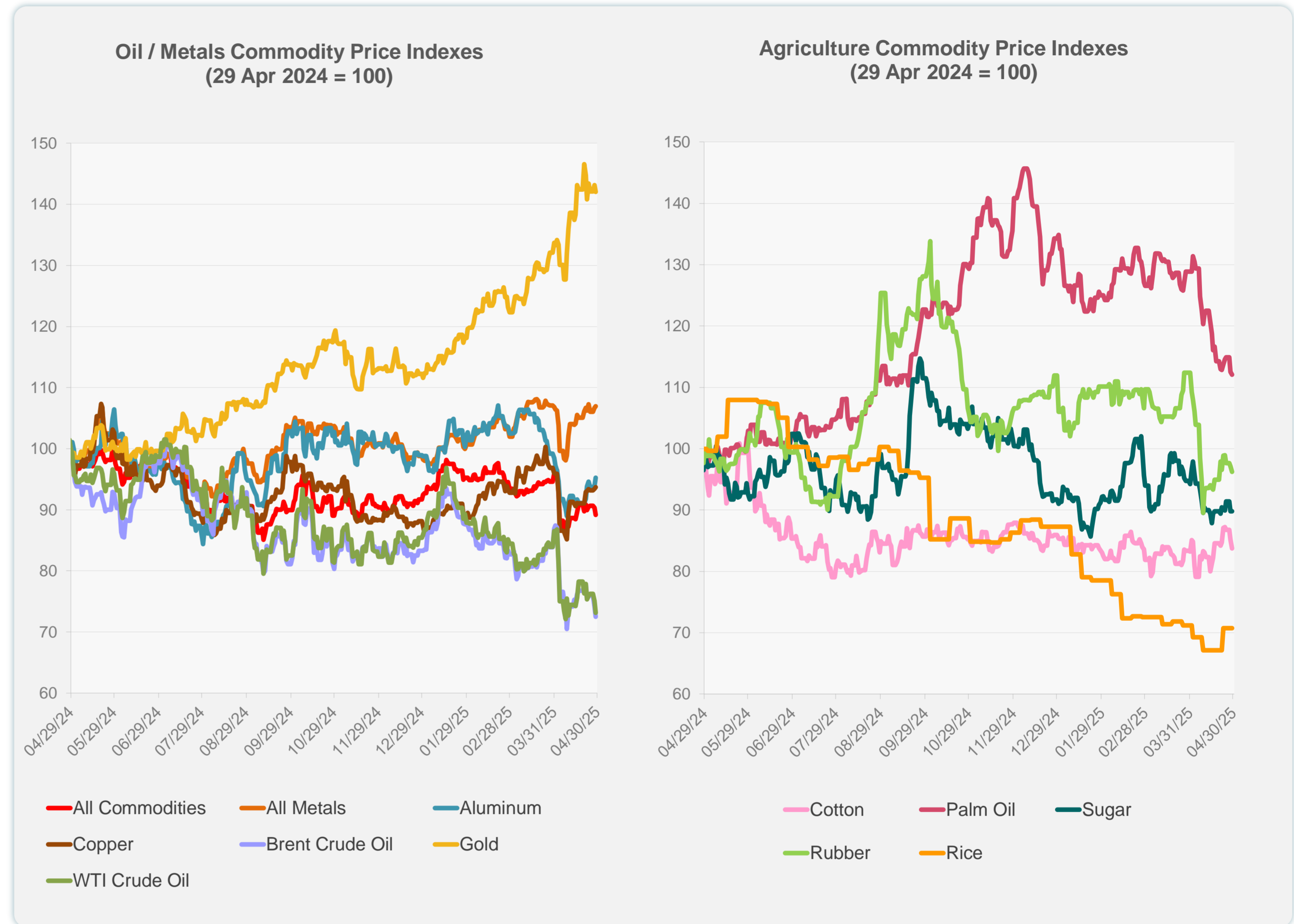


Sources: CEIC Data Company and Haver Analytics.

Daily Market Watch  
**COMMODITY PRICES**

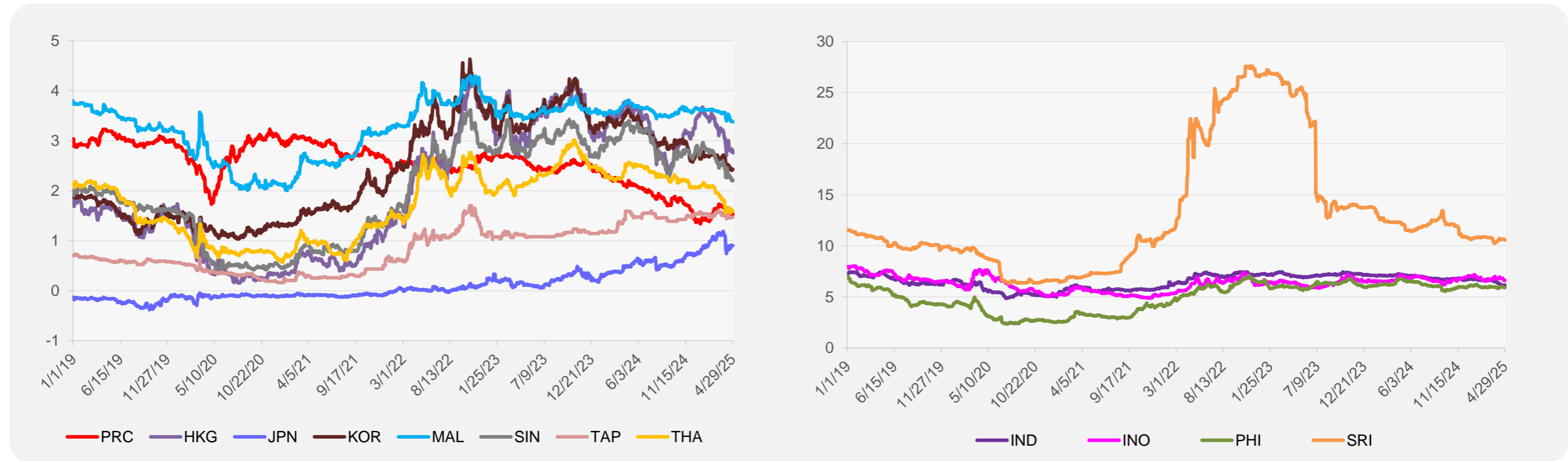
	Unit	Latest Closing	% change from Previous Day	% change from 01-Jan-25
S&P All Commodities	US\$	528.58	-1.26	-3.83
S&P All Metals	US\$	335.51	0.27	9.15
Aluminum	US\$/metric ton	2,435.30	1.46	-3.62
Copper	US\$/metric ton	9,430.24	0.25	8.99
Cotton	US cents/lb	64.74	-1.61	-1.76
Brent Crude Oil	US\$/barrel	64.35	-2.29	-13.17
WTI Crude Oil	US\$/barrel	60.42	-2.63	-15.76
Gold	US\$/troy oz	3,317.41	-0.79	26.40
Palm Oil	US\$/metric tonne	930.26	-0.38	-15.44
Rice <sup>1</sup>	US\$/metric ton	435.00	0.00	-18.99
Rubber <sup>2</sup>	US\$/kg	214.90	-0.92	-9.25
Sugar	US cents/lb	17.89	0.00	-1.70

<sup>1</sup> Latest closing price from 23 April 2025.  
<sup>2</sup> Singapore Exchange, Ribbed Smoked Sheet Rubber.

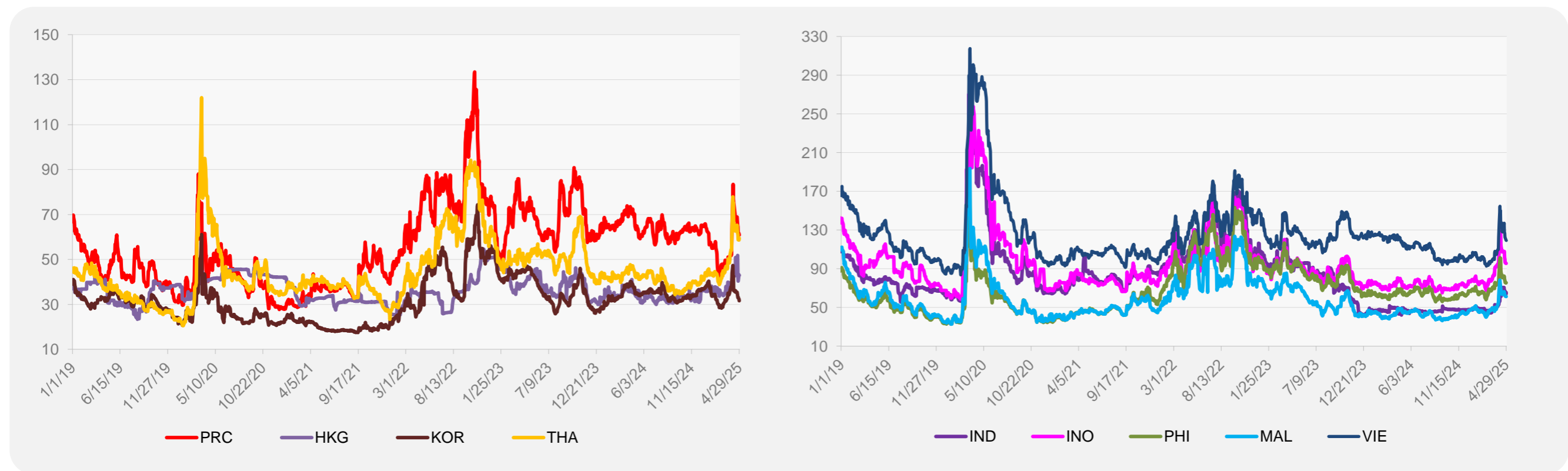


Source: ADB calculations using data from Bloomberg.

### 5-YEAR LOCAL CURRENCY GOVERNMENT BOND YIELDS (%)



### 5-YEAR CREDIT DEFAULT SWAP<sup>1</sup>



<sup>1</sup> In USD and based on sovereign bonds.  
Source: ADB calculations using data from Bloomberg.