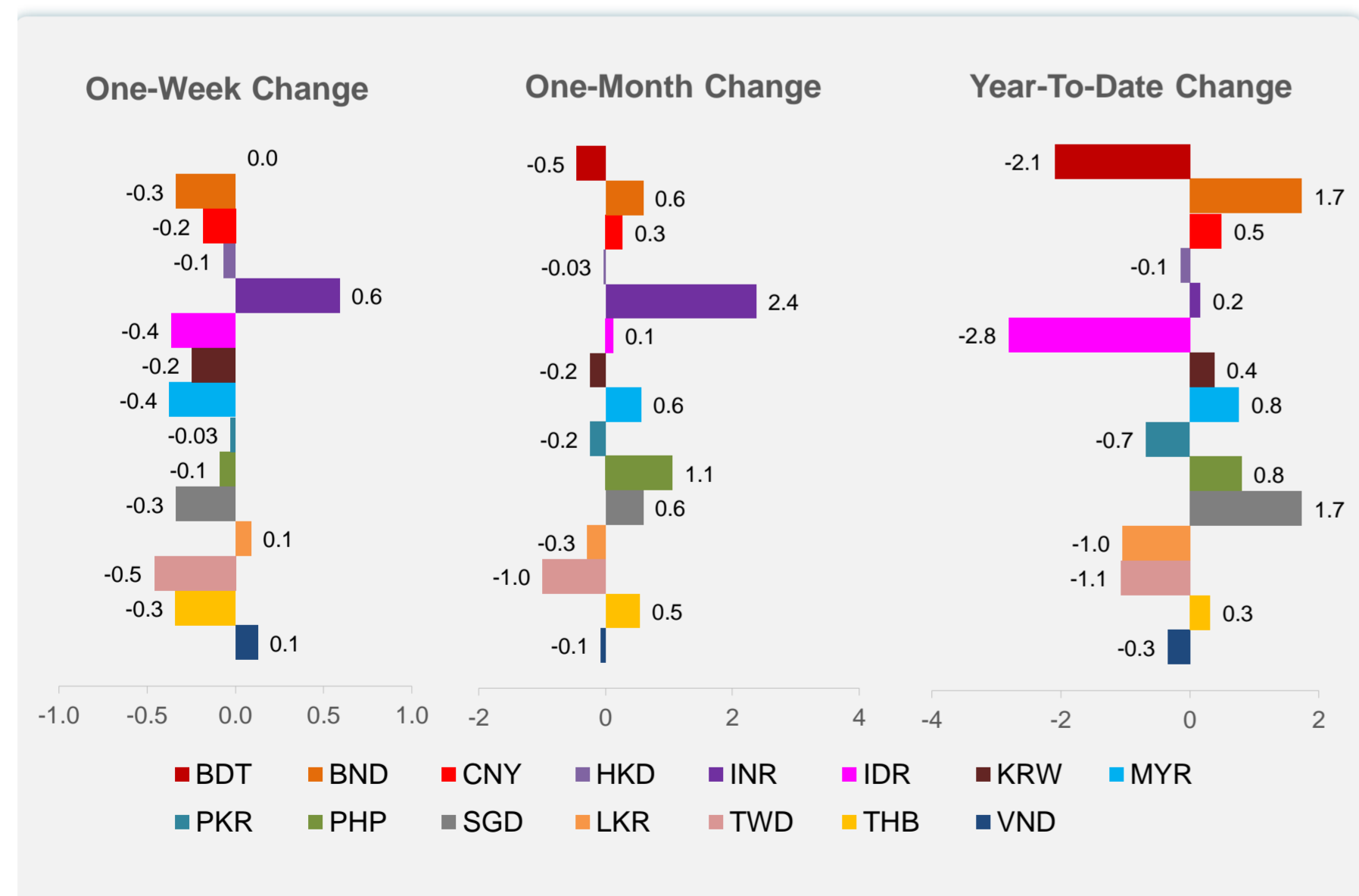
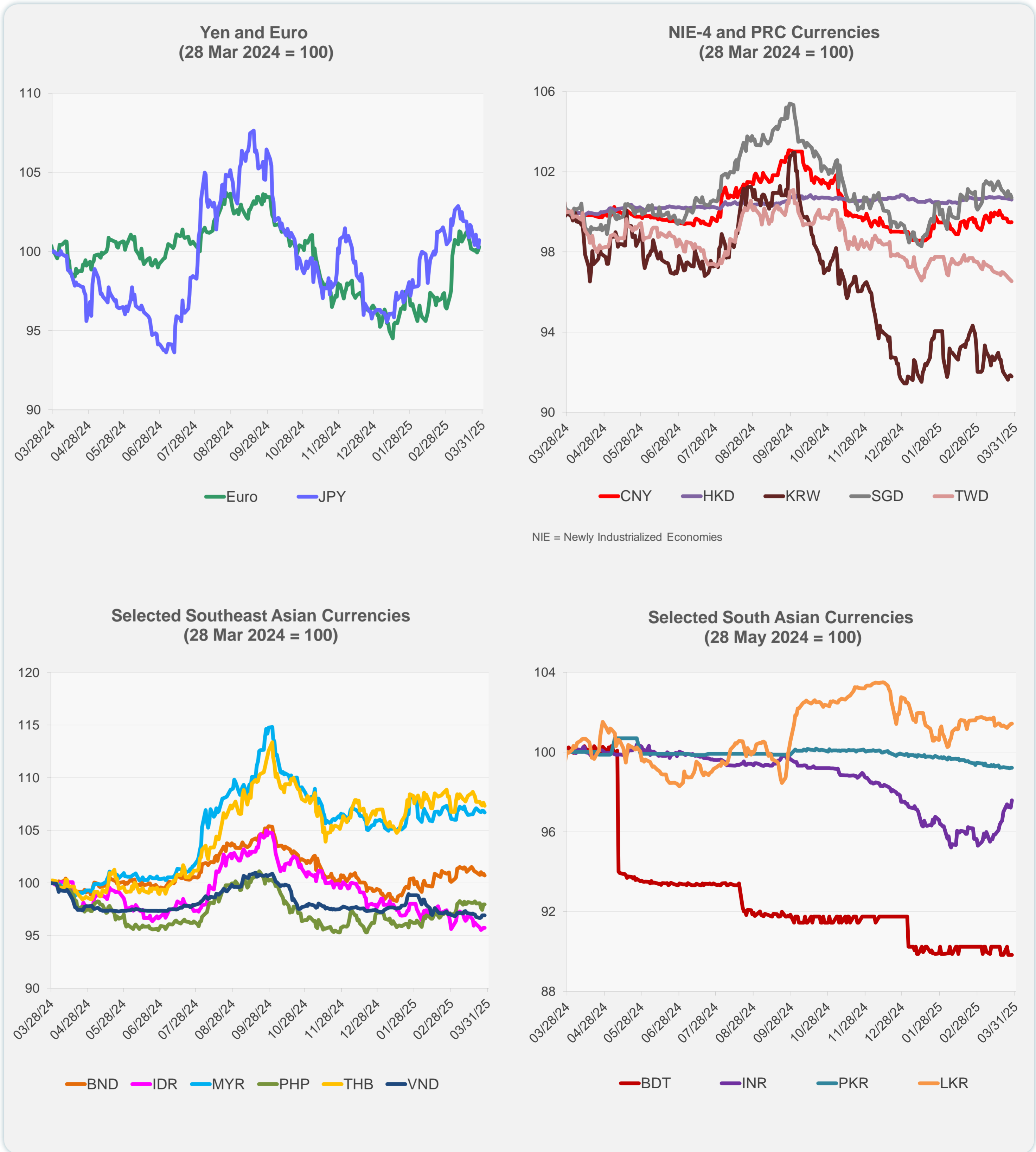
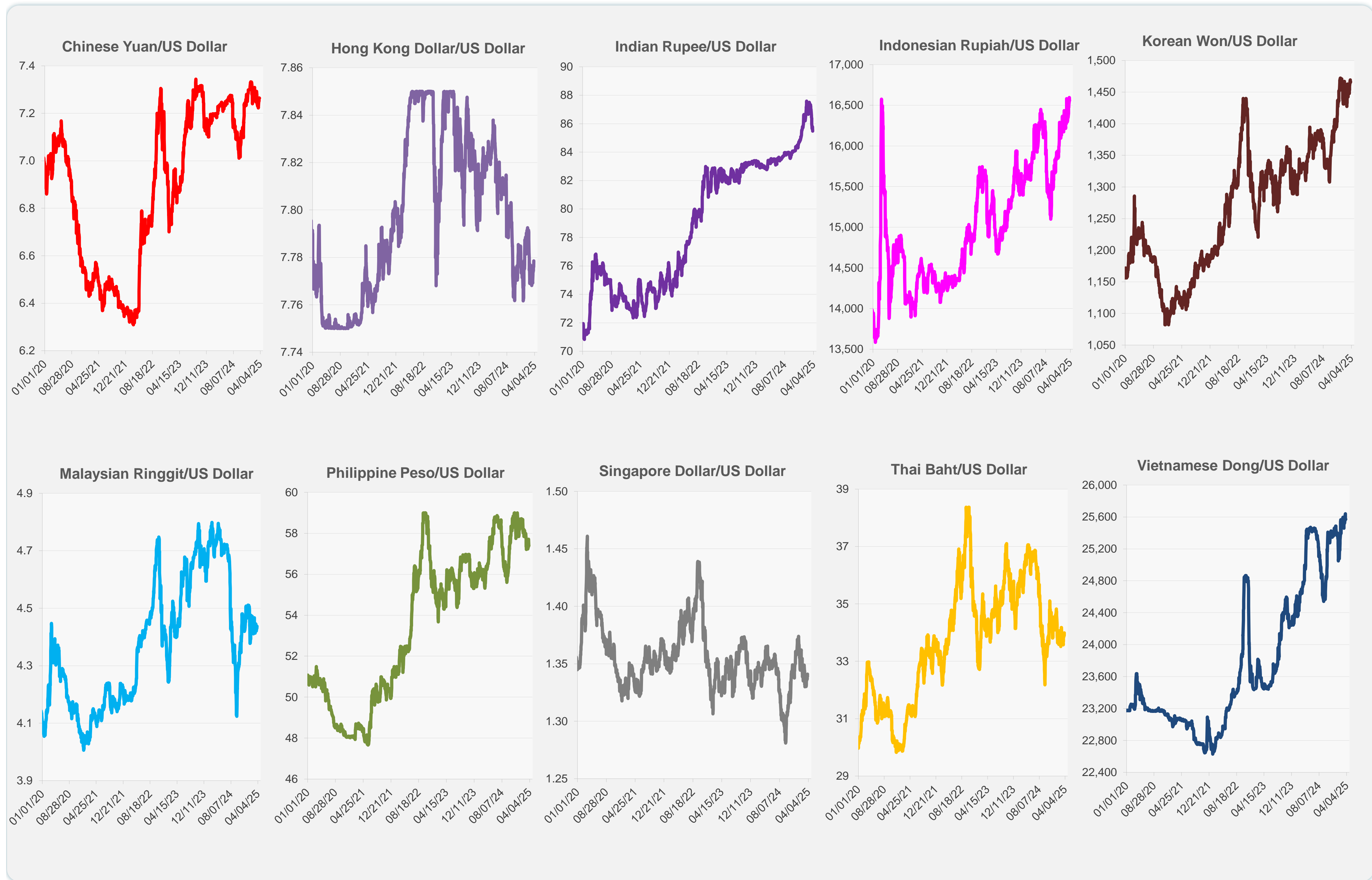


	Latest Closing	% change from Previous Day	% change from 01-Jan-25
Euro	0.92	0.23	4.51
Japanese yen (JPY)	150.28	0.48	4.58
Bangladeshi taka (BDT)	122.05	0.00	-2.09
Brunei dollar (BND)	1.34	-0.17	1.74
Chinese yuan (CNY)	7.26	0.02	0.49
Hong Kong dollar (HKD)	7.78	-0.03	-0.13
Indian rupee (INR)	85.47	0.37	0.17
Indonesian rupiah (IDR)	16,560.00	0.00	-2.81
Korean won (KRW)	1,466.55	-0.06	0.38
Malaysian ringgit (MYR)	4.44	-0.14	0.77
Pakistan rupee (PKR)	280.28	0.00	-0.68
Philippine peso (PHP)	57.39	0.01	0.80
Singapore dollar (SGD)	1.34	-0.17	1.74
Sri Lanka rupee (LKR)	296.09	0.01	-1.04
Taipei,China NT dollar (TWD)	33.14	-0.06	-1.07
Thai baht (THB)	33.99	-0.28	0.32
Vietnamese dong (VND)	25,572.50	-0.01	-0.34



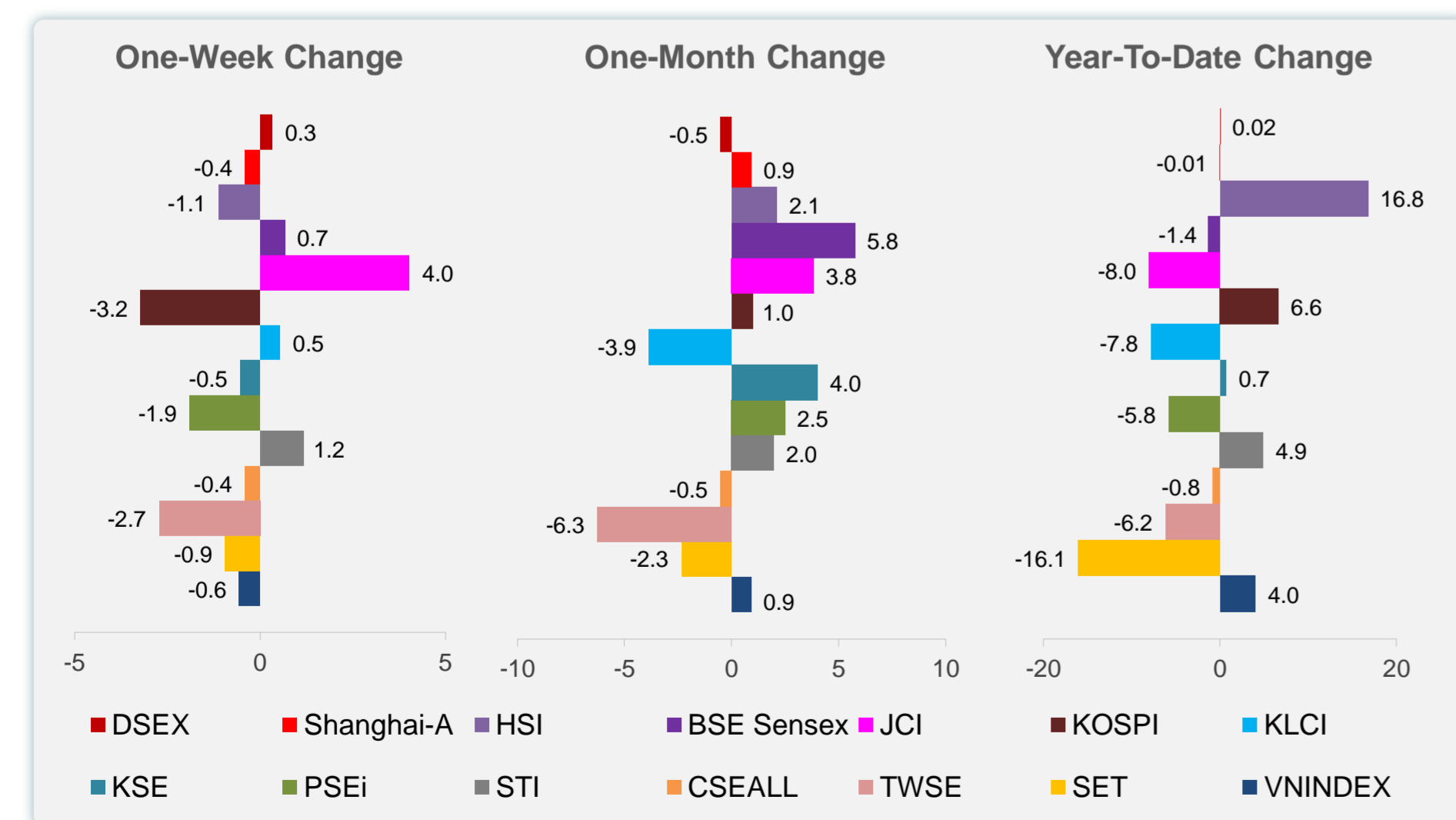
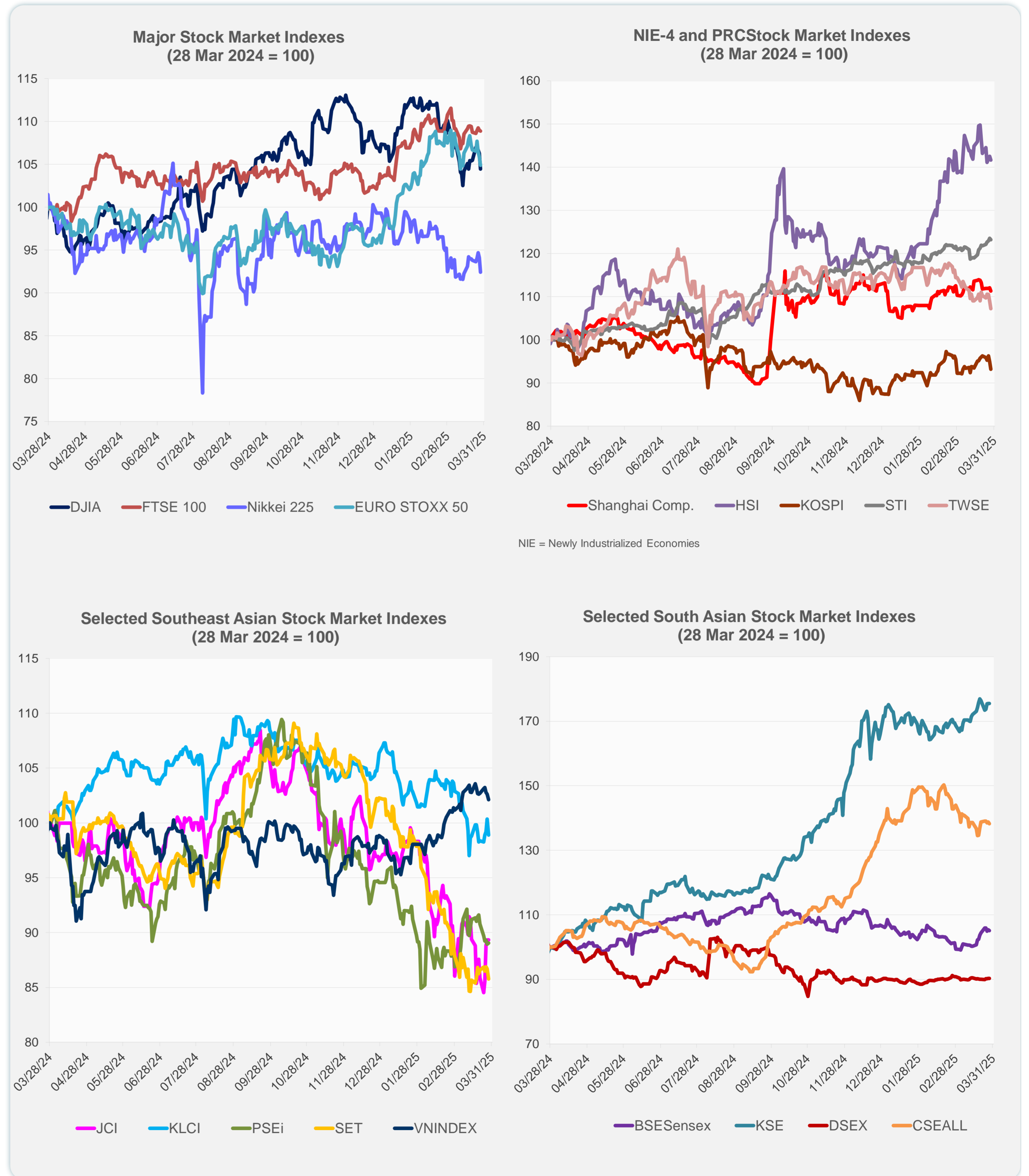
Note: Negative/Decreasing values indicate depreciation of local currency, and positive/increasing values indicate appreciation.
Source: ADB calculations using data from Haver Analytics.



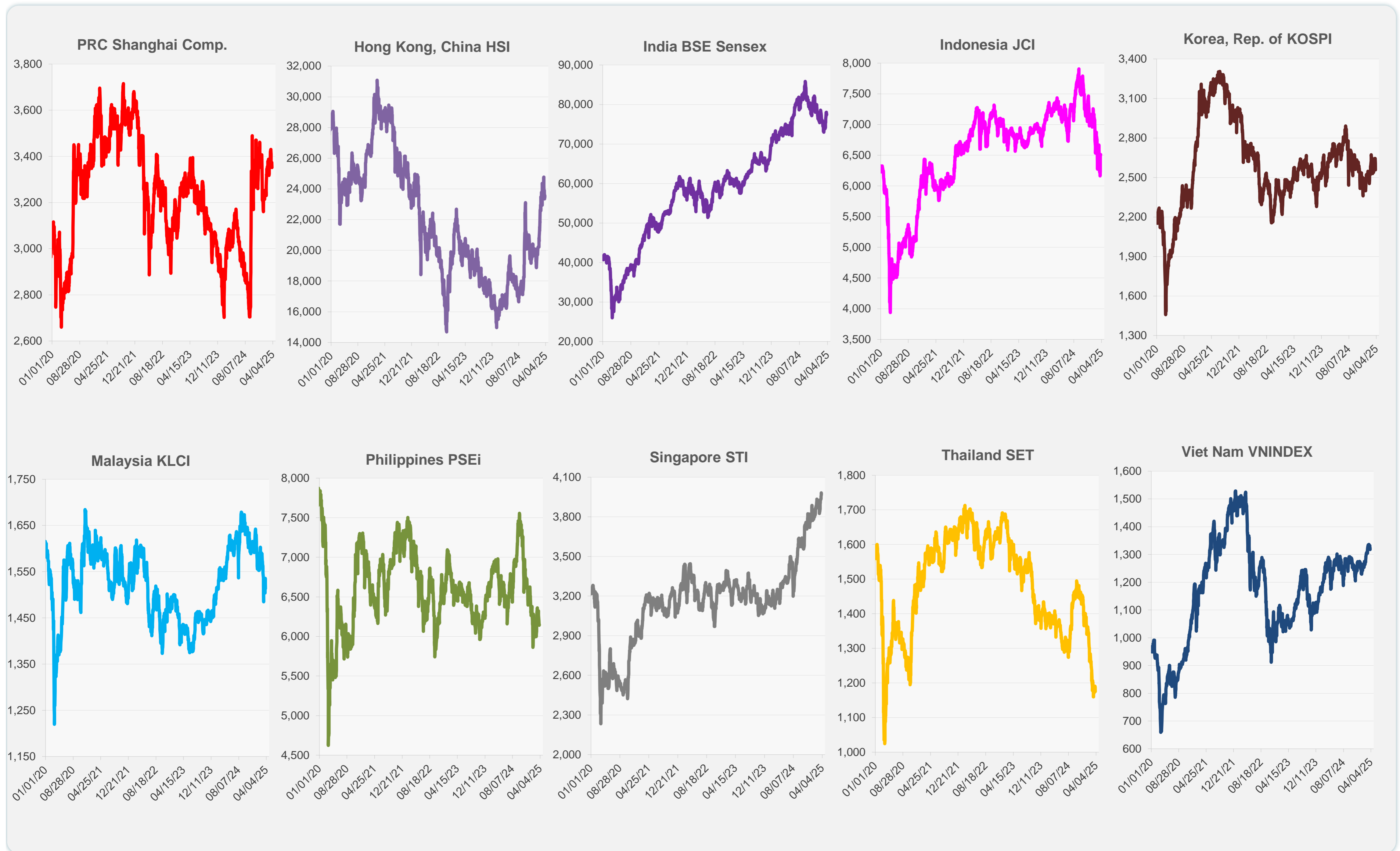
Source: Haver Analytics.

Daily Market Watch
STOCK INDEXES

	Latest Closing	% change from Previous Day	% change from 01-Jan-25
US Dow Jones Ind Avg	41,583.90	-1.69	-2.26
US NASDAQ	17,322.99	-2.70	-10.29
US S&P 500	5,580.94	-1.97	-5.11
UK FTSE 100	8,658.85	-0.08	5.94
EURO STOXX 50	5,331.40	-0.92	8.89
Japan NIKKEI 225	37,120.33	-1.80	-6.95
Bangladesh DSEX	5,219.16	0.00	0.02
PRC Shanghai Comp.	3,351.31	-0.67	-0.01
Hong Kong, China HSI	23,426.60	-0.65	16.78
India BSE Sensex	77,414.92	-0.25	-1.39
Indonesia JCI	6,510.62	0.00	-8.04
Korea, Rep. of KOSPI	2,557.98	-1.89	6.61
Malaysia KLCI	1,513.65	-1.44	-7.84
Pakistan KSE 100	117,806.74	0.00	0.68
Philippines PSEi	6,147.44	0.13	-5.84
Singapore STI	3,972.43	-0.23	4.88
Sri Lanka CSEALL	15,814.82	-0.42	-0.81
Taipei, China TWSE	21,602.89	-1.59	-6.22
Thailand SET	1,175.45	-1.05	-16.05
Viet Nam VNINDEX	1,317.46	-0.48	4.00



Sources: ADB calculations using data from CEIC Data Company and Haver Analytics.



Sources: CEIC Data Company and Haver Analytics.

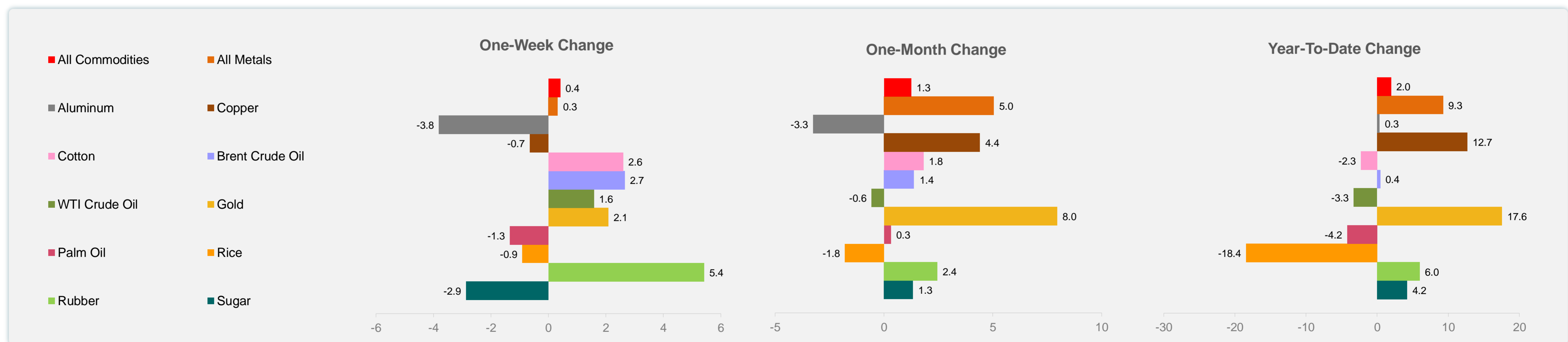
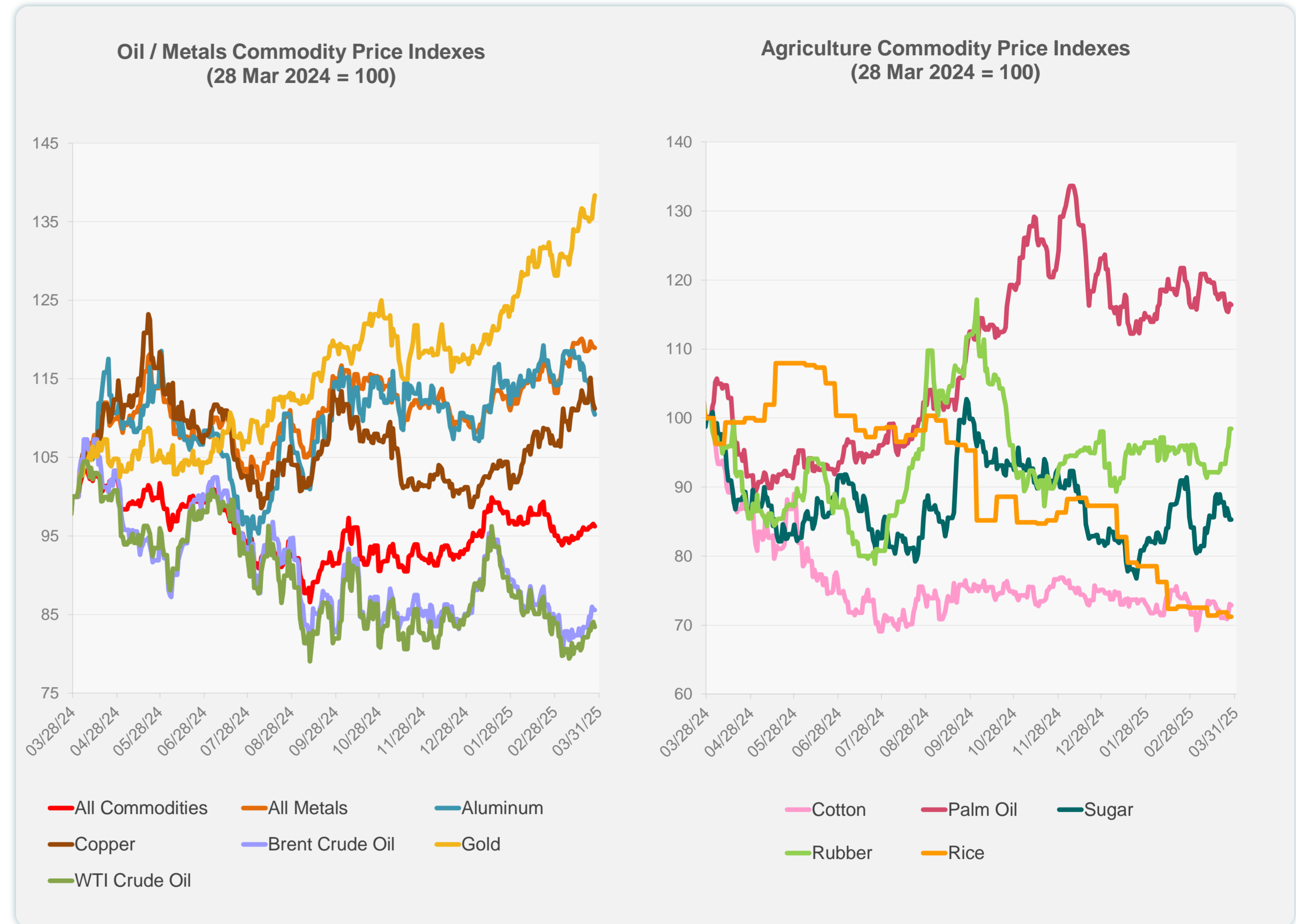
Daily Market Watch
COMMODITY PRICES

31 March 2025, 9:00 AM Manila

	Unit	Latest Closing	% change from Previous Day	% change from 01-Jan-25
S&P All Commodities	US\$	560.51	-0.31	1.98
S&P All Metals	US\$	335.91	-0.09	9.28
Aluminum	US\$/metric ton	2,535.61	-0.52	0.35
Copper	US\$/metric ton	9,749.69	-0.52	12.68
Cotton	US cents/lb	64.40	-0.26	-2.28
Brent Crude Oil	US\$/barrel	74.44	-0.08	0.45
WTI Crude Oil	US\$/barrel	69.36	-0.80	-3.29
Gold	US\$/troy oz	3,085.12	0.91	17.55
Palm Oil	US\$/metric tonne	1,053.78	-0.15	-4.21
Rice ¹	US\$/metric ton	438.00	0.00	-18.44
Rubber ²	US\$/kg	251.00	0.00	6.00
Sugar	US cents/lb	18.97	0.00	4.23

¹ Latest closing price from 26 March 2025.

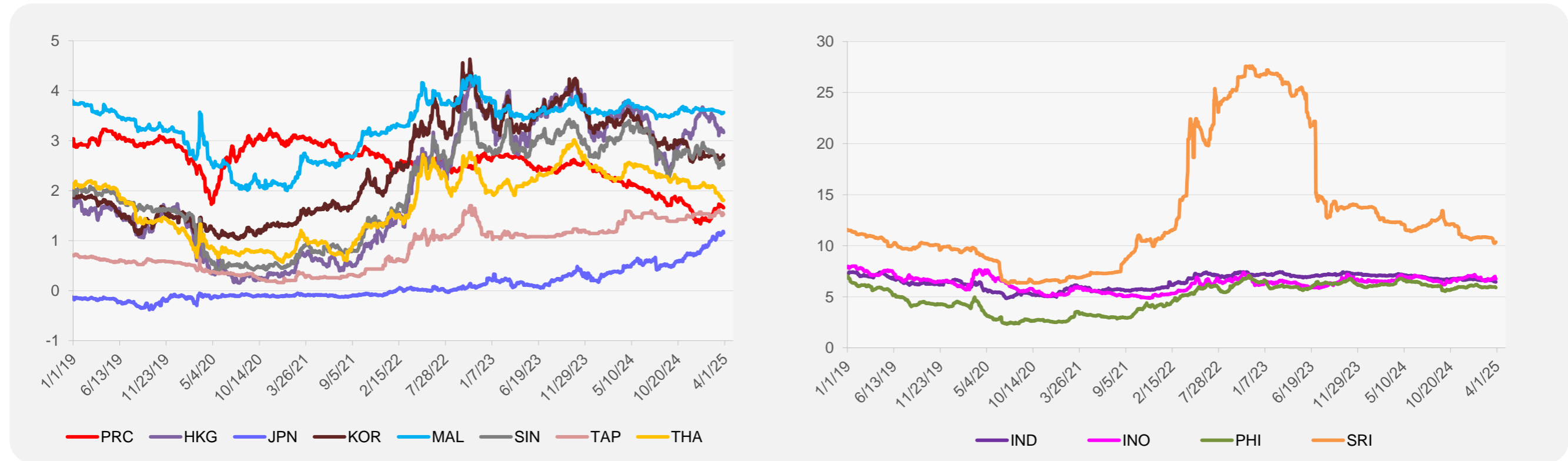
² Singapore Exchange, Ribbed Smoked Sheet Rubber.



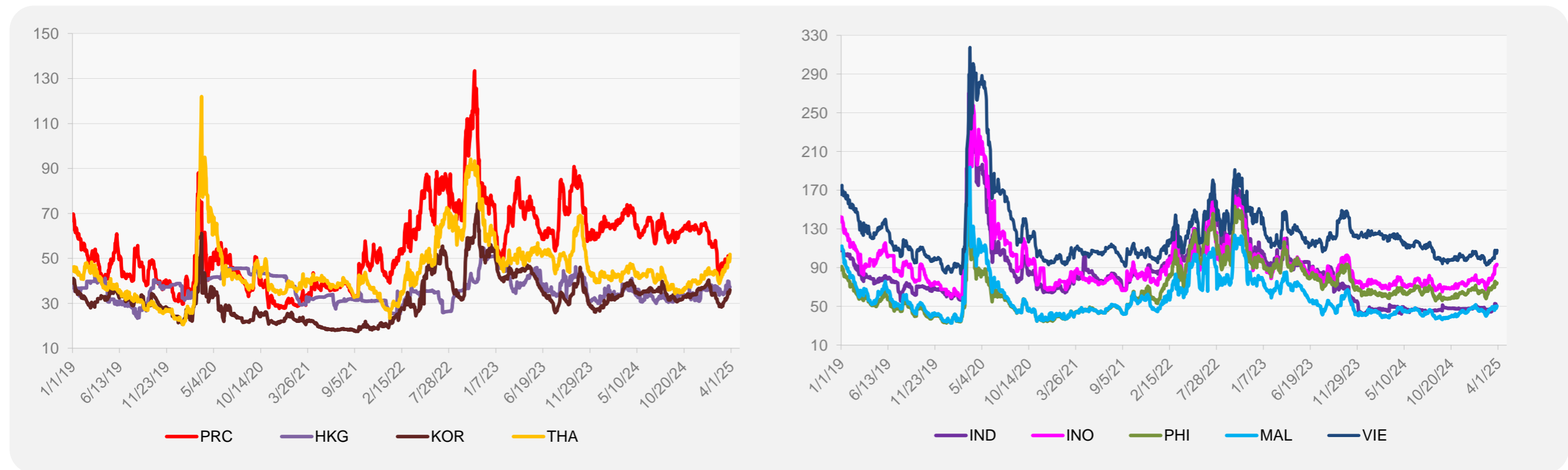
Source: ADB calculations using data from Bloomberg.

ASIA REGIONAL INTEGRATION CENTER
Regional Cooperation and Integration Division (ERIC)
Economic Research and Development Impact Department (ERDI)

5-YEAR LOCAL CURRENCY GOVERNMENT BOND YIELDS (%)



5-YEAR CREDIT DEFAULT SWAP¹



¹ In USD and based on sovereign bonds.
Source: ADB calculations using data from Bloomberg.