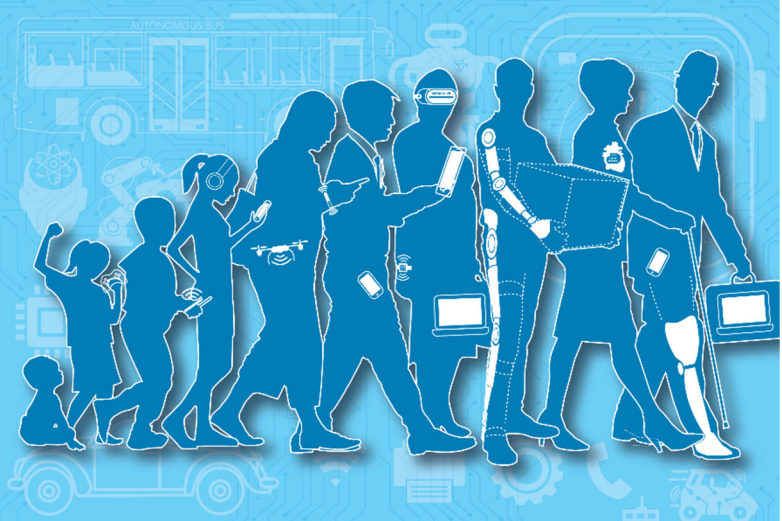


ASIAN ECONOMIC INTEGRATION REPORT 2019/2020

DEMOGRAPHIC CHANGE, PRODUCTIVITY, AND THE ROLE OF TECHNOLOGY



13 November 2019, 12:15–1:30 p.m.
 Research Institute of Economy, Trade and Industry (RIETI)
 11th floor, Annex, Ministry of Economy, Trade and Industry (METI)
 1-3-1, Kasumigaseki Chiyoda-ku, Tokyo, 100-8901

AGENDA

12:00 n.n–12:15 p.m.

Registration

Moderator:

Hideaki Fujisawa, Director, Asia and Pacific Division, Trade Policy Bureau
 Ministry of Economy, Trade and Industry

12:15–12:20 p.m.

INTRODUCTION

12:20–12:50 p.m.

PRESENTATION ON THE KEY FINDINGS OF *ASIAN ECONOMIC INTEGRATION REPORT 2019/2020*

- Yasuyuki Sawada, Chief Economist and Director General, ADB
- Aiko Kikkawa Takenaka, Economist, ADB

12:50–1:20 p.m.

PANEL DISCUSSION: DEMOGRAPHIC CHANGE, PRODUCTIVITY, AND THE ROLE OF TECHNOLOGY

Panelists:

- Izumi Ohno, Director, JICA Research Institute
- Daiji Kawaguchi, Professor, University of Tokyo,
- Yasuyuki Sawada, Chief Economist and Director General, ADB
- Aiko Kikkawa Takenaka, Economist, ADB

1:20–1:30 p.m.

OPEN FLOOR DISCUSSION

1:30 p.m.

CLOSING

ABOUT THE ASIAN ECONOMIC INTEGRATION REPORT

The *Asian Economic Integration Report* is an annual publication that documents Asia's progress in regional cooperation and integration. The 2019/2020 report features a theme chapter on "Demographic Change, Productivity, and the Role of Technology". The theme chapter explores the role and potential of technology in boosting the productivity of an aging economy. It also discusses how countries in the region can best promote and adopt innovations that can turn demographic challenges into opportunities and dividends.